

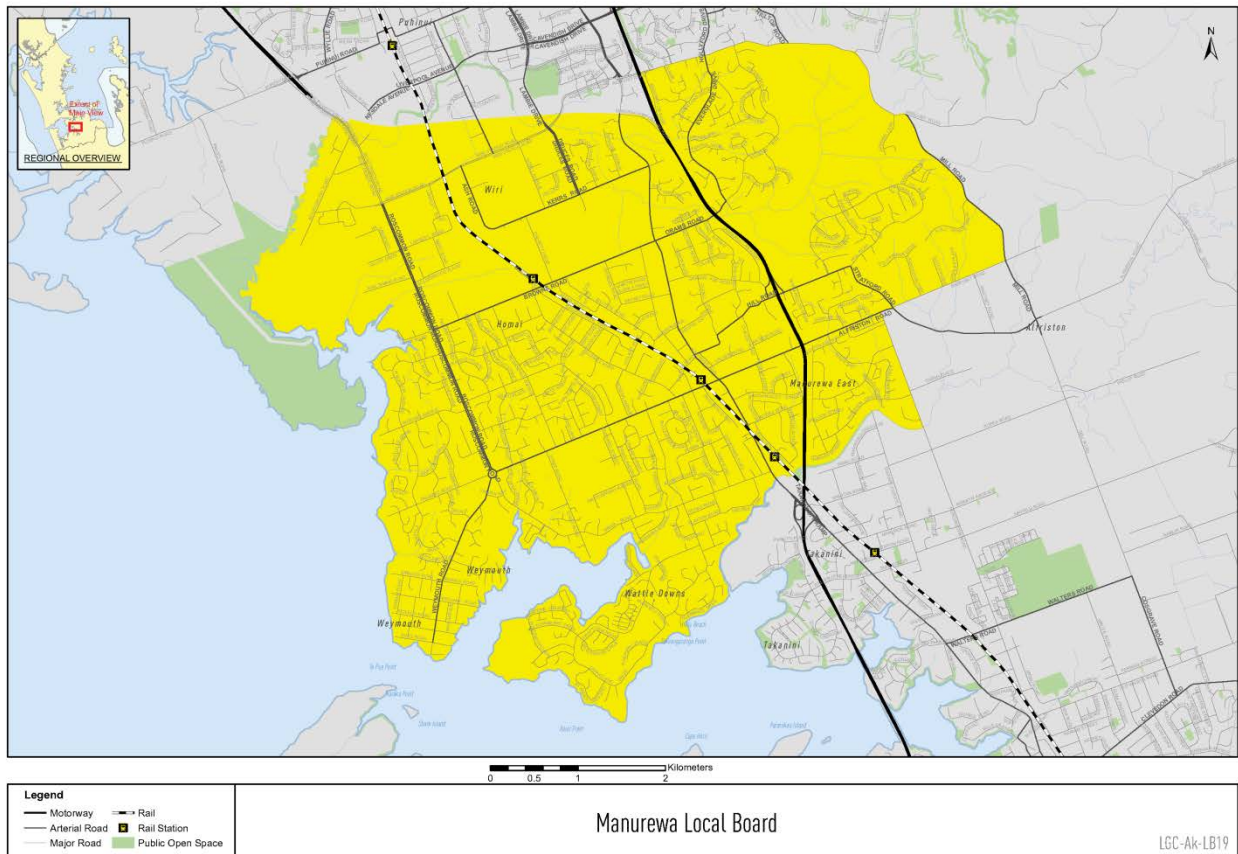
Manurewa Local Board Profile

- Initial results from the 2013 Census

February 2014

Social and Economic Research Team
Research, Investigations and Monitoring Unit
Auckland Council

Map of Manurewa Local board



This report is part of a broader series of 2013 Census reports being developed by the Research, Investigations and Monitoring Unit at Auckland Council. These will be released throughout 2014.

For more information on Auckland-related census data please contact us on census@aucklandcouncil.govt.nz.

For more information on the 2013 census, please visit the Statistics New Zealand census website:
www.stats.govt.nz/Census/2013-census.aspx

To access Auckland-specific data visit our interactive website: www.censusauckland.co.nz.

At a glance

At the 2013 New Zealand Census of Population and Dwellings:

- The usually resident population count for the Manurewa local board area was 82,242. Manurewa's population increased by 5,052 (6.5%) between the 2006 and 2013 Censuses.
- A quarter (25.3%) of Manurewa's usually resident population identified as Māori, compared to 10.7 per cent in Auckland as a whole. A third (33.0%) identified with a Pacific ethnic group, compared to 14.6 per cent in Auckland as a whole, and almost one in five (20.3%) identified with an Asian ethnic group, up from 14.8 per cent in 2006.
- Te reo Māori and Samoan were spoken by a greater proportion of people in Manurewa than in Auckland as a whole.
- The median age in Manurewa was 29.8 years, one of the youngest median ages of all local board areas. More than a quarter (27.0%) of Manurewa's usual residents were children (aged 0 to 14 years compared with 20.9%).
- The number of usual residents in Manurewa aged 65 years and over was 6,933, up from 5,391 in 2006 (28.6% growth).
- There were 30,453 employed adults (people aged 15 years and over) in Manurewa. The proportion of adult residents who were employed in Manurewa was 54.8 per cent, compared with 61.5 per cent in Auckland as a whole.
- The median personal income for adults in Manurewa was \$24,700 per annum – lower than that for Auckland as a whole at \$29,600.
- The proportion of Manurewa adults with a formal qualification was 71.8 per cent, up from 66.1 per cent in 2006.
- A total of 22,662 households and 22,713 occupied private dwellings were recorded in Manurewa.
- One-family households were the most common type of household in Manurewa, making up 71.5 per cent of households. Two-family households were more common in Manurewa at 10.3 per cent than in Auckland as a whole at 5.4 per cent.
- The median household income was \$67,800 per annum, compared to \$76,500 for Auckland as a whole.
- 87.3 per cent of the occupied dwellings in Manurewa were separate houses. Attached dwellings were less prevalent in Manurewa at 12.5 per cent, than in Auckland as a whole at 24.8 per cent.
- Home ownership was low in Manurewa at 54.7 per cent compared to 61.5 per cent for Auckland. In line with long-term trends, the home ownership rate in Manurewa declined from 59.4 per cent in 2006.

Table of Contents

1.0	Introduction	1
1.1	Manurewa local board area.....	1
1.2	Important notes on the data	1
2.0	Population and growth.....	2
2.1	Auckland's growth slows but remains high.....	2
2.2	Manurewa's population continues to grow	2
3.0	Cultural diversity.....	3
3.1	Manurewa's population is ethnically diverse	3
3.2	Broad changes since 2006	4
3.3	Decline in European ethnic groups	5
3.4	Growth in the Asian population	5
3.5	Growth in Pacific ethnic groups.....	6
3.6	Te reo Māori and Samoan more prevalent in Manurewa.....	7
4.0	Age.....	8
4.1	High proportions of children in Manurewa	8
4.2	Older population growing.....	8
5.0	Work and income	10
5.1	Lower proportions of Manurewa residents employed	10
5.2	Rise in employment for people aged 65 years and over.....	11
5.3	Rise in unemployment for young people	11
5.4	Median incomes relatively low	11
6.0	Formal education qualifications	12
6.1	Qualifications in Manurewa relatively low.....	12
6.2	Increase in levels of qualifications.....	12
7.0	Households and dwellings.....	13
7.1	Multi-family households more prevalent in Manurewa.....	13
7.2	Increase in two-family households	14
7.3	Most dwellings are separate houses.....	14
7.4	Unoccupied dwellings less prevalent in Manurewa	14
8.0	Home ownership	15
8.1	Home ownership low and declining.....	15
	Summary Data.....	16

1.0 Introduction

This report provides a summary profile for the Manurewa local board area, following the initial release of data from the 2013 New Zealand Census of Population and Dwellings. It presents an overview of key findings as at the 2013 Census, and outlines changes over time since the 2006 Census. A table of key census data is included at the back of this report, for quick reference.

1.1 Manurewa local board area

The Manurewa local board area (hereafter referred to as Manurewa) includes the Wiri industrial estate, the suburbs of Manurewa East and Homai, and the coastal suburbs of Weymouth and Wattle Downs.

Manurewa is a prominent industrial and suburban area. Its main shopping centre along Great South Road includes Southmall and a variety of individually owned stores and banks.

Manurewa is home to Auckland's Regional Botanic Gardens (hosting approximately 1 million people each year), a large swimming pool complex (Manurewa Aquatic Centre – Ngaa Mahi a Rehia), a significant new multi-purpose sports facility on Mountfort Park and a recently upgraded netball facility.

Many residents have lived in Manurewa for several years and feel a strong loyalty to their community.

1.2 Important notes on the data

Information in this report is based on the census usually resident population count from New Zealand's 2013 Census of Population and Dwellings, held on 5 March 2013. This excludes New Zealand residents who were temporarily overseas on census night.

The data in this report has been randomly rounded to protect confidentiality. Individual figures may not add up to totals, and values for the same data may vary in different tables.

Unless otherwise stated, all percentages in this report exclude responses that cannot be classified (e.g., 'not stated', 'response unidentifiable', 'response out of scope'). This is in line with Statistics New Zealand conventions.

It should be remembered when considering the findings in this report that as the 2011 Census was cancelled, the gap between this census and the last one was seven years, rather than five years. Caution should be exercised when comparing inter-censal change.

2.0 Population and growth

Auckland has a long history of population growth, fuelled by natural increase (births minus deaths), as well as net migration from overseas and other parts of the country. Findings from the 2013 Census show that growth continued to occur across all local board areas in Auckland, although it is slightly muted when compared with the previous inter-censal period. This section outlines population growth in Auckland prior to discussing Manurewa in particular.

2.1 Auckland's growth slows but remains high

The 2013 usually resident population count for Auckland was 1,415,500, constituting 34.0 per cent of New Zealand's total population.

This was an increase of 110,589 people in the seven years since the previous census. Auckland gained the largest number of residents of any local government area in New Zealand and just over half (51.7%) of New Zealand's population growth occurred in Auckland.

Auckland experienced a higher percentage change in population between 2006 and 2013 than did New Zealand overall – 8.5 per cent compared with 5.3 per cent. However, Auckland's percentage change was not as high as some other local government areas across New Zealand, including Selwyn District (32.6%) and Queenstown Lakes District (22.9%).

The average annual growth for Auckland was 1.2 per cent, half of that from the previous inter-censal period (2.4%). This slow-down in the rate of population growth between 2006 and 2013 is likely to be a result of several factors, including a decline in net migration, as the impact of the Global Financial Crisis took effect.

2.2 Manurewa's population continues to grow

The 2013 usually resident population count for Manurewa was 82,242, constituting 5.8 per cent of Auckland's total population.

The usually resident population of Manurewa increased by 5,052 (6.5%) between the 2006 and 2013 Censuses. The average annual change between 2006 and 2013 in Manurewa was 0.9 per cent – a slightly lower average annual change than for Auckland as a whole (1.2%).

As in Auckland as a whole, the average annual growth in Manurewa was lower in the 2006-2013 inter-censal period than in the 2001-2006 inter-censal period (3.3%).

Table 1: Usually resident population, 2001 to 2013

	Numbers of usual residents			Percentage change (%)		Annual average change (%)	
	2001	2006	2013	2001 to 2006	2006 to 2013	2001 to 2006	2006 to 2013
Manurewa	65,586	77,190	82,242	17.7	6.5	3.3	0.9
Auckland	1,160,271	1,304,958	1,415,550	12.5	8.5	2.4	1.2

3.0 Cultural diversity

This section outlines the ethnic composition of Manurewa in 2013, and also briefly discusses main languages spoken.

Statistics New Zealand identifies ethnicity as a measure of cultural affiliation, as opposed to race, ancestry, nationality or citizenship. In line with previous censuses, people could identify with more than one ethnicity. All responses are included in the data so tables showing proportions may add up to more than 100 per cent.

3.1 Manurewa's population is ethnically diverse

At the 2013 Census, 36.8 per cent of the Manurewa usually resident population identified as European, compared with 59.3 per cent across Auckland as a whole.

Māori and Pacific ethnic identities were significantly more prevalent in Manurewa than in Auckland as a whole. In 2013, a third of Manurewa's population identified with a Pacific ethnic group, compared to 14.6 per cent in Auckland as a whole.

While those identifying as Māori constituted 10.7 per cent of Auckland's population, 25.3 per cent of Manurewa's population identified as Māori. Furthermore, 13.4 per cent of Auckland's Māori population lived in Manurewa at the time of the 2013 Census.

Usual residents classified under the broad Asian ethnic category made up 20.3 per cent of the population in Manurewa and 23.1 per cent of the population in Auckland as a whole.

The Middle Eastern, Latin American and African (MELAA) population accounted for a slightly higher proportion of Manurewa's population at 2.3 per cent, compared to 1.9 per cent in Auckland as a whole.

Table 2: Ethnicity, 2013

	Manurewa		Auckland	
	Count	%	Count	%
European	27,897	36.8	789,306	59.3
Māori	19,131	25.3	142,767	10.7
Pacific Peoples	25,020	33.0	194,958	14.6
Asian	15,381	20.3	307,233	23.1
MELAA	1,770	2.3	24,945	1.9
Other	519	0.7	15,639	1.2
Total people specifying ethnicity	75,714	118.5	1,331,427	110.8
Not elsewhere included	6,525		84,123	
Total people	82,242		1,415,550	

Notes:

MELAA refers to Middle Eastern, Latin American and African.

People could choose more than one ethnicity and categories are not exclusive. Percentages will add to more than 100.

Percentages exclude 'not elsewhere included'.

3.2 Broad changes since 2006

The graphs below show the changes in the ethnic composition of Auckland and Manurewa between the 2006 and 2013 Censuses. While there has been growth in the proportions of the population in Manurewa who identify with Pacific and Asian ethnic identities, the numbers of usual residents identifying as Māori decreased from 19,791 (27.5% of the population) in 2006 to 19,131 (25.3%) in 2013. There has been a notable decrease in proportions classified as Other in both areas - some reasons for this are discussed below.

Figure 1: Auckland ethnic groups, 2006 and 2013 (%)

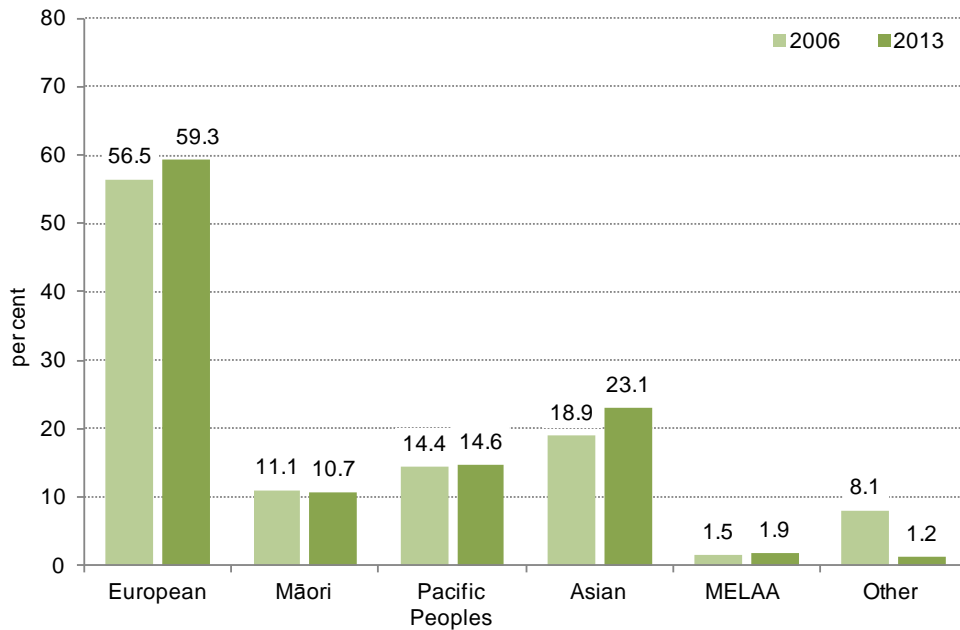
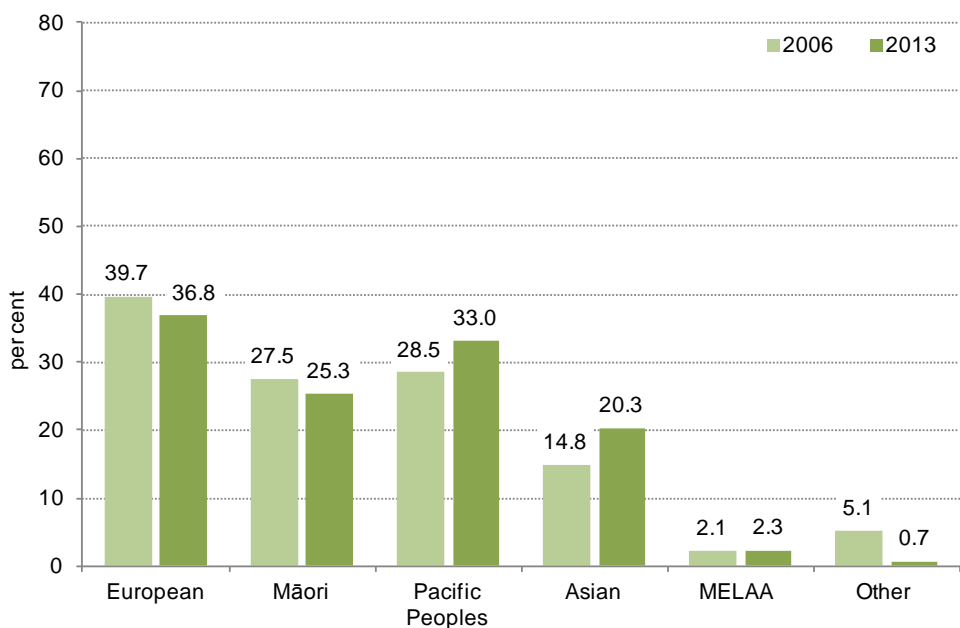


Figure 2: Manurewa ethnic groups, 2006 and 2013



Notes:

MELAA refers to Middle Eastern, Latin American and African.

People could choose more than one ethnicity and categories are not exclusive. Percentages will add to more than 100.

The decrease in the Other ethnic category was a national trend and is due in large part to a substantial drop in the numbers who identified as New Zealander. In both 2006 and 2013, almost all Other responses were New Zealander responses. However, the numbers of New Zealander responses declined from a high of 99,474 in 2006 to 14,904 in 2013 in Auckland as a whole, and from 3,669 to 468 in Manurewa. The high numbers of New Zealander responses recorded in the 2006 Census were the result of an email campaign and public discussion in the lead-up to the census.¹

3.3 Decline in European ethnic groups

In Manurewa, the proportion of the population identifying with European ethnic groups declined from 39.7 per cent (28,548 usual residents) in 2006 to 36.8 per cent (27,897 usual residents) in 2013. The table below shows that there has been a decline in the numbers of residents identifying with all major European ethnic groups in Manurewa.

Table 3: Changes in five largest European groups, 2006 to 2013

	Manurewa			Auckland		
	2006	2013	Change 2006 to 2013 (%)	2006	2013	Change 2006 to 2013 (%)
New Zealand European	25,731	25,314	-1.6	611,901	696,966	13.9
British and Irish	1,500	1,137	-24.2	35,067	35,379	0.9
Dutch	318	309	-2.8	7,785	7,995	2.7
Australian	345	246	-28.7	8,637	7,062	-18.2
German	198	177	-10.6	4,227	4,785	13.2
Total people specifying ethnicity	71,862	75,717	5.4	1,239,051	1,331,427	7.5

Notes:

This table shows the five largest European groups within the Manurewa local board area at Level 3 classification as at 2013. People could choose more than one ethnicity and groups are not exclusive. Percentages will add to more than 100.

3.4 Growth in the Asian population

In 2013, 20.3 per cent of the Manurewa population identified with an Asian ethnic group, up from 14.8 per cent in 2006.

The five largest Asian ethnic groups in Manurewa are shown in Table 4 below. Indian is the largest sub-group constituting 12.6 per cent of the total population in Manurewa, up from 8.1 per cent in 2006.

As the table shows, the following groups experienced significant growth between 2006 and 2013:

- Filipino – increased by 91.2 per cent to 1,107 usual residents
- Indian – increased by 63.3 per cent to 9,558 usual residents
- Chinese – increased by 13.3 per cent to 2,424 usual residents.

¹ For more information, refer to a report prepared in 2007 by Statistics New Zealand on who identified as 'New Zealander' <http://www.stats.govt.nz/Census/about-2006-census/profile-of-nzer-responses-ethnicity-question-2006-census.aspx>

Table 4: Changes in five largest Asian groups, 2006 to 2013

	Manurewa			Auckland		
	2006	2013	Change 2006 to 2013 (%)	2006	2013	Change 2006 to 2013 (%)
Indian	5,853	9,558	63.3	74,460	106,329	42.8
Chinese	2,139	2,424	13.3	98,418	118,230	20.1
Filipino	579	1,107	91.2	9,825	20,499	108.6
Cambodian	714	771	8.0	3,372	4,188	24.2
Vietnamese	549	579	5.5	3,174	4,362	37.4
Total people specifying ethnicity	71,862	75,717	5.4	1,239,051	1,331,427	7.5

Notes:

This table shows the five largest Asian groups within the Manurewa local board area at Level 3 classification as at 2013. People could choose more than one ethnicity and groups are not exclusive. Percentages will add to more than 100.

3.5 Growth in Pacific ethnic groups

The number of Manurewa usual residents identifying with a Pacific ethnic identity increased from 20,445 (28.5% of the population) in 2006 to 25,020 (33.0%) in 2013 (as shown in Figure 2).

Table 5 presents data for the five largest Pacific sub-groups in Manurewa. Samoan remains the largest Pacific sub-group with 14,313 usual residents in 2013, constituting 18.9 per cent of the local board area's population. The Fijian and Tongan ethnic groups experienced the most significant proportional growth between 2006 and 2013.

Table 5: Changes in five largest Pacific groups, 2006 to 2013

	Manurewa			Auckland		
	2006	2013	Change 2006 to 2013 (%)	2006	2013	Change 2006 to 2013 (%)
Samoan	11,934	14,313	19.9	87,840	95,916	9.2
Cook Islands Maori	4,587	5,172	12.8	34,788	36,810	5.8
Tongan	2,955	4,374	48.0	40,140	46,971	17.0
Niuean	1,698	2,040	20.1	17,667	18,555	5.0
Fijian	423	927	119.1	5,847	8,493	45.3
Total people specifying ethnicity	71,862	75,717	5.4	1,239,051	1,331,427	7.5

Notes:

This table shows the five largest Pacific groups within the Manurewa local board area at Level 3 classification as at 2013. People could choose more than one ethnicity and groups are not exclusive. Percentages will add to more than 100.

3.6 Te reo Māori and Samoan more prevalent in Manurewa

English was the most common language in which people could hold a conversation about everyday things, with 1,233,633 speakers in Auckland (95.6% of the usual resident population) and 68,433 speakers in Manurewa (94.5%).

Te reo Māori was more common in Manurewa (4,842 speakers; 6.7% of usual residents) than in Auckland as a whole (30,927 speakers; 2.4%).

Samoan and Tongan were more common in Manurewa than in Auckland as a whole. In Manurewa, Samoan was spoken by 12.5 per cent of the population (9,078 speakers), and Tongan was spoken by 3.1 per cent of the population (2,223 speakers).

Hindi was spoken by 6.7 per cent of the population (4,842 speakers) in Manurewa, compared to 3.8 per cent in Auckland as a whole (49,518 speakers).

East Asian and European languages were less prevalent in Manurewa than in Auckland as a whole.

Table 6: Top 12 languages spoken, 2013

	Manurewa		Auckland	
	Count	%	Count	%
English	68,433	94.5	1,233,633	95.6
Samoan	9,078	12.5	58,200	4.5
Hindi	4,842	6.7	49,518	3.8
Māori	4,560	6.3	30,927	2.4
Tongan	2,223	3.1	26,028	2.0
Tagalog	780	1.1	14,925	1.2
Yue ⁽¹⁾	660	0.9	30,681	2.4
Northern Chinese ⁽²⁾	600	0.8	38,781	3.0
Afrikaans	456	0.6	13,992	1.1
Sinitic not further defined ⁽³⁾	375	0.5	30,282	2.3
New Zealand sign language	336	0.5	5,262	0.4
French	216	0.3	17,433	1.4
Total people stated	74,073	140.1	1,316,262	134.1
Not elsewhere included	8,277		101,961	
Total people	82,242		1,415,550	

Notes:

- 1) Includes Cantonese
- 2) Includes Mandarin
- 3) Includes Chinese languages not further defined.

People could identify more than one language so percentages will not add to 100.

Percentages calculated excluding 'not elsewhere included' and 'too young to talk' responses.

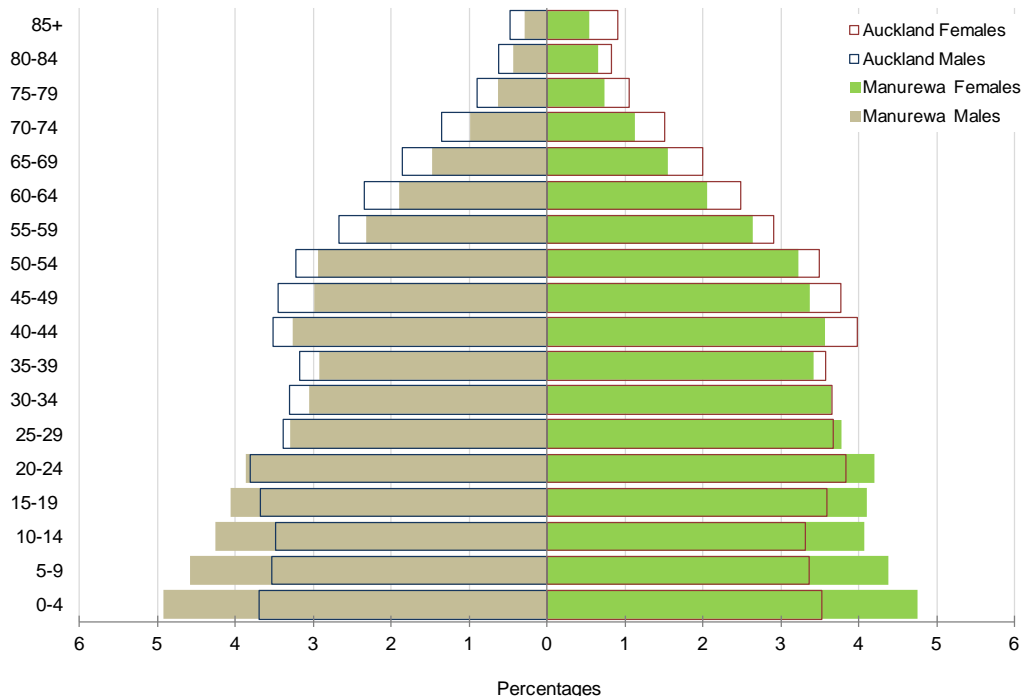
4.0 Age

At the time of the 2013 Census, the median age in Manurewa was 29.8 years, compared to 35.1 in Auckland as a whole.

4.1 High proportions of children in Manurewa

Manurewa has a notably youthful population (see Figure 3). In 2013, the proportions of children in Manurewa were high compared to Auckland as a whole (27.0% aged 0 to 14 years compared with 20.9%), and the proportions of those aged 65 years and over were relatively low (8.4% compared with 11.5% for Auckland). This is in part a result of the high proportions of ethnic groups with high fertility rates (Pacific peoples and Māori) living in this local board area.

Figure 3: Age-sex structure, Manurewa compared with Auckland, 2013

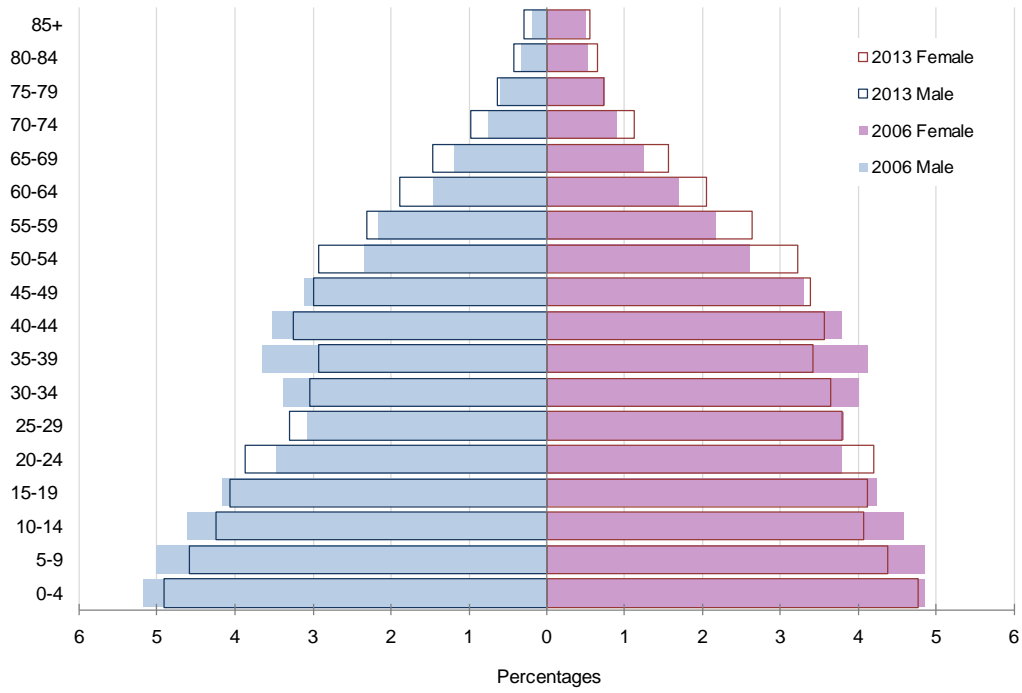


4.2 Older population growing

Auckland experienced a 26.9 per cent increase in the number of usual residents who were aged 65 years and over between 2006 and 2013, equating to an additional 34,600 older people since 2006. This is a part of a long-term national and global trend of population ageing that has arisen as people live longer and fertility rates decline. Ageing means that there will be numerically and proportionately more people in older age groups over the next few decades. As the age-sex structure (Figure 4) shows, this is also occurring in Manurewa.

The number of usual residents aged 65 years and over in Manurewa increased between 2006 and 2013, from 5,391 to 6,933 (28.6% growth). If one considers older age groups more broadly, growth is even more apparent. The proportion of Manurewa's population aged over 50 years has increased from 19.4 per cent (15,006 usual residents) to 23.5 per cent (19,311).

Figure 4: Age-sex structure, Manurewa, 2006 and 2013



5.0 Work and income

This section describes the work and labour force status of adults (usual residents aged 15 years and over). People were defined as employed if they worked for one hour or more for pay or profit, or without pay in a family farm, business, or professional practice, or if they had a job but were not at work for some reason.

People were defined as 'not in the labour force' if they were not employed and were not actively seeking work. This includes students, people caring for children or other family members, retired people, and people who were unable to work for some reason such as illness or disability.

The unemployment rate is the number of people aged 15 years and over who did not have a paid job, were available for work, and were actively seeking work, expressed as a percentage of the labour force. Please note that the official unemployment rate in New Zealand is calculated by Statistics New Zealand using the quarterly Household Labour Force Survey. Also, the data presented here masks fairly significant variation in unemployment rates between 2006 and 2013, particularly following the Global Financial Crisis (GFC).

5.1 Lower proportions of Manurewa residents employed

At the time of the 2013 Census, there were 650,610 employed adults in Auckland as a whole and 30,453 in Manurewa. In Auckland, those who were employed made up 61.5 per cent of adults, down from 64.7 per cent in 2006. In Manurewa the proportion of adults who were employed was lower at 54.8 per cent, and had declined from 61.0 per cent in 2006.

Table 7: Work and labour force status,⁽¹⁾ for the census usually resident population count aged 15 and over, 2006 and 2013

	Manurewa				Auckland			
	2006		2013		2006		2013	
	Count	%	Count	%	Count	%	Count	%
Employed full-time	25,827	50.3	24,906	44.8	496,071	51.1	513,204	48.5
Employed part-time	5,520	10.7	5,547	10.0	132,777	13.7	137,406	13.0
Unemployed ⁽²⁾	2,742	5.3	4,683	8.4	37,305	3.8	57,483	5.4
Not in labour force	17,283	33.6	20,460	36.8	305,358	31.4	349,923	33.1
Total people stated	51,372	100.0	55,596	100.0	971,514	100.0	1,058,016	100.0
Work and labour force status unidentifiable	3,360		4,458		44,334		61,179	
Total people	54,732		60,054		1,015,848		1,119,195	
<i>Subtotals</i>								
Total people in labour force	34,086	66.4	35,139	63.2	666,156	68.6	708,093	66.9
Total people employed	31,347	61.0	30,453	54.8	628,851	64.7	650,610	61.5
<i>Unemployment rate⁽³⁾</i>		8.0		13.3		5.6		8.1

Notes:

- 1) A person's work and labour force status in the seven days ending 5 March 2006 and 3 March 2013.
- 2) The number and proportion of adults who are unemployed.
- 3) The proportion of adults *in the labour force* who are unemployed.

All percentages are calculated as a proportion of 'Total people stated', except for the unemployment rate which is calculated as a proportion of 'Total people in labour force'.

The unemployment rate increased between 2006 and 2013, from 5.6 per cent (of those in the labour force) to 8.1 per cent in Auckland, and from 8.0 per cent to 13.3 per cent in Manurewa. Changes in employment and unemployment reflect the economic slowdown that resulted from the GFC.

A third of Auckland adults (349,923 usual residents aged 15 and over) were not in the labour force in 2013. The proportion of adults not in the labour force was a little higher in Manurewa, at 36.8 per cent (19,005).

5.2 Rise in employment for people aged 65 years and over

Between 2006 and 2013 the proportion of those aged 65 years and over who were employed increased in Auckland from 17.1 per cent to 22.0 per cent, and in Manurewa from 16.0 per cent to 19.1 per cent.

5.3 Rise in unemployment for young people

In Auckland, the unemployment rate for young people (those aged 15-24 years) rose between 2006 and 2013 from 14.3 per cent (16,986 usual residents) to 20.3 per cent (22,815 usual residents). In Manurewa the unemployment rate for young people was much higher, increasing from 18.1 per cent (1,245 usual residents) in 2006 to 28.9 per cent (1,896 usual residents) in 2013. This was the second highest youth unemployment rate among Auckland's local board areas.

There was also a general decline in young people's labour force participation between 2006 and 2013. In Auckland, 56.7 per cent of young people were in the labour force in 2013 down from 62.7 per cent in 2006. In Manurewa, 53.6 per cent of young people were in the labour force in 2013 down from 60.8 per cent in 2006.

5.4 Median incomes relatively low

The median personal income for adults (people aged 15 years and over) in Manurewa was \$24,700 per annum – lower than that for Auckland as a whole at \$29,600. Furthermore, a smaller proportion of adults in Manurewa (2.3%) had a personal income of over \$100,000 per annum than in Auckland as a whole (7.4%).

A personal income of \$20,000 or less was reported by 44.2 per cent of adults in Manurewa, compared to 39.0 per cent in Auckland as a whole.

In 2013, the median household income in Manurewa \$67,800 per annum, compared to \$76,500 for Auckland as a whole.

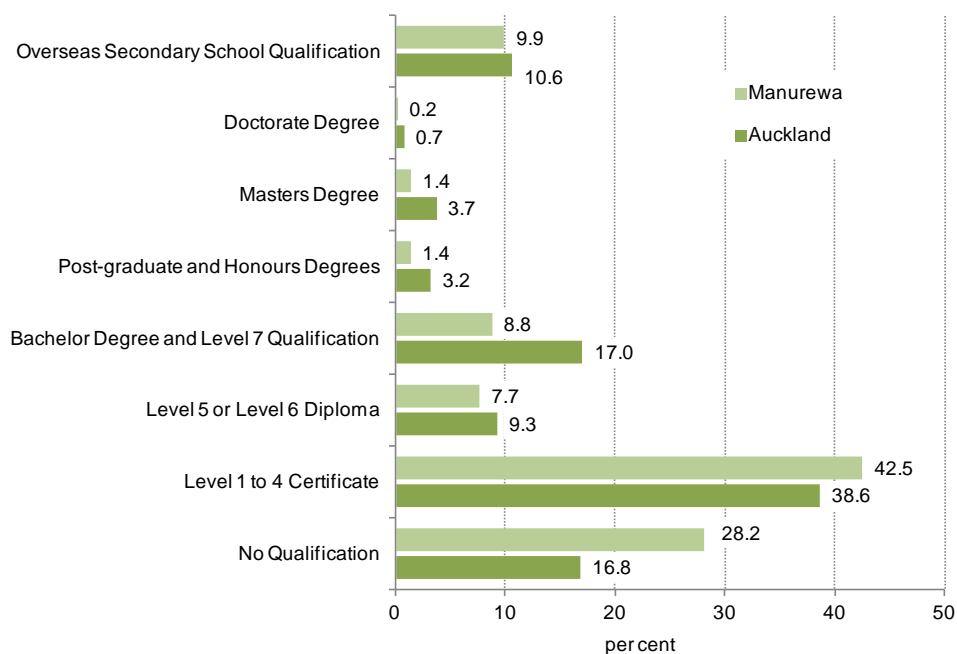
6.0 Formal education qualifications

Statistics New Zealand identify a formal qualification as a formally recognised award for educational or training attainment that requires at least three months of full-time study (or the part-time equivalent).

6.1 Qualifications in Manurewa relatively low

The graph below shows the highest education qualifications of adults (people aged 15 years and over) in Auckland as a whole and in Manurewa. In 2013, higher proportions of Manurewa adults had no qualification at 28.2 per cent, compared to 16.8 per cent for Auckland as a whole. Level 1 to 4 qualifications were also more common in Manurewa (42.5 per cent of adult residents) than in Auckland as a whole (38.6%). This may in part reflect the age structure in Manurewa, i.e., higher proportions of the population too young to have yet attained tertiary qualifications, as well as the employment and economic context of this local board area.

Figure 5: Highest qualification, for people aged 15 and over, 2013



6.2 Increase in levels of qualifications

The number and proportion of adults with higher educational qualifications are increasing in Auckland as a whole, and in Manurewa. In 2013, 83.2 per cent of all Auckland adults (people aged 15 years and over) had a formal qualification, up from 79.7 per cent in 2006. In Manurewa the proportion of adults with a formal qualification increased from 66.1 per cent in 2006 to 71.8 per cent in 2013.

Nearly a quarter (24.6%) of adults in Auckland had a university degree or equivalent in 2013, up from 19.9 per cent in 2006. The percentage of those with a university degree or equivalent in Manurewa was lower, but increased from 8.4 per cent in 2006 to 11.7 per cent in 2013.

7.0 Households and dwellings

Statistics New Zealand define a 'household' as either one person who usually resides alone, or two or more people who usually reside together and share facilities (such as eating facilities, cooking facilities, bathroom facilities, and a living area), in a private dwelling. A family is defined as a couple, with or without child(ren), or one parent and their child(ren), all of whom have usual residence together in the same household. The children do not have partners or children of their own living in the household. A household can contain one or more families, or can contain no families at all.

A dwelling is defined as a structure, part of a structure, or group of structures that is used, or intended to be used as a place where people reside. It may be permanent or temporary and may function as private or non-private (e.g., providing short- or long-term communal or transitory type accommodation).

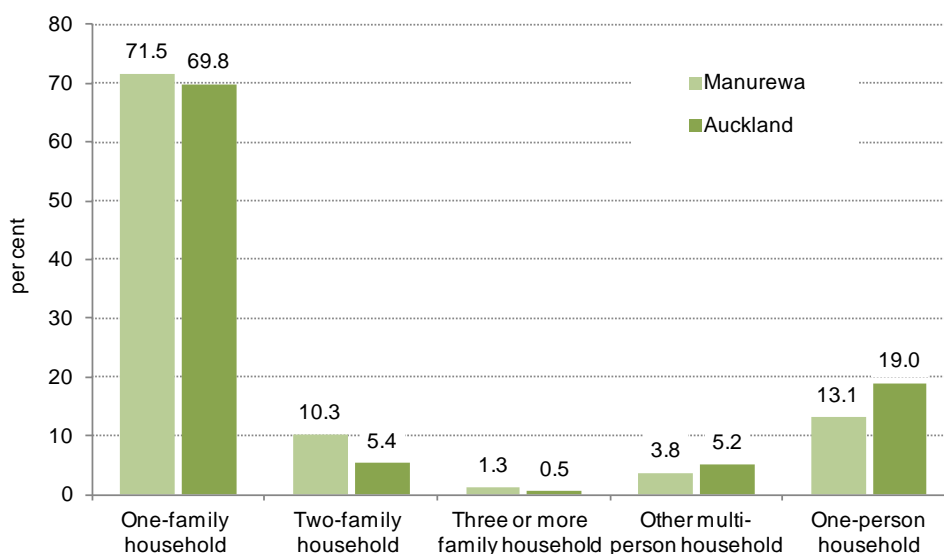
At the 2013 Census, a total of 22,662 households and 22,713 occupied private dwellings were recorded in Manurewa.

7.1 Multi-family households more prevalent in Manurewa

In 2013, one-family households were the most common type of household in Manurewa, making up 71.5 per cent of households. In Auckland as a whole, one-family households constituted 69.8 per cent of households.

Two-family and three or more family households were more common in Manurewa than in Auckland as a whole. In Manurewa two-family households constituted 10.3 per cent of households compared to only 5.4 per cent in Auckland as a whole.

Figure 6: Household composition, 2013



7.2 Increase in two-family households

In Manurewa there was an increase between 2006 and 2013 in the numbers of all household types, except one-person households. There was a decline in the proportions of households consisting of a single family (from 73.3% to 71.5%) and an increase in the proportions of households consisting of two families (from 8.1% to 10.3%), as well as three or more families (from 0.9% to 1.3%).

Table 8: Changes in household composition, 2006 to 2013

	Manurewa		Auckland	
	Change 2006 to 2013 (Count)	Change 2006 to 2013 (%)	Change 2006 to 2013 (Count)	Change 2006 to 2013 (%)
One-family household*	207	1.4	20,496	6.9
Two-family household*	537	31.9	6318	34.5
Three or more family household*	84	43.8	747	44.4
Other multi-person household	42	5.5	912	4.0
One-person household	-54	-1.9	3,660	4.4
Total households stated	810	3.9	32,124	7.6
Household composition unidentifiable	198	21.6	3,105	26.7
Total households	1,011	4.7	35,232	8.1

Notes:

* with or without other people.

7.3 Most dwellings are separate houses

In 2013, three quarters (74.7%) of the occupied dwellings in Auckland were separate houses. This proportion was higher in Manurewa, at 87.3 per cent. Attached dwellings – i.e., two or more flats/ units/ townhouses/ apartments/ houses joined together – were less prevalent in Manurewa at 12.5 per cent, than in Auckland as a whole at 24.8 per cent.

While there have been small increases in Manurewa in the numbers of attached dwellings and separate houses between 2006 and 2013, proportions of dwellings in each type remain relatively unchanged.

7.4 Unoccupied dwellings less prevalent in Manurewa

The number of unoccupied dwellings in Manurewa increased from 963 in 2006 to 1,047 in 2013. The proportion of dwellings in this local board that were unoccupied also increased from 4.2 per cent in 2006 to 4.4 per cent in 2013.²

Unoccupied dwellings were less prevalent in Manurewa than in Auckland as a whole where they constituted 6.6 per cent of all dwellings in 2013.

² Note that these figures do not include dwellings under construction.

8.0 Home ownership

Census data provides information on ownership level of the dwelling by the people who live in it, as at the time of the census. Census does not provide information on ownership of any other dwellings or properties by those people.

8.1 Home ownership low and declining

In 2013, 54.7 per cent of households in private occupied dwellings in Manurewa owned the dwelling, or held that dwelling in a family trust. The home ownership rate (this includes both dwellings owned by occupants and those held in family trusts) was lower in Manurewa than in Auckland as a whole (61.5%).

In line with long-term trends, the home ownership rate in Manurewa declined from 59.4 per cent in 2006.

Figure 7: Tenure in Manurewa, 2013

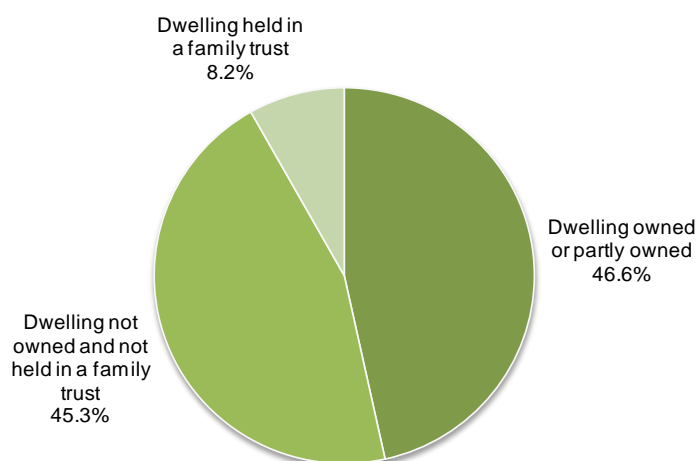


Table 9: Changes in tenure, 2006 to 2013

	Manurewa			Auckland		
	2006	2013	Change 2006 to 2013 (%)	2006	2013	Change 2006 to 2013 (%)
Owned or part owned	10,206	9,498	-6.9	204,711	201,411	-1.6
Held in a family trust	1,422	1,668	17.3	52,791	67,533	27.9
Not owned and not held in a family trust	7,938	9,237	16.4	145,953	168,708	15.6
Total households stated	19,566	20,403	4.3	403,455	437,649	8.5
Not elsewhere included	2,085	2,256	8.2	30,810	31,851	3.4
Total households	21,651	22,662	4.7	434,265	469,500	8.1

Summary Data

	Manurewa	Auckland	New Zealand
Population			
2013	82,242	1,415,550	4,242,048
2006	77,190	1,304,958	4,027,947
2001	65,586	1,160,271	3,737,280
Growth 2006 to 2013: Numbers	5,052	110,592	214,101
Growth 2006 to 2013: %	6.5	8.5	5.3
Age: Numbers			
Under 15 years	22,185	296,358	865,632
15 to 64 years	53,124	956,034	2,769,387
65 years and over	6,933	163,152	607,032
Total	82,242	1,415,544	4,242,051
Age: %			
Under 15 years	27.0	20.9	20.4
15 to 64 years	64.6	67.5	65.3
65 years and over	8.4	11.5	14.3
Total	100.0	100.0	100.0
Ethnicity: Numbers			
European	27,897	789,306	2,969,391
Māori	19,131	142,767	598,602
Pacific Peoples	25,020	194,958	295,941
Asian	15,381	307,233	471,708
MELAA	1,770	24,945	46,956
Other	519	15,639	67,752
Total people who stated an ethnicity	75,714	1,331,427	4,011,402
Ethnicity: %			
European	36.8	59.3	74.0
Māori	25.3	10.7	14.9
Pacific Peoples	33.0	14.6	7.4
Asian	20.3	23.1	11.8
MELAA	2.3	1.9	1.2
Other	0.7	1.2	1.7
Total people who stated an ethnicity	118.5	110.8	110.9
Highest education qualification: numbers (of those aged 15 years and over)			
No qualification	14,112	166,785	628,377
Secondary qualification (Level 1 to 4)	21,291	383,082	1,291,335
Level 5 or Level 6 Diploma	3,846	91,923	278,091
Bachelor degree or Level 7 qualification	4,395	168,924	408,444
Post-graduate and Honours degree	681	31,854	86,598
Masters degree	705	36,792	83,949
Doctorate degree	93	7,428	22,317
Overseas secondary school qualification	4,971	105,201	201,519
Total people stated	50,094	991,986	3,000,633

	Manurewa	Auckland	New Zealand
Highest education qualification: % (of those aged 15 years and over)			
No qualification	28.2	16.8	20.9
Secondary qualification (Level 1 to 4)	42.5	38.6	43.0
Level 5 or Level 6 Diploma	7.7	9.3	9.3
Bachelor degree or Level 7 qualification	8.8	17.0	13.6
Post-graduate and Honours degree	1.4	3.2	2.9
Masters degree	1.4	3.7	2.8
Doctorate degree	0.2	0.7	0.7
Overseas secondary school qualification	9.9	10.6	6.7
Total people stated	100.0	100.0	100.0
Work and labour force status: % (of those aged 15 years and over)			
Employed full time	44.8	48.5	48.0
Employed part time	10.0	13.0	14.3
Unemployed	8.4	5.4	4.8
Not in the labour force	36.8	33.1	32.9
Total	100.0	100.0	100.0
Median personal income \$	\$24,700	\$29,600	\$28,500
Number of occupied dwellings			
Private dwellings	22,713	472,044	1,561,956
Non-private dwellings	39	1,407	8,739
Total occupied dwellings	22,752	473,451	1,570,698
Number of households			
2013	22,662	469,500	1,549,890
Household composition: numbers			
One-family household #	15,414	317,619	1,030,497
Two-family household #	2,220	24,612	47,433
Three or more family household #	276	2,430	3,588
Other multi-person household	810	23,580	72,384
One person household	2,829	86,547	355,242
Total households stated	21,546	454,782	1,509,144
Household composition: %			
One-family household	71.5	69.8	68.3
Two-family household	10.3	5.4	3.1
Three or more family household	1.3	0.5	0.2
Other multi-person household	3.8	5.2	4.8
One person household	13.1	19.0	23.5
Total households stated	100.0	100.0	100.0
Median household income \$	\$67,800	\$76,500	\$63,800
Tenure: %			
Dwelling owned or partly owned	46.6	46.0	49.9
Dwelling held in a family trust	8.2	15.4	14.8
Dwelling not owned and not held in a family trust	45.3	38.5	35.2
Total households stated	100.0	100.0	100.0

With or without other people

Note that in line with Statistics New Zealand conventions, the calculation of percentages excludes 'not elsewhere included' responses.