

## Kaipātiki Local Board Workshop Programme

**Date of Workshop:** Wednesday 1 May 2024  
**Time:** 2.30pm  
**Venue:** MS Teams

Time	Workshop Item	Presenter	Governance role	Proposed Outcome(s)
10.00am – 1.30pm	<b>Additional Kaipātiki Local Board business meeting</b>			
1.30 – 2.30pm	Lunch			
2.30 – 3.30pm	Eke Panuku Development <ul style="list-style-type: none"> <li>Northcote Community Hub and Puāwai Reserve design - <b>online session via MS Teams</b></li> </ul>	<b>Kate Cumberpatch</b> Priority Location Director, Eke Panuku Development  <b>Amir Saadatjoo</b> Senior Project Manager (Capital Project Delivery), Eke Panuku Development	<ul style="list-style-type: none"> <li>Setting direction</li> </ul>	<ul style="list-style-type: none"> <li>Define board position and feedback</li> </ul>
3.30 – 5.00pm	Auckland Transport - <b>online session via MS Teams</b> <ul style="list-style-type: none"> <li>Cresta Ave angle parking</li> <li>Update on final design for Pupuke/Ocean View Intersection</li> </ul>	<b>Marilyn Nicholls</b> Elected Member Relationship Partner, Auckland Transport  <b>David Martin</b> Parking Designer, Auckland Transport  <b>Vukasin Sibinovski</b> Senior Project Engineer, Auckland Transport  <b>Kristina Michel</b> Senior Specialist Comms and Engagement, Auckland Transport  <b>Thayalan Sivachelvan</b> Consultant, Blue Barn	<ul style="list-style-type: none"> <li>Setting direction</li> </ul>	<ul style="list-style-type: none"> <li>Define board position and feedback</li> </ul>

## Next workshop: Wednesday 8 May 2024

<b>8-May-24</b>	9.15am	9.50am	Members only time
	10.00am	12.00pm	LB Annual Planning workshop 9 – Local Board Work Programmes and Performance measures and targets
	12.00pm	2.30pm	Lunch – long lunch break to allow members to get to the city to attend Governing Body workshop and back home again for online afternoon KLB workshop session.
	<b>12.50pm</b>	<b>1.00pm</b>	<b>Chair John Gillon Presentation to Governing Body on LTP</b>
	2.30pm	4.00pm	Customer and Community Services - Connected Communities - <b>online session via MS Teams</b>
	4.00pm	5.00pm	Kaipātiki Local Grant Round Two and Multiboard Grant Round Two - <b>online session via MS Teams</b>

### Role of Workshop:

- (a) Workshops do not have decision-making authority.
- (b) Workshops are used to canvass issues, prepare local board members for upcoming decisions and to enable discussion between elected members and staff.
- (c) Workshops are open to the public however, decisions will be made at a formal, public local board business meeting.
- (d) Members are respectfully reminded of their Code of Conduct obligations with respect to conflicts of interest and confidentiality.
- (e) Workshops for groups of local boards can be held giving local boards the chance to work together on common interests or topics.

# Northcote Community Hub and Puāwai Cadness reserve update

May 2024

# Purpose

Cover off points of clarification received from local board during March feedback workshop.

Formal approval of the concept design will be sought at the 15 May business meeting.



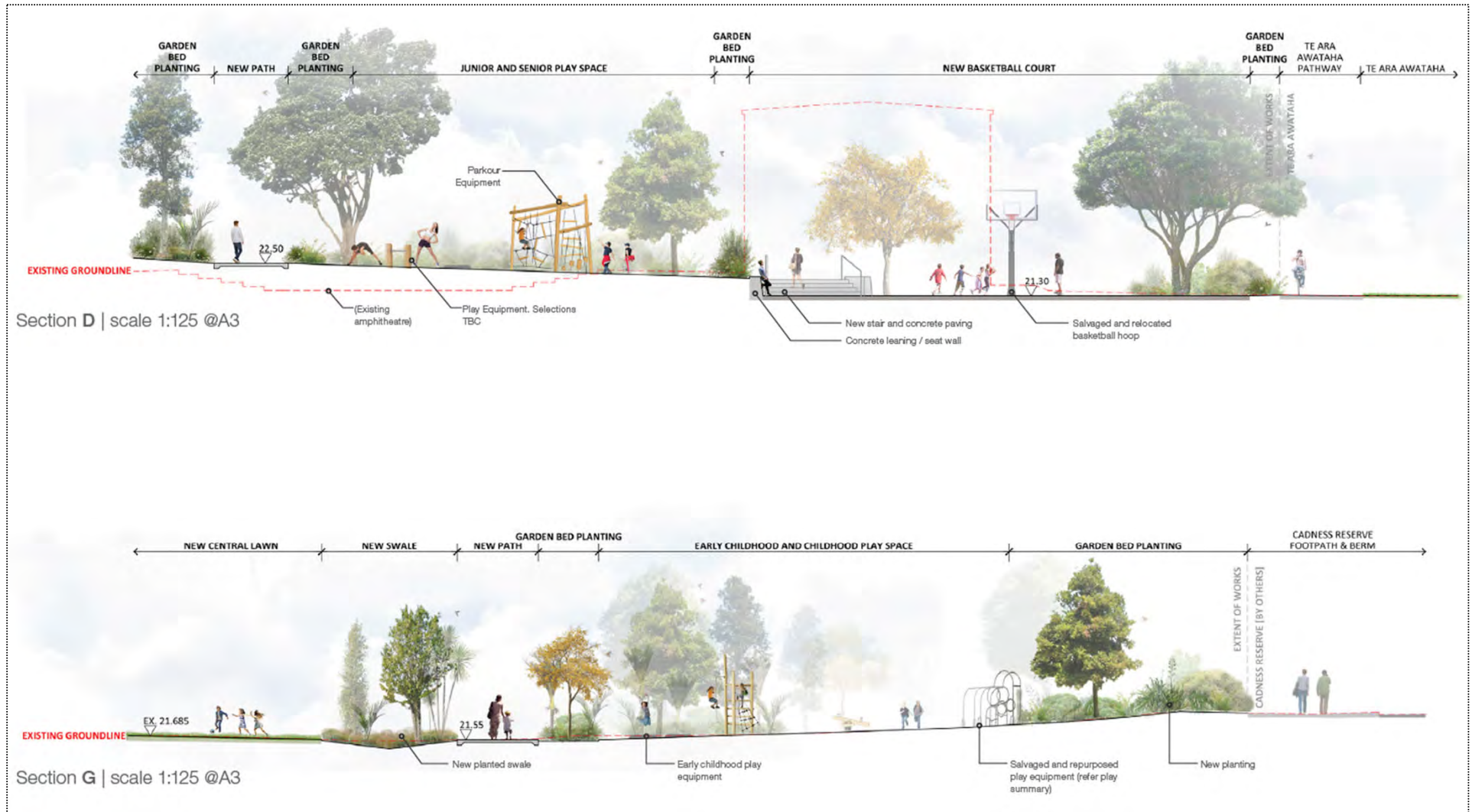
# Concept design development – Open space plan



# Concept design development – Open space section



# Concept design development – Open space section



# Concept design development – Open space area comparison

Existing:



Existing Open Space = 6,389 m<sup>2</sup>

73.5% of the Total Site Area

*Note: includes existing footpaths. Carparking areas and access excluded*

Proposed Design:



Proposed Open Space = 6,868 m<sup>2</sup>

79.0% of the Total Site Area

An increase of +7.5% in total open space



# Concept design development – Tree planting comparison diagram

Existing:



Existing Trees = #25

*Existing tree identification follows Arborlab Town Centre Tree Survey (Jan 2022) with some small trees included as observed on site*

Proposed Design:



Proposed Trees = #92

Existing Trees Retained = #4

Trees Removed = #21

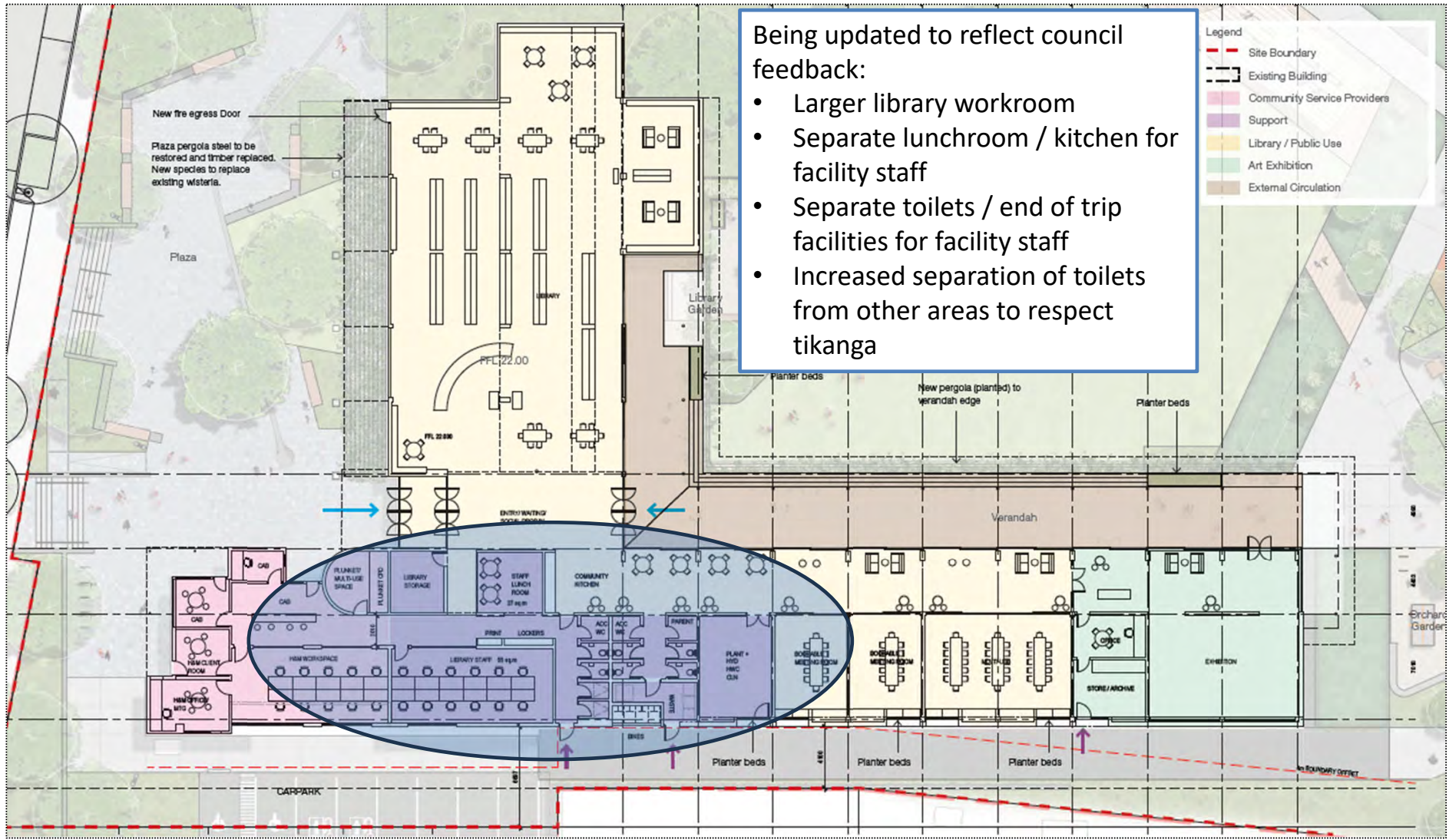
Total Number of Trees = #96

An increase of +284% in the number of trees

*Trees removed are generally small exotic species and/or in poor health*



# Concept design development – Building Floor Plan (To be finalised)



# Concept design development – View from civic plaza/main entry

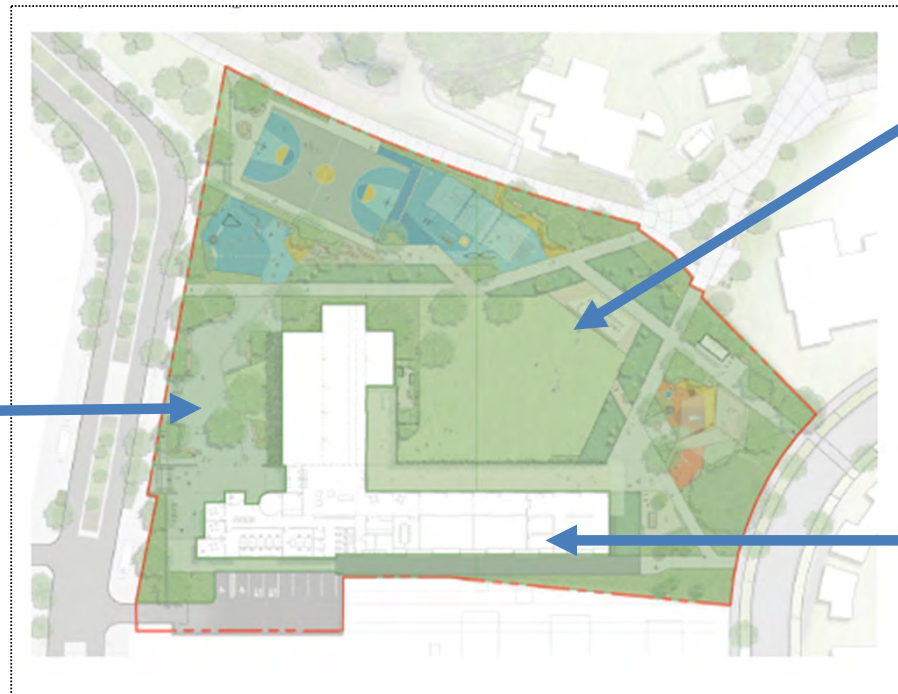


# Concept design development – View from Puāwai Cadness Reserve



# Naming opportunities

**Plaza space / Norman King Square**  
already called Norman King Square – want to keep this?



**Puāwai Cadness Reserve**  
already has a dual name

**Northcote library**  
Opportunity to ask if mana whenua would like to gift a name for the building

# Public engagement

## Background

- The draft concept design is based on feedback from the Community Needs Assessment (2021), library staff, council, mana whenua and Healthy Waters, with final approval of brief from the local board.
- There's limited scope to revise the community hub design due to the requirements from groups/local board and the heritage status of the building.
- We're working with Northcote Intermediate School to ensure we have their input into the Puāwai Cadness Reserve play areas.

## Next Steps

- Following concept design approval, we will continue to engage with the community through inform. This would include local advertising and promotion, possible Our Auckland story, events (4 May Te Ara Awataha day, Recycle City event), signage, posters and social media.
- We'll continue to work with the school and others to help finalize the design for the Puāwai Cadness Reserve play areas.



# Draft recommendations

- Draft recommendations for 15 May business meeting:
  - i. approve the concept design of the Northcote community hub and Puāwai Cadness reserve
  - ii. request mana whenua gift a name for the community hub
  - iii. request mana whenua gift a name for the plaza OR approve the name Norman King Square



# Next steps

- Communication to community on approved design.
- Engage mana whenua artist be involved in identified design opportunities within project scope.
- Ongoing engagement with service providers (library, parks, community tenants, users, schools etc.) throughout develop design process.
- Prepare resource consent documents.
- Library, CAB and potentially H&M relocation to the new space (by early 2024).

# Ngā mihi



**Kaipātiki** Local Board

Cresta Avenue

Local Board Transport Capital Fund



1<sup>st</sup> May 2024 – Workshop



# Purpose of today

- Present a plan of angle parking for Cresta Avenue for the Local Board to decide if they want to take this forward.
- 43 angle parking spaces instead of the current 18 parallel spaces – a net gain of 25 spaces.



# Cresta Ave

Proposed Angle  
Parking



NOT TO SCALE  
Aerial photograph  
might not reflect  
recent changes.

Page 1 of 2

Cresta Avenue, Beach Haven

Proposed Angle parking, BYL

Date: 11/1/2024

For Consultation



# Cresta Ave

Proposed angle parking  
parking



# To note

- Public consultation risk - Angle parking may not be supported by residents as vehicles restrict visibility when exiting driveways.
- This may be less of a concern as the parking is only likely to be fully occupied during sporting events.



Thank you







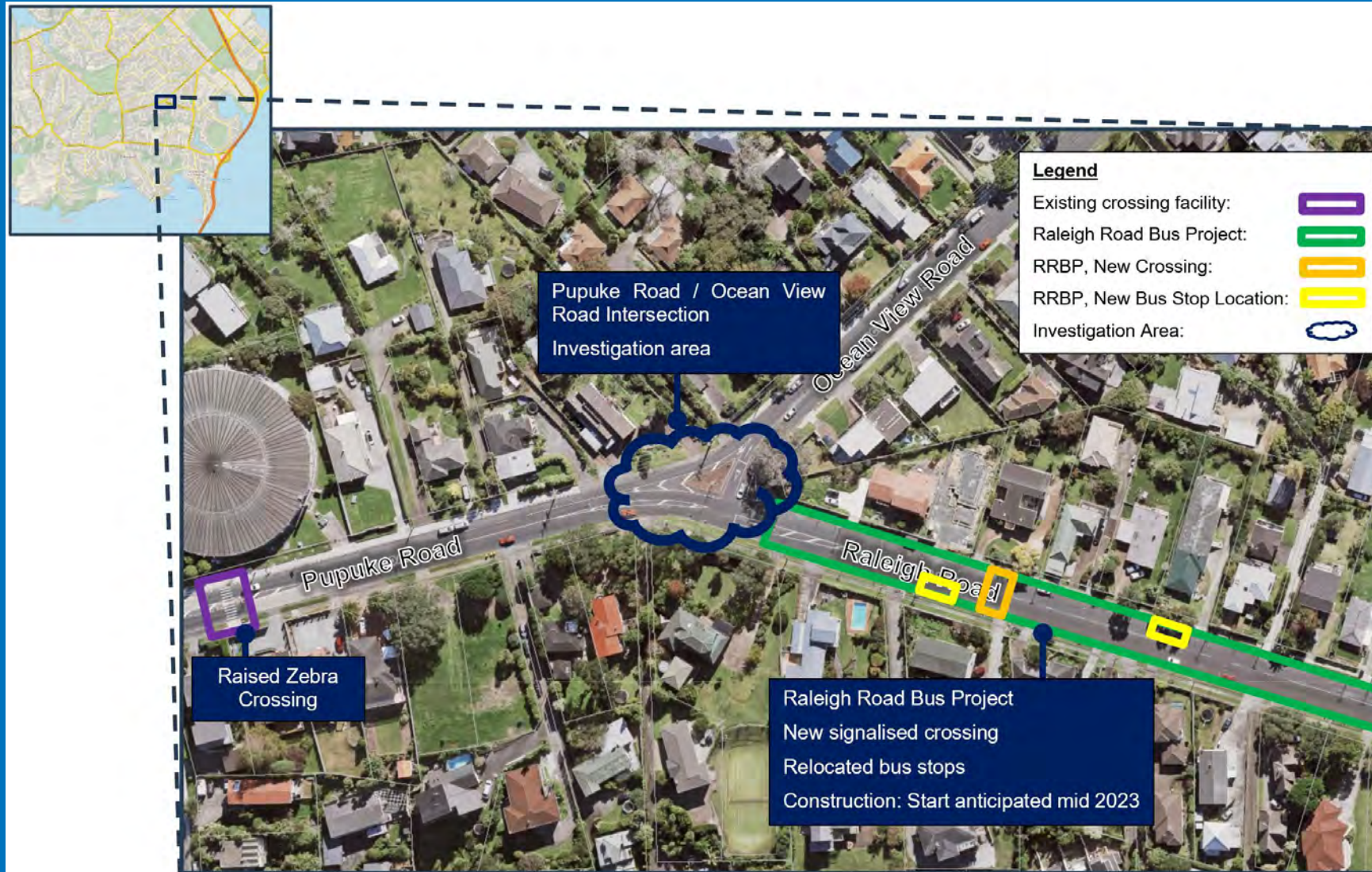
# Pupuke Road / Ocean View Road / Raleigh Road Intersection Improvements



1 May 2024



# Pupuke Road / Ocean View Road Intersection



# Pupuke Road / Ocean View Road Intersection



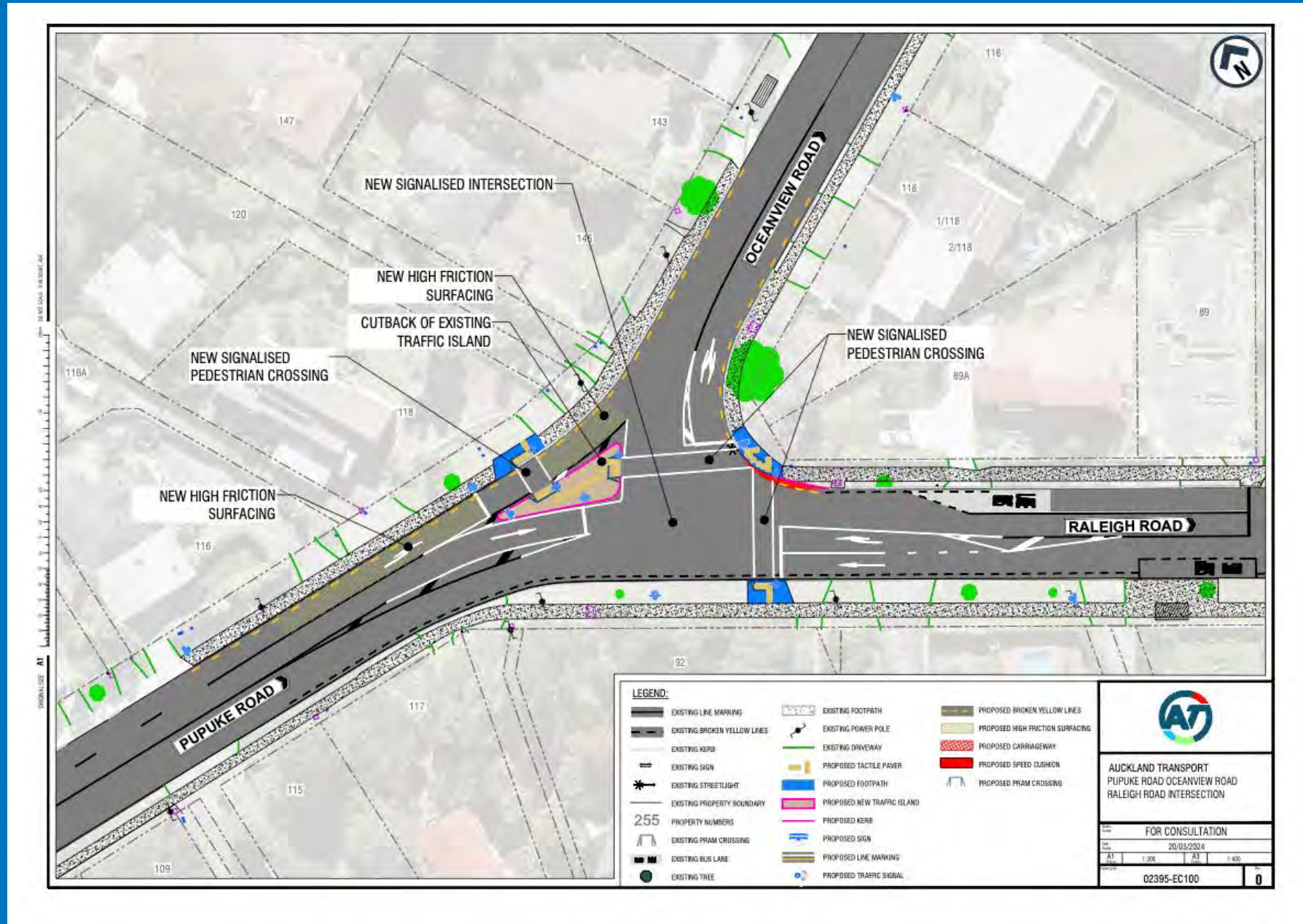
# Pupuke Road / Ocean View Road Intersection



# Pupuke Road / Ocean View Road Intersection



# Pupuke Road / Ocean View Road Intersection – Proposed Improvements



## About the Area\*

### Northcote Central – **Kaipātiki Local Board Area**

- Largest age group: 30-64 years
- Largest 3 racial/ethnic groups:
  - 1) European (38.4%)
  - 2) Asian (32.6%)
  - 3) Pacific Islander (21.2%)
- 41.7% employed full-time. 38.8% not in the labour force.
- **10.5% of the population has one or more ability limitations. Of that percentage, 31.2% are aged 65 and older.**
- 61.1% drive to work. 33% drive (or are driven) to school.
- **12.5% take public transport to work. 24.4% take public transport to school.**
- **15.5% walk to work. 19.2% walk to school.**
- 80.8% of residents have internet access. 85.5% have cell phone access.



\*Place summary data (2018) from Stats NZ: [Place Summaries | Northcote Central \(Auckland\) | Stats NZ](#)

# The Community Consultation

## What we're planning

- Postcard to residents with short URL & QR code linking to consultation website
- Consultation website
- Posters at bus stops near intersection
- Engaging businesses, schools, and other organisations located near intersection
- Geo-targeted social media posts
- Web graphics to share in community newsletters/Facebook groups
- Engaging with health and wellness offices in the area to leave consultation materials in lobbies/waiting areas for patients/visitors to capture those with accessibility needs
- Memos to area emergency services (FENZ, NZ Police, St John)
- Partnering with Kaipātiki Local Board office to identify, target priority stakeholder groups





# The Community Consultation

Our core messaging

- Kaipātiki Local Board and Auckland Transport are working together to make travelling through the Pupuke Road, Ocean View Road and Raleigh Road intersection safer and better for everyone.
- AT would like your feedback on our proposed improvements. They include:
  - Traffic lights at all corners of the intersection
  - Traffic-light controlled crossings across Raleigh Road, Ocean View Road, and the left turn lane from Pupuke Road
  - High friction surfacing on the left turn lane from Pupuke Road to encourage safe turning speeds
  - An upgraded traffic island with footpaths and ramps for people who walk or use a wheelchair
  - Yellow guidance pavers for the visually impaired
  - 'No stopping at all times' lines 6 metres from the intersection on all sides to discourage stopped vehicles that would block traffic and obscure drivers' views
- Learn more at [haveyoursay.at.govt.nz/pupuke-intersection-northcote](https://haveyoursay.at.govt.nz/pupuke-intersection-northcote). To submit feedback, take our online survey, or submit your comments by phone or email. The consultation closes on [date TBD].



# The Community Consultation

How we will collect feedback

- Online survey on consultation website
- Email comments to [ATEngagement@at.govt.nz](mailto:ATEngagement@at.govt.nz)
- Submit comments by phone to AT call centre
- Extend our standard consultation period by 1 week for residents to submit feedback (4-week consultation period total)



# Examples of consultation materials

## Postcard

### Building safer cycling and walking connections in Glen Innes

Construction underway for Links to Glen Innes Cycleways

Links to Glen Innes is a series of cycleways that will connect Glen Innes with the wider Auckland cycle network. These new cycleways will provide a safe and convenient option for you to get out and about - from around town to the city centre.

- More safe transport choices in and around Glen Innes, with cyclists separated from traffic.
- Easier cycle access to work, school, local shops, and community facilities.
- A safer connection for cyclists to Glen Innes train station and onto the new Glen Innes to Tamaki Drive shared path - providing access into Auckland City Centre.
- Improved safety and accessibility of key intersections along the routes for all cyclists and pedestrians.

The first stage on Taniwha Street will be completed in Nov 2023.

**Construction for the next stage is underway!**


For more information, scan the QR code or:  
Visit [at.govt.nz/gleninnescycleways](https://at.govt.nz/gleninnescycleways)  
Email [projects@at.govt.nz](mailto:projects@at.govt.nz) or call us on 09 355 3553



AT - Glen Innes Cycleways A5 v6.indd 1 16/10/23 16:44



## Poster




**Kōrero mai  
Have  
your  
say**

### Wairau Road, View Road, and Kathleen Street upgrades

We're proposing some upgrades to **improve safety** for all travellers through this intersection.


**Take our quick survey**



Learn more and tell us what you think. Scan the code or visit [haveyoursay.at.govt.nz/wairau-intersection](https://haveyoursay.at.govt.nz/wairau-intersection)

**Feedback closes on 19 May 2024**

You can also get in touch by e-mail [ATengagement@at.govt.nz](mailto:ATengagement@at.govt.nz) or call 09 355 3553



ATengagement@at.govt.nz or call 09 355 3553

# Examples of consultation materials

Web tiles (for newsletters/community Facebook group posts)



**Kōrero mai  
Have  
your  
say**

**Kōrero Mai!  
Have your say!**

We're proposing some upgrades to improve safety at the Wairau Road, View Road, and Kathleen Street intersection in Glenfield.

Feedback closes on 19 May 2024.



**Wairau Road, View Road, and Kathleen Street intersection**

Yellow tactile pavers  
Bus stop improvements  
New road markings  
Footpath upgrades  
New traffic signals  
New traffic island  
Cycle ramps



**Take the survey on  
<https://haveyoursay.at.govt.nz/wairau-intersection>**



# Examples of consultation materials

## Consultation website

### Wairau Road at View Road and Kathleen Street, Glenfield - Intersection Upgrade



#### Project background

Everyone across Tāmaki Makaurau Auckland should be able to get to where they need to safely. This includes people in cars, bikes, on foot, scooters, wheelchairs, and other mobility devices.

We have heard from people who live near and travel through the Wairau Road, View Road, and Kathleen Street intersection in Glenfield about their safety concerns with the intersection. We have also discussed the safety concerns with community leaders and stakeholders.

#### Lifecycle

- Open**  
This consultation is open for contributions.
- Under Review**  
Contributions to this consultation are closed for evaluation and review. The project team will report back on key outcomes.
- Final report**  
The final outcomes of the consultation are documented here. This may include a summary of all contributions collected as well as recommendations for future action.

#### Key Dates

 **Consultation period**  
28 April — 19 May 2024

#### Construction drawing of proposed improvements

 [Construction drawing of the proposed improvements](#)  
(1.1 MB) (pdf)



# Examples of consultation materials

## Consultation website

### We also received some feedback that was out of this project's scope.

- A request for no stopping in the small left-hand turn lane into Hogans Road.
- A request for broken yellow lines from Kathleen Street to Hogans Road heading west due to multiple cars parking in the slipway and preventing it from functioning as intended. This would also allow more traffic to flow through before the road tapers to one lane later.
- A suggestion for broken yellow lines to be extended from the corner of View Road all the way up to Hogans Road, as this would encourage cars driving up to Glenfield to stay on the right lane and allow cars to drive on the left lane that will turn left at Hogans Road.
- A concern that more people are crossing the section a few hundred metres up Wairau Road opposite Ellice Road, as there are bus stops on both sides of the road. This location is nearly right on the intersection, and the bend in the road makes visibility of traffic difficult. Suggestion for a signalised pedestrian crossing further down Wairau Road (around #238) that would be in use as required by pedestrians.

We want to thank everyone who participated in the 2020 consultation for their feedback.

Survey

### Wairau Road, View Road, and Kathleen Street – Intersection Upgrade

Do you think the changes would improve safety?

TAKE SURVEY





Thank you

