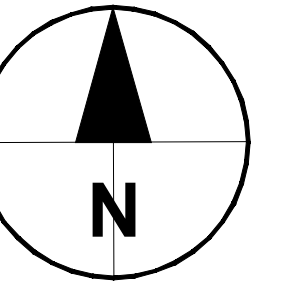


C:\working\ascom_ds10_aui\joseph.delacruz@ascom.com\0153523\SGA-DRG-STH-002-GE-0002.dwg



DRURY TO PUKEKOHE LINK (NoR 2)
(SH22 CONNECTION SEGMENT)
REFER DRG-STH-002-GE-2400

DRURY TO PUKEKOHE LINK (NoR 2)
(DRURY PAERATA LINK SEGMENT)
REFER DRG-STH-002-GE-2100

DRURY TO PUKEKOHE LINK (NoR 2)
(PAERATA ARTERIAL SEGMENT)
REFER DRG-STH-002-GE-2000

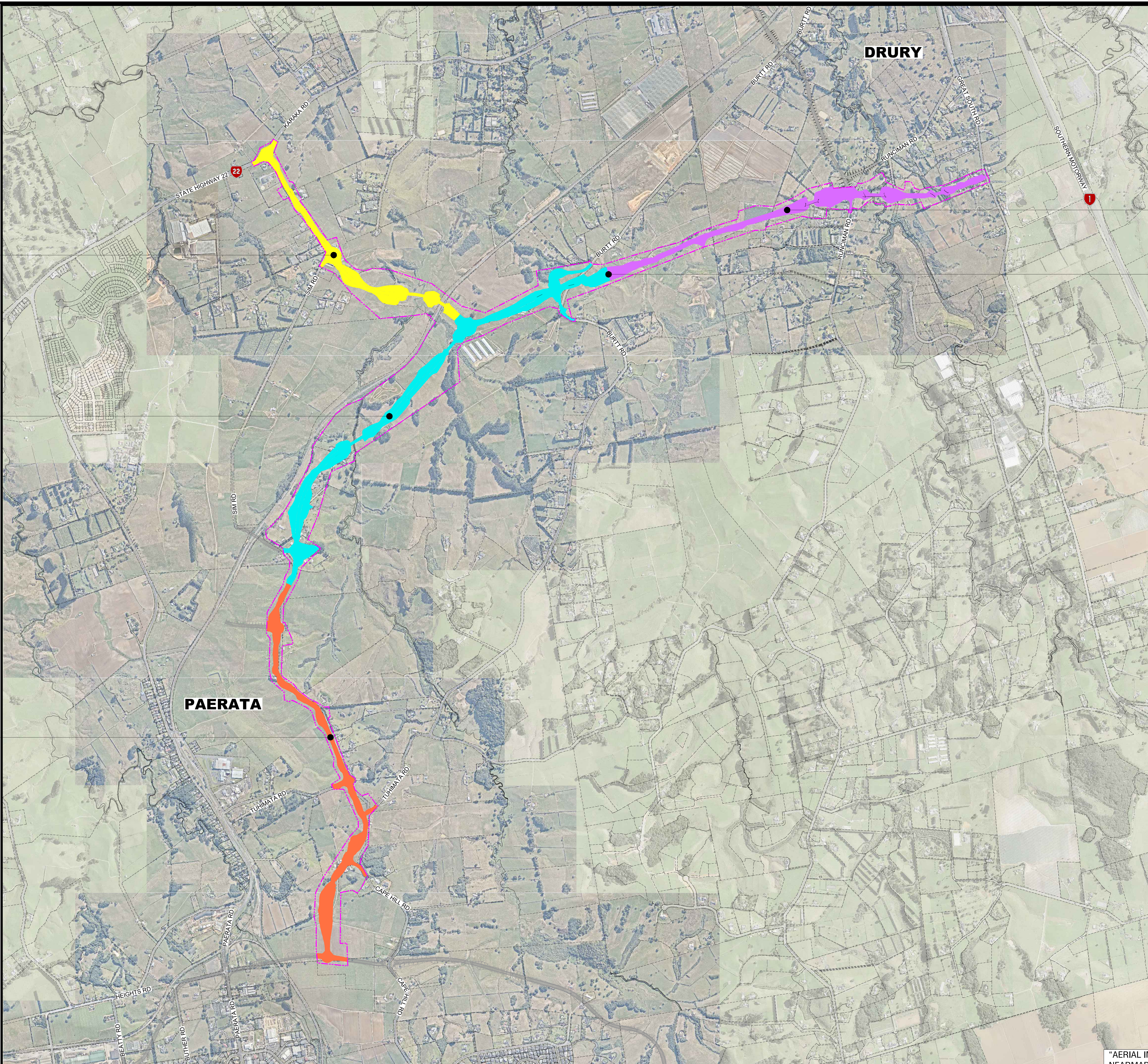
DRURY TO PUKEKOHE LINK (NoR 2)
(SOUTH DRURY CONNECTION SEGMENT)
REFER DRG-STH-002-GE-2300

DRURY TO PUKEKOHE LINK (NoR 2)
(DRURY PAERATA LINK SEGMENT &
SOUTH DRURY CONNECTION SEGMENT)
REFER DRG-STH-002-GE-2200

ORIGINAL SIZE A1

LEGEND

- PROPOSED DESIGNATION
- SH22 CONNECTION SEGMENT
- SOUTH DRURY CONNECTION SEGMENT
- DRURY PAERATA LINK SEGMENT
- PAERATA ARTERIAL SEGMENT
- 1 STATE HIGHWAY 1
- 22 STATE HIGHWAY 22



"AERIAL IMAGERY SUPPLIED BY NEARMAP AUSTRALIA PTY LTD"

NOT FOR CONSTRUCTION

ISSUED FOR NOTICE OF REQUIREMENT LODGEMENT	JDT	JUL. 2023			
DRAFT ISSUE FOR APPROVAL	JDT	APR. 2023			
DRAFT ISSUE FOR REVIEW	VOLT	NOV. 2022			
REVISIONS	DATE				

SURVEYED	N/A	N/A
DRAWN	V. DELA TORRE	JUL. 2023
DRAWING CHECK	J. DELA TORRE	JUL. 2023
DESIGN	S. KUMAR	JUL. 2023
DESIGN REVIEW	H. HICKS	JUL. 2023
APPROVED	B. BUSNARDO	JUL. 2023



Project: **SUPPORTING GROWTH PROGRAMME
PUKEKOHE**

Drawing Title: **DRURY TO PUKEKOHE LINK
OVERALL LAYOUT PLAN**

Drawing Status: LODGEMENT			
Drawing Date: JUL. 2023			
A1	NTS	A3	NTS
Discipline: GENERAL			
Drawing No: SGA-DRG-STH-002-GE-0002			Revision: C