

## Appendix 3 – Consultation record

### Consultation record

#### Redwood Park Golf Club - Private plan change

Name / who	Date of initial consultation	Response received	Action in relation to response
Adjoining and adjacent properties	7 August 2023 (Refer to letter and location map at Attachment A)	Two responses from residents were received. Both responses were in support of the plan change.	No further action required at this stage.
Greg Presland Chairperson Waitākere Ranges Local Board	7 August 2023 (Refer to letter at Attachment B)	To date, no response has been received.	The Local Board will be provided with a copy of the plan change as part of the Auckland Council process.
Mana Whenua (As identified from Auckland Council list)	7 August 2023 (Refer to letter at Attachment C)	Te Kawerau Iwi Tiaki Trust advised they are possibly able to support this plan change but want to understand more about the plan change and also establish a relationship with the owners.	Arrangements for hui are currently underway. The outcomes from the hui will be reflected in an updated consultation record.

Record completed by Tania Richmond

21 August 2023



Redwood Park Golf Club Inc  
13 Knox Road  
Swanson

4<sup>th</sup> August 2023

Dear Resident,

**Private plan change – Redwood Park Golf Club**

Redwood Park Golf Club will soon make a request to Auckland Council to re-zone the golf course land from Residential – Large Lot to Open Space – Sport and Active Recreation.

Only two golf courses in the Auckland Urban Area are not zoned Open Space – Sport and Active Recreation. This zone caters specifically for golfing facilities. The re-zoning will apply the correct zone to land that has been a golf course since the early 1970's.

Redwood Park Golf Club has been part of the Swanson community for over 50 years, and we see this continuing for many years. Most of our members live in the area and value the convenience of a local golf course and the facilities it provides. Re-zoning the land will support the continued use of the land for golfing purposes.

The plan change only relates to the zoning of the land and does not include any physical works. The re-zoning simply matches the correct land zoning to the use of the land for playing golf.

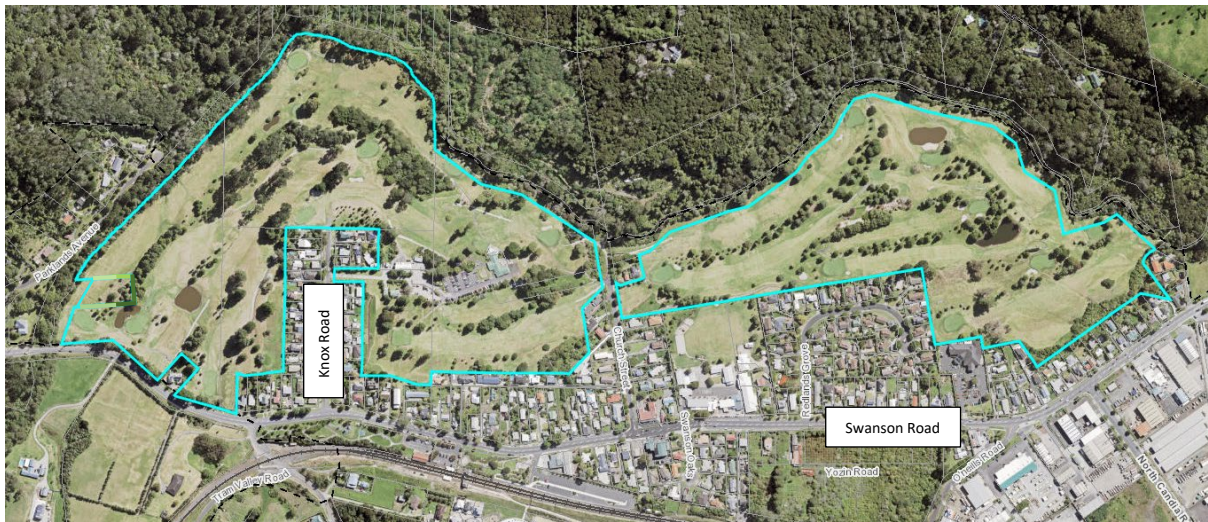
Attachment 1 shows the golf course land and its current zoning.

If you wish to know more or provide feedback on the re-zoning, please do not hesitate to contact me.

Hennie Greeff  
Secretary Manager  
Redwood Park Golf Club Inc  
Phone: 09 833 1280  
Email: [manager@redwoodparkgolf.co.nz](mailto:manager@redwoodparkgolf.co.nz)

Attachment

Figure 1: Land subject to plan change




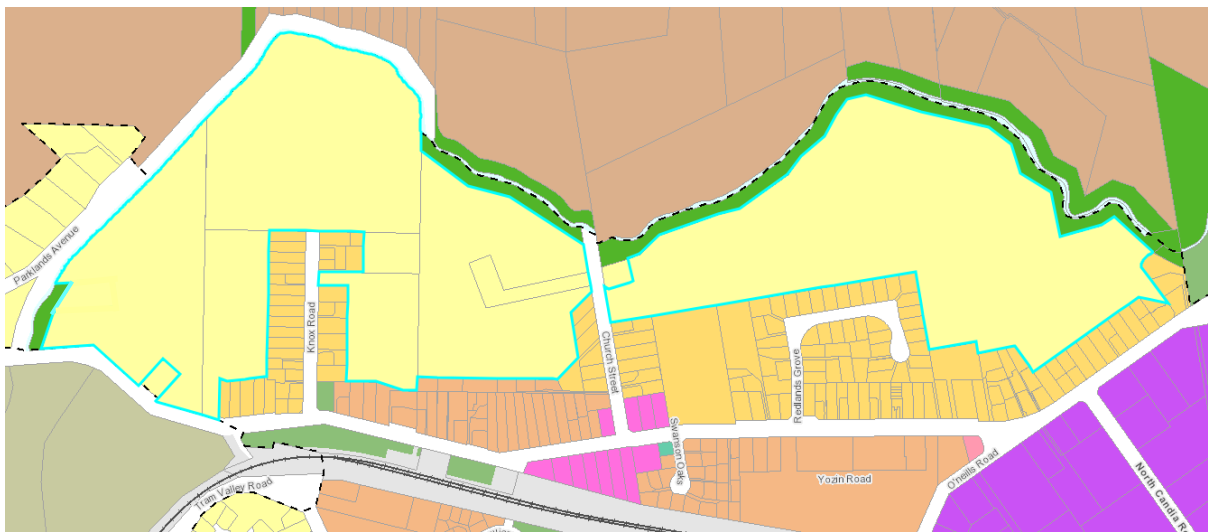


 Land subject to the plan change

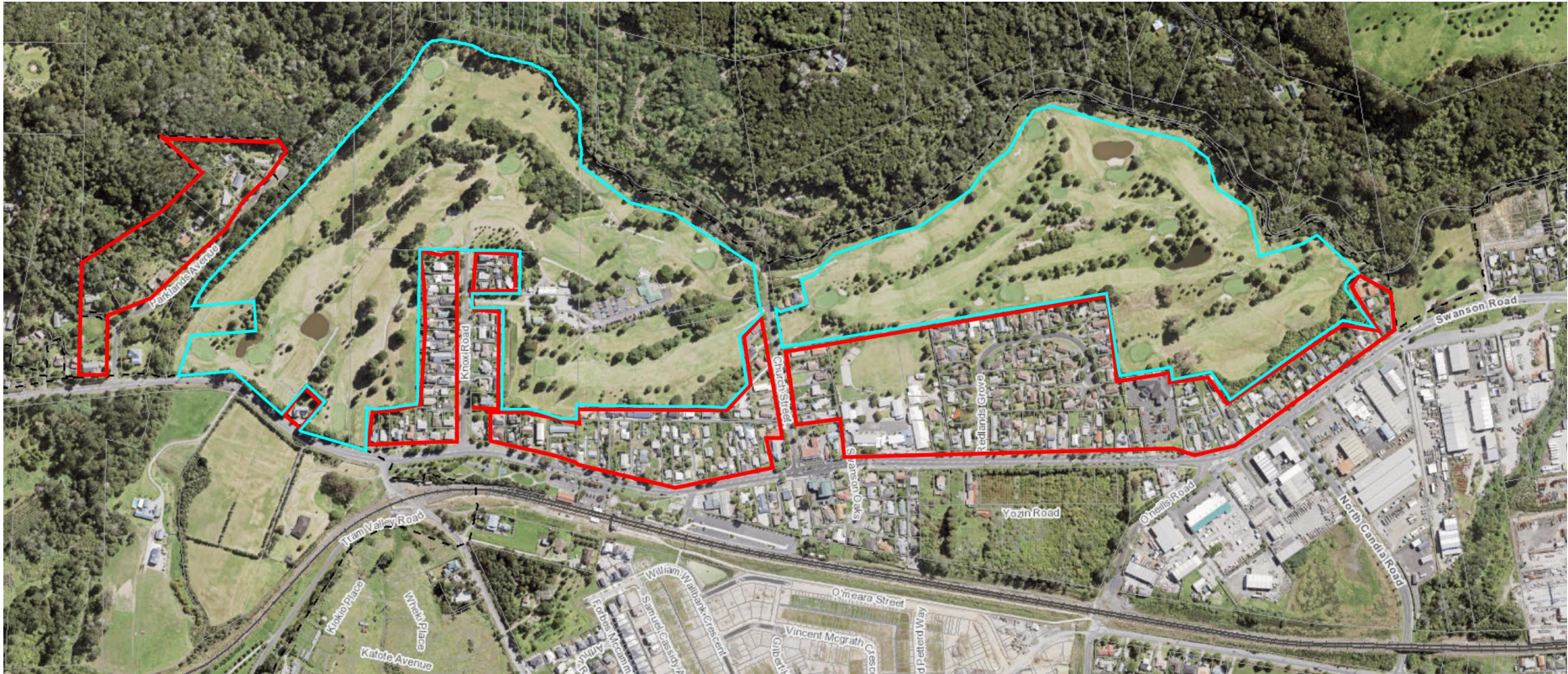
Figure 2: Existing zoning map

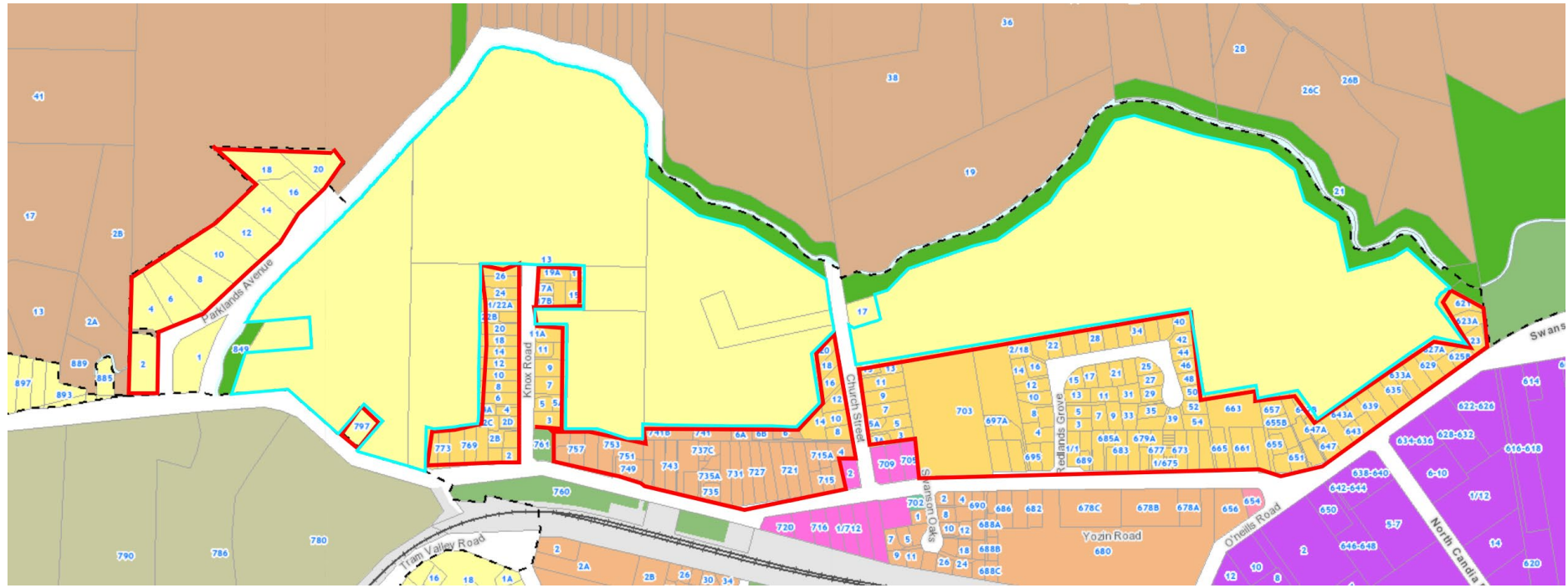


 Land subject to the plan change  
 Current Zone – Residential – Large Lot



Letters provided to all properties within the area marked in red









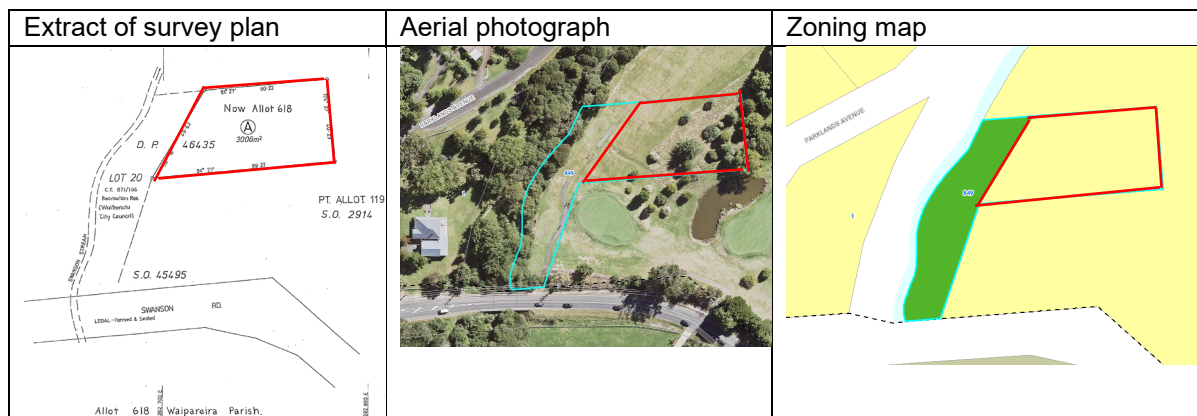
7 August 2023

Greg Presland  
 Chairperson  
 Waitākere Ranges Local Board  
[waitakererangeslocalboard@aucklandcouncil.govt.nz](mailto:waitakererangeslocalboard@aucklandcouncil.govt.nz)

Tēnā koe e Greg

**Private plan change – Redwood Park Golf Club**

1. Redwood Park Golf Club will soon make a private plan change request to Auckland Council to re-zone land uses for golfing purposes to from Residential – Large Lot to Open Space – Sport and Active Recreation.
2. The club is located at 13 Knox Road, Swanson, Auckland. Attachment 1 shows the golf course land and its current zoning.
3. The purpose of this letter is to advise of the proposed plan change and invite local board feedback in advance of the club making the plan change request.
4. Land the subject of the plan change is owned by the club, except for 3006m<sup>2</sup> forming part of 849 Swanson Road (Allot 618 SO 50169 Waipareira). The land **outlined in red** in the diagram below is owned by Auckland Council. Whilst owned by Auckland Council the land has been used by the club for golfing purposes since the early 1970's. Re-zoning this portion of land does not alter the landownership.



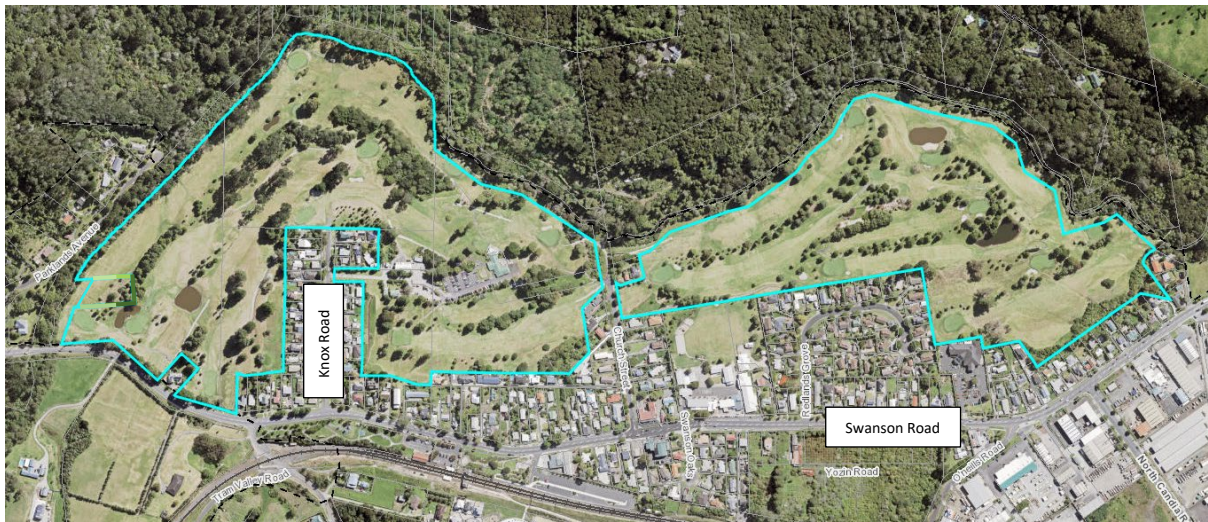
5. Only two golf courses in the Auckland Urban Area are not zoned Open Space – Sport and Active Recreation. This zone caters specifically for golfing facilities. The re-zoning will apply the correct zone to land. The plan change only relates to the zoning of the land and does not include any physical works.

6. Most of our members live in the area and value the convenience of a local golf course and the facilities it provides. The re-zoning simply matches the correct land zoning to the use of the land for playing golf and supports the future use of the land for this purpose.
  
7. Once the private plan change is lodged, the Chief Planning Office, Plans and Places team will contact the Waitākere Ranges Local Board for your views. In advance of this, the club is happy to answer any questions about the change request. Please do not hesitate to contact me.

Hennie Greeff  
Secretary Manager  
Redwood Park Golf Club Inc  
Phone: 09 833 1280  
Email: [manager@redwoodparkgolf.co.nz](mailto:manager@redwoodparkgolf.co.nz)

Attachment

Figure 1: Land subject to plan change




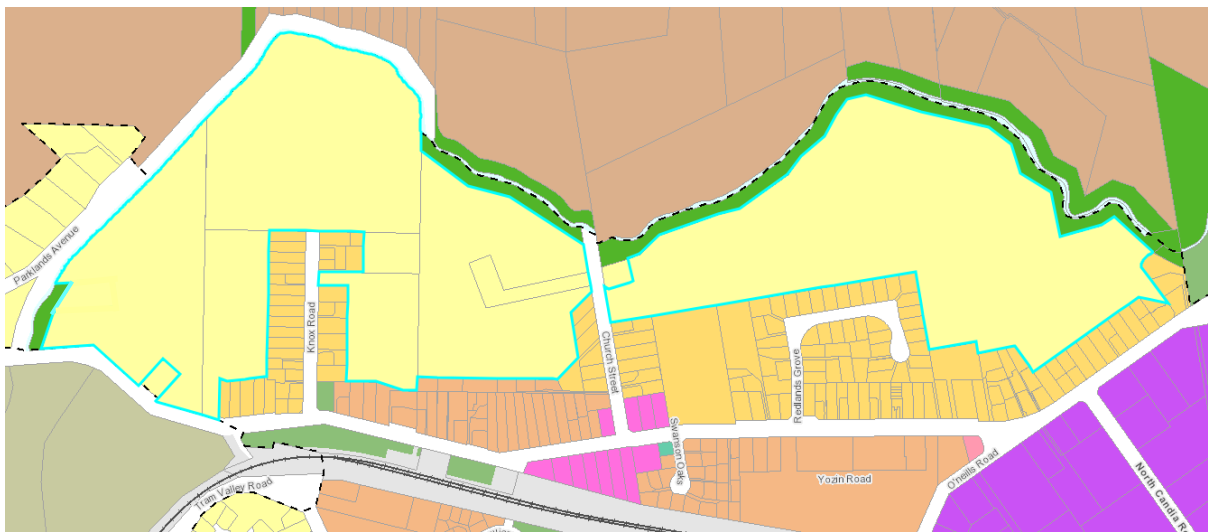


 Land subject to the plan change

Figure 2: Existing zoning map



 Land subject to the plan change  
 Current Zone – Residential – Large Lot



7 August 2023

<Auckland Council Mana Whenua email address list>

**Private plan change – Redwood Park Golf Club**

Tēnā koutou katoua

1. I write on behalf of Redwood Park Golf Club (**the club**). The club is located at 13 Knox Road, Swanson, Auckland (located off Swanson Road). Attachment 1 shows the golf course land and its current zoning.
2. To recognise and provide for existing and future use, the club is seeking to re-zone land currently used for golfing purposes from Residential – Large Lot to Open Space – Sport and Active Recreation through a private plan change process to the Auckland Unitary Plan.
3. The purpose of this letter is to advise of the proposed private plan change and invite Mana Whenua feedback in advance of the club making the plan change request to the Auckland Council.
4. Only two golf courses in the Auckland Urban Area are not zoned Open Space – Sport and Active Recreation. This zone caters specifically for golfing facilities. The re-zoning will apply the correct zone to land that has been a golf course since the early 1970's.
5. The plan change is to re-zone the land only. The private plan change does not include physical works. Any future works will be subject to Auckland Unitary Plan requirements.
6. Should you wish to know more or provide feedback on the re-zoning, please contact me on 027 681 7799 or [tania@richmondplanning.co.nz](mailto:tania@richmondplanning.co.nz). It would be of great assistance if you could respond by Monday 28<sup>th</sup> August 2023.

Nāku noa, nā



**Tania Richmond**  
**Director / Planning Consultant**

Attachment

Figure 1: Land subject to plan change




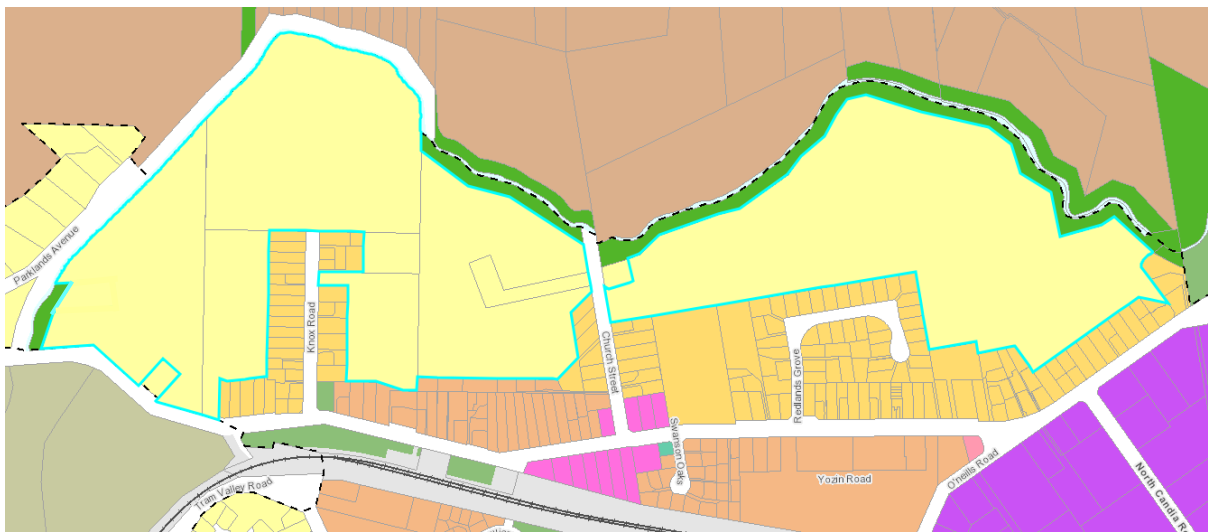


 Land subject to the plan change

Figure 2: Existing zoning map



 Land subject to the plan change  
 Current Zone – Residential – Large Lot