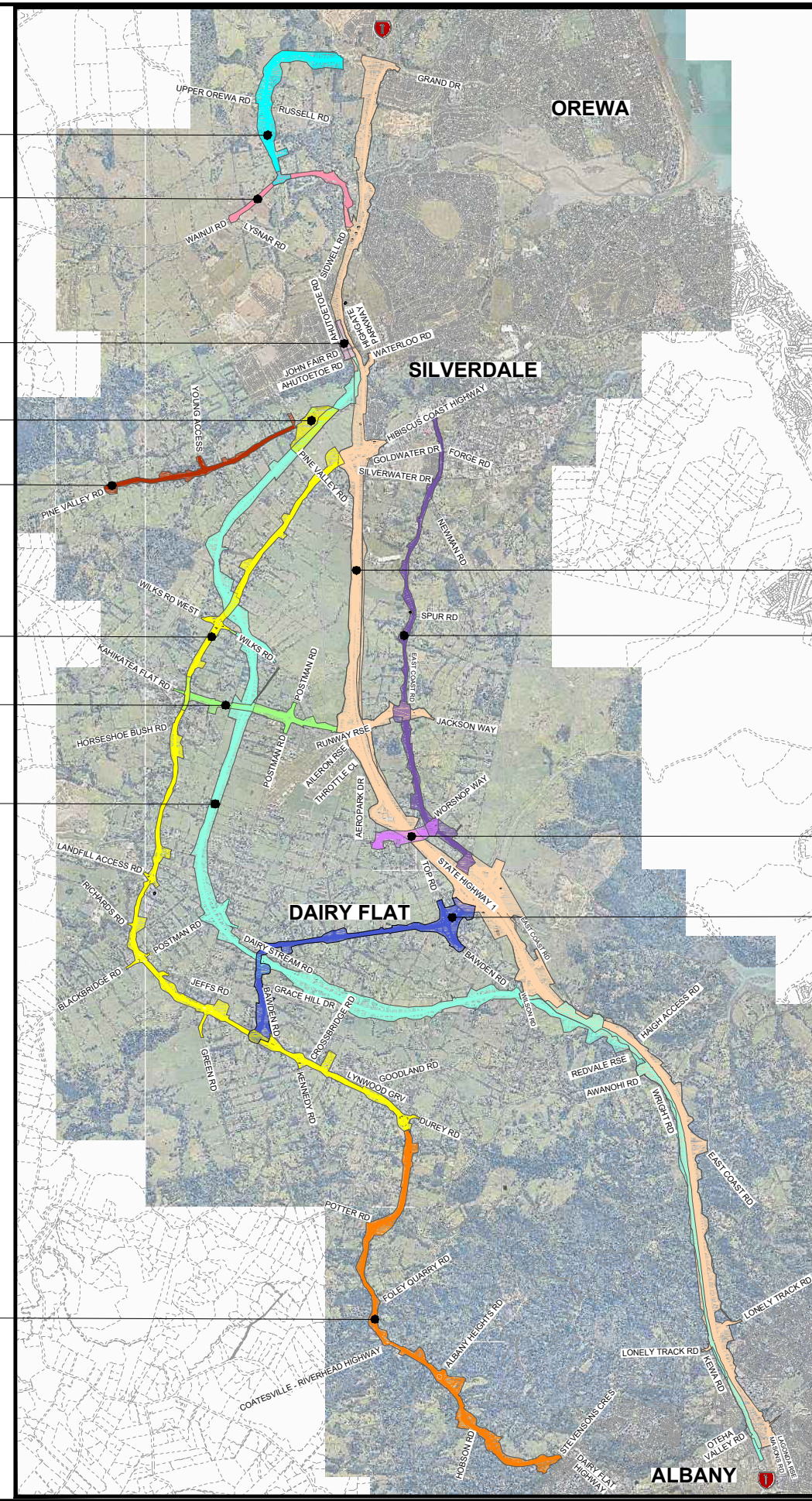


C:\pwworking\arcam\des\0_a\joseph.dela.torre@arcam.com\0417670\SGA-DRG-NTH-100-GE-0001.dwg

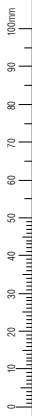


- NEW CONNECTION BETWEEN MILLDALE AND GRAND DRIVE (NoR 6)
REFER DRG-NTH-100-GE-1000
- UPGRADE TO WAINUI ROAD (NoR 10)
REFER DRG-NTH-100-GE-6000
- MILLDALE STATION (NoR 2)
REFER DRG-NTH-200-GE-2600
- PINE VALLEY EAST STATION (NoR 3)
REFER DRG-NTH-200-GE-2500
- UPGRADE TO PINE VALLEY ROAD (NoR 7)
REFER DRG-NTH-100-GE-7000
- UPGRADE TO DAIRY FLAT HIGHWAY BETWEEN SILVERDALE AND DAIRY FLAT (NoR 8)
REFER DRG-NTH-100-GE-5000 SERIES
- NEW CONNECTION BETWEEN DAIRY FLAT HIGHWAY AND WILKS ROAD (NoR 11)
REFER DRG-NTH-100-GE-3000
- RAPID TRANSIT CORRIDOR (NoR 1)
REFER DRG-NTH-200-GE-2000 SERIES
- DAIRY FLAT HIGHWAY UPGRADE - RURAL SECTION (DUREY RD - ALBANY) (NoR 9)
REFER DRG-NTH-100-GE-8000 SERIES

- STATE HIGHWAY 1 IMPROVEMENTS (NoR 4)
REFER DRG-NTH-200-GE-1000 SERIES
- EAST COAST ROAD UPGRADE (NoR 13)
REFER DRG-NTH-100-GE-2000 SERIES
- NEW SH1 CROSSING AT DAIRY STREAM (NoR 5)
REFER DRG-NTH-100-GE-9000
- UPGRADE AND EXTENSION TO BAWDEN ROAD (NoR 12)
REFER DRG-NTH-100-GE-4000



ORIGINAL SIZE A1



AERIAL IMAGERY SUPPLIED BY NEARMAP AUSTRALIA PTY LTD

NOT FOR CONSTRUCTION

REV	DATE	DESCRIPTION	APPROVED	DATE
C	JUL 2023	THIRD ISSUE FOR LODGEMENT OF NOTICE OF REQUIREMENT	JDT	
B	MAY 2023	SECOND ISSUE FOR SOFT LODGEMENT	JDT	
A	MAR 2023	FIRST ISSUE FOR AEE AND SME REVIEW	JDT	
		REVISIONS		

--	--	--

Project: **SUPPORTING GROWTH PROGRAMME NORTH**
 Drawing Title: **OVERALL LAYOUT PLAN AND COVER SHEET**

Drawing Status: LODGEMENT	
Drawing Date: 07.07.2023	
A1 Scales: NTS	A3 Scales: NTS
Discipline: GENERAL	
Drawing No: SGA-DRG-NTH-100-GE-0001	Revision: C