

OPERATION & MAINTENANCE MANUAL

AtlanFilter

(Formerly SPELFilter)



CONTENTS

Introduction..... 3

Features..... 4

Sizes..... 6

System Configuration.....7

Health and Safety..... 8

Maintenance frequency.....10

Maintenance Procedure.....11

General Cleaning.....12

Cartridge Recycling and Replacement13

Standard Drawings14

Site Exit and Clean Up16



INTRODUCTION

Understanding how to correctly and safely maintain the AtlanFilter (formerly SPELFilter) is essential for the preservation of the filter's condition and its operational effectiveness. The AtlanFilter is a highly engineered stormwater filtration device designed to remove sediments, heavy metals, nitrogen and phosphorus from stormwater runoff.

The filters can be housed in either a concrete or fibreglass structure that evenly distributes the flow between cartridges.

Flow through the filter cartridges is gravity driven and self-regulating, which makes the AtlanFilter system a low maintenance, high performance stormwater treatment device.

This guide will provide the necessary steps that are to be taken to correctly and efficiently ensure the life of the AtlanFilter product.

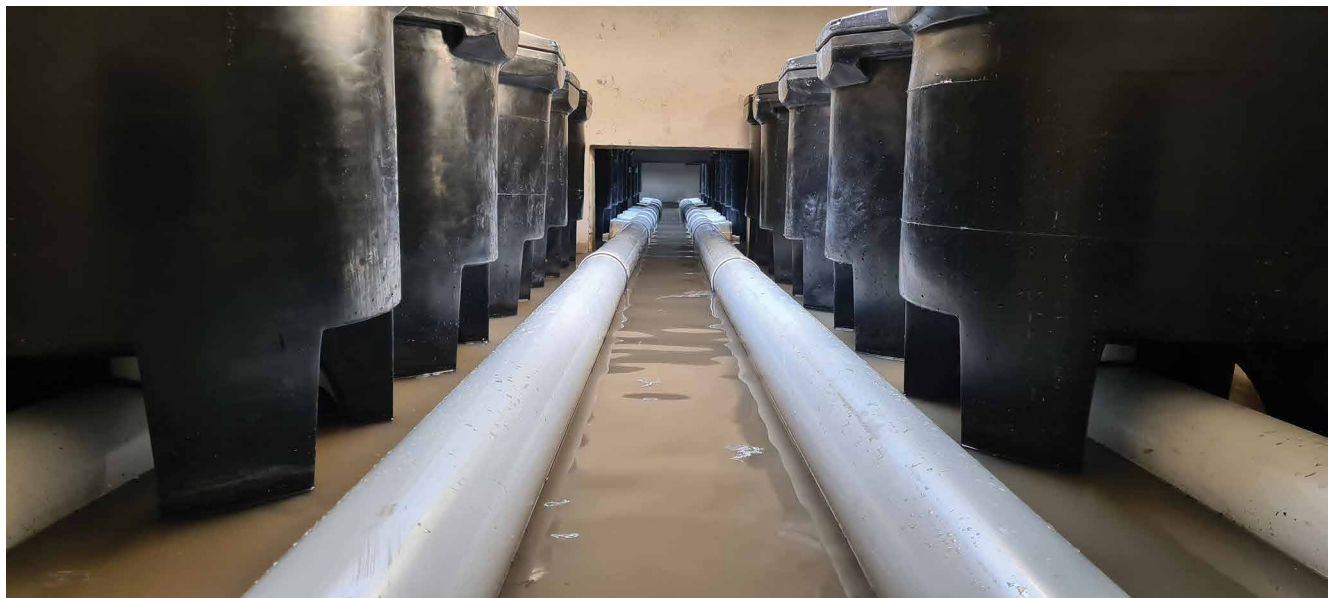


Figure 1 - AtlanFilters in a concrete chamber / vault

FEATURES

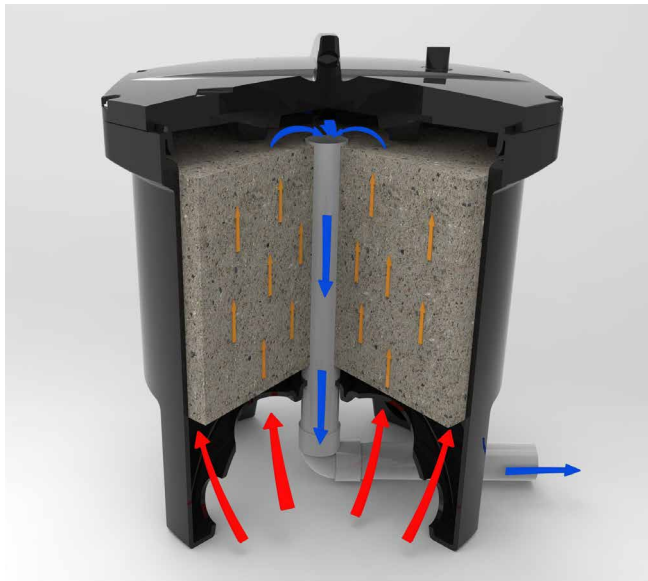


Figure 2 - Diagram of water flow through AtlanFilter

The AtlanFilter has a patented design that facilitates influent flow over the entire surface area of the media, providing consistent pollutant removal within a small footprint.

The AtlanFilter provides highly effective media filtration using gravity flow conditions, without the need for moving parts or floating valves. This eliminates the risk of mechanical failure, such as stuck valves and seizing components during its service life. This provides highly robust treatment performance.

Hydraulic head provided by a suitably sized weir in the filter vault forces stormwater through the filter media via the inlet ports underneath the filter cartridge.

Refer to the table below for minimum head required for the AtlanFilter cartridges to assist in sizing the weir.

The water to be treated enters the AtlanFilter cartridge via an upwards direction as the water level builds up around the AtlanFilter. This 'up flow' reduces the amount of sediment that could enter the media cartridge, as the sediment is allowed to drop to the vault floor under gravity. Any remaining sediment in the water is introduced through the filter media under hydraulic pressure and is filtered.

Water is filtered through the media, where dissolved and particulate Total Nitrogen and Total Phosphorus are removed via reaction with the media, in addition to the removal of Total Suspended Solids / sediment.

AtlanFilter Media Self-Backwash feature

A one-way air release valve located at the top of the filter cartridge allows air to escape as the cartridge fills up with water. This creates a siphonic flow condition as the air is completely evacuated from inside the AtlanFilter cartridge. Siphonic flow conditions are maintained until such time the water level outside of the cartridge falls beneath the inlet ports underneath the filter. At this moment, the water level inside the AtlanFilter cartridge is higher than the surrounding water level.

The water inside the AtlanFilter cartridge is then expelled upon the break of the siphon, and the water flows down and out of the inlet ports under gravity, onto the vault floor.

This is a highly effective backwash of the media and allows the expulsion of a high proportion of sediment out from the AtlanFilter media. The expelled sediment can be removed either manually or with a vacuum from the vault floor.

This backwash effect allows the media to remain highly conductive and is the key to the industry leading longevity of the AtlanFilter cartridge system, which does not need replacement for at least 5 years, and typically will achieve up to 6-8 years of service, subject to the AtlanFilter being regularly maintained in accordance with this guideline and in accordance with the specific needs of the catchment.



Figure 3 - Typical Outlet Weir Wall

FEATURES

Self Supporting Feet

Each AtlanFilter cartridge stands on 4 feet, which negates the need for the construction of a false floor in the vault. The feet are bolted to the vault floor with the supplied stainless steel angles and M10 bolts. The feet allow a clear height from the vault floor up to the inlet ports of 240mm. The absence of a false floor allows plenty of room for backwashed sediment to evacuate from underneath the cartridges and thereby avoid blocking the inlet ports to the AtlanFilter from sediment buildup. It is for this reason that Atlan recommended the sediment buildup not exceed 150mm above the vault floor, so as to avoid blocking the inlet ports of the AtlanFilter. Blockage of the inlet ports due to sediment accumulation in the vault floor will cause the AtlanFilter to go into bypass and be ineffective. Hence it is important to keep up to date with monitoring and maintaining the AtlanFilter vault.

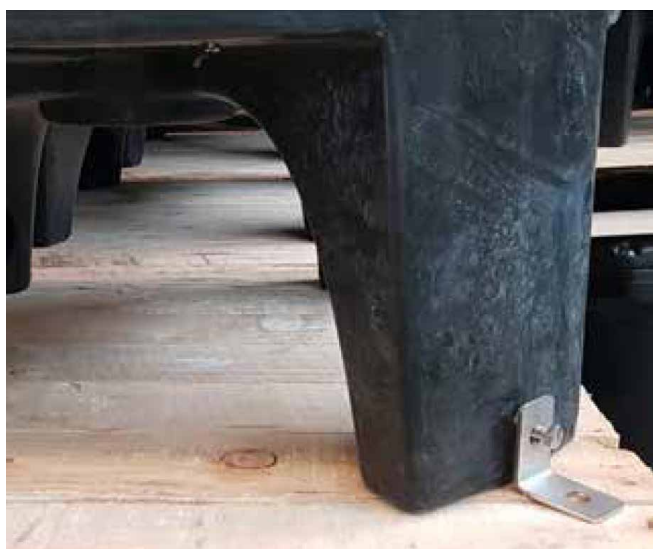


Figure 4 - Bolting the feet.



Figure 5 - Underside of the AtlanFilter showing the screened inlet ports and the connection for the outlet pipe in the middle.



Figure 6 - the top of the AtlanFilter showing the location of the one way air valve.

SIZES

Atlan Stormwater manufactures two height cartridges for varying site constraints as shown below. Each cartridge is designed to treat stormwater at a flow rate of 1.5 litres per second and 3.0 litres per second for the half height cartridge (model no. FIL-1.5) and full-height cartridge (model no. FIL-3.0) respectively.

	Full Height FIL-3.0	Half Height FIL-1.5
AtlanFilter total height	860mm	660mm
AtlanFilter Diameter	740mm	740mm
Minimum Head required	850mm	550mm
Treatment flow rate	3.0 L/s	1.5 L/s
Height of inlet ports above vault floor	250mm	250mm
Filtered water collection pipe diameter	50mm	50mm

AtlanFilter Full Height - FIL-3.0



AtlanFilter Half Height - FIL1.5



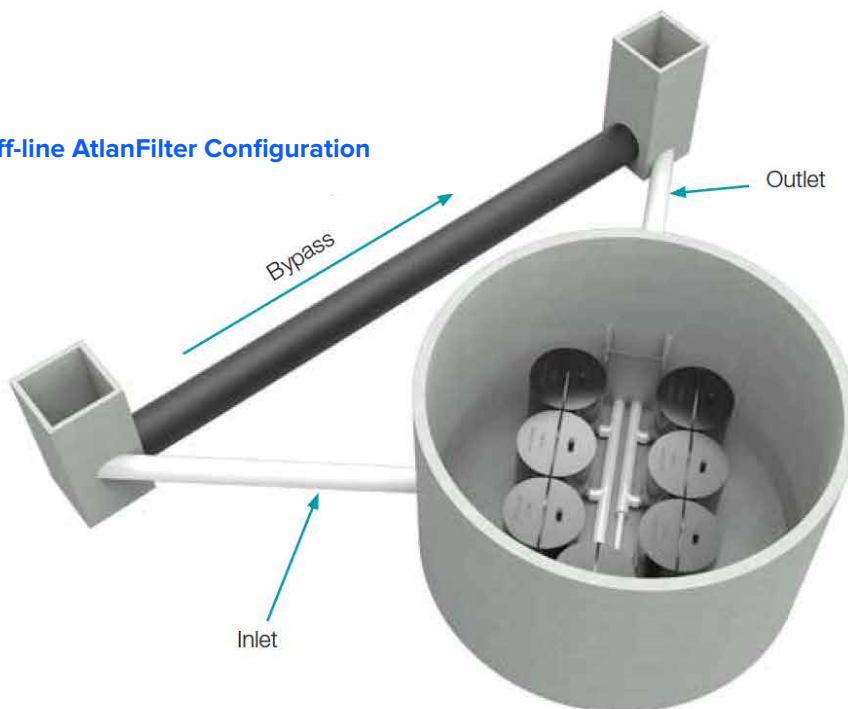
SYSTEM CONFIGURATION

AtlanFilter cartridges are installed in concrete or fibreglass tanks commonly referred to as 'vaults'. The vault selection and configuration are based on site characteristics and/or constraints; computational stormwater quality modelling; and selected AtlanFilter models. Typical AtlanFilter system configurations are shown below.

In-line AtlanFilter Configuration



Off-line AtlanFilter Configuration



HEALTH AND SAFETY

A. Personal health & safety

When carrying out the necessary installation operations of the AtlanFilter all contractors and staff personnel must comply with all current workplace health and safety legislation.

The below measures should be adhered to as practically as possible.

- Comply with all applicable laws, regulations and standards.
- All those involved are informed and understand their obligations in respect of the workplace health and safety legislation.
- Ensure responsibility is accepted by all employees to practice and promote a safe and healthy work environment.

B. Personal protective equipment/safety equipment

When carrying out the necessary installation operations of the AtlanFilter, wearing the appropriate personal protective equipment and utilising the adequate safety equipment is vital to reducing potential hazards.

Personal protective equipment / safety equipment in this application includes:

- Eye protection
- Safety apron
- Fluorescent safety vest
- Form of skin protection
- Puncture resistant gloves
- Steel capped safety boots
- Ear muffs
- Hard hat/s
- Sunscreen

C. Confined space

In the event access is required into the vault, confined space permits will be required which is not covered in this Guide. Typical equipment required for confined space entry include:

- Harness
- Gas detector
- Tripod
- Spotter

D. Traffic Control

It is not uncommon for Atlan Filter cartridges to be installed underneath trafficable areas. Minimum traffic control measures will need to be put in place in accordance with traffic control plans set out by respective local and state road authorities.



Vaults are to be treated as confined space.

Entry by permit only.



Monitor weather conditions prior to operation maintenance. Do not enter a vault during an episode of heavy rain as this can create a risk of drowning.



MAINTENANCE FREQUENCY

The AtlanFilter's design allows for a greater life span when frequently maintenance. Maintenance is broken up into three categories which include:

- Standard inspection
- General cleaning
- Cartridge replacement.

Standard Inspection

Standard inspections are conducted at regular four month intervals. At this time, an approved trained maintenance officer or Atlan representative shall undertake all measures outlined in Maintenance Procedure, Standard Inspection.

General Cleaning

At the end of each standard inspection, trigger measures will identify if general cleaning is required.

General cleaning will need to be executed immediate during standard inspections if the follow triggers are satisfied:

- Build-up of debris/pollutants within the vault greater than 150mm;
- Accumulation of debris/pollutants on the outlet chamber of the AtlanFilter vault;
- After large storm events, tidal or flooding impacts at the request of the owner;

Cartridge Replacement

Stormwater treatment is dependent on the effectiveness of the AtlanFilter cartridge system. As the AtlanFilter ages, pollutants will inundate the cartridge and ultimately reduce the treatment flow rate. At this point, a AtlanFilter flow test apparatus will be utilities to determine if replacement cartridges are required.

Based on the [site] concept modelling (MUSIC) and previous industry experience, we estimate the life of the AtlanFilter to be between 6 - 8 years. As a minimum requirement, each AtlanFilter cartridge should be replaced within 10 years.

The life cycle of the AtlanFilter can be impacted if standard inspections and general maintenance is not undertaken in accordance with this operation and maintenance Guide.

Other factors that will affect the above life cycle of the AtlanFilter include:

- Installation of cartridge system during construction phase and impacted by construction sediment loads;
- Neglecting to install pre-treatment using an industry approved GPT or a surface inlet pit trash bag such as the Atlan StormSack.
- Unforeseen environmental hazards affecting the AtlanFilter functionality.

MAINTENANCE PROCEDURES

Stormwater pollutants captured and retained by the AtlanFilter system need to be periodically removed to ensure environmental values are upheld. All associated maintenance works is heavily dependent on the site's operational activities and generated stormwater pollutants. To ensure the longevity of the installed AtlanFilter treatment system, it is imperative that the procedures detailed in this Guide are followed and all appropriate measures are actioned immediately.

Standard inspection

The standard inspection requires personal experience of Atlan products to visual inspection the vault and filter conditions.

Confined space requirements may not be required if a full inspection and assessment of each AtlanFilter can be achieved at surface level without being deemed a confined space entry.

The standard inspection requires personal experience of Atlan products to visual inspection the vault and filter conditions.

Confined space requirements may not be required if a full inspection and assessment of each AtlanFilter can be achieved at surface level without being deemed a confined space entry.

Site Inspection Procedures

1. Implement pre-start safety measures

Ensure that the area in which operational works are to be carried out is cordoned off, to prevent unauthorised access. Adequate safety barriers must be erected.

Area in which work is to be carried out must be clean, safe and hazard free. (Refer to figure 4.)

2. Set-up gantry tripod above manhole

Assemble and position the gantry above the manhole safely and as practically as possible. Attach the winch or chain block to the gantry for lifting the Atlan Filters.

Perform safety procedures ie. Attach harnesses etc. (if confined space).

3. Open manhole lid

Once you have set up the Gantry and ensured that the area is safe to operate in, you can proceed to open the manhole lid, using lid lifters.

4. Conduct gas tests

(If tank is classed confined space)

Once the lids have been removed to a safe distance to prevent tripping, you must then proceed to conduct gas tests. Perform necessary gas tests according to the confined space regulations.

5. Once confined space has been deemed safe to operate in, enter tank safely

Once you have carried out the required gas test and the work area is deemed safe, you may then enter the pit via a ladder or winch system to assess the work area you will be operating in. Ensure all confined space

6. AtlanFilter system assessment

Perform a review of the AtlanFilter system using the AtlanFilter assessment report/checklist. Sign off and forward a copy of the report to property manager and Atlan representative.

7. Reinstate AtlanFilter system and disposal

At the completion of the site inspection, ensure the site is reinstated back to its initial state and all pollutants are removed from the site in line with pollutant disposal procedures.

8. Sign off and forward a copy of the report to property manager and Atlan representative

GENERAL CLEANING

Vacuum out of Filter tank, removal, and disposal of pollutants at the completion of a standard inspection, general cleaning may be deemed necessary immediately or scheduled for a future date. Steps undertaken for general cleaning should be in general accordance with the procedure outlined below but not limited.

1. Implement pre-start safety measures

Ensure that the area in which operational works are to be carried out is cordoned off, to prevent unauthorised access. Adequate safety barriers must be erected.

Area in which work is to be carried out must be clean, safe and hazard free. (Refer to figure 4.)

2. Set-up gantry tripod above manhole

Assemble and position the gantry above the manhole safely and as practically as possible. Attach the winch or chain block to the gantry for lifting the AtlanFilters.

Perform safety procedures ie. attach harnesses etc. (if confined space).

3. Open manhole lid

Once you have sent up the Gantry and ensured that the area is safe to operate in, you can proceed to open the manhole lid, using lid lifters.

4. Conduct gas tests

(If tank is classed confined space)

Once the lids have been removed to a safe distance to prevent tripping, you must then proceed to conduct gas tests. Perform necessary gas tests according to the confined space regulations.

5. Once confined space has been deemed safe to operate in, enter tank safely

Once you have carried out the required gas test and the work area is deemed safe, you may then enter the pit via a ladder or winch system to assess the work area you will be operating in. Ensure all confined space

6. AtlanFilter system assessment

Perform a review of the AtlanFilter system using the AtlanFilter assessment report/checklist.

7. Pollutant removal from tank

Perform clean-up using a licenced vacuum truck contractor or wet/dry vacuum, depending on level of sediment built up and/or tank size.

8. Reinstate AtlanFilter system and disposal

At the completion of the site inspection, ensure the site is reinstated back to its initial state and all pollutants are removed from the site in line with pollutant disposal procedures.

9. Sign off and forward a copy of the report to property manager and Atlan representative

CARTRIDGE RECYCLING AND REPLACEMENT

AtlanFilter cartridges can be swapped out for new cartridges. The spent AtlanFilter cartridges can be collected from site and sent to Atlan Stormwater's facilities, where the spent media will be removed from the cartridge in factory conditions and disposed of in accordance with environmental regulations.

The AtlanFilter cartridge will be recharged with new media, thereby recycling and repurposing the cartridge.

AtlanFilter replacement procedures may vary depending on the configuration of the AtlanFilters, the type of vault and engineers' specs. Replacement instructions for manhole AtlanFilter systems and precast vault AtlanFilter systems are contained in this section.

At the completion of a standard inspection, AtlanFilter replacement may be deemed necessary immediately or scheduled for a future date. Steps undertaken for cartridge replacement should be in general accordance with the procedure outlined below but not limited.

1. Implement pre-start safety measures

Ensure that the area in which operational works are to be carried out is cordoned off, to prevent unauthorised access. Adequate safety barriers must be erected.

Area in which work is to be carried out must be clean, safe and hazard free.

2. Set-up gantry tripod above manhole

Assemble and position the gantry above the manhole safely and as practically as possible. Attach the winch or chain block to the gantry for lifting the AtlanFilters.

Perform safety procedures ie. attach harnesses etc. (if confined space).

3. Open manhole lid

Once you have sent up the gantry and ensured that the area is safe to operate in, you can proceed to open the manhole lid, using lid lifters.

4. Conduct gas tests

(If tank is classed confined space)

Once the lids have been removed to a safe distance to prevent tripping, you must then proceed to conduct gas tests. Perform necessary gas tests according to the confined space regulations.

5. Once confined space has been deemed safe to operate in, enter tank safely

Once you have carried out the required gas test and the work area is deemed safe, you may then enter the pit via a ladder or winch system to assess the work area you will be operating in. Ensure all confined space procedures are followed.

6. Remove exhausted cartridges

Disconnect all internal pipe work from inside the vault. Unbolt anti-floatation measures and remove cartridges from the vault using Gantry Tripod method.

7. Pollutant removal

Using a wet/dry vacuum or sucker truck, suck out all the residual pollutant from the vault.

8. Install pipework and AtlanFilters

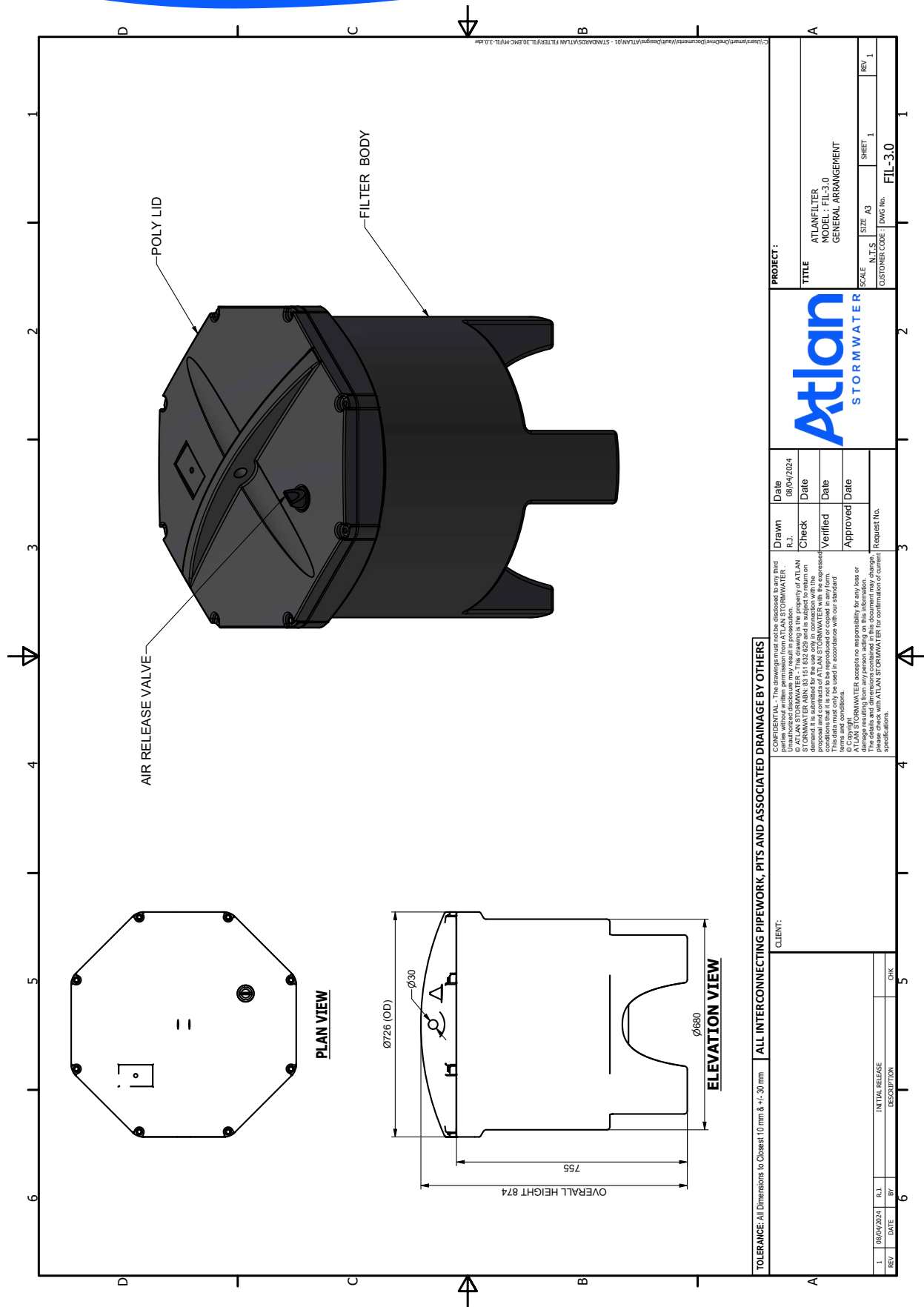
Please refer to the below standard install diagrams for the AtlanFilters. Then refer to your site specific drawings, as site requirements may require something different to the standard layout. Lower filters into tank, position into place, connect filter outlet pipework with the supplied fittings.

9. Install anti-floatation system

Please refer to the detailed drawings showing how the anti-floatation (anchor) bars are to be installed.

10. Sign off and forward a copy of the report to property manager and Atlan representative

Drawing Full Height



TOLERANCE: All Dimensions to Closest 10 mm & +/- 30 mm

ALL INTERCONNECTING PIPEWORK, PITS AND ASSOCIATED DRAINAGE BY OTHERS

CLIENT:

REV	DATE	BY	R.I.	INITIAL RELEASE	DESCRIPTION	CHK
1	08/04/2024					

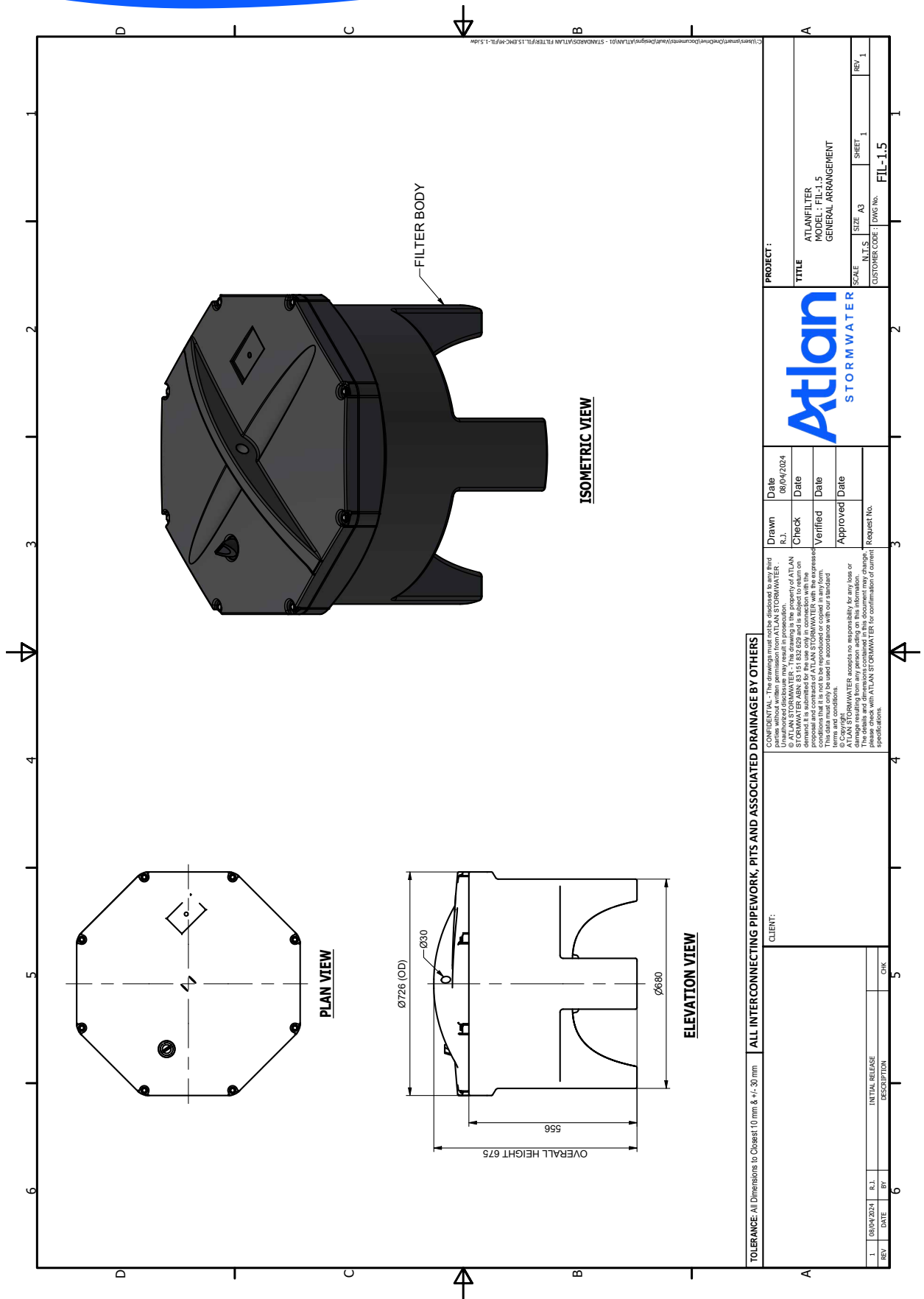
Drawn R.I.		Date 08/04/2024
Check		Date
Verified		Date
Approved		Date
Request No.		

CONFIDENTIAL - The drawings must not be disclosed to any third parties without written permission from ATLAN STORMWATER. It is the property of ATLAN STORMWATER. The drawing is the property of ATLAN STORMWATER ABM. 85151832 029 and is subject to return on request. The drawing is not to be reproduced or copied in any form, by any means, without the prior written consent of ATLAN STORMWATER. ATLAN STORMWATER accepts no responsibility for any loss or damage resulting from any person acting on the information contained in this drawing. For confirmation of current specifications, please check with ATLAN STORMWATER for confirmation of current specifications.

PROJECT:

TITLE		ATLAN FILTER
MODEL:		FIL-3.0
GENERAL ARRANGEMENT		
SCALE	SIZE	SHEET
N.T.S.	A3	1
CUSTOMER CODE		DWG No. FIL-3.0
REV		1

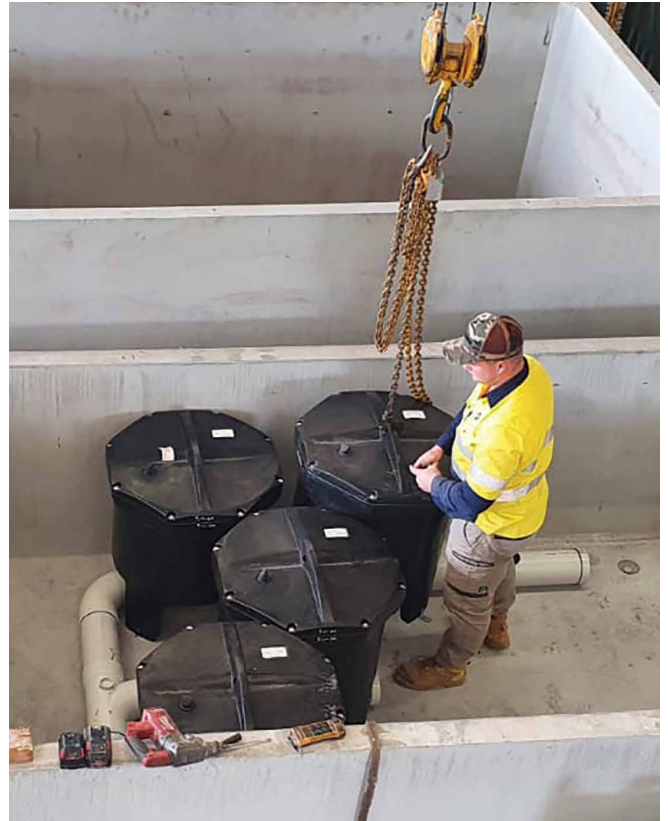
Drawing Half Height



SITE EXIT & CLEAN UP

At the end of the scheduled maintenance, approved contractors or Atlan maintenance crew are required to reinstate the site to pre-existing conditions. Steps included but limited to are:

- Ensure all access covers are securely inserted back into their frames;
- Remove and dispose collected pollutants from the site in accordance with local regulator authorities;
- Retrieve all traffic control measures and maintenance tools; and
- Return all exhausted and/or damaged Atlan products to Atlan Stormwater to begin recycling program.



Joy in water

'We believe clean waterways are a right not a privilege and we work to ensure a Joy in Water experience for you, with your children and grandchildren.'

Andy Hornbuckle



Atlan
STORMWATER

P 02 8705 0255
sales@atlan.com.au
100 Silverwater Rd,
Silverwater NSW 2128
atlan.com.au