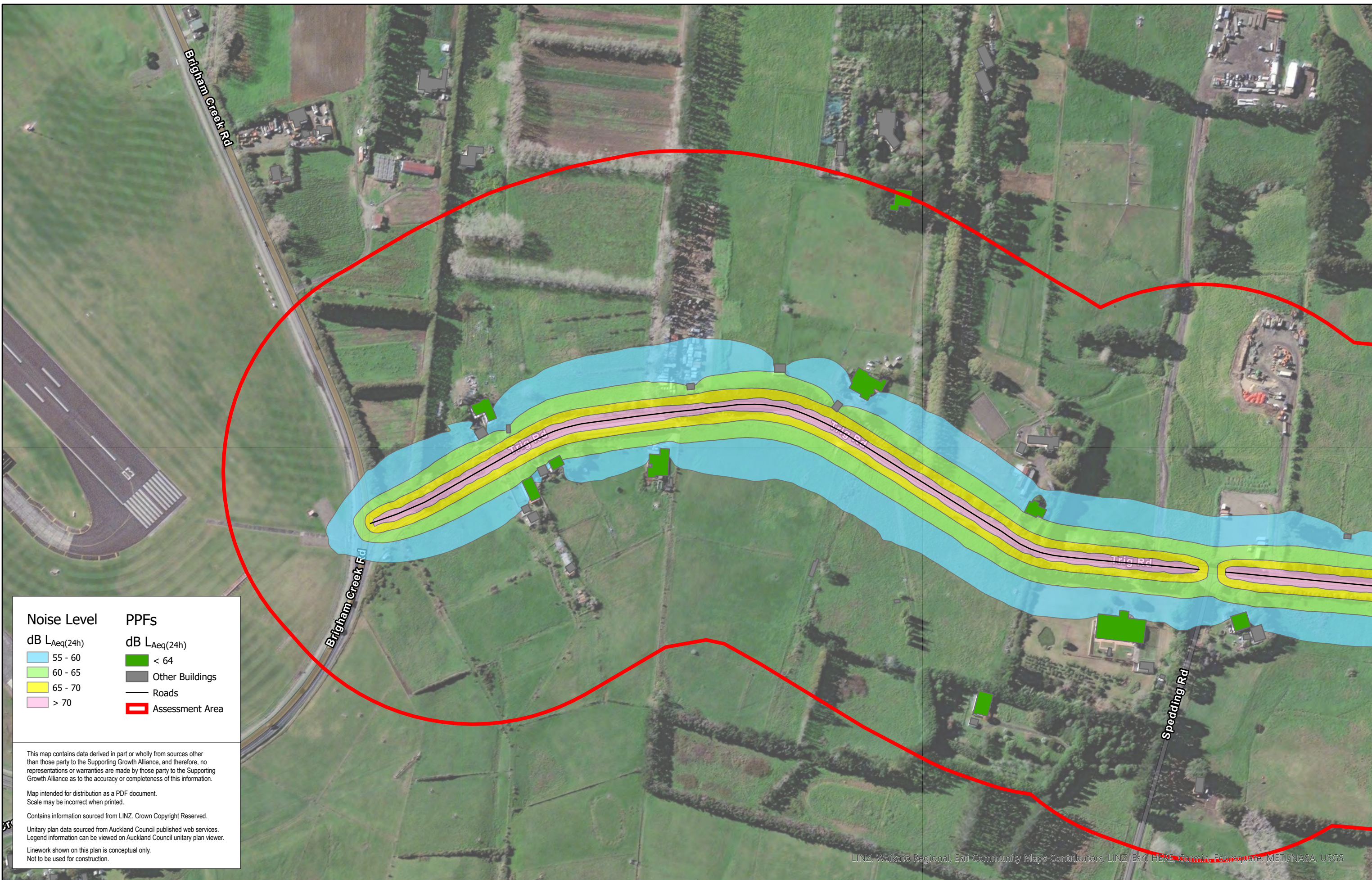


3 Appendix 3: Noise Contour Maps



Noise Level	PPFs
dB L _{Aeq} (24h)	dB L _{Aeq} (24h)
55 - 60	< 64
60 - 65	Other Buildings
65 - 70	Roads
> 70	Assessment Area

This map contains data derived in part or wholly from sources other than those party to the Supporting Growth Alliance, and therefore, no representations or warranties are made by those party to the Supporting Growth Alliance as to the accuracy or completeness of this information.

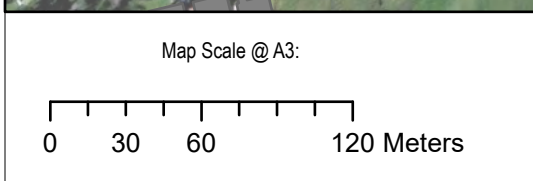
Map intended for distribution as a PDF document.
Scale may be incorrect when printed.

Contains information sourced from LINZ. Crown Copyright Reserved.

Unitary plan data sourced from Auckland Council published web services.
Legend information can be viewed on Auckland Council unitary plan viewer.

Linework shown on this plan is conceptual only.
Not to be used for construction.

LINZ, Waikato Regional, Esri Community Maps Contributors, LINZ, Esri, HERE, Garmin, FourSquare, METI/NASA, USGS



Revision	Author	Verified	Approved	Date	Title:
1	DA	SJ	CD	23/11/22	Supporting Growth NoR W1 - Existing Road Traffic Noise

Supporting Growth
NoR W1 - Existing Road Traffic Noise

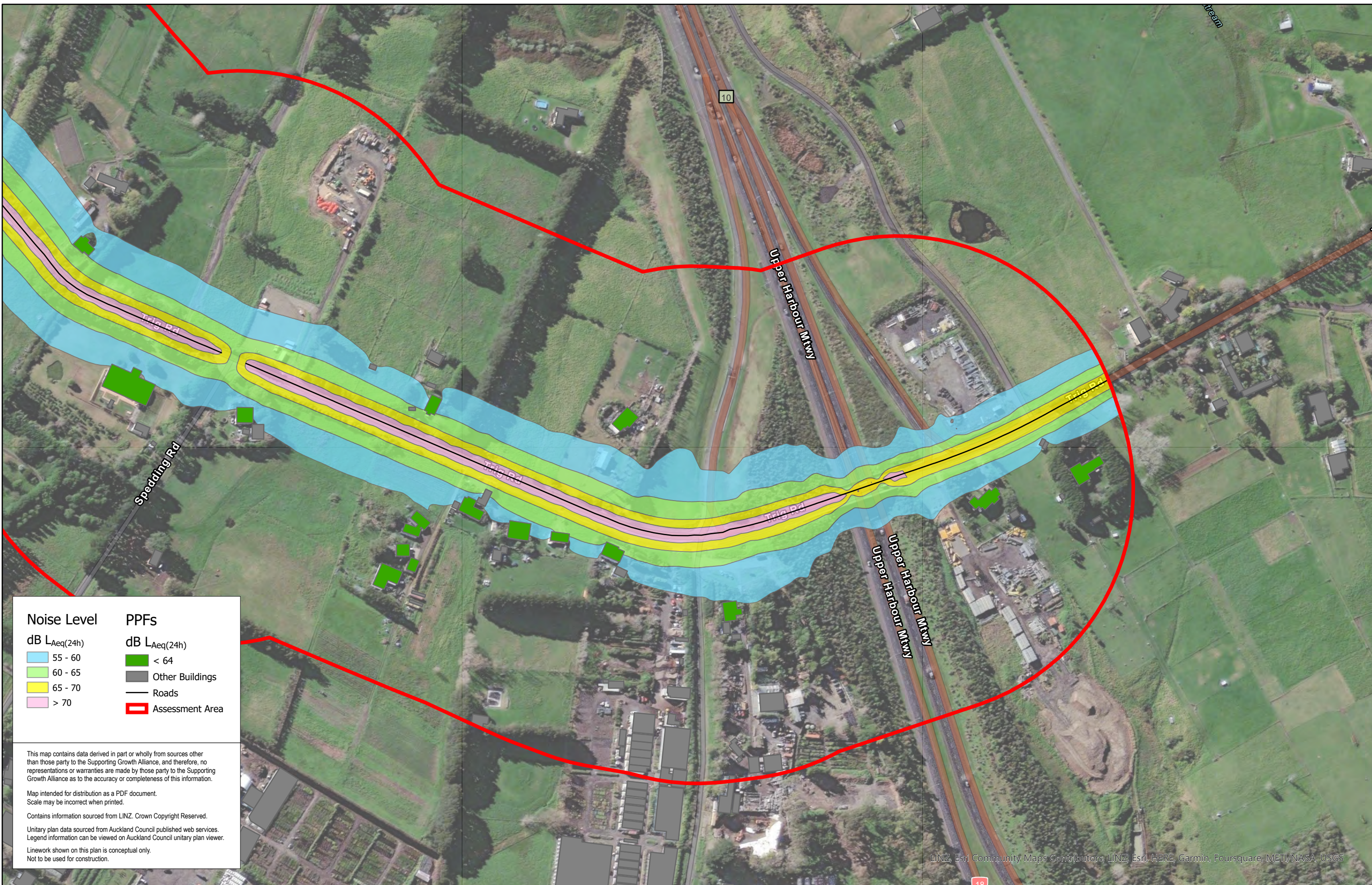
Client: Supporting Growth

Project: North West Package



Discipline: GIS

Drawing No: SGA-NOR-W1-000



Noise Level	PPFs
dB L _{Aeq} (24h)	dB L _{Aeq} (24h)
55 - 60	< 64
60 - 65	Other Buildings
65 - 70	Roads
> 70	Assessment Area

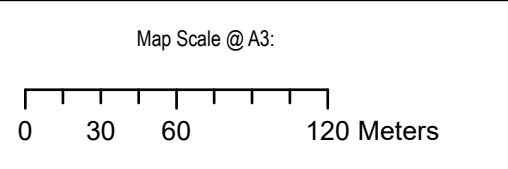
This map contains data derived in part or wholly from sources other than those party to the Supporting Growth Alliance, and therefore, no representations or warranties are made by those party to the Supporting Growth Alliance as to the accuracy or completeness of this information.

Map intended for distribution as a PDF document.
Scale may be incorrect when printed.

Contains information sourced from LINZ. Crown Copyright Reserved.

Unitary plan data sourced from Auckland Council published web services.
Legend information can be viewed on Auckland Council unitary plan viewer.

Linework shown on this plan is conceptual only.
Not to be used for construction.



Revision	Author	Verified	Approved	Date	Title:
1	DA	SJ	CD	23/11/22	Supporting Growth NoR W1 - Existing Road Traffic Noise

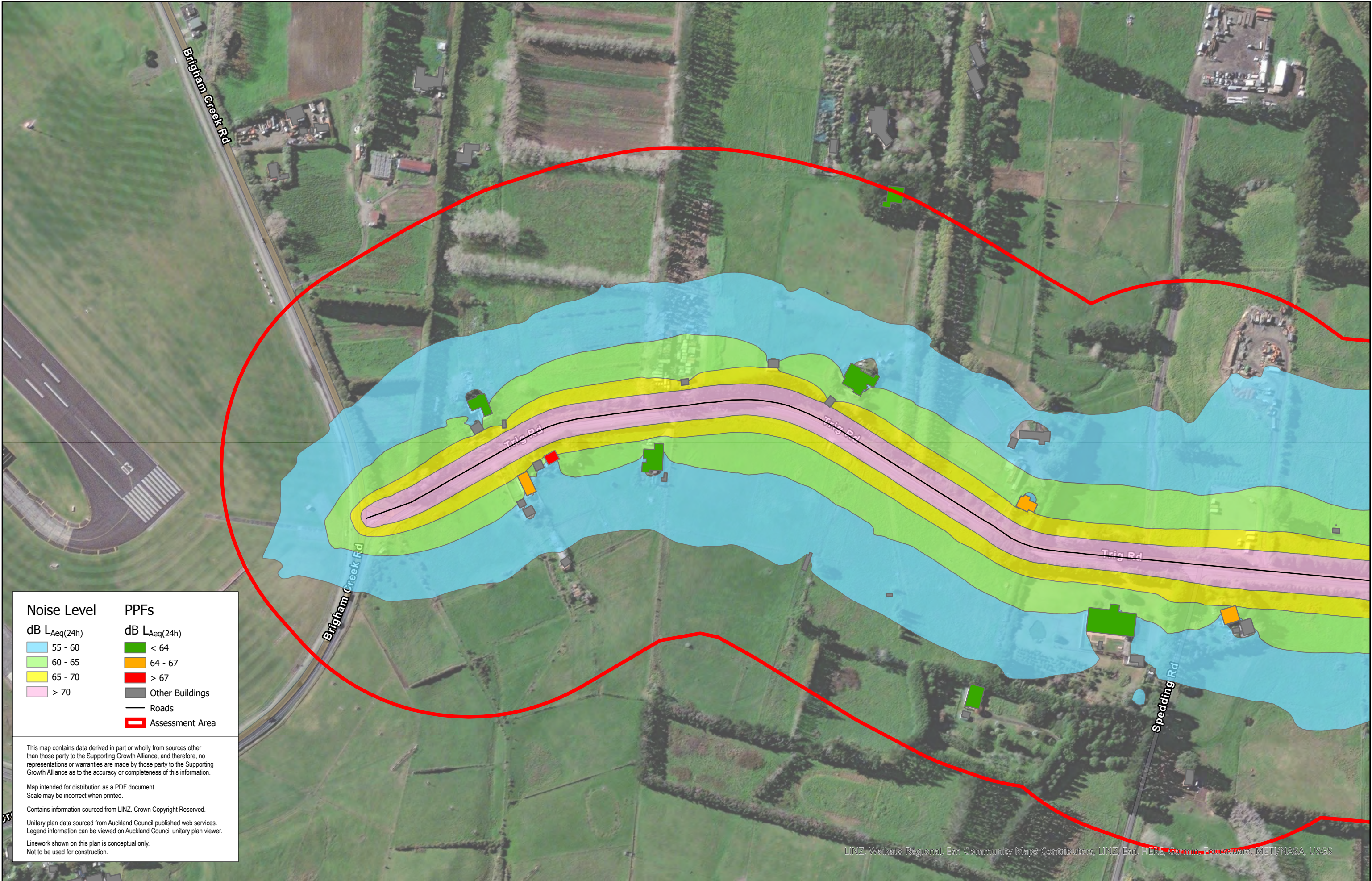
Client: Supporting Growth

Project: North West Package



Discipline: GIS

Drawing No: SGA-NOR-W1-000



Noise Level	PPFs
dB LAeq(24h)	dB LAeq(24h)
55 - 60	< 64
60 - 65	64 - 67
65 - 70	> 67
> 70	Other Buildings
	Roads
	Assessment Area

This map contains data derived in part or wholly from sources other than those party to the Supporting Growth Alliance, and therefore, no representations or warranties are made by those party to the Supporting Growth Alliance as to the accuracy or completeness of this information.

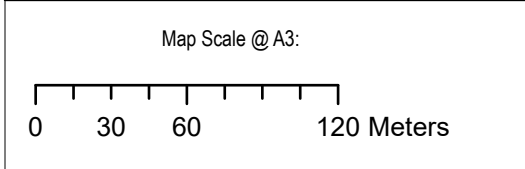
Map intended for distribution as a PDF document.
Scale may be incorrect when printed.

Contains information sourced from LINZ. Crown Copyright Reserved.

Unitary plan data sourced from Auckland Council published web services.
Legend information can be viewed on Auckland Council unitary plan viewer.

Linework shown on this plan is conceptual only.
Not to be used for construction.

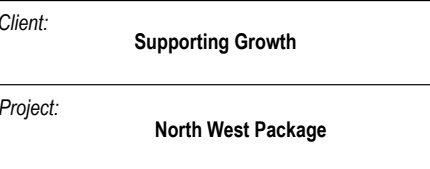
LINZ, Waikato Regional, Esri Community Maps Contributors, LINZ, Esri, HERE, Garmin, Louis Square, METI/NASA, USGS



Revision	Author	Verified	Approved	Date	Title:
1	DA	SJ	CD	23/11/22	Supporting Growth NoR W1 - Do Nothing Road Traffic Noise

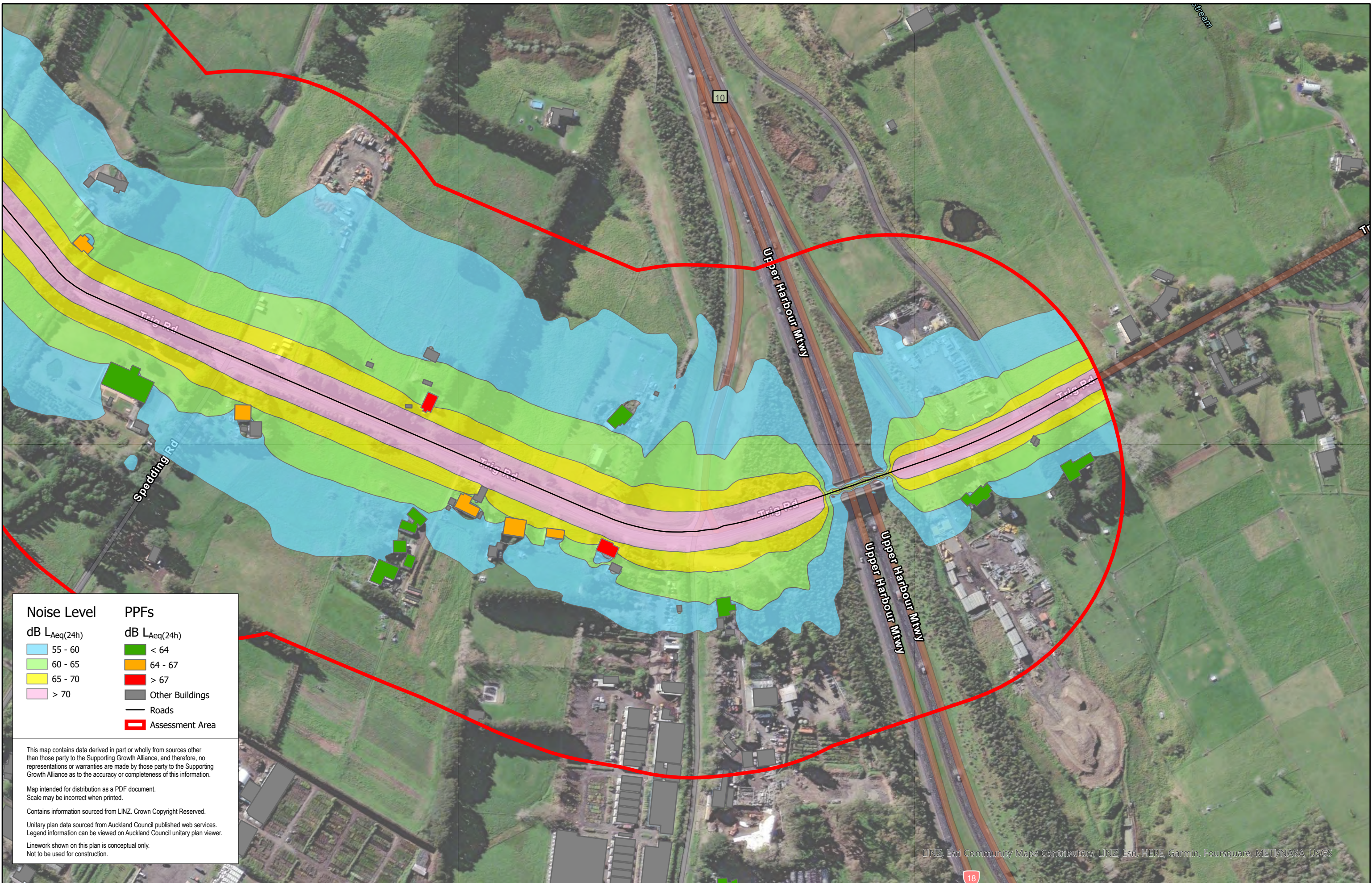
Client: Supporting Growth

Project: North West Package



Discipline: GIS

Drawing No: SGA-NOR-W1-000



Noise Level	PPFs
dB $L_{Aeq}(24h)$	dB $L_{Aeq}(24h)$
55 - 60	< 64
60 - 65	64 - 67
65 - 70	> 67
> 70	Other Buildings
	Roads
	Assessment Area

This map contains data derived in part or wholly from sources other than those party to the Supporting Growth Alliance, and therefore, no representations or warranties are made by those party to the Supporting Growth Alliance as to the accuracy or completeness of this information.

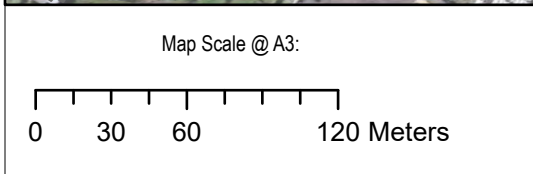
Map intended for distribution as a PDF document.
Scale may be incorrect when printed.

Contains information sourced from LINZ. Crown Copyright Reserved.

Unitary plan data sourced from Auckland Council published web services.
Legend information can be viewed on Auckland Council unitary plan viewer.

Linework shown on this plan is conceptual only.
Not to be used for construction.

LINZ, Esri, Community Maps Contributors, LINZ, Esri, HERE, Garmin, Foursquare, METI/NASA, USGS



Revision	Author	Verified	Approved	Date	Title:
1	DA	SJ	CD	23/11/22	Supporting Growth NoR W1 - Do Nothing Road Traffic Noise

Supporting Growth
NoR W1 - Do Nothing Road Traffic Noise

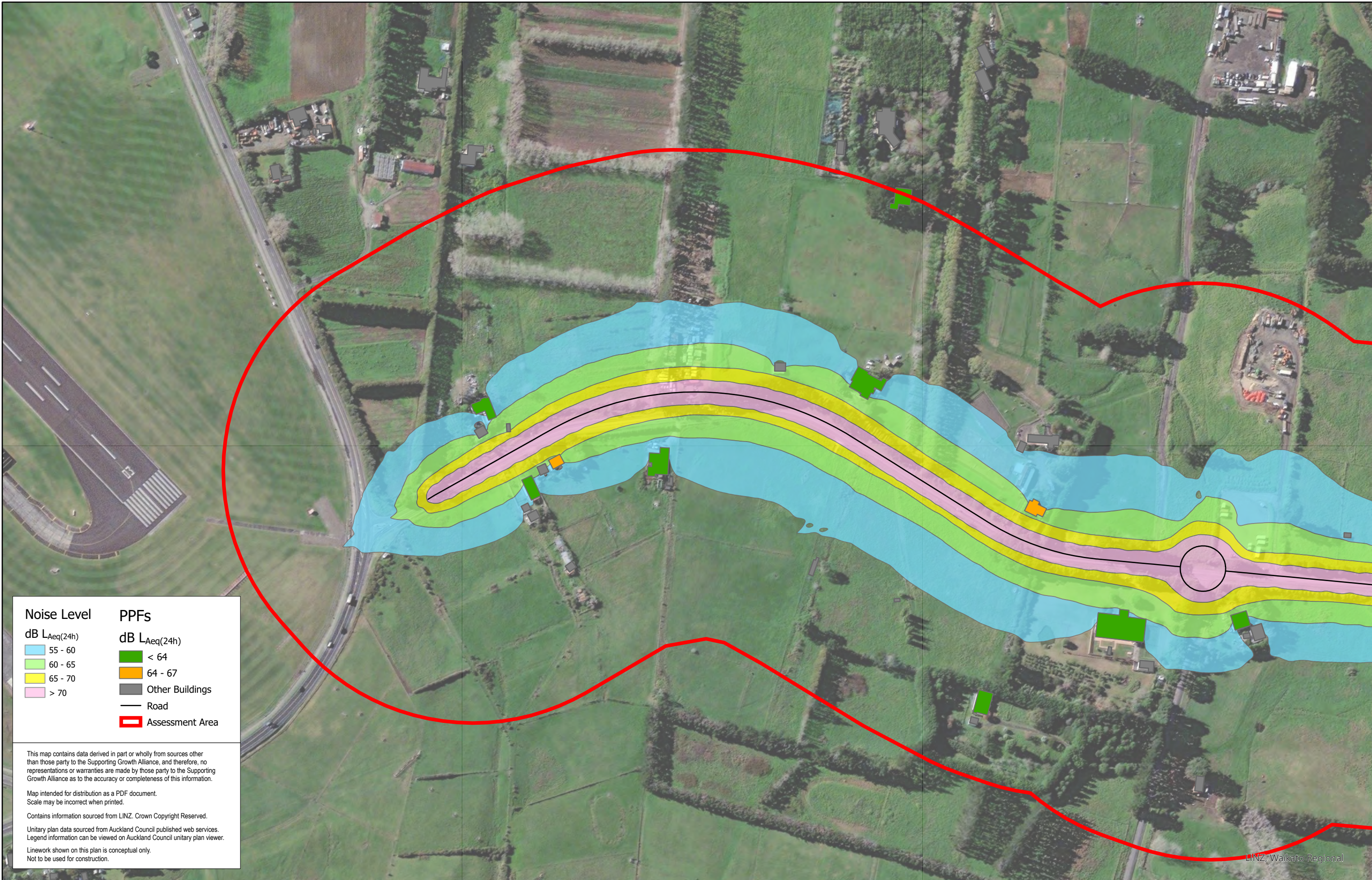
Client: Supporting Growth

Project: North West Package



Discipline: GIS

Drawing No: SGA-NOR-W1-000



Noise Level		PPFs	
dB LAeq(24h)		dB LAeq(24h)	
	55 - 60		< 64
	60 - 65		64 - 67
	65 - 70		Other Buildings
	> 70		Road
			Assessment Area

This map contains data derived in part or wholly from sources other than those party to the Supporting Growth Alliance, and therefore, no representations or warranties are made by those party to the Supporting Growth Alliance as to the accuracy or completeness of this information.

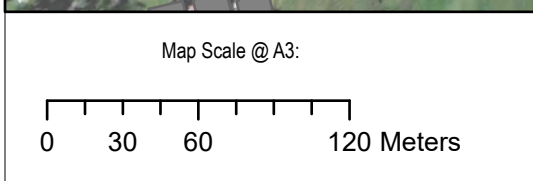
Map intended for distribution as a PDF document.
Scale may be incorrect when printed.

Contains information sourced from LINZ. Crown Copyright Reserved.

Unitary plan data sourced from Auckland Council published web services.
Legend information can be viewed on Auckland Council unitary plan viewer.

Linework shown on this plan is conceptual only.
Not to be used for construction.

LINZ, Waikato Regional



Revision	Author	Verified	Approved	Date	Title:
1	DA	SJ	CD	23/11/22	Supporting Growth NoR W1 - Do Minimum Road Traffic Noise

Supporting Growth
NoR W1 - Do Minimum Road Traffic Noise

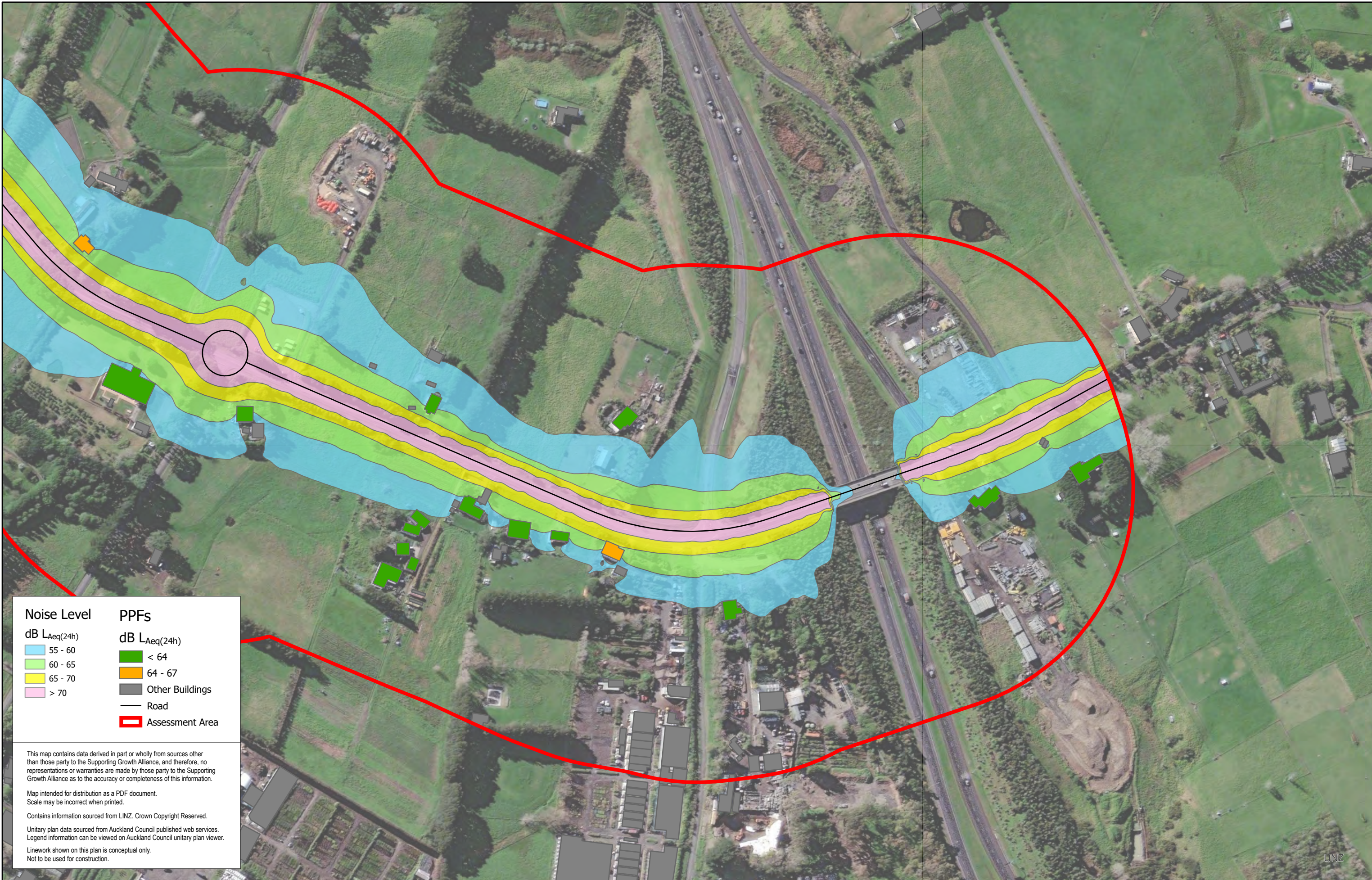
Client: Supporting Growth

Project: North West Package



Discipline: GIS

Drawing No: SGA-NOR-W1-000



Noise Level		PPFs	
dB $L_{Aeq}(24h)$		dB $L_{Aeq}(24h)$	
	55 - 60		< 64
	60 - 65		64 - 67
	65 - 70		Other Buildings
	> 70		Road
			Assessment Area

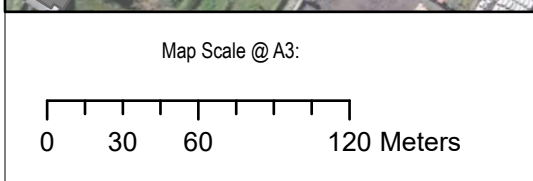
This map contains data derived in part or wholly from sources other than those party to the Supporting Growth Alliance, and therefore, no representations or warranties are made by those party to the Supporting Growth Alliance as to the accuracy or completeness of this information.

Map intended for distribution as a PDF document.
Scale may be incorrect when printed.

Contains information sourced from LINZ. Crown Copyright Reserved.

Unitary plan data sourced from Auckland Council published web services.
Legend information can be viewed on Auckland Council unitary plan viewer.

Linework shown on this plan is conceptual only.
Not to be used for construction.

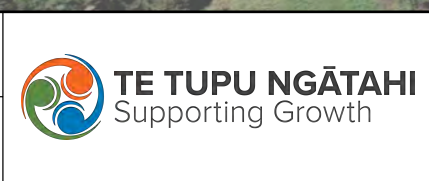


Revision	Author	Verified	Approved	Date	Title:
1	DA	SJ	CD	23/11/22	Supporting Growth NoR W1 - Do Minimum Road Traffic Noise

Supporting Growth
NoR W1 - Do Minimum Road Traffic Noise

Client: Supporting Growth

Project: North West Package



Discipline: GIS

Drawing No: SGA-NOR-W1-000



PPFs New		PPFs Altered	
dB $L_{Aeq(24h)}$		dB $L_{Aeq(24h)}$	
	< 57		< 64
Noise Level			64 - 67
dB $L_{Aeq(24h)}$			> 67
	55 - 60		Other Buildings
	60 - 65		Assessment Area
	65 - 70		Road
	> 70		

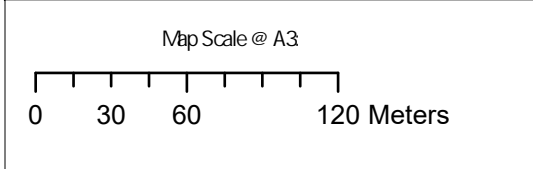
This map contains data derived in part or wholly from sources other than those party to the Supporting Growth Alliance, and therefore, no representations or warranties are made by those party to the Supporting Growth Alliance as to the accuracy or completeness of this information.

Map intended for distribution as a PDF document
Scale may be incorrect when printed.

Contains information sourced from LINZ. Crown Copyright Reserved.

Unitary plan data sourced from Auckland Council published web services.
Legend information can be viewed on Auckland Council unitary plan viewer.

Linework shown on this plan is conceptual only.
Not to be used for construction.



Revision	Author	Verified	Approved	Date	Title
1	Author	DRAFT	DRAFT	dd/mm/yyyy	

Supporting Growth
NoR W2 - Existing Road Traffic Noise

Client	Supporting Growth
Project	North West Package



Discipline:	GIS
Drawing No:	SGA-NOR-W1-000

Auckland Council, LINZ, Waikato Regional, Esri, Community Maps Contributors, LINZ, Esri, HERE, Garmin, Foursquare, METI/NASA, USGS



PPFs New	PPFs Altered
dB LAeq(24h)	dB LAeq(24h)
 < 57	 < 64
Noise Level	 Other Buildings
dB LAeq(24h)	 Assessment Area
 55 - 60	 Road
 60 - 65	
 65 - 70	
 > 70	

This map contains data derived in part or wholly from sources other than those party to the Supporting Growth Alliance, and therefore, no representations or warranties are made by those party to the Supporting Growth Alliance as to the accuracy or completeness of this information.

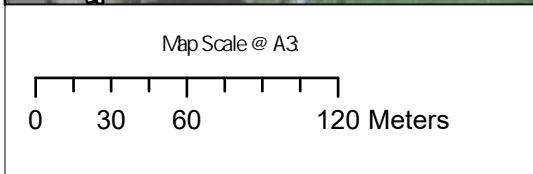
Map intended for distribution as a PDF document
Scale may be incorrect when printed.

Contains information sourced from LINZ. Crown Copyright Reserved.

Unitary plan data sourced from Auckland Council published web services.
Legend information can be viewed on Auckland Council unitary plan viewer.

Linework shown on this plan is conceptual only.
Not to be used for construction.

Auckland Council, LINZ, Waikato Regional, Esri Community Maps Contributors, LINZ, Esri, HERE, Garmin, Foursquare, METI/NASA, USGS



Revision	Author	Verified	Approved	Date	Title:
1	Author	DRAFT	DRAFT	dd/mm/yyyy	Supporting Growth NoR W2 - Existing Road Traffic Noise

Client: Supporting Growth

Project: North West Package

Discipline: GIS

Drawing No: SGA-NOR-W1-000





PPFs New	PPFs Altered
dB $L_{Aeq(24h)}$	dB $L_{Aeq(24h)}$
 < 57	 < 64
Noise Level	 Other Buildings
dB $L_{Aeq(24h)}$	 Assessment Area
 55 - 60	 Road
 60 - 65	
 65 - 70	
 > 70	

This map contains data derived in part or wholly from sources other than those party to the Supporting Growth Alliance, and therefore, no representations or warranties are made by those party to the Supporting Growth Alliance as to the accuracy or completeness of this information.

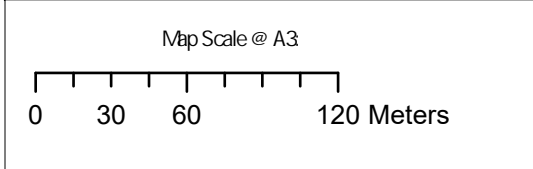
Map intended for distribution as a PDF document
Scale may be incorrect when printed.

Contains information sourced from LINZ. Crown Copyright Reserved.

Unitary plan data sourced from Auckland Council published web services.
Legend information can be viewed on Auckland Council unitary plan viewer.

Linework shown on this plan is conceptual only.
Not to be used for construction.

Auckland Council, LINZ, Waikato Regional, Esri Community Maps Contributors, LINZ, Esri, HERE, Garmin, Foursquare, METI/NASA, USGS



Revision	Author	Verified	Approved	Date	Title
1	Author	DRAFT	DRAFT	dd/mm/yyyy	

Supporting Growth
NoR W2 - Existing Road Traffic Noise

Client	Supporting Growth
Project	North West Package



Discipline:	GIS
Drawing No:	SGA-NOR-W1-000



PPFs New	PPFs Altered
dB $L_{Aeq(24h)}$	dB $L_{Aeq(24h)}$
 < 57	 < 64
Noise Level	 64 - 67
dB $L_{Aeq(24h)}$	 Other Buildings
 55 - 60	 Assessment Area
 60 - 65	 Road
 65 - 70	
 > 70	

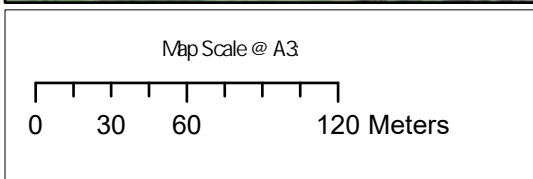
This map contains data derived in part or wholly from sources other than those party to the Supporting Growth Alliance, and therefore, no representations or warranties are made by those party to the Supporting Growth Alliance as to the accuracy or completeness of this information.

Map intended for distribution as a PDF document
Scale may be incorrect when printed.

Contains information sourced from LINZ. Crown Copyright Reserved.

Unitary plan data sourced from Auckland Council published web services.
Legend information can be viewed on Auckland Council unitary plan viewer.

Linework shown on this plan is conceptual only.
Not to be used for construction.



Revision	Author	Verified	Approved	Date	Title
1	Author	DRAFT	DRAFT	dd/mm/yyyy	

Supporting Growth
NoR W2 - Do Nothing Road Traffic Noise

Client	Supporting Growth
Project	North West Package



Discipline:	GIS
Drawing No:	SGA-NOR-W1-000



PPFs New	PPFs Altered
dB $L_{Aeq(24h)}$	dB $L_{Aeq(24h)}$
 < 57	 < 64
Noise Level	 Other Buildings
dB $L_{Aeq(24h)}$	 Assessment Area
 55 - 60	 Road
 60 - 65	
 65 - 70	
 > 70	

This map contains data derived in part or wholly from sources other than those party to the Supporting Growth Alliance, and therefore, no representations or warranties are made by those party to the Supporting Growth Alliance as to the accuracy or completeness of this information.

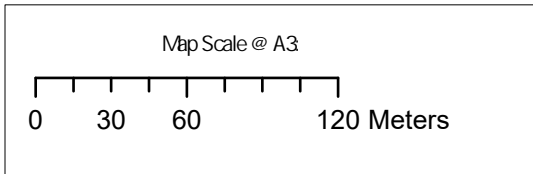
Map intended for distribution as a PDF document
Scale may be incorrect when printed.

Contains information sourced from LINZ. Crown Copyright Reserved.

Unitary plan data sourced from Auckland Council published web services.
Legend information can be viewed on Auckland Council unitary plan viewer.

Linework shown on this plan is conceptual only.
Not to be used for construction.

Auckland Council, LINZ, Waikato Regional, Esri Community Maps Contributors, LINZ, Esri, HERE, Garmin, Foursquare, METI/NASA, USGS



Revision	Author	Verified	Approved	Date
1	Author	DRAFT	DRAFT	dd/mm/yyyy

Title: **Supporting Growth**
NoR W2 - Do Nothing Road Traffic Noise

Client: Supporting Growth

Project: North West Package



Discipline: GIS

Drawing No: SGA-NOR-W1-000



PPFs New
dB L_{Aeq(24h)}
 < 57
 60 - 65
 65 - 70
 > 70

PPFs Altered
dB L_{Aeq(24h)}
 < 64
 Other Buildings
 Assessment Area
 Road

Noise Level
dB L_{Aeq(24h)}
 55 - 60
 60 - 65
 65 - 70
 > 70

This map contains data derived in part or wholly from sources other than those party to the Supporting Growth Alliance, and therefore, no representations or warranties are made by those party to the Supporting Growth Alliance as to the accuracy or completeness of this information.

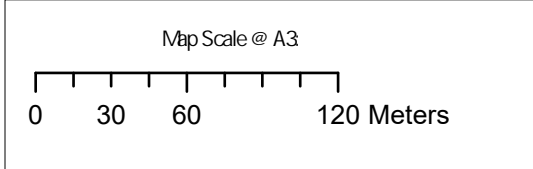
Map intended for distribution as a PDF document
Scale may be incorrect when printed.

Contains information sourced from LINZ. Crown Copyright Reserved.

Unitary plan data sourced from Auckland Council published web services.
Legend information can be viewed on Auckland Council unitary plan viewer.

Linework shown on this plan is conceptual only.
Not to be used for construction.

Auckland Council, LINZ, Waikato Regional, Esri Community Maps Contributors, LINZ, Esri, HERE, Garmin, Foursquare, METI/NASA, USGS



Revision	Author	Verified	Approved	Date
1	Author	DRAFT	DRAFT	dd/mm/yyyy

Title:
Supporting Growth
NoR W2 - Do Nothing Road Traffic Noise

Client: Supporting Growth
Project: North West Package



Discipline: GIS
Drawing No: SGA-NOR-W1-000