

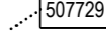



Designation Plan

Land to be Designated
New Pine Valley East Station
and Associated Facilities

Legend

-  Proposed Designation
-  Parcel Boundary
-  Property ID
-  Existing Designation

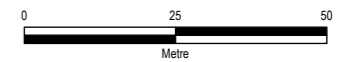


This map contains data derived in part or wholly from sources other than those party to the Supporting Growth Alliance, and therefore, no representations or warranties are made by those party to the Supporting Growth Alliance as to the accuracy or completeness of this information.

Map intended for distribution as a PDF document.
Scale may be incorrect when printed.

Contains information sourced from LINZ. Crown Copyright Reserved.

Map Scale @ A3: 1:1,250



Revision	Author	Verified	Approved	Date
1	BAP	RR9	KB	20/07/2023



Client: **Auckland Transport / Waka Kotahi**

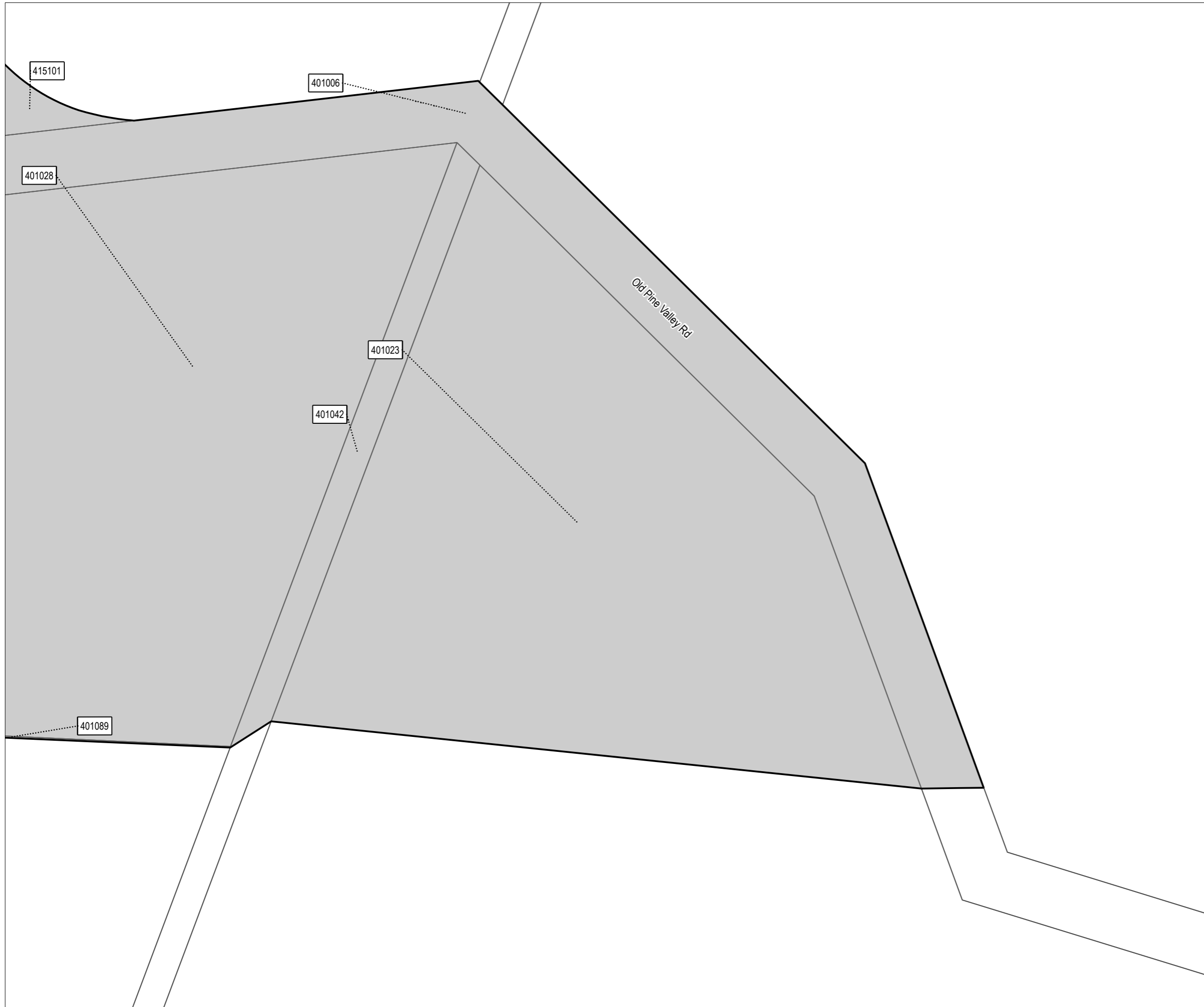
Discipline: **GIS**

Project: **North Projects**

Drawing No: **SGA-PA-N-001**
Sheet No : 1 of 2





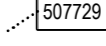

New Zealand Government

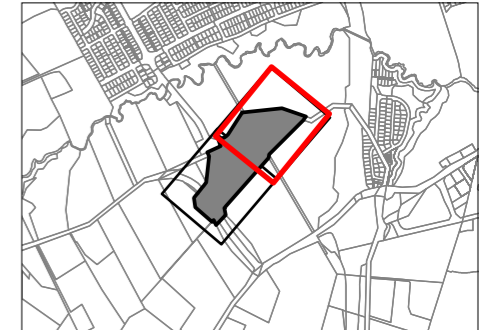


Designation Plan

Land to be Designated
New Pine Valley East Station
and Associated Facilities

Legend

-  Proposed Designation
-  Parcel Boundary
-  Property ID
-  Existing Designation

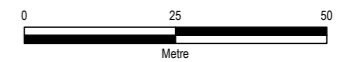


This map contains data derived in part or wholly from sources other than those party to the Supporting Growth Alliance, and therefore, no representations or warranties are made by those party to the Supporting Growth Alliance as to the accuracy or completeness of this information.

Map intended for distribution as a PDF document.
Scale may be incorrect when printed.

Contains information sourced from LINZ. Crown Copyright Reserved.

Map Scale @ A3: 1:1,250



Revision	Author	Verified	Approved	Date
1	BAP	RR9	KB	20/07/2023



Client: **Auckland Transport / Waka Kotahi**

Discipline: **GIS**

Project: **North Projects**

Drawing No: **SGA-PA-N-001**
Sheet No : 2 of 2



New Zealand Government