

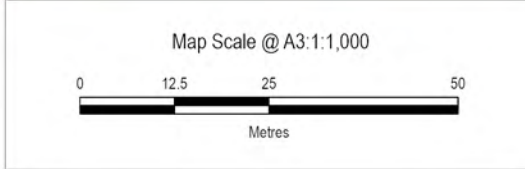
## Attachment B – Design Drawings





- Gravity Main Open Cut
- Gravity Main Trenchless
- Rising Main Open Cut
- Power
- Water
- Pump Station Design
- Pipeline Designation
- Parcel Boundaries
- Construction Yard
- Wetland Riparian
- Driveway
- Outfall
- Wetland

This map contains data derived in part or wholly from sources other than Beca, and therefore, no representations or warranties are made by Beca as to the accuracy or completeness of this information.  
 Map intended for distribution as a PDF document.  
 Scale may be incorrect when printed.  
 Data sourced from LINZ, Auckland Council. Contains Crown Copyright Data.  
 Crown Copyright Reserved.  
 Aerials images sourced from Auckland Council.



Revision	Author	Verified	Approved	Date
3	JS	TK	RC	19/09/2022
2	JS	BP	RC	16/08/2022
1	JS	BY	RC	16/08/2022

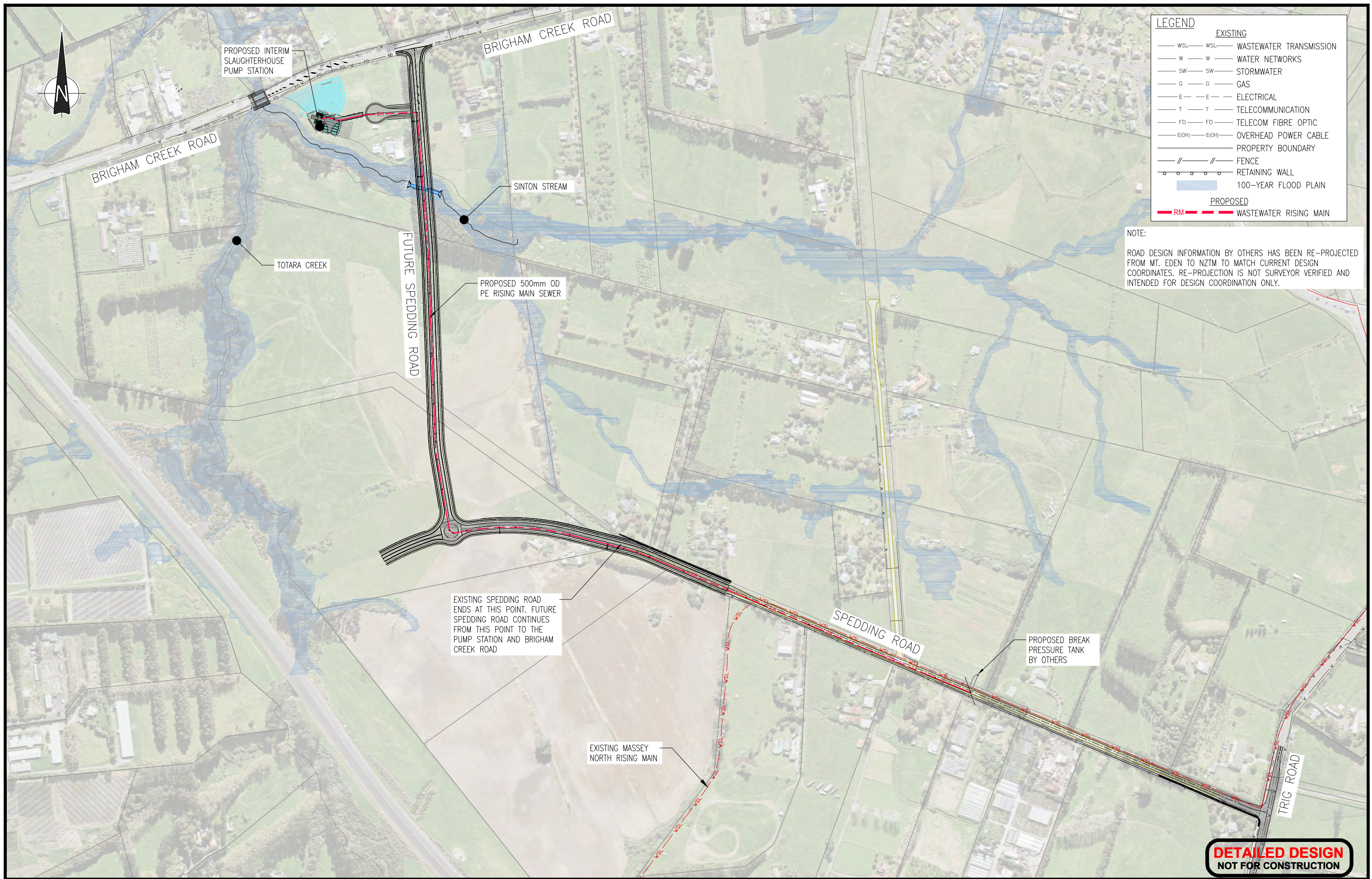
**Whenuapai Wastewater Servicing Scheme Phase 1**  
**Brigham Creek Road, Whenuapai**  
 Designation - Pump Station

Client: **Watercare**  
 Project: **Whenuapai WW Servicing Scheme**



Discipline: **GIS**  
 Drawing No: **GIS-4219201-2**





ISSUE	DATE	AMENDMENT	BY	APPD.	DESIGNED	BY	DATE
5	9-22	UPDATED RISING MAIN ROUTE ALIGNMENT	S.V.	P.H.	DES. APPROVED	P. HOUGHTON	9-22
4	4-22	RE-ISSUED FOR DETAILED DESIGN	J.C.	P.H.	DRAWN	S. WANG	9-22
3	12-21	ISSUED FOR DETAILED DESIGN	J.C.	P.H.	DWG. APPROVED	S. VASOL	9-22
2	8-21	RE-ISSUED FOR PRELIMINARY DESIGN	J.C.	P.H.	WSL DESIGN MGMT.	D. XIE	9-22
1	5-21	ISSUED FOR PRELIMINARY DESIGN	J.C.	P.H.	WSL PROJ. LEAD		

**Watercare**  
COPYRIGHT - This drawing, the design concept, remain the exclusive property of Watercare Services Limited and may not be used without approval. Copyright reserved.

WHENUAPAI-REDHILLS WASTEWATER SERVICING  
 BRIGHAM CREEK ROAD, WHENUAPAI  
 INTERIM SLAUGHTERHOUSE PS - WASTEWATER RISING MAIN - GENERAL LAYOUT



CAD FILE	2013654.004-016	DATE	09-09-22
ORIGINAL SCALE	A3 1:5000	CONTRACT No.	6484-6934
REF No.	12508391   3-AWD32		
DWG No.	2013654.004	ISSUE	5



**IMPORTANT SERVICES NOTE**

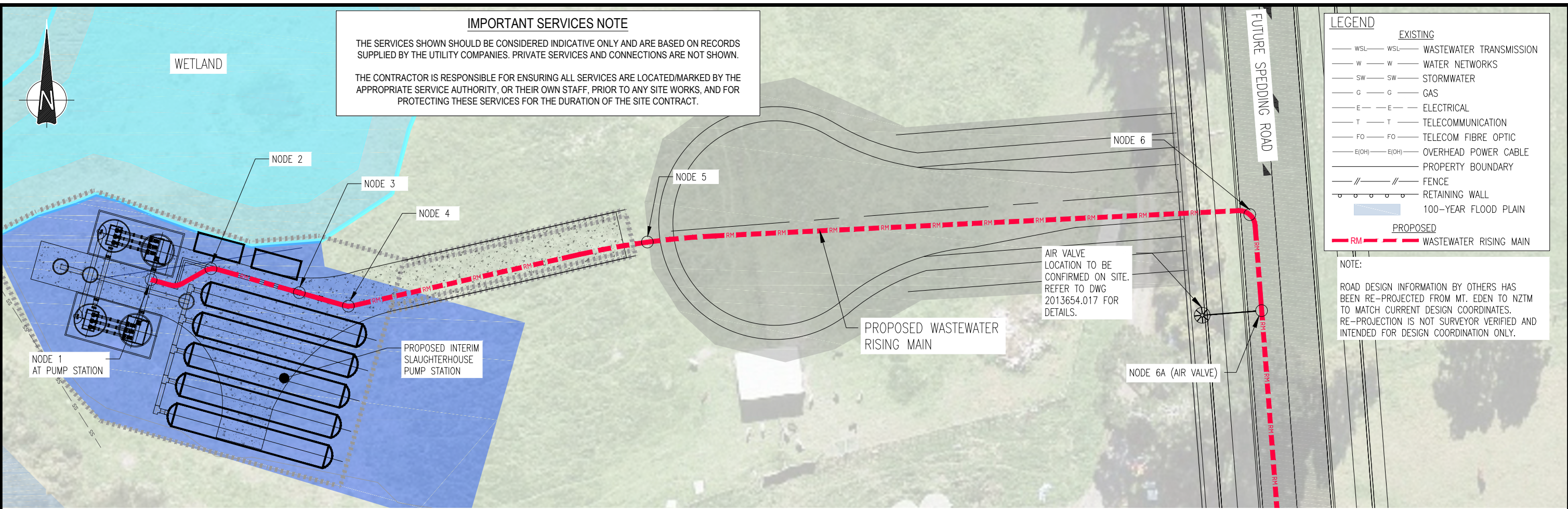
THE SERVICES SHOWN SHOULD BE CONSIDERED INDICATIVE ONLY AND ARE BASED ON RECORDS SUPPLIED BY THE UTILITY COMPANIES. PRIVATE SERVICES AND CONNECTIONS ARE NOT SHOWN.

THE CONTRACTOR IS RESPONSIBLE FOR ENSURING ALL SERVICES ARE LOCATED/MARKED BY THE APPROPRIATE SERVICE AUTHORITY, OR THEIR OWN STAFF, PRIOR TO ANY SITE WORKS, AND FOR PROTECTING THESE SERVICES FOR THE DURATION OF THE SITE CONTRACT.

**LEGEND**

EXISTING		
WSL	WSL	WASTEWATER TRANSMISSION
W	W	WATER NETWORKS
SW	SW	STORMWATER
G	G	GAS
E	E	ELECTRICAL
T	T	TELECOMMUNICATION
FO	FO	TELECOM FIBRE OPTIC
E(OH)	E(OH)	OVERHEAD POWER CABLE
---	---	PROPERTY BOUNDARY
		FENCE
---	---	RETAINING WALL
---	---	100-YEAR FLOOD PLAIN
PROPOSED		
RM	RM	WASTEWATER RISING MAIN

**NOTE:**  
ROAD DESIGN INFORMATION BY OTHERS HAS BEEN RE-PROJECTED FROM MT. EDEN TO NZTM TO MATCH CURRENT DESIGN COORDINATES. RE-PROJECTION IS NOT SURVEYOR VERIFIED AND INTENDED FOR DESIGN COORDINATION ONLY.



	NODE 1	NODE 2	NODE 3	NODE 4	NODE 5	NODE 6	NODE 6A
PIPE GRADE (%)			-4.3%	-4.3%		-1.0%	-1.0%
PIPE SLOPE (1 IN X)			-23.4	-23.4		-100.0	-100.0
PIPE SIZE (mm)			500 O.D.	500 O.D.		500 O.D.	500 O.D.
PIPE CLASS			PE100 PN12.5	PE100 PN12.5		PE100 PN12.5	PE100 PN12.5
DATUM R.L.	2.00						
DEPTH TO INVERT FROM DESIGN SURFACE						4.17	3.55
DEPTH TO INVERT FROM EXISTING SURFACE			2.10	1.99	3.34	4.42	4.12
INVERT LEVEL			7.69	7.97	9.63	10.40	10.53
DESIGN SURFACE LEVEL			9.79	9.96	12.97	14.58	14.07
EXISTING SURFACE LEVEL			9.79	9.96	12.97	14.83	14.65
CHAINAGE			19.89 6.50	26.38	38.93 65.32	76.91 142.23	12.45 154.68

**DETAILED DESIGN**  
NOT FOR CONSTRUCTION

ISSUE	DATE	AMENDMENT	BY	APPD.	DESIGNED	P. HOUGHTON	9-22
5	9-22	UPDATED RISING MAIN ROUTE ALIGNMENT	S.V.	P.H.	DES. APPROVED	S. WANG	9-22
4	4-22	RE-ISSUED FOR DETAILED DESIGN	J.C.	P.H.	DRAWN	S. VASOL	9-22
3	12-21	ISSUED FOR DETAILED DESIGN	J.C.	P.H.	DWG. APPROVED	D. XIE	9-22
2	8-21	RE-ISSUED FOR PRELIMINARY DESIGN	J.C.	P.H.	WSL DESIGN MGMT.		
1	5-21	ISSUED FOR PRELIMINARY DESIGN	J.C.	P.H.	WSL PROJ. LEAD		

**Watercare**  
COPYRIGHT - This drawing, the design concept, remain the exclusive property of Watercare Services Limited and may not be used without approval. Copyright reserved.

WHENUAPAI-REDHILLS WASTEWATER SERVICING  
BRIGHAM CREEK ROAD, WHENUAPAI  
INTERIM SLAUGHTERHOUSE PS - WASTEWATER RISING MAIN PLAN AND LONG SECTION - SHEET 1 OF 12



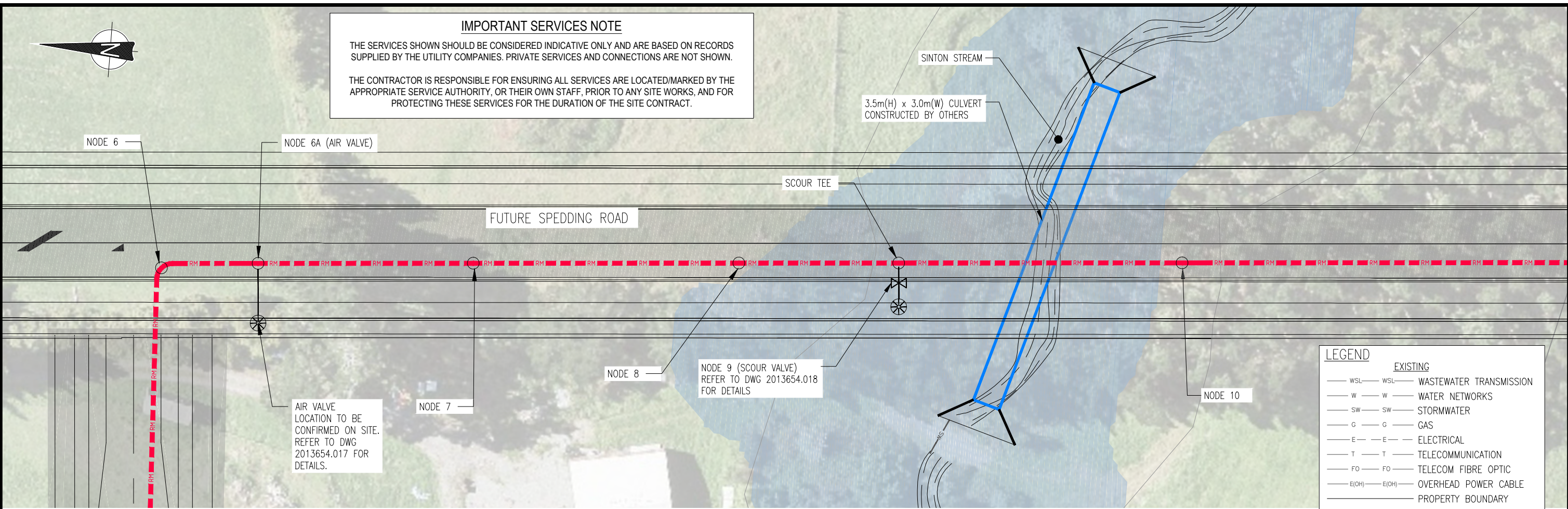
CAD FILE	2013654.004-016	DATE	09-09-22
ORIGINAL SCALE	A3 1:500	CONTRACT No.	6484-6934
REF No.	12508391   3-AWD32		
DWG No.	2013654.005	ISSUE	5



**IMPORTANT SERVICES NOTE**

THE SERVICES SHOWN SHOULD BE CONSIDERED INDICATIVE ONLY AND ARE BASED ON RECORDS SUPPLIED BY THE UTILITY COMPANIES. PRIVATE SERVICES AND CONNECTIONS ARE NOT SHOWN.

THE CONTRACTOR IS RESPONSIBLE FOR ENSURING ALL SERVICES ARE LOCATED/MARKED BY THE APPROPRIATE SERVICE AUTHORITY, OR THEIR OWN STAFF, PRIOR TO ANY SITE WORKS, AND FOR PROTECTING THESE SERVICES FOR THE DURATION OF THE SITE CONTRACT.

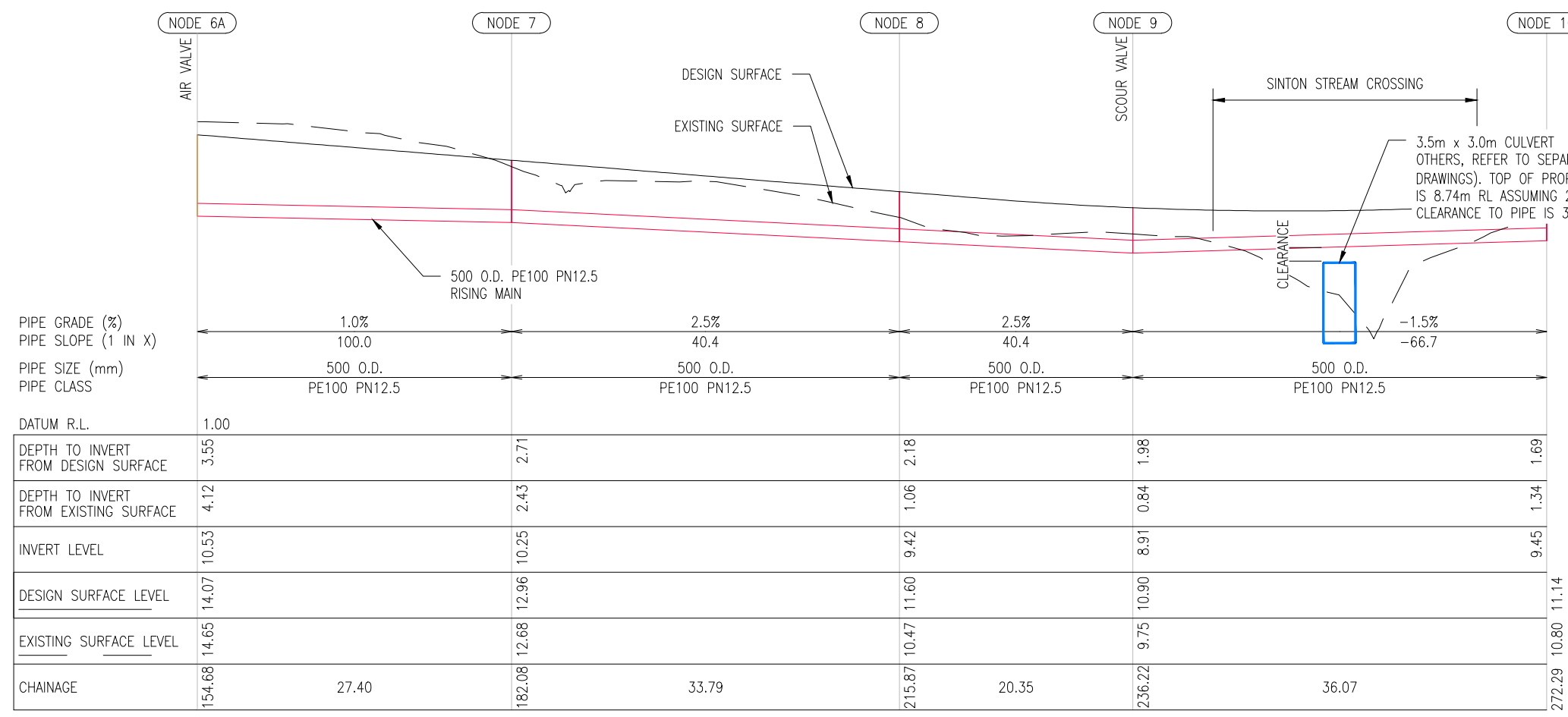


**LEGEND**

EXISTING	
— WSL —	WASTEWATER TRANSMISSION
— W —	WATER NETWORKS
— SW —	STORMWATER
— G —	GAS
— E —	ELECTRICAL
— T —	TELECOMMUNICATION
— FO —	TELECOM FIBRE OPTIC
— E(OH) —	OVERHEAD POWER CABLE
—	PROPERTY BOUNDARY
— // —	FENCE
— [ ] —	RETAINING WALL
[ ]	100-YEAR FLOOD PLAIN
PROPOSED	
— RM —	WASTEWATER RISING MAIN

**NOTE:**

ROAD DESIGN INFORMATION BY OTHERS HAS BEEN RE-PROJECTED FROM MT. EDEN TO NZTM TO MATCH CURRENT DESIGN COORDINATES. RE-PROJECTION IS NOT SURVEYOR VERIFIED AND INTENDED FOR DESIGN COORDINATION ONLY.



**DETAILED DESIGN**  
NOT FOR CONSTRUCTION

ISSUE	DATE	AMENDMENT	BY	APPD.	DESIGNED	BY	DATE
5	9-22	UPDATED RISING MAIN ROUTE ALIGNMENT	S.V.	P.H.	DES. APPROVED	P. HOUGHTON	9-22
4	4-22	RE-ISSUED FOR DETAILED DESIGN	J.C.	P.H.	DRAWN	S. WANG	9-22
3	12-21	ISSUED FOR DETAILED DESIGN	J.C.	P.H.	DWG. APPROVED	S. VASOL	9-22
2	8-21	RE-ISSUED FOR PRELIMINARY DESIGN	J.C.	P.H.	WSL DESIGN MGMT.	D. XIE	9-22
1	5-21	ISSUED FOR PRELIMINARY DESIGN	J.C.	P.H.	WSL PROJ. LEAD		

**Watercare**

COPYRIGHT - This drawing, the design concept, remain the exclusive property of Watercare Services Limited and may not be used without approval. Copyright reserved.

WHENUAPAI-REDHILLS WASTEWATER SERVICING  
BRIGHAM CREEK ROAD, WHENUAPAI  
INTERIM SLAUGHTERHOUSE PS - WASTEWATER RISING MAIN PLAN AND LONG SECTION - SHEET 2 OF 12



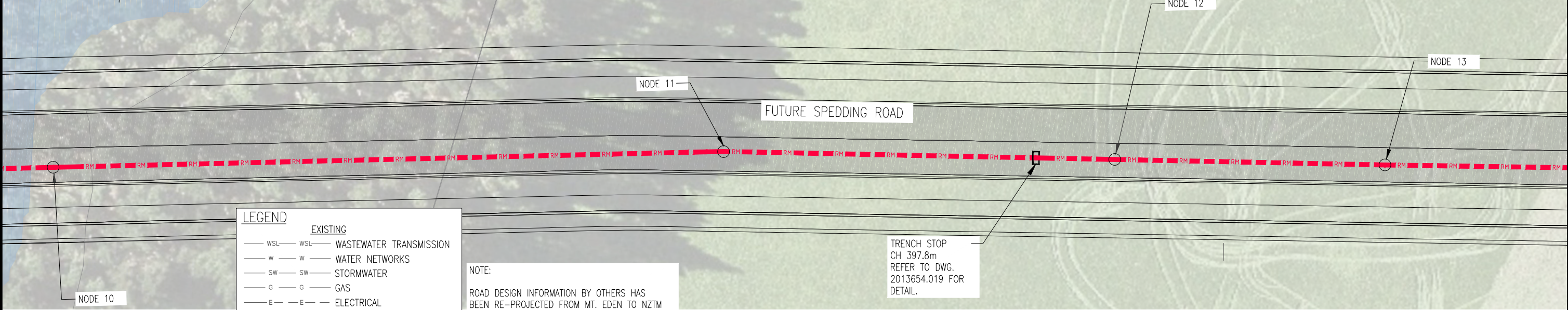
CAD FILE	2013654.004-016	DATE	09-09-22
ORIGINAL SCALE	A3 1:500	CONTRACT No.	6484-6934
REF No.	12508391   3-AWD32		
DWG No.	2013654.006	ISSUE	5



**IMPORTANT SERVICES NOTE**

THE SERVICES SHOWN SHOULD BE CONSIDERED INDICATIVE ONLY AND ARE BASED ON RECORDS SUPPLIED BY THE UTILITY COMPANIES. PRIVATE SERVICES AND CONNECTIONS ARE NOT SHOWN.

THE CONTRACTOR IS RESPONSIBLE FOR ENSURING ALL SERVICES ARE LOCATED/MARKED BY THE APPROPRIATE SERVICE AUTHORITY, OR THEIR OWN STAFF, PRIOR TO ANY SITE WORKS, AND FOR PROTECTING THESE SERVICES FOR THE DURATION OF THE SITE CONTRACT.

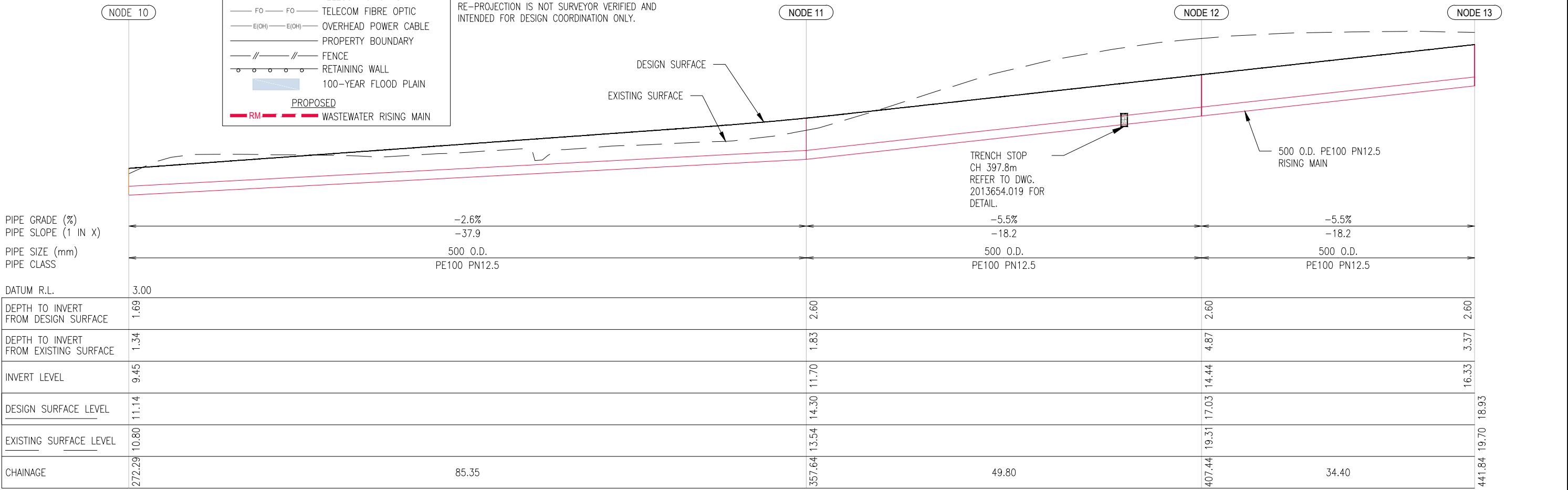


**LEGEND**

EXISTING	
— WSL —	WASTEWATER TRANSMISSION
— W —	WATER NETWORKS
— SW —	STORMWATER
— G —	GAS
— E —	ELECTRICAL
— T —	TELECOMMUNICATION
— FO —	TELECOM FIBRE OPTIC
— E(OH) —	OVERHEAD POWER CABLE
— — —	PROPERTY BOUNDARY
— // —	FENCE
— ○ —	RETAINING WALL
— — —	100-YEAR FLOOD PLAIN
PROPOSED	
— RM —	WASTEWATER RISING MAIN

**NOTE:**  
ROAD DESIGN INFORMATION BY OTHERS HAS BEEN RE-PROJECTED FROM MT. EDEN TO NZTM TO MATCH CURRENT DESIGN COORDINATES. RE-PROJECTION IS NOT SURVEYOR VERIFIED AND INTENDED FOR DESIGN COORDINATION ONLY.

TRENCH STOP  
CH 397.8m  
REFER TO DWG.  
2013654.019 FOR  
DETAIL.



**DETAILED DESIGN**  
NOT FOR CONSTRUCTION

ISSUE	DATE	AMENDMENT	BY	APPD.	DESIGNED	BY	DATE
5	9-22	UPDATED RISING MAIN ROUTE ALIGNMENT	S.V.	P.H.	DES. APPROVED	P. HOUGHTON	9-22
4	4-22	RE-ISSUED FOR DETAILED DESIGN	J.C.	P.H.	DRAWN	S. WANG	9-22
3	12-21	ISSUED FOR DETAILED DESIGN	J.C.	P.H.	DWG. APPROVED	S. VASOL	9-22
2	8-21	RE-ISSUED FOR PRELIMINARY DESIGN	J.C.	P.H.	WSL DESIGN MGMT.	D. XIE	9-22
1	5-21	ISSUED FOR PRELIMINARY DESIGN	J.C.	P.H.	WSL PROJ. LEAD		

**Watercare**  
COPYRIGHT - This drawing, the design concept, remain the exclusive property of Watercare Services Limited and may not be used without approval. Copyright reserved.

WHENUAPAI-REDHILLS WASTEWATER SERVICING  
BRIGHAM CREEK ROAD, WHENUAPAI  
INTERIM SLAUGHTERHOUSE PS - WASTEWATER RISING MAIN PLAN AND LONG SECTION - SHEET 3 OF 12



CAD FILE	2013654.004-016	DATE	09-09-22
ORIGINAL SCALE	A3 1:500	CONTRACT No.	6484-6934
REF No.	12508391   3-AWD32		
DWG No.	2013654.007	ISSUE	5