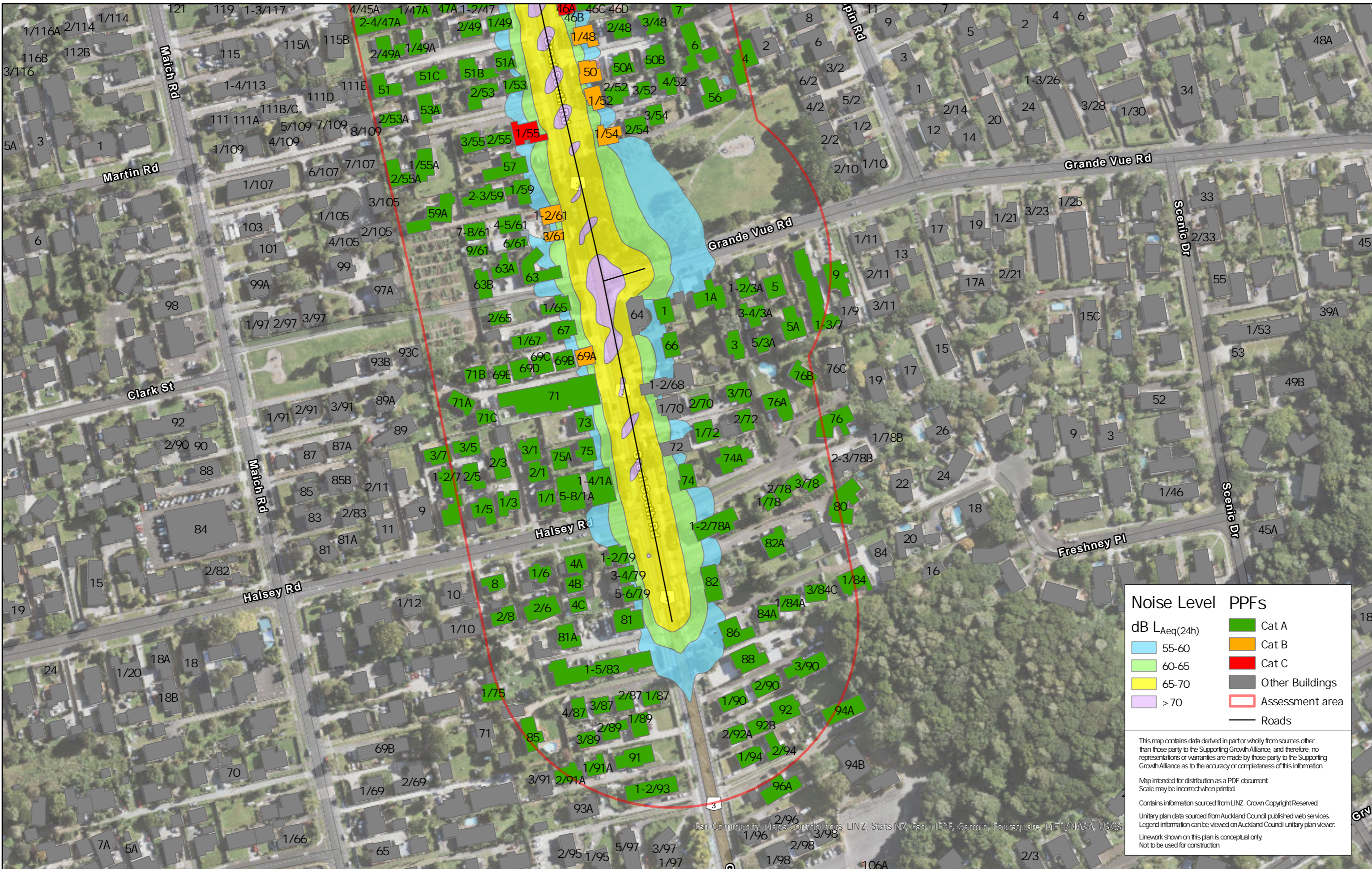


Date Printed: 7/04/2020 8:39 AM
Name: allNoR_Existing
Path: C:\GIS\SGA_FTNSGA_FTIN_newaprx



Noise Level

dB L_{Aeq(24h)}

- 55-60
- 60-65
- 65-70
- > 70

PPFs

- Cat A
- Cat B
- Cat C
- Other Buildings
- Assessment area
- Roads

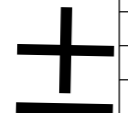
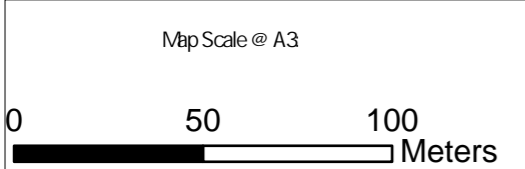
This map contains data derived in part or wholly from sources other than those party to the Supporting Growth Alliance, and therefore, no representations or warranties are made by those party to the Supporting Growth Alliance as to the accuracy or completeness of this information.

Map intended for distribution as a PDF document.
Scale may be incorrect when printed.

Contains information sourced from LINZ. Crown Copyright Reserved.

Unitary plan data sourced from Auckland Council published web services.
Legend information can be viewed on Auckland Council unitary plan viewer.

Linework shown on this plan is conceptual only.
Not to be used for construction.



| Revision | Author | Verified | Approved | Date |
|----------|--------|----------|----------|------------|
| 1 | Author | DRAFT | DRAFT | dd/mm/yyyy |

Supporting Growth
NoR 1-A-B - Existing Road Traffic Noise

Working Plans of Te Tupu Ngatahi.
 For the purpose of INTERNAL workshops (not for wider distribution)

Client: Supporting Growth

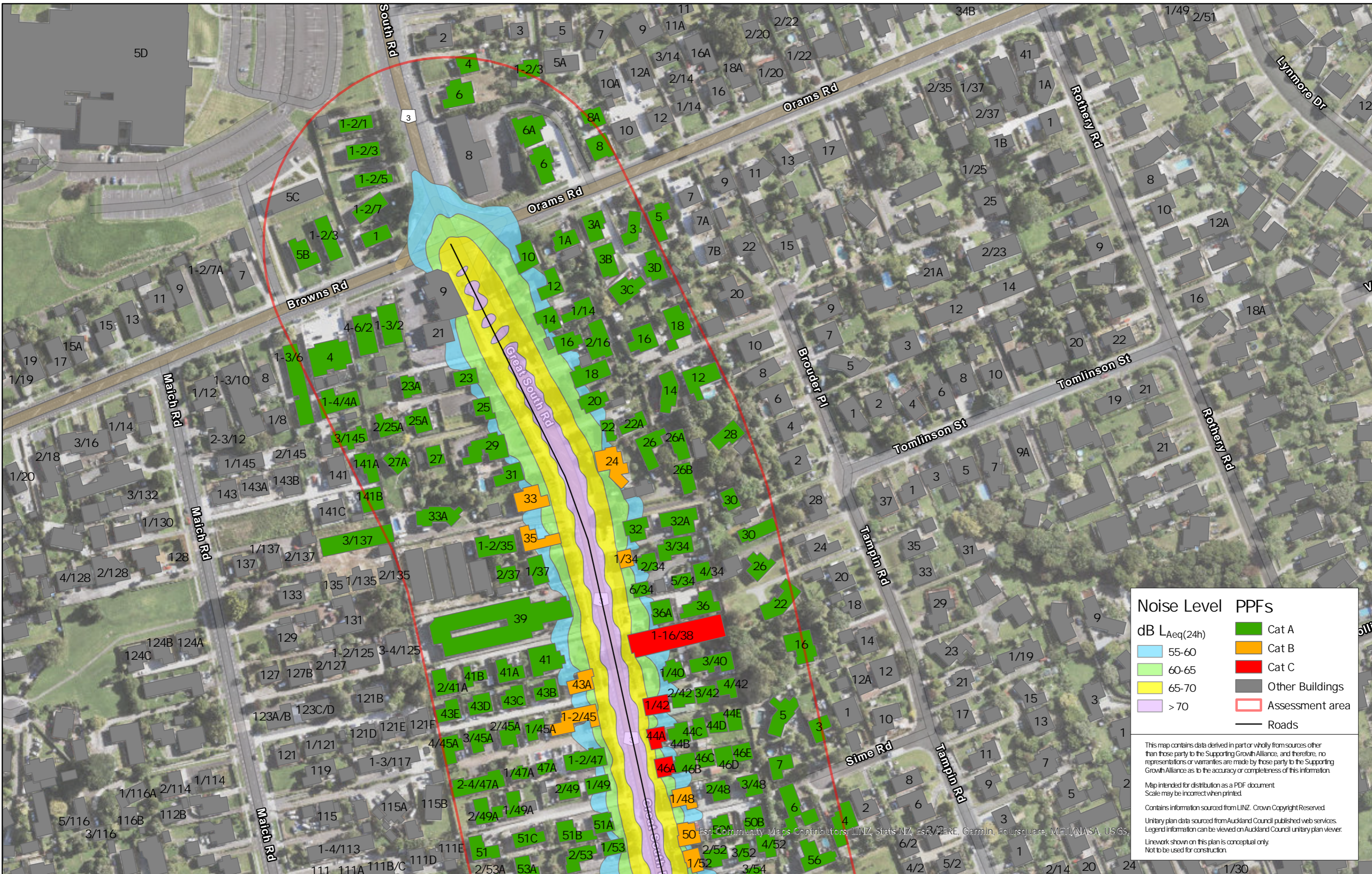
Project: South FTN Package



Discipline: GIS

Drawing No: SGA-XX-XX-004

Date Printed: 7/04/2020 8:39AM
Name: allNoR_DoNothing
Path: C:\GIS\SGA_FTNSGA_FTIN_newaprx



| Noise Level PPFs | |
|------------------|-----------------|
| dB LAeq(24h) | Cat A |
| 55-60 | Cat B |
| 60-65 | Cat C |
| 65-70 | Other Buildings |
| > 70 | Assessment area |
| | Roads |

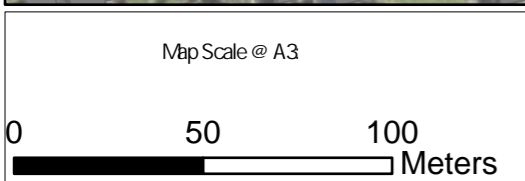
This map contains data derived in part or wholly from sources other than those party to the Supporting Growth Alliance, and therefore, no representations or warranties are made by those party to the Supporting Growth Alliance as to the accuracy or completeness of this information.

Map intended for distribution as a PDF document
Scale may be incorrect when printed.

Contains information sourced from LINZ. Crown Copyright Reserved.

Unitary plan data sourced from Auckland Council published web services.
Legend information can be viewed on Auckland Council unitary plan viewer.

Line work shown on this plan is conceptual only.
Not to be used for construction.

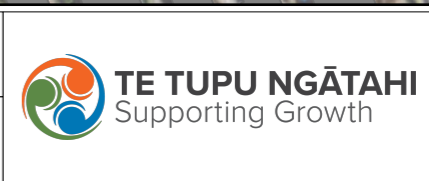


| Revision | Author | Verified | Approved | Date | Title: |
|----------|--------|----------|----------|------------|--------|
| 1 | Author | DRAFT | DRAFT | dd/mm/yyyy | |

Supporting Growth
NoR 1-A-B - Do-nothing Road Traffic Noise

Working Plans of Te Tupu Ngatahi.
 For the purpose of INTERNAL workshops (not for wider distribution)

| | |
|---------|-------------------|
| Client | Supporting Growth |
| Project | South FTN Package |

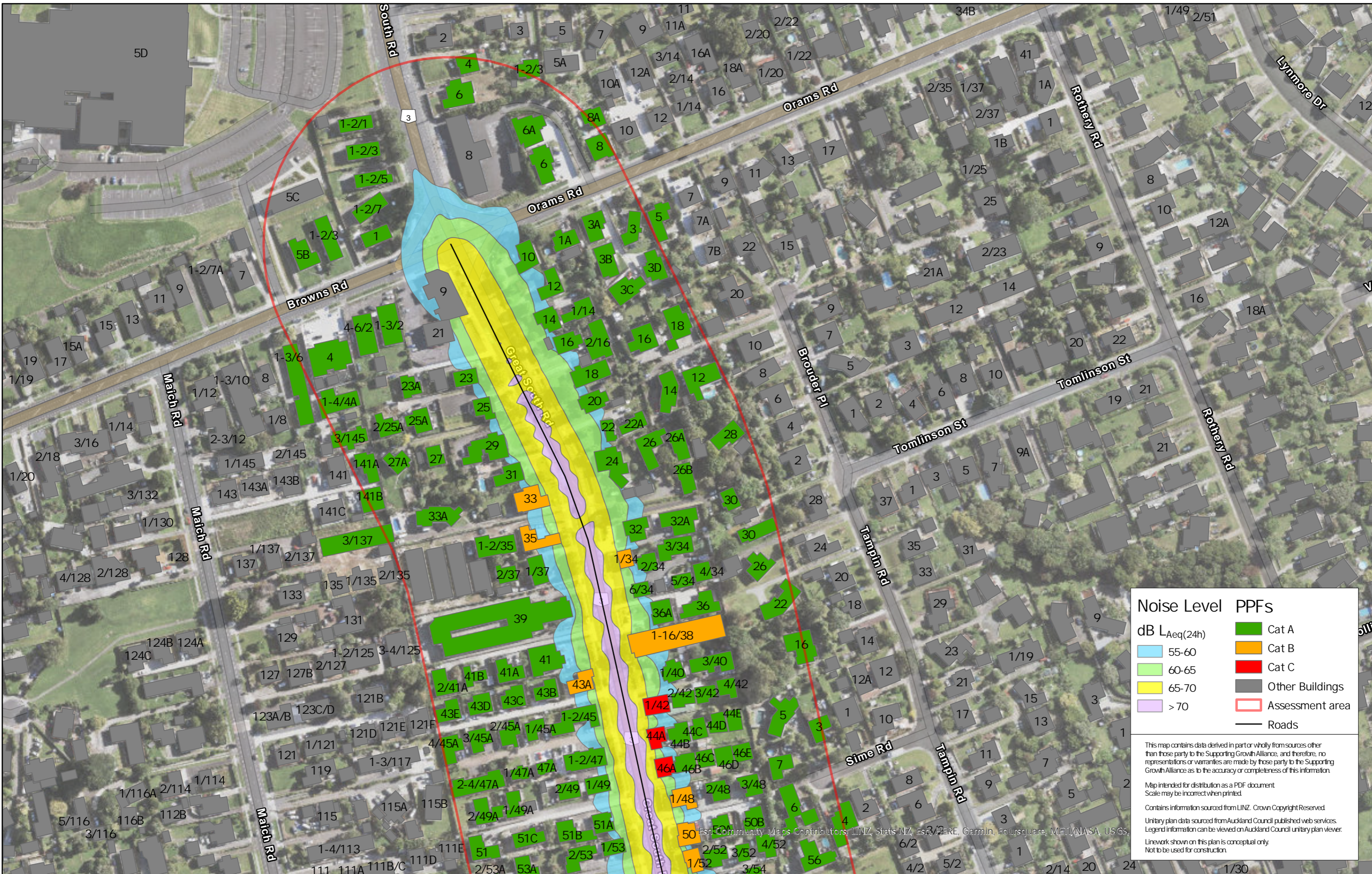


| | |
|-------------|---------------|
| Discipline: | GIS |
| Drawing No: | SGA-XX-XX-004 |

Date Printed: 7/04/2020 8:39AM

Name: allNoR_DoVn

Path: C:\GIS\SGA_FTNSGA_FTIN_newaprx



| Noise Level PPFs | |
|------------------|-----------------|
| dB LAeq(24h) | |
| 55-60 | Cat A |
| 60-65 | Cat B |
| 65-70 | Cat C |
| > 70 | Other Buildings |
| | Assessment area |
| | Roads |

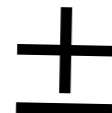
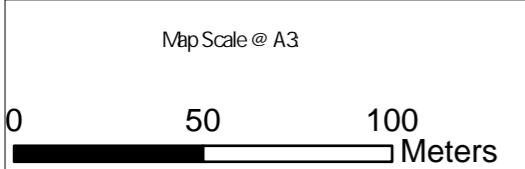
This map contains data derived in part or wholly from sources other than those party to the Supporting Growth Alliance, and therefore, no representations or warranties are made by those party to the Supporting Growth Alliance as to the accuracy or completeness of this information.

Map intended for distribution as a PDF document
Scale may be incorrect when printed.

Contains information sourced from LINZ. Crown Copyright Reserved.

Unitary plan data sourced from Auckland Council published web services.
Legend information can be viewed on Auckland Council unitary plan viewer.

Line work shown on this plan is conceptual only.
Not to be used for construction.



| Revision | Author | Verified | Approved | Date | Title: |
|----------|--------|----------|----------|------------|--------|
| 1 | Author | DRAFT | DRAFT | dd/mm/yyyy | |

Supporting Growth
NoR 1-A-B - Do Minimum Road Traffic Noise

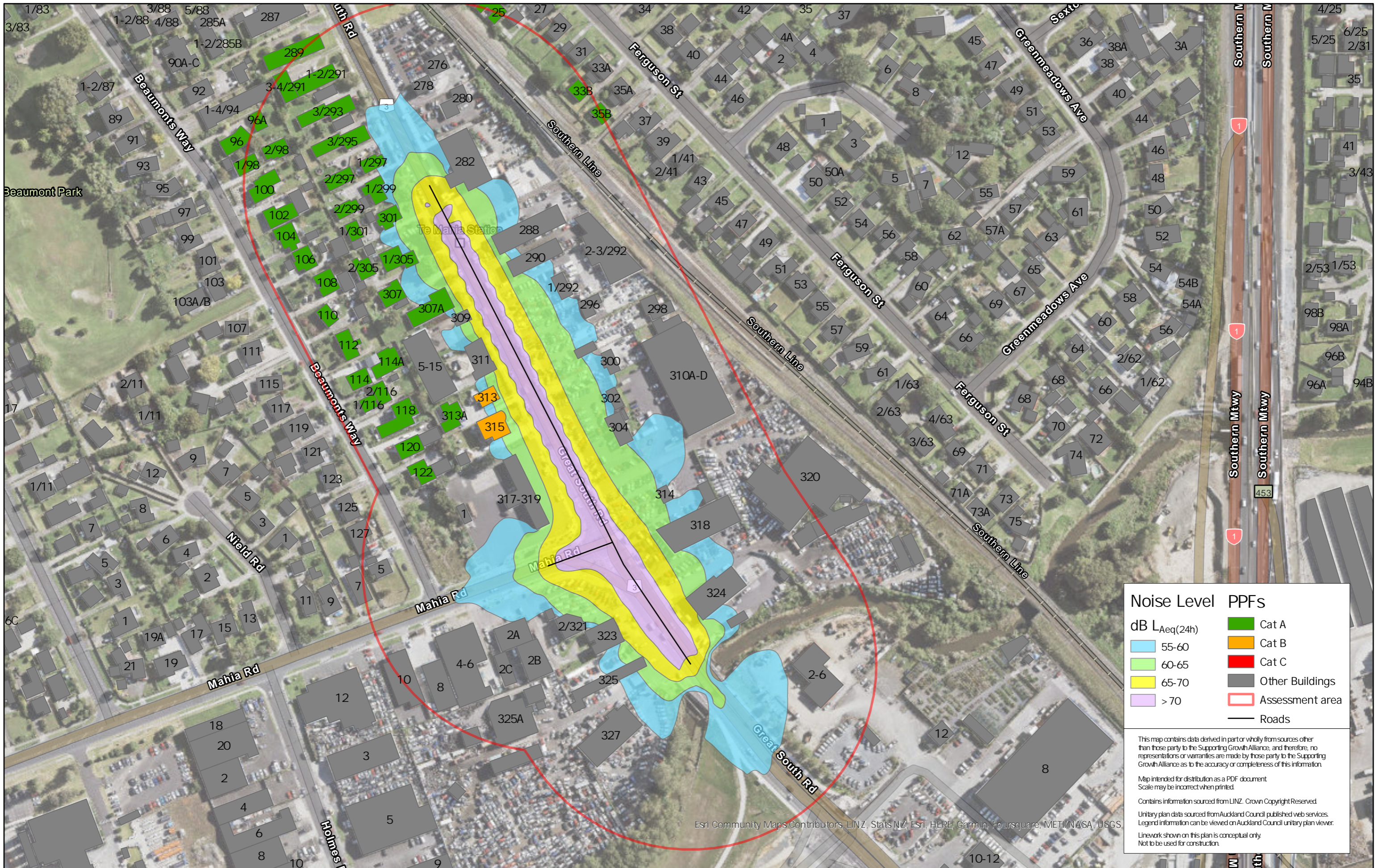
Working Plans of Te Tupu Ngatahi.
 For the purpose of INTERNAL workshops (not for wider distribution)

| | |
|---------|-------------------|
| Client | Supporting Growth |
| Project | South FTN Package |



| | |
|-------------|---------------|
| Discipline: | GIS |
| Drawing No: | SGA-XX-XX-004 |

Date Printed: 7/04/2020 8:39AM
Name: allNoR_Existing
Path: C:\GIS\GISGA_FTNSGA_FTIN_newaprx



| Noise Level | | PPFs | |
|-------------------|--|-----------------|--|
| dB $L_{Aeq}(24h)$ | | Cat A | |
| 55-60 | | Cat B | |
| 60-65 | | Cat C | |
| 65-70 | | Other Buildings | |
| > 70 | | Assessment area | |
| | | Roads | |

This map contains data derived in part or wholly from sources other than those party to the Supporting Growth Alliance, and therefore, no representations or warranties are made by those party to the Supporting Growth Alliance as to the accuracy or completeness of this information.

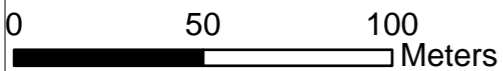
Map intended for distribution as a PDF document
Scale may be incorrect when printed

Contains information sourced from LINZ. Crown Copyright Reserved

Unitary plan data sourced from Auckland Council published web services.
Legend information can be viewed on Auckland Council unitary plan viewer.

Line work shown on this plan is conceptual only.
Not to be used for construction.

Map Scale @ A3



| Revision | Author | Verified | Approved | Date |
|----------|--------|----------|----------|-----------|
| 1 | Author | DRAFT | DRAFT | d/dm/yyyy |

Supporting Growth
NoR 1-C - Existing Road Traffic Noise

Working Plans of Te Tupu Ngatahi.
For the purpose of INTERNAL workshops (not for wider distribution)

Client: Supporting Growth

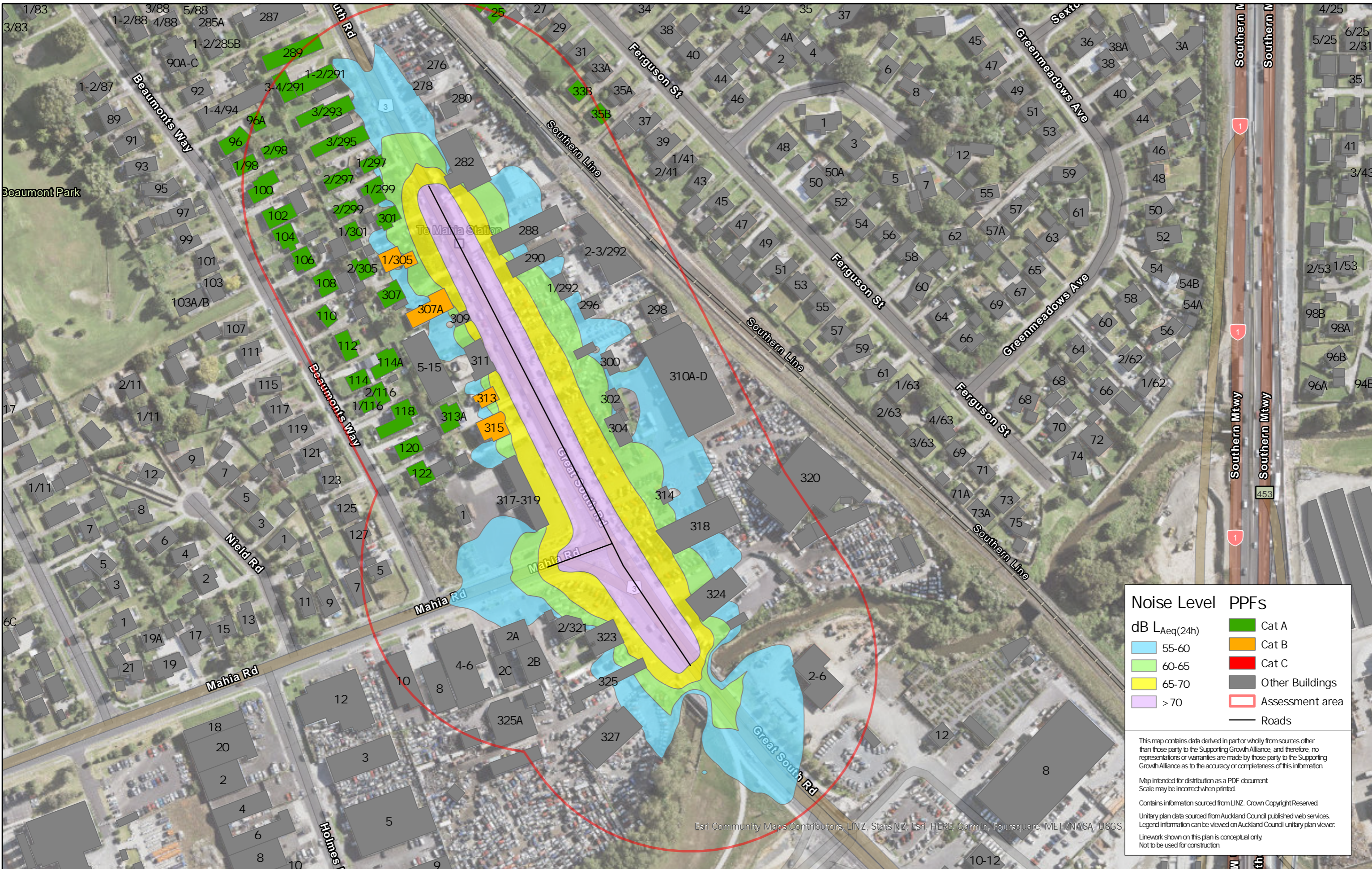
Project: South FTN Package



Discipline: GIS

Drawing No: SGA-XX-XX-004

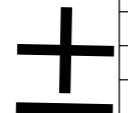
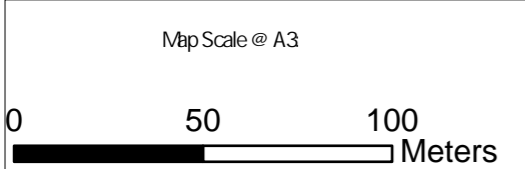
Date Printed: 7/04/2020 8:39AM
 Name: allNoR_DoNothing
 Path: C:\GIS\SGA_FTNSGA_FTIN_newaprx



Noise Level PPFs

| | |
|-------------------|------------------------|
| dB $L_{Aeq}(24h)$ | Cat A |
| 55-60 | Cat B |
| 60-65 | Cat C |
| 65-70 | Other Buildings |
| > 70 | Assessment area |
| | Roads |

This map contains data derived in part or wholly from sources other than those party to the Supporting Growth Alliance, and therefore, no representations or warranties are made by those party to the Supporting Growth Alliance as to the accuracy or completeness of this information.
 Map intended for distribution as a PDF document
 Scale may be incorrect when printed.
 Contains information sourced from LINZ. Crown Copyright Reserved.
 Unitary plan data sourced from Auckland Council published web services.
 Legend information can be viewed on Auckland Council unitary plan viewer.
 Linework shown on this plan is conceptual only.
 Not to be used for construction.



| Revision | Author | Verified | Approved | Date |
|----------|--------|----------|----------|------------|
| 1 | Author | DRAFT | DRAFT | dd/mm/yyyy |

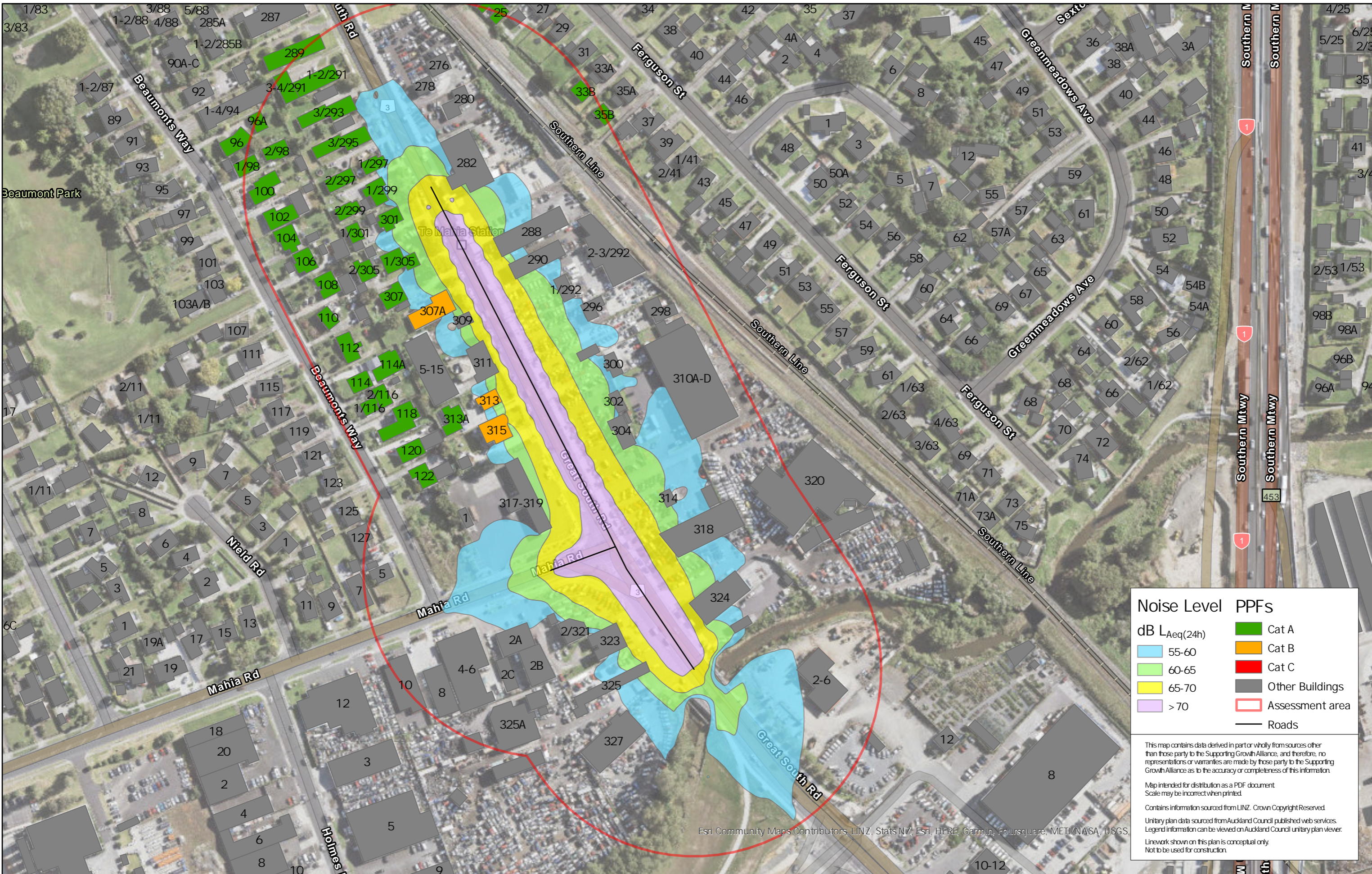
Title: Supporting Growth
NoR 1-C - Do-nothing Road Traffic Noise
 Working Plans of Te Tupu Ngatahi.
 For the purpose of INTERNAL workshops (not for wider distribution)

Client: Supporting Growth
Project: South FTN Package



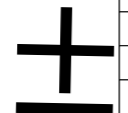
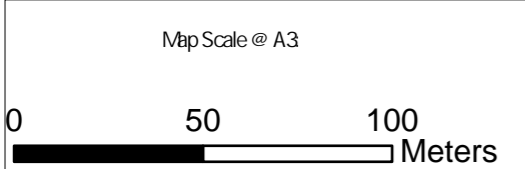
Discipline: GIS
Drawing No: SGA-XX-XX-004

Date Printed: 7/04/2020 8:39 AM
 Name: allNoR_DoMn
 Path: C:\GIS\SGA_FTNSGA_FTIN_newaprx



| Noise Level | | PPFs | |
|--------------|--|-----------------|--|
| dB LAeq(24h) | | | |
| 55-60 | | Cat A | |
| 60-65 | | Cat B | |
| 65-70 | | Cat C | |
| > 70 | | Other Buildings | |
| | | Assessment area | |
| | | Roads | |

This map contains data derived in part or wholly from sources other than those party to the Supporting Growth Alliance, and therefore, no representations or warranties are made by those party to the Supporting Growth Alliance as to the accuracy or completeness of this information.
 Map intended for distribution as a PDF document
 Scale may be incorrect when printed.
 Contains information sourced from LINZ. Crown Copyright Reserved.
 Unitary plan data sourced from Auckland Council published web services.
 Legend information can be viewed on Auckland Council unitary plan viewer.
 Linework shown on this plan is conceptual only.
 Not to be used for construction.



| Revision | Author | Verified | Approved | Date |
|----------|--------|----------|----------|------------|
| 1 | Author | DRAFT | DRAFT | d/d/m/yyyy |

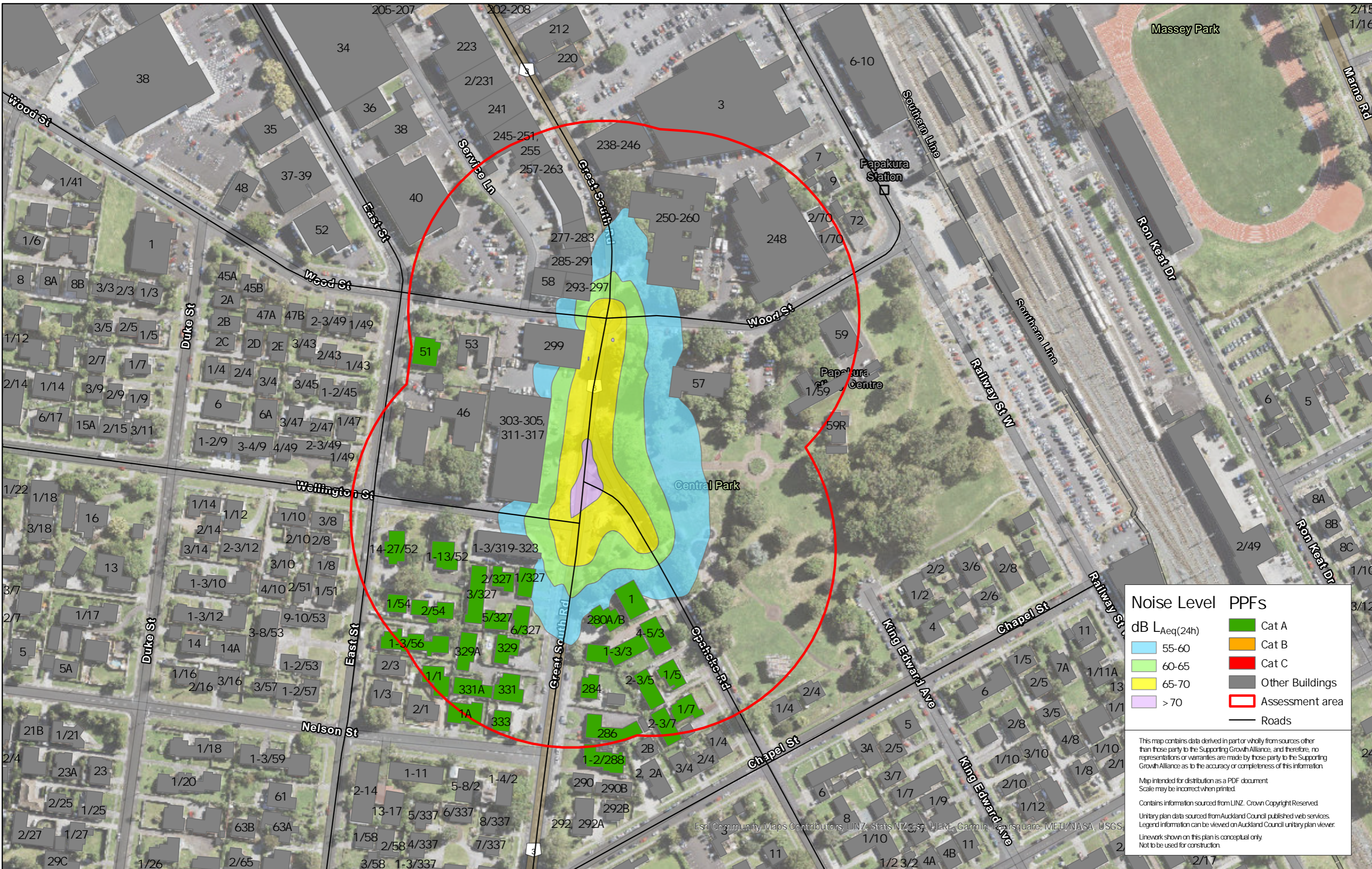
Supporting Growth
NoR 1-C - Do Minimum Road Traffic Noise
 Working Plans of Te Tupu Ngatahi
 For the purpose of INTERNAL workshops (not for wider distribution)

| | |
|---------|-------------------|
| Client | Supporting Growth |
| Project | South FTN Package |



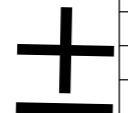
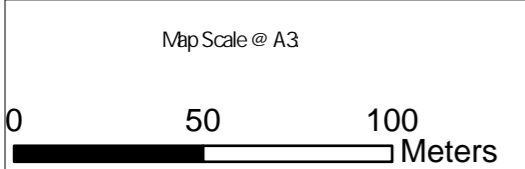
Discipline:
 GIS
 Drawing No:
 SGA-XX-XX-004

Date Printed: 7/04/2020 8:39 AM
 Name: allNoR_Existing
 Path: C:\GIS\SGA_FTNSGA_FTIN_newaprx



| Noise Level | | PPFs | |
|---------------------------|--|-----------------|--|
| dB L _{Aeq} (24h) | | Cat A | |
| 55-60 | | Cat B | |
| 60-65 | | Cat C | |
| 65-70 | | Other Buildings | |
| > 70 | | Assessment area | |
| | | Roads | |

This map contains data derived in part or wholly from sources other than those party to the Supporting Growth Alliance, and therefore, no representations or warranties are made by those party to the Supporting Growth Alliance as to the accuracy or completeness of this information.
 Map intended for distribution as a PDF document
 Scale may be incorrect when printed.
 Contains information sourced from LINZ. Crown Copyright Reserved.
 Unitary plan data sourced from Auckland Council published web services.
 Legend information can be viewed on Auckland Council unitary plan viewer.
 Esri Community Maps Contributors, LINZ, Stats NZ, Esri, HERE, Garmin, FourSquare, METI/NASA, USGS.
 Linework shown on this plan is conceptual only.
 Not to be used for construction.



| Revision | Author | Verified | Approved | Date | Title |
|----------|--------|----------|----------|------------|-------|
| 1 | Author | DRAFT | DRAFT | dd/mm/yyyy | |

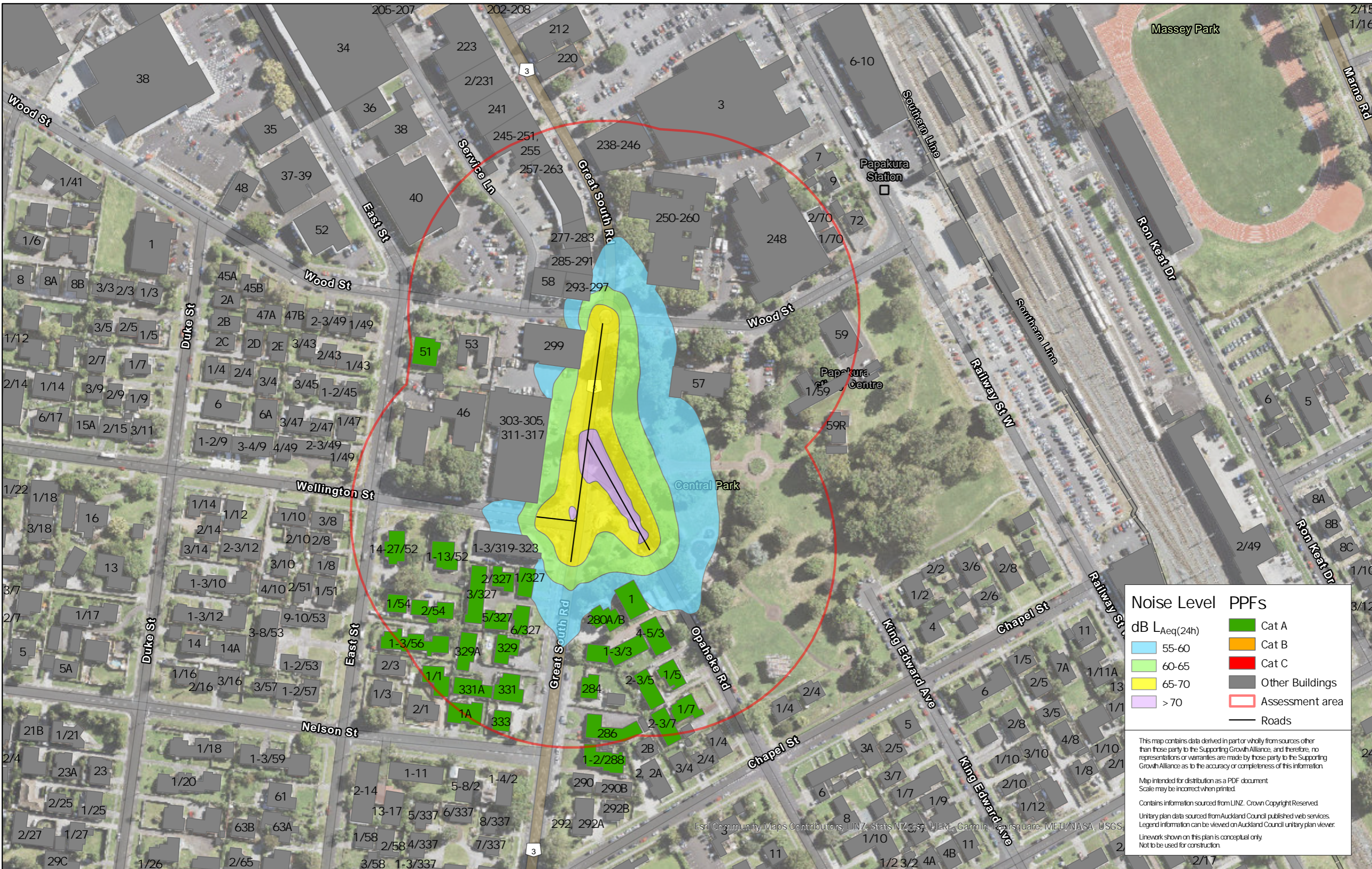
Supporting Growth
NoR 1-F - Existing Road Traffic Noise
 Working Plans of Te Tupu Ngatahi.
 For the purpose of INTERNAL workshops (not for wider distribution)

Client: Supporting Growth
 Project: South FTN Package



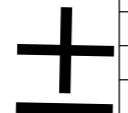
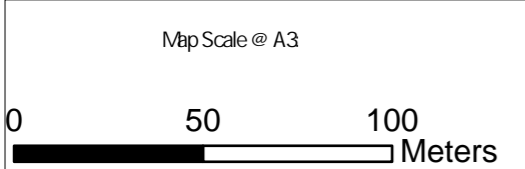
Discipline: GIS
 Drawing No: SGA-XX-XX-004

Date Printed: 7/04/2020 8:39 AM
 Name: allNoR_DoMn
 Path: C:\GIS\SGA_FTNSGA_FTIN_newaprx



| Noise Level | | PPFs | |
|---------------------------|--|-----------------|--|
| dB L _{Aeq} (24h) | | Cat A | |
| 55-60 | | Cat B | |
| 60-65 | | Cat C | |
| 65-70 | | Other Buildings | |
| > 70 | | Assessment area | |
| | | Roads | |

This map contains data derived in part or wholly from sources other than those party to the Supporting Growth Alliance, and therefore, no representations or warranties are made by those party to the Supporting Growth Alliance as to the accuracy or completeness of this information.
 Map intended for distribution as a PDF document
 Scale may be incorrect when printed.
 Contains information sourced from LINZ. Crown Copyright Reserved.
 Unitary plan data sourced from Auckland Council published web services.
 Legend information can be viewed on Auckland Council unitary plan viewer.
 Esri Community Maps Contributors, LINZ, Stats NZ, Esri, HERE, Garmin, FourSquare, METI/NASA, USGS.
 Line work shown on this plan is conceptual only.
 Not to be used for construction.



| Revision | Author | Verified | Approved | Date |
|----------|--------|----------|----------|------------|
| 1 | Author | DRAFT | DRAFT | dd/mm/yyyy |

Title: Supporting Growth
 NoR 1-F - Do Minimum Road Traffic Noise
 Working Plans of Te Tupu Ngatahi.
 For the purpose of INTERNAL workshops (not for wider distribution)

Client: Supporting Growth
Project: South FTN Package

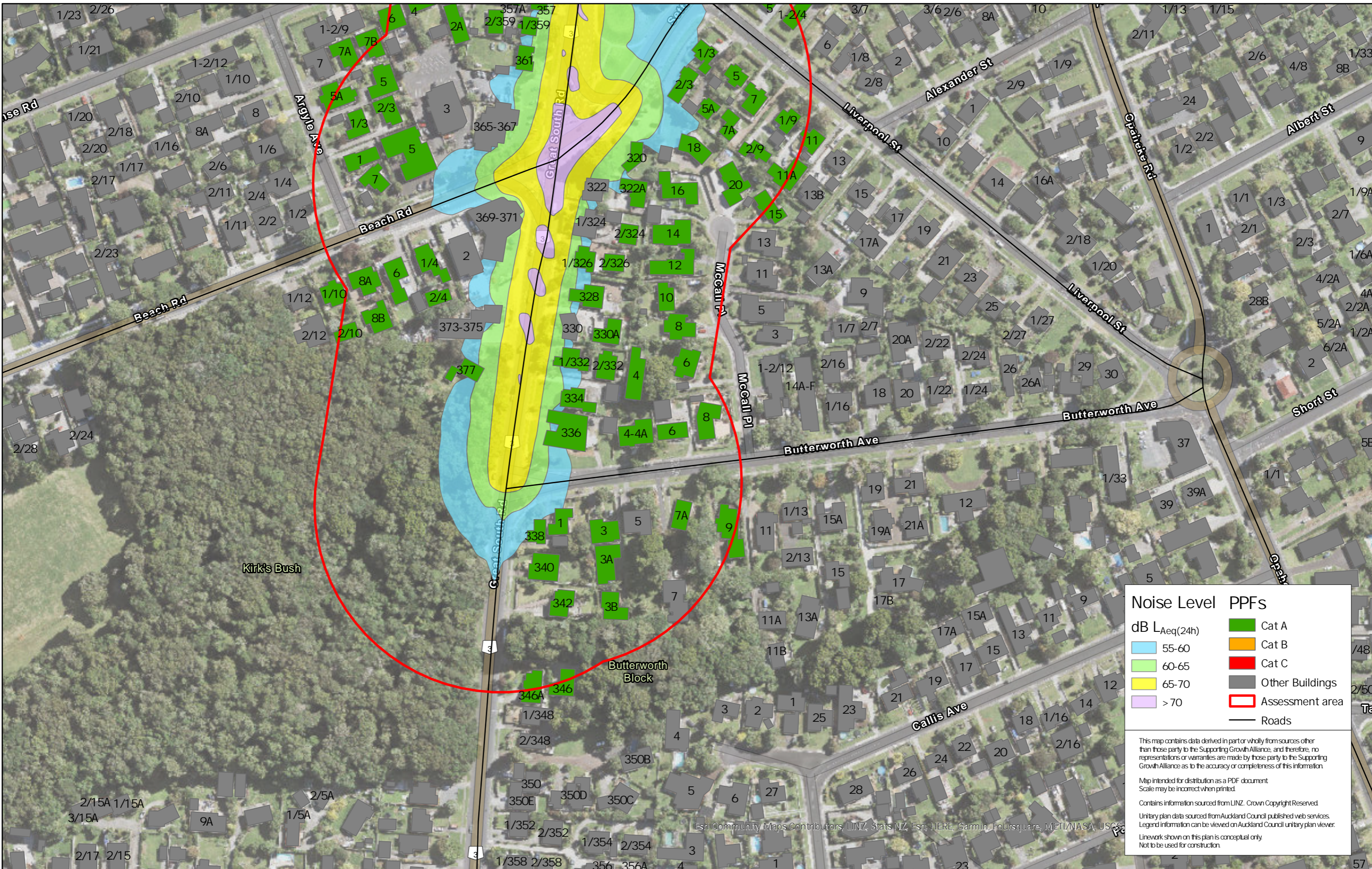


Discipline: GIS
Drawing No: SGA-XX-XX-004

Date Printed: 7/04/2020 8:39AM

Name: allNoR_Existing

Path: C:\GIS\SGA_FTNSGA_FTIN_newaprx



Noise Level PPFs

| dB L _{Aeq} (24h) | Cat |
|---------------------------|-----------------|
| 55-60 | Cat A |
| 60-65 | Cat B |
| 65-70 | Cat C |
| > 70 | Other Buildings |

Assessment area
 Roads

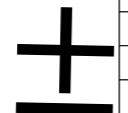
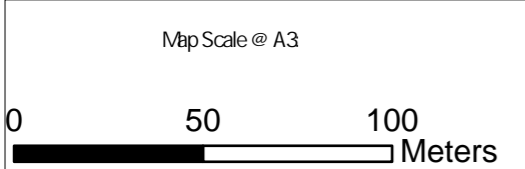
This map contains data derived in part or wholly from sources other than those party to the Supporting Growth Alliance, and therefore, no representations or warranties are made by those party to the Supporting Growth Alliance as to the accuracy or completeness of this information.

Map intended for distribution as a PDF document. Scale may be incorrect when printed.

Contains information sourced from LINZ. Crown Copyright Reserved.

Unitary plan data sourced from Auckland Council published web services. Legend information can be viewed on Auckland Council unitary plan viewer.

Linework shown on this plan is conceptual only. Not to be used for construction.



| Revision | Author | Verified | Approved | Date |
|----------|--------|----------|----------|------------|
| 1 | Author | DRAFT | DRAFT | dd/mm/yyyy |

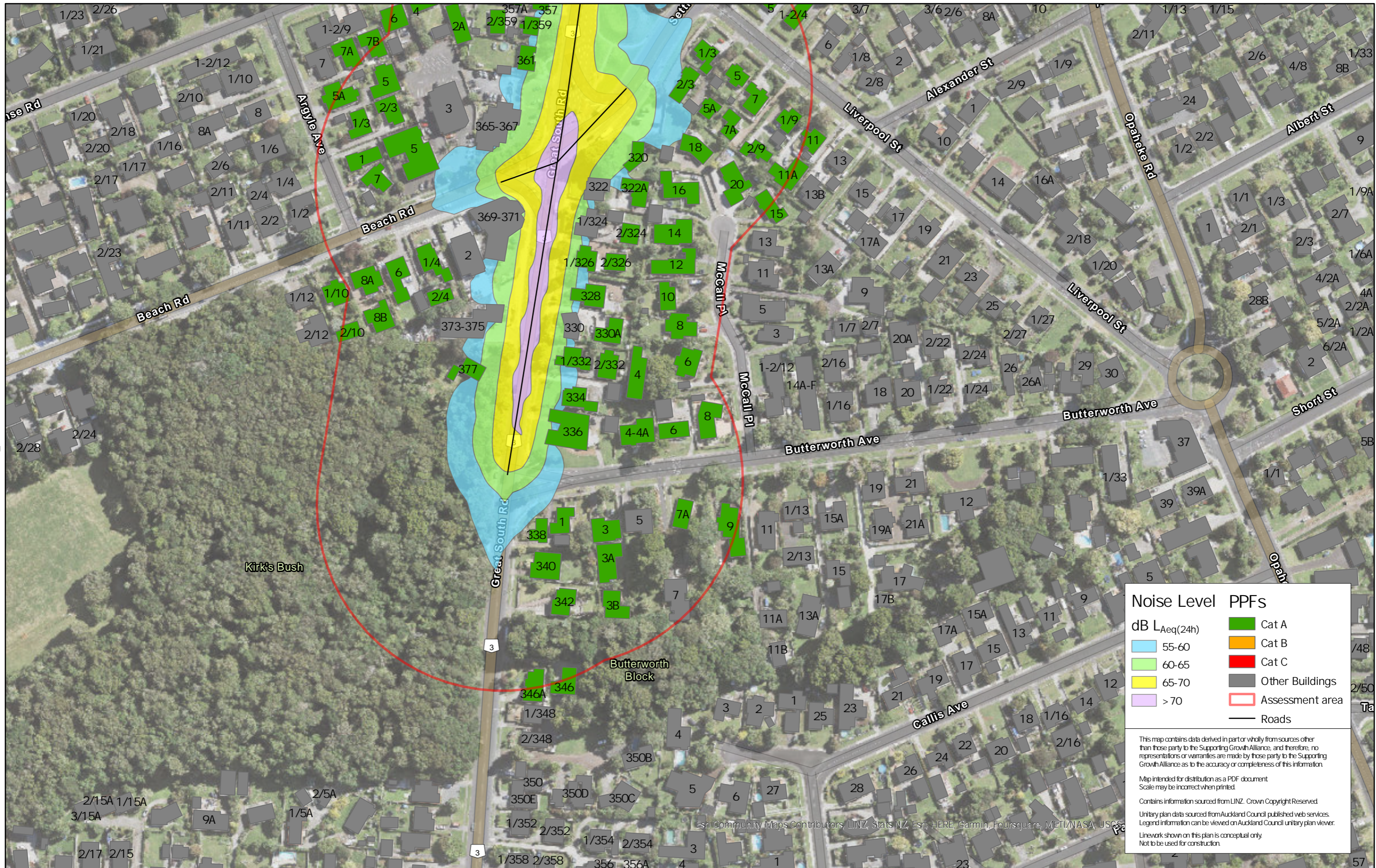
Supporting Growth
NoR 1-G - Existing Road Traffic Noise

Working Plans of Te Tupu Ngatahi.
 For the purpose of INTERNAL workshops (not for wider distribution)

Client: Supporting Growth
 Project: South FTN Package



Discipline: GIS
 Drawing No: SGA-XX-XX-004



| Noise Level PPFs | |
|------------------|-----------------|
| dB LAeq(24h) | |
| 55-60 | Cat A |
| 60-65 | Cat B |
| 65-70 | Cat C |
| > 70 | Other Buildings |
| | Assessment area |
| | Roads |

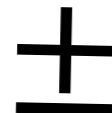
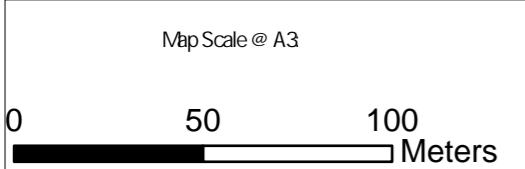
This map contains data derived in part or wholly from sources other than those party to the Supporting Growth Alliance, and therefore, no representations or warranties are made by those party to the Supporting Growth Alliance as to the accuracy or completeness of this information.

Map intended for distribution as a PDF document
Scale may be incorrect when printed.

Contains information sourced from LINZ. Crown Copyright Reserved.

Unitary plan data sourced from Auckland Council published web services.
Legend information can be viewed on Auckland Council unitary plan viewer.

Linework shown on this plan is conceptual only.
Not to be used for construction.



| Revision | Author | Verified | Approved | Date |
|----------|--------|----------|----------|------------|
| 1 | Author | DRAFT | DRAFT | dd/mm/yyyy |

Supporting Growth
NoR 1-G - Do Minimum Road Traffic Noise

Working Plans of Te Tupu Ngatahi.
 For the purpose of INTERNAL workshops (not for wider distribution)

Client: Supporting Growth

Project: South FTN Package



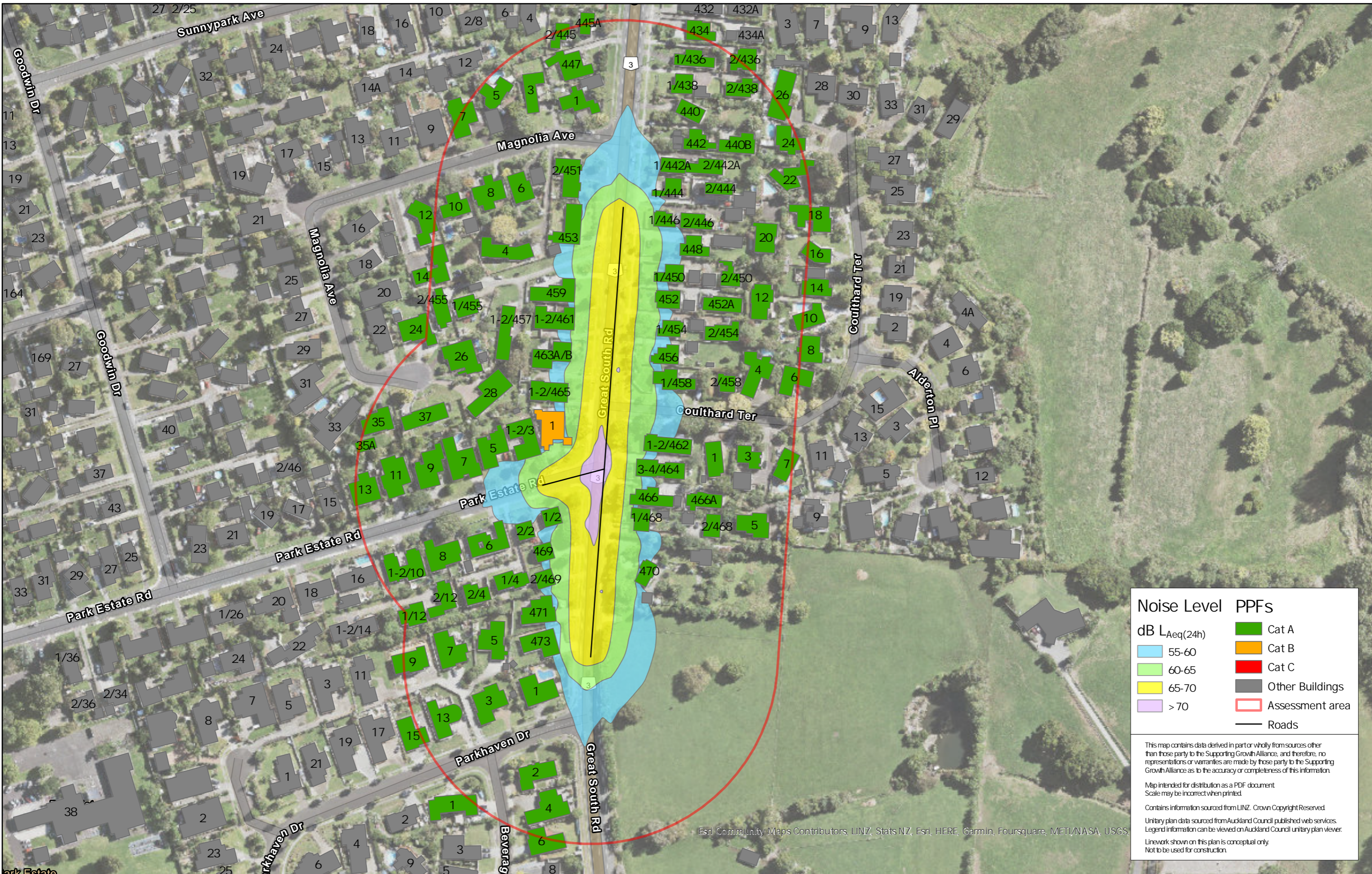
Discipline: GIS

Drawing No: SGA-XX-XX-004

Date Printed: 7/04/2020 8:39AM

Name: allNoR_Existing

Path: C:\GIS\SGA_FTNSGA_FTIN_newaprx



| Noise Level PPFs | |
|---------------------------|-----------------|
| dB L _{Aeq} (24h) | |
| 55-60 | Cat A |
| 60-65 | Cat B |
| 65-70 | Cat C |
| > 70 | Other Buildings |
| | Assessment area |
| | Roads |

This map contains data derived in part or wholly from sources other than those party to the Supporting Growth Alliance, and therefore, no representations or warranties are made by those party to the Supporting Growth Alliance as to the accuracy or completeness of this information.

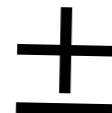
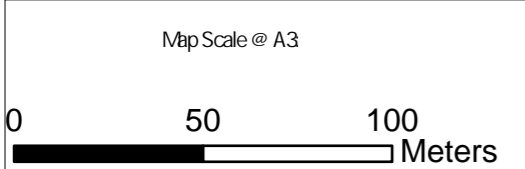
Map intended for distribution as a PDF document. Scale may be incorrect when printed.

Contains information sourced from LINZ. Crown Copyright Reserved.

Unitary plan data sourced from Auckland Council published web services. Legend information can be viewed on Auckland Council unitary plan viewer.

Linework shown on this plan is conceptual only. Not to be used for construction.

Esri, Community Maps Contributors, LINZ, Stats NZ, Esri, HERE, Garmin, Foursquare, METI/NASA, USGS



| Revision | Author | Verified | Approved | Date | Title: |
|----------|--------|----------|----------|------------|--------|
| 1 | Author | DRAFT | DRAFT | dd/mm/yyyy | |

Supporting Growth
NoR 1-H - Existing Road Traffic Noise

Working Plans of Te Tupu Ngatahi.
 For the purpose of INTERNAL workshops (not for wider distribution)

| | |
|---------|-------------------|
| Client | Supporting Growth |
| Project | South FTN Package |



| | |
|-------------|---------------|
| Discipline: | GIS |
| Drawing No: | SGA-XX-XX-004 |