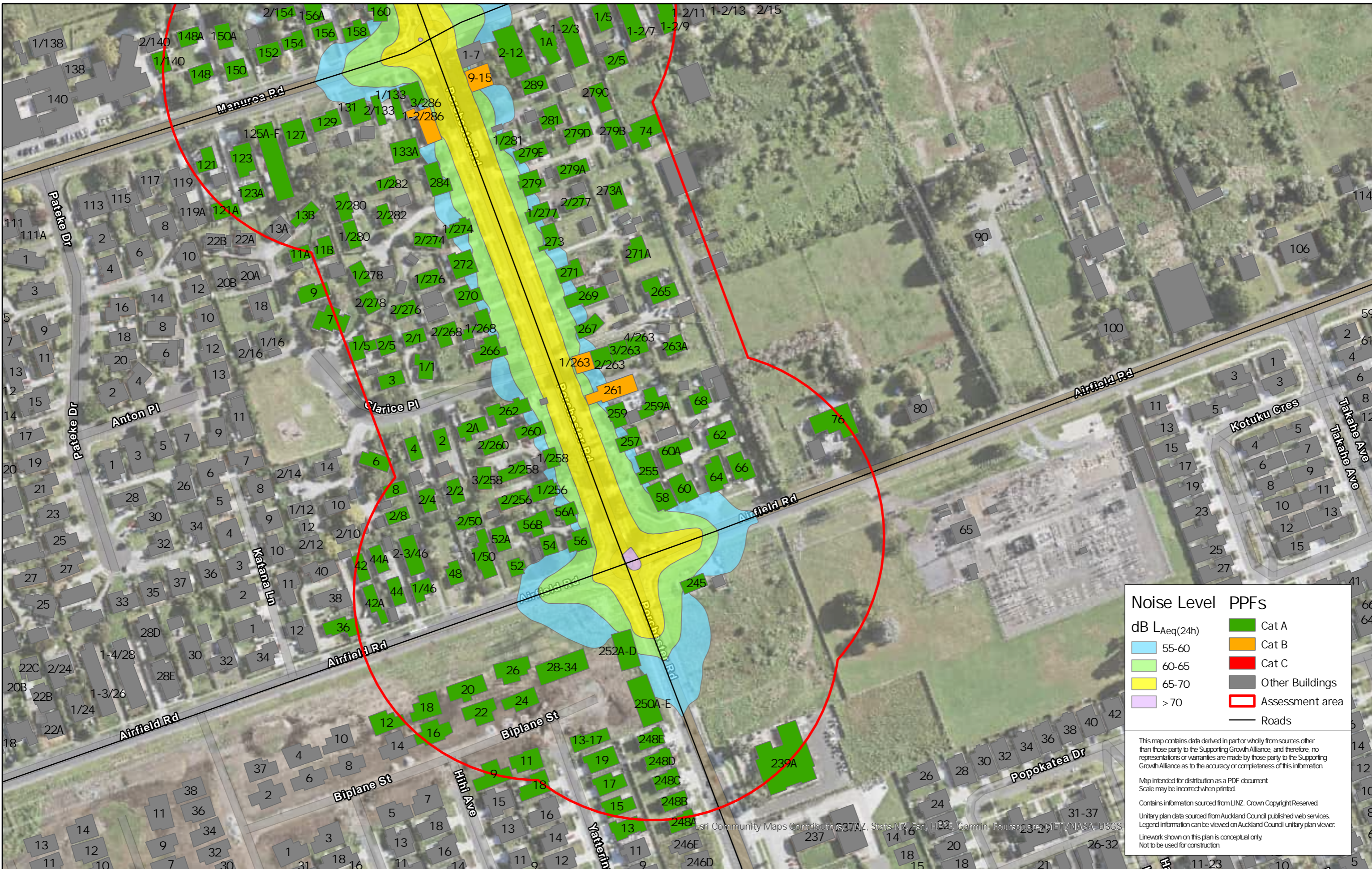


Name: NoR4\_Existing(CuPopResRd) Date Printed: 7/04/2020 8:39 AM



Noise Level PPFs	
dB L <sub>Aeq</sub> (24h)	Cat A
55-60	Cat B
60-65	Cat C
65-70	Other Buildings
> 70	Assessment area
	Roads

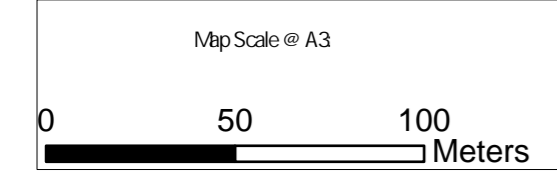
This map contains data derived in part or wholly from sources other than those party to the Supporting Growth Alliance, and therefore, no representations or warranties are made by those party to the Supporting Growth Alliance as to the accuracy or completeness of this information.

Map intended for distribution as a PDF document. Scale may be incorrect when printed.

Contains information sourced from LINZ. Crown Copyright Reserved.

Unitary plan data sourced from Auckland Council published web services. Legend information can be viewed on Auckland Council unitary plan viewer.

Line work shown on this plan is conceptual only. Not to be used for construction.



Revision	Author	Verified	Approved	Date	Title:
1	Author	DRAFT	DRAFT	dtdm/yyyy	

**Supporting Growth**  
**NoR 4 - Existing Road Traffic Noise**

Working Plans of Te Tupu Ngātahi.  
 For the purpose of INTERNAL workshops (not for wider distribution)

Client: Supporting Growth

Project: South FTN Package



Discipline: GIS

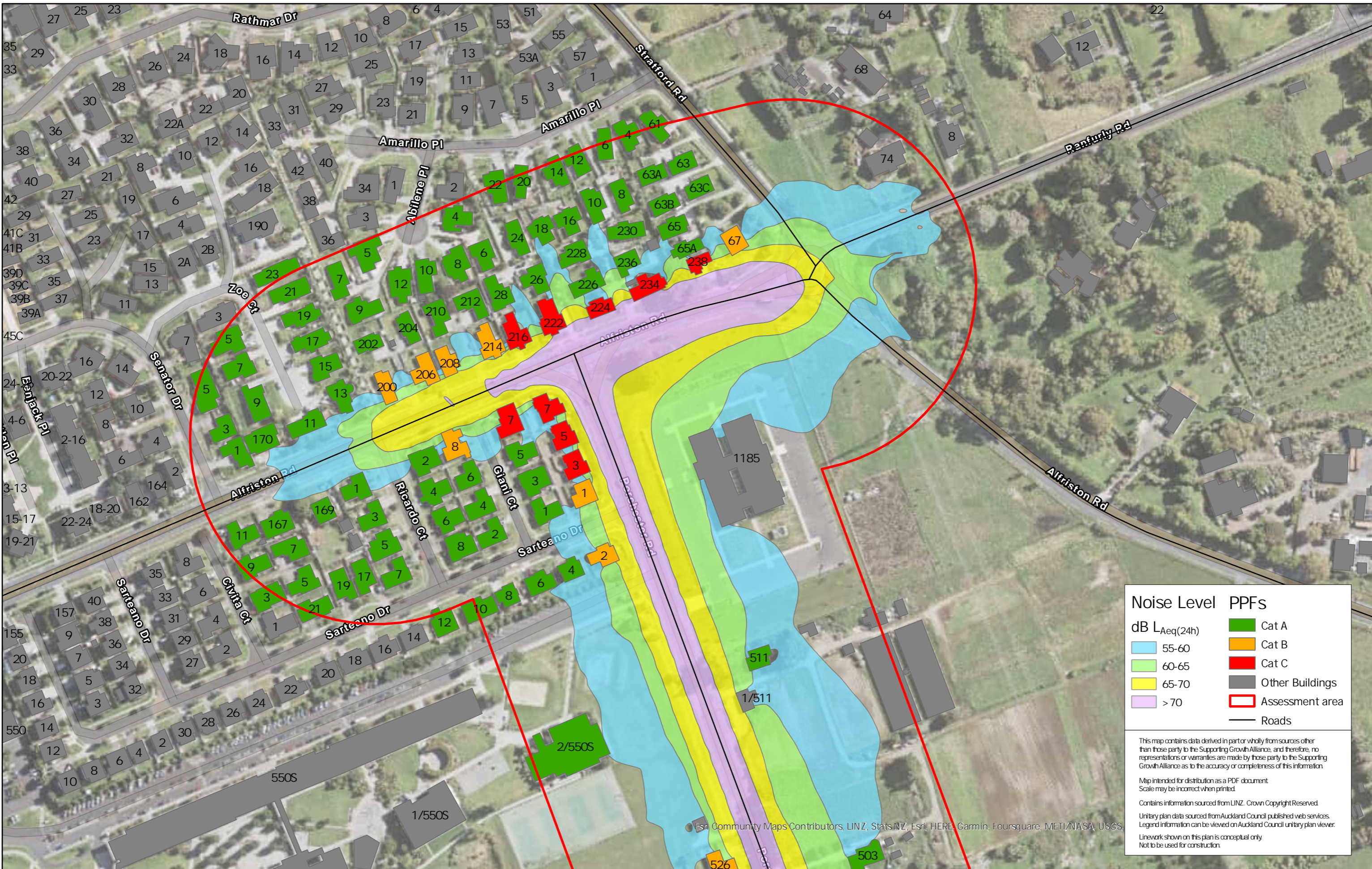
Drawing No: SGA-XX-XX-004





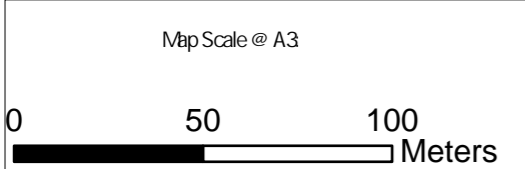


Name: NoR4\_DoNothing(CuIPqesRd) Date Printed: 7/04/2020 8:39AM  
 Path: C:\GIS\SGA\_FTNSGA\_FTIN\_newaprx



Noise Level PPFs	
dB LAeq(24h)	PPFs
55-60	Cat A
60-65	Cat B
65-70	Cat C
> 70	Other Buildings
	Assessment area
	Roads

This map contains data derived in part or wholly from sources other than those party to the Supporting Growth Alliance, and therefore, no representations or warranties are made by those party to the Supporting Growth Alliance as to the accuracy or completeness of this information.  
 Map intended for distribution as a PDF document. Scale may be incorrect when printed.  
 Contains information sourced from LINZ. Crown Copyright Reserved.  
 Unitary plan data sourced from Auckland Council published web services. Legend information can be viewed on Auckland Council unitary plan viewer.  
 Line work shown on this plan is conceptual only. Not to be used for construction.



Revision	Author	Verified	Approved	Date
1	Author	DRAFT	DRAFT	dd/mm/yyyy

**Title:** Supporting Growth  
**NoR 4 - Do-nothing Road Traffic Noise**  
 Working Plans of Te Tupu Ngatahi.  
 For the purpose of INTERNAL workshops (not for wider distribution)

**Client:** Supporting Growth  
**Project:** South FTN Package



**Discipline:** GIS  
**Drawing No:** SGA-XX-XX-004



Date Printed: 7/04/2020 8:39AM  
Name: NoR4\_DoNothing(CuIPapsRd)  
Path: C:\GIS\SGA\_FTINSGA\_FTIN\_newaprx



<b>Noise Level PPFs</b>	
dB LAeq(24h)	Cat A
55-60	Cat B
60-65	Cat C
65-70	Other Buildings
> 70	Assessment area
	Roads

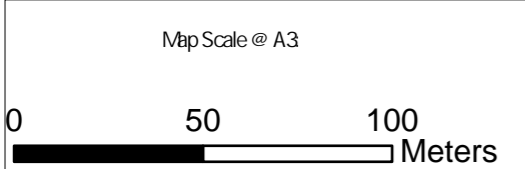
This map contains data derived in part or wholly from sources other than those party to the Supporting Growth Alliance, and therefore, no representations or warranties are made by those party to the Supporting Growth Alliance as to the accuracy or completeness of this information.

Map intended for distribution as a PDF document.  
Scale may be incorrect when printed.

Contains information sourced from LINZ. Crown Copyright Reserved.

Unitary plan data sourced from Auckland Council published web services.  
Legend information can be viewed on Auckland Council unitary plan viewer.

Line work shown on this plan is conceptual only.  
Not to be used for construction.



Revision	Author	Verified	Approved	Date	Title
1	Author	DRAFT	DRAFT	dd/mm/yyyy	

## Supporting Growth

### NoR 4 - Do-nothing Road Traffic Noise

Working Plans of Te Tupu Ngatahi.  
For the purpose of INTERNAL workshops (not for wider distribution)

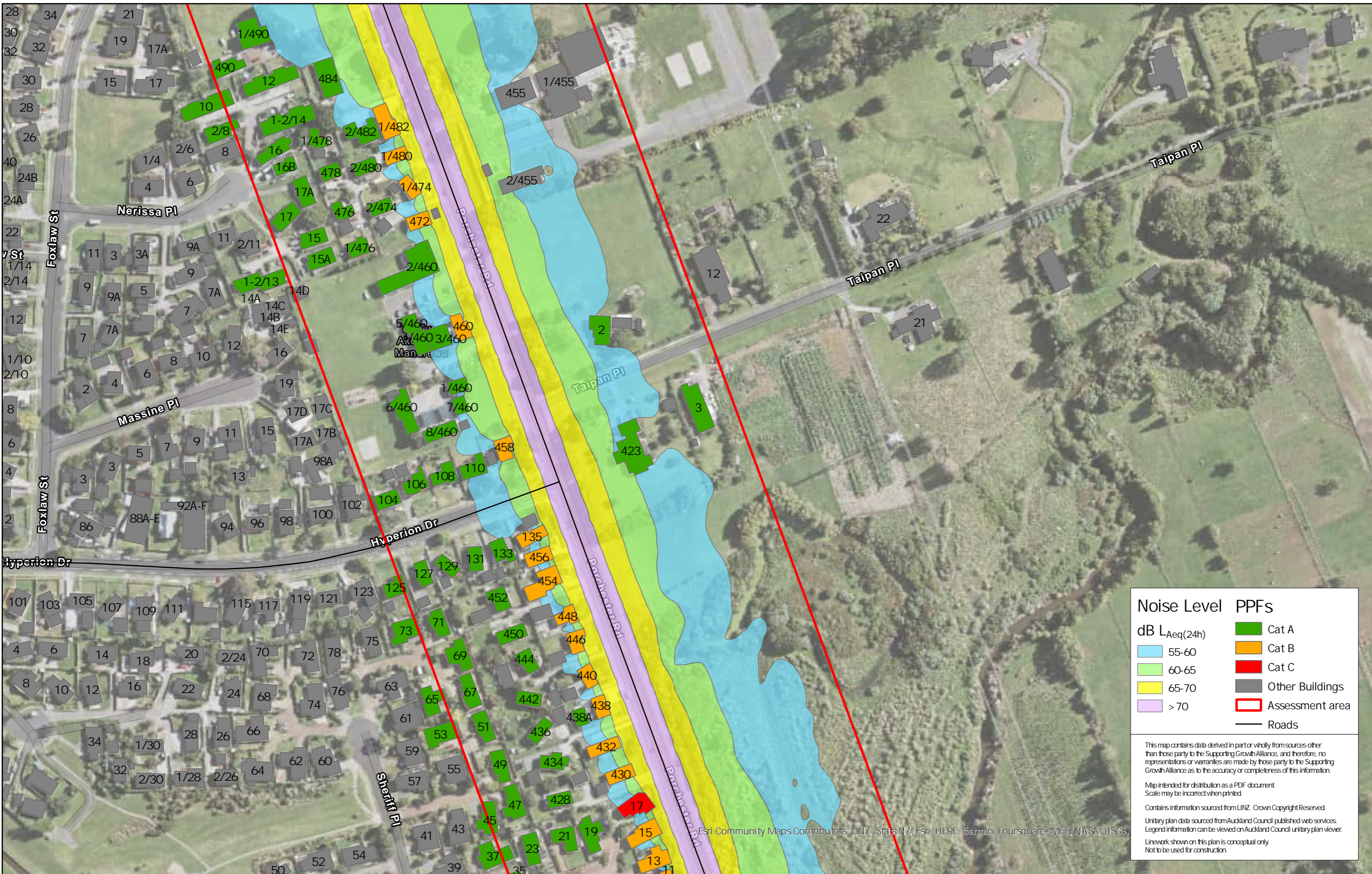
Client	Supporting Growth
Project	South FTN Package



Discipline:	GIS
Drawing No:	SGA-XX-XX-004



Name: NoR4\_DoNothing(CurPapesRd) Date Printed: 7/04/2020 8:39AM  
 Path: C:\GIS\SGA\_FTNSGA\_FTIN\_newaprx



Noise Level PPFs	
dB LAeq(24h)	Cat A
55-60	Cat B
60-65	Cat C
65-70	Other Buildings
> 70	Assessment area
	Roads

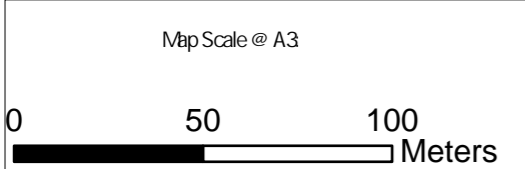
This map contains data derived in part or wholly from sources other than those party to the Supporting Growth Alliance, and therefore, no representations or warranties are made by those party to the Supporting Growth Alliance as to the accuracy or completeness of this information.

Map intended for distribution as a PDF document. Scale may be incorrect when printed.

Contains information sourced from LINZ. Crown Copyright Reserved.

Unitary plan data sourced from Auckland Council published web services. Legend information can be viewed on Auckland Council unitary plan viewer.

Linework shown on this plan is conceptual only. Not to be used for construction.



Revision	Author	Verified	Approved	Date	Title
1	Author	DRAFT	DRAFT	dd/mm/yyyy	

**Supporting Growth**  
**NoR 4 - Do-nothing Road Traffic Noise**

Working Plans of Te Tupu Ngatahi.  
 For the purpose of INTERNAL workshops (not for wider distribution)

Client: Supporting Growth  
 Project: South FTN Package



Discipline: GIS  
 Drawing No: SGA-XX-XX-004





**Noise Level PPFs**

dB L <sub>Aeq</sub> (24h)	Cat A
55-60	Cat B
60-65	Cat C
65-70	Other Buildings
> 70	Assessment area
	Roads

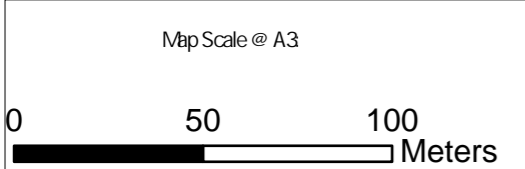
This map contains data derived in part or wholly from sources other than those party to the Supporting Growth Alliance, and therefore, no representations or warranties are made by those party to the Supporting Growth Alliance as to the accuracy or completeness of this information.

Map intended for distribution as a PDF document  
Scale may be incorrect when printed.

Contains information sourced from LINZ. Crown Copyright Reserved.

Unitary plan data sourced from Auckland Council published web services.  
Legend information can be viewed on Auckland Council unitary plan viewer.

Linework shown on this plan is conceptual only.  
Not to be used for construction.



Revision	Author	Verified	Approved	Date
1	Author	DRAFT	DRAFT	dd/mm/yyyy

**Supporting Growth**  
**NoR 4 - Do-nothing Road Traffic Noise**

Working Plans of Te Tupu Ngatahi.  
 For the purpose of INTERNAL workshops (not for wider distribution)

Client: Supporting Growth

Project: South FTN Package



Discipline: GIS

Drawing No: SGA-XX-XX-004



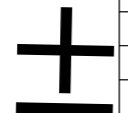
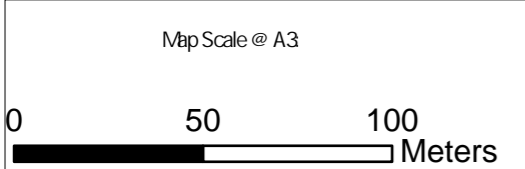
Name: NoR4\_DoNothing(CurPopesRd) Date Printed: 7/04/2020 8:39 AM  
 Path: C:\GIS\SGA\_FTNSGA\_FTIN\_newaprx



Noise Level PPFs	
dB $L_{Aeq}(24h)$	Cat A
55-60	Cat B
60-65	Cat C
65-70	Other Buildings
> 70	Assessment area
	Roads

This map contains data derived in part or wholly from sources other than those party to the Supporting Growth Alliance, and therefore, no representations or warranties are made by those party to the Supporting Growth Alliance as to the accuracy or completeness of this information.  
 Map intended for distribution as a PDF document. Scale may be incorrect when printed.  
 Contains information sourced from LINZ. Crown Copyright Reserved.  
 Unitary plan data sourced from Auckland Council published web services. Legend information can be viewed on Auckland Council unitary plan viewer.  
 Line work shown on this plan is conceptual only. Not to be used for construction.

Esri Community Maps Contributors, LINZ, Stats NZ, Esri, HERE, Garmin, Foursquare, METI/NASA, USGS



Revision	Author	Verified	Approved	Date
1	Author	DRAFT	DRAFT	dd/mm/yyyy

**Title:** Supporting Growth  
**NoR 4 - Do-nothing Road Traffic Noise**  
 Working Plans of Te Tupu Ngatahi.  
 For the purpose of INTERNAL workshops (not for wider distribution)

**Client:** Supporting Growth  
**Project:** South FTN Package



**Discipline:** GIS  
**Drawing No:** SGA-XX-XX-004



Date Printed: 7/04/2020 8:39AM

Name: NoR4\_DoNothing(C:\p\papesRd)

Path: C:\GIS\SGA\_FTNSGA\_FTIN\_new\aprx



Noise Level PPFs	
dB LAeq(24h)	Cat A
55-60	Cat B
60-65	Cat C
65-70	Other Buildings
> 70	Assessment area
	Roads

This map contains data derived in part or wholly from sources other than those party to the Supporting Growth Alliance, and therefore, no representations or warranties are made by those party to the Supporting Growth Alliance as to the accuracy or completeness of this information.

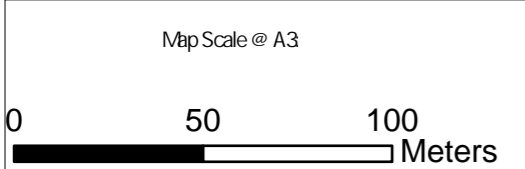
Map intended for distribution as a PDF document  
Scale may be incorrect when printed.

Contains information sourced from LINZ. Crown Copyright Reserved.

Unitary plan data sourced from Auckland Council published web services.  
Legend information can be viewed on Auckland Council unitary plan viewer.

Linework shown on this plan is conceptual only.  
Not to be used for construction.

Esri, Community Maps Contributors, LINZ, Stats NZ, Esri, HERE, Garmin, Foursquare, METI/NASA, USGS



Revision	Author	Verified	Approved	Date
1	Author	DRAFT	DRAFT	dd/mm/yyyy

**Supporting Growth**  
**NoR 4 - Do-nothing Road Traffic Noise**

Working Plans of Te Tupu Ngatahi.  
 For the purpose of INTERNAL workshops (not for wider distribution)

Client: Supporting Growth

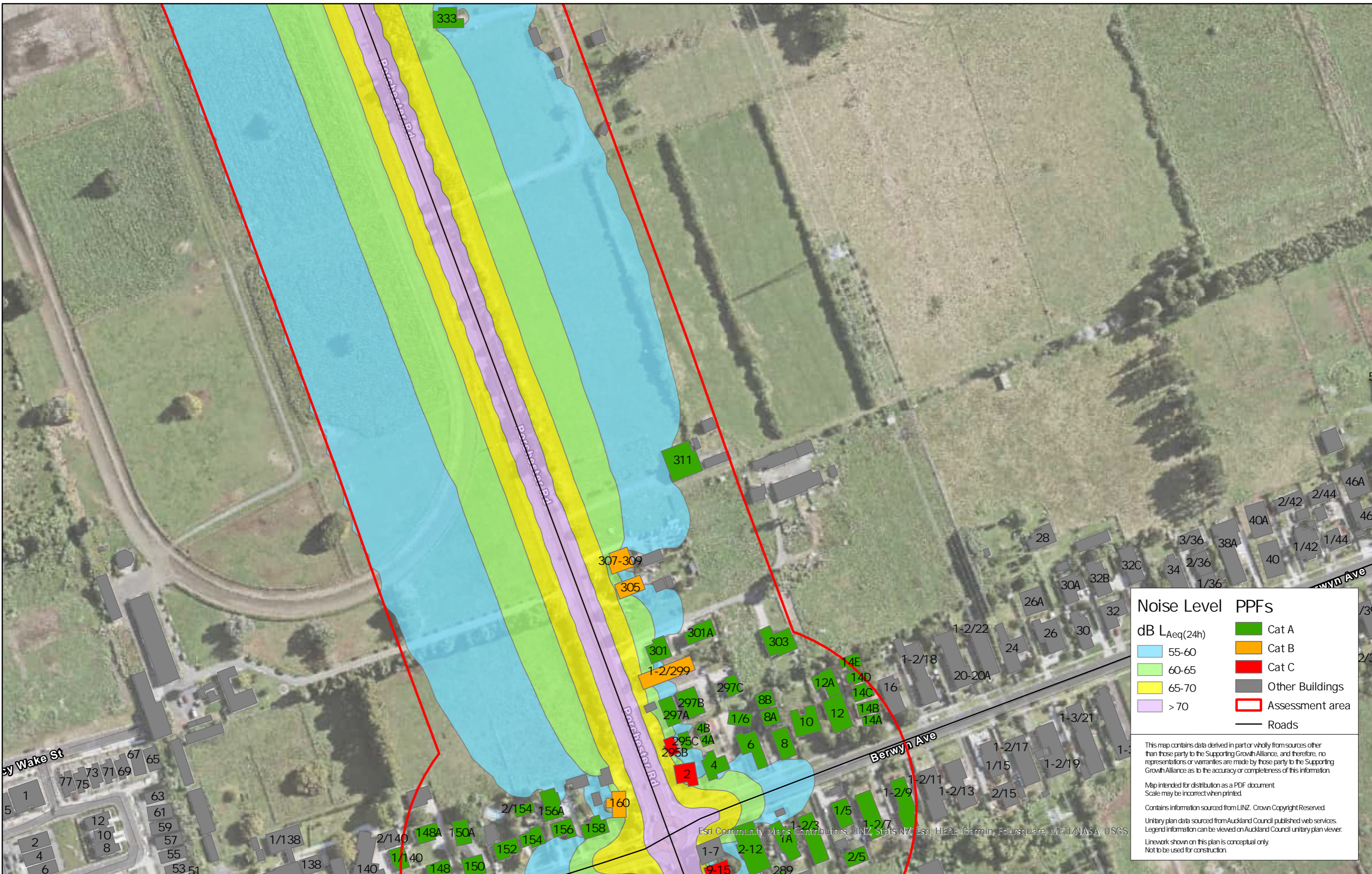
Project: South FTN Package



Discipline: GIS

Drawing No: SGA-XX-XX-004





Noise Level PPFs	
dB LAeq(24h)	Cat A
55-60	Cat B
60-65	Cat C
65-70	Other Buildings
> 70	Assessment area
	Roads

This map contains data derived in part or wholly from sources other than those party to the Supporting Growth Alliance, and therefore, no representations or warranties are made by those party to the Supporting Growth Alliance as to the accuracy or completeness of this information.

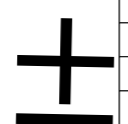
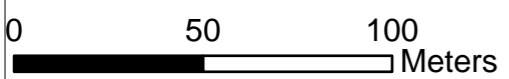
Map intended for distribution as a PDF document. Scale may be incorrect when printed.

Contains information sourced from LINZ. Crown Copyright Reserved.

Unitary plan data sourced from Auckland Council published web services. Legend information can be viewed on Auckland Council unitary plan viewer.

Line work shown on this plan is conceptual only. Not to be used for construction.

Map Scale @ A3



Revision	Author	Verified	Approved	Date
1	Author	DRAFT	DRAFT	dd/mm/yyyy

Title: Supporting Growth  
NoR 4 - Do-nothing Road Traffic Noise

Working Plans of Te Tupu Ngatahi.  
For the purpose of INTERNAL workshops (not for wider distribution)

Client	Supporting Growth
Project	South FTN Package



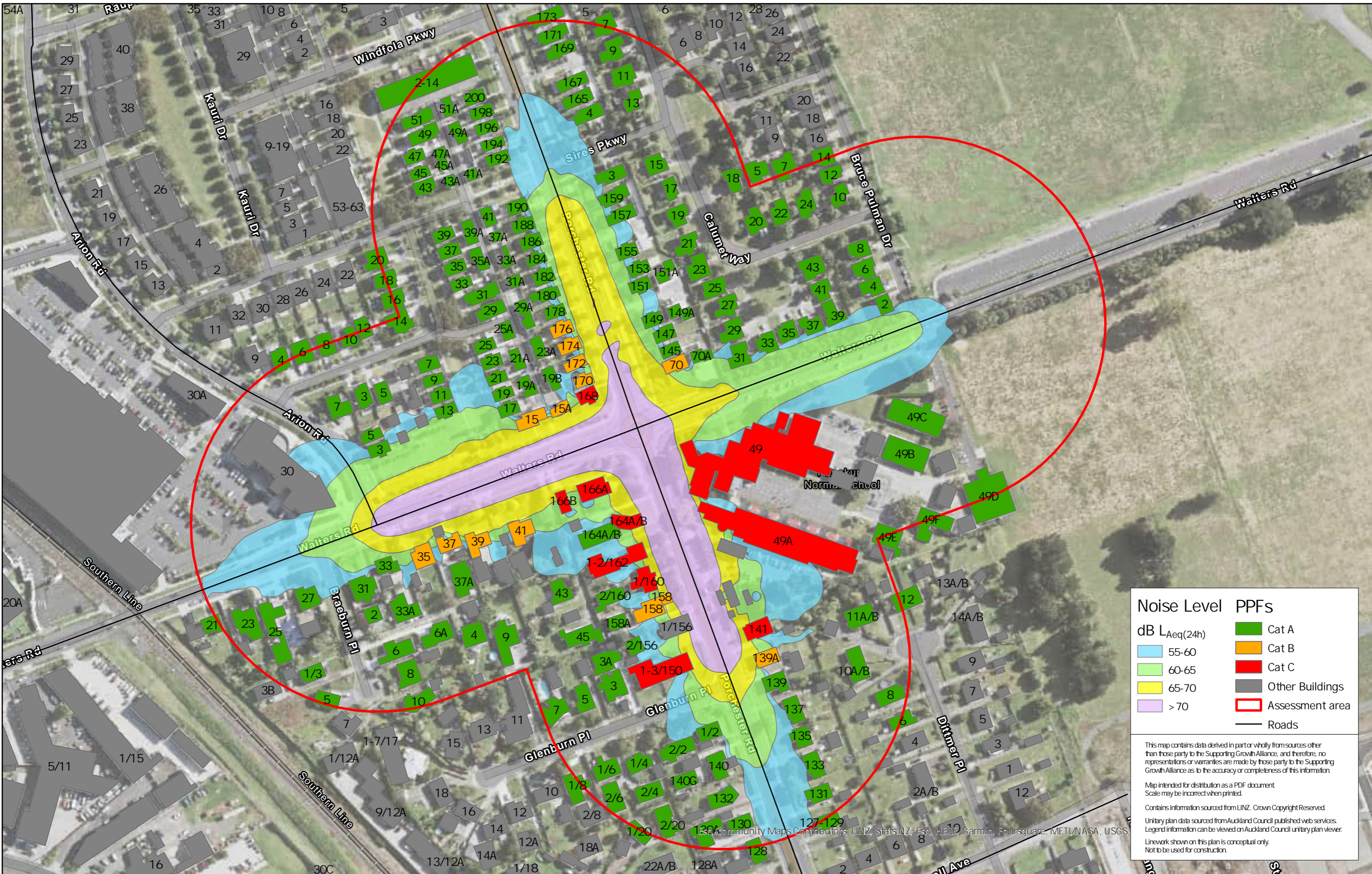
Discipline:	GIS
Drawing No:	SGA-XX-XX-004







Name: NoR4\_DoNothing(CuIPapeSrd) Date Printed: 7/04/2020 8:39AM  
 Path: C:\GIS\SGA\_FTNSGA\_FTIN\_newaprx



Noise Level PPFs	
dB LAeq(24h)	PPFs
55-60	Cat A
60-65	Cat B
65-70	Cat C
> 70	Other Buildings
	Assessment area
	Roads

This map contains data derived in part or wholly from sources other than those party to the Supporting Growth Alliance, and therefore, no representations or warranties are made by those party to the Supporting Growth Alliance as to the accuracy or completeness of this information.  
 Map intended for distribution as a PDF document. Scale may be incorrect when printed.  
 Contains information sourced from LINZ. Crown Copyright Reserved.  
 Unitary plan data sourced from Auckland Council published web services. Legend information can be viewed on Auckland Council unitary plan viewer.  
 Line work shown on this plan is conceptual only. Not to be used for construction.

Map Scale @ A3 		Revision Author Verified Approved Date	Title: <b>Supporting Growth</b> <b>NoR 4 - Do-nothing Road Traffic Noise</b> Working Plans of Te Tupu Ngatahi. For the purpose of INTERNAL workshops (not for wider distribution)		Client Supporting Growth		Discipline: GIS
		1 Author DRAFT DRAFT dd/mm/yyyy	Project South FTN Package	Drawing No: SGA-XX-XX-004			

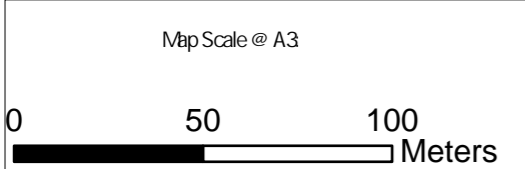


Name: NoR4\_DoMin(CurPopesRd) Date Printed: 7/04/2020 8:39AM  
 Path: C:\GIS\SGA\_FTNSGA\_FTIN\_newaprx



Noise Level	PPFs
dB L <sub>Aeq(24h)</sub>	Cat A
55-60	Cat B
60-65	Cat C
65-70	Other Buildings
> 70	Assessment area
	Roads

This map contains data derived in part or wholly from sources other than those party to the Supporting Growth Alliance, and therefore, no representations or warranties are made by those party to the Supporting Growth Alliance as to the accuracy or completeness of this information.  
 Map intended for distribution as a PDF document. Scale may be incorrect when printed.  
 Contains information sourced from LINZ. Crown Copyright Reserved.  
 Unitary plan data sourced from Auckland Council published web services. Legend information can be viewed on Auckland Council unitary plan viewer.  
 Line work shown on this plan is conceptual only. Not to be used for construction.



Revision	Author	Verified	Approved	Date
1	Author	DRAFT	DRAFT	dd/mm/yyyy

**Supporting Growth**  
**NoR 4 - Do Minimum Road Traffic Noise**  
 Working Plans of Te Tupu Ngatahi.  
 For the purpose of INTERNAL workshops (not for wider distribution)

Client: Supporting Growth  
 Project: South FTN Package



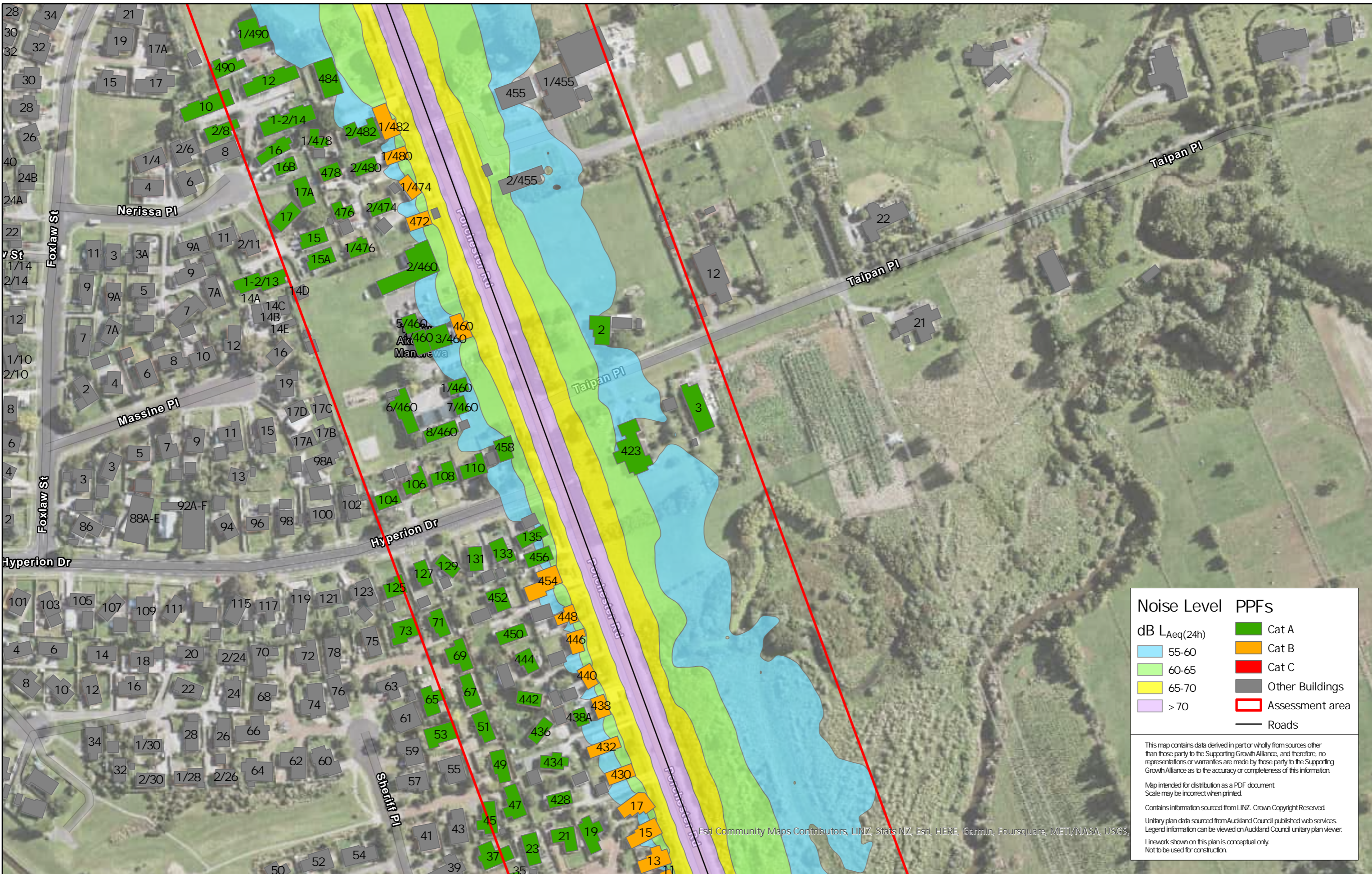
Discipline: GIS  
 Drawing No: SGA-XX-XX-004





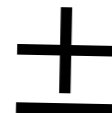
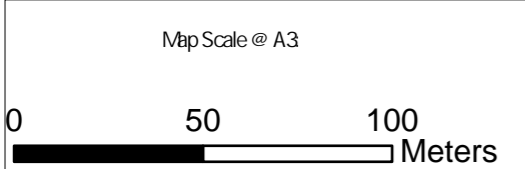


Name: NoR4\_DoMin(CurFopsRd) Date Printed: 7/04/2020 8:39AM  
 Path: C:\GIS\SGA\_FTNSGA\_FTIN\_newaprx



Noise Level PPFs	
dB LAeq(24h)	Cat A
55-60	Cat B
60-65	Cat C
65-70	Other Buildings
> 70	Assessment area
	Roads

This map contains data derived in part or wholly from sources other than those party to the Supporting Growth Alliance, and therefore, no representations or warranties are made by those party to the Supporting Growth Alliance as to the accuracy or completeness of this information.  
 Map intended for distribution as a PDF document. Scale may be incorrect when printed.  
 Contains information sourced from LINZ. Crown Copyright Reserved.  
 Unitary plan data sourced from Auckland Council published web services. Legend information can be viewed on Auckland Council unitary plan viewer.  
 Esri Community Maps Contributors, LINZ, Stats NZ, Esri, HERE, Garmin, Foursquare, METI/NASA, USGS.  
 Linework shown on this plan is conceptual only. Not to be used for construction.



Revision	Author	Verified	Approved	Date	Title
1	Author	DRAFT	DRAFT	dd/mm/yyyy	

**Supporting Growth**  
**NoR 4 - Do Minimum Road Traffic Noise**  
 Working Plans of Te Tupu Ngatahi.  
 For the purpose of INTERNAL workshops (not for wider distribution)

Client	Supporting Growth
Project	South FTN Package



Discipline: GIS  
 Drawing No: SGA-XX-XX-004





**Noise Level PPFs**

dB L <sub>Aeq</sub> (24h)	Cat A
55-60	Cat B
60-65	Cat C
65-70	Other Buildings
> 70	Assessment area
	Roads

This map contains data derived in part or wholly from sources other than those party to the Supporting Growth Alliance, and therefore, no representations or warranties are made by those party to the Supporting Growth Alliance as to the accuracy or completeness of this information.

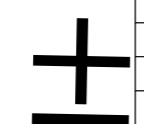
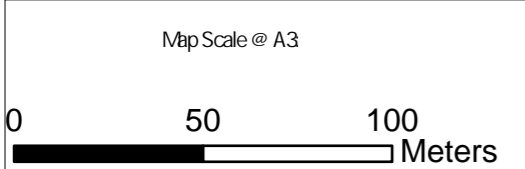
Map intended for distribution as a PDF document  
Scale may be incorrect when printed.

Contains information sourced from LINZ. Crown Copyright Reserved.

Unitary plan data sourced from Auckland Council published web services.  
Legend information can be viewed on Auckland Council unitary plan viewer.

Linework shown on this plan is conceptual only.  
Not to be used for construction.

Esri Community Maps Contributors, LINZ, Stats NZ, Esri, HERE, Garmin, Foursquare, METI/NASA, USGS.



Revision	Author	Verified	Approved	Date
1	Author	DRAFT	DRAFT	dd/mm/yyyy

**Title:** Supporting Growth  
NoR 4 - Do Minimum Road Traffic Noise

Working Plans of Te Tupu Ngatahi.  
For the purpose of INTERNAL workshops (not for wider distribution)

**Client:** Supporting Growth

**Project:** South FTN Package



**Discipline:** GIS

**Drawing No:** SGA-XX-XX-004



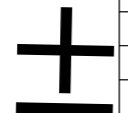
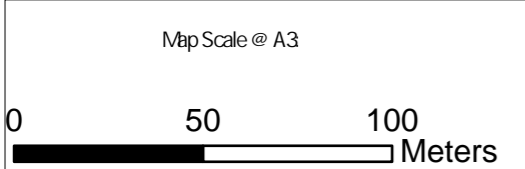
Name: NoR4\_DoMin(CurPopesRd) Date Printed: 7/04/2020 8:39AM  
 Path: C:\GIS\SGA\_FTNSGA\_FTIN\_new\aprx



Noise Level PPFs	
dB LAeq(24h)	
55-60	Cat A
60-65	Cat B
65-70	Cat C
> 70	Other Buildings
	Assessment area
	Roads

This map contains data derived in part or wholly from sources other than those party to the Supporting Growth Alliance, and therefore, no representations or warranties are made by those party to the Supporting Growth Alliance as to the accuracy or completeness of this information.  
 Map intended for distribution as a PDF document. Scale may be incorrect when printed.  
 Contains information sourced from LINZ. Crown Copyright Reserved.  
 Unitary plan data sourced from Auckland Council published web services. Legend information can be viewed on Auckland Council unitary plan viewer.  
 Line work shown on this plan is conceptual only. Not to be used for construction.

Esri Community Maps Contributors, LINZ, Stats NZ, Esri, HERE, Garmin, Foursquare, METI/NASA, USGS



Revision	Author	Verified	Approved	Date
1	Author	DRAFT	DRAFT	dd/mm/yyyy

**Title:** Supporting Growth  
**NoR 4 - Do Minimum Road Traffic Noise**  
 Working Plans of Te Tupu Ngatahi.  
 For the purpose of INTERNAL workshops (not for wider distribution)

**Client:** Supporting Growth  
**Project:** South FTN Package



**Discipline:** GIS  
**Drawing No:** SGA-XX-XX-004



Date Printed: 7/04/2020 8:39AM

Name: NoR4\_DoMin(CurPopesRd)

Path: C:\GIS\SGA\_FTNSGA\_FTIN\_new\aprx



Noise Level		PPFs	
dB $L_{Aeq}(24h)$		Cat A	
55-60		Cat B	
60-65		Cat C	
65-70		Other Buildings	
> 70		Assessment area	
		Roads	

This map contains data derived in part or wholly from sources other than those party to the Supporting Growth Alliance, and therefore, no representations or warranties are made by those party to the Supporting Growth Alliance as to the accuracy or completeness of this information.

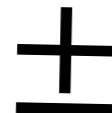
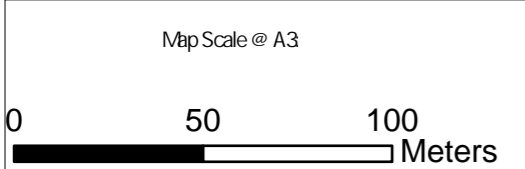
Map intended for distribution as a PDF document  
Scale may be incorrect when printed.

Contains information sourced from LINZ. Crown Copyright Reserved.

Unitary plan data sourced from Auckland Council published web services.  
Legend information can be viewed on Auckland Council unitary plan viewer.

Linework shown on this plan is conceptual only.  
Not to be used for construction.

Esri, Community Maps Contributors, LINZ, Stats NZ, Esri, HERE, Garmin, Foursquare, METI/NASA, USGS



Revision	Author	Verified	Approved	Date
1	Author	DRAFT	DRAFT	dd/mm/yyyy

Title: **Supporting Growth**  
**NoR 4 - Do Minimum Road Traffic Noise**

Working Plans of Te Tupu Ngatahi.  
 For the purpose of INTERNAL workshops (not for wider distribution)

Client: Supporting Growth

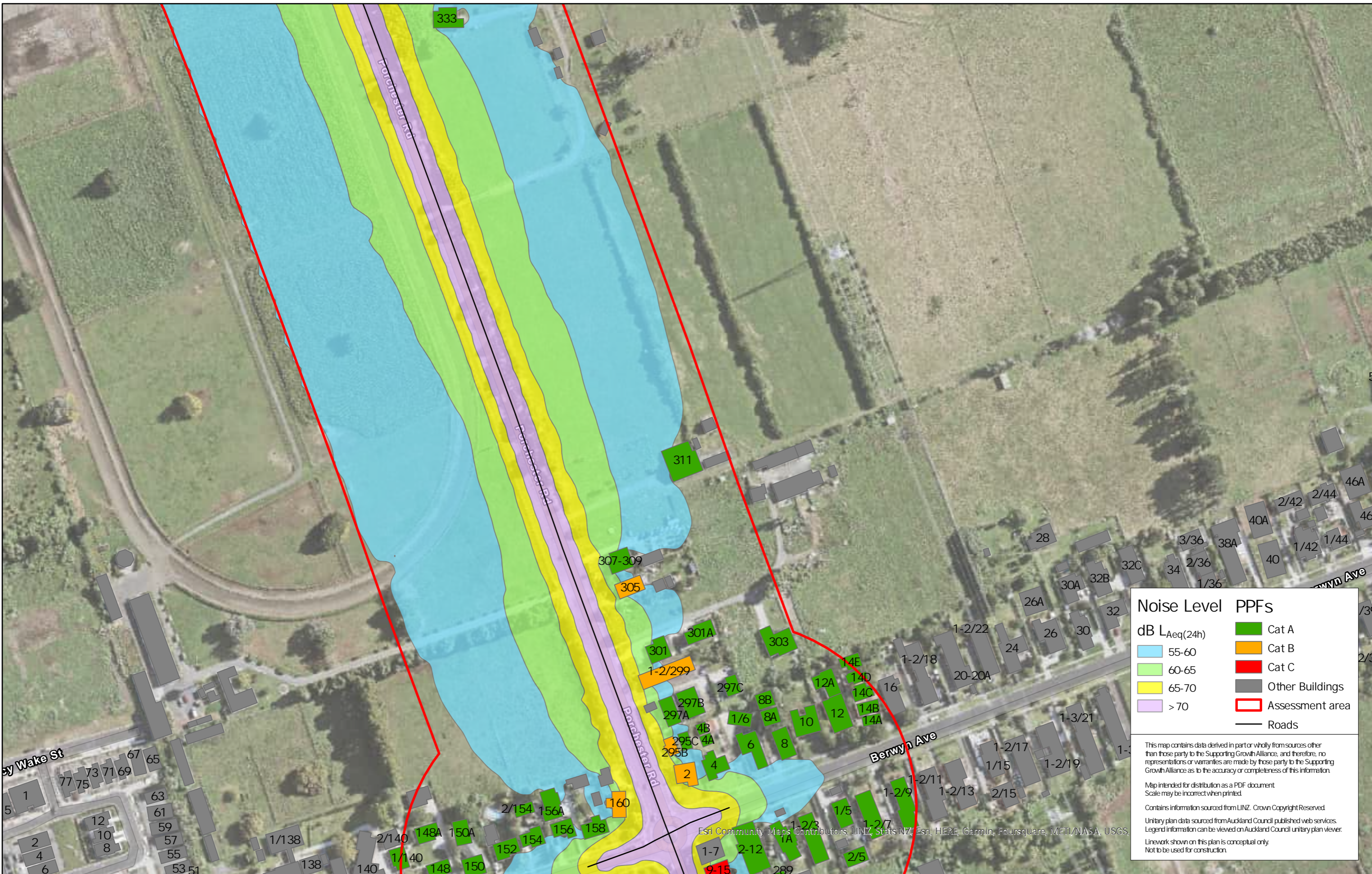
Project: South FTN Package



Discipline: GIS

Drawing No: SGA-XX-XX-004





**Noise Level PPFs**

dB L <sub>Aeq(24h)</sub>	Cat A
55-60	Cat B
60-65	Cat C
65-70	Other Buildings
> 70	Assessment area
	Roads

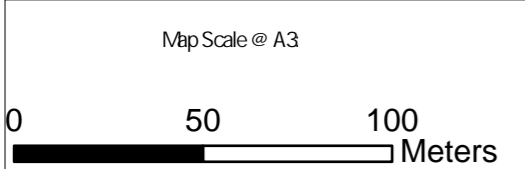
This map contains data derived in part or wholly from sources other than those party to the Supporting Growth Alliance, and therefore, no representations or warranties are made by those party to the Supporting Growth Alliance as to the accuracy or completeness of this information.

Map intended for distribution as a PDF document  
Scale may be incorrect when printed.

Contains information sourced from LINZ. Crown Copyright Reserved.

Unitary plan data sourced from Auckland Council published web services.  
Legend information can be viewed on Auckland Council unitary plan viewer.

Line work shown on this plan is conceptual only.  
Not to be used for construction.



Revision	Author	Verified	Approved	Date
1	Author	DRAFT	DRAFT	dd/mm/yyyy

**Supporting Growth**  
**NoR 4 - Do Minimum Road Traffic Noise**

Working Plans of Te Tupu Ngatahi.  
 For the purpose of INTERNAL workshops (not for wider distribution)

Client: Supporting Growth

Project: South FTN Package



Discipline: GIS

Drawing No: SGA-XX-XX-004









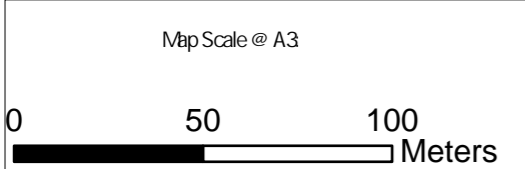


Date Printed: 7/04/2020 8:39AM  
 Name: NoR4\_Mit1(CuP)PopesRd  
 Path: C:\GIS\SGA\_FTNSGA\_FTIN\_new\aprx



Noise Level PPFs	
dB LAeq(24h)	
55-60	Cat A
60-65	Cat B
65-70	Cat C
> 70	Other Buildings
	Assessment area
	Roads

This map contains data derived in part or wholly from sources other than those party to the Supporting Growth Alliance, and therefore, no representations or warranties are made by those party to the Supporting Growth Alliance as to the accuracy or completeness of this information.  
 Map intended for distribution as a PDF document. Scale may be incorrect when printed.  
 Contains information sourced from LINZ. Crown Copyright Reserved.  
 Unitary plan data sourced from Auckland Council published web services. Legend information can be viewed on Auckland Council unitary plan viewer.  
 Line work shown on this plan is conceptual only. Not to be used for construction.



Revision	Author	Verified	Approved	Date
1	Author	DRAFT	DRAFT	dd/mm/yyyy

**Title:** Supporting Growth  
**NoR 4 - Mitigation 1 Road Traffic Noise**  
 Working Plans of Te Tupu Ngatahi.  
 For the purpose of INTERNAL workshops (not for wider distribution)

**Client:** Supporting Growth  
**Project:** South FTN Package



**Discipline:** GIS  
**Drawing No:** SGA-XX-XX-004



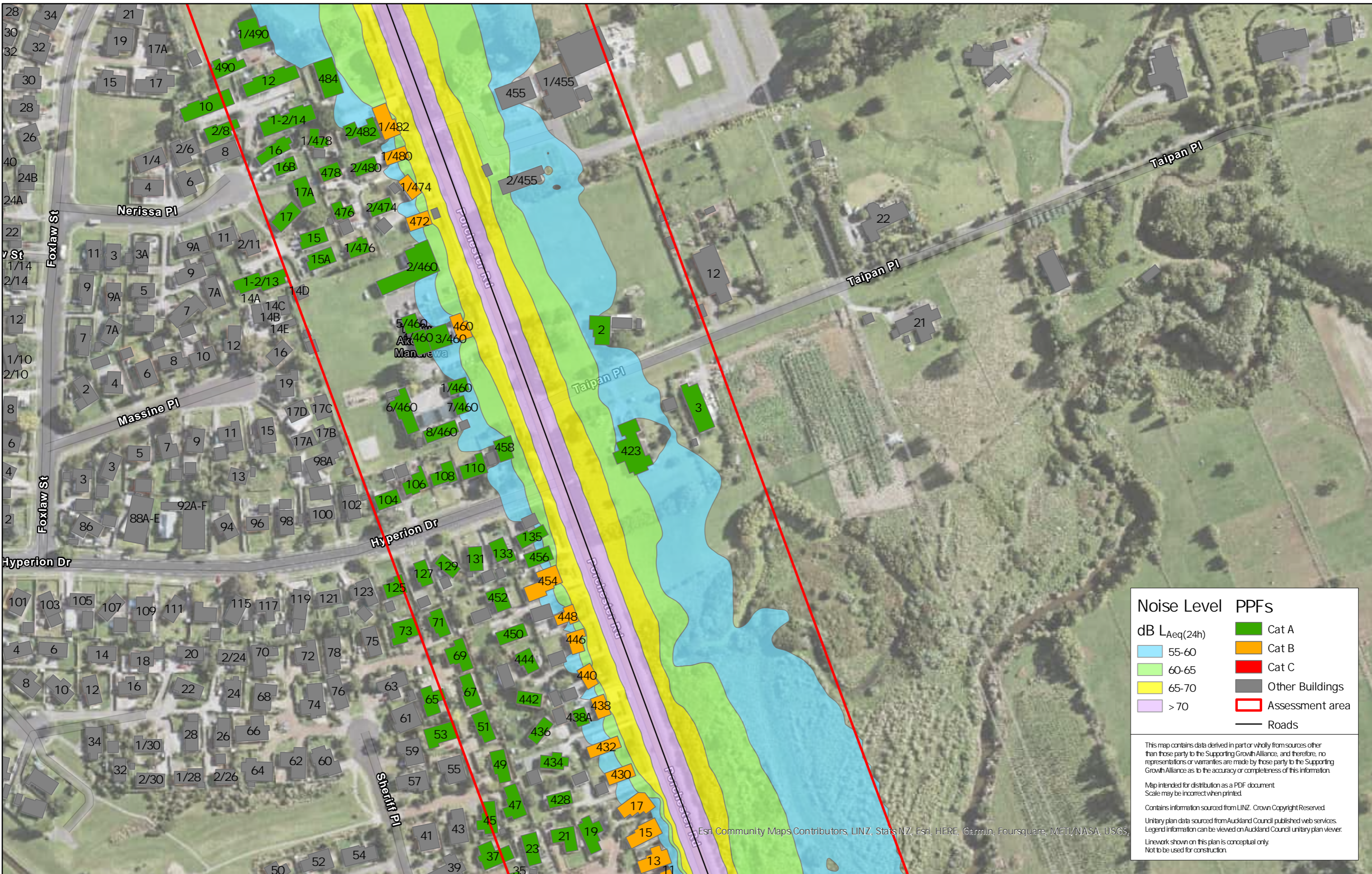




Date Printed: 7/04/2020 8:39AM

Name: NoR4\_Mit1(CuP)PopesRd

Path: C:\GIS\SGA\_FTNSGA\_FTIN\_newaprx



Noise Level PPFs	
dB LAeq(24h)	Cat A
55-60	Cat B
60-65	Cat C
65-70	Other Buildings
> 70	Assessment area
	Roads

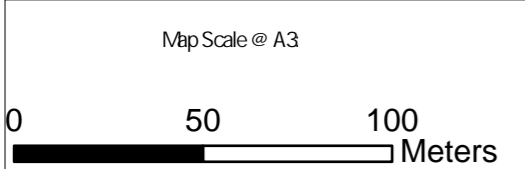
This map contains data derived in part or wholly from sources other than those party to the Supporting Growth Alliance, and therefore, no representations or warranties are made by those party to the Supporting Growth Alliance as to the accuracy or completeness of this information.

Map intended for distribution as a PDF document  
Scale may be incorrect when printed.

Contains information sourced from LINZ. Crown Copyright Reserved.

Unitary plan data sourced from Auckland Council published web services.  
Legend information can be viewed on Auckland Council unitary plan viewer.

Line work shown on this plan is conceptual only.  
Not to be used for construction.



Revision	Author	Verified	Approved	Date	Title
1	Author	DRAFT	DRAFT	dd/mm/yyyy	

**Supporting Growth**  
**NoR 4 - Mitigation 1 Road Traffic Noise**  
 Working Plans of Te Tupu Ngatahi.  
 For the purpose of INTERNAL workshops (not for wider distribution)

Client: Supporting Growth

Project: South FTN Package



Discipline: GIS

Drawing No: SGA-XX-XX-004





**Noise Level PPFs**

dB $L_{Aeq}(24h)$	Cat A
55-60	Cat B
60-65	Cat C
65-70	Other Buildings
> 70	Assessment area
	Roads

This map contains data derived in part or wholly from sources other than those party to the Supporting Growth Alliance, and therefore, no representations or warranties are made by those party to the Supporting Growth Alliance as to the accuracy or completeness of this information.

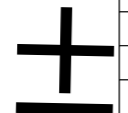
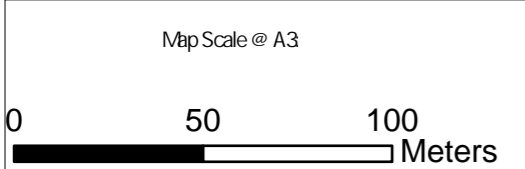
Map intended for distribution as a PDF document  
Scale may be incorrect when printed.

Contains information sourced from LINZ. Crown Copyright Reserved.

Unitary plan data sourced from Auckland Council published web services.  
Legend information can be viewed on Auckland Council unitary plan viewer.

Linework shown on this plan is conceptual only.  
Not to be used for construction.

Esri Community Maps Contributors, LINZ, Stats NZ, Esri, HERE, Garmin, Foursquare, METI/NASA, USGS.



Revision	Author	Verified	Approved	Date
1	Author	DRAFT	DRAFT	dd/mm/yyyy

**Title:** Supporting Growth  
NoR 4 - Mitigation 1 Road Traffic Noise

Working Plans of Te Tupu Ngatahi.  
For the purpose of INTERNAL workshops (not for wider distribution)

**Client:** Supporting Growth

**Project:** South FTN Package



**Discipline:** GIS

**Drawing No:** SGA-XX-XX-004



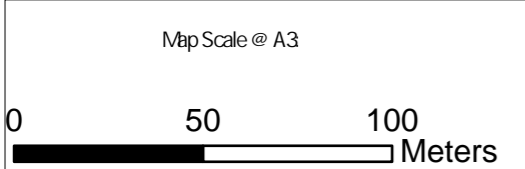
Name: NoR4\_Mit1(CuPopesRd) Date Printed: 7/04/2020 8:39 AM  
 Path: C:\GIS\SGA\_FTNSGA\_FTIN\_new\aprx



Noise Level PPFs	
dB LAeq(24h)	
55-60	Cat A
60-65	Cat B
65-70	Cat C
> 70	Other Buildings
	Assessment area
	Roads

This map contains data derived in part or wholly from sources other than those party to the Supporting Growth Alliance, and therefore, no representations or warranties are made by those party to the Supporting Growth Alliance as to the accuracy or completeness of this information.  
 Map intended for distribution as a PDF document. Scale may be incorrect when printed.  
 Contains information sourced from LINZ. Crown Copyright Reserved.  
 Unitary plan data sourced from Auckland Council published web services. Legend information can be viewed on Auckland Council unitary plan viewer.  
 Line work shown on this plan is conceptual only. Not to be used for construction.

Esri, Community Maps Contributors, LINZ, Stats NZ, Esri, HERE, Garmin, Foursquare, METI/NASA, USGS



Revision	Author	Verified	Approved	Date
1	Author	DRAFT	DRAFT	dd/mm/yyyy

**Title:** Supporting Growth  
**NoR 4 - Mitigation 1 Road Traffic Noise**  
 Working Plans of Te Tupu Ngatahi.  
 For the purpose of INTERNAL workshops (not for wider distribution)

**Client:** Supporting Growth  
**Project:** South FTN Package



**Discipline:** GIS  
**Drawing No:** SGA-XX-XX-004



Date Printed: 7/04/2020 8:39AM

Name: NoR\_4\_Mit1(CuPopesRd)

Path: C:\GIS\SGA\_FTNSGA\_FTIN\_new\aprx



Noise Level		PPFs	
dB LAeq(24h)			
55-60		Cat A	
60-65		Cat B	
65-70		Cat C	
> 70		Other Buildings	
		Assessment area	
		Roads	

This map contains data derived in part or wholly from sources other than those party to the Supporting Growth Alliance, and therefore, no representations or warranties are made by those party to the Supporting Growth Alliance as to the accuracy or completeness of this information.

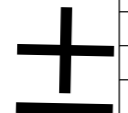
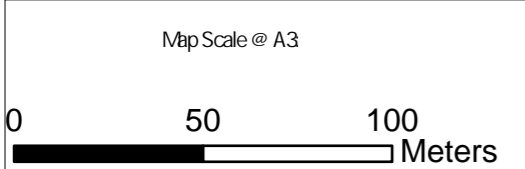
Map intended for distribution as a PDF document  
Scale may be incorrect when printed.

Contains information sourced from LINZ. Crown Copyright Reserved.

Unitary plan data sourced from Auckland Council published web services.  
Legend information can be viewed on Auckland Council unitary plan viewer.

Linework shown on this plan is conceptual only.  
Not to be used for construction.

Esri, Community Maps Contributors, LINZ, Stats NZ, Esri, HERE, Garmin, Foursquare, METI/NASA, USGS



Revision	Author	Verified	Approved	Date
1	Author	DRAFT	DRAFT	dd/mm/yyyy

**Supporting Growth**  
**NoR 4 - Mitigation 1 Road Traffic Noise**

Working Plans of Te Tupu Ngatahi.  
 For the purpose of INTERNAL workshops (not for wider distribution)

Client: Supporting Growth

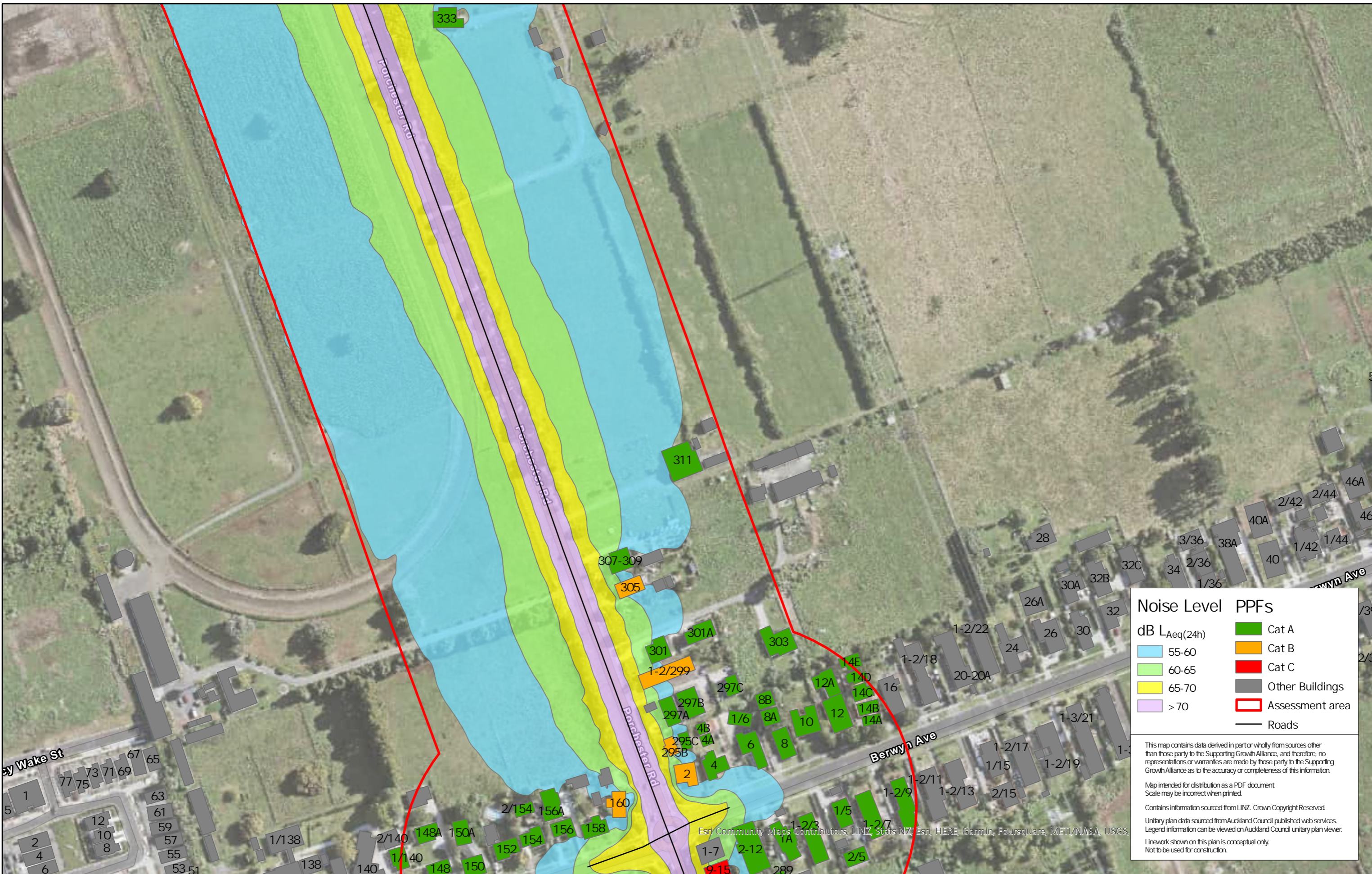
Project: South FTN Package



Discipline: GIS

Drawing No: SGA-XX-XX-004





**Noise Level PPFs**

dB L <sub>Aeq(24h)</sub>	Cat A
55-60	Cat B
60-65	Cat C
65-70	Other Buildings
> 70	Assessment area
	Roads

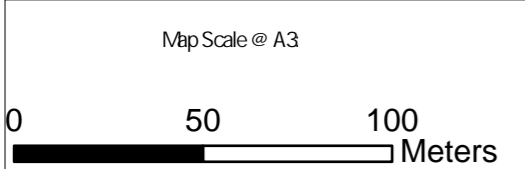
This map contains data derived in part or wholly from sources other than those party to the Supporting Growth Alliance, and therefore, no representations or warranties are made by those party to the Supporting Growth Alliance as to the accuracy or completeness of this information.

Map intended for distribution as a PDF document  
Scale may be incorrect when printed.

Contains information sourced from LINZ. Crown Copyright Reserved.

Unitary plan data sourced from Auckland Council published web services.  
Legend information can be viewed on Auckland Council unitary plan viewer.

Line work shown on this plan is conceptual only.  
Not to be used for construction.



Revision	Author	Verified	Approved	Date
1	Author	DRAFT	DRAFT	dd/mm/yyyy

**Supporting Growth**  
**NoR 4 - Mitigation 1 Road Traffic Noise**

Working Plans of Te Tupu Ngatahi.  
 For the purpose of INTERNAL workshops (not for wider distribution)

Client: Supporting Growth

Project: South FTN Package



Discipline: GIS

Drawing No: SGA-XX-XX-004











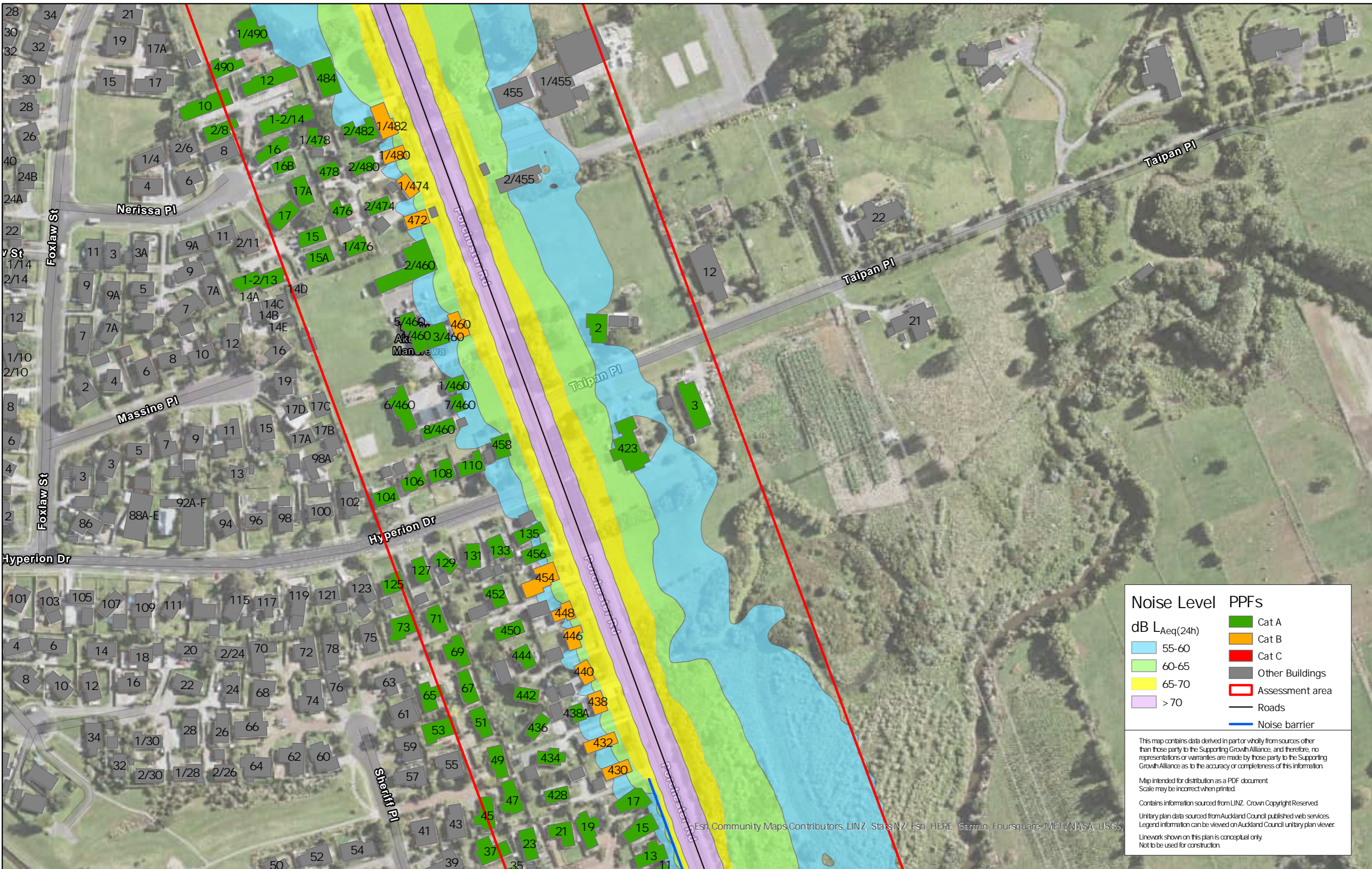








Name: NoR4\_Mit2CuPopesRd  
 Date Printed: 7/04/2020 8:39AM  
 Path: C:\GIS\SGA\_FTNSGA\_FTIN\_newaprx



Noise Level		PPFs	
dB LAeq(24h)		<span style="color: green;">■</span>	Cat A
<span style="color: lightblue;">■</span>	55-60	<span style="color: orange;">■</span>	Cat B
<span style="color: lightgreen;">■</span>	60-65	<span style="color: red;">■</span>	Cat C
<span style="color: yellow;">■</span>	65-70	<span style="color: grey;">■</span>	Other Buildings
<span style="color: purple;">■</span>	> 70	<span style="border: 1px solid red; display: inline-block; width: 10px; height: 10px;"></span>	Assessment area
		<span style="color: black;">—</span>	Roads
		<span style="color: blue;">—</span>	Noise barrier

This map contains data derived in part or wholly from sources other than those party to the Supporting Growth Alliance, and therefore, no representations or warranties are made by those party to the Supporting Growth Alliance as to the accuracy or completeness of this information.  
 Map intended for distribution as a PDF document. Scale may be incorrect when printed.  
 Contains information sourced from LINZ. Crown Copyright Reserved.  
 Unitary plan data sourced from Auckland Council published web services. Legend information can be viewed on Auckland Council unitary plan viewer.  
 Esri, Community Maps Contributors, LINZ, Stats NZ, Esri, HERE, Garmin, Foursquare, METI/NASA, USGS.  
 Linework shown on this plan is conceptual only. Not to be used for construction.

Map Scale @ A3 		<table border="1"> <thead> <tr> <th>Revision</th> <th>Author</th> <th>Verified</th> <th>Approved</th> <th>Date</th> </tr> </thead> <tbody> <tr> <td>1</td> <td>Author</td> <td>DRAFT</td> <td>DRAFT</td> <td>dd/mm/yyyy</td> </tr> </tbody> </table>	Revision	Author	Verified	Approved	Date	1	Author	DRAFT	DRAFT	dd/mm/yyyy	<h3>Supporting Growth</h3> <h2>NoR 4 - Mitigation 2 Road Traffic Noise</h2> <p>Working Plans of Te Tupu Ngatahi. For the purpose of INTERNAL workshops (not for wider distribution)</p>	Client: Supporting Growth Project: South FTN Package	<p><b>TE TUPU NGĀTAHI</b> Supporting Growth</p>	Discipline: GIS Drawing No: SGA-XX-XX-004
Revision	Author	Verified	Approved	Date												
1	Author	DRAFT	DRAFT	dd/mm/yyyy												





**Noise Level PPFs**

dB L <sub>Aeq(24h)</sub>	PPFs
55-60	Cat A
60-65	Cat B
65-70	Cat C
> 70	Other Buildings
	Assessment area
	Roads
	Noise barrier

This map contains data derived in part or wholly from sources other than those party to the Supporting Growth Alliance, and therefore, no representations or warranties are made by those party to the Supporting Growth Alliance as to the accuracy or completeness of this information.

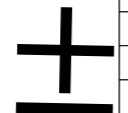
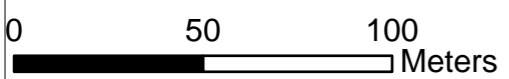
Map intended for distribution as a PDF document  
Scale may be incorrect when printed.

Contains information sourced from LINZ. Crown Copyright Reserved.

Unitary plan data sourced from Auckland Council published web services.  
Legend information can be viewed on Auckland Council unitary plan viewer.

Linework shown on this plan is conceptual only.  
Not to be used for construction.

Map Scale @ A3



Revision	Author	Verified	Approved	Date
1	Author	DRAFT	DRAFT	dd/mm/yyyy

**Title:** Supporting Growth  
NoR 4 - Mitigation 2 Road Traffic Noise

Working Plans of Te Tupu Ngatahi.  
For the purpose of INTERNAL workshops (not for wider distribution)

**Client:** Supporting Growth

**Project:** South FTN Package



**Discipline:** GIS

**Drawing No:** SGA-XX-XX-004



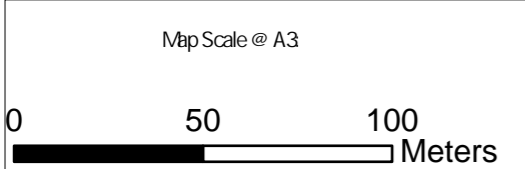
Date Printed: 7/04/2020 8:39 AM  
 Name: NoR4\_Mit2(CuPopesRd)  
 Path: C:\GIS\SGA\_FTNSGA\_FTIN\_new\aprx



Noise Level	PPFs
dB L <sub>Aeq(24h)</sub>	<span style="color: green;">■</span> Cat A
<span style="color: lightblue;">■</span> 55-60	<span style="color: orange;">■</span> Cat B
<span style="color: lightgreen;">■</span> 60-65	<span style="color: red;">■</span> Cat C
<span style="color: yellow;">■</span> 65-70	<span style="color: grey;">■</span> Other Buildings
<span style="color: purple;">■</span> > 70	<span style="border: 1px solid red; display: inline-block; width: 10px; height: 10px;"></span> Assessment area
	<span style="color: black;">—</span> Roads
	<span style="color: blue;">—</span> Noise barrier

This map contains data derived in part or wholly from sources other than those party to the Supporting Growth Alliance, and therefore, no representations or warranties are made by those party to the Supporting Growth Alliance as to the accuracy or completeness of this information.  
 Map intended for distribution as a PDF document. Scale may be incorrect when printed.  
 Contains information sourced from LINZ. Crown Copyright Reserved.  
 Unitary plan data sourced from Auckland Council published web services. Legend information can be viewed on Auckland Council unitary plan viewer.  
 Linework shown on this plan is conceptual only. Not to be used for construction.

Esri Community Maps Contributors, LINZ, Stats NZ, Esri, HERE, Garmin, Foursquare, METI/NASA, USGS



Revision	Author	Verified	Approved	Date
1	Author	DRAFT	DRAFT	dd/mm/yyyy

**Supporting Growth**  
**NoR 4 - Mitigation 2 Road Traffic Noise**  
 Working Plans of Te Tupu Ngatahi.  
 For the purpose of INTERNAL workshops (not for wider distribution)

Client: Supporting Growth  
 Project: South FTN Package



Discipline: GIS  
 Drawing No: SGA-XX-XX-004



Date Printed: 7/04/2020 8:39AM

Name: NoR\_4\_Mit2(CuPopesRd)

Path: C:\GIS\SGA\_FTNSGA\_FTIN\_new\aprx



Noise Level		PPFs	
dB L <sub>Aeq</sub> (24h)		<span style="color: green;">■</span>	Cat A
<span style="color: lightblue;">■</span>	55-60	<span style="color: orange;">■</span>	Cat B
<span style="color: lightgreen;">■</span>	60-65	<span style="color: red;">■</span>	Cat C
<span style="color: yellow;">■</span>	65-70	<span style="color: grey;">■</span>	Other Buildings
<span style="color: purple;">■</span>	> 70	<span style="border: 1px solid red; display: inline-block; width: 10px; height: 10px;"></span>	Assessment area
		<span style="color: black;">—</span>	Roads
		<span style="color: blue;">—</span>	Noise barrier

This map contains data derived in part or wholly from sources other than those party to the Supporting Growth Alliance, and therefore, no representations or warranties are made by those party to the Supporting Growth Alliance as to the accuracy or completeness of this information.

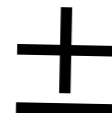
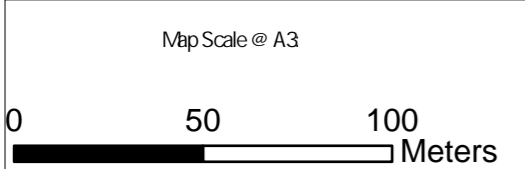
Map intended for distribution as a PDF document  
Scale may be incorrect when printed.

Contains information sourced from LINZ. Crown Copyright Reserved.

Unitary plan data sourced from Auckland Council published web services.  
Legend information can be viewed on Auckland Council unitary plan viewer.

Linework shown on this plan is conceptual only.  
Not to be used for construction.

Esri, Community Maps Contributors, LINZ, Stats NZ, Esri, HERE, Garmin, Foursquare, METI/NASA, USGS



Revision	Author	Verified	Approved	Date
1	Author	DRAFT	DRAFT	dd/mm/yyyy

**Supporting Growth**  
**NoR 4 - Mitigation 2 Road Traffic Noise**

Working Plans of Te Tupu Ngatahi.  
 For the purpose of INTERNAL workshops (not for wider distribution)

Client: Supporting Growth

Project: South FTN Package



Discipline: GIS

Drawing No: SGA-XX-XX-004











