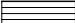





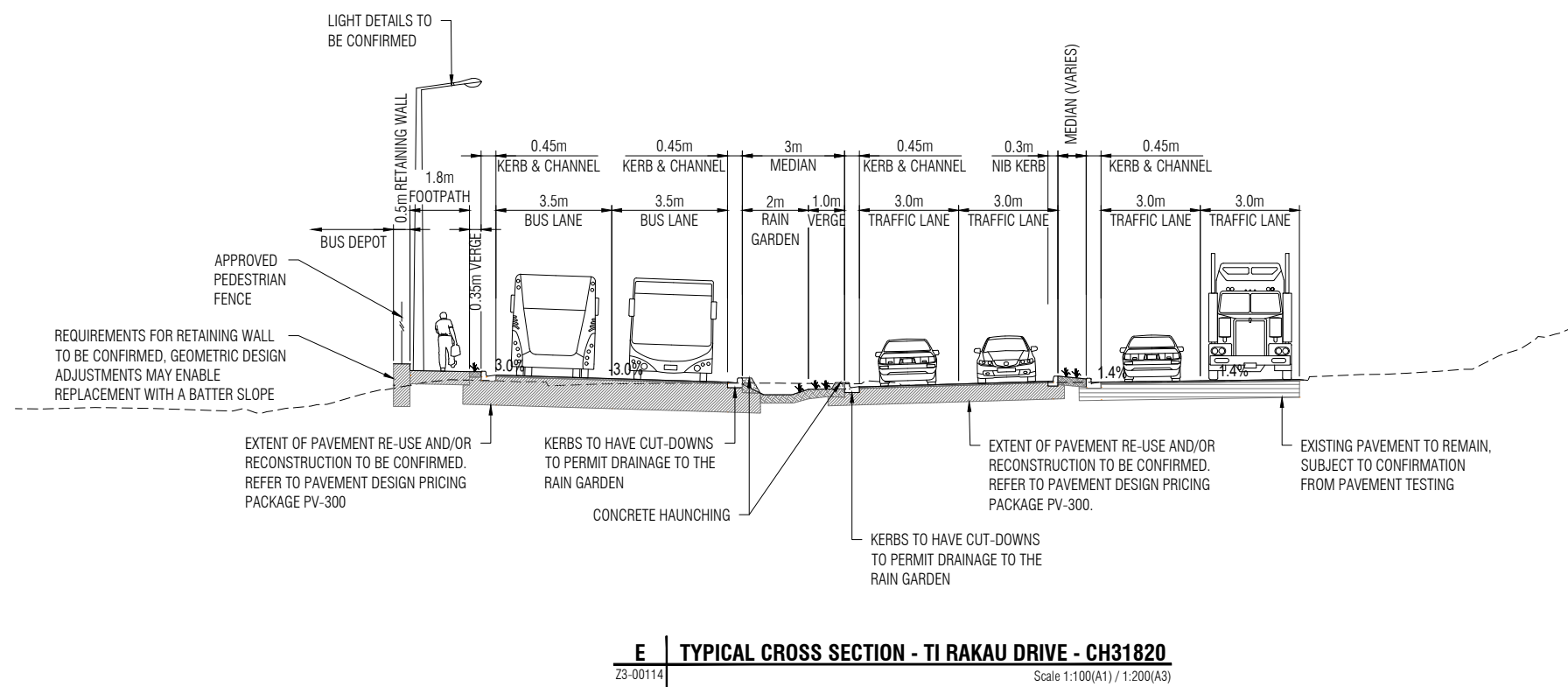
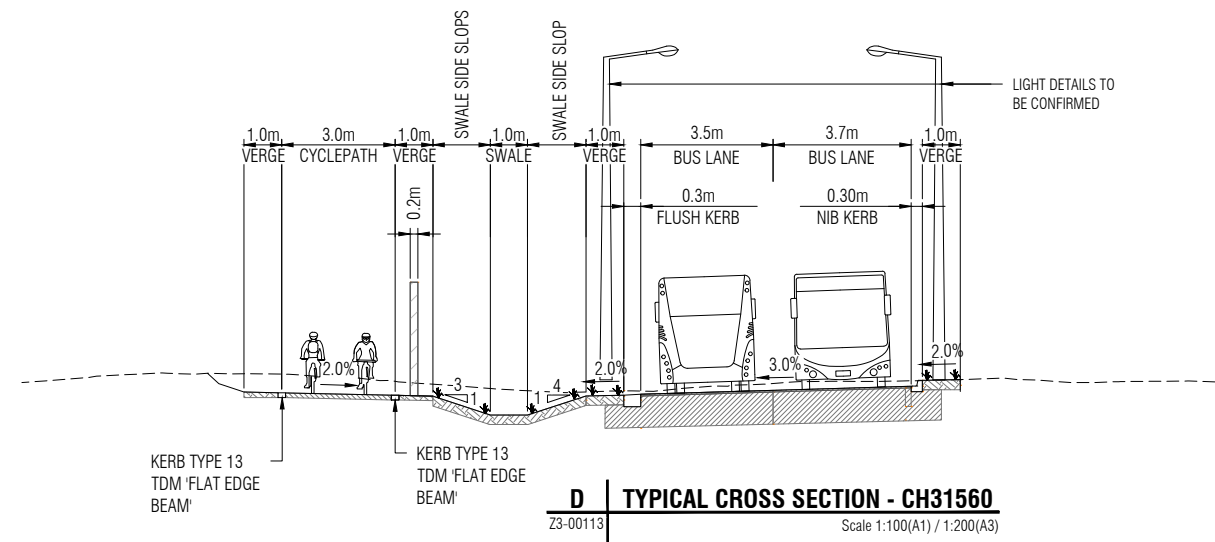


**NOTES**

1. REFER TO PRICING PACKAGE RD-303 FOR CYCLING AND WALKING FACILITIES DETAILS.
2. REFER TO PRICING PACKAGE PV-300 FOR PAVEMENT CONSTRUCTION DETAILS.
3. REFER TO PRICING PACKAGE SW-300 FOR DRAINAGE INCLUDING SWALES AND RAIN GARDEN DETAILS.
4. REFER TO ARCHITECTURAL PACKAGE AR-300 FOR INTERMEDIATE STATIONS INCLUDING SHELTERS AND FURNITURE DETAILS.

**LEGEND**

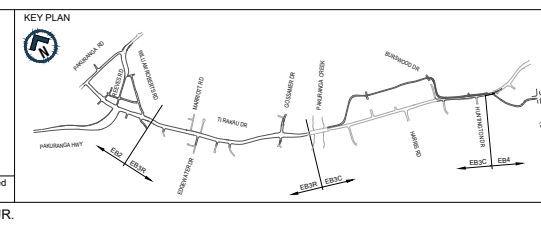
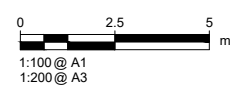
-  EXISTING PAVEMENT TO REMAIN
-  PROPOSED PAVEMENT CONSTRUCTION
-  PROPOSED LANDSCAPING
-  PROPOSED CYCLEWAY PAVEMENT CONSTRUCTION AS PER TDM TECHNICAL DETAIL FP0003-A 'HEAVY DUTY FOOTPATH'



Last saved by: GKAMINSKA\2021-08-03 Last Plotted: 2021-08-19  
Filename: EB234-1-RD-DG-Z3-00402.DWG

REV	DATE	DRAWN	REVISION DESCRIPTION
0	20/08/2021	M. Santos	ISSUED FOR REFERENCE DESIGN

DRAWN	DRAWING CHECK
G. Kaminska	M. Dalvi
DESIGNED	DESIGN REVIEW
R. Kendal	N. Smith
APPROVED	APPROVED DATE
S. Jones	20/08/2021



**AUCKLAND MANUKAU EASTERN TRANSPORT INITIATIVE**  
**EASTERN BUSWAY STAGES 2, 3 AND 4**  
**(PAKURANGA TO BOTANY)**

DRAWING STATUS	REFERENCE DESIGN	<b>NOT FOR CONSTRUCTION</b>
DRAWING TITLE	EB3C - TYPICAL CROSS SECTIONS TI RAKAU DRIVE AND BUSWAY SHEET 2 OF 2	
SCALE	1:100 (A1) 1:200 (A3)	SHEET SIZE A1
DRAWING No.	EB234-1-RD-DG-Z3-00402	REV 0