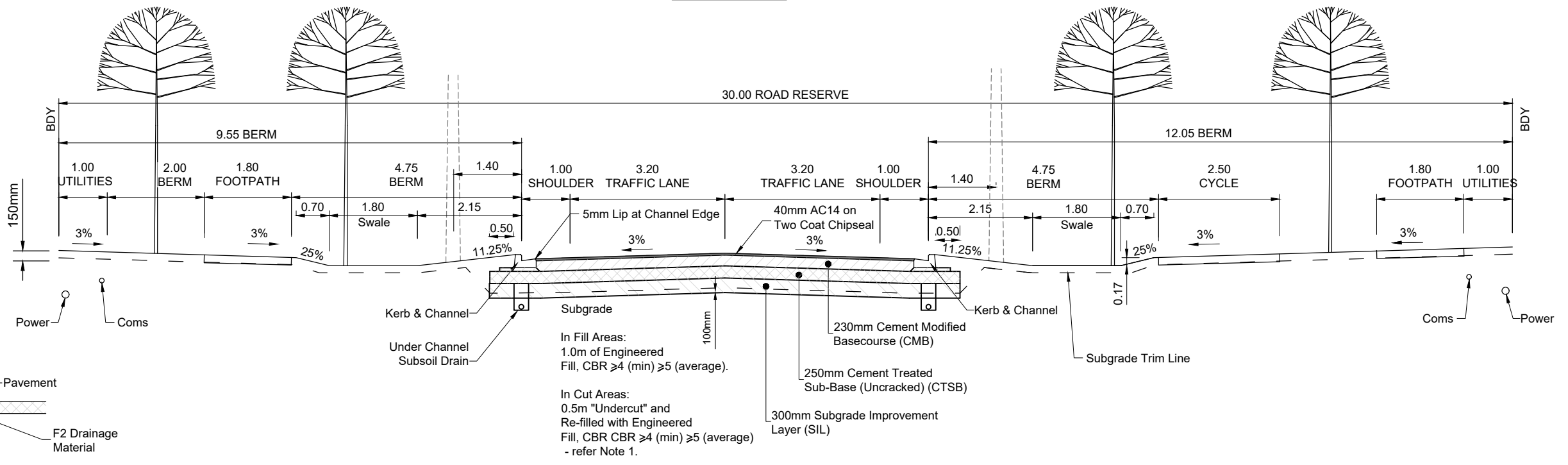


NOTE 1
Existing ground profile for Spine Road and RAB located within DSL will be as follows
1 Road Carriageway - Subgrade +100mm
2 Berms - Finished surface -150mm

NOTE 2
Contractor to trim subgrade to design level

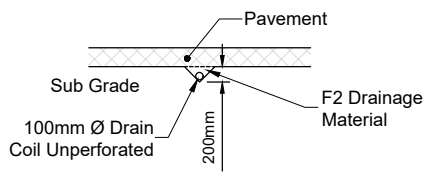
TYPICAL CROSS SECTION - SPINE ROAD
CH 3150 - 4000



SUBSOIL DRAINAGE NOTES
1. Upstream and Downstream Connections are to Utilise Suitable Connectors.
2. Longitudinal and Transverse Location in the Subgrade Must Ensure Positive Drainage.
3. All Locations to be As-Built.

TYPICAL CROSS SECTION - SPINE ROAD
CH 2800 - 3150

Note
1. Minimum in-situ subgrade CBR - 2 shall be achieved in cut areas. Where the in-situ subgrade CBR is less than 2, the depth of undercut shall be increased as directed by the engineer



PAVEMENT DRAIN

Land & Civil Engineering
PO Box 301 923, ALBANY 0752
© Land & Civil Engineering Copyright and Conditions of Use. These drawings shall only be used for the purpose for which they were supplied. Any re-use is prohibited and no part of this document may be reproduced or distributed without the written permission of LCE or its associate companies.

REV.	DESCRIPTION	CHECK	APP'D	DATE	NAME	DATE
A	SUBGRADE EXTENT CHANGED TO 500 BEHIND BOK			7.11.17		
B	SWALE ADDED TO BERM PROFILE			21.11.17	DESIGN	S.M. 8.17
C	MINOR MODS TO PAVEMENT DETAILS			13.03.18	DRAWN	K.W. 8.17
D	PAVEMENT DRAIN DETAILS ADDED			13.04.18	DRAWING CHECK	S.M. 8.17
E	SWALE DETAILS UPDATED			16.05.18	APPROVED	S.M. 8.17

CLIENT
DRURY SOUTH LTD

PROJECT
**DRURY SOUTH
SPINE ROAD SOUTH**
DRAWING TITLE
**SPINE ROAD
TYPICAL CROSS SECTIONS**

STATUS		
ENGINEERING APPROVAL		
DISP CIVIL	PROJECT No. 0010-17	DATE MAR 18
SCALE - A3 1:100	DWG No 450	REVISION E