


EPA Comments Register

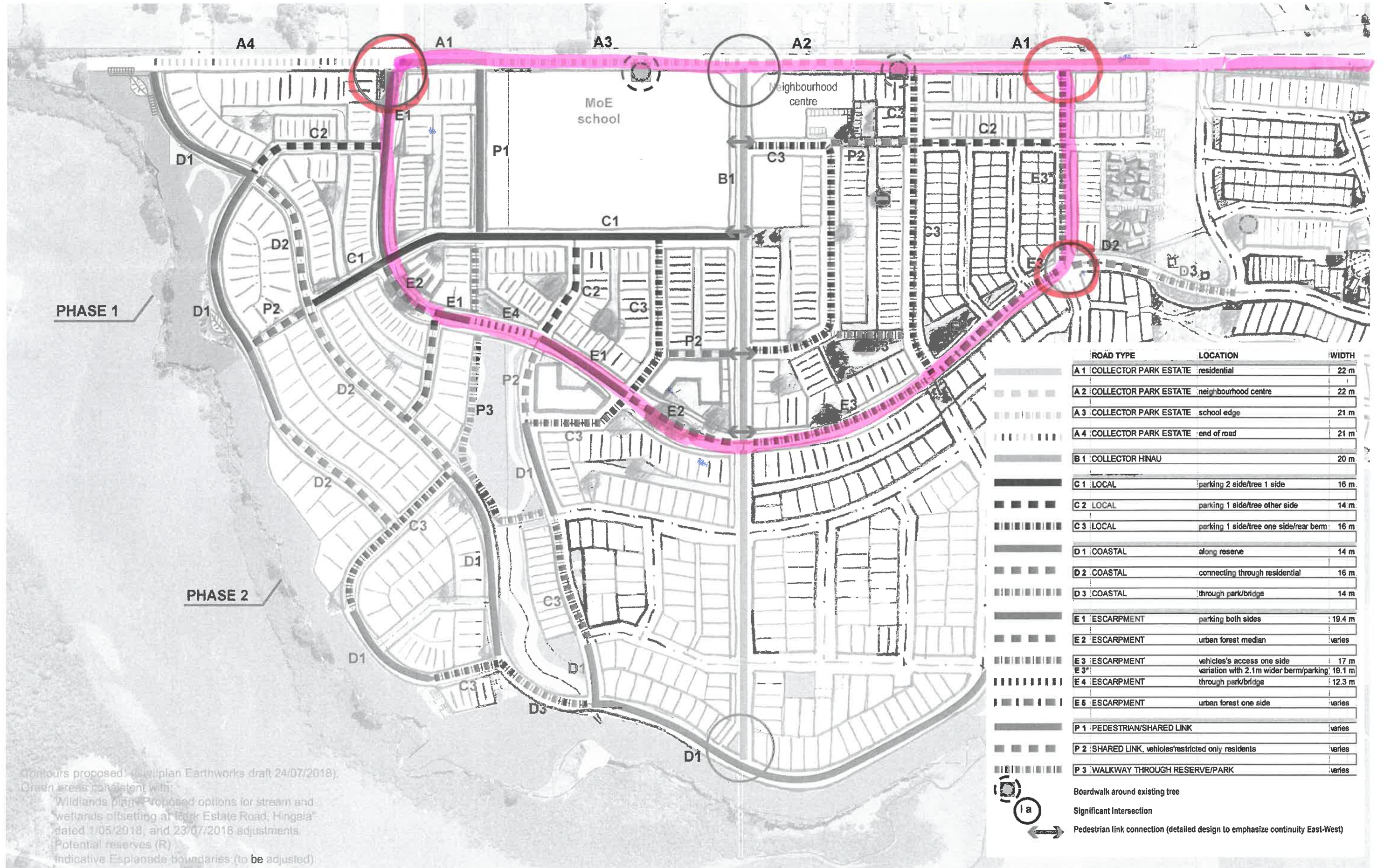
Application Type	Engineering Approval
Council Consent/EPA Number	ENG60335562
Address	180 Park Estate Road

Applicant to note: When providing designer's comment, please advise which document (section and page number) or plan number to refer to.

	Auckland Transport's Response 31/03/2019	Applicant's Response	Auckland Transport's Response	Applicant's Response	Conditions/Final Comments
AT Metro					
1.	<p>We note they have bus tracking at intersection 1, but not for Intersection 5. We need the tracking at both intersections for both the interim and the long term bus route. (refer attached its two pages)</p>  <p>SKM_C65800518091 211590.pdf</p> <p>As mentioned during reviewing draft EPA, Road 5/PER intersection should be designed for future roundabout conversion, with kerblines matching Road 1/PER.</p> <p>If the intent is to construct only the southern kerb lines with the intention to construct the raised table roundabout intersection once Road 5 is extended, then a full roundabout design should be provided now for review if it going to be part of this EPA. This will ensure that the kerblines are correctly lined and no issues with tracking/overhang for 12.6m and</p>				

Interim

transurban



ROAD TYPE	LOCATION	WIDTH
A 1	COLLECTOR PARK ESTATE residential	22 m
A 2	COLLECTOR PARK ESTATE neighbourhood centre	22 m
A 3	COLLECTOR PARK ESTATE school edge	21 m
A 4	COLLECTOR PARK ESTATE end of road	21 m
B 1	COLLECTOR HINAU	20 m
C 1	LOCAL parking 2 side/tree 1 side	16 m
C 2	LOCAL parking 1 side/tree other side	14 m
C 3	LOCAL parking 1 side/tree one side/rear berm	16 m
D 1	COASTAL along reserve	14 m
D 2	COASTAL connecting through residential	16 m
D 3	COASTAL through park/bridge	14 m
E 1	ESCARPMENT parking both sides	19.4 m
E 2	ESCARPMENT urban forest median	varies
E 3	ESCARPMENT vehicles's access one side	17 m
E 3*	ESCARPMENT variation with 2.1m wider berm/parking	19.1 m
E 4	ESCARPMENT through park/bridge	12.3 m
E 5	ESCARPMENT urban forest one side	varies
P 1	PEDESTRIAN/SHARED LINK	varies
P 2	SHARED LINK, vehicles/restricted only residents	varies
P 3	WALKWAY THROUGH RESERVE/PARK	varies

Boardwalk around existing tree
 Significant intersection
 Pedestrian link connection (detailed design to emphasize continuity East-West)

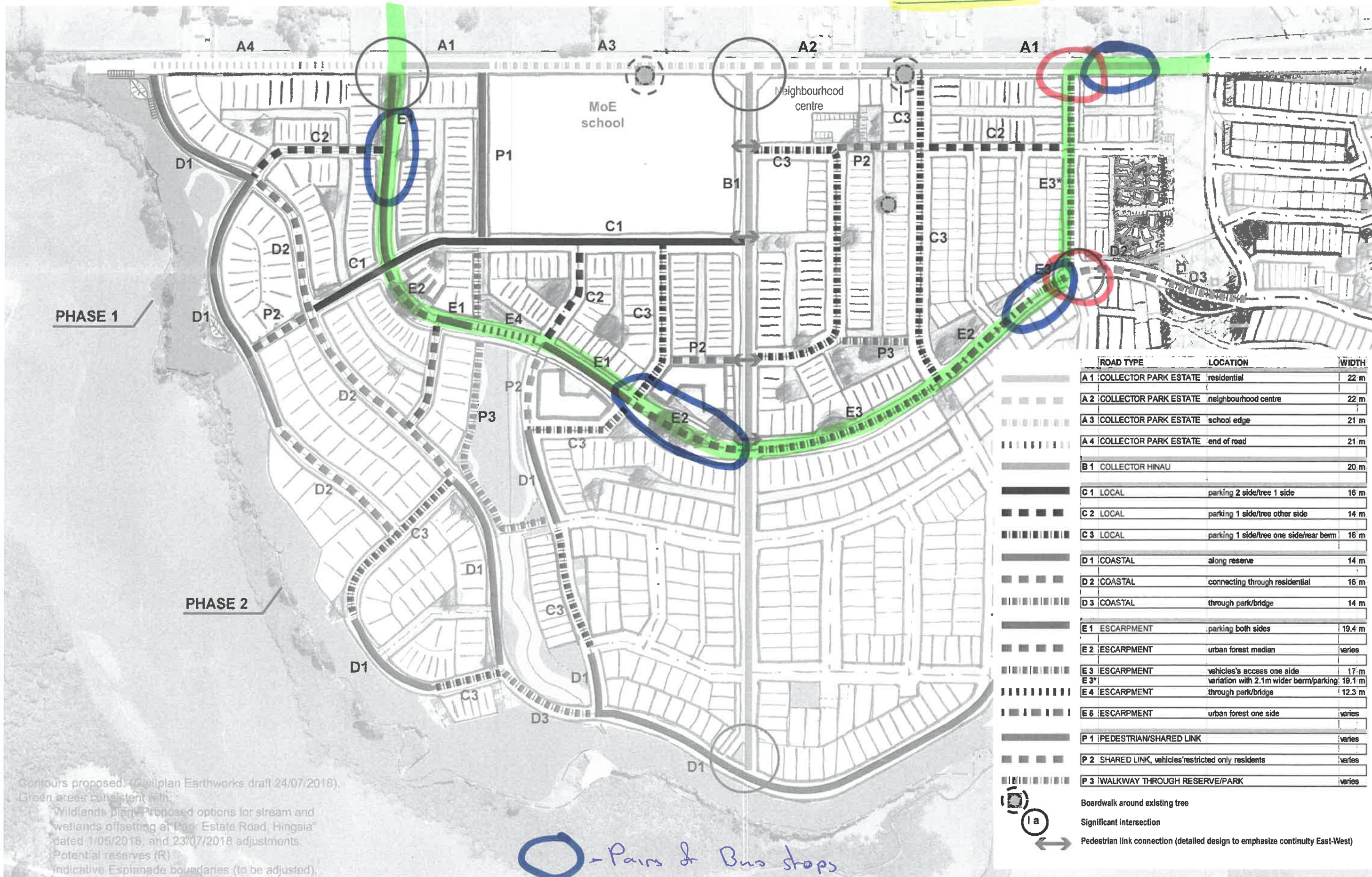
Contours proposed: (Civilplan Earthworks draft 24/07/2018).
 Green areas consistent with:
 Wildlands plan Proposed options for stream and wetlands offsetting at Park Estate Road, Hingaita dated 1/05/2018, and 23/07/2018 adjustments.
 Potential reserves (R)
 Indicative Esplanade boundaries (to be adjusted).



© Copyright Reserved by Transurban Limited. Without prejudice.
 Disclaimer: Aerial obtained from Auckland Council GIS Database
 This is a concept plan only. Detailed design and full typology design investigation required
 This is provided without prejudice and without liability

- turn movement

Long term



ROAD TYPE	LOCATION	WIDTH
A 1	COLLECTOR PARK ESTATE residential	22 m
A 2	COLLECTOR PARK ESTATE neighbourhood centre	22 m
A 3	COLLECTOR PARK ESTATE school edge	21 m
A 4	COLLECTOR PARK ESTATE end of road	21 m
B 1	COLLECTOR HINAU	20 m
C 1	LOCAL parking 2 side/tree 1 side	16 m
C 2	LOCAL parking 1 side/tree other side	14 m
C 3	LOCAL parking 1 side/tree one side/rear berm	16 m
D 1	COASTAL along reserve	14 m
D 2	COASTAL connecting through residential	16 m
D 3	COASTAL through park/bridge	14 m
E 1	ESCARPMENT parking both sides	19.4 m
E 2	ESCARPMENT urban forest median	varies
E 3	ESCARPMENT vehicles's access one side	17 m
E 3*	ESCARPMENT variation with 2.1m wider berm/parking	19.1 m
E 4	ESCARPMENT through park/bridge	12.3 m
E 5	ESCARPMENT urban forest one side	varies
P 1	PEDESTRIAN/SHARED LINK	varies
P 2	SHARED LINK, vehicles' restricted only residents	varies
P 3	WALKWAY THROUGH RESERVE/PARK	varies

Contours proposed. (Civilplan Earthworks draft 24/07/2018).
 Green areas consistent with:
 Wildlands plan Proposed options for stream and wetlands offsetting at Park Estate Road, Hingaia dated 1/05/2018, and 23/07/2018 adjustments.
 Potential reserves (R)
 Indicative Esplanade boundaries (to be adjusted).

○ - Pairs of Bus stops

○ - turn movements

Boardwalk around existing tree
 Significant intersection
 Pedestrian link connection (detailed design to emphasize continuity East-West)



© Copyright Reserved by Transurban Limited. Without prejudice.
 Disclaimer: Aerial obtained from Auckland Council GIS Database
 This is a concept plan only. Detailed design and full typology design investigation required
 This is provided without prejudice and without liability