



PARK GREEN



North

transurban & CIVILPLAN

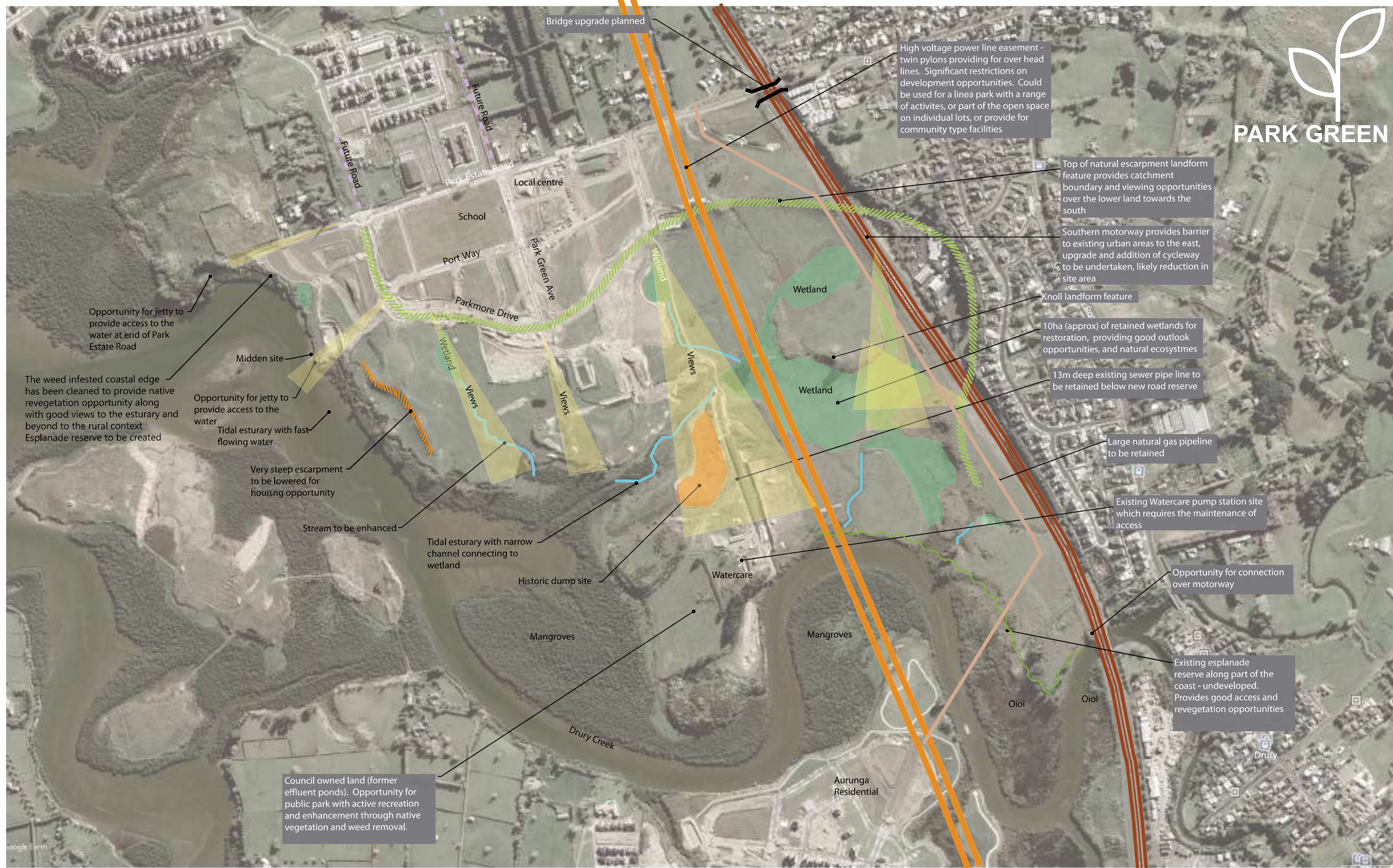
© Copyright Reserved by Transurban Limited
Disclaimer: Aerial obtained from Auckland Council GIS Database

Illustrative Masterplan
Park Green - Plan Change
Date : 24/03/21

PC01



PARK GREEN



North

transurban & CIVILPLAN

© Copyright Reserved by Transurban Limited
Disclaimer: Aerial obtained from Auckland Council GIS Database

The wetlands have been defined by the earthworks consents which require enhancement planting. There is great opportunities to further enhance these elements with a wider range of habitats and recreational and visual outcomes. While some views are identified, there are many viewing locations and there is an opportunity to maximise views for as many dwellings as possible. The level change in the landform assists with this outcome.

Opportunities and Constraints
Park Green - Plan Change
Date : 24/03/21

PC02







PARK GREEN






North

transurban & CIVILPLAN

© Copyright Reserved by Transurban Limited
Disclaimer: Aerial obtained from Auckland Council GIS Database

-  Separated cycle path
-  3m wide shared path
-  NZTA cycle path (TBC)
-  Proposed Bus Route

-  Roundabout
-  Bus stops
-  200m - 400m - 800m radius

Cycle Paths and Bus Routes
Park Green - Plan Change
Date : 24/03/21

PC03



PARK GREEN



Areas previously identified appropriate for higher density opportunities with some specific to high amenity opportunities. This was in the context of the requirement for larger lots along the coast.



North

transurban & CIVILPLAN

© Copyright Reserved by Transurban Limited
Disclaimer: Aerial obtained from Auckland Council GIS Database

Higher density areas
Park Green - Plan Change
Date : 24/03/21

PC04