

To: John Dobrowolski  
 Russell Group

From: Glen Farley  
 Clough & Associates Ltd

Date: 1 June 2022

Subject: Clause 23(1) RMA request for Further Information relating to Historic Heritage –  
 Private Plan Change request by Beachlands South Limited Partnership

**Assessment of the historic heritage significance of the site of the former building based on the criteria in the AUP Chapter B5.2.2**

<b>Criterion</b>	<b>Comment</b>	<b>Significance Evaluation</b>
a) historical: The place reflects important or representative aspects of national, regional or local history, or is associated with an important event, person, group of people or idea or early period of settlement within New Zealand, the region or locality	The building site was associated with the grandparents of the farm owners, but the building has been demolished and the site no longer reflects this association	Little, local
b) social: The place has a strong or special association with, or is held in high esteem by, a community or cultural group for its symbolic, spiritual, commemorative, traditional or other cultural value	The site is not known to the community and has no special associations	None
c) Mana Whenua: The place has a strong or special association with, or is held in high esteem by, Mana Whenua for its symbolic, spiritual, commemorative, traditional or other cultural value	To be determined by mana whenua.	Not assessed
d) knowledge: The place has potential to provide knowledge through scientific or scholarly study or to contribute to an understanding of the cultural or natural history of New Zealand, the region, or locality	The site has little potential to provide knowledge as the known remains consist of remnant building foundations. The former building is known to have served as an accommodation building during the ownership of the grandparents of the farm owners. No other remains have been identified, but if associated subsurface remains are present (e.g. rubbish disposal areas) they would have the potential to add to knowledge of the site	Little, local
e) technology: The place demonstrates technical accomplishment, innovation or achievement in its structure, construction, components or use of materials	N/a. The structure once present has been demolished and only remnant foundations are present	None



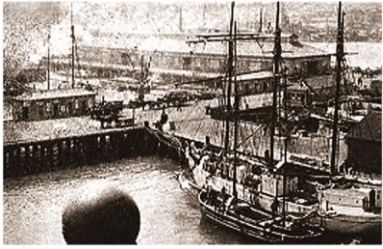
Criterion	Comment	Significance Evaluation
f) physical attributes: The place is a notable or representative example of a type, design or style, method of construction, craftsmanship or use of materials or the work of a notable architect, designer, engineer or builder;	N/a. The structure once present has been demolished and only remnant foundations are present	None
g) aesthetic: The place is notable or distinctive for its aesthetic, visual, or landmark qualities	The place has no aesthetic, visual or landmark qualities, as the only visible remains are remnant foundations at ground level	None
h) context: The place contributes to or is associated with a wider historical or cultural context, streetscape, townscape, landscape or setting	The place contributes in a minor way to the local historic heritage landscape, which includes an early farm building at 740 Whitford-Maraetai Road (not yet assessed, see H.6), a mature macrocarpa located nearby (see H.7), and earlier sites relating to Māori settlement	Moderate, local

**Assessment of the historic heritage significance of pā site R11/1619 based on the criteria in the AUP Chapter B5.2.2**

Criterion	Comment	Significance Evaluation
a) historical: The place reflects important or representative aspects of national, regional or local history, or is associated with an important event, person, group of people or idea or early period of settlement within New Zealand, the region or locality	The pā is broadly representative of Māori settlement in the area and is assumed to be associated with Ngāi Tai ancestors, but its history and associations with any particular individuals are not known (Ngāi Tai ki Tāmaki CVA 2021: 17), and it is not known to be of early date	Little, local
b) social: The place has a strong or special association with, or is held in high esteem by, a community or cultural group for its symbolic, spiritual, commemorative, traditional or other cultural value	The site is not known to the community and has no special community associations	None
c) Mana Whenua: The place has a strong or special association with, or is held in high esteem by, Mana Whenua for its symbolic, spiritual, commemorative, traditional or other cultural value	The CVA provided by Ngāi Tai ki Tāmaki (2021, pp.17-18) indicates that the pa and surrounds are of high cultural significance	Not assessed – see CVA
d) knowledge: The place has potential to provide knowledge through scientific or scholarly study or to contribute to an understanding of the cultural or natural history of New Zealand, the region, or locality	The pā is a complex site in terms of the range of known and potential features it contains. The site has considerable potential to provide knowledge as the site could potentially hold a variety of archaeological deposits which provide information relating to the past occupation of this site. The site has the potential to educate the public and	Considerable, regional



Criterion	Comment	Significance Evaluation
	enhance public understand of the history of the region.	
e) technology: The place demonstrates technical accomplishment, innovation or achievement in its structure, construction, components or use of materials	The natural formation was heavily modified for occupation and in addition to numerous pits and a defensive ditch the site is likely to contain structural remains in the form of additional pits, terraces and postholes. However, these are unlikely to demonstrate significant technical accomplishment or innovation	Little
f) physical attributes: The place is a notable or representative example of a type, design or style, method of construction, craftsmanship or use of materials or the work of a notable architect, designer, engineer or builder;	The pā site is a representative example of its type, with the features north of the defensive ditch particularly well preserved, notwithstanding the bulldozed track.	Moderate
g) aesthetic: The place is notable or distinctive for its aesthetic, visual, or landmark qualities	The pā site and remaining visible features have some aesthetic value.	Moderate
h) context: The place contributes to or is associated with a wider historical or cultural context, streetscape, townscape, landscape or setting	The place contributes in a significant way to the local historic heritage landscape, which includes a number of sites relating to Māori settlement, which may show the continued use of the place across time. The site itself appears to be predominantly intact and the relationships between the components of the site are clear. Several recorded sites in close proximity may have been contemporary with and associated with the pa: R11/1617 (midden), 1618 (terraces/midden), 1440 (pits/midden), 1442 (pits/terraces), 1443 (?terrace) and 2522–2523 (middens)	Considerable, local



# Clough

& ASSOCIATES LTD

321 Forest Hill Road, Waiatarua, Auckland 0612

09 814 1946 heritage@clough.co.nz

www.clough.co.nz



Figure 1. Plan showing geotechnical testing locations in relation to recorded archaeological sites