
Date: Monday, 18 June 2018
Time: 3.00pm
Venue: Matariki Room
Stardome Observatory & Planetarium
670 Manukau Road, Maungakiekie
Auckland

TŪPUNA MAUNGA O TĀMAKI MAKAURAU AUTHORITY

HUI 37 – 18 June 2018

Open Agenda

| | | |
|---------------------------|----------------------|---|
| Chairperson | Paul Majurey | Ngā Mana Whenua o Tāmaki Makaurau (Marutūāhu Rōpū) |
| Deputy Chairperson | Cr Alf Filipaina | Auckland Council (Governing Body) |
| Members | Karen Adair | Crown Representative |
| | Cr Josephine Bartley | Auckland Council (Governing Body) |
| | Cr Dr Cathy Casey | Auckland Council (Governing Body) |
| | Glenda Fryer | Auckland Council (Deputy Chair – Albert-Eden Local Board) |
| | Kit Parkinson | Auckland Council (Deputy Chair – Ōrākei Local Board) |
| | Malcolm Paterson | Ngā Mana Whenua o Tāmaki Makaurau (Ngāti Whātua Rōpū) |
| | Joe Pihema | Ngā Mana Whenua o Tāmaki Makaurau (Ngāti Whātua Rōpū) |
| | Hauāuru Rawiri | Ngā Mana Whenua o Tāmaki Makaurau (Marutūāhu Rōpū) |
| | Lemauga Lydia Sosene | Auckland Council (Chair – Māngere-Ōtāhuhu Local Board) |
| | Josie Smith | Ngā Mana Whenua o Tāmaki Makaurau (Waiohua-Tāmaki Rōpū) |
| | Karen Wilson | Ngā Mana Whenua o Tāmaki Makaurau (Waiohua-Tāmaki Rōpū) |

ITEM TABLE OF CONTENTS

1. Apologies
2. Declaration of Interest
3. Ratification of Hui 36
4. Quarterly report
5. Maungawhau Kiosk
6. Auckland Plan 2050
7. Registers
 - A Health & Safety
 - B Events
 - C Media
8. Stardome presentation

(Quorum is 7 members, comprising the chair or deputy chair and 2 members appointed by the rōpū entities and 2 members appointed by Auckland Council)

Ngā Mana Whenua o Tāmaki Makaurau Collective Redress Act 2014

109 Functions and powers

- (1) The Maunga Authority has the powers and functions conferred on it by or under this Act or any other enactment.
- (2) In exercising its powers and carrying out its functions in relation to the maunga, the Maunga Authority must have regard to—
 - (a) the spiritual, ancestral, cultural, customary, and historical significance of the maunga to Ngā Mana Whenua o Tāmaki Makaurau; and
 - (b) section 41(2).
- (3) In exercising its powers and carrying out its functions in relation to the administered lands, the Maunga Authority must have regard to the spiritual, ancestral, cultural, customary, and historical significance of the administered lands to Ngā Mana Whenua o Tāmaki Makaurau.

[Emphasis added]

41 Maunga must remain as reserves vested in trustee

- (1) This section applies to each maunga once the maunga is—
 - (a) vested in the trustee under subpart 1, 2, or 3 of this Part;and
 - (b) declared a reserve under any of sections 18 to 29, 33, and 39.
- (2) The maunga is held by the trustee for the common benefit of Ngā Mana Whenua o Tāmaki Makaurau and the other people of Auckland.

...

[Emphasis added]



Key

- Tūpuna Maunga
- Local board boundaries and geographic areas

Date: Monday, 28 May 2018
Time: 3:09pm
Venue: Ground Floor Board Room
Auckland Town Hall
301 Queen Street, Auckland

**TŪPUNA MAUNGA O TĀMAKI MAKĀURAU
AUTHORITY
HUI 36 – 28 May 2018
Open Minutes**

| | | |
|---------------------------|---|--|
| Chairperson | Paul Majurey | Ngā Mana Whenua o Tāmaki Makaurau (Marutūāhu Rōpū) |
| Deputy Chairperson | Cr Alf Filipaina | Auckland Council (Governing Body) |
| Members | Glenda Fryer Malcolm Paterson Karen Wilson | Auckland Council (Deputy Chair – Albert-Eden Local Board) Ngā Mana Whenua o Tāmaki Makaurau (Ngāti Whātua Rōpū) Ngā Mana Whenua o Tāmaki Makaurau (Waiohua-Tāmaki Rōpū) |
| Apologies | Cr Josephine Bartley Cr Dr Cathy Casey Kit Parkinson Joe Pihema Hauāuru Rawiri Lemauga Lydia Sosene Josie Smith | Auckland Council (Governing Body) Auckland Council (Governing Body) Auckland Council (Deputy Chair – Ōrākei Local Board) Ngā Mana Whenua o Tāmaki Makaurau (Ngāti Whātua Rōpū) Ngā Mana Whenua o Tāmaki Makaurau (Marutūāhu Rōpū) Auckland Council (Chair – Māngere-Ōtāhuhu Local Board) Ngā Mana Whenua o Tāmaki Makaurau (Waiohua-Tāmaki Rōpū) |

The Tūpuna Maunga Authority was inquorate, all items will be ratified at Hui 37.

1. Apologies

Moved: Cr Filipaina Seconded: Glenda Fryer

That the Tūpuna Maunga Authority:

- a. accept** the apologies from Cr J Bartley, Cr Dr C Casey, Kit Parkinson, Joe Pihema, Hauāuru Rawiri, Lemauga Lydia Sosene, and Josie Smith for absence.

CARRIED

2. Declarations of Interest

There were no declarations of interest.

3. Confirmation of Minutes

Moved: Cr Filipaina Seconded: Glenda Fryer

That the Tūpuna Maunga Authority:

- a. confirm** the minutes of Hui 35 held on Monday, 30 April 2018, as a true and accurate record.

CARRIED

4. **Operational Plan 2018/2019**

Note: Changes to the original motion were incorporated with the addition of clause c), with the agreement of the meeting.

Moved: Malcolm Paterson Seconded: Karen Wilson

That the Tūpuna Maunga Authority:

- a. **approve** the Tūpuna Maunga Authority Operational Plan 2018/19 (Attachment B) and the summary of the Tūpuna Maunga Authority Operational Plan 2018/19 (Attachment C);
- b. **delegate** authority to the Head of Co-governance to incorporate into the Operational Plan maps and photographs and any further minor typographical changes that may be identified;
- c. **note** the addition of the paragraph on service levels, tabled at hui 36, at the conclusion of the Funding and Revenue section; and
- d. **note** the Auckland Council Governing Body will be invited to approve the Tūpuna Maunga Authority Operational Plan 2018/19 and the summary of the Tūpuna Maunga Authority Operational Plan 2018/19 for inclusion in the Annual Plan 2018/19 on or about 31 May 2018.

CARRIED

5. **Maungauika**

Moved: Cr Filipaina Seconded: Malcolm Paterson

That the Tūpuna Maunga Authority:

- a. **supports** the proposal from Auckland Council for the transfer of the administration of Maungauika to the Tūpuna Maunga Authority.

CARRIED

6. **Registers**

An additional media article was tabled. A copy has been placed on the official minutes and is available on the Auckland Council website as a minutes attachment.

Moved: Paul Majurey Seconded: Glenda Fryer

That the Tūpuna Maunga Authority:

- a. **note** the attached Registers, which have been updated since Hui 35 (30 April 2018).

CARRIED

6. Housing New Zealand – verbal update

- Lucy Smith, Development Manager, and Sarah R. Chapman, Poutakawaenga from Homes.Land.Community. (HLC) presented to the Tūpuna Maunga Authority on housing development plans in the Puketāpapa area.
- HLC is a subsidiary of Housing New Zealand. Some of the planned housing developments are close to the maunga.
- The Tūpuna Maunga Authority thanked HLC staff for their update.

The Chairperson acknowledged the news of the passing of Cr Dick Quax.

Paul Puru, Kaihoutu Wheako Manuhiri, Tūpuna Maunga Authority closed the hui.

4:14 pm

The Chairperson thanked members for their attendance and attention to business and declared the meeting closed.

CONFIRMED AS A TRUE AND CORRECT RECORD AT A
MEETING OF THE TŪPUNA MAUNGA O TĀMAKI
MAKAURAU AUTHORITY HELD ON

DATE:.....

CHAIRPERSON:.....

Open Agenda

1. Apologies

No apologies had been received at the close of the agenda.

2. Declarations of Interest

Members are reminded of the need to be vigilant to stand aside from decision making when a conflict arises between their role as a member and any private or other external interest they might have.

3. Ratification of Hui 36

That the Tūpuna Maunga Authority:

- a. **confirm** that the actions taken and business transacted at the Tūpuna Maunga Authority Hui 36 held on Monday, 28 May 2018 is accurately described in the minutes of the meeting and therefore accept the minutes, and
- b. **ratify and adopt** the resolutions made at Hui 36.

Maunga Authority: Quarterly Report (Q3)

Author/Presenters: Nick Turoa, Manager – Tūpuna Maunga

| | |
|------------------------|---|
| Purpose | This report provides the Tūpuna Maunga o Tāmaki Makaurau Authority with the Quarterly Report for the third quarter of 2017/18 financial year. |
| Recommendations | That the Tūpuna Maunga o Tāmaki Maunga Authority: a. note the attached 3 rd Quarter Report for the 2017/18 financial year. |

Latest Quarterly Report

1. Attached is the Tūpuna Maunga Authority Quarterly Report for the third quarter of the 2017/18 financial year.

Attachments

- a. Tūpuna Maunga Authority Quarterly Performance report



QUARTER 3 REPORT

To 30 March 2018

CONTENTS

1. Key highlights

2. Tūpuna Maunga – key objectives and maunga-specific work programme

3. Financials

3.1 Operating revenue and costs

3.2 Capital projects

1. Key highlights in this quarter:

- **Maunga pedestrianisation**

Gate and signs installed on Takarunga and new vehicle restrictions took effect from 1 March.

Works on Pukewīwī / Puketāpapa completed to reconfigure the tihi carpark and remove redundant infrastructure.

Works started on Maungakiekie to construct the automated gates at the base of the tihi road, reconfigure that intersection and install signs.

Resource consent application lodged for the entranceway carpark at the base of Maungarei and the reconfiguration of the tihi carpark.

Further refinement of the detailed design of the Owairaka entranceway carpark, new toilets and removal of redundant infrastructure.

- **Maungawhau/Mt Eden toilets**

Progressed detailed specifications and specialist reports to support a future consent application for the new toilet at Maungawhau/Mt Eden

- **Vegetation restoration**

Resource consent granted for vegetation restoration project on Maungarei/Mt Wellington and procurement initiated.

- **Draft Operational Plan 2018/19 (and LTP 2018-28)**

The Maunga Authority undertook consultation on the draft plan and heard oral submissions from the Friends of Maungawhau and the Northern Playcentre Association. The Auckland Council also sought feedback on the draft plan as part of its own Long Term Plan 2018-28 consultation process.

- **Local Board engagement**

Met with 6 local board chairs and the General Manager Local Board Services. Attended a joint hui with the Maungakiekie-Tāmaki Local Board and the Mangere Otāhuhu Local Board.

- **Commercial activity and visitor research**

Commercial activity and visitor research for Maungawhau/Mt Eden, Maungakiekie/One Tree Hill and Takarunga/Mt Victoria was completed.

- **Third party applications**

Resource consent applications were monitored and submissions were lodged on behalf of the Tūpuna Maunga Authority in relation to a number of consent applications (refer to RMA Rōpū update reports).

2. Tūpuna Maunga key activities and maunga-specific work programmes

This section of the Performance Report lists each of the Tūpuna Maunga and the key activities undertaken this quarter:

| | |
|---|--|
| Matukutūruru / Wiri | Continued planning to develop main arrival area and tracks. Continued discussions with Department of Corrections about partnership. Pest and weed control focus was on eco weeds. |
| Maungakiekie / One Tree Hill | Progressed plans, consents and contracts for Olive Grove track upgrade, Sorrento carpark renewal, a waterline valve upgrade. Works started on the pedestrianisation on 26 March. Pest and weed control focus was on eco weeds and February and March rabbit shoots in conjunction with Cornwall Park Trust Board. |
| Maungarei / Mt Wellington | Lodged resource consent application for pedestrianisation. Resource consent granted for vegetation restoration project and procurement initiated. Progressed plans for tihi crater rim track. Pest and weed control focus was on eco weeds and February and March rabbit shoots. Anogramma management in lower pits. |
| Maungawhau / Mt Eden | Progressed plans for tihi crater rim track, the Glenfell Place Staircase upgrade and Tahaki Shed renewal. Managed licence with Walt's Real Ice Cream. Pest and weed control focus was on eco weeds; including planting preparation for track realignment in Batger Quarry. |
| Ōhinerau / Mt Hobson | Progressed plans to detailed design for track upgrade from Remuera Road to tihi and removal of redundant infrastructure. Met with Watercare to oversee and sign off completion works. Removed infected dutch elm trees. Pest and weed control focus was on eco weeds and February and March rabbit shoots. |
| Ōhūiarangi/Pigeon Mountain | Progressed plans for track network to improve access and protect values. Progressed lease discussions with Pakuranga Tennis Club. Pest and weed control focus was on eco weeds. |
| Ōtāhuhu / Mt Richmond | Progressed plans for removal of redundant toilet block and upgrade of the loop track and entrances. Finalised procurement for removal of olive trees. Pest and weed control focus was on eco weeds and rabbit control undertaken in February. |
| Ōwairaka / Te Ahi-Ka-Rakataura /Mt Albert | Progressed pedestrianisation plans. Pest and weed control focus was on eco weeds and January rat pulse (Owairaka Ratbaggers groups) and possum control. |
| Pukewīwī / Puketāpapa / Mt Roskill | Completed pedestrianisation works and removed redundant infrastructure. Pest and weed control focus was on eco weeds. |

| | |
|--|--|
| Takarunga / Mt Victoria | Completed pedestrianisation works and went live with new vehicle access rules. Management on-site for 2 weeks. Introduced parking enforcement. Progressed planning for the track upgrade. Finalised lease with the Depot. Pest and weed control focus was on eco weeds, January rat pulse (volunteers) and some possum control (volunteers). |
| Te Kōpuke / Titikopuke / Mt St John | Progressed track network plans. Pest and weed control focus was on eco weeds. |
| Te Pane-o-Mataaho/ Te Ara Puera / Māngere Mountain | Progressed crater rim track plans. Facilitated the Love Your Maunga event on 17 February. Pest and weed control focus was on eco weeds and February and March rabbit control. |
| Te Tātua-a-Riukiuta / Big King | Started track network plans. Pest and weed control focus was on eco weeds. February and March rabbit shoots, January rat pulse and some possum control (volunteers). Volunteers have also extended their focus to adjoining HNZ properties. |

3.0 FINANCIALS

3.1 Operating revenue and costs

TŪPUNA MAUNGA O TĀMAKI MAKAURAU AUTHORITY

Operating Revenue and Expenditure for Quarter 3- March 2018

| Type | Actual | Budget | Variance | Actual | Budget | Variance |
|--|-----------------|-----------------|-----------------|---------------|---------------|---------------|
| | Qtr 3 \$'000 | Qtr 3 \$'002 | Qtr 3 \$'000 | YTD \$'000 | YTD \$'000 | YTD \$'000 |
| Fees and user charges revenue | 0 | 0 | 0 | -4 | -4 | 0 |
| Property rental revenue | -62 | -56 | 6 | -191 | -164 | 27 |
| Other revenue from activities incl events | -1 | -2 | -1 | -4 | -7 | -3 |
| Operating Revenue | -63 | -58 | 5 | -199 | -175 | 24 |
| Repairs and maintenance & Outsourced works | 443 | 483 | 40 | 1,284 | 1,435 | 151 |
| Professional services | 118 | 244 | 127 | 214 | 697 | 483 |
| Other expenditure on activities | 234 | 227 | -7 | 581 | 649 | 68 |
| Operating Expenditure | 794 | 954 | 160 | 2,079 | 2,781 | 702 |
| Governance Costs | 20 | 31 | 11 | 64 | 93 | 30 |
| Net Operating Result | 751 | 927 | 176 | 1,943 | 2,699 | 756 |

Operating Revenue is 9% over budget for the quarter (but under budget for year to date). This includes additional commercial revenue earned over the summer months on Maungawhau.

Operating Expenditure for quarter three is under budget by 17%. Professional fees are under budget for the third quarter due to timing differences with a number of projects. Repairs and maintenance is under budget for quarter three but is expected to be on budget at year end.

3.2 Capital projects

TŪPUNA MAUNGA O TĀMAKI MAKAURAU AUTHORITY

Capital Projects spend for Quarter 3 - March 2018

| | Actual | Budget | Variance | Actual | Budget | Variance |
|-------------------------------|-----------------|-----------------|-----------------|---------------|---------------|---------------|
| | Qtr 3 \$'000 | Qtr 3 \$'000 | Qtr 3 \$'000 | YTD \$'000 | YTD \$'000 | YTD \$'000 |
| Total Capital Projects | 331 | 817 | 486 | 541 | 2,450 | 1,909 |

There are a number of capital works projects underway. These are mainly in the design and consenting stage and costs are just starting to be incurred as construction started in quarter three.

Maungawhau Kiosk

Authors: Dominic Wilson, Nicholas Turoa, Tūpuna Maunga Authority

| | |
|------------------------|--|
| Purpose | To provide a delegation from the Tūpuna Maunga Authority for the undertaking of a process to find a lessee, or lessees, in the kiosk at Maungawhau |
| Recommendations | <p>That the Tūpuna Maunga Authority</p> <ul style="list-style-type: none">a) requests Management to undertake a publicly advertised process seeking proposals of interest in the kiosk site as set out in this report;b) delegates to Management the task of shortlisting bids to be brought back to the Authority for decision;c) adopts the following guiding principles for this process:<ul style="list-style-type: none">i. Proposals respect the values of the Tūpuna Maunga;ii. Proposals reflect the nature of the zones; andiii. Submitters demonstrate the appropriate experience and ability to deliver the relevant offering. |

Background

1. At Hui 31 (27 November 2017), the Authority resolved to grant a lease to Walt's Real Fruit Ice Cream and delegated the authority to the Chair and Deputy Chair to grant a lease to any appropriate café provider for the November 2017 to April 2018 period.
2. The delegation established for the November 2017 to April 2018 period is now at an end and the Authority needs to consider the future of the kiosk site going forward.

Statutory context

3. The process and any decision to lease space within a reserve must take into account the legislative and policy framework.
4. The Authority administers the Tūpuna Maunga under the Reserves Act 1977 and pursuant to Ngā Mana Whenua o Tāmaki Makaurau Collective Redress Act 2014. The Hauraki Gulf Marine Park Act 2000 is also relevant.
5. Section 109(2) of Ngā Mana Whenua o Tāmaki Makaurau Collective Redress Act 2014 requires the Authority to have regard to the spiritual, ancestral, cultural, customary, and historical significance of the maunga to Ngā Mana Whenua o Tāmaki Makaurau and that the tūpuna maunga is held in trust for Ngā Mana Whenua and the other people of Auckland.
6. The Tūpuna Maunga Authority's Integrated Management Plan was adopted by the Authority in terms of Ngā Mana Whenua o Tāmaki Makaurau Collective Redress Act 2014 and the Reserves Act 1977. The Integrated Management Plan describes a series of "Values" and "Pathways" that guide all activities on the tūpuna maunga.

7. Under s54 of the Reserves Act 1977 the Authority should consider whether any business that is offered a lease is necessary to enable the public to obtain the benefit and enjoyment of the space or for the convenience of persons using the space. Before granting any lease the Authority must make a public notice and offer to hear any submissions (pursuant to s119 and s120 of the Reserves Act 1977).
8. Tūpuna maunga rest within the catchments that support the Hauraki Gulf. The purpose of the Hauraki Gulf Marine Park Act 2000, among other matters, is to “recognise the historic, traditional, cultural, and spiritual relationship of the tangata whenua with the Hauraki Gulf”.

Delegation

9. It is proposed that the Authority authorise the Chair and Deputy Chair to oversee a further publicly advertised process for a lease, or leases over zones, at the site. The following functional zones within the kiosk building are identified:

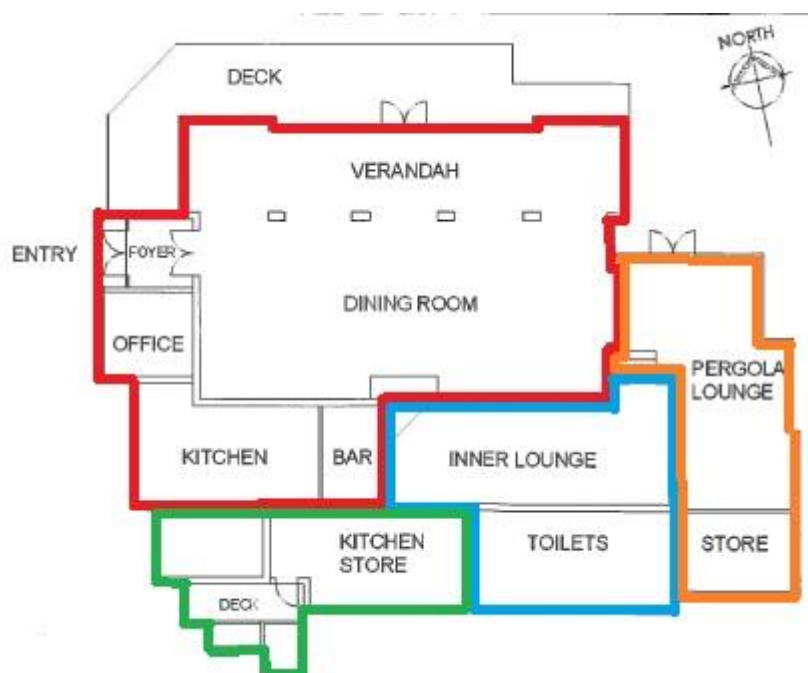


Figure 1: Functional zones within kiosk

10. Figure 1 above shows four apparent functional zones within the kiosk:
 - a. Green zone – this is a proven area for a separate ice cream offering.
 - b. Red zone – this is the preferred area for a café offering.
 - c. Blue zone – this could be a common zone for access and toilet use.
 - d. Orange zone – this should be the location for an Information Centre and crafts retail.
11. Proposals will be invited for any or all the zones, including any alternative arrangements.
12. The process will involve the first engagement with mana whenua, and in doing so invite all previous mana whenua submitters to make fresh proposals.
13. Management recommend that the delegation include a general discretion to view proposals and make a short list to be put before the Authority for decision.

Auckland Plan 2050

Authors: Dominic Wilson, Tūpuna Maunga Authority

| | |
|------------------------|--|
| Purpose | To update the Tūpuna Maunga Authority on the adoption of the Auckland Plan 2050 |
| Recommendations | That the Tūpuna Maunga Authority notes this report and the adoption of the Auckland Plan 2050 by the Auckland Council |

1. A submission on the draft Auckland Plan 2050 was adopted by the Authority at Hui 35 on 30 April 2018 and was received as a submission by the Auckland Council.
2. The Auckland Plan 2050 was adopted by the Auckland Council on 5 June 2018.
3. All of the amendments suggested by the Authority were adopted in full although on one occasion the issue was addressed using different language. The Authority sought an amendment to Focus Area 4 Focus Area 4 of the Environment and Cultural Heritage Outcome as follows:

Planning controls, such as those protecting viewshafts to and between the Tupuna Maunga and height sensitive areas, will also be crucial to avoid any impacts on the values associated with these sites.
4. The Auckland Plan 2050, as adopted, included the following amendment to cover the tenor of the Authority's proposal:

The Tūpuna Maunga, in particular, are vulnerable to new development compromising people's enjoyment of them, and their long term protection.
5. The Auckland Plan 2050 is not presently available on line, but a track-changed version can be viewed in the relevant Planning Committee agenda on the Auckland Council's website as follows:

http://infocouncil.aucklandcouncil.govt.nz/Open/2018/06/PLA_20180605_AGN_6733_AT_files/PLA_20180605_AGN_6733_AT_Attachment_60271_1.PDF

Registers

Authors: Paul Puru; Mike George, Tūpuna Maunga Authority

| | |
|------------------------|--|
| Purpose | To provide the Tūpuna Maunga Authority with updated registers for: <ul style="list-style-type: none">a. Health & Safety (Attachment A)b. Events (Attachment B)c. Media coverage (Attachment C) |
| Recommendations | That the Tūpuna Maunga Authority note the attached Registers, which have been updated since Hui 36 (28 May 2018). |

Registers

1. Attachment A - Health & Safety Register.
2. Attachment B - Events Register.
3. Attachment C - Media Register.

Attachment A: Health and Safety Register

| Hui reported to | Maunga | Summary of incident | Number of any near misses | Outcome of investigations into any incidents and near misses | Health and Safety management matters arising | Actions Taken |
|-----------------|------------|---|---------------------------|---|--|--|
| Hui 37 | Maungawhau | Push bike almost crashed into gate early weekend morning | 1 | Contractor had just opened gate at Maungawhau when push bike came speeding down and almost crashed into it. Early morning in the weekend before Maunga opened | Potential injuries to cyclists | Contractor asked the women to slow down Reviewing speed calming measures Staff are planning to be on site next week to hand out information on the rules on the maunga. |
| Hui 37 | Maungarei | Rocks and holes in Gollan Rd extra mowing area making it dangerous to mow | | Contractors reported that area has numerous rocks just beneath the grass and holes within Gollan Rd extra mowing area. | Creating hazards for contractors performing the work. Damaging mowing machinery | Reviewing size of mowing area, removing bank from extra mow, as well as the methodology used to mow this extra area. |
| Hui 37 | Maungawhau | Mountain Bike near miss | 1 | Friends of Maungawhau volunteer was almost knocked over by a mountain bike, commented that it appears that there are more bikes around on the tracks | Potential injuries to pedestrians from bikes Rutting of tracks making them unsafe | Continue to get contractors and Friends of Maungawhau to report these incidents to compile some data Staff are planning to be on site next week to hand out information on the rules on the maunga. |

| Hui reported to | Maunga | Summary of incident | Number of any near misses | Outcome of investigations into any incidents and near misses | Health and Safety management matters arising | Actions Taken |
|-----------------|--------------------------|---|---------------------------|--|---|---|
| Hui 36 | Maungarei | Small grass fire that deliberately started on the side of the maunga by young teenage kids. | | | | Reviewed incident report from the Fire Service and advised by local police that they were unable to prove that the group of young people they stopped and spoke on the maunga had lit the fire. They had been referred to youth aid. The Police file number for this incident is 180509/1541 |
| Hui 36 | Maungawhau | Wasps | | Reports of wasps flying in various areas near the track and along they summit access road. | | Contractor called out but was unable to locate any nest sites. Maintenance contractors are aware of the areas reported and will continue to monitor. |
| Hui 36 | Ohuiarangi | Outstanding storm response work | | Ohuiarangi - Large pine that has failed and is hung up in an adjacent pine. | | Work has been scheduled in for May 23, 24 th to remove the tree. The area is currently taped off. |
| Hui 35 | Maungakiekie and Ōtāhuhu | Reports of drinking and anti-social behaviour after-hours on these Maunga. | | Reported to police incidents on both Maunga | Harassment of other people on the Maunga Glass and bottles creating hazards in carpark | Police to add these sites to area patrols |

| Hui reported to | Maunga | Summary of incident | Number of any near misses | Outcome of investigations into any incidents and near misses | Health and Safety management matters arising | Actions Taken |
|-----------------|-----------------------------|---|---------------------------|--|---|---|
| | | | | | Unsafe areas for when children are playing | |
| Hui 35 | Maungakiekie | Woman fell off flying fox due to confusion in how long she had hold onto the rope for. She had to be taken to hospital to check her spine | | No structural defects on flying fox. Was inspected after this incident. | Injuries sustained while using flying fox, potentially serious | Sought advice on what the industry best practice is for signage on this equipment. Will be putting up a parental supervision recommended sign. |
| Hui 35 | Maungarei | Twisted knee walking to summit due to track instability | | | Injuries sustained while walking to/ from the tihi, potentially serious falling in the crater | Emailed person advising tihi tracks are part of our current capital project plan and looking at solutions to track safety in the meantime. |
| Hui 35 | Maungarei | Rolled an ankle on summit road at 6am moving out of the way of a car | | | Injuries sustained while moving out of the way of cars, potential to fall back into traffic | Emailed person advising that cars will generally be coming off the maunga. |
| Hui 34 | Ohuiarangi/Pi geon Mountain | Woman sprained her ankle in the grass area where the BMX bike track used to be. The grass was long and she lost her balance when she stepped on a section of uneven ground. | | Followed up with contractors to investigate and confirm when grass was going to be cut | Long grass growing over hazards in or on the ground. | Confirmed that the Maunga was scheduled for mowing and instructed contractors put up signs warning people of un-even ground until the grass is mowed. Contractors to look out for trip hazards in the mown areas and report as soon as possible. |

| Hui reported to | Maunga | Summary of incident | Number of any near misses | Outcome of investigations into any incidents and near misses | Health and Safety management matters arising | Actions Taken |
|-----------------|------------------------------|---|---------------------------|--|---|--|
| Hui 34 | Te Tātua a Riukiuta/Big King | Reports of people getting injured from their feet slipping in holes in the ground. (on mowed grass areas that are off the track) | | | Several small holes in the ground – made worse by dogs digging them out making them a hazard to people. | Some holes have been filled in previously but have been dug out. Area where the holes are concentrated in has been fenced off and will be re-surfaced and re-grassed. Continue to investigate what is the cause of these holes. Unsure if it could be due to rabbits, humans with metal detectors, dogs |
| Hui 34 | Maungarei/ Mt Wellington | Woman in her vehicle was locked in by security at 8.50pm. When she got out of her car at the exit gate to read the sign she was approached from behind by a male who pulled her to the ground. She was able to push him away and get back to her car. | | Security contractor asked to provide a vehicle log relating to this event. | Safety of people that are locked in awaiting vehicle | Update as of 18 June 2018: A bigger sign has been installed at site explaining gate opening and closing times. Staff have followed up with the security contractor to ensure they are following the correct procedure. They have also followed up with the Auckland Council call centre to ensure they have the right information about unlocking procedures. |

| Hui reported to | Maunga | Summary of incident | Number of any near misses | Outcome of investigations into any incidents and near misses | Health and Safety management matters arising | Actions Taken |
|-----------------|-----------------------------|---|---------------------------|--|--|---|
| | | | | | | The upcoming capital project at Maungarei with regards to access ways will resolve this issue. |
| Hui 34 | All Maunga | PROACTIVE: Operations staff are now outdoor first aid qualified | | | | Completed a first aid course in February Currently checking on the location of EPERBS on or near the maunga |
| Hui 34 | Ohinerau/Te Kopuke | PROACTIVE: Management have scheduled in regular hikoi to the Maunga to specifically look health and safety issues and to update our risk registers. | | | | Ohinerau and Te Kopuke were completed in February 2018 |
| Hui 33 | Maungakiekie /One Tree Hill | Asbestos found in 2 rubbish bins near the playground carpark by contractors from the Cornwall Park Trust. | | | | The 2 areas around the bins were closed off to the public and an asbestos removal contractor was immediately contacted. The asbestos was removed the following morning and the bins de-contaminated. |

| Hui reported to | Maunga | Summary of incident | Number of any near misses | Outcome of investigations into any incidents and near misses | Health and Safety management matters arising | Actions Taken |
|-----------------|------------------------------|---|---------------------------|---|--|---|
| Hui 33 | Ohinerau | Emergency Access required by ambulance into the Maunga. (Elderly person with suspected broken ankle) The NZ Fire Service were called out to assist with gaining access. | | | | The padlock on this gate is a Watercare lock. Followed up with Watercare that the NZ Fire Service have keys to this lock. |
| Hui 33 | Puketāpapa | Grass fire on Puketapapa. Notified by contractors of a small fire that had been extinguished near the cross at Puketapapa. | | | | Followed up with the NZ Fire Service to get details of the fire. |
| Hui 33 | Maungawhau | Advised that part of an old waratah was sticking out of the ground along an informal track. | | Contractor cut waratah below ground level, capped the sharp end and reinstated the track. | | Assessed area for similar hazards. |
| Hui 33 | Te Tātua a Riukiuta/Big King | Dog not under control in an off leash area. Advised by a walker of an incident where a dog nipped her leg. | | Vehicle registration of dog owner obtained. | | Informed the Animal Control team of the incident details and will keep the walker informed of the outcome. |
| Hui 32 | All Maunga | Received inquiries from people concerned about the fire risk in the maunga. | | Contractors have started cutting firebreaks this week and they will be completed before Christmas | | Continue to monitor these firebreaks and the fire risk index over the summer |

| Hui reported to | Maunga | Summary of incident | Number of any near misses | Outcome of investigations into any incidents and near misses | Health and Safety management matters arising | Actions Taken |
|-----------------|-----------------------------|---|---------------------------|---|--|---|
| Hui 32 | Maungakiekie /One Tree Hill | Customer sprained her ankle from falling in a hole on the edge of the playground matting. | | Contractors were originally given the incorrect playground equipment site to check, but have confirmed it was the area around the rocktopus and will be checking this site shortly. | | Fill any gaps and check matting around this piece of equipment |
| Hui 31 | Mātukutururu | New full facilities contractor has undertaken a site inspection and indicated there are a number of old redundant assets that have been covered over with grass and need attending to, eg disused water and waste pipes | 0 | The contractor has reported these issues to management for a decision. | | A site visit with the full management plan to review risk registers is occurring on Friday 24 with the contractor |
| Hui 31 | All Maunga | PROACTIVE: Management has met with the new contractor and outlined Health and Safety expectations as part of their induction with the Tūpuna Maunga Team. A peer review has taken place of the new contractors Health and Safety site specific plans by the Health | 0 | The peer review indicated a general level of satisfaction with a number of minor details for the contractor to elaborate on. | | Staff are continuing to work with the contractor to provide further details in the plans. Staff are meeting regularly in the first weeks of the new contract to ensure the appropriate Health and Safety culture is developed. |

| Hui reported to | Maunga | Summary of incident | Number of any near misses | Outcome of investigations into any incidents and near misses | Health and Safety management matters arising | Actions Taken |
|-----------------|--|---|---------------------------|--|--|---|
| | | Safety and Wellbeing department | | | | |
| Hui 31 | Maungarei/ Mt Wellington Māngere | PROACTIVE: A health and safety plan has been signed off as part of the night shooting contract | 0 | | | <p>Public notices have been issued advising of night shooting at Maungarei and Māngere prior to work beginning from 20th of November</p> <p>A health and safety plan for the use of magtox has been peer reviewed by the Auckland Council Biosecurity team</p> <p>Training will be made available for our Kaihautū Tiaki Koiora to obtain her Controlled Substances Licence.</p> |
| Hui 31 | Māngere | It has been brought to our attention that there is suspected use of drugs being undertaken at Māngere Maunga making it risky for workers and contractors to be working after hours. | 1 | The police have been notified of the issue. | Managing the risk of staff and contractors working in public spaces after hours. | <p>The police have been notified of the issue.</p> <p>Health and safety plans to be reviewed to ensure there are appropriate controls for managing the risk.</p> |

| Hui reported to | Maunga | Summary of incident | Number of any near misses | Outcome of investigations into any incidents and near misses | Health and Safety management matters arising | Actions Taken |
|-----------------|------------------------------|---|---------------------------|--|--|--|
| Hui 30 | Maungakiekie /One Tree Hill | Received feedback regarding section of road alongside Olive Grove Track. Expressed concern that the road was very narrow and a danger to pedestrians if vehicles where to go over the edge. | | Investigating this issue further to determine what is the best action to take. Considering installing reflective cats' eyes to alert drivers they are near the edge. | Narrow section of roadway that is above a footpath. | Confirmed 30km signage is in place. Look at scope of the Olive Grove Track project and see if raised kerbing can be put up. Find an interim solution with the use of cats eyes, rumble strip etc. |
| Hui 29 | Maungakiekie / One Tree Hill | Strands from the flying fox cable broke off and unravalled. Reported by the maintenance contractor and closed immediately. | 1 | The entire cable was replaced. The playground installer was not able to determine the cause of failure | | The flying fox was padlocked closed immediately and not open until the cable was replaced. Installers asked to investigate cause of failure. Contractors are monitoring the new cable closely. |
| Hui 29 | Takarunga /Mount Victoria | Street light that lights up pathway from tihi carpark down to the Bunker is not working | 0 | Maintenance contractors unable to access current street light due to location (no vehicle access) and its height. Looking into alternative lighting options for this site. | Pathway is not lit up in the evenings for people using it. | Advised the Devonport Folk club of restrictions to access the light and that other options are being considered. They have informed all members to bring torches to get to the bunker in the evenings. |
| Hui 29 | Maungarei | Contractors were working on the drains on the maunga and were intercepted by a mana whenua person who informed them that there was midden material in the drains which could mean possible kōiwi as well. | 0 | Contractors ceased work immediately and coned off drain area. Heritage staff, Tūpuna Maunga staff and mana whenua person visited the site to investigate. | Spiritual implications | Drain coned off and no work is to commence until the protocol for the process of the works has been written by Heritage Team and agreed to by the Tūpuna Taonga Trust. |

| Hui reported to | Maunga | Summary of incident | Number of any near misses | Outcome of investigations into any incidents and near misses | Health and Safety management matters arising | Actions Taken |
|-----------------|-------------------|--|---------------------------|---|---|---|
| Hui 29 | Te Pane o Mataoho | A pedestrian from the community was walking up to the tihi of the maunga and suffered a fatal heart attack. | 0 | Police/Emergency services were notified by park users. Park contractors applied CPR and first aid until emergency services had arrived. Contractors cornered off areas and a Rāhui (restriction) was applied. | | Mana Whenua Kaumātua and Kuia cleansed and lifted the Rāhui (restriction) off the area. |
| Hui 28 | Maungawhau | Cyclist had a near miss with the exit chain while biking down the Clive Road exit. | 2 | There are 2 reflective sleeves that cover most of this chain when it is up. | The sleeves are regularly checked to ensure they are in working condition. | Management are looking at options to slow cyclists down when they are riding downhill |
| Hui 28 | Maungakiekie | Reported that an assault took place up near the tihi on the 14 th of June at midday. It was reported by the police that it was an attempted aggravated robbery and two couples were involved. | 1 | Police are currently working on the case. Cornwall Park Trust informed of incident, however there has been no contact with Cornwall Park Trust from the Police. | On-going prompt communication between police and the Tūpuna Maunga team for future incidents. Police informed of connecting with Cornwall Park Trust around accessing entrance way camera footage. | Police are investigating and victim has been spoken to by Tupuna Maunga team. On-going correspondence with Police, Cornwall Park Trust and the victim until the case is resolved. |
| Hui 26 | Maungarei | Bare footed visitor identified rusty spike of an old waratah (redundant and partially removed farming infrastructure) poking approximately 6cm out of the ground at the point near | 1 | Staff on site assessed as dangerous | Potential risk removed | Remaining section of rusty waratah removed with as little soil disturbance as possible and recycled |

| Hui reported to | Maunga | Summary of incident | Number of any near misses | Outcome of investigations into any incidents and near misses | Health and Safety management matters arising | Actions Taken |
|-----------------|-------------------|--|---------------------------|---|--|--|
| | | a track as a puncture wound hazard for walkers. | | | | |
| Hui 26 | Te Pane-o-Mataaho | Recent storm damage to group of old macrocarpas near summit track | 0 | N/A (no data on any near misses, but large branch fell very near one section of track) | Risk of tree failure and branches falling onto track | Arborist report info gathered. Tree maintenance work will be carried out to reduce the risk to of failure |
| Hui 26 | Maungawhau | Cyclist did not see exit chain that was still up at the Clive Rd carpark exit. (5.45 am) They rode into the chain causing damage to himself and his bicycle. | 1 | Staff assessed the chain and worked with our contractor to find a better solution. | Reflective tape on the chain gets worn out periodically from being dragged across the road during gate lock/unlocks. | Re-applied high visibility tape across this chain. Maintenance contractors will monitor the chain and re-apply as required. Hi visibility chain sleeves will also be put on. |
| Hui 26 | Maungakiekie | While walking near the archery club a visitors foot fell into a small sunken hole that was covered by kikuyu | 1 | Contractors located the hole and filled it in. | | Hole has been filled. |
| Hui 26 | Puketāpapa | Quarry face exposed following removal of weedy vegetation that was blocking views from the carpark below the tihi. | 1 | A section of mesh fence was put up and flax were planted previously to create a barrier for people. | Increased current fall risk as more weed trees were removed, the natural barrier was also being removed | Additional temporary fencing installed |

Attachment B: Events Register

| Hui reported to | Maunga | Applicant | Event Description | Event date | Status | Revenue |
|-----------------|--------------|---|-------------------|-------------------------|-----------|-----------|
| Hui 37 | Ōwairaka | Ron Crummer – Local school art installations on the maunga for celebrating Matariki | Community | 30/06/2018 – 08/07/2018 | Approved | No Charge |
| Hui 36 | Maungawhau | Epsom Girls Grammar School – Matariki Dawn Karakia | Community | 15/06/2018 | Approved | No Charge |
| Hui 35 | Ōwairaka | Mt Albert Presbyterian Church | Community | 01/04/2018 | Approved | \$90 |
| Hui 35 | Takarunga | Combined Churches of Devonport | Community | 30/03/2018 | Approved | \$90 |
| Hui 35 | Maungawhau | Auckland Down Syndrome Association | Community | 18/03/2018 | Approved | No Charge |
| Hui 34 | Maungawhau | ATEED | Photos | 05/03/2018 | Approved | No Charge |
| Hui 33 | Ōtāhuhu | What Now Live | Community | 10/02/2018 | Approved | \$660 |
| Hui 33 | Maungakiekie | Auckland Home Educators | Community | 08/02/2018 | Approved | No Charge |
| Hui 32 | Maungawhau | Our Volcanoes | Commercial | 14/12/2017 | Withdrawn | |

Tūpuna Maunga Authority Media Register June 2018

No Media Releases were issued during this period

Takarunga Pedestrianisation (Devonport Meeting)

1 June – Devonport Flagstaff
'Feelings run hot as maunga bosses front up'

Feelings run hot as maunga bosses front up

A 1370-signature petition, in opposition to a vehicle ban on Takarunga/Mt Victoria and calling for greater local consultation, was presented to the Tūpuna Maunga Authority chair Paul Majurey at a public meeting last week.

Majurey agreed to present the petition and convey the sentiments of the meeting to the Maunga Authority.

More than 100 people packed the Devonport Community House – easily filling the available seating and spilling out onto mats around the walls.

After Danny Watson welcomed the visitors, authority manager Nick Turoa's reply was interrupted by members of the crowd, with one shouting the authority were enemies not friends. Others complained about the use of Te Reo Maori instead of English and one man stormed out saying he could not understand what was being said.

When the floor was opened to the public, Laura Martin said Te Reo is New Zealand's language and she was disgusted "to hear the racism" at the meeting.

Danny Watson encouraged the meeting to show "community spirit" in welcoming the authority.

Chair Chris Mullane counselled the audience to honour each others' cultural history in seeking a "positive and collaborative outcome".

Geoff Chapple, leader of the action group that organised the petition also called for calm, saying, "The interface between the Maori and Paheka world is what makes New Zealand what it is." That didn't mean issues couldn't be debated, he said.

The petitioning group was concerned the plan to ban vehicles from cone summits was not plainly stated in initial Maunga Authority strategic plans, which were open for submission. It was a rushed decision and should not have been considered until individual plans for each mountain were developed, Chapple said.

There had been "a chilling effect" on the numbers of people – particularly those over 65 – going up the mountain since the ban was introduced, he said.

Having to ring up to get access to the mountain was embarrassing and led to people not doing it. The "wonderful anarchy of the mountain", with



Face to face... organiser Geoff Chapple hands the petition to Maunga Authority chairperson Paul Majurey

was closed.

In March, 167 'single visit' mobility-access codes were issued; in April this fell to 34; 17 had been issued by 24 May.

Maunga Authority chair Paul Majurey played down the significance of the figures, saying winter was influencing numbers.

Majurey said he did not agree with all of Chapple's points, and felt the authority had consulted locals. In addition to the submission process, the organisation's operations manager had attended a public meeting of the Devonport Community Network in February 2017, where he explained pedestrianisation.

The Maunga Authority co-governs Takarunga/Mt Victoria with Auckland Council, with representation from councillors and local-board members.

have lived in Devonport for 150 years. Many locals regard themselves as mana whenua, just like Maori, Rayner said.

Laurie Spinley, a Devonport resident of 80 years, said locals had always helped each other and did things for the community, a spirit the authority hadn't seemed to recognise.

"Just consult people and ask them before you barge in and upset them."

Devonport Folk Club's members were upset that the construction of the barrier arm made it more difficult to get to The Bunker, and someone had to stand at the gate in the rain to man it.

Jill Crow, a member since 1974, said it was "an affront" to the club and especially its president Roger Giles, who had been the unofficial caretaker on the mountain for 50

lots of people coming and going had been lost. Figures presented to the meeting showed mobility-access requests have fallen since access



“We followed the process we thought was correct.”

Majurey said a lot of feedback had been received from Devonport and many people supported the pedestrianisation of the mountain.

The authority had been involved in a Devonport-wide rat eradication plan, he said. From the authority’s perspective, the “on trust” code system for limited vehicle access was working well. In the short to medium term, the authority would be working on improving tracks on the mountain, and controlling weeds and pests. Contractors and ambulances would always need to drive to the top, but a non-permeable road surface may be laid at some time, he said. There are no plans to commercialise the mountain.

Locals spoke of their love and passion for the mountain going back generations: Bill Rayner is descended from the Wynyard family who

years.

Local-board member Mike Cohen was disappointed councillors had not been forceful enough in putting Devonport residents’ views to the authority.

Devonport is different to Mt Eden, he said, and Maori do not have a monopoly on a spiritual connection to the mountain.

Miriam Beatson said Takarunga had been “looking down on me my whole life” and she regarded the barrier arm as “a stab into the flank of the mountain I love”.

The meeting voted to continue its campaign for the Maunga Authority to be more consultative with Devonport people.

• Former minister of Treaty negotiations Chris Finlayson, who enacted the legislation to create the Maunga Authority, has agreed to meet with the action group to discuss future moves.

1 June – Devonport Flagstaff ‘Editorial: Intolerance mars showdown over maunga access’

JUNE 1, 2018

Editorial

THE DEVONPORT FLAGSTAFF PAGE 7

Intolerance mars showdown over maunga access

Intolerance and racist undertones simmered alongside parochial Devonport passion at the Takarunga/Mt Victoria public meeting last week.

One of the petition organisers, Danny Watson, gave an extended Maori welcome for the Tupuna Maunga Authority members and staff who had accepted the invitation to come and hear local grievances.

Maunga Authority manager Nick Turoa was halfway through his response when calls from the crowd such as “speak a language we can all understand” and “is this all going to be held in Maori?” echoed around the hall. One member of the audience left in protest.

Another attendee, Laura Martin, was so appalled she later used her speaking time to call the meeting to account for the racism she identified in what she had seen.

The behaviour of the crowd was poor – embarrassing even. Devonport should be thankful no national media were there to record it. At worst it was racism; at best it was very bad manners to visitors to our “Devonport home”. Why let Danny have his say and then shout down the authority?

I would have thought Maori welcomes and the consequent reply are now so much part of New Zealand society that they would have become an accepted way of starting a meeting.

Fortunately proceedings calmed down and the more generous heart of Devonport rose to the surface. Locals whose families had lived in

Here’s the rub. Over the last decade, locals have felt left out of decision-making. For example, huge numbers of Devonport people joined the fight to save land at Fort Takapuna from development. Some of it became park, but then the government disposed of some of it in a Treaty settlement, with no consultation locally.

Maunga petition organiser Geoff Chapple said working to the letter of the law, as the Maunga Authority has done, may be correct by statute, but it was not always right. It is a good point. Why didn’t the authority start off in a more traditional way and have a series of hui around Devonport to thrash out issues and concerns?

The fact the authority came to Devonport to hear locals’ concerns – albeit belatedly – is progress. However was it consultation? Maunga Authority chair Paul Majurey failed to mention accelerated moves for Maungauika/North Head to come under the authority were to be discussed this week.

There are opportunities when Maungauika/North Head comes under the auspices of the Maunga Authority. A ‘friends-of-the-mountains’ type of group, which could feed grass-roots ideas into the mix is likely. And with two mountains to look after in Devonport, it would be great if the authority set up a small management office in the town. It would be excellent for the welfare of the mountains, and a symbol of working with the community rather than above it, and as a place to take on local ideas and passion.



In full flight... Danny Watson welcomes the Maunga Authority

the area for 150 years spoke of their love for the mountain. They are its guardians and protectors, just as Maori are. It is sacred to them as well. They wanted to have a say, from a grass-roots perspective, on plans for the mountain.

I stand by my stance that the mountain should be vehicle-free. But let's hope in the future local views are better considered and, in a true partnership, authorities make use of the commitment to Devonport that we all share.

The Takarunga/Mt Victoria story at a glance

- The summit of Takarunga/Mt Victoria became vehicle-free on 1 March, with a barrier erected on the mountain road.
- Vehicle access for those with limited mobility is available by calling the Maunga Authority to get a code. Mountain users such as the Michael King Writers' Centre, The Devonport Folk Club and Devonport Tours have negotiated access rights.
- An action group of Devonport locals – Cam Calder, Geoff Chapple, Mike Cohen, Ian Free, John Retimana and Danny Watson – launched a petition opposing the barrier and what they saw as a lack of consultation with the local community.
- A public meeting, attended by the Maunga Authority and more than 100 people, was held at Devonport Community House last week.
- Authority chair Paul Majurey accepted the 1370-signature petition and agreed to take it and feedback back to the authority for discussion.
- The barrier arm and vehicle ban will stay.
- A 'Friends of Mt Victoria'-style group is likely to set up to liaise with the Maunga Authority.



**Appalled at racism...
Laura Martin**



**Locals make themselves heard...
Laurie Spinley (left) was another who spoke. With all seats taken, the crowd spilled out onto the floor**



Takarunga Pedestrianisation Poll

1 June – Devonport Flagstaff



**By Rob
Drent**

The Flagstaff Notes

How many people are really opposed to the vehicle ban on Takarunga/Mt Victoria? Impossible to know in absolute terms but a quick Flagstaff facebook poll last week showed 55% were in favour of no cars.

Devonport Flagstaff created a poll.
24 May at 21:35 · 🌐

Quick Poll:
Do you agree with the decision of "no cars up Mt. Vic"?

59% Yes

41% No

This poll has ended. 71 Votes

Like Comment Share

1 share

Maungauika Transfer

1 June – Devonport Flagstaff
'North Head transfer to Maunga Authority brought forward'



North Head transfer to Maunga Authority brought forward

The transfer of Mangauika/North Head from DoC to the Tūpuna Maunga Authority could happen as early as 1 July 2018.

It had been anticipated the handover would occur in 2021/22, said a report to the authority tabled on Monday.

Following the Maunga Authority hui, a paper was to go to the Auckland Council Governing body on 27 June, recommending the transfer proceeds.

A letter from Auckland Council to Maunga Authority chair Paul Majuery on 18 May says

agreement between council and DoC had been reached. It involves a payment by DoC in "recognition of deferred asset-maintenance costs, and a further two years of management

To page 2

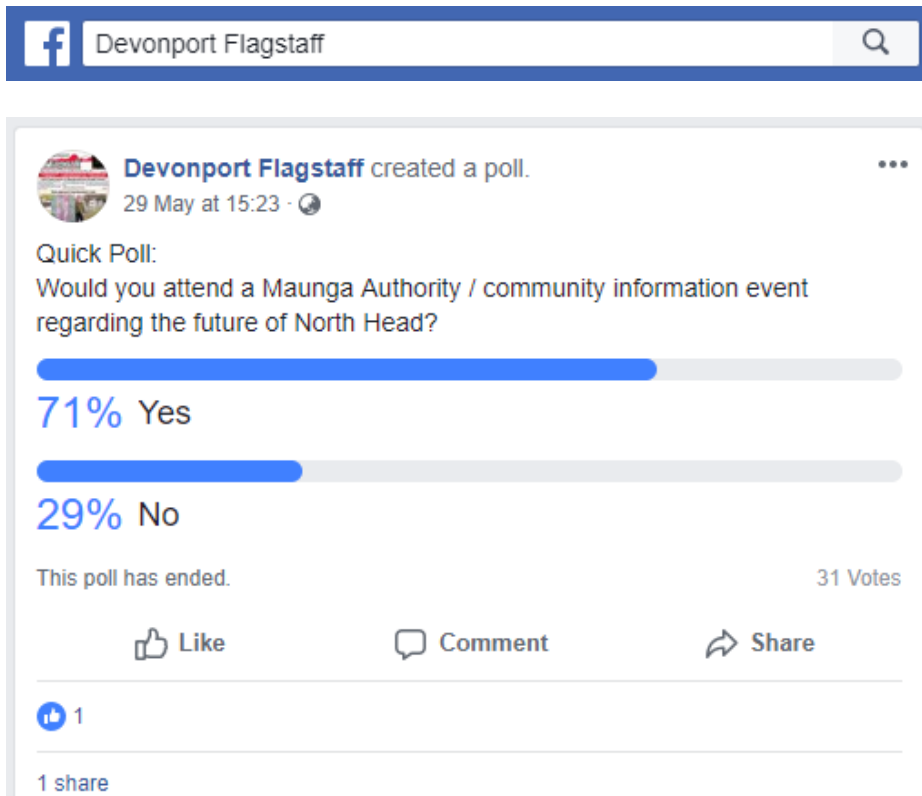
From page 1

Early transfer of mountain

by the Department" under the direction of the Authority to June 30, 2020.

This includes further contributions to maintenance costs and staff time.

No mention at this stage is made of any vehicle bans on the mountain.



OnzO bike – Maungawhau crater

5 June – NZ Herald
'Hirers leave firm hunting high and low for bikes'

Hirers leave firm hunting high and low for bikes

Vaimoana Tapaleao

Funny, annoying or just mean?
A shared OnzO bike has been found parked at the bottom of a crater at Auckland's Mt Eden.

A member of the public, Merrion Baker, saw one of the distinctive black and yellow bicycles while out for some exercise yesterday.

"After going for a morning stroll, an OnzO bike was spotted at the bottom of the Mt Eden crater," she told the *Herald*.

The bike is part of a hundreds-strong fleet that exploded on to the scene after being launched in Auckland late last year.

The bikes, which can be found parked outside various places in and around the city, are activated via a smartphone app and cost 25 cents per 15 minutes to hire.

The bike-sharing company says its aim is to: "Provide affordable access



Merrion Baker spotted this distinctive OnzO bike at the bottom of a crater at Auckland's Mt Eden.

Photo / Merrion Baker

to bicycles, solving the last kilometres of travel."

After seeing the bike, Baker checked the company's app site – which shows where every available bike is at any given time.

"[I] found it showed on their app," she said.

At the site yesterday afternoon, a *Herald* photographer said tourists stopped to point and take photos. The area was muddy and slippery and it

would have taken a lot of effort to get the bike down there and back up.

Min Kyu Jung, of OnzO, said they had a team of field operators to go out to such incidents.

"Obviously we discourage people from leaving bikes where they shouldn't be."

It was not the first time an OnzO bike had turned up in a peculiar spot: with bikes hoisted up on trees and appearing on the app as being out on the water near the Viaduct. At least one bike found its way on to Trade Me, a seller trying to make a profit until the sale was shut down.



Jung said it was expensive and the company was now hiring more field operators for this reason.



In one incident, a field operator was called out to a bike in a tree. It had been secured heavily with ropes.

The firm is due to introduce moves to limit people's ability to access bikes because of such behaviour.

Te Tātua a Riukiuta maintenance

6 June – Facebook Page ‘Make Big King a Better Dog Park’
Post from Puketāpapa Local Board Deputy Chair, Julie Fairey

 Make Big King a better dog park 

 **Julie Fairey**
6 June at 16:11 



Bit of an update on chats with Tupuna Maunga Authority, who are responsible for the park. They are going to be having an information stall at the Manu Aute Kite Day over on Mt Roskill / Puketapapa / Pukewiwi on July 8th, which it might be useful for people to check out.


In the next year or so TMA will be working on individual maunga plans, and talking with local communities about those as they work through them, now that they are finishing up the regional picture bits. In the meantime they generally aren't undertaking plantings and are letting grass grow long etc, as they see the spaces as not being finely manicured (as opposed to say Monte Cecilia Park) and they don't want to do work that then needs to be undone once they have more specific plans.

There are contractors working on both general maintenance and weed control (as well as the volunteer group Friends of Te Tātua a Riukiuta (Big King, Three Kings)) but reports from park users such as yourselves are a big help for getting issues addressed quickly. You can call them in to council on 3010101.

The area on top of the large water reservoir (the main dog area) it turns out has special status and control by Watercare, because of the reservoir, and that complicates maintenance and the like there. I've heard conflicting reports about Watercare plans to remove that reservoir (and the one on top of the hill) recently.

I think that's all I have at the moment, any questions please feel free to comment and I'll see what I can find out. Thanks for your love and care for the maunga.

 **Trudy Dickinson** Thanks for the update. I don't mind the slightly wild state but I do worry about the paths / steps becoming overgrown and slippery.
Like · Reply · 5d  1

 **Valeria Burrows** I am happy for the grass to be a bit longer (more habitat for insects) but the muddy paths are a real health and safety issue. Water is collecting in a few areas and these cannot be safely walked over. They need to at least dump some gravel on these areas before someone breaks an ankle or leg.
Like · Reply · 5d

| | |
|------------------------|--|
| Prepared by | Mike George Kaiwhakahaere Whakapā Hononga Manager Communications and Partnerships |
| Media Enquiries | Please direct all media enquiries to: Mike George, Manager Communications and Partnerships mike.george@aucklandcouncil.govt.nz , 027 212 4512 |
| Spokesperson | The Chair of the Tūpuna Maunga Authority is the media spokesperson. |

Stardome presentation

Verbal presentation.