

TE MAHERE Ā-ROHE O
ŌTARA KI PAPATOETOE 2017

Te Mahere ā-Rohe o Ōtara ki Papatoetoe 2017



Mihi

Tēnā kia hōea e au taku waka mā ngā tai mihi o ata
e uru ake ai au mā te awa o Tāmaki
ki te ūnga o Tainui waka i Ōtāhuhu.
I reira ka tōia aku mihi ki te uru ki te
Pūkaki Tapu o Poutūkeka,
i reira ko te Pā i Māngere.
E hoe aku mihi mā te Mānukanuka o Hoturoa
ki te kūrae o Te Kūiti o Āwhitu.
I konā ka rere taku haere mā te ākau
ki te pūaha o Waikato, te awa tukukiri o ngā tūpuna,
Waikato Taniwharau, he piko he taniwha.
Ka hīkoi anō aku mihi mā te taha whakararo
mā Maioro ki Waiuku, ki Matukutūreia
kei konā, ko ngā Pā o Tāhuna me Reretewhioi.
Ka aro whakarunga au kia tau atu ki Pukekohe.
Ka tahuri te haere a taku reo ki te ao
o te tonga e whāriki atu rā mā runga i ngā hiwi,
kia taka atu au ki Te Paina,
ki te Pou o Mangatāwhiri.
Matika tonu aku mihi ki a koe Kaiaua
te whākana atu rā o ō whatu mā Tīkapa Moana
ki te maunga tapu o Moehau.
Ka kauhoetia e aku kōrero te moana ki Maraetai
kia hoki ake au ki uta ki Ōhuiarangi,
heteri mō Pakuranga.
I reira ka hoki whakaroto ake anō au
i te awa o Tāmaki mā te taha whakarunga
ki te Puke o Taramainuku, kei konā ko Ōtara.
Ka rewa taku mihi ki runga ake o Kohuora,
kātahi au ka toro atu ki te Manurewa a Tamapohore.
Ka whakatau aku mihi mutunga
ki runga o Pukekiwiriki
kei raro ko Papakura
ki konā au, ka whakatau.

Ngā upoko kōrero

■ He kōrero mai i te heamana.....	4
■ He aronga poto i tā mātou mahere.....	6
■ Te rohe ā-Poari o Ōtara ki Papatoetoe.....	8
■ He kōrero mō ngā poari ā-rohe me ā mātou mahere.....	11
■ Te whakawhanake i tā mātou mahere	12
■ Ngā whakaotinga:	
■ 1. Te hurihanga hōu o Manukau.....	14
■ 2. Te whakarauora i ngā pokapū ā-tāone.....	19
■ 3. Ngā papa rēhia me ngā whakaurunga e ea ai ngā hiahia o te iwi	23
■ 4. He taiao taketake hauora	26
■ 5. Hapori whaimana, whakarauhī me te tōnui tonu.....	31
■ 6. Whakamānawa ana i te taiohi me te hunga kaumātua	35
■ 7. He māmā te haere noa.....	38
■ Te whakatutuki i tā mātou mahere.....	41
■ He kōrero pūtea tahua	44
■ Āpitianga 1: Tirohanga take pūtea whānui.....	46
■ Āpitianga 2: Kaupapa ā-rohe me ngā paerewa ā-mahi.....	48
■ Ngā mema o tō Poari ā-Rohe o Ōtara ki Papatoetoe.....	50
■ Papa kupu.....	52

I te uhi pukapuka: I whakapaitia te papa rēhia o Allenby i Papatoetoe e te Poari ā-Rohe o Ōtara ki Papatoetoe.



He kōrero mai i te Heamana



Malo lava le soifua maua ma le lagi e mamā, (Kia ora, kia piki te oranga, kia māhora te rangi e tū iho nei).

Nōku te wāimarie ki te hora i te Mahere a te Poari ā-Rohe o Ōtara-Papatoetoe. Kei roto ko ngā whiringa matua o te poari mō ngā tau e toru e tū mai nei me kō atu. I rawe ā koutou whakahokinga kōrero, he rahi tonu o aua whakaaro pai kua tāpirihia atu. Ngā mihi ki a koutou i whai wāhi mai.

I kī mai koutou ko tō hiahia me whakapai ake ngā pokapū tāone, ngā papa rēhia me ngā wāhi whakaurunga, kia whakatikahia te Roto o Ōtara, me te rahi atu hoki o ngā take papori, pērā i te taiohi kore mahi, me te raru o ō tātou hapori i ngā kaikino rarauhea me te mahi kāmura.

He whitu ngā whakaotinga matua o te mahere e kōpaki ana i te nuinga o ngā whakaaro i homai e koutou ki a mātou.

Ka kite koe mō ia kaupapa he whakaritenga ā-poari e taki ana me te tohi i ngā hoa taunaki me ngā rōpū hei hāpai i ngā mahi e whai hua ai ō tātou hapori.

Kua herea e te mahere te poari kia mahi tahi me Panuku Development Auckland, te ringa whanake o te kaunihera, ki te huri i a Manukau hei pokapū matua kaipakihi, whāinga mātauranga, whakangahau me te whai oranga.

Ka whakaritea ana he kaupapa me te hōtaka hōu, e mōhio ana mātou i Tāmaki Makaurau whānui he maha ngā wero koia tō mātou kore e whiwhi ki te tahua katoa e hiahia ana mātou. Me āta whakarite mātou, koia te mahere e tohu nei ki ngā tino kaupapa me ngā hōtaka whaihua ake ki te rohe.

Ka rārangitia e mātou te tahua pūtea e kimi nei mātou mā roto atu i te Tahua Pūtea 10-tau a te kaunihera. E tono ana tēnei mahere kia 14 ngā kaupapa e tautokohia e te Tahua Pūtea 10-tau. I muri i te kōwhiringa i ā koutou kōrero mai, ko ēnei e toru ngā mea nui rawa:

- he papa hākinakina takitini i Ngāti Ōtara
- he whare tīni kākahu hōu me ōna wāhi horoi ki te papa rāhui o Kingswood
- He papa tākaro ki te Papa Rēhia o Hayman.

“
Malo lava le soifua maua
ma le lagi e mamā
(Kia ora, kia piki te oranga,
kia mahora te rangi e tū iho
nei).

E mihi tonu ana ki te hunga i tuku kōrero
mai. Ngātahi he nui tonu ngā mea e oti i a
tātou mō te painga o Ōtara ki Papatoetoe.

Ngā mihi



Lotu Fuli

Heamana o te Poari ā-Rohe o
Ōtara-Papatoetoe

He aronga poto i tā mātou mahere

Ka whakamau mātou ki ngā whakaotinga e whitu hei arataki i ā mātou mahi e hua ai a Ōtara ki Papatoetoe hei hapori pai ake mō te katoa. E rārangi i raro iho nei ō mātou tūmanako.



Te Papa Rēhia o Hayman.

Whakaotinga 1: Te hurihanga hōu o Manukau

Ka noho a Manukau hei pūmanawa ā-tāone mō tō tātou rohe: he pekanga te aronuia e te manuhiri, he pokapū kaipakihi, wāhi kohohoko, kāinga noho, ako, mahi me te tākaro.



Ngā kaihokohoko o te Kokonga o Hunter.

Whakaotinga 2: Te whakarauora i ngā pokapū ā-tāone

He whakarauora i ngā pokapū ā-tāone o Ōtara, Papatoetoe Tawhito, te Kokonga o Hunter e pakari ai te tū i ō tātou hapori.



Te marae ātea ā-tāone i te Papa Rēhia o Ōtamariki.

Whakaotinga 3: Ngā papa rēhia me ngā whakaurunga e ea ai ngā hiahia o te iwi

E wātea ana ki ō tātou hapori ngā papa rēhia me ngā whakaurunga e tupu ai te aronga tuakiri me te tūhononga, e piki ai te whai wāhi atu.



Te rangi whakapai i Ngā Tiriti Tau o Ōtara.

Whakaotinga 4: He taiao taketake hauora

He rawe ki a tātou ngā taiao taketake e hua ana te hauora, he kiora urutā, otaota me te para kore.



He whakanui i ngā tini tikanga rerekē i roto o Papatoetoe.

Whakaotinga 5: Hapori whaimana, whakarauhī me te tōnui tonu

He manawanui te iwi o Ōtara-Papatoetoe ki tō rātou rohe, he ngākau maioha me te noho āhuru, he tautoko i a rātou ake, he pai te āhei atu ki ngā tikanga kawē pāhihi.



Te Tira Taiohi o Ōtara ki Papatoetoe.

Whakaotinga 6: Whakamānawa ana i te taiohi me te hunga kaumātua

E aronuitia ana te taiohi me te kaumātua e whai wāhi hoki ki ngā mahi me ngā whakahaere a te hapori.



Te māwhitiwhiti ā-pahi o Ōtara.

Whakaotinga 7: He māmā te haere noa

He māmā noa te haere mā raro, ā-pahikara, pahi, tereina me te motokā a te katoa.

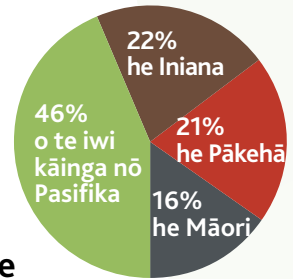
Te rohe ā-Poari o Ōtara ki Papatoetoe





He
86,300
tāngata tōna rahi

Neke atu i te
100
momo iwi kei
Ōtara ki Papatoetoe



Ka kōrerohia te reo Hāmoa e te 11,000 tāngata, ko te reo Hinī e te 8,000 tāngata



11 ngā mana whenua, iwi/hapū ka whaipānga i te rohe o Ōtara ki Papatoetoe

He kāinga tātou ki te:
nui atu i te

110



papa rēhia, papa hākinakina ā-rohe

4



ngā whare pukapuka

3



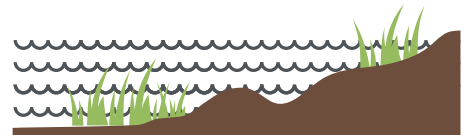
pokapū ā-rēhia

2



pokapū ā-hapori.

He āhua taketake motuhake ka whai wāhi atu ki te ākau Papa Rāhui o Puhinui



Pūkete raraunga: Ko ngā Whakataua ā-Iwi Tata o Aotearoa (2015) me ngā Tatauranga ā-Iwi 2013



Te Whare Nui ā-Tāone o Papatoetoe.

He kōrero mō ngā poari ā-rohe me ā mātou mahere

Ko te Kaunihera o Tāmaki Makaurau tōna kotahi hei momo kāwanatanga ā-rohe i Aotearoa nei, ko tōna whakatinanatanga (he koromatua me tōna Tira Kāwana 20 mema) me ngā 21 poari ā-rohe. Ko tā te Tira Kāwana he aro ki ngā take whānui o Tāmaki Makaurau, ko tā ngā poari ā-rohe ko ngā take o tōna rohe ake, ngā mahi, ngā ratonga me te whai wāhi atu ki ngā rautaki, ngā kaupapa me ngā mahere ā-takiwā.

Ko aua take ā-rohe, ngā mahi me ngā ratonga e pā ana ki te:

- tautoko i ngā mahi toi, tikanga ā-iwi, kaupapa whakahaere, hākinakina, tākaro pūangi ā-rohe
- tuku pūtea me te hono ngātahi ki ngā rōpū ā-rohe ake hei kaiwhakahaere ratonga
- tiaki me te whakarei pokapū tāone, ōna whakaurunga papa rēhia whāre pukapuka me ngā hōro
- tiaki i te taiao me te rāhui taonga tuku iho.

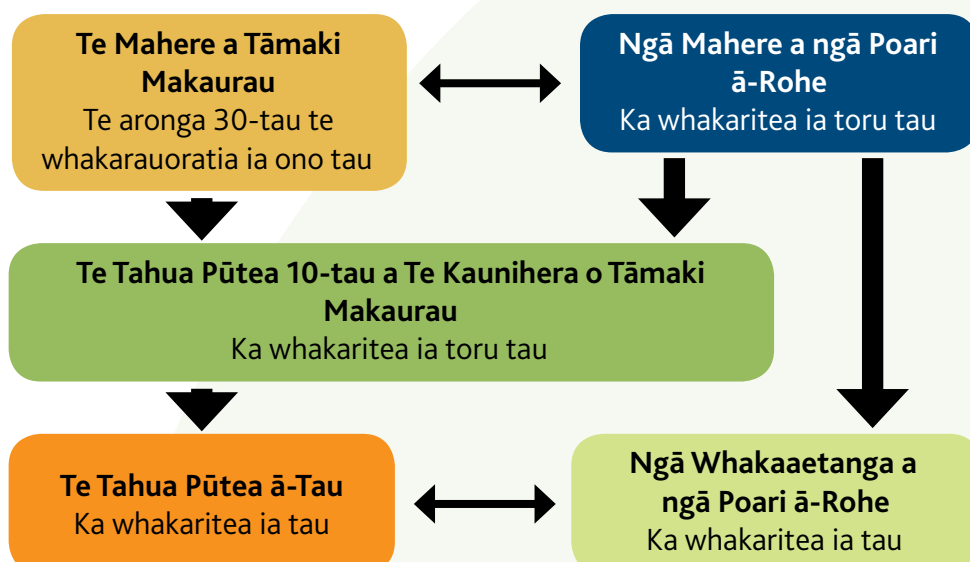
He kawenga hoki kei runga i ngā poari ki te hautū i ngā whakaaro o ngā hapori mō ngā take nui o te rohe.

He kōrero mō ngā mahere a te poari ā-rohe

He puka rautaki ka hangā mō ia toru tau ngā mahere a te poari ā-rohe hei whakarite i te ahunga o aua poari ā-rohe. E tauira ana i ngā kaupapa matua a ngā hapori me ōna hiahia, he arataki i ngā mahi a te poari ā-rohe, tuku pūtea me ana whakatau tikanga whakangao. He whai wāhi hoki rātou ki ngā rautaki me ngā mahere ā-takiwā, tae atu ki te Mahere a Tāmaki Makaurau (aronga 30-tau mō Tāmaki Makaurau) Tahua Pūtea 10-tau a te kaunihera (Mahere Pae-tawhiti) me ngā tahua pūtea ā-tau.

Ngā whakaaetanga a te poari ā-rohe

Ko tētahi o ngā whāinga matua a ngā mahere a te poari ā-rohe he whakatakoto papa mō ngā whakaaetanga a taua poari. I whakaaetia i waenga i te Tira Kāwana me ngā poari ā-rohe, he wāhanga tēnei o ngā hātepe whakarite pūtea a te Kaunihera o Tāmaki Makaurau e whakaritea ai ngā kaupapa tuku pūtea ā-rohe matua, ngā tahua pūtea, taumata tuku ratonga, arotakenga mahi me ngā taumata mahi mō ia tau tuku pūtea. Ka hangā e ia poari ā-rohe he hōtaka mahi ā-tau hei tāpiri atu ki te whakaaetanga a te poari ā-rohe.



Te whakawhanake i tā mātou mahere

Kei roto i tā mātou mahere ko ngā hua e pepehatia ana, ngā aronga e tutuki ai i a mātou, me ētahi o ngā whāinga matua ka kawe e mātou kia eke ai. E hua ai ēnei mea ka riro mā te mahi tahi a te takitini.

I ngā marama o Mei me Hune 2017, i tono kōrero mātou mō te tauira mahere nei. Ko tēnei mahere mutunga i aro ki aua whakahokinga kōrero me ngā mea e mōhio nei mātou mō tō tātou hapori, nā te mahi pātata ki a koutou mō ēnei ono tau me te whakarongo ki ō whakaaro whānui.

195 i āta tuhi mai i ā koutou kōrero mō te tauira mahere, tētahi 50 atu i taki whakaaro i runga i a “Tukuna mai ō Whakaaro” me ētahi atu tikanga hononga mai. Ko te rahinga o te iwi i whakaae, kei runga i te ara tika te poari me tana mahere.

He rahi ngā whakaatu mō ngā āhua whakahaere me ngā ratonga e taea e te poari te hora mō te hunga kaumātua. I aro ēnei ki te āwhina me ngā mahi kawekawe, āhurutanga me ngā whakahaere hauora me te whakapakari tinana, Zumba me ngā akomanga rorohiko.

He whānui atu ngā take i kōkirihiā e ngā whakahokinga kōrero, mai i ngā papa rēhia, hākinakina, tākaro pūangi, toi, tikanga ā-iwi, kaupapa mahi, ratonga hapori, pēhinga ā-whānau me te noho kore whare. He whakapai ake i te āhua o te wai i te Roto o Ōtara, ngā ara wai me ngā awa me te tiaki pai i te wahapū o te Manukau.



Soakai Malamala o Te Kāreti
o Aorere i Papatoetoe i
te kaupapa o Tū Ake, Tū
Whakahira Mai. Whakaahua,
nā Grant Apiata.



Whakaotinga 1: Te hurihanga hōu o Manukau

Kia hua te pokapū tāone nui o Manukau hei pūmanawa mō te rohe: he pekanga whakatau manuhiri, he pokapū pakihi, he wāhi hokohoko, noho, ako, mahi me te tākaro.



Te Papa Rēhia o Hayman i te pūmanawa o Manukau

Ka tūhono atu te poari ki a Panuku Development Auckland (Panuku) ki te toro āhua hōu mō Manukau. Ka mahi tahi mātou me ō tātou hapori kia tōtika ai ngā whakaurunga me ngā ratonga ka tū e tūtakina ai ngā hiahia o te iwi kāinga, ngā manuhiri me ngā pakihi. I te taha o te Rōpū Kaipakihi o te Puku o Manukau, ka mahi nui mātou ki te hautū i te tupu o ngā mahi whakangao me te auaha i te rohe.

Ka mahi nui te poari kia hua he wāhi āhuru, taiao ataahua ki Manukau, he whakapai ake i ngā papa rēhia, ngā ātea tūmatanui mā te aro ki ngā tikanga hoahoa tōtika pērā i ngā mahi tū ā-rama. Ka whakaarotia anō e mātou a Manukau Square, Putney Way me te ara whānui o Davies Avenue me ētahi atu ātea tūmatanui, hei wāhi tokonga kaupapa me te mākete mō te iwi kāinga, mō ngā manuhiri hoki.

Ka whirinaki mātou ki te Koromatua o Tāmaki Makaurau me Panuku ki te kōkiri i te kāwanatanga kia whakatūria a Te Papa ki Manukau.

Me hanga anō te Papa Rēhia o Hayman kia aro ki ngā wāhi whai toa, wāhi whakawhitinga pāhihi me te Kura Hangarau o Manukau (MIT) me te tiaki wāhi tūranga mō Te Papa ki Manukau. Kei te anga mua tonu ngā whakaritenga papa tākaro hōu mō ngā tamariki. Kei te whakaarotia he papa poitūkohu, wharepaku tūmatanui, wharau hoko, māra maumahara, te whakapai ake i te papa retireti, me etahi ātea ā-rēhia mō te whakapakari tinana me te hauora.

Me pai ake te hīkoi haere puta noa i Manukau. Mā te whakapai i ngā papa hīkoi, whakawhitinga ā-rori, ngā rākau i ngā tiriti, utauta me ngā rama tiriti me te whakaiti i te pokea e te motokā. Ka whakahōutia te whakamahi i te Ipu Hākinakina o Manukau.

“ Ka mahi nui te poari kia hua he wāhi āhuru, taiao ataahua ki Manukau, he whakapai ake i ngā papa rēhia, ngā ātea tūmatanui mā te aro ki ngā tikanga hoahoa tōtika pērā i ngā mahi tū ā-rama. ”

Ngā angitūtanga

- He rahi tonu ngā whenua o te Kaunihera o Tāmaki Makaurau e āhei ana mō ētahi mahi hōu, kia meinga rānei hei whakaemi pūtea hei whakapau anō ki te rohe.
- Ka wātea tātou ki te tohu ki ngā mahi hoahoa i te rohe kia pai ake ai te kītea o ngā tini āhua o te hapori me te whakapakari i te wairua kāinga noho.
- He whakapiki i te tatau ā-iwi whai kāinga, mā te rahi ake o ngā whiringa ā-whare, hei hanga wāhi āhuru, oreore.
- He whakarite anō i a Manukau hei pokapū tikanga ā-iwi maha hei wāhi tūtakinga mō aua iwi.

Ngā whakataki

- Ngā whakaaro kore o te iwi mō Manukau.
- He iti noa nei te take e noho tonu ai ngā kaihokohoko me ngā kaimahi i te tāone i muri i ngā haora mahi.
- Te torotoro mātāuru umanga tauhokohoko.



I KĪ MAI KOUTOU KA TAUTOKOHIA E KOUTOU A MANUKAU, INA TŌTIKA NGĀ WHAKARITENGA

- “E meinga ana ko te Tonga o Tāmaki Makaurau te takenga mahi kaihara, pōharatanga, kore mahi me te raru. He tikanga ia o ngā hapori tū wātea motuhake. Ehara i te wāhi tūturu nei, he pokenga hinengaro kē.”
- “Ko Manix” (Manukau) te puku o te Tonga o Tāmaki Makaurau. Ngā rawa katoa. Te wāhi e tūtaki ai te katoa. Anō nei he tangata whairawa koe me ōna toa whakahirahira. Ka whakamau kākahu pai tonu koe mō te haere ki reira.”

Whakaotinga 1: Te hurihanga hōu o Manukau

Whāinga

He whakahōu i te āhua o te tāone nui o Manukau mā te whakatakoto mahere pai me ngā mahi whanake mau roa.

Ngā kaupapa matua

Me whakahōu te aronga matua mō Manukau ka whakatū anō ai, mā te mahi tahi ki a Panuku, Te wānanga o MIT me AUT hei pokapū mātauranga, auaha pakihi.

He whakapai ake i ngā hononga WiFi tūmatanui me ngā ara hīkoi i Manukau Square ki te poka kawē pāhihi, te Papa Rēhia o Hayman me ngā tūnga motokā tūmatanui.

Whakahoū i te mahere mō te Papa Rēhia o Hayman kia watea he wāhi mō Te Papa ki Manukau, he papa tākaro, kaupapa hapori, māra maumahara ki ngā hōia o te Moana-nui-a-Kiwa, hīrere wai, papa tākaro ā-wai, me te pūnaha tātari wai āwha.

He kōkiri ki te Tira Kāwana me Panuku kia tuku tahua mai i te Tahua 10-tau a te kaunihera mā te tuku mai anō rānei i ngā tahua ake a Manukau hei hanga papa tākaro, ara hīkoi, wharepaku me te wharau hokohoko ki te Papa Rēhia o Hayman.

Kia rahi ake ngā kaupapa tūmatanui hei torotoro manuhiri me ētahi mahi hei whāinga mā te iwi kāinga.

He whakahōu me te whakatinana i te Mahere Matua mō te Ipu Hākinakina o Manukau, me Panuku.



Ka tūwhera te teihana pahi o Manukau ā te tau 2018.



Pērā i te Kokonga o Hunter, kei ia pokapū tāone tōna ake āhua motuhake.

Whakaotinga 2: Te whakarauora i ngā pokapū ā-tāone

Mā te whakarauora i ngā pokapū ā-tāone o Ōtara, Papatoetoe Tawhito, me te Kokonga o Hunter e pakari anō ai tō rātou tū mai hei matū mō ō tātou hapori.

Ko te pūmanawa tonu o ngā hapori ngā pokapū tāone nei; koinei ngā wāhi huinga ki te kōrerorero, hokohoko, haere ki te tākuta, torotoro ai i ngā ratonga tautoko hapori, e rawe ai ki ngā mahi ngahau. Tō mātou hiahia kia mā, kia āhuru, kia ātaahua me te māmā te tae atu ki ō tātou pokapū tāone.

Ka mahi tonu mātou ki te whakapai ake i ngā ara hīkoi, papa rēhia, toi tūmatanui, whare pukapuka, pokapū, whare nui ā-hapori me te tiaki i ngā pūnaha mata whakaata marumaru.

Ka tautoko tonu mātou i ngā wātene Māori me te Moana-nui-a-Kiwa, ngā hōtaka takinga kaikōrero me ētahi atu tūhononga tautoko i te āhurutanga o te iwi tūmatanui i runga i tā koutou kī

mai he mea rawe ēnei. I ia pokapū, ka mahi tahi tonu mātou ki te tautoko i ngā rōpū kaipakihi ki te whakapai ake i te āhuru me te whakawhanake ōhanga.

Heoi rā, ko tō mātou hiahia he whakarangatira i te āhua ake o ia pokapū ka kōkiri ai i tēnei ki ngā kaiwhakawhanake tūmataiti, tūmatanui.

“ I ia pokapū ka mahi tahi tonu mātou ki te tautoko i ngā rōpū kaipakihi ki te whakapai ake i te āhuru me te whakawhanake ōhanga. ”

Te pokapū tāone o Ōtara

Ka tautoko tonu mātou i ngā mahi toi me ngā kaupapa ā-iwi he mea nui tonu ki a koutou, i mōhiohia ai a Ōtara puta noa i Tāmaki Makaurau mō tōna whakanui i ngā mahi puoro, ā-toi hoki. Ka tautokohia te Fresh Gallery, ngā toi tūmatanui (me MIT), te Ōtara Music and Arts Centre (OMAC). Kei te taumata ō mātou whakaaro mō Ōtara he whakaoti i te whakahōutanga o Te Pokapū ā-Hapori o Te Puke o Tara.

Te pokapū tāone o Papatoetoe Tawhito

Ka tūhono mātou ki a Panuku ki te whakarauora i te pokapū tāone kia tupu ai hei wāhi aronuitia hei kāinga, hokohoko, tūtakitaki me te ngahau, me tōna hora i ngā ratonga me ngā whakaurunga e hiahia ana te hapori.

Te pokapū tāone o te Kokonga o Hunter

Ka aki tonu mātou kia riro mai, kia whakawhanaketia anō te whenua i te kokonga o Sutton Crescent me Great South Road. Mā tēnei ka kitea mai ngā whakaurunga hākinakina i Great South Road, e hangaia ai he papa tūwātea e pātata ana ki ngā toa hokohoko.

Ka tautoko ā-tahua e mātou ngā kaupapa ā-iwi takitini e whakanui ana i te rahi o ngā tikanga ā-iwi kē.

Ngā angitūtanga

- Te āhei o te whakatupu tahua hei hanga whare ki roto, e pātata ana rānei ki ngā pokapū tāone.
- He whakapiki i ngā kaupapa e hautū ana i te wairua ā-hapori e tupu ai he māramatanga me te aronui ki ngā tikanga ā-iwi kē.

Ngā whakataki

- Ngā pōhēhē e hāngai ana ki ngā pokapū tāone ki ngā raru papori pērā i te mahi kairau ā-tiriti, mahi kaihara, pīnono me te kai taru whakawairangi.
- Torotoro tahua hōu.



HEI TĀ KOUTOU KI A MĀTOU

- “Ko tōku hiahia hei wāhi āhuru, mā hoki a Ōtara ki Papatoetoe mō ā tātou tamariki, kia rahi atu hoki ngā wharepaku mā.”
- “He mea nui ki ahau kia whai wāhi nohonoho te iwi.”

Whakaotinga 2: Te whakarauora i ngā pokapū ā-tāone

Whāinga

Ki te hautū mahi whakawhanake ōhanga me te noho āhuru a te iwi tūmatanui i ngā pokapū tāone me te whakapakari ake i tōna noho hei pūmanawa ā-hapori.

Ngā kaupapa matua

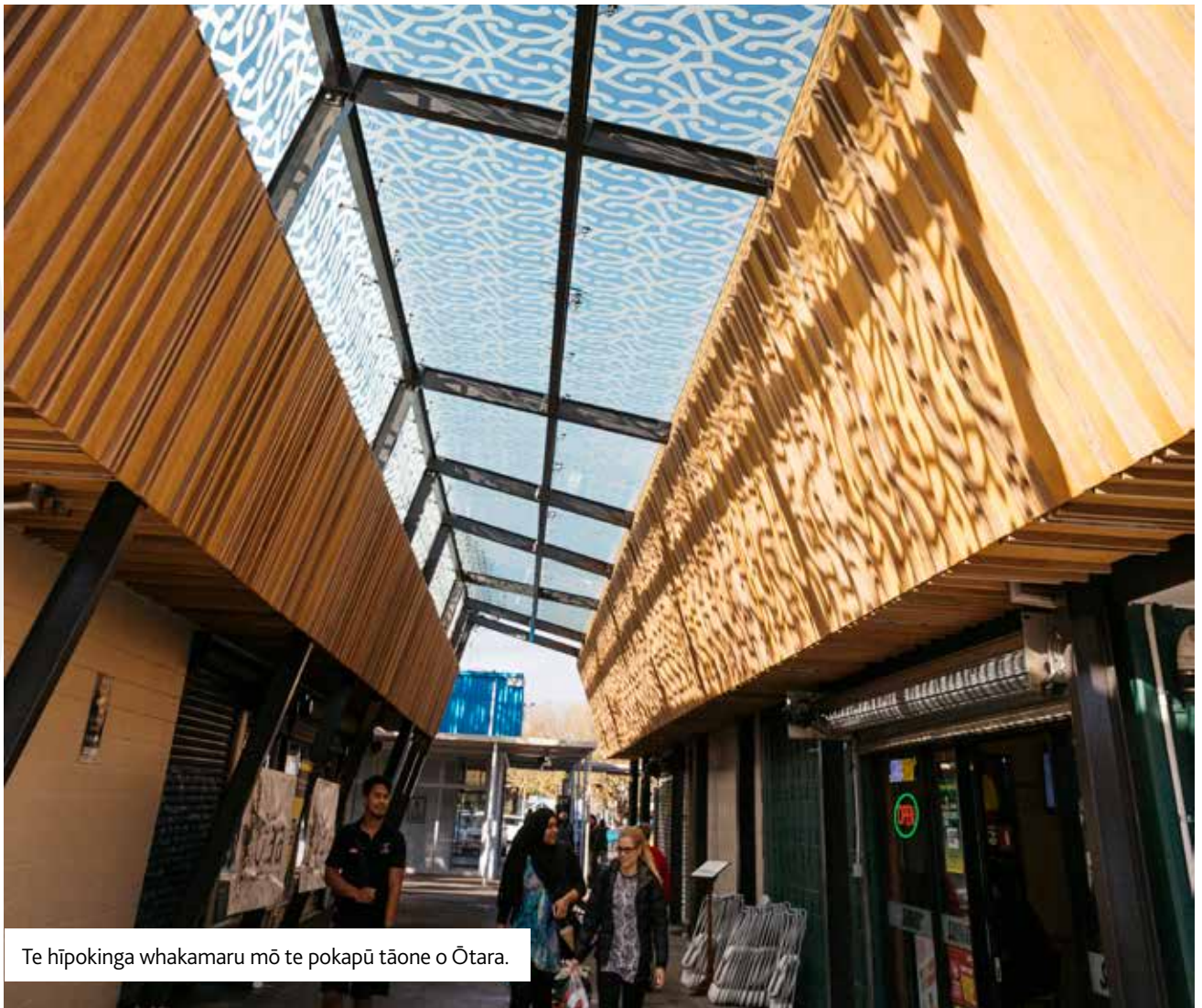
He whakapiki i te whanaketanga ōhanga mā te tūhono ki ngā rōpū kaipaikihi ki te tautoko i ngā kaupapa ā-hapori me te whakapai ake i te āhurutanga o te iwi tūmatanui.

Aromātai i ngā angitūtanga o te whakapau tahua ki te whakapai i ngā whakaurunga i roto i ngā pokapū tāone pērā i ngā wharepaku, ara hikoī, taunga motokā me te toi tūmatanui.

He kōkiri ki te Tira Kāwana kia uru ki te Tahua 10-tau a te kaunihera:

- he whakahōu ana i ngā whakaritenga mō te whenua i te Kokonga o Sutton he ai ki te takinga ā-mahere
- he hoahoa anō i ngā urunga ki te whare pukapuka o Ōtara me te Te Pokapū Puoro, ā-Toi o Ōtara me te ātea i waenga i ngā tari kaunihera me te Mōro o Ōtara.

He tūhono ki a Panuku ki te whakawhanake anō i a Papatoetoe Tawhito.



Te hīpokinga whakamaru mō te pokapū tāone o Ōtara.



Ngā papa tākaro o te rohe i te Papa Rēhia o Ōtamariki.

Whakaotinga 3: Ngā papa rēhia me ngā whakaurunga e ea ai ngā hiahia o te iwi

Kia wātea ki ō tātou hapori ngā papa rēhia me ngā whakaurunga e tupu ai he tuakiri whanaungatanga, e piki ai te uru ki ngā kaupapa i te hapori, e hautūtia ai he orange whai hua.

Ko te whai wāhi ki ngā mahi hākinakina me te tākarō pūangi he mea nui hei whakapakari i te hapori me te hiki i te hauora tūmatanui o te mahi ahuhenua. Ka mahi mātou ki te whakapiki i te whai pānga atu mā te hora urunga me te tautoko i ngā karapu hākinakina ka whakarite kēmu, kaupapa mahi hoki. Ka tautoko tonu mātou i te Kolmar Trust me ētahi atu karapu pērā e mahi tahi ana.

I te hōtoke tonu e pokea ana ō mātou papa whutupaoro, rīki, poiwhana, pā whutupaoro, whakapā, kirikiti, kilikiti, poiuka, me te whutupaoro Amerikana ka haratau ana. E tono ana te rahi kia tini, kia pai ake ngā whakaurunga hākinakina. Ki te pātai, “He aha tāu mahi pai i Ōtara-Papatoetoe?” he tākarō papa hākinakina te tino whakautu, me te tohe kia pai ake ngā whakaurunga.

I te hōtoke tonu e pokea ana ō mātou papa whutupaoro, rīki, poiwhana, pā whutupaoro, whakapā, kirikiti, kilikiti, poiuka, me te whutupaoro Amerikana ka haratau ana. E tono ana te rahi kia tini, kia pai ake ngā whakaurunga hākinakina. Ki te pātai, “He aha tāu mahi pai i Ōtara-Papatoetoe?” he tākarō papa hākinakina te tino whakautu, me te tohe kia pai ake ngā whakaurunga.

Ko te pai ake o te whakamahi i ngā mea kei a tātou tonu he tokonga tuatahi, tae atu ki te hanga hononga me ngā kura ki te whakamahi whakaurunga. Ka tirohia e mātou te whakamahi urunga hākinakina tūmataiti a te hapori, te emi tahua tūmataiti hei utu whakaurunga tūmatanui, pērā i ngā papa poitūkohu hōu o te rohe i te Papa Rēhia o Ōtamariki, nā Spark i hanga ki runga whenua kaunihara.

Ina taea ā-tahua, ka oti i a mātou te pokapū hākinakina takitini ki te Papa Rēhia o Ngāti Ōtara, ngā wharepaku me ngā whare tīni kākahu i te Papa Rāhui o Kingswood i roto i ngā tau e toru nei. Ka kimi pūtea mātou mō ngā kaupapa iti noa i tohua mai e koutou, pērā i ngā wharepaku tūmatanui.

I tēnei wā ko mātou te kaiutu mō te Papa Rēhi Motokā hōu o Colin Dale e whakamahia nei e ngā hapori o waho atu i a Ōtara-Papatoetoe. Ka tohe mātou mā te Tira Kāwana e whakahaere anō he papa rēhia ā-takiwā, kia eke ai te utu e tika ana mō ngā painga e hua ana ki te takiwā whānui.

Ko tō mātou hiahia hei wāhi ataahua ngā papa rēhia o te rohe e tūtaki ai

“ Ko tō mātou hiahia, hei wāhi ātaahua ngā papa rēhia o te rohe e tūtaki ai te iwi, ki te whakakori tinana me te whakahoahoa noa. He mea nui tonu te whai wāhi ātea ka kūiti ana ngā wāhi wātea i ngā kāinga. ”

te iwi, ki te whakakori tinana me te whakahoahoa noa. He mea nui tonu te whai wāhi ātea ka kūiti ana ngā wāhi wātea i ngā kāinga. E tupu ana hoki te hiahia wāhi tākaro noa. Ā tōna wā ka huakina ake e mātou te Papa Rēhia o Hampton ki ngā mahi a te iwi tūmatanui.

Me āta tiaki rawa e tātou ō tātou wāhi tipu matomato tū wātea. I mua, ka tukua ngā whenua rāhui ki ngā pokapū tamariki kōhunga me ētahi atu whakahaere kāhore i hāngai ki te hākinakina me te tākaro pūangi. He utu tonu tō tēnei ki te hapori. Ka mahi tonu mātou me te hunga taki i aua mahi ki te kimi whenua atu mō ā rātou whakahaere.

He kaha tonu te whakamahia o ngā whare nui ā-hapori, ngā ātea rīhi me ō tātou whare pokapū, e āwangawanga ana te poari tērā te rahi kūrakuraku noa, kua tawhito me te aro kia whakahōutia. He manako nō mātou kia oti te whakahōu o te Whare Pokapū o Te Puke o Tara ā te tau 2018 nei. E whakapono ana mātou me whakahōu anō hoki ko te Whare Nui ā-Tāone o Papatoetoe i whakatūria i te tau 1918 me te Whare Pokapū o Tāmaki ki te Rāwhiti.

Kei te poto te tahua mō te whakapai ake i ngā ātea hapori. Ka whāia tonu e mātou te āhei ki te whakawhanake anō i ngā rawa a te kaunihera kāhore i te tino whai hua. Ko tēnei āhuatanga, he “kaupapa kimi painga”, ka toro ki te hoko whenua tohi, whare, me te hau ātea noa, ka whakamahi ai ngā moni te hua mai hei whakawhanake anō i ngā rawa hapori kei te rohe o te poari. I raro i tēnei kaupapa, kāhore he tonu pūtea tapiri i te Tira Kāwana.

He kaha te whakamahia o ngā whare pukapuka e whā me tō rātou mahi tahi me ētahi atu whakaurunga kaunihera ki te hora hōtaka me ōna ratonga. E toru ngā pokapū ā-rēhia me ngā hōpua kaukau kei te whakahaeretia e mātou, hei tā koutou e tūtakina ana ō koutou hiahia, ahakoa te aro me whakapai ake. E mōhio ana mātou he mea nui te kaukau ki te tamariki, koia mātou ka aro tonu kia wātea ngā hōpua kaukau hapori ki te pakeke me ngā tamariki mō te kore utu.

Ngā angitūtanga

- Kia kaha atu te whakawhanake wāhi tū wātea.
- Whakamahia ngā whakaurunga ake o te rohe mā te hono ki ngā kura (he 37 kura me ōna papa tākaro 48).
- He whakawhanake anō i ngā rawa a te hapori kāhore i te eke ngā whakahaere i raro i te “kaupapa kimi painga” a te kaunihera, ki ngā hua o te hoko i ētahi o ana rawa.
- He whakawātea wāhi i roto i ngā tari a te kaunihera mā te tuari wāhi rīhi ā-hapori.

Nga whakataki

- Te utu mō ngā whakahaere me ngā whakahōutanga i ngā papa rēhia me ōna whakaurunga.
- Te pēhia o ngā papa rēhia me ōna whakaurunga e te piki o te tatauranga ā-iwi me ōna tini rerekētanga.
- He āwhina i ngā rōpū hapori ki te kimi wāhi noho tōtika.



HEI TĀ KOUTOU KI A MĀTOU

- “I roto i te 10 tau ko taku hiahia kia rahi ake ngā wāhi hākinakina – kirikiti, tenehi, whutupaoro, kaukau.”
- “Me whakahōu ake ngā hōpua kaukau o Papatoetoe, ina whakaritea ki ō Ōtāhuhu, ka nui te tawhito.”

Whakaotinga 3: Ngā papa rēhia me ngā whakaurunga e ea ai ngā hiahia o te iwi

Whāinga	Ngā kaupapa matua
He tohe kia āhuru, kia wātea atu, kia rite mō te kaupapa ngā whakaurunga hapori.	He kōkiri tahua pūtea i te Tira Kāwana mai i tana Tahua 10-tau mō te whakahōu i te: <ul style="list-style-type: none">• Whare Nui ā-Tāone o Papatoetoe• Te Whare Pokapū o te Hapori o Tāmaki ki te Rāwhiti• Ngā Taiwhanga o Papatoetoe.
Hei papa rēhia ā-takiwa te Papa Rēhi Motokā o Colin Dale.	He kōkiri ki te Tira Kāwana kia noho te hei papa rēhia ā-takiwā te Papa Rēhi Motokā o Colin Dale.
Kia tūtakina e ngā papa rēhia me ōna whakaurunga ngā hiahia hākinakina, tākaro pūangi o te hapori.	He kōkiri tahua pūtea i te Tira Kāwana mai i tana tahua 10-tau mō te: <ul style="list-style-type: none">• pokapū hākinakina takitini o Ngāti Ōtara• he whare tīni kākahu / wharepaku i te Papa Rāhui o Kingswood• he papa kiri tāwhaiwhai hōu mō te papa tākaro i te Papa Rāhui Tākaro Pūangi o Papatoetoe• he whare tīni kākahu / wharepaku mō te Papa Hākinakina o Te Puke o Tara• he whāriki onepū mō te Papa Tākaro o Rongomai• he whakahōu anō i te Hōpua Rau Tau o Papatoetoe.
	He taki i te aromātai me te whakatinana o te mahere matua mō ngā Papa Rāhui o Puhinui me Sandbrook.
	Kia oti te whakahōu i te piriti hīkoi o te Pūkaki o Ōtara.



He taumata whakaaro ko te anga mua o te whakaurunga hākinakina takitini i te Papa Rēhia o Ngāti Ōtara.

Whakaotinga 4: He taiao taketake hauora

He pai ki a tātou te taiao taketake hauora, kāhore i te pokea e te kīrehe orotā, te otaota me te whakaparahanga.

E aro ana mātou kia mōhio te iwi mō te hauora o tō tātou taiao taketake me te tautoko i ngā mahi hei tiaki i a ia. Mō ngā tau e toru e tū mai nei ka tuku pūtea me te hautū hōtaka taiao mā ngā kura, pērā i a “Adopt a Spot” i ētahi o ō tātou wāhi motuhake.

Ko tētahi o aua wāhi ko te Roto o Ōtara. Kei te nanatihia te roto e te mānawa e tupu ana i runga one tāhawahawa me te aha he mea whakamōrearea hauora. I hanga e mātou te pae tawhiti mō te Roto o Ōtara me ōna ara wai kia mōhio ai te iwi ki te kaikinohia o te roto e oho ai he whakaaro hei whakaora ake. Ka mahi tonu mātou me ngā rōpū o te hapori, mai i te Ōtara Network Action Committee me te Ōtara Lake and Waterways Trust. Ka whai pūtea mātou i te Tira Kāwana, te kāwanatanga o Aotearoa, Contact Energy, ngā kaipakihi ake o te rohe, me te hunga whakaaro nui ki te orange mai o te roto.

Kua kī mai koutou ko tō aronui ki mā ngā wai o tātou awa me te wahapū. Ka kōkirihiā e mātou ētahi tikanga e heke ai te tuku para one me ngā āhua whakaparahanga i ō tātou awa e anga atu ana ki te wahapū mā roto mai i te Rōpū o te Wahapū o Manukau, hei whakapiki ake i te hauora o te Wahapū o Manukau.

E mahi tahi ana hoki mātou me ngā rōpū hapori, ki a Panuku Development Auckland me te Poari ā-Rohe ake o Manurewa ki te whakapaipai me te huaki ake i te Pūkaki o Puhinui. He rahi tonu te hua ina mahi tahi ana mātou. I ngā tau tata nei, i taea e te 2,000 tūao te kohikohi neke atu i te ono tana otaota mai i te Pūkaki o Puhinui me te whakatō kia 25,000 rākau Māori ki ōna parenga. I whakanui tēnei mahi a te hapori i Ngā Tohu o te Te Awa o Aotearoa kua piki rawa te ora o te tau 2016. Ka tautoko tonuhia e mātou te anga mua o ēnei mahi.

Ka whakahautia e te poari te iwi kāinga ki whai pānga ki ēnei hōtaka taupuhi kaiao hei aukati i te tipu orotā. Ka mahi tahi mātou me te Tira Kāwana ki te kimi tikanga i tua atu i te iro patu tarutaru hei puri i te tupu a te tipu orotā ki ngā whenua o te kaunihera. Ka tautokohia hoki e mātou ngā takinga mahi tiaki ake i te taiao ā-rohe, pērā i te whakatipu ngāhere anō ki te rohe tāone.

Ka āwhinatia e mātou ngā mahi ā-rohe ki te aukati i te rahi o te para e tukua ana ki ngā papa purunga whenua, mā te tūhono ki te Tira Kāwana me ētahi atu poari ki te hanga kōtuinga whakaora rawa mō te tonga.





Te rangi whakapai i
Ngā Tiriti Tau o Ōtara.

Ngā angitūtanga

- He whakapiki i ngā pūkenga ā-hapori ki te muru tipu me te kīrehe orotā.
- He mahi me ngā rōpū hapori me ngā kura ki te aukati i te tuku para ki ngā papa purunga whenua mā te hautū tikanga hangarua, whakamahī anō me te aukati para.

Ngā whakataki

- He panoni i ngā whakaaro o te tangata ki te hua o ana mahi ki te taiao.
- Kei tua atu i ngā tahua a te poari te whakaora ake i te papa o te Roto o Ōtara; he mea tino hira te hono ki ētahi atu tira hei toro pūtea mō tēnei mahi.



HEI TĀ KOUTOU KI A MĀTOU

- “He raru nui tonu tōku me te hunga e whakataka noa nei i ā rātou otaota, me ā tātou moni reiti e moumoutia nei ki te hunga whakataka otaota noa nei.”

Whakaotinga 4: He taiao taketake hauora


Whāinga	Whāinga
He whakapai ake i te kounga o te wai i ngā awa pūkaki o te rohe, me ngā wahapū o Manukau me Tāmaki.	He hautū i te pae tawhiti mō te whakaoranga o te Roto o Ōtara me ōna ara wai.
	He whakatō haere i ngā parenga o te Roto o Ōtara me ōna manga, te Pūkaki o Puhinui me te Papa Rēhia o Hayman.
	Kōkiri i te Tira Kāwana kia rangahautia ka whakarite ai i ētahi tikanga e iti iho ai te te waipara i ngā pūkaki e rere ana ki roto i ngā wahapū.
	He mahi tahi me te āwhina i te iwi whai pānga ki te rangahau me te whakapai anō i ngā ākau o te Manukau me Tāmaki.
He whakaiti i te para e tukua ana ki ngā papa purunga whenua.	He kōkiri tahua i te Tira Kāwana mai tana Tahua Pūtea 10-tau hei hanga kōtuinga whakaoranga rawa mō te tonga hei papare tukunga para ki ngā papa purunga whenua (mā te hono atu ki ētahi atu poari ā-rohe).
	He tuku pūtea ki ngā rōpū hapori e arataki kaupapa hangarua, kohi otaota, toro hōtaka mātauranga taiao.
	He whakahau kia eke te tohe ā-takiwā ki te hapori kia eke te kaupapa o Tāmaki Makaurau Para Kore 2040.
He aukati i ngā tipu me ngā kīrehe orotā mā roto i ngā mahi haumarua hapori.	He mahi tahi me te Tira Kāwana ki te whakamātau i te hapori ki ngā tipu me ngā kīrehe orotā.



He whakatō haere i ngā parenga o te Roto o Ōtara me ōna manga, te Pūkaki o Puhinui me te Papa Rēhia o Hayman.



E whakanui ana mātou i ngā taonga tuku iho me te maha o tikanga ā-iwi maha kei ō tātou hapori.



Whakaotinga 5: Hapori whaimana, whakarauhī me te tōnui tonu

He manawapā te iwi o Ōtara ki Papatoetoe mō tō rātou rohe, kei te au te me te āhuru te noho, he tautoko tētahi i tētahi me te āhei atu ki ngā tikanga kawē pāhihi.

Tātou katoa e hiahia ana kia tūhono ō tātou hapori, hei wāhi aronuitia mō te noho me te pekanga noa mai.

Hei tā koutou, me āhuru ake i a mātou ngā tiriti me ngā ātea tūmatanui, koia mātou te mahi tonu i ā mātou tikanga āhuru ki ngā pirihihana me ngā rōpū hapori.

Ka tautoko tonu mātou i ngā whakahaere me ngā kaupapa e tohe ana i te iwi kia uru ki roto i ngā mahi me ō rātou hapori.

Ko ngā kaupapa matua mō ngā tau e toru e tū mai nei he mahi tahi me ngā hapori ki te whakapakari i a rātou ki te whakatinana i ō rātou ake wawata, waihanga me te whakatū kaupapa whakahaere, mahi whakahau. He tauira ko ā tātou māra ako me te whakarite mātanga hei taki i ngā rōpū e mahi ana ki te aukati i ngā raru waipiro me te kaikino mea whakapōauau. Ka ū tonu tā mātou hautū kia noho auahi kore te taiao me te aukati i ngā raru e hua ana i te momi tupeka.

“ Ko ngā kaupapa matua mō ngā tau e toru e tū mai nei he mahi tahi me ngā hapori ki te whakapakari i a rātou ki te whakatinana i ō rātou ake wawata, waihanga me te whakatū kaupapa whakahaere, mahi whakahau. ”

E hiahia ana hoki mātou ki te tautoko i te oranga o te ōhanga o ō tātou hapori. Ngā whāinga papori, hei tauira, ngā pakihī e toko ana kia hua ko te painga papori, e āhei ai te hapori ki te whakatinana i ōna ake wawata he ai ki tōna hiahia. Mā te tūhono ki The Southern Initiative ka whakahau mātou i te whakawhanaketanga o ngā kaupakihi papori, kia whiwhi oranga ai te hunga e mahi ana mō te painga o te hapori.

I raro i a Whiria Te Muka Tangata / Te Pou Tarāwaho Takinga ā-Māori, kua here te kaunihera i a ia ki te whakapakari i ngā hapori Māori me tōna oranga. Ka ākina tēnei e te poari mā roto atu i ana hōtaka mahi tahi me te hāpai i te mana o te hunga kaihautū, tōtika tonu mehemea ake ko ngā hōtaka kaiako pono i te rangatahi. Ka tohe kaupapa whare tonu hoki mātou mō te hunga kaumātua o Ōtara ki Papatoetoe.

E tautoko ana mātou i ngā hōtaka me ngā whakahaere e whakakotahi ana i ngā tini āhua kei ō tātou hapori, neke atu nei i te 100 ōna momo iwi kē. I te tau 2017 ka whakatūria e mātou he Rōpū Wānanga ā-rohe Momo Iwi Kē, hei whakapiki ake i te tūhono mai a ngā hapori o iwi kē me te poari, ka tohe hoki mātou ki te whakatupu i taua kaupapa.

E mōhio ana mātou he mea nui tonu ngā whakahaere me ngā hōtaka ā-iwi ki te māramatanga ki aua tikanga. Ka tuku pūtea, rauemi hoki tonu mātou ki ngā mahi toi, ngā whakahaere me ngā ahurei ā-hapori. Kua tīmata tā mātou whakarite mahere mō tētahi whakahaere ā-tau momo iwi kē te tū ā tōna wā hei mana whakahī ki tō tātou rohe poari.

Ka haere tonu tō mātou tautoko i ngā whakahaere mai rā anō pērā i te takinga mō Hanakoko, ngā whakaatu putiputi, Diwali, te Tau Hōu Hainamana, Polyfest, Matariki me Anzac.

Mō ngā wāhi pērā i te Pokapū ā-Puoro, ā-Toi o Ōtara me te Fresh Gallery, e hohou ana i te wairua whai pānga me te torotoro tonu i te hunga mahi toi me ngā kaiwhakaari ki te whakatairanga i ō rātou pūkenga. E kimi ana hoki te Whare Pukapuka o Ōtara i ētahi tikanga hōu hei whakaoho e uru mai ai he tāngata hōu.

Ngā angitūtanga

- He āwhina i te iwi me ngā rōpū ki te āwhina i a rātou ake. Pērā i te ako mahi māra, me te āta tohutohu i ngā rōpū e mahi ana ki te aukati i ngā raru o te kai waipiro.
- He hora nui i ngā hōtaka e āhei ai ngā manene oro tae mai ki aua hōtaka whakangungu, taki mātauranga.

Ngā whakataki

- Ahakoa kua heke te raraunga mau hara, ko te whakaaro tonu ehara a Papatoetoe i te wāhi āhuru mōu.
- Ko ngā ārai ā-reo, tikanga ā-iwi, kaupapa kawekawe rānei e whakatepe i te uru noa atu o te rahi o ngā hapori.



HEI TĀ KOUTOU KI A MĀTOU

- “He maha rawa ngā wāhi hoko waipiro me te petipeti.”
- “I roto i te 10 tau ko taku hiahia kia mā, kia āhuru ake aku hapori.”

Whakaotinga 5: Hapori whaimana, whakarauhī me te tōnu tonu

Whāinga	Ngā kaupapa matua
Whakanui i ngā taonga tuku iho me ngā tikanga ā-iwi whānui kei ō tātou hapori.	Whakatū he Rōpū Wānanga ā-Rohe Momo Iwi Kē, hei whakapiki ake i te tūhono mai a ngā hapori ā-iwi kē ki te poari.
	Whakatau manene kua oro tae mai me te āwhina i tō rātou uru ā-kāinga hōu ki ētahi kaupapa whakahaere ake.
	Whakatū ahurei ā-iwi noa ia tau ki te Papa Rēhia o Hayman.
	Tuku tahua ki ngā whakaatu ā-toi me te tautoko i ngā mahi pūkenga toi e taki ana i ngā rerekētanga o te rohe.
	Tuku pūtea tautoko whakahaere, tuku tohu arahanga whakatūtū me ngā mahi whakanui tikanga ā-iwi.
Whakapiki mana hapori pupuri kaha.	Hautū ingoa rori hōu e whakaatu ana i ngā taonga me ngā tikanga ā-iwi tuku iho o te rohe ake.
	Tuku pūtea hei ako i te iwi me ngā rōpū ki ngā pukenga e tōtika ai te whakahaere i ō rātou rōpū.
	Tuku pūtea ki ngā hōtaka e ako tāngata ana ki te whakatō kai mā roto atu i ngā māra ākongā.
Hautū hauora me te oranga noa i te hapori.	He tohutohu i ngā rōpū me pēhea te tono pūtea me te tuku kōrero mō ngā take papori. Pērā i te noho kāinga kore, riri ā-whānau, tūkinō ā-tarutaru me te mahi petipeti.
	Tuku pūtea ki ngā whakahaere Auahi Kore, Para Kore hoki.
	Tuku āwhina ki ngā rōpū hapori e hautū hōtaka me ngā whakahaere hauora, noho āhuru, oranga pai.
	Tautoko tonu i te noho kore utu o te uru a te katoa ki ngā hōpua kaukau tūmatanui mā te tuku pūtea ā-rohe ake.
Hautū i te oranga ōhanga i te hapori.	Kōkiri kia whakamahia te kaupapa waipiro ā-rohe a te kaunihera.
	He whakahau tūturu i ngā kaipakihi ki te tuku mahi ki te iwi ā-rohe, Māori me Pasifika ake mā te whakamahi i ngā tukanga taki kirimana a te kaunihera.
	Tūhono ki a The Southern Initiative mō ngā tohutohu me ngā whakawhiwhinga pūtea hei tīmata pakihi hōu.
	Tuku pūtea tautoko ki ngā pakihi manene.



Ko tā te Tira o Ōtara- Papatoetoe he tohutohu i te poari i ngā take taiohi me te whai wāhi ki ngā kaupapa ā-rohe ake.

Whakaotinga 6: Whakamānawa ana i te taiohi me te hunga kaumātua

He uara nui te hunga taiohi me te kaumātua ka taea te torotoro i ngā mahi me ngā whakahaere a te hapori.

E hiahia ana mātou kia angitū te hunga taiohi me te kaumātua e eke ai ō rātou manako katoa. He nui atu te rahi o te taiohi i konei i tērā o Tāmaki Makaurau whānui me te tere atu o te tupu o te reanga kua eke ki tua o te 65 tau.

E whakapono ana mātou he mātāpuna pūkenga, whakaaro, ngāo hōu hoki te hunga taiohi o Tāmaki Makaurau. E mōhio ana mātou ko tō rātou uru ki te ao me ngā mahi a ngā hapori he painga mō rātou me te whakatupu o te tāone nui o āpōpō ake nei; he whakahira ki a tātou katoa.

He take nui te whai mahi tūturu mō ērā kei raro i te 25 tau, me te warea o te rahi o koutou ki tērā. Ko te utu ā-papori o te kore mahi he raru nui hoki ki te poari. Ko tā mātou kaupapa matua hei tautoko i tēnei, ko Youth Connections. Ko ētahi o ā rātou hōtaka e pā ana ki te pū hononga kaituku mahi, Jobfest, te arataki taiohi, whakamātautau kaiārahi me te āwhina taiohi kia whiwhi raihana.

Ko tā Youth Connections hoki, he hautū i a YouthFULL, he papa ipurangi e āwhina ana i ngā taiohi ki te whakatika i a rātou mō te mahi, me te whakamau tikanga e uru ai, tērā hoki a Jobfest te whakahono taiohi kua rite atu mō te mahi me ngā kaituku mahi kua rite mai mō te taiohi. I tēnei wā kei te mahi tahi mātou me tō matou rōpū kaitohu, Te Tira o Ōtara- Papatoetoe (TOPS) hei whakapiki ake i ō mātou hononga me te hunga taiohi.

Ko ētahi atu kaupapa kei te tautokohia e mātou ko te Hōtaka Arataki o Tuia Rangatahi, ngā Tohu Kaiārahi ā-Tāone mō ngā tauira kura tuarua, me te Junior Neighbourhood Support. E tirohia ana e te poari te āhei waihanga pū hononga taiohi.

I konei kua rahi atu te tauranga o te hunga kua eke ki tua o te 65 tau. He ai ki a koutou ko ētahi o ngā tino take kaumātua, he whai whare, hauora, āhurutanga, noho mokemoke noa, me te āhei ki ngā tikanga kawē pāhihi tūmatanui. Ka whakatūria e mātou he rōpū kaitohutohu ā-kaumātua hei taki i ēnei take ki te poari. Ka tuku pūtea tonu mātou ki ngā rōpū e āwhina kaumātua ana. Ka āromātai, ka kōkiritia e mātou ngā hiahia o te hunga kaumātua e noho ana i ngā whare o te kaunihera. Tae atu ki te kōkiri i te kāwanatanga mō ētahi atu whare, ki ngā pirihimana me ētahi atu tari hei whakapiki ake i te noho āhuru me te pai o te ora o te hunga kaumātua.

E kaikaha ana mātou kia tūtaki te reanga taiohi me te reanga kaumātua ki te hora i ō rāua wheako me ō rāua pūkenga. Hei tauira, ko te Ōtara Skills Shed e tūtaki ai te hunga kaumātua ki te waihanga ā-toi, kaupapa pūangi e oha ai rātou i ō rātou pūkenga me te hunga taiohi. E whakaaro ana hoki mātou mō ētahi mahi hangarua me te whakarauora rawa me ētahi pakihi kāhore-mō-te-mahi-moni-hua te whakahaeretia hoki ki te wharau pūkenga. Ka tohe tonu te poari ki te whakatū wharau pūkenga ki Papatoetoe.

Mai i ngā rangahau a The Southern Initiative kua kitea, tērā ngā mātua tamariki oro whānau mai, whai kōhungahunga hoki e aro mahi me te āhei ki te tūtakitaki ki a rātou ake ki te whakarite haerenga papori noa. Ka taea e mātou te āwhina atu mā te mahi tahi me te Tira Kāwana ki te kāpui mai i ngā hōtaka kei ngā wāhi whakaurunga a te kaunihera.

Ngā angitūtanga

- Mā te hangarau, pērā i ngā teihana whakangao waka-kōneke me te hono ā-ipurangi (WiFi) e taea ai te āwhina tāngata ahakoa te taipakeke kia mau tōna rangatiratanga.

Ngā whakataki

- He kimi kaihautū hei whakarite i ngā aronga ako o ngā taiohi ā-rohe me te hunga kaumātua ki ngā hōtaka.
- He tohe taiohi me te kaumātua uru ki ngā kōwhiringa me ngā whakatau-kaupapa a te poari ā-rohe.



HEI TĀ KOUTOU KI A MĀTOU

- “Mehemea he \$50 mano tāku ka whakatūria e au he pokapū huinga mō te taiohi hei tautoko/taiao āhuru me te wāhi ngahau, koa/tūtakitaki/toha, whakamana.”
- “Nā te pakeke ake, he mea nui te noho āhuru, ara hīkoi āhuru me te whai kaiwhakawhirinaki i ngā pokapū tāone e au ai te noho a tōna iwi.”
- “Tiakina ō tātou mātauranga mā te hono kaumātua me te taiohi. He whanaungatanga kaumātua/mokopuna.”

Whakaotinga 6: Whakamānawa ana i te taiohi me te hunga kaumātua

Whāinga	Key initiatives
Hautū kaupapa arataki taiohi me te whai pānga ki te ao mahi, mātauranga, whakangungu me te pakihī.	<p>Tuku pūtea tonu ki a Youth Connections, me te whakahau iwi kaipakihī ki te mahi tahi me Youth Connections rāua ko The Southern Initiative ki te whakatū mahi.</p> <p>Tautoko i a TOPS ki te kōkiri i ngā take taiohi ki te poari.</p> <p>Ka haere tonu te tautoko i ngā hōtaka whakaaweawe, pērā i a Ka Eke Poutama me Tuia Rangatahi.</p> <p>He whakatairanga i te mahi hiranga mā te tuku pūtea ki ngā mahi pērā i ngā tohu kaiarataki taiohi.</p>
He tohe kia āhei ngā kaumātua ki ngā whakaurunga, ngā rauemi me ngā kaupapa o tō tātou rohe.	<p>Whakatū rōpū kaumātua hei tohutohu i te poari ā-rohe.</p> <p>He tuku pūtea tonu ki ngā whakahaere me ngā mahi tikanga ā-iwi takitini e hāngai ana ki te hunga kaumātua, pērā i te hākari kirihimete, me ngā haerenga ā-pahi i te rohe ā-poari me ōna kaupapa rerekē.</p> <p>Arotake i ngā wāhi e aronuitia e te hunga kaumātua ka whakatinana ai ina ka taea e te tahua pūtea.</p> <p>Mahi tahi me ngā kaituku whare i te hāpori, te Tira Kāwana me te kāwanatanga ki te hautū kāinga papori mō te hunga kaumātua.</p>
Hanga angitūtanga e tūtaki ai te taiohi me te hunga kaumātua.	Taki tūhononga pakihī ā-rohe ake me ngā rōpū hāpori ki te whakahaere kaupapa me te hōtaka mō te hunga taiohi me te kaumātua.



Ka tautoko kaupapa mātou e whakamana kaumātua ana.

Whakaotinga 7: He māmā te haere noa

Whakaotinga 7: He māmā te haere noa

He māmā noa te hūnuku haere a te katoa mā raro, mā runga pahikara, pahi, tereina me te motokā.

Kua kī mai koutou me whakapai ake ngā hononga kawē pāhihi hei āwhina i te haere noa a te katoa. Kua tonu hononga ara tereina hōu koutou mai i te pokapū o Manukau ki Pukekohe, te kawē ā-tōpū i te rahi ki te taunga waka rererangi, kia whakaitihia te poke me te whakapai ake i te tohi tikanga hīkoi, kake pahikara, kawē pāhihi tūmatanui. He take nui te whakapai i ngā ara hīkoi ki te iwi kaumātua. Ka kōkirihiā ēnei mea hei kaupapa matua, mai i te āhuru me te āhei o te katoa, kaumātua mai, hunga aronga motuhake rānei.

Kua roa te poari e kōkiri ana ki te Tira Kāwana me Auckland Transport (AT) mō te hononga ara tereina ki te tonga me te taunga waka rererangi. I tata ake nei, he tonu ki te whakarite me te tiaki i tētahi ara whakawhitinga tōpū mai i te taunga waka rererangi ki Botany mā Manukau kua tautokohia e te poari hei tīmatanga ake.

He tahua pūtea tā te poari mō ētahi kaupapa ā-rohe iti, mai i te Tahua Kawenga Matua a ngā Poari ā-Rohe. I ngā tau tata nei i whakapaingia e mātou ngā papa hīkoi me ngā rama ā-tiriti i ngā pokapū tāone ki ēnei moni. E aro ana mātou kia rahi atu aua mahi, koia ka kōkirihiā te Tira Kāwana kia huaruatia taua tahua ki te \$20 miriona ia tau.

He ai ki tā mātou Mahere Ara Kākāriki tērā te hoahoatia o tētahi kōtuinga ara mō te hunga kake pahikara me te hīkoi mā raro. Ka tīmata tā mātou hanga i ēnei ara i roto i

ngā tau e toru e tū mai nei, me ā mātou tahua kawenga matua.

He kaupapa mahi rori matua e hiahiatia ana i ētahi ngā whakawhitinga matua i Papatoetoe me Ōtara. Ka kōkirihiā e mātou a Auckland Transport ki te whakarite i te whakawhitinga mōrearea a ngā rori o Preston / East Tāmaki / Ormiston hei mahi matua rawa mā rātou.

Mō te rahinga o te wā he māngai noa iho mātou hei hora i ō koutou whakaaro ki mua i ngā mana whakatau kaupapa. Ka mahi nui tonu mātou ki te whakapau ngao ki ēnei whāinga nā tō mātou mōhio he take nui ēnei ki a koutou.

He ai ki tā mātou Mahere Ara Kākāriki tērā o te hoahoatia o tētahi kōtuinga ara mō te hunga kake pahikara me te hīkoi mā raro. Ka tīmata tā mātou hanga i ēnei ara i roto i ngā tau e toru e tū mai nei, me ā mātou tahua kawenga matua.



Te pū whakawhitinga ā-pahi o Ōtara.

Whakaotinga 7: He māmā te haere noa

Whāinga	Ngā kaupapa matua
He māmā noa te hūnuku haere a te katoa mā raro, mā runga pahikara, pahi, tereina me te motoka.	<p>He kōkiri ki te Tira Kāwana kia huaruatia te Tahua Pūtea Kawenga Matua a ngā Poari ā-Rohe ki te \$20 miriona ia tau me te whakarite pūtea ki te Tahua 10-tau.</p> <p>Kōkiri i a Auckand Transport (AT) kia maha ake ngā wharau tatari pahi me te whakapai ake i ngā papa hīkoi me ngā ara mō te hunga haere mā raro me te eke pahikara.</p> <p>Kōkiri i a AT ki te rārangi anō i te whakawhitinga o ngā rori o Preston / Ormiston / East Tāmaki.</p> <p>Kōkiri i a AT ki te rārangi anō i te whakawhitinga o ngā rori o Station / Portage / Gray.</p> <p>Mahi tahi me AT ki te tuku pūtea me te whakarite ara tōtika puta noa i ngā papa rēhia me ngā ātea tūmatanui kua tohia e te Mahere Ara Kākāriki o Ōtara ki Papatoetoe.</p>
Hononga rerenga tereina ki te takiwa whānui.	He kōkiri ki te Tira Kāwana mō tētahi ara hei kawē ā-tōpū i te rahi, me te whai wāhi mō te kawenga ara tereina mai i te taunga waka rererangi ki Botany me te hononga whaka-te-tonga ki Pukekohe.



HEI TĀ KOUTOU KI A MĀTOU

- “Mehemea he \$10 mano āku, ka hangā e au he ara hīkoinga mā raro mō te hunga hauā me ngā kaumātua i te rori o Swaffield ahu atu ki te hōhipera o Middlemore.”

Te whakatutuki i tā mātou mahere

Hei whakatutuki i tā mātou mahere tērā mātou ka:

- rārangi i te tahua kia aro ki ngā mahi a te mahere
- whakamahi tika i ā mātou rawa pērā i ngā pokapū hapori me ngā papa rēhia
- whakarite whāinga mā ngā kaimahi a te kaunihera kei a rātou te kawenga e hora ai ā mātou hōtaka mahi ā-tau
- mahi tahi me ētahi atu, mai i ngā rōpū hapori me ō mātou hoa, ki te hora kaupapa me ngā ratonga
- kōkiri i ō koutou whakaaro mō ngā take nui o te rohe.

I ētahi wā, heoi anō te mea e taea ana e mātou ko te kōkiri noa iho i ō koutou whakaaro nā te mea kāhore i a mātou te mana whakatau kaupapa, te tahua rānei ki te mahi i te mahi. Ina tae ki tērā, ka whakapauhia tō mātou kaha ki te tohe i te kaiwhakatau tōtika. Ko tā mātou he tū hei māngai mō koutou, mā te whakatakoto kōrero ōkawa, kia mōhio ai te kaiwhakatau kaupapa ki ō koutou whakaaro me tā mātou tautoko i aua whakaaro.

Ka kitea ngā kōrero mō te tuku tahua i te whārangi 44.

Te whakamana hapori

E kimi ana mātou kia whiwhi kia āhei noa te whai mana o ō tātou hapori. Kia taea ai tēnei me whakarongo mātou ki ngā mea e hiahia ana koutou kia eke, he taki i te ahunga o ngā rawa a te kaunihera ki ngā manako o te hapori me te tautoko i ngā hapori tini āhua e whai pānga atu ki ngā mea e aronui me te pā motuhake ki a rātou.

Ka āta rārangitia e mātou ko ngā mahi e aratakihia ana e te hapori, e whakahau me te tautoko i te iwi ahakoa nō hea, kia whāi wāhi tūturu ai ki ngā mahi a te hapori, kia kaha te whakamahi i ō rātou pūkenga kē, arohanga, tuku āwhina. Ka mahi tahi mātou me wai atu rānei kia āhei ai te eke o ngā manako o ngā hapori.

Te mahi tahi me te Māori

Ko te kawē i ngā here o te Kaunihera o Tāmaki Makaurau ki te Māori i ngā rohe he mea nui mō ngā poari ā-rohe. E herea ana te kaunihera ki ana kawenga i raro i Te Tiriti o Waitangi me ana here ā-ture whānui atu ki te Māori.

He wāhanga o tēnei herenga, ka mahi tonu te poari ki te whakatupu me te whakamana i ōna whanaungatanga me ngā mana whenua. Ka mahi mātou ki te hora kōrero rangatira ki te rangatira. Nā ngā whakahokinga kōrero mō tēnei mahere i whakatūturu te hua o te tūtakitaki tonu o te poari me ngā mana whenua.

E tautoko ana te poari i a Whiria Te Muka Tangata / Te Pou Tarāwaho Takinga ā-Māori. He mea tēnei e aro ai te poari ki te tiaki i ngā tika o te Māori ka tae ana ki ngā kaupapa me ngā mahi a te poari, te aro me te tautoko i ngā hiahia me ngā tūmanako o te iwi Māori.

Mai i te tau 2015 i mahi tahi ai ngā mana whenua me ngā māngai o te poari ā-rohe kia whai wāhi i te Māori ki ngā whakataunga kaupapa a te poari ā-rohe. E waru ngā whāinga kua whakaaetia hei papa mō ngā hōtaka mahi i waenga i ngā mana whenua me ngā poari ā-rohe.

Ina tata nei ka whakamanahia he papa whakaae hononga me ōna tukanga e taea ai te whakauru ki tētahi hononga mana kāwana ōkawa me ngā mana whenua o te rohe whānui o Tāmaki Makaurau.

E hanga kaupapa ana mātou e āhei ai ngā mana whenua ki te whakarite taumata whakaaro, te tohu tikanga hāngai ki te katoa, me ngā mea e āhei ai te mahi me te tautoko a tētahi i tētahi. E aro ana mātou kia whai hua te uru a te Māori ki ngā mahi tōrangapū, pērā i ngā whakahaere a Te Ao Māori 101 hei kaupapa whakangungu kaitono pōti ā-rohe nā ngā mana whenua i waihanga ka hora.

E whakapono ana mātou ko ngā hua o tēnei mahere he mea e tupu pakari ai ngā hapori Māori, tētahi anō o ngā arohanga o te tarāwaho.

He kaupapa hoki a mātou mō te Māori motuhake. Ko mātou te kaituku whenua me te tahua nui tonu hei whakatū hōu i te marae ā-tāone ki te Papa Rēhia o Ngāti Ōtara (Te Rongo-nui-o-Naki), kei te tuku whenua hoki mātou mō te marae ā-motu hōu i Puhinui.

Ka tautoko tonu mātou i ngā mahi kaitiaki a ngā mana whenua. Ka tautoko hoki i te ngā whakarite matua a te Māori hei ārai me te whakaora anō i ngā wāhi hiranga ā-iwi, te ākau o Manukau me te ākau o Tāmaki me ērā atu o ngā ara wai. Ka mahi tahi mātou me ngā mana whenua ki te whakaingoa i ngā whakaurunga hōu a te kanihera, ngā rori, ngā papa rēhia e kitea ai te āhua o ā tātou taonga ā-iwi tuku iho.

Nga mana whenua e tohi ana i ō rātou pānga ki te rohe ā-poari

Iwi / hapū	Nga rōpū kaitaki mana whenua
Te Kawerau a Maki	Te Kawerau Iwi Tribal Authority
Ngāi Tai ki Tāmaki	Ngāi Tai ki Tāmaki Trust
Ngāti Te Ata Waiohua	Te Ara Rangatū o Te Iwi o Ngāti Te Ata Waiohua
Te Akitai Waiohua	Te Akitai Waiohua Iwi Authority
Te Ahiwaru Waiohua	Makaurau Marae Māori Trust
Ngāti Paoa	Ngāti Paoa Iwi Trust
Ngāti Whanaunga	Ngāti Whanaunga Incorporated
Ngāti Maru	Ngāti Maru Rūnanga Incorporated
Ngāti Tamaterā	Ngāti Tamaterā Settlement Trust
Ngāti Tamaoho	Ngāti Tamaoho Settlement Trust
Waikato-Tainui	Waikato-Tainui Te Kauhanganui Incorporated

He kōrero pūtea tahua

Ko te tikanga o tēnei wāhanga he hora kōrero mō ngā take tuku tahua pūtea a te poari ā-rohe.

Me pēhea te toha tahua ki ngā poari ā-rohe

E tohaina ana ngā tahua ki ngā poari mā roto mai i ngā tukanga whakarite pūtea a te kaunihera. He mahi tēnei nā ngā whakarite Tahua Pūtea 10-tau (Te Mahere Pae-tawhiti) a te Tira Kāwana ia toru tau, me te tahua pūtea ia tau. Ko ngā whakaaetanga a ngā poari ā-rohe, i whakahuaina ake i te whārangi 11, ka whai wāhi ki te tahua ā-tau.

Ko te tirohanga tahua whānui mō te Poari ā-rohe o Māngere-Ōtāhuhu o te tau pūtea 2017/2018 kei roto i te Āpitianga 1 i te whārangi 42.

Ko ngā tukanga whakarite pūtea a te kaunihera he toha i ngā tahua kua oti te kohikohi i ngā huarahi moni pērā i ngā reiti me ngā utu iwi i whiwhi. E whai wāhi ana hoki ia ki te whakarite pae mahi mō ngā ratonga a te kaunihera me te uru ki ngā paerewa mahi kua whakaritea kē.

Ko te ito o ngā kōrero mō ngā pae ratonga mō ngā mahi ā-rohe ake kei te Āpitianga 2 i te whārangi 44.

Te Tahua 10-tau a te Kaunihera o Tāmaki Makaurau 2018-2028

Ā te Hune 2018, ka whakapūmautia e te Tira Kāwana te tahua pūtea 10-tau, 2018-2028 i whai wāhi ai ngā mahere a ngā poari ā-rohe. Me aro te tahua 10-tau ki ngā hiahia katoa o Tāmaki Makaurau ka whakatau tika ai ki te tiaki i ngā reiti me ērā atu utu ki te kaunihera kia ea. He pānga tō ēnei mahi whakatau tika ki te āhei o ngā poari ā-rohe ki te whakatinana i ā rātou mahere ā-rohe.

Te Tahua Poari ā-rohe Haupū Rawa a Auckland Transport

E wātea ana ki ngā poari ā-rohe he tahua mai i te Tahua Poari ā-rohe Haupū Rawa a Auckland Transport kua meatia hei toha ki ngā kaupapa kawekawe iti noa nei.

Ko te tahua i tukuna mai ki te Poari ā-rohe o Ōtara ki Papatoetoe mō te tau 2017/2018 he \$595,000.

Te āhua whakapau a ngā poari ā-rohe i ā rātou tahua

Te rahinga o te tahua kei ngā poari ā-rohe kua rite kē hei whakahaere i ā mātou ratonga me te tiaki i ā mātou rawa ā-rohe ake mai i ngā papa rēhia, pokapū hapori, whare pukapuka me ngā hōro.

He tahua e āhei te toha i runga i tō rātou ake hiahia ki ngā kaupapa me ngā hōtaka ā-rohe ake e aro nuitia ana e ō tātou hapori.

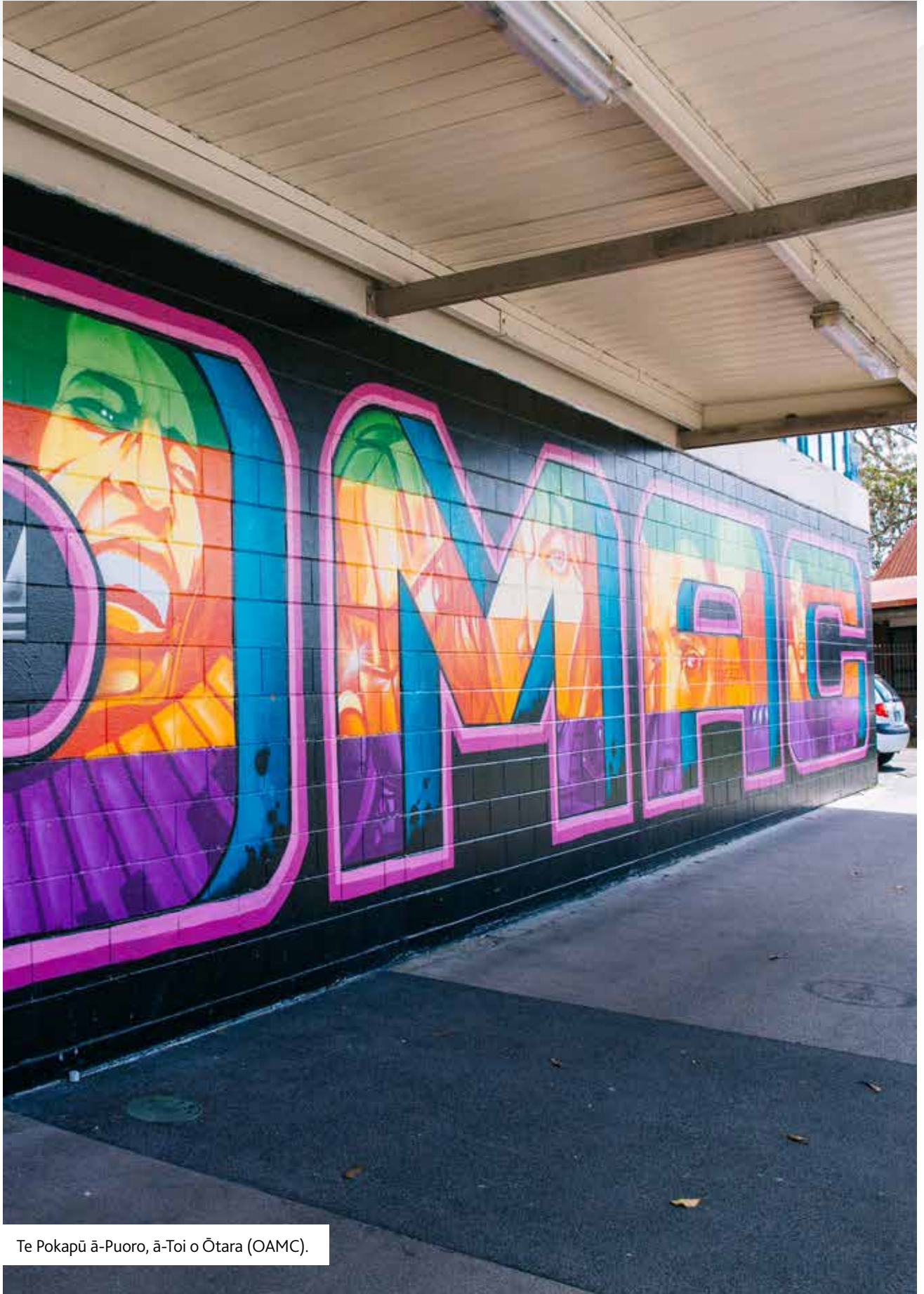
Tērā ētahi atu kōrero mō ngā poari ā-rohe te kitea i raro i te Kaupapa Here Tuku Pūtea Poari ā-Rohe i te pae tukutuku a te kaunihera i, aucklandcouncil.govt.nz.

I tēnei wā e kimi putanga ana te kaunihera e ngāwari ake ai te whakahaere tahua pūtea a ngā poari ā-rohe.

Āpitihanga 1: Tirohanga take pūtea whānui

Ngā moni whiwhi, whakapaunga me ngā tahua haupū rawa mō ngā mahi a te Poari ā-rohe o Ōtara-Papatoetoe mai i te 1 o Hurae 2017 ki te 30 o Hune 2018

Te Mahere Take Tahua Pūtea ā-Tau	2017/2018 (ā-mano tāra)
Ngā moni whiwhi whakahaere mahi	
Ratonga hapori ā-rohe	356
Papa rēhia, hākinakina, tākaro pūangi ā-rohe	3,549
Whakarite mahere, mahi whakawhanake ā-rohe	-
Ngā mahi tiaki i te taiao ā-rohe	-
Katoa o ngā moni whiwhi whakahaere mahi	3,905
Ngā whakapaunga whakahaere mahi	
Ratonga hapori ā-rohe	6,218
Take kāwanatanga ā-rohe	1,392
Papa rēhia, hākinakina, tākaro pūangi ā-rohe	8,227
Whakarite mahere, mahi whakawhanake ā-rohe	1,098
Ngā mahi tiaki i te taiao ā-rohe	110
Katoa o ngā whakapaunga whakahaere mahi	17,045
Morenga i whakapaua hei whakahaere mahi	
Whakapaunga haupū rawa	
Ratonga hapori ā-rohe	1,999
Take kāwanatanga ā-rohe	-
Papa rēhia, hākinakina, tākaro pūangi ā-rohe	4,369
Whakarite mahere, mahi whakawhanake ā-rohe	-
Ngā mahi tiaki i te taiao ā-rohe	-
Katoa o ngā whakapaunga haupū rawa	6,368



Te Pokapū ā-Puoro, ā-Toi o Ōtara (OAMC).

Āpitihianga 2: Kaupapa ā-rohe me ngā paerewa ā-mahi

Ko ngā kawenga, i whakaritea tūturu mai i raro i te ture, i tohaina mai rānei ki ngā poari ā-rohe, me whakarāpopoto ki ngā mahi ā-rohe ake. E whakaahuatia mai ana ēnei i te rārangi whai me ngā ripoata mō ngā paerewa ā-mahi.

He kōrero atu mō ngā paerewa ā-mahi, tae atu ki ngā inenga āhua mahi me ngā tohu taumata ā-mahi, ka kitea i roto i te Whakaatanga Poari ā-rohe o Māngere-Ōtāhuhu 2017/2018. Ka āheitia atu tēnei i te pae tukutuku a te kaunihera, aucklandcouncil.govt.nz.



Te tohu o Papatoetoe Tawhito.

Ngā kaupapa ā-rohe ake

Ngā papa rēhia, hākinakina, tākarō pūangi

Ko ēnei huinga kaupapa e pā ana ki ngā whakahaere, te whakarite papa rēhia me ngā wāhi tū wātea me ngā mahi tākarō pūangi kūpapa noa, hihiri rānei.

Ngā rīpoata paerewa ā-mahi

Whakarite angitūtanga tākarō pūangi hei tiaki i ngā hiahia papa rēhia, papa rāhui, ā-tāhuna o te hapori.

Whakarite papa hākinakina e rite ana mō te kaupapa e aro ana ki ngā hiahia o te hapori.

Whakarite hōtaka me ngā whakaurunga e tōtika te taea tonu o ngā mahi a te iwi o Tāmaki Makaurau.

Ngā ratonga ā-rohe ake

Ko ēnei huinga kaupapa e pā ana ki ngā whakapikinga i ngā hua ki te hapori mā te whakarite wāhi ake me ngā wāhi tū wātea hei ako me te tākarō a te hapori mā te whakauru i ngā mahi toi me ngā tikanga ā-iwi ki te ao ia rā o te hunga o Tāmaki Makaurau. Ētahi kaupapa matua ko ngā whare pukapuka me ngā kōrero e pā ana ki ngā mahi toi, hapori me ngā mea ka whakahaeretia i te rohe.

Whakarite urunga whare pukapuka āhuru, tuwhera, tau te mauri e tautoko ana i te horanga hōtaka ako hiranga nui me ōna ratonga tōtika ki ngā hapori ake o te rohe.

He mea kia āhei te iwi o Tāmaki Makaurau me ngā hapori ki te puaki whakaaro, te whakapiki hauora te hautū kōrero hāngai ki te iwi, ngā tahua, whakahaere, me ngā āheinga.

Hora i ngā āhua whakahaere, hōtaka me ngā kaupapa hei hāpai i te āhuru noa, te hono o Tāmaki Makaurau, me te whai pānga ki tō rātou tāone nui me ngā hapori.

Whakarite urunga pāpori āhuru, tuwhera, e tāhei ai te iwi o Tāmaki Makaurau e tautoko ana i te hanga kāinga me te hapori momoho.

Ngā mahi ā-mahere me te whakawhanake ā-rohe ake

Ko ēnei huinga kaupapa e pā ana ki te hanga mahere ā-rohe kaipakihi, te āhua o ngā tiriti ā-rohe ake, ngā pokapū ā-tāone, taiao ā-rohe ake me te tiaki taonga tuku iho.

Whakawhanake wāhi taki pakihī ā-rohe me ngā pōkapū tāone hei wāhi nui mō te whakahaere pakihī.

Ngā mahi tiaki i te taiao ā-rohe ake

Te mahi tahi ki ngā hapori me te iwi Māori ki te tiaki i te taiao ake o te rohe e whakapai ake ana i ngā hua ki te taiao (mā te aro ki ngā tikanga kanorau-koiora taketake, te hauora o te wai me te toko kaupapa e au tonu ai te oranga) e whiwhi ai te Māori, te oranga me te ōhanga hapori.

Whakarite kaiarataki me te tautoko i te ārai me te tiaki i ngā taiao taketake o te rohe, ngā wāhi tuku iho me ngā tikanga ā-iwi tuku iho o te ao Māori.

Ngā māhi kāwanatanga ā-rohe ake

Ko ēnei huinga kaupapa e tautoko ana i ngā 21 poari ā-rohe e whakakanohi nei i ō rātou hapori, me te whakatau kaupapa mō ngā mahi ā-rohe ake. I roto i aua mahi ko te taki kōrero rautaki, te ārahi i ngā whakaritenga mahere me te whakawhanake whakaaetanga poari ā-rohe, te tūhonohono hapori tae atu ki ngā whirinakitanga ki te mana whenua me ngā hapori Māori, he tautoko mahi kāwanatanga ā-iwi me ngā mahi whakahaere ā-tari.

Ko ngā tikanga hei ine i ēnei kāpuinga mahi kei raro i te Tōpūranga Kāwanatanga ā-Rohe kei Te Mahere Pae-tawhiti 2015-2025 kei reira nei ngā inenga arotakenga e tau ai te whai pānga ki ngā tikanga whānui whakatau kaupapa a te kaunihera o Tāmaki Makaurau, me te whai wāhi ki ngā whakatau kaupapa ā-rohe ake. Kāhore he panonitanga nui mō ngā aranga mō ngā tau 2017/2018.

Ngā mema o tō Poari ā-Rohe o Ōtara-Papatoetoe



Lotu Fuli – Heamana

Waea: 021 242 3713
lotu.fuli@aucklandcouncil.govt.nz



Ross Robertson – Heamana Tuarua

Waea: 027 492 3245
ross.robertson@aucklandcouncil.govt.nz



Apulu Reece Autagavaia

Waea: 021 723 146
reece.autagavaia@aucklandcouncil.govt.nz



Ashraf Choudhary

Waea: 021 799 573
ashraf.choudhary@aucklandcouncil.govt.nz



Mary Gush

Waea: 021 287 8800
mary.gush@aucklandcouncil.govt.nz



Donna Lee

Waea: 021 285 6611
donna.lee@aucklandcouncil.govt.nz



Dawn Trenberth

Waea: 021 729 302
dawn.trenberth@aucklandcouncil.govt.nz



Te Whare o te RSA o Papatoetoe me te whakaaturanga a Regan Gentry, 'Learning Your Stripes'.

Papa kupu

RĀRANGI KUPU	WHAKAMĀRAMA	RĀRANGI KUPU	WHAKAMĀRAMA
angitūtanga	opportunity	kāwanatanga ā-rohe	local government
ātea tūmatanui	public spaces	kōkiri	advocate
hangarua	recycle	koromatua	mayor
hātepe	process	kōtuinga whakaoranga rawa mō te tonga	southern resource recovery network
here ā-ture	statutory obligations	Mahere a ngā Poari ā-Rohe	Local Board Plans
Hōpua Rau Tau o Papatoetoe	Papatoetoe Centennial Pools	Mahere a Tāmaki Makaurau	Auckland Plan
hōtaka mahi ā-tau	annual work programme	Mahere Pae-tawhiti	the Long-term Plan
hua	outcome	mahi kaihara	crime
hunga kaipakihi	businesses	mahi kairau ā-tiriti	street prostitution
Hurihanga Hōu o Manukau	Manukau Transformation	mahi tāpoi	tourism
Ipu Hākinakina o Manukau	Manukau Sports Bowl	Mana o ngā Tūpuna Maunga o Tāmaki Makaurau	Tūpuna Maunga o Tāmaki Makaurau Authority
iwi kāinga	residents	māwhitiwhiti ā-pahi	bus interchange
kai taru whakawairangi	drug-taking	moni whiwhi	income
kaiwhakawhanake tūmataiti	private developer	moni whiwhi whakahaere mahi	operating revenue
kaiwhakawhanake tūmatanui	public developer	Ōtara Neat Streets	Ngā Tiriti Tau o Ōtara
kanorau-koiora taketake	indigenous biodiversity	Ngā Taiwhanga o Papatoetoe	Papatotoe Chambers
kaupapa ā-rohe	local activities	Ngā Tohu o te Te Awa o Aotearoa	the New Zealand River Awards
Kaupapa Here Tuku Pūtea Poari ā-Rohe	Local Board Funding Policy	pae tukutuku	website
kāwanatanga	government	pakihi	business
kāwanatanga ā-iwi	democracy	papa hiko	footpath

RĀRANGI KUPU	WHAKAMĀRAMA	RĀRANGI KUPU	WHAKAMĀRAMA
papa kiri tāwhaiwhai	artificial surfaces	taonga ā-motu	national treasure
papa purunga whenua	landfill	Tāpoi Tāmaki Makaurau, āna Mahi me āna Whanake Ōhanga	Auckland Tourism, Events and Economic Development (ATEED)
Papa Rāhui Tākaro Pūangi o Papatoetoe	Papatoetoe Recreation Reserve	tari i raro i te mana o te kaunihera	council-controlled organisations (CCOs)
Papa Tākaro o Rongomai	Rongomai Park	Te Papa Rēhi Motokā o Colin Dale	The Colin Dale Motorsport Park
papa rēhia	parks	Te Pokapū Puoro, ā-Toi o Ōtara	The Ōtara Music and Arts Centre
pīnono	begging	Te Tira Taiohi o Ōtara ki Papatoetoe	The Ōtara-Papatoetoe Youth Squad
poari ā-rohe	local board	Te Whare Pokapū o te Hapori o Tāmaki ki te Rāwhiti	The East Tāmaki Community Centre
puka rautaki	strategic document	tikanga kawē pāhihi tūmatanui	public transport
Pūkaki o Puhinui	Puhinui Stream	Tira Kāwana	Governing Body
pūkete raraunga	data source	tohe	advocate
pūnaha mata whakaata marumaru	closed circuit television security system	wāhi taketake	natural heritage site
pūnaha tātari wai āwha	stormwater filtration system	Whakaaetanga a ngā Poari ā-Rohe	Local Board Agreements
rohe ā-poari	board area	whakaotinga	outcome
rōpū ā-rohe	local organisation	whakapaunga haupū rawa	capital expenditure
rōpū kaupakihi	business association	whakapaunga whakahaere mahi	operating expenditure
Rōpū o te Wahapū o Manukau	Manukau Harbour Forum	whakaurunga ā-rohe	local facilities
Tahua Pūtea ā-Tau	Annual Budget	whakaurunga tūmatanui	public facilities
Tahua Poari ā-rohe Haupū Rawa a Auckland Transport	Auckland Transport's Local Board Transport Capital Fund	whakawhitinga ā-rori	road crossing
Tahua Pūtea 10-tau a Te Kaunihera o Tāmaki Makaurau	Auckland Council's 10-year Budget	whare nui ā-tāone	town hall
taiao taketake	natural environment	whare tīni kākahu	changing rooms
tākaro pūangi	recreation	Whiria Te Muka Tangata / Te Pou Tarāwaho Takinga ā-Māori	Whiria Te Muka Tangata / The Māori Responsiveness Framework
Takiwā Whakapiki Pakihi	Business Improvement Districts (BIDs)		



Ka whakawātea te Kaunihera o Tāmaki Makaurau i tōna whaipānga ki tētahi mea ahakoa i ahu mai i hea mō tētahi mahi i hua nā te whakapono ki tēnei puka, nā tētahi hapa, potonga, hēnga, mahuetanga rānei e mau ana i roto i a ia.

18-PRO-0648
ISSN 2253-1203 (Print)
ISSN 2230-6838 (PDF)