

TE MAHERE Ā-ROHE O RODNEY 2017

Rodney Local Board Plan 2017



Mihi

Tēnā, ngā mihi te tukuna atu nei ki a koutou
e nga manawhenua
e kapekape tonu nei
i ngā ahikā roa e horapa mai nā
ki te taha whakararo o te tipua tāone nei
o Tāmaki Makaurau.
Kia pāorooro tēnei karere
mā runga i ō maunga whakahī.
Kia tīmata ake au i te Kumeū,
ka rere whakawaho ki te one tapu o Muriwai.
Kia hoki ake ki uta, ko Tauwhare ki te rāwhiti,
a Tarawera ki te raki,
ki te taha whakaroto
ko Tuhirangi rāua ko Te Atuanui
Kia kauhoe ngā mihi mā te moana
ki te Araparera
ko koe tēnā e Taranaki,
ka kapi ngā pou tauawhi i a te Kaipara
i hua ai te kōrero,
*“E tupu i wīwī, i wāwā, tūria i te wera,
piri ki te rito o te rengarenga,
waiho me whakapakari ki te hua o te kawariki.”*
Ināianeī me māwhiti aku kupu ki Kaiwaka,
ki Pukekaroro ki te raraunga o te tini i mate,
te aroha tonutia i muri nei.
Kia tahuri iho rā ia ki Matakana,
ko Tamahunga tērā e tū mai rā i te pae.
Ka hīkoi aku mihi mā ngā kāhiwi
kia heke iho ki te awa o Pūhoi
kia rere aku mihi ki te tuawhenua
i nohoa e te iti me te rahi.
Kia ū mai anō taku haere ki Huapai,
ā-tangata, ā-whenua.
Nō rātou te whiwhi, nō mātou te whiwhi,
kia kī ake ai tātou katoa,
*“He rohenga tangata,
he iwi tōpuni,
mōwai tonu te whenua e takoto nei e.”*

Our greetings and salutations to you
the mana whenua
who continue to tend
the historical fires that encompass
this great city
of Auckland.
May this message echo
across your noble mountains.
Let me begin at Kumeū
then turn outwards to the sacred sands of Muriwai.
I hook inward again where eastward, is Tauwhare,
to the north is Tarawera,
and inland stands
Tuhirangi and Atuanui.
Let this greeting travel the inland sea
to Araparera
where Taranaki
completes the guardians of the Kaipara,
who inspired the proclamation,
*“People will grow here and there, upright in the heat,
hiding like the shoots of the rengarenga,
and maturing like the fruit of the kawariki.”*
Now let my words cross to Kaiwaka
and Pukekaroro, the scene of past losses
that are still mourned today.
Turning then to Matakana,
where stands Tamahunga on the horizon.
Let this greeting follow the ridgeline
down to the Pūhoi River
where it can return inland to the valleys
where the original settlers came.
Our journey ends at Huapai,
of people, and land.
Their good fortune is our shared providence,
so, the axiom,
*“The community
are people in communion,
and a calm lies over the land.”*

Ngā upoko kōrero

Contents

■ From the Chair	4
■ Our plan at a glance	6
■ Rodney Local Board area	8
■ About local boards and our plans	11
■ Developing our plan.....	13
■ Outcomes:	
■ We can get around easily and safely	15
■ Communities are influential and empowered.....	18
■ Parks and sports facilities that everyone can enjoy.....	23
■ Our harbours, waterways and environment are cared for, protected and healthy	27
■ Arts and culture is vibrant and strong	30
■ Carrying out our plan.....	34
■ Funding information.....	36
■ Appendix 1: Financial overview.....	38
■ Appendix 2: Local activities and levels of service	40
■ Your Rodney Local Board members.....	42



On the cover: An early morning surfer catches the wave at Anchor Bay in Tāwharanui Regional Park.

He kōrero mai i te Heamana From the Chair



This Rodney Local Board Plan sets out priorities and guides the local board's activities for the next three years. We've made a huge effort to engage as widely as possible. We've read your feedback and submissions and we've listened to your ideas on how to make Rodney an even better place to live.

A local board plan outlines a strategic vision for the future. Given the size of Rodney, prioritising what needs to get done is quite a challenge. We need to manage ratepayers' funds carefully to achieve the most effective outcomes. You may not see a specific project for your area. Such details will be discussed and agreed annually as we prepare budgets and agree on deliverables.

The themes in this plan, expressed as outcomes, include: transport infrastructure that enables us to get around easily and safely; communities taking the lead on projects in their areas; parks and sports

facilities we all enjoy; clean harbours and waterways; and spaces in our townships that create a sense of community.

In addition, we will continue to stand up for issues that are important, particularly around transport and planning for growth, to ensure the best outcomes for the community. Growth brings opportunity, including the potential for greater investment in new facilities and infrastructure. We will be both on top of growth pressures and well prepared for future growth.

We recognise residents want to keep rates at acceptable levels and so we need to be innovative about funding. One of the key initiatives in this plan is looking at a targeted rate to fast-track additional transport infrastructure. We are also looking at potential partnerships to carry out environmental work, build multisport buildings, progress greenways plans and complete town centre upgrades.

“

We've read your feedback and submissions and we've listened to your ideas on how to make Rodney an even better place to live.

We're proud of the success we have had in the past working with community groups, businesses and our mana whenua partners to get projects delivered on the ground and we look forward to building these relationships.

Local board members and I look forward to working with you to deliver this ambitious but clear vision for Rodney.

Beth Houlbrooke

Chairperson,
Rodney Local Board

He aronga poto i tā mātou mahere

Our plan at a glance

We will focus on five outcomes to guide our work and make Rodney a better community for all. Our aspirations are outlined below.



Expanding Rodney's footpath network with a focus on improving public safety.

Outcome: We can get around easily and safely

Our transport infrastructure keeps pace with the needs of our communities. Our growing townships have the same choices for quality public transport as the rest of Auckland.



We will provide assistance to communities to deliver more community-led initiatives.

Outcome: Communities are influential and empowered

Our communities influence local decision-making. They are empowered and enabled to act and take the lead on community projects and in the planning for their areas.



We will continue to develop our sports fields and parks, making them suitable for year-round use.

Outcome: Parks and sports facilities that everyone can enjoy

Our local parks and sports facilities cater to a wide range of sporting and recreational interests. They are easily accessible, connecting our towns, villages and growth areas.



We will expand our partnerships with landowners and our community to plant river banks and exclude stock from our rivers.

Outcome: Our harbours, waterways and environment are cared for, protected and healthy

Our harbours and the rivers and streams that feed them are healthy and thriving natural marine environments. Our stormwater and wastewater services are reliable, well maintained and environmentally friendly, minimising downstream environmental impacts.



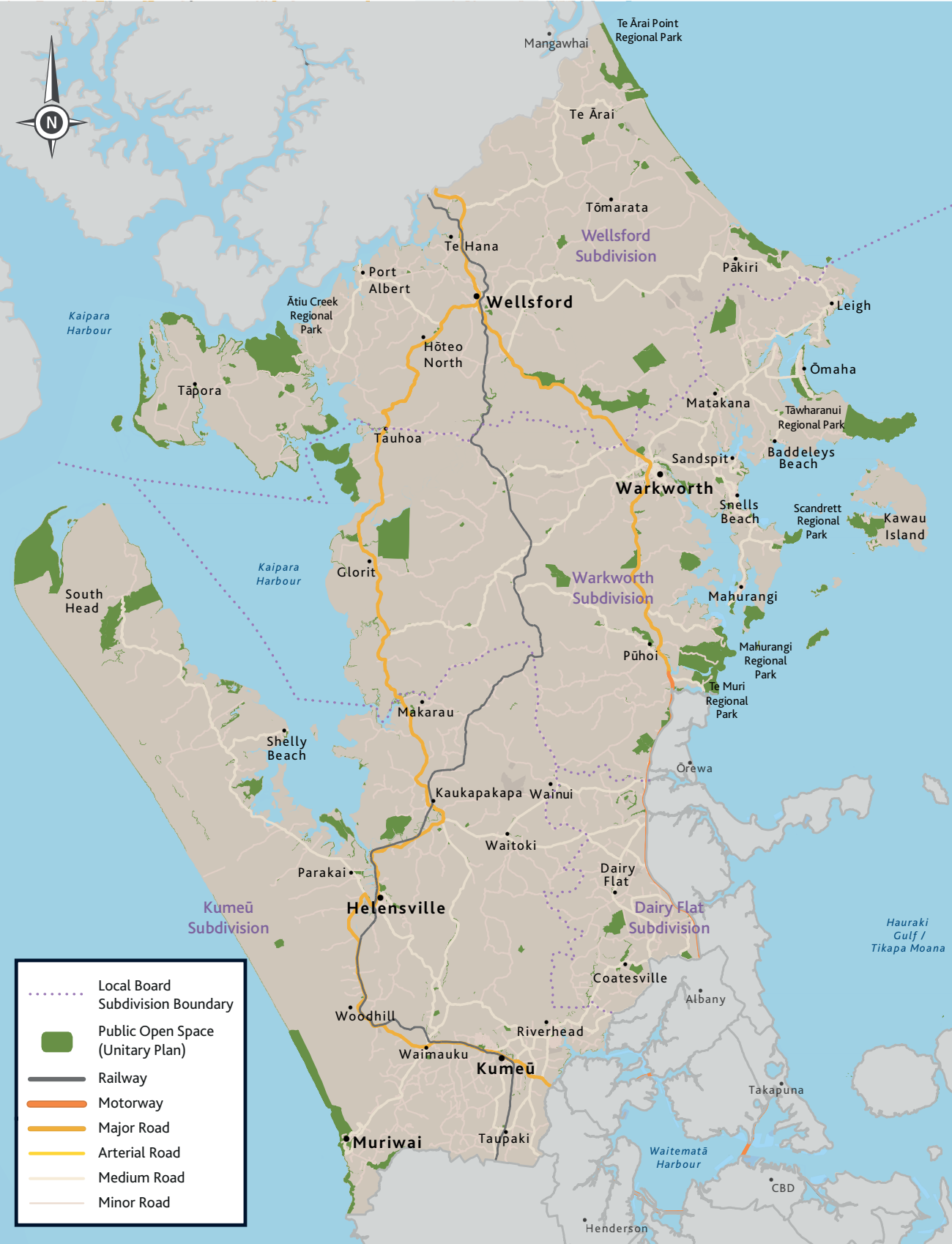
We support community-run events and provide grants for arts centres.

Outcome: Arts and culture is vibrant and strong

Local facilities are the heart of our communities. They are well used and cared for by communities that manage them.

Te Rohe ā-Poari o Rodney

Rodney Local Board area



Rodney Local Board
area makes up

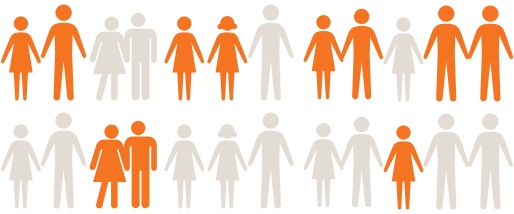
46%

of the Auckland region's
land mass

A population of nearly

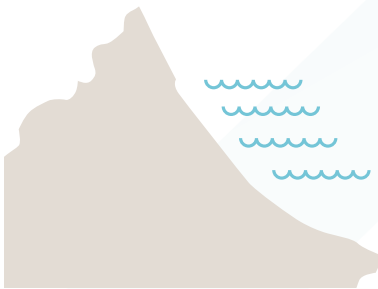
65,000

(4 per cent of the region's
population)



This is expected to grow
to 85,900 by 2033

37
towns and
villages



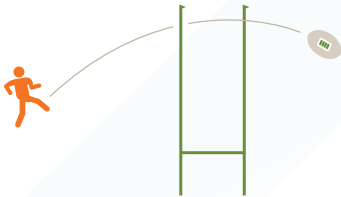
More than

1500

km of coastline

We are home to:
More than

200
local parks



5
libraries



23
council-owned
community halls



Data sources: Statistics New Zealand Population Estimates (2017) and Population Projections (2013-base).



Jordan Balle and Wiremu McCarthy at their fruit chip stall at Matakana Village Market.

He kōrero mō ngā poari ā-rohe me ā mātou mahere

About local boards and our plans

Auckland Council has a unique model of local government in New Zealand, made up of the Governing Body (the mayor and 20 Governing Body members) and 21 local boards. The Governing Body focuses on Auckland-wide issues while local boards are responsible for decision-making on local issues, activities and services and providing input into regional strategies, policies and plans.

These local issues, activities and services include:

- supporting local arts, culture, events and sport and recreation
- providing grants and partnering with local organisations to deliver community services
- maintaining and upgrading town centres and facilities including parks, libraries and halls
- caring for the environment and preserving heritage.

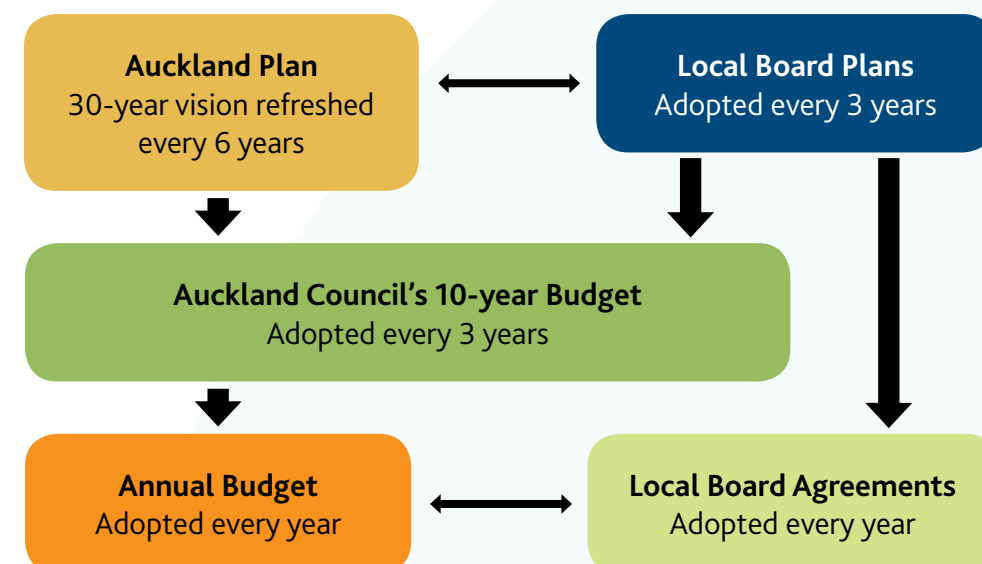
Local boards also have a role in representing the view of their communities on issues of local importance.

About local board plans

Local board plans are strategic documents that are developed every three years to set a direction for local boards. Reflecting community priorities and preferences, the plans guide local board activity, funding and investment decisions. They also influence local board input into regional strategies and plans, including the Auckland Plan (the 30-year vision for Auckland), the council's 10-year Budget (Long-term Plan) and annual budgets.

Local board agreements

A key role of local board plans is to provide a basis for developing annual local board agreements. Agreed between the council's Governing Body and local boards, these are part of Auckland Council's budget setting process and they set out local funding priorities, budgets, levels of service, performance measures and targets by activity for each financial year. Each local board develops annual work programmes alongside adoption of their local board agreement.





Residential development
at Station Road, Huapai.

Te whakawhanake i tā mātou mahere Developing our plan

Our plan comprises aspirational outcomes, objectives we want to achieve and some of the key initiatives we will carry out to achieve them. To make this happen will take the efforts of many working together.

During May and June 2017 we consulted on a draft of this plan. We received almost 1600 submissions and spoke to 267 people who attended our engagement events. The draft was developed by considering what we know about our community, having worked closely with you over the last six years, and your views on a wide range of things.

Our communities are growing faster than we ever thought possible and many of the objectives and initiatives respond to that growth. It is a challenge to address growth-related issues directly, which has largely been the job of the Auckland Unitary Plan.

We are emphasising objectives which will address the issues created by growth. We have embraced the opportunities that accompany a large population, like economic growth, greater investment and the additional community capacity and desire to take the lead on projects so that you can help shape the area you want to live in.

The local board has commissioned various studies, investigations and plans to help inform the direction laid out in this plan, including:

- north Rodney swimming pool survey, needs assessment, feasibility study and funding study
- multisport needs assessment, feasibility study and business case for Warkworth
- a multisport needs assessment and feasibility study for Kumeū-Huapai
- a concept plan to turn the former Atlas site in Warkworth into a local park
- greenways plans for Wellsford, Riverhead / Waimauku / Kumeū / Huapai and Pūhoi to Pākiri (with plans for other parts of Rodney due in 2017/2018)
- a survey and accompanying report on identifying community aspirations in Kumeū-Huapai
- Kumeū arts needs assessment and feasibility study on expanding the arts centre
- Rodney Transport Projects Advocacy Plan
- Rodney Economic Development Action Plan
- a toolkit for community action planning
- Kumeū-Huapai Centre Plan
- town centre and structure plans, both community and council-led, for various towns in Rodney.

Engaging with our communities is an important part of developing this plan. We can't provide everything you ask for, but your input has provided a solid basis for this plan by identifying the issues, challenges and opportunities that we all face.

We sincerely thank everyone who has provided their opinion, input and suggestions on what would make Rodney an even better place to live, work and play.



Hayley and Milla
Farnworth on Kaspar
Street footpath.

Whakaotinga: He māmā he haumaru tō tātou hāereere noa

Outcome: We can get around easily and safely

Our transport infrastructure keeps pace with the needs of our communities. Our growing townships have the same choices for quality public transport as the rest of Auckland. Communities have access to walkways, bridleways and cycleways. Our roads are well maintained.

Rodney has 37 towns and villages and two state highways travelling the length of each coast, sometimes splitting towns and villages in two. Connecting our communities is a challenge. We don't have any control over state highways (that's central government's role) but we will continue to speak up for you and influence decision-makers like the New Zealand Transport Agency to act on areas that need fixing.

The maintenance and standards of our roads need to improve. Our communities have told us that many roads are unsafe to drive on, and hard wearing on vehicles and road users alike. We will push for an improved level of service for our local road network and work with Auckland Transport to ensure that requests for service are dealt with in a timely manner.

Auckland's growth has meant that some activities, like new subdivisions and clean fills, are increasing the number of heavy vehicles on our roads. Our roads need to be fit for purpose and able to cope with this increased load. We will push for better roads and a fairer contribution towards the costs of the increased upkeep to ensure our roads are well maintained in a timely manner.

Rodney has over 600km of unsealed roads, limited public transport and no park-and-ride facilities. To address more of Rodney's transport issues sooner we propose investigating and developing a new local targeted rate, just for Rodney.

Depending on the result of those investigations, we will carry out additional consultation on a range of costed options before implementation. Any additional rate will enable us to focus on priorities including public transport trials, park-and-ride facilities and the use of new products to seal more of our roads. We will continue to advocate for more funding from general rates to address Rodney's transport problems so that our communities get their fair share.

Over the past three years we have developed greenways plans showing potential walking, cycling and bridleway connections in and between towns and villages. Now the focus shifts to carrying out those plans and building those paths appropriately for the environment they are built in. We have community groups in Rodney who are ready and able to help us with this task. By forming partnerships with our communities we can get their help to deliver these key links.



WHAT YOU TOLD US

- “First on my list of preferences is getting Rodney’s roads safe.” – Pūhoi resident
- “I live in Riverhead and would like more footpath/cycleways connecting our community.” – Riverhead resident
- “Need a park-and-ride big enough for Wellsford people to be able to bus at least from Warkworth.” – Wellsford resident
- “Seal more of our roads (Pākiri, Tāwharanui) and more public transport from Warkworth to Auckland.” – Leigh resident



The 122 bus from Kumeū.

Our commitment

We are committed to carrying out the following key initiatives to achieve these goals, and will continue to look for other opportunities as they arise.

Outcome: We can get around easily and safely

Objective	Key initiatives
Using public transport is a viable option for getting around.	Advocate to Auckland Transport to prioritise the establishment of key public transport links and mode share in Rodney including new north-south and east-west connections. Support the establishment of park-and-ride facilities in Rodney, including advocating to Auckland Transport to expand existing facilities in neighbouring local board areas.
Essential transport improvements are funded and we can get things done when needed.	Investigate a targeted rate to pay for additional projects such as road sealing, public transport options (e.g. shuttles, buses, trains, light rail, ferries) and park-and-ride facilities and progress those projects (pending the results of the investigation and further consultation). Advocate to Auckland Transport and to the NZ Transport Agency for higher prioritisation of Rodney transport projects, such as fixes to Hill Street in Warkworth and improvements on SH16.
Our roads are safe for drivers, pedestrians and cyclists.	Work with Auckland Transport and other agencies on transport improvements with a public safety focus such as extending our footpath network. Advocate to the Governing Body and to Auckland Transport for improved road maintenance and levels of service, and addressing the impact of activities that degrade our roads.
Our communities are well connected by safe and healthy walkways, cycleways and bridleways.	Work on realising Rodney’s greenways plans, including working with our key stakeholders to complete our plans, identify priority areas, and design and build the greenways. Advocate for all new developments to include high-quality footpaths, walkways, bridleways and cycleways options.

Whakaotinga:
He whai tikanga, he whai
mana hoki te hāpori

Outcome: Communities are influential and empowered

Our communities influence local decision-making. They are empowered and enabled to act and take the lead on community projects and in the planning for their areas. Community groups and residents partner with the council and others to identify and deliver what is best for them.

Rodney makes up 46 per cent of the total land area of Auckland making us the largest local board by land mass, but with less than four per cent of the population (65,000). This makes us one of the smaller local boards and that creates a lot of challenges, which is why we highly value the work of our local communities.

There are many different communities within Rodney - some grouped around the geography of towns and villages, others sharing common pastimes, interests or backgrounds. Every community has something to contribute. We want to build and maintain relationships with as many as possible so their unique voices and points of view are heard.



Warkworth residents organised a community event to turn on the showgrounds' new floodlights.

Communities in our growth areas, particularly Warkworth and Kumeū-Huapai, Wainui and Riverhead, have asked for their areas to be well planned to accommodate growth. We will continue to give our communities a voice and advocate for infrastructure to cater for Rodney’s growth.

Communities want to take the lead identifying and delivering projects that improve the look and feel of their area, such as creating public spaces where people want to go and spend time. We will support these activities and encourage communities to take the initiative to get involved in the ongoing development of their community spaces.

There are many ways the local board can provide support. Some groups are great at getting stuck in but may need help developing their capacity and skills to take the lead on larger projects that have lasting economic and social benefits, like town centre improvements. Others need the council to partner with them to provide expertise that will help make a project successful like planning or engaging with the wider community. Some just need permission to use a small piece of public land. We can tailor our support for community groups so they can take the lead in funding and carrying out projects.



WHAT YOU TOLD US

- “People who live here have a feel for what is missing and what suits their needs and works.” – Anon
- “I think it’s great to include the community in the process which influences change in where they live.” – Riverhead resident
- “The best people to make decisions on local spaces are the locals themselves.” – Wellsford resident
- “I think a revamp would increase community spirit and connection.” – Kaukapakapa resident

Our commitment

We are committed to carrying out the following key initiatives to achieve these goals, and will continue to look for other opportunities as they arise.

Outcome: Communities are influential and empowered

Objective	Key initiatives
Communities have a say about what happens in their area.	Help communities to develop the skills, systems and partnerships they need to effectively contribute to the future development of their area.
Communities take the lead in delivering projects.	Partner with and support the community and organisations such as the Northwest District Business Improvement District with funding and other assistance so they can deliver local projects such as town centres developments in Warkworth, Helensville and Kumeū-Huapai.
Communities have the capacity, skills and support they need.	Provide resources and assistance to communities so they can build the skills they need to deliver more community-led initiatives.



Riverhead residents cleared this site, planted trees, and have built a footpath for pedestrians and cyclists.



Soccer teams playing at Warkworth Showgrounds.

Whakaotinga: He papa rēhia, urunga hākinakina e paingia e te iwi

Outcome: Parks and sports facilities that everyone can enjoy

Our local parks and sports facilities cater to a wide range of sporting and recreational interests. They are easily accessible, connecting our towns, villages and growth areas. Our parks are enjoyable places to visit and relax or be active in.

Rodney is lucky to have over 200 local parks and almost 4000 hectares of regional park land for our enjoyment. As our population continues to grow, it's getting harder to ensure these spaces can keep up with our growing recreational needs.

We want our parks and sports facilities to be easily accessible and to cater sustainably for growth. We want to enable communities to get out and enjoy our local open spaces and that requires enough parks near where we live. We will push for all new developments to have enough open space to cater for growing communities, as well as paths and other connections to bring them all together.

Rodney doesn't yet have a public swimming pool or multisport facilities, but previous work has shown a clear and growing demand for them. In recent years, we've been working to identify ways to progress these facilities and we will continue to support their development through the most efficient means available.

We have done a lot of work renewing and improving our sports parks and reserves to make them suitable for use all year round. Some of our reserves and open spaces, such as Centennial Park in Wellsford, still need work to make them more useable for the community. Some of our prime land, like Green Road, Dairy Flat, needs to be planned and developed for future activities.

We will continue to develop our major recreation spaces so the community can make the most of them throughout the year. This includes projects like perimeter paths and sports field lighting for our established reserves and understanding the community’s sports and recreation needs for our developing reserves.

Our play spaces need to be revamped into more active zones fit for a wide range of users. By revitalising some of the older, tired play equipment into something modern and exciting, we can increase its use and encourage more people to become more active, more often.



Juanita and Peter Taylor playing at the Huapai Domain playground.

Our commitment

We are committed to carrying out the following key initiatives to achieve these goals, and will continue to look for other opportunities as they arise.

Outcome: Parks and sports facilities that everyone can enjoy

Objective	Key initiatives
Communities can access quality parks, reserves and natural spaces nearby.	Continue to develop, renew and improve sports parks, fields, hardcourts and other key open spaces such as Centennial Park in Wellsford. Develop a plan to meet the future recreation needs at Green Road, Dairy Flat.
Our communities have great local options for indoor and outdoor sports and recreation.	Investigate the options for multisport facilities in Kumeū-Huapai, Warkworth and Wellsford. Support and advocate for their funding and construction. Support and advocate for the construction of a swimming pool or aquatic facility in Warkworth and identify swimming pool needs in other parts of Rodney.
Our play areas are active zones that cater to the needs of all ages and abilities.	Revitalise existing playgrounds, and build new play spaces where needed, with more challenging or multi-use equipment fit for a variety of age groups.

WHAT YOU TOLD US

- “We need more playing field/facilities and areas for organised sports. Areas need to be free to use, safe and have good parking.” – Anon
- “I want our local playground upgraded (it is old and boring). I want a scooter track with some interesting bits.” – Riverhead resident
- “Can we please have more bridle paths for riding our horses in. The roads are so dangerous these days.” – Dairy Flat resident
- “Swimming pool is absolutely essential and should be prioritised immediately.” – Warkworth resident



Jeffery Bradley, Johnny Hildreth, Taylor Bradley, Riley Bradley, Gregory Franklin and Kyle Anderson helped plant the Kaipara River.

Whakaotinga: Kei te tiakina, āraitia me te whai ora o tātou ākau, awa me te taiao

Outcome: Our harbours, waterways and environment are cared for, protected and healthy

Our harbours and the rivers and streams that feed them are healthy and thriving natural marine environments. Our stormwater and wastewater services are reliable, well maintained and environmentally friendly, minimising downstream environmental impacts. There is minimal sediment and silt flowing into our waterways from new developments and earthworks.

From our west coast surf beaches to our gentle east coast bays, the marine environment is the jewel of Rodney. It is no small task to take care of three harbours (Mahurangi, Kaipara and Whangateau) and over 1500km of coastline. Healthy waters should be safe to swim in and it should be safe to eat the abundant fish and seafood caught here. Planting stream banks and fencing off waterways to help reduce the sediment going into our harbours has been beneficial in the past and further work is needed.

Our main focus will be on riparian (riverbank) planting and stock exclusion on a larger scale than before. By including water sensitive design and stream restoration and enhancement, we will achieve our goal to keep our waters healthy, clean and safe. This is good not only for the environment but also for the economy that depends on our marine areas – oysters from the Mahurangi River, and recreation, tourism and fishing in the Kaipara Harbour.

Partnering directly with land owners and the community is key to delivering this vision. We can focus on public land but will need the support of community groups, volunteers, private landowners and businesses to make a real difference.

Some volunteer groups already have sediment and erosion control programmes and these are a great example of what the community can achieve. By dedicating our efforts and supporting and educating landowners to make better, more sustainable environmental choices, we can create more success stories and see positive flow-on effects for our communities.

We will also continue to support our volunteers who work tirelessly removing weeds and pests in our parks and reserves to protect and restore Rodney’s natural environment. We will advocate for more to be done to minimise any negative impacts on our environment from growth-related activities, such as runoff from new developments or clean and managed fills, including advocating for the greater enforcement of resource consent conditions.

Many of our rural townships have wastewater and stormwater infrastructure that needs considerable improvement to cope with continuing growth. Solutions must be right for the area. Improving the capacity and maintenance of Rodney’s infrastructure in our unserved rural areas, such as the swales and open drains, is a priority for both community and environmental health.



The Mahurangi River footpath with the Jane Gifford in the background.

Our commitment

We are committed to carrying out the following key initiatives to achieve these goals, and will continue to look for other opportunities as they arise.

Outcome: Our harbours, waterways and environment are cared for, protected and healthy

Objective	Key initiatives
Our coastline and unique environment is well managed and thrives.	<p>Provide funding and support for community efforts to improve our environment, such as community-led volunteer initiatives focussed on pest-free areas, streamside restoration, weeding and planting.</p> <p>Advocate to the Governing Body for Coastal Compartment Management Plans to be prepared for the ongoing management of our coastline and provide support for delivering these plans.</p>
The water quality of our harbours and waterways is understood and improving.	<p>Promote riparian planting workshops and education and environmental planting networks within our communities.</p> <p>Promote and support efforts to improve the water quality in our harbours and waterways such as by working with community, landowners, farmers and iwi to implement riparian fencing and planting.</p> <p>Work with landowners, businesses and key stakeholders to promote sustainable and environmentally-friendly work practices.</p>
Stormwater and wastewater are well managed.	<p>Advocate to the Governing Body for improvements to the capacity and maintenance of stormwater infrastructure in our unserved rural areas to support growth and address negative environmental impacts.</p> <p>Advocate to Watercare for adequate water supply and wastewater infrastructure in Wellsford and the north of Rodney to accommodate growth and address negative environmental impacts.</p>

WHAT YOU TOLD US

- “Anything to improve waterways is good.” – Kaukapakapa resident
- “All landholders with riparian access should ensure riparian areas are fenced to eliminate stock.” – Anon
- “Many streams are very low quality. Streams such as through Kōwhai Park and Duck Creek show that good water quality is achievable.” – Warkworth resident
- “This is vital for the long-term health and viability of our environment. It has huge flow on effects for business, tourism, generations to come, etc.” – Anon

Whakaotinga: Ko
ngā mahi toi me ngā
tikanga ā-iwi e hihiri
e mārohirohi tonu

Outcome: Arts and culture is vibrant and strong

Local facilities are the heart of our communities. They are well used and cared for by communities that manage them. The diverse range of activities run by our communities creates a rich and accessible arts and culture scene.

Rodney residents are rightly proud of their arts and culture and their community spaces. Our numerous halls, five libraries, four volunteer libraries and two arts centres are well loved. They enable important social interaction in widely dispersed communities, the exchange of ideas and knowledge, and artistic and cultural pursuits.

We will continue to support these facilities, the dedicated locals who run them, and the people and groups that use them and make them special. They help foster the vibrant cultural base that showcases what it means to live in Rodney.



Anzac Day 2017
parade in Warkworth.

Rural halls have long been the centre of local life. We want to support more communities to develop the skills and capacity needed to manage their hall’s day-to-day operation, from setting fees realistic for the area, to being responsible for cleaning and basic upkeep. When communities have control of their hall, it reinforces a sense of pride and ownership and lets communities determine what’s best for them.

Communities don’t expect to have new buildings to cater for every group but sometimes groups can struggle to find a home while some facilities sit empty several days a week. We need to work more efficiently and improve the use of current facilities. This will help ensure that groups and their community assets are more self-sufficient.

We will work with communities to turn single-purpose spaces into multi-purpose community hubs that are well used and supported and can cater for more diverse groups.

The best way to keep our arts and culture vibrant and strong is encouraging groups to control their own cultural assets and empowering them to deliver the grassroots artistic and cultural activities that make Rodney what it is.

WHAT YOU TOLD US

- “The arts need more support. They are valuable to the whole community and I enjoy dropping into both these centres as there is always something to admire.” – Anon
- “Rodney communities have many talented artists and local talent, we want to see investment in arts and cultural activities and places continued for the area.” – Waimauku resident
- “The Helensville Art Centre has provided my family with a place to display our art and to be involved in movie making and other workshops which has connected us with our community.” – Helensville resident
- “I want our halls/community buildings cared for and upgraded with basic amenities like sewage/water from town supply.” – Kumeū-Huapai resident

Our commitment

We are committed to carrying out the following key initiatives to achieve these goals, and will continue to look for other opportunities as they arise.

Outcome: Arts and culture is vibrant and strong

Objective	Key initiatives
Our community spaces are well used by a wide range of people and groups.	<p>Provide funding and other non-financial support for communities to develop their local spaces into multi-use community spaces or hubs.</p> <p>Support communities to identify more efficient ways of using our facilities, such as bringing groups together and working with collectives, so one facility can serve many groups.</p>
Communities take the lead in managing our local halls, arts centres and volunteer libraries.	Support communities to develop the skills and capacity needed to run their local halls, arts centres and volunteer libraries sustainably.
Arts and culture is part of community life.	Support arts and culture in Rodney such as by providing grants for our arts centres in Helensville and Kumeū and supporting community-run events.



Coatesville Settlers Hall is the first hall in Rodney to be managed and operated by the local community. Left to right: Phil Smith, Chairman Alan Curtis, Leanne Holder and Mary Logan.

Te whakatutuki i tā mātou mahere

Carrying out our plan

To deliver against the outcomes of our plan we will:

- prioritise our budget to focus on the initiatives in the plan
- make the best use of our assets such as our community centres and parks
- set direction for council staff who are responsible for delivering our annual work programmes
- work with others, including community organisations and partners, to deliver projects and services
- represent your views on matters of local importance.

In some instances, our role is limited to representing your views on matters of local importance because we do not have the decision-making authority and/or funding to carry it out. When this is the case, we will use our time and energy to influence the relevant decision-maker. We do this by advocating on your behalf or making formal submissions, as well as ensuring decision-makers are aware of your views and our support for them.

Funding information can be found on page 36.

Empowering communities

We seek to empower and enable our communities. This means listening to what you want to achieve, directing council resources towards community aspirations and supporting diverse communities to have an input into the things they care about and which matter uniquely to them.

We will prioritise activities that are led by the community. We encourage and support people from all walks of life to actively participate in their community and use their diverse talents, insights and contributions to deliver community-led outcomes. We will work with others to enable our communities to achieve their goals.

Working with Māori

Delivering on Auckland Council's commitment to Māori at a local level is a priority for local boards. The council is committed to meeting its responsibilities under Te Tiriti o Waitangi / the Treaty of Waitangi and its broader statutory obligations to Māori.

As part of this commitment, the Rodney Local Board:

- held hui with local iwi on the concepts discussed in this plan
- made a new relationship agreement with Te Uri o Hau as a successor to the memorandum of understanding signed by the former Rodney District Council and will continue to work with Te Uri o Hau to nurture our relationship
- is committed to developing further relationship agreements with iwi
- works with mana whenua on naming new roads, parks and council-owned facilities like Te Whare Pukapuka o Wakapirau He Tohu Whakamaharaanga Ki Ngā Pakanga / the Wellsford War Memorial Library
- supports iwi aspirations to carry out environmental enhancement in Rodney such as around the Tōmarata Lakes area and assisting with our riparian planting initiatives
- supported iwi and the NorthWest District Business Improvement District's plans for developing tourism in the Kumeū-Huapai area
- serve with Ngāti Whātua on the Kaipara Harbour Joint Political Committee, a co-governance body set up to help deliver outcomes in the Kaipara Moana Framework Agreement signed between the Crown and Ngāti Whātua in 2014.

Projects and initiatives of particular interest to iwi have been woven throughout this plan. Rodney Local Board looks forward to the ongoing partnership with iwi in Rodney (Ngāti Manuhiri, Te Uri o Hau, Ngā Maunga Whakahī o Kaipara and Ngāti Wai) and further opportunities to engage rangatira ki te rangatira (chief to chief) to share information and work together.

He kōrero pūtea tahua

Funding information

The purpose of this section is to provide information on local board funding.

How local boards are funded

Funding is allocated to local boards through the council's budget setting process. This involves the Governing Body adopting a 10-year Budget (Long-term Plan) every three years and an annual budget every year. Local board agreements, briefly described on page 11, make up part of the annual budget.

A financial overview for the Rodney Local Board for the 2017/2018 financial year is included in Appendix 1 on page 38.

The council's budget setting process involves allocating funding gathered through revenue sources such as rates and user charges. It also involves setting levels of service for council activities and corresponding performance targets.

Details on levels of service for local activities are included in Appendix 2 on page 40.

Auckland Council's 2018-2028 10-year Budget

In June 2018 the Governing Body will adopt the 2018-2028 10-year Budget informed by local board plans. The 10-year Budget will need to consider all funding needs for Auckland and balance these with the need to keep rates and other council charges affordable. This balancing act may impact local boards' ability to carry out all the key initiatives in their local board plans.

Auckland Transport's Local Board Transport Capital Fund

Local boards can also access funding from Auckland Transport's Local Board Transport Capital Fund, which is allocated to deliver small transport related projects.

The fund allocated to the Rodney Local Board for the 2017/2018 financial year is \$399,986.

How local boards spend their budget

Much of the budget available to local boards is required to keep our services going and maintain our local assets including parks, community centres, libraries and halls.

Local boards also have additional, discretionary funding that they can spend on local projects or programmes that are important to their communities.

More information concerning local board budgets can be found in Auckland Council's Local Board Funding Policy available on the council website, aucklandcouncil.govt.nz.

The council is currently looking at ways to provide local boards with more flexibility over their budgets.

Āpitihanga 1: Tirohanga take pūtea whānui

Appendix 1: Financial overview

Income, expenditure and capital investment by local activities for Rodney Local Board for the period 1 July 2017 to 30 June 2018.

Annual Plan Financials	2017/18 (\$000s)
Operating revenue	
Local community services	237
Local parks, sport and recreation	-
Local planning and development	-
Local environmental management	-
Total operating revenue	237
Operating expenditure	
Local community services	3,464
Local governance	1,113
Local parks, sport and recreation	6,635
Local planning and development	280
Local environmental management	362
Total operating expenditure	11,854
Net operating expenditure	11,617
Capital expenditure	
Local community services	417
Local governance	-
Local parks, sport and recreation	5,962
Local planning and development	-
Local environmental management	-
Total capital expenditure	6,379



Wainui School students cycling along their track.

Āpitihianga 2: Kaupapa ā-rohe me ngā paerewa ā-mahi

Appendix 2: Local activities and levels of service

Local board responsibilities, provided for directly in legislation or allocated to boards, are summarised into local activities. These are described in the table on page 41 along with levels of service statements.

More information regarding levels of services, including performance measures and performance targets, can be found in the Rodney Local Board Agreement 2017/2018. This is available on the council website, aucklandcouncil.govt.nz.



Whangateau Hall is one of 23 council-owned halls in Rodney available for regular use or hire.

Local activities	Levels of service statements
Local parks, sport and recreation This group of activities covers the management and provision of local parks and open space and recreation activities for both passive and active recreation.	Provide a range of recreational opportunities catering for community needs on local parks, reserves and beaches. Provide sports fields that are fit for purpose and cater for community needs.
Local community services This group of activities contribute to improved community outcomes by providing places and spaces for community to learn and recreate and by integrating arts and culture into the everyday lives of Aucklanders. Key activities include locally delivered Libraries and Information (Libraries) and Arts, Community and Event services.	Provide safe, accessible, welcoming library facilities that support the delivery of quality learning programmes and services relevant to local communities. Enable Aucklanders and communities to express themselves and improve their wellbeing through customer centric advice, funding, facilitation and permitting. Deliver a variety of events, programmes and projects that improve safety, connect Aucklanders and engage them in their city and communities.
Local planning and development This group of activities covers local business area planning, local street environment and town centres and local environment and heritage protection.	Develop local business precincts and town centres as great places to do business.
Local environmental management Local environmental management activities work in partnership with locally based communities and iwi to deliver enhanced environmental outcomes (with a focus in indigenous biodiversity, healthy waterways and sustainable living) that contribute to Māori, community wellbeing and economy.	Provide leadership and support to protect and conserve the region's natural environment, historic heritage and Māori cultural heritage.
Local governance Activities in this group support our 21 local boards to engage with and represent their communities, and make decisions on local activities. This support includes providing strategic advice, leadership of the preparation of local board plans, support in developing the local board agreements, community engagement including relationships with mana whenua and Māori communities, and democracy and administrative support.	The measures for this group of activities are covered under the Regional Governance group of activities in the Long-term Plan 2015-2025 where the survey measures determine participation with Auckland Council decision-making in general. This includes local decision-making. There are no significant changes to the measures or targets for 2017/2018.

Ngā mema o tō
Poari ā-Rohe o Rodney
**Your Rodney
Local Board members**



Beth Houlbrooke – Chairperson
Phone: 021 839 413
beth.houlbrooke@aucklandcouncil.govt.nz



Phelan Pirrie – Deputy Chairperson
Phone: 021 837 167
phelan.pirrie@aucklandcouncil.govt.nz



Brent Bailey
Phone: 021 730 892
brent.bailey@aucklandcouncil.govt.nz



Tessa Berger
Phone: 021 518 470
tessa.berger@aucklandcouncil.govt.nz



Cameron Brewer
Phone: 021 828 016
cameron.brewer@aucklandcouncil.govt.nz



Louise Johnston
Phone: 021 729 739
louise.johnston@aucklandcouncil.govt.nz



Allison Roe
Phone: 021 608 888
allison.roe@aucklandcouncil.govt.nz



Colin Smith
Phone: 021 731 051
colin.smith@aucklandcouncil.govt.nz



Brenda Steele
Phone: 021 283 5835
brenda.steele@aucklandcouncil.govt.nz



South Head, Kaipara Harbour.



Auckland Council disclaims any liability whatsoever in connection with any action taken in reliance of this document for any error, deficiency, flaw or omission contained in it.

18-PRO-0651
ISSN 2253-1149 (Print)
ISSN 2230-6773 (PDF)