

Te mahere ā-rohe o Howick 2023

Howick Local Board Plan 2023





Tēnā kia hōea e au taku waka mā ngā tai mihi o ata
e uru ake ai au mā te awa o Tāmaki
ki te ūnga o Tainui waka i Ōtāhuhu.
I reira ka toia aku mihi ki te uru ki te Pūkaki-Tapu-a-
Poutūkeka,
i reira ko te Pā i Māngere.
E hoe aku mihi mā te Mānukanuka a Hoturoa
ki te kūrae o te Kūiti o Āwhitu.
I kona ka rere taku haere mā te ākau ki te puaha o Waikato,
te awa tukukiri o ngā tūpuna, Waikato Taniwharau, he piko he
taniwha.
Ka hīkoi anō aku mihi mā te taha whakararo
mā Maoro ki Waiuku ki Mātukureira
kei kona ko ngā Pā o Tahuna me Reretewhioi.
Ka aro whakarunga au kia tau atu ki Pukekohe.
Ka tahuri te haere a taku reo ki te ao o te tonga e whāriki atu rā
mā runga i ngā hiwi,
kia taka atu au ki Te Paina, ki te Pou o Mangatāwhiri.
Mātika tonu aku mihi ki a koe Kaiaua
te whākana atu rā ō whatu mā Tikapa Moana ki te maunga
tapu o Moehau.
Ka kauhoetia e aku kōrero te moana ki Maraetai
kia hoki ake au ki uta ki Ōhūiarangi, heteri mō Pakuranga.
I reira ka hoki whakaroto ake anō au i te awa o Tāmaki
ma te taha whakarunga ki te Puke o Taramainuku, kei kona ko
Ōtara.
Katahi au ka toro atu ki te Manurewa a Tamapohore,
kia whakatau aku mihi mutunga ki runga o Pukekiwiriki

Let this vessel that carries my greetings
travel by way of the Tāmaki River
to the landing place of Tainui canoe at Ōtāhuhu.
There, let my salutations be borne across the isthmus to the
Pūkaki lagoon
and the community of Māngere.
Paddling the Manukau Harbour
we follow the Āwhitu Peninsula to the headland.
From there we fly down the coast to the Waikato river mouth,
sacred waters of our forebears.
Coming ashore on the Northern side
at Maoro we head inland to Waiuku and Mātukureira,
there too is the Pā at Tahuna and Reretewhioi.
Heading southward I come to Pukekohe.
My words turn to follow the ancient ridgelines along the
southern boundary,
dropping down into Mercer and Te Pou o Mangatāwhiri.
My greetings reach you at Kaiaua
who gaze across Tikapa Moana to the sacred mountain,
Moehau.
Taking to the sea, my remarks travel to Maraetai
and then to Ōhūiarangi, sentinel to Pakuranga.
There we follow again the Tāmaki River
to Te Puke o Taramainuku, Ōtara resides there.
From here I reach for Manurewa
until my greetings come to rest on Pukekiwiriki
below lies Papakura and there I rest.

Ngā upoko kōrero

Contents

Mihi	1
Contents.....	2
From the Chair.....	3
He kōrero mai i te Heamana	4
Our plan at a glance	5
He aronga poto ki tā mātou mahere	6
About local boards	7
Developing our plan	8
Carrying out our plan.....	8
Howick Local Board area	9
Māori Outcomes	10
Ngā huanga Māori.....	13
Climate Action.....	16
Our People.....	18
Our Environment	22
Our Community	26
Our Places	29
Our Economy.....	32
Funding information	35
Local activities and levels of service	36
Financial overview	38
Your Howick Local Board members	39





He kōrero mai i te Heamana

From the Chair

We're proud to present the Howick Local Board Plan 2023.

This document is the result of thousands of conversations with locals, together with strategic context and expert advice to create a plan that is both aspirational and practical. We will use this as the basis for our work programmes and annual budgets – turning this strategy into action.



You'll recognise some of these initiatives from our previous plans as we continue these projects and build on their success. There are also initiatives that respond to new and emerging challenges and opportunities.

Over the past few decades, our population has grown but many of our community assets have not kept pace and are struggling to cope – the most urgent need is the Flat Bush Community Centre and Library. We must take a more strategic approach to the management of our assets over the long term to meet future needs. We need to consider how we maximise the benefits of our existing assets to unlock new opportunities and address inequity.

Some of this will require us to be brave and make difficult decisions – we will rise to the challenge to deliver the best outcomes for our communities. Before, during and after these decisions we will communicate in an open and transparent manner, allowing time for constructive feedback. We remain committed to lifting our engagement and visibility, creating more opportunities to meet and discuss the issues that matter to you.

Local Boards have recently been granted greater decision-making powers, including more control over our budgets. This should mean greater visibility, accountability, and responsiveness. However, we must also recognise that our annual budgets have reduced significantly in recent years so we will embrace the challenge of doing more with less by using innovative and creative approaches. Instead of trying to do everything ourselves, we will look more for partnerships and local procurement. We know that businesses and community organisations are facing similar challenges with rising costs and high inflation, and we're determined to help them achieve greater financial sustainability to empower them.

While the future always brings uncertainty, we know that there will be challenges and opportunities. By working together, with our community and other partners, we know we can achieve our common goals. 'Ehara taku toa i te toa takitahi, engari he toa takitini' – our strength is not made from us alone but made from many.

Damian Light

Chairperson, Howick Local Board

He kōrero mai i te Heamana

E whakahīhī ana mātou ki te whakaatu atu i te Mahere a te Poari ā-Rohe o Howick 2023.

He otinga tēnei tuhinga nō te mahi a te whakawhiti kōrero ki ngā tāngata o te rohe nei, ā, ka haere tahi tēnei me te horopaki ā-rautaki me te tohutohu ā-mātanga, ka hua mai ai tētahi mahere e whai manako ana, e whai tikanga ana hoki. Ka whakamahia tēnei e mātou hei tūāpapa mō ā mātou hōtaka mahi me ngā tahua ā-tau - ka whakaarangia atu ai te rautaki nei kia kōkiri.

Ka āhukahukatia e koutou ētahi o ngā kaupapa nei nō ā mātou mahere o mua, i a mātou e whakatinana tonu ana i ēnei kaupapa, ka kōkiri kaupapa atu anō ai i runga i te angitu o aua kaupapa rā. Arā hoki ētahi kaupapa e noho ana hei urupare ki ngā wero me ngā ara wātea e hou ana, e puta mai ana hoki.

Putā noa i ngā tekau tau tata kua taha ake nei, kua tipu tō tātou taupori engari kāore te maha o ngā huarawa ā-hapori i te hāngai ki taua tipuranga, me te aha e karawheta nui ana - ko te take nui katoa me hohoro tonu te whakatutuki, ko te Pūtahi ā-Hapori me te Whare Pukapuka o Flat Bush. Me nui ake te whai rautaki o tā mātou ara whakatutuki i te whakahaeretanga o ngā huarawa i te roanga o ngā tau maha e tutuki tonu ai i a mātou ngā hiahia matua o te anamata. Me whai whakaaro hoki mātou ki te āhua o tā mātou whakarahi ake i ngā huanga e puta mai ana i ngā huarawa kei a tātou kē, e takoto mai ai he ara wātea hou, e whai rongoā ai hoki ki ngā take manarite-kore.

Nā runga i ētahi o ngā āhuatanga nei, kua mate mātou ki te tū māia, ki te whakatau hoki i ētahi whiriwhiringa e uaua ana - ka hīkina e mātou te mānuka kia hua mai ai ngā putanga papai katoa ki ō tātou hapori. I mua, i muri, i te wā hoki o te whakataunga o aua whiriwhiringa, ka tuwhera, ka pūataata hoki te whakawhitinga kōrero e whai wā motuhake ai te whakahokinga whaihua. E ngākau titikaha tonu ana mātou ki te whakakaha ake i tā mātou whakapāpātanga me tō mātou kanohi kitea kia whai ara wātea anō ai tātou ki te hui tahi, ki te matapaki tahi i ngā take e kaingākauria ana e koe.

Nō nā tata nei whakamanahia ai ngā Poari ā-Rohe ki ētahi anō mana whakatau, tae atu ki te nui ake o te mana whakahaere i ā mātou tahua. I tona tikanga, mā tēnei e piki ake ai te kitea, te papanga me te aronuitanga hoki. Heoi, me maumahara hoki tātou kua kaha te timu o te tai tahua i ngā tau tata nei, nō reira ka hāpai ake mātou i te mānuka o te whakatutuki i ngā mahi nui ake i te iti ake o te rawa mā te takahi i ngā ara auaha. E kore ai mātou e mate ki te hāpai i ngā mahi katoa me tō mātou kotahi, ka kimi atu mātou i ētahi anō rangapū mahitahi, ka nui ake hoki te whai i te kaitaonga ā-rohe. E mōhio ana mātou e hanga rite ana te pāngia o ngā umanga me ngā whakahaere ā-hapori e ngā pikinga utu me te pikiutu tukipū, ā, e pūkeke ana mātou ki te āwhina atu i te hunga nei kia kaha ake te toitūtanga ahumoni, hei whakamana ake i a rātou.

Ahako te taurangi ka tōia mai nei e te anamata, kei te mōhio mātou ki te takoto o ngā wero me ngā ara wātea ki mua. Kei te mōhio hoki mātou mā te mahi ngātahi ki tō tātou hapori me ō mātou hoa pātui e tutuki ai ngā whāinga e tūmanakotia ngātahitia ana.

Ehara taku toa i te toa takitahi, engari he toa takitini.

Damian Light

Kaihautū, Te Poari ā-Rohe o Howick





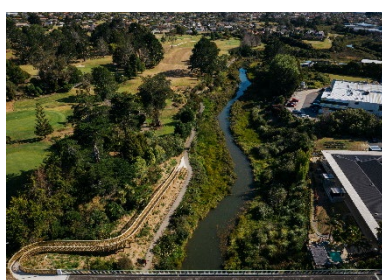
He aronga poto i tā mātou mahere

Our plan at a glance



Our People

Supporting people in our diverse communities to be strong, resilient, inclusive and healthy, and who actively participate to make our area a wonderful, safe place to live, work and play.



Our Environment

Protecting our natural environment to ensure the world we pass on to future generations has been well looked after and nourished.



Our Community

Supporting community participation with our services and facilities and maintain them in such a way as to efficiently provide maximum benefit for our area.



Our Places

Supporting our growth, development and transport by promoting vibrant town centres, better, more accessible public transport and greater connectivity with schools, key community facilities and transport hubs.



Our Economy

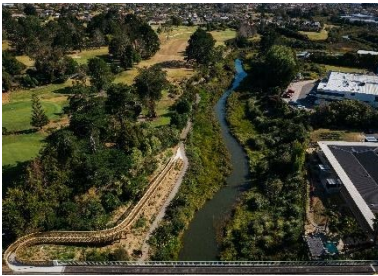
Supporting our economic recovery by promoting local businesses, Business Improvement Districts, facilitating local youth employment and increasing tourism opportunities and visitor numbers.

He aronga poto ki tā mātou mahere



Ō tātou tāngata

Te tautoko i ngā tāngata i ō tātou hapori kanorau kia kaha ai, kia manawaroa, kia kauawhi, kia hauora, ā, kia hāpai ake i te wāhi ki tēnā me tēnā e rawe ai, e haumarua ai hoki tō tātou nei rohe hei wāhi noho, hei wāhi mahi, hei wāhi tākaro hoki.



Tō tātou taiao

Te tiaki i tō tātou taiao kia whakaūngia ake te nui o te tiakanga me te morimoringa o te ao e tukuna iho ana ki ngā reanga e ara tonu mai ana.



Tō tātou hapori

Te tautoko i te whai wāhitanga mai a te hapori ki ā tātou ratonga me ō tātou hanga whaitake, ā, ka eke te tautiaki o ēnei ki tōna taumata e puta ai te nui o ngā painga e taea ana ki tō tātou rohe.



Ō tātou wāhi

Te tautoko i tō tātou tipuranga, i te whanaketanga me te tūnuku mā te whakatairanga i ngā pokapū tāone e ngangahau ana, i te tūnuku tūmatanui e pai ake ana, e tomopai ake ana, e kaha ake ai hoki te tūhonohono ki ngā kura, ki ngā hanga whaitake matua o te hapori me ngā pokapū tūnuku.



Tā tātou ōhanga

E tautoko ana i tā tātou haumanutanga ā-ōhanga mā te whakatairanga i ngā pakihi ā-rohe me ngā Rohe Whakapiki Pakihi e whiwhi mahi ai ngā rangatahi o te rohe, e maha ake ai hoki te nama o ngā ara wātea ā-tāpoi me ngā manuhiri ka tatū mai.



He kōrero mō ngā poari ā-rohe

About local boards

Auckland Council has a unique model of local government in New Zealand, made up of the Governing Body (the mayor and 20 Governing Body members) and 21 local boards. The Governing Body focuses on Auckland-wide issues while local boards are responsible for decision-making on local matters, activities and services and for providing input into regional strategies, policies and plans.

We make decisions on local matters such as:

- supporting local arts, culture, events and sport and recreation
- supporting local organisations to deliver community services
- maintaining and upgrading town centres and facilities including parks, libraries and halls
- caring for the environment and preserving heritage.

Local boards also have a role in representing the view of their communities on issues of local importance.

Higher inflation and the cost of borrowing money has pushed up the cost of providing these services. We will need to address these challenges in the local board plan, which means doing things differently and prioritising where we spend.

About local board plans

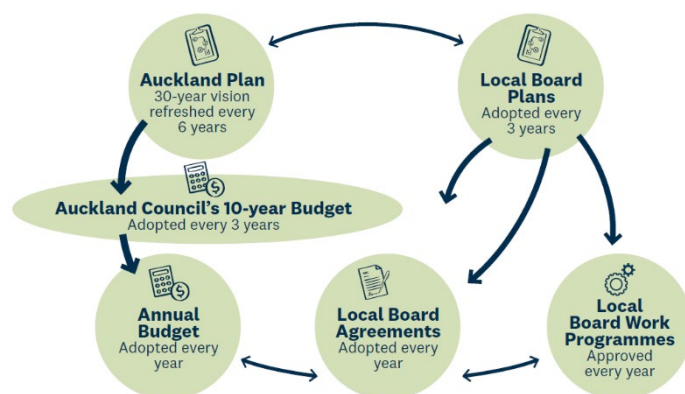
Local board plans are strategic three-year plans developed in consultation with the community. They set out the direction for the local area reflecting community aspirations and priorities, and guide:

- decisions on local activities, projects, and facilities
- local board input into the council's regional strategies and plans, including the Auckland Plan
- how local boards will work with other agencies, including community groups, central government agencies and council-controlled organisations that play key roles in the area
- funding and investment decisions.

Local board plans are inclusive and connected; they don't operate in isolation. They support:

- the Auckland Plan 2050 – the 30-year vision for Auckland
- the council's 10-year budget – planned spending and future investment priorities over the longer term
- the council's annual budget – funding for the coming financial year of the 10-year budget.

Each local board adopts an agreement that sets local budgets, levels of service, performance measures and targets for each financial year. Details of projects, budgets and timelines are outlined in annual work programmes. Progress is reported quarterly and communicated to our communities.



Te whakawhanake i tā mātou mahere

Developing our plan

Our draft plan was developed with careful consideration of previous community feedback on the 2020 local board plan, feedback through annual budget consultations and other pieces of feedback such as results from the Peoples Panel Surveys.

During July and August 2023, we consulted on the draft plan to hear your thoughts on how the plan reflected your needs and aspirations over the next three years, seek your feedback on which objectives were most important to you and to find out how we could better meet our Māori Outcome and climate action aspirations.

We engaged with our communities across the local board area. The issues and priorities you raised with us through these interactions have helped us finalise this plan.



Te whakatutuki i tā mātou mahere

Carrying out our plan

Turning plans into reality takes many people working together – the community, the local board and the wider council family such as Auckland Transport. To deliver on the local board plan, we will:

- prioritise budgets to focus on the initiatives in the plan
- make the best use of local assets such as community centres, libraries and parks
- set direction for the council staff who deliver the projects and services
- work with various community groups and partners, to deliver projects and services.
- make decisions that are in line with Auckland's commitment to climate action and emissions reduction.

Where important projects in local areas are beyond available funding or decision making, our role is to advocate to other decision-makers to ensure they are aware of community views and the local board's support for them.



Te Rohe ā-Poari o Howick

Howick Local Board area





Māori artwork at the Te Tahawai Marae Komiti

Ngā huanga Māori

Māori Outcomes

Māori identity and culture are Auckland's unique point of difference in the world. Whānau, hapū, iwi and Māori communities aspire to have healthy and prosperous lives and have defined the outcomes that are most important to Māori. Māori outcomes are the way Auckland Council supports Māori aspirations.

Māori outcomes respond to Council's legislative obligations and to extensive engagement with Auckland's Māori communities.

The Kia Ora Tāmaki Makaurau framework outlines ten priority areas that support and progress these aspirations and has been adopted by Council as the way to deliver outcomes for Māori. These priority areas are:

Kia ora te kāinga – Papakāinga and Māori housing
Kia ora te marae – Marae development
Kia ora te ahurea – Māori identity and culture
Kia ora te rangatahi – Realising rangatahi potential
Kia ora te hononga – Effective Māori participation

Kia ora te whanau – Whānau and tamariki wellbeing
Kia ora te reo – Te reo Māori
Kia ora te umanga – Māori business, tourism and employment
Kia ora te taiao – Kaitiakitanga
Kia hāngai te Kaunihera – An empowered organisation



Local board plans are an important way to deliver for Māori at a local level. This section of the plan outlines the Māori outcomes addressed in this plan.

Howick Local Board has two marae, Te Tahawai and Owairoa marae. Te Tuhi, which is an arts centre is also located in the local board area. Both maraes and Te Tuhi all have a rich Māori identity, culture and heritage.

Te Tahawai Marae

Te Tahawai Marae is a pan-tribal urban marae located in Pakuranga. People of all cultures visit the marae where they learn about Māori culture and customs. They can enjoy a unique Māori experience that is welcoming and supportive of them as they enter the Māori world and develop an understanding of Māori way of life (tikanga).

Owairoa Marae

Owairoa Marae is located in Howick, and offers cultural and history experiences for all kinds of groups, as well as school programmes. The facilities include a museum which contains a collection of taonga (historical treasures), some of which are more than 100 years old.

Te Tuhi

Te Tuhi offers programmes and workshops, and work on projects like the Matariki wānanga and Aroha Art project.

Howick Local Board is supportive of working together with both maraes, and Te Tuhi, in enhancing Māori outcomes such as identity and culture, as well as other priority areas that are important to them.

Iwi and hapu

The following iwi and hapū have indicated that they an interest in the local board area:

- Waiohua-Tāmaki – Ngāi Tai Ki Tāmaki, Te Kawerau ā Maki, Ngāti Tamaoho, Te Ākitai Waiohua,
- Ngāti Te Ata Waiohua.
- Marutūahu – Ngāti Paoa, Ngaati Whanaunga, Ngāti Maru, Ngāti Tamaterā, Te Patukirikiri.
- Ngāti Whātua – Ngāti Whātua Ōrākei.

Māori residents: 2018 census

This data covers those who identified as Māori on their census form.

- 8,025 Māori residents – about 6% of the total Howick population (140,970, the most populous local board in Tāmaki Makaurau)
- Howick has grown by 1,815 Māori residents from 6,237 in 2013
- Māori are much younger, with a median age of 24. 3 years compared to 37.3 years for the whole of Howick

We recognize the importance of having strong, sustainable relationships with mana whenua, and we are committed to strengthening our relationship with Ngāi Tai Ki Tāmaki, as we acknowledge them as the pre-eminent mana whenua of our rohe.

We are also committed to developing meaningful relationships with mana whenua who have a particular interest in our local board area, as we recognize them as our treaty partners. A key priority for us as a local board is the Kia Ora Tāmaki Makaurau framework, in particular, Kia Ora Te Hononga.

We welcome opportunities to work with all Māori in enhancing Māori identity and culture, realizing the great potential our rangatahi have, and supporting the hauora of whanau and tamariki.

The Howick Local Board is committed to the following, woven through our local board plan:

- Incorporating Māori culture, language, art and stories into the design of public spaces.
- Strengthening relationships with Ngāi Tai ki Tāmaki to identify joint aspirations and acknowledge them as kaitiaki of our area
- Support the Tūpuna Maunga Authority to protect and enhance Ōhūiarangi / Pigeon Mountain
- Supporting Ngāi Tai Ki Tāmaki in its management of Te Naupata / Musick Point via the local board's work programme





He toi Māori i Te Tahawai Marae Komiti

Ngā huanga Māori

Ko te tuakiri me te ahurea o Tāmaki Makaurau te take e motuhake nei ia i te ao. E tūmanako ana ngā whānau, ngā hapū, ngā iwi me ngā hāpori Māori kia hauora, kia houkura ō rātou ao, ā, ko rātou tonu kua whakatau i ngā huanga e mātāmua katoa ana ki a rātou. Ko ngā huanga Māori te ara mā reira e tautoko ai a Te Kaunihera o Tāmaki Makaurau i ngā tūmanako o te Māori.

Urupare ai ngā huanga Māori ki ngā here ā-ture o runga i a Te Kaunihera o Tāmaki Makaurau, ki te whānui hoki o te pāhekohekotanga ki ngā hāpori Māori o Tāmaki Makaurau.

E takoto ana i te anga o Kia Ora Tāmaki Makaurau ngā wāhi mātāmua tekau e tautoko ana, e kōkiri ana hoki i ēnei tūmanako, ā, kua whāia e te kaunihera hei huarahi whakaputa i ngā huanga ki te Māori. Ko ēnei take mātāmua ko te:

Kia ora te kāinga – He papakāinga, he whare mō te Māori

Kia ora te marae – Te whakawhanaketanga o te marae

Kia ora te ahurea – Te tuakiri me te ahurea Māori

Kia ora te rangatahi – Te puāwaitanga o te pitomata rangatahi

Kia ora te hononga – Te whai take o te whai wāhi a te Māori

Kia ora te whanau – Te oranga o te whānau me ngā tamariki

Kia ora te reo – Te reo Māori

Kia ora te umanga – Te pakihi, te tāpoi me te whai mahi a te Māori

Kia ora te taiao – Te kaitiakitanga

Kia hāngai te Kaunihera – He whakahaere kua whakamanatia

He ara whakahirahira ngā mahere a ngā poari ā-rohe e tukuna ai he huanga ki ngā Māori o te rohe. Kei tēnei wāhanga o te mahere ngā kōrero mō ngā huanga Māori e aro nuitia ana i tēnei mahere.



E rua ngā marae kei te takiwa o te Poari ā-Rohe o Howick. Ko Te Tahawai me Owairoa. Kei roto i taua takiwā anō a Te Tuhi, he pūtahi toi. Māori ake nei te tuakiri, te ahurea me te tuku ihotanga o ēnei marae e rua me Te Tuhi.

Te marae o Te Tahawai

Ko te marae o Te Tahawai he marae noho tāone i Pakuranga mō ngā iwi katoa o te motu. He mea toro te marae e ngā manuhiri nō ngā ahurea katoa, ki reira rātou ako ai i ngā āhuetanga e pā ana ki te ahurea Māori me ōna tikanga. Ka āhei tā rātou noho atu ki te pārekareka o tētahi wheako Māori e ahurei ana, e rāhiri ana, e tautoko ana hoki i a rātou me tā rātou tomokanga ki te ao Māori, ki konei whakawhanake ai i tētahi māramatanga ki ngā tikanga me te āhua o te noho a te Māori.

Te marae o Owairoa

Kei Howick te marae o Owairoa, ā, e tuwhera ana ōna kūaha ki ngā momo rōpū katoa ki te whakahaere wheako e aro nui ana ki te ahurea me te hītori, tae atu hoki ki ngā hōtaka ā-kura. Kua whai wāhi atu ki te huinga hanga whitake nei ko tētahi whare pupuri taonga, kei a ia tētahi kohinga taonga, ko ētahi kua koni atu i te 100 tau te tawhito.

Te Tuhi

Ko tā Te Tuhi, he whakahaere i ngā hōtaka, i ngā awheawhe me ngā mahi e hāngai ana ki ētahi kaupapa pēnei i te wānanga o Matariki me te kaupapa o Toi Aroha..

He mea tautoko e te Poari ā-Rohe o Howick te mahi ngātahi atu ki ngā marae e rua, ki a Te Tuhi hoki, hei whakaū i ngā huanga Māori pērā i te tuakiri, te ahurea me ērā atu kaupapa e noho mātāmua ana ki a rātou.

Ngā Iwi me ngā Hapū

Kua tohua mai e ngā iwi me ngā hapū, e whai ake nei, tā rātou whai pānga ki te takiwa o te poari ā-rohe:

- Waiohua-Tāmaki – Ngāi Tai Ki Tāmaki, Te Kawerau ā Maki, Ngāti Tamaoho, Te Ākitai Waiohua,
- Ngāti Te Ata Waiohua.
- Marutūahu – Ngāti Paoa, Ngaati Whanaunga, Ngāti Maru, Ngāti Tamaterā, Te Patukirikiri.
- Ngāti Whātua – Ngāti Whātua Ōrākei.

Ngā Kainoho Māori: Tatauranga 2018

E whai wāhi ana ki ēnei raraunga te hunga i tohua mai he Māori rātou, i runga i ā rātou puka tatauranga.

- E 8,025 ngā kainoho Māori – ko tōna 6 ōrau o te taupori katoa o Howick (140,970, te poari ā-rohe nui katoa o Tāmaki Makaurau)
- Kua tipu te nama o ngā kainoho Māori mai i te 1,815 ki te 6,237 i te tau 2013
- E tino mātātahi ake ana te Māori, ko te toharite ā-tau pakeke ko te 24.3 tau, ina whakatauritea ki te 37.3 tau mō te whānuitanga atu o Howick

Kei te mōhio mātou ki te hirahira o te whai i ngā hononga e kaha ana, e toitū ana ki ngā mana whenua, ā, e ngākau titikaha ana mātou ki te whakakaha ake i tō mātou hononga ki a Ngāi Tai ki Tāmaki, nā runga i tō mātou whakapono ko rātou te mana whenua tūturu o tō tātou rohe.



E ngākau titikaha ana hoki mātou ki te whakawhanake i ngā hononga whai tikanga ki ngā mana whenua e whai pānga ana ki te takiwa o tō tātou poari ā-rohe, i te mea ko rātou ō mātou hoa tiriti. Ko tētahi take matua e mātāmua ana hei whai atu mā mātou te poari ā-rohe, ko te anga o Kia Ora Tāmaki Makaurau, otirā, ko Kia Ora Te Hononga.

E rāhiri ana mātou i ngā ara wātea ki te mahi ngātahi atu ki a ngāi Māori hei whakaū i te tuakiri me te ahurea Māori, i runga hoki i te mōhio ki te pitomata nui o ā tātou rangatahi, hei tautoko anō hoki i te hauora o te whānau me ngā tamariki.

E ngākau titikaha ana te Poari ā-Rohe o Howick ki ngā kōrero e mau nei ki raro, ēnei kua tuituia mai ki tā mātou mahere poari ā-rohe:

- Te whakauru i te ahurea Māori, i te reo, i ngā toi me ngā kōrero ki roto i te hoahoatanga o ngā wāhi tūmatanui
- Te whakakaha ake i ngā hononga ki a Ngāi Tai ki Tāmaki hei tautohu i ngā tūmanakotanga e wawatahia tahitia ana, te whakamihi hoki i a rātou hei kaitiaki mō tō tātou rohe
- Te tautoko i te Tūpuna Maunga Authority hei whakamaru, hei whakarākei hoki i a Ōhutarangi
- Te tautoko i a Ngāi Tai ki Tāmaki me tana whakahaere i a Te Naupata mā te hōtaka mahi o te poari ā-rohe



Lloyd Elsmore Park

Te Tāruke ā-Tāwhiri

Climate Action

In 2019 Auckland Council declared a climate emergency and in 2020 adopted Auckland's climate plan, Te Tāruke ā-Tāwhiri. Meeting the goals set out in this plan means taking ambitious action to reduce emissions and to adapt to a changing climate.

Local boards have an important role to play in leading and supporting Auckland's response to the climate emergency, including supporting regional climate plan initiatives, integrating climate awareness into all decisions, including community investment.

The Howick Local Board area is mostly urban (78%), and with that comes the challenges you might expect – intensified development, reliance on vehicles leading to increased traffic emissions and loss of natural environments. Only 6% of the area remains in native vegetation, primarily in bush reserves such as Point View Reserve, Murphy's Bush and Mangemangeroa Reserve. The average canopy cover is slightly above the minimum target under the Urban Ngāhere Strategy – 16% versus 15% (noting that the Strategy's overall target is 30% canopy cover across Auckland's urban area), but under the Auckland average of 18%. Because of the high level of urbanisation, our parks and open spaces, such as Lloyd Elsmore Park, Barry Curtis Park and the aforementioned bush reserves, play an important role in connecting residents with nature that enhances their health and wellbeing. Our streams and beaches **have been severely** affected by development and pollution, and our coastline is at risk of erosion, sea level rise and coastal inundation.



The Howick Local Board is committed to the following, woven throughout our local board plan:

- Development of a local, community-led climate action plan
- Supporting pest free programmes
- Working with communities to adopt and restore sensitive ecological areas, improve local water quality and clean up the environment
- Advocating for crucial infrastructure upgrades
- Implement the Howick Urban Ngahere Action Plan 2021 to increase tree canopy coverage on public land by 3%
- Future rehabilitation of the former Greenmount landfill into public open space.
- Reducing waste to landfill
- Improving public transport and increasing the walking and cycling network to encourage less reliance on private vehicles
- Implement measures to manage coastal erosion and mitigate effects of storm surge and sea level rise.
- Advocate for development of a shoreline adaptation plan - including support for funding and implementation



Celebrating Cultures at Barry Curtis Park

Ō Tātou Tāngata

Our People

The Howick Local Board has the largest population by local board area in Auckland. Just over 141,000 people (Census 2018) live in the area, and this is predicted to increase to over 150,000 by 2025. It is also home to diverse communities which presents both a strength and a challenge in how we provide for strong, resilient, inclusive communities that support and enrich us all.

The health, wellbeing and safety of all our communities is a key focus for this local board plan and we want to commit to programmes that support an involved, connected, active and healthy community. We want to promote wellbeing and to ensure we are part of an inclusive society where everyone feels valued, respected, supported and safe. We will support community organisations to develop their capacity and attract volunteers. We want to foster community involvement in projects and services, and promote self-sufficiency.

We need to hear all the voices in our community so that people can participate in local decision making on matters that interest them. We must look to engage more with our people and take every opportunity to let you know what we are doing and how you can be part of it. However, eight percent of our residents cannot speak English, and to be truly inclusive, we must meet the challenge this presents and develop better ways to communicate so that people will be able to access, understand and respond.



Rangatahi / Youth

Young people under the age of 25 make up over 30 per cent of the population of the Howick Local Board area and it is important that they can have a voice on the issues that are important to them. We are keenly aware that decisions we make now will have influence over and will shape the future they will inherit. The Howick Youth Council was established in 2011 to “empower youth to bring about a positive influence in our community by ensuring their voices are heard in the decisions that shape our (area)”. We are enormously proud of the work the Youth Council continues to do and will continue to support its priorities to improve and promote youth participation, inclusion and empowerment.

Safety in the community

We need to feel safe as we go about our daily lives. This not only means that you feel protected from harm, but that help is available should you need it. We will continue to advocate to, and work with, Police and other agencies to design and implement safety strategies. Our recent experience with severe weather events has identified a need for a local civil defence plan and we intend to see one developed. Building community resilience can also be achieved via targeted grants funding for programmes and initiatives that promote safety, connection and well-being – with a goal of groups becoming self-funded.

Heritage, arts and culture.

We are keen to enable people to engage with local history and share their diverse cultures. We acknowledge that that the areas local heritage, Māori and European, plays a significant role in what we wish to achieve, but other cultures are increasingly coming to the fore. We will continue to support this diversity via our festivals, arts, culture, music and heritage activities and experiences – including our ongoing support of the Howick Historical Village.

Participating in arts and cultural initiatives enables Aucklanders to express our unique cultures and see ourselves reflected in public places. We will continue our support for local groups showcasing the works of local artists and staging local events. Creativity, culture and the arts make Auckland a vibrant and dynamic city.

Challenges

- Communicating with a diverse group of communities in a range of different languages.
- Bringing diverse communities, who do not always easily connect with each other, together.
- Encouraging people to volunteer in order to grow community groups.
- Engaging and representing communities with different priorities, interests and levels of understanding of council and its decision-making processes.

Opportunities

- Build the capacity of community groups so they become more self-sufficient and can partner with council to deliver a wide range of activities.
- Create more resilient communities with good emergency planning and partnership with other agencies.
- Share the stories and foster a greater understanding of mana whenua and pre-European history of our area.

- Support opportunities to bring people together to celebrate and experience our rich cultural diversity and showcase the work of local artists.

Our Plan

What we want to achieve (Objectives)	What we will deliver in the next 3 years (Key Initiatives)	What success looks like (Measure of Success)
People actively contribute to their community	Support community groups to become more sustainable by promoting volunteering and efficiency to help build capacity to successfully serve their communities	More groups become self-sufficient
	Empower community groups and organisations to co-deliver projects with Auckland Council, and to take action to protect and maintain community assets	Community groups take ownership of projects
	Support activities that bring our diverse communities together	Increase in number of activities that bring diverse groups together
Build and maintain mutually beneficial relationships with Māori	Develop and strengthen relationships with mana whenua and mataawaka, in order to increase Māori input into decision-making and support participation in local government	Regular conversations take place with groups that have strong interests in our area
	Māori culture, language, art and stories are incorporated into the design of public spaces	Work programme projects reflect Māori culture, language, art and stories where possible
	Strengthen relationships with Ngāi Tai ki Tāmaki to identify joint aspirations and priorities, and acknowledge them as kaitiaki of our area	Conversations with Ngāi Tai ki Tāmaki identify aspirations and priorities which are reflected in our work programmes
Build community resilience	Develop a local board emergency response plan	Plan developed and implemented
	Support community groups with the implementation of safety strategies throughout the area and help connect them with other agencies.	The community feels safer and better prepared
Rangatahi /Youth in Howick have a voice, are valued, and contribute	Continue to support the work of the Howick Youth Council.	The Howick Youth Council is successful on delivering their outcomes





Support local arts, culture, music and heritage activities and experiences	Support festivals to become financially self-sufficient	Festivals become less reliant on local board funding
	Fund local arts through operational grants for Uxbridge Arts Centre, local theatre and music groups	The creative arts continue to flourish in our area
	Support arts facilities to collaborate with community groups to create art experiences which showcase our ethnically diverse population and cultural heritage, and allow people to appreciate or experience culture and creativity	Participation in the creative arts is maintained or grown
	Recognise, promote and celebrate Howick's unique history through education, exploration and tourism initiatives.	Our local heritage continues to be acknowledged



Cascades Walkway and Botany Creek

Tō Tātou Taiao

Our Environment

Climate change is having an increasing impact on the environment and on our daily lives. As the current caretakers of this environment we must strive to not only maintain, but to improve what we have, so as to ensure the world we pass on to future generations has been well looked after and nourished.

We only need look at the early 2023 severe weather events to realise that the impacts of climate change are directly affecting our lives and the environment we live in, so we will continue to encourage an environmental and ecologically friendly approach to lifestyle and development at a local level to attempt to mitigate these effects. We remain committed to the council's Te Tāruke-ā-Tāwhiri: Auckland's Climate Plan, Waste Management and Minimisation Plan and Urban Ngahere (Forest) Strategy, and the need to both reduce emissions and build local resilience to respond to the changing climate.



Rotary Walkway



Mana whenua as kaitiaki of this area for many generations have a unique relationship with the natural environment. Their body of knowledge and practice can help us all to enhance our relationship with our land, marine and freshwater environments. We must all work together in the interests of those who come after us.

The land

The Howick Local Board area has been heavily modified by human activity over the last 150 years. Most of the land in our area is urbanised. However, we also have an abundance of open spaces – both formed and natural, that provide for our sense of identity and belonging. We need only look to our parks and reserves such as Lloyd Elsmore and Barry Curtis Parks, Mangemangeroa, Te Naupata / Musick Point and Ohuiarangi / Pigeon Mountain to acknowledge the vital role they play in protecting our biodiversity and the provision of habitats for many species of native flora and fauna.

We are particularly proud of our work with mana whenua and mataawaka, volunteers and schools in taking action to protect, restore and improve our natural environment through ongoing funding and partnerships, and we will continue to enable local communities to undertake such work. Support of initiatives like sustainable schools, Pest Free Howick and the ongoing work of the Friends of Mangemangeroa, contributes to ensuring our natural environment preserved for future generations.

We also remain committed to the rehabilitation of the Greenmount landfill site and whilst action is taking longer than initially anticipated, this is due to having to manage the inherent risks associated with closed landfills. We will continue to advocate for the community's aspirations to see this site transformed into public open space with native planting, cycling and walking, informal active recreation and play, and areas set aside to just sit and enjoy the landscape and view.

Around our coast

We are frequently reminded how important our local beaches are to you and of your concerns with regards to coastal erosion and the loss of sand. We continue to advocate for action on coastal management and expect that a Shoreline Adaptation Plan will soon be developed under the auspices of Te Taruke-a-Tawhiri: Auckland's Climate Plan. This will be key to identifying opportunities for solutions.

We are also highly aware of the role that the marine environment adjacent to our beaches play, and how vital it is to maintain healthy, functioning ecosystems throughout the Hauraki Gulf Marine Park. However, we must also not forget our own Tamaki Estuary and we will continue to support the Tamaki Estuary Environmental Forum to advocate for, identify and implement initiatives that will improve ecological health and water quality.

Along our streams

The quality of water in our streams and waterways directly impacts on the health of our harbour and its biodiversity. Unfortunately, many of our streams have been severely affected by development and pollution through stormwater and waste discharge. We will continue to preserve and restore the health and vitality of our waterways by mitigating pollution, restore habitats, manage invasive species, address flooding and erosion, and enhance climate change resilience projects. This will be done through supporting volunteer stream restoration and clean-up programmes through funding and advocacy – including ensuring that stream restoration projects such as the Millhouse Reserve Cascade Walkway are continued and replicated through the Howick Local Board area.

Challenges

- Continuing to manage and reduce pest plants and animals.



- Lack of waste management facilities in east Auckland
- Climate change and the effects of coastal erosion, storm surge and sea level rise on our coastline, along with the lack of regional plans to deal with these effects which are particularly evident during severe weather.
- Aging and inadequate stormwater infrastructure in older areas coupled with intensification of housing leading to overflows, flooding and beach degradation in high rainfall.

Opportunities

- Develop a local, community-led climate action plan to complement and provide local focus to council's Te Taruke-a-Tawhiri: Auckland's Climate Plan.
- Build on the wide support in the community to continue and expand environmental programmes and initiatives, and look to have more delivered by community groups.

Our Plan

What we want to achieve (Objectives)	What we will deliver in the next 3 years (Key Initiatives)	What success looks like (Measure of Success)
Protect our natural environment.	Develop a local, community-led climate action plan	Action plan developed and implemented
Empower the community to take environmental action	Continue to support the Pest Free Howick Ward pest animal and plant programme to grow and become more self-sufficient	Pest Free Howick Ward project continues to grow and is enabled to access other financial sources
	Support and connect local environmental groups to share resources and promote greater collaboration	Increased collaboration between local environmental groups
	Work with local communities and schools to deliver projects that restore sensitive ecological areas, improve local water quality, reduce pests, clean up our environment, and allow people to connect with nature	Increased participation of community groups and schools
Protect and enhance our unique coastline	Implement sustainable measures to manage coastal erosion and inundation, including mitigating loss of sand from local beaches	Measures are implemented to mitigate coastal erosion, inundation and loss of sand from local beaches
Protect the mauri / lifeforce of our awa / waterways	Mitigate the effects of climate change by restoring freshwater ecosystems to provide ecological services such as flood mitigation, habitats for native biodiversity, and carbon sequestration through riparian planting	Enhanced ecological services due to restoration of freshwater ecosystems
	Support community groups to adopt local awa / waterways to help restore and maintain the natural environment	Community participation in restoration and maintenance of waterways



Our large natural areas are enhanced and protected	Support community-led initiatives to restore and enhance our natural environment	Community participation in restoring and enhancing our natural environment
	Implement the Howick Urban Ngahere Action Plan 2021 to increase tree canopy coverage on public land by 3%	Canopy cover increases across the local board area
	Support the Tūpuna Maunga Authority to protect and enhance Ōhūiarangi / Pigeon Mountain	Conversations with the Tūpuna Maunga Authority identify priorities for Ōhūiarangi / Pigeon Mountain which are reflected in our work programmes and / or advocacy
	Support Ngāi Tai ki Tāmaki in its management of Te Naupata / Musick Point	Conversations with Ngāi Tai ki Tāmaki identify priorities for Te Naopata / Musick Point which are reflected in our work programmes and / or advocacy
Accessible waste reduction services and activities	Support community, business and school initiatives to reduce waste to landfill, including construction and demolition waste	Increased participation of community groups, businesses and schools

Advocacy

Advocate to the Governing Body for:

- Increased regional funding for the restoration of our beaches and to address the effects of climate change on our coastline due to climate change, sea level rise and severe weather including a Shoreline Adaptation Plan for the Howick Local Board area.
- Improvements on our local stormwater and wastewater infrastructure to minimise overflow events
- Increased monitoring for illegal discharge into stormwater, our waterways and onto our beaches
- New assets and facilities to be environmentally sustainable
- Local landfill diversion facilities for south-east Auckland, such as a recovery centre and hazardous waste disposal

Advocate to local schools to:

- Make sustainability, environmental responsibility and waste management part of school values



Ormiston Town Centre



Basketball court, Barry Curtis Park

Tō Tātou Hapori

Our Community

Community participation is critical for the Howick Local Board area as the most populated local board area. It is through interactions with others that we build cohesion and resilience, essential characteristics to enable us to thrive in a changing world. We want to provide places for healthy, active lifestyles to suit our diverse communities in building on our network of parks and open spaces, and we will need to consider our environmental outcomes, sustainability and mitigations for (and resilience to) climate change.

In conjunction with open space facilities, we support community participation through the provision of services and spaces for people to interact. Buildings within the community infrastructure network are clustered around the more established areas of Howick, Highland Park and Pakuranga, and we must support the growing areas of Botany, Flat Bush and Ormiston.

We will work with local clubs and organisations to address capacity concerns and support them to build their resilience and capability by encouraging sharing and better utilisation of existing facilities.

However, we must also face the reality that there is a growing gap between the cost of renewing our facilities and the budget we have to maintain and renew those facilities. To better manage, we must consider how our assets are best used and if they continue to be fit for purpose or sustainable in light of a growing population and continuing budgetary challenges. We need to look at options to improve efficiency and potentially reduce our asset portfolio over time by changing the way we deliver some services or



combining service delivery together, to avoid the need to maintain multiple, expensive buildings. This may also lead to more focusing on maintaining our important assets before constructing new ones.

Despite this challenge, we will continue to advocate for the development of the Flat Bush Community Centre and Library to provide a much-needed community facility in the Flat Bush / Ormiston area of the Howick Local Board.

Challenges

- Reducing the gap between the cost of renewing and maintain our facilities and the budget we have available, by considering reducing our asset portfolio and reinvesting in our most important facilities.
- Encouraging and supporting local clubs to look for opportunities to share and better utilise existing facilities and resources.

Opportunities

- Create opportunities to bring people together to experience our rich cultural diversity through built form, spaces and places, for example, cultural gardens.
- Supporting better utilisation of facilities to promote mutual support and resilience for community groups and organisations.
- Continue to develop our many parks to suit people of diverse demographics and abilities.

Our Plan

What we want to achieve (Objectives)	What we will deliver in the next 3 years (Key Initiatives)	What success looks like (Measure of Success)
Community facilities, spaces and activities enable people to participate, learn and grow	Promote healthy living and sustainable lifestyles by supporting community-led initiatives, such as vegetable gardens, and by encouraging and educating the wider community about the benefits of growing your own food.	Increase in community-led initiatives
	Review and refresh the Healthy Howick programme	Healthy Howick programme reviewed and implemented
Parks and open spaces support a wide variety of recreational activities	Provide facilities and activities across our parks network to suit people of diverse demographics and abilities	Facilities we invest in are well utilised and users are satisfied
	Develop public gardens with our ethnic communities that reflect their culture and aesthetic preferences	
	Establish a sensory playspace that contains areas and equipment that provides stimulation of the senses for children with visual impairment or developmental disorder.	



Sports and recreational opportunities respond to the needs of our communities	Continue to support a multi-club and code facility at Lloyd Elsmore Park	Facilities we invest in are well utilised and users are satisfied
	Explore ways to assist local sports clubs to improve sharing and utilisation of existing facilities and resources, and / or new developments	Increased collaboration between local sports groups with regards to existing and new facilities and resources
Understand opportunities to optimise our asset portfolio.	Investigate the sale of underperforming service property assets to help fund priority projects	Facilities we invest in are well utilised, users are satisfied, and service gaps are addressed

Advocacy

Advocate to the governing body to:

- Build the community centre and library at Flat Bush / Ormiston and ensure it uses eco-friendly and environmentally sustainable building methods.



Splash Pad, Lloyd Elsmore Park



Howick Village Market

Ō Tātou Wāhi

Our Places

The Howick Local Board is looking to foster more partnerships with local town centres to enhance the vibrancy of the area and support local businesses. Part of this will involve working alongside the Howick Village Association and looking for ways that we can enhance and support their strategic plan. We will investigate how local board support can add value to the operations of privately owned town centres, both in terms of supporting our local business people, and adding benefit for the local community.

Transport

Transportation plays an important role in the well-being of our communities and the health of local economies. Transport links connect people, trade, and enables access to recreation, education and work. We will continue to advocate for the retention of the Local Board Capital Transport Fund, which allows us to deliver local improvements for traffic and pedestrian safety, town centre amenity and infrastructure such as bus stops. Alongside this we will be advocating to Auckland Transport for improvements in our public transport network to ensure better access for the community to existing services, and to provide more services throughout the local board area – particularly in the Flat Bush / Ormiston areas.

We will also continue to represent community interests in the ongoing delivery of the Eastern Busway to fully capitalise on the opportunities that this brings.



Walking cycling network

One of those opportunities presented by the development of the Eastern Busway is how the local board can look to maximise the construction of more commuter focused cycleways into the industrial areas of East Tamaki and Highbrook. These will add to the walking and cycling network in the local board area, which we continue to build on, and provides another safe transport option for workers in the area and people using that route.

Infrastructure

We will also strongly urge the Governing Body to ensure there is adequate infrastructure in place before further housing intensification is allowed to occur. The Howick Local Board recognises the need for housing, and more affordable housing, but this should not be at the cost of overloading systems, for example stormwater, that are already struggling to cope.

Challenges

- Privately owned town centres (at Pakuranga, Highland Park, Botany and Ormiston) limit potential to develop community facilities in and around them.
- Upgrading infrastructure in older areas to ensure that it can cope with ongoing housing intensification.
- Growing residential areas in the Botany / Ormiston / Flat Bush areas have limited access to public transport and related infrastructure

Opportunities

- Enhanced partnerships with the strong Business Improvement Districts of the Howick Village Association and Business East Tamaki.
- Partnerships with the privately owned town centres to support local businesses.
- Provide greater connectivity to the Eastern Busway, Half Moon Bay Ferry and the East Tamaki / Highbrook business areas with cycling/walkway routes, bus feeder services.

Our Plan

What we want to achieve (Objectives)	What we will deliver in the next 3 years (Key Initiatives)	What success looks like (Measure of Success)
Vibrant town centres	Partner with Howick Village Association to support implementation of aspects of their strategic plan where it aligns with Howick Local Board outcomes	Partnerships are developed and plans agreed
	Investigate partnerships with privately owned town centres to support local business	
	Investigate partnerships and / or opportunities for a dedicated youth space	



Public transport services that people can easily access	Continue to represent community interests in the delivery of the Eastern Busway, whilst maximizing public benefit	Improved commuter experience
Active transport infrastructure enables connection with schools, key community facilities and transport hubs	Implement projects from the Howick Walking and Cycling Network Plan that increase connectivity to schools, places of sport and recreation, Eastern Busway, Half Moon Bay Ferry, and Highbrook	Walking and cycling facilities are well utilised and users satisfied
	Investigate options for more commuter focused cycleways in partnership with the Eastern Busway Alliance and other stakeholders	

Advocacy

Advocate to Auckland Transport for:

- Retention of the Local Board Transport Capital Fund
- feeder bus services or other innovative on demand services that will enable the community to access the existing bus / ferry networks
- more bus services to serve all areas of the local board, but particularly the fast-growing areas of Flat Bush and Ormiston
- provision of more ferry and train services

Advocate to the governing body to:

- Ensure adequate infrastructure is in place before approving housing intensification
- Retain the Local Board Transport Capital Fund



Inside Ormiston Town Centre



Botany Town Centre

Tā Tātou Ōhanga

Our Economy

A strong, prosperous local economy that everyone can participate in is vital to the well-being of the entire community. The council's Economic Development Action Plan 2021 – 2024 includes a focus on local areas with the goal of enabling thriving local communities by supporting local economic development by providing, amongst other things, regenerating town centres to ensure they thrive, establishing a consistent approach to local economic places of focus, and ensuring local businesses benefit from existing support programmes. The recent pandemic has highlighted that our economy needs to be constantly agile and innovative to be resilient against disruption in a changing world. It is unlikely we will return entirely to business as usual. We will be working alongside key partners and stakeholders, such as Tātaki Auckland Unlimited, try and build resilience and sustainability, and to ensure people can access training and education so they have the skills employers will be seeking.

Local employment opportunities, particularly for youth, mean people can live and work locally. We will continue our efforts to attract new businesses to locate in the area. We will also continue to work with East Auckland Tourism and link with neighbouring local boards on ways to bring more visitors to explore and experience our area.

This also includes working alongside Business East Tāmaki and the Howick Village Association to support them in delivering their strategic plans, and to help them consider potentially expanding their Business



Improvement Districts. The local board will also explore opportunities for the establishment of new Business Improvement Districts

Challenges

- Limited opportunity for the council to influence development and operation of privately owned town centres at Pakuranga, Highland Park Botany and Ormiston.
- Attracting more visitors to the Howick Local Board area.

Opportunities

- Large and youthful population to support business / employment.
- Promote local business opportunities to tender for local council contracts.
- Look at options for growing the area's presence in regional tourism and economy.
- Strong Business Improvement Districts in Howick Village Association and Business East Tamaki.

Our Plan

What we want to achieve (Objectives)	What we will deliver in the next 3 years (Key Initiatives)	What success looks like (Measure of Success)
Support local business recovery	Identify opportunities for social enterprise developed by communities	Local businesses are engaged and supported by the local board
	Investigate opportunities for local business to tender for council contracts	
	Support building resilience initiatives for local business	
	Support Business Improvement Districts and wider business communities with regards to their crime prevention initiatives	
Generate business activity and employment by increasing visitor numbers to the Howick Local Board area	Support East Auckland Tourism to increase the number of visitors to the area and implement actions from the Howick Tourism Plan	Tourism opportunities and visitor numbers grow
	Support East Auckland Tourism in becoming more self-sufficient	East Auckland Tourism becomes self-supporting
	Investigate options for growing our presence in regional tourism and economy	Tourism opportunities and visitor numbers grow
	Continue to provide operational funding support for the Howick Historic Village	

Support growth of businesses in the Howick Local Board area's key industrial and commercial areas	Support local Business Improvement Districts (Business East Tāmaki and Howick Village Association)	Business Improvement Districts are engaged and supported by the local board
	Investigate options to expand the Business Improvement Districts, including addition of new districts.	
	Support initiatives that facilitate local youth into training and employment	Increased training and employment opportunities for youth



Advocacy

Advocate to the Governing Body for:

- Changes to the Procurement policy to allow greater use of smaller, local businesses.

Advocate to Auckland Transport for:

- Improvement in freight and commuter connectivity for business communities



Skate park, Barry Curtis Park



He kōrero take pūtea

Funding information

The local board funding policy sets out how local boards are funded to meet the costs of providing local activities and administration support.

Local board funding is approved through the council's budget-setting process. This involves the council's Governing Body adopting a 10-year budget (long-term plan) every three years and an annual budget every year. Local board agreements, in which the local board and the governing body agree the local board budget for each year, make up part of the annual budget.

The council's budget-setting process involves allocating funding gathered through revenue sources such as rates and user charges. It also involves setting levels of service for council activities and corresponding performance targets.

The financial and levels of service statements in this plan are based on the information included in the 10-year Budget 2021-2031 and updated through subsequent annual budget. Updated financial information and levels of service will be adopted as part of the 10-year Budget 2024-2034 which is due to be adopted in June 2024. The 10-year Budget will be informed by the local board plans and may impact the initiatives in this local board plan.



Kaupapa ā-rohe me ngā paerewa ā-mahi

Local activities and levels of service

The current 10-year Budget 2021-2031 outlines local board responsibilities, provided for directly in legislation or allocated to local boards, are summarised into local activities and levels of service statements. These are described in the table below.

More information regarding the most recent levels of services, including performance measures and performance targets, can be found in the Howick Local Board Agreement 2023/2024 and in the 10-year Budget 2021-2031 (Vol 2 section 2.6). This is available on the council website.

The levels of services and performance measures for local activities will be reviewed as part of the 10-year budget 2024-2034 and targets reviewed subsequent Annual Budgets.

Local Activities	Level of service statements
Local Community Services	
We support strong, diverse, and vibrant communities through libraries and literacy, arts and culture, parks, sport and recreation, and events delivered by a mix of council services, community group partnerships and volunteers	<p>Provide safe, reliable, and accessible social infrastructure for Aucklanders that contributes to placemaking and thriving communities</p> <p>Utilising the Empowered Communities Approach, we support Aucklanders to create thriving, connected and inclusive communities</p> <p>We provide safe and accessible parks, reserves, beaches, recreation programmes, opportunities and facilitates to get Aucklanders more active, more often</p> <p>We showcase Auckland's Māori identity and vibrant Māori culture</p> <p>We fund, enable, and deliver services, programmes, and facilities (art facilities, community centres, hire venues, and libraries) that enhance identity, connect people, and support Aucklanders to participate in community and civic life</p>
Local Planning and Development	
We support local town centres and communities to thrive by developing town centre plans and development, supporting Business Improvement Districts (BIDs), heritage plans and initiatives	We help attract investment, businesses and a skilled workforce to Auckland
Local Environmental Management	
We support healthy ecosystems and sustainability through local board-funded initiatives such as planting, pest control, stream and water quality enhancements, healthy homes, and waste minimisation projects.	We work with Aucklanders to manage the natural environment and enable low carbon lifestyles to build resilience to the effects of climate change



Local Governance

Activities in this group support the local board to engage with and represent their communities, and make decisions on local activities. This support includes providing strategic advice, leadership of the preparation of local board plans, support in developing the local board agreements, community engagement including relationships with mana whenua and Māori communities, and democracy and administrative support.

The measures for this group of activities are covered under the Regional Governance group of activities in the Long-term Plan which determine participation with Auckland Council decision making in general. This includes local decision-making

Tirohanga take pūtea whānui

Financial overview

Revenue, expenditure and capital investment by local activities for the Howick Local Board for the period 1 July 2023 to 30 June 2024.



Annual Plan Financials		2023/2024 (\$000s)
Operating revenue		
Local community services		5,256
Local planning and development		-
Local environment management		-
Total operating revenue		5.256
Operating expenditure		
Local community services		29,726
Local planning and development		574
Local environment management		581
Local governance		1,160
Total operating expenditure		32,041
Net operating expenditure		26,785
Capital expenditure		
Local community services		3,643
Local planning and development		-
Local environment management		-
Local governance		-
Total capital expenditure		3,643



Ngā Mema o tō Poari ā-Rohe o Howick

Your Howick Local Board members



Damian Light
Chairperson

m. 027 276 3822

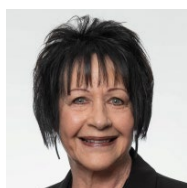
damian.light@aucklandcouncil.govt.nz



Bo Burns
Deputy Chairperson

m. 021 197 5849

bo.burns@aucklandcouncil.govt.nz



Adele White

m. 021 284 3843

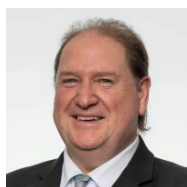
adele.white@aucklandcouncil.govt.nz



Bruce Kendall, MBE

m. 021 198 1380

bruce.kendall@aucklandcouncil.govt.nz



David Collings

m. 027 576 2350

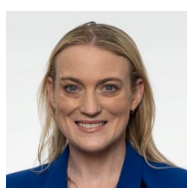
david.collings@aucklandcouncil.govt.nz



John Spiller

m. 021 286 7666

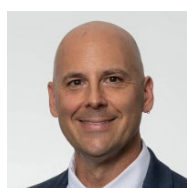
john.spiller@aucklandcouncil.govt.nz



Katrina Bungard

m. 0800 528 286

katrina.bungard@aucklandcouncil.govt.nz



Mike Turinsky

m. 021 804 742

mike.turinsky@aucklandcouncil.govt.nz



Peter Young, JP

m. 027 587 4888

peter.young.howick@aucklandcouncil.govt.nz

Find out more



<https://www.aucklandcouncil.govt.nz/about-auckland-council/how-auckland-council-works/local-boards/all-local-boards/howick-local-board/Pages/default.aspx>



facebook.com/HowickLB



Sign up for the Howick Local Board E news

