

Kaipātiki Local Board Workshop Programme

Date of Workshop: Wednesday 7 February 2024
Time: 10.00am
Venue: Boardroom, 90 Bentley Ave, Glenfield

Time	Workshop Item	Presenter	Governance role	Proposed Outcome(s)
10.00 – 12.00pm	Customer and Community Services - Parks and Community Facilities <ul style="list-style-type: none"> • Sunsmart project update • Update on bins 	<p>Sarah Jones Manager Area Operations (DT & KLB), Parks and Community Facilities</p> <p>Neil Atkinson Programme Manager (FF Contracts), Parks and Community Facilities</p> <p>Shane McInnes Operations Contract Manager, Tahi area, Ventia</p>	<ul style="list-style-type: none"> • Keeping informed 	<ul style="list-style-type: none"> • Receive update
12.00 – 12.45pm	Lunch			

12.45 – 2.00pm	<p>Infrastructure and Environmental Services</p> <ul style="list-style-type: none"> • Kaipātiki Project • Pest Free Kaipātiki 	<p>Nick FitzHerbert Team Leader Relationship Advisory, Infrastructure and Environmental Services</p> <p>Mary Stewart Senior Conservation Advisor, Infrastructure and Environmental Services</p> <p>Janet Cole Kaihautū – Chief Executive, Kaipātiki Project</p> <p>Joanne Kyriazopoulos Funding & Impact Lead, Kaipātiki Project</p> <p>Annie Dignan General Manager, Pest Free Kaipātiki</p> <p>Fiona Smal Senior Restoration Advisor, Pest Free Kaipātiki</p>	<ul style="list-style-type: none"> • Setting direction 	<ul style="list-style-type: none"> • Define board position and feedback
----------------	---	---	---	--

Next workshop: Wednesday 14 February 2024

14-Feb-24	9.15am	9.50am	Members only time
	10.00am	11.00am	Customer and Community Services - Connected Communities
	11.00am	11.10am	Break
	11.10am	12.10pm	17A Pools & Leisure RFP Process - CONFIDENTIAL
	12.10pm	1.30pm	Lunch - Te Ara Awataha BBQ lunch and photo
	1.30pm	2.30pm	Online session - TBC
	2.30pm	3.30pm	Auckland Emergency Management - Local Board Response and Resilience Plan - online session via MS Teams
	3.30pm	4.30pm	Finalise Engagement items - online session via MS Teams

Role of Workshop:

- (a) Workshops do not have decision-making authority.
- (b) Workshops are used to canvass issues, prepare local board members for upcoming decisions and to enable discussion between elected members and staff.
- (c) Workshops are open to the public however, decisions will be made at a formal, public local board business meeting.
- (d) Members are respectfully reminded of their Code of Conduct obligations with respect to conflicts of interest and confidentiality.
- (e) Workshops for groups of local boards can be held giving local boards the chance to work together on common interests or topics.

Sunsmart Project – Update

7 February 2024

Sarah Jones, Manager Area Operations
Parks & Community Facilities



Purpose

To provide further information on proposed sites and estimated costs

Direction required for priority for financial year

- 2023/2024
- 2024/2025





Investigations

Playgrounds were visited to assess requirement for shade, the findings were:

- Some already have shade sails/trees
- Some due a full or partial renewal so can have shade designed
- Three were identified for immediate options
 - Highgrove Reserve
 - Jacaranda Avenue Reserve
 - Vandeleur Reserve

Actions/recommendations:

- Highgrove was chosen by the board, and completed in December
- Jacaranda is a small play area and very close to neighbours, so is not recommended
- Vandeleur is a new playground and would benefit from shade

Two options have been provided, one for the low equipment and a second to include the higher equipment.

Name	Asset ID	Local Board	Type
Celeste Reserve	20815-L003-L01-P01	Kaipatiki	Neighbourhood
Highgrove Reserve	20838-L003-L01-P01	Kaipatiki	Neighbourhood
Lysander Crescent Reserve	22095-L005-L01-P01	Kaipatiki	Neighbourhood
Manuka Reserve	20075-L005-L01-P01	Kaipatiki	Suburb Park
Tamahere Reserve	11099-L004-L01-P01	Kaipatiki	Neighbourhood
Locket Reserve	22158-L003-L01-P01	Kaipatiki	Neighbourhood
Powrie Reserve	22185-L003-L01-P01	Kaipatiki	Neighbourhood
Camelot Reserve	22256-L003-L01-P01	Kaipatiki	Neighbourhood
Leiden Reserve	21069-L003-L01-P01	Kaipatiki	Neighbourhood
Cadness Reserve	22135-L003-L01-P01	Kaipatiki	Neighbourhood
Cadness Loop	22132-L003-L01-P01	Kaipatiki	Neighbourhood
Lindisfarne	11033-L003-L01-P01	Kaipatiki	Neighbourhood
Vandeleur Reserve	20800-L003-L01-P01	Kaipatiki	Neighbourhood
Lancelot Reserve	22294-L003-L01-P01	Kaipatiki	Neighbourhood
Monarch Park	22167-L003-L01-P01	Kaipatiki	Neighbourhood
Neptune Avenue Reserve	20351-L003-L01-P01	Kaipatiki	Neighbourhood
Portsea Reserve	20885-L003-L01-P01	Kaipatiki	Neighbourhood
Windy Ridge Reserve	22218-L003-L01-P01	Kaipatiki	Neighbourhood
Stanaway Reserve	22199-L003-L01-P01	Kaipatiki	Neighbourhood
Fernwood Grove	22275-L003-L01-P01	Kaipatiki	Neighbourhood
Taurus Crescent Reserve	20856-L003-L01-P01	Kaipatiki	Neighbourhood
Rotary Grove (Northcote)	20919-L003-L01-P02	Kaipatiki	Neighbourhood
Jacaranda Avenue Reserve	22034-L004-L01-P01	Kaipatiki	Neighbourhood
Inwards Reserve	22027-L003-L01-P02	Kaipatiki	Neighbourhood
Opaketai Beach Haven Garden	11115-L004-L01-P01	Kaipatiki	Civic Space

Playgrounds visited



Kaipatiki Sunsmart

Playgrounds Investigated Further

Highgrove Reserve completed in December \$17,585

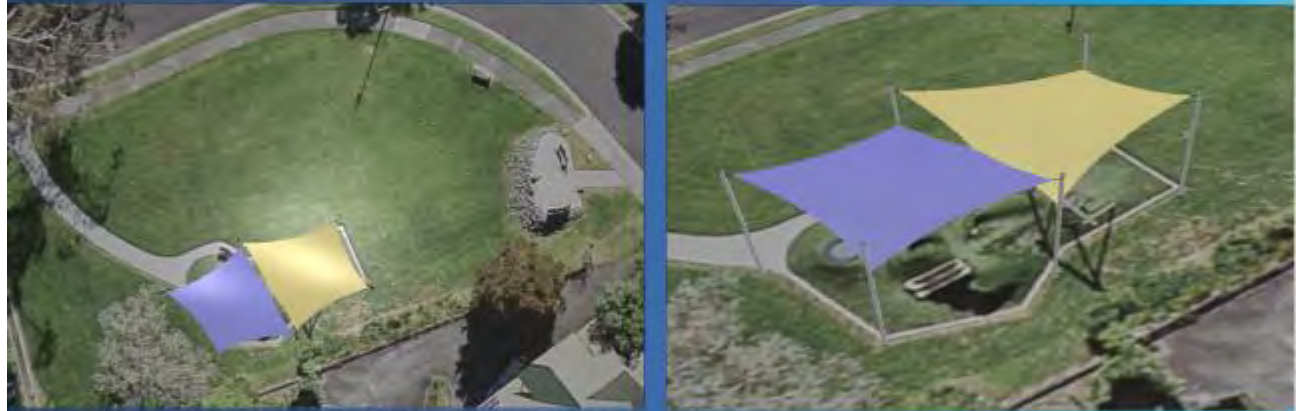
Jacaranda Avenue Reserve \$29, 833

Vandeleur Reserve option 1 - low equipment \$28, 960

Vandeleur Reserve option 2 - high equipment \$59,216



Vandeleur Ave Reserve, Birkdale, Auckland 0626



Jacaranda Ave Reserve, Beach Haven, Auckland 0626



Highgrove Reserve, Tolaro Vale, Auckland 0632



PLAY ANNOTATIONS

1. Drinking Fountain
2. Proposed concrete footpath for all weather accessible access through the playspace with line marking and text to enable imaginative and social play.
3. Retain and refurbish existing pavement area including sandblasted / applied surface finishes to enable creative social play / games such as four square and inner basketball line markings.
4. Proposed social seating area with shade structure.
5. Refurbish existing timber post with the addition of a basketball hoop with backboard.
6. Proposed pull up bar structure providing an additional climbing adventure element
7. Proposed seating integrated into edge beam walk to create social opportunities adjacent spinner module.
8. Proposed agility climbing net complements adjacent agility / fitness features as part of confidence / agility course playspace activities.
9. Low retaining structure with applied surface finishes to enable imaginative and social play.
10. Proposed social spinner module.
11. Vertical climbing rope provides speed and strength-based adventure element in addition to fitness function.
12. Proposed swing set with 2no. belt and 1no. toddler seats.
13. Proposed nature / *māra hūpara* and agility play activity walk nestled between specimen trees.
14. Construct low deck structure and integrate with existing pole and proposed agility walk to create localised social node seat in low native planting.
15. Scattered low native planting with localised boulders and harmony bells and stepping pods to encourage exploration.
16. Proposed 1.8m fall tube slide associated with seating, flush deck canopy and timber stair access nestled in low native planting.
17. Proposed low native planting transition to grassed open space incorporating agility play / activity walk nestled between specimen trees.
18. Proposed citrus row (compact mandarin or similar species) for incidental seasonal foraging and interest.
19. Proposed concrete pavement connection to existing footpath.
20. Retain existing hedge along western boundary.
21. Talking tubes top and bottom of slide
22. Proposed 1 no. individual harmony bell off accessible entrance pavement

LINLEY RESERVE PLAYGROUND RENEWAL

Overall Concept Plan

PARK PLAN

SCALE 1: 250 @ A3



NOTES

- ① Proposed accessible play with wetpour surfacing
- ② Junior play space with bark cushionfall & sunsails
- ③ Proposed nature play under existing trees with bark cushionfall
- ④ Proposed new footpath connection
- ⑤ Proposed picnic area
- ⑥ Proposed monkey bars
- ⑦ Proposed rotating equipment with bark cushionfall
- ⑧ Proposed amenity planting

KEY

- - - Site extent
- Existing trees
- Proposed wetpour surfacing
- Proposed planting
- Open lawn space
- Bark safety surfacing
- Concrete path
- Picnic table
- Seat
- Rubbish bin



Upcoming Playground Renewals

Budget has been identified to assist with including shade into the following playground renewals in the work programme, for financial year 2045/25

- Lindisfarne Reserve \$35,000
- Taurus Reserve \$85,000
- Leiden Reserve \$40,000
- Linley Reserve \$27,000

These are estimated costs and to be confirmed with design. If we include the \$28,960 for the smaller option 1 at Vandeleur, the project totals are:

- Forecast \$250,000
- Allocated budget \$220,000

Cost Worksheet > Summary ?

#40045 Kaipātiki - sunsmart priorities for playspaces

Total Allocated Budget	FY25	All FYs	Forecast EAC	FY25	All FYs
Capex	\$100,000.00	\$220,000.00	Capex	\$207,960.06	\$230,164.95

+ Staff Expenses	2,000.00
Internal Charges - time (90000)	2,000.00
+ Professional Services	10,000.00
Consultancy Expense (40410)	10,000.00
Maori engagement inc consultation (40...	0.00
+ Physical Works	195,960.06
Outsourced works and services (40810)	0.00
Highgrove	
Lindisfarne	35,000.00
Vandeleur	28,960.06
Taurus	65,000.00
Linley but not confirmed	27,000.00
Leiden Res	40,000.00

Your invitation to partner with us.



Kaipātiki Project

share in nature's revival



2024/25 Programme Proposal

kaipatiki.org.nz | Registered Charity No: CC38074





What we value

Manaakitanga

We seek to encourage and uplift all those we welcome and work with.

Whanaungatanga

We nurture relationships and reciprocal connections that build belonging to community and place.

Kaitiakitanga

We continue to develop shared caring for and responsibility to our local places.



Kaipātiki Project

share in nature's revival



Kaipātiki Project
is an innovative
EcoHub, growing
a sustainable
future for people
and nature.



Kaipātiki Project
share in nature's revival

Established in 1998, we:

- Operate a **NATIVE PLANT NURSERY** with volunteers growing 40,000+ plants annually.
- Drive **FOREST, STREAM** and **ESTUARY REGENERATION** with pest control and community engagement.
- Run free composting workshops across Auckland through **COMPOST COLLECTIVE**.
- Support **FOOD RESILIENCE** initiatives.
- Promote **ZERO WASTE** practices among local businesses and residents.
- Deliver sustainable living **COURSES, EVENTS** and **EXPERIENCES**.



2024/25 Programme Vision

- Leadership and delivery on Kaipātiki Climate Action Plan
- Leadership and delivery on Local Board Plan for Te Taiao and Te Whai Wāhitanga me te Oranga
- Contributing to Māori Outcomes
- Acknowledging increased cost of living



Kaipātiki Project

share in nature's revival



2024/25 Programme Proposal

- EcoHub Operations \$30,000
- Volunteer Opportunities \$25,000
- Regenerative Environments \$25,000
- Community Connection \$20,000
- Education for Sustainability \$20,000
- EcoFest North \$10,000

Total \$130,000



Kaipātiki Project

share in nature's revival



EcoHub Operations

- A place to meet and welcome our diverse community
- Vital community infrastructure
- Public engagement; environmental, climate action and sustainable living
- Open Mon-Fri (exc public holidays and Christmas break)
- EcoHub available to hire/use by other groups



Kaipātiki Project
share in nature's revival



Volunteer Opportunities



Te Whai Wāhitanga me te Oranga Belonging and wellbeing

- Host 90 volunteer sessions in native plant nursery, teaching garden and compost hub
- Host interns enhancing their studies through hands on experience
- Host monthly new volunteer 'Welcome Sessions'
- Volunteering opportunities to support admin, marketing, communications, community engagement, education....
- Volunteer Governance Board



Kaipātiki Project

share in nature's revival



Regenerative Environments

Te Taiao Our natural environment is restored and protected for future generations to enjoy.

- Implementation of Kaipātiki Project Vision for Biodiversity REGENERATION FRAMEWORK (including Monitoring & Evaluation)
- 40+ volunteer group sessions
- 10 sites under community management in Eskdale Reserve Network & Witheford Reserve
- Pest plant and animal control
- Active participation in Kaipātiki Restoration Network



Kaipātiki Project

share in nature's revival



Community Connections

- Enable well connected community networks that work collaboratively to achieve common goals.
- Support Matariki community celebrations in Kaipātiki area
- Identifying and connecting new initiatives across programmes and local organisations
- Generate income through funding partnerships and sponsorship to increase environmental and climate action programmes for Kaipātiki



Kaipātiki Project
share in nature's revival



Education for Sustainability

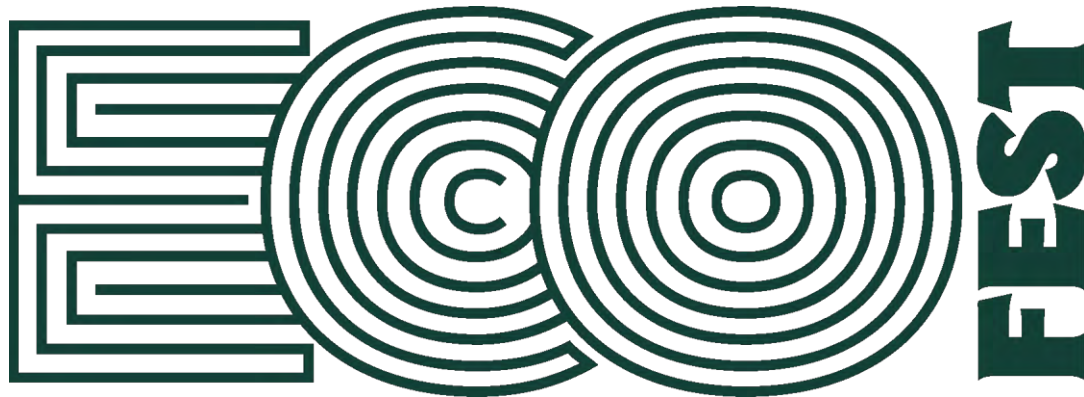
Our people are environmentally aware and live sustainably.

- Host a range of experiential learning opportunities for community and schools
- 20+ events/workshops
- 200+ participants
- Online educational resources





EcoFest



- 🌱 500+ Region wide Events/Activities *43 in KLB area
- 🌱 Collaboration with Kaipātiki Project, EcoMatters, Waiheke Resources Trust and Manukau Beautification Trust for regional presence and make EcoFest accessible to a wider audience, working together increases efficiencies and reach!
- 🌱 Event categories: Torohē Nuku Explore Nature, Kīnaki Kai Reka Foodies' Fix, Te Whaihanga Makers' Mayhem, Mauri Noho Conscious Living, and Waka Hourua Clean Transport.
- 🌱 <https://www.ecofest.org.nz/>



Kaipātiki Project
share in nature's revival

THANK YOU

for partnering with us
to grow a sustainable
future for people and
nature.

Your support and
involvement have a
real impact on the
environment and
people in our
communities.

Ngā mihi

Janet Cole
Manager@Kaipatiki.org.nz
021 393 736



Kaipātiki Project

share in nature's revival



Presentation to KLB

PFK Vision and Programmes

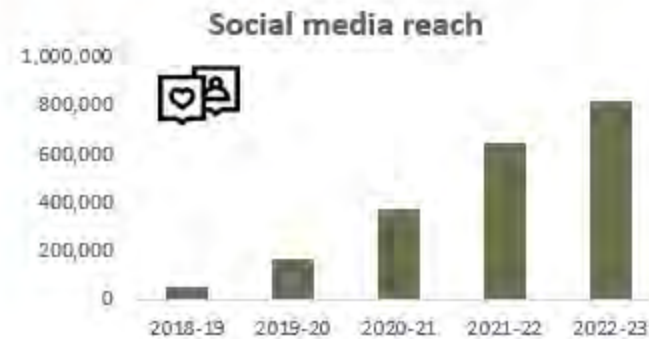
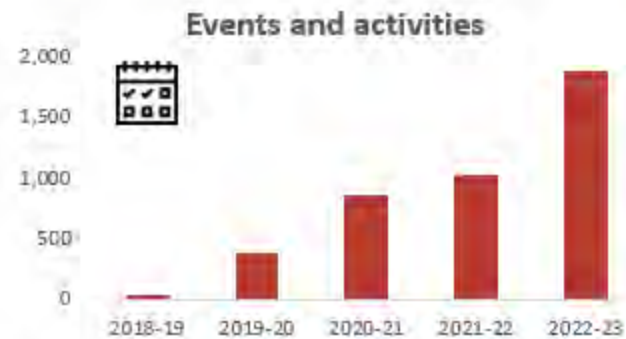
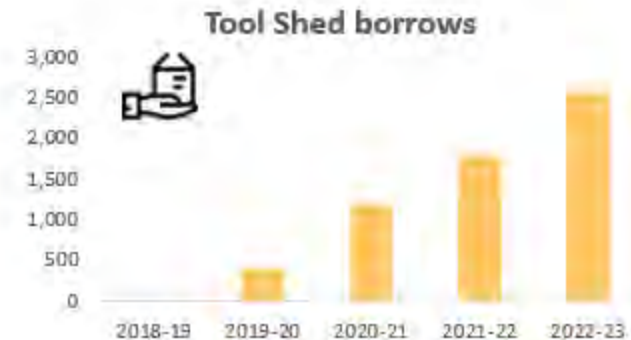
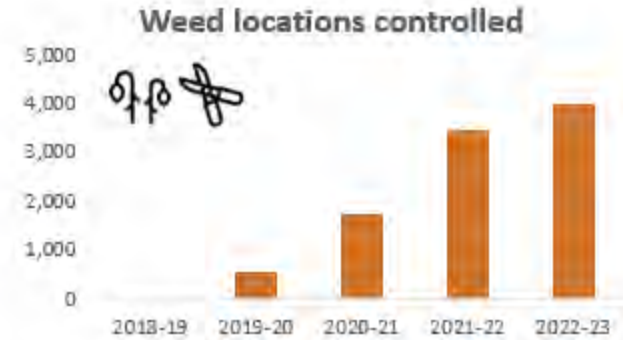
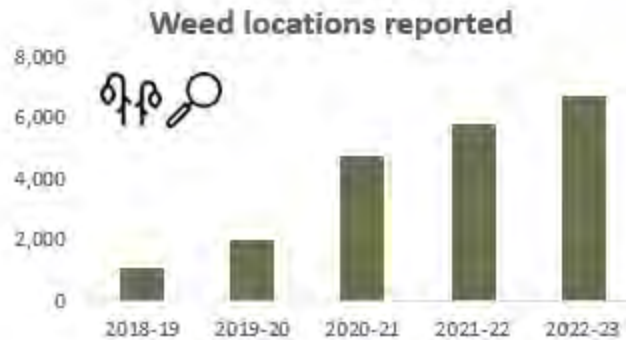
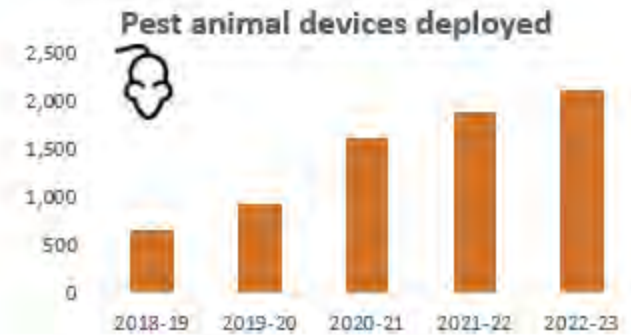
PFK Vision: Kaipātiki - a place where community and the natural environment flourish

PFK Purpose: To inspire, educate and resource people to make positive change in our natural environment and community



PFK Reporting measures past 5 years

Data from reporting periods 1 July 2018 to 30 June 2023 collected by Pest Free Kaipātiki Restoration Society showing cumulative totals.



External Endorsement for PFK Methods



Tracking Social Outcomes From Environmental Protection Activities in Tāmaki Makaurau, Auckland 2022

Natalia Booth, Rebecca Stanley, Craig Simpkins

November 2023

Technical Report 2023/20



Based on what we found, the most effective way to increase the rate of conservation at home is by increasing Aucklanders' practical skills, e.g. capability building around planting, weeding, and trapping. Another source of behaviour associated with conservation at home

Page 17

The results regarding the relationship between community-led conservation and the sources of behaviour indicate that conservation groups possess a prime opportunity to enhance the involvement of Auckland residents in community conservation efforts. This is attributed to the ability of the community groups to 1) establish a supportive social atmosphere that fosters social interaction, 2) enhance the practical skills of their members, and 3) create opportunities by initiating conservation projects and providing means to carry out these projects. Given only a weak association between conservation at home and community-led conservation, prioritising the growth and functioning of the conservation groups stands out as the most effective strategy to increase public participation in community-led conservation.

Page 18

biosecurity measures and value them. Our findings also highlighted the effectiveness of targeted, location-specific interventions in the context of addressing kauri dieback. The more people engaged with a corresponding activity (e.g. bush walking in relation to kauri dieback) and were exposed to interventions, the more inclined they were to follow the biosecurity guidelines. These location-specific interventions could serve as a valuable model for achieving increased levels of biosecurity compliance.

Page 20

Report Recommendations

Increase rate of conservation at home	PFK
Increase practical skill e.g planting, weeding, trapping	✓

Community Led Conservation Recommendations

Increased engagement in community led conservation

Establish a supportive social atmosphere that fosters social interaction	✓
Enhance the practical skills of our members	✓
Create opportunities by initiating conservation projects and providing the means to carry out the projects.	✓

Future Focused Projects

2024-2025



Making Ecology Count

Aims:

- Improve the consistency of reporting measures.
- Make reporting measures more outcome-focused and less output-focused.
- Pest-free groups and Council working together to find solutions to the first two aims, which benefit all those involved.

Leading to:

- 'a common language' - better comparisons, easier analyses, improvement of methods, efficiency savings, more motivation for volunteers – better story telling
- contribution to bigger picture of ecological restoration across the region



Results – use of data

Do you know how your data is being utilised by the people you are reporting to? (Q.9)

- Mixed results. Indicates room for improvement in this area.
 - 4 answers interpreted as 'No', 5 as 'Some idea', 4 as 'Yes'

Do you know how your data is being integrated into a bigger regional or national picture? (Q.10)

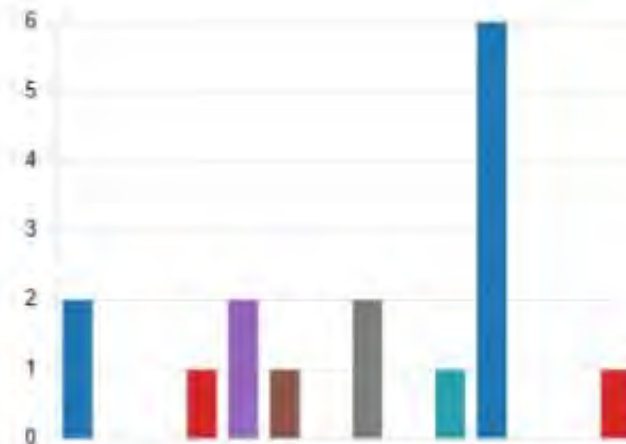
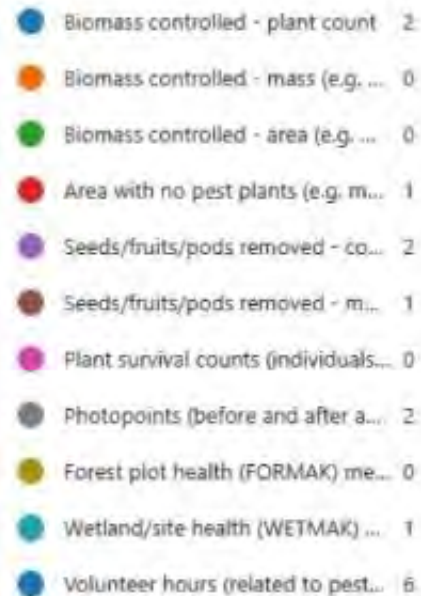
- Mixed again but more than half were unsure
 - Interpreted as 8 answers 'No or unsure', 3 answers as 'yes'

A word cloud visualization of responses for Q.10. The word 'No' is the largest and most prominent, colored in a dark teal. Other words are smaller and scattered around it. The words include: 'support', 'Unknown', 'free island', 'Trap NZ', 'island project', 'cases', 'peninsular project', 'pest available', 'Yes', 'AC', and 'Unsure'. The words are in various shades of teal and green.

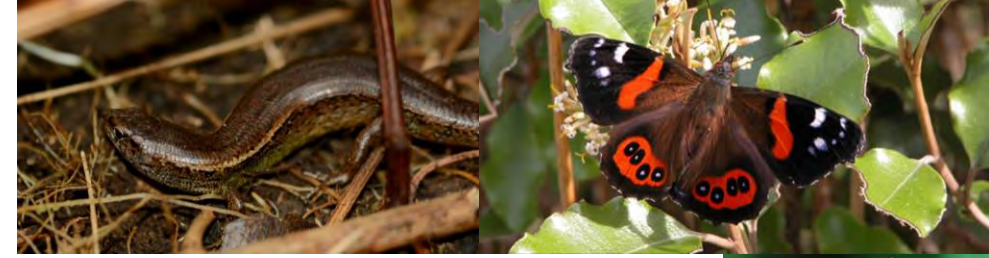
Results – Pest plant data

What measures within pest plants/environmental weeds do you currently collect? (Q.17)

- From 9 respondents, **7 different types of data** collected
 - Volunteer hours related to pest plants work being most common.
- No consensus across groups



Greening the Green



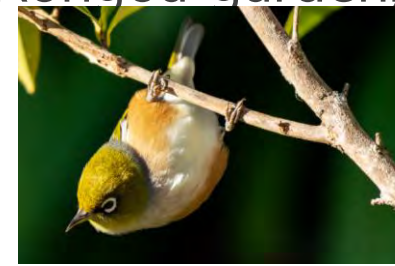
Volunteers 'moving from the inside – outside'

- Improvements ongoing inside community building, and now work begins on the first two 'Demonstration Garden' one of which is also going to help fix flooding issues.



Low Grow, Insect & Lizard friendly garden and a 'Native Pollinator' garden

- **Visual** and in places **interactive** planted garden for public to learn & duplicate
- Encourages selecting natives
- Incorporates educational material, interactive fixtures like a tracking tunnel, insect homes, and sites several 'call to actions' to project resident wildlife
- Further ideas for gardens would include a collaborative Rongoā garden, planting for birds and alternative hedging



Mandarin Speaking Conservation Group

KLB Plan 2023 states: *"Our Asian population is rapidly growing and the current figure of 34 per cent is expected to reach 57 per cent by 2043"*

PFK have run some entry educational and experience events targeted at this growing community and in 2024 PFK wishes to increase capacity to address.



2024 Goals:

- Increase awareness
- Collaborate with others
- Translational material
- Foster a Chinese Conservation Group for our parks



Projects and Problems Tool

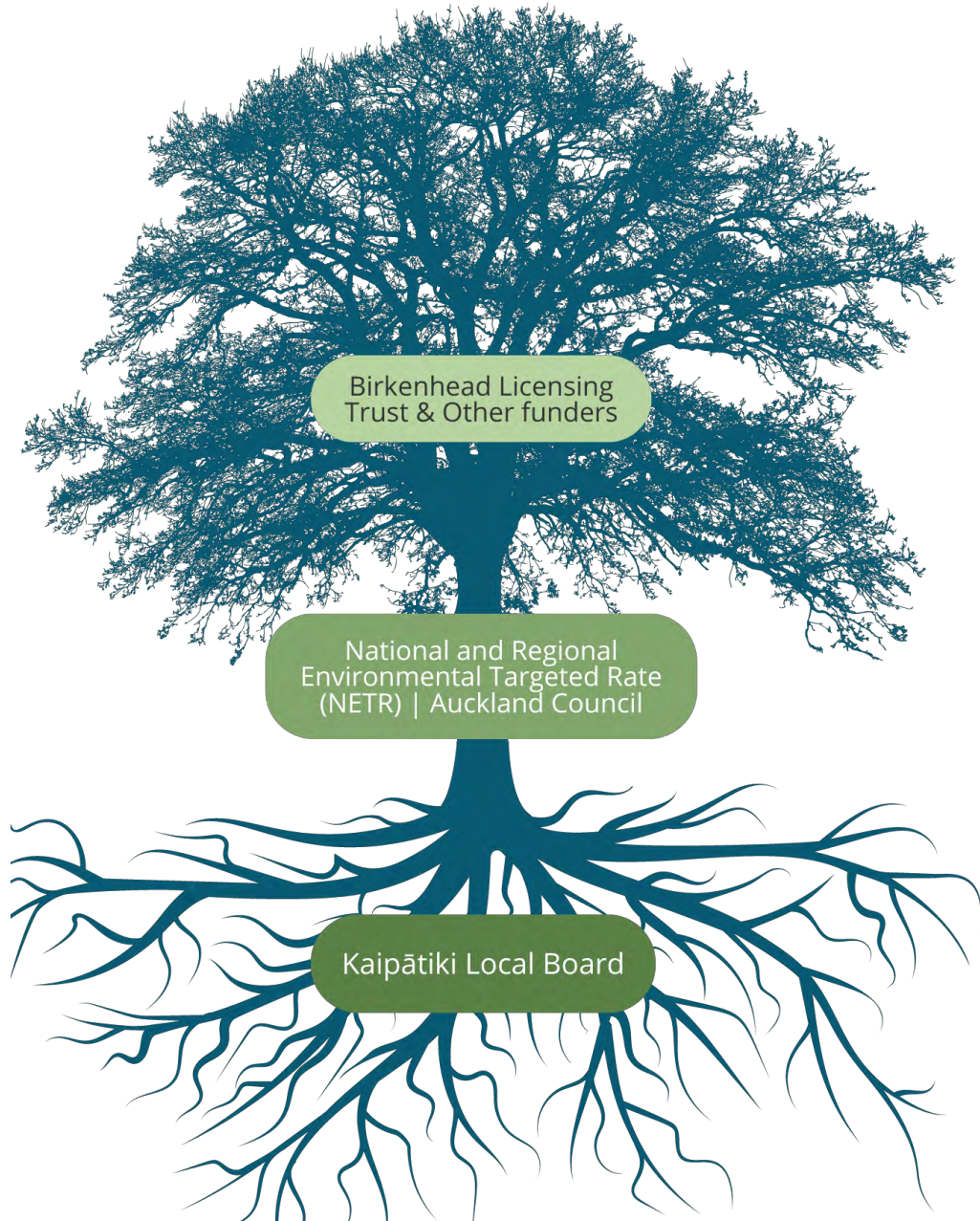
The screenshot displays the CAMS GIS eToolkit interface. The top header is green with the text "CAMS GIS eToolkit" on the left and "ECONET CAMS" on the right. The main area is a map of a residential neighborhood with various colored circular markers representing different types of projects and problems. The left sidebar contains several sections: "Plans & Problems Map (PFK only)" with a search bar and a "Click for PnP Table view" button; "Editor" with a "Settings" dropdown; "Edit features" with a "Select" button; "Create features" with a "Filter types" input field; and "Plans & Problems Instances - Type Icons" which lists several categories with corresponding icons: "Blocked or Broken Drain", "Broken Asset", "Hazard eg Barbed Wire", and "Land Slip". The map shows numerous markers with labels such as "SiltationOrErosion", "LandSlip", "OtherProblem", "WARNING", "TrackRenewalProject", "BlockedDrain", "RUBBISHDUMPED", "TreeFall", "PlannedEventRegular", "ProjectOther", "BrokenAsset", "PlantingProject", and "TrackRepair". The map includes street names like Eskdale Rd, Salisbury Rd, Verbona Rd, Waipa St, Mokoia Rd, Birkenhead, Hinemoa St, and others. A scale bar at the bottom left indicates 500 meters. At the bottom right, there is a search icon and the text "Selected features: 0".

PFK foundational programmes continue

- Kauri Dieback and myrtle rust
- Pest plant buffer programme – Hit Squad growth and support
- Predator programme – mass data drive – new mangrove trapping trial
- BFA protection around Soldiers Bay
- PFK intern programme
- Slip restoration
- Reserve group support and growth



Funding Picture 2023 /24



Ecologist (Rest. Advisors x2)

\$120,000

Greening of Kaipātiki

\$50,000

Reserves / Slip remediation

/ Migrant Groups / Volunteering -

\$23,600

Buffer

Kauri dieback and myrtle rust

Finance manager CCFG

Tools and Resources

\$273,194

Core staff and operations,

Greening of Kaipātiki and Schools

\$200,000

Funding Picture 2024 /25



Ecologist (Rest. Advisors x2)

\$0 confirmed

Greening of Kaipātiki

\$0 Confirmed

Making Ecology Count

\$26,000 Confirmed

BFA & Buffers

Kauri dieback and myrtle
rust

Finance manager CCFG

Tools & Resources

\$64,997 Confirmed

RENH pest plant role

Tools & Resources

\$0 Confirmed

Core staff and operations,

Greening of Kaipātiki and Schools

\$253,248 requested

Kaipātiki Local Board Funding Request

Items	Cost
Manager – Annie Project Lead – Tania Community Activator - Kelly	\$154,374
Operational expenses – staff support and building – keeping the lights on	\$20,814
Programme engagement – halos, supporting volunteer groups, events, incorporating Mātauranga Māori	\$28,940
Schools engagement – Angi and school specific resources	\$9,120
Greening of Kaipātiki Programme – Maisie and trees	\$40,000
Total	\$253,248



The cost of reduced funding

Reduced ability to tell stories about our efforts and impact as our comms person hours have been reduced.

In a year when we are focusing on deeper volunteer network and reserve group support and growth – reduced funding will impede this most vital part of us.

The future focused projects (mentioned earlier) are potentially huge innovative, collaborative advances for conservation in Tāmaki Makaurau – PFK are heading this and the KLB are our foundation.



Pest Free Kaipātiki Aspirations

- PFK is sustainable long term
- Forge ahead to facilitate better communications and increased efficiencies between council staff, contractors and reserve groups
- Continue to grow the momentum of learning and integration of Mātauranga Māori within PFK
- Continued growth in tree cover, volunteers, birds, community connections etc...
- Reduction in predators, pathogens and weeds - better tracked to tell story
- Engage the community in climate change mitigation actions
- Inspire our community to care



Kaipātiki - a place where community and the natural environment flourish



Ngā mihi nui.

**PEST FREE
KAIPĀTIKI**

#pestfreekaipatiki2025

Sponsored by

Kaipātiki
District Council

I'm a Kauri Hero
because...

I always scrub my shoes
and my pet's paws

I always use decontamination
stations

I always stick to the track

I teach my friends and
whānau about Kauri Hero