

Puketāpapa Urban Ngahere

Action Plan 2021





Contents

2	Introduction
10	The Whats, The Whys & The Whens
12	Tree Planting Principles
16	Partners
18	Goals
20	Objectives
24	Action Plans
30	References
32	Appendices

Introduction



Image 1: A playground in Puketāpapa

The Puketāpapa Urban Ngahere Action Plan is a positive step towards seeking to recognise and replenish Tāmaki Makaurau’s urban ngahere. It is the result of determined advocacy of the Puketāpapa Local Board, community groups and stakeholders.

We are proud to produce a localised urban ngahere action plan which is intended to deliver on Auckland Council’s *Urban Ngahere (Forest) Strategy*¹. We are also committed to enhance the urban ngahere and biodiversity in the *Becoming A Low Carbon Community Action Plan*².

We have developed the Puketāpapa Local Board Action Plan to connect our parks and open spaces. We will continue to explore planting opportunities through these corridors to increase biodiversity and will seek to encourage important community initiatives; such as native urban ngahere regeneration, pollinator paths and the planting of fruiting species.

The Puketāpapa Local Board supported the development of a canopy analysis report to address the pressures on the urban forest and loss of tree cover, and to meet the targets set in *Auckland’s Urban Ngahere Strategy*¹.

This strategy has a stated target to increase Tāmaki Makaurau’s tree canopy cover from a regional estimate of 18 per cent (as assessed in 2013) to 30 per cent by 2050. The strategy also states an aim of having at least 15 per cent tree canopy cover in every local board area within this timeframe. Given the above, it is clear that a coordinated approach to achieving the targets for both local board areas and region-wide is necessary.

With the extent of the urban ngahere in the Puketāpapa Local Board area having now been assessed, we understand the need for a large number of planting projects to be committed to in the short and medium term. This will ensure that a flourishing urban ngahere can continue to develop into the future. Extensive national and international urban ngahere studies are in agreement about the benefits that the “lungs of a city” can bring to its inhabitants.

There are numerous benefits associated with having, developing and maintaining a flourishing urban ngahere.

The *Auckland's Urban Forest Canopy Cover: State and Change (2013 – 2016/2018)* report states that the Puketāpapa Local Board area has 21 per cent canopy cover³; 6 per cent above the desired minimum local board target detailed in *Auckland's Urban Ngahere (Forest) Strategy*¹ – please refer to the Puketāpapa Local Board LiDAR urban tree map below.

With a significant percentage of the local board area's 'suburban' urban ngahere assessed as growing on private land (which is subject to little, if any, tree protection legislation, by-laws or policies), it is reasonable to assume that, since the data was last captured and with no coordinated tree planting plan in place, urban ngahere canopy coverage within the local board area will have declined.

There are many different influences that can impact on our local natural environment and commitment to a well-considered tree planting action plan is required. For the betterment of our collective urban ngahere, the local board is pleased to make such a commitment.

A coordinated action plan, along with an effective long-term maintenance regime and well considered tree protection legislation, by-laws or policies will go a long way towards protecting, enhancing and maintaining a vibrant and essential urban ngahere within the local board area.



Map 1: Local Board urban tree map - canopy cover by percentage based on 2013 LiDAR

Ngā painga o te ngahere ā-tāone o Tāmaki Makaurau

Benefits of Auckland's urban ngahere



Urban Ngahere Strategy

Objectives



Knowing

Tāmaki Makaurau needs to know the status of its urban ngahere, the extent, number, and distribution of trees as well as their size, health and condition. Understanding the social, environmental, economic, and cultural value of Tāmaki Makaurau's ngahere and quantifying the benefits it provides will support better informed, strategic decision making about its management and growth.



Growing

Tāmaki Makaurau needs to grow its urban ngahere to increase and amplify the benefits trees provide and to address the inequity of where the ngahere is distributed across the region. By expanding and enriching its urban ngahere, Tāmaki Makaurau will maximise the social, environmental, economic and cultural benefits that trees, shrubs and other vegetation bring to an urban environment.



Protecting

Protecting existing urban ngahere is crucial to safeguarding the added values and benefits larger mature trees provide. Caring for saplings is critical for ensuring older trees are replenished before the end of their life, ensures our urban ngahere grows over time and publicly-funded planting is successful.

Mechanisms



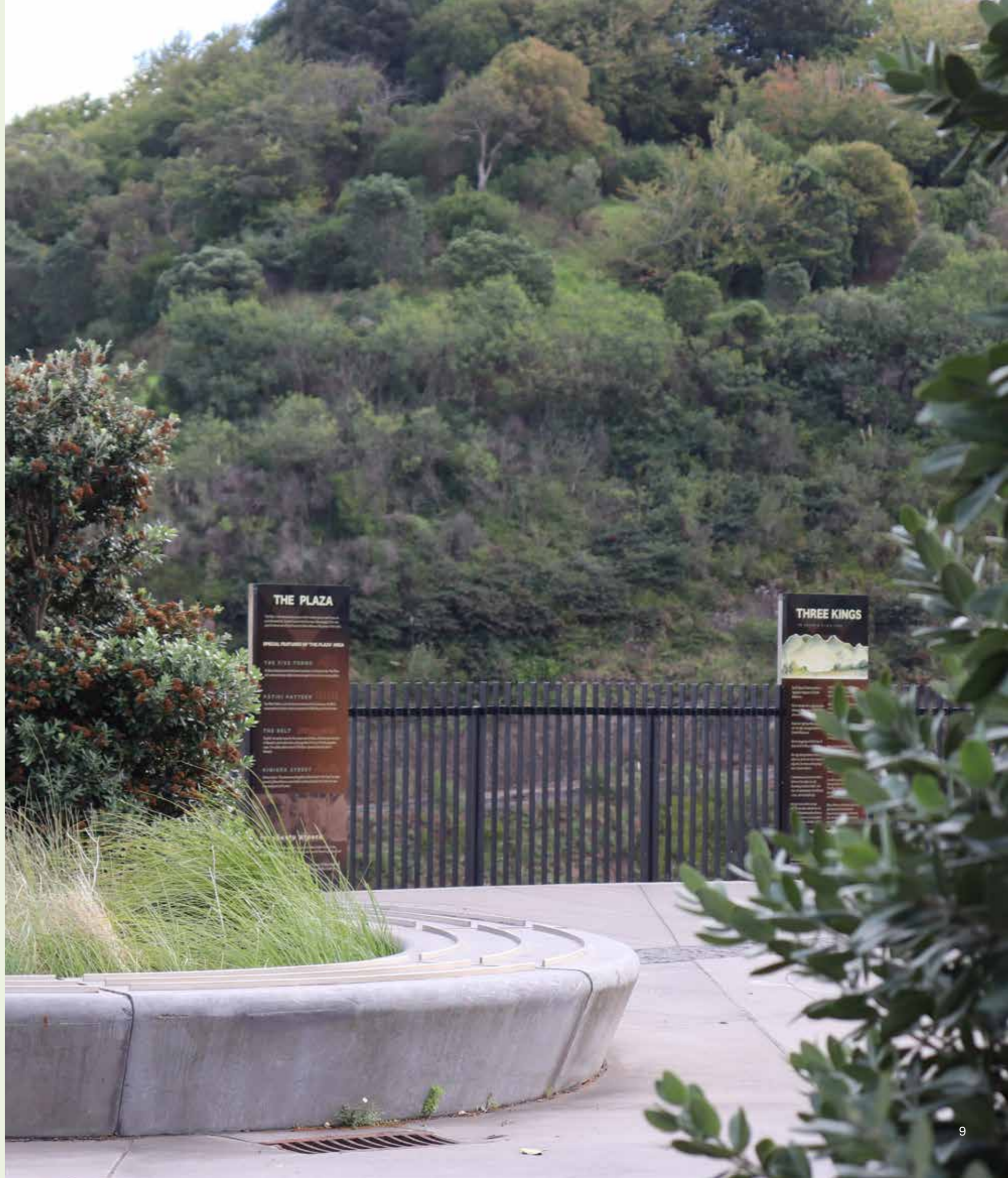
Engage

Engage with partners and stakeholders – with mana whenua, residents, private landowners, community organisations, network utility operators and the private sector to ensure the urban ngahere is well managed, its benefits are well recognised and that growing and protecting the urban ngahere on public and private land is widely supported.



Manage

Manage the city's urban ngahere on public land through coordinated planning, strategic planting and smart, innovative urban design while facilitating best practice standards for work on and around trees through vegetation maintenance contracts.



The Whats, The Whys & The Whens

What is an urban ngahere action plan?

Why is an urban ngahere action plan needed?

When does an urban ngahere action plan get implemented?

This section provides details and answers to the 'whats', the 'whys' and the 'whens' of an effective urban ngahere action plan.

The What

This urban ngahere action plan:

- Is a road map that spells out what steps are required in order to achieve the stated goals of the Puketāpapa Local Board as they relate to the urban ngahere within the local board area boundaries.
- Details objectives and actions that support the local board's urban ngahere protection, development and maintenance goals.

The Why

This urban ngahere action plan:

- Is needed as currently there is no coherent tree planting plan to support the promotion, protection and enhancement of the urban ngahere within the boundaries of the local board area.
- Is required as a recent high level assessment has identified tree canopy cover loss throughout the local board area.
- Is necessary as a high level assessment of the current tree stock within the local board boundaries revealed vulnerabilities in the age spread, condition, species range and longevity of the existing tree canopy cover.

The When

This urban ngahere action plan:

- Outlines the requirements necessary to undertake to develop a ten year tree planting plan.
- Provides timeframes per key actions that support the goals and objectives of the Puketāpapa Urban Ngahere Action Plan.

Tree Planting Principles



With the Puketāpapa Local Board area bordering the Manukau Harbour coastline, the presence of the motorway and the suburbs containing intensive residential lots; a range of planting principles are required in order to establish new plantings that contribute long term to the board's overall urban ngahere canopy cover.

Examples of relevant tree planting principles are: planting the right tree in the right place; having a preference for native species; ensuring urban ngahere diversity; creating ecological corridors and connections; and seeking to manage the whole lifecycle of urban trees.

Tree planting principles are to be developed in a manner that address a range of issues (some being specific to the Puketāpapa Local Board area) such as:

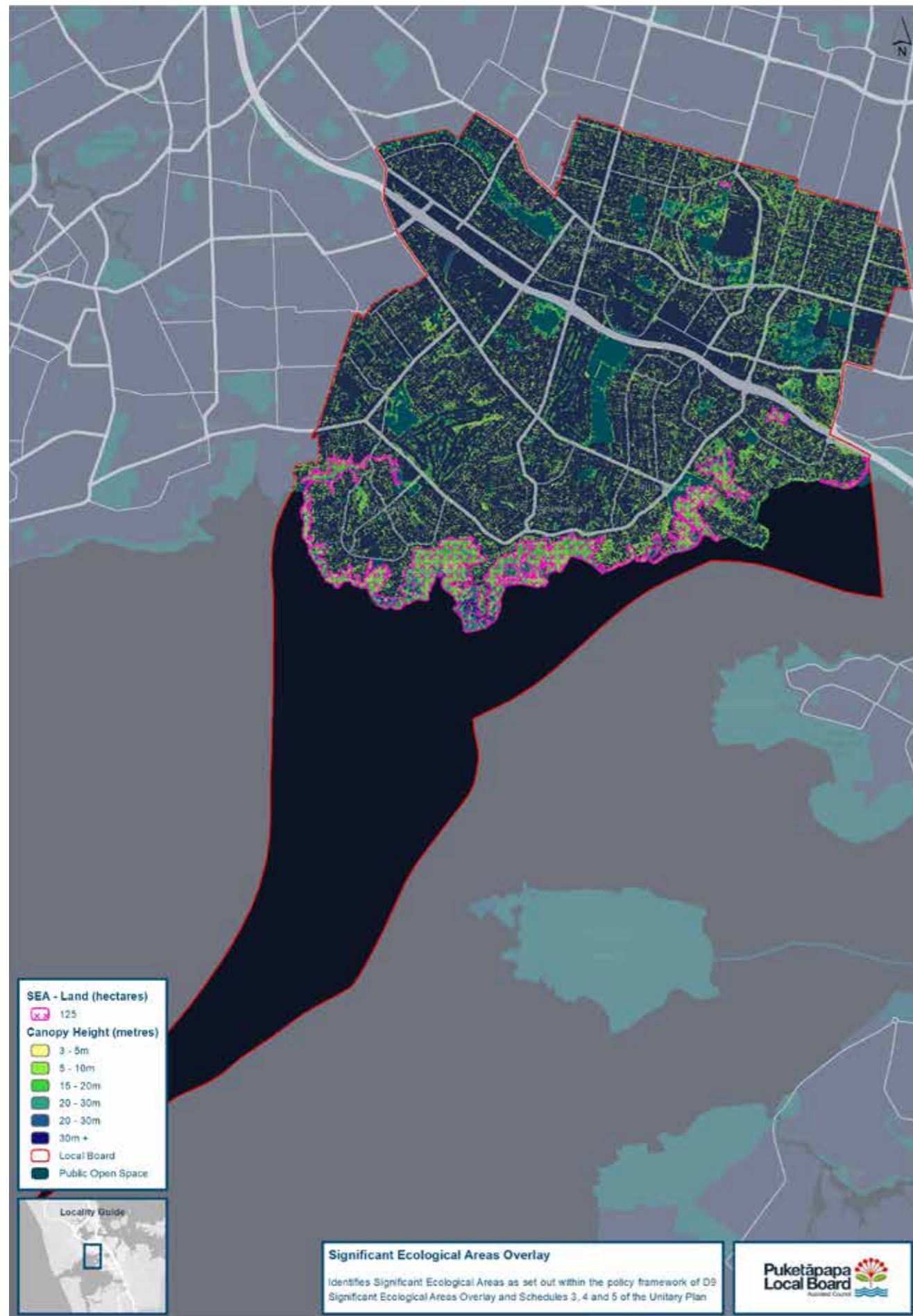
- Salt tolerance
- Soil type
- Structural form
- Plant large where we can
- Heritage context
- Climate change species susceptibility/ effects resilience
- Availability of space above and below ground
- Shading
- Leaf drop
- Future sight and view lines
- Visual amenity
- Infrastructure conflict
- Private property planting opportunities/assistance
- Pest and disease resistance
- Maintenance requirements
- Increasing biodiversity
- Bird and wildlife corridor creation/ enhancement/linkages
- Have a well-proportioned mix of saplings, semi mature and mature trees across the area
- A species composition of 70 per cent native species and 30 per cent exotic species. The exotic species breakdown is as follows; 10 per cent fruit-producing species, 10 per cent species with functional uses (i.e. carbon sequesters, ecosystem services) and 10 per cent exotic species with cultural significance.

When selecting species of trees, the tree planting principles are to be supported by the Auckland Council *Indigenous Terrestrial and Wetland Ecosystems of Auckland*⁴ (published 2017) report³. This document identifies species that are part of the various terrestrial and wetland ecosystems (and their variants) that have been located through Tāmaki Makaurau boundaries.

It is important to consider the extension of or creation of pollinator paths to help create corridors for birds, and insects to move along. Selecting tree varieties that provide flower sources for birds and insects are important to help build pathways for movement and to build the extent of habitat to support increased biodiversity at a local street and park scale.

Consideration is to be given to large trees that provide a diverse food source and habitat for native birds, as well as the maintenance of tall tree stumps that could provide nesting opportunities for birds.

Where appropriate, adopting the strategic principle of 'native first' when seeking to plant with appropriate species in ecologically relevant locations will assist in the enhancement of biological diversity, as well as aiding in ecological restoration.



Map 2: SEA and urban forest cover (based on 2013 LiDAR)

The effectiveness of individual species to remove carbon dioxide from the atmosphere and store it as carbon as part of their overall biomass over their lifetime is considered to be an important tree planting principle.

Planting platforms and opportunities can be found in the body of this report, for example:

- High level 'Suburb By Suburb Planting Opportunities'
- Survey Map; SEA and urban ngahere cover (based on the 2013 LiDAR)

When it comes to identifying planting locations and options, there are a wide range of opportunities, to consider:

- Auckland Council sports fields, parks and reserves (i.e. Margaret Griffen Park; a large expanse of land with some tall trees that could accommodate more trees)
- Auckland Transport land (i.e. grass berms, footpath tree pits, kerb build-outs, car parking spaces, new street gardens)
- Public cemeteries could look at using trees for memorial plantings
- Land owned by the Ministry of Education
- NZTA land
- Large planters along cycle lanes

- Future open space programmes and projects
- Community Facilities renewal program (during assessment of seating areas, playgrounds and rest areas) annually records the opportunity to plant new trees as part of the renewal upgrade to existing assets
- Green walls (i.e. amenity plantings that can be installed in planters/on fencing/on wires attached to sides of public/commercial buildings)
- Privately owned land (as planting in public spaces alone will not be able to achieve the desired canopy cover change. Refer to *Auckland's Urban Ngahere (Forest) Strategy*.

Where possible, consideration of planting large grade specimens helps ensure we get 'larger trees faster' so as to give rise to the urban ngahere benefits sooner.

Planting with a variety of species is particularly important when addressing resilience issues such as pest and disease, and climate change species vulnerabilities. A small species range could get decimated by a pest and/or disease infestation (i.e. Dutch Elm Disease and Kauri Dieback), just as a cooler, dryer climate-loving species may suffer in the predicted warmer and more moist seasons that Tāmaki Makaurau is likely to face in the future.

We will work with the community, Auckland Council, Ministry for Primary Industries and iwi to isolate incidents, prevent further spread of pest trees, educate and plant a diversity of tree species that are resilient to current disease to ensure the survival of our urban ngahere.

Of equal importance is ensuring that we address 'Seed to Succession' issues, with a focus on 'end of useful life' timing (as Kew Gardens in the UK found out in the 1987 storm, when they lost a large number of over-mature specimens and did not have sufficient middle age trees to carry them through), as well as providing bird and wildlife corridor creation and enhancement, along with linking Significant Ecological Areas (SEAs).

A combination of the above will ensure that, by introducing and maintaining a wide range of tree species, sizes and ages, a future healthy, vibrant and benefit-producing urban ngahere will be present for many years to come.

As stated in *Auckland's Urban Ngahere (Forest) Strategy*¹ – 'Together, growing Tāmaki Makaurau's urban ngahere for a flourishing future.'

Partners

The results of this urban ngahere action plan will benefit not only the residents of the Puketāpapa Local Board area but also Tāmaki Makaurau's community as a whole. Given this fact and the very relatable nature of planting a tree, creation of a viable and sustainable network of partners who can provide support in a myriad of ways is important; so much so that it is listed as one of the goals of this plan.

Examples of those entities who could partner in the deliverables of this plan are:

- All local community groups that undertake work in the Puketāpapa Local Board area
- Local school/community groups to operate eco-sourced nurseries
- Private land owners (possible for Auckland Council to fund the planting of trees on private properties)
- Commercial land owners (possible to install climbing green walls on/up sides of privately-owned buildings where trees can't be established)
- Auckland Council's Community Facilities department (by engaging with and supporting the renewals programme, create new planting locations by undertaking the removal of noxious trees/plants)
- Auckland Transport (engage with the maintenance programme i.e. retire hard stands to create new planting spaces)
- Healthy Waters (engage with the revegetation program, assist in the creation of educational rain gardens)
- Network Utility Operators (engage regarding planting location restrictions around network assets, support Vector's Overhead Improvement Program)
- Work with Panuku and Auckland Unlimited to develop and incorporate new planting opportunities within their new development and facility maintenance projects
- National environmental entities (Forest and Bird, Project Crimson, Trees That Count)
- Nursery Association (gain support by way of quality production donation/price reduction)
- Government departments (opportunity to plant large trees for shading benefits in schools and hospitals, support from Department of Corrections to grow seedlings)
- NZTA (discuss species used in motorway plantings and their future long term protection and explore planting opportunities on surplus land)



Goals

Knowing, Growing, Protecting.

The goals of the Puketāpapa Local Board in relation to the assessment, protection, management and development of the urban ngahere within the local board area are as follows:

- To create sustainable urban ngahere within the local board area that meets the needs of our community and surroundings
- To achieve a minimum 15 per cent tree canopy cover across all suburbs in Puketāpapa Local Board. To focus future tree planting efforts on suburbs that have a canopy coverage that is less than 15 per cent
- To achieve 30 per cent tree canopy cover within the local board area boundaries by 2050
- To further enhance and amplify efforts to establish corridors of vegetation to link small and large open space areas
- To increase public awareness around the need to promote, protect and enhance the urban ngahere within the local board area
- To create a network of partners to support the development and maintenance of the urban ngahere within the local board area



Objectives



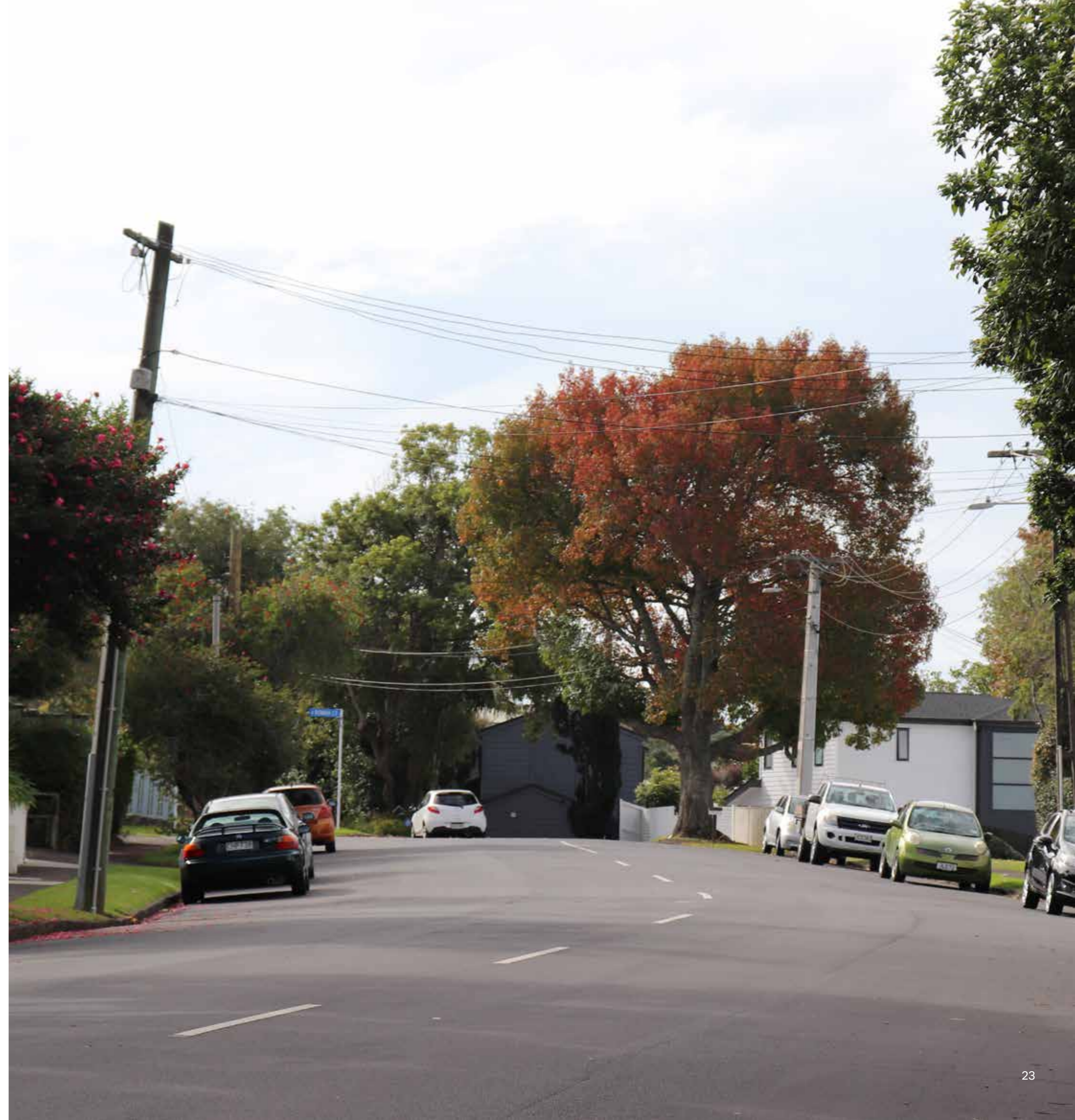
Knowing, Growing, Protecting.

In order to achieve the Puketāpapa Local Board's goals in relation to the assessment, protection, management and development of the urban ngahere within the local board area, the following objectives are required to be undertaken:

- Research and compile a list of planting opportunities within the road reserve, parks and reserves, and commercial environments within the Puketāpapa Local Board area
- Develop a suitable species list of small, medium and large trees to be used in the identified list of planting opportunities
- Develop an urban ngahere tree planting promotional program that engages stakeholders and partners
- Review and set up an accurate tracking system of Auckland Council's tree planting and maintenance practices
- Auckland Council Call Centre can be contacted on (09 301 0101 or via the council website www.aucklandcouncil.govt.nz. They can log maintenance requests to attend to newly planted trees, to review a site for a replacement tree planting, and to request that a new tree is planted
- Develop a 10 Year Tree Planting Plan
- Engage with tree nursery suppliers and develop a nursery 'Growing Plan' that will service the 10 Year Tree Planting Plan
- Provide a report to the local board that outlines the financial requirements to support the funding commitments of the 10 Year Tree Planting Plan
- Continue discussions with Auckland Council regarding current levels of tree protection rules and their effectiveness as they relate to the protection and enhancement of the urban ngahere
- Council's Governing Body has commenced discussions with Central Government to highlight the need for change to the Resource Management Act to enable new or better rules to protect large trees of importance in Tāmaki Makaurau
- Work with Auckland Council and the Puketāpapa Local Board to collaboratively explore the development of an advisory service for tree care to help provide advice to customers on tree care and maintenance. Promote the value of professional tree care and work with national organisation to develop advisory service

By implementing these objectives, and in line with the stated goals, this urban ngahere action plan intends to ensure that:

- We will engage and work with mana whenua to restore the urban ngahere on public land in the Puketāpapa Local Board area
- We engage with all stakeholders, partners, schools and local community groups to seek support regarding the planting and maintenance of future urban ngahere plantings
- The right trees will be planted in the right places
- The tree supply and planting works will be cost effective
- We arrange annual tree planting events
- We explore the options for setting up a tree fund to help with maintenance of large notable trees in the local board area



Action Plans

Introduction

Tree planting 'Action Plans' will be developed to deliver on the planting aspirations of the Puketāpapa Local Board. This will involve site-specific assessments and consultation about planting opportunities that exist within the board's boundaries. New tree planting will assist with the local board's efforts on adaptation and mitigation measures to help respond to climate change by positively leveraging efforts to "become a low carbon community" and implement the Action Plan.

To undertake the required activities that support the delivery of the Action Plans, the following matters will be considered and implemented:

Action

- Undertake a detailed assessment of planting opportunities within the Puketāpapa Local Board area's road reserves, parks and reserves, and commercial environments. The assessment will involve consideration of any opportunities that exist in the work program to plant more trees as part of the continued development of the Puketāpapa 'active transport' network of walking and cycling track network (outlined in the *Puketāpapa Local Board Plan 2017*)
- In accordance with the principles outlined in *Auckland's Urban Ngahere (Forest) Strategy*¹, research and compile a 'suitable species list' and 'tree planting principles' that will apply to all identified planting opportunities
- Develop a detailed 'Planting Opportunities List' that will help to deliver the goal of providing 30 per cent of tree canopy cover within the Puketāpapa local board area by 2050
- Develop a 1 - 3, a 4 - 6 and a 7 - 10 Year Funding Framework to deliver on the 'Planting Opportunities List'
- Record metrics that reflect estimated tree canopy cover percentage increase across the local board area post completion of all identified planting opportunities, as well as the estimated growth of existing trees up to 2050



Education

- Research, engage and enrol tree nursery suppliers regarding tree stock production standards, current stock availability and species selection for future plantings
- Undertake an assessment regarding the necessity for effective tree protection to support the long term protection, management and development of the urban ngahere
- Develop a promotional program that engages with identified stakeholders, partners and the wider public

Planting

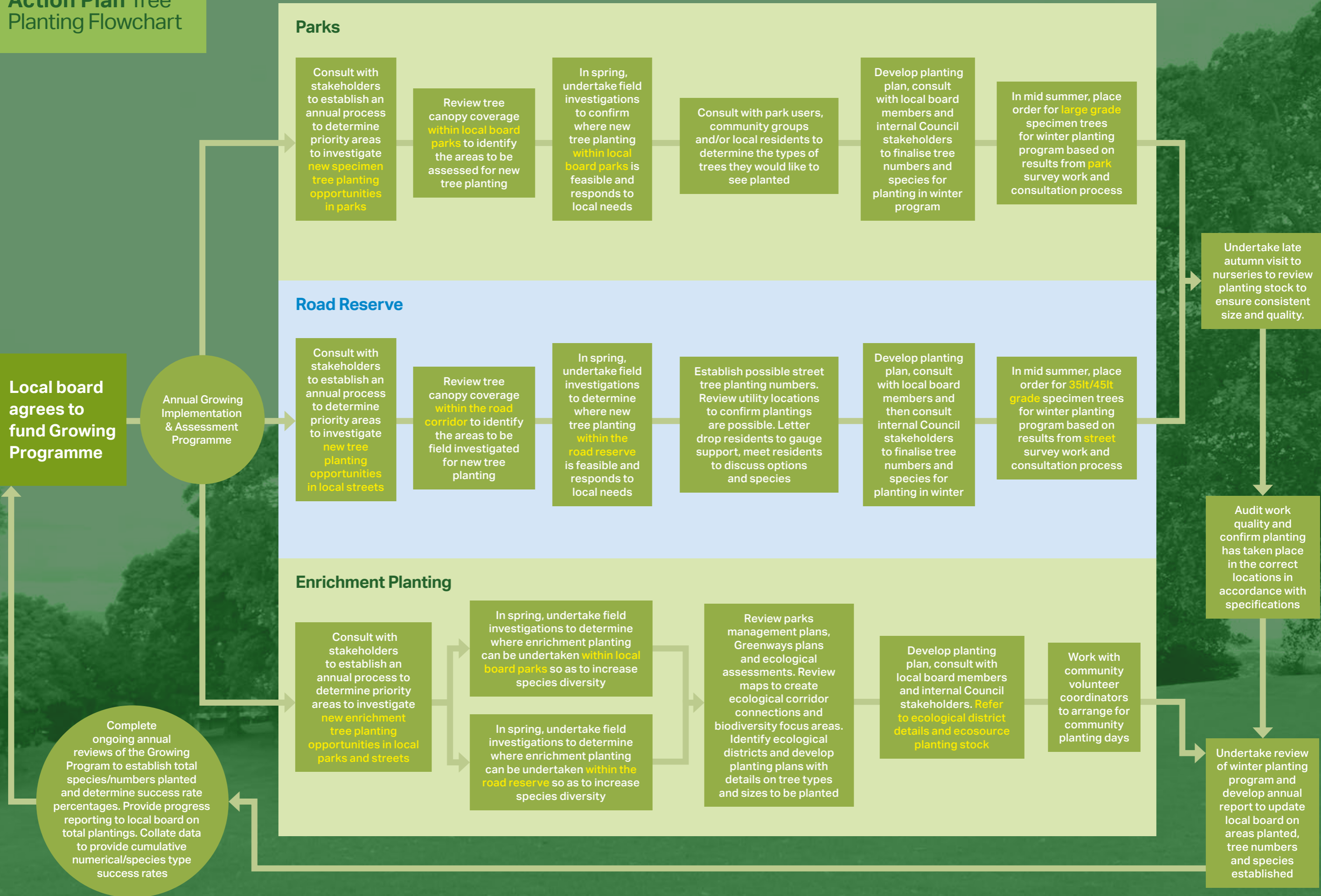
- Compile indicative tree supply and planting pricing (that includes 3 years post-planting maintenance, metrics assessments and reporting) to deliver on the 'Planting Opportunities List'
- Consider planting opportunities that include tree species that provide flowers, nectar and fruit to help support biodiversity
- Discuss and confirm best practice tree planting and ongoing maintenance methods with Auckland Council's Community Facilities department

Community Support

- Immediately post adoption of the Action Plan, implement Year 1 of the 10 Year Tree Planting Plan
- Encourage and support volunteers in the community to be enabled to support the growth of the urban ngahere, working with contractors and local volunteer groups to deliver outcomes, e.g. through community grants
- Investigate opportunity to establish an annual resident scheme which would allow residents to nominate heritage and notable trees in the local board area
- Investigate opportunity to establish a contestable fund that would support private property owners to maintain large heritage and notable trees in their private property, enhancing bio- diversity in the local board area
- Investigate opportunities to establish an initiative that would provide the local board with a platform to acknowledge individuals for their contributions to making reserves and private properties pest plant free



Action Plan Tree Planting Flowchart



References



Image 2: Yarn bombing on a tree next to a local library box.

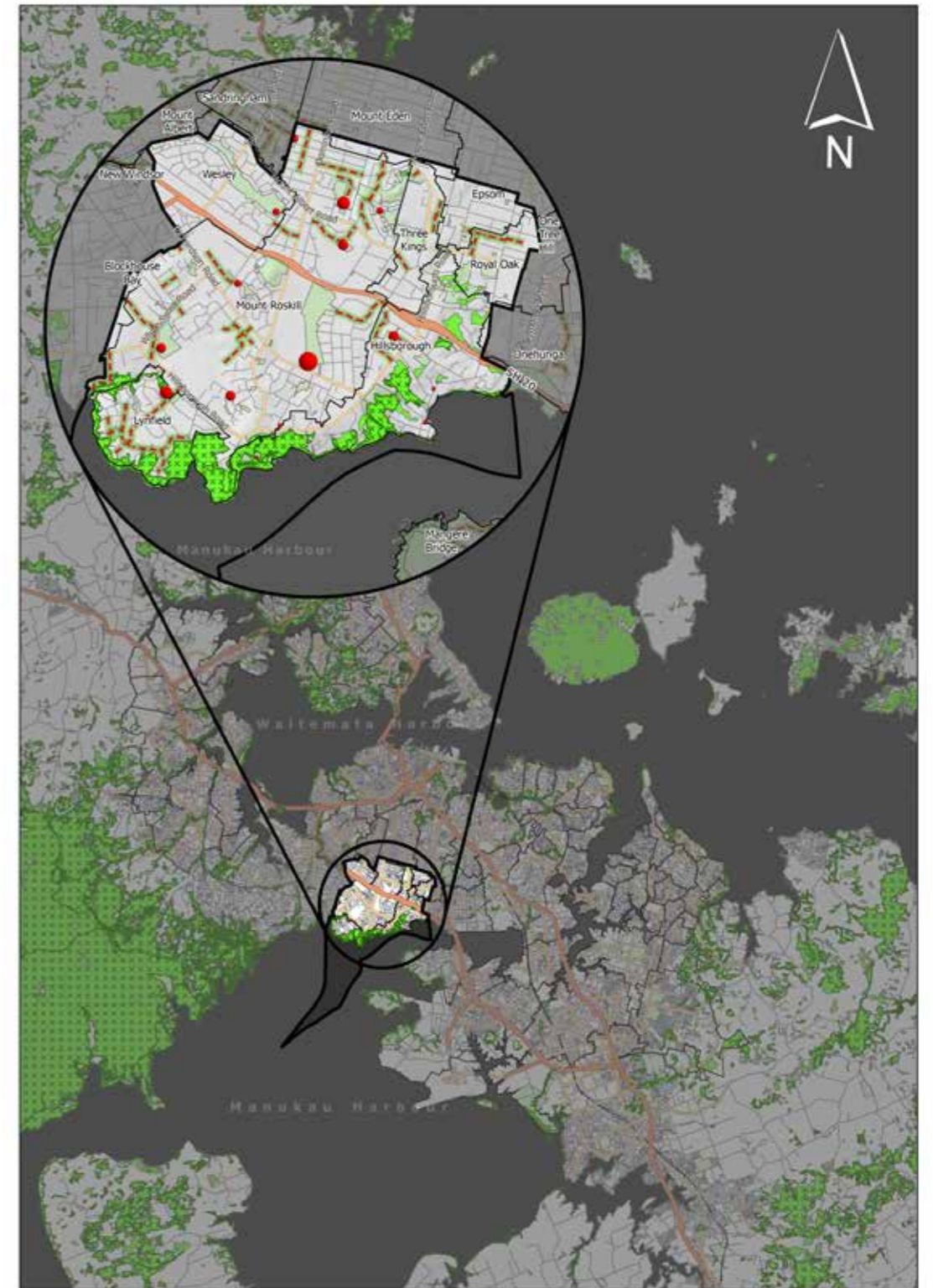
1. Auckland Council Research and Evaluation Unit. (2019, March). *Auckland's Urban Ngahere (Forest) Strategy*. <https://www.aucklandcouncil.govt.nz/plans-projects-policies-reports-bylaws/ourplans-strategies/topic-based-plansstrategies/environmental-plansstrategies/documents/urban-ngahere-forest-strategy.pdf>
2. Auckland Council. (2017). *Becoming a Low Carbon Community - An Action Plan*. <https://ourauckland.aucklandcouncil.govt.nz/media/18421/puketapapa-becoming-a-low-carbon-community.pdf>
3. Golubiewski, N., Lawrence, G., Zhao, J., & Bishop, C. (2020). *Auckland's Urban Forest Canopy Cover: State and Change (2013-2016/2018)*. <https://www.knowledgeauckland.org.nz/publications/auckland-surban-forest-canopy-cover-state-and-change-2013-20162018/>
4. Singers, N. J., Osborne, B., Lovegrove, T., Jamieson, A., Boow, J., Sawyer, J. W. D., & Webb, C. (2017). *Indigenous terrestrial and wetland ecosystems of Auckland*. Auckland Council, Te Kaunihera o Tāmaki Makaurau.
5. Auckland Council. (2017). *Puketāpapa Local Board Plan 2017*. <https://www.aucklandcouncil.govt.nz/about-auckland-council/howauckland-council-works/local-boards/all-local-boards/documents/puketapapa-local-board-plan-2017.pdf>

Auckland Council. (2019). *Local Development Initiative - Ngahere Work Programme. Year 1: Knowing Phase. Urban Ngahere (Forest) Analysis Report September 2019*.

Wilcox, M. D. (2012). *Auckland's Remarkable Urban Forest*. Auckland Botanical Society.

Appendices

Potential Tree Planting Opportunities



Map 3: Puketāpapa Local Board area.

Surveying and Data Collection

As outlined in the Action Plan Tree Planting Flowchart, further detailed site investigations are required to be undertaken so as to confirm suitability of potential planting locations. These site investigations involve a variety of issues i.e. consultation with all relevant stakeholders, presence of underground services, visual amenity issues, plant species selection, future growth, form and site suitability.

As part of the development of the Action Plan's structure of how to investigate potential tree planting opportunities, in the initial trial phase relating to site investigations, it was decided to prioritise ground-truthing surveys (information provided by direct observation) via a clear purpose to better utilise the available time and resources. A spreadsheet of Council parks and reserves which contained variable site characteristics (including land use and tree cover) was provided to assist in developing a list of sites in which to undertake the initial investigations. As specified in the Local Board Plan, parks and reserves were prioritised for potential tree planting investigations and were selected using the following criteria;

1. Is there a playground within the park or reserve?
2. Is the park or reserve's overall tree cover less than 10 per cent?
3. Is there shade from existing trees casting over the playground?

Presence of playgrounds was selected as the main priority target in the initial survey, as increased planting and tree cover in these areas would likely provide measurable social and environmental benefits to local communities enabling connections to nature. As the first priority, parks and reserves were assessed on the basis of the presence of a playground; these locations were then filtered further by percentage of tree cover, with parks and reserves containing 0-15 per cent canopy cover selected next. A desktop review using aerial imagery, site observations and comments detailed in current, relevant Council data was further assessed to determine whether trees within the selected parks and reserves shaded playgrounds, with a corresponding list of these sites then compiled for each local board.

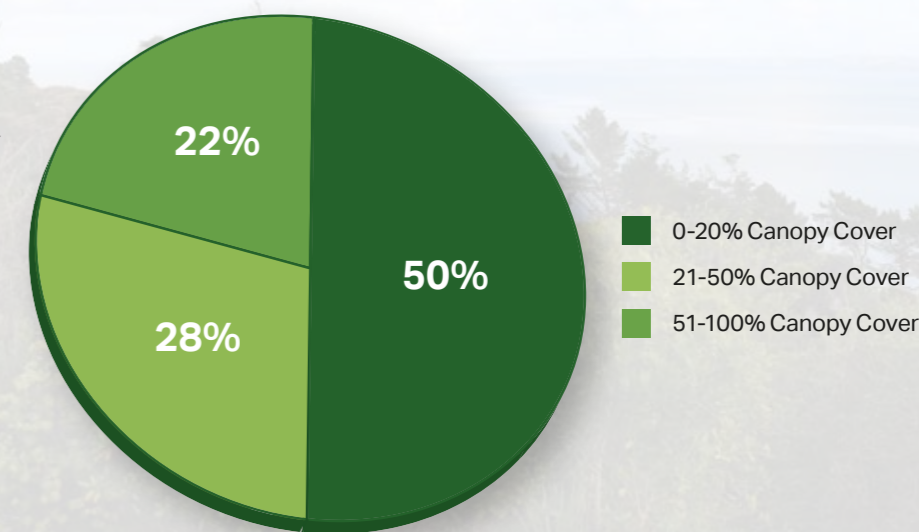
Ground-truthing was used to determine the extent of tree cover and whether new plantings had been provided that were not visible on aerial imagery. Surveys were expanded once on site to determine if more trees could be planted within the parks and reserves outside of the immediate vicinity of the playground footprint to include open areas, park edges, etc. Site observations during ground-truthing identified the need for more trees, especially on hot sunny days when park users' crowded within the shaded areas provided by tree canopy cover. Further reviews, investigations and ground-truthing would be required

to identify additional parks and reserves that have no playgrounds and low canopy cover.

Road reserve selection and street tree planting followed a separate assessment. The street tree ground-truthing followed the parks and reserves site surveys; streets were selected based on connectivity to parks and reserves previously identified, as well as connectivity to ecological areas such as coastal environments and stands of native vegetation or SEAs. A further desktop assessment based on 2013 LiDAR data for canopy cover identified streets where canopy cover was low and streets where berm planting was feasible from an aerial imagery perspective. Connectivity was the priority for streets; ground-truthing was used to identify streets where canopy cover was low to non-existent and therefore required berm planting, and, when canopy cover was present, whether infill planting was possible.

Canopy Cover of all Puketāpapa Parks with Playgrounds

Graph 1: Percentage canopy cover of Puketāpapa playgrounds



Puketāpapa Planting Opportunities

Graph 2: Puketāpapa planting opportunities for playgrounds, parks and road reserves.



a) On-Site Data Capture Survey Form

My Survey

Survey Staff

Date: Wednesday, 19 August 2020 11:30 AM

Local Board:

- Henderson Massey
- Hibiscus & Bays
- Kaipatiki
- Upper Harbour
- Mangere-Otahuhu
- Meungakeikei-Tamaki
- Howick
- Otara-Papatoetoe
- Albert-Eden
- Orakei
- Puketapapa

Location *

Site

Planting Location:

- Street Tree
- Park Tree

Street Name

Street Number

Planting Priority:

- 1 = High priority (no trees)
- 2 = Medium priority (additional plantings)
- 3 = Low priority (infill plantings)

Street Characteristics:

- Berm
- Footpath
- Planter
- Traffic Island
- Bus Stop
- Near Intersection

Infrastructure:

- Overhead Lines
- Power Pole
- Hydrant
- Water Meter
- Valve
- Telecom
- Plinth
- Gas
- Catch Pit
- Manhole
- Lighting
- Signage
- Vehicle Crossing
- Other

Comments

My Survey

Site

Planting Location:

- Street Tree
- Park Tree

Park Name

Planting Priority:

- 1 = High priority (no trees/playground, no trees)
- 2 = Medium priority (additional plantings)
- 3 = Low priority (infill plantings)

Park Characteristics:

- SEA
- Native Plantings
- Specimen Trees
- Gardens

Comments

Infrastructure:

- Manhole
- Lighting
- Signage
- Seating
- Playground
- Other

Comments

Site Characteristics:

- Flat
- Bank
- Slope
- Ridge
- Gully
- Swale
- Stream
- Wetland
- Insufficient Root Volume
- Grade Change (+)
- Grade Change (-)
- Moisture Retentive
- Moisture Deficit
- Permeable
- Impermeable
- Irrigation
- Compacted
- Clay

Comments

Possible Species (Botanical name)

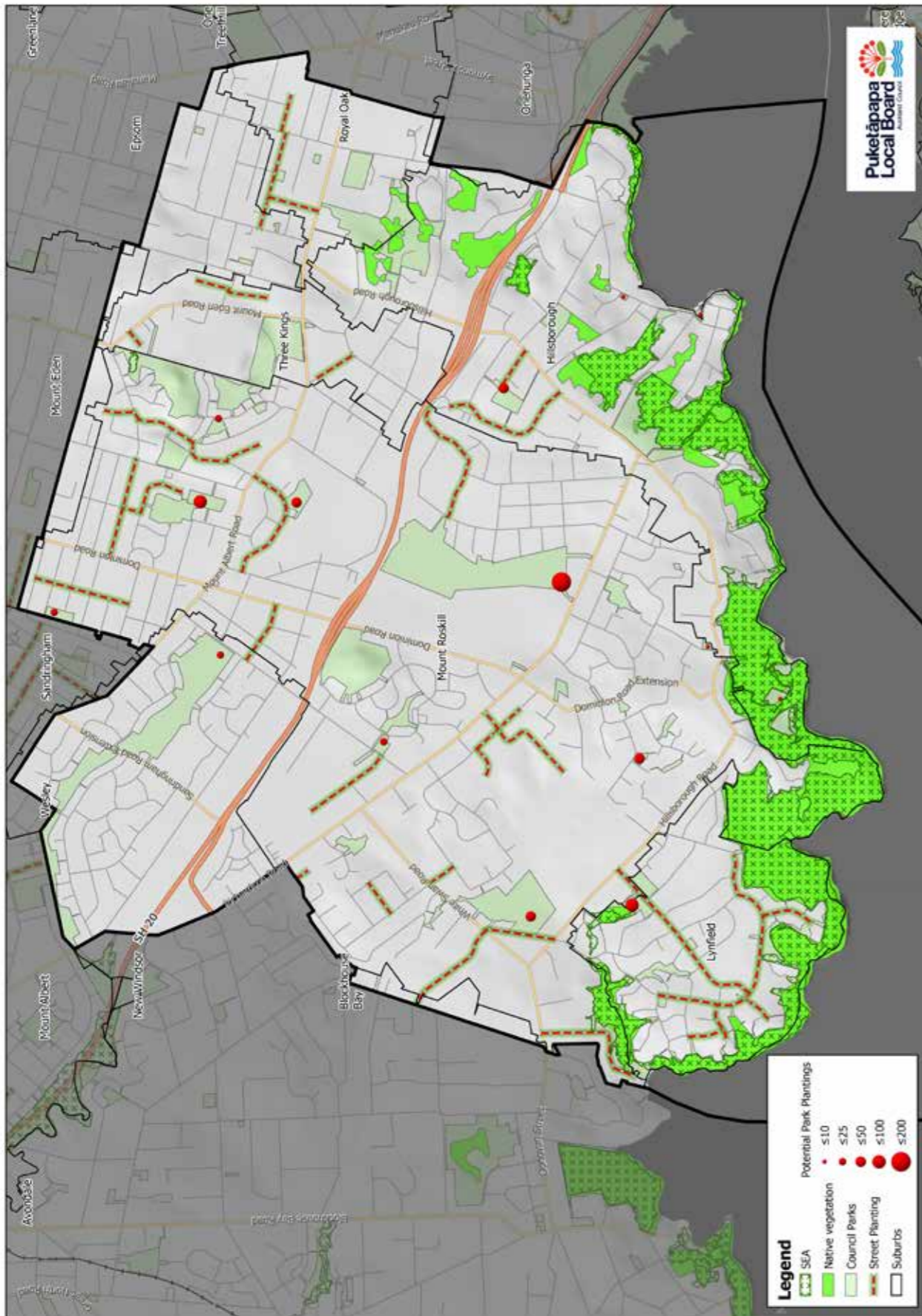
Number of Trees *

Comments

Site Photo

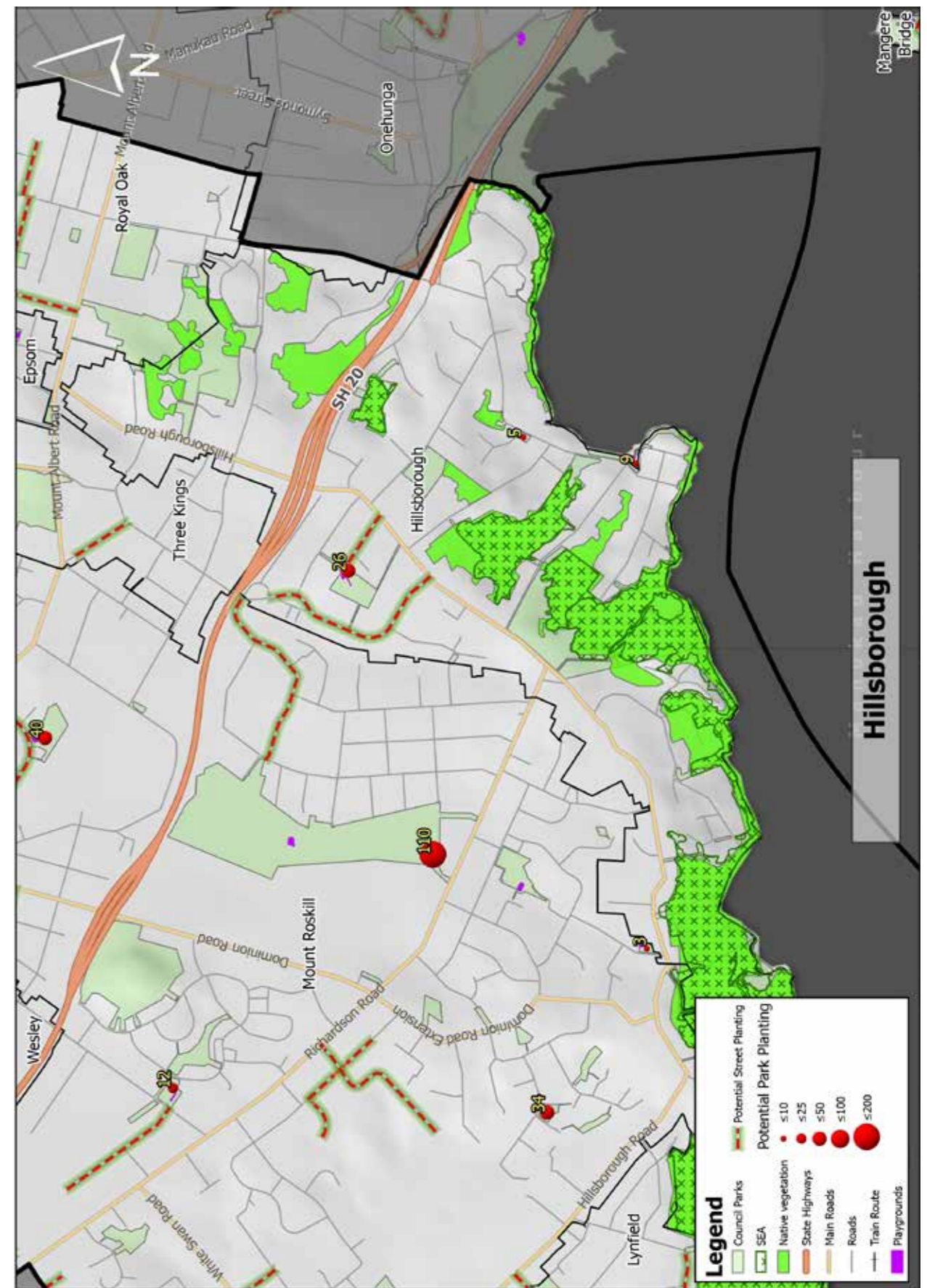


b) Puketāpapa Tree Planting Opportunities Map

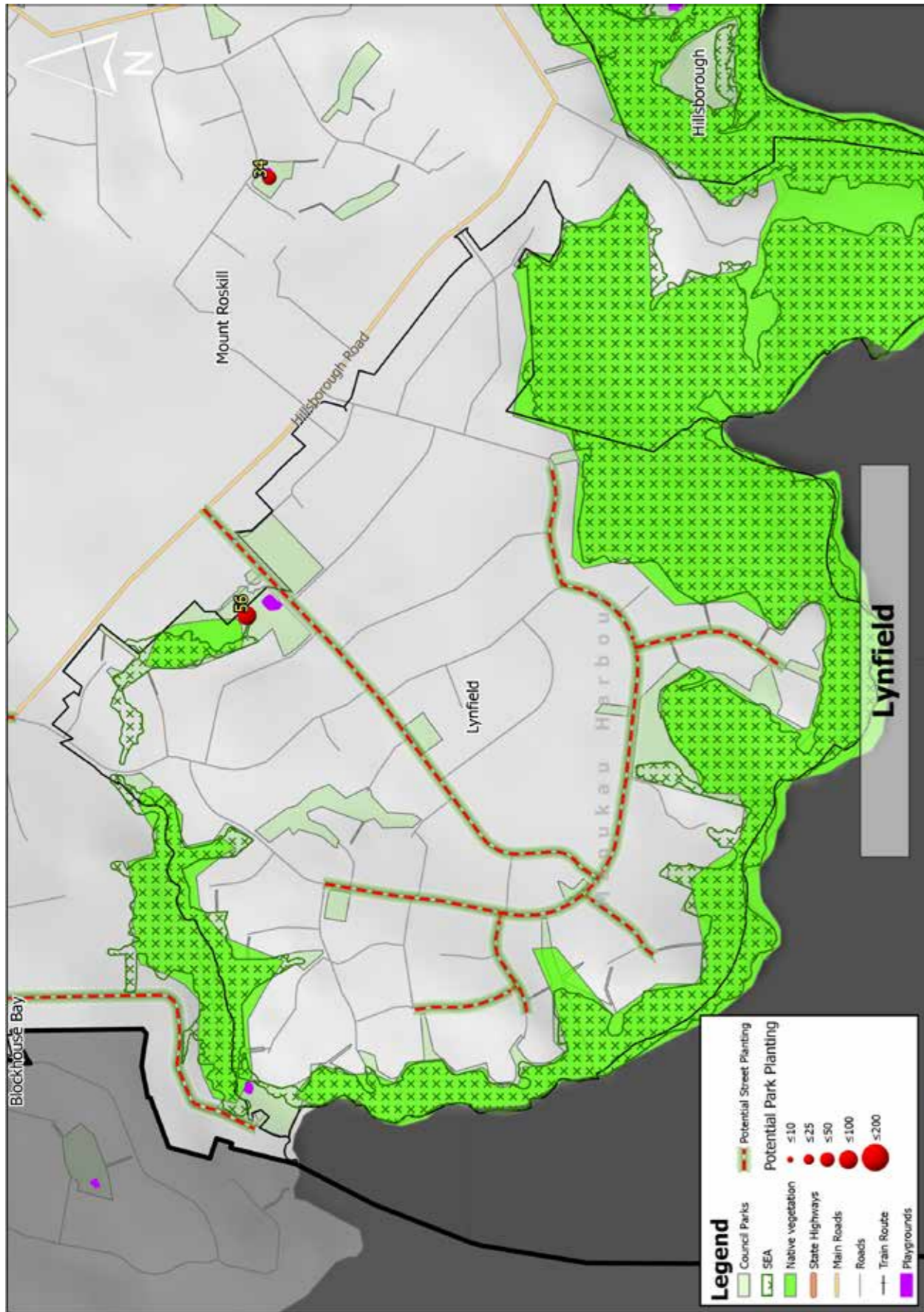


Map 4: Planting opportunity locations for the Puketāpapa Local Board area

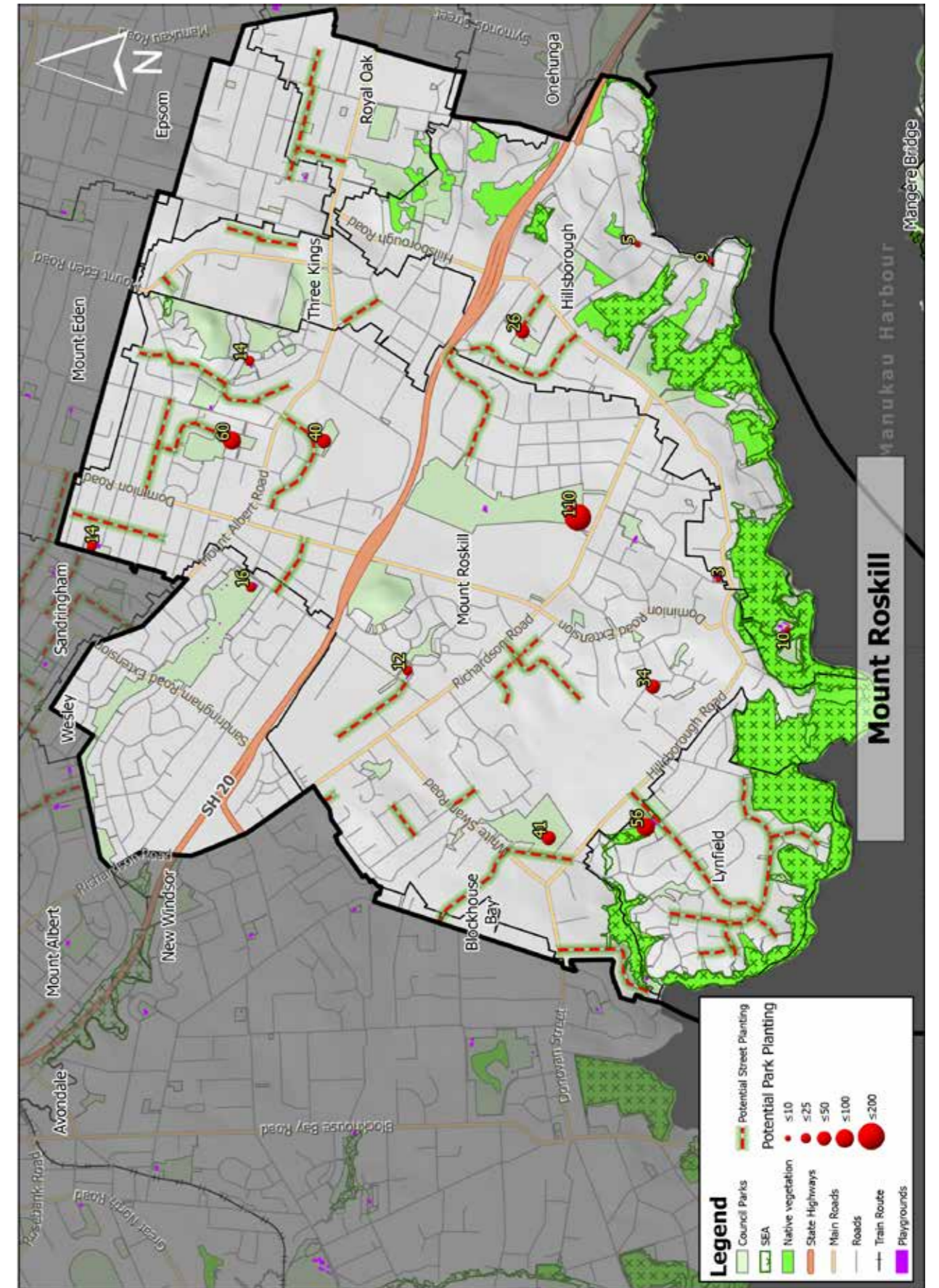
c) Suburb by Suburb Tree Planting Opportunities



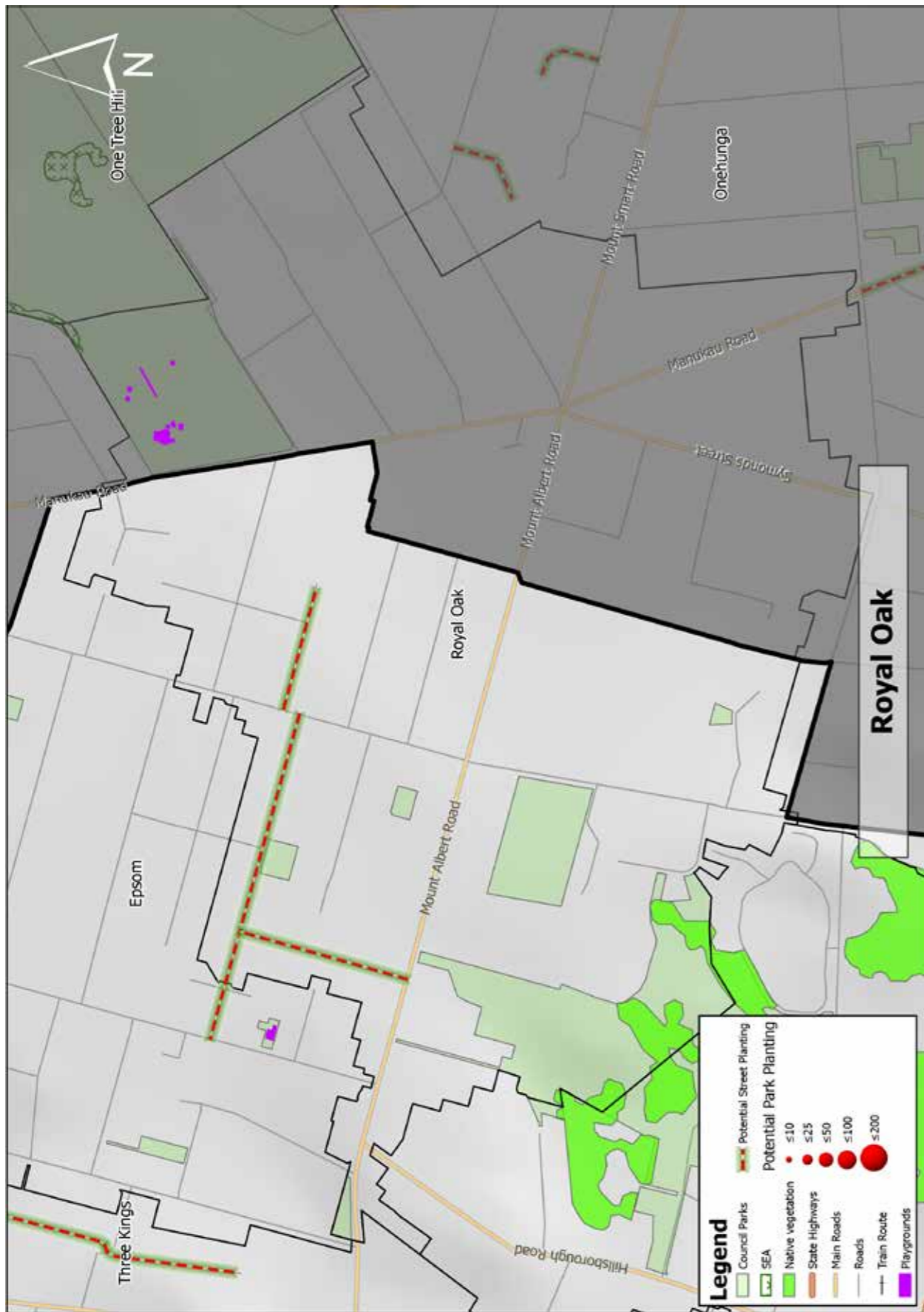
c) Suburb by Suburb
Tree Planting Opportunities (continued)



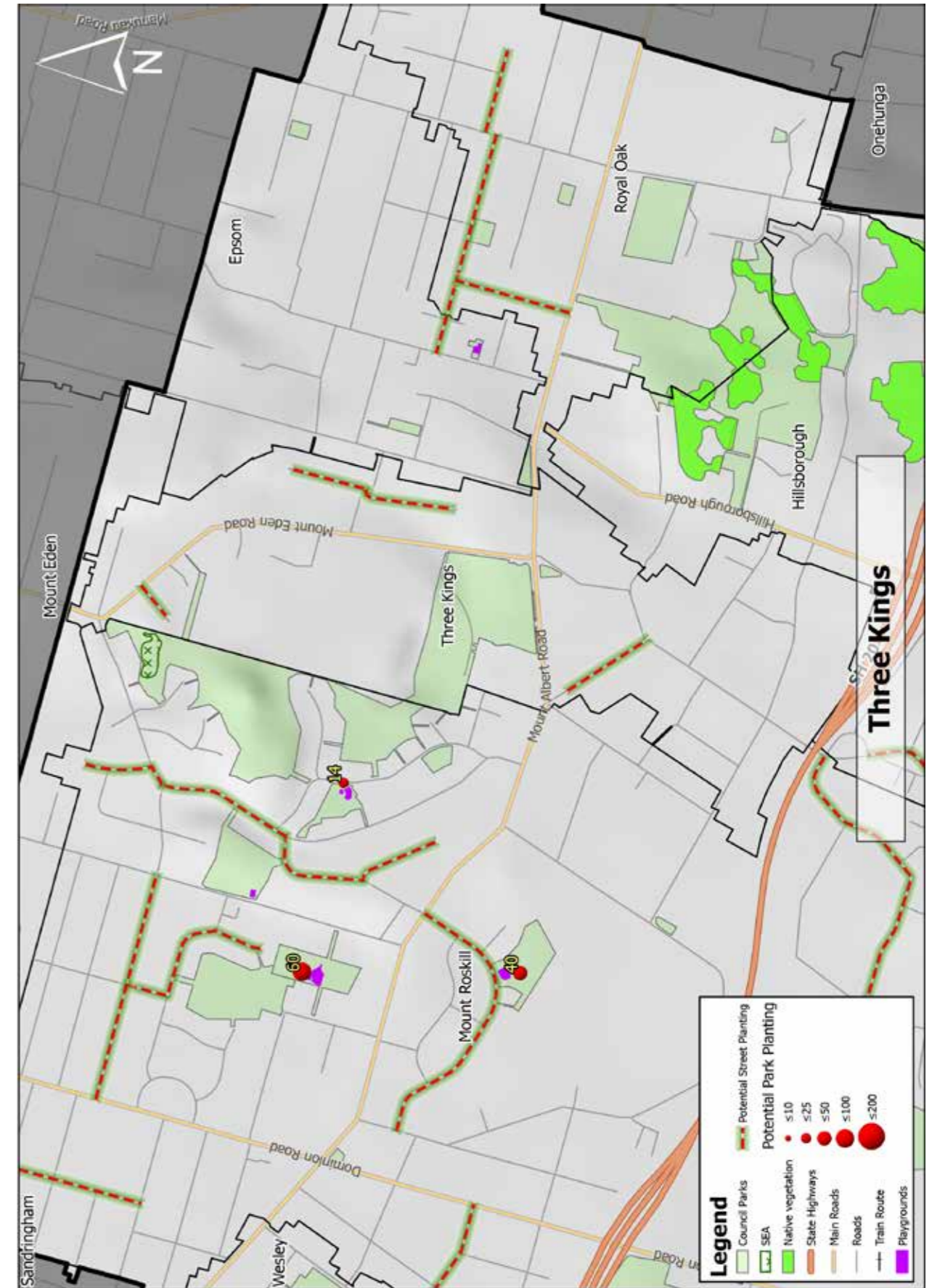
c) Suburb by Suburb
Tree Planting Opportunities (continued)



c) Suburb by Suburb
Tree Planting Opportunities (continued)



c) Suburb by Suburb
Tree Planting Opportunities (continued)



d) Puketāpapa Park and Street Tree Planting Opportunities'

The following tables detail the total number of planting opportunities within parks with playgrounds, along with possible planting sites within the road reserve.

In respect to recommended species to be planted within parks with playgrounds, this determination will occur when site-specific assessments are being undertaken. The tree species detailed in the 'Streets' table are a recommendation based on surrounding existing plantings.

Parks/Playgrounds Planting Opportunities

Name	Plantings Around Playgrounds	Plantings Throughout Park
Arthur Faulkner Reserve	5	9
Buckley Road Reserve	0	0
Fearon Park	10	50
John Moore Reserve	8	32
Keith Hay Park	18	92
Lynfield Reserve	8	48
Margaret Griffen Park	8	33
May Road War Memorial Park	16	0
Pallister Reserve	2	3
Quona Reserve	3	0
Robinson Reserve	8	6
Stranolar Reserve	6	28
Taylor's Bay Road Reserve	9	0
Turner Reserve	6	6
Waikowhai Park	10	0
West Park	6	20

d) Puketāpapa Park and Street Tree Planting Opportunities (continued)

Streets/Road Reserve Planting Opportunities

Name	Tree Species	Potential Planting Opportunities
Ambury Avenue	<i>Sophora chathamica</i>	7
Anita Avenue	<i>Pittosporum crassifolium</i>	27
Bremner Road	<i>Pittosporum crassifolium</i>	41
Canberra Avenue	<i>Sophora microphylla</i>	11
Coleman Avenue	<i>Alectryon excelsus</i>	12
Cormack Street	<i>Griselinia lucida</i>	15
Currie Avenue	<i>Pittosporum crassifolium</i>	9
Duke Street	<i>Podocarpus totara</i>	21
Duncumb Street	<i>Metrosideros excelsa</i>	4
Fearon Avenue	<i>Alectryon excelsus</i>	14
Fernleigh Avenue	<i>Sophora chathamica</i>	17
Freer Street	<i>Sophora chathamica</i>	8
Fulljames Avenue	<i>Metrosideros excelsa</i> "Mistral"	11
Gilletta Road	<i>Metrosideros excelsa</i>	20
Griffen Park Road	<i>Melia azedarach</i>	15
Halsey Drive	<i>Sophora chathamica</i>	57
Hardley Avenue	<i>Podocarpus totara</i> "Aurea"	11
Hayr Road	<i>Tristanopsis laurina</i>	6
Himalaya Crescent	<i>Sophora microphylla</i>	12
Kimber Hall Avenue	<i>Melia azedarach</i>	19
Marco Polo Avenue	<i>Sophora microphylla</i>	18
Marion Avenue	<i>Pittosporum eugenioides</i>	24
McCullough Avenue	<i>Alectryon excelsus</i>	9

d) Puketāpapa Park and Street Tree Planting Opportunities (continued)

Streets/Road Reserve Planting Opportunities *continued*

Name	Tree Species	Potential Planting Opportunities
Melrose Road	<i>Metrosideros excelsa</i> "Mistral"	33
Niagara Crescent	<i>Pittosporum crassifolium</i>	13
Olsen Avenue	<i>Griselinia littoralis</i>	38
Parfitt Street	<i>Pittosporum eugenioides</i>	16
Pascoe Street	<i>Melia azedarach</i>	5
Peet Avenue	<i>Metrosideros excelsa</i>	4
Queensway	<i>Aesculus hippocastanum</i>	7
Robson Street	<i>Griselinia lucida</i>	10
Roskill Way	<i>Metrosideros excelsa</i> "Mistral"	11
Sally Crescent	<i>Pittosporum eugenioides</i>	4
Scout Avenue	<i>Alectryon excelsus</i>	21
Simmonds Avenue	<i>Pittosporum crassifolium</i>	11
Sylvania Crescent	<i>Sophora chathamica</i>	17
The Avenue	<i>Sophora chathamica</i>	39

e) Planting Examples

Tree in Stormwater Treatment Garden



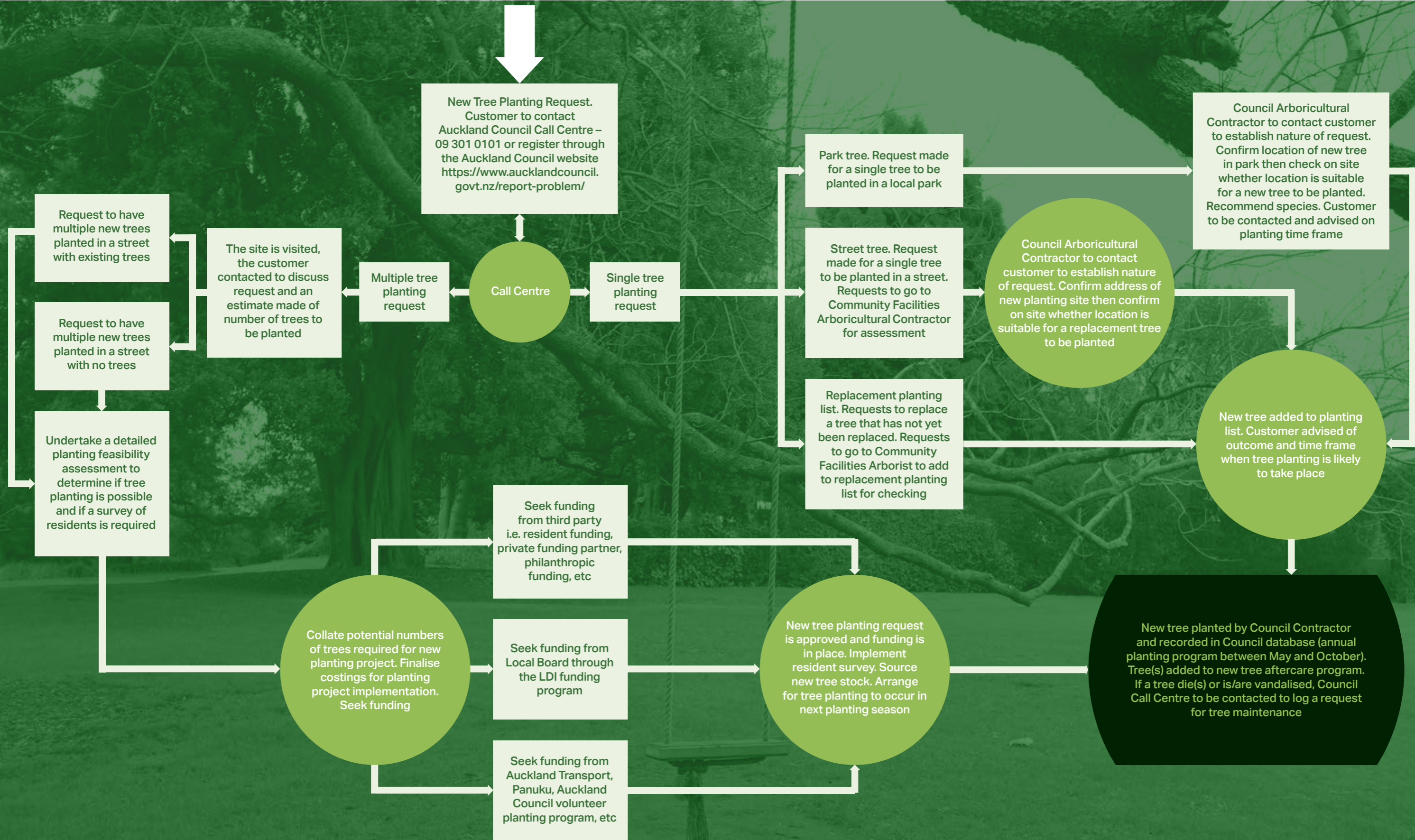
Park Planting



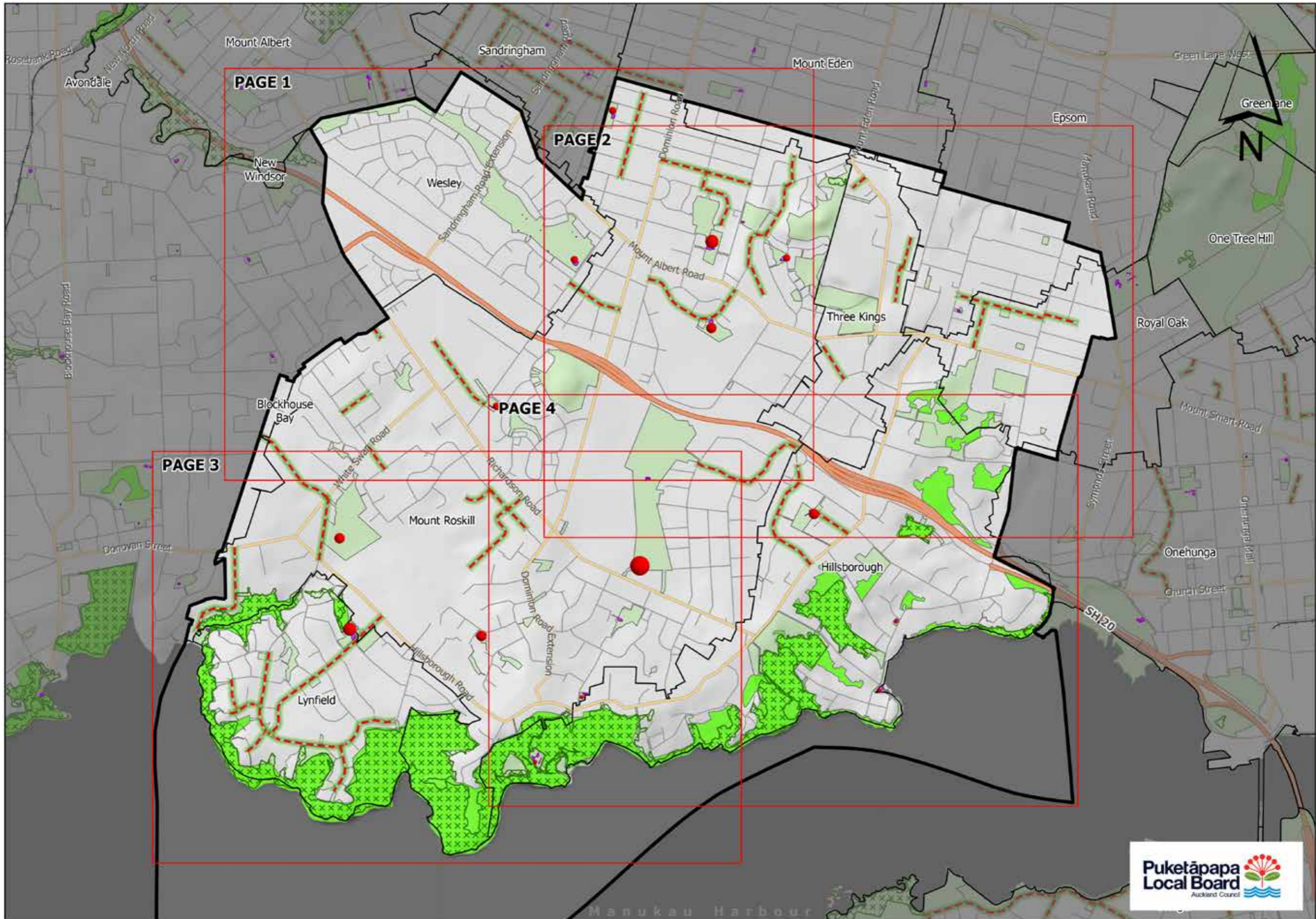
Tree in Engineered Planter Pit



f) Auckland Council Tree Planting Request Process



g) Local Board Overview Map



h) Suggestions For Public Planting Sites

Please detail planting opportunities within parks and on streets under the following maps. Refer to appendices C for larger maps of individual areas. Once completed, please forward your suggestions to www.aucklandcouncil.govt.nz/report-problem.



1

2

3

4

5

1

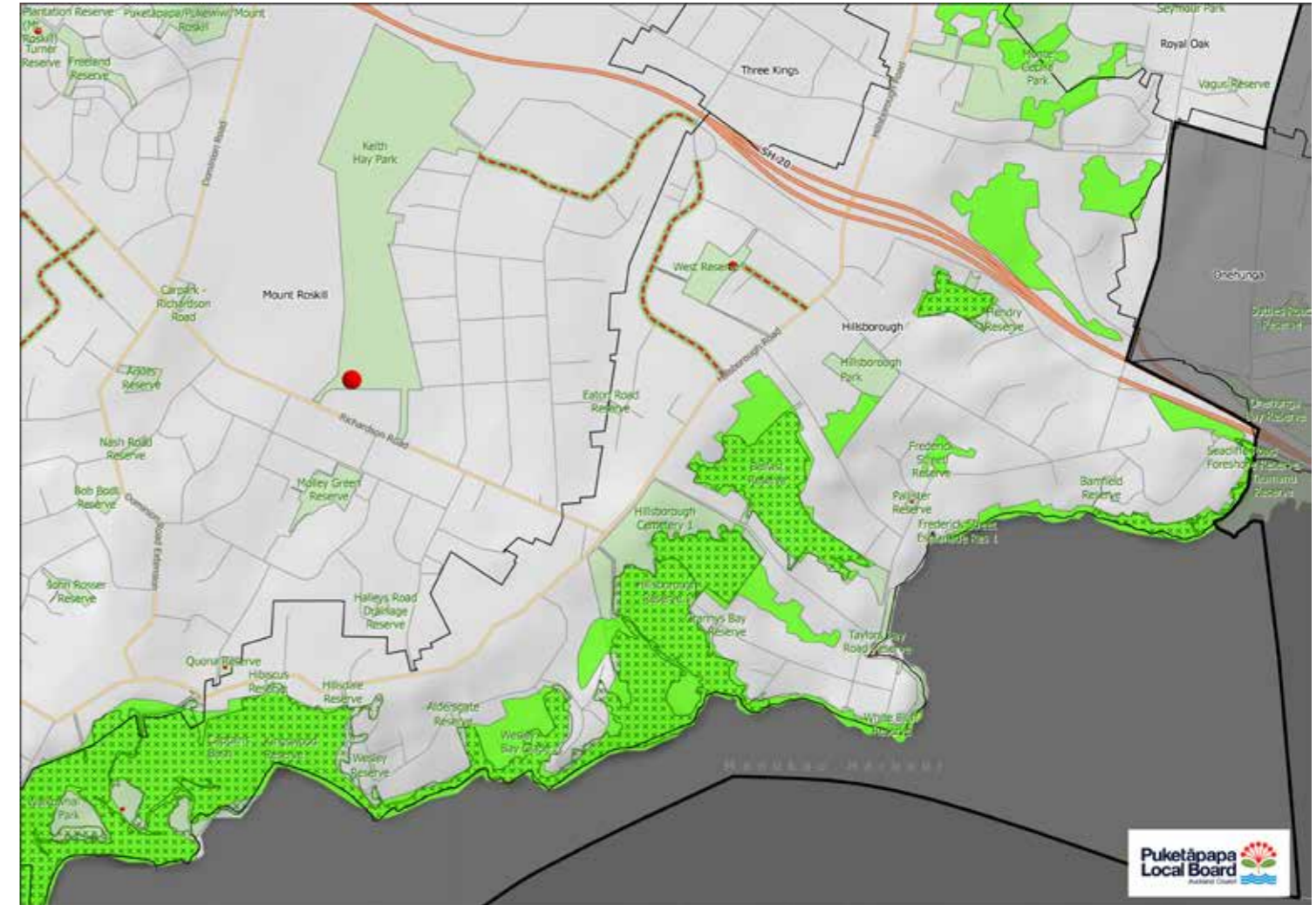
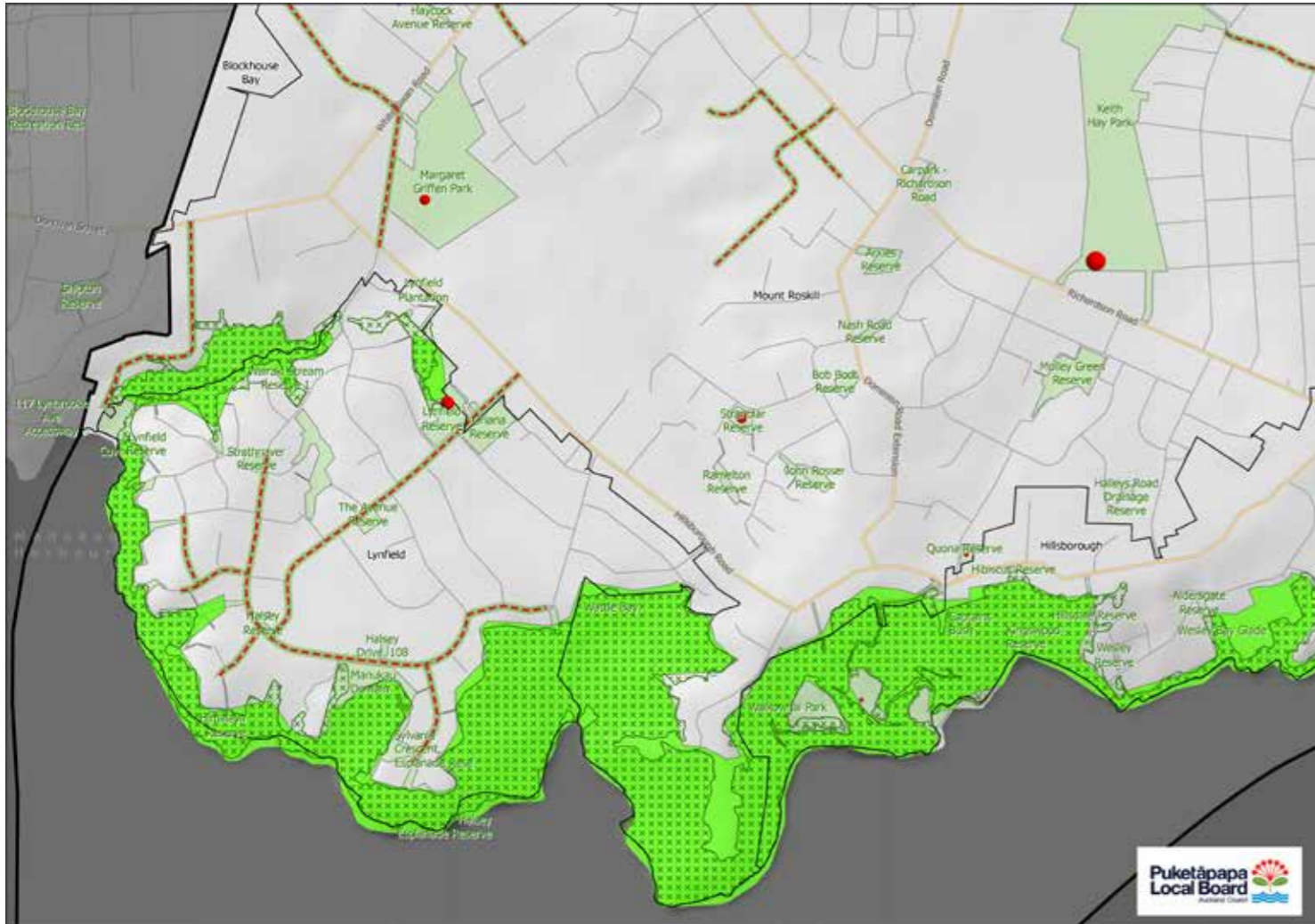
2

3

4

5

h) Suggestions For Public Planting Sites



1

2

3

4

5

1

2

3

4

5

Printed on paper made
from 100% recycled
post-consumer waste.

