

Waiheke Local Board Workshop Agenda

Date of Workshop: Wednesday 31 July 2024

Time: 11.30am

Location: Waiheke Local Board, 10 Belgium Street; MS Teams

Time	Workshop Item		Governance role	Purpose	Presenter(s)	Proposed Outcome(s)
11.30	Item 1	Climate Activator update Attachment Presentation – Waiheke Climate Activation	Keeping informed	Informal dissemination	Chelsee Neverman <i>Senior Low Carbon Specialist, Sustainability Initiatives</i> Greer Rasmussen <i>Biosecurity Adviser, Natural Environment Delivery</i> Kartik Bhat, <i>Relationship Advisor</i>	Members will be updated on the progress of programmes and initiatives towards Waiheke Climate Activation goals.
12:30	Lunch					
13:00	Item 2	Equestrian Services Assessment update Attachment Presentation to be added when available	Keeping informed	Informal dissemination	Jacqui Thompson-Fell <i>Parks & Places Specialist</i>	Members will be updated on the draft equestrian services assessment.

Time	Workshop Item		Governance role	Purpose	Presenter(s)	Proposed Outcome(s)
14:00	Item 3	High Pathogenicity Avian Influenza update Attachment Presentation – Mitigating the spread of HPAI through Tāmaki Makarau	Keeping informed	Informal dissemination	Rashi Parker <i>Birdcare Aotearoa</i> Carl Ashworth <i>Birdcare Aotearoa</i> Karen Saunders <i>Native Bird Rescue</i> Inga Muller	Members will be informed about the current global status of HPAI, and strategies to mitigate its spread in Aotearoa New Zealand.

Governance Role

1. Accountability to the public
2. Engagement
3. Input to regional decision-making
4. Keeping informed
5. Local initiative / preparing for specific decisions
6. Oversight and monitoring
7. Setting direction / priorities / budget

Role of Workshop:

- (a) Workshops do not have decision-making authority.
- (b) Workshops are used to canvass issues, prepare local board members for upcoming decisions and to enable discussion between elected members and staff.
- (c) Workshops are not open to the public as decisions will be made at a formal, public local board business meeting.
- (d) Members are respectfully reminded of their Code of Conduct obligations with respect to conflicts of interest and confidentiality.
- (e) Workshops for groups of local boards can be held giving local boards the chance to work together on common interests or topics

Waiheke Local Board Workshop Proceedings

Workshop record of the Waiheke Local Board held in person and via Teams on Wednesday 31 July 2024, commencing at 11.30am

Cath Handley (Chair)	Kylee Matthews	Bianca Ranson	Robin Tucker	Paul Walden
Present	Present	Present	Absent	Present (via MS Teams)

Time	Workshop Item		Attendee(s)	Summary of Discussions
11.30	Item 1	Climate Activator Update Attachment Presentation – Waiheke Climate Activation	Chelsee Neverman <i>Senior Low Carbon Specialist, Sustainability Initiatives</i> Greer Rasmussen <i>Biosecurity Adviser, Natural Environment Delivery</i> Michael Maahs <i>Manager, Waiheke Resources Trust</i> Kristin Busher <i>Partnership Manager, Waiheke Resources Trust</i> Kartik Bhat <i>IES Relationship Advisor</i>	<p>Presenters provided up an update on recent activities including the revitalised Welcome to Waiheke pack, the Climate Hui, progress on relationship building with other community organisations (e.g. Waiheke Island Tourism Inc.), and the Waiheke carbon inventory report.</p> <p>Members were given an overview of the 2025 workplan, including the development of a Carbon Positive Business programme, community organisation carbon audits, and the establishment of a Waiheke Climate Fund.</p>

Lunch

Time	Workshop Item		Attendees(s)	Summary of discussions
13:00	Item 2	Equestrian Services Assessment update Attachment Presentation – Waiheke Land Investigation	Jacqui Thompson-Fell <i>Parks & Places Specialist</i> Anthony Lewis <i>Land Advisory Services</i>	<p>Members were given an update on land investigation of various parks and reserves as possible locations for the Waiheke Pony Club.</p> <p>Members requested further investigation into Rangihoua Reserve Onetangi Sports Park options and queried if there is potential for the Reserves Management Plan to be reopened for consideration of this issue, and if it is feasible to consider multiple interconnected areas for Pony Club use.</p> <p>The presenters will look into these questions.</p>
14:00	Item 3	High Pathogenicity Avian Influenza update Attachment Presentation – Mitigating the spread of HPAI through Tāmaki Makaurau	Rashi Parker <i>Birdcare Aotearoa</i> Carl Ashworth <i>Birdcare Aotearoa</i> Karen Saunders <i>Native Bird Rescue</i> Inga Muller <i>Waiheke Bird Rescue</i>	<p>Members were informed about the risks posed by HPAI.</p> <p>Presenters advised that mitigation plans need to be made in advance of HPAI arriving in Aotearoa, including public education, management of domestic birds, and safe disposal of dead birds.</p> <p>Members suggested contacting the Department of Conservation and the Ministry for Primary Industries to seek access to their regional plans for addressing HPAI. Members identified the importance of a systematic approach to mitigation, with community awareness and education the initial focus.</p>

Governance Role

1. Accountability to the public
2. Engagement
3. Input to regional decision-making
4. Keeping informed

5. Local initiative / preparing for specific decisions
6. Oversight and monitoring
7. Setting direction / priorities / budget

Role of Workshop:

- (a) Workshops do not have decision-making authority.
- (b) Workshops are used to canvass issues, prepare local board members for upcoming decisions and to enable discussion between elected members and staff.
- (c) Workshops are not open to the public as decisions will be made at a formal, public local board business meeting.
- (d) Members are respectfully reminded of their Code of Conduct obligations with respect to conflicts of interest and confidentiality.
- (e) Workshops for groups of local boards can be held giving local boards the chance to work together on common interests or topics

Waiheke Climate Activation

To contribute to global, national, regional and local climate goals

Global goal - Paris Agreement

Ensuring temperature rise is below 1.5c

National goal - Zero Carbon Act 2019

Net zero by 2050

Regional goal - Te Tāruke-ā-Tāwhiri

Reduce greenhouse gas emission's by 50% by 2030 and net zero by 2050


Climate Change Iwi Leaders Group

Working with iwi and hapu around the country



Waiheke Local Boards goal

Carbon positive by 2040*

- completing a Waiheke Local Board Area Carbon Inventory Model by 2023 
- achieving a 100% circular food economy with 100% of all food and green waste composted on-island by 2025
- eliminating the environmental and economic impacts of fossil fuel based transport by 2030
- halving carbon emissions by 2030 (from 2016 baseline)
- reducing the average carbon footprint per resident to 2.5 tonnes by 2030
- achieving carbon positivity by 2040

**Goes beyond achieving net-zero carbon emissions to create an environmental benefit by removing additional carbon dioxide from the atmosphere*

Climate Action – Content package

Ready to take an action?
FREE resources are available!

FutureFit.nz
Find your carbon footprint

LiveLightly.nz
Tips to take climate action

Flood Viewer
Keep your home safe!

WRT

Waiheke Local Board
Auckland Council

Take Climate Action

Protect your home,
know your flood risk!



WRT

Take Climate Action

Try plant-based kai



WRT

Ready to take an action?
FREE resources are available!

FutureFit.nz
Find your carbon footprint

LiveLightly.nz
Tips to take climate action


Vegan Society NZ
Recipes and support going plant-based

WRT

Waiheke Local Board
Auckland Council

Take Climate
Action

The Waiheke Way



WRT

Waiheke Local Board
Auckland Council

Waiheke Resources Trust & Sustainability Centre
a day ago


Could we be doing this on Waiheke? What a great idea! Check out this fascinating 18-minute documentary by [350.org](#)! It highlights the unsung heroes across Aotearoa who are quietly transforming their communities to enhance energy access and resilience, combat energy poverty, create jobs, support the community, and fight climate change.

Keep your eyes peeled for more information about what local climate action groups are up to on Waiheke to help activate our Local Waiheke C... See more

Envirohub Bay of Plenty
2 days ago

This month at Envirohub we are looking into ways we can consume energy more sustainably

This 18 minute documentary is a really interesting watch Produced by ... See more



they'll give us a koha for a bike, bring it back


WRT

Waiheke Local Board
Auckland Council

Waiheke Resources Trust & Sustainability Centre
April 10

Let's take Climate Action together!

Measure your carbon footprint with Future Fit
Check out <https://www.futurefit.nz/> to see your carbon footprints (FREE!) Challenge friends through FutureFit for a bit of healthy competition Set goals together, motivate each other an... See more



Neke / Move

- Bike to work / school one day a week
- Take public transport instead of driving
- Offset your carbon emissions for any flights you take

WRT

Waiheke Local Board
Auckland Council



Our wonderful intern Abby introduces the Take The Jump movement and how she'll be making 7 key shifts in her life to reduce her carbon footprint. Stay tuned for our...

WRT

Waiheke Local Board
Auckland Council





Welcome to Waiheke Pack
A2 fold out pamphlet - Prototyping
Completed by end of July 2024.



WRT



Grant Writing

Auckland Council Climate Grant

WRT and Carbon Neutral Waiheke

To support the Waiheke base line data collection for the Local Board Climate Action Plan monitoring framework

Auckland Council Climate Grant

Kai for Community Festival

Tanya Batt

Sargood Bequest

Regrow program - Soil to Fork schools program

Woolworth food rescue fund

Successful application to support food rescue on Waiheke

Community and Volunteering Capability Fund

to support WRT internship program.

Advising

Wish Trust - Compost upscaling

Submissions

Ongoing relationship building with WITI. Attending monthly and networking meetings.

WITI

Ongoing relationship building with WITI. Attending monthly and networking meetings.

Love Our Wetlands Waiheke Public Dashboard

Records started July 2021

Total Project Area (m2)

107,886

Total Weed Control

74,799 m2

Total Volunteers

813

Total Volunteer Hours

2,382.8

Trees Planted Per Area

Project Area	Trees Planted
Rangihoua_B4	4,378
Rangihoua_C4	1,500
Rangihoua_B1	1,690
Rangihoua_B3	1,911
Rangihoua_B2	770
Rangihoua_C5	730
Rangihoua_D1	660
Rangihoua_C1	655
Rangihoua_C2	340
Rangihoua_A2	310
Rangihoua_C3	250
Rangihoua_D2	100

Our Project Areas

Total Trees Planted

12,101

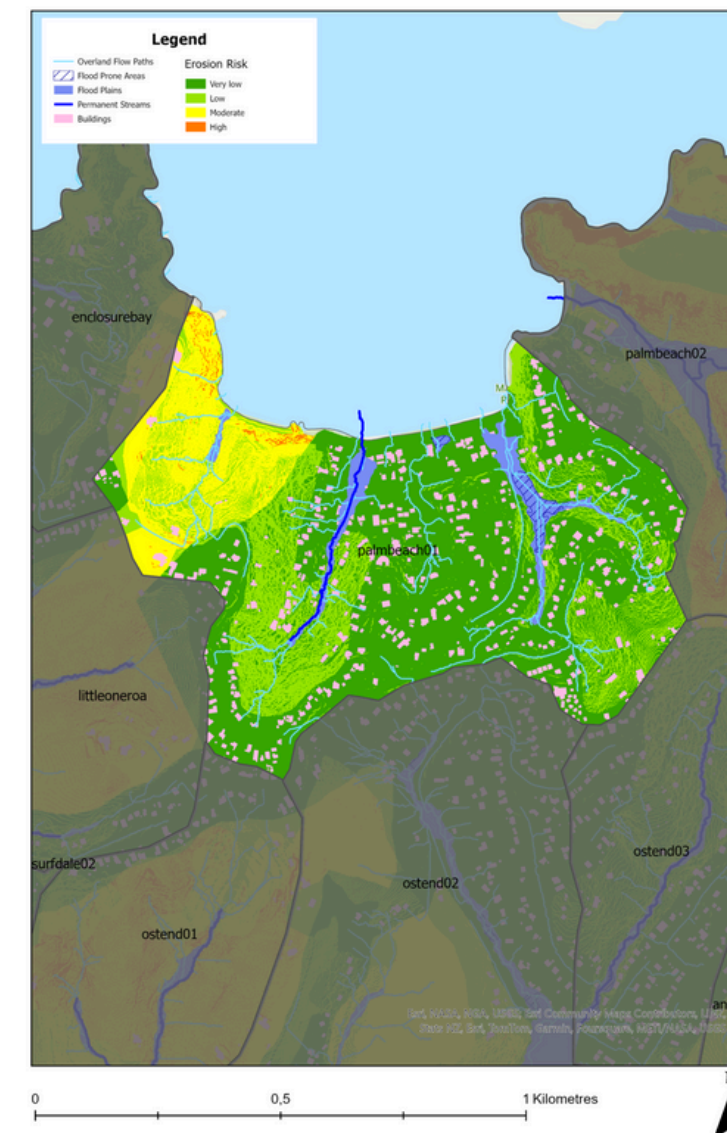
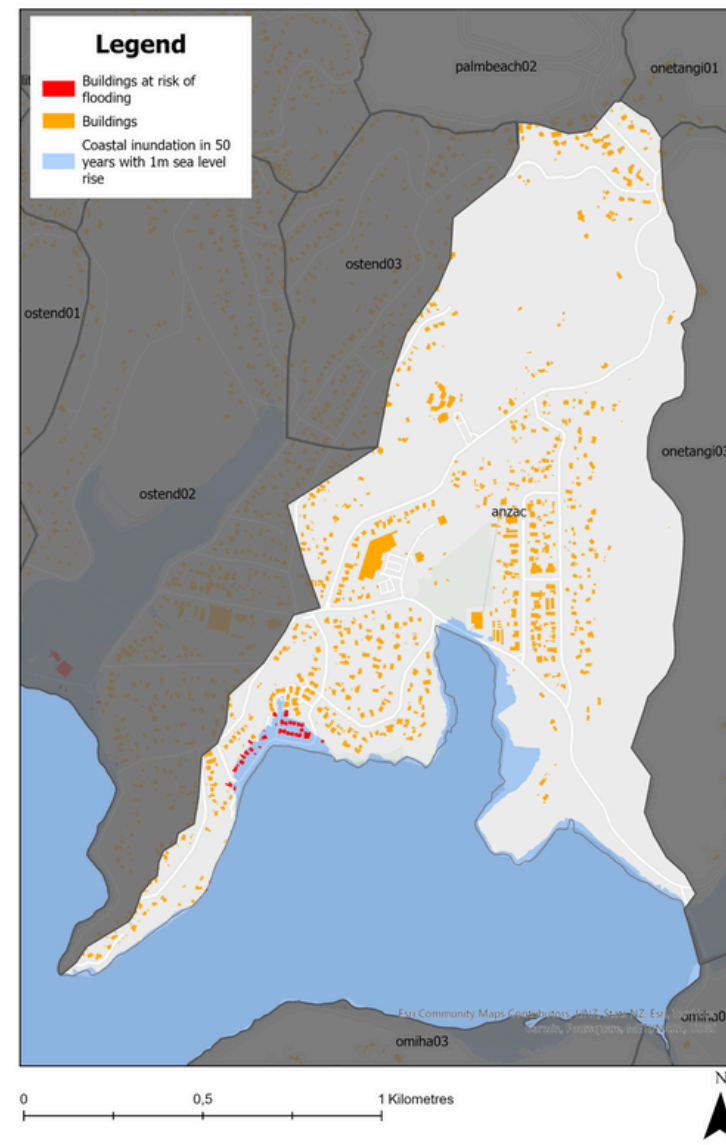
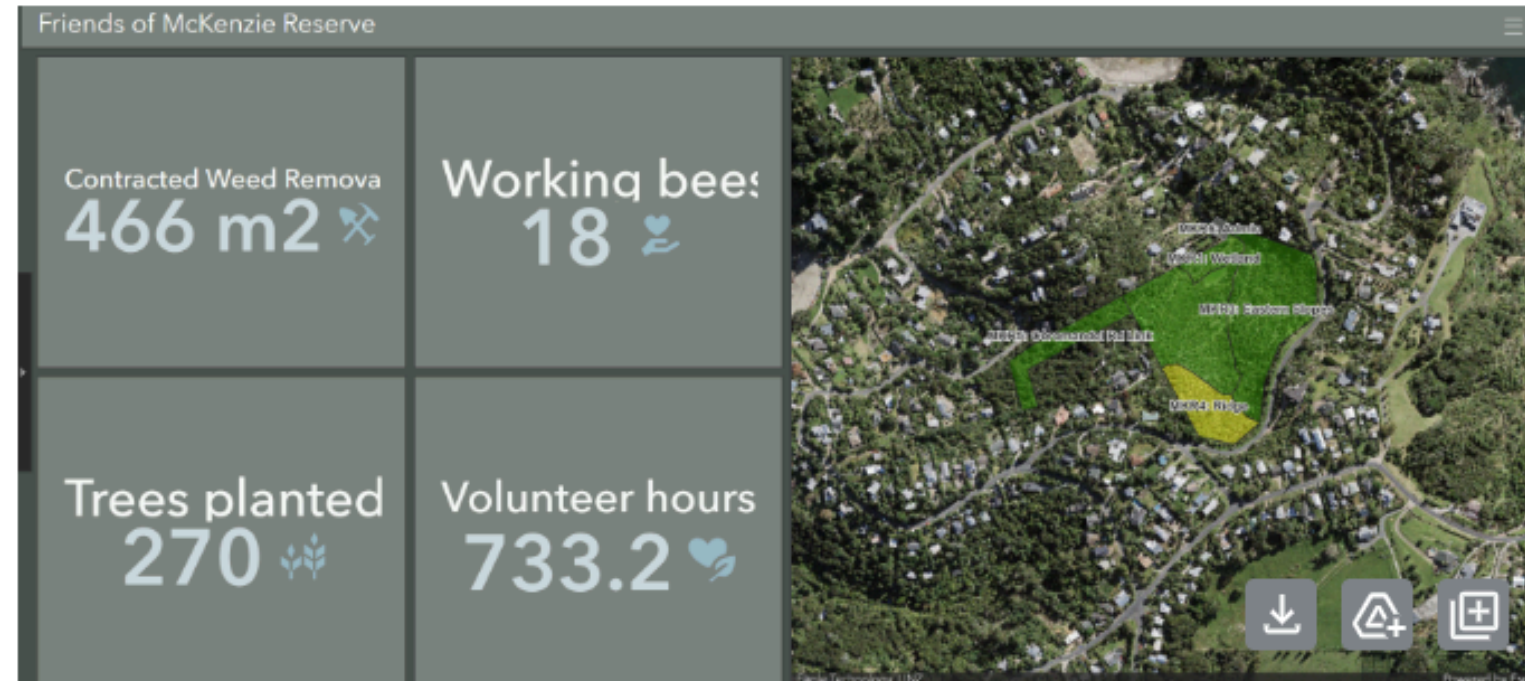
100 m

500 ft

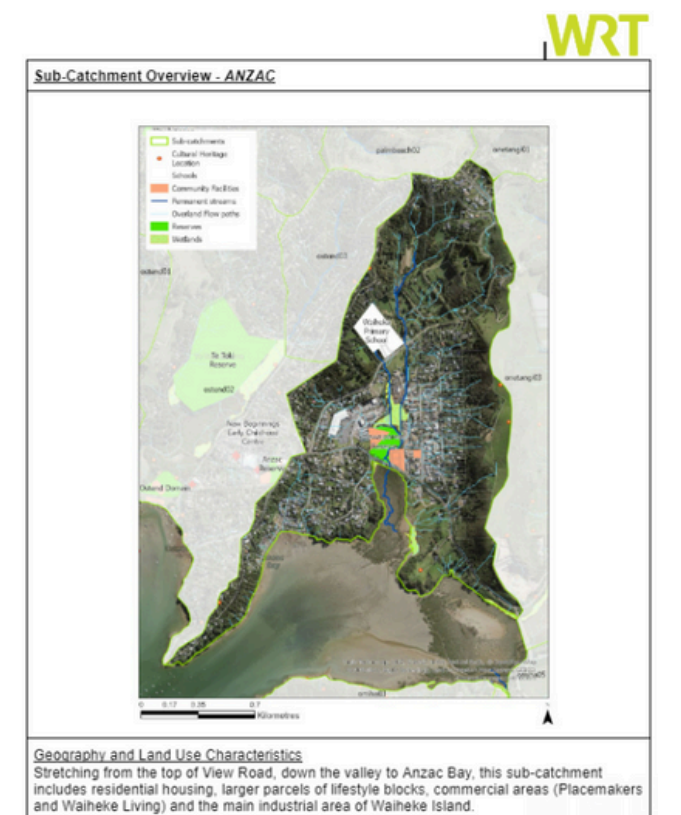
Eagle Technology, LHD / Copyright 2016 Crown copyright (c) - Land Information New Zealand. Powered by Esri



Community Group work:



	Ostend0 1		Ostend0 2		Ostend0 3		Anzac	
Water temperature	15.0	Good	15.9	Good	16.0	Good	16.2	Good
Water clarity	61 cm	Good	21 cm	Of concern	33 cm	Fair	30	Fair
pH	7.0	Excellent	8.0	Excellent	7.0	Excellent	7.0	Excellent
Dissolved oxygen	4.5	Fair	6.0	Fair	5.0	fair	8.0	Good
Nitrate	0.0 mg/L	Excellent	0.0 mg/L	Excellent	0.7 mg/L	Good	0.8 mg/l	Good
Phosphorous	0.2 mg/L	Fair	0.025 mg/L	Good	0.15 mg/L	Fair	0.15 mg/L	Fair
Ammonia	0.0 mg/L	—	0.0 mg/L	—	0.12 mg/L	—	0.25 mg/L	—



Waterways and Wetlands
The Tawaipareira creek runs from the upper catchment, through the valley to the wetland sandwiched between the industrial areas east and west, and north of Tawaipareira Reserve and the refuse station. Another small stream runs from beside the school and connects into the wetland. Other small wetlands are present on the edge of the mangroves in Anzac Bay.

Overland flow paths (stormwater) also connect into the creek from the top of the valley, and most significantly from the eastern side of the catchment from the top of the ridge, through residential then over industrial land (Tahi Rd). These stormwater flows are captured by the newly constructed interceptor drain (2022) which flows out to Anzac Bay.

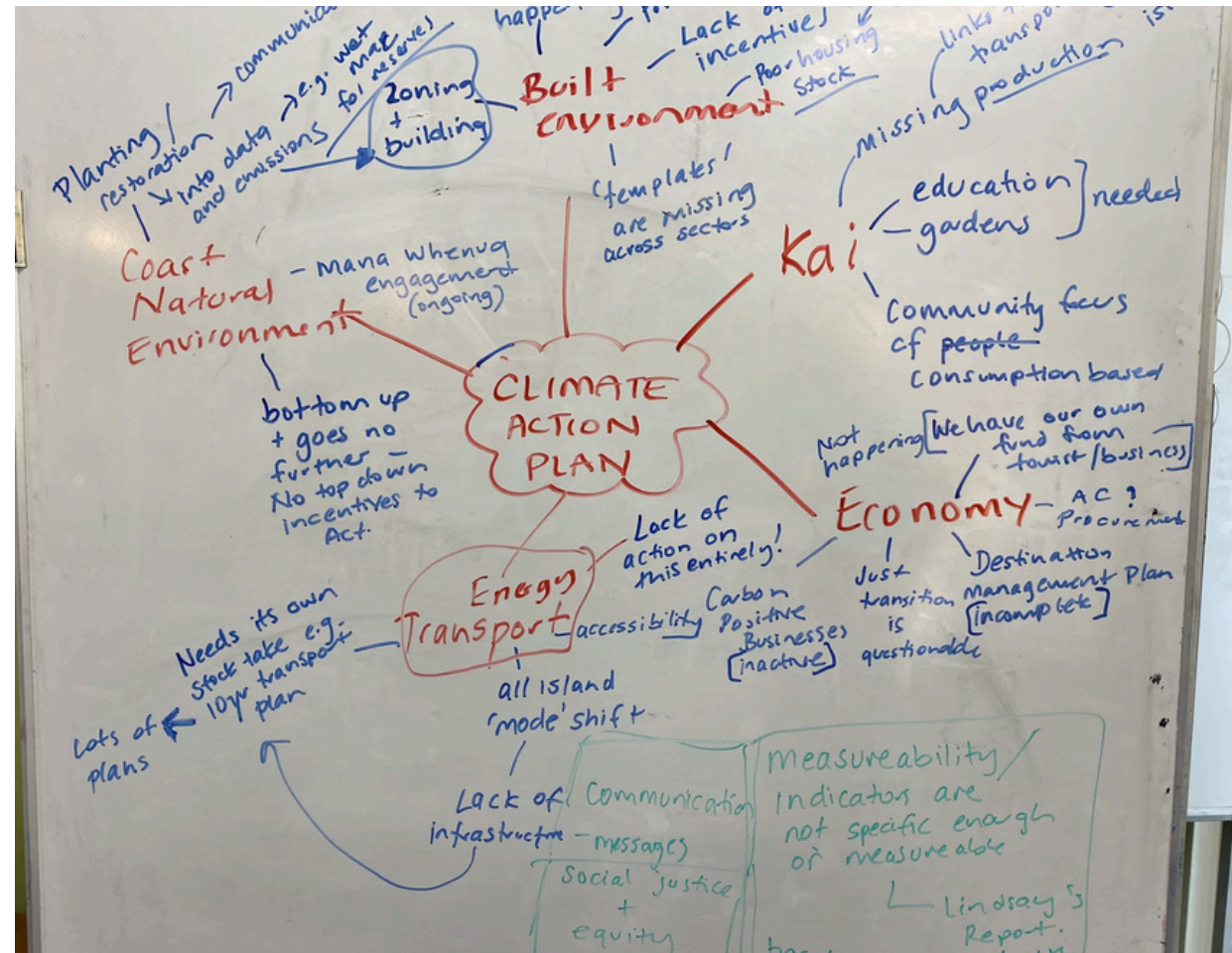
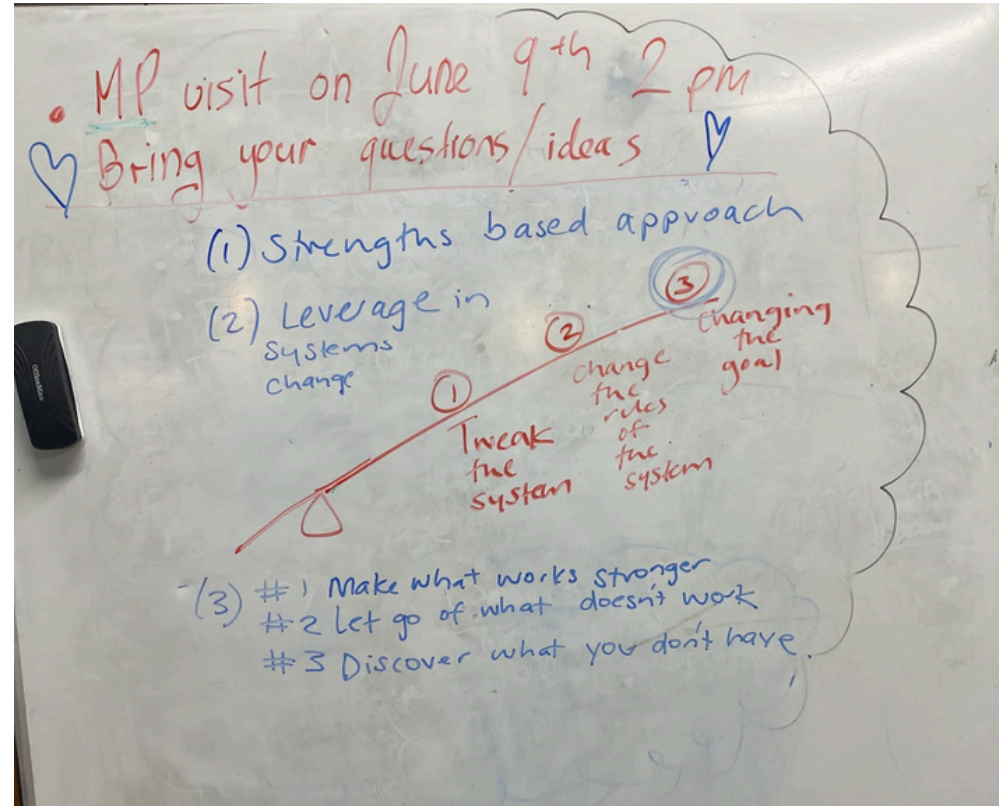
Significant Publicly Owned Land/Reserves
Tawaipareira Reserve - includes the skate park and the Wetland to the north of the reserve.

Other
Waiheke Recovery Park (dump/refuse transfer station)
Light to heavy industry

People/Human Activity Overview

Population (2018 Census)
Estimated Population: 588

Deprivation level (Across NZ 1 is low, 10 is high. Source: 2018 Census deprivation data averaged across the sub-catchment)



Climate Hui 2024

2025 Opportunities

CAP Theme	CAP Goal	CAP Action	WRT Workplan	WRT Objectives	WRT Deliverables
All themes	All Goals	All actions	Project delivery and Community hui <i>(Communtiy Engagement)</i>	Identify and connect people to specific bodies of work as outlined in the Local Plan and make progress visible. Organise and deliver annual hui with Climate Activator groups.	Build capacity with at least 4 stakeholder groups to support projects aligned with outcomes of CAP, gathering of milestones or achievements to celebrate. Delivery of one in person hui with key stakeholder groups.
Economy/Energy/Built Environment	Carbon Positive Economy/Just Transition	Support development and implementation of a Carbon Positive Business Programme which will drive investment into carbon positive development and employment within Waiheke Local Board area, in partnership with Auckland Council, Waiheke Connect, Waiheke Sustainability Centre, Tourism Waiheke, Auckland Unlimited, Auckland Transport, Carbon Neutral Waiheke, EECA, Amotai and carbon certification bodies. Identify local businesses and events that may be adversely impacted by the transition to a carbon positive economy. Create a group of local construction industry members (Architects, Builders, Suppliers, Waste providers) to champion and advocate more sustainable practices through design and building phases working within current building codes and recognised sustainable building certifications. Group to advocate to council on consenting issues and positive changes. Pioneer a Waiheke version of "How We Build"	Grant writing Support for WRT	Seek additional climate related funding sources applied to the benefit of Waiheke Island.	Three to five climate related grants completed. (WRT or partner organisations) At least one of those to be over \$25K
Economy/Natural Environment	Waiheke Climate Fund/ Offset Residual Emissions/ Carbon Positive Economy	Establish a Waiheke Climate Fund to offset unavoidable carbon emissions from the Waiheke Local Board Area and reinvest money raised directly into local carbon mitigation and resilience actions, including creation of simple mechanisms to enable voluntary participation by local businesses and visitors. Maximise the use of the Waiheke Climate Fund and ETS carbon credits, and other available funding sources to support local nurseries and accelerate planting. Ensure that the Waiheke Destination Management Plan aligns with the carbon positive goals and actions contained within this action plan, including support for the Waiheke Climate Fund	Waiheke Climate Fund	Support the establishment of a Waiheke Climate Fund	Research approaches to a "Waiheke Climate Fund" and provide a report on recommendations, process and timelines.
All themes	All Goals	All Actions	Catalyst for Change <i>(Comms)</i>	Building upon enviromental behaviour change to visualise Waiheke based data to promote and track emmisions reduction progress	Annual Communication of Emissions progress - e.g. Annual Emissions feature in local publications - updated status of emissions, celebrating success, priorities for residents to help etc Explore innovative tools to communicate behaviour tracking
Community and Coast	Community and Coast	Increase our communities' understanding of climate change, its impacts and risks and help them take practical action (pg 48). Create opportunities for the community to learn about climate change and their carbon footprints (pg 49). Better understanding of current and future impacts of extreme weather events and climate change. Reduce number of homes and businesses across Waiheke and Rakino that are exposed to flood risk (pg 48).	Climate action communications <i>(Comms)</i>	General budget to cover advertising costs as they arrise to communcate Waiheke's emmisions reduction progress and practical climate action in conjunction with WRT's Catalyst for Change in this workplan.	Communications plan for a highly targeted outcomes driven campaign. Advertising created and booked in alignment with communications plan.

Land Investigation Findings – Pony Club Alternative Locations

Waiheke Local Board

Land Advisory/Parks and Community Facilities

August 2024



Purpose:

- Update the local board on the findings of the land investigation of various parks and reserves concerning possible alternative locations for the Waiheke Island Pony Club (WIPC).
- Provide statutory advice regarding the process involved for reclassification of parks and reserves.



Background

- The Waiheke Local Board has requested Parks and Community Facilities to investigate possible alternative parks/reserves for relocating the WIPC.
- The local board identified the following two (2) parks and reserves for investigation:
 - Okahuiti Scientific Reserve and Te Toki Scenic Reserve
 - Rangihoua Onetangi Sports Park
- Land Advisory Services has undertaken a land status investigation for Okahuiti and Te Toki Reserves, but not Rangihoua Onetangi Sports Park.



Okahuiti Scientific Reserve/Te Toki Scenic Reserve

- Okahuiti Scientific Reserve and Te Toki Scenic Reserve are included in the Waiheke Local Parks Management Plan (approved in 2023).
- As noted in the LPMP, both of these reserves and the adjacent Te Toki and Wharf Reserves consist of various land parcels held under Auckland Council under different legalisation and for different purposes.



Okahuiti Scientific Reserve	
Address	12 Wilma Road
Legal Description	Lot 2 DP 196914
Statutory Actions	[Create] Scientific Reserve [Okahuiti Scientific Reserve] New Zealand Gazette 1999 p 3771, GN D522637.1
Record of Title	Held in cancelled title NA89C/257
Area	81710m2
Owner	Auckland Council
Land Acquired By	Transferred to Auckland City Council - see cancelled title NA89C/257. By resolution (see Gazette 1999 page 3771)the land was declared and classified to be a scientific reserve
Land Held	Reserves Act 1977
Ownership	Reserve under Reserves Act
Current Classification	Scenic reserve (1a)
Classified/Reclassified	Classified
Comments	See Gazette 1999 page 3771



Te Toki Scenic Reserve	
Address	12 Wilma Road
Legal Description	Lot 1 DP 196914
Statutory Actions	[Create] Scenic Reserve [Te Toki Scenic Reserve] New Zealand Gazette 1999 p 3771, GN D522637.1
Record of Title	Held in cancelled title NA89C/257
Area	70158m2
Owner	Auckland Council
Land Acquired By	Transferred to Auckland City Council - see cancelled title NA89C/257. By resolution (see Gazette 1999 page 3771) the land was declared to be a scenic reserve
Land Held	Reserves Act 1977
Ownership	Reserve under Reserves Act
Current Classification	Scenic reserve (1a)
Classified/Reclassified	Classified
Comments	See Gazette 1999 page 3771



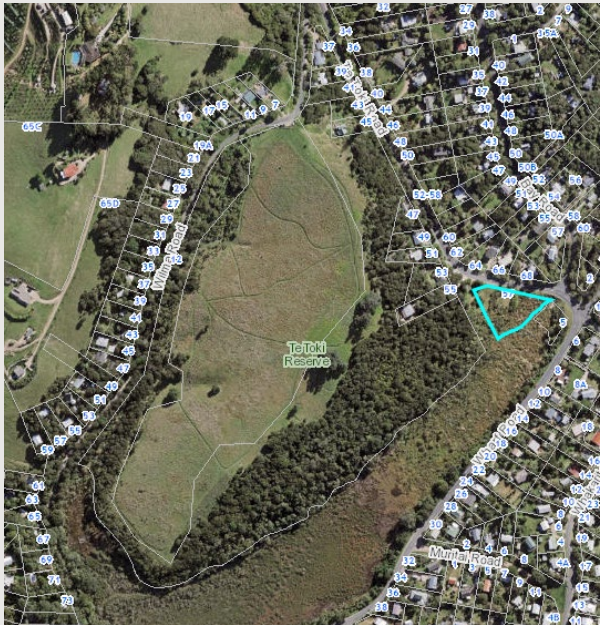
Address	
Legal Description	Section 1 SO 444626
Statutory Actions	
Record of Title	
Area	1398m2
Owner	Auckland Council
Land Acquired By	Legalisation as per Survey Office Plan 444626
Land Held	
Ownership	
Current Classification	
Classified/Reclassified	
Comments	Legal road



Address	
Legal Description	Part Lot 173 DP 17060, shown as Section 2 in SO 444626
Statutory Actions	[Create] Road New Zealand Gazette 2013 p 4418 Vests in the Auckland Council
Record of Title	Previously in Part NZ651/31
Area	91m2
Owner	Auckland Council
Land Acquired By	Transferred to Auckland City Council by agreement - see cancelled title NA651/31. By Gazette 2013, page 2477 section 2 was declared road.
Land Held	
Ownership	
Current Classification	
Classified/Reclassified	
Comments	Road



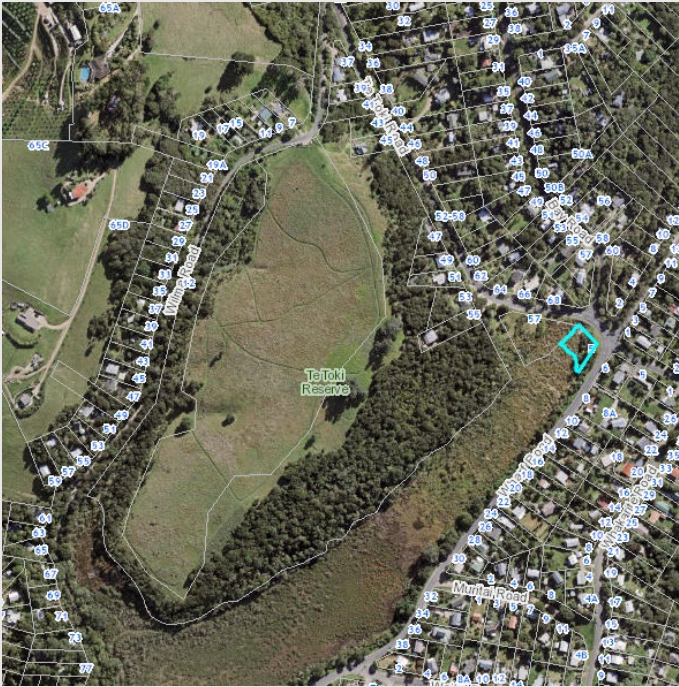
Te Toki Reserve	
Address	12 Wilma Road
Legal Description	Lot 173 DP 17060, shown as Section 3 in SO 444626
Statutory Actions	[Create] Fee Simple New Zealand Gazette 2013 p 4418 Residue Parcel
Record of Title	629135
Area	2999 m2
Owner	Auckland Council
Land Acquired By	Transferred to Auckland City Council by agreement – See cancelled title NA651/31
Land Held	Local Government Act 2002
Ownership	Fee simple
Current Classification	
Classified/Reclassified	
Comments	



Address	
Legal Description	Part Lot 443 DP 14189, shown as Section 4 in SO 444626
Statutory Actions	[Create] Road New Zealand Gazette 2013 p 4418 Vests in the Auckland Council
Record of Title	Previously NA339/86
Area	382m2
Owner	Auckland Council
Land Acquired By	Legalisation as per Survey Office Plan 444626
Land Held	
Ownership	
Current Classification	
Classified/Reclassified	
Comments	Road



Wharf Reserve	
Address	12 Wilma Road
Legal Description	Lot 443 DP 14189, shown as Section 5 in SO 444626
Statutory Actions	[Create] Fee Simple New Zealand Gazette 2013 p 4418 Residue Parcel
Record of Title	
Area	1036 m2
Owner	Auckland Council
Land Acquired By	
Land Held	Reserves Act 1977
Ownership	Reserve under Reserves Act
Current Classification	Scenic s19(1b)
Classified/Reclassified	Classified
Comments	See Gazette 2020 3713



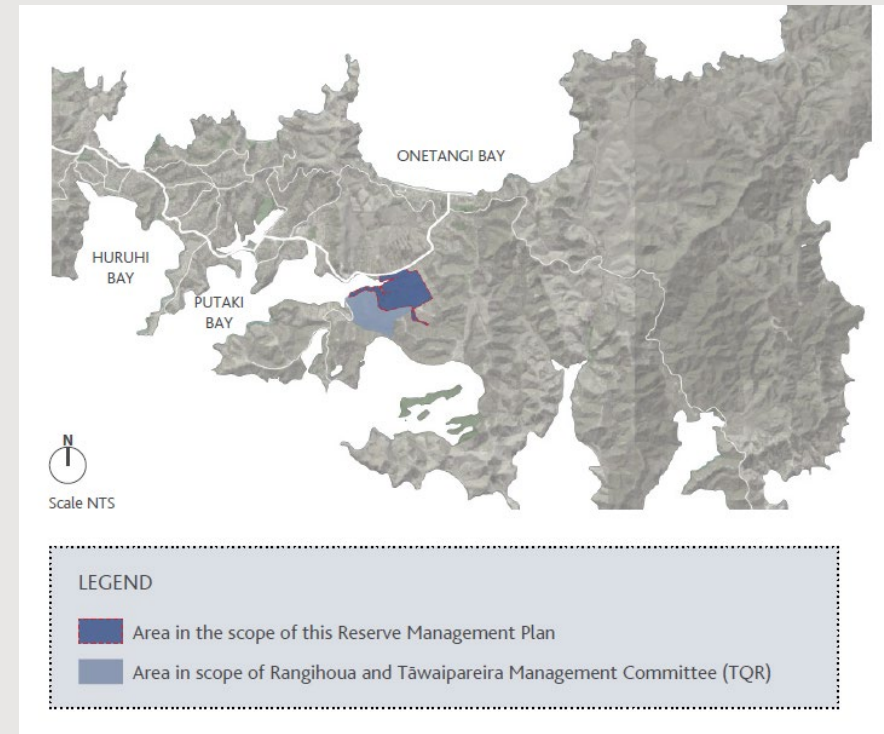
Section 24(3) Reserves Act 1977

- The salient provision is **s 24(3) of the Reserves Act 1977**, which prohibits the changing of any scenic, nature or scientific reserve to a recreation (or similar other class) reserve without the consent of the Minister of Conservation.
- The power to grant consent has not been delegated to local authorities.
- The Minister of Conservation also needs to be satisfied that in providing consent, the natural intrinsic features and qualities of the reserve are no longer suitable for the scenic/nature/scientific classification purposes.
- Staff note that an issue has been raised of some of the parcels being gifted to council. It is not clear which parcels have been gifted. Legacy transfer documents requested from LINZ have not been released.
- Given the possible endowment matter, which is yet to be considered, as well as the requirements of s24(3), it would seem a very high statutory threshold to cross to change the classifications of Te Toki Reserve from scenic/scientific/nature to a lower class such as recreation or local purpose, which would be required to support equestrian activities.



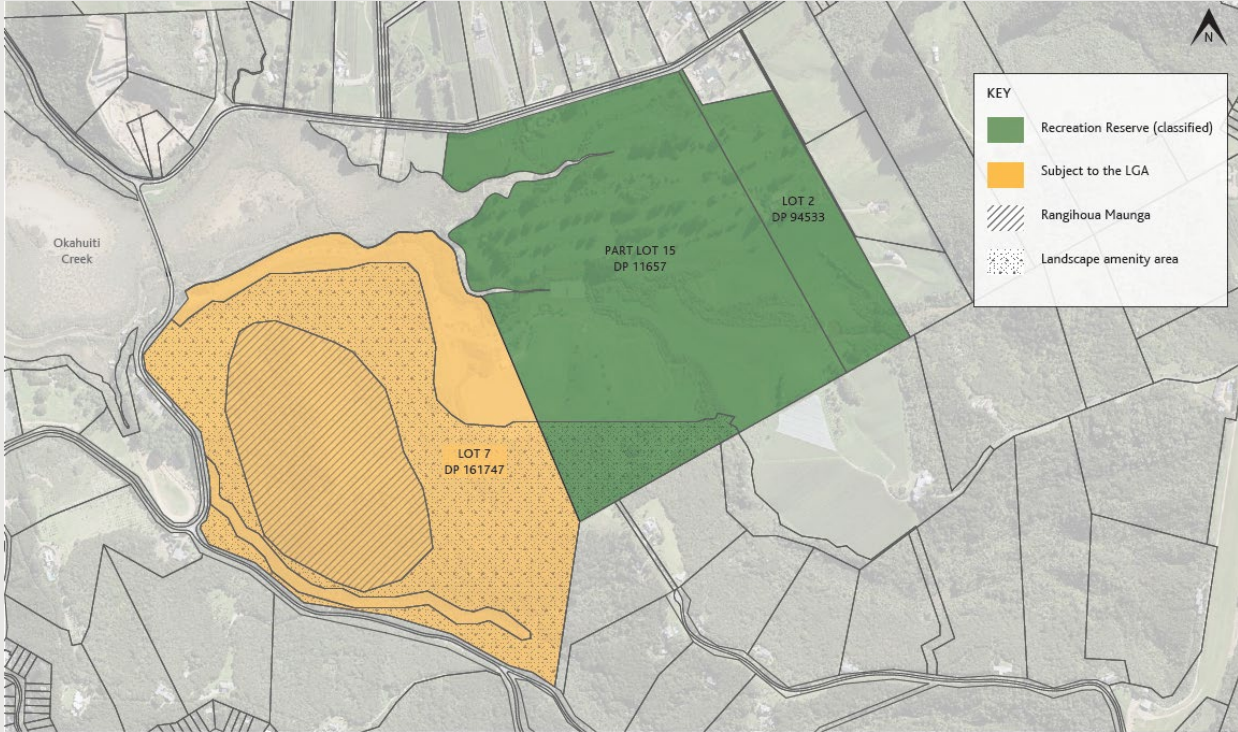
Rangihoua Onetangi Sports Park

- Staff have been requested to consider an area of Rangihoua Onetangi Sports Park excluded from the scope of the reserve management plan.
- This land parcel is also excluded from the approved Waiheke LPMP.
- As the map below shows, the area is in scope of the Rangihoua and Tāwaipareira Management Committee.
- Land Advisory Services have not undertaken a land investigation of this park.



Rangihoua Onetangi Sports Park

Rangihoua Maunga and surrounding landscape amenity	
Address	133-165 Onetangi Road
Legal Description	Lot 7 DP 161747
Statutory Actions	
Record of Title	
Area	54.29ha
Owner	Auckland Council
Land Acquired By	
Land Held	Local Government Act 2002
Ownership	
Current Classification	
Classified/Reclassified	
Comments	Subject to co-management agreement with mana whenua



- In 2017, the local board proposed to establish the Rangihoua and Tāwaipareira Management Committee.
- As treaty settlements are pending, the committee has not convened.
- Advice is to await treaty the treaty settlement and engage with mana whenua prior to making any decisions on the future use of the land.



Rangihoua Onetangi Sports Park constraints

- Pony club basic land requirements
 - 4-5ha minimum provision
 - Up to 8ha for certain pony club events (e.g., cross country)
 - Land for grazing
- Pony club basic facility requirements
 - 1 x all-weather arena
 - Cross country course up to training level
 - Yards
 - Access and parking
 - Water supply, watering and wash-down facilities
 - Safe facilities and safe non-horse area
 - Club rooms, equipment shed, lock up facilities, and trailers
 - Toilets, power, and phone.
 - Basic equipment – sets of jumps, piping, markers, and ropes



Summary advice

- The Reserves Act 1977 states that the consent of the Minister of Conservation is required to change a scenic reserve to a recreation reserve.
- Staff advice confirms that there is a high statutory threshold to cross to change the classifications of Okahuiti and Te Toki Reserves to recreation reserve for equestrian activities.
- Rangihoua Onetangi Sports Park is subject to co-management agreement and the committee has yet to be convened. Decisions on future recreational provision should not pre-empt mana whenua engagement.
- Rangihoua Onetangis Sports Park does not meet the basic land and facility requirements for pony clubs as guided by the New Zealand Pony Club Association.



Next steps

- The Waiheke local board is currently considering a Land Owner Approval application from WIPC to re-establish facilities damaged during a fire on site at Te Huruhui Reserve.
- The Parks and Community Facilities leasing team has included the WIPC lease a part of the local board's FY25/26 work programme.
- The pending equestrian services assessment can be progressed at the local board's direction, noting that an alternative location for WIPC has not been identified to date.



Mitigating the spread of Highly Pathogenic Avian Influenza H5N1 through Tāmaki Makaurau

Dr. Rashi Parker (PhD) and Carl Ashworth (GM)

Bird Care Aotearoa Charity Reg. CC37288



Aotearoa's leading wild bird hospital and rehabilitation centre



Korora Penguin



Tītī Cook's Petrel

- 6000+ annual admissions, rescued by the public, Dept of Conservation, councils or wild life agencies.
- Dept of Conservation permit and referrals for endemic and native species.
- Provide species-specific care, and regularly attend to **sick or injured sea birds- frontline response.**
- Funded by generous donations and contestable grants.

Highly Pathogenic Avian Influenza, H5N1- an imminent risk to Aotearoa



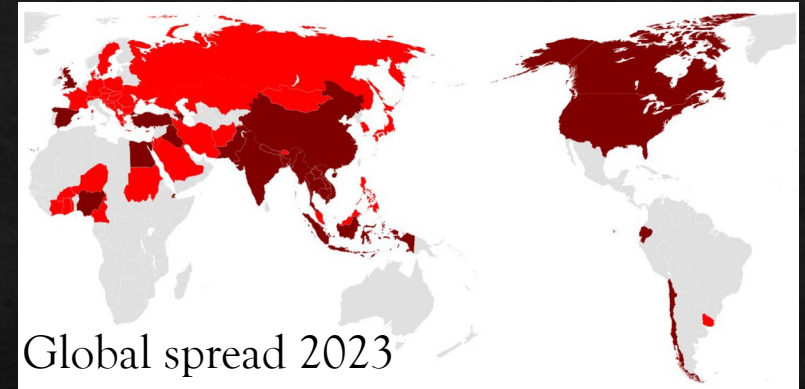
NY Times

Farms are fertile ground for the virus to jump species — from cat to cow to pig and human, in any order.
Rachel Bujalski for The New York Times



NY Times

Disposing of quarantined eggs at a poultry farm in Margoliot, Israel, in 2022. Aref Safadi/EPA, via Shutterstock



Global spread 2023

Bird flu in US cattle has caused concern amongst milk-drinkers. Is cow's milk safe to drink?

24 hours ago

By Lucy Sherriff

Share



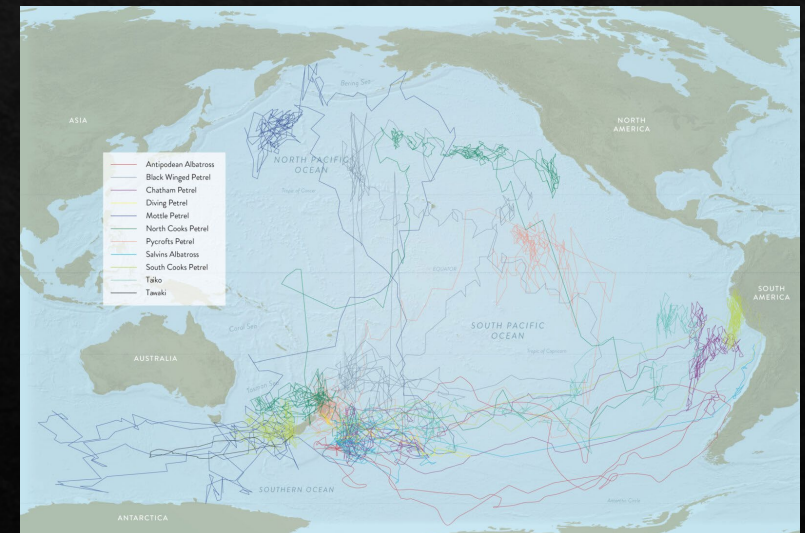
BBC

Fears for penguin colonies after the discovery of the highly contagious H5N1 virus in two dead skuas



The Guardian

A royal penguin defends a dead chick from a brown skua, Macquarie Island, Antarctica. Scientists think skua will probably transmit H5N1 to penguins. Photograph: blickwinkel/Alamy



<https://www.nzgeo.com/stories/where-the-seabirds-go/>
Global Location Sensor (GLS) tags

BCA needs support for our *front-line* role in mitigating the spread of H5N1



01



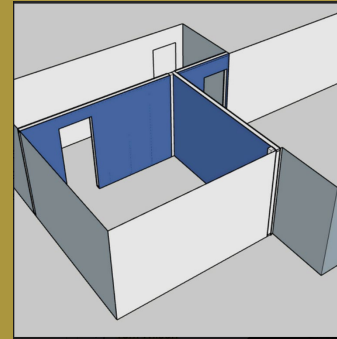
BROAD-SPECTRUM
MICROBIAL
DISINFECTANTS ~\$40,000:

*F-10. 1L ORDER, \$178.70,
EVERY 75 DAYS

*STERIGENE-GREEN

20L ORDER, \$1070, EVERY 14
DAYS.

02



ISOLATION/
CONTAINMENT

*DEDICATED QUARANTINE
FACILITY & STAFF \$90,000

*ISOLATED DUCKERY
\$12000

*ERECT NON-PERMEABLE
WALLS IN GENERAL
WARDS, \$8277

03



SURVEILLANCE/
SCREENING

*DEDICATED AVIAN
SPECIALIST VET NURSE,
\$90,000 TO COLLECT
BIOLOGICAL SAMPLES.

>LOCATIONS OF INTEREST

Birdcareaotearoa.org.nz
support@birdcareaotearoa.org.nz



Quarantine, and barrier control

- BirdCare Aotearoa's H5N1 preparedness response includes establishing a permanent quarantine area.
- Staff to be confident on routine and PPE protocols for quarantine.
- Isolate areas and teams working in high containment.
- Ramped up use of fast-acting, broad-spectrum microbial disinfectants; again, preparing staff for risk of any biosecurity incursion.



For our city, full of bird-lovers, we need to be prepared

