

# Waitākere Ranges Local Board Workshop Record

Workshop record of the Waitākere Ranges Local Board held at the Waitākere Ranges Local Board office, 39 Glenmall Place, Glen Eden, Auckland on Thursday, 2 November 2023, commencing at 10.15am.

## PRESENT

**Chairperson:** Greg Presland  
**Members:** Michelle Clayton  
Mark Allen  
Linda Potauaine (*until 2.42pm*)  
Liz Manley (*until 2.50pm*)  
Sandra Coney (*from 11.00am*)

## Apologies:

**Also present:** Brett Lane, Natasha Yapp, Nataly Anchicoque and Sharlene Riley

| Workshop Item   | Summary of Discussions   |
|---|--|
| 2023 Business Improvement District (BID) annual presentation<br>Gary Holmes, Glen Eden BID Manager<br>Alexander Croft, Senior Advisor CCO/External Partnerships<br>10.15am – 11.00am  | Board members briefed on the accomplishments associated with the Business Improvement District (BID) programme and were provided with insights into the upcoming 12-month plans. |
| Community Waitākere update<br>Mark Allen, Executive Officer Community Waitākere<br>Sarah Mikkelsen, Operations Manager Community Waitākere<br>Chris Burton, Environmental Team Leader<br>Cicilia Dwe, Connected Communities Advisor<br>Chris Bindon, Conservation Advisor<br>Lisa Howard-Smith, Community Broker, Waitākere Ranges Local Board<br>Nick FitzHerbert, Team Leader Relationship Advisory | Board members updated on the organisation's delivery against the previous year's funding agreement, strategic direction and the Pekapeka educational project.                    |

| Workshop Item   | Summary of Discussions   |
|---|--|
| 11.15am – 12.22pm   |  |
| Fees and performance measures<br>Brett Lane, Senior Local Board Advisor<br>1.07pm – 1.45pm  | Staff guided the discussion seeking direction from the Board on developing new tailored performance measures for the next Local Board Agreement / Local Board Annual Report. |
| The Trusts<br>Allan Pollard, Chief Executive Officer, The Trusts<br>Lynette Adams, General Manager Community Engagement<br>1.45pm – 2.42pm  | Board members updated on a new business strategy as well as a community funding strategy developed by the Trusts.  |
| Connected Communities overview<br>Lisa Howard-Smith, Community Broker, Waitākere Ranges Local Board<br>Jamie Adkins, Place & Partner Specialist<br>Bronwyn Bent, Place & Partner Specialist<br>Kathryn Schuster, Advisor Community Delivery (Central/East)<br>2.42pm – 3.35pm | Board members updated on the financial year 2023/2024 Connected Communities Work Programme.  |

The workshop concluded at 3.35pm.



***Annual Report to  
Waitakere Ranges Local Board  
2 November 2023***



# AGM 2023 – 30<sup>th</sup> October

- Adoption of Annual reports from Chair, Manager / Treasurer
- Adoption of Audited financial accounts
- Adoption of 2024/25 Indicative business plan and budget
- Approval for 9% increase in BID targeted rate up to \$103,000
- Approval to investigate BID Expansion
- Committee elected including two new members
- General business and networking





# Annual Report 2023

## **Glenmall Place Improvements/Presentation of the Village Centre**

- We have worked with the local board to remove the poster bollard in the centre of Glenmall Place, as this was untidy and contributed to rubbish/paper in the town centre.
- We also work closely with AT, Auckland Council, and the local board, to ensure any issues with cleaning or upkeep are identified and resolved. The garden maintenance and litter collection are now being completed in a timelier manner, though further improvement is always welcome.
- We have continued with our pigeon spikes, to assist our businesses and churches with any ongoing pigeon issues.

## **Artwork/murals around the Village Centre**

- We have identified rejuvenation projects on some of our older murals, that we are currently getting quotes for, with planning underway for a new mural to be completed by Anna Crichton and mural artists from A Supported Life in March 2024

# Annual Report 2023

## Easter Promotion

- The Glen Eden Easter Extravaganza was a huge success. People from all over West Auckland (and further) came to Glen Eden for a fantastic family fun day. We also had a visit from Easter Bunny.
- As part of the day, we held a competition, people had to find the 10 posters around Glen Mall, and enter the different words on these posters. From this we then had 5 winners who each received a gorgeous hamper filled with easter eggs, cookies, and other goodies. We also had several runners up who won amazing macaroons sets.
- The Easter Extravaganza was a fantastic community day, with positive feedback received on social media and in person.



# Annual Report 2023

## The Village Voice

- This year we unfortunately had our longtime editor, David Blocksidge, leave New Zealand. We have since worked with a new editor, Catherine Watson, to assist with the first edition of a new version of The Village Voice. The first edition of this was financially assisted by the BID, to ensure this could go ahead regardless of advertising.
- The Village Voice advertising and content is now gaining momentum, and Catherine is doing a fantastic job of producing our amazing community/business magazine. This is currently being published every two months. The print run is smaller than previous, but this is supported by an online flip book version that is well-read each edition



# Annual Report 2023

## **Environmental issues**

- We continue to report environmental issues such as graffiti, and other damage to property to Auckland Council and other agencies for appropriate action.

## **Glen Eden Community-Led Plan**

- Working with Auckland Council/Michael Alofa and other stakeholders. We have been looking at ways to bring people back to Glen Eden and revitalise the area. Michael Alofa is working on the final stages of a historic walking tour around Glen Eden, taking in 10 historic sites with information for each site available through a QR code system.

## **CCTV**

- We have been working with our external supplier to ensure our CCTV is up to date and working well. We are in the process of updating further cameras, and ensuring the coverage of Glen Eden is as comprehensive as possible. We continue to assist the police etc with any enquiries around CCTV.

# Annual Report 2023

## **Networking opportunities**

- We began our networking evenings with a small but successful turnout to our first event. This will continue into the foreseeable future.

## **Glen Eden footpaths and roads**

- We proactively work with Council and AT to ensure the roads and footpaths are maintained. Any roadworks that will be undertaken, that we are made aware of, we ensure our businesses are advised of. This is (as usual) ongoing work. Working with a BID community liaison team at Auckland Transport has ensured any issues are addressed extremely quickly.

## **Website**

- We continue to maintain our website [www.glenedenvillage.co.nz](http://www.glenedenvillage.co.nz) which allows visitors to view the site across multiple devices and includes information about what is happening in the area, a business directory for all members. This is supported by the Glen Eden Facebook page which links to other local businesses and acts as a portal for local social media activity.



# Local Board issues for discussion

- Vape shops
- Liquor licence application
- Power for CCTV cameras
- Potential BID Expansion
- Glen Eden Community led plan
- Level crossings
- Other areas for cooperation

# Questions?



COMMUNITY WAITĀKERE  
ANNUAL PRESENTATION - CONNECTED COMMUNITIES

Waitākere Ranges  
Local Board  
2022 / 2023

Presented by Aroha Te Namu

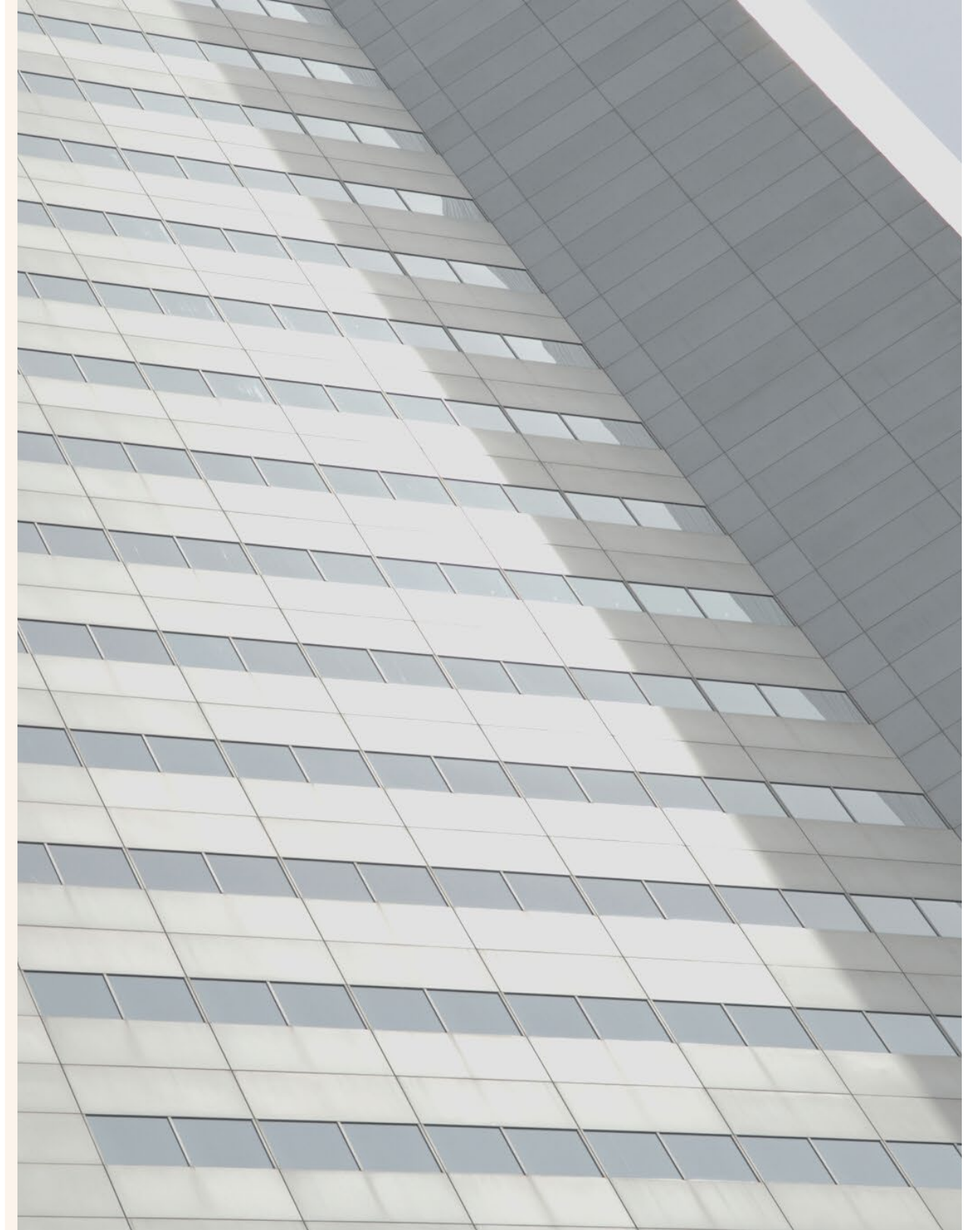


# Our vision is empowered West Auckland communities

---

## WE DO THIS THROUGH:

- Building capacity and connecting communities to each other
- Strengthening connections through placed-based initiatives
- Nurturing resilience
- Supporting and coaching for community-led change





# What We're Working On

## BUILDING CAPACITY TE AU O TE KOOPUA

- Te Au o Te Koopua shared space
- Digital networking
- Community up-skilling



## BUILDING CAPACITY COMMUNITY LEADERSHIP

- Swanson and Westlight
- Fundholding support
- Le Moana West Collective
- West Auckland Māori Thought Leadership Collective
- Coastal communities
- He Hononga Hapori
- He Kete Rauemi
- Future Proofing

## PLACEMAKING URBAN NEIGHBOURHOODS

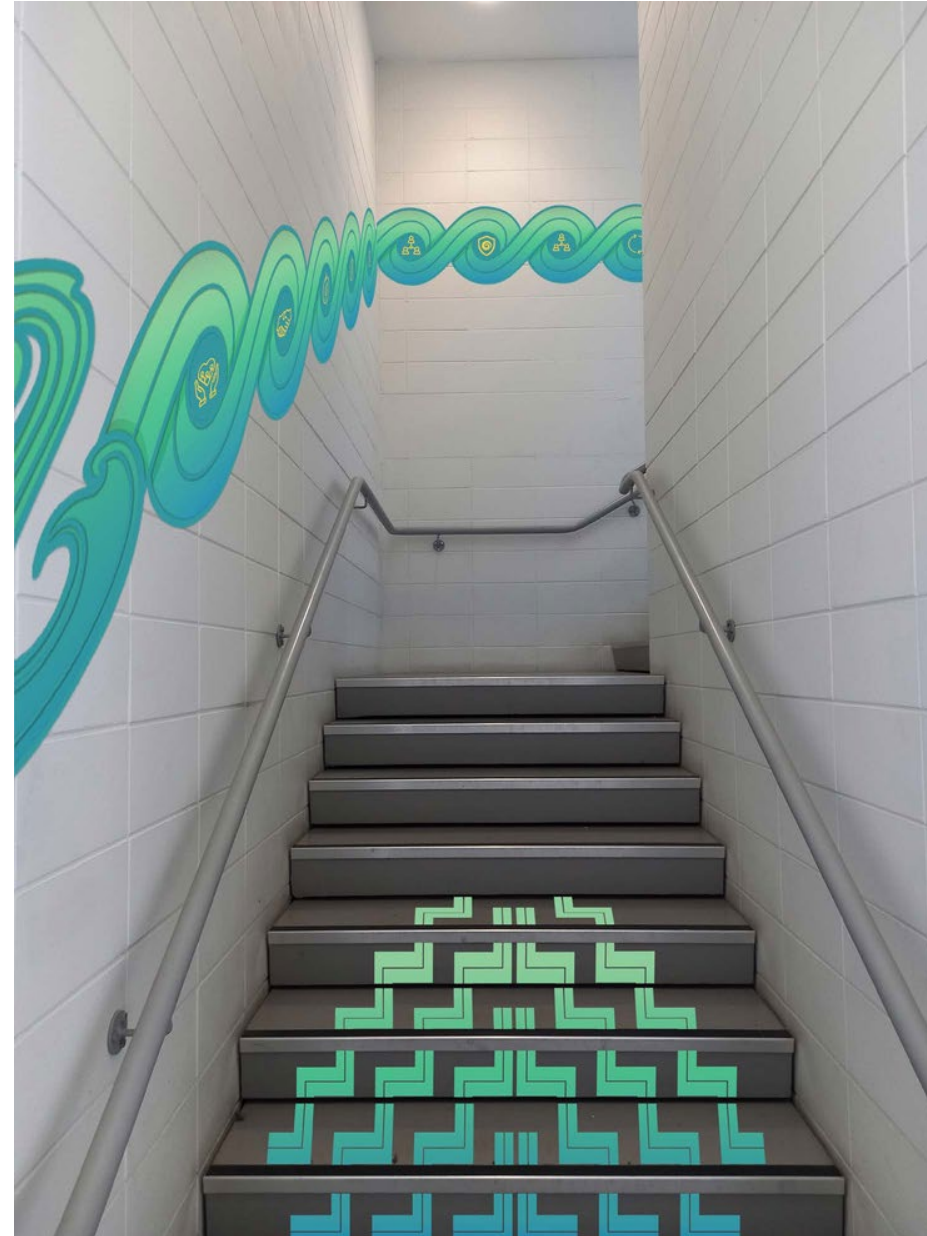
- Community engagement
- Coaching
- Civic engagement

## PLACEMAKING NEIGHBOURS AOTEAROA





# Te Au o Te Koopua



After seismic strengthening, and flooding effects, our shared space is thriving again with bookings averaging 90% capacity.

## UP-SKILLING AND TRAINING

Hosting topical workshops including:

- Governance, Finance and Management
- Māori competency, Rainbow communities and De-escalation training
- Software upskilling

Estimated 150-200 people reached from organisations around West Auckland including Waitākere Ranges

## DIGITAL INFORMATION HUB

Launch of our revamped website

Regular information-sharing to our newsletter audience of just over 1,000

# Community Leadership



## WESTLIGHT

Co-design with Home and Place an engagement calendar of local stakeholders and agencies. To activate the West Light residents support networks internally and externally.



# Community Leadership



## FUNDHOLDING

Community Waitākere provides fundholding for community good initiatives enabling start-ups and decreasing overheads for community programmes.

Current fundholding includes Whanaki Foundry, Community-led resilience, and Awhi Mai.

## CIVIC ENGAGEMENT

Engaged a facilitator to promote participation and submissions to Auckland Council budget process.

STATS NZ Census education for community on how and where to engage. Connected with West Auckland's Electoral Commission online education for community about the general elections, how to engage and where to engage.

# Community Leadership

## WEST AUCKLAND MĀORI THOUGHT LEADERSHIP COLLECTIVE

CW provides back bone support to this network of Māori community workers and leaders who meet monthly, coordinating community responses supporting civic engagement

## LE MOANA WEST COLLECTIVE

Working with local Pacific communities, leaders, organizations and local board Pacific forums. CW (funded by DIA) is supporting the development of a collective voice for Pacific communities based in west Auckland.





## HE HONONGA HAPORI OPEN DOOR DAYS

Ten themed network hui across three West Auckland local board areas.

Two/three in the Whau, three in Waitākere Ranges and four in Henderson-Massey.

Eight of the ten sessions were delivered with two cancelled due to storm response priority and bereavement.

Over the past year

- 177 people attended
- 99 organisations represented

## Community Leadership





## Community Leadership

### WEST AUCKLAND TOGETHER

We are an active participant and leader in West Auckland Together (WAT), "a collective of community organisations committed to working for Māori and Pasifika".

Founded on a history of strong collaboration and whakapapa of innovation, WAT aims to contribute to "a thriving West Auckland".

It is driven by five whenu (strands):

- Connected and resilient communities
- Relationships
- Māori and Pasifika people leadership
- Collaboration and collective mahi
- Capacity building

The WAT collaboration, with Community Waitākere, have recently focused on:

- West Auckland community funding streams research
- Kai Sovereignty
- Māori Thought Leadership Collective
- Flood relief activities coordination (information, advocacy, welfare, food and support)
- Community welfare response to flooding research project (in progress)



# Neighbours Aotearoa



## REACH

Distributed to locals via our newsletter, local social media groups, word of mouth through our kaimahi and partners.

## UPTAKE

Applications far exceeded the funding provided and Community Waitākere contributed significant costs to ensure successful outcomes

## OUTCOMES

2,378 neighbours were driven to connect following the trauma of the weather events in Waitākere. Feeling a sense of belonging and wellbeing were elements frequently mentioned post-survey

Thanks!



QUESTIONS  
WELCOME

EMAIL ADDRESS

[arooha@communitywaitakere.org.nz](mailto:arooha@communitywaitakere.org.nz)

PHONE NUMBER

022 504 3005





Community Waitākere

2022 -23 Pekapeka Summary for the Waitakere Ranges Local Board

---

# PEKAPEKA TOU ROA

## New Zealand Long Tailed Bat

*(Chalinolobus tuberculatus)*

---





## Overview

Community Waitakere are working to raise community awareness, build community capacity and gather data on the location and movements of Pekapeka (long tailed bats) across the Waitakere Ranges Local Board area. This is achieved through a combination of bat walk events in partnership with local groups, upskilling local conservation champions on bat survey techniques, and identifying new projects and funding opportunities. The purpose of the project is:

- To gather important data on the location and movements of Pekapeka on the periphery of Te Wao Nui a Tiriwa, Waitākere Ranges
- Raising profile and awareness of pekapeka and their plight across the local and wider community region
- To share information with landowners on how to make their properties more 'bat friendly' places
- Helping to co-ordinate and increase pekapeka conservation and advocacy efforts across the region
- To develop an increased knowledge/understanding of pekapeka in the region and develop robust, sustainable, and accessible data collection

## Pekapeka Walks

The premise for our pekapeka walks is to work alongside existing community groups and assist them to lead bat walks within their own communities. The longer-term aim is for these groups to become self-sufficient and eventually run their own events without needing our staff support, only provision of equipment and support material. Another outcome we were seeking was to find local project champions who we could work alongside and train to be able to carry out the more technical bat surveys using specialist recording equipment.

Due to the weather events on Jan 23' our Pekapeka Walk programme was impacted heavily, with 6 out of 8 planned pekapeka walks cancelled. Unfortunately, significant amounts of planning had been carried out both internally and with the groups involved. While a lot of effort was made to look at postponing events, cancellation for most of the walks was the only option due to regional park closures, local road closures, and a shift of community focus.

**Ark in the Park** - Feb 22/ Feb 23 (raindate), changed to March 27/ March 28 **Cancelled** due to not being able to run walks in Regional Parks.

**Ōpanuku Bird Song** - Feb 28th/ March 1st (raindate) with Whitebait Connection **Cancelled** due to flooding. Offered to host one on private land nearby, property was damaged due to cyclone (tree and h& s issues).

**Henderson Valley Primary** - March 7th, March 8th (raindate) **Cancelled** due to flooding damage

**Pest Free Piha** - March 15th, March 16th (raindate) with Whitebait Connection **Cancelled** due to flooding/ cyclone damage and road access issues for CW staff

**Ngāhere wānanga with Te Kawerau a Maki** - Planned for March 25th. **Cancelled** due to impacts of flooding. TKaM invited to March 24th event.

**Community Waitākere –Pekapeka Summary for the Waitakere Ranges Local Board 22'-23'**



**Awa, Ngahere, Pekapeka** – Collaborative event with MPHS. An event for local teachers to learn about the Waitakere Ranges and develop ideas around experiential education opportunities. **Postponed due to weather** until late '23.

**Pekapeka and Pūrakau** – March 24<sup>th</sup>, Public event, 22 attendees from the local community. March 25<sup>th</sup> – 24 attendees from Te Kawerau ā Maki and Opanuku Birdsong

These two walks were able to proceed after we postponed the events and gained special permission from Regional Parks to proceed with the events on the Lower Opanuku Pipeline track.

These evening hikoi were designed to share stories of Te Wao Nui ā Tiriwa, and the cultural aspects of pekapeka, the forest and night. The night hikoi was delivered by Community Waitakere’s Sophie Barclay and Rikki Bennett.

Te Kawerau a Maki is at Opanuku Road, Henderson Valley. 25 March at 8:48 AM · Auckland · 🌐  
 What a lovely way to end a busy week with some Pekapeka and Pūrakau with Sophie Barclay from Community Waitakere and our dear friend Rikki Bennett.



**Pekapeka & pūrākau**

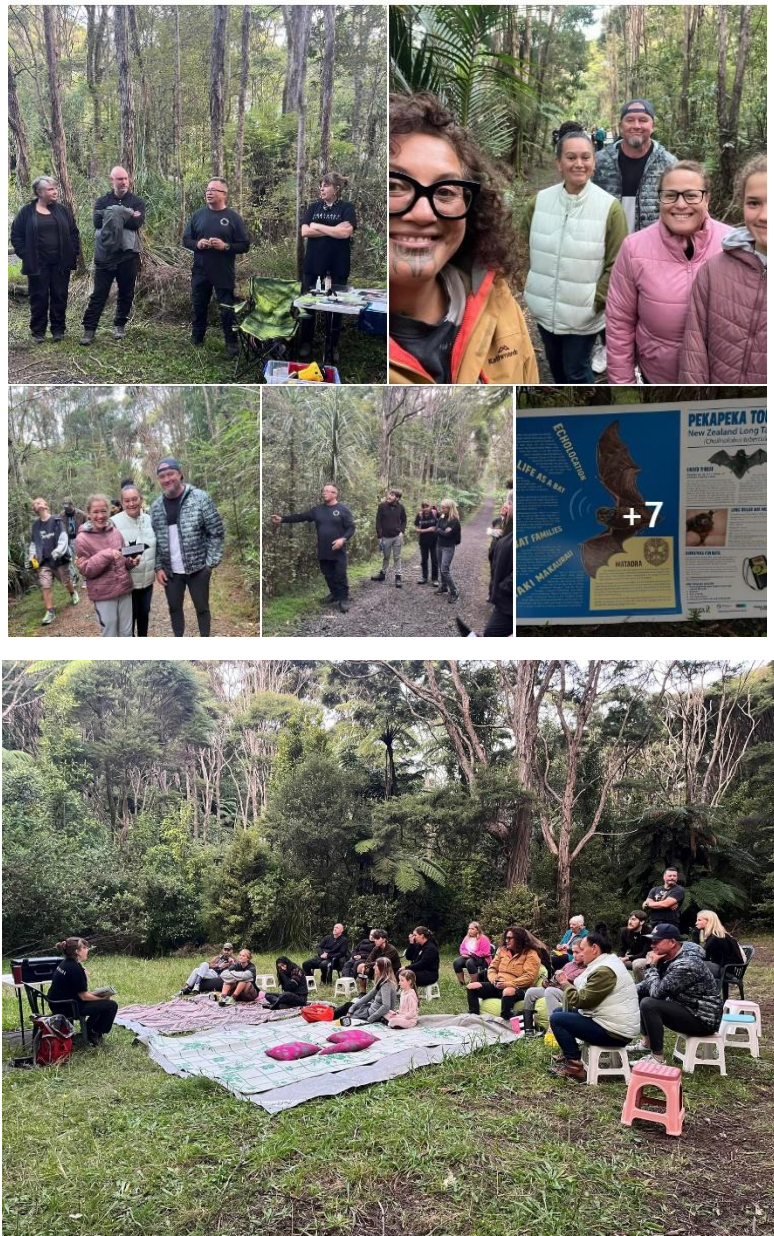
Learn about pekapeka and stories of Te Wao Nui a Tiriwa with Riki Bennet & Sophie Barclay

**Fri 24 March 6.30 - 9PM**  
**Opposite 64 Mountain Road (Opanuku pipeline track)**

**FREE** for members of Pest Free groups based in Te Wao nui a Tiriwa.

RSVP [sophie@communitywaitakere.org.nz](mailto:sophie@communitywaitakere.org.nz)





Community Waitākere –Pekapeka Summary for the Waitakere Ranges Local Board 22’-23’



## Building Bat Survey Skills in local conservation groups

As part of our overall Community Waitakere Strategy we aim to build skills and capability within communities. We achieve this in our work with pekapeka through training and upskilling local pekapeka champions who want to learn how to find out if there are bats in their project areas or communities.

Using specialist ultrasonic recording equipment we can gather data from a site over a number of weeks in order to determine levels of pekapeka activity. Little is known about the pekapeka outside of the Waitakere and Hunua Ranges but we are now finding significant levels of bat activity outside of these well-known and relatively protected pekapeka strongholds.

## Pest Free Piha Survey

This survey was carried out across private properties at the top of Piha hill. Initial training had been provided by Community Waitakere staff on how to deploy the bat logger (the ultrasonic recording device) to the Pest Free Piha coordinator.

In total 7 loggers were installed across 3 private properties, with bats being recorded across 3 of the 7 sites. Pekapeka were recorded foraging and feeding along a stand of native forest on the edge of a paddock on two separate nights. The Pekapeka recordings occurred not far from an area where a lone bat was recorded in May last year.

Albeit the survey didn't show a huge amount of activity, this survey was done in the middle of winter when bats are potentially active, and even a single recording shows us that bats are using this area as habitat, therefore we need to continue, or increase our efforts to protect and enhance the area. The below screenshot is an article written by Community Waitakere for the Pest Free Waitakere Ranges Alliance website, link [here](#).



Long tailed bats have been detected for the second time in Piha!

It's been a wet winter so far to say the least, but during a recent fine spell, Dudley Bell from Pest Free Piha and Chris Burton from Community Waitakere worked with landowners to deploy several specialised ultrasonic bat recorders along bush edges at the top of Piha Hill. Despite the cold conditions, Pekapeka were recorded foraging and feeding along a stand of native forest on the edge of a paddock on two separate nights. The Pekapeka recordings occurred not far from an area where a lone bat was recorded in May last year.

"The fact that bats have been recorded again in Piha is great news" "It really shows how important all our community efforts are to protect the local environment" says Bell.

### **Ongoing support for Pekapeka Surveys**

Through our approach of supporting groups and organisation to lead bat surveys we continue to support different organisations with their survey efforts. During the 22-23 financial year Community Waitakere staff continued to support pekapeka survey efforts for Ark in the Park with the provision of equipment, troubleshooting and advice.

We have also continued to support survey efforts at Matuku Link through the provision of support, training, and equipment. This has included training in logger deployment, data analysis and a general presentation about pekapeka delivered as part of an onsite event.

Our initial plan was to expand the numbers of trained volunteers involved in local conservation projects who were able to carry out bat surveys in their project areas. Unfortunately, due to ongoing park closures and the cancellation of the majority of our bat walks, this was not achievable at this time. We may revisit this approach in 23-24 but will approach with caution due to the potential risk of another round of cancellations.

### **Pekapeka Education Programme Development**

Community Waitakere have developed tools and resources that provide authentic school-based learning experiences for all age groups. This includes presentations, activities, and hands on experiences that engage and inspire learners about pekapeka. This approach was trialed with a Year 7&8 class at Glen Eden intermediate school. The aim was for learners to gain real world skills in bat surveying, learn all about pekapeka, and become community pekapeka protectors through provision of information to the wider community.

We delivered an initial workshop, leaning all about pekapeka from a presentation as well as activities on how to use a handheld bat detector. Students then went on a field trip in their local park to install bat detectors, and also made habitat observations, took gps coordinates and photos of the area.

10 days later we reviewed all of recordings, but unfortunately no bats were recorded. Although this was not unexpected due to the time of year. The main focus was to set up the survey locations, and for the students to then write up a report based on the survey, leaning how to use the equipment along the way. Students then develop information flyers that were dropped to local residents talking about pekapeka, and the importance of keeping pat cats inside.

The following collateral and resources have been developed to support further schools programmes:

- An image rich presentation that can be used for a range of audiences
- Prop roost tree that students can have turns at finding roosting spots for small toy bats
- Craft activity to make hanging bat mobiles
- Ecological report template for students to populate their survey results and observations
- Games to teach about echolocation, and bat navigation



Community  
[chris@comn](mailto:chris@comn)

Summary for the W





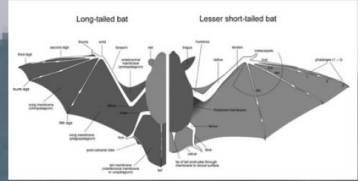


# Bats

## Facts

Long-tailed bats were common throughout New Zealand in the 1800s, although by 1900–1930 they were becoming scarce in many districts. Surveys over the last 10–20 years indicate South Island long-tailed bats are rarer than previously thought. They were once common in Dunedin, Invercargill and Christchurch, where they roosted under the wooden bridges across the Avon River until 1885. Causes of their decline are combinations of:

- clearance and logging of lowland forests
- cutting of old-age trees for firewood
- clearance of trees for urban expansion and agricultural intensification
- predation by introduced animals such as cats, possums, rats and stoats
- exclusion of bats from roosts by introduced mammals, birds, wasps and human interference.



**HUNTING**  
LONG-TAILED BATS HUNT BY HAWKING, OR CAPTURING AND CONSUMING AERIAL INSECTS WHILE FLYING. FLIES ARE THEIR MOST SIGNIFICANT FOOD SOURCE, WITH MOTHS AND BEETLES ALSO IMPORTANT. THE BAT IS AN INSECT GENERALIST, CONSUMING INSECTS THAT ARE ABUNDANT IN THE LANDSCAPE.



## Facts and an overall about bats

The long-tailed bat (*Chalinolobus tuberculatus*) belongs to a widespread family and is closely related to five other species of wattled or lobe-lipped bats in Australia and elsewhere. Long-tailed bats from the North Island and South Island were confirmed in 2018 as one species. It has the highest threat ranking of Nationally Critical. Long-tailed bats are widely distributed throughout mainland New Zealand, Stewart Island, Little Barrier and Great Barrier islands and Kapiti Island. They are more commonly seen than short-tailed bats as they fly at dusk along forest edges and because some populations have persisted in urban and rural landscapes.

- Long-tailed bats are smaller than the short-tailed bat, chestnut brown in colour, have small ears and weigh 8–11 grams.
- They are believed to produce only one offspring each year.
- Their echo-location calls include a relatively low frequency component which can be heard by some people, though most calls are at a frequency of 40 kHz which is higher than people can hear.
- They can fly at 60 kmph and a bat colony can have a range of more than 100 km<sup>2</sup>.
- An aerial insectivore, they feed on small moths, midges, mosquitoes and beetles.

**Diet**  
Their diet consists of insects, fruit, nectar and pollen. The short-tailed bats are thought to be an important pollinator of the *Dactyloctenium* or wood rose. This is a threatened parasitic plant which grows on the roots of trees on the forest floor.

We put out bat loggers in the morning with the microphones turned on. We will drill them into the trees and leave them until we return around a week later. After returning we will bring them back to class where we extracted the SD card and inserted it into the computer. We will use an app called Caldeoscope to listen to the recording. After listening to the recordings we will review the recording and attempt to identify what animal made the noises in the recordings.



## The next step

To continue our learning we will ask the council for permission to set up some pest monitoring at Kawa Glade. When we tried to record bats but instead we only recorded rats and possums. We might make bat boxes, to encourage bats to live at Kawa Glade. Bat boxes are wooden boxes that you put high up in trees on top of a metal band to protect them from pests.

## Thanks to:

Chris Burton from Community Waitakere for teaching us about bats and helping us attempt to record bats. Miss Johnson for giving us this amazing opportunity to learn about something new and exciting outside of the classroom.

## Who we are

Hi, we are Room 25 at Glen Eden Intermediate. We have been learning about bats in New Zealand this term for our Inquiry and wanted to share our learning with the community. Did you know that we have two species of bats in NZ, the long tailed and short tailed?

## Our goal in this project

Our goal in this project was to learn about bats and to see if there are any bats in the local walkway Kawa Glade. We wanted to learn how to use bat loggers and hand held bat trackers to find bats. And of course we wanted to get out and about in the community.



## Bats in NZ

Amy D & Willow L

## Project Development and Capacity Building

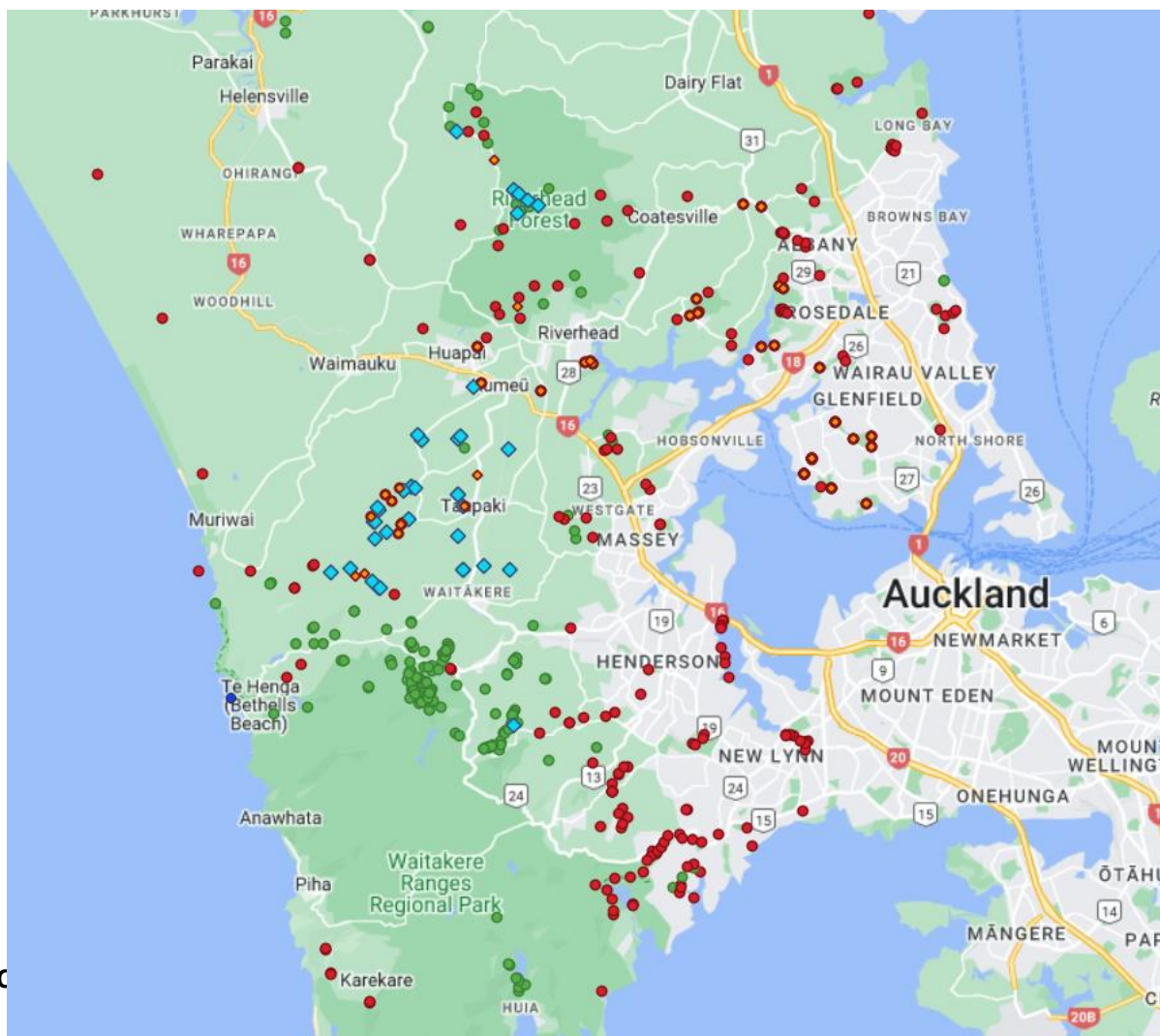
### Ongoing Collaboration with Kaipatiki Project - Where are the bats?

A key question that came out of the Auckland Regional Bat Alliance was 'Where are the bats?'. This question is specifically about better understanding bat activity in the rural areas of Auckland, and determining how they are using this landscape. Traditionally most talk about bats has been confined to the Waitakere and the Hunua Ranges.

Through our collaborative approach with the Kaipatiki Project, we have discovered that the rural farmland areas that span between the Waitakere Ranges up to Riverhead Forest are full of bats. Previously little was known about their presence in these areas, but surveys on private land have shown high levels of bat activity almost everywhere surveys are carried out. This has been funded by a CCF grant but crosses over into our WRLB pekapeka project.

This shows that these rural areas may be equally important to ensure long term viability of bat populations in the Auckland Region. The same discoveries are being made across the Franklin district in the South. The map below shows new survey locations, with the blue triangle representing a new survey site where bats have been detected as part of this joint effort.

Although some of these are outside of the WRLB, the wider work is very relevant to overall conservation, and assist to continue to answer the question 'Where are the bats' as well as moving on to the next question 'how are they using this habitat'. CW and KP will continue to seek funding to support this survey work with private landowners as part of our wider pekapeka mahi.





### **DOC Community Funding Application**

A joint funding application was made to the DOC community fund to expand the reach of the pekapeka work. This was developed in collaboration with Kaipatiki Project and Pest Free Waitakere Ranges Alliance. The aim of the project was to expand survey and engagement efforts across a wider area. High level outcomes were to better understand how bats are using the landscape especially in the rural areas with small bush fragments engage more residents in pekapeka protection on their own properties.

Unfortunately, the application was unsuccessful, with most projects that received funding being place based, with clear and easy to measure outcomes rather than the more exploratory nature of project like ours. While this is a disappointment, it has also cemented our collaborative approach and helped to shape our future thinking for this type of project.



# LTP / LBA workshop 2

## performance measure framework review

David Rose, Lead Financial Advisor

12 October 2023





# Overview of today's session

- Purpose
- What are local performance measures and why we do them
- Current state and future state
- Detailed approach: Core and tailored measures
- Next Steps





## Purpose of today's workshop

- Provide context on local performance measures
- Inform local boards of plan and progress to date
- Seek local board feedback on tailored measures



# Consultation not required for performance measures

Performance measures are a tool to measure levels of service. They do not need to be consulted as part of the LTP or Annual Budget consultation process as they reflect service level decisions made by local boards.

Decisions to start or stop services, or change levels of service, will be part of the work programming and local board agreement processes. There will be public consultation for the local board agreement, the results which may inform the work programme development.



# What are local board performance measures?



# Have we seen local performance measures before?

## YES!

In your **Local Board Agreement** and **Local Board Annual Report**

Scope of today's workshop:

1. Performance measures which are formally published in council's external plans and reports for local boards.
2. Delivered within a local activity (community, environment, governance, planning)

They are audited and checked for legal compliance each year.



CONTROLLER AND AUDITOR-GENERAL  
Tumuaki o te Mana Arotake



PARLIAMENTARY  
COUNSEL OFFICE  
TE TARI TOHUTOHU  
PAREMATA

New Zealand Legislation





# What and why?

**Performance measures** are a legislative requirement under LGA 2002 (s 261B) and LGACA 2009 (s 21)

Legislation says a performance measure will:

“enable the public to assess the level of service for major aspects of an activity”

What does this mean?

1. A way to measure levels of service for local board activities
2. Measure only major services, not everything
3. Local Boards need to set service levels in Local Board Agreements and report against agreed service levels in the Annual Report



**Current state, and how performance measures should look going forward.**



# Not all measuring service levels

**Current set is a mixture of outcome, service and business measures – difficult to describe the impact on service level due to increase/decrease of funding**

## Existing local measures



Less of

### Outcome measures

#### Measure outcomes:

- Council is one of many contributors towards that outcome
- Not possible to attribute Council's contribution

#### Examples:

- The percentage of residents participating in sport and recreation
- Percentage of Aucklanders that feel their local town centre is safe

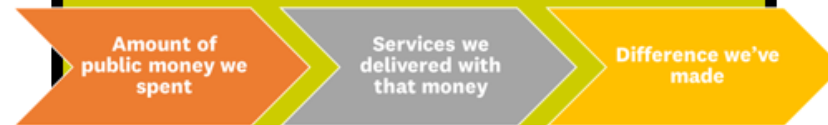
## New local measures



More of

### Service measures

Measure service level (commonly include quality, quantity, timeliness)



Critical to establish a set of measures (within Council Group's control) that can set targets against climate investments ahead of the next LTP

## Existing local measures



Less of

### Business measures

#### Measure internal performance:

- Metrics that help improve business performance

#### Examples:

- Customer utilisation
- Customer satisfaction
- Percentage of programme delivered on time and on budget

**Service measures will help answer the question:  
“What do local boards do with their money?”**



# Local performance measures should:

- Meet legislative framework
  - Focusing on major local services and service levels.
- Reflect local board increased decision making
  - local boards have decision making over service levels of local activities  
(subject to the Governing Body minimum service levels)
- Reflect local priorities set out in the Local Board Plan 2023
  - Major services or focus areas in the next 3 years are informed by high priorities in LBPs, and each local board has different priorities.





## How could it be useful for local boards?

1. Formalise publicly the service levels for major local services
2. Demonstrate how the local board intends to achieve outcomes
3. Future proofed for changes in delivery models (different ways of delivering)



# Steps to develop a local performance measure

1. Identify major **services** within each local activity (community, environment, governance, planning)
2. Define the level of **service** for each major service
3. Identify the existing level of **service** using 2023/2024 to form a baseline
4. Include these level of **services** as performance measures

**Not every single initiative needs to be measured!**



# **Approach to local board performance measures**



# Local Board measures approach - Core

We intend to introduce two categories of measures, Core and Tailored.

## Core (ABS type) (approx. 8 measures)

- Traditional local government services, such as local parks and open spaces, libraries, pools/indoor leisure, BID programmes
- Financially significant (requires a lot of money)
- Service is unlikely to completely stop in the next 3 years

For local boards, most of the core services are delivered by Customer and Community Services. Staff are currently investigating appropriate ways of communicating service levels.





# Local Board measures approach - Tailored

## Tailored (LDI type) – seeking local board direction

As this is the first time doing tailored measures, we would like to start small.

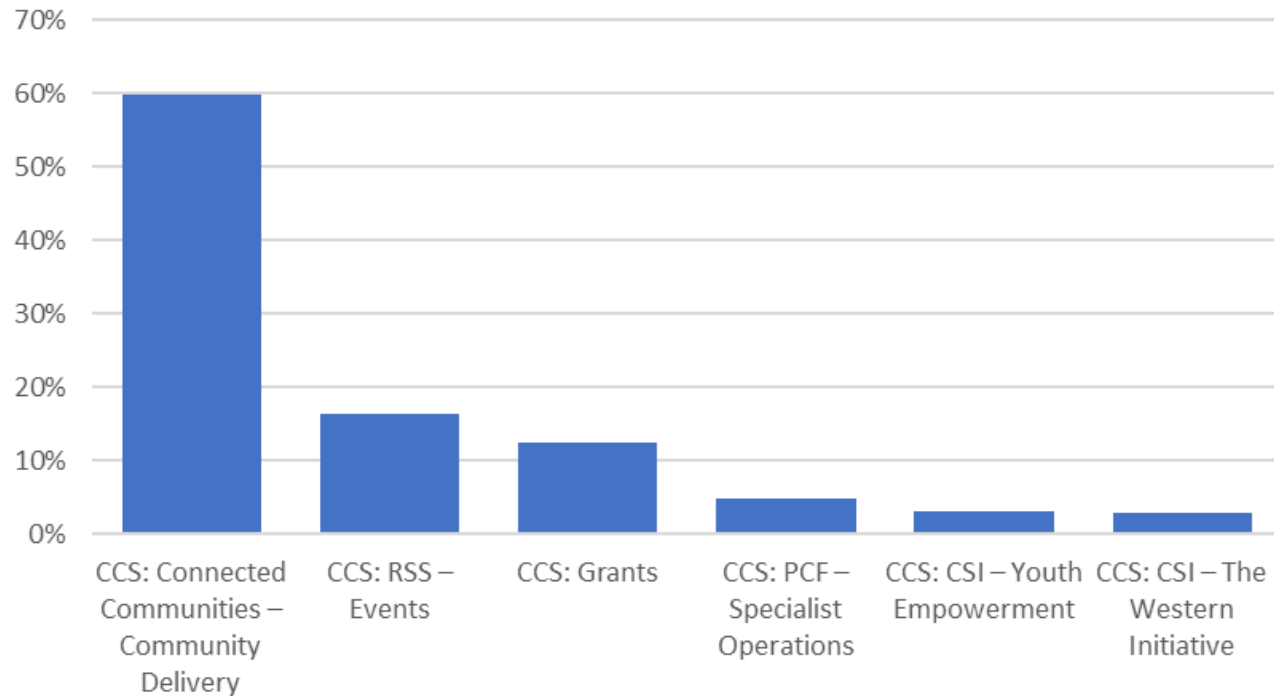
|                     |  |
|---------------------|--|
| Local Community     | 2 - 3 tailored measures  |
| Local Environmental | 1 - 2 tailored measures  |
| Local Governance    | 0 - 1 tailored measure   |
| Local Planning      | Nil – very little capacity to continue economic development work |

We recommend tailored measures be driven by top priorities in your local board plan. Why? Consistent service delivery and measurement.

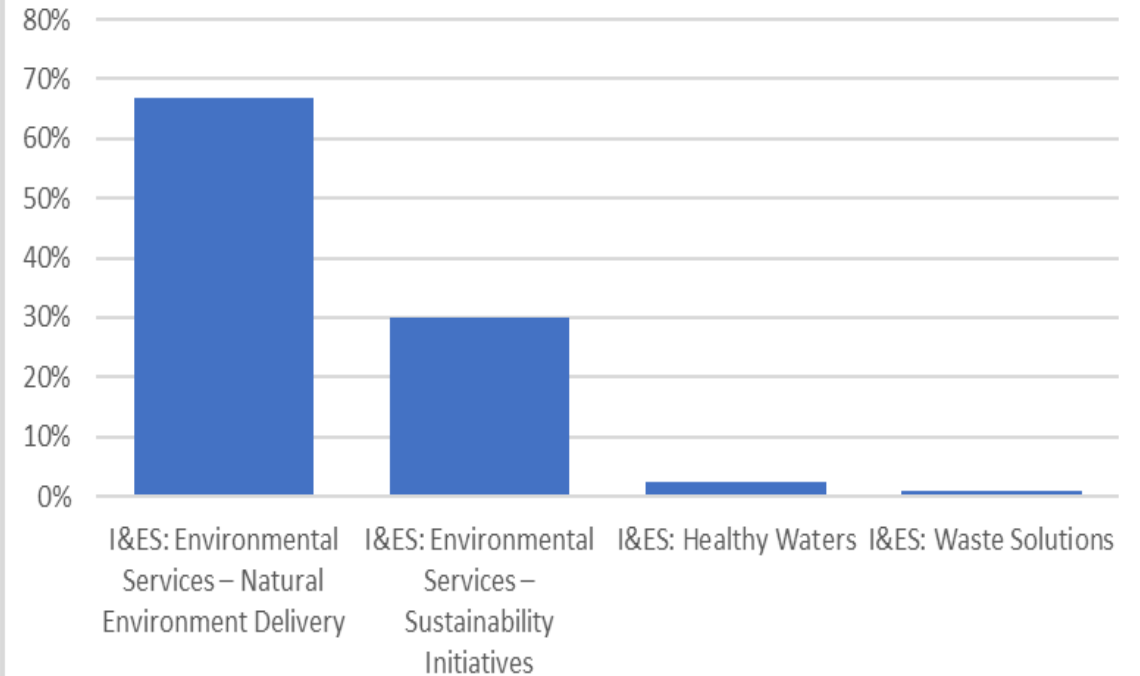


# Local Board spending profile (2023/2024) - LDI

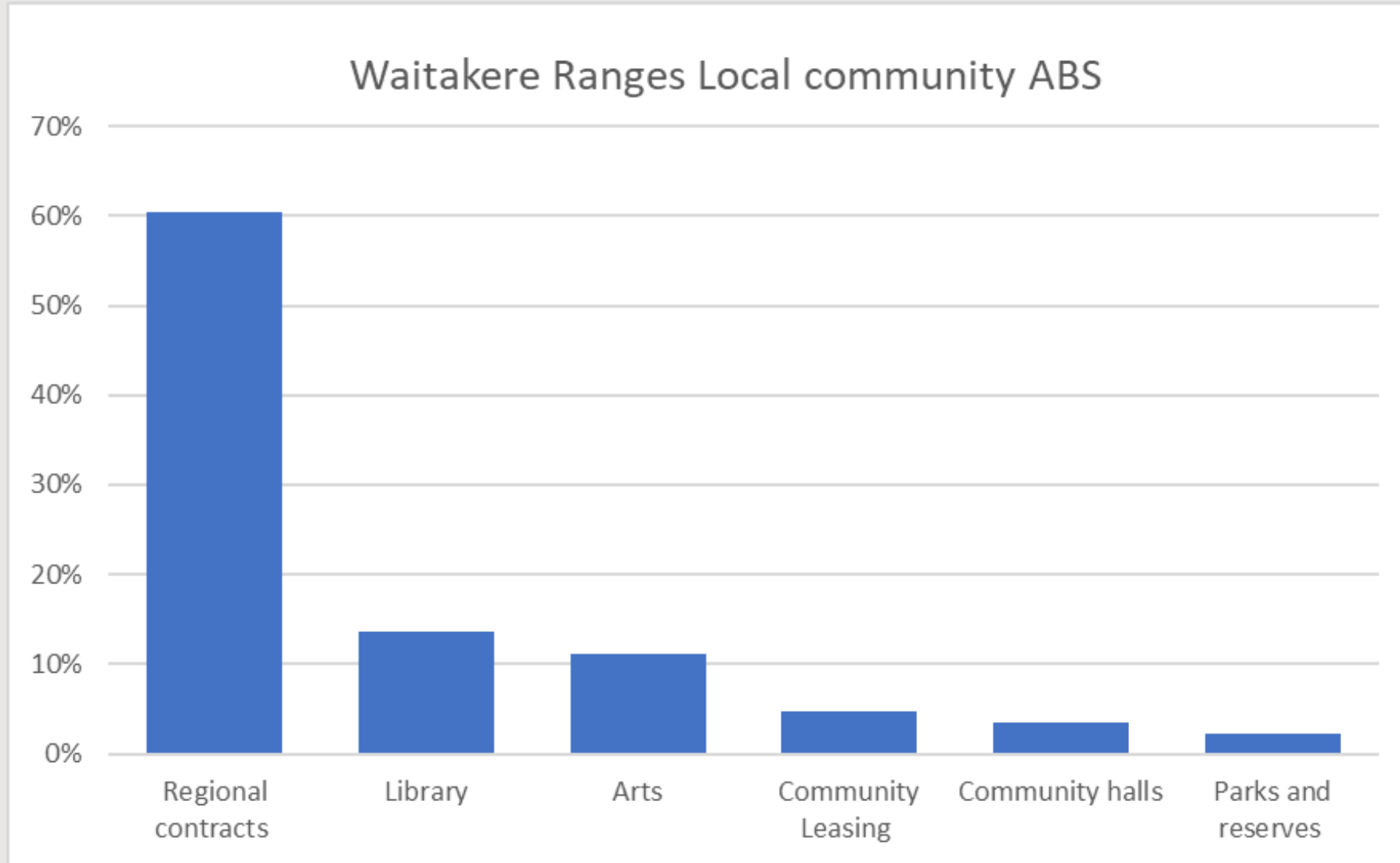
## Waitakere Ranges Local Community



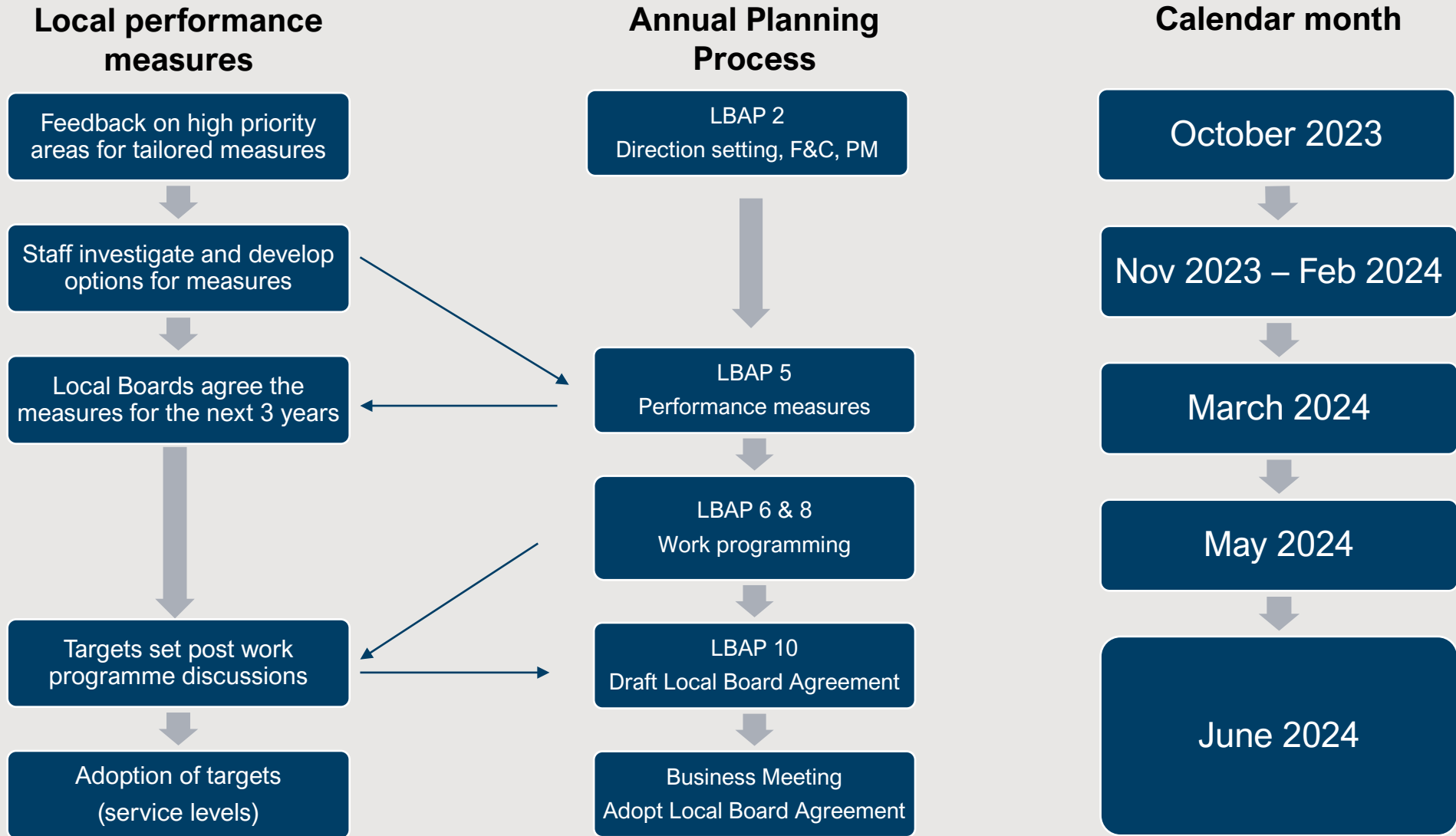
## Waitakere Ranges Local Environment



# Local Board spending profile (2023/2024) - ABS



# Timeline







**Return feedback  
to your LFA by  
3 November 2023**

**Workshop staff  
recommendations  
for measures  
March 2024**



## Next steps

Core measures – staff currently developing service level measures

Tailored measures – staff to analyse board feedback, investigate and develop possible service measures

Measure recommendations for Core and Tailored presented to local boards in a workshop in early March, and local boards select their set of Tailored measures



# Fees & Charges Review

Waitakere Ranges Local Board

October 2023



# Venue Hire & Bookable Spaces Fees proposal - phase one: Key elements of proposal:

- Adjusting fees in line with Hire Fee Framework July 2014
- There are no significant changes for this local board
  - i.e. nothing over/under 5%

**Total fees considered = 252**

50% - No change proposed  
39% - Minor changes proposed  
7% - increases proposed  
4% - decreases proposed

|   | Peak        |                                     |                      |               | Off-peak    |                                     |                      |               |
|---|-------------|-------------------------------------|----------------------|---------------|-------------|-------------------------------------|----------------------|---------------|
| Category   Name   Description                         | Max of FY24 | Max of FY25<br>(Prior to inflation) | Sum of amount change | Sum of Change | Max of FY24 | Max of FY25<br>(Prior to inflation) | Sum of amount change | Sum of Change |
| ▣ Venue Hire  |             |                                     |                      |               |             |                                     |                      |               |
| ▣ Ceramco Park Function Centre<br>Main Hall           | \$39.50     | \$40.00                             | \$0.50               | 1%            | \$31.80     | \$32.00                             | \$0.20               | 1%            |
| ▣ Titirangi War Memorial Hall<br>Main Hall            | \$45.50     | \$45.60                             | \$0.10               | 0%            | \$36.20     | \$36.50                             | \$0.30               | 1%            |
|   | Commercial  |                                     |                      |               | Community   |                                     |                      |               |
| Category   Name   Description                         | Max of FY24 | Max of FY25<br>(Prior to inflation) | Sum of amount change | Sum of Change | Max of FY24 | Max of FY25<br>(Prior to inflation) | Sum of amount change | Sum of Change |
| ▣ Community, Arts Centres and Bookable Library spaces |             |                                     |                      |               |             |                                     |                      |               |
| ▣ Glen Eden Library<br>Meeting Room                   | \$26.60     | \$27.00                             | \$0.40               | 2%            | \$13.20     | \$13.50                             | \$0.30               | 2%            |



## Next steps:

- October business meeting - Local board feedback to the Governing Body on local and regional fees and charges proposals
- November – Governing Body workshop on consultation material
- December – Governing Body business meeting
- Jan to Feb 2024 – consultation period
- April 2024 - workshops with local boards
- June 2024 - adopt local board agreements





# Local board feedback to governing body on local fees and charges proposals

| Business Area                           | Category | Proposals   | Local board feedback |
|---|----------|---|----------------------|
| <b>Venue Hire &amp; Bookable Spaces</b> |          | <b>Proposal :</b> Adjusting fees in line with Hire Fee Framework July 2014 <ul style="list-style-type: none"><li>• Fees for comparable venues are appropriate in accordance with the framework</li><li>• No significant impacts on community groups expected</li><li>• Discount framework applied to qualifying groups - 50% discount</li></ul> |                      |



## Next steps

- Draft local consultation material to be workshopped and approved in November
- Local board to feedback on LTP priorities to Budget Committee
- Staff will use direction setting to develop work programmes
- Draft work programmes will be presented for feedback at workshops in the new year



## Review of Performance Measures

A review of performance measures is underway as part of the Long-Term Plan process. The local board has been asked for direction on the development of tailored performance measures that respond to the new Waitakere Ranges Local Board Plan.

As background, the current performance measures are below.

### Current state

| <b>Annual Report Performance Measures (current)</b>  |  |
|--|--|
| <b>Local Environment Services</b>  |  |
| <b>We work with Aucklanders to manage the natural environment and enable low carbon lifestyles to build resilience to the effects of climate change</b>  |  |
| 1  | The percentage of local low carbon or sustainability projects that have successfully contributed towards local board plan outcomes                     |
| 2  | The percentage of local water quality or natural environment improvement projects that have successfully contributed towards local board plan outcomes |
| 3  | The percentage of local waste minimisation projects that have successfully contributed towards local board plan outcomes                               |
| <b>Local Planning and Development</b>  |  |
| <b>We help attract investment, businesses and a skilled workforce to Auckland</b>  |  |
| 1  | The percentage of Business Associations meeting their Business Improvement District (BID) Partnership Programme obligations                            |
| <b>Local Community Services</b>  |  |
| <b>Provide safe, reliable and accessible social infrastructure for Aucklanders that contributes to placemaking and thriving communities</b>  |  |
| 1  | Percentage of Aucklanders that feel their local town centre is safe – day time   |
| 2  | Percentage of Aucklanders that feel their local town centre is safe – night time   |
| <b>Utilising the Empowered Communities Approach, we support Aucklanders to create thriving, connected and inclusive communities</b>  |  |
| 3  | Utilising the Empowered Communities Approach, we support Aucklanders to create thriving, connected and inclusive communities                           |
| 4  | The percentage of Empowered Communities activities that build capacity and capability  |
| <b>We provide safe and accessible parks, reserves, beaches, recreation programmes, opportunities and facilities to get Aucklanders more active, more often</b>   |  |
| 5  | The percentage of park visitors who are satisfied with the overall quality of sportsfields   |
| 6  | The percentage of users who are satisfied with the overall quality of local parks  |
| 7  | The percentage of residents who visited a local park in the last 12 months   |
| <b>We showcase Auckland’s Māori identity and vibrant Māori culture</b>   |  |
| 8  | The percentage of local programmes, grants and activities that respond to Māori aspirations  |
| <b>We fund, enable, and deliver services, programmes, and facilities (art facilities, community centres, hire venues, and libraries) that enhance identity, connect people, and support Aucklanders to participate in community and civic life</b> |  |
| 9  | The number of internet sessions at libraries (unique sessions over public computing or public WIFI networks)   |
| 10   | The percentage of local community services, programmes and facilities that are community led   |
| 11   | The percentage of arts, and culture programmes, grants and activities that are community led   |
| 12   | The percentage of art facilities, community centres and hire venues network that is community led  |
| 13   | The number of participants for local community services, programmes, and facilities  |
| 14   | The number of attendees at council-led community events  |
| 15   | The number of participants in activities at art facilities, community centres and hire venues  |
| 16   | The number of visits to library facilities   |
| 17   | The percentage of customers satisfied with quality of local community services, programmes, and facilities   |
| 18   | The percentage of attendees satisfied with a nominated local community event   |
| 19   | Percentage of customers satisfied with the quality of library service delivery   |

# All you wanted to know about Your Trusts

Waitākere Ranges Local Board  
2 November 2023



**the trusts**  
Keeping it local





# About Licensing Trusts

- A community ownership model whose primary function is to sell and supply alcohol
- Distribute surplus profits to the community and invest in assets
- Accountability to the community
- Borne out of prohibition
- First one was Invercargill 1942
- There were 30 and now only 15 operating
- Operating successful businesses
- 1972 – Establishment of Portage and Waitakere Licensing Trusts



Ethical



Sustainable



Accountable & Transparent



Community



Successful

the trusts  
Keeping it local





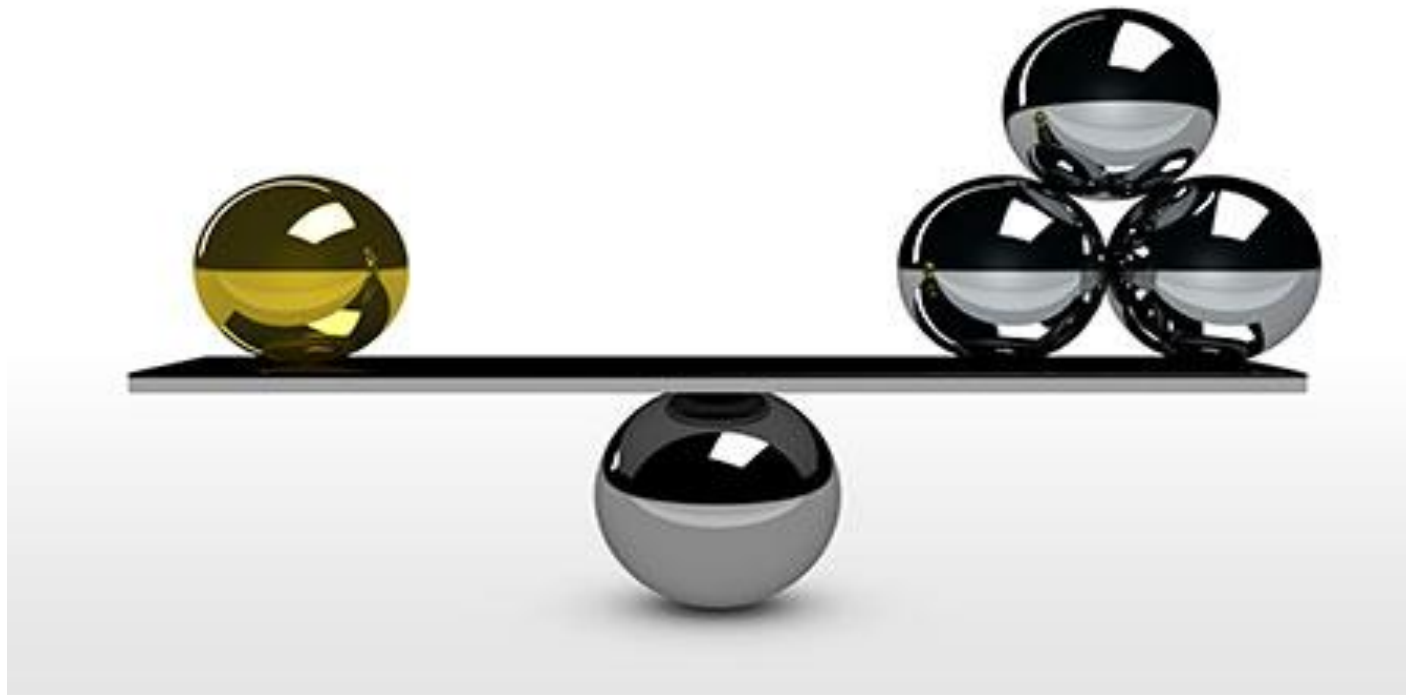
# Community vs Commercial



Commercial  
Strength

*Support*

Social  
Returns



Balanced operating model



Ethical



Sustainable



Accountable & Transparent



Community



Successful

the trusts  
Keeping it local





# Where and Who

## Portage Licensing Trust

**Area:** Glendene, Kelston, Glen Eden, Kaurilands, Titirangi, Laingholm, Parau, Cornwallis, Huia, Little Huia, Whatipu, Green Bay, New Lynn, Avondale, Waterview, Blockhouse Bay, New Windsor Owairaka

Leanne Taylor (President)  
Marcus Amosa  
Jacqui Harema  
Mark Beavis  
Ben Goodale  
Rob Hulse  
Darren Leckey  
Margi Watson  
Joe Bergin  
Ross Clow

## Waitakere Licensing Trust

**Area:** Whenuapai, Hobsonville, West Harbour, Waitakere Township, Massey, Red Hills, Henderson, Ranui, Swanson, Taupaki, Te Atatu Peninsula, Te Atatu South, Sunnyvale, Oratia, Waiatarua, Karekare, Piha, Bethells Beach

Linda Cooper (President)  
Jared Patterson  
Mark Allen  
Warren Flaunty  
Amanda Roberts  
Brooke Loader  
Sunil Kaushal

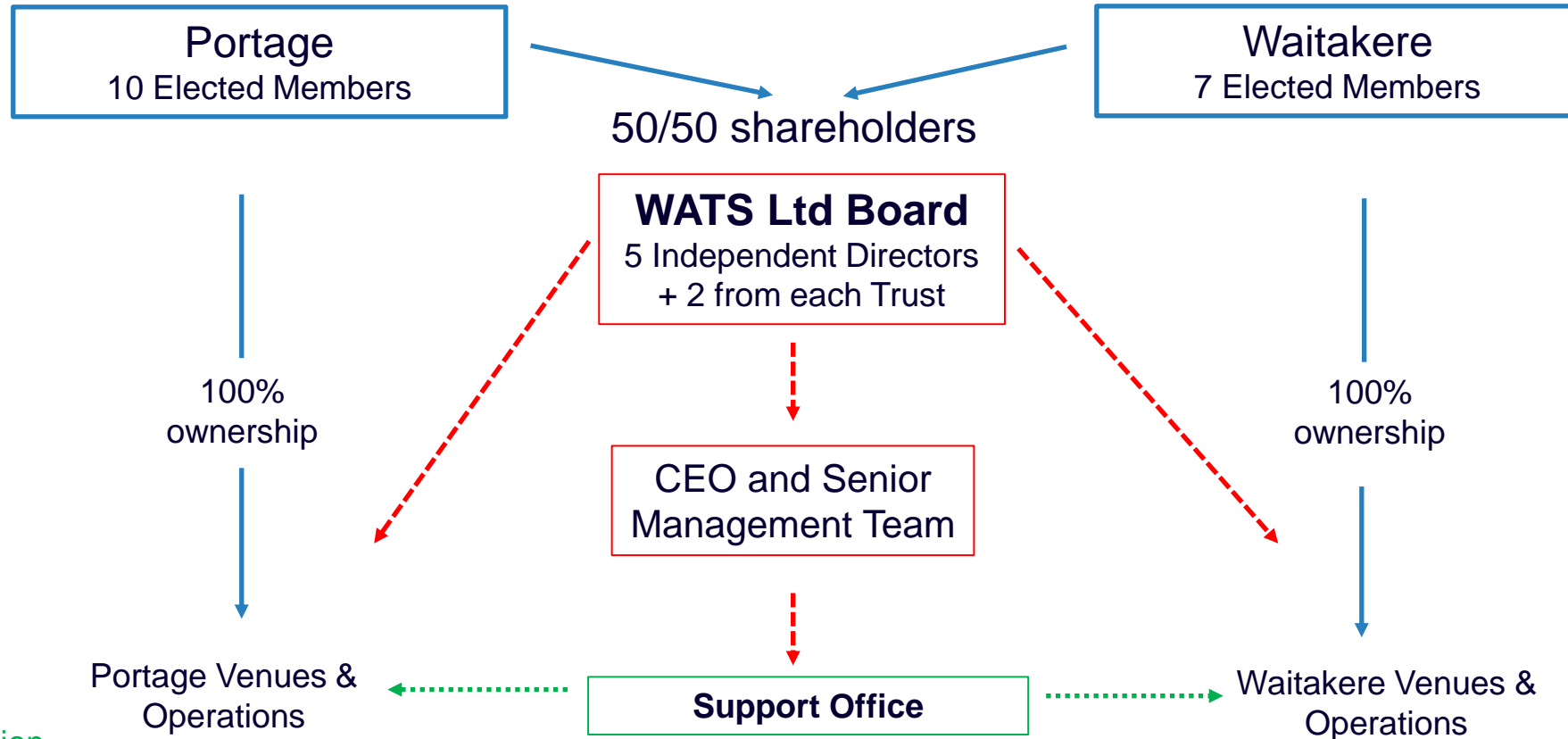


the trusts  
Keeping it local





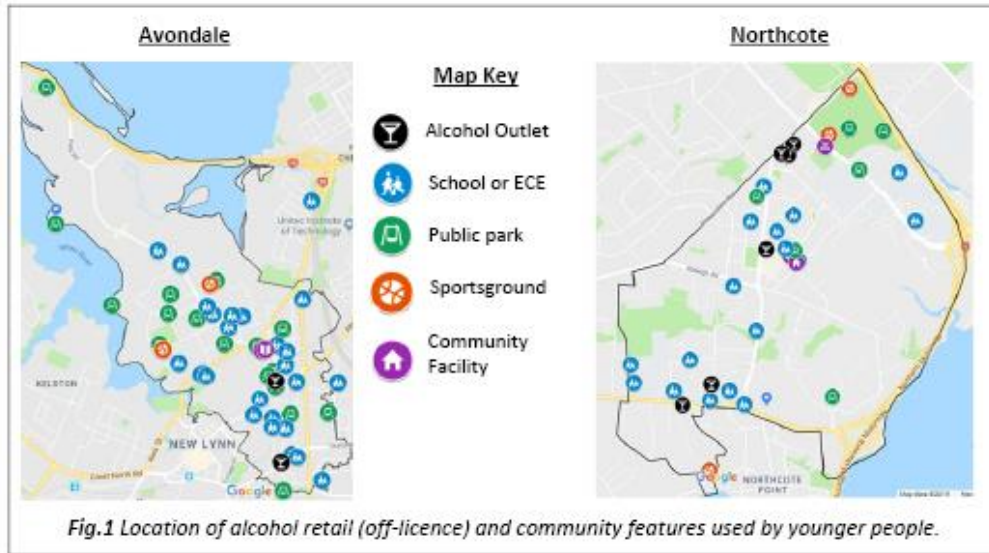
# The Trusts Ownership & Management Structure



**Key**  
Blue – Ownership  
Red – Management  
Green – Administration

# Our Purpose

*We exist to sell alcohol in a socially responsible way*



West Auckland has the **lowest number** of liquor stores per 10,000 people in Auckland city

|                              |             |
|------------------------------|-------------|
| <b>Western Auckland Zone</b> | <b>1.78</b> |
| Central Auckland Zone        | 5.22        |
| Northern Auckland Zone       | 5.76        |
| Southern Auckland Zone       | 2.10        |
| Invercargill City (ILT)      | 4.39        |



Ethical



Sustainable



Accountable & Transparent



Community



Successful

the trusts  
Keeping it local





# The Trusts' Strategy FY23-28

We exist to supply alcohol and hospitality in a socially responsible way.



Ethical



Sustainable



Accountable & Transparent



Community



Successful

the trusts  
Keeping it local







# Our Ambition<sup>!</sup>



Move from undersupplying the market, to meeting market needs (not oversupplying)



Increase sales to \$165m and profit to \$8-9m; distribute surplus profits



Get there responsibly, meeting community expectations on us as a social enterprise



Ethical



Sustainable



Accountable & Transparent



Community



Successful

the trusts  
Keeping it local





## Our Plan Principles

- Recognising that how we meet customer needs determines our success
- Remaining resolute in our role as a business with a social purpose
- Focusing on building our core business
- Ensuring we are meaningfully connected to and engaged with our community
- Making evidence based, informed decisions
- Working towards one shared ambition

## Our Priorities

- Investing in our core businesses so we are profitably providing the experiences, services, and products customers want
- Delivering to a focused network property strategy, increasing our operating footprint and ensuring properties are fit for purpose
- Managing our invested funds for value growth, reinvesting in core businesses as needed
- Building an effective Board/Trusts culture, between and within, incl. role clarity and discipline (shareholders, WATs, management)



Ethical



Sustainable



Accountable & Transparent



Community



Successful

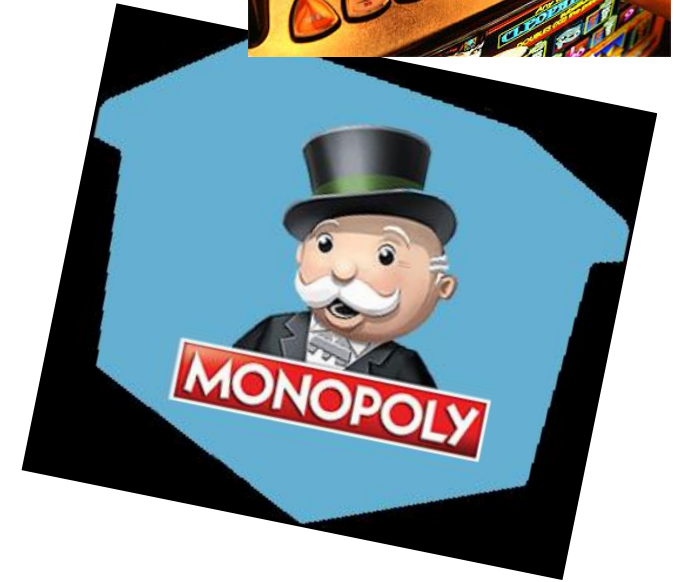
the trusts  
Keeping it local





# What the critics say.....

- The Trusts only give back from pokies, nothing comes from their own business.
- The Licensing Trusts control who gets a liquor license out west. They can keep out or oppose other operators coming to town.
- The Trusts have a 'monopoly'.
- The Trusts are not transparent or inclusive.
- We can't buy alcohol in the supermarkets.
- The Trusts are more expensive.



Ethical



Sustainable



Accountable & Transparent



Community



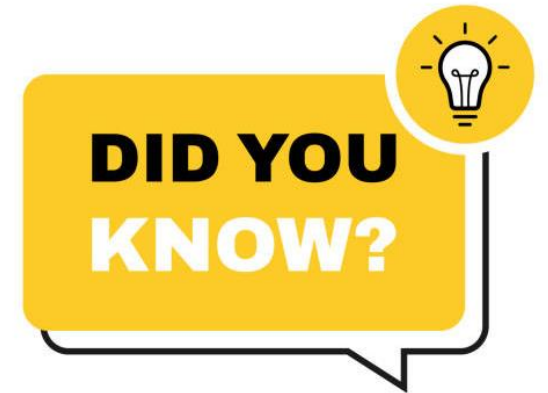
Successful

the trusts  
Keeping it local



# Facts

- The Trusts are undersupplying the market, losing \$94 million in retail liquor sales
- There are over 100 hospitality venues in West Auckland
- The Trusts have 5 venues with gaming out of a total of 31 in the region
- The Trusts have over 370 employees and pay the Living Wage - 20% live in WRLB area
- The Trusts intend to spend over \$40 million dollars in growing and improving their business
- We apply for licences through the council like everyone else
- We prefer to use local suppliers wherever possible
- The Trusts are committed to collaborating with the community



Ethical



Sustainable



Accountable & Transparent



Community



Successful

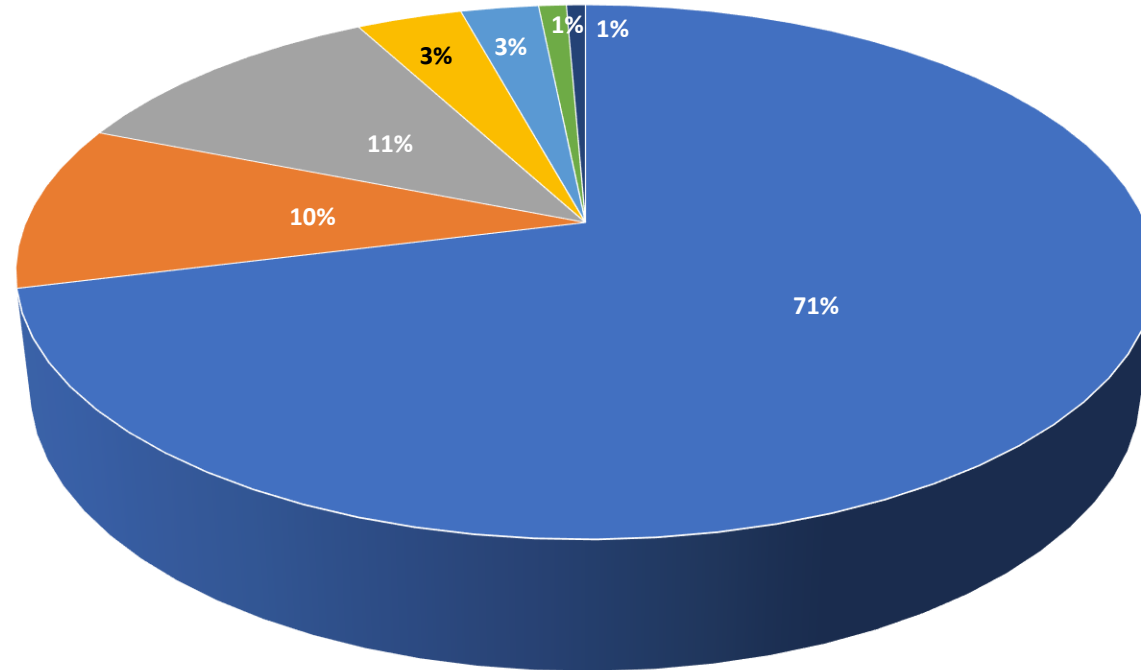
the trusts  
Keeping it local





# Where our \$\$\$\$\$ go!!

Sales of \$116m



- COGS
- Labour
- Operating Expenses
- EBITDA
- Depreciation
- EBIT
- Community Support



Ethical



Sustainable



Accountable & Transparent



Community



Successful

the trusts  
Keeping it local





# New Retail Brands

Bringing Choice To The West



**LiquorLand**  
*all the help you need*



**Super** **Liquor**



**the trusts**  
Keeping it local





Engaging with  
our communities



the trusts  
Keeping it local



# Community Support – since Jan 2019

|                        |                    |
|------------------------|--------------------|
| Your West Support Fund | \$2,000,000        |
| Household Distribution | \$600,000          |
| Million Dollar Mission | \$2,000,000        |
| Sponsorship            | \$900,000          |
| Major Grants           | <u>\$2,000,000</u> |
| <b>TOTAL</b>           | <b>\$7,500,000</b> |



Ethical



Sustainable



Accountable & Transparent



Community







Successful

the trusts  
Keeping it local





# The Way Forward

- Improve our hospitality venues  *Underway*
- Better choice of retail brands for our community  *Underway*
- Reinvestment back into our property portfolio  *Underway*
- Increase the support back into our community  *Underway*



Ethical



Sustainable



Accountable & Transparent



Community



Successful

the trusts  
Keeping it local





Questions?

How do we continue  
the conversation?



**the trusts**  
Keeping it local

# Connected Communities

## Work Programme Update

### for Waitākere Ranges Local Board

2 November 2023

# Purpose:

- To provide a monthly update to elected members on progress and delivery against the following Connected Communities line-items:
  - Place and Partners
  - Arts
  - Libraries
  - Youth Development
  - Placemaking
  - Community Resilience
  - Māori Responsiveness
  - Thriving Communities
- To received feedback and direction from members



# Work Programme – Place and Partner specialist (Community)

- Activation of community led venue partners Waitakere Ranges
- Access to community places Waitakere Ranges



# Activation of community led venue partners Waitakere Ranges

- The two Community led centres are now using the new reporting template for their quarterly updates.
- These quarter reports are now to be sent to Local Board members each quarter to provide more detail to the quarterly updates



# Thriving Communities in action

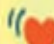
Bringing Ngā Hapori Mohomo to life




The strategy outlines six objectives and four outcomes which outline the goals to achieve. Showing how your mahi (work) is aligning with these objectives and outcomes through your stories is a powerful way of demonstrating how the strategy is improving how you work to deliver better outcomes for Aucklanders. Below is a reminder of each of these and what it means for your mahi.


## What we need to do thrive


 Increase whānau and community financial security

 Improve health outcomes

 Increase access and participation

 Enable local leadership and innovation

 Grow community and intercultural connection

 Increase local climate resilience and sustainability



## To achieve

### MANAAKITANGA

All Aucklanders enjoy the essentials of a good life and fulfil their potential

### WHANAUNGATANGA

Aucklanders are connected and feel as though they belong

### KOTAHITANGA

All Aucklanders can participate and take collective action to meet common goals

### KAITIAKITANGA

Aucklanders are connected to and care for the natural environment



# Bringing Ngā Hapori Momoho to life

| Activation:   |   | Matariki Out West – Introduction to Energy Medicine  |  |  |
|---|---|--|--|--|
| Situation<br>What was the context   | People<br>Who made it happen  | Challenge<br>What was needed   | Action<br>What steps were taken  | Impact<br>What difference it made  |
| <p><b>NGĀ HAPORI MOMOHO</b><br/><b>THRIVING COMMUNITIES</b></p> <p>Matariki Festival Out West Introduction to Energy Medicine workshop. This focused on introducing our community to the benefits of Reiki and Body Talk to optimise their physical, mental and emotional and spiritual health.</p> | <p>Collaborating with the Titirangi Library to ensure there was no duplication in Matariki activities. Christine Carter and Bev worked together to create several events at the library and at the community house.</p>                                       | <p>Finding a local Reiki specialist who would be able to deliver this session.</p> <p>This session was provided for free reducing the barriers to people in the community who might not be able to afford a koha or fee.</p> | <p>The workshop was promoted in the Matariki Festival Out West Booklet on social media through the community house and through library networks.</p> <p>As the session was held in the morning so was promoted through the local rest homes and retirement villages.</p> | <p>We brought attendees to come together and connect while learning new skills to support them with the mental health and wellbeing.</p> |
| How does it reflect the Ngā Hapori Momoho (TC) Objectives   |   | What are you hearing? What are you learning?   |  |  |
| <i>List the objectives your activation aligns with</i>  | <i>Provide details of how your activation aligns with the objective</i>   |  |  |  |
| Improve health outcome  | <ul style="list-style-type: none"> <li>✓ The workshop provided a service that supported people’s mental and physical needs. This workshop helped provide attendees with the skills to cope with daily life, cost of living and environment stress.</li> </ul> | What feedback did you receive?   | Those who attended thoroughly enjoyed the session. The presenter was excellent, and knowledgeable and the workshop gave participants the skills to deal with the stresses of life.   |  |
| Grow community connections  | <ul style="list-style-type: none"> <li>✓ The session brought together a wide range of ages and diversity.</li> <li>✓ Those attending enjoyed each others company.</li> </ul>  | Do you have plans to grow this activation?   | Following on from the workshop, there has been feedback that a regular meditation and reiki session would benefit those living in the community. We will look to introduce a weekly meditation session.  |  |
|   |   | What were your key learnings?  | Running during the day (morning) limited those who could attend. When introducing a regular session, we are likely to look at a time in the evenings or weekends to expand on numbers.   |  |
| Increase access and participation   | <ul style="list-style-type: none"> <li>✓ This workshop brought new attendees into the house.</li> <li>✓ This gave them an opportunity to see what else we offer and a number of people have joined other activities.</li> </ul>                               | Which long term Ngā Hapori Momoho outcome does this deliver towards  | Matariki is about bringing people together and celebrating new beginnings.   |  |

|  |   |  |
|--|---|--|
| <b>Facility:</b>   |   |  |
| <b>Quarter:</b>  |   | <b># Local connections:</b><br><i>Number the amount of people who you have been meeting with</i> |
| <b>10</b>  |   |  |
| Tell us who have you been <b>connecting</b> with and what <b>opportunities</b> have come from those meetings.  |   |  |
| <p>Te Uru – Meeting with education team – opportunities for holiday programme, promotion of activities, more awareness of what they are running so no duplication occurs with classes.</p> <p>Library – collaborating on upcoming projects, including Living Wisely in Waitakere Day (16/09/2023) and Christmas projects</p> <p>Security/ Homeless issues- met with representatives of playgroup, library, pottery, council staff and police – to discuss issues with security, alcohol and breaking into the Titirangi Memorial Hall</p> <p>Meet with Hospice West Auckland – to discuss future working relationship, hire and collaborations.</p> <p>Titirangi Primary School – Meet to discuss use of house for production &amp; potential room hire bookings for planning.</p> |   |  |
| <b>Feedback to Council (optional)</b><br>Share any challenges and opportunities that have occurred within the quarter  | <b>Highlights from the quarter (optional):</b><br>Tell us any other highlights that have occurred this quarter  |  |
|  | <p>Increasing activities for children. Running 3 classes after school;<br/> Arts – Watercolours<br/> Science Club<br/> Friday night writers – supporting children with creative writing</p> <p>Coordinating Term 4 activities – including the introduction of a life drawing class for adults &amp; and Connection Adult group starting 15/09/2023</p> <p>Provided the house for free to support the School Production held at the Memorial Hall. Children got dressed at the house and waited till they were required in the hall. 350 children, each night for 3 nights. Great to support the community and grow our relationships with the school.</p> |  |

# Access to community places Waitakere Ranges

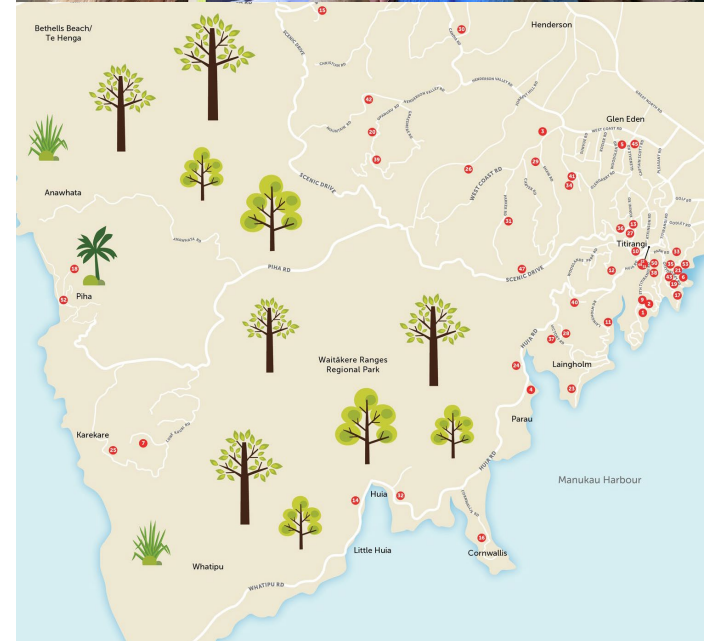
| Community led centers     | Participation numbers for Quarter 1, 2022/23 | Participation numbers for Quarter 1, 2023/24 | Booking Hours for Quarter 1, 2022/23 | Booking Hours for Quarter 1, 2023/24 |
|---------------------------|--|--|--------------------------------------|--------------------------------------|
| Glen Eden Community House | 11,517                                       | 12,692                                       | 1,576                                | 1,911                                |
| Titirangi Community House | 3,084  | 4,349  | 638                                  | 1,272                                |
| Totals for Quarter 1      | 14,601                                       | 17,041                                       | 2,214                                | 3,183                                |

In Q1, both Community Led centres booking hours and participation numbers have increased compared to the same period last year.



# Arts partners update

- Te Uru is hosting a second “Drawing with Susan” event this coming Saturday, in which anyone can come and draw alongside currently exhibiting artist Susan Te Kahurangi King.
- Upstairs Gallery is currently showing their “Emerging Artists Show” which includes the work of 35 new artists, this was launched by a very well attended opening / awards presentation.
- The Open Studios Waitākere event is on from 18-19 November, with 80 participating artists across 40 studios and galleries. An opening event will be held the evening of 15 November in Lopdell House.



# Waitākere Ranges Libraries

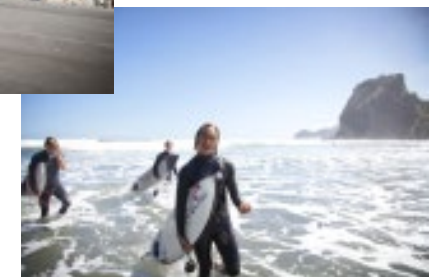
- Titirangi Library's annual Sustainability Day in September attracted over 400 people with 16 community organisations coming together to share ideas around conservation, reusable resources, sustainable living, and home composting.
- Matariki was celebrated in July with multi-sensory storytelling, a Matariki quiz event and craft sessions recognising the different stars in the Matariki cluster.
- During Te Wiki o te Reo Māori, educators from Auckland Museum presented oral storytelling and activity sessions to 76 junior pupils from Glen Eden Primary School, and Titirangi Library collaborated with seven schools and kindergartens to create artworks inspired by the taniwha.
- Titirangi Library took part in the Auckland Heritage Festival with screenings of historical movies from Titirangi Primary School and heritage games with Johnny Green.
- Code Club Aotearoa have started STEM workshops at Glen Eden Library for children aged 10+ who are learning about computer science concepts, such as game design and animation.



# Youth: Leadership / Voice / Economy

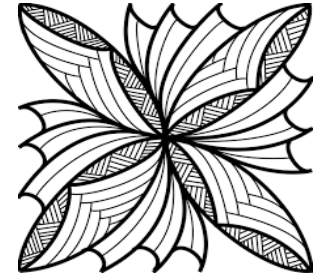
Sharepoint # 444, #445 and #1345

- Introducing **Kat Schuster**
  - Youth Specialist for NorthWest
- Tula'i Ngāue
  - Pasifika Youth Leadership
- Connected Media
  - Youth Capacity Building
- Te Kaiārahi
  - Youth Mentoring
- ZEAL
  - Youth Activations and Engagement
- TWI
  - Youth Economy





# Tula'i Ngāue



- Completed most of FY22/23 programme
  - ongoing work with community challenges
- 46 Pasifika youth graduating from intensive 10 week programme
  - community challenge :
    - building confidence, resilience, entrepreneurial and leadership skills.
- West Auckland Pasifika Forum (WAPF) presented to the local board in August
- final report will be provided in the coming weeks.

## Connected Media

- delivered workshops for Youth in the Waitakere Ranges local board area
  - supporting participants to make films on issues relevant to young people
  - to be shown at the national Outlook for Someday Film Challenge in November.
- Some of these films can be viewed at <https://someday.co.nz/films/i-stand-for-consent/>
- Connected Media will provide a report on local benefits before the end of the financial year.

# Te Kaiārahi

- funded to deliver outdoor activity and mentoring programmes
  - promoting youth wellbeing and resilience
  - grounded in Te Āo Māori principles
- have experienced storm related delays to their programme for rangatahi attending Hoani Waititi Marae and Kura
  - delivered in Piha and other coastal locations.
  - programme is still being completed
- working in collaboration with Managed Moves and Alternative Education centres around West Auckland
  - successfully engaging with and producing outstanding outcomes for young offenders involved in recent ram raids.
- reduction in offending and increased attendance in education
- report on programme available for members consideration
- Te Kaiārahi have been recommended to present this work to the local board



# ZEAL

Zeal West team have delivered six activations :

- Glenmall, Sunvue Park, Prospect Park and Parrs Park
- 12<sup>th</sup> and 13<sup>th</sup> July : 26<sup>th</sup> and 27<sup>th</sup> September : 3<sup>rd</sup> and 4<sup>th</sup> October
- from 12 noon to 5pm each day
- 3 youth workers in attendance

Six activation dates between December – January are in planning phase

- dates to be confirmed later in the school term

Glen Eden youth network - this work has not started yet

Meeting with ZEAL management 7 November 2023



# The Western Initiative - TWI

- Changes to staff – Dhaya Haran & Sarah Sinnott
- Glen Eden Playhouse Theatre:
  - providing work experience for eight rangatahi from WRLB area in January 2024.
  - Learning skills of lighting, sound, costume, props and stage management.
- Waitakere Wellbeing Kaupapa:
  - contractor delivering a series of wananga for tamāhine (young women) on hauora and wellbeing
  - mentoring two rangatahi to deliver community waiata and haka sessions for the general community in Waitakere Ranges area.
  - projects are in the planning stages to be delivered later this calendar year.



# Build Capacity / Placemaking:

Sharepoint #443, #446, #447 & #452

- Build Capacity
  - Community Resource Centre
- Capacity Building – Urban Neighbourhoods
  - Community Waitakere
- Neighbours Day
  - Administered by Community Waitakere
- Glen Eden Activation Programme
  - Glen Eden Safety Plan



# Community Resilience line:

Line item # 451 – Capacity Building : Community Resilience

- Community Resilience Planning
  - Community lead preparedness
- Kai Sovereignty
  - Food security and sustainability
- Housing & Homelessness
  - Reducing housing vulnerability
- Digital Skills & Resilience
  - Increasing digital literacy

# Community Resilience Planning (CRP)

Community Think engaged to connect with local communities -  
who has done community resilience planning?  
who hasn't but interested?  
where are communities at?

Number of communities connected with / interviewed -  
seven have done CRP or are beginning  
- two reviews and reprints  
- two began 10 plus years ago, one to be reviewed  
one still to sign off  
three wanting to start – support from HSNV  
three communities still to engage in programme

Community hui to establish local board wide network  
Report to Waitakere Ranges local board, pending





# Kai Sovereignty

- Emerged from the Collaborative Marketplace – 2017
- Collaborative network of community partners with a focus on enhancing food security and sovereignty in West Auckland
- Outcomes (thus far):
  - Te Puna Market / Kai Villages
  - Free Food Forum
  - Future of Food West Auckland
  - Waitakere Urban Farm Feasibility Study
  - Partnership brokering workshop
  - Kai West Charter document
  - Paid co-ordinator role



# Housing & Homelessness

- Funding support for the Housing Call to Action network
- Homelessness and Housing directory reviewed and updated
- Annual Homelessness and Housing hui held at Okaurirahi



# Digital Skills & Resilience



- Pop-up sessions held at Ranui, Titirangi and Glen Eden libraries
- Three workshops delivered at Glen Eden Library
- Two workshops at Ranui Library
- Workshop starting next week at Titirangi Community House
- Pop-up session at Piha Community Library 1<sup>st</sup> November
  - learners become confident in use of Chromebook device
  - able to access standard programmes and navigate online services
  - personal use for information research, document management, further studies and online classes



**Waitākere Ranges  
Local Board**  
Auckland Council



Ka taea e tātou katoa o Aotearoa ngā kaha matihiko ki te whai wāhi i te Ao  
Every person in Aotearoa has the digital capabilities to fully participate in the world

# Māori Responsiveness

Sharepoint #448 and #460



- Kaiwhakaawe – Māori Broker : Māori lead engagement
  - Support for hosting citizenship ceremonies at Hoani Waititi Marae
    - first event 31 October 2023
  - delivery of cultural comfort and whakawhanaungatanga sessions for elected members – dates for FY23/24 delivery tbc
  - hui with local board Chairs and Hoani Waititi Trust board – dates tbc
  - support local board Business Meetings at the Marae
    - Waitakere Rage local board - 28 September 2023
  - co-ordinate annual hui with mataawaka Māori - tbc
- Mana whenua engagement
  - regular operational hui with Te Kawerau Iwi Tiaki Trust
    - 31 July 2023 / 16 October 2023 – next hui early March 2024 tbc
  - funding for mana whenua involvement in community-led projects
    - Pest Free Waitakere / Cornwallis notice boards

# Implementation of Ngā Hapori Momoho (Thriving Communities) – Sharepoint #449

- Provision of strategic insight and leadership, connecting council, community and elected members
- Creating the conditions for change through brokering relationships, ideas and resources
- A strong focus on supporting Māori-led and community-led initiatives
- Responding to community requests for information, advice and support:
  - Titirangi Waka Ama Trust
  - Auckland Recovery Office
  - Cornwallis noticeboards
  - Grant funding information and assessments
- Member of the West Auckland Together Collective / Strategy Group
  - Council/local board representative at local networking groups

