

# Waitākere Ranges Local Board Workshop Record

---

Workshop record of the Waitākere Ranges Local Board held at the Waitākere Ranges Local Board office, 39 Glenmall Place, Glen Eden, Auckland on Thursday, 26 October 2023, commencing at 9.45am.

---

## PRESENT

**Chairperson:** Greg Presland  
**Members:** Michelle Clayton  
Mark Allen  
Linda Potauaine  
Liz Manley  
Sandra Coney

## Apologies:

**Also present:** Brett Lane, Natasha Yapp, Nataly Anchicoque, Sharlene Riley and Keri MacKinnon

Workshop Item	Summary of Discussions
Auckland Transport monthly update Owena Schuster, Elected Member Relationship Partner Helen Griffin, Transport Services Engagement Planner Britton Broun, Senior Government Relations Advisor Leo Vanderlaan, Programme Coordinator Antony Hing, Senior Transportation Engineer 9.45am – 11.10am	Auckland Transport staff updated the Board on the Rail Network Rebuild Stage 3 and the Konini School project.

The workshop concluded at 11.10am.



# Ngā Tiriti Ngangahau – The Vibrant Streets Konini School Safer Streets

26 October 2023



# Konini School - Safer Streets

## Background

The Ngā Tiriti Ngāngahau programme is a newly established \$3 million fund, to be delivered by Auckland Transport over the first three years of Auckland Council's 10-year climate action package. The programme aims to deliver trials and tactical urbanism interventions across the region, outside of the city centre, to reduce emissions and congestion through encouraging mode choice to walking, cycling and micromobility.

The Waitakere Ranges Local Board made a successful application to the fund to develop a project called Konini School Safer Streets. This project opportunity aims to potentially deliver tailored safety improvements including, speed calming measures, behaviour change initiatives and improved wayfinding or a combination of these.



# Co-exploring, co-designing & co-delivering

Connect

Explore

Design

Test & learn

Implement

Who needs to be involved in this project? And what role will they be taking on?

How can we get more tamariki riding, walking, scootering to school?

What kind of opportunities are there? How could we make the biggest impact?

Are these solutions making a difference? What might we need to change?

What change or impact are we seeing over time?

Building relationships with schools and surrounding community

What are the current concerns, behaviours and needs?

What is feasible for us to deliver together?

Measuring the effectiveness of the solutions

How long will these solutions be in place?

**Whanaungatanga**

**Kōrero with parents, tamariki, community members**

**Feedback from whānau & community**

# What we've done so far

We are here

## Connect

## Explore

## Design

## Test & learn

## Implement

Wheels Day  
50 tāmariki

At the gate sessions x 2  
20-30 adults, 60 tāmariki

Teacher & staff  
engagement

Establish project priority  
list

Implementation early 2024

Student workshop  
50 tāmariki

Local Board workshop

Design new carpark layout

Residents & Parents  
engagement

Propose new  
walking/cycling routes

Student engagement

Plan prioritised activations



# Infrastructure

Infrastructure Long List	Prioritisation of projects (1 - 6)		Total Score
	Konini School Prioritisation	AT Prioritisation	
Badminton parking - pick-up/drop-off zone at badminton hall	1	2	3
Brighten up/improve walking routes	5	1	6
New road crossings - Glengarry Road / bottom half of Kaurilands Rd / Kashmir Rd / Philip Ave and Shetland St intersection	3	4	7
A redesign of the front gate parking area. With a drop zone.	2	5	7
End of journey facilities – a mini-bike hub', train a teacher or parent to offer weekly basic repairs, bike storage	6	3	9
Existing bike trail - improvements to this and promotion of facility to students	4	6	10

- The top two infrastructure projects will be further investigated and checked for feasibility. If found feasible, these will be carried through to delivery.
- If for any reason either of the top two projects are found to be infeasible, we will move down to the next priority on the list

## Current top two projects are:

### Badminton carpark area

- Overall, make this space safer and more efficient for all users
- Attract more parents to use this as their primary pickup/drop off area

### Improve walking routes/Wayfinding

- Map out popular walking routes used by the students and improve any safety or operational deficiencies
- Encourage more students to walk to school and give confidence to parents that the routes are safe

# Activations

Activations	Prioritisation of projects (1 - 10)		Total Score
	Konini School Prioritisation	AT Prioritisation	
Wheel skills training - delivered via AT's Sustainable Mobility team = formal Bike Ready cycle skills training	1	1	2
Scooters training - delivered via AT's Community Partnership team	2	5	7
Enhancements to school entrances, encouraging people to use 'more entrances as entrances'	5	2	7
Bike train – similar to a walking school bus, but with students on bikes	4	4	8
Road safety training in class - 'Ready Steady Go' curriculum programme for Year 5 and 6 / Stepping Out with Juniors (delivered by NZ Police)	3	8	11
Walking School Bus (grandparent-led?) Info in enrolment pack to reach the school population	9	3	12
Travelwise spoken about/happening beyond Tuesdays – e.g. funky feet and spooky helmets	6	7	13
Incentivise park and walk / interactive activities	7	8	15
Incentives/prizes	10	6	16
More monitored crossings to increase safe crossing opportunities	8	8	16

- The top three activation projects will be further investigated and checked for feasibility. If found feasible, these will be carried through to delivery.
- If for any reason any of the top three projects are found to be infeasible, we will move down to the next priority on the list
- The current plan is to deliver these during the summer months for better engagement

## Current top three projects are:

### Wheel Skills Training

- Provide necessary cycle skills training to students so that they can confidently bike to school

### Scooter Training

- Provide necessary training to students so that they can confidently scooter to school

### Enhancements to other school entrances

- Encourage the use of other school entrances and ease congestion at the front gate

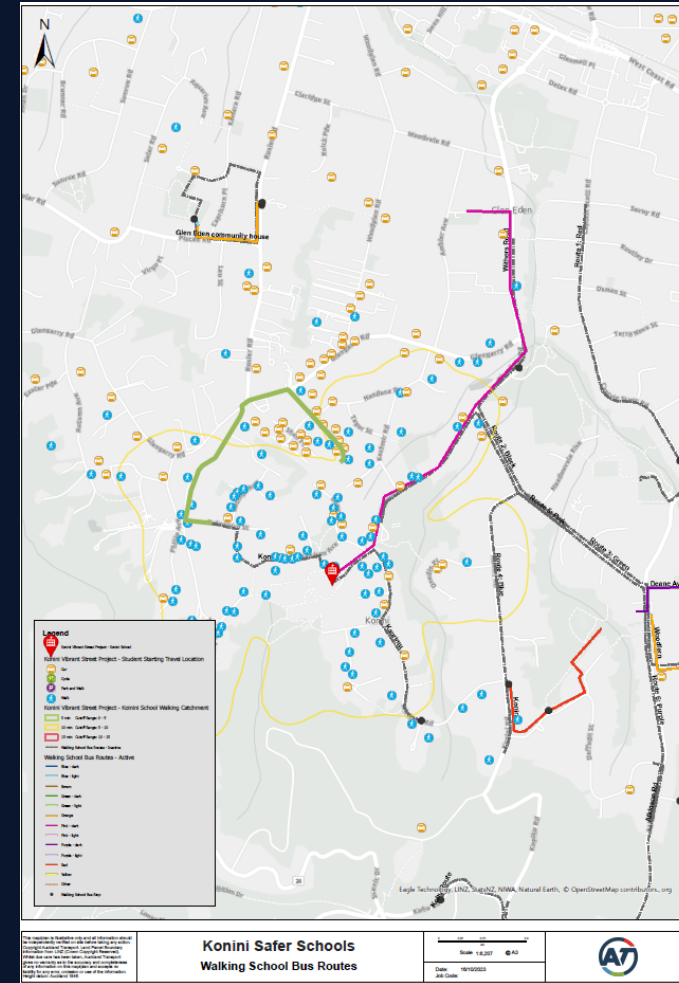
# Improve walking and cycling routes/Wayfinding

## Purpose:

- Map out popular walking and cycling routes that could be used by the students and improve any safety or operational deficiencies.
- Encourage more students to walk and ride to school and give confidence to parents that the routes are safe.
- Establish new walking school buses and/or bike trains.

## Timeline:

- Design: December 2023.
- Implementation: Early 2024.





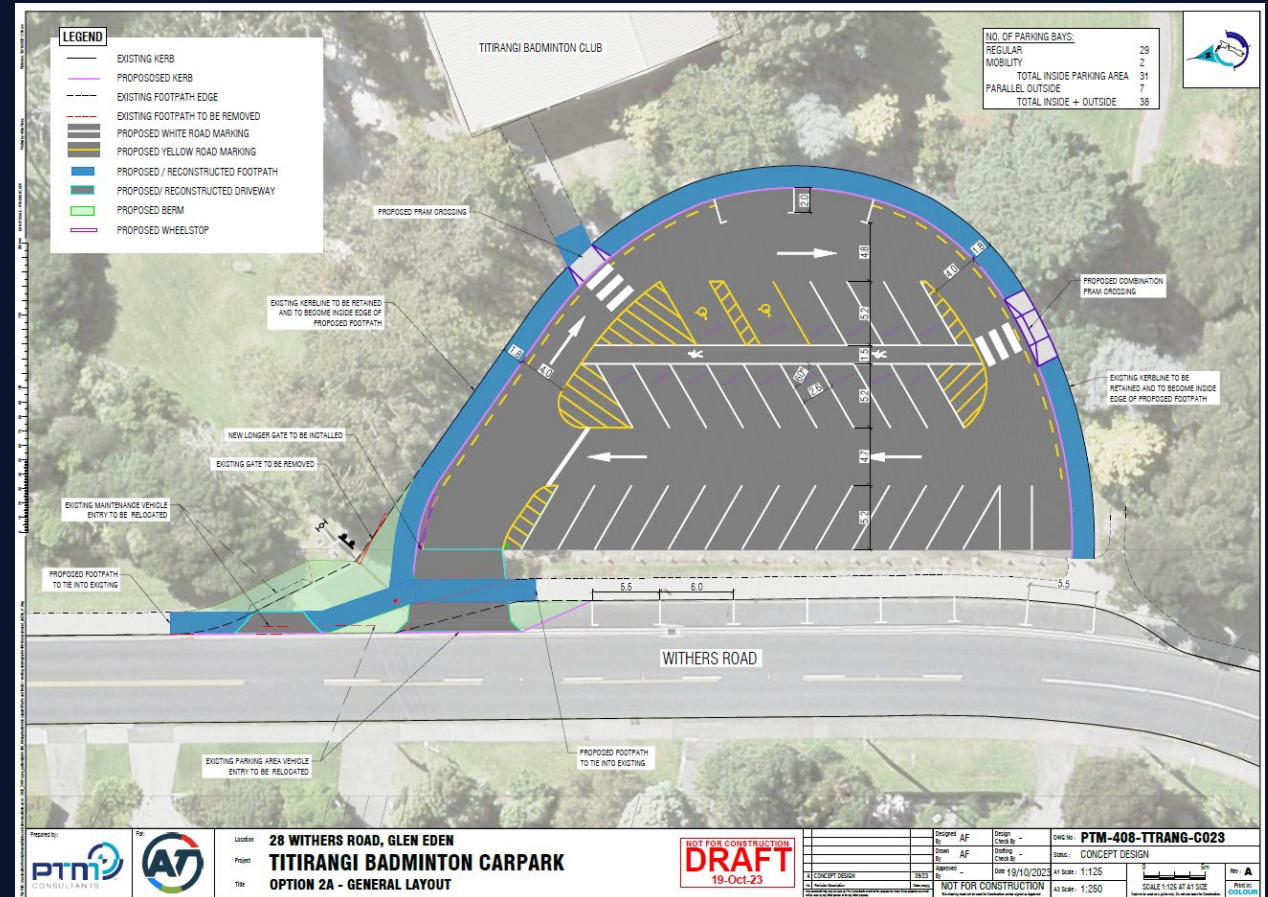
# Badminton carpark area

## Purpose:

- Reduce congestion and increase safety AT the front gate of the school. Reducing risky maneuvers by cars during pick up time.
- Overall, make this space safer and more efficient for all users.
- Attract more parents to use this as their primary pickup/drop off area away from the school gate.

## Timeline:

- Design: To be completed by January 2024.
- Construction: Planned completion before the start of term 1.



# Activations

- Grade One Cycle Skills student training - delivery in the week of 11-15th December.
- Teacher refresher cycle skills training –delivery in early Term One 2024, alongside any additional teacher mentor training sessions.
- Scooter student training – aiming for early 2024.
- Events and/or activations to promote new carpark and walking routes - aiming for early 2024.





An aerial photograph of a road with two cars, one white and one silver, driving in the same direction. The road has white lane markings and a yellow dashed line. A large yellow graphic element is in the top left corner.

**Questions, comments and feedback**

*Let's go there* 

# Thank you.

For more information please contact:

**Antony Hing**, AT Konini School - Safer Streets Project Manager

Antony.Hing@at.govt.nz

**Allyn Sims**, AT Programme Manager

allyn.sims@at.govt.nz | +64 9 448 7526

*Let's go there* 



# Rail Network Rebuild Stage 3

**Helen Griffin, AT**

**Britton Broun, KiwiRail**



26 October 2023



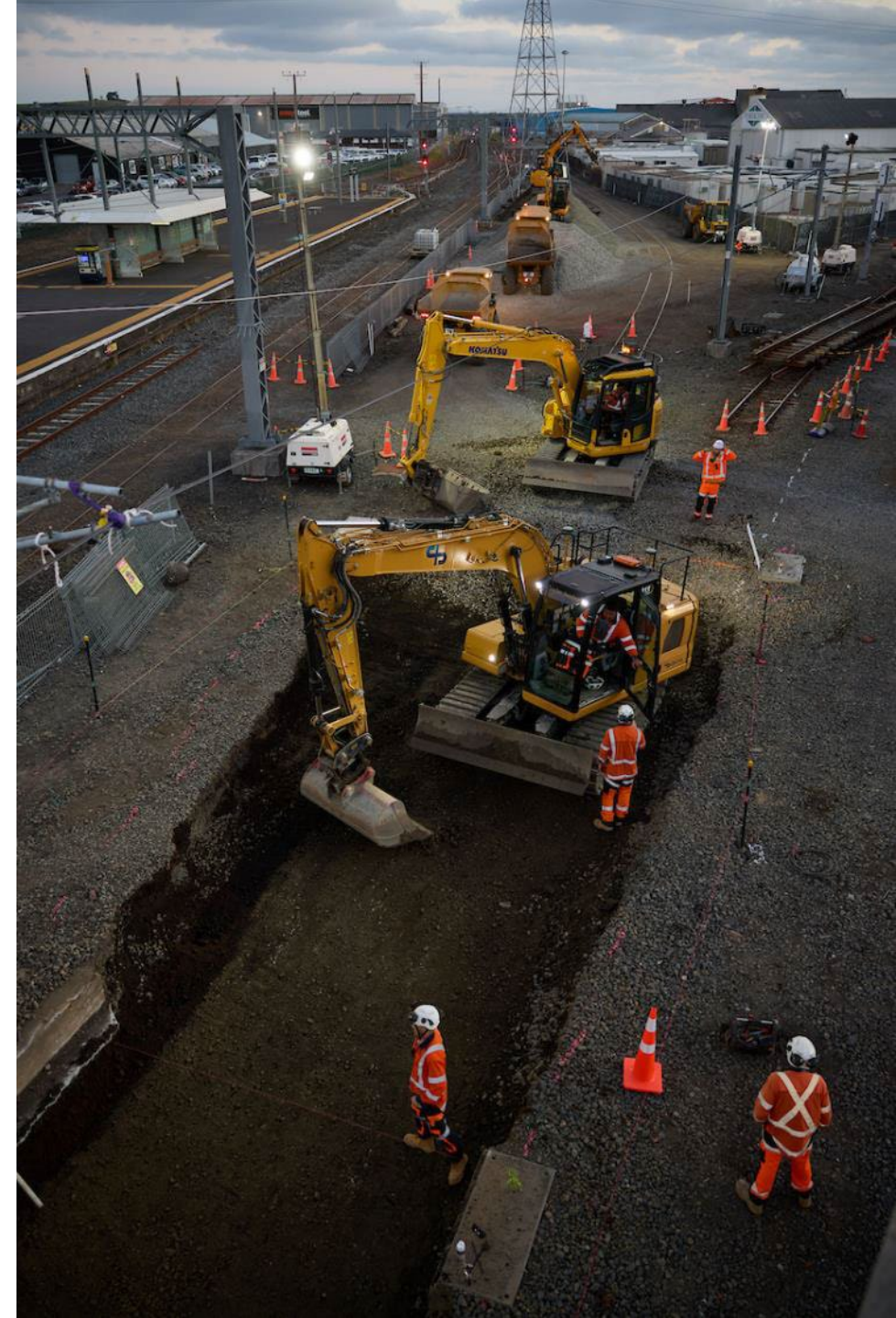
# What is the Rail Network Rebuild?

## A KiwiRail project

Replacing old foundations and fixing drainage issues:

- Leads to increased track issues
- Results in slower trains

To safely run more frequent services when CRL begins operating the standard of the wider Auckland network needs to be lifted



# Who is involved?

## KiwiRail

Own and maintain the Auckland rail network

Carry out the Rail Network Rebuild  
(and general track maintenance)



## AT and Auckland One Rail

Manage customer impact

Tell customers what's happening





# Different approach to Stage 3

## No lengthy train line closures

Work will be carried out:

- During holiday network-wide shutdowns
- On some weekends
- Overnight works
- Single Line Running on the Western Line for a period

Customer impact is minimised, compared with previous RNR stages.





# Different approach to Stage 3

## No lengthy train line closures

- CRL opening has been delayed = more time to complete RNR / allows less disruptive approach
- Taking advantage of normal down time – e.g., 3-week network-wide shut down over Christmas/New Year
- Difficult to provide alternative transport

**This approach adds complexity** – some details, and therefore some customer impacts, aren't confirmed yet



# **Rail Network Rebuild**

## **Stage 3a**

**Western Line**

**New Lynn – Newmarket**

**Labour Weekend 2023 – May 2024**





# Labour Weekend - December

## Preparation work and drainage improvements

Network-wide shutdown over Labour Weekend  
No AT trains

Night works – trains stop running from 9pm

- Sunday 5 November – Thursday 9 November
- Monday 13 November – Thursday 16 November
- Monday 20 November – Thursday 23 November
- Monday 27 November – Thursday 30 November
- One more week, TBC.

Weekend of work – 11 & 12 November.  
No Western Line trains

Working to ensure trains will run for special events on the Auckland calendar

Rail replacement buses when trains aren't running

New bus services for West Auckland from 12 November – 11T, 11W and WX1



# **26 December 2023 – 14 January 2024**

## **Replacing track foundation between New Lynn and Newmarket**

Network-wide shutdown

No AT trains

Rail Replacement buses when  
trains aren't running

New bus services for West  
Auckland from 12 November –  
11T, 11W and WX1

# 15 - 19 January

## Track and civil work between New Lynn and Morningside

No Western Line trains between Swanson and Britomart

Rail replacement buses when  
trains aren't running

New bus services for West  
Auckland from 12 November –  
11T, 11W and WX1

# Early March – May 2024

## Drainage and track work between Avondale and Kingsland

Nine weeks of daytime work

Trains will run on one set of tracks while KiwiRail work on the other

Trains will run in both directions all day

Frequency will be affected

Additional overnight and weekend work – dates TBC

Working to ensure trains will run for special events on the Auckland calendar

Looking to add a supporting bus service

Rail replacement buses when trains aren't running

New bus services for West Auckland from 12 November – 11T, 11W and WX1

# **Rail Network Rebuild**

## **Stage 3b**

**Southern Line**

**Papakura - Puhinui**

**Late January 2024 – early March**





# Late January 2024 – early March

## Drainage improvements

Improve resilience of this low-lying part of the network

Overnight and weekend work – dates TBC

Working to ensure trains will run for special events on the Auckland calendar

Rail replacement buses when trains aren't running

Frequent 33 bus may help some customers





# Letting people know



# Customer communications campaign

From December 2023

Social media

Posters at stations and on trains

Newspaper advertising

Brochure

On-going work with stakeholders

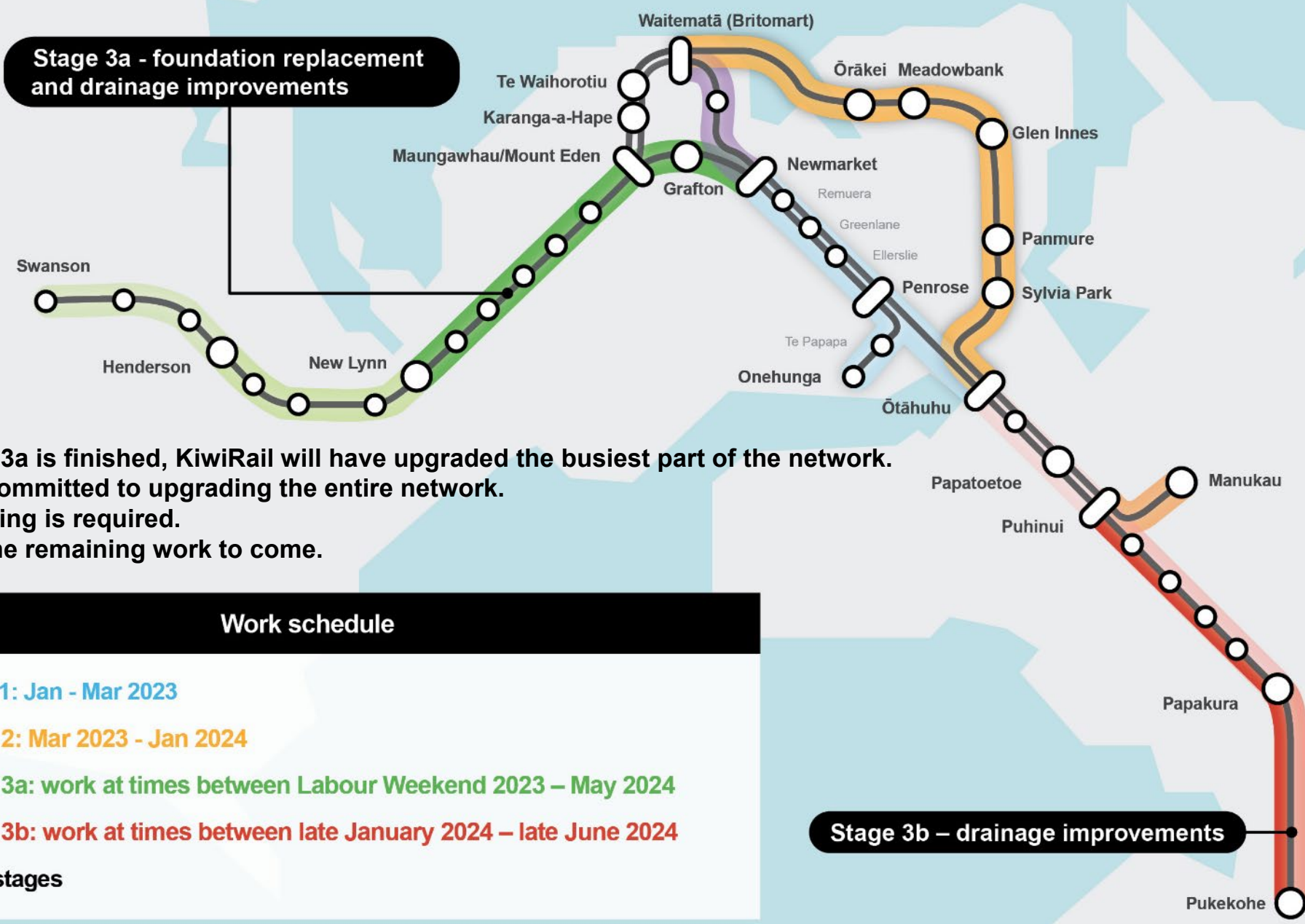
Timetables progressively updated

**Check travel options in advance!**

- Journey Planner
- AT Mobile
- Phone 09 366 6400
- AT Customer Service Centre



**Monthly  
stakeholder  
updates**



**Stage 3a - foundation replcement and drainage improvements**

**Stage 3b – drainage improvements**

- When Stage 3a is finished, KiwiRail will have upgraded the busiest part of the network.
- KiwiRail is committed to upgrading the entire network.
- Further funding is required.
- Update on the remaining work to come.

**Work schedule**

- ✓ Stage 1: Jan - Mar 2023
- Stage 2: Mar 2023 - Jan 2024
- Stage 3a: work at times between Labour Weekend 2023 – May 2024
- Stage 3b: work at times between late January 2024 – late June 2024
- Later stages