

Waitākere Ranges Local Board Workshop Record

Workshop record of the Waitākere Ranges Local Board held at the Waitākere Ranges Local Board office, 39 Glenmall Place, Glen Eden, Auckland on Thursday, 8 February 2024, commencing at 10.15am.

PRESENT

Chairperson: Greg Presland
Members: Michelle Clayton
Mark Allen
Linda Potauaine
Liz Manley (*until 12.20pm*)
Sandra Coney

Apologies:

Also present: Brett Lane, Natasha Yapp, Nataly Anchicoque and Rebecca Winham

Workshop Item	Summary of Discussions
Reorganisation/Representation review Warwick McNaughton, Principal Advisor Mary Binney, Lead Advisor - Increased Decision-Making Jacob van der Poel, Advisor Operations and Policy Liam Davis, Governance Services 10.15am – 11.40am	Staff led the discussion on the reorganisation option recommended to the Governing Body by the Joint Governance Working Party, as well as in the currently known issues relating to representation arrangements for local boards prior to formal feedback being sought on both items.
Pest Free Waitākere Ranges Alliance update Taylor Farrell, Relationship Advisor Michele Swanepoel, Coordinator Rowena Gilchrist, Senior Conservation Advisor 11.40am – 12.28pm	Board updated on the Pest Free Waitākere Ranges Alliance 2022/2023 outcomes as well as plans and objectives going forward.
Te Kete Rukuruku Tranche 3 Dawn Bardsley, Naming Lead Te Keet Rukuruku	Staff facilitated the discussion on the Te Kete Rukuruku Tranche 3 to draft a list of potential sites for naming as either sole Māori names or

Workshop Item	Summary of Discussions
12.28pm – 1.00pm	as dual Māori/English names.

The workshop concluded at 1.00pm.

Review of representation arrangements & Local board reorganisation plan

February 2024



What this is about

- Review of representation arrangements for the 2025 elections:
 - Number of councillors, wards
 - For each local board: number of members, subdivisions, local board name
 - Council is required to do this review
- Reorganisation plan for local boards:
 - Establishing or reorganising local boards
 - Representation arrangements for any changed local boards
 - Council is not required but has the opportunity to do this



Summary

	Representation review	Reorganisation application
Legislation	Local Electoral Act 2001, s 19H	Local Government Act 2002, sched 3A
Scope	<ul style="list-style-type: none">• Total number of councillors• Wards and boundaries• Number of members of local boards• Subdivisions and boundaries• Names of local boards	<ul style="list-style-type: none">• Number of local boards• Local board boundaries• Representation arrangements for each local board
Output	<ul style="list-style-type: none">• A proposal for 2025 elections which is publicly notified for submissions• Appeals determined by Local Government Commission	<ul style="list-style-type: none">• A local board reorganisation plan which is submitted to the Local Government Commission for approval
Frequency	At least once every six years	Ad hoc



Review of representation arrangements

Local boards



What can be reviewed for each local board

- Total number of members
- Whether members are elected at-large or by subdivision
- If by subdivision:
 - Subdivision names and number of members in each
- Local board name



Matters to consider

There are two key matters to consider:

- Effective representation of communities of interest
- Fair representation



Effective representation of communities of interest

- If members are currently elected at-large, is there a case for creating subdivisions to ensure all communities of interest are represented?
- If there are currently subdivisions – do they still provide for effective representation of communities of interest or are there different geographical communities of interest now?



What does community of interest mean?

Local Government Commission guidance – three dimensions:

1. Perceptual:

- a sense of belonging to an area or locality which can be clearly defined

2. Functional:

- the ability to meet with reasonable economy the community's requirements for comprehensive physical and human services

3. Political:

- the ability of the elected body to represent the interests and reconcile the conflicts of all its members



Fair representation (if there are subdivisions)

The + / - 10% rule:

The ratio of population per member within a subdivision must not vary by more than 10 percent from the average across the whole local board.



The council can decide to not comply if complying would compromise effective representation of communities of interest but the Local Government Commission makes the final determination.

The rule applies to subdivisions within a local board. There is no rule requiring all local boards to have the same representation ratios.



Boards with subdivisions – current non-compliance with 10% rule

	Pop	Mbrs	Pop per mbr	Diff from quota	% diff
Rodney Local Board Area					
Wellsford Subdivision	6,960	1	6,960	-2,036	-22.63
Warkworth Subdivision	23,600	3	7,867	-1,129	-12.55
Kumeū Subdivision	40,900	4	10,225	1,229	13.67
Dairy Flat Subdivision	9,500	1	9,500	504	5.61
Total	80,960	9	8,996		
Hibiscus and Bays Local Board Area					
Hibiscus Coast Subdivision	64,800	4	16,200	1,563	10.67
East Coast Bays Subdivision	52,300	4	13,075	-1,563	-10.67
Total	117,100	8	14,638		
Albert-Eden Local Board Area					
Ōwairaka Subdivision	50,200	4	12,550	125	1.01
Maungawhau Subdivision	49,200	4	12,300	-125	-1.01
Total	99,400	8	12,425		

	Pop	Mbrs	Pop per mbr	Diff from quota	% diff
Maungakiekie-Tamaki Local Board Area					
Maungakiekie Subdivision	32,100	3	10,700	-1,314	-10.94
Tamaki Subdivision	52,000	4	13,000	986	8.20
Total	84,100	7	12,014		
Howick Local Board Area					
Pakuranga Subdivision	43,100	3	14,367	-3,144	-17.96
Howick Subdivision	44,000	3	14,667	-2,844	-16.24
Botany Subdivision	70,500	3	23,500	5,989	34.20
Total	157,600	9	17,511		
Otara-Papatoetoe Local Board Area					
Papatoetoe Subdivision	60,700	4	15,175	1,361	9.85
Ōtara Subdivision	36,000	3	12,000	-1,814	-13.13
Total	96,700	7	13,814		
Franklin Local Board Area					
Waiuku Subdivision	16,350	2	8,175	-1,308	-13.80
Pukekohe Subdivision	41,800	4	10,450	967	10.19
Wairoa Subdivision	27,200	3	9,067	-417	-4.39
Total	85,350	9	9,483		



Summary of known issues

Local board	Issue	Status	Source
Devonport-Takapuna	Looking at a name change		Advised by Local Area Manager
Devonport-Takapuna	Saunders reserve is split between Devonport-Takapuna and Upper Harbour LB, requiring two different reserve management plans	Investigated. Problem is due to a large meshblock. Solution is to split the meshblock and to undertake a minor boundary change to the local board boundary.	Member George Wood.
Franklin	Looking at a name change		Advised by Senior Māori Outcomes and Engagement Advisor
Franklin	Subdivisions do not comply with 10 percent rule. Largest variance is Waiuku at -13.80%		Current statistics
Hibiscus and Bays	Subdivisions do not comply with 10 percent rule. Variance is 10.67%.		Current statistics.
Howick	Subdivisions do not comply with 10 percent rule. Largest variance is Botany at 34.20%	Staff to attend workshop with Howick Local Board on Thursday 1 February 2024	Current statistics.



Local board	Issue	Status	Source
Maungakiekie-Tāmaki	Maungakiekie subdivision does not comply with 10 percent rule being -10.94%		Current statistics.
Ōtara-Papatoetoe	Ōtara subdivision does not comply with 10 percent rule being -13.13%		Current statistics
Rodney	Rearrange subdivisions to provide better rural representation	NAG convened a workshop with board members 22 November 2023. The local board has not considered its position yet.	Proposal from the Rodney Northern Action Group (NAG)
Rodney	Subdivisions do not comply with 10 percent rule. Largest variance is Wellsford at -22.63%		Current statistics.
Rodney	Subdivision arrangement	A board member has submitted a suggestion	
Upper-Harbour	Create subdivisions	Investigated possible subdivisions for compliance and seems ok. Not yet discussed with local board.	Suggestion from then Councillor Linda Cooper in 2019

Governing body representation arrangements

Proposal is being developed on basis of 20 councillors to ensure rural areas continue to have distinct representation



Wards not likely to be much different to current arrangements since they must comply with the +/- 10% rule



Local board reorganisation plan

Number of local boards



Why consider a local board reorganisation?

- Current arrangements are not dysfunctional but there is the opportunity to consider improvements
- Fewer and more empowered (Mayor Brown)
- Fewer but their voice counts for more (Hon Rodney Hide)
- There are currently:
 - 21 local board plans
 - 21 local board venues
 - 21 local boards for the staff organisation to support
 - 21 local boards for media to deal with
 - 21 local boards for CCOs to liaise with



Background context

- In 2009 the Royal Commission on Auckland Governance recommended:
 - a unitary authority
 - 6 “local councils” (4 urban and 2 rural)
 - a community board for the CBD
- It had also considered a model of 11 local councils.
- The government decided there should be between 20 and 30 local boards
- The Local Government Commission determined 21 local boards



Mayor's preference

The Mayor has recommended an option based on the Royal Commission's model of 11 local councils but with each of the islands retaining a separate local board, making a total of:

- 13 local boards



Joint Governance Working Party (JGWP)

- The JGWP has examined some models for change:
 - Amalgamate two local boards where there are two local boards in one ward, giving 15 local boards
 - Mayor's preference for 13 local boards
 - Models based on current clustering of boards
- The JGWP recommended to the Governing Body to develop the 15 local board model further in comparison to the status quo
- The Governing Body has confirmed this approach by resolution



Local government size – large territorial authorities and community level

TA	Pop	Members	Com Bds	
Christchurch City	389,400	16	6	
Wellington City	213,090	15	2	
Hamilton City	179,900	14	NA	No community level
Tauranga City	158,300	10	NA	No community level
Dunedin City	130,410	14	6	
Lower Hutt City	112,450	12	NA	No community level
Whangarei District	100,500	13	NA	No community level
Hastings District	90,650	15	1	
Palmerston North City	90,390	15	NA	No community level
Waikato District	88,850	13	6	
New Plymouth District	87,790	14	5	
Note: Tauranga is prior to commissioners				

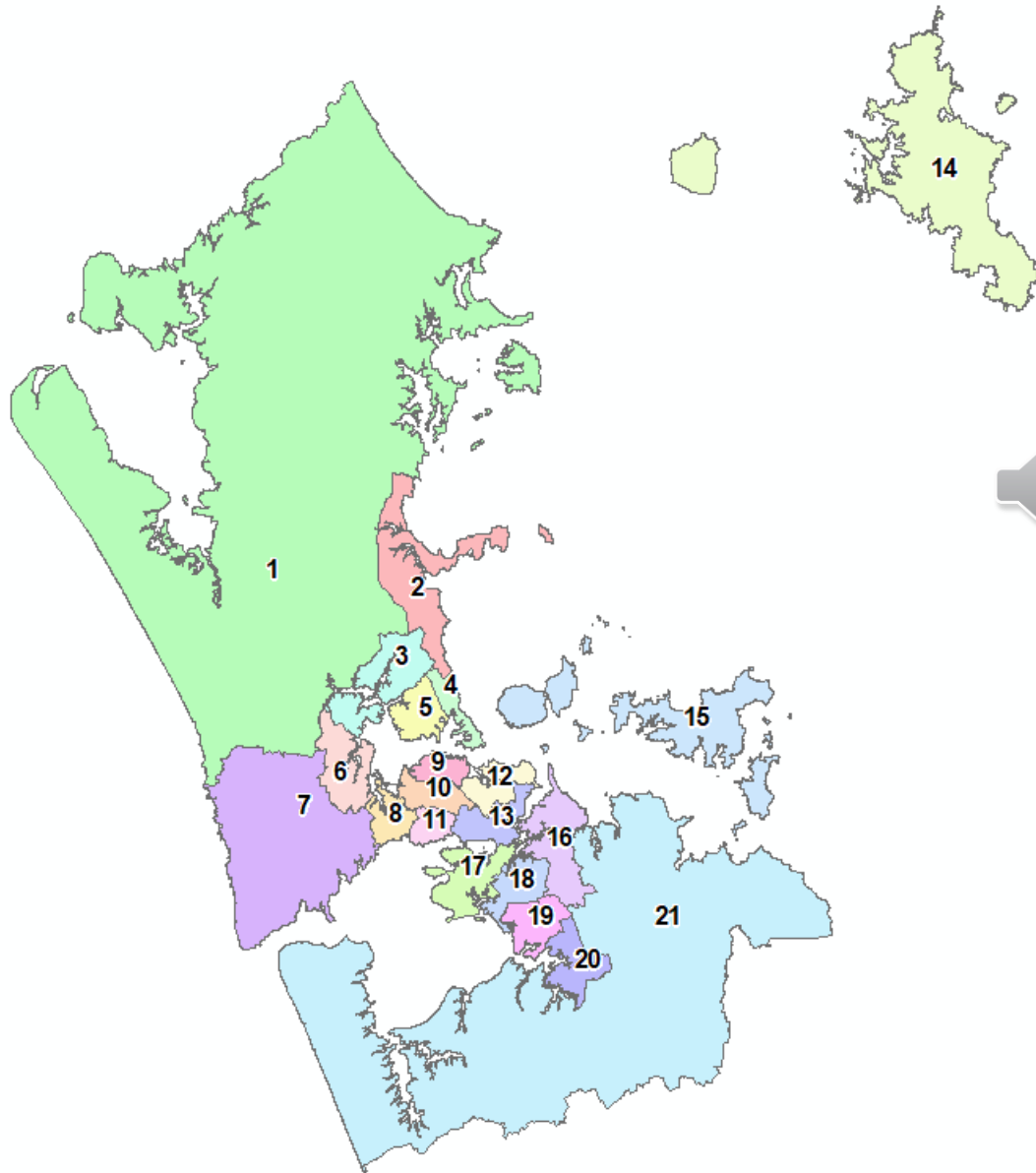
Hamilton is the largest TA without a community level

180,000 pop

Use Hamilton as benchmark for maximum population size??



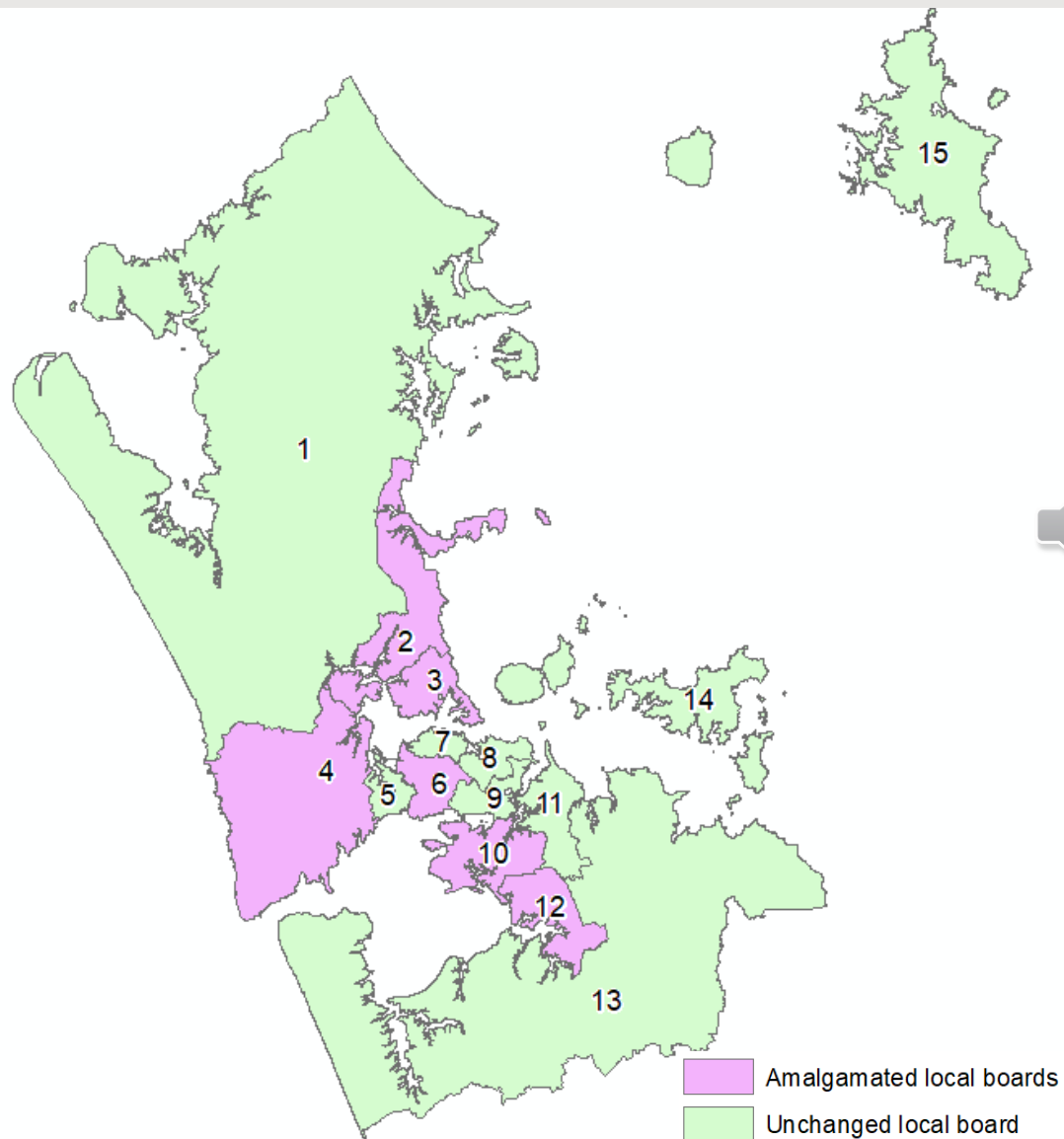
Status quo



Map ID	Local Board	Pop 2022
16	Howick	152,500
6	Henderson-Massey	128,500
2	Hibiscus and Bays	113,400
19	Manurewa	107,700
10	Albert-Eden	98,000
18	Ōtara-Papatoetoe	93,900
5	Kaipātiki	89,500
17	Māngere-Ōtāhuhu	86,300
12	Ōrākei	85,600
8	Whau	84,000
21	Franklin	83,600
9	Waitematā	83,500
13	Maungakiekie-Tāmaki	81,900
1	Rodney	79,400
20	Papakura	72,900
3	Upper Harbour	71,000
11	Puketāpapa	59,700
4	Devonport-Takapuna	58,100
7	Waitākere Ranges	55,200
15	Waiheke	9,390
14	Aotea / Great Barrier	1,050



15 local boards



Map ID	Contributing Local Boards	Pop 2022	Notes
2	Hibiscus & Bays + Upper Harbour	184,400	
4	Henderson-Massey + Waitākere Ranges	183,700	
12	Manurewa + Papakura	180,600	
10	Ōtara-Papatoetoe + Māngere-Ōtāhuhu	180,200	
6	Albert-Eden + Puketāpapa	157,700	
11	Howick	152,500	No change
3	Kaipātiki + Devonport-Takapuna	147,600	
8	Ōrākei	85,600	No change
5	Whau	84,000	No change
13	Franklin	83,600	No change
7	Waitematā	83,500	No change
9	Maungakiekie-Tāmaki	81,900	No change
1	Rodney	79,400	No change
14	Waiheke	9,390	No change
15	Aotea/Great Barrier	1,050	No change

Affected: 12

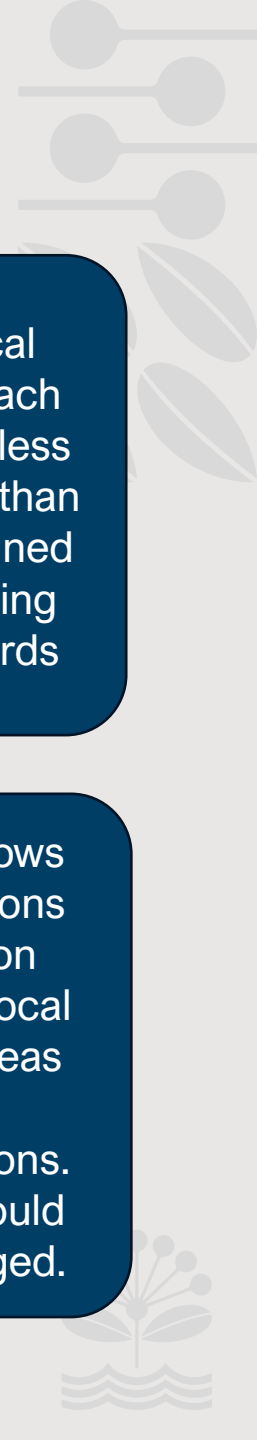
Unaffected: 9

15 local boards - representation of affected local boards - showing legal maximum of 12 members

Current boards	Subdivisions	Members		New boards	Subdivisions	Members
Hibiscus & Bays	East Coast Bays 4	8	➔	Albany	East Coast Bays	12
	Hibiscus Coast 4				Hibiscus Coast	
Upper Harbour		6			Upper Harbour	
Henderson-Massey		8	➔	Waitākere	Henderson-Massey	12
Waitākere Ranges		6			Waitākere Ranges	
Manurewa		8	➔	Manurewa-Papakura	Manurewa	12
Papakura		6			Papakura	
Māngere-Ōtāhuhu		7	➔	Manukau	Māngere-Ōtāhuhu	12
Ōtara-Papatoetoe	Ōtara 3	7			Ōtara	
	Papatoetoe 4				Papatoetoe	
Albert-Eden	Maungawhau 4	8	➔	Albert-Eden-Puketāpapa	Maungawhau	12
Puketāpapa	Owairaka 4				Owairaka	
			6			
Kaipātiki		8	➔	North Shore	Kaipātiki	12
Devonport -Takapuna		6			Devonport-Takapuna	

New local boards each have two less members than the combined contributing local boards

Table shows subdivisions based on existing local board areas and subdivisions. These could be changed.



Hypothetical membership – all boards

Local Boards	Pop 2022	Amalgamated?	Proposed Members	Current members
Hibiscus & Bays + Upper Harbour	184,400	Amalgamated	12	14
Henderson-Massey + Waitākere Ranges	183,700	Amalgamated	12	14
Manurewa + Papakura	180,600	Amalgamated	12	14
Ōtara-Papatoetoe + Māngere-Ōtāhuhu	180,200	Amalgamated	12	14
Albert-Eden +Puketāpapa	157,700	Amalgamated	12	14
Howick	152,500	No change	9	9
Kaipātiki + Devonport-Takapuna	147,600	Amalgamated	12	14
Ōrākei	85,600	No change	7	7
Whau	84,000	No change	7	7
Franklin	83,600	No change	9	9
Waitematā	83,500	No change	7	7
Maungakiekie-Tāmaki	81,900	No change	7	7
Rodney	79,400	No change	9	9
Waiheke	9,390	No change	5	5
Aotea/Great Barrier	1,050	No change	5	5
			137	149



Local board reorganisation plan

What are the legislative requirements?



When Local Government Commission considers our local board reorganisation plan

- Process is technically a “unitary authority-led reorganisation application”
- Commission must approve it unless:
 - The council does not provide the required documentation
 - The council has not complied with subparts 1 & 2 (next slide)
 - **The council has not considered the views and preferences of affected local boards**
 - **The plan does not have the support of affected communities.**
- Important to document the views and preferences of local boards and that the Governing Body has considered them
- Important to document community support

<https://legislation.govt.nz/act/public/2002/0084/latest/LMS906708.html>



What council must consider

- the **scale** and **likelihood** of achieving objectives:
 - enabling democratic decision making by, and on behalf of, communities
 - better enabling the purpose of local government
 - efficiencies and cost savings
 - boards have the necessary resources
 - effective responses to opportunities, needs, and circumstances of the area
 - alignment with communities of interest
 - enhanced effectiveness of decision making
 - enhanced ability of local government to meet the changing needs of communities for governance and services into the future
 - co-governance and co-management arrangements



- implementation costs
- consequences of not implementing
- communities of interest
- public support
- views and preferences of affected local boards

<https://legislation.govt.nz/act/public/2002/0084/latest/LMS906710.html>

<https://legislation.govt.nz/act/public/2002/0084/latest/LMS906695.html>



Objectives - comments

Democratic decision making by, and on behalf of, communities

- one of the purposes of local government
- can be broken into its elements:
 - “democratic decision making”: elected entity is accountable electorally
 - “by communities”: community participation (engagement) in decisions and in the democratic electoral process
 - “on behalf of communities”: representative democracy
- any change must enable **community engagement** and **effective decision-making**



Objectives - comments

Purpose of local government:

- includes promoting the four well-beings in the present and for the future

Efficiencies and cost savings:

- a value-for-money exercise is being carried out
- intuitively 15 local boards is a more efficient arrangement for those who support all local boards

Boards have the necessary resources:

- will be possible to upscale the level of advice and support

Effective responses to opportunities, needs and circumstances:

- combined boards will have more resources than they currently have



Objectives - comments

Alignment with communities of interest

- all boards will align with wards on one-to-one basis (except islands)

Enhanced effectiveness of decision making

- empowered boards (separate presentation)
- fewer boundary issues for amalgamated boards

Enhanced ability to meet the changing needs of communities for governance and services into the future

- reorganisation plan to take account of future development

Co-governance and co-management arrangements

- reorganisation plan to take account of settlement arrangements



Next steps



Your comments are welcome – reorganisation plan

Note there are two options to compare –

- status quo (21 local boards)
- 15 local board model



Use the legislative requirements in previous section to assist you with thinking about this



Your comments are welcome – representation review

- This is based on the current arrangements (21 local boards)
- Is your board thinking of a name change?
- If your board currently has subdivisions, are they still adequate?
- If your board does not have subdivisions, should it have subdivisions in order to provide more effective representation of communities of interest?
- If subdivisions do not comply with the +/-10% rule, staff will make further contact to discuss options



Timeline

- March - formal reports to boards
- Joint Governance Working Party considers recommendations to Governing Body
- May – Governing Body:
 - resolves initial proposal for representation arrangements for 2025 (including 21 local boards)
 - agrees on draft local board reorganisation plan for consultation
- June – August - submissions and hearings
- September – Governing Body makes final decisions:
 - Proposal for representation arrangements
 - Local board reorganisation plan



Questions?



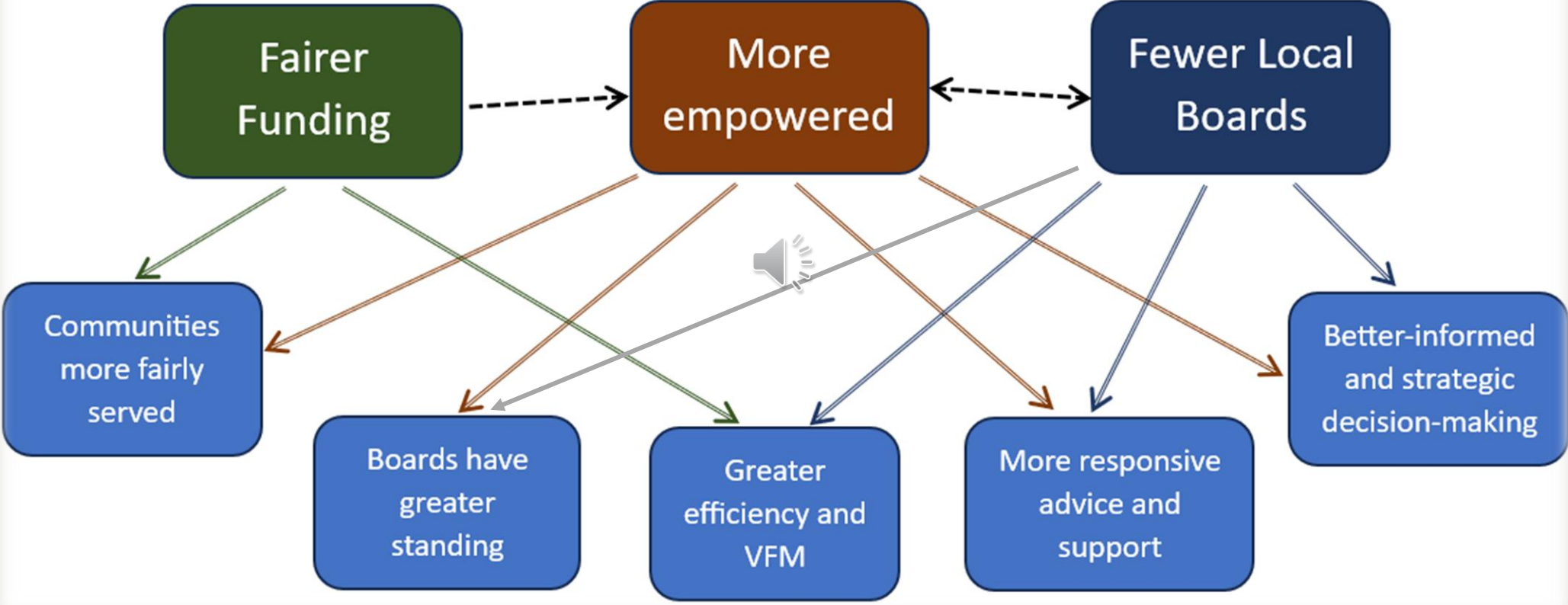
The Proposal for Fewer and More Empowered Local Boards

Seeking your ideas on proposals for change

Local Board workshops
February 2024



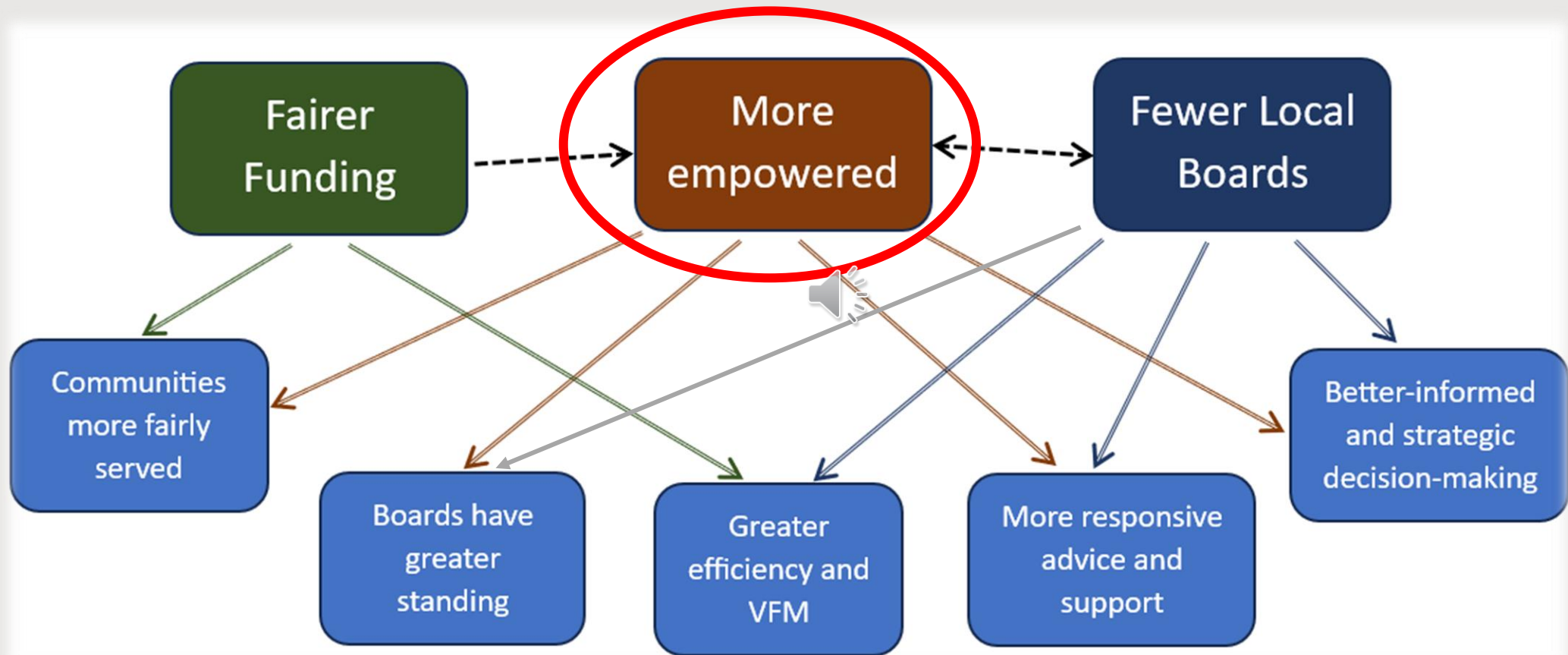
Integrating the Mayor's proposals for change



More Empowered Local Boards



What are the problems we are trying to solve? What opportunities could this create?



The change journey

2010 - 2015

- - Establish local boards and embed processes

2016 - 2022

GFR made recommendations on:



- - policy
- - funding & finance
- - governance & representation
- - organisational support
- - 2021 Increased Decision-making

2023 -

- -Mayoral proposals



The case for more empowered local boards

why have
more
empowered
boards

what would
more
empowered
boards do

the costs
& benefits
of change

what do
staff need
to do
differently



How well do current local boards represent communities of interest?

**Communities
of Interest**

- **LGC dimensions that need to be taken into account:**
 - Perceptual
 - Functional
 - Political
- **Linked to increasing LB influence**
- **Current communities of interest**
 - Aotea GB, Waiheke, Rodney, Franklin
 - urban boards?



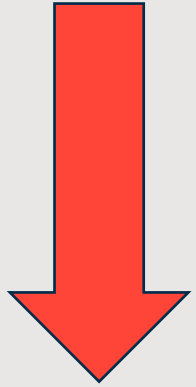
What is the problem?

**Why
fewer/more
empowered?**

- **X 21 makes delivery challenging**
- **Few people engage with their local board**
- **Member satisfaction is low**
- **Local board influence is limited**
- **Systems & processes are complex**
- **Quality advice resources are limited**
- **Focus is too operational**

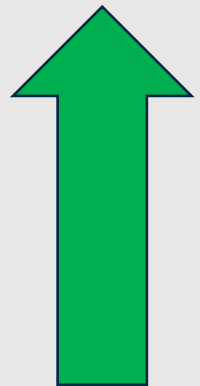


What do recent survey results show?



**Quality of life
surveys
2012-2022**

- **11% overall decline in feeling the public has influence over Auckland Council decisions**




**Residents
surveys
2016-2023**

- **Re Have your Say:**
 - “easy to” from **28% to 33%**
 - “opportunities to” from **28% to 42%**
 - “had their say” from **17% to 20%**



How are boards feeling?

**Mayoral
office survey
2023**

- **More support**
- **Full-time role**
- **More decision-making**
-  **Too much analysis & consultation**
- **Community want them to do more**
- **More autonomy, control over \$**
- **Better quality advice**
- **Respect**



How do local boards feel about the support and advice they receive? (numbers in brackets are 2021 response)

Elected member survey 2023

- Number of respondents – **75%** (91%)
- Overall satisfaction with advice & support – **74%** (87%)
- Satisfaction with delivery & timeliness of advice and support:
 - verbal & written – **72%** (82%)
 - responsiveness to requests & queries – **65%** (73%)
 - timeliness of formal advice & information – **65%** (73%)
 - proactiveness of communications – **66%** (68%)
 - communications guidance – **76%** (64%)
 - policy, strategy & planning – **69%** (75%)
 - financial information – **60%** (77%)
 - legal guidance – **63%** (56%)

Decreases in satisfaction are show in red
Increases are show in green



What might more empowered local boards look like?

**Sufficient
strategic
advice**

**Sufficient
resourcing &
accountability**



**Maximum
powers under
LGACA**

**LGACA
Subsidiarity
test met**



More empowered local boards will have:

**Sufficient
strategic
advice**

to

- **operate in ways that meet their communities' needs**
- **develop local policy approaches**
- **support their influence at the GB level**
- **engage effectively with their people**
- **support simple & flexible systems and processes**
- **receive advice not just information**



More empowered local boards might have:

sufficient
funding,
resources &
accountability

to

- have funded minimum standards
- raise funds for services above these minimums
- have other activities if they fund them
- have more delegations, incl working with AT on local transport delegations
- have the accountability that comes with empowerment



Supporting more empowered local boards

Suggested approach

- **simpler approaches & less duplication**
- **find ways to be more responsive and flexible**
- **develop different processes fit for different communities**
- **lift local board activity to a more governance level**
- **review advice so its led organisation-wide**
- **review plans & policies to fit with local board needs**
- **review the local board support model**
- **improve governance & quality advice skills**



What's next?

- **Staff are presenting to all 21 local boards during February**
- **Feedback at workshop or throughout Feb to representationproject@aucklandcouncil.govt.nz or via your LB team**
- **Other targeted engagement also underway**
- **Read the 2 Feb JGWP agenda item on the case for more empowered local boards and engage with your rep on the JGWP**
- **Reports on your March business meeting agendas**
- **Feedback will be reported back to the JGWP and GB**
- **A detailed discussion paper on a more empowered approach is being prepared and will be presented to the JGWP in March or April**
- **A value for money assessment is also underway**



Pest Free Waitākere Ranges Alliance Feedback for 2023 Outlook for 2024





PFWRA Hui March 2023

Co-hosted with Oratia & Waatarua Native Wildlife Project -
Talks & Walk at Oratia Bowling Club

56 Attendees

[Climate Change, Flooding & Mitigation](#)

What is Climate Change - Frazer Dale, Auckland Council

Un-engineering the City - Dr Timothy Welch, University of Auckland

*Oratia & Waatarua Native Wildlife Project - Simon Oosterman
Beckers*





PFWRA Hui & AGM

June 2023

Talks & Photo Contest Via Zoom

60 Attendees

It's in the Soil

*Natural hazards, land instability & rainfall triggered landslides -
Dr Martin Brook*

Bioaccumulation of poisons in our environment - Jo Ritchie

*Myco Remediation - how fungi assist in breaking down
compounds in the environment - Bart Acres*





PFWRA Hui November 2023

Co-hosted with STNN at Titirangi Beach Hall

30 Attendees

Make Your Backyard Count

Predator suppression plan in South Titirangi - Kate Lowe & Bruce Inwood, STNN

Insects in your backyard - Dr David Seldon, Auckland University

Update on the local grey-faced petrel/ōi population - Michael Fox, Auckland University

What to do if you come across a fledgling in your backyard - Kim Frakes, BirdCare Aotearoa





PFWRA Hui for 2024

March

Sat 16th - What's your legacy - Co-hosted with Ark in the Park

July

AGM & Launch of Special Species Spotlight*, proposed venue Oratia Bowling Club

November

Proposed venue Henderson Valley

*Dependent on project funding

Info Sharing, Consultations, Surveys, Advocacy

- Regional Parks Management Plan (Mar 23)
- Auckland Council's Annual Budget (Mar 23)
- Possum Control in Waitākere Buffer (Jul 23)
- Rabbit Control in Piha (Oct 23)
- Sulphur Crested Cockatoo Survey (Nov 23)
- Shoreline Adaptation Plans (Sept 23-Feb 24)
- National Cat Act Petition (Dec 23)

Projects

- New Residents Welcome
- Special Species Spotlight
- Waitak Wasp WipeOut
- Spring is Sprung - A Trappers Recycling Project
- Working towards: Roadside Restoration
- Working towards: Predator Free 2050 Ltd



New Residents Welcome

1 July 2022 - 30 June 2023



Te Wao Nui a Tiriwa
LIVING IN THE WAITĀKERE RANGES
our whenua, our future

- Distribution
 - Target: 1,000 mailers to new homeowners.
 - Actual 538 mailers.
 - This is a reflection of a low number of house sales during this time.
- Activation (website visits/newsletter signup/resource collection).
 - Target 200 (20% activation)
 - Actual 337 (63% activation)
- Improvements to campaign
 - Increase mailout by including rental market.
 - Additional resources for collection from libraries.



Special Species Spotlight

Proposed start date:
July 2024 for 14 months

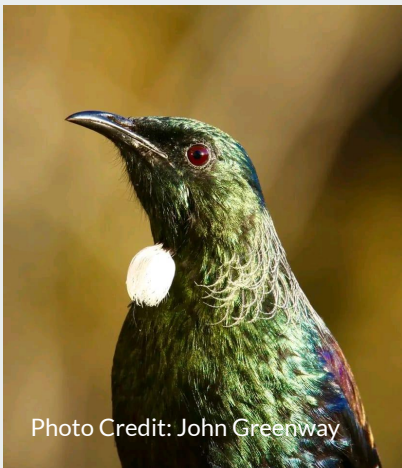


Photo Credit: John Greenway

Profile a different species and its associated village/township within the Waitākere Ranges Heritage Area each month for 14 months.

Goals:

1. Increase awareness of the biodiversity of the Waitākere Ranges
2. Increase environmental volunteer action
3. Build a community-wide base of support and social license as we prepare for a predator free 2050 project application



PFWRA Reach

Newsletter (for 1 July 2022-30 June 2023) - 4,583 people received our newsletter and 2,292 people had a look at it (average 50% open rate).

Facebook (for 9 July 2022 - 30 June 2023) - 23,821 facebook post views, and average of almost 2,000 view/month.

PFWRA Website (for 1 July 2022-30 June 2023)
- 1,400 new users

Living in the Ranges Website (for 1 July 2022-30 June 2023) - 638 new users

**TOTAL NUMBER OF PEOPLE REACHED
VIA ONLINE CHANNELS:**

28,151

Thank you for supporting our community of environmental warriors.





END OF CONTRACT REPORT for the Waitākere Ranges Local Board

By Michelle Swanepoel

For contract period 12 August 2022 - 30 June 2023

379.5 Hours rolled over and completed by 26 September 2023



Winning Fabulous Fungi photo: *Cantharellus Wellingtonensis* by Jasmin Alice

Introduction

The Alliance would like to thank the Waitākere Ranges Local Board for funding the role of the PFWRA Coordinator, and Auckland Council for their tremendous support throughout this contract period. The Alliance continues to develop, establish and progress foundational projects to underpin the work of the volunteer environmental groups in the Waitākere Ranges Heritage Area, also ensuring that our work builds towards our long term goal of a Predator Free Waitākere Ranges 2050 Ltd project.



PFWRA Groups

The Alliance has identified the following environmental groups in the Waitākere Ranges Heritage Area for the 2022/23 period:

1. Predator Free Swanson/Waitākere
2. Muriwai Environmental Action Group (MEACT crosses over into heritage area)
3. Matuku Link
4. Matuku Reserve
5. Forest Ridge Community Group
6. O'Neill's Petrel Project
7. Te Henga Tūturiwhatu
8. Ark in the Park
9. Friends of Anawhata
10. Pest Free Piha
11. Karekare Landcare
12. Friends of Whatipū
13. Huia Trappers Group
14. Waima to Laingholm
15. South Titirangi Neighbourhood Network
16. 20 Acre Wood
17. Birdsong Opanuku
18. Restoration Ruatuna
19. Friends of Pūrua
20. Cornwallis Petrelheads
21. EcoMatters (Projects within heritage area)
22. Pest Free Waiatarua
23. Ark in the Park Bufferzone
24. Kaitiaki Kitewaho
25. Oratia Wildlife Project
26. Waiatarua Transmission Tower Community Group
27. Birdcare Aotearoa
28. Friends of Arataki
29. Friends of Regional Parks
30. Waitākere Ranges Protection Society

All these groups are on the Waitākere Ranges Heritage Area map, with the exception of the Oratia & Waiatarua Native Wildlife Project and the Waiatarua Transmission Tower Community Group, and those working across the region without a specific area of stewardship.

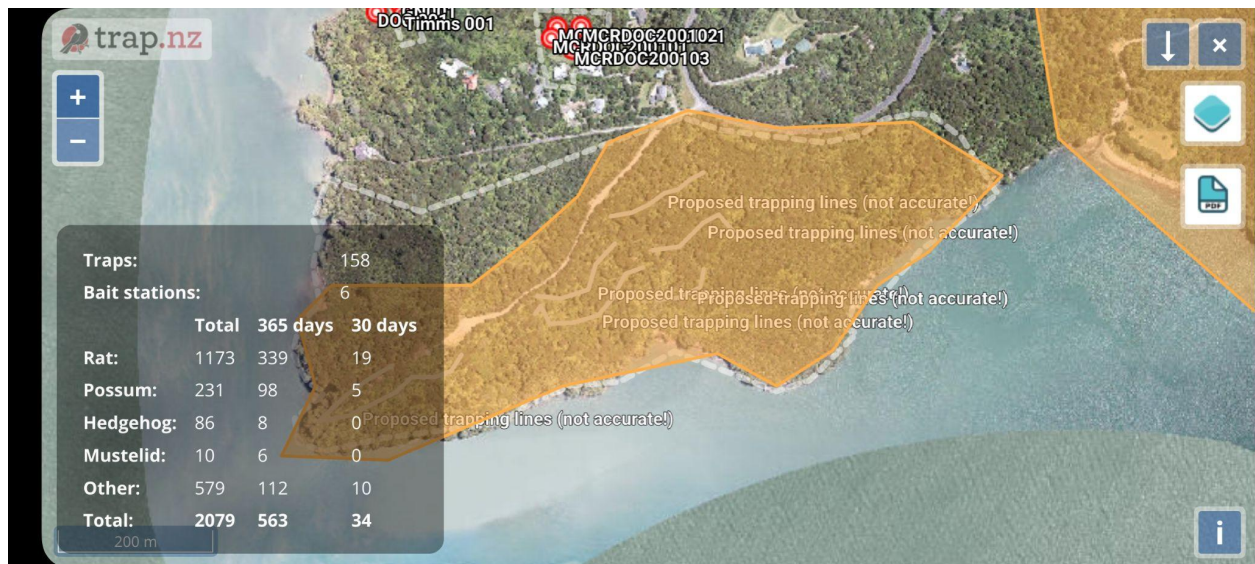
The Oratia Native Wildlife Project has recently been re-established, and is also covering parts of Waiatarua.

The Waiatarua Transmission Tower Community Group is on a hiatus. The Alliance has made a submission to Kordia on its behalf to seek funding for a coordinator to run a monthly weeding bee as a means to strengthen the group and bolster their numbers.

Friends of Woodside Glen updated their name to Friends of Pūrua.

The Forest Ridge Community Group has had a change in coordinator with the long term group leader moving out of the area.

The Huia Trapping Group and the Cornwallis Petrelheads are collaborating to extend trapping from Huia Point and beyond, and from Mill Bay including the Cornwallis Peninsula through to Kaitarahikihi. This will enable a contiguous trapping programme from Huia and beyond to 350+ ha.



During a recent survey undertaken to inform the Alliance’s strategic planning, the groups highlighted their key needs as being:

1. Resource provision, such as traps, bait stations and bait
2. Advocacy work with local authorities to ensure continued funding and support
3. Funding support for their own Coordinator/Facilitator
4. Assistance to connect with Te Kawerau ā Maki

PFWRA HUI

The PFWRA Alliance hosted 3 hui over the last 10 months. The summary of these events is as follows:

Hui	Date	Nr of Registrations	Nr of Attendees	Attendee event rating
Pestival Out West at Titirangi War Memorial Hall & Titirangi Community Hall Pestival Out West 2022 Evaluation Results	Sun 6 Nov 2022	179	160	8.6/10
Climate Change, Flooding & Mitigation at Oratia Bowling Club	Sun 5 Mar 2023	50	56	8.9/10
It's in the Soil via Zoom (Hui & AGM) Including Fabulous Fungi Photo Contest	Wed 14 Jun 2023	60	53	8.1/10

Hui Photos



Fabulous Fungi Photo Contest Entries



PFWRA Projects

New Residents Welcome (1 July 2022 - 30 June 2023)



Project Goals: *Education, Awareness, Resourcing, Connection, Activation*

<p>Education & Awareness via mailer and website</p>	<p>To provide those moving into the Waitākere Ranges Heritage Area with an understanding of the heritage area and an appreciation of the special taonga species in the area.</p> <p>To communicate what a great privilege it is to live in this unique environment, and that this also comes with the responsibility to look after it.</p>	<p>Target - Distribute 1,000 mailers</p> <p>Actual - Distributed 538 mailers</p> <p>The unusual weather and storms, floods and slips have resulted in lower numbers of house sales.</p>
<p>Activation, Resourcing & Connection via mailer and libraries</p>	<p>Activation mechanisms within the mailer include:</p> <ul style="list-style-type: none"> - Opportunity to win a prize (PekaPeka Birdfeeder) - Opportunity to collect resources from a local library or Arataki Visitor Centre. - Opportunity to connect with a local enviro volunteer group (via map). - Opportunity to connect to the website. 	<p>Target - Have 200 new residents visit the website, collect resources and/or sign up for the newsletter</p> <p>Actual - 337 new residents visited the website, collected resources and/or signed up for the newsletter. The breakdown is as follows:</p> <ul style="list-style-type: none"> - 269 (50% of those that received mailers) direct visitors (those using QR code/website address) visited the Living in the Ranges website. 637 visitors accessed the website in total. - 34 (6.32%) submissions were made via the form to enter the competition and/or collect resources. - 34 (6.32%) new residents signed up to the newsletter.

NRW Survey	A survey was sent to those that had made a submission to the competition or collected resources. I.e. those we have emails for.	<p>34 surveys were sent out. 1 person responded. This is too small a sample for analysis. Herewith some comments from this respondent:</p> <ul style="list-style-type: none"> - Did you find the information in the mailer helpful? <i>Excellent, just what I was looking for.</i> - Did the welcome mailer increase your understanding of living in this special environment? <i>Yes, a lot.</i> - Comments: <i>Just wanted to say that I'm really impressed with this mailer. It's inspired me to clear our back garden of weeds and plant some natives – something I'm really enjoying doing. I even got in touch with a local volunteer group for assistance. I think you're doing great work and hope you continue to get any funding you may require.</i>
------------	---	--

Learnings:

- The competition has been an excellent activation tool.
- The depressed housing market has impacted the reach of the campaign.
- New residents preferred to collect resources from the libraries rather than Arataki Visitor Centre.

Improvements:

- Increase reach - we are extending the campaign to include renters via real estate agencies, as an email campaign, hence the only added cost would be any extra resources collected via the Click and Collect list.
- Resource adjustment - we will be removing Arataki Visitor Centre as a resource collection venue and will relook at the resource collection list, considering what other items to add.
- Resource collections - we would like for this uptake to be greater, and will look at bolstering the resources currently available.

Budget:

Funding for 1 July 2022 - 30 June 2023 totalled \$12,475

TOTAL budget	\$12,475.00
Project Resourcing: Artwork, website, stock images, mailer hardcopy to softcopy conversion, pamphlet, domain name, website builder & hosting annual fee, web page development, envelopes, twine, cat collars, courier.	\$7,606.83
Coordinator hours	\$4,968.00
TOTAL budget remaining	-\$0.83

Looking Ahead:

- We will consider what avenues are available to make this project more self-sustaining.
- We will update the map in the mailer to include a Special Species icon for each village.
- We will update the website to include a Special Species of the Waitākere Ranges page, including an opportunity to raise funds.
- We aim to consider what other items residents might find useful, which can be added to the resource click and collect list.

Wasp WipeOut



There were 9 groups participating in a ranges-wide wasp control programme during wasp season. These groups were:

1. Waima to Laingholm
2. Pest Free Waiatarua
3. Forest Ridge Community Group
4. Predator Free Swanson/Waitākere
5. Pest Free Piha
6. 20 Acre Wood
7. Kaitiaki Kitewaho
8. Friends of Anawhata
9. Karekare Landcare

The wild weather Auckland experienced at the start of the year likely flooded ground based wasp nests. Groups across the board noted lower wasp numbers during their pre-baiting protein test. For the most part, baiting did not go ahead, and groups held onto their supplies for the upcoming 2023/24 wasp season.

Volunteer of the Month

The Alliance Co-Chairs and Coordinator agreed to set this project aside for the time being. We are just about out of prizes, and while those being selected as Volunteer of the Month were thrilled to receive this recognition, there was not a sufficient number of nominations being submitted by the groups overall.

The nomination form had been established to replicate the Love Your Place Awards form, so that these nominations could be resubmitted for this regional awards series, however, in discussion we recognised the VOM form should be simplified.

This programme has many merits. It is possible that it will resurface in a revised format.

PFWRA Newsletter Summary

For the period 1 July 2022 - 30 June 2023, the PFWRA newsletter went out to 4,583 people and had an average open rate of 50%.

We recognise that the newsletter needs a good “homegrown” feature story each month, to showcase the wonderful work of the volunteers. This is a capacity issue currently.

We hope to be able to address this when the Special Species Spotlight gets underway, which will give us an opportunity to include a written piece on the special species. Te Kawerau ā Maki will also be writing a piece on the village and its heritage, as well, we will have an opportunity to showcase the work of the local group.

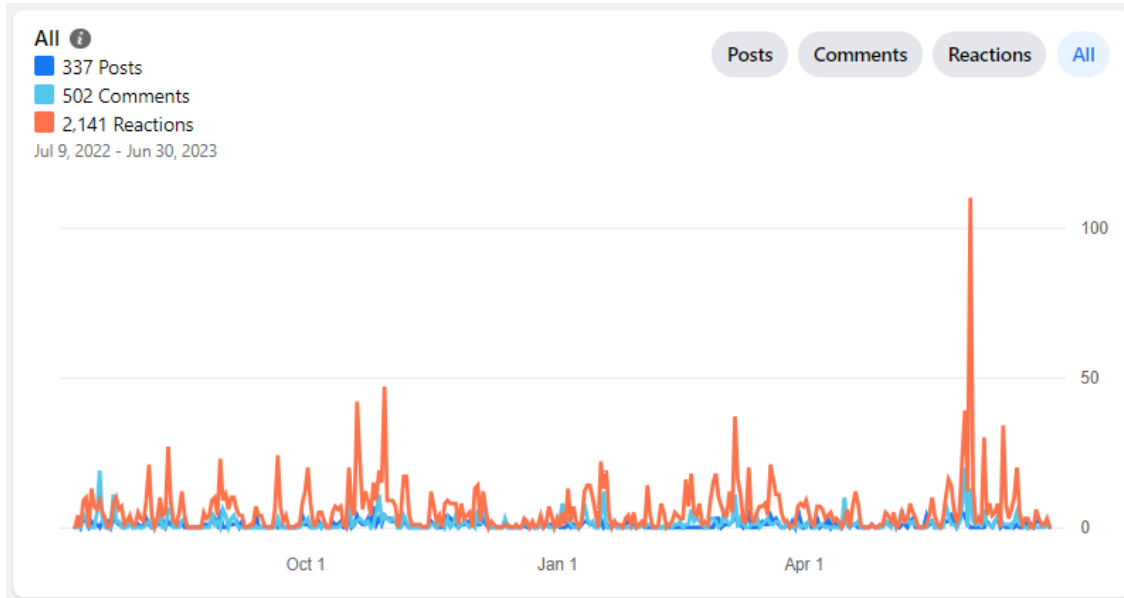
PFWRA Facebook Summary

The facebook page continues to be a key disseminator of information for the Alliance. During this past financial year we highlighted Auckland Council consultations on a variety of topics including the State of the Waitākere Ranges Heritage Area Report 2023 and Auckland Council’s budget.

We looked at new biosecurity hazards, such as the fall army worm, brown marmorated stinkbug and the gold clam. We spoke about kauri dieback, myrtle rust, responsible pet ownership and feral cats. We celebrated awards, and highlighted the successes of the groups and supported their mahi by sharing their events, summer dog rules, planting days and more!

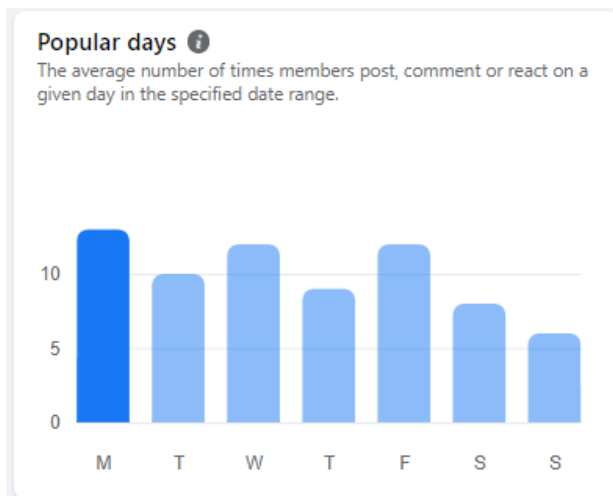
For the period 9 July 2022 - 30 June 2023. There were 23,821 facebook post views during this time. This is an average of almost 2,000 views per month.

ENGAGEMENT



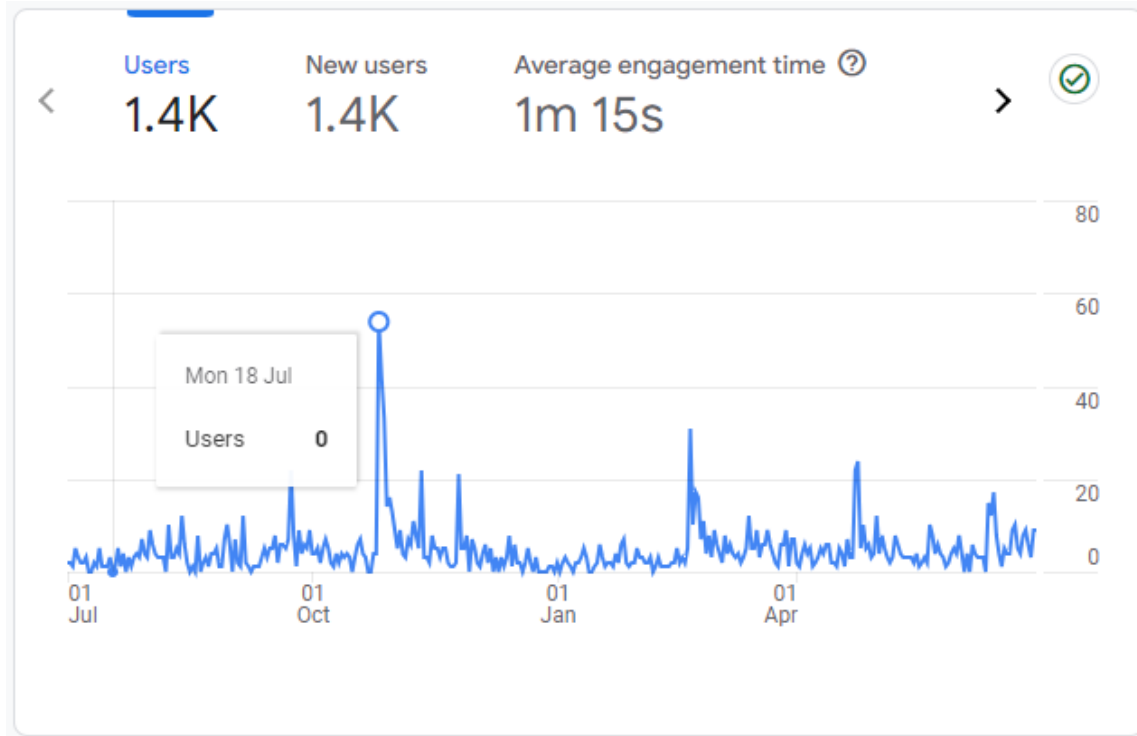
POPULAR DAYS & TIMES

Overall and on average, the most popular day to visit the Alliance Facebook page is a Monday, closely followed by Wednesday and Friday. The most popular time is Friday at 4pm.



PFWRA Website Summary

There were 1,400 new users visiting www.pfwra.org.nz during 1 July 2022 - 30 June 2023.



MOST VIEWED PAGES & SCREENS

Views by Page title and screen class

PAGE TITLE AND SCREEN...	VIEWS
PFWRA Groups	1K
PFWRA Pest ...nges Alliance	739
PFWRA About Us	307
PFWRA Participate	306
PFWRA News	259
PFWRA 20 Acre Wood	190
PFWRA Contact us	179

PFWRA YouTube Summary

Currently the PFWRA's YouTube Channel has 52 videos posted, and 25 subscribers. The most popular video on the channel is Cam Speedy, who has amassed 383 views to date.



PFWRA Merchandise Sales <http://pfwra.ezymerch.co.nz/>

The Alliance set up a merchandise page via PrintPoppa in November 2022. PrintPoppa enables organisations to sell apparel without the need to hold stock or pay upfront. A commission is paid on each sale instead.

We have t-shirts, hoodies and bucket hats on sale currently, and have sold \$556 worth of goods, which resulted in \$86 in commissions for the Alliance.

PFWRA Coordinator Budget

WRLB Funding 2022/23	\$75,000.00
Coordinator Hours (12 Aug 2022 - 26 Sept 2023)	-\$60,824.00
EET Admin	-\$12,176.00
Tools & Mileage	-\$2,000.00
	\$0.00

New Projects Under Development

- **ArcGIS Mapping.** We will be establishing a region-wide database of trapping data. This is also a foundation step for Predator Free 2050 Ltd.
- **Spring is Sprung - A Trappers Recycling Project.** The aim is to reintroduce traps or bait stations into circulation that may otherwise be sitting unused in someone's garage or shed. A further goal is to recruit new volunteers into the group's project.
- **Special Species Spotlight.** Partly funded. Nested within the New Residents Welcome, and in conjunction with Te Kawerau ā Maki, this project seeks to highlight a special species for each village in the Waitākere Ranges, showcasing our native threatened biodiversity, engendering a feeling of ownership for that species amongst residents and encouraging action to protect it. There is an opportunity to incorporate Responsible

Pet Ownership messaging within this campaign.

- **Roadside Restoration.** Funding and Parks & Community Facilities/Auckland Transport dependent. The goal is to address weedy road verges, replanting with native plants. This is, among other goals, a climate change mitigation programme.

Special Species Spotlight - *Taonga of Te Wao Nui a Tiriwa*



Anawhata
Mātātā / Fern bird



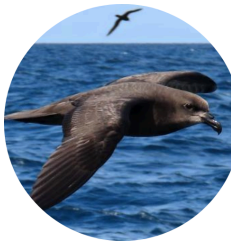
Oratia
Kererū / New Zealand pigeon



Te Henga / Bethells
Matuku-hūrepo / Australasian bittern



Piha
Kororā / Little Blue Penguin



Cornwallis
Ōi / Grey-faced petrel



Swanson
Pekapeka-tou-roa / New Zealand long-tailed bat



Henderson Valley
Miromiro / Tomtit



Titirangi
Giant Kōkopu



Huia
Pepeketua / Hochstetter's frog



Waiatarua
Wētā / Weta



Karekare
Tūturiwhatu / NZ dotterel



Waima
Moko-piri-rakau / Forest gecko



Laingholm
Tuna / Longfin eel



Whatipū
Tara / White-fronted tern

Memorandum

8 February 2024

To: Waitākere Ranges Local Board

Subject: Te Kete Rukuruku Tranche Three Site Selection

From: Dawn Bardsley – Naming Lead

Contact information: dawn.bardsley@aucklandcouncil.govt.nz

Purpose

1. To discuss sites for naming in tranche three of Te Kete Rukuruku programme.

Summary

2. The Waitākere Ranges Local Board have completed two tranches of Māori naming with 40 sites having had Māori names adopted.
3. Tranche three sites now need to be considered.
4. Information has been provided from the draft tranche two list, requests from iwi and previous discussions with the local board, for consideration.
5. Any community consultation should occur prior to the sites being finalised for naming.

Context

6. In September 2019, the Waitākere Ranges Local Board resolved to invite mana whenua to name 20 parks and reserves as tranche one of Te Kete Rukuruku resolution WTK/2019/125. Nineteen names were adopted on 24 June 2021, with one site unnamed as it is owned by the Department of Conservation.
7. In February 2022, the local board invited iwi, resolution WTK/2022/4, to name a further 20 sites and two libraries as tranche two. Twenty-one names were adopted on 22 June 2023 resolution WTK/2023/70. One site at 203 Shaw Road was deferred into tranche three and this is discussed in more detail in paragraph 13 below.
8. Sunvue Park was selected as the site to receive a full suite of new bilingual signage for tranche two and this was installed last year. Te Kawerau ā Maki are working on the full narrative for this site and once finalised an interpretive text will be installed and a whakarewatanga can take place.
9. The local board is requested to now consider what sites they may like to name as tranche three of the programme.

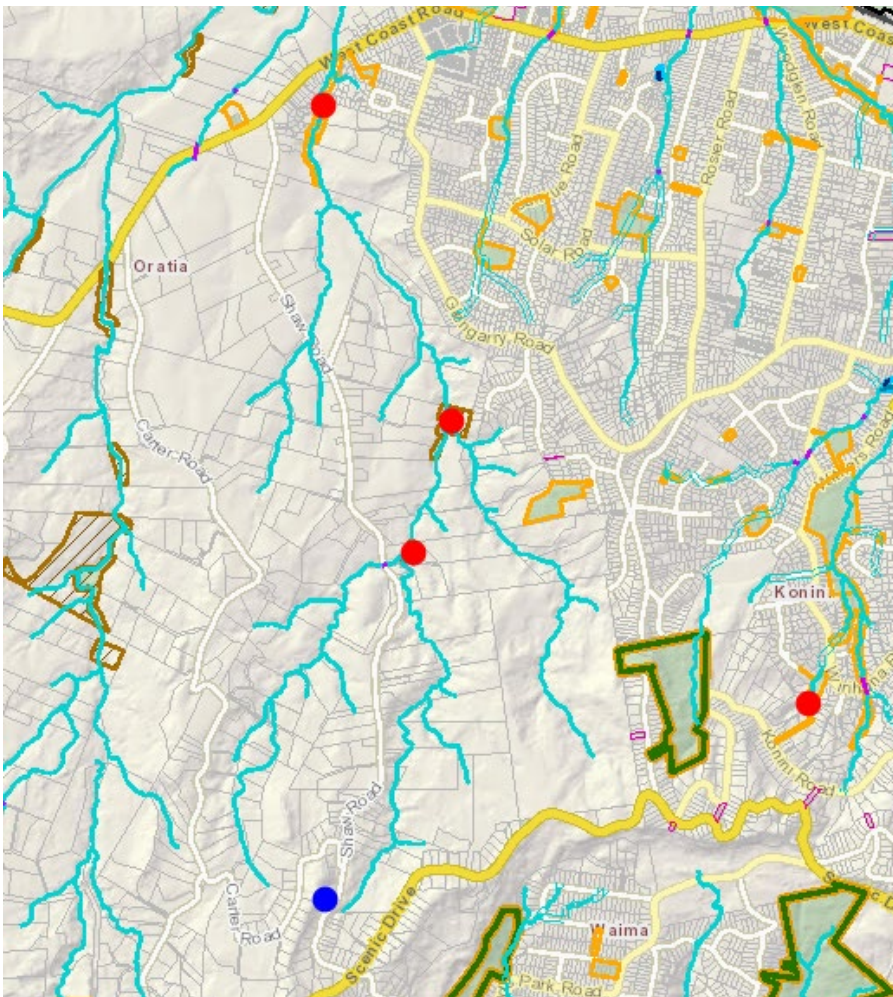
Discussion

10. The local board had extensive discussions when selecting their sites for tranche two, including site visits and photographic records from one member. These visits were documented and the resulting list used as a base for consideration. This list has been updated to show what parks received names in tranche two and is attached. Please refer to Attachment A.

11. It is assumed that parks with existing Māori names will not be prioritised for naming so these have not been highlighted. Ten parks with English names are highlighted and remain on the list for consideration.

Kaurimu

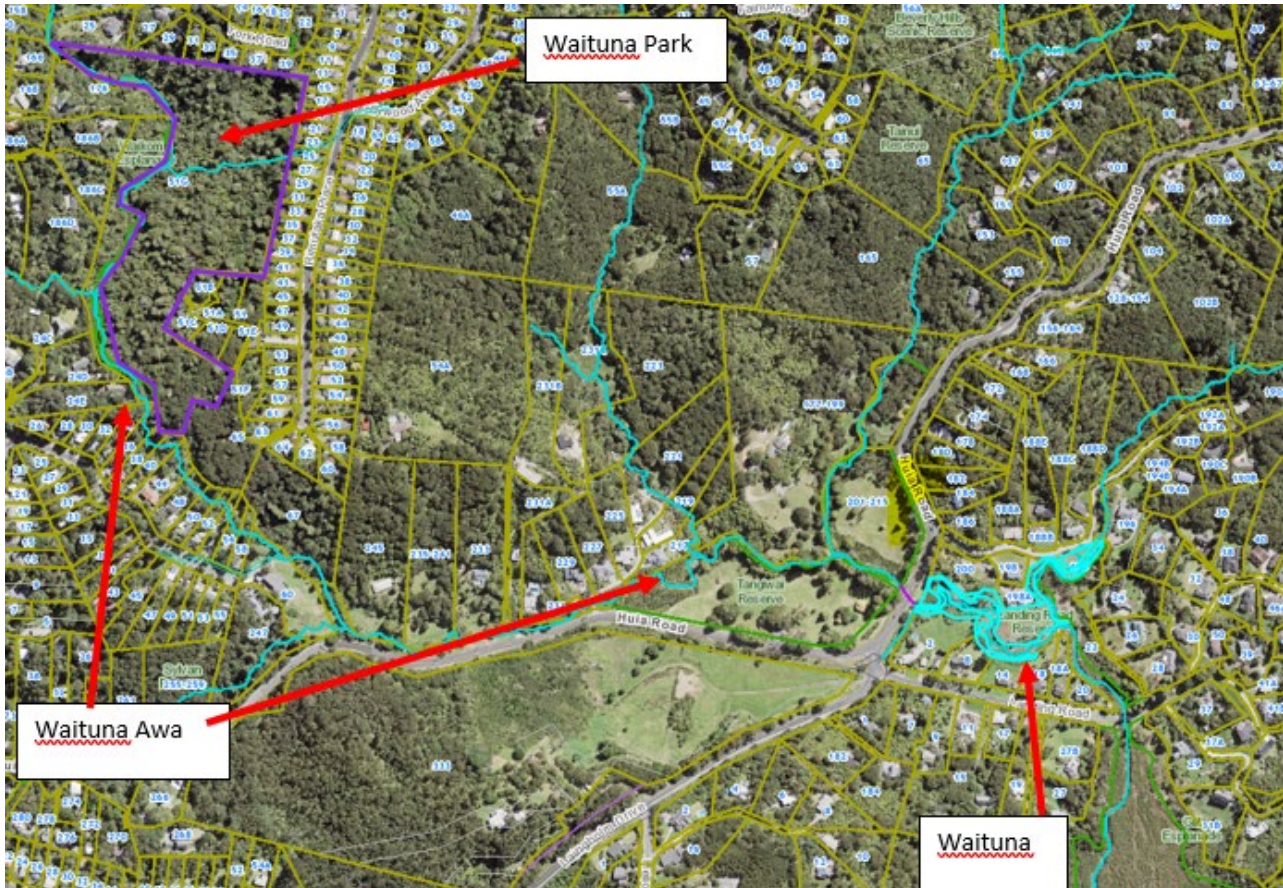
12. Kaurimu is the name of a stream that runs through this local board area. Te Kawerau ā Maki requested that the local board consider including in tranche three:
 - all the sites along the route of the Kaurimu Stream and
 - any parks with the name Kaurimu.
13. This will allow a holistic approach to ensure the name is used in the most appropriate site.
14. There are four parks in the Waitākere Local Board area that currently include the name Kaurimu. See sites shown with red dots on map below.



15. Additionally there is an un-named site originally selected for naming in tranche two that also sits near this awa (stream) shown as a blue dot on the map above. This site is located at 203 Shaw Road and was deferred from tranche two to allow all these sites to be considered together for naming. It is recommended that they all be included in tranche three. It is also recommended that the local board consider sole naming at these sites, rather than continuing the duplication of the name Kaurimu.
16. There are encroachments from neighbouring properties at 203 Shaw Road, and iwi will consider this when finalising any names. Some sites may not warrant the adoption of a Māori name.

Waituna

17. The name Waituna was adopted for a park in tranche one as a sole Māori name. There is another park in the local board area that is also referred to by this name. Please refer to the map below showing locations of the two sites. It is recommended that the local board consider adding these two sites into tranche three to allow for a holistic approach to be undertaken, and to avoid the confusion of having two parks with the same name.



Additional sites for inclusion

18. Parrs Park has previously been discussed and could be considered for tranche three. Discussions with park stakeholders is recommended to ensure people or organisations with interests in this high profile site, are fully informed prior to any final decision being made about naming.
19. It is expected that other iwi will defer to Te Kawerau ā Maki when naming the tranche three sites in this local board area, as that is what has happened in the previous tranches. Ten sites is considered ample for one iwi to be able to name per tranche, with some iwi only doing two or three sites per tranche. It is recommended that a minimum of 10 and a maximum of 20 sites be selected for tranche three, noting that not all sites may be named.
20. A full list of parks is attached including their associated known histories. Please see Attachment B. The local board should consider any additional sites that they feel may warrant naming. This can be discussed in further detail at the workshop if required.

Sole Māori naming

21. The Waitākere Local Board have been leading the way when it comes to sole naming through this programme. Sole naming occurs when the existing English name is removed and a sole Māori name is adopted. This has been previously discussed at length with the local board. Eight sites were adopted with sole Māori names in tranche one and ten in tranche two.

22. Te Kete Rukuruku supports sole naming, particularly in parks where:
 - no signage exists
 - a road name has been used
 - there is little likelihood that the current name is well known or used.
23. Te Kete Rukuruku usually recommends dual naming to allow time for people to get used to new names, without feeling as though they have lost anything. This is intended to minimise risk to the programme, and maximise acceptance and uptake of the Māori names.
24. If the local board would like to adopt further sole Māori names, it is recommended that this discussion occurs early on in the process. This allows for any discussions within the community to occur early, prior to the names being adopted.

Next steps

25. The local board should consider the attached lists and undertake any necessary discussions with relevant stakeholder groups.
26. A list should be finalised and provided to Te Kete Rukuruku by the end of March to allow enough time for:
 - a. a report to be written and presented to a local board business meeting for resolution and
 - b. any necessary discussions completed with iwi before the end of the financial year.

Attachments

Attachment A: Tranche two list with remaining unnamed sites highlighted

Attachment B: Full list of reserves in Waitākere and any associated research

Local Park Profiles

- Prepared by Sandra Coney, Waitakere Ranges Local Board member

Glen Eden parks

1. Tairoa / Nicolas Reserve
2. Tūtohu ~~Glen Close Reserve~~
3. Whetū / Milan Reserve
4. Te Kakau ~~Sunvue Park~~
5. Tautoru / Maywood Reserve
6. Prospect Park
7. Kamara Common
8. Kamara Walk
9. Claridge Street Common
10. Kāhui Whetū / Woodglen Road Reserve
11. George Herring Common
12. Olive Grove
13. Lucinda Place Community Orchard
14. Huihui / Glen Eden Picnic Ground
15. Kīkītara-Levy Reserve
16. Uru / Westview Reserve

Konini /Kaurilands parks

17. Mīharo ~~Shah Park~~
18. Kotinga Reserve
19. John Webster Reserve
20. Ahoaho / Annison Green
21. Pānaki / Withers Reserve
22. Kowhai Reserve
23. Mauku ~~Oredin Green~~

Atkinson Road parks

24. Norman / Atkinson Walkway
25. Akaaka / Clarence Reserve
26. Kōmuri ~~Woodfern Reserve~~
27. Kawaka Reserve
28. Kawa Glade

Titirangi parks

29. Wirihana Park
30. Shay Reserve
31. Kaurimu Park
32. Konini Plantation Reserve
33. Kohu Road Plantation Reserve
34. Kanorau ~~Daffodil Scenic Reserve~~
35. Pūrua ~~Woodside Glen Reserve~~
36. Bishop Park

South Tairangi parks

- 37. Nīoreore South Tairangi Recreation Reserve
- 38. Kuranga / Lopdell Plantation Reserve
- 39. Takahe Reserve
- 40. Tinopai Reserve
- 41. Paturoa Walkway
- 42. Tamariki Reserve

Oratia parks

- 43. 203 Shaw Road

Name of reserve: Prospect Park

Address: 13 Pisces Road, Glen Eden, also long frontage between 88 and 94 Kamara Road. Walkway from park to between 64 and 70 Solar Road.

Size of reserve: 1.6998 ha

Reserve Management Plan: No

Makeup of reserve: Large grassed area with specimen trees and seats. Park contains Glen Eden Community House and parking area, a playground, basketball half-court. There are sealed paths connecting entrances. Currently the portable pump track is located in this park.

Terrain: For the most part is flat, sloping up to western boundary and slopes down on the east side of the driveway.

Any tracks (if bush):

Sign reserve name: yes, large sign on Pisces Road, smaller sign at Kamara Road

Other signs: Large Tress for Babies sign at Kamara Road

Kauri: No

Weeds seen: No

Other comments:



Pisces Road entrance



Kamara Road street frontage and sign



Large Trees for Babies sign on Kamara Road. Path leads to Community House

Name of reserve: Claridge Street Common

Address: 45 Woodglen Road. West end of walkway is at corner Claridge Street and Roick Parade, Glen Eden.

Size of reserve: 0.3899 ha

Reserve Management Plan: No

Makeup of reserve: Well-marked concrete walkway from Rosier Road area to Woodglen Road with bridge over stream. Part of a network of walkways that enable people to get across the area on foot. Oddly shaped reserve, long thin walkway but widens over stream and there is a sloping grassy area at Claridge Street end. Grassed area is very wet as is bottom of catchment. Recent planting of coprosma repens.

Terrain: Gently sloping, but descends into slight gully with stream.

Any tracks (if bush):

Sign reserve name: Yes, at both ends of walkway.

Other signs:

Kauri: No

Weeds seen: A great number in very degraded stream area: onion weed, blue morning glory, privet, ivy.

Other comments:



Frontage on Claridge Street, sloping grassy area.



Sign at entrance to walkway from Claridge Street. Houses on right very close to reserve land.



Bridge through to Woodglen on left, recent planting



Degraded stream area – photo taken from bridge



Woodglen Road entrance to Claridge Street Common.

Name of reserve: **George Herring Common**

Address: 2 George Herring Place

Size of reserve: 0.1290 ha

Reserve Management Plan: No

Makeup of reserve: Very attractive gently sloping rectangular park with specimen trees. Is on a street corner with two long road frontages and good surveillance. Very good amenity but no equipment or seating.

Any tracks (if bush):

Sign reserve name: Yes

Other signs:

Kauri: No

Weeds seen: No

Other comments: This is one of the parks we visited in about 2015 with regard to the Small Parks Improvements Project. I cannot see anything has been done to this reserve.



Street frontage of park

Name of reserve: Olive Grove

Address: 50 Verdale Circle, Glen Eden

Size of reserve: 0.5990 ha

Reserve Management Plan: No

Makeup of reserve: Oblong grassed park in intensive subdivision, small play equipment, seat. Extends to south east and north-west along northern bank of stream. On south boundary is steep bank down to stream. Riparian area has previously been planted as part of PTS but is infested with weeds. Stream also contains rubbish and large fallen trees. Large number of ducks.

Terrain: Main Olive Grove park is flat, but stream banks fall steeply into stream

Any tracks (if bush):

Sign reserve name: Yes

Other signs: Out-of-date pest control sign.

Kauri: No

Weeds seen: Bamboo, willow, wattle, onion weed.

Other comments: Also signs of dumping, rubbish, car tyres, garden rubbish



Play area in Verdale Circle



Stream on boundary of Olive Grove



Bamboo and willow infestation on stream bank

Name of reserve: Lucinda Place Community Orchard

Address: 6a and 6b Lucinda Place, Glen Eden

Size of reserve: 0.3605 ha; also 0.1090 ha at 18 Lucinda Place and numerous other titles part of Project Twin Streams on Woodglen Road, including 2a, 14c, 16c, 22, 22b, 24 Lucinda Place, as well as 338b, 338c, 340b, 344 West Coast Road

Reserve Management Plan: No

Makeup of reserve: Long strip of riparian bank of stream, ex-PTS. Does not appear as park on Geomaps. Contains community garden with a few fruit trees. Garden needs attention and is rather derelict. Native planting along stream in need of attention; also planting on other side of stream at Olive Grove.

Terrain: Flat, with steep banks down to stream.

Any tracks (if bush): No

Sign reserve name: No

Other signs: Locally made sign on fence as in first photo

Kauri: No

Weeds seen: yes, mainly perennial.

Other comments: Local Board has had no visibility of these properties and it is not clear who has the Governance or management.



Entrance to community orchard off Lucinda Place



Community garden in need of attention.



Stream showing dumped car tyres

Name of reserve: **Osman Street Common**

Address: 6 Osman Street, off Captain Scott Road, Glen Eden

Size of reserve: 0.0675 ha

Reserve Management Plan: No

Makeup of reserve: Small section-sized rectangular park, sloping to back boundary. Grassed.

Terrain: Not as flat as photo makes it look. Slopes to back boundary.

Any tracks (if bush):

Sign reserve name: Yes, new sign.

Other signs: No

Kauri: No

Weeds seen: Arum lily

Other comments:



Osman Street Common is a small rectangle of rough grass.

Name of reserve: John Webster Reserve

Address: 6 John Webster Place

Reserve Management Plan: No

Size of reserve:

Makeup of reserve: Small forested reserve fenced off. Small area of grass on south-west corner. Has stream running through. May have been acquired for Watercare.

Any tracks (if bush): No

Sign reserve name: No

Other signs: Covid

Kauri: No

Weeds seen:

Other comments:



Fenced off street frontage. There is a steep drop into a stream behind the fence.



Small grassed area on south-west corner of reserve. Not clear it is reserve. Footpath at right is frontage to John Webster Place.

Name of reserve: **Atkinson/Norman Road Reserve**

Address: Between 15 and 17 Norman Road and 22 and 24 Atkinson Road

Size of reserve: ?

Reserve Management Plan: No

Makeup of reserve: Walkway between Atkinson Road and Norman Road. Probably under AT.

Terrain: Goes through slight gully

Any tracks (if bush): Walkway

Sign reserve name: Yes at both ends

Other signs: Dog

Kauri: Not seen

Weeds seen: Very weedy, agapanthus (some sprayed), Taiwanese cherry, climbing jasmine, arum lily

Other comments:



Norman Road entrance



Atkinson Road entrance

Name of reserve: Shays Reserve

Address: 65-85 Wirihana Road, opposite west end of Wirihana Park

Size of reserve: 0.5223 ha

Reserve Management Plan: No

Makeup of reserve: Long thin forested reserve following Bishop Stream. Does not lead anywhere or link roads.

Terrain: Did not enter but map contours appear not too steep.

Any tracks (if bush): Informal

Sign reserve name: Not for Shays Reserve but old sign saying "Eddie's Bush", with WCC logo on it

Other signs: Watercare

Kauri: ?

Weeds seen:

Other comments:



Entry with Eddie's Bush and Watercare signs

Name of reserve: **Bishop Park**

Address: 201 and 211 Atkinson Road, Titirangi, also runs through to Kopiko Road above 64 Kopiko Road

Size of reserve: 6.5313 ha

Reserve Management Plan: Waitakere Ward Local Reserves Management Plan. High for "Restoration management".

Reserves Act: Scenic Purposes Reserve

Makeup of reserve: Large forested, with steep gullies, weedy at entrances. Did not go further into the reserve.

Terrain: Very steep, drops into gully from Atkinson and Kopiko Road.

Any tracks (if bush): No

Sign reserve name: No

Other signs:

Kauri: Probably

Weeds seen: Climbing asparagus, bartlettina, plectranthus, bilbergia, Taiwanese cherry, bamboo, climbing jasmine. Tutsan infestation on Kopiko Road.

Other comments: Contains scouts hall and other building, currently empty.



Looking into Bishop Reserve from below the old scout den.



Redundant scout den on Atkinson Road needs repurposing.



Weedy road frontage at Kopiko Road

Name of reserve: **203 Shaw Road, Oratia – deferred to tranche three**

Address: 203 Shaw Road, Oratia. Opposite 220-240 Shaw Road

Size of reserve: 0.2992 ha

Reserve Management Plan: No. This is a Recreation Reserve under the Reserves Act.

Makeup of reserve: Level grassy area accessed off Shaw Road. Chain across access. Looks as if an encroachment from neighbouring property.

Not used by public, as it is not clear that it is public land.

Terrain: Flattish area on Shaw Road, land rises steeply, vertically, with forest above it.

Any tracks (if bush): No

Sign reserve name: No

Other signs

Kauri: ?

Weeds seen: Very weed infested in bush surrounding grass area. Cannot see upper area. Particularly tradescantia and ginger.

Other comments:



Note green tradescantia on right foreground. Dark/black areas behind are steep cliff faces.

WAITĀKERE RANGES LOCAL BOARD: Library Research Findings as at 10 August 2018 and new Māori names

Māori Name	Meaning of Māori Name	Existing Name	Street	Locality	Brief origin of existing name	Brief source of existing name	Detailed story of existing name
		341-347 Henderson Valley Road	Henderson Valley Road	Henderson Valley			
		45 Kauri Point Road Reserve	Kauri Point Road	Laingholm			
		537 West Coast Road Esplanade	West Coast Road	Oratia			
		641D West Coast Rd Esp Res (Provisional)	West Coast Road	Oratia			
		Alex Jenkins Memorial	South Titirangi	Titirangi			
		Anamata Stream Reserve	Henderson	Henderson			
Ahoaho	Meaning "open space" this ingoa(name) refers to the green open space that sits at the base of the Te Wao nui ā Tiriwa (also known as the Waitākere Ranges).	Annison Green	Annison Avenue	Glen Eden			
		Arama Reserve	South Titirangi Road	Titirangi	Arama Avenue - Titirangi: named before 1961. Arama could possibly mean a clean path.	Auckland Libraries. <i>Auckland street names guide: Waitakere street names</i> . Retrieved from https://www.aucklandlibraries.govt.nz/Pages/waitakere-street-names.aspx Davenport, J. C. (1990). <i>Street names of Auckland: their story</i> . Akld, N.Z: Hodder &Stoughton.	
		Arapito Foreshore Reserve	Arapito Road	Titirangi	Arapito Road - Titirangi: Named before 1943. 'Ara' a path, and 'pito', the end.	Auckland Libraries. <i>Auckland street names guide: Waitakere street names</i> . Retrieved from https://www.aucklandlibraries.govt.nz/Pages/waitakere-street-names.aspx Davenport, J. C. (1990). <i>Street names of Auckland: their story</i> . Akld, N.Z: Hodder &Stoughton.	
		Arapito Plantation Reserve	South Titirangi Road	Titirangi	Arapito Road - Titirangi: Named before 1943. 'Ara' a path, and 'pito', the end.	Auckland Libraries. <i>Auckland street names guide: Waitakere street names</i> . Retrieved from https://www.aucklandlibraries.govt.nz/Pages/waitakere-street-names.aspx Davenport, J. C. (1990). <i>Street names of Auckland: their story</i> . Akld, N.Z: Hodder &Stoughton.	
		Arapito Reserve	Arapito Road	Titirangi	Arapito Road - Titirangi: Named before 1943. 'Ara' a path, and 'pito', the end.	Auckland Libraries. <i>Auckland street names guide: Waitakere street names</i> . Retrieved from https://www.aucklandlibraries.govt.nz/Pages/waitakere-street-names.aspx Davenport, J. C. (1990). <i>Street names of Auckland: their story</i> . Akld, N.Z: Hodder &Stoughton.	
		Armour Bay Reserve	Armour Road	Parau	The Armours were early farmers in the area. Armour Road - Titirangi: Named between 1961 and April 1975.	Auckland Libraries. <i>Waitakere street names</i> . Retrieved July 23, 2018, from https://www.aucklandlibraries.govt.nz/Pages/waitakere-street-names.aspx Macdonald, F. & Kerr, R. (Eds.). (2009). <i>West: the history of Waitakere</i> . Auckland, N.Z.: Random House NZ.	
		Atarua Way	Raroa Terrace	Waiatarua	Atarua Gardens - Waitākere: Named between 1961 and April 1975.	Auckland Libraries. <i>Auckland street names guide: Waitakere street names</i> . Retrieved July 23, 2018, from https://www.aucklandlibraries.govt.nz/Pages/waitakere-street-names.aspx	
		Atarua Way Reserve (Provisional)	Raroa Terrace	Waiatarua	Atarua Gardens - Waitākere: Named between 1961 and April 1975.	Auckland Libraries. <i>Auckland street names guide: Waitakere street names</i> . Retrieved July 23, 2018, from https://www.aucklandlibraries.govt.nz/Pages/waitakere-street-names.aspx	
		Atkinson / Norman Road Reserve	Atkinson Road	Titirangi	Named after prominent settler and Titirangi land owner, Henry Atkinson, who gifted substantial tracts of his land in the area to the City, so helping to solve its water supply problem.	Harvey, B. & T. (2011). <i>Titirangi, Fringe of Heaven</i> . Auckland, NZ: West Auckland Historical Society.	
		Awhiorangi Reserve	Scenic Drive North	Swanson	Awhiorangi Promenade - Waitākere: Named before 1961.	Auckland Libraries. <i>Auckland street names guide: Waitakere street names</i> . Retrieved July 23, 2018, from https://www.aucklandlibraries.govt.nz/Pages/waitakere-street-names.aspx	
		Bendalls Esplanade	Bush Road	Waiatarua			
		Bethells Road Esplanade Reserv	Bethells Road	Bethells	John Neale Bethell was a very early settler on Auckland's west coast, first acquiring land at Te Henga. Bethells Road - Waitākere: Named between 1961 and April 1975.	Auckland Libraries. <i>Auckland street names guide: Waitakere street names</i> . Retrieved from https://www.aucklandlibraries.govt.nz/Pages/waitakere-street-names.aspx Davenport, J. C. (1990). <i>Street names of Auckland: their story</i> . Akld, N.Z: Hodder &Stoughton.	

Māori Name	Meaning of Māori Name	Existing Name	Street	Locality	Brief origin of existing name	Brief source of existing name	Detailed story of existing name
		341-347 Henderson Valley Road	Henderson Valley Road	Henderson Valley			
		Bethells Road Esplanade Reserve B (Prov)	Bethells Road	Bethells	John Neale Bethell was a very early settler on Auckland's west coast, first acquiring land at Te Henga. Bethells Road - Waitākere: Named between 1961 and April 1975.	Auckland Libraries. <i>Auckland street names guide: Waitakere street names</i> . Retrieved from https://www.aucklandlibraries.govt.nz/Pages/waitakere-street-names.aspx Davenport, J. C. (1990). <i>Street names of Auckland: their story</i> . Akld, N.Z: Hodder & Stoughton.	
		Beverly Hills Scenic	Tainui Road	Titirangi			
		Big Muddy Creek Esplanade	Huia Road	Parau			
		Big Muddy Creek Landing	Huia Road	Parau	The traditional Kawerau name of the area is Paruroa. This area has a particular significance for Kawerau because it was here that the initial battles with the Waiohau and Ngati Whatua tribes began.	Waitakere City Council. (2001). <i>Manukau Harbour foreshore reserves management plan</i> . Auckland, N.Z.: Waitakere City Council.	The traditional Kawerau name of the area is Paruroa. This area has a particular significance for Kawerau because it was here that the initial battles with the Waiohau and Ngati Whatua tribes began. In this vicinity there are a number of Kawerau urupa or burial sites in particular Puke Atua, Muri o Hikurangi, Piroro and Pekeke. Waitakere City Council. (2001). <i>Manukau Harbour foreshore reserves management plan</i> . Auckland, N.Z.: Waitakere City Council.
		Bill Haresnape Walk	Aydon Road	Titirangi	Bill Haresnape was a local resident, architect, city councillor and teacher who designed a number of modernist houses in the Waitakere Ranges including his award-winning family home the Haresnape House. This bush track was named in his honour.	Smith, G. 2010. <i>Architects - Bill Haresnape</i> . Retrieved 10 August 2018 from http://www.lostproperty.org.nz/architects/bill-haresnape/	
		Bishop Park	Atkinson Road	Titirangi	The Bishop family were prominent settlers in the Titirangi area. John and Elizabeth Bishop moved there in 1858 when they purchased a farm. John was a carpenter by trade. Their various descendants lived in the area for many years.	Harvey, B. & T. (2011). <i>Titirangi, Fringe of Heaven</i> . Auckland, NZ: West Auckland Historical Society.	
		Brandon Walk	Brandon Road	Glen Eden	Brandon Road - Glen Eden: Named well before 1961.	Auckland Libraries. <i>Auckland street names guide: Waitakere street names</i> . Retrieved July 23, 2018, from https://www.aucklandlibraries.govt.nz/Pages/waitakere-street-names.aspx	
		Burtons Drive Reserve	Burtons Drive	Swanson			
		Bush Road Plantation	Bush Road	Waiatarua	Bush Road - Henderson Valley: Noted by Waitemata County on 17 February 1928. One of the old tracks and routes from Henderson township into the Waitākere ranges.	Auckland Libraries. <i>Auckland street names guide: Waitakere street names</i> . Retrieved July 23, 2018, from https://www.aucklandlibraries.govt.nz/Pages/waitakere-street-names.aspx	
		Bush Road Reserve	Bush Road	Waiatarua	Bush Road - Henderson Valley: Noted by Waitemata County on 17 February 1928. One of the old tracks and routes from Henderson township into the Waitākere ranges.	Auckland Libraries. <i>Auckland street names guide: Waitakere street names</i> . Retrieved July 23, 2018, from https://www.aucklandlibraries.govt.nz/Pages/waitakere-street-names.aspx	
		Carter Road Esplanade	Carter Road	Oratia	Carter(s) Road - Waitākere: Carter Road noted by Waitemata County on 17 February 1928. Named after the Carter family, who lived in Parker's Road, Ōrātia, around 1922.	Auckland Libraries. <i>Auckland street names guide: Waitakere street names</i> . Retrieved July 23, 2018, from https://www.aucklandlibraries.govt.nz/Pages/waitakere-street-names.aspx	
		Cascade Reserve	Cascade Avenue	Waiatarua	Cascade Avenue - Waitākere: Named before 1961.	Auckland Libraries. <i>Auckland street names guide: Waitakere street names</i> . Retrieved July 23, 2018, from https://www.aucklandlibraries.govt.nz/Pages/waitakere-street-names.aspx	

Māori Name	Meaning of Māori Name	Existing Name	Street	Locality	Brief origin of existing name	Brief source of existing name	Detailed story of existing name
		341-347 Henderson Valley Road	Henderson Valley Road	Henderson Valley			
Ōkaurirahi	In pre-European times this area was distinguished by its mature kauri forest. This is acknowledged in the name Ōkaurirahi, “the place of huge kauri”. The nearby area, known as Kaurilands, is also a historical connector to these majestic trees. The name Ōkaurirahi is being returned to the whenua and to the people of Tāmaki Makaurau by Te Kawerau ā Maki, mana whenua of Hikurangi / West Auckland. Te Kawerau ā Maki has occupied this area for over 400 years. Kauri is a significant tree species regarded by Te Kawerau ā Maki as a taonga (treasure). They see the kauri as a living ancestor, chief of the forest, and connector to the spiritual realm and atua. This is reflected in the whakatauki “Kua hinga te kauri o te wao nui a Tāne” (The kauri has fallen in the sacred forest of Tāne), often quoted when a person of great mana passes away. Kauri are frequently given significant names in recognition of their chiefly status within the forest. They are sometimes referred to as te whakaruruhau (the protector), referring to the vast number of species and ecology that the kauri supports, shelters and provides for. Not only was kauri timber used to make waka, build whare and for carving pou, the kāpia (gum) had important uses as well. It was burned as a natural insecticide, used to start fires and even chewed like chewing gum. The soot from the burnt gum was mixed with oil or fat and then used in tā moko (traditional Māori tattooing). Logging, burning, construction and international trade contributed to the decline of these magnificent taonga. In more recent times, introduced animal pests and disease have continued to add to the demise of the kauri. Te Kawerau ā Maki, as kaitiaki, continue to protect the forest for future generations. “Tiakina te wao nui a Tiriwa, hei oranga mōu”, Treasure the vast domain of Tiriwa and in turn you shall benefit.”	Ceramco Park	Glendale Road	Glen Eden	Made up of several parcels of land (originally farmland) which was either part of a residential subdivision or quarried for clay by the Amalgamated Brick and Pipe Co. (Ceramco Properties Ltd) between 1968 and 1976.	Waitakere City Council. (2000). <i>Ceramco Park and Kaurilands Domain reserve management plan</i> . Auckland, N.Z.: Waitakere City Council.	All areas of land comprising Ceramco Park and Kaurilands Domain were vested with Council between 1958 and 1984. Ceramco Park is made up of several parcels of land (originally farmland) which was either part of a residential subdivision, or quarried for clay by the Amalgamated Brick and Pipe Co. (Ceramco Properties Ltd) between 1968 and 1976. To overcome town planning resistance at the time, an agreement was reached whereby the quarry land was to be purchased back by Council for a recreational reserve, once clay had been removed to a predetermined level. Source: Waitakere City Council. (2000). Ceramco Park and Kaurilands Domain reserve management plan. Auckland, N.Z.: Waitakere City Council.
		Christine Esplanade	Holdens Road	Henderson			
Akaaka	Akaaka means vine. Extensive kauri forest once covered this area. The kauri is a host tree for many vines and epiphytes. Akaaka refers to the vine of any climbing plant and connects to the climbing theme of the playground located here.	Clarence Reserve	Chamari Close	Titirangi			
		Claridge Street Common	Woodglen Road	Glen Eden			
		Claude Able Reserve	Garden Road	Piha	Named Claude Abel Reserve by locals in memory of one of the most avid supporters of the project to develop this reserve.	Coney, Sandra. (n.d.). <i>History of the Lily Pond</i> . Retrieved 7 August 2018 from http://www.piha.co.nz/history-of-the-lily-pond/	
Koroī	Kauri, kaikawaka and kawaka are the only native conifers to produce woody cones that split open when mature, releasing seeds into the wind. Korōi is the Māori name for their coniferous cone. This name connects to the historical presence of the kauri forest that used to be here. This is reflected in the old name for the wider Glen Eden area Ōkaurirahi – ‘the place of countless kauri’.	Clayburn Reserve	Clayburn Road	Glen Eden	Clayburn Road - Glen Eden: Named well before 1961. See also Claywest Place.	Auckland Libraries. Auckland street names guide: Waitakere street names. Retrieved July 23, 2018, from https://www.aucklandlibraries.govt.nz/Pages/waitakere-street-names.aspx	
		Cochran Esplanade	Carter Road	Oratia	Cochran - The name of local landowners. Cochran Avenue - Waikumete: Noted by Waitemata County on 17 February 1928.	Auckland Libraries. <i>Auckland street names guide: Waitakere street names</i> . Retrieved from https://www.aucklandlibraries.govt.nz/Pages/waitakere-street-names.aspx Davenport, J. C. (1990). <i>Street names of Auckland: their story</i> . Akld, N.Z: Hodder &Stoughton.	
		Cochran Stream Esplanade	West Coast Road	Oratia	Cochran - The name of local landowners. Cochran Avenue - Waikumete: Noted by Waitemata County on 17 February 1928.	Auckland Libraries. <i>Auckland street names guide: Waitakere street names</i> . Retrieved from https://www.aucklandlibraries.govt.nz/Pages/waitakere-street-names.aspx Davenport, J. C. (1990). <i>Street names of Auckland: their story</i> . Akld, N.Z: Hodder &Stoughton.	
		Cornwallis Road Reserve	Cornwallis Road	Cornwallis	In 1883, Captain William Cornwallis Symonds, an agent on behalf of the New Zealand Waitemata and Manukau Harbour Company, sold the land that became known as Cornwallis.	<i>Cornwallis, Waitakere Ranges Regional Park</i> . Retrieved July 23, 2018, from https://www.cornwallis.org.nz/history	
		Crows Park	Crows Road	Swanson	Crows Park and Crows Road were named after Charlie Crowe, a local carrier.	Davenport, J. C. (1990). <i>Street names of Auckland: their story</i> . Akld, N.Z: Hodder &Stoughton.	
Kanorau	Kanorau means to be diverse or varied. This name has been chosen to represent the various species of trees and plants within this reserve, including kauri, rimu, manuka, nikau and daffodils.	Daffodil Scenic Reserve	30a Daffodil St	Titirangi	From 1912 to the 1940s, a daffodil farm was operated here by Albert and Ethel Thomas and their family, and is remembered in the name. The farm was half planted in daffodils and half in strawberries.	Macdonald, F. & Kerr, R. (Eds.). (2009). <i>West: the history of Waitakere</i> . Auckland, N.Z.: Random House NZ. Harvey, B. & T. (2011). <i>Titirangi, Fringe of Heaven</i> . Auckland, NZ: West Auckland Historical Society.	
		Davies Bay Reserve	Mcelandowney	Titirangi			
		Douglas Scenic Reserve	Rimu Road	Oratia			
		Driving Esplanade	Forest Hill Road	Henderson			

Māori Name	Meaning of Māori Name	Existing Name	Street	Locality	Brief origin of existing name	Brief source of existing name	Detailed story of existing name
		341-347 Henderson Valley Road	Henderson Valley Road	Henderson Valley			
		Duck Park	Captain Scott Road	Glen Eden	In 1971 the Mayor, Mr Monteith, suggested Council develop the rear area of, what was then, Recreation Reserve (now Harold Moody Reserve). Earthmoving contractors, Duck Bros Ltd, undertook the work, and in recognition, the top ground was named Duck Park.	Glen Eden Borough Council? (n.d.). <i>Recreation Ground and Duck Park Reserve draft management plan</i> . Auckland, N.Z.: Glen Eden Borough Council?	Duck Park was undeveloped and used as a grazing area for animals until the 1970s. In 1971 the presiding Mayor, Mr Monteith, suggested the Council develop the rear area of, what was then, Recreation Reserve (now renamed Harold Moody Reserve). Earthmoving contractors, Duck Bros Ltd, undertook the bulldozing and levelling of the ground, and in recognition, the top ground of, what was then known as, Recreation Reserve (now Harold Moody Reserve) was named Duck Park. The two reserves share a common certificate of title. The area was classified as a Recreation Reserve by Gazette, 1981. Source: Waitakere City Council. (n.d.). <i>Recreation Ground and Duck Park Reserve draft management plan</i> . Auckland, N.Z.: Waitakere City Council.
		Fawcett Esplanade	Fawcett Road	Laingholm	Fawcett Road - Titirangi: Named between 1961 and April 1975.	Auckland Libraries. <i>Auckland street names guide: Waitakere street names</i> . Retrieved July 23, 2018, from https://www.aucklandlibraries.govt.nz/Pages/waitakere-street-names.aspx	
		Fawcett Scenic Reserve	Fawcett Road	Laingholm	Fawcett Road - Titirangi: Named between 1961 and April 1975.	Auckland Libraries. <i>Auckland street names guide: Waitakere street names</i> . Retrieved July 23, 2018, from https://www.aucklandlibraries.govt.nz/Pages/waitakere-street-names.aspx	
Maea	Maea means to emerge, arise, appear or become visible. The name refers to the view of the ranges from the park, especially in the morning when you can sometimes see the trees emerging from the fog.	Foothills Lane Reserve	Foothills Lane	Glen Eden			
		Foster Ave Walkway	Foster Avenue	Huia	Foster Bay was named after Jack Foster, a bush contractor living in Huia in the early 1900s. Foster Avenue - Titirangi: Named between 1961 and April	Auckland Libraries. <i>Waitakere street names</i> . Retrieved July 23, 2018, from https://www.aucklandlibraries.govt.nz/Pages/waitakere-street-names.aspx Macdonald, F. & Kerr, R. (Eds.). (2009). <i>West: the history of Waitakere</i> . Auckland, N.Z.: Random House NZ.	
		Foster Bay Reserve	Foster Avenue	Huia	Foster Bay was named after Jack Foster, a bush contractor living in Huia in the early 1900s. Foster Avenue - Titirangi: Named between 1961 and April	Auckland Libraries. <i>Waitakere street names</i> . Retrieved July 23, 2018, from https://www.aucklandlibraries.govt.nz/Pages/waitakere-street-names.aspx Macdonald, F. & Kerr, R. (Eds.). (2009). <i>West: the history of Waitakere</i> . Auckland, N.Z.: Random House NZ.	
		Foster Hill Lane	Huia Road	Huia	Foster Bay was named after Jack Foster, a bush contractor living in Huia in the early 1900s. Foster Avenue - Titirangi: Named between 1961 and April	Auckland Libraries. <i>Waitakere street names</i> . Retrieved July 23, 2018, from https://www.aucklandlibraries.govt.nz/Pages/waitakere-street-names.aspx Macdonald, F. & Kerr, R. (Eds.). (2009). <i>West: the history of Waitakere</i> . Auckland, N.Z.: Random House NZ.	
		Foster Strand	Foster Avenue	Huia	Foster Bay was named after Jack Foster, a bush contractor living in Huia in the early 1900s. Foster Avenue - Titirangi: Named between 1961 and April	Auckland Libraries. <i>Waitakere street names</i> . Retrieved July 23, 2018, from https://www.aucklandlibraries.govt.nz/Pages/waitakere-street-names.aspx Macdonald, F. & Kerr, R. (Eds.). (2009). <i>West: the history of Waitakere</i> . Auckland, N.Z.: Random House NZ.	
		French Bay Esplanade	Valley Road	Titirangi	French Bay was previously known as Opou Bay and Otitori Bay. It was known as French Bay from the 1920s but the origin of the name is not known.	Davenport, J. C. (1990). <i>Street names of Auckland: their story</i> . Auckland, N.Z.: Hodder & Stoughton Harvey, B. & T. (2011). <i>Titirangi, Fringe of Heaven</i> . Auckland, NZ: West Auckland Historical Society.	
		French Bay Reserve	Valley Road	Titirangi	French Bay was previously known as Opou Bay and Otitori Bay. It was known as French Bay from the 1920s but the origin of the name is not known.	Davenport, J. C. (1990). <i>Street names of Auckland: their story</i> . Auckland, N.Z.: Hodder & Stoughton Harvey, B. & T. (2011). <i>Titirangi, Fringe of Heaven</i> . Auckland, NZ: West Auckland Historical Society.	

Māori Name	Meaning of Māori Name	Existing Name	Street	Locality	Brief origin of existing name	Brief source of existing name	Detailed story of existing name
		341-347 Henderson Valley Road	Henderson Valley Road	Henderson Valley			
		Garden Road Plant Reserve	Garden Road	Piha	Garden Road - Piha: Named between 1961 and April 1975.	Auckland Libraries. <i>Auckland street names guide: Waitakere street names</i> . Retrieved July 23, 2018, from https://www.aucklandlibraries.govt.nz/Pages/waitakere-street-names.aspx	
		Garden Road Walkway	Garden Road	Piha	Garden Road - Piha: Named between 1961 and April 1975.	Auckland Libraries. <i>Auckland street names guide: Waitakere street names</i> . Retrieved July 23, 2018, from https://www.aucklandlibraries.govt.nz/Pages/waitakere-street-names.aspx	
		George Herring Common	Woodglen Road	Glen Eden			
Pikopiko	Pikopiko means to be meandering, wandering or winding. This name relates to the water that this esplanade backs on to. Pikopiko is also the name for edible young, furred fern shoots such as those of the hen and chicken fern (also called pikopiko). These ferns would once have been prevalent in Te Wao-nui-a-Tiriwa - the great realm of Tiriwa.	Gill Esplanade	Landing Road	Titirangi			
Tūtohu	Tūtohu is to point out and indicate. This refers to the stars that are visible from the area in the night sky. It also connects with the astral theme of the nearby streets such as Aquarius Avenue and Libra street.	Glen Close Reserve	Glen Close	Glen Eden			
Huihui	Huihui means to come together, gather or meet. This park is a place to come and gather together and meet (for a picnic). This ingoa (name) also also relates to the constellations (or gatherings) of stars referred to in the surrounding streets, commonly known as the constellation area.	Glen Eden Picnic Ground	Glendale Road	Glen Eden	In 1984, at the request of residents who found the name unnecessarily long and confusing, the council renamed the reserve (Resolution 7872 on 14/11/84) from Lucinda Place/Glendale Road Picnic Ground Reserve to simply, 'Picnic Ground'.	Glen Eden Borough Council? (n.d.). <i>Picnic Ground final management plan</i> . Auckland, N.Z.: Glen Eden Borough Council?	In 1984, at the request of residents who found the name unnecessarily long and confusing, the council renamed the reserve (Resolution 7872 on 14/11/84) from Lucinda Place/Glendale Road Picnic Ground Reserve to simply, 'Picnic Ground'. The land was originally purchased in 1880 by Roland Hill and, together with Lucinda Reserve, was the site of a flaxmill he established. The remains of what was probably the water race and dam site are still in evidence but this is not conclusive. At the turn of the century this land (incorporated in a 120 acre block) was purchased by William and Esther Levy and developed into a farm/orchard/nursery. Only a small portion of this land is reserve, the rest was purchased by Council in 1950 from Dr and Mrs H Moody for one thousand dollars. A commemorative plaque in recognition of William Levy was placed under the giant Redwoods. Source: Glen Eden Borough Council? (n.d.). <i>Picnic Ground final management plan</i> . Auckland, N.Z.: Glen Eden Borough Council?
		Glenesk Road Plant Reserve 1	Glenesk Road	Piha	Glenesk Road - Waitākere: Named between 1961 and April 1975.	Auckland Libraries. <i>Auckland street names guide: Waitakere street names</i> . Retrieved July 23, 2018, from https://www.aucklandlibraries.govt.nz/Pages/waitakere-street-names.aspx	
		Glenesk Road Plant Reserve 2	Glenesk Road	Piha	Glenesk Road - Waitākere: Named between 1961 and April 1975.	Auckland Libraries. <i>Auckland street names guide: Waitakere street names</i> . Retrieved July 23, 2018, from https://www.aucklandlibraries.govt.nz/Pages/waitakere-street-names.aspx	
Puananī	Puananī are wind dispersed seeds. The name relates to the kauri seeds that are dispersed by the wind in this area, once known as Ōkaurirahi. Ōkaurirahi is the name of the wider Glen Eden area meaning "the place of huge kauri". In pre-European times the upper part of this sub-catchment was distinguished by its mature kauri forest.	Glucina Reserve	Palm Court Drive	Glen Eden	Close to Glucina Place, which was named after Ivan Glucina who had a vineyard here during the earlier part of the 20th century.	Davenport, J. C. (1990). <i>Street names of Auckland: their story</i> . Akld, N.Z: Hodder &Stoughton.	
		Grassmere Reserve	Long Road	Henderson Valley	Grassmere Road - Waitākere: Named before 1961, after the lake, and the site of the large salt works, southeast of Blenheim. Lake Grassmere [sic] is in Westmoreland, England. A ship <i>Grassmere</i> visited Auckland in 1863.	Auckland Libraries. <i>Auckland street names guide: Waitakere street names</i> . Retrieved from https://www.aucklandlibraries.govt.nz/Pages/waitakere-street-names.aspx Davenport, J. C. (1990). <i>Street names of Auckland: their story</i> . Akld, N.Z: Hodder &Stoughton.	
		Handley Plantation Reserve	West Coast Road	Oratia			

Māori Name	Meaning of Māori Name	Existing Name	Street	Locality	Brief origin of existing name	Brief source of existing name	Detailed story of existing name
		341-347 Henderson Valley Road	Henderson Valley Road	Henderson Valley			
		Harold Moody Reserve	Glendale Road	Glen Eden	In an early Draft Management plan (date unknown) Harold Moody Reserve is referred to as 'Recreation Ground Reserve' and was one of the first playing fields in Glen Eden.	Glen Eden Borough Council? (n.d.). <i>Recreation Ground and Duck Park Reserve draft management plan</i> . Auckland, N.Z.: Glen Eden Borough Council.	Recreation Ground (later Harold Moody Reserve and Duck Park Reserve share a common certificate of title. The land, drained and levelled by relief workers during the depression, was purchased by the Glen Eden Town Board from Mr A. J. Routley in 1924. Before this the only playing field in Glen Eden was a converted cow paddock. Source: Waitakere City Council. (n.d.). <i>Recreation Ground and Duck Park Reserve draft management plan</i> . Auckland, N.Z.: Waitakere City Council.
DoC owned		Henderson Valley Scenic	Candia Road	Henderson Valley	Henderson - after Thomas Henderson. A much older name for Henderson Valley is Opanuku (belonging to Panuku - a famous ancestor of Te Kawerau a Maki) now reflected in the name of the stream that has formed the valley, and the watershed that feeds it.	Davenport, J. C. (1990). <i>Street names of Auckland: their story</i> . Auckland, N.Z.: Hodder & Stoughton Waitakere City Council. (2010). Evaluation of the proposed boundary for the Henderson Valley/Opanuku local area plan. Auckland, N.Z.: Waitakere City Council.	Henderson Valley Road - Waitākere: This was opened for settlement shortly after 1911, when the Coronation Bridge was built. Noted by Waitemata County on 27 May 1925, along with Henderson South Road. Henderson Block numbers 1 and 2 roads noted by Waitemata County on 17 February 1928. Henderson: After Thomas Henderson who purchased land in the area and established a sawmill in 1849. He was also a member of the Auckland Provincial Council from 1855-1857, an MP from 1855-1867 and 1871-1874 and a member of the Legislative Council from 1878-1886. A much older name for Henderson Valley is Opanuku (belonging to Panuku - a famous ancestor of Te Kawerau a Maki) which is now reflected in the name of the stream that has formed the Valley, and the watershed that feeds it. Sources: Auckland Libraries. <i>Auckland street names guide: Waitakere street names</i> . Retrieved July 23, 2018, from https://www.aucklandlibraries.govt.nz/Pages/waitakere-street-names.aspx Davenport, J. C. (1990). <i>Street names of Auckland: their story</i> . Auckland, N.Z.: Hodder & Stoughton Waitakere City Council. (2010). Evaluation of the proposed boundary for the Henderson Valley/Opanuku local area plan. Auckland, N.Z.: Waitakere City Council.
		Herrings Cove	Herrings Cove	Titirangi			
		Hibernia Stream Esplanade	Glendale Road	Glen Eden			
		Huia Domain	Huia Road	Huia	Huia: This area has particular significance to Te Kawerau A Maki. It was named and occupied by the famous rangitira, Maki and known as Te Rau O Te Huia, meaning the many treasures. The name came from one of his original kainga at Kawhia and Whaingaroa.	Waitakere City Council. (2001). <i>Manukau Harbour foreshore reserves management plan</i> . Auckland, N.Z.: Waitakere City Council.	The area of Huia is of particular significance to Te Kawerau A Maki. It was named and occupied by the famous rangitira Maki and known as Te Rau O Te Huia. The name came from one of his original kainga at Kawhia and Whaingaroa meaning the many treasures, which, by analogy, is taken to mean a region of immense resource. Huia Road - Titirangi: Developed from a horse track serving the timber workings from the 1880s, it was around 10 miles long and lead to the Huia settlement. The first plans date from 1927. Sources: Auckland Libraries. <i>Auckland street names guide: Waitakere street names</i> . Retrieved July 23, 2018, from https://www.aucklandlibraries.govt.nz/Pages/waitakere-street-names.aspx Waitakere City Council. (2001). <i>Manukau Harbour foreshore reserves management plan</i> . Auckland, N.Z.: Waitakere City Council.
		Huia Scenic Reserve	Ocean View Road	Huia	Huia: This area has particular significance to Te Kawerau A Maki. It was named and occupied by the famous rangitira Maki and known as Te Rau O Te Huia, meaning the many treasures. The name came from one of his original kainga at Kawhia and Whaingaroa.	Waitakere City Council. (2001). <i>Manukau Harbour foreshore reserves management plan</i> . Auckland, N.Z.: Waitakere City Council.	

Māori Name	Meaning of Māori Name	Existing Name	Street	Locality	Brief origin of existing name	Brief source of existing name	Detailed story of existing name
		341-347 Henderson Valley Road	Henderson Valley Road	Henderson Valley			
		Inaka Esplanade	Inaka Place	Titirangi	The name Inaka should actually read Inanga. The area is generally known as Otitore and is an ancestral Kawerau boundary, titore, meaning cut-off point. Inaka Place - Titirangi: Named between 1961 and April 1975.	Auckland Libraries. <i>Waitakere street names</i> . Retrieved July 23, 2018, from https://www.aucklandlibraries.govt.nz/Pages/waitakere-street-names.aspx Waitakere City Council. (2001). <i>Manukau Harbour foreshore reserves management plan</i> . Auckland, N.Z.: Author.	
		John Webster Reserve	John Webster Place	Glen Eden			
		Jonkers Road Recreation Reserve (Prov)	Jonkers Road	Waitakere			
		Kamara Road Common	Kamara Road	Glen Eden	Kamara Road - Glen Eden: Formerly Campbell Road to February 1969.	Auckland Libraries. <i>Auckland street names guide: Waitakere street names</i> . Retrieved July 23, 2018, from https://www.aucklandlibraries.govt.nz/Pages/waitakere-street-names.aspx	
		Kamara Walk	Kamara Road	Glen Eden	Kamara Road - Glen Eden: Formerly Campbell Road to February 1969.	Auckland Libraries. <i>Auckland street names guide: Waitakere street names</i> . Retrieved July 23, 2018, from https://www.aucklandlibraries.govt.nz/Pages/waitakere-street-names.aspx	
		Karamatura Reserve	Huia Road	Huia			
		Karekare Plant Reserve	Karekare Road	Karekare	One meaning of Karekare is surf. Also known as Waikarekare. Kare Kare Road - Waikumete: Noted by Waitemata County on 27 May 1954.	Auckland Libraries. <i>Waitakere street names</i> . Retrieved 2018, from https://www.aucklandlibraries.govt.nz/Pages/waitakere-street-names.aspx Diamond, J.T. & Hayward, B.W. (1979). <i>The Maori history and legends of the Waitakere Ranges</i> . Akld, N.Z.: Lodestar.	
		Karekare Reserve	Karekare Road	Karekare	One meaning of Karekare is surf. Also known as Waikarekare. Kare Kare Road - Waikumete: Noted by Waitemata County on 27 May 1954.	Auckland Libraries. <i>Waitakere street names</i> . Retrieved 2018, from https://www.aucklandlibraries.govt.nz/Pages/waitakere-street-names.aspx Diamond, J.T. & Hayward, B.W. (1979). <i>The Maori history and legends of the Waitakere Ranges</i> . Akld, N.Z.: Lodestar.	
		Karekare Scenic Reserve	Karekare Road	Karekare	One meaning of Karekare is surf. Also known as Waikarekare. Kare Kare Road - Waikumete: Noted by Waitemata County on 27 May 1954.	Auckland Libraries. <i>Waitakere street names</i> . Retrieved 2018, from https://www.aucklandlibraries.govt.nz/Pages/waitakere-street-names.aspx Diamond, J.T. & Hayward, B.W. (1979). <i>The Maori history and legends of the Waitakere Ranges</i> . Akld, N.Z.: Lodestar.	
		Karekare Valley Scenic	Karekare Road	Karekare	One meaning of Karekare is surf. Also known as Waikarekare. Kare Kare Road - Waikumete: Noted by Waitemata County on 27 May 1954.	Auckland Libraries. <i>Waitakere street names</i> . Retrieved 2018, from https://www.aucklandlibraries.govt.nz/Pages/waitakere-street-names.aspx Diamond, J.T. & Hayward, B.W. (1979). <i>The Maori history and legends of the Waitakere Ranges</i> . Akld, N.Z.: Lodestar.	
		Kauri Plant Reserve	West Coast Road	Oratia			
		Kauri Reserve	West Coast Road	Oratia			
Ōkaurirahi	see Ceramco park	Kaurilands Domain	Atkinson Road	Titirangi	All areas of land comprising Ceramco Park and Kaurilands Domain were vested with Council between 1958 and 1984. Whilst the Reserve Act did not provide for domains, Council retained the name of Kaurilands Domain to protect the historical identity of the reserve.	Waitakere City Council. (2000). <i>Ceramco Park and Kaurilands Domain reserve management plan</i> . Auckland, N.Z.: Waitakere City Council.	
		Kaurimu Park	Wirihana Road	Titirangi			
		Kaurimu Stream Reserve	West Coast Road	Glen Eden	Possibly a compromise of kauri and rimu, or derived from 'kau,' to float and 'rimu,' a log - a floating log.	Davenport, J. C. (1990). <i>Street names of Auckland: their story</i> . Akld, N.Z: Hodder & Stoughton.	
		Kaurimu Stream Reserve - Central	Shaw Road	Oratia	Possibly a combination of kauri and rimu; or derived from 'kau,' to float and 'rimu,' a log - a floating log.	Davenport, J. C. (1990). <i>Street names of Auckland: their story</i> . Akld, N.Z: Hodder & Stoughton.	
		Kaurimu Stream Reserve - South	Shaw Road	Oratia			
		Kawa Glade	Kawaka Street	Titirangi			
		Kawaka Reserve	Atkinson Road	Titirangi	Kawaka Road - Titirangi: Named between 1961 and April 1975. Kawaka - the same as kaikawaka, which is known as the New Zealand cedar. Kawaka is the fragrant or dropping cedar, <i>Libocedrus plumosa</i> .	Auckland Libraries. <i>Auckland street names guide: Waitakere street names</i> . Retrieved from https://www.aucklandlibraries.govt.nz/Pages/waitakere-street-names.aspx Davenport, J. C. (1990). <i>Street names of Auckland: their story</i> . Akld, N.Z: Hodder & Stoughton.	

Māori Name	Meaning of Māori Name	Existing Name	Street	Locality	Brief origin of existing name	Brief source of existing name	Detailed story of existing name
		341-347 Henderson Valley Road	Henderson Valley Road	Henderson Valley			
Te Ara Huarewa	Meaning "the raised path". Over many generations the Waiwhauwhaupaku Stream valley was used as an inland walkway. Canoes would be left at the head of the Wai Huruuru Manawa (Huruuru Creek) tidal inlet and travellers would then walk inland to the pā above Swanson known as Pukearuhe, or further on via the northern Pukewhakataratara ridge to the Waitākere River valley and Te Henga.	Kay Road Bale Fill	Kay Rd	Swanson			The area of the Kay Road balefill, adjacent to Crows Park was originally in two titles. Grange owned the Kay Road side and McEntee the eastern side. Grange clear felled his property in the 1930s except for a stand of large Kauri located by the corner of Kay Road and McEntee Road. Only two of these Kauri remain today. The land south and below the balefill site was owned by Nicol's and this is where the pine plantings in the area originated. Source: Waitakere City Council. (2001). Crows Park reserve management plan. Auckland, N.Z.: Waitakere City Council.
		Kellys Bridge Esplanade	Kellys Road	Oratia	Kellys Road - Waitākere: Kelly's Road noted by Waitemata County on 17 February 1928. Named after an early settler in the area, Andrew Kelly (1818-1907) who bought 45 hectares of land in the area, which he cleared and where he set up a farm.	Auckland Libraries. <i>Auckland street names guide: Waitakere street names</i> . Retrieved from https://www.aucklandlibraries.govt.nz/Pages/waitakere-street-names.aspx Davenport, J. C. (1990). <i>Street names of Auckland: their story</i> . Akld, N.Z: Hodder & Stoughton.	
		Kitewaho Plant Reserve - 1	Kitewaho Road	Swanson	Kitewaho Road - Waitākere: Named before 1961. 'Kite,' means to see, or a view, and 'wao,' forest.	Auckland Libraries. <i>Auckland street names guide: Waitakere street names</i> . Retrieved from https://www.aucklandlibraries.govt.nz/Pages/waitakere-street-names.aspx Davenport, J. C. (1990). <i>Street names of Auckland: their story</i> . Akld, N.Z: Hodder & Stoughton.	
		Kitewaho Plant Reserve - 2	Kitewaho Road	Swanson	Kitewaho Road - Waitākere: Named before 1961. 'Kite,' means to see, or a view, and 'wao,' forest.	Auckland Libraries. <i>Auckland street names guide: Waitakere street names</i> . Retrieved from https://www.aucklandlibraries.govt.nz/Pages/waitakere-street-names.aspx Davenport, J. C. (1990). <i>Street names of Auckland: their story</i> . Akld, N.Z: Hodder & Stoughton.	
		Kitewaho Reserve	Kitewaho Road	Swanson	Kitewaho Road - Waitākere: Named before 1961. 'Kite,' means to see, or a view, and 'wao,' forest.	Auckland Libraries. <i>Auckland street names guide: Waitakere street names</i> . Retrieved from https://www.aucklandlibraries.govt.nz/Pages/waitakere-street-names.aspx Davenport, J. C. (1990). <i>Street names of Auckland: their story</i> . Akld, N.Z: Hodder & Stoughton.	
		Kohu Plantation Reserve	Kohu Road	Titirangi	Kohu Road - Titirangi: Formerly View Road to 29 August 1985.	Auckland Libraries. <i>Auckland street names guide: Waitakere street names</i> . Retrieved July 23, 2018, from https://www.aucklandlibraries.govt.nz/Pages/waitakere-street-names.aspx	
		Konini Pt Reserve - 1	Konini Road	Titirangi	Konini Road - Titirangi: Noted by Waitemata County on 17 April 1920 as being under construction on the Kaurilands estate. Name formally suggested 10 July 1934. Konini - The name of the berry from the native kotukutuku tree.	Auckland Libraries. <i>Auckland street names guide: Waitakere street names</i> . Retrieved from https://www.aucklandlibraries.govt.nz/Pages/waitakere-street-names.aspx Davenport, J. C. (1990). <i>Street names of Auckland: their story</i> . Akld, N.Z: Hodder & Stoughton.	
		Konini Pt Reserve - 2	Konini Road	Titirangi	Konini Road - Titirangi: Noted by Waitemata County on 17 April 1920 as being under construction on the Kaurilands estate. Name formally suggested 10 July 1934. Konini - The name of the berry from the native kotukutuku tree.	Auckland Libraries. <i>Auckland street names guide: Waitakere street names</i> . Retrieved from https://www.aucklandlibraries.govt.nz/Pages/waitakere-street-names.aspx Davenport, J. C. (1990). <i>Street names of Auckland: their story</i> . Akld, N.Z: Hodder & Stoughton.	
		Korihi Drive Drainage Reserve	Korihi Drive	Swanson			
		Kotinga Reserve	Kotinga Avenue	Glen Eden	Kotinga - the word for a boundary line.	Davenport, J. C. (1990). <i>Street names of Auckland: their story</i> . Akld, N.Z: Hodder & Stoughton.	
		Kowhai Reserve	Withers Road	Glen Eden			

Māori Name	Meaning of Māori Name	Existing Name	Street	Locality	Brief origin of existing name	Brief source of existing name	Detailed story of existing name
		341-347 Henderson Valley Road	Henderson Valley Road	Henderson Valley			
		Laingholm Drive Esplanade	Laingholm Drive	Laingholm	The area of Laingholm was traditionally known as Waikumete - a traditional Kawerau kainga. Laingholm (previously Roseneath) was named after George & John Laing who had farms in this district until 1845. Laingholm Drive - Named before 1961.	Auckland Libraries. <i>Waitakere street names</i> . https://www.aucklandlibraries.govt.nz/Pages/waitakere-street-names.aspx Davenport, J. C. (1990). <i>Street names of Auckland</i> . Waitakere City Council. (2001). <i>Manukau Harbour foreshore reserves management plan</i> .	Laingholm was a traditional Kawerau kainga. The area was known as Waikumete and the pa is known as Te Tokoroa and not Te Tokoroa as is generally accepted. The Kawerau people of this pa were acknowledged for their traditional canoe building expertise and within the inlet of Waikumete there is a place called Nga Maramara Totara or the many Totara chips. This area would be one of the last places where large traditional waka were built in the Auckland region. The name Laingholm was after George and John Laing who had farms in this district until 1845. The previous name for the area being Roseneath. Sources: Waitakere City Council. (2001). <i>Manukau Harbour foreshore reserves management plan</i> . Auckland, N.Z.: Waitakere City Council. Davenport, J. C. (1990). <i>Street names of Auckland: their story</i> . Akld, N.Z: Hodder & Stoughton.
		Laingholm Hall Reserve	Victory Road	Laingholm	Laingholm was a traditional Kawerau kainga. The area was known as Waikumete and the pa is known as Te Tokoroa. The name Laingholm was after George and John Laing who had farms in this district until 1845. The previous name for the area being Roseneath.	Waitakere City Council. (2001). <i>Manukau Harbour foreshore reserves management plan</i> . Auckland, N.Z.: Waitakere City Council. Davenport, J. C. (1990). <i>Street names of Auckland: their story</i> . Akld, N.Z: Hodder & Stoughton.	Laingholm was a traditional Kawerau kainga. The area was known as Waikumete and the pa is known as Te Tokoroa and not Te Tokoroa as is generally accepted. The Kawerau people of this pa were acknowledged for their traditional canoe building expertise and within the inlet of Waikumete there is a place called Nga Maramara Totara or the many Totara chips. This area would be one of the last places where large traditional waka were built in the Auckland region. The name Laingholm was after George and John Laing who had farms in this district until 1845. The previous name for the area being Roseneath. Sources: Waitakere City Council. (2001). <i>Manukau Harbour foreshore reserves management plan</i> . Auckland, N.Z.: Waitakere City Council. Davenport, J. C. (1990). <i>Street names of Auckland: their story</i> . Akld, N.Z: Hodder & Stoughton.
Ruatuna	Ruatuna is the old name for Laingholm Beach, referring to the healthy tuna (eel) in the contributing streams.	Laingholm Reserve	Western Road	Laingholm	Laingholm was a traditional Kawerau kainga. The area was known as Waikumete and the pa is known as Te Tokoroa. The name Laingholm was after George and John Laing who had farms in this district until 1845. The previous name for the area being Roseneath.	Waitakere City Council. (2001). <i>Manukau Harbour foreshore reserves management plan</i> . Auckland, N.Z.: Waitakere City Council. Davenport, J. C. (1990). <i>Street names of Auckland: their story</i> . Akld, N.Z: Hodder & Stoughton.	Laingholm was a traditional Kawerau kainga. The area was known as Waikumete and the pa is known as Te Tokoroa and not Te Tokoroa as is generally accepted. The Kawerau people of this pa were acknowledged for their traditional canoe building expertise and within the inlet of Waikumete there is a place called Nga Maramara Totara or the many Totara chips. This area would be one of the last places where large traditional waka were built in the Auckland region. The name Laingholm was after George and John Laing who had farms in this district until 1845. The previous name for the area being Roseneath. Sources: Waitakere City Council. (2001). <i>Manukau Harbour foreshore reserves management plan</i> . Auckland, N.Z.: Waitakere City Council. Davenport, J. C. (1990). <i>Street names of Auckland: their story</i> . Akld, N.Z: Hodder & Stoughton.

Māori Name	Meaning of Māori Name	Existing Name	Street	Locality	Brief origin of existing name	Brief source of existing name	Detailed story of existing name
		341-347 Henderson Valley Road	Henderson Valley Road	Henderson Valley			
Waihangā	Waihangā means to make, build, create or construct. This name links to historic activity of waka and pā-building in the area.	Laingholm Scenic Reserve	Sandys Parade	Laingholm	Laingholm was a traditional Kawerau kainga. The area was known as Waikumete and the pa is known as Te Tokaroa. The name Laingholm was after George and John Laing who had farms in this district until 1845. The previous name for the area being Roseneath.	Waitakere City Council. (2001). <i>Manukau Harbour foreshore reserves management plan</i> . Auckland, N.Z.: Waitakere City Council. Davenport, J. C. (1990). <i>Street names of Auckland: their story</i> . Akld, N.Z: Hodder & Stoughton.	Laingholm was a traditional Kawerau kainga. The area was known as Waikumete and the pa is known as Te Tokaroa and not Te Tokoroa as is generally accepted. The Kawerau people of this pa were acknowledged for their traditional canoe building expertise and within the inlet of Waikumete there is a place called Nga Maramara Totara or the many Totara chips. This area would be one of the last places where large traditional waka were built in the Auckland region. The name Laingholm was after George and John Laing who had farms in this district until 1845. The previous name for the area being Roseneath. Sources: Waitakere City Council. (2001). <i>Manukau Harbour foreshore reserves management plan</i> . Auckland, N.Z.: Waitakere City Council. Davenport, J. C. (1990). <i>Street names of Auckland: their story</i> . Akld, N.Z: Hodder & Stoughton.
		Laings Esplanade	Laingholm Drive	Laingholm	Laingholm was a traditional Kawerau kainga. The area was known as Waikumete and the pa is known as Te Tokaroa. The name Laingholm was after George and John Laing who had farms in this district until 1845. The previous name for the area being Roseneath.	Waitakere City Council. (2001). <i>Manukau Harbour foreshore reserves management plan</i> . Auckland, N.Z.: Waitakere City Council. Davenport, J. C. (1990). <i>Street names of Auckland: their story</i> . Akld, N.Z: Hodder & Stoughton.	Laingholm was a traditional Kawerau kainga. The area was known as Waikumete and the pa is known as Te Tokaroa and not Te Tokoroa as is generally accepted. The Kawerau people of this pa were acknowledged for their traditional canoe building expertise and within the inlet of Waikumete there is a place called Nga Maramara Totara or the many Totara chips. This area would be one of the last places where large traditional waka were built in the Auckland region. The name Laingholm was after George and John Laing who had farms in this district until 1845. The previous name for the area being Roseneath. Sources: Waitakere City Council. (2001). <i>Manukau Harbour foreshore reserves management plan</i> . Auckland, N.Z.: Waitakere City Council. Davenport, J. C. (1990). <i>Street names of Auckland: their story</i> . Akld, N.Z: Hodder & Stoughton.
		Lake Wainamu Scenic Reserve	Bethells Road	Bethells			
Waituna	This reserve backs on to the Waituna stream, the name of which translates to the 'waters of the tuna (eel)'.	Landing Road Reserve	Huia Road	Titirangi	Landing Road - Titirangi: Named before 1943.	Auckland Libraries. <i>Auckland street names guide: Waitakere street names</i> . Retrieved July 23, 2018, from https://www.aucklandlibraries.govt.nz/Pages/waitakere-street-names.aspx	
Kaupae	Meaning stairs or staircase, Kaupae has a direct reference to the estimated 200 steps a person needs to walk up or down to get to the adjoining street.	Landing Road Walkway	Landing Road	Titirangi	Landing Road - Titirangi: Named before 1943.	Auckland Libraries. <i>Auckland street names guide: Waitakere street names</i> . Retrieved July 23, 2018, from https://www.aucklandlibraries.govt.nz/Pages/waitakere-street-names.aspx	
		Les Waygood Park	North Piha Road	Piha	Les Waygood was an early landowner in Piha, who subdivided his land in the 1950s. He donated the land for the North Piha Lifeguard Service club house.	United North Piha Lifeguard Service. (n.d.). <i>About United North Piha</i> . Retrieved 7 August 2018 from http://www.unitednorthpiha.org.nz/index.php/about Coney, Sandra. (n.d.). <i>Bach settlement</i> . Retrieved 2018 from http://www.piha.co.nz/bach-settlement/	
Kikitara	Kihikihi is the name for a cicada and kikitara is an ingoa (name) that is used to describe the chorus of the cicada, that resounds in this reserve. A similar sound is made by the tamāriki (children), laughing and singing in the playcentre located on this park. The species most of us are familiar with is the chorus cicada, <i>Amphipsalta zelandica</i> which reach their deafening peak in February. Children, such as those at the playcentre here, love looking for their cast off shells.	Levy Reserve	Levy Road	Glen Eden	Levy Road - later became Woodlands and from February 1969 Woodglen Road. To preserve the link to the name of an early settler Bellevue was renamed Levy Road on the same date. William Levy, established an orchard and dairy farm in the area in 1880s.	Auckland Libraries. <i>Auckland street names guide: Waitakere street names</i> . Retrieved from https://www.aucklandlibraries.govt.nz/Pages/waitakere-street-names.aspx Davenport, J. C. (1990). <i>Street names of Auckland: their story</i> . Akld, N.Z: Hodder & Stoughton.	Levy Road - Glen Eden: It later became Woodlands and from February 1969 Woodglen Road. To preserve the link to the name of an early settler Bellevue was renamed Levy Road on the same date. William Levy, established an orchard and dairy farm in the Glen Eden area in 1880s. He was also the local bandmaster for a time. Sir Bruce Levy, the first director of the Grasslands Division of the Department of Agriculture was his son.
		Library Lane/Glen Eden Walkway	West Coast Road	Glen Eden			
		Little Huia Beach	Huia Road	Huia	Traditionally known by Kawerau as Kaitieke this area had a small hilltop pa called Te Komoki	Waitakere City Council. (2001). <i>Manukau Harbour foreshore reserves management plan</i> . Auckland, N.Z.: Waitakere City Council.	

Māori Name	Meaning of Māori Name	Existing Name	Street	Locality	Brief origin of existing name	Brief source of existing name	Detailed story of existing name
		341-347 Henderson Valley Road	Henderson Valley Road	Henderson Valley			
Waikūmete	The coastal area extending west from Motukaraka (Karakara Park, Green Bay) to Waikūmete (Little Muddy Creek) is known collectively as Tītirangi. Along these shores are places of historical importance to Te Kawerau ā Maki including: Te Kai ō Poutūkeka, Ōtītore, Ōkewa, and Paturoa. The importance of Waikūmete and its catchment as a canoe building area until the 1860s, is reflected in the place names Te Tō-o-Parahiku, 'the dragging place of the semi-finished canoe hulls', and Maramara Tōtara, 'tōtara wood chips'. This locality was protected by a fortified pā known as Te Tokaroa.	Little Muddy Creek	Laingholm Drive	Laingholm			
		Lone Kauri Glade	Lone Kauri Road	Karekare	Lone Kauri Road - Waikumete: Noted by Waitemata County on 27 May 1954.	Auckland Libraries. <i>Auckland street names guide: Waitakere street names</i> . Retrieved July 23, 2018, from https://www.aucklandlibraries.govt.nz/Pages/waitakere-street-names.aspx	
		Lone Kauri Reserve	Lone Kauri Road	Karekare	Lone Kauri Road - Waikumete: Noted by Waitemata County on 27 May 1954.	Auckland Libraries. <i>Auckland street names guide: Waitakere street names</i> . Retrieved July 23, 2018, from https://www.aucklandlibraries.govt.nz/Pages/waitakere-street-names.aspx	
		Lookout Reserve	Lookout Drive	Laingholm	Lookout Drive - Tītirangi: Named between 1961 and April 1975.	Auckland Libraries. <i>Auckland street names guide: Waitakere street names</i> . Retrieved July 23, 2018, from https://www.aucklandlibraries.govt.nz/Pages/waitakere-street-names.aspx	
Kuranga	Kuranga means schooling or education. This ingoa (name) connects with Frank Lopdell, the Education Superintendent who the reserve was previously named after.	Lopdell Plantation Reserve	South Tītirangi Road	Tītirangi			
		Maheo Plantation Reserve	Maheo Road	Tītirangi	Maheo Road - Tītirangi: Noted by Waitemata County on 27 May 1954. Maheo - a tree which is also known as 'whitey wood'.	Auckland Libraries. <i>Auckland street names guide: Waitakere street names</i> . Retrieved from https://www.aucklandlibraries.govt.nz/Pages/waitakere-street-names.aspx Davenport, J. C. (1990). <i>Street names of Auckland: their story</i> . Akld, N.Z: Hodder & Stoughton.	
		Maheo Walk	Maheo Road	Tītirangi	Maheo Road - Tītirangi: Noted by Waitemata County on 27 May 1954. Maheo - a tree which is also known as 'whitey wood'.	Auckland Libraries. <i>Auckland street names guide: Waitakere street names</i> . Retrieved from https://www.aucklandlibraries.govt.nz/Pages/waitakere-street-names.aspx Davenport, J. C. (1990). <i>Street names of Auckland: their story</i> . Akld, N.Z: Hodder & Stoughton.	
		Marama Plantation Reserve	Whatipu Road	Huia			
		Marine Parade Plantation Reser	Marine Parade South	Piha	Marine Parade - Piha: Named between 1961 and April 1975.	Auckland Libraries. <i>Auckland street names guide: Waitakere street names</i> . Retrieved July 23, 2018, from https://www.aucklandlibraries.govt.nz/Pages/waitakere-street-names.aspx	
Tautoru	Tautoru refers to the three stars of orion's belt that are visible from this area at night. This ingoa (name) continues the stargazing theme of the nearby parks and streets of Glen Eden.	Maywood Reserve	Maywood Crescent	Glen Eden			
		Mceldowney Reserve	Mceldowney Road	Tītirangi	McEldowney Road - Tītirangi: Named before 1943.	Auckland Libraries. <i>Auckland street names guide: Waitakere street names</i> . Retrieved July 23, 2018, from https://www.aucklandlibraries.govt.nz/Pages/waitakere-street-names.aspx	
Rangatū	Rangatū is a verb meaning to march or to advance in form. The name relates to many generations of Māori travellers who used the nearby Waiwhauwhaupaku stream valley as an inland walkway. Canoes would be left at the head of the Wai Huruuru Mānawa (Huruuru Creek) tidal inlet and travellers would then walk inland to the pā above Swanson known as Pukearuhe, or further on via the northern Pukewhakaratarata ridge to the Waitākere River valley and Te Henga. Rangatū also connects with the names of the soldiers that are remembered on streets around this park.	Mettam Drive (penihana working name)	Mettam drive	Swanson	No name adopted.		
		Miha Road Reserve	Okewa Road	Tītirangi			
Whetū	Tautoru refers to the three stars of orion's belt that are visible from this area at night. This ingoa (name) continues the stargazing theme of the nearby parks and streets of Glen Eden.	Milan Reserve	Milan Drive	Glen Eden			
		Minnehaha Reserve	Minnehaha Avenue	Tītirangi	Minnehaha Avenue - Tītirangi: Named before 1943.	Auckland Libraries. <i>Auckland street names guide: Waitakere street names</i> . Retrieved July 23, 2018, from https://www.aucklandlibraries.govt.nz/Pages/waitakere-street-names.aspx	

Māori Name	Meaning of Māori Name	Existing Name	Street	Locality	Brief origin of existing name	Brief source of existing name	Detailed story of existing name
		341-347 Henderson Valley Road	Henderson Valley Road	Henderson Valley			
		Mokihi Reserve - Provisional	Henderson Valley Road	Henderson Valley			
		Momotu Stream Reserve	Birdwood Road	Massey			
		Mountain Reserve - Henderson Valley	Mountain Road	Henderson Valley	Mountain Road - Waitākere: Noted by Waitemata County on 18 December 1925, 17 February 1928 and 27 May 1954.	Auckland Libraries. <i>Auckland street names guide: Waitakere street names</i> . Retrieved July 23, 2018, from https://www.aucklandlibraries.govt.nz/Pages/waitakere-street-names.aspx	
		Mountain Road Esplanade Reserv	Mountain Road	Henderson Valley	Mountain Road - Waitākere: Noted by Waitemata County on 18 December 1925, 17 February 1928 and 27 May 1954.	Auckland Libraries. <i>Auckland street names guide: Waitakere street names</i> . Retrieved July 23, 2018, from https://www.aucklandlibraries.govt.nz/Pages/waitakere-street-names.aspx	
		Mt Atkinson Park	Kohu Road	Titirangi			
		Napuka Road Plantation	Napuka Road	Henderson Valley	Napuka - One of New Zealand's hebes - <i>hebe speciosa</i> . Now a very rare plant in the wild, it is widely cultivated by gardeners.	Davenport, J. C. (1990). <i>Street names of Auckland: their story</i> . Akld, N.Z: Hodder & Stoughton.	
Tairoa	This reserve is located near Oratia which means "the long, lingering sun". Tairoa is translated as lingering or spending time. This name refers to the time that will be spent in the area by the community of Oratia with the bowling club, church and school near by.	Nicolas Reserve	West Coast Road	Oratia	Nicolas Avenue - Waitākere: Named before 1961. Nicolas - An old family in this area. Land was granted in their name as early as 1882.	Auckland Libraries. <i>Auckland street names guide: Waitakere street names</i> . Retrieved from https://www.aucklandlibraries.govt.nz/Pages/waitakere-street-names.aspx Davenport, J. C. (1990). <i>Street names of Auckland: their story</i> . Akld, N.Z: Hodder & Stoughton.	
Kohunui	Kohunui is an ancestral name for this area meaning 'expansive mist'. The entire coastal environment which includes the adjoining Waitetura (North Piha Beach), was well known as an in-shore fishery where large quantities of tāmure (snapper), pākirikiri (rock cod) and other rocky shore shellfish species were caught and collected.	North Piha Esplanade	North Piha Road	Piha	The name Piha comes from 'Te Piha' which was the name given to Lion Rock and the beach by Te Kawerau a Maki. It means the ripple of waves at the bow of a canoe.	Waitakere City Council. (1999). <i>Piha Reserves Management Plan</i> . Waitakere Auckland, N.Z.: Waitakere City Council.	
Waitetura	Waitetura - the wide and expansive bay. This was the site of a battle in the 17th century in which Maki and his people were victorious.	North Piha Strand	Marine Parade North	Piha	The name Piha comes from 'Te Piha' which was the name given to Lion Rock and the beach by Te Kawerau a Maki. It means the ripple of waves at the bow of a canoe.	Waitakere City Council. (1999). <i>Piha Reserves Management Plan</i> . Waitakere Auckland, N.Z.: Waitakere City Council.	
		Odlin Corner	Lone Kauri Road	Karekare			
		Okewa Reserve	Okewa Road	Titirangi	From 'o,' belonging to, and 'kewa,' an ancient Maori name. Kewa was the brother of Turi, the commander of the Aotea canoe. Te Rangi Hingahinga Tahī is the traditional Kawerau name of Okewa Point after a battle that took place there.	Davenport, J. C. (1990). <i>Street names of Auckland: their story</i> . Akld, N.Z: Hodder & Stoughton. Waitakere City Council. (2001). <i>Manukau Harbour foreshore reserves management plan</i> . Auckland, N.Z.: Waitakere City Council.	The importance of this area for Kawerau stems from the inter-tribal battles of the 18th Century. During the mid 1700's, there were a series of battles between Kawerau, Waiohua and Te Taou peoples. The battles were fought in the valleys and ridges of this area and there was one such battle called Paturoa. At the end of this particular battle, Waiohua survivors made their way to the foreshores of the now Paturoa Reserve and began their journey back up the Manukau Harbour. However, as they paddled their canoes past Okewa Point, they were taken captive there and killed. The name of this particular incident is called Te Rangi Hingahinga Tahī. This is the traditional Kawerau name of Okewa Point. It is well known by Kawerau that Te Rangi Hingahinga Tahī is an area of particular tapu. During the beginning of last century, many Kawerau people were still retrieving koiwi remains from this area. The remains were re-buried at a place nearby called Pikaroro. Waitakere City Council. (2001). <i>Manukau Harbour foreshore reserves management plan</i> . Auckland, N.Z.: Waitakere City Council.

Māori Name	Meaning of Māori Name	Existing Name	Street	Locality	Brief origin of existing name	Brief source of existing name	Detailed story of existing name
		341-347 Henderson Valley Road	Henderson Valley Road	Henderson Valley			
		Okewa Reserve & Beach	Aydon Road	Titirangi	From 'o,' belonging to, and 'kewa,' an ancient Maori name. Kewa was the brother of Turi, the commander of the Aotea canoe. Te Rangi Hingahinga Tahī is the traditional Kawerau name of Okewa Point after a battle that took place there.	Davenport, J. C. (1990). <i>Street names of Auckland: their story</i> . Akld, N.Z: Hodder & Stoughton. Waitakere City Council. (2001). <i>Manukau Harbour foreshore reserves management plan</i> . Auckland, N.Z.: Waitakere City Council.	The importance of this area for Kawerau stems from the inter-tribal battles of the 18th Century. During the mid 1700's, there were a series of battles between Kawerau, Waiohūa and Te Taou peoples. The battles were fought in the valleys and ridges of this area and there was one such battle called Paturoa. At the end of this particular battle, Waiohūa survivors made their way to the foreshores of the now Paturoa Reserve and began their journey back up the Manukau Harbour. However, as they paddled their canoes past Okewa Point, they were taken captive there and killed. The name of this particular incident is called Te Rangi Hingahinga Tahī. This is the traditional Kawerau name of Okewa Point. It is well known by Kawerau that Te Rangi Hingahinga Tahī is an area of particular tapu. During the beginning of last century, many Kawerau people were still retrieving kōiwi remains from this area. The remains were re-buried at a place nearby called Pikaroro. Waitakere City Council. (2001). <i>Manukau Harbour foreshore reserves management plan</i> . Auckland, N.Z.: Waitakere City Council.
		Olive Grove	Verdale Circle	Glen Eden			
Mauku	Mauku are small filmy native ferns but it is also an old name for dwarf cabbage trees. Local iwi Te Kawerau ā Maki use the name mauku for the cabbage tree (as in the suburb of Waimauku). This ingoa (name) refers to the many cabbage trees that can be found in this area.	Onedin Green	Onedin Place	Titirangi	Onedin Place - Titirangi: Named between 1961 and April 1975. A subdivision where the name of a popular television series of the day about a shipping line was selected for a street name.	Auckland Libraries. <i>Auckland street names guide: Waitakere street names</i> . Retrieved from https://www.aucklandlibraries.govt.nz/Pages/waitakere-street-names.aspx Davenport, J. C. (1990). <i>Street names of Auckland: their story</i> . Akld, N.Z: Hodder & Stoughton.	
		Opanuku Esplanade	Henderson Valley Road	Henderson Valley	A much older name for Henderson Valley is Opanuku (belonging to Panuku - a famous ancestor of Te Kawerau a Maki) now reflected in the name of the stream that has formed the valley, and the watershed that feeds it.	Waitakere City Council. (2010). Evaluation of the proposed boundary for the Henderson Valley/Opanuku local area plan. Auckland, N.Z: Waitakere City Council.	
		Opanuku Marginal Strip Reserve	Henderson Valley Road	Henderson Valley	A much older name for Henderson Valley is Opanuku (belonging to Panuku - a famous ancestor of Te Kawerau a Maki) now reflected in the name of the stream that has formed the valley, and the watershed that feeds it.	Waitakere City Council. (2010). Evaluation of the proposed boundary for the Henderson Valley/Opanuku local area plan. Auckland, N.Z: Waitakere City Council.	
		Opanuku Road Bush Reserve	Opanuku Road	Henderson Valley	Opanuku Road - Dreamlands/Waitākere: Noted by Waitemata County on 17 February 1928, and 27 May 1954. Opanuku is also a much older name for Henderson Valley (belonging to Panuku - a famous ancestor of Te Kawerau a Maki).	Auckland Libraries. Waitakere street names. Retrieved 2018, from https://www.aucklandlibraries.govt.nz/Pages/waitakere-street-names.aspx Waitakere City Council. (2010). Evaluation of the proposed boundary for the Henderson Valley/Opanuku local area plan	
		Oponu Reserve	Oponu Road	Titirangi	The name Oponu has been shortened and should actually read as Te Kai o Poutukeka. When the Tainui canoe passed through the Manukau Harbour, Poutukeka as a rangatira insisted the canoe stop in this area for them to eat.	Waitakere City Council. (2001). <i>Manukau Harbour foreshore reserves management plan</i> . Auckland, N.Z.: Waitakere City Council.	
		Oratia Drive Accessway	Oratia Drive	Glen Eden			
		Oratia Esplanade	Newham Place	Henderson			
		Oratia Hall Reserve	West Coast Road	Oratia			
		Osman Street Common	Osman Street	Glen Eden	Linked in this area with Captain Robert Falcon Scott's second and last Antarctic expedition. Osman was one of the 33 sledging dogs collected in Russia and shipped to Lyttelton.	Davenport, J. C. (1990). <i>Street names of Auckland: their story</i> . Akld, N.Z: Hodder & Stoughton.	
		Otitori Reserve	Otitori Bay Road	Titirangi	Otitori Bay Road - Titirangi: Noted by Waitemata County on 17 February 1928. The name of the bay, often called French Bay.	Auckland Libraries. <i>Auckland street names guide: Waitakere street names</i> . Retrieved from https://www.aucklandlibraries.govt.nz/Pages/waitakere-street-names.aspx Davenport, J. C. (1990). <i>Street names of Auckland: their story</i> . Akld, N.Z: Hodder & Stoughton.	

Māori Name	Meaning of Māori Name	Existing Name	Street	Locality	Brief origin of existing name	Brief source of existing name	Detailed story of existing name
		341-347 Henderson Valley Road	Henderson Valley Road	Henderson Valley			
		Otitori Scenic Reserve	Otitori Bay Road	Titirangi	Otitori Bay Road - Noted by Waitemata County on 17 February 1928. The name of the bay, often called French Bay.	Auckland Libraries. <i>Auckland street names guide: Waitakere street names</i> . Retrieved from https://www.aucklandlibraries.govt.nz/Pages/waitakere-street-names.aspx Davenport, J. C. (1990). <i>Street names of Auckland: their story</i> . Akld, N.Z: Hodder & Stoughton.	
		Owen's Green	Huia Road	Laingholm			
		Pareira Esplanade	Mountain Road	Henderson Valley			
		Pareira Reserve	Mountain Road	Henderson Valley			
		Parks - Waitakere Ranges	Henderson Valley Road	Henderson			
		Parrs Park	West Coast Road	Glen Eden	The Parr family were one of the earliest European families to settle in the area, and the nursery that they established in 1854 is now Parrs Park.	Waitakere City Council. (2000). <i>Parr's Park (and Sherrybrooke Esplanade) Reserve Management Plan</i> . Waitakere Auckland, N.Z.: Waitakere City Council.	The Parr family were one of the earliest European families to settle in the area, and the nursery that they established in 1854 is now Parrs Park. The original Parrs, Thomas and Jane Elizabeth, arrived in New Zealand in 1843 with their four children, Edward John, Thomas, Jane and John. The nursery business was continued by various family members until 1910. Parrs Park was formed from land acquired by Waitakere City Council since 1966, including purchases from Parr family members. Waitakere City Council. (2000). <i>Parr's Park (and Sherrybrooke Esplanade) Reserve Management Plan</i> . Waitakere Auckland, N.Z.: Waitakere City Council.
		Paturoa Esplanade	Paturoa Road	Titirangi	Paturoa Bay Road - Once Park Bay Road: Noted by Waitemata County 17 February 1928, later just Paturoa Road. Paturoa - the site of a large battle fought in 1750 between Wai-o-hua and Ngati Whatua. 'Pau' can mean to kill or strike, and 'roa' means many.	Auckland Libraries. <i>Auckland street names guide: Waitakere street names</i> . Retrieved from https://www.aucklandlibraries.govt.nz/Pages/waitakere-street-names.aspx Davenport, J. C. (1990). <i>Street names of Auckland: their story</i> . Akld, N.Z: Hodder & Stoughton.	
		Paturoa Way	Paturoa Road	Titirangi	Paturoa Bay Road - Once Park Bay Road: Noted by Waitemata County 17 February 1928, later just Paturoa Road. Paturoa - the site of a large battle fought in 1750 between Wai-o-hua and Ngati Whatua. 'Pau' can mean to kill or strike, and 'roa' means many.	Auckland Libraries. <i>Auckland street names guide: Waitakere street names</i> . Retrieved from https://www.aucklandlibraries.govt.nz/Pages/waitakere-street-names.aspx Davenport, J. C. (1990). <i>Street names of Auckland: their story</i> . Akld, N.Z: Hodder & Stoughton.	
		Pendrell Reserve	Pendrell Road	Piha	Pendrell Road - Named between 1961 and April 1975.	Auckland Libraries. <i>Auckland street names guide: Waitakere street names</i> . Retrieved July 23, 2018, from https://www.aucklandlibraries.govt.nz/Pages/waitakere-street-names.aspx	
		Piha Domain	Seaview Road	Piha	The name Piha comes from 'Te Piha' which was the name given to Lion Rock and the beach by Te Kawerau a Maki. It means the ripple of waves at the bow of a canoe.	Waitakere City Council. (1999). <i>Piha Reserves Management Plan</i> . Waitakere Auckland, N.Z.: Waitakere City Council.	
Waitetura	Waitetura - the wide and expansive bay. This was the site of a battle in the 17th century in which Maki and his people were victorious	Piha Esplanade Reserve	Marine Parade North	Piha	The name Piha comes from 'Te Piha' which was the name given to Lion Rock and the beach by Te Kawerau a Maki. It means the ripple of waves at the bow of a canoe.	Waitakere City Council. (1999). <i>Piha Reserves Management Plan</i> . Waitakere Auckland, N.Z.: Waitakere City Council.	
		Piha Road Edge Reserve	Piha Road	Piha	The name Piha comes from 'Te Piha' which was the name given to Lion Rock and the beach by Te Kawerau a Maki. It means the ripple of waves at the bow of a canoe.	Waitakere City Council. (1999). <i>Piha Reserves Management Plan</i> . Waitakere Auckland, N.Z.: Waitakere City Council.	
		Piha South Road Reserve	Marine Parade South	Piha	The name Piha comes from 'Te Piha' which was the name given to Lion Rock and the beach by Te Kawerau a Maki. It means the ripple of waves at the bow of a canoe.	Waitakere City Council. (1999). <i>Piha Reserves Management Plan</i> . Waitakere Auckland, N.Z.: Waitakere City Council.	
		Pleasant Reserve	Pleasant Road	Glen Eden	Pleasant Road - Titirangi: Noted by Waitemata County on 27 May 1925.	Auckland Libraries. <i>Auckland street names guide: Waitakere street names</i> . Retrieved July 23, 2018, from https://www.aucklandlibraries.govt.nz/Pages/waitakere-street-names.aspx	
		Prospect Park	Pisces Road	Glen Eden			
		Rahui Kahika Reserve	Godley Road	Titirangi			

Māori Name	Meaning of Māori Name	Existing Name	Street	Locality	Brief origin of existing name	Brief source of existing name	Detailed story of existing name
		341-347 Henderson Valley Road	Henderson Valley Road	Henderson Valley			
		Rarua Park	Rarua Terrace	Waiaatarua	Rarua Terrace - Waitākere: Named before 1961. 'Rarua' means a long day or the sun high in the sky.	Auckland Libraries. <i>Auckland street names guide: Waitakere street names</i> . Retrieved from https://www.aucklandlibraries.govt.nz/Pages/waitakere-street-names.aspx Davenport, J. C. (1990). <i>Street names of Auckland: their story</i> . Akld, N.Z: Hodder & Stoughton.	
		Rayner Road/Sylvan Glade Res	Sylvan Glade	Piha	Rayner Road - Waitākere: Named between 1961 and April 1975.	Auckland Libraries. <i>Auckland street names guide: Waitakere street names</i> . Retrieved July 23, 2018, from https://www.aucklandlibraries.govt.nz/Pages/waitakere-street-names.aspx	
		Rimu Esplanade	Rimu Road	Oratia	Rimu Road - Waitākere: Rimu Street noted by Waitemata County on 18 December 1925 and 17 February 1928. Named after the indigenous tree.	Auckland Libraries. <i>Auckland street names guide: Waitakere street names</i> . Retrieved July 23, 2018, from https://www.aucklandlibraries.govt.nz/Pages/waitakere-street-names.aspx	
		Robert Knox Memorial Park	Knox Road	Swanson	Knox Road - Lincoln: Noted by Waitemata County on 17 February 1928.	Auckland Libraries. <i>Auckland street names guide: Waitakere street names</i> . Retrieved July 23, 2018, from https://www.aucklandlibraries.govt.nz/Pages/waitakere-street-names.aspx	
		Ruru Reserve	West Coast Road	Oratia			
		Sandys Parade	Sandys Parade	Laingholm	Sandy used to live in a houseboat where the creek emerges at the beach. Sandys Parade - Titirangi: Named between 1961 and April 1975.	Auckland Libraries. <i>Waitakere street names</i> . Retrieved July 23, 2018, from https://www.aucklandlibraries.govt.nz/Pages/waitakere-street-names.aspx Macdonald, F. & Kerr, R. (Eds.). (2009). <i>West: the history of Waitakere</i> . Auckland, N.Z.: Random House NZ.	
		Scenic Drive North Plant	Scenic Drive North	Swanson	Scenic Drive - Titirangi: Originally from 21 January 1914 it was Exhibition Drive, named for the 1913 Industrial Exhibition. It then became the Waitakere Scenic Drive.	Auckland Libraries. <i>Auckland street names guide: Waitakere street names</i> . Retrieved July 23, 2018, from https://www.aucklandlibraries.govt.nz/Pages/waitakere-street-names.aspx	
		Scenic Drive Reserve	Scenic Drive	Titirangi	Scenic Drive - Titirangi: Originally from 21 January 1914 it was Exhibition Drive, named for the 1913 Industrial Exhibition. It then became the Waitakere Scenic Drive.	Auckland Libraries. <i>Auckland street names guide: Waitakere street names</i> . Retrieved July 23, 2018, from https://www.aucklandlibraries.govt.nz/Pages/waitakere-street-names.aspx	
		Seaview Road Plant Reserve - 1	Garden Road	Piha	Seaview Road - Piha: Named between 1961 and April 1975.	Auckland Libraries. <i>Auckland street names guide: Waitakere street names</i> . Retrieved July 23, 2018, from https://www.aucklandlibraries.govt.nz/Pages/waitakere-street-names.aspx	
		Seaview Road Plant Reserve - 2	Garden Road	Piha	Seaview Road - Piha: Named between 1961 and April 1975.	Auckland Libraries. <i>Auckland street names guide: Waitakere street names</i> . Retrieved July 23, 2018, from https://www.aucklandlibraries.govt.nz/Pages/waitakere-street-names.aspx	
		Seaview Walkway	Seaview Road	Piha	Seaview Road - Piha: Named between 1961 and April 1975.	Auckland Libraries. <i>Auckland street names guide: Waitakere street names</i> . Retrieved July 23, 2018, from https://www.aucklandlibraries.govt.nz/Pages/waitakere-street-names.aspx	
		Seibel Park	Seibel Road	Henderson Valley	Seibel Road - Waitākere: Named between 1961 and April 1975.	Auckland Libraries. <i>Auckland street names guide: Waitakere street names</i> . Retrieved July 23, 2018, from https://www.aucklandlibraries.govt.nz/Pages/waitakere-street-names.aspx	
		Seibel Scenic Reserve	Seibel Road	Henderson Valley	Seibel Road - Waitākere: Named between 1961 and April 1975.	Auckland Libraries. <i>Auckland street names guide: Waitakere street names</i> . Retrieved July 23, 2018, from https://www.aucklandlibraries.govt.nz/Pages/waitakere-street-names.aspx	
Miharo	Miharo means to wonder at , or admire. This ingoa (name) refers to the clear view you have from this park to admire the ranges of Te Wao nui ā Tiriwa (Waitākere Ranges). There are two seats strategically placed for optimal viewing.	Shah Park	Shah Place	Glen Eden	Shah Place - Glen Eden: Named 6 June 2002, off Glengarry Road.	Auckland Libraries. <i>Auckland street names guide: Waitakere street names</i> . Retrieved July 23, 2018, from https://www.aucklandlibraries.govt.nz/Pages/waitakere-street-names.aspx	
		Shays Reserve	Wirihana Road	Titirangi			
		Sherrybrooke Esplanade	Sherrybrooke Place	Sunnyvale	Sherrybrooke Place - Te Atatū: Named between 1961 and April 1975.	Auckland Libraries. <i>Auckland street names guide: Waitakere street names</i> . Retrieved July 23, 2018, from https://www.aucklandlibraries.govt.nz/Pages/waitakere-street-names.aspx	

Māori Name	Meaning of Māori Name	Existing Name	Street	Locality	Brief origin of existing name	Brief source of existing name	Detailed story of existing name
		341-347 Henderson Valley Road	Henderson Valley Road	Henderson Valley			
		Singer Park	West Coast Road	Glen Eden	In 1972 the Glen Eden Soccer Club was formed. Concern was raised, especially by Mr Charlie Singer on behalf of the Club, at the lack of a home playing ground. In response, Council created this reserve and named it in honour of Mr Charlie Singer.	Glen Eden Borough Council. (1983). <i>Singer Park Final Management Plan</i> . Auckland, NZ: Glen Eden Borough Council.	In 1972 the Glen Eden Soccer Club was formed. Concern was raised, especially by Mr Charlie Singer on behalf of the Club, at the lack of a home playing ground. In response, Council moved that 3 hectares of wasteland fronting onto West Coast Road be developed as a reserve with facilities for soccer. It was also proposed that the western end of the reserve be cleared to provide for horse-riding or motor bike scrambling. In 1973 the Mayor (Mr Brian Berg) opened the new grounds, known as the West Coast Road Reserve. In 1975 the Council passed that the reserve be officially known as Singer Park, in honour of Mr Charlie Singer. Glen Eden Borough Council. (1983). <i>Singer Park Final Management Plan</i> . Auckland, NZ: Glen Eden Borough Council.
		Soldiers Memorial Reserve	Atkinson Road	Titirangi			
		South Piha Plantation Reserve	Piha Road	Piha	Piha Road - Named before 1961.	Auckland Libraries. <i>Auckland street names guide: Waitakere street names</i> . Retrieved July 23, 2018, from https://www.aucklandlibraries.govt.nz/Pages/waitakere-street-names.aspx	
		South Titirangi PI Reserve	South Titirangi Road	Titirangi	Previously School Rd, it became South Titirangi Road in 1962. Titirangi - name of a hebe. An old name that travelled with Maori from their homeland - 'titi,' the cry of birds, 'rangi,' the sky. In another interpretation, 'titirangi', the rim of heaven.	Auckland Libraries. <i>Auckland street names guide: Waitakere street names</i> . Retrieved from https://www.aucklandlibraries.govt.nz/Pages/waitakere-street-names.aspx Davenport, J. C. (1990). <i>Street names of Auckland: their story</i> . Akld, N.Z: Hodder & Stoughton.	
Nioreore	Nioreore are baby eels. Within this reserve there is a small stream which eventually connects to Waituna. The Waituna name relates to the tuna (eels) in this area. Nioreore is in reference to the baby eels that grow and travel to larger bodies of water.	South Titirangi Rec Reserve	South Titirangi Road	Titirangi	Previously School Rd, it became South Titirangi Road in 1962. Titirangi - name of a hebe. An old name that travelled with Maori from their homeland - 'titi,' the cry of birds, 'rangi,' the sky. In another interpretation, 'titirangi', the rim of heaven.	Auckland Libraries. <i>Auckland street names guide: Waitakere street names</i> . Retrieved from https://www.aucklandlibraries.govt.nz/Pages/waitakere-street-names.aspx Davenport, J. C. (1990). <i>Street names of Auckland: their story</i> . Akld, N.Z: Hodder & Stoughton.	
		South Titirangi Reserve	South Titirangi Road	Titirangi	Previously School Rd, it became South Titirangi Road in 1962. Titirangi - name of a hebe. An old name that travelled with Maori from their homeland - 'titi,' the cry of birds, 'rangi,' the sky. In another interpretation, 'titirangi', the rim of heaven.	Auckland Libraries. <i>Auckland street names guide: Waitakere street names</i> . Retrieved from https://www.aucklandlibraries.govt.nz/Pages/waitakere-street-names.aspx Davenport, J. C. (1990). <i>Street names of Auckland: their story</i> . Akld, N.Z: Hodder & Stoughton.	
Te Kakau	Te Kakau refers to "The Handle", which forms part of Tautoru (Orion's Belt), and is also the Māori name for the star Regulus. Te Kakau (Regulus) is the brightest star of the Constellation Leo and one of the brightest in the night sky. The name also connects to Leo Street, a nearby road reflecting the theme of zodiac names in this area .	Sunvue Park	Sunvue Road	Glen Eden	Sunvue Road - Waitakere: Named between 1961 and April 1975.	Auckland Libraries. <i>Auckland street names guide: Waitakere street names</i> . Retrieved July 23, 2018, from https://www.aucklandlibraries.govt.nz/Pages/waitakere-street-names.aspx	
		Swanson Oaks	Swanson Road	Swanson	Swanson is named after Scottish immigrant, William Swanson who purchased land in the valley in 1852, and was the first person to mill the Swanson Stream	Waitakere City Council. (2001). <i>Crows Park reserve management plan</i> . Auckland, N.Z.: Waitakere City Council.	William Swanson, emigrated to New Zealand, via Sydney, from Scotland in the 1840s and worked as a shipwright and cabinet maker. Upon returning from the California goldfields in 1852 he purchased land in the Swanson Valley, hence the naming of the valley. He was the first person to mill the Swanson Stream for kauri. Source: Waitakere City Council. (2001). <i>Crows Park reserve management plan</i> . Auckland, N.Z.: Waitakere City Council.

Māori Name	Meaning of Māori Name	Existing Name	Street	Locality	Brief origin of existing name	Brief source of existing name	Detailed story of existing name
		341-347 Henderson Valley Road	Henderson Valley Road	Henderson Valley			
Waiwhauwhaupaku	Waiwhauwhaupaku is the traditional name for the area of Swanson Stream and its margins. The area takes its name from the whauwhaupaku (five finger shrub), which once grew profusely here. The stream and its tributary Waimoko, flow from the eastern slopes of the sacred hill and tribal identifier Pukematekeo.	Swanson Scenic Reserve	Birdwood Road	Swanson	Swanson is named after Scottish immigrant, William Swanson who purchased land in the valley in 1852, and was the first person to mill the Swanson Stream	Waitakere City Council. (2001). <i>Crows Park reserve management plan</i> . Auckland, N.Z.: Waitakere City Council.	William Swanson, emigrated to New Zealand, via Sydney, from Scotland in the 1840s and worked as a shipwright and cabinet maker. Upon returning from the California goldfields in 1852 he purchased land in the Swanson Valley, hence the naming of the valley. He was the first person to mill the Swanson Stream for kauri. Source: Waitakere City Council. (2001). <i>Crows Park reserve management plan</i> . Auckland, N.Z.: Waitakere City Council.
		Swanson Station Park	Swanson Road	Swanson	Swanson is named after Scottish immigrant, William Swanson who purchased land in the valley in 1852, and was the first person to mill the Swanson Stream	Waitakere City Council. (2001). <i>Crows Park reserve management plan</i> . Auckland, N.Z.: Waitakere City Council.	William Swanson, emigrated to New Zealand, via Sydney, from Scotland in the 1840s and worked as a shipwright and cabinet maker. Upon returning from the California goldfields in 1852 he purchased land in the Swanson Valley, hence the naming of the valley. He was the first person to mill the Swanson Stream for kauri. Source: Waitakere City Council. (2001). <i>Crows Park reserve management plan</i> . Auckland, N.Z.: Waitakere City Council.
		Swanson Stream Esplanade Reser	Church Street	Swanson	Swanson is named after Scottish immigrant, William Swanson who purchased land in the valley in 1852, and was the first person to mill the Swanson Stream	Waitakere City Council. (2001). <i>Crows Park reserve management plan</i> . Auckland, N.Z.: Waitakere City Council.	William Swanson, emigrated to New Zealand, via Sydney, from Scotland in the 1840s and worked as a shipwright and cabinet maker. Upon returning from the California goldfields in 1852 he purchased land in the Swanson Valley, hence the naming of the valley. He was the first person to mill the Swanson Stream for kauri. Source: Waitakere City Council. (2001). <i>Crows Park reserve management plan</i> . Auckland, N.Z.: Waitakere City Council.
		Swanson Stream Reserve	Church Street	Swanson	Swanson is named after Scottish immigrant, William Swanson who purchased land in the valley in 1852, and was the first person to mill the Swanson Stream	Waitakere City Council. (2001). <i>Crows Park reserve management plan</i> . Auckland, N.Z.: Waitakere City Council.	William Swanson, emigrated to New Zealand, via Sydney, from Scotland in the 1840s and worked as a shipwright and cabinet maker. Upon returning from the California goldfields in 1852 he purchased land in the Swanson Valley, hence the naming of the valley. He was the first person to mill the Swanson Stream for kauri. Source: Waitakere City Council. (2001). <i>Crows Park reserve management plan</i> . Auckland, N.Z.: Waitakere City Council.
		Sylvan Glade Plantation Reserv	Sylvan Glade	Piha	Sylvan Avenue - Woodlands Park/Piha: Named before 1961.		
		Sylvan Reserve	Huia Road	Titirangi			
		Tainui Reserve	Huia Road	Titirangi	In the vicinity of Tainui Road which was named in conjunction with Ngaio and Taraire Roads in March 1949. The name of one of the great canoes that carried the first Maori to Aotearoa.	Auckland Libraries. <i>Auckland street names guide: Waitakere street names</i> . Retrieved from https://www.aucklandlibraries.govt.nz/Pages/waitakere-street-names.aspx Davenport, J. C. (1990). <i>Street names of Auckland: their story</i> . Akld, N.Z: Hodder & Stoughton.	
		Takahe Reserve	Takahe Road	Titirangi	Takahe Road - Titirangi: Named before 1961. Named after the flightless bird, <i>notornis mantelli</i> , thought to have been extinct until it was found in central southland in 1948 by Dr Orbell.	Auckland Libraries. <i>Auckland street names guide: Waitakere street names</i> . Retrieved from https://www.aucklandlibraries.govt.nz/Pages/waitakere-street-names.aspx Davenport, J. C. (1990). <i>Street names of Auckland: their story</i> . Akld, N.Z: Hodder & Stoughton.	

Māori Name	Meaning of Māori Name	Existing Name	Street	Locality	Brief origin of existing name	Brief source of existing name	Detailed story of existing name
		341-347 Henderson Valley Road	Henderson Valley Road	Henderson Valley			
		Takaranga Reserve	Staley Road	Parau	This area was traditionally named Nihotupu. Nihotupu was an ancestor of Kawerau a Maki during the time of the turehu people. He raided the gardens of Parekura and Panuku, and captured Parekura. She left a trail of feathers from her cloak and was rescued.	Waitakere City Council. (2001). <i>Manukau Harbour foreshore reserves management plan</i> . Auckland, N.Z.: Waitakere City Council.	This area was named Nihotupu by the Kawerau iwi. Nihotupu was an ancestor of Kawerau a Maki during the time of the turehu people. There is a Kawerau story about this ancestor particularly to do with his associations with one of the illustrious Kawerau women, Parekura. Parekura and her husband Panuku often lived in the Waitakere area, where they had a home at Wainamu. Here they maintained a cultivation known as Mara o Parekura or the garden of Parekura. To this garden came Nihotupu, one of the few remaining turehu people who occupied the forested interior of Te Wao nui a Tiriwa. He took a basket full of hue or goards, and on seeing Parekura inspecting her cultivations, he decided to capture her as well. Nihotupu dragged Parekura through the forest to his cavern home at Te Rua o Te Whenua. Parekura had the presence of mind to pluck feather down from her cloak made of toroa (albatross feathers) and to drop it on the pathway in order to guide her rescuers to Te Rua o Te Whenua where he killed Nihotupu and rescued Parekura. Waitakere City Council. (2001). <i>Manukau Harbour foreshore reserves management plan</i> . Auckland, N.Z.: Waitakere City Council.
		Tamariki Reserve	South Titirangi Road	Titirangi	Tamariki Avenue - Te Atatū: Named between 1961 and April 1975.	Auckland Libraries. <i>Auckland street names guide: Waitakere street names</i> . Retrieved July 23, 2018, from https://www.aucklandlibraries.govt.nz/Pages/waitakere-street-names.aspx	
		Tane Reserve	Tane Road	Laingholm	Tane Road - Titirangi: Noted by Waitemata County on 17 February 1928.	Auckland Libraries. <i>Auckland street names guide: Waitakere street names</i> . Retrieved July 23, 2018, from https://www.aucklandlibraries.govt.nz/Pages/waitakere-street-names.aspx	
		Tane Walk	Warner Park Avenue	Laingholm			
		Tanekaha Reserve	Otitori Bay Road	Titirangi	Adjoins Tanekaha Road which was noted by Waitemata County on 17 February 1928, it was also spelt as Tanakaha. The name of the native tree also known as the celery pine. 'Tanekaha,' can be translated as a strong man.	Auckland Libraries. <i>Auckland street names guide: Waitakere street names</i> . Retrieved from https://www.aucklandlibraries.govt.nz/Pages/waitakere-street-names.aspx Davenport, J. C. (1990). <i>Street names of Auckland: their story</i> . Akld, N.Z: Hodder & Stoughton.	
		Tangiwai Reserve	Huia Road	Titirangi	The naming of the Tangiwai Reserve was initiated by the Waima Ratepayers and Residents Association, to commemorate the use of the locality as a route for taking Maori dead to the burial caves above Woodlands Park.	Waitemata City Council. (1986). <i>Tangiwai Reserve Management Plan</i> . Auckland, NZ: Waitemata City Council.	
		Tasman View Esplanade	Tasman View Road	Bethells	Tasman View Road - Waitākere: Named between 1961 and April 1975.	Auckland Libraries. <i>Auckland street names guide: Waitakere street names</i> . Retrieved July 23, 2018, from https://www.aucklandlibraries.govt.nz/Pages/waitakere-street-names.aspx	
		Taumata Scenic Reserve (Provisional)	Bush Road	Waiatarua			
		Taumatarea Esplanade	Kauri Point Road	Laingholm			
		Tawari Reserve	Tawari Road	Henderson Valley	Tawari Road - Waitākere: Named between 1961 and April 1975	Auckland Libraries. <i>Auckland street names guide: Waitakere street names</i> . Retrieved July 23, 2018, from https://www.aucklandlibraries.govt.nz/Pages/waitakere-street-names.aspx	
		Tawini Road Bush Reserve	Tawini Road	Titirangi	Tawini Road - Titirangi: Noted by Waitemata County on 17 April 1930, as being under construction on the Kaurilands estate.	Auckland Libraries. <i>Auckland street names guide: Waitakere street names</i> . Retrieved July 23, 2018, from https://www.aucklandlibraries.govt.nz/Pages/waitakere-street-names.aspx	
		Te Henga Park	Bethells Road	Bethells	Te Henga: "Henga" refers to the high foredunes seen from out at sea, which resembled an upturned waka, or possibly the boards along the gunwale, fitted when travelling in rough seas. Another source states Te Henga, means 'the food for a work party'.	Diamond, J.T. & Hayward, B.W. (1979). <i>The Maori history and legends of the Waitakere Ranges</i> . Auckland, N.Z.: Lodestar Press.	

Māori Name	Meaning of Māori Name	Existing Name	Street	Locality	Brief origin of existing name	Brief source of existing name	Detailed story of existing name
		341-347 Henderson Valley Road	Henderson Valley Road	Henderson Valley			
		Tinopai Reserve	Tinopai Road	Titirangi	Tinopai Road - Titirangi: Noted by Waitemata County on 27 May 1954. Tinopai, translates as very good.	Auckland Libraries. Auckland street names guide: Waitakere street names. Retrieved from https://www.aucklandlibraries.govt.nz/Pages/waitakere-street-names.aspx Davenport, J. C. (1990). <i>Street names of Auckland: their story</i> . Akld, N.Z: Hodder & Stoughton.	
		Titirangi Beach Titirangi Bush Reserve	Park Road Titirangi Road	Titirangi	Formerly Porters Bush Rd & Brooklyn Rd, Titirangi Rd was noted by Waitemata County May 1925, Dec 1926. Titirangi - name of a hebe. An ancient Maori name, titi - the cry of birds, rangi - the sky. In another interpretation, titirangi - the rim of heaven	Auckland Libraries. <i>Auckland street names guide: Waitakere street names</i> . Retrieved from https://www.aucklandlibraries.govt.nz/Pages/waitakere-street-names.aspx Davenport, J. C. (1990). <i>Street names of Auckland: their story</i> . Akld, N.Z: Hodder & Stoughton.	
		Titirangi War Memorial	South Titirangi Road	Titirangi	Titirangi - name of a hebe. An old name that travelled with Maori from their homeland - 'titi,' the cry of birds, 'rangi,' the sky. In another interpretation, 'titirangi', the rim of heaven.	Davenport, J. C. (1990). <i>Street names of Auckland: their story</i> . Akld, N.Z: Hodder & Stoughton.	
		Titirangi Way Pl Reserve	Otitori Bay Road	Titirangi	Titirangi - name of a hebe. An old name that travelled with Maori from their homeland - 'titi,' the cry of birds, 'rangi,' the sky. In another interpretation, 'titirangi', the rim of heaven.	Davenport, J. C. (1990). <i>Street names of Auckland: their story</i> . Akld, N.Z: Hodder & Stoughton.	
		Township Park	Township Road	Waitakere	Township Road - Lincoln: Named between 1961 and April 1975.	Auckland Libraries. <i>Auckland street names guide: Waitakere street names</i> . Retrieved July 23, 2018, from https://www.aucklandlibraries.govt.nz/Pages/waitakere-street-names.aspx	
		Upland Glade	Upland Road	Huia	Upland Road - Titirangi: Named between 1961 and April 1975.	Auckland Libraries. <i>Auckland street names guide: Waitakere street names</i> . Retrieved July 23, 2018, from https://www.aucklandlibraries.govt.nz/Pages/waitakere-street-names.aspx	
		Vale Park	Grassmere Road	Henderson Valley	Vale Road - Waitakere: Named before 1961.	Auckland Libraries. <i>Auckland street names guide: Waitakere street names</i> . Retrieved July 23, 2018, from https://www.aucklandlibraries.govt.nz/Pages/waitakere-street-names.aspx	
		Victory Glade	Victory Road	Laingholm	Victory Road - Titirangi: Noted by Waitemata County on 17 February 1928.	Auckland Libraries. <i>Auckland street names guide: Waitakere street names</i> . Retrieved July 23, 2018, from https://www.aucklandlibraries.govt.nz/Pages/waitakere-street-names.aspx	
Kaupeka	Kaupeka can mean branch or stick connecting to the old name for the wider Glen Eden area Ōkaurirahi meaning 'the place of huge kauri'. In pre-Euopean times the upper part of this sub-catchment was distinguished by its mature kauri forest. Kaupeka is also a Māori term for the lunar month. Whitikaupeka is the name for Spica - the brightest star in the Virgo constellation which holds connections with street names in this area, commonly referred to today as the zodiac area.	Virgo Common	Virgo Place	Glen Eden	Virgo Place - several streets in the area have the names of signs of the zodiac or constellations.	Davenport, J. C. (1990). <i>Street names of Auckland: their story</i> . Akld, N.Z: Hodder & Stoughton.	
		Waiaatarua Reserve - Waiaatarua	West Coast Road	Oratia			
		Waikomiti Esplanade	Woodlands Park Road	Titirangi	Waikumete - meaning water or streams in a basin. The area was once known as Waikomiti, meaning a small muddy creek or a stink hole. The name was changed to something more appropriate in the 1870s when the city council apportioned an area as a cemetery.	Davenport, J. C. (1990). <i>Street names of Auckland: their story</i> . Akld, N.Z: Hodder & Stoughton.	
		Waikumete Esplanade Reserve - Prov	Savoy Road & Routley Drive	Glen Eden	The area Waikumete (meaning water or streams in a basin) was once known as Waikomiti, meaning a small muddy creek or a stink hole. The name was changed to something more appropriate in the 1870s when the city council apportioned an area as a cemetery.	Davenport, J. C. (1990). <i>Street names of Auckland: their story</i> . Akld, N.Z: Hodder & Stoughton.	

Māori Name	Meaning of Māori Name	Existing Name	Street	Locality	Brief origin of existing name	Brief source of existing name	Detailed story of existing name
		341-347 Henderson Valley Road	Henderson Valley Road	Henderson Valley			
		Waima Crescent Boylan Terrace	Boylan Road	Titirangi	Waima Crescent - Waima: Named before 1961. Boylan Road - Titirangi: Named before 1961. Waima - a name which means white water, reputed to have been brought from Hawaiki by the Maori.	Davenport, J. C. (1990). <i>Street names of Auckland: their story</i> . Akld, N.Z: Hodder & Stoughton.	
		Waima Reserve	Boylan Road	Titirangi	Waima Crescent - Waima: Named before 1961. Boylan Road - Titirangi: Named before 1961. Waima - a name which means white water, reputed to have been brought from Hawaiki by the Maori.	Davenport, J. C. (1990). <i>Street names of Auckland: their story</i> . Akld, N.Z: Hodder & Stoughton.	
Waitipu	This quarry is at the head of the stream known as Waitipu. So named because it rises quickly (tipu) after heavy rain. The valley below also carries this name due to its tendencies to flood easily.	Waitakere Quarry	Te Henga Road	Te Henga	Waitakere - this word means bubbling waters, or deep or cascading water. It was also the name of a Maori chief who was murdered here. His head was left on a rock between the Manukau and the Kaipara Harbours, the rock thereafter being called Waitakere.	Davenport, J. C. (1990). <i>Street names of Auckland: their story</i> . Akld, N.Z: Hodder & Stoughton.	
Regional park		Waitakere Quarry Scenic Reserve (Prov)	Te Henga Road	Henderson	Waitakere - this word means bubbling waters, or deep or cascading water. It was also the name of a Maori chief who was murdered here. His head was left on a rock between the Manukau and the Kaipara Harbours, the rock thereafter being called Waitakere.	Davenport, J. C. (1990). <i>Street names of Auckland: their story</i> . Akld, N.Z: Hodder & Stoughton.	
		Waitakere War Memorial Park	Bethells Road	Waitakere	Waitakere - this word means bubbling waters, or deep or cascading water. It was also the name of a Maori chief who was murdered here. His head was left on a rock between the Manukau and the Kaipara Harbours, the rock thereafter being called Waitakere.	Davenport, J. C. (1990). <i>Street names of Auckland: their story</i> . Akld, N.Z: Hodder & Stoughton.	
		Waituna Park	Rimutaka Place	Titirangi			
		Waiwhauwhau-Tram Valley Reserve	Christian Road	Swanson			
		Warner Park	Warner Park Avenue	Laingholm	Warner Park Avenue - Titirangi: Named between 1961 and April 1975	Auckland Libraries. <i>Auckland street names guide: Waitakere street names</i> . Retrieved July 23, 2018, from https://www.aucklandlibraries.govt.nz/Pages/waitakere-street-names.aspx	
		Warner Walk	Western Road	Laingholm			
		Wekatahi Reserve	Garden Road	Piha			
		Welsh Hills Reserve	Welsh Hills Road	Swanson			
		Western Park - Laingholm	Western Road	Laingholm	Western Road - Titirangi: Noted by Waitemata County on 17 February 1928.		
Uru	Uru means west or western and can also mean to enlist. This ingoa (name) refers to the view out to the west from the top of this park where you can clearly see Ngā Rau Pou ā Maki (also known as Te Wao Nui ā Tiriwa or the Waitākere Ranges). This name acknowledges this view whilst also referencing a connection with returned servicemen. Westview Retirement Village which sits adjacent to this reserve area historically provided housing for pensioners and returned servicemen.	Westview Reserve	Janet Clews Place	Glen Eden			
		Wirihana Park	Wirihana Road	Titirangi	Wirihana Road - Titirangi: Named between 1961 and April 1975. Wirihana is difficult to translate with any sureness. Wiri - usually shimmering or shivering; hana - shining or giving off heat. Therefore Wirihana could mean an area with volcanic history	Auckland Libraries. <i>Auckland street names guide: Waitakere street names</i> . Retrieved from https://www.aucklandlibraries.govt.nz/Pages/waitakere-street-names.aspx Davenport, J. C. (1990). <i>Street names of Auckland: their story</i> . Akld, N.Z: Hodder & Stoughton.	
Pānaki	Pānaki means gentle slope. This ingoa (name) refers to the gentle slope of the whenua (land) that leads to a large open area and into the Waikumete stream. It also connects with the many children seen every day in this park sliding down the slide in the playground here.	Withers Reserve	Withers Road	Glen Eden	Wither(s) Road - Glen Eden: Named before 1961, it later became part of Valley Road and then Glendale Road from February 1969.	Auckland Libraries. <i>Auckland street names guide: Waitakere street names</i> . Retrieved July 23, 2018, from https://www.aucklandlibraries.govt.nz/Pages/waitakere-street-names.aspx	
		Wood Bay Reserve	Wood Bay Road	Titirangi	Wood Bay Road - Titirangi: Named before 1961, also an Extension.	Auckland Libraries. <i>Auckland street names guide: Waitakere street names</i> . Retrieved July 23, 2018, from https://www.aucklandlibraries.govt.nz/Pages/waitakere-street-names.aspx	

Māori Name	Meaning of Māori Name	Existing Name	Street	Locality	Brief origin of existing name	Brief source of existing name	Detailed story of existing name
		341-347 Henderson Valley Road	Henderson Valley Road	Henderson Valley			
		Wood Bay Way	Otitori Bay Road	Titirangi			
		Woodbank Reserve	Woodbank Drive	Glen Eden			
Kōmuri	Kōmuri means "gentle breeze". This reflects the swaying of the trees and the lovely aromas carried around this park from the adjacent private gardens.	Woodfern Reserve	Woodfern Crescent	Titirangi			
Kāhui Whetū	Kāhui Whetū is a constellation of stars. The ingoa (name) relates to the positioning of the reserve surrounded by streets and parks that reflect the names of stars and constellations, This area in Glen Eden is often referred to as the zodiac area highlighting the many constellations visible from the area.	Woodglan Road Reserve	Woodglan Road	Glen Eden	Woodglan Road - Glen Eden: Formerly Levy Road, then Woodlands Road, it became Woodglan from February 1969.	Auckland Libraries. <i>Auckland street names guide: Waitakere street names</i> . Retrieved July 23, 2018, from https://www.aucklandlibraries.govt.nz/Pages/waitakere-street-names.aspx	
		Woodlands Park	Minnehaha Avenue	Titirangi			
Pūrua	Pūrua means by two or in pairs. This ingoa (name) refers to the twin streams Te Wai-o-Pareira / Henderson Creek and Huruhuru Creek. A number of tributaries in the western suburbs, including the Waikumete stream that runs through this park, join together to become part of one or the other of these twin streams eventually discharging into the Waitemata harbour.	Woodside Glen	Woodfern Crescent	Titirangi			
		York Road Reserve	York Road	Titirangi	York Road: - Titirangi. Named before 1961.	Auckland Libraries. <i>Auckland street names guide: Waitakere street names</i> . Retrieved July 23, 2018, from https://www.aucklandlibraries.govt.nz/Pages/waitakere-street-names.aspx	
		West Coast Road Reserve	Titch Place	Glen Eden			
Te Pātaka Kōrero o Ōkaurirahi	Ōkaurirahi is the name of the wider Glen Eden area meaning "the place of huge kauri". In pre-European times the upper part of this sub-catchment was distinguished by its mature kauri forest. This is the traditional name for the Glen Eden area. Also refer to ceramco park	Glen Eden Library					
Te Pātaka Kōrero o Titirangi	Titirangi means 'long streaky clouds'. The name was given by Rakataura to this area in commemoration of a hill in the ancient land Hawaiiki.	Titirangi Library					