



Accommodation Option 1 Duder Regional Park

Context

Duder is a popular regional park for walking, picnicking, running, swimming, fishing and sea-kayaking. The coastal farmland offers fantastic views of the Tāmaki Straits, the Hauraki Gulf Islands and the Hunua Ranges.

There are small, sheltered bays and beaches on the park fringes to explore and you can venture out to Whakakaiwhara Point

A lovely short bush walk leads you through remnant coastal forest with taraire, tawa, kānuka, pūriri and karaka. Bushbirds such as ruru/morepork, kererū, piwakawaka (fantail), tauhou (silveryeye) and tūi can be heard there. The tidal flats are important feeding and roosting places for shore and wading birds.

Conservation projects include pest and weed control, riparian protection and regenerating coastal forest.

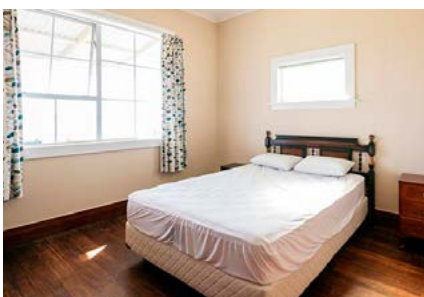
The Tainui canoe visited this place in the 14th century and some of the crew stayed here harvesting the kaimoana and forest foods. Ngāi Tai's affiliation with the land is reflected in the archaeological sites on and near the park. Thomas Duder bought property from Ngāi Tai in the 1860s and farmed here until it was converted to a regional park in 1995.



Kitchen/dining



Lounge



Bedroom 1



Backyard

Te Kuiti Bach

The residency cottage sits on Umupuia Beach, below Duder Regional Park. It has a view of the pohutukawa fringed Whakakaiwhara Peninsula from the front veranda and a rural outlook to the park barn and paddocks behind the house.

Bach facilities

- Bedroom 1 – queen bed
- Bedroom 2 – single bunk beds & a single bed
- Kitchen – fridge/freezer, oven, microwave, toaster, kettle, pots and pans, crockery and cutlery provided
- Bathroom – shower and toilet
- Heating – wood fire in lounge, electric oil column heaters for bedrooms
- Water supply – treated tank water with UV filtration
- Phone coverage: no wifi but mobile data reception would allow coverage with a portable mobile device
- No pets of any kind are allowed at this park to protect the wildlife
- No smoking: our regional parks are smoke-free.

Workspace

There is a basic two-roomed bunkhouse behind the house which could be used for a studio.

Amenities

The closest shops and cafés are at Clevedon and Maraetai villages. Te Kuiti bach is ~6 kms from Maraetai and ~11kms from Clevedon.