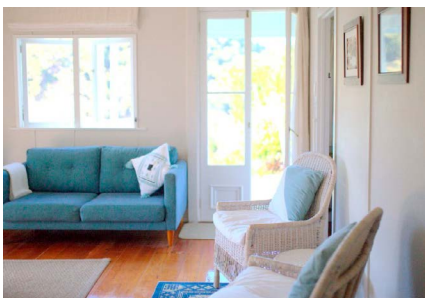




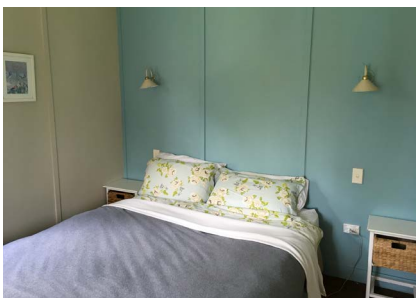
Glenfern Cottage on the left, Fitzroy House right



Glenfern Cottage



Kitchen, dining, lounge



Bedroom 1



Work space/outdoor dining

## Accommodation Option 1 Glenfern Sanctuary Aotea/Great Barrier

### Context

Glenfern Sanctuary was originally the project of Tony Bouzaid who built the predator proof fence to protect wildlife on his land and initiated some replanting. Auckland Council bought the sanctuary from the family in 2014 and are continuing the conservation work via Glenfern Trust. Glenfern Sanctuary is now a regional park with a strong focus on conservation.

The sanctuary is part of the predator fenced Kotuku Peninsula, that includes other land parcels including one owned by DOC.

The sanctuary is situated opposite Port Fitzroy Wharf. There is a luxurious lodge, Fitzroy House (the public can rent for conferences, family occasions and events), the caretakers house and nearby Glenfern Cottage where the selected artist will live.

Behind the cottage is a short steep walk to Sunset Rock (view from there depicted above) and a bush walk beyond to a kauri 'crows nest'. Kayaking is possible from below cottage.

NB Great Barrier has no mains power. The island is an official night sky sanctuary.

### Glenfern Cottage - Aotea/Great Barrier

- Awesome views across harbour
- French doors out to verandas with glorious views x 2
- Large outdoor eating area behind cottage with bbq
- Open plan – kitchen, dining, living.
- Lounge area – sofa and two arm chairs. Dining room – table & chairs sits 4
- Kitchen - fridge, 4 hob gas oven (no toaster or microwave)
- Bedroom 1 – double bed
- Bedroom 2 – bunk room (2 single beds)
- Bedroom 3 – 2 single beds
- Bathroom – shower, sink. Toilet – separate room
- Fireplace for heating. Have use of the Lodge's washing machine
- Phone - Vodafone ok. 2Deg phone coverage can be patchy. Spark no good.
- Guest wifi available
- Filtered spring water for drinking and showering.
- No mains power! 24hr power supplied by generator, some gas and solar power.
- Lawn and garden surrounds cottage. Fantail, tui, kaka, pāteke and kotare visit garden
- Caretakers/conservation workers on site – nearby.

### Working space

- Spacious trellised semi outdoor area behind cottage. Has concrete floor.
- Could use one of bedrooms for non-messy work.

### Shopping and supplies

- Countdown delivers to Port Fitzroy once a week via Sealink ferry.
- Port Fitzroy Shop – supplies most groceries. The shop is 15m minute walk from accommodation. Petrol at Port Fitzroy (open minimal hours) .
- Other facilities including a small library and shops are located at Claris a 45 min drive away.

### Need to know

- This is a remote site - the artist needs to be well equipped and supplied on arrival, and be independent and resourceful.
- One pre-booked return flight will be paid for.
- No pets of any type allowed - this is a wildlife sanctuary.
- Aotea/ Great Barrier is a 30 minute flight from Auckland. Flights run daily from \$89 one way.
- Sealink passenger and vehicle ferry offers spasmodic sailings.