

1. Purpose

The purpose of this Practice Note is to provide guidance information about liquid trade waste; trade waste includes waste from food premises and commercial and industrial operations. It is important that industrial liquid waste discharged into Auckland's wastewater system meets stringent standards.

Trade waste means any liquid (with or without matter; in suspension or solution) that is discharged from trade premises to a waste water system in the course of **any** business activity or operation.

This Practice Note applies to trade waste discharging into WATERCARE waste water systems. The discharge of trade waste to the stormwater system is not permitted.

2. Background

The Building Control department of Auckland Council and Watercare the Network Utility Operator (NUO) share a joint responsibility in respect to trade waste. Both entities have agreed that it would be useful to set out the basis on which they intend to carry out their respective functions in terms of the approval and processing of liquid trade waste under the New Zealand Building Code (NZBC) and Auckland Council Bylaws.

Building Control assesses applications against the provisions of the New Zealand Building Code and Watercare against the Auckland Trade Waste Bylaw 2013.

3. Compliance with the New Zealand Building Code and Trade Waste Bylaw 2013

New Zealand Building Code (NZBC)

- Industrial liquid waste refer to G14/AS1 or G14/VM1
- Foul Water refer to G13/AS2

Where waste water is discharged into WATERCARE waste water systems the part of the discharge system that is used to convey the waste after treatment must comply with G13 Foul Water.

G13/AS2 provides an acceptable solution for grease traps. Grease interceptors and digesters are alternative solutions and generally require approval from WATERCARE.

WATERCARE will accept other types of grease traps as long as they are designed to comply with the Council Trade Waste Bylaw 2013 and WATERCARE Standards.

Note:
Grease traps should be located outside the building for ease of maintenance and cleaning. Where this is not physically possible, other devices such as convertors and interceptors maybe considered (e.g. "grease / fat convertors", and "grease / fat interceptors"). However, this will depend upon discharge volumes, location within the building, ventilation requirements and size (storage capacity).

Trade Waste Bylaw 2013 (effective July 2014)

The Trade Waste Bylaw separates waste into three categories:

1. **Deemed trade waste: Schedule 1**
Includes but is not limited to waste from food outlets, beauticians, bakeries, dental clinics, laundries, etc
2. **Conditional Trade Waste: Schedule 2**
Includes but is not limited to waste from mortuaries, dairy products, timber treatment processes, footwear and rubber manufacturing processes
3. **Prohibited Trade Waste: Schedule 3**
Includes but is not limited to genetic waste, asbestos, radio active waste, flammable, explosive waste, etc

4. Building consent applications and trade waste approval

Deemed Trade Waste:

If the BCA is satisfied that the deemed trade waste discharge complies with NZBC / G13 and G14 (as applicable); and

- the activity **must** comply with Schedule 1 of The Trade Waste Bylaw 2013
- the discharge flow rate **must not** exceed 10 cubic meters per day and **must not** exceed 0.5 litres per second
- the discharge **must** comply with WATERCARE Controlled Substances Standards
- a trade waste agreement and approval from WATERCARE is **not required**; and
- the BCA may grant the consent

The owner / applicant must provide a statement confirming that the trade waste treatment device will

- comply with the requirements of WATERCARE (noted above)
- be installed, operated and maintained in accordance with the manufacturer's specifications and instructions; and
- if the site operation and / or maintenance alters in such a way that the effluent quality is compromised; or there is an increase in the discharge flow rate, the owner will contact and inform WATERCARE immediately so that the trade waste discharge can be re-evaluated

Conditional Trade Waste:

Conditional trade waste means:

- (a) any trade waste discharged to the public wastewater system as a result of an activity listed in Schedule 2 and complying with the controlled substances standards, unless otherwise approved by Watercare in a trade waste agreement; or
- (b) any trade waste discharged from trade premises, including as a result of an activity listed in Schedule 1, where the volume of the discharge exceeds 1 cubic metres per day, or is greater than 0.5 litres per second; or
- (c) any trade waste which Watercare determines to be conditional trade waste under clause 7 of the Trade Waste Bylaw 2013 (see below)

Watercare may determine that any trade waste is conditional trade wastewater where the:

- pollutant load for any substance or volumetric discharge exceeds 5% or other Council specified proportion of the total load or volume received at the treatment plant; or
- trade activity and processes are of such a complexity or size, or employ such chemicals, raw materials or feedstock that the risks of producing a trade waste are considered significant; or
- discharge contains substances that may at times exceed the Controlled Substances Standards; and
- a trade waste agreement and approval from Watercare **is required**

Prohibited Trade Waste:

No person may discharge or introduce prohibited trade waste into the public waste water system.

Please refer to page 4 for flowchart

For more information about trade waste:**Trade waste approvals:**

<http://www.watercare.co.nz>

The Trade Waste Bylaw 2013:

<http://www.watercare.co.nz/SiteCollectionDocuments/AllPDFs/PDFs%20v2%20111010/Auckland%20Trade%20Waste%20Bylaw%202013%20-%20Official%20Copy.pdf>

Trade Waste FAQ's:

<http://www.watercare.co.nz/business/tradewaste/Trade%20Waste%20FAQs/Pages/default.aspx>

Controlled Substances Standard

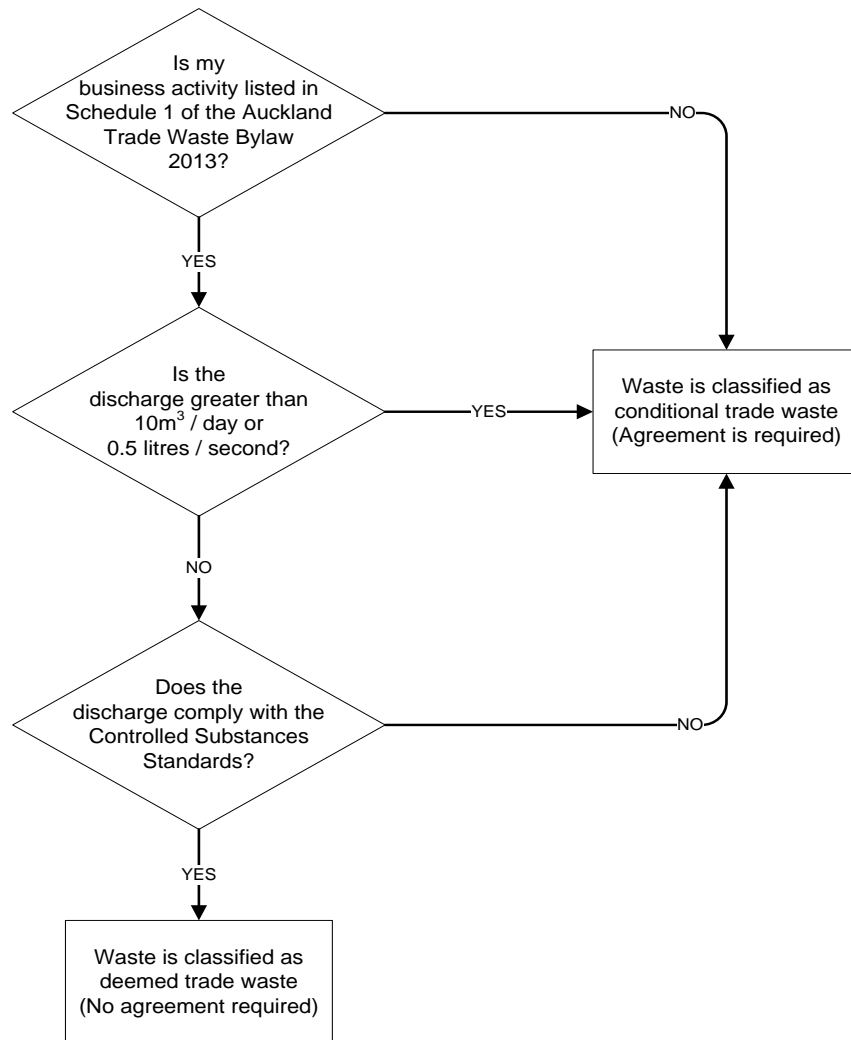
This document sets out the acceptable limits (concentration levels) of commonly controlled substances that may be contained in trade waste discharged to the public waste water system.

<https://www.watercare.co.nz/SiteCollectionDocuments/AllPDFs/PDFs%20v2%20111010/Trade%20Waste%20Bylaw%20FINAL%2025July13%20-Controlled%20Substances.pdf>

Trade Waste Team

Phone (09) 539 7655 or email: tradewasteinfo@water.co.nz

Is my waste classified as deemed or conditional trade waste?



NOTE:

WATERCARE may also determine that any trade waste requires a trade waste agreement