

- LEGEND**
- Tamaki Path Centreline**
    - B - Pt England Coastal
  - Proposed Surface and Structures**
    - Cut
    - Fill
    - Fill retaining wall
    - Bridges and boardwalks
    - Shell / hoggin
  - Planting**
    - Enhancement planting (not part of this application)
  - Existing Environmental Constraints**
    - Significant ecological area
    - Archaeological Settlement Site
    - Archeological Site
    - Floodplain
    - Overland flow path
    - Tree trunks

**FOR RESOURCE CONSENTING**

Sheets 9 to 25 of this mapbook are included as part of the consent application for the South Section

Scale: 1:500 @ A3  
 0 5 10 20  
 Metres  
 Map Projection: Transverse Mercator  
 Horizontal Datum: NZGD 2000  
 Grid: NZGD 2000 New Zealand Transverse Mercator

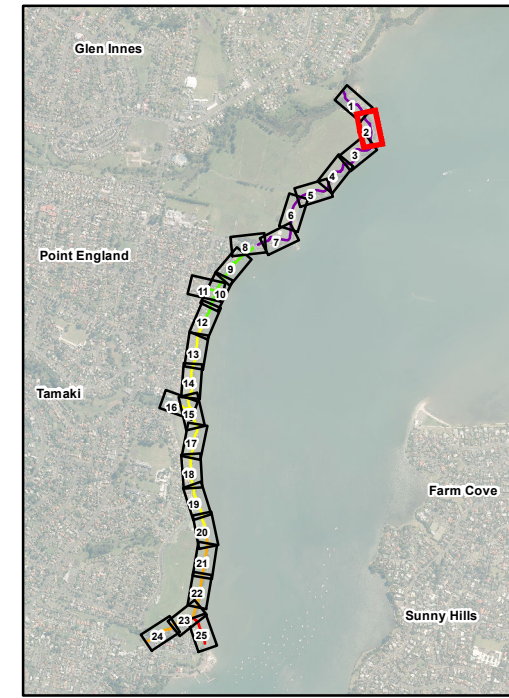
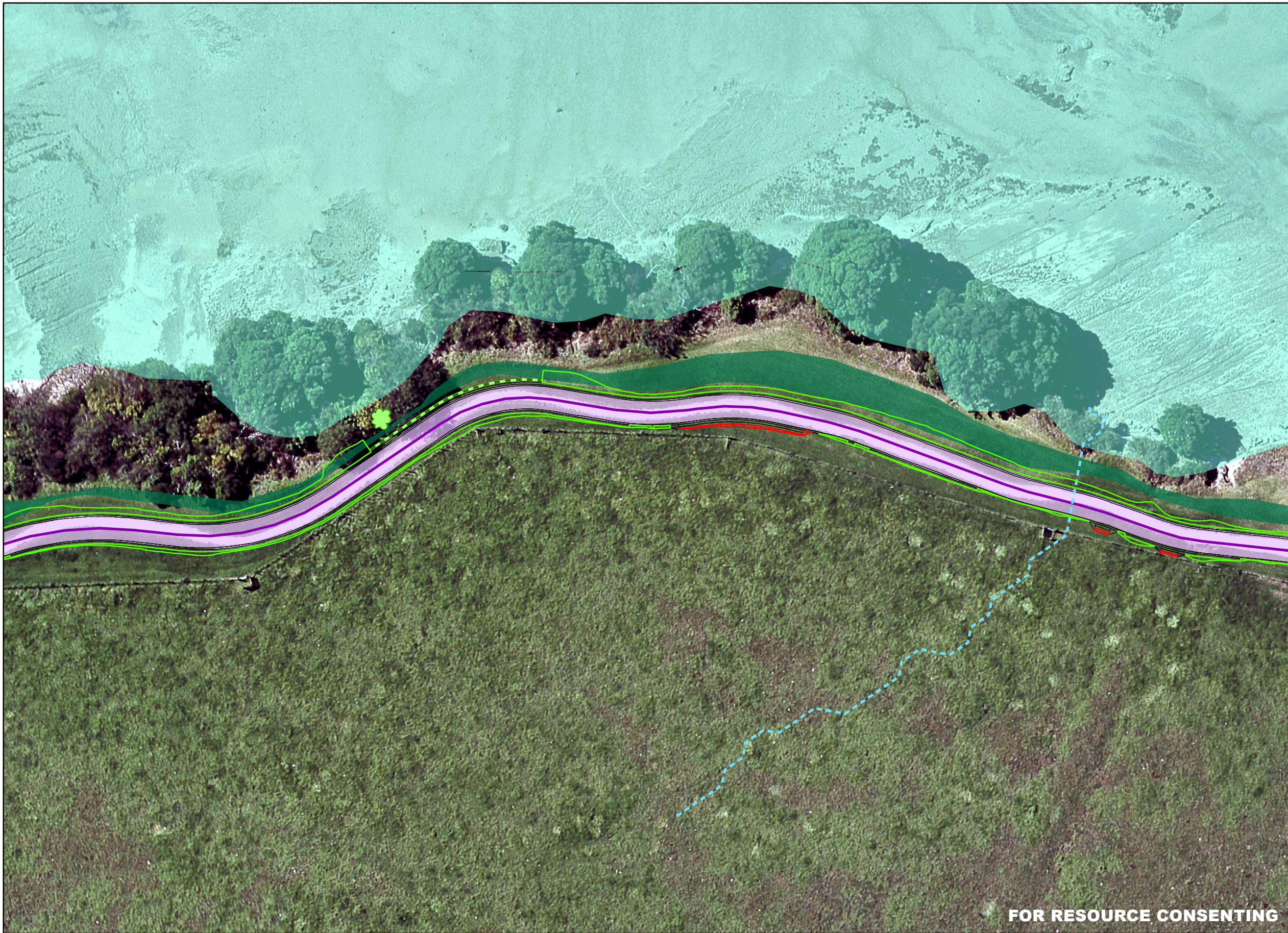


Auckland Council  
 Tamaki Path Project - Resource Consent Application

Job Number	51-34097
Revision	B
Date	23 Aug 2017

Updated Developed Design After Stakeholder Consultation  
 Pt England Reserve to Panmure Wharf

Page 1 of 25

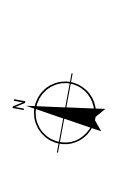


- LEGEND**
- Tamaki Path Centreline**
    - B - Pt England Coastal
  - Proposed Surface and Structures**
    - Cut
    - Fill
    - Fill retaining wall
    - Shell / hoggin
  - Planting**
    - Enhancement planting (not part of this application)
  - Existing Environmental Constraints**
    - Significant ecological area
    - Overland flow path
    - Tree trunks

**FOR RESOURCE CONSENTING**

Sheets 9 to 25 of this mapbook are included as part of the consent application for the South Section

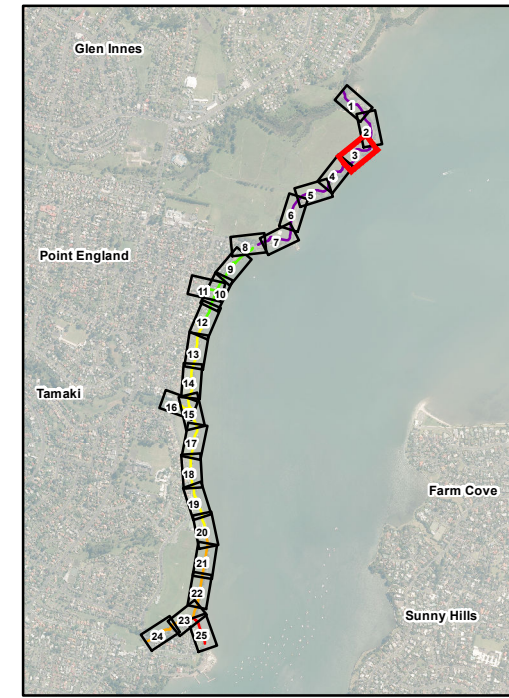
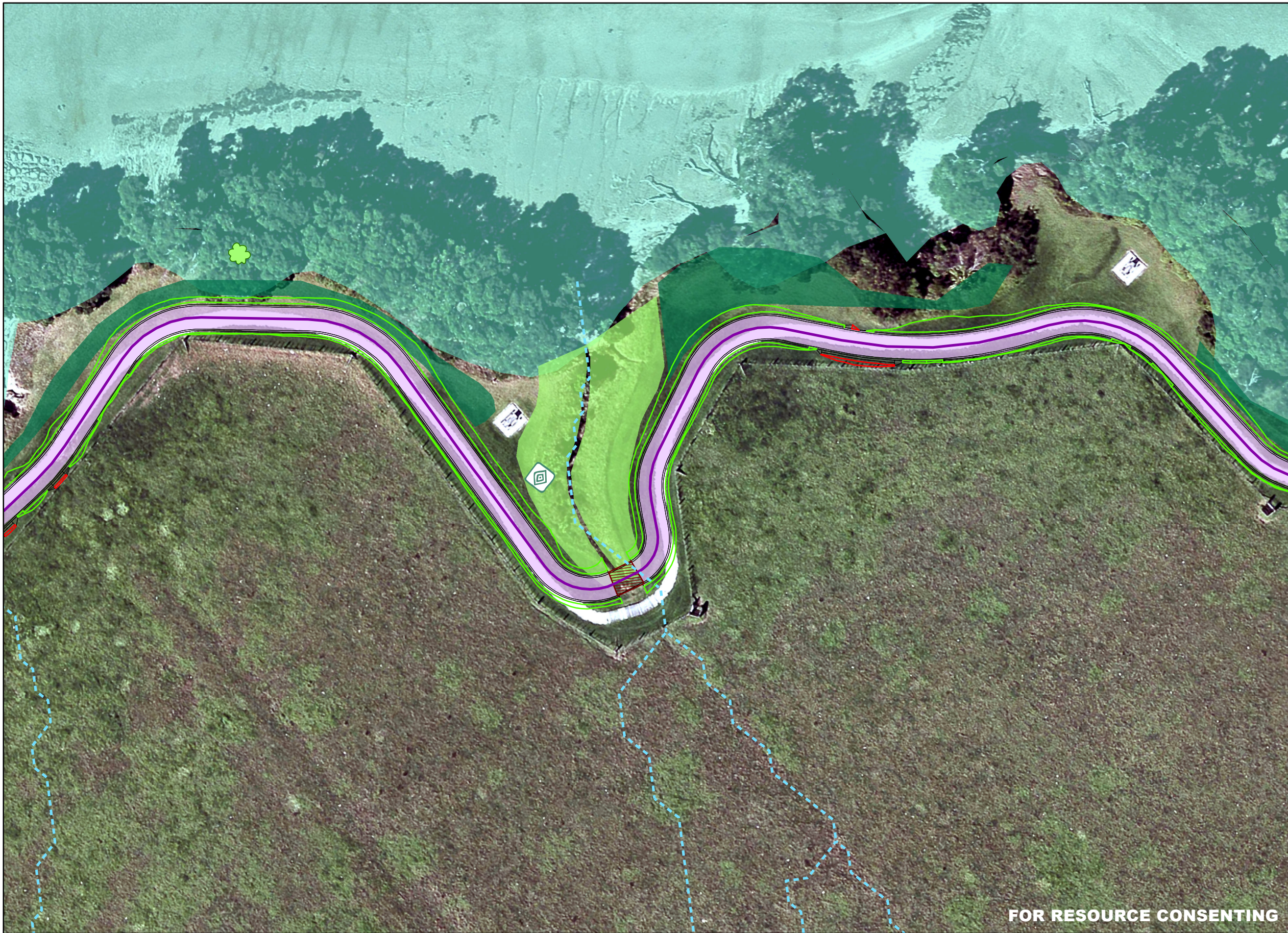
Scale: 1:500 @ A3  
 0 5 10 20  
 Metres  
 Map Projection: Transverse Mercator  
 Horizontal Datum: NZGD 2000  
 Grid: NZGD 2000 New Zealand Transverse Mercator



Auckland Council  
 Tamaki Path Project - Resource Consent Application

Job Number	51-34097
Revision	B
Date	23 Aug 2017

Updated Developed Design After Stakeholder Consultation  
 Pt England Reserve to Panmure Wharf



- LEGEND**
- Tamaki Path Centreline**
    - B - Pt England Coastal
  - Proposed Surface and Structures**
    - Cut
    - Fill
    - Bridges and boardwalks
    - Shell / hoggin
  - Planting**
    - Enhancement planting (not part of this application)
    - Mitigation planting (part of this application)
  - Existing Environmental Constraints**
    - Significant ecological area
    - Archeological Site
    - Overland flow path
    - Tree trunks

**FOR RESOURCE CONSENTING**

Sheets 9 to 25 of this mapbook are included as part of the consent application for the South Section

Scale: 1:500 @ A3  
 0 5 10 20  
 Metres  
 Map Projection: Transverse Mercator  
 Horizontal Datum: NZGD 2000  
 Grid: NZGD 2000 New Zealand Transverse Mercator

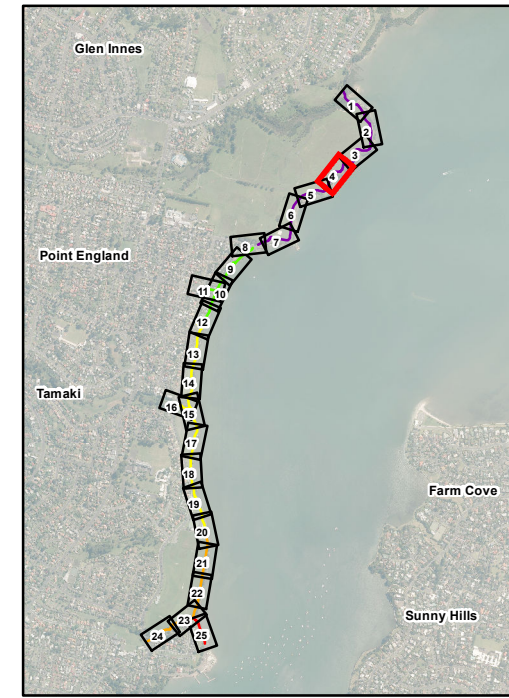


Auckland Council  
 Tamaki Path Project - Resource Consent Application

Job Number	51-34097
Revision	B
Date	23 Aug 2017

Updated Developed Design After Stakeholder Consultation  
 Pt England Reserve to Panmure Wharf

Page 3 of 25

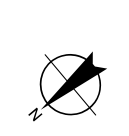


- LEGEND**
- Tamaki Path Centreline**
    - B - Pt England Coastal
  - Proposed Surface and Structures**
    - Cut
    - Fill
    - Fill retaining wall
    - Shell / hoggin
  - Planting**
    - Enhancement planting (not part of this application)
  - Existing Environmental Constraints**
    - Significant ecological area
    - Overland flow path
    - Tree trunks

**FOR RESOURCE CONSENTING**

Sheets 9 to 25 of this mapbook are included as part of the consent application for the South Section

Scale: 1:500 @ A3  
 0 5 10 20  
 Metres  
 Map Projection: Transverse Mercator  
 Horizontal Datum: NZGD 2000  
 Grid: NZGD 2000 New Zealand Transverse Mercator

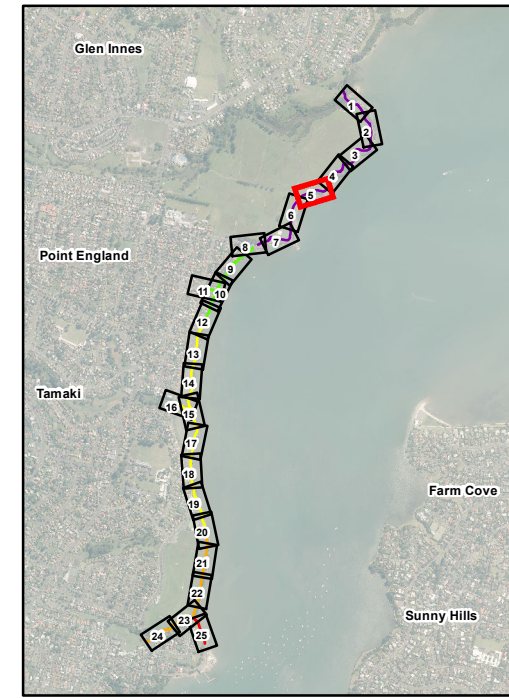


Auckland Council  
 Tamaki Path Project - Resource Consent Application

Job Number	51-34097
Revision	B
Date	23 Aug 2017

Updated Developed Design After Stakeholder Consultation  
 Pt England Reserve to Panmure Wharf

Page 4 of 25



- LEGEND**
- Tamaki Path Centreline**
    - B - Pt England Coastal
  - Proposed Surface and Structures**
    - Cut
    - Fill
    - Fill retaining wall
    - Shell / hoggin
    - Aggrok surface for amenity areas
  - Planting**
    - Enhancement planting (not part of this application)
  - Existing Environmental Constraints**
    - Significant ecological area
    - Archeological Site
    - Overland flow path
    - Tree trunks

**FOR RESOURCE CONSENTING**

Sheets 9 to 25 of this mapbook are included as part of the consent application for the South Section

Scale: 1:500 @ A3  
 0 5 10 20  
 Metres  
 Map Projection: Transverse Mercator  
 Horizontal Datum: NZGD 2000  
 Grid: NZGD 2000 New Zealand Transverse Mercator

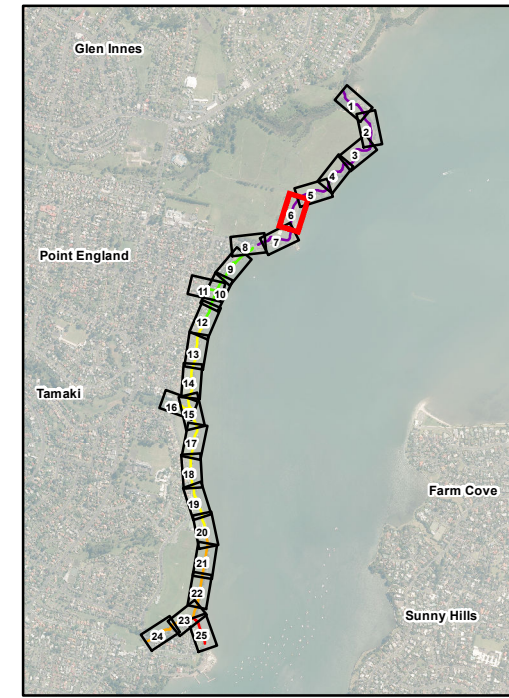


Auckland Council  
 Tamaki Path Project - Resource Consent Application

Job Number	51-34097
Revision	B
Date	23 Aug 2017

Updated Developed Design After Stakeholder Consultation  
 Pt England Reserve to Panmure Wharf

Page 5 of 25

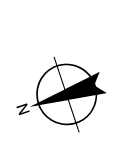


- LEGEND**
- Tamaki Path Centreline**
    - B - Pt England Coastal
  - Proposed Surface and Structures**
    - Cut
    - Fill
    - Shell / hoggin
  - Planting**
    - Enhancement planting (not part of this application)
  - Existing Environmental Constraints**
    - Significant ecological area
    - Overland flow path

**FOR RESOURCE CONSENTING**

Sheets 9 to 25 of this mapbook are included as part of the consent application for the South Section

Scale: 1:500 @ A3  
 0 5 10 20  
 Metres  
 Map Projection: Transverse Mercator  
 Horizontal Datum: NZGD 2000  
 Grid: NZGD 2000 New Zealand Transverse Mercator

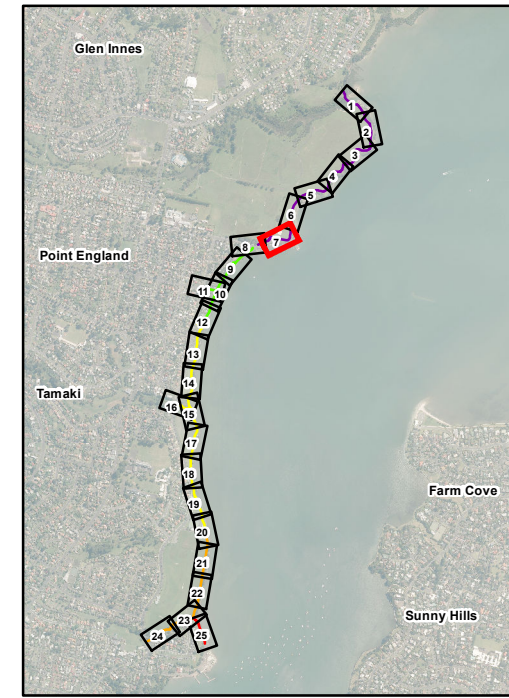


Auckland Council  
 Tamaki Path Project - Resource Consent Application

Job Number	51-34097
Revision	B
Date	23 Aug 2017

Updated Developed Design After Stakeholder Consultation  
 Pt England Reserve to Panmure Wharf

Page 6 of 25



- LEGEND**
- Tamaki Path Centreline**
  - B - Pt England Coastal
  - Proposed Surface and Structures**
  - Cut
  - Fill
  - Exposed aggregate concrete
  - Shell / hoggin
  - Existing Environmental Constraints**
  - Significant ecological area
  - ◊ Archeological Site
  - - - Overland flow path
  - ★ Tree trunks

**FOR RESOURCE CONSENTING**

Sheets 9 to 25 of this mapbook are included as part of the consent application for the South Section

Scale: 1:500 @ A3  
 0 5 10 20  
 Metres  
 Map Projection: Transverse Mercator  
 Horizontal Datum: NZGD 2000  
 Grid: NZGD 2000 New Zealand Transverse Mercator

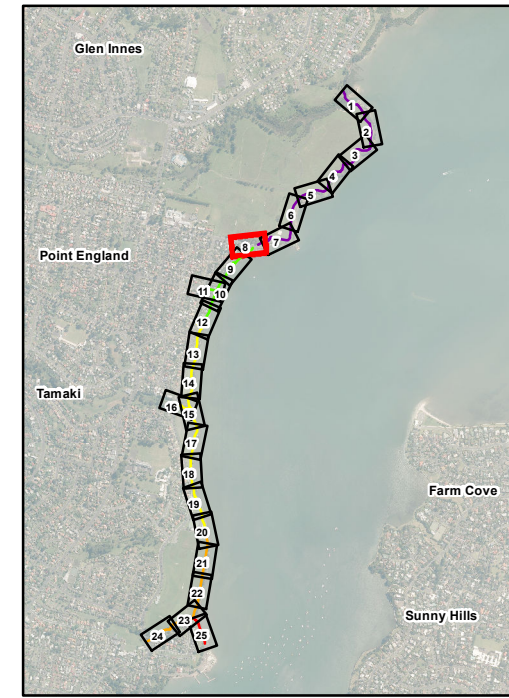


Auckland Council  
 Tamaki Path Project - Resource Consent Application

Job Number	51-34097
Revision	B
Date	23 Aug 2017

Updated Developed Design After Stakeholder Consultation  
 Pt England Reserve to Panmure Wharf

Page 7 of 25



- LEGEND**
- Tamaki Path Centreline**
- B - Pt England Coastal
  - E - Riverside Residential
- Proposed Surface and Structures**
- Cut
  - Fill
  - Fill retaining wall
  - Exposed aggregate concrete with shell
  - Exposed aggregate concrete
- Planting**
- Enhancement planting (not part of this application)
- Existing Environmental Constraints**
- Significant ecological area
  - Overland flow path
  - Tree trunks

**FOR RESOURCE CONSENTING**

Sheets 9 to 25 of this mapbook are included as part of the consent application for the South Section

Scale: 1:500 @ A3

0 5 10 20  
Metres

Map Projection: Transverse Mercator  
Horizontal Datum: NZGD 2000  
Grid: NZGD 2000 New Zealand Transverse Mercator



Auckland Council  
Tamaki Path Project - Resource Consent Application

Job Number	51-34097
Revision	B
Date	23 Aug 2017

Updated Developed Design After Stakeholder Consultation  
Pt England Reserve to Panmure Wharf

Page 8 of 25