

Puhinui Warkworth Community Voices



Acknowledgements

Community Think would like to first acknowledge Ngāti Manuhiri as mana whenua of Puhinui Warkworth and their significant role in this project.

We would like to acknowledge all the people, whānau, organisations, and schools who participated in the different engagements. Your collective knowledge, experience and care for your community and its future has nourished this process of collecting community voices. It is through coming together and connecting with all the different parts of a community that the magic happens—we hope that you’ve enjoyed being a part of this process as much as Community Think has enjoyed spending time with you.

We would like to particularly acknowledge the people and organisations who were a part of the ongoing community guidance group, who brought the voices of their community into every part of this project.

- Warkworth Library
- Mahu Vision
- Springboard Trust
- Women’s Centre Rodney
- Forest and Bird
- One Mahurangi
- Rodney Inclusive Communities

Contents

Acknowledgements	3
What’s this about?	4
What you said	5
Your ideas for infrastructure, places & design	9
Your ideas for activities	12
Themes at a glance	14
Things you told us to consider	16
How we heard your ideas	18
Community Voice in numbers	20
How a community-led brief was created for the urban design team	22
Testing images	24
Themes	30
Ngati Manuhiri Aspirations	37

What's this about?

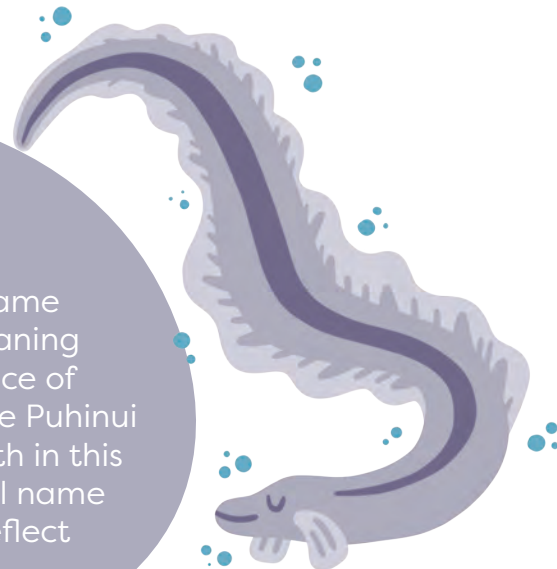
This Community Voices report is the result of the community process undertaken as part of the Puhinui Warkworth Centre Plan.

This process took place March 2022–December 2022 and was built on the rich knowledge of all the people who connect with Puhinui Warkworth and generated ideas for the centre plan. These ideas were then further workshopped and tested in order to create a community-led brief for the urban design team writing the plan.

Many of your ideas for your community will be a part of this centre plan, but through the many conversations Community Think had with you, there were a lot of other ideas for infrastructure, activities and things to consider. This document takes a broader look at community voices so that anyone in the community can pick this up and use it to support funding applications, community activities, advocacy, and as a reminder of what has been said for any future work.

Puhinui

The name Puhinui is the original name for Warkworth. This name holds meaning for all our communities here as a place of reflection and connection. The name Puhinui has been used alongside Warkworth in this project to honour the traditional name of this area while we reflect on its future.



A reminder of the work that's been done



To apply for funding and grants



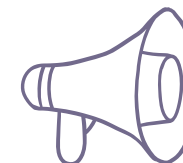
To guide community-led activities



To advocate for resources



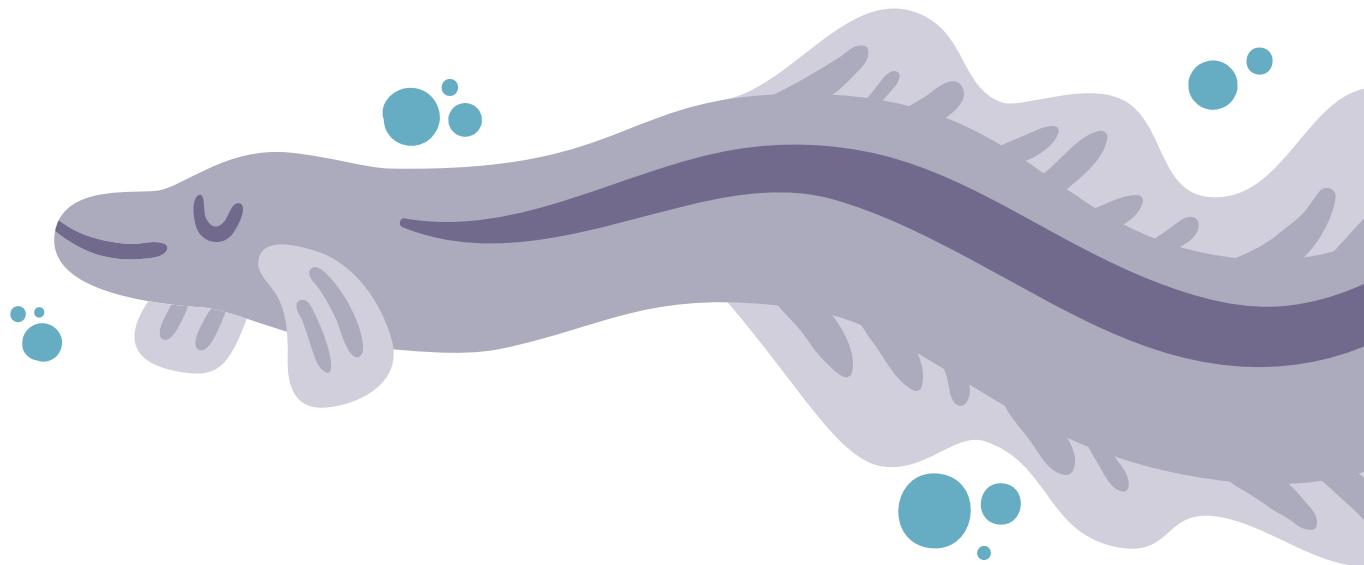
To guide future planning and decision making



How to read this doc?

Find the speaker in the corner to help guide you through the document.

What you said





“I would support any measures to encourage the greater participation of local Pasifika community (mainly Kiribati and Tuvalu people) in Warkworth. The Pasifika community is quite large but seems to be almost invisible in Warkworth. It would be great to have a maneaba or fale structure in the town centre.”



“I would love Warkworth to be more child friendly. I am a first time Mum with an 8 month old. I currently have to travel to Silverdale/Stanmore Bay every week to do any baby related activities (swim lessons etc). The best walks/ playgrounds I’ve found are in Snells Beach. Why doesn’t Warkworth have anything like this? Lucy Moore Park is so hilly and the walk along the river is very short. I’d love the town to consider ways it could promote family living.”



“Warkworth is boring, I wish there were places for us to hang out with other young people, like an arcade or a food court. We have to go into [Auckland] city if we want to do something fun.”

“I want to see more input from Ngāti Manuhiri in how the town looks, feels and in decision making. The playgrounds and pathways and design should reflect the history. It would be awesome to see a cultural and education centre where people can weave, carve, and learn about the history of the awa and the land.”





“I am worried that the upgrades to SH1 will make Warkworth a ghost town. We need to make it a destination to stop at on the way to other places or as a day trip. Lots of activities, beautiful nature walks, water activities at the cement works. The area has a wealth of artists and craft people. It could be that the draw card is Warkworth’s sustainability—full of op shops, community orchards and local art/crafts.”

Resident

“I would love for Warkworth to have a well designed centrally located purpose built community centre facing the river with access for all. An intergenerational place to gather, learn, share and spend time.”



“I have a child in a wheelchair and Warkworth isn’t very accessible—the pathways are not accessible around town and along the river. The playground has terraces and no ramps. We need to make sure that disabled people, elderly and people with prams can move freely around the town centre.”

Community worker

“I am really concerned about the housing crisis. There are homeless families whose kids go to the local schools but they can’t get emergency accommodation so are having to move out of their community. Rental housing is really expensive and there is hardly any state housing.”



Primary Student. Te Kura o Puhinui



“ This world is not one of equality, meaning some people can’t easily access the things they need, in order to live a healthy and happy life. This is why we should have a community orchard. You’re probably wondering, what’s this going to achieve? Well, because of all the fruit produced, people who struggle with the high prices of food can come and get all the fruit they need. In return, they can help care for the gardens. ”

“ There should be water-based activities. The pathways should be extended to the cement works and there should be more activities there. Kayaks and paddle boats should be available to go down the river, or a small water taxi. The river needs to be cleaned so it is swimmable and there should be education around its sustainability and its history. ”



“ I think the car park by the river is such a waste of potentially usable space. There could be more done to develop this special space. It could be a shared and versatile space for gathering—dancing, playing games, communal space.

The town has its back to the river. It would be great to have more emphasis on the river. The area around the library is a logical place to have a community centre which Warkworth lacks. A community centre here would encourage more intergenerational socialising. ”

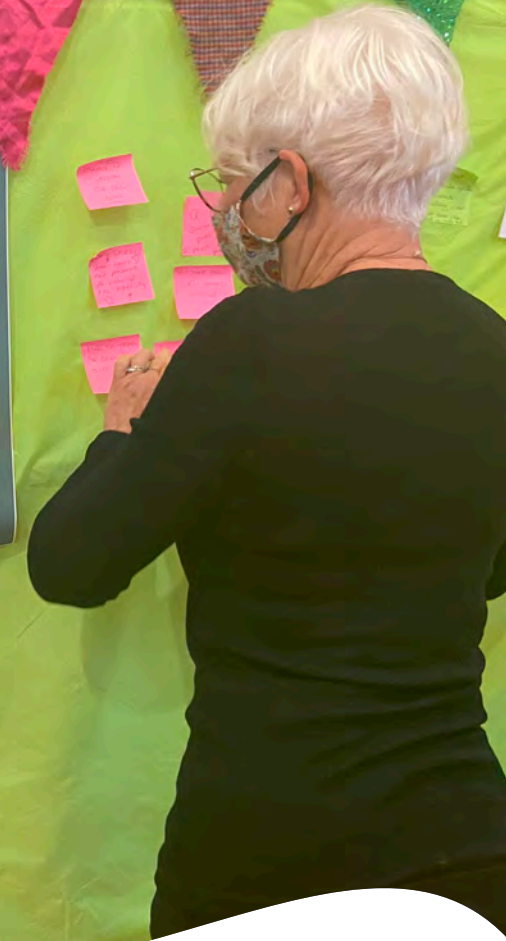
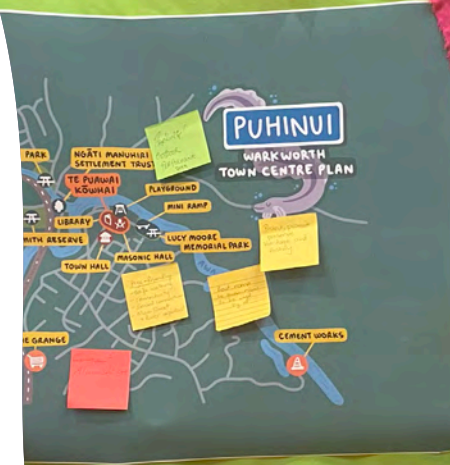
Resident



“ A great local public transport system with electric shuttles. Well sealed roads so residents are able to ride in from neighbouring rural roads. Great parking for cycles and electric scooters, preferably under cover. ”



**Your ideas for
infrastructure,
places & design**



Waka ama storage

Electric ferry to take you to Matakana, Sandspit and Auckland CBD

Māori urban design and art in the town centre

Arcade and indoor youth space

An education centre by the river to talk about the awa, sustainability and history

A food court with affordable food

A swimming pool

Lighting in the trees and footpaths

A community cinema

Cycle ways and pathways that extend all around Warkworth and to all the surrounding beaches

Outdoor gym equipment

Food forests and fruit trees.

Extending the walking tracks all around to cement works

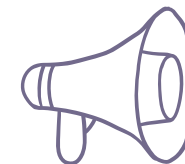
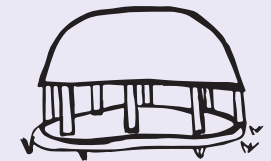
Electric shuttle buses that take people around town and to the beaches

Free WIFI in public spaces

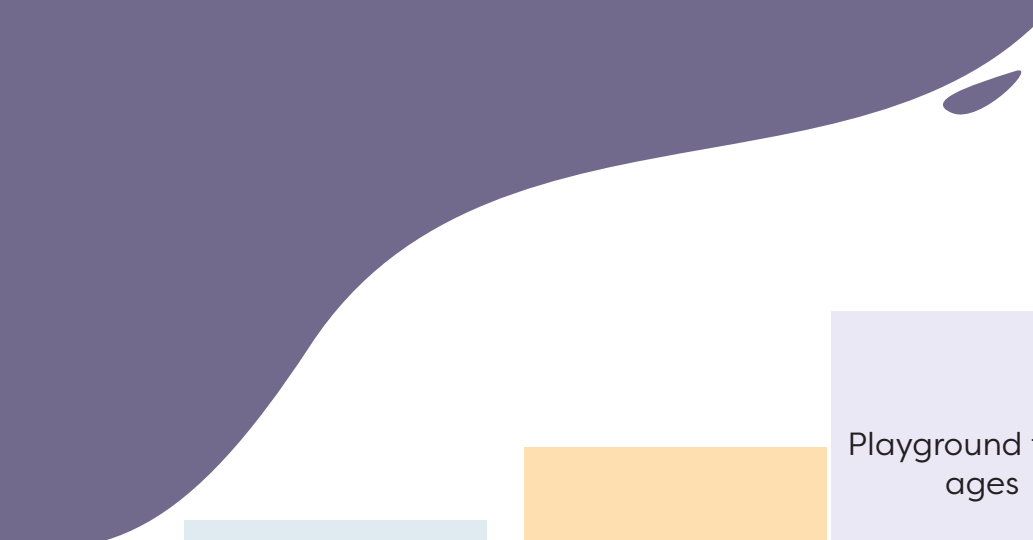
Arcade and indoor youth space

A multi-use community centre or leisure centre

A Maneaba



Infrastructure are all the physical things needed to keep everything going.



A food court with affordable food

Turn the shops around to face the river

BBQ in parks and cement works

Playground for all ages

Affordable apartment for single parents

Community Composting

Solar powered community map/directory

Fenced dog park

A community stage

Public showers

More pedestrian only spaces

Local affordable shops

Kayak hire

Bridge across the river

Shade, shade, shade

Expand the library, make it bigger

An education centre by the river to talk about the awa, sustainability and history

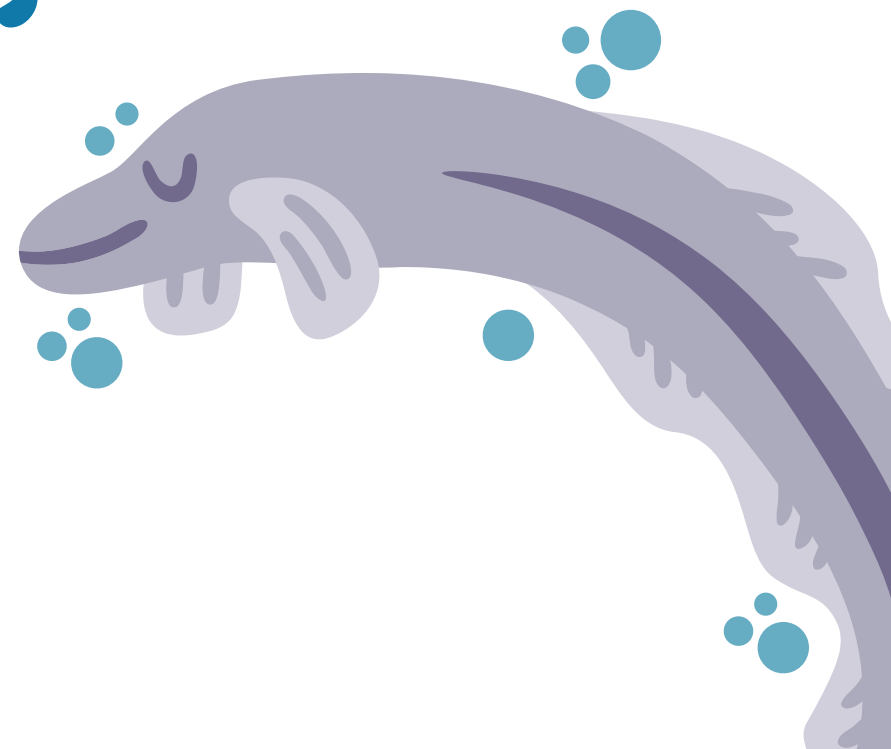
Precinct in Shoemith



Infrastructure are all the physical things needed to keep everything going.



Your ideas for activities



A free store where excess food goes

Education walks along awa Mahurangi

Waka ama

Repair cafés

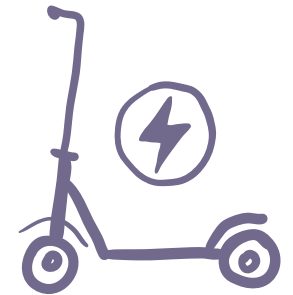
More social groups

A movie theatre or regular pop up movies in the parks

Farmers and night markets

Youth radio station

Making Warkworth a world known eco town



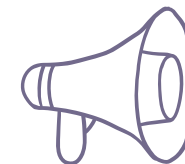
E-scooter and bike hire

Free boat rides on the Jane Gifford



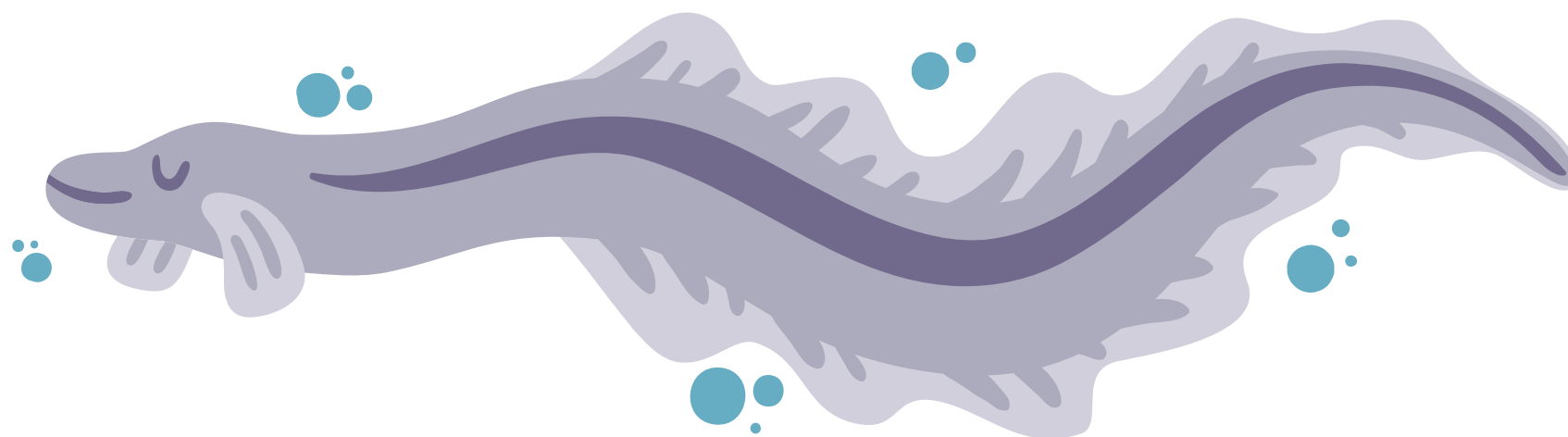
More art classes

Outdoor concerts in Lucy Moore



So many ideas were contributed! These were collated and turned into key themes

Themes at a glance



PUBLIC FACILITIES & SERVICES

that foster inter-generational (& intra-generational) connection & community wellbeing



ACCESSIBLE PATHWAYS

to getting around town: cycle, walk, wheel & public transport options connect up the town & its surrounding areas



AWA MAHURANGI

is the pulsing heart of the town, the town should be re-oriented towards it.



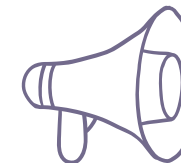
SUSTAINABLE & CIRCULAR ECONOMY:

Places to grow food & trees, places to share skills



MORE PUBLIC SPACES

to eat, meet & connect by the river & in the parks.



Themes were discussed alongside ideas at a Meaning Making session where the community came up with considerations for the urban design team

**Things you told
us to consider**





Climate change and flooding risks and the need to think about what infrastructure is built close to river.

Transitioning to different modes of transport alongside climate strategies—public transport, cycling etc. balanced with need for car parks.

What heritage is being honoured? Centering mana whenua when talking about history.

SH1 bypass leading to nobody stopping in Warkworth on their way to other destinations. Need to make the town centre a destination that draws people in.

There used to be a lot of artists but there is not a lot of space or opportunity for the arts to flourish.

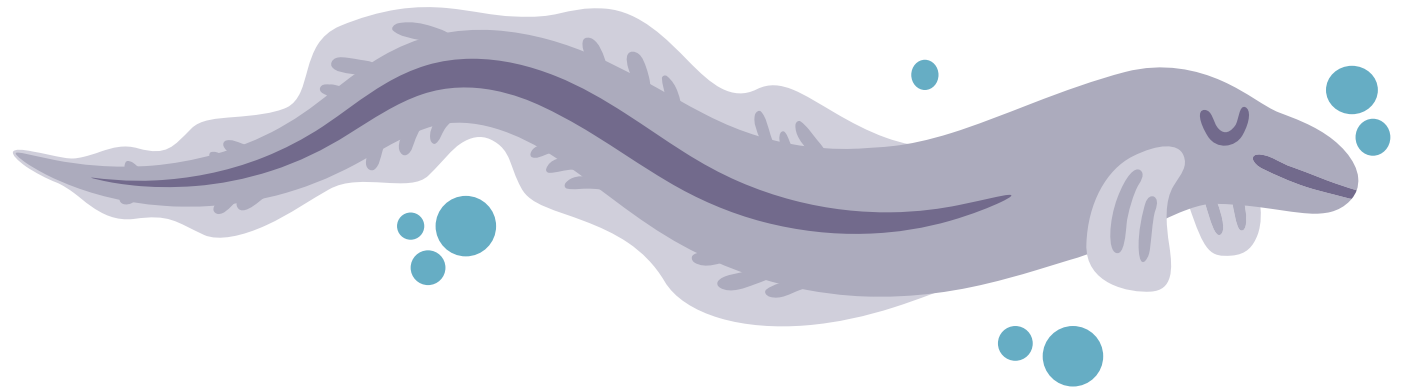
Box development meaning that people who live in outer areas may not come to Warkworth to do their shopping.

Expensive rents meaning more boutiques, arts or community orientated groups cannot afford to rent a shop front meaning there risks increases in chain stores e.g. more vape shops.

Council budgets and limited resources to make visions the community have come to life.

There are a lot of new people moving to the area with all the new development happening. Making sure the town reflects the diverse communities and has enough infrastructure (schools etc).

Youth often leave the area to hang out and leave when they get older as there is not enough industry or opportunities for them.



How we heard your ideas





Targeted Workshops

These were workshops to gather voices from groups that may have more barriers to participating.

- Mahu Vision (after school programme for mainly Pasifika families)
- Inclusive Rodney (disabled people and their families)
- Springboard (alt education youth)
- Women's Centre (Young mums group)



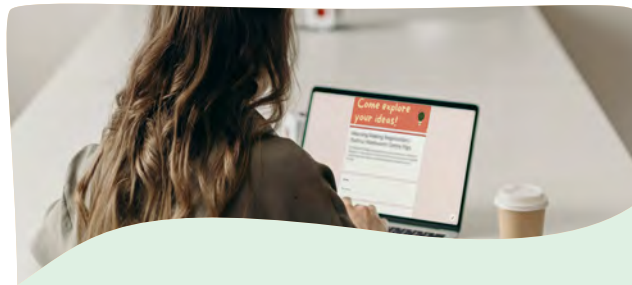
Workshop in a Box

A town planning board game was created as a fun and interactive way to contribute ideas and feedback into the plan. People picked up a box from Warkworth Library and returned it for the next person, family or group.



Wish Boxes

Three wish boxes were dotted around town for people to drop in their wishes for Puhinui Warkworth. There was also an online wish box.



Online Survey

An online survey was used to reach people who might not come to an in-person event. This was also targeted to the 25-35 age bracket who we identified as hard to reach.



Festival of ideas

Working closely with the Warkworth Library, a Festival of Ideas was created where local speakers were invited to help build on existing knowledge in the community around urban design to support the future thinking of what Puhinui Warkworth town centre could look like. There was facepainting for the kids, live music and interactive conversations.

Community Voice in numbers



39

Online surveys filled out

60

People involved in targeted workshops

80

Students from Te Kura o Puhinui participated in the Workshop in a box

50+

People participated in a Workshop in a Box game with their families, community organisations or groups

22

Wishes were dropped in a box or online

30+

People came to the meaning making event

120

People attended and participating in the Testing sessions

40

People from the community shared their thoughts at the Festival of Ideas



**How a community-led
brief was created for the
urban design team**





Meaning Making event

The meaning making event held at the Masonic Hall brought together people who had participated in all the other engagements to start to look at the main themes that had come from all the raw data.

Testing—bringing ideas to life in the community

Two days of guided and self-guided walks through the different destinations in the centre plan and imagining what it could look like in the future with artist impression drawings, and a map. These were based on the urban designers response to the community brief. This allowed for people to look at some of their ideas and get a feel for what things could look like in different destinations around the community.

People provided feedback in an interactive way. The Masonic Hall was also set up for a static walk through. Over 100 people came through over the two days from diverse communities in Puhinui Warkworth.

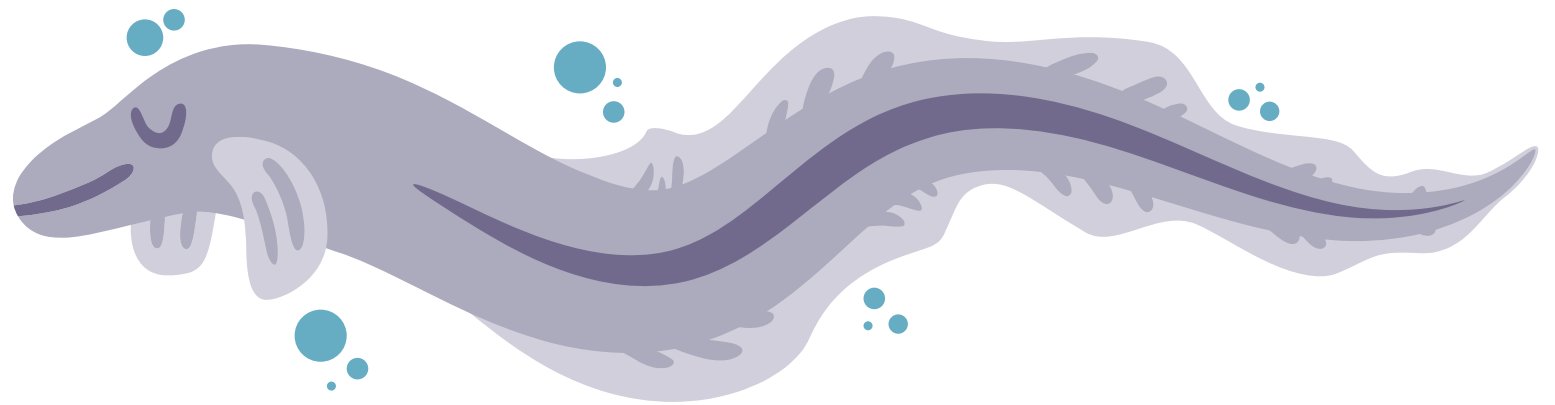


We were joined by a graphic facilitator who recorded peoples feedback, and considerations around the future of Puhinui Warkworth to form a community brief for the urban designers.



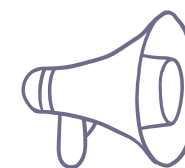


Testing images



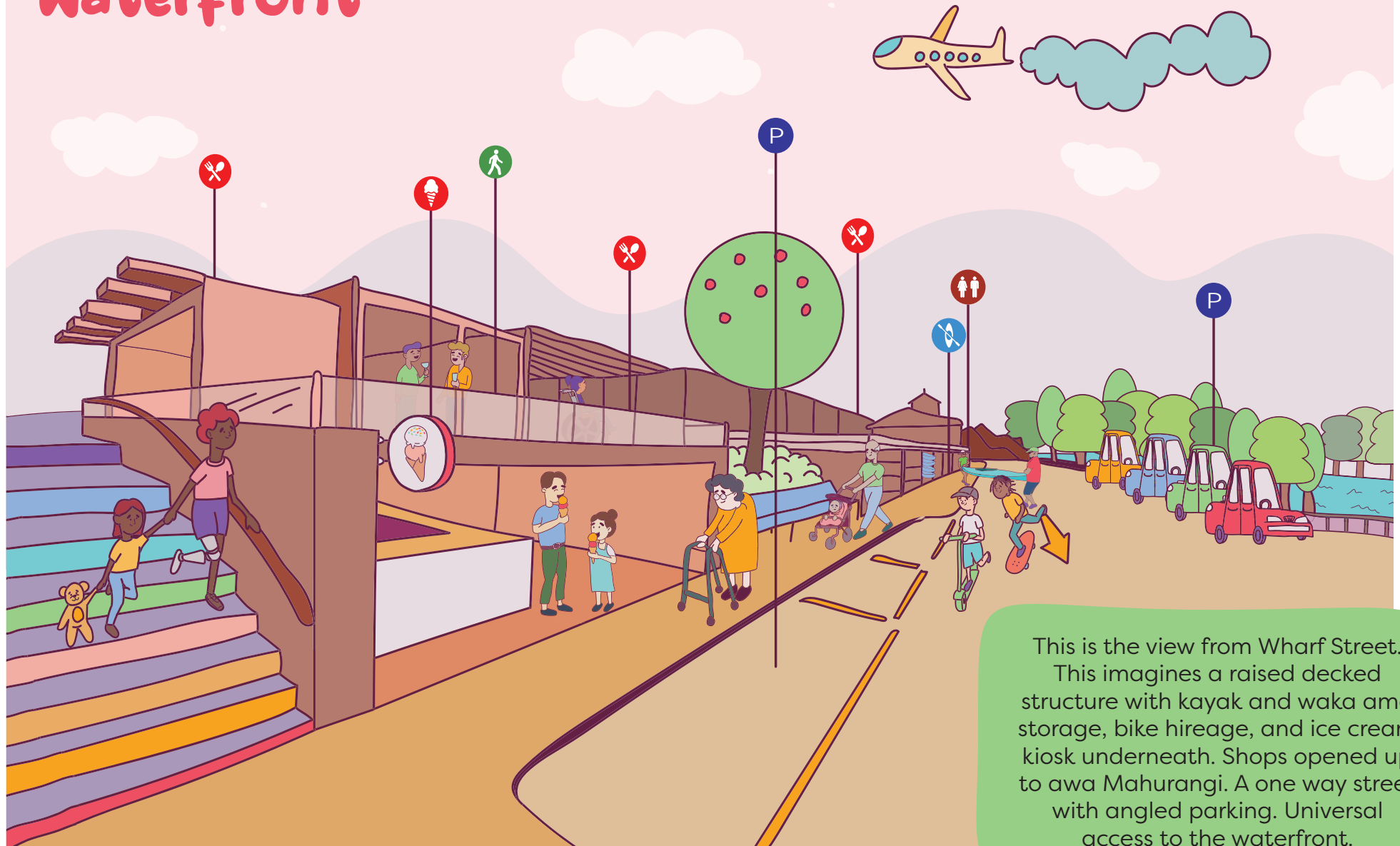


These images were created to assist with imagining what the different destinations in the centre plan to test ideas could look like. Note: these are not final plans.



Read on if you want more details around the themes created from the community conversations.

Waterfront



This is the view from Wharf Street. This imagines a raised deck structure with kayak and waka ama storage, bike hireage, and ice cream kiosk underneath. Shops opened up to awa Mahurangi. A one way street with angled parking. Universal access to the waterfront.

Market car park / Village green / Lucy Moore Park



This imagines the carpark remaining but a space that can be used for a regular farmers/ night market. The Village Green remains an open grassed area with the addition of large covered eating areas. An accessible walk and cycle pathway all the way to Lucy Moore is widened so vehicles can deliver equipment for events. A fast and slow path comes does the hill for scooters and bikes.

Plaza

Imagine cycle way extends all the way down Neville to the waterfront. A splash pad in summer and a space for markets. Sheltered seating area and an arts centre. Carparks blocking view of the river removed (mobility for events and bike parking added). Some toilets relocated.



Themes



Theme: Awa Mahurangi is the centre of the town

What people said

Awa Mahurangi is the heart of the town and the town should be re-orientated towards it.

There needed to be a focus on the health and well-being of awa Mahurangi.

Awa Mahurangi was a place for transportation, once again it should be a place for transportation.

Making the river safe to swim and do activities in and around it.

A space to educate people about Awa Mahurangi—its history and about sustainability.

AWA MAHURANGI

is the pulsing heart
of the town, the
town should be
re-orientated towards it.

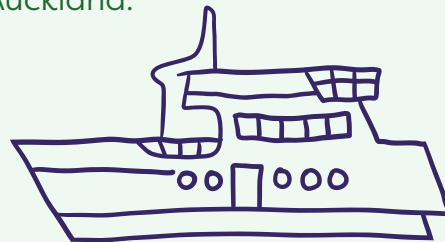


Ideas

- Boat and kayaks hire
- Waka ama
- Open up shops at the back to face the river
- Interactive art along the river
- Education centre

Future thinking

Electric ferry from Puhinui
Warkworth to Tāmaki Makaurau
Auckland.



**"Our river has life in it and if
we don't protecting it, we will
destroy the life"**

(student at Te Kura o Puhinui)

**"The river is often referred to
as Warkworth's taonga and this
is true. The river was once the
main form of transport to
Warkworth."**

Theme: Accessible Pathways to getting around town

What people said

Cycle, walk, wheel and public transport options that connect up the town and its surrounding areas.

Existing pathways need to be made accessible including increasing ramps and pedestrian crossings.

Many people in the community wanted to see the pathway extend around to the Cement Works. This was expressed as something people had wanted to happen for a long time.

People wanted more connected cycleways and walking paths around Puhinui Warkworth town centre, awa Mahurangi and to surrounding areas.

Safer crossings.

More pedestrian only spaces with trees, seating and lighting at night.

ACCESSIBLE PATHWAYS

to getting around town:
cycle, walk, wheel &
public transport options
connect up the town &
its surrounding areas



"The beautiful places we already have joined together by longer walks."

Ideas

- Cycle pathways all around town and to surrounding areas
- Electric scooters and bikes for hire
- One way system through town and larger footpaths
- Park and ride with a shuttle bus to take people around the town centre

Future thinking

A fleet of electric shuttle buses that take people around Puhinui Warkworth and surrounding beaches.

Pedestrian only streets.



"I wish that there was only one road and a few buses that go around and pick up kids in the morning and take them to school and take the adults to work and the buses are electric and there are no cars allowed on the road."

(Te Kura o Puhinui)

Theme: Public facilities and services that foster connection and community wellbeing.

What people said

People wanted community facilities and spaces which fostered intergenerational and intra-generational connection. In particular young people wanted spaces to connect to each other and to address boredom.

There are already some incredible services in Puhinui Warkworth with special mention of Homebuilders, Women's Centre and the Library.

The library was identified as a key space for social connection but that it was not large enough. People wanted it expanded and connected to a community centre.

Ideas

- Bigger and better skate park
- Larger playground and more play equipment for older kids
- Expanding the library

Future thinking

- | | |
|------------------------------|--------------------|
| A multi-use community centre | Community cinema |
| A swimming pool | Indoor youth space |

PUBLIC FACILITIES
& SERVICES

that foster inter-
generational (& intra-
generational) connection
& community wellbeing



"The wasted area of field next to the mini skate ramp on Baxter street would become a proper skate bowl with an adjoining concrete perimeter for bikes and scooters surrounding a nature playground like the one in Kaukapakapa. The centre feature would be a ship to pay tribute to the Jane Gifford. Māori heritage and themes to be incorporated here."

"A community centre would encourage more intergenerational socialising."

Theme: More public spaces to eat, meet and connect

What people said

People wanted shaded and covered public spaces where you can have birthday parties, meet up with people, and where you can bring your own food (doesn't cost to hang out).

People wanted the areas by the river to be expanded, car parks reduced and more spaces to hang out and meet up.

Ideas

- A town square/ piazza
- A community stage in Lucy Moore park
- Large covered seating areas.
- Regular markets (farmers and night markets.)
- A fale or Manaeba—Kiribati meeting house
- Public games e.g. chess board to encourage connection
- BBQ, tables and stage at the Cement Works
- Outdoor exercise equipment

Future thinking

- Indoor food court/ shared eating space.

"If there was more a precinct that attracts people to it, maybe like a central 'piazza' if you will with views to the river and protected from weather and good landscaping, where people can meet up, grab a wine, lunch or dinner and maybe watch a busker or entertainer, that'd be perfect!"

MORE PUBLIC SPACES
to eat, meet & connect
by the river & in
the parks.



"I think the car park by the river is such a waste of potentially usable space. There could be more done to develop this special space. It could be a shared and versatile space for gathering - dancing, playing games, communal space."

"Places to hang out that you don't have to pay for with shade and cover."

Theme: A town with a nightlife

What people said

People wanted the town to draw people in at night. This included more lighting, activities and events, and places to connect at night.

People wanted to be able to get around town at night safely including having the town well lit.

Ideas

- Night markets were a popular idea—food stalls, buskers and something for all ages
- A night shuttle bus that could take people home after a night out
- Fairy lights and lighting around trees so that the town and along the river is alive at night and safer to walk and cycle around

Future thinking

A small nightclub for dancing—beyond having bars, people suggested having a dance hall or a place to dance and sing that had a more community vibe.



Theme: Sustainable and circular economy

What people said:

Places to grow food and trees, places to share skills.

People talked about wanting Puhinui Warkworth to be known as a sustainable town with renewable energy, food growing and sustainable practices embedded in everyday life.

Op-shops in Puhinui Warkworth are great, making these a focus point.

SUSTAINABLE &
CIRCULAR ECONOMY:

Places to grow food &
trees, places to share
skills



Ideas

- Community gardens
- Food forests
- Community native tree nursery
- Spaces where excess food can be shared for free
- Community compost and recycling centre
- Repair cafes

"Plant a variety fruit trees
and community gardens
that are free for the
community to access"

"Community food gardens
and forests so people can
grab apples and bananas when
they're hungry"

(student, Te Kura o Puhinui)

Ngāti Manuhiri Aspirations

Ngāti Manuhiri have a vision for Puhinui Warkworth which extends beyond the bounds of a town centre plan—looking forward hundreds of years into the future, and back hundreds of years to a time before the town centre was built. Puhinui should be a space where Ngāti Manuhiri can be Ngāti Manuhiri—see themselves reflected in Puhinui and have pathways to return to their whenua.



Some aspirations and ideas that the Puhinui Warkworth Centre Plan could do as stepping stones towards these futures are:

- Centering the awa—its wellbeing, and all the connecting lungs.
- Create the infrastructure needed for waka ama to thrive on awa Mahurangi once again. This includes proper storage, but also places where waka ama can be launched from that reflect Ngāti Manuhiri and the histories of waka landings in the area.
- Naming new infrastructure with Puhinui e.g. Puhinui playground, Puhinui intersection, Puhinui cycleway. This is a way of starting to embed the name of the place into all parts of the town centre—to make the name more visible to people who live, work and visit Puhinui.
- Upgrading signage that represents Ngāti Manuhiri e.g. sign by the awa that felt rushed.
- More physical space in the town centre for Ngāti Manuhiri to do their mahi. There has been an idea floated around an awa education centre.



COMMUNITY
THINK

communitythink.nz

cissy@communitythink.nz 021964 884

  communitythink  community_think

