

What are we doing?

A kauri health survey – Summer 2025/26

In Summer 2025/26, Auckland Council, working with the Department of Conservation and Ngāti Rehua Ngātiwai Ki Aotea Trust, will carry out a kauri health survey across Aotea.

What the survey involves

- Mapping the kauri population using aerial imagery and AI technology
- Assessing the health of 540 randomly selected kauri trees
- Taking small soil samples to test for *Phytophthora agathidicida*

The survey will take place across:

- Auckland Council regional parkland (such as Glenfern Regional Park)
- Public conservation land (Aotea Conservation Park)
- Some private properties that border these areas

Why this matters

The information we collect will help us:

- Understand the spread of kauri dieback on Aotea
- Identify areas where kauri are still healthy
- Improve how kauri forests are managed and protected in the future

How you can help

Access to private property

All properties included in the survey have already been contacted and given permission for access. Only these approved private properties will be sampled for the survey.

Our field teams will:

- Treat your land with care and respect
- Follow strict hygiene protocols to prevent the spread of disease
- Focus only on kauri health assessments
- Work around any health and safety concerns you identify
- Your support helps us build a complete picture of kauri health across the island.

What happens next

If you agreed to take part, our field delivery team will contact you to arrange timing and access details.

To respond or ask questions:

Phone: 09 301 0101

Email: aoteakaurisurvey@aucklandcouncil.govt.nz

Website: aucklandcouncil.govt.nz



Top of a Kauri tree



Aotea Kauri Survey

Protecting our environment

January 2026



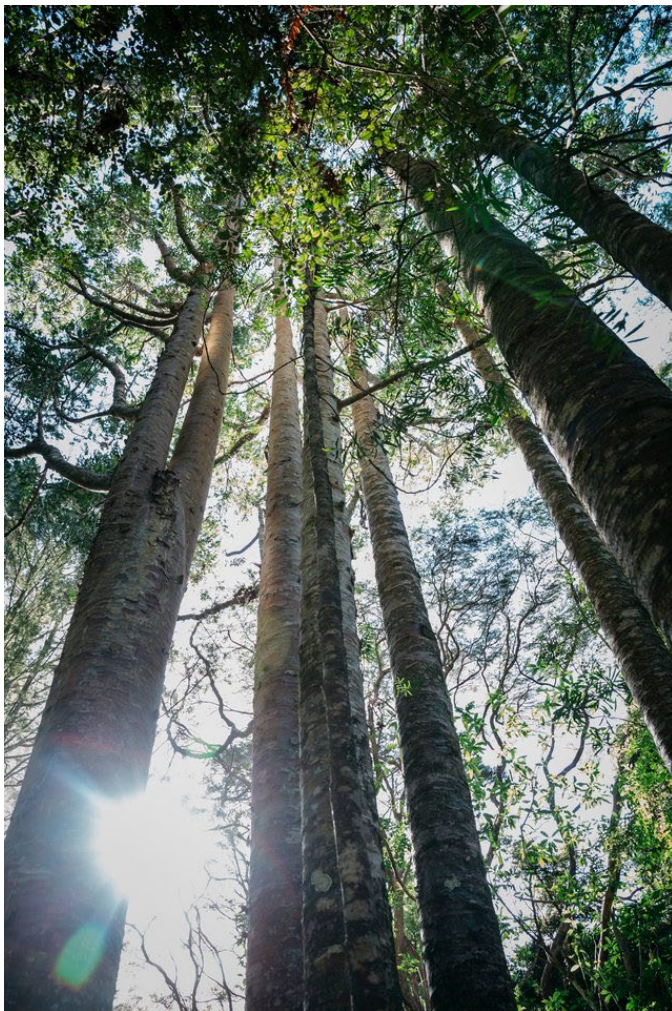
About the project

Protecting our kauri on Aotea

We need your help to protect our kauri

Kauri are one of Aotearoa New Zealand's most iconic and culturally significant trees. On Aotea Great Barrier Island, they form part of ancient forest ecosystems that support many native plants and animals.

Today, kauri are under threat from kauri dieback disease. Understanding where the disease is present – and where it is not – is essential to protecting these taonga for future generations.



Kauri trees

What is kauri dieback?

A serious disease affecting kauri

Kauri dieback is caused by a microscopic plant pathogen called *Phytophthora agathidicida*. It spreads through soil and water and can infect kauri trees of all ages.

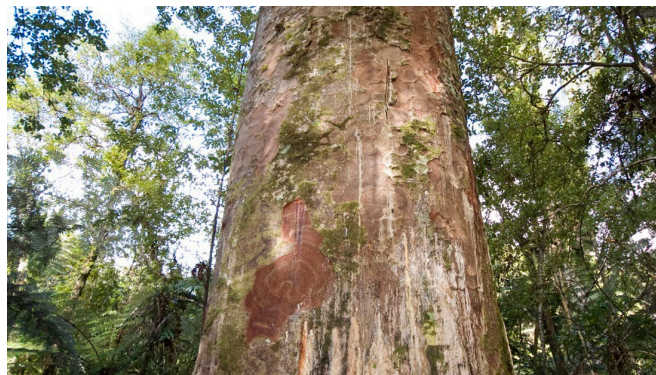
Common symptoms include:

- Yellowing leaves
- Thinning canopy
- Dead branches
- Bleeding gum at the base of the trunk
- Once a tree is infected, kauri dieback is usually fatal.

Kauri dieback on Aotea

Kauri dieback was first detected on Aotea in the 1970s. While surveys have been carried out over time, the full extent of the disease on the island is still unknown. Current information suggests the disease is patchy, and it has not been found in some areas, including Te Paparahi (the north of the island).

Aotea is currently under a Controlled Area Notice to help protect kauri and slow the spread of *Phytophthora agathidicida*.



Phytophthora agathidicida disease



Why your support matters

If you own land with kauri, your involvement makes a real difference.

- Kauri dieback can spread through soil on shoes, tools and vehicles – knowing where it is helps reduce risk.
- The survey helps identify **healthy kauri** as well as areas already affected.
- Results will guide future protection, track hygiene measures and support long-term management of kauri on Aotea.
- Taking part does **not** place obligations on you – it simply helps build an island-wide picture.
- Your support helps protect kauri on your land and across the wider community.



Youth learning about Kauri

