

BOATING IN THE HAURAKI GULF

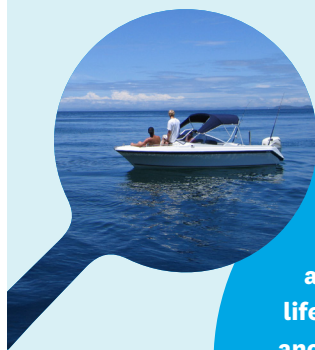
Information about

New exotic caulerpa rules
New high protection areas
Pest free islands

December 2025



MAKE SURE YOU ARE WELL-INFORMED BEFORE YOU HEAD OUT ON THE WATER.



Anchor to minimise the adverse effects on aquatic life – as best as you can, avoid anchoring on reefs, black coral or seagrass habitats and don't let your anchor drag. Use your sounder to check before you drop your anchor.

- 1** There are restrictions in place to help stop the spread of the seaweed exotic caulerpa. Use this QR code or go to biosecurity.govt.nz/caulerpa to see the rules.



- 2** New high protection areas and seafloor areas were introduced in the Hauraki Gulf in October 2025. Fishing and trawling restrictions apply. Learn more on doc.govt.nz or use this QR code.



- 3** Learn about keeping our Hauraki Gulf islands pest free, and protecting the Hauraki Gulf, including 'check clean close', and rules for pets at ourauckland.nz/haurakigulf.



AVOID SPREADING EXOTIC CAULERPA SEAWEED

- When out at sea, before moving check your anchor, chain and fishing and dive gear for any seaweed. If you have an automatic retrieval system, still look out for any attached pieces of seaweed.
- If you find any seaweed – remove it, bag or contain it securely so it can't get back into the water, and take it ashore for disposal in a rubbish bin.
- If you can't do this – put it back into the waters it came from.
- Understand where the four Controlled Areas are in Hauraki Gulf and what restrictions apply.

If you find exotic caulerpa outside known areas, report it:



TAKE A PHOTO



RECORD YOUR LOCATION



CALL 0800 80 88 66



OR VISIT report.mpi.govt.nz

HAURAKI GULF / TIKAPA MOANA MARINE PARK

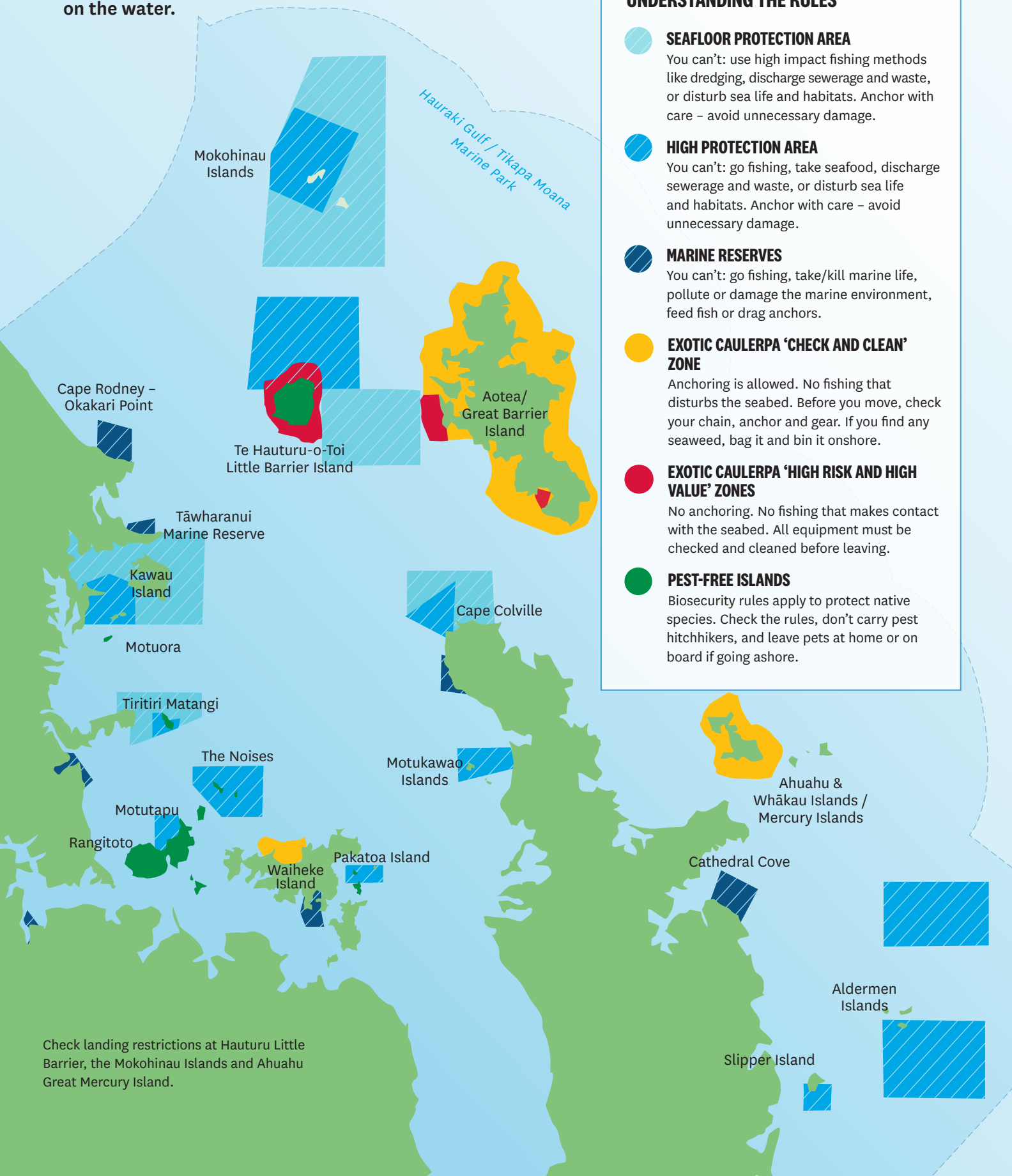


Department of
Conservation
Te Papa Atawhai



Biosecurity New Zealand
Ministry for Primary Industries
Manatū Ahu Matua

This map is a quick-reference guide to the new exotic caulerpa rules, new high protection areas, and pest free islands to help you be well informed before you head out on the water.



UNDERSTANDING THE RULES



SEAFLOOR PROTECTION AREA

You can't: use high impact fishing methods like dredging, discharge sewerage and waste, or disturb sea life and habitats. Anchor with care – avoid unnecessary damage.



HIGH PROTECTION AREA

You can't: go fishing, take seafood, discharge sewerage and waste, or disturb sea life and habitats. Anchor with care – avoid unnecessary damage.



MARINE RESERVES

You can't: go fishing, take/kill marine life, pollute or damage the marine environment, feed fish or drag anchors.



EXOTIC CAULERPA 'CHECK AND CLEAN' ZONE

Anchoring is allowed. No fishing that disturbs the seabed. Before you move, check your chain, anchor and gear. If you find any seaweed, bag it and bin it onshore.



EXOTIC CAULERPA 'HIGH RISK AND HIGH VALUE' ZONES

No anchoring. No fishing that makes contact with the seabed. All equipment must be checked and cleaned before leaving.



PEST-FREE ISLANDS

Biosecurity rules apply to protect native species. Check the rules, don't carry pest hitchhikers, and leave pets at home or on board if going ashore.

Check landing restrictions at Hauturu Little Barrier, the Mokohinau Islands and Ahuahu Great Mercury Island.