

**TREE REMOVAL ALONG STATE HIGHWAY 16 (Kaipara Coast Highway) as a result of the proposed development at 2127 Kaipara Coast Highway.**

The trees listed below are to be removed as part of the proposed development of 2127 Kaipara Coast Highway.

The purpose of this removal is for the widening of the road to provide for turning bays into a new access onto the state highway.

The new access is required for safety reasons given that the sight lines of the existing farm access were not deemed appropriate (by a traffic engineer) for an increased number of vehicle movements.

The trees are predominantly native, the majority of them mature kanuka with some understorey vegetation. These trees are likely to have been self seeded. Included in the mix are pine trees and wattle, with one Yunnan Poplar. With the exception of the poplar the other exotic trees are weed species that should ideally be eradicated.

There is only one native canopy tree (a totara that stands approximate 6 metres tall) that is over four metres that is to be removed. The rest of the native vegetation includes either colonising species (kanuka, mahoe, mapou) or large shrubs and cabbage trees (Ti kouka).

Kanuka trees are a first generation/colonising plant species that establishes first in restoration areas, acting as a nursery for other slower growing species and then dying as a result of being shaded. They do not have the long term value associated with some of the larger canopy trees such as pohutukawa, totara, rimu or puriri.

The removal of the trees will change the nature of this stretch of road by removing the sense of enclosure currently experienced, to one that is more open, with views through to the open pasture of 2127 Kaipara Coast Highway. This would still be in keeping with the character of the surrounding rural landscape.

It is understood that it would not be possible to widen this stretch of road without removing these trees.

The removal of some of these tall trees could have positive effects on the long term safety of users of this state highway given that many of the trees are located in close proximity to this 100km / hour road and tree fall can be problematic. This is particularly applicable to pine trees.

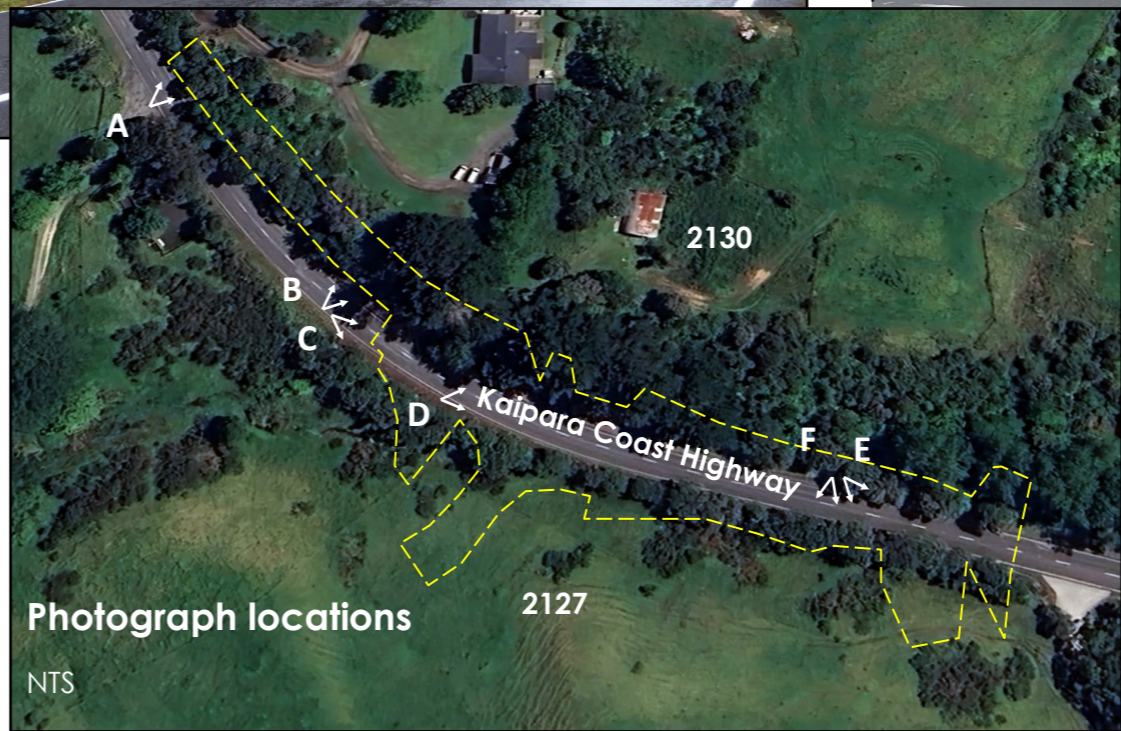
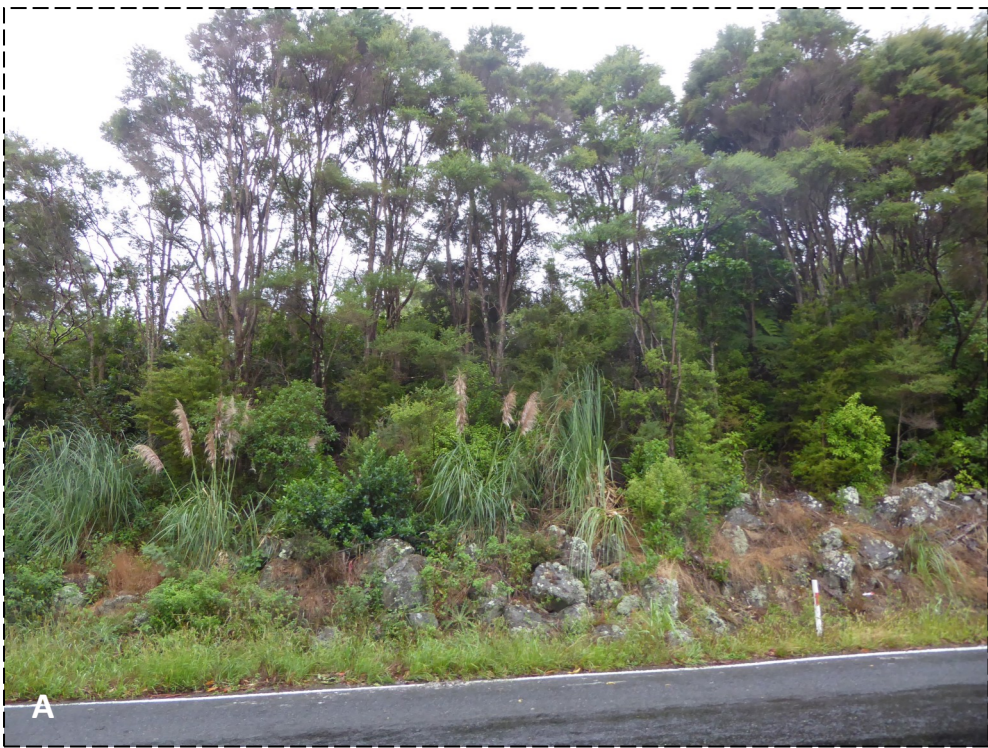
In the large storms of 2023 a number of trees blew down along the stretch of state highway within one kilometre of the subject land and had to be removed off the road.

Given the safety issues with trees along the state highway it is not uncommon to see arborist teams removing trees along the state highway in close proximity to the road, such as those included in the proposal.

The removal of the pines and wattle trees is considered to be at least part mitigation for the removal of the native trees.

If the Council arborist determines that mitigation is required for the removal of these trees along the state highway some restoration of low growing native vegetation could be included as conditions of consent for the works.





Images of vegetation adjacent to the Kaipara Coast Highway in and around the area in which road widening is proposed for the development at 2127 Kaipara Coast Highway

14 March 2024