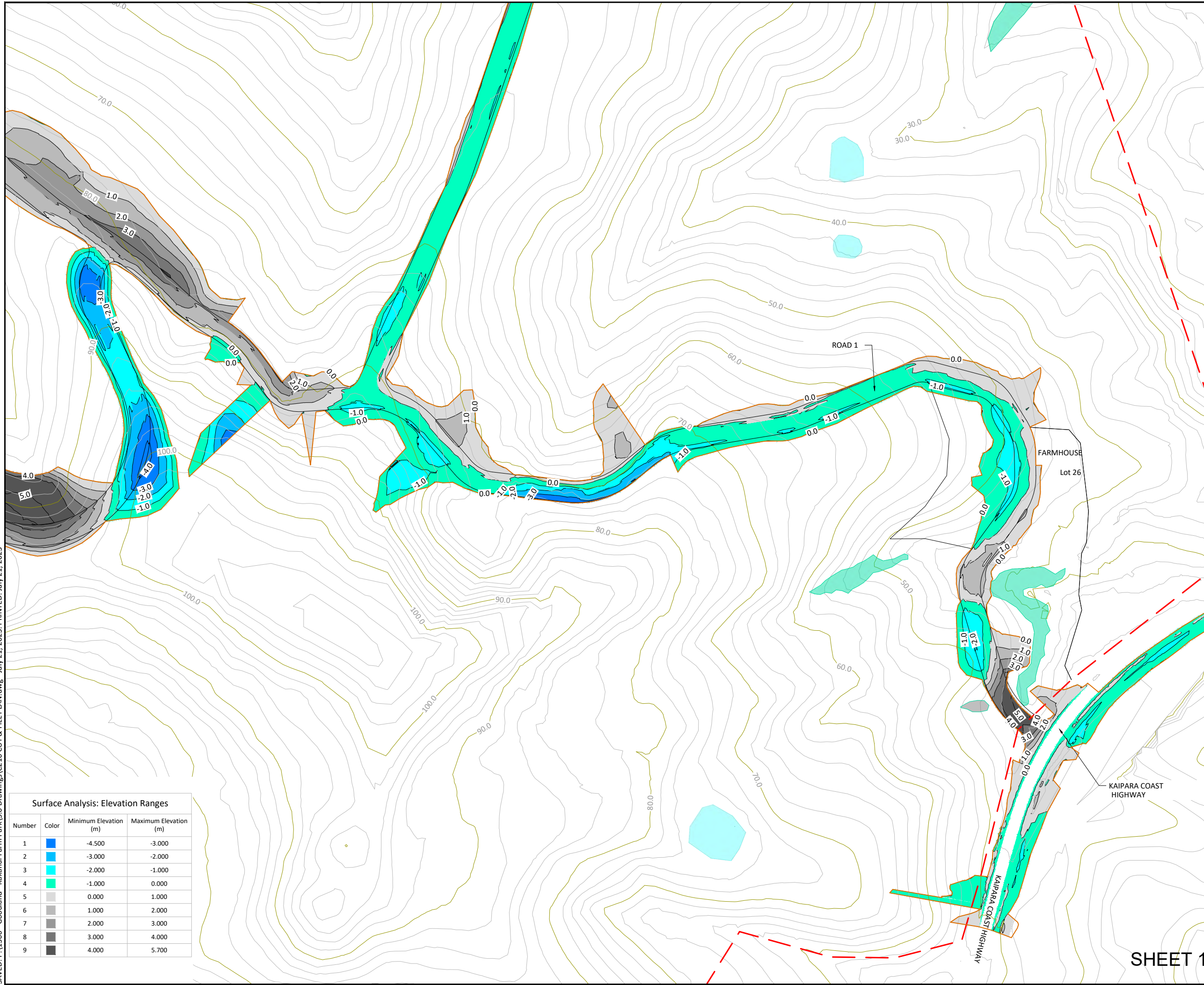


SAVED: P:\1366 - Goodland - Kakanui Farm Park\5.0 Drawings\C210 CUT & FILL PLAN.dwg - July 21, 2023. PRINTED: July 21, 2023



**LEGEND**

- SITE BOUNDARY
- EARTHWORKS EXTENT
- 50.0  
--- 52.0 EXISTING CONTOURS
- PROPOSED LOT AND ROAD BOUNDARIES
- PROPOSED RETAINING WALL
- EXISTING NATURAL WETLAND
- EXISTING MAN-MADE WETLAND

**NOTES:**

1. CUT & FILL ELEVATION RANGES ARE FROM EXISTING SURFACE TO FINISHED GROUND LEVELS.
2. A SUMMARY OF THE ADJUSTED VOLUME IS AS FOLLOWS:
  - TOPSOIL STRIP = 22,385m<sup>3</sup>
  - TOPSOIL RESPREAD = 17,000m<sup>3</sup>
  - CUT TO FILL (CLAY/SILT) = 49,670m<sup>3</sup>
  - IMPORT CLAY FILL = 410m<sup>3</sup>
3. VOLUME SUMMARY ASSUMES THE FOLLOWING:
  - TOPSOIL STRIP: -0.25m
  - TOPSOIL RESPREAD: 0.25m
  - ROAD/ACCESSWAY SUBGRADE: -0.38m
  - COMPACTION FACTOR = 15%
4. SUMMARIES DO NOT INCLUDE UNSUITABLE MATERIALS/PEAT.

**CONSENT ISSUE**

REVISION	CHANGES	CHECKED	DATE
B	INFORMAL S92 RESPONSE	ZY	21/07/23
A	ORIGINAL ISSUE	VC	24/11/21

COPYRIGHT: This document and the copyright in this document remain the property of Crang Consulting Ltd. The contents of this document may not be reproduced either in whole or in part by any means whatsoever without the prior written consent of Crang Consulting.

**CRANG CIVIL**  
CONSULTING ENGINEERS

PHONE +64 09 320 3325  
WEB www.crangcivil.co.nz  
ADDRESS 1016a Great South Road, Penrose, Auckland  
POST PO Box 42-089, Orakei, Auckland 1745, NZ

CLIENT  
**ABIB (OMARU) LTD**

PROJECT  
**GOODLAND COASTAL FARM**

TITLE  
**CUT & FILL LAYOUT PLAN SHEET 1**

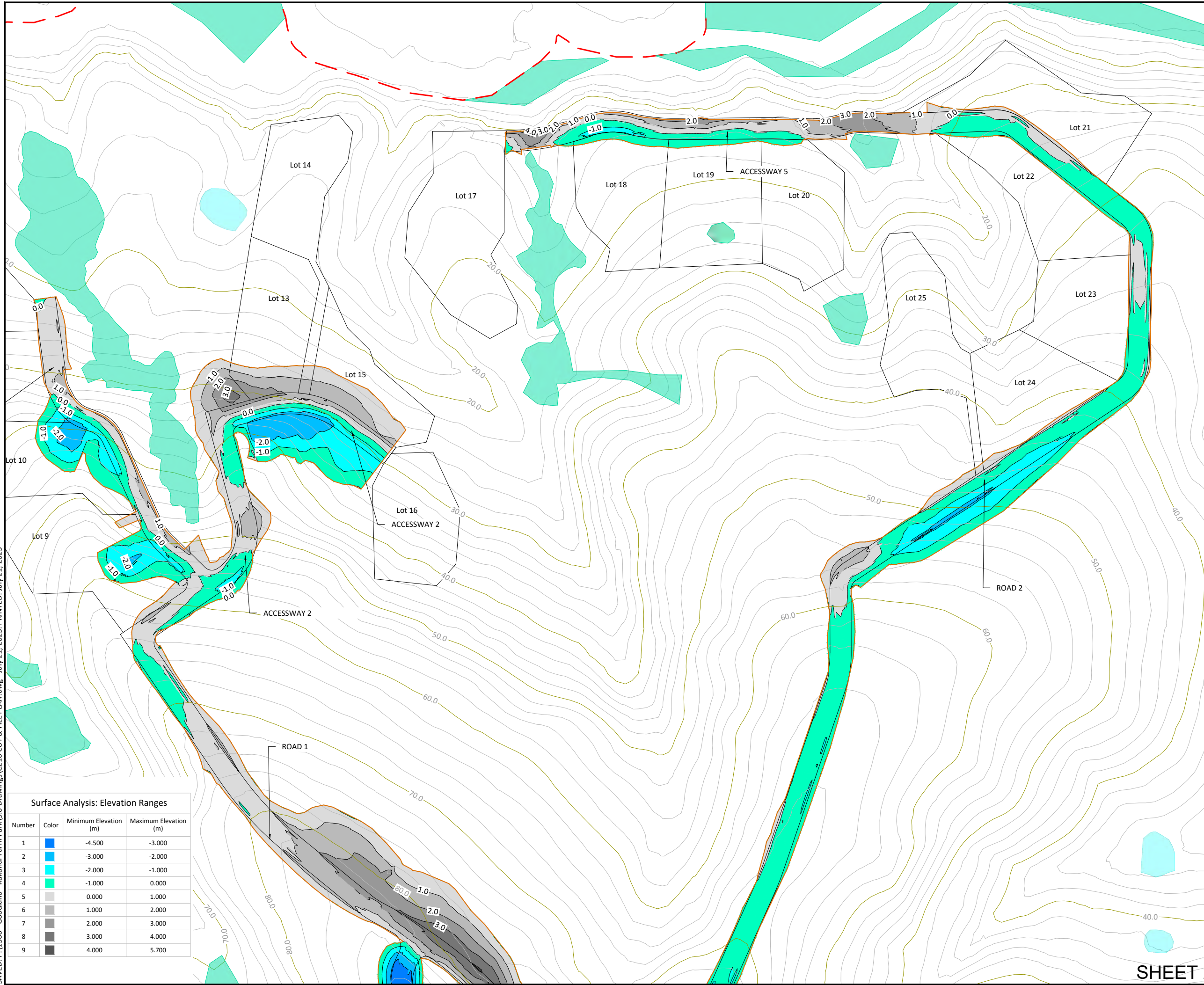
DRAWN	MD	SCALE	A1 1:1000
DESIGNED	VC	SCALE	A3 1:2000
PROJECT No	1366	DRAWING No	C211
REVISION	B		

**Surface Analysis: Elevation Ranges**

Number	Color	Minimum Elevation (m)	Maximum Elevation (m)
1	■	-4.500	-3.000
2	■	-3.000	-2.000
3	■	-2.000	-1.000
4	■	-1.000	0.000
5	■	0.000	1.000
6	■	1.000	2.000
7	■	2.000	3.000
8	■	3.000	4.000
9	■	4.000	5.700

**SHEET 1**

SAVED: P:\1366 - Goodland Farm Park\5.0 Drawings\C210 CUT & FILL PLAN.dwg - July 21, 2023. PRINTED: July 21, 2023



**LEGEND**

- SITE BOUNDARY
- EARTHWORKS EXTENT
- EXISTING CONTOURS
- PROPOSED LOT AND ROAD BOUNDARIES
- PROPOSED RETAINING WALL
- EXISTING NATURAL WETLAND
- EXISTING MAN-MADE WETLAND

**NOTES:**

1. CUT & FILL ELEVATION RANGES ARE FROM EXISTING SURFACE TO FINISHED GROUND LEVELS.
2. A SUMMARY OF THE ADJUSTED VOLUME IS AS FOLLOWS:
  - TOPSOIL STRIP = 22,385m<sup>3</sup>
  - TOPSOIL RESPREAD = 17,000m<sup>3</sup>
  - CUT TO FILL (CLAY/SILT) = 49,670m<sup>3</sup>
  - IMPORT CLAY FILL = 410m<sup>3</sup>
3. VOLUME SUMMARY ASSUMES THE FOLLOWING:
  - TOPSOIL STRIP: -0.25m
  - TOPSOIL RESPREAD: 0.25m
  - ROAD/ACCESSWAY SUBGRADE: -0.38m
  - COMPACTION FACTOR = 15%
4. SUMMARIES DO NOT INCLUDE UNSUITABLE MATERIALS/PEAT.

**CONSENT ISSUE**

REVISION	CHANGES	CHECKED	DATE
B	INFORMAL S92 RESPONSE	ZY	21/07/23
A	ORIGINAL ISSUE	VC	24/11/21

COPYRIGHT:  
This document and the copyright in this document remain the property of Crang Consulting Ltd. The contents of this document may not be reproduced either in whole or in part by any means whatsoever without the prior written consent of Crang Consulting.

**CRANG CIVIL**  
CONSULTING ENGINEERS

PHONE +64 09 320 3325  
WEB www.crangcivil.co.nz  
ADDRESS 1016a Great South Road, Penrose, Auckland  
POST PO Box 42-089, Orakei, Auckland 1745, NZ

CLIENT  
**ABIB (OMARU) LTD**

PROJECT  
**GOODLAND COASTAL FARM**

TITLE  
**CUT & FILL LAYOUT PLAN SHEET 2**

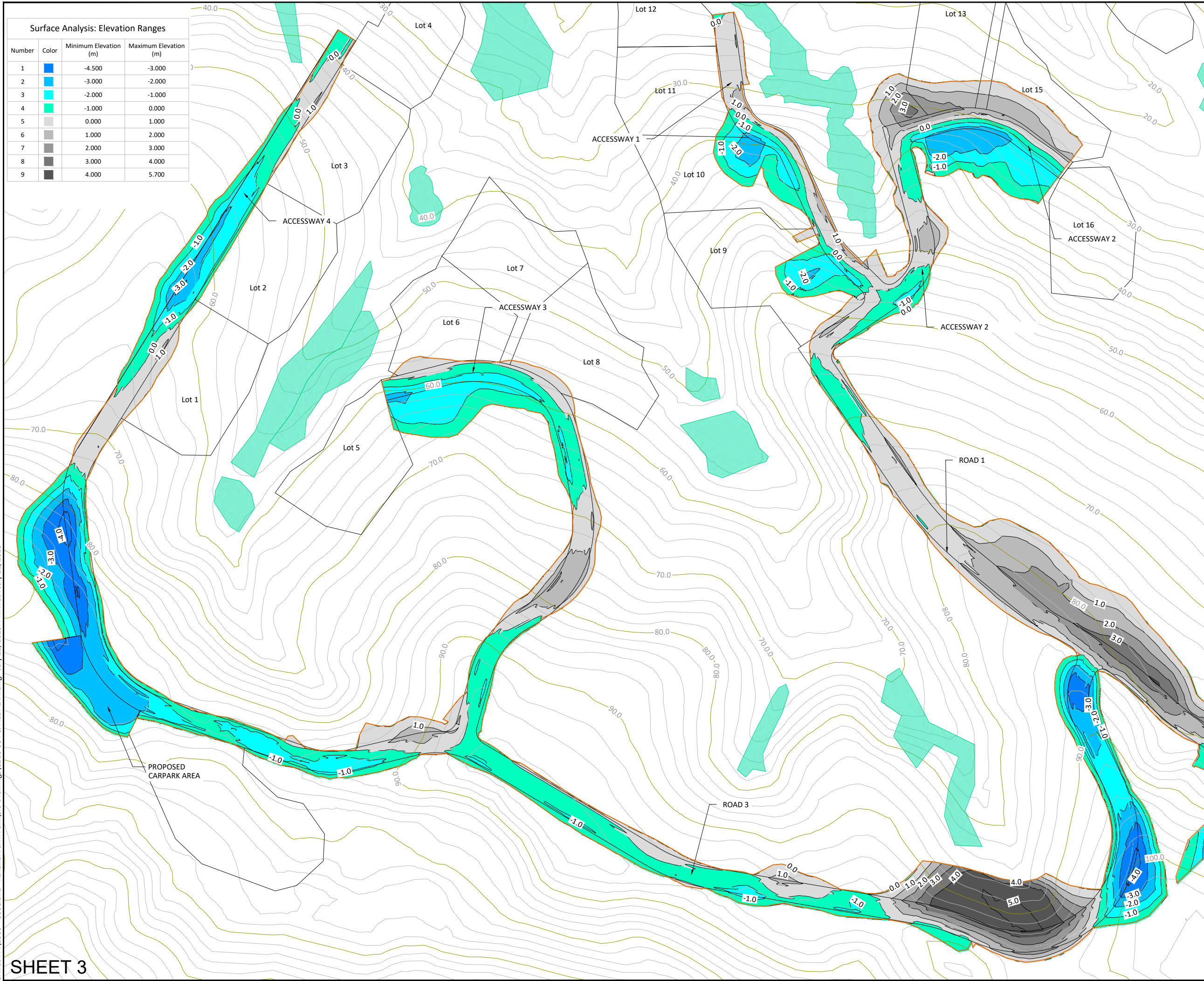
DRAWN	MD	SCALE	A1 1:1000
DESIGNED	VC		A3 1:2000
PROJECT No	1366	DRAWING No	C212
		REVISION	B

**Surface Analysis: Elevation Ranges**

Number	Color	Minimum Elevation (m)	Maximum Elevation (m)
1		-4.500	-3.000
2		-3.000	-2.000
3		-2.000	-1.000
4		-1.000	0.000
5		0.000	1.000
6		1.000	2.000
7		2.000	3.000
8		3.000	4.000
9		4.000	5.700

**SHEET 2**

SAVED: P:\1366 - Goodland - Kakanui Farm Park\5.0 Drawings\C210 CUT & FILL PLAN.dwg - July 21, 2023. PRINTED: July 21, 2023



**SHEET 3**

**Surface Analysis: Elevation Ranges**

Number	Color	Minimum Elevation (m)	Maximum Elevation (m)
1	Blue	-4.500	-3.000
2	Light Blue	-3.000	-2.000
3	Cyan	-2.000	-1.000
4	Light Green	-1.000	0.000
5	White	0.000	1.000
6	Light Grey	1.000	2.000
7	Medium Grey	2.000	3.000
8	Dark Grey	3.000	4.000
9	Black	4.000	5.700

**LEGEND**

- SITE BOUNDARY
- EARTHWORKS EXTENT
- 50.0
- 52.0
- EXISTING CONTOURS
- PROPOSED LOT AND ROAD BOUNDARIES
- PROPOSED RETAINING WALL
- █ EXISTING NATURAL WETLAND
- █ EXISTING MAN-MADE WETLAND

**NOTES:**

1. CUT & FILL ELEVATION RANGES ARE FROM EXISTING SURFACE TO FINISHED GROUND LEVELS.
2. A SUMMARY OF THE ADJUSTED VOLUME IS AS FOLLOWS:
  - TOPSOIL STRIP = 22,385m<sup>3</sup>
  - TOPSOIL RESPREAD = 17,000m<sup>3</sup>
  - CUT TO FILL (CLAY/SILT) = 49,670m<sup>3</sup>
  - IMPORT CLAY FILL = 410m<sup>3</sup>
3. VOLUME SUMMARY ASSUMES THE FOLLOWING:
  - TOPSOIL STRIP: -0.25m
  - TOPSOIL RESPREAD: 0.25m
  - ROAD/ACCESSWAY SUBGRADE: -0.38m
  - COMPACTION FACTOR = 15%
4. SUMMARIES DO NOT INCLUDE UNSUITABLE MATERIALS/PEAT.

**CONSENT ISSUE**

REVISION	CHANGES	CHECKED	DATE
C	INFORMAL S92 RESPONSE	ZY	21/07/23
B	ROAD 3 RE-ALIGN	VC	20/12/21
A	ORIGINAL ISSUE	VC	24/11/21

COPYRIGHT: This document and the copyright in this document remain the property of Crang Consulting Ltd. The contents of this document may not be reproduced either in whole or in part by any means whatsoever without the prior written consent of Crang Consulting.

**CRANG CIVIL**  
CONSULTING ENGINEERS

PHONE +64 09 320 3325  
 WEB www.crangcivil.co.nz  
 ADDRESS 1016a Great South Road, Penrose, Auckland  
 POST PO Box 42-089, Orakei, Auckland 1745, NZ

CLIENT	ABIB (OAMARU) LTD		
PROJECT	GOODLAND COASTAL FARM		
TITLE	CUT & FILL LAYOUT PLAN SHEET 3		
DRAWN	MD	SCALE	A1 1:1000
DESIGNED	VC	SCALE	A3 1:2000
PROJECT No	1366	DRAWING No	C213
		REVISION	C

SAVED: P:\1366 - Goodland - Kakanui Farm Park\5.0 Drawings\C220 EROSION & SEDIMENT CONTROL PLAN.dwg - July 21, 2023. PRINTED: July 21, 2023



Kakanui River

REFER TO C222 FOR DETAIL PLAN

REFER TO C223 FOR DETAIL PLAN

REFER TO C221 FOR DETAIL PLAN

**LEGEND**

- 60.0 PROPOSED CONTOURS
- 52.0 EXISTING CONTOURS
- 60.0 EARTHWORKS EXTENT
- 52.0 TREATMENT DEVICE CATCHMENT
- DWD EARTHWORKS EXTENT
- CWD EARTHWORKS EXTENT
-  STABILISED CONSTRUCTION ENTRANCE
-  DEB

**NOTES:**

1. ALL CLEAN WATER RUNOFF FROM UPSTREAM CATCHMENTS SHALL BE DIVERTED AWAY FROM THE WORKS AND TOWARDS STABILISED DRAINS TO PREVENT SURFACE EROSION.
2. EROSION AND SEDIMENT CONTROL PLANS SHALL COMPLY WITH THE "EROSION AND SEDIMENT CONTROL GUIDELINES FOR LAND DISTURBING ACTIVITIES" ALSO KNOWN AS GD05.
3. EROSION AND SEDIMENT CONTROL MEASURES SHALL BE IN PLACE AND FULLY OPERATIONAL PRIOR TO START OF EARTHWORKS. THE CONTRACTOR SHALL ARRANGE FOR AND ATTEND A PRELIMINARY SEDIMENT CONTROL MEETING ON-SITE WITH AC REPRESENTATIVE AND THE ENGINEER.
4. CONTRACTOR SHALL ENSURE THAT A COPY OF EROSION AND SEDIMENT CONTROL PLANS AVAILABLE ON SITE AT ALL TIMES AND THAT ALL SUB-CONTRACTORS AND PERSONNEL INVOLVED IN EARTHWORKS OR OTHER ACTIVITIES RELATED TO EROSION AND SEDIMENT CONTROL HAVE ACCESS TO THESE PLANS AND ARE FAMILIAR WITH THE MEASURES TO BE UNDERTAKEN.

**CONSENT ISSUE**

C	INFORMAL S92 RESPONSE	ZY	21/07/23
B	ROAD 3 RE-ALIGN	VC	20/12/21
A	ORIGINAL ISSUE	VC	24/11/21
REVISION	CHANGES	CHECKED	DATE

COPYRIGHT:  
This document and the copyright in this document remain the property of Crang Consulting Ltd. The contents of this document may not be reproduced either in whole or in part by any means whatsoever without the prior written consent of Crang Consulting.



PHONE +64 09 320 3325  
WEB www.crangcivil.co.nz  
ADDRESS 1016a Great South Road, Penrose, Auckland  
POST PO Box 42-089, Orakei, Auckland 1745, NZ

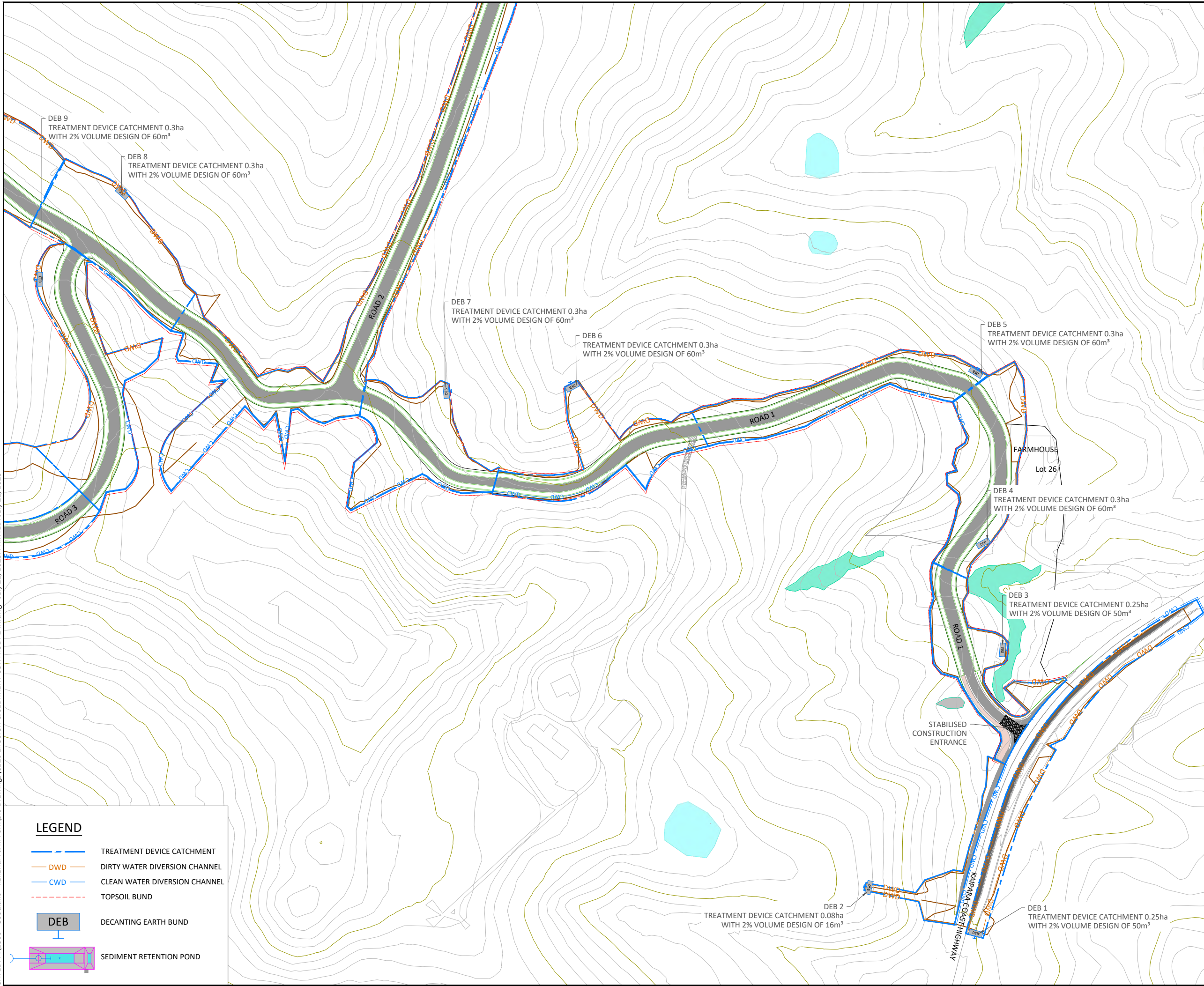
CLIENT  
**ABIB (OMARU) LTD**

PROJECT  
**GOODLAND COASTAL FARM**

TITLE  
**EROSION & SEDIMENT CONTROL OVERALL PLAN**

DRAWN	MD	SCALE	A1 1:2000
DESIGNED	VC	A3	1:4000
PROJECT No	DRAWING No	REVISION	
1366	C220	C	

SAVED: P:\1366 - Goodland Farm Park\5.0 Drawings\C220 EROSION & SEDIMENT CONTROL PLAN.dwg - July 21, 2023. PRINTED: July 21, 2023.



**LEGEND**

- 60.0 PROPOSED CONTOURS
- 52.0 EXISTING CONTOURS
- EARTHWORKS EXTENT
- NATURAL WETLAND
- MANMADE WETLAND

**NOTES:**

1. ALL CLEAN WATER RUNOFF FROM UPSTREAM CATCHMENTS SHALL BE DIVERTED AWAY FROM THE WORKS AND TOWARDS STABILIZED DRAINS TO PREVENT SURFACE EROSION.
2. EROSION AND SEDIMENT CONTROL PLANS SHALL COMPLY WITH THE "EROSION AND SEDIMENT CONTROL GUIDELINES FOR LAND DISTURBING ACTIVITIES" ALSO KNOWN AS GDOS.
3. EROSION AND SEDIMENT CONTROL MEASURES SHALL BE IN PLACE AND FULLY OPERATIONAL PRIOR TO START OF EARTHWORKS. THE CONTRACTOR SHALL ARRANGE FOR AND ATTEND A PRELIMINARY SEDIMENT CONTROL MEETING ON-SITE WITH AC REPRESENTATIVE AND THE ENGINEER.
4. CONTRACTOR SHALL ENSURE THAT A COPY OF EROSION AND SEDIMENT CONTROL PLANS AVAILABLE ON SITE AT ALL TIMES AND THAT ALL SUB-CONTRACTORS AND PERSONNEL INVOLVED IN EARTHWORKS OR OTHER ACTIVITIES RELATED TO EROSION AND SEDIMENT CONTROL HAVE ACCESS TO THESE PLANS AND ARE FAMILIAR WITH THE MEASURES TO BE UNDERTAKEN.

**CONSENT ISSUE**

REVISION	CHANGES	CHECKED	DATE
B	INFORMAL S92 RESPONSE	ZY	21/07/23
A	ORIGINAL ISSUE	VC	24/11/21

COPYRIGHT:  
This document and the copyright in this document remain the property of Crang Consulting Ltd. The contents of this document may not be reproduced either in whole or in part by any means whatsoever without the prior written consent of Crang Consulting.



PHONE +64 09 320 3225  
WEB www.crangcivil.co.nz  
ADDRESS 1016a Great South Road, Penrose, Auckland  
POST PO Box 42-089, Orakei, Auckland 1745, NZ

CLIENT  
**ABIB (OMARU) LTD**

PROJECT  
**GOODLAND COASTAL FARM**

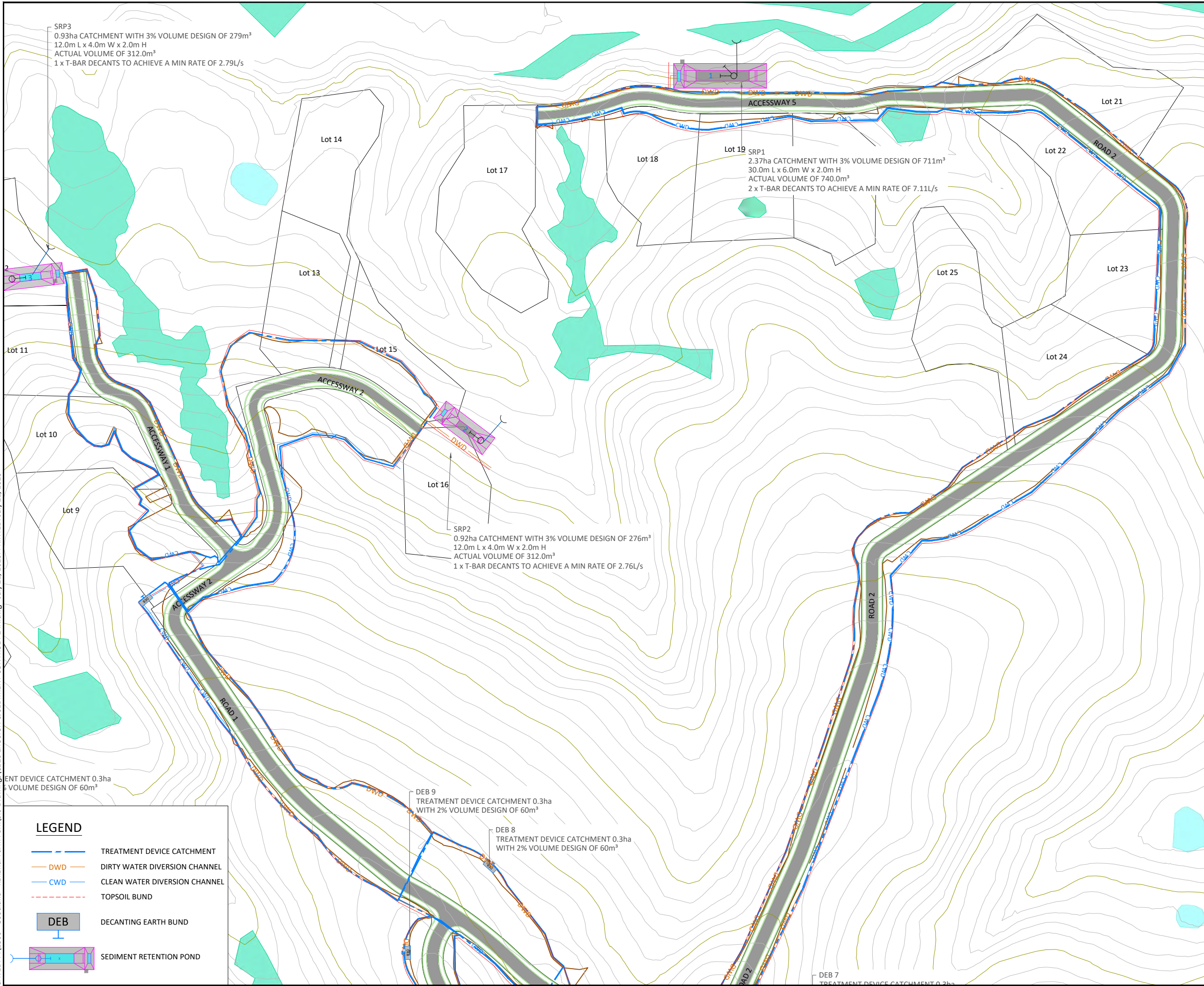
TITLE  
**EROSION & SEDIMENT CONTROL PLAN - SHEET 1**

DRAWN	MD	SCALE	A1 1:1000
DESIGNED	VC		A3 1:2000
PROJECT No	1366	DRAWING No	C221
		REVISION	B

**LEGEND**

- TREATMENT DEVICE CATCHMENT
- DWD DIRTY WATER DIVERSION CHANNEL
- CWD CLEAN WATER DIVERSION CHANNEL
- - - TOPSOIL BUND
- DEB DECANTING EARTH BUND
- SRP SEDIMENT RETENTION POND

SAVED: P:\1366 - Goodland - Kakanui Farm Park\5.0 Drawings\C220 EROSION & SEDIMENT CONTROL PLAN.dwg - July 21, 2023. PRINTED: July 21, 2023



SRP3  
0.93ha CATCHMENT WITH 3% VOLUME DESIGN OF 279m<sup>3</sup>  
12.0m L x 4.0m W x 2.0m H  
ACTUAL VOLUME OF 312.0m<sup>3</sup>  
1 x T-BAR DECANTS TO ACHIEVE A MIN RATE OF 2.79L/s

SRP1  
2.37ha CATCHMENT WITH 3% VOLUME DESIGN OF 711m<sup>3</sup>  
30.0m L x 6.0m W x 2.0m H  
ACTUAL VOLUME OF 740.0m<sup>3</sup>  
2 x T-BAR DECANTS TO ACHIEVE A MIN RATE OF 7.11L/s

SRP2  
0.92ha CATCHMENT WITH 3% VOLUME DESIGN OF 276m<sup>3</sup>  
12.0m L x 4.0m W x 2.0m H  
ACTUAL VOLUME OF 312.0m<sup>3</sup>  
1 x T-BAR DECANTS TO ACHIEVE A MIN RATE OF 2.76L/s

DEB 9  
TREATMENT DEVICE CATCHMENT 0.3ha  
WITH 2% VOLUME DESIGN OF 60m<sup>3</sup>

DEB 8  
TREATMENT DEVICE CATCHMENT 0.3ha  
WITH 2% VOLUME DESIGN OF 60m<sup>3</sup>

DEB 7  
TREATMENT DEVICE CATCHMENT 0.3ha

**LEGEND**

- 60.0 PROPOSED CONTOURS
- 52.0 EXISTING CONTOURS
- EARTHWORKS EXTENT
- █ NATURAL WETLAND
- █ MANMADE WETLAND

**NOTES:**

1. ALL CLEAN WATER RUNOFF FROM UPSTREAM CATCHMENTS SHALL BE DIVERTED AWAY FROM THE WORKS AND TOWARDS STABILIZED DRAINS TO PREVENT SURFACE EROSION.
2. EROSION AND SEDIMENT CONTROL PLANS SHALL COMPLY WITH THE "EROSION AND SEDIMENT CONTROL GUIDELINES FOR LAND DISTURBING ACTIVITIES" ALSO KNOWN AS GDOS.
3. EROSION AND SEDIMENT CONTROL MEASURES SHALL BE IN PLACE AND FULLY OPERATIONAL PRIOR TO START OF EARTHWORKS. THE CONTRACTOR SHALL ARRANGE FOR AND ATTEND A PRELIMINARY SEDIMENT CONTROL MEETING ON-SITE WITH AC REPRESENTATIVE AND THE ENGINEER.
4. CONTRACTOR SHALL ENSURE THAT A COPY OF EROSION AND SEDIMENT CONTROL PLANS AVAILABLE ON SITE AT ALL TIMES AND THAT ALL SUB-CONTRACTORS AND PERSONNEL INVOLVED IN EARTHWORKS OR OTHER ACTIVITIES RELATED TO EROSION AND SEDIMENT CONTROL HAVE ACCESS TO THESE PLANS AND ARE FAMILIAR WITH THE MEASURES TO BE UNDERTAKEN.

**CONSENT ISSUE**

REVISION	CHANGES	CHECKED	DATE
B	INFORMAL S92 RESPONSE	ZY	21/07/23
A	ORIGINAL ISSUE	VC	24/11/21

COPYRIGHT:  
This document and the copyright in this document remain the property of Crang Consulting Ltd. The contents of this document may not be reproduced either in whole or in part by any means whatsoever without the prior written consent of Crang Consulting.

**CRANG CIVIL**  
CONSULTING ENGINEERS

PHONE +64 09 320 3325  
WEB www.crangcivil.co.nz  
ADDRESS 1016a Great South Road, Penrose, Auckland  
POST PO Box 42-089, Orakei, Auckland 1745, NZ

CLIENT  
**ABIB (OAMARU) LTD**

PROJECT  
**GOODLAND COASTAL FARM**

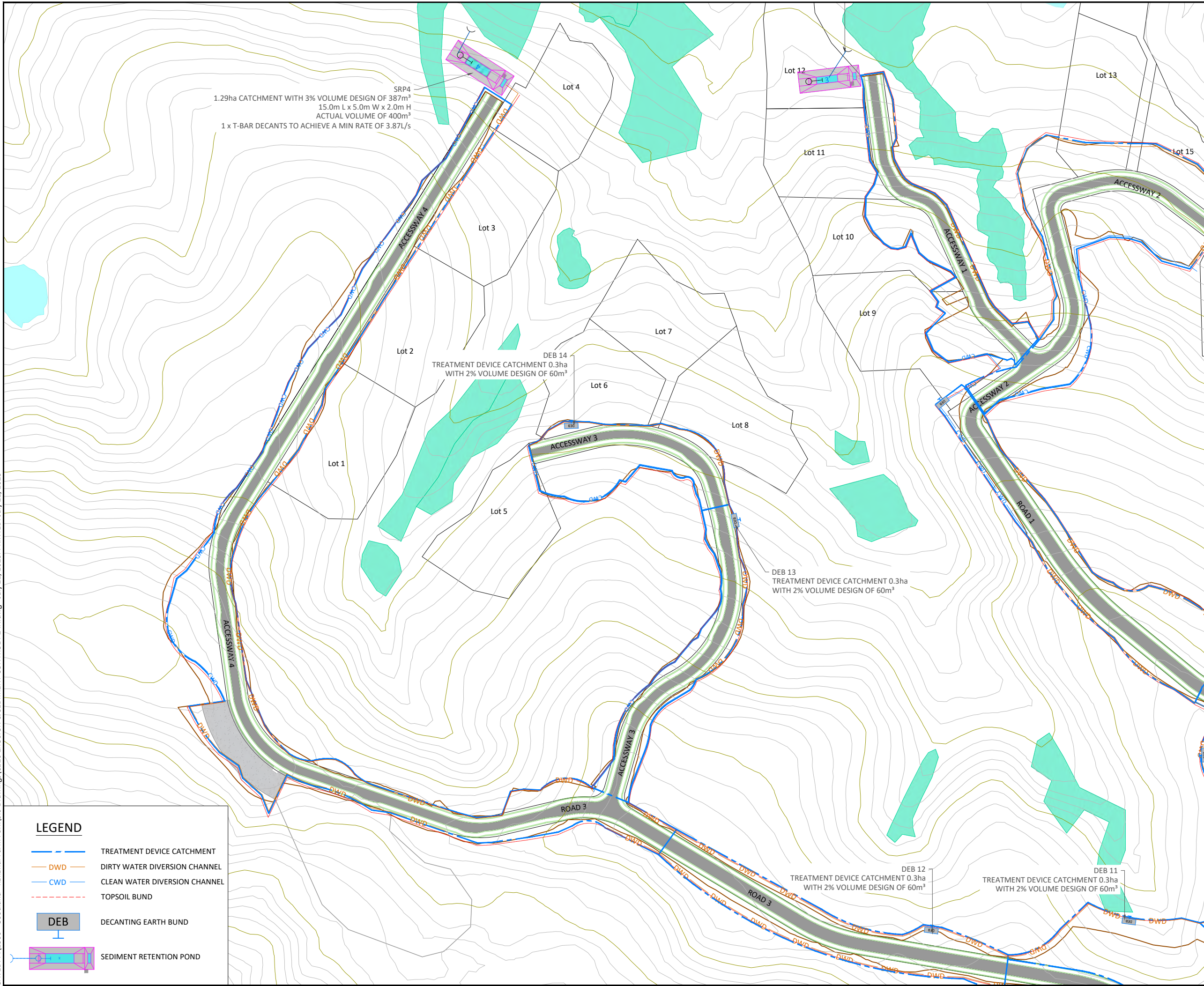
TITLE  
**EROSION & SEDIMENT CONTROL PLAN - SHEET 2**

DRAWN	MD	SCALE	A1 1:1000
DESIGNED	VC		A3 1:2000
PROJECT No	1366	DRAWING No	C222
		REVISION	B

**LEGEND**

- TREATMENT DEVICE CATCHMENT
- DWD DIRTY WATER DIVERSION CHANNEL
- CWD CLEAN WATER DIVERSION CHANNEL
- - - TOPSOIL BUND
- DEB DECANTING EARTH BUND
- SRP SEDIMENT RETENTION POND

SAVED: P:\1366 - Goodland Farm Park\5.0 Drawings\C220 EROSION & SEDIMENT CONTROL PLAN.dwg - July 21, 2023. PRINTED: July 21, 2023



1.29ha CATCHMENT WITH 3% VOLUME DESIGN OF 387m<sup>3</sup>  
 15.0m L x 5.0m W x 2.0m H  
 ACTUAL VOLUME OF 400m<sup>3</sup>  
 1 x T-BAR DECANTS TO ACHIEVE A MIN RATE OF 3.87L/s

TREATMENT DEVICE CATCHMENT 0.3ha  
 WITH 2% VOLUME DESIGN OF 60m<sup>3</sup>

DEB 13  
 TREATMENT DEVICE CATCHMENT 0.3ha  
 WITH 2% VOLUME DESIGN OF 60m<sup>3</sup>

DEB 12  
 TREATMENT DEVICE CATCHMENT 0.3ha  
 WITH 2% VOLUME DESIGN OF 60m<sup>3</sup>

TREATMENT DEVICE CATCHMENT 0.3ha  
 WITH 2% VOLUME DESIGN OF 60m<sup>3</sup>

**LEGEND**

- 60.0 PROPOSED CONTOURS
- 52.0 EXISTING CONTOURS
- EARTHWORKS EXTENT
- █ NATURAL WETLAND
- █ MANMADE WETLAND

**NOTES:**

1. ALL CLEAN WATER RUNOFF FROM UPSTREAM CATCHMENTS SHALL BE DIVERTED AWAY FROM THE WORKS AND TOWARDS STABILIZED DRAINS TO PREVENT SURFACE EROSION.
2. EROSION AND SEDIMENT CONTROL PLANS SHALL COMPLY WITH THE "EROSION AND SEDIMENT CONTROL GUIDELINES FOR LAND DISTURBING ACTIVITIES" ALSO KNOWN AS GDOS.
3. EROSION AND SEDIMENT CONTROL MEASURES SHALL BE IN PLACE AND FULLY OPERATIONAL PRIOR TO START OF EARTHWORKS. THE CONTRACTOR SHALL ARRANGE FOR AND ATTEND A PRELIMINARY SEDIMENT CONTROL MEETING ON-SITE WITH AC REPRESENTATIVE AND THE ENGINEER.
4. CONTRACTOR SHALL ENSURE THAT A COPY OF EROSION AND SEDIMENT CONTROL PLANS AVAILABLE ON SITE AT ALL TIMES AND THAT ALL SUB-CONTRACTORS AND PERSONNEL INVOLVED IN EARTHWORKS OR OTHER ACTIVITIES RELATED TO EROSION AND SEDIMENT CONTROL HAVE ACCESS TO THESE PLANS AND ARE FAMILIAR WITH THE MEASURES TO BE UNDERTAKEN.

**CONSENT ISSUE**

C	INFORMAL S92 RESPONSE	ZY	21/07/23
B	ROAD 3 RE-ALIGN	VC	20/12/21
A	ORIGINAL ISSUE	VC	24/11/21
REVISION	CHANGES	CHECKED	DATE

COPYRIGHT:  
 This document and the copyright in this document remain the property of Crang Consulting Ltd. The contents of this document may not be reproduced either in whole or in part by any means whatsoever without the prior written consent of Crang Consulting.

**CRANG CIVIL**  
 CONSULTING ENGINEERS

PHONE +64 09 320 3325  
 WEB www.crangcivil.co.nz  
 ADDRESS 1016a Great South Road, Penrose, Auckland  
 POST PO Box 42-089, Orakei, Auckland 1745, NZ

CLIENT  
**ABIB (OAMARU) LTD**

PROJECT  
**GOODLAND COASTAL FARM**

TITLE  
**EROSION & SEDIMENT CONTROL PLAN - SHEET 3**

DRAWN	MD	SCALE	A1 1:1000
DESIGNED	VC		A3 1:2000
PROJECT No	1366	DRAWING No	C223
		REVISION	C

**LEGEND**

- TREATMENT DEVICE CATCHMENT
- DWD DIRTY WATER DIVERSION CHANNEL
- CWD CLEAN WATER DIVERSION CHANNEL
- TOPSOIL BUND
- █ DEB DECANTING EARTH BUND
- █ SEDIMENT RETENTION POND

**STABILISED CONSTRUCTION ENTRANCE SPECIFICATIONS:**

**APPLICATION**

USE A STABILISED CONSTRUCTION ENTRANCE AT ALL POINTS OF CONSTRUCTION SITE INGRESS AND EGRESS WITH A CONSTRUCTION PLAN LIMITING TRAFFIC TO THESE ENTRANCES ONLY. THEY ARE PARTICULARLY USEFUL ON SMALL CONSTRUCTION SITES BUT CAN BE UTILISED FOR ALL PROJECTS.

**DESIGN:**

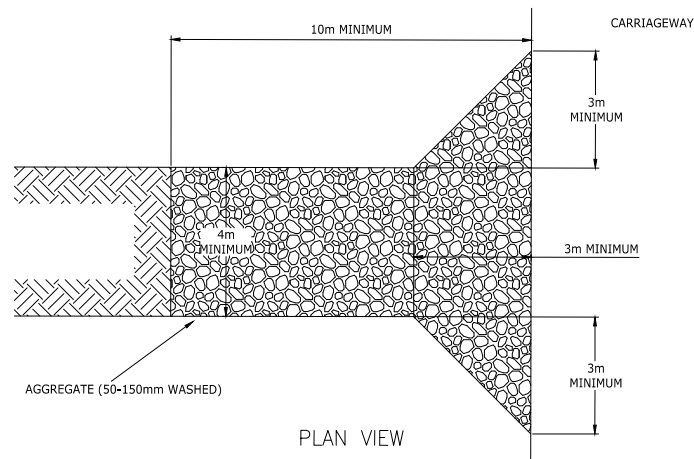
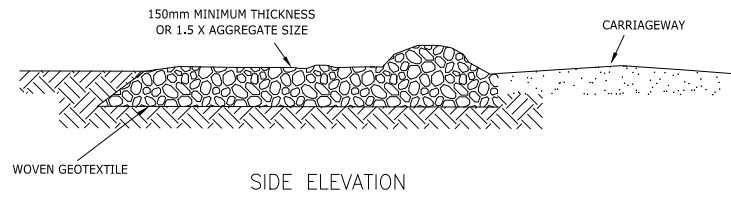
1. CLEAR THE ENTRANCE AND EXIT AREA OF ALL VEGETATION, ROOTS AND OTHER UNSUITABLE MATERIAL AND PROPERLY GRADE IT.
2. LAY WOVEN GEOTEXTILE; PIN DOWN EDGES AND OVERLAP JOINTS.
3. PROVIDE DRAINAGE TO CARRY RUNOFF FROM THE STABILISED CONSTRUCTION ENTRANCE TO A SEDIMENT CONTROL MEASURE.
4. PLACE AGGREGATE TO THE SPECIFICATIONS BELOW AND SMOOTH IT.

**STABILISED CONSTRUCTION ENTRANCE AGGREGATE SPECIFICATIONS:**

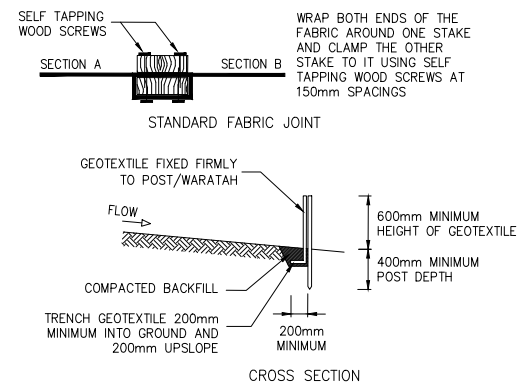
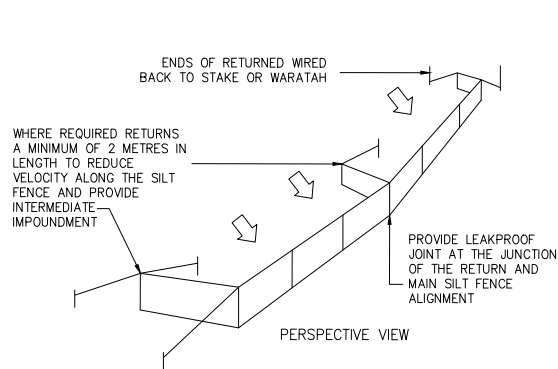
AGGREGATE SIZE	5-150mm WASHED AGGREGATE
THICKNESS	150mm MINIMUM OR 1.5 X AGGREGATE SIZE
LENGTH	10m MINIMUM
WIDTH	4m MINIMUM

**MAINTENANCE**

1. MAINTAIN THE STABILISED CONSTRUCTION ENTRANCE IN A CONDITION TO PREVENT SEDIMENT FROM LEAVING THE CONSTRUCTION SITE. AFTER EACH RAINFALL INSPECT ANY STRUCTURE USED TO TRAP SEDIMENT FROM THE STABILISED CONSTRUCTION ENTRANCE AND CLEAN OUT AS NECESSARY.
2. WHEN WHEEL WASHING IS ALSO REQUIRED, ENSURE THIS IS DONE ON AN AREA STABILISED WITH AGGREGATE WHICH DRAINS TO AN APPROVED SEDIMENT RETENTION FACILITY.



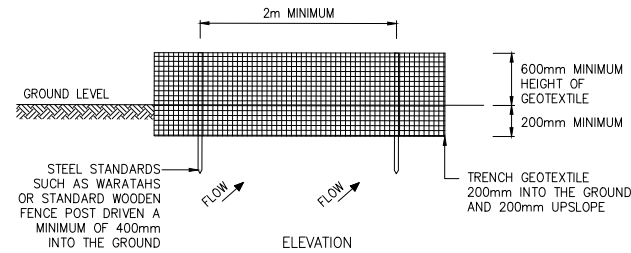
**STABILISED CONSTRUCTION ENTRANCE**



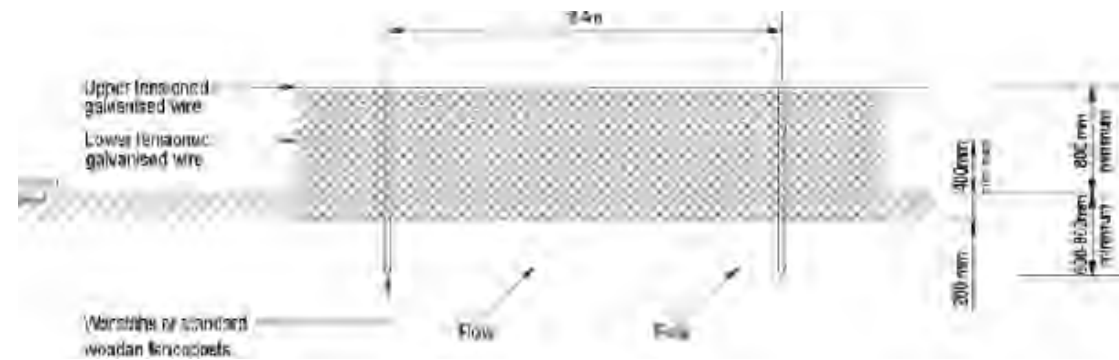
**SILT FENCE DESIGN CRITERIA:**

SLOPE STEEPNESS %	SLOPE LENGTH (m) (MAXIMUM)	SPACING OF RETURNS (m)
< 2%	N/A	UNLIMITED
2-10%	40	60
10-20%	30	50
20-33%	20	40
33-50%	15	30
>50%	6	20

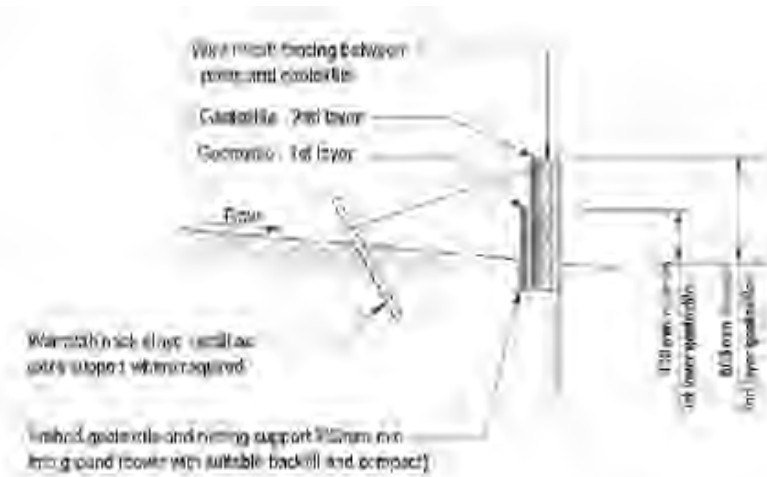
GRAB TENSILE STRENGTH: >440N (ASTM D4632)  
 TENSILE MODULUS: 0.140 pa (MINIMUM)  
 APPARENT OPENING SIZE: 0.1-0.5mm (ASTM D4751)



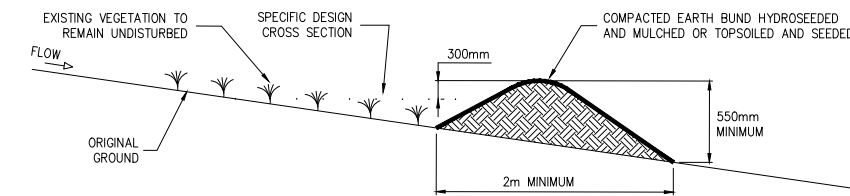
**SILT FENCE CONSTRUCTION**



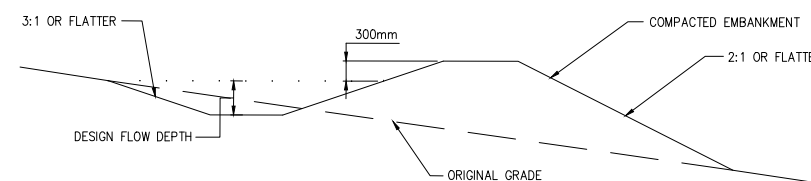
**SUPER SILT FENCE ELEVATION**



**SUPER SILT FENCE CROSS SECTION**



**CLEANWATER RUNOFF DIVERSION BUND - CROSS SECTION**



**RUNOFF DIVERSION BUND - CROSS SECTION**

**CONSENT ISSUE**

REVISION	CHANGES	CHECKED	DATE
B	INFORMAL S92 RESPONSE	ZY	21/07/23
A	ORIGINAL ISSUE	VC	21/07/23

**COPYRIGHT:**  
 This document and the copyright in this document remain the property of Crang Consulting Ltd. The contents of this document may not be reproduced either in whole or in part by any means whatsoever without the prior written consent of Crang Consulting.



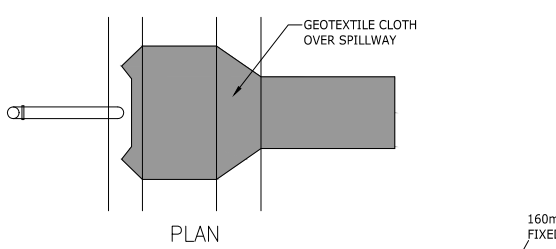
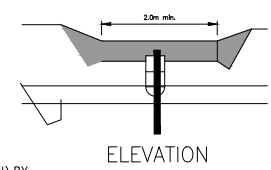
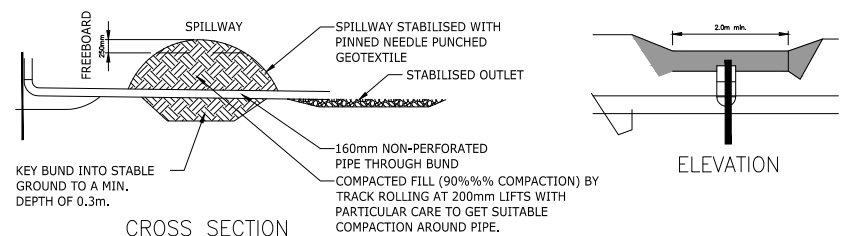
PHONE +64 09 320 3325  
 WEB www.crangcivil.co.nz  
 ADDRESS 1016a Great South Road, Penrose, Auckland  
 POST PO Box 42-089, Orakei, Auckland 1745, NZ

CLIENT  
**ABIB (OAMARU) LTD**

PROJECT  
**GOODLAND COASTAL FARM**

TITLE  
**EROSION & SEDIMENT CONTROL DETAILS SHEET 1**

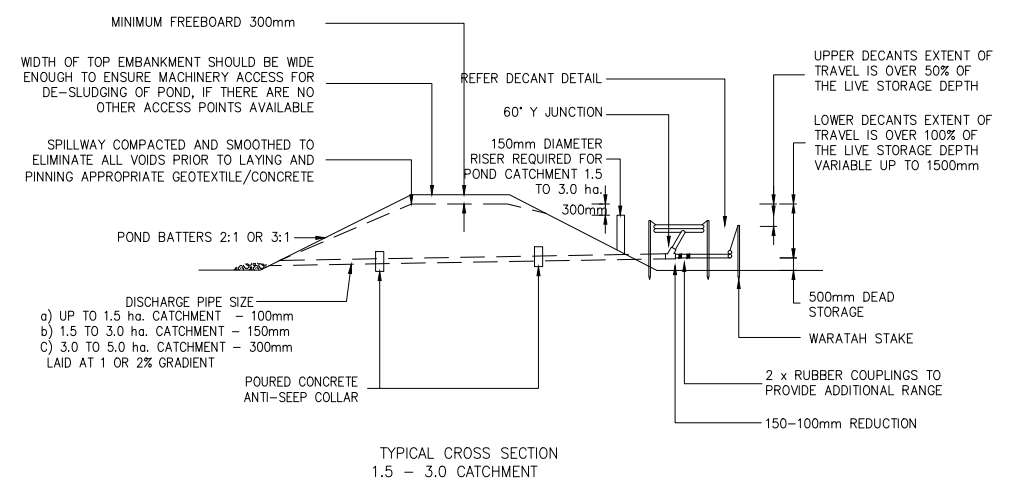
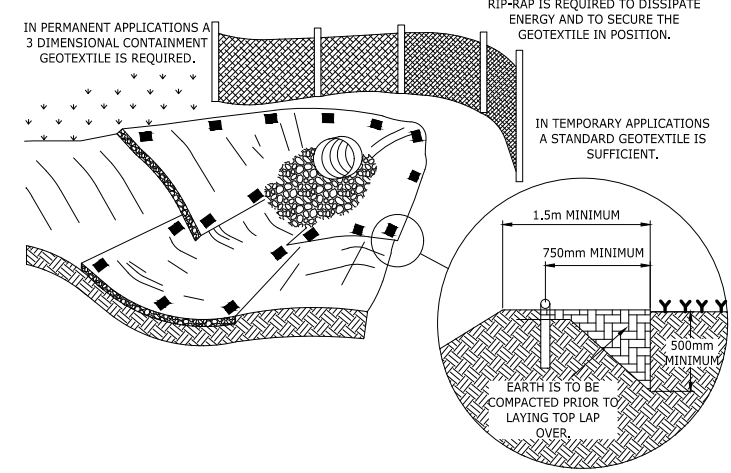
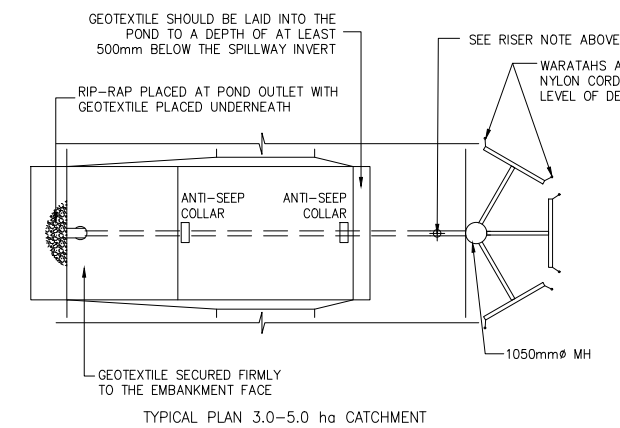
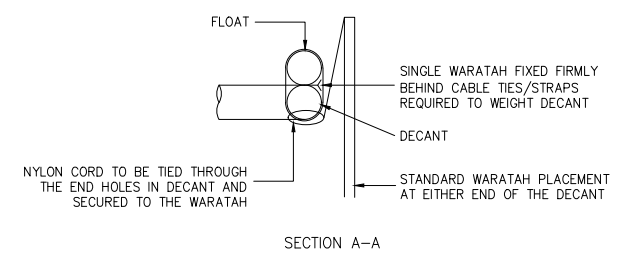
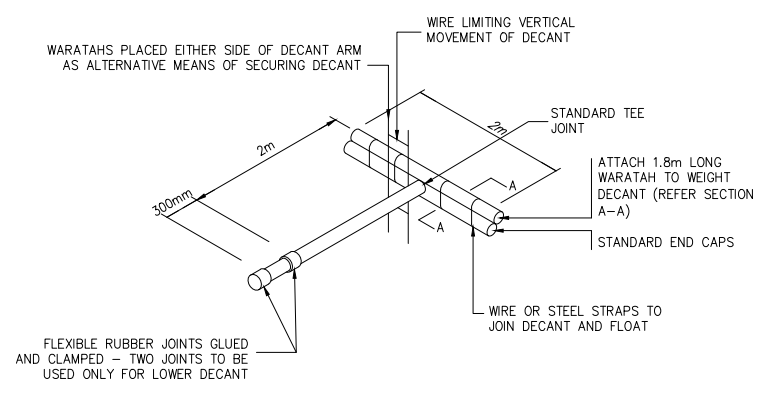
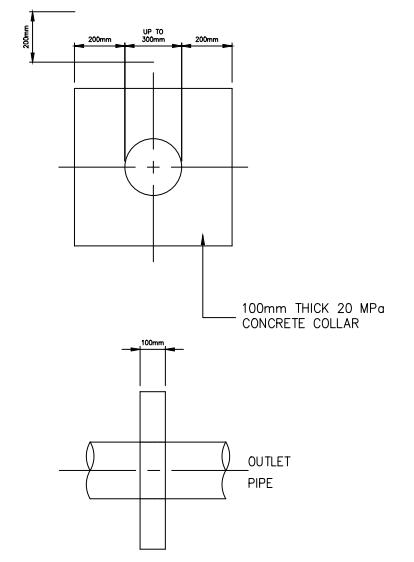
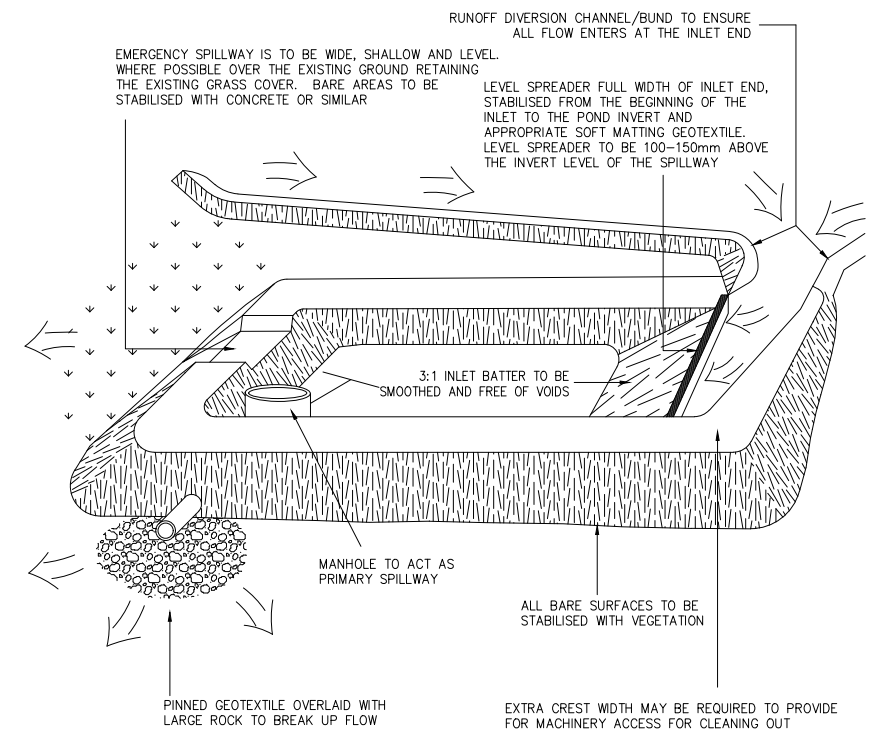
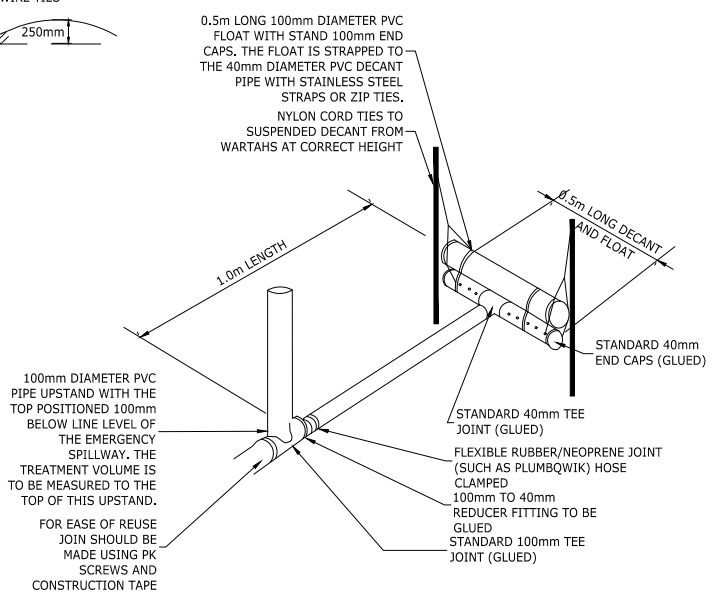
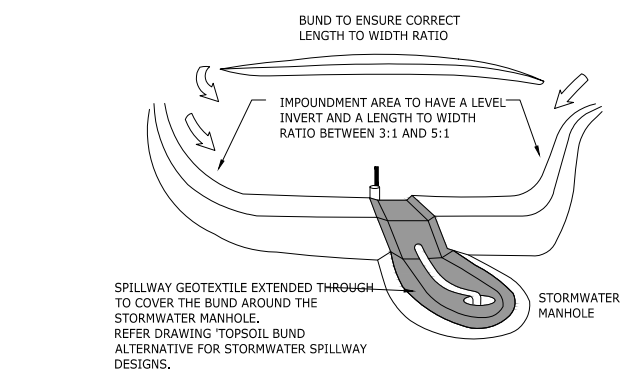
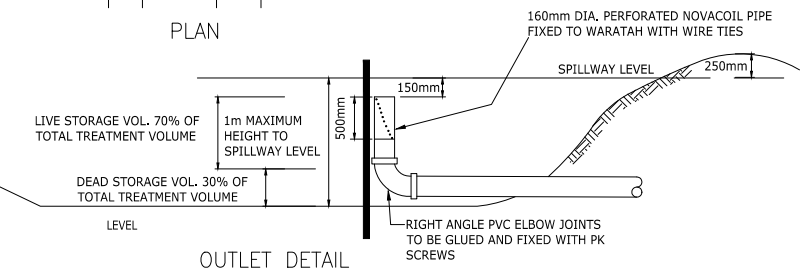
DRAWN	MD	SCALE	A1
DESIGNED	VC	NOT TO SCALE	A3
PROJECT No	DRAWING No	REVISION	
1366	C224	B	



**DECANTING EARTH BUND**  
MAXIMUM CATCHMENT 0.3ha  
2% VOLUME (60m<sup>3</sup>) PER 0.3ha CATCHMENT)

NOTE: THE 100mm DIAMETER PVC PIPE UPSTAND IS ONLY REQUIRED WHERE THE 2m WIDE EMERGENCY SPILLWAY DISCHARGES TO VULNERABLE AREA OR WHERE THE DISCHARGE IS REQUIRED TO BE PIPED TO A SAFE OUTFALL SUCH AS A STORMWATER MANHOLE. IF THE UPSTAND IS NOT REQUIRED THE DECANT CAN BE CONNECTED DIRECT TO A 40mm DIAMETER OUTFALL PIPE AND THE TREATMENT VOLUME IS MEASURED TO THE INVERT OF THE EMERGENCY SPILLWAY.

NOTE: THE DECANT HAS A 40mm DIAMETER PVC PIPE WITH A 1.3m LONG ARM (INCLUDING FLEXIBLE JOINT), A 0.5m LONG DECANT AND 20 x 10mm DIAMETER EQUALLY SPACED HOLES POSITIONED HORIZONTALLY AT 10 AND 2 O'CLOCK



- NUMBER OF DECANTS FOR EACH POND SHALL BE AS FOLLOWS:
- i) UP TO 1.5ha CATCHMENT - 1 DECANT
  - ii) 1.5-3.0ha CATCHMENT - 2 DECANTS
  - iii) 3 TO 5 ha CATCHMENT - 3 DECANTS-CONNECTED TO 1050 Ø MH

INFORMATION FROM AUCKLAND REGIONAL COUNCIL TP10-EROSION & SEDIMENT CONTROL

**CONSENT ISSUE**

REVISION	CHANGES	CHECKED	DATE
B	INFORMAL S92 RESPONSE	ZY	21/07/23
A	ORIGINAL ISSUE	VC	21/07/23

COPYRIGHT:  
This document and the copyright in this document remain the property of Crang Consulting Ltd. The contents of this document may not be reproduced either in whole or in part by any means whatsoever without the prior written consent of Crang Consulting.

**CRANG CIVIL CONSULTING ENGINEERS**

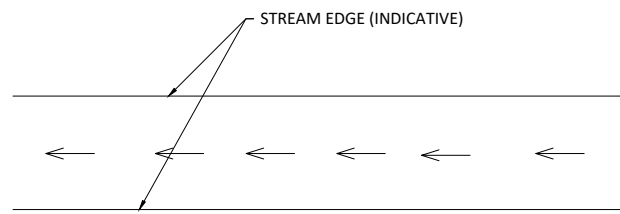
PHONE +64 09 320 3325  
WEB www.crangcivil.co.nz  
ADDRESS 1016a Great South Road, Penrose, Auckland  
POST PO Box 42-089, Orakei, Auckland 1745, NZ

CLIENT  
**ABIB (OAMARU) LTD**

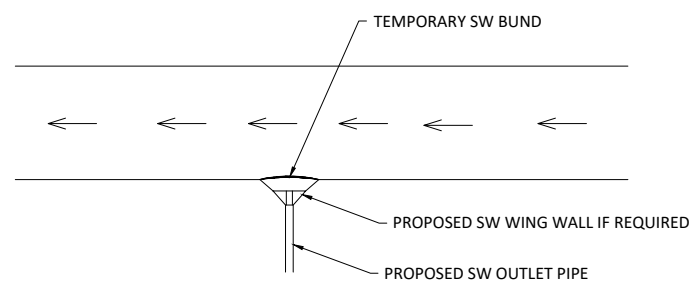
PROJECT  
**GOODLAND COASTAL FARM**

TITLE  
**EROSION & SEDIMENT CONTROL DETAILS SHEET 2**

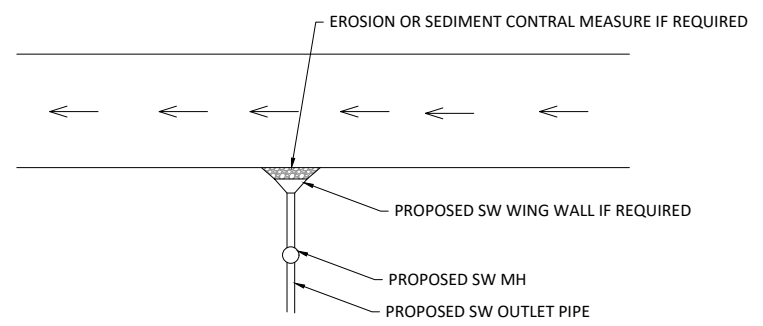
DRAWN	MD	SCALE	A1
DESIGNED	VC	NOT TO SCALE	A3
PROJECT No	DRAWING No	REVISION	
1366	C225	B	



**STORMWATER OUTLET - PRE CONSTRUCTION**  
1:100 (A1)



**STORMWATER OUTLET - DURING CONSTRUCTION**  
1:100 (A1)



**STORMWATER OUTLET - POST CONSTRUCTION**  
1:100 (A1)

**PROPOSED CONSTRUCTION SEQUENCE FOR STORMWATER OUTLET DISCHARGING TO STREAM**

1. SETUP A TEMPORARY BUND AROUND THE OUTLET TO STOP STREAM FLOW FROM ENTERING THE CONSTRUCTION AREA.
2. DE-FISH AND THEN PUMP OUT ANY EXCESS WATER INSIDE THE CONSTRUCTION AREA AT THE OUTLET.
3. INSTALL A NEW STORMWATER OUTLET PIPE, WINGWALL AND OTHER OUTLET PROTECTION MEASURE SUCH AS RIP RAP.
4. REMOVE THE TEMPORARY BUND AND REINSTATE THE STREAM BED TO A NATURAL SHAPE .

**OTHER NOTES**

- WORKS TO BE COMPLETED IN DRY WEATHER WINDOW.
- LOCATIONS SHOWN ON THE DRAWING ARE INDICATIVE AND FOR ILLUSTRATION PURPOSE ONLY.
- REFER TO DRAWINGS FOR LOCATION OF THE OUTLET RELATIVE TO THE DEVELOPMENT.

**CONSENT ISSUE**

REVISION	CHANGES	CHECKED	DATE
A	ORIGINAL ISSUE	ZY	21/07/23

COPYRIGHT:  
This document and the copyright in this document remain the property of Crang Consulting Ltd. The contents of this document may not be reproduced either in whole or in part by any means whatsoever without the prior written consent of Crang Consulting.



PHONE +64 09 320 3325  
WEB www.crangcivil.co.nz  
ADDRESS 1016a Great South Road, Penrose, Auckland  
POST PO Box 42-089, Orakei, Auckland 1745, NZ

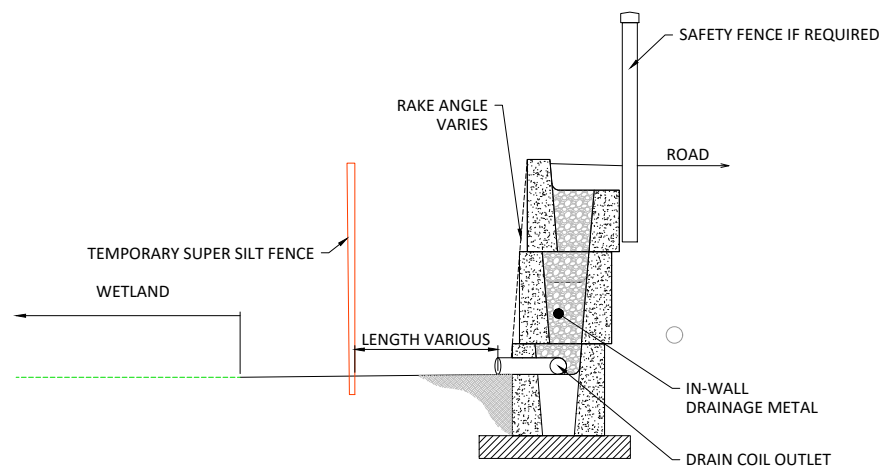
CLIENT  
**ABIB (OAMARU) LTD**

PROJECT  
**GOODLAND COASTAL FARM**

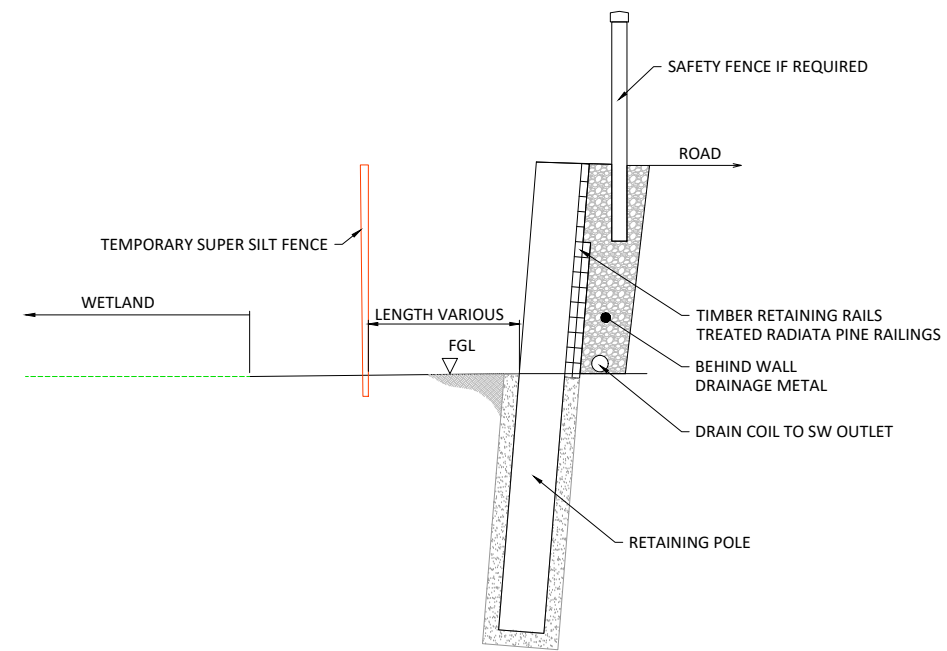
TITLE  
**STORMWATER OUTFALL  
EROSION & SEDIMENT  
CONTROL PLAN**

DRAWN	TG	SCALE A1 1:100
DESIGNED	TG	A3 1:200
PROJECT No 1366	DRAWING No C226	REVISION A

SAVED: P:\1366 - Goodland - Kakanui Farm Par\5.0 Drawings\C227 SEDIMENT & EROSION CONTROL ADJACENT TO WETLAND.dwg - July 21, 2023. PRINTED: July 21, 2023



**TYPICAL MASS BLOCK WALL DETAIL AT WETLAND AND ROAD INTERFACE**  
SCALE 1:25



**TYPICAL RETAINING WALL DETAIL AT WETLAND AND ROAD INTERFACE**  
SCALE 1:25

**CONSENT ISSUE**

REVISION	CHANGES	CHECKED	DATE
A	ORIGINAL ISSUE	ZY	21/07/23

COPYRIGHT:  
This document and the copyright in this document remain the property of Crang Consulting Ltd. The contents of this document may not be reproduced either in whole or in part by any means whatsoever without the prior written consent of Crang Consulting.



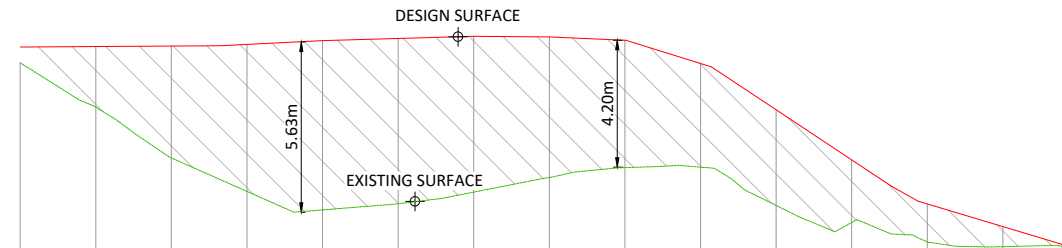
PHONE +64 09 320 3325  
WEB www.crangcivil.co.nz  
ADDRESS 1016a Great South Road, Penrose, Auckland  
POST PO Box 42-089, Orakei, Auckland 1745, NZ

CLIENT  
**ABIB (OAMARU) LTD**

PROJECT  
**GOODLAND COASTAL FARM**

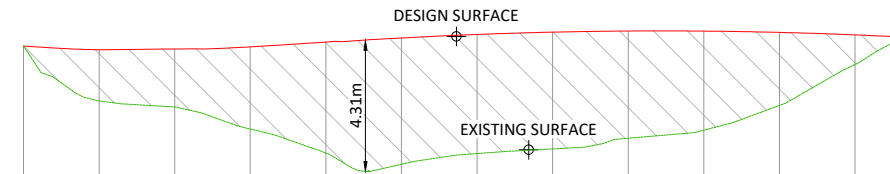
TITLE  
**EROSION & SEDIMENT CONTROL ADJACENT TO WETLAND**

DRAWN	TG	SCALE A1 1:25
DESIGNED	TG	A3 1:50
PROJECT No 1366	DRAWING No C227	REVISION A



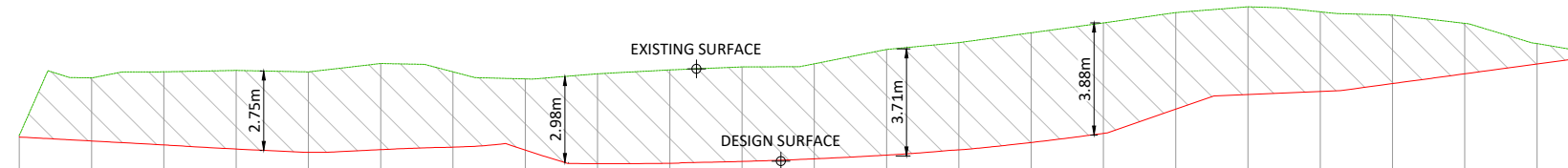
DATUM 40.00m	
TOP OF WALL	47.15
BOTTOM OF WALL	47.15
WALL HEIGHT	0.00
CHAINAGE	0.00

RETAINING WALL 1  
SCALE 1H:2V



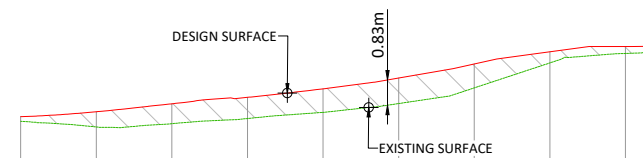
DATUM 40.00m	
TOP OF WALL	47.47
BOTTOM OF WALL	47.48
WALL HEIGHT	-0.01
CHAINAGE	0.00

RETAINING WALL 2  
SCALE 1H:2V



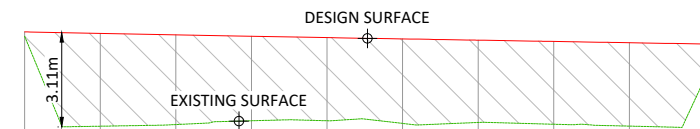
DATUM 65.00m	
TOP OF WALL	69.95
BOTTOM OF WALL	69.95
WALL HEIGHT	0.00
CHAINAGE	0.00

RETAINING WALL 3  
SCALE 1H:2V



DATUM 65.00m	
TOP OF WALL	68.80
BOTTOM OF WALL	68.65
WALL HEIGHT	0.15
CHAINAGE	0.00

RETAINING WALL 4  
SCALE 1H:2V



DATUM 75.00m	
TOP OF WALL	81.41
BOTTOM OF WALL	81.26
WALL HEIGHT	0.15
CHAINAGE	0.00

RETAINING WALL 5  
SCALE 1H:2V

NOTES

1. REFER TO DRAWINGS C200 - C203 FOR RETAINING WALL ALIGNMENTS.

CONSENT ISSUE

REVISION	CHANGES	CHECKED	DATE
C	INFORMAL S92 RESPONSE	ZY	21/07/23
B	ROAD 3 RE-ALIGN	VC	20/12/21
A	ORIGINAL	VC	16/09/21

COPYRIGHT:  
This document and the copyright in this document remain the property of Crang Consulting Ltd. The contents of this document may not be reproduced either in whole or in part by any means whatsoever without the prior written consent of Crang Consulting.



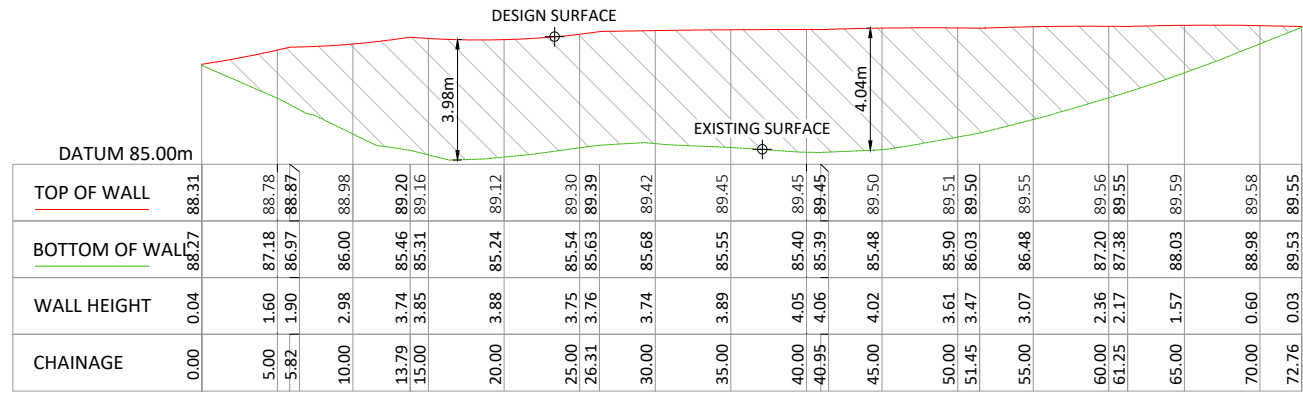
PHONE +64 09 320 3325  
WEB www.crangcivil.co.nz  
ADDRESS 1016a Great South Road, Penrose, Auckland  
POST PO Box 42-089, Orakei, Auckland 1745, NZ

CLIENT  
ABIB (OMARU) LTD

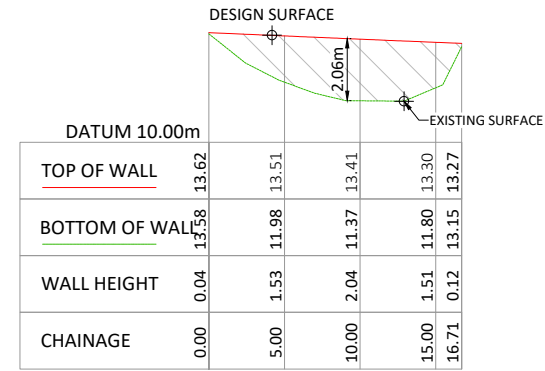
PROJECT  
GOODLAND COASTAL FARM

TITLE  
RETAINING WALL  
LONGSECTIONS - SHEET 1

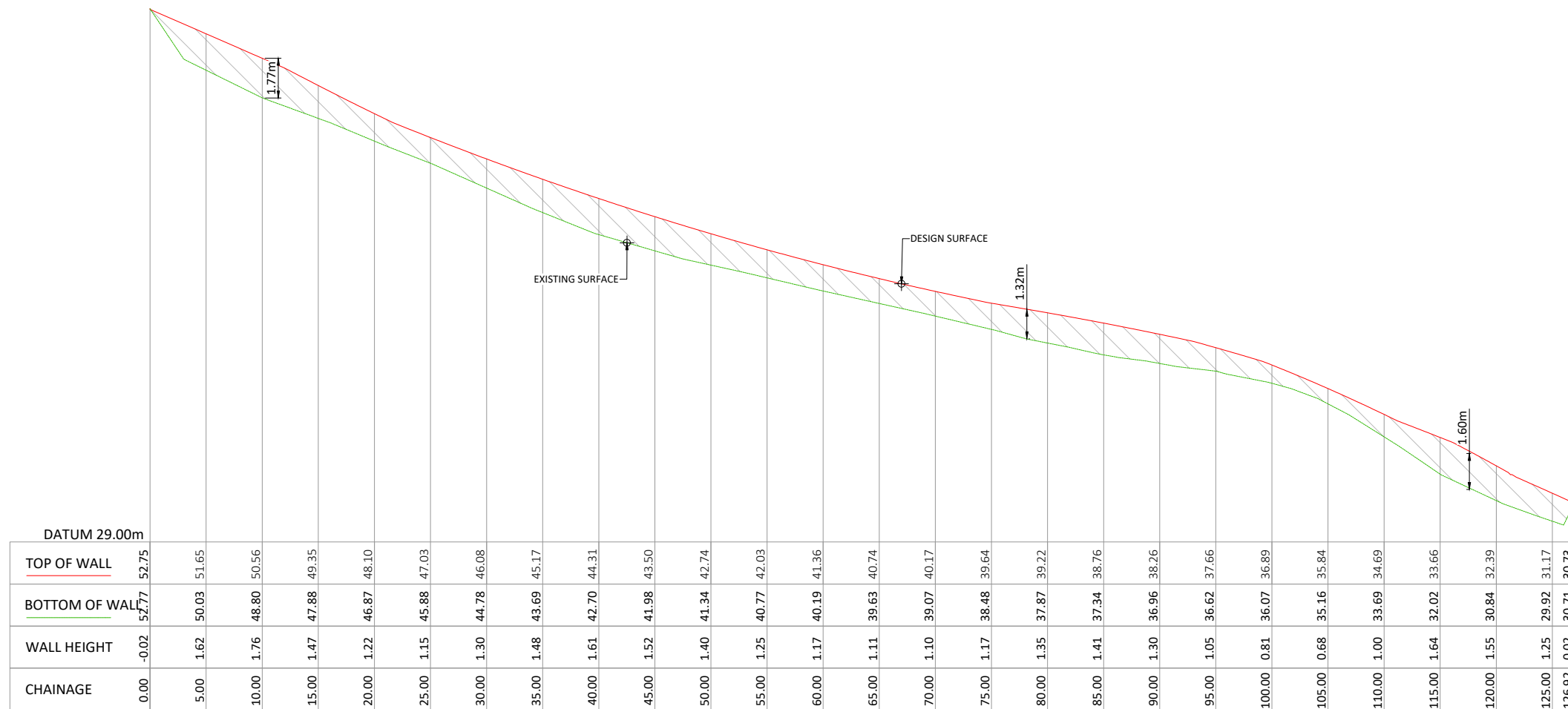
DRAWN	MD	SCALE	A1 1:250
DESIGNED	VC		A3 1:500
PROJECT No	1366	DRAWING No	C240
		REVISION	C



RETAINING WALL 6  
SCALE 1H:2V



RETAINING WALL 8  
SCALE 1H:2V



RETAINING WALL 7  
SCALE 1H:2V

NOTES

1. REFER TO DRAWINGS C200 - C203 FOR RETAINING WALL ALIGNMENTS.

CONSENT ISSUE

REVISION	CHANGES	CHECKED	DATE
C	INFORMAL S92 RESPONSE	ZY	21/07/23
B	ROAD 3 RE-ALIGN	VC	20/12/21
A	ORIGINAL	VC	16/09/21

COPYRIGHT:  
This document and the copyright in this document remain the property of Crang Consulting Ltd. The contents of this document may not be reproduced either in whole or in part by any means whatsoever without the prior written consent of Crang Consulting.



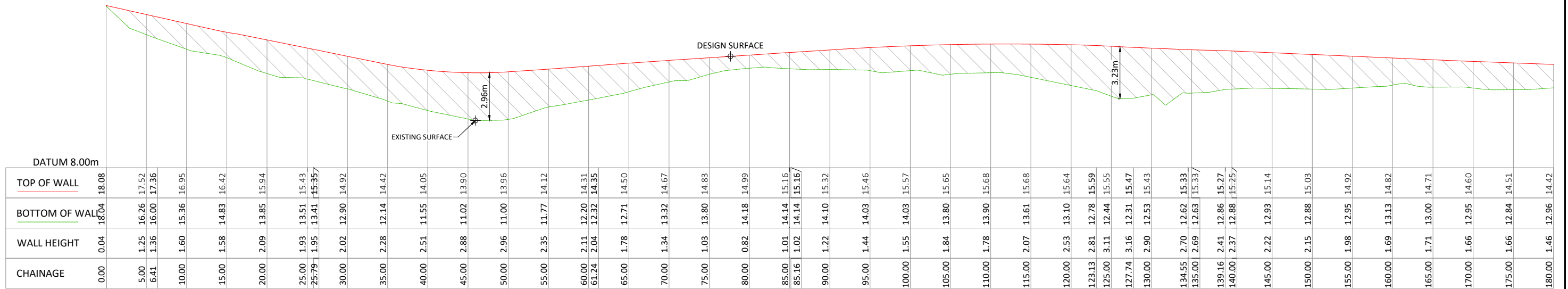
PHONE +64 09 320 3325  
WEB www.crangcivil.co.nz  
ADDRESS 1016a Great South Road, Penrose, Auckland  
POST PO Box 42-089, Orakei, Auckland 1745, NZ

CLIENT  
**ABIB (OAMARU) LTD**

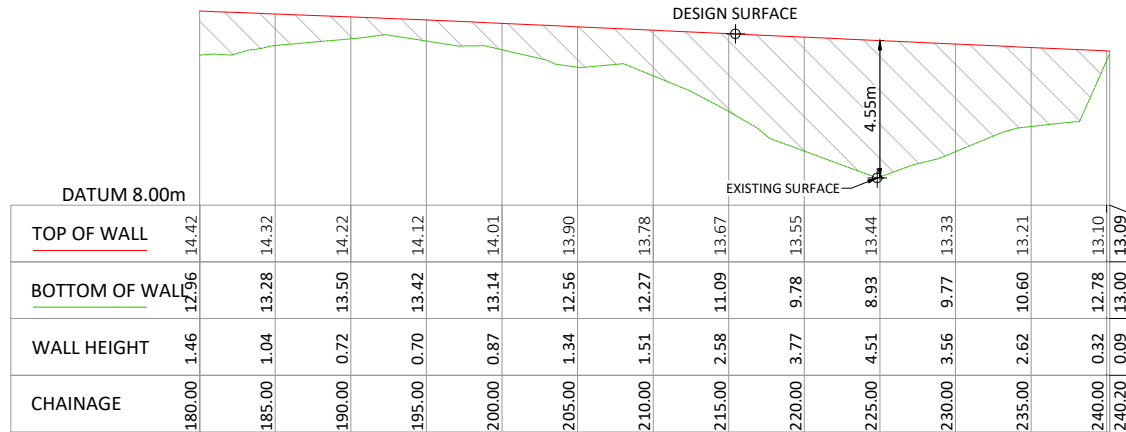
PROJECT  
**GOODLAND COASTAL FARM**

TITLE  
**RETAINING WALL  
LONGSECTIONS - SHEET 2**

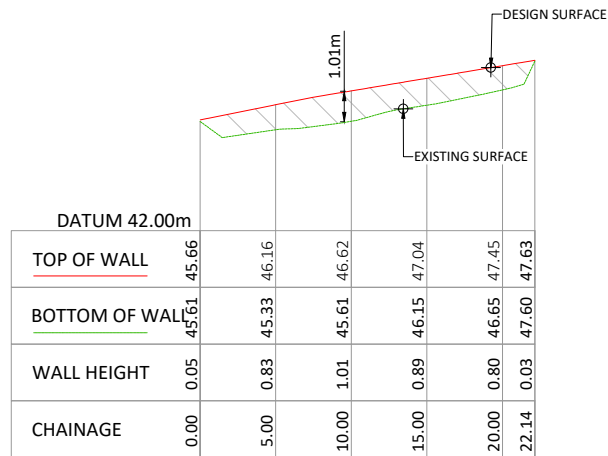
DRAWN	MD	SCALE	A1 1:250
DESIGNED	VC		A3 1:500
PROJECT No	DRAWING No	REVISION	
1366	C241	C	



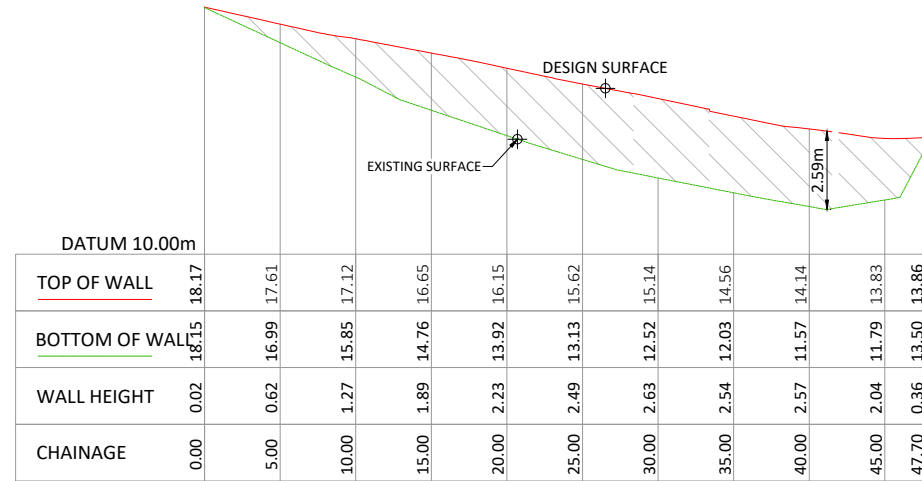
RETAINING WALL 9  
SCALE 1H:2V



RETAINING WALL 9  
SCALE 1H:2V



RETAINING WALL 11  
SCALE 1H:2V



RETAINING WALL 10  
SCALE 1H:2V

NOTES

- 1. REFER TO DRAWINGS C200 - C203 FOR RETAINING WALL ALIGNMENTS.

CONSENT ISSUE

C	INFORMAL S92 RESPONSE	ZY	21/07/23
B	ROAD 3 RE-ALIGN	VC	20/12/21
A	ORIGINAL	VC	16/09/21
REVISION	CHANGES	CHECKED	DATE

COPYRIGHT:  
This document and the copyright in this document remain the property of Crang Consulting Ltd. The contents of this document may not be reproduced either in whole or in part by any means whatsoever without the prior written consent of Crang Consulting.

PHONE +64 09 320 3325  
WEB www.crangcivil.co.nz  
ADDRESS 1016a Great South Road, Penrose, Auckland  
POST PO Box 42-089, Orakei, Auckland 1745, NZ

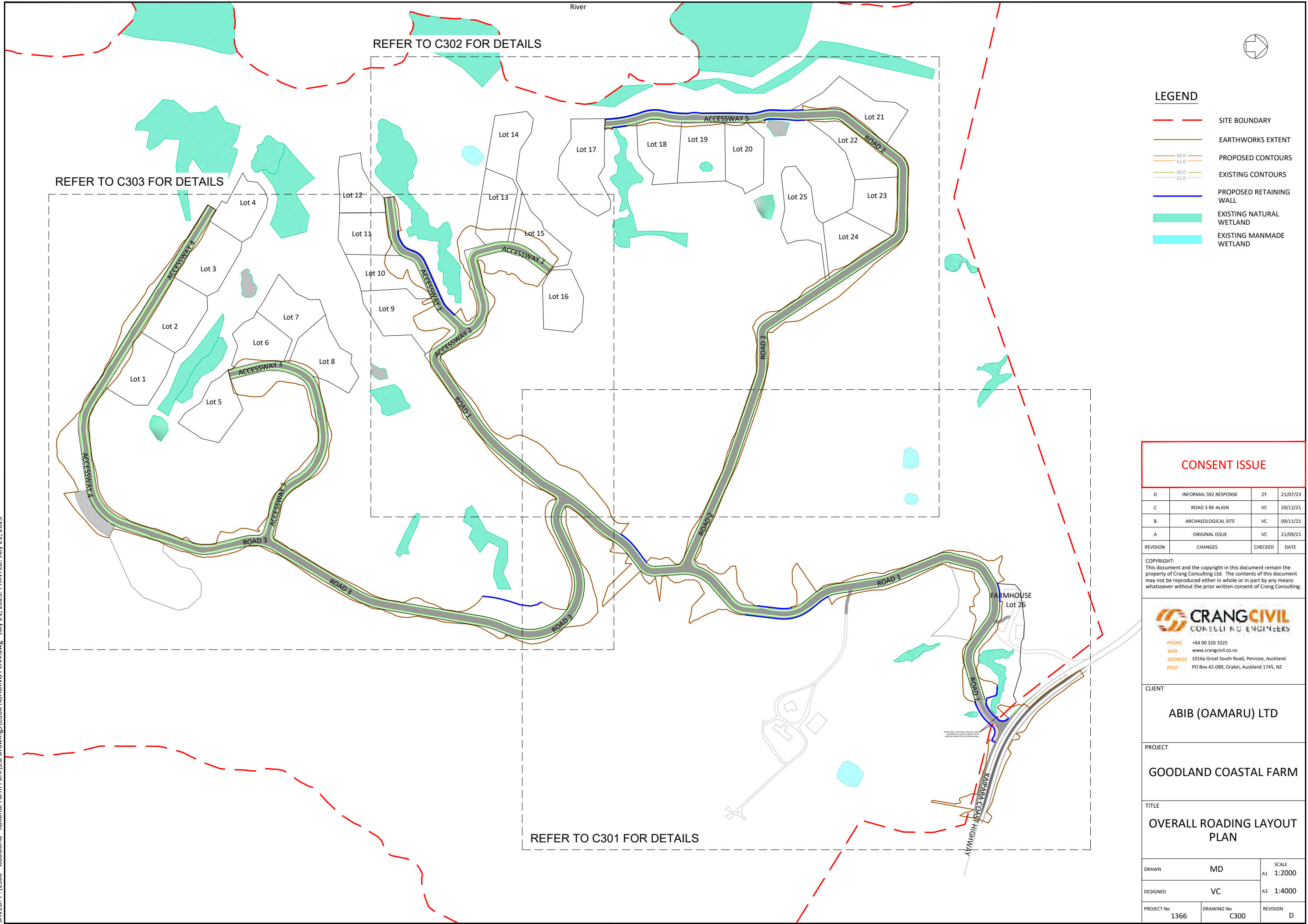
CLIENT  
**ABIB (OAMARU) LTD**

PROJECT  
**GOODLAND COASTAL FARM**

TITLE  
**RETAINING WALL  
LONGSECTIONS - SHEET 3**

DRAWN MD	SCALE A1 1:250
DESIGNED VC	A3 1:500
PROJECT No 1366	DRAWING No C242
	REVISION C

SAVED: P:\1366 - Goodland - Kakanui Farm Park\5.0 Drawings\C300 ROADING PLAN.dwg - July 21, 2023. PRINTED: July 21, 2023



REFER TO C302 FOR DETAILS

REFER TO C303 FOR DETAILS

REFER TO C301 FOR DETAILS



**LEGEND**

- SITE BOUNDARY
- EARTHWORKS EXTENT
- 50.0 PROPOSED CONTOURS
- 52.0 EXISTING CONTOURS
- PROPOSED RETAINING WALL
- EXISTING NATURAL WETLAND
- EXISTING MANMADE WETLAND

**CONSENT ISSUE**

D	INFORMAL S92 RESPONSE	ZY	21/07/23
C	ROAD 3 RE-ALIGN	VC	20/12/21
B	ARCHAEOLOGICAL SITE	VC	09/11/21
A	ORIGINAL ISSUE	VC	21/09/21
REVISION	CHANGES	CHECKED	DATE

COPYRIGHT:  
This document and the copyright in this document remain the property of Crang Consulting Ltd. The contents of this document may not be reproduced either in whole or in part by any means whatsoever without the prior written consent of Crang Consulting.

**CRANG CIVIL**  
CONSULTING ENGINEERS

PHONE +64 09 320 3225  
WEB www.crangcivil.co.nz  
ADDRESS 1016a Great South Road, Penrose, Auckland  
POST PO Box 42-089, Orakei, Auckland 1745, NZ

CLIENT  
**ABIB (OAMARU) LTD**

PROJECT  
**GOODLAND COASTAL FARM**

TITLE  
**OVERALL ROADING LAYOUT PLAN**

DRAWN	MD	SCALE	A1 1:2000
DESIGNED	VC	A3	1:4000
PROJECT No	DRAWING No	REVISION	
1366	C300	D	