

LOCALITY PLAN
N.T.S

3 PIGEON MOUNTAIN ROAD HALF MOON BAY AUCKLAND WESTERN BOUNDARY RETAINING WALLS

DRAWING SCHEDULE

DRAWING NUMBER	DRAWING NAME	SCALE (A3)	REVISION
001	TITLE SHEET AND DRAWING SCHEDULE	-	6
010	SITE PLAN	1:600	6
100	PILE TYPE DIAGRAM	1:100	6
101	FACE ELEVATION 1 OF 2	1:250	6
102	FACE ELEVATION 2 OF 2	1:250	6
201	TYPICAL SECTION DETAILS SECTION 2	1:50	6
202	TYPICAL SECTION DETAILS SECTION 3	1:50	6
300	MONITORING PLAN	1:600	6



27C WAIPAREIRA AVENUE
HENDERSON
PH: 027 557 7234
njacka@tge.co.nz

PROJECT
**3 PIGEON MOUNTAIN RD
HALF MOON BAY AUCKLAND
DEVELOPMENT**

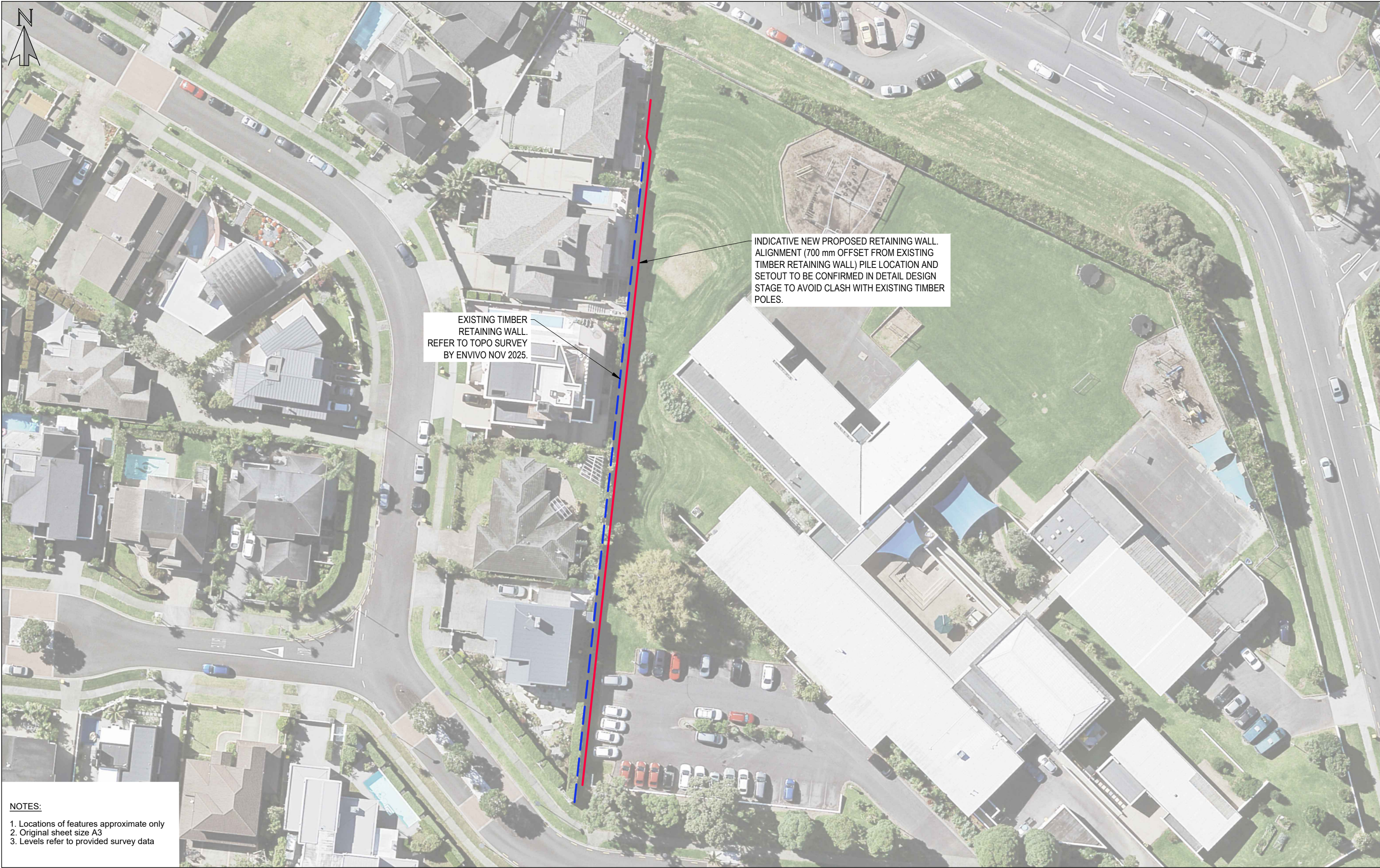
DRAWING TITLE
**TITLE SHEET AND
DRAWING SCHEDULE**

Date:	FEB 2026
Cad Ref:	J00538 r6.dwg
Designed:	RK
Drawn:	HY
Checked:	NJ

Issue	Date	Issue Description	By
6	17.02.2026	UPDATED AND ISSUED FOR RFI AND RC	HY
5	19.12.2025	UPDATED AND ISSUED FOR RFI AND RC	HY
4	01.05.2025	UPDATED AND ISSUED FOR RFI AND RC	HY
3	12.02.2024	UPDATED AND ISSUED FOR RFI AND RC	BL
2	30.09.2023	ISSUED FOR RFI AND RC	BL
1	20.04.2023	ISSUED FOR RC	BL

Check all dimensions and levels on site before commencing construction.
This drawing and design remains the property of Total Ground Engineering and may not be reproduced without the written permission of Total Ground Engineering.

PAPER SIZE	A3	JOB No.	DWG No.	REV.
SCALE	-	J00538	001	6



EXISTING TIMBER
RETAINING WALL.
REFER TO TOPO SURVEY
BY ENVIVO NOV 2025.

INDICATIVE NEW PROPOSED RETAINING WALL.
ALIGNMENT (700 mm OFFSET FROM EXISTING
TIMBER RETAINING WALL) PILE LOCATION AND
SETOUT TO BE CONFIRMED IN DETAIL DESIGN
STAGE TO AVOID CLASH WITH EXISTING TIMBER
POLES.

NOTES:
1. Locations of features approximate only
2. Original sheet size A3
3. Levels refer to provided survey data

TOTAL GROUND ENGINEERING
27C WAIPAREIRA AVENUE
HENDERSON
PH: 027 557 7234
njacka@tge.co.nz

PROJECT
**3 PIGEON MOUNTAIN RD
HALF MOON BAY AUCKLAND
DEVELOPMENT**

DRAWING TITLE
SITE PLAN

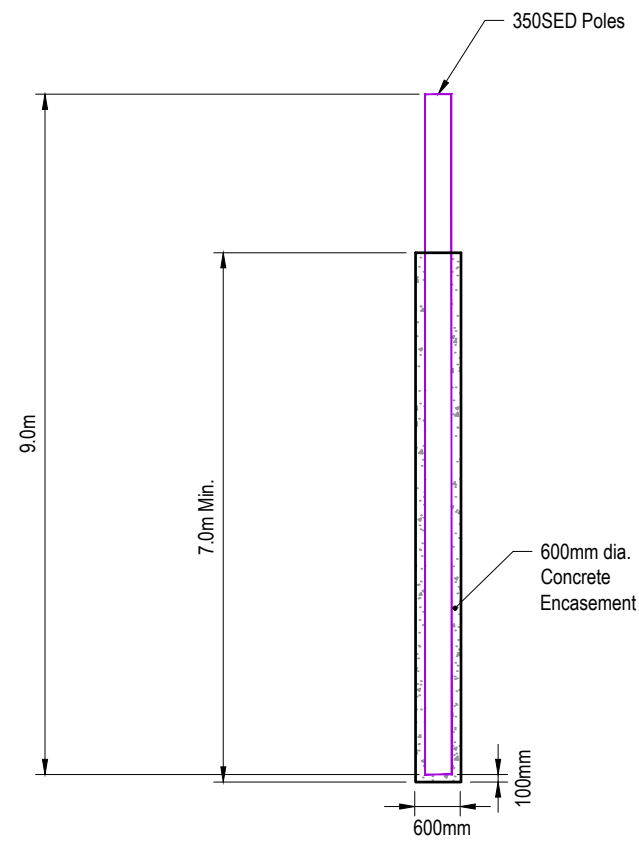
Date:	FEB 2026	6	17.02.2026	UPDATED AND ISSUED FOR RFI AND RC	HY
Cad Ref:	J00538 r6.dwg	5	19.12.2025	UPDATED AND ISSUED FOR RFI AND RC	HY
Designed	RK	4	01.05.2025	UPDATED AND ISSUED FOR RFI AND RC	HY
Drawn	HY	3	12.02.2024	UPDATED AND ISSUED FOR RFI AND RC	BL
Checked	NJ	2	30.09.2023	ISSUED FOR RFI AND RC	BL
		1	20.04.2023	ISSUED FOR RC	BL
		Issue	Date	Issue Description	By

Check all dimensions and levels on site before commencing construction.
This drawing and design remains the property of Total Ground Engineering and may not be reproduced without the written permission of Total Ground Engineering.

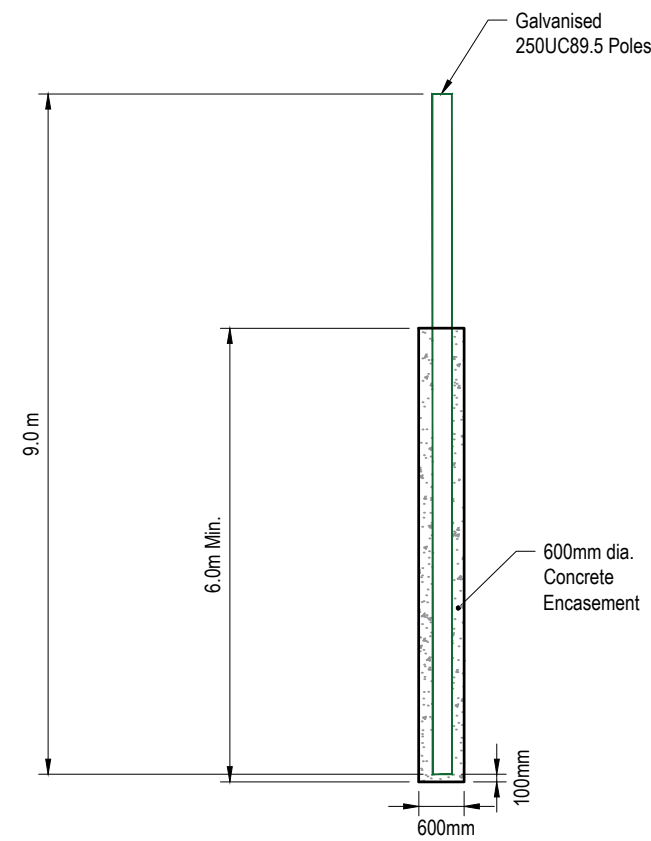
PAPER SIZE	A3	JOB No.	DWG No.	REV.
SCALE	1:600	J00538	010	6

NOTES:

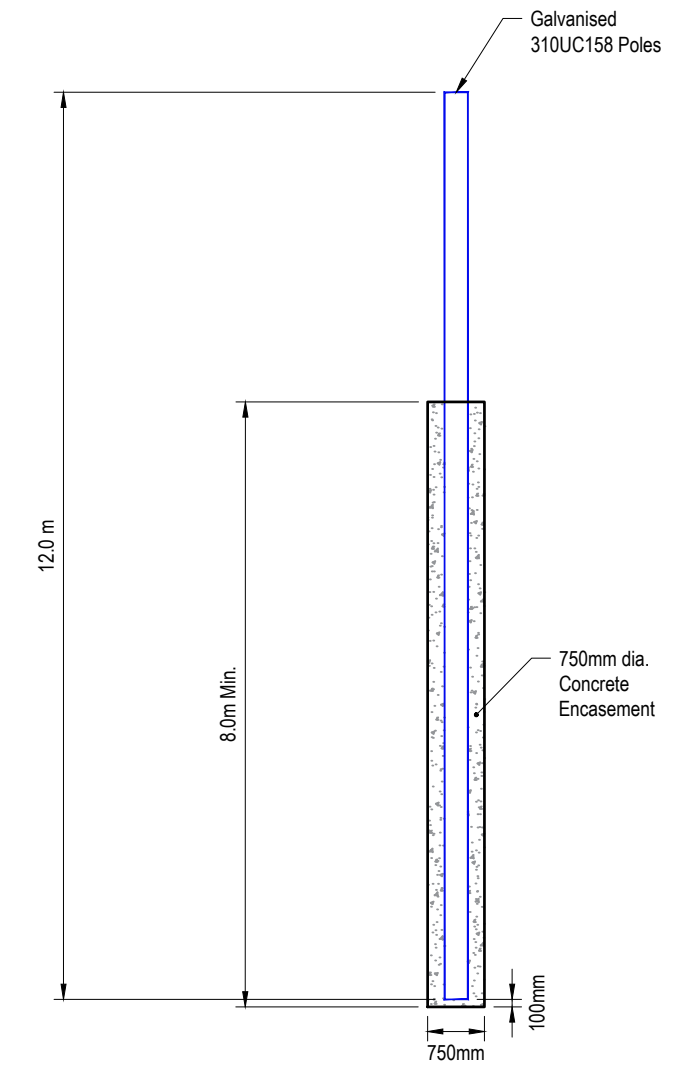
1. Pile diagrams are indicative only (Refer Sheet 201 for details).



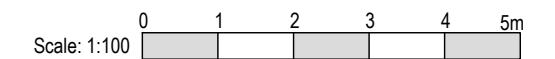
TYPE A
Typical 0 - 2.0 m Retaining Height



TYPE B
Typical 2.0 - 3.0 m Retaining Height



TYPE C
Typical 3.0 - 4.0 m Retaining Height



27C WAIPAREIRA AVENUE
HENDERSON
PH: 027 557 7234
njacka@tge.co.nz

PROJECT
**3 PIGEON MOUNTAIN RD
HALF MOON BAY AUCKLAND
DEVELOPMENT**

DRAWING TITLE
**NEW RETAINING WALL
PILE TYPES DIAGRAM**

Date:	FEB 2026
Cad Ref:	J00538 r6.dwg
Designed:	RK
Drawn:	HY
Checked:	NJ

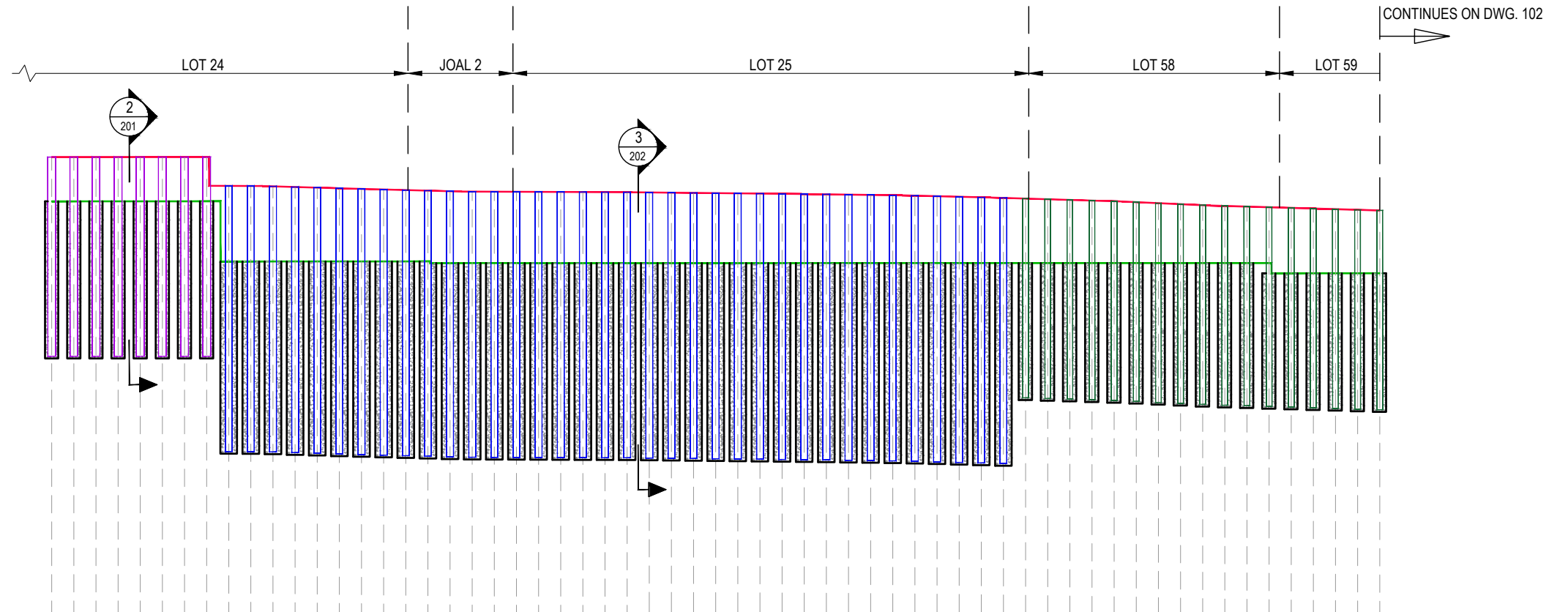
Issue	Date	Issue Description	By
6	17.02.2026	UPDATED AND ISSUED FOR RFI AND RC	HY
5	19.12.2025	UPDATED AND ISSUED FOR RFI AND RC	HY
4	01.05.2025	UPDATED AND ISSUED FOR RFI AND RC	HY
3	12.02.2024	UPDATED AND ISSUED FOR RFI AND RC	BL
2	30.09.2023	ISSUED FOR RFI AND RC	BL
1	20.04.2023	ISSUED FOR RC	BL

Check all dimensions and levels on site before commencing construction.
This drawing and design remains the property of Total Ground Engineering and may not be reproduced without the written permission of Total Ground Engineering.

PAPER SIZE	A3	JOB No.	DWG No.	REV.
SCALE	1:100	J00538	100	6

NOTES:

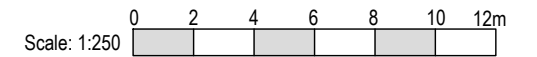
1. Pile face elevation to be confirmed in detail design stage with detailed survey information and design levels.
2. Wall alignment to be confirmed in detail design stage.



VERT EXAG 1:1
Datum mRL 0.00

DISTANCE	0.00	7.00	8.00	10.00	20.00	30.00	4.00	4.30	4.40	50.00	60.00
<u>TOP OF WALL LEVELS (m)</u>	20.64	20.64	19.34	19.32	19.07	19.01	18.87	18.79	18.76	18.56	18.23
<u>TOE OF WALL LEVELS (m)</u>	18.64	18.64	15.93	15.93	15.85	15.85	15.85	15.85	15.85	15.85	15.39
RETAINED HEIGHT (m)	2.00	2.00	3.41	3.39	3.22	3.16	3.02	2.94	2.91	2.71	2.84
PILE TYPE	TYPE A		TYPE C						TYPE B		
POLE LENGTH	9.0m		12.0m						9.0m		

CENTER OF PROP RET WALL LONG SECTION



27C WAIPAREIRA AVENUE
HENDERSON
PH: 027 557 7234
njacka@tge.co.nz

PROJECT
**3 PIGEON MOUNTAIN RD
HALF MOON BAY AUCKLAND
DEVELOPMENT**

DRAWING TITLE
**NEW RETAINING WALL
FACE ELEVATION 1 OF 2**

Date:	FEB 2026
Cad Ref:	J00538 r6.dwg
Designed:	RK
Drawn:	HY
Checked:	NJ

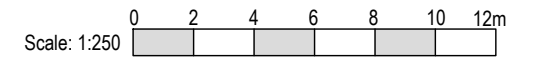
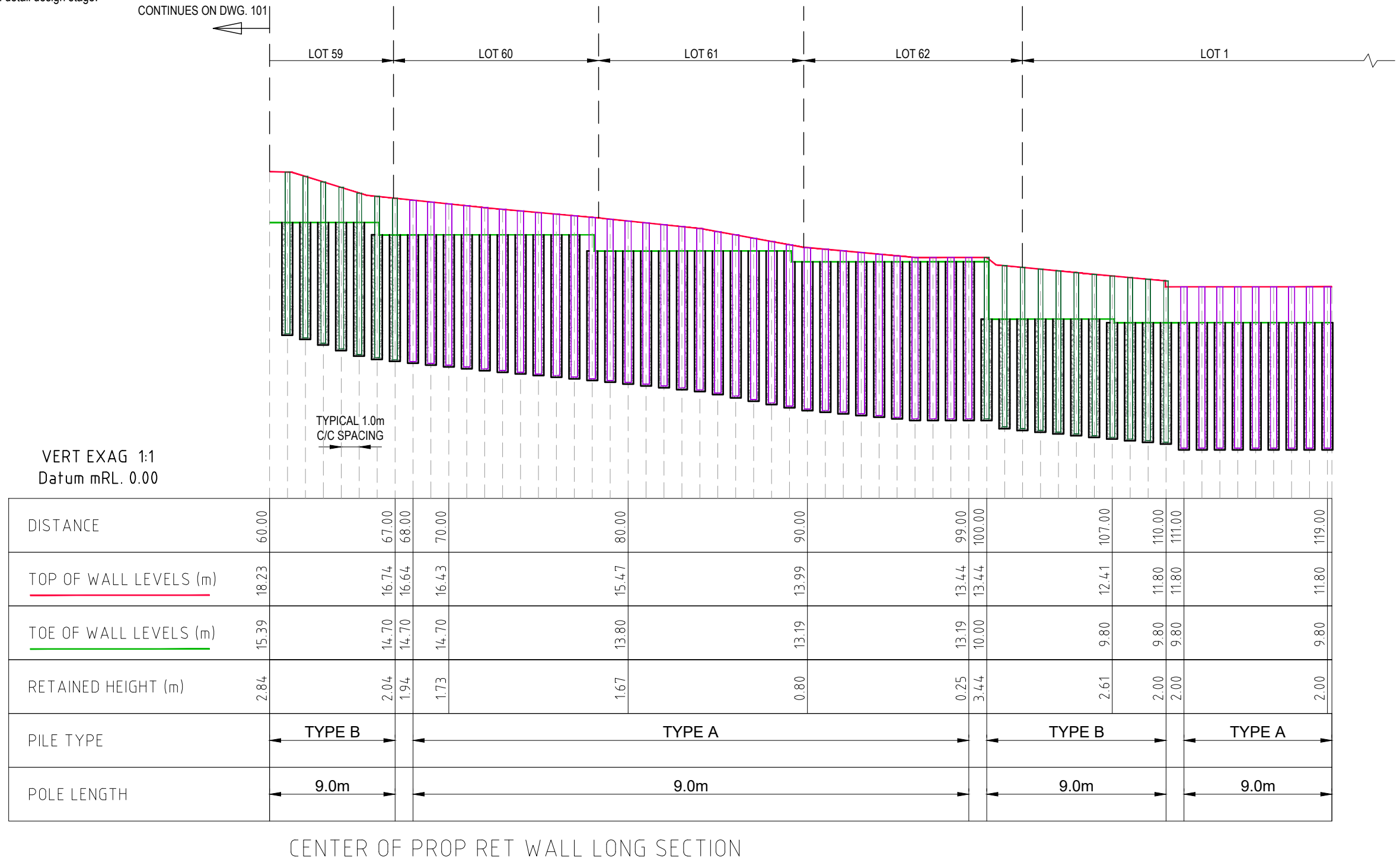
Issue	Date	Issue Description	By
6	17.02.2026	UPDATED AND ISSUED FOR RFI AND RC	HY
5	19.12.2025	UPDATED AND ISSUED FOR RFI AND RC	HY
4	01.05.2025	UPDATED AND ISSUED FOR RFI AND RC	HY
3	12.02.2024	UPDATED AND ISSUED FOR RFI AND RC	BL
2	29.09.2023	ISSUED FOR RFI AND RC	BL
1	20.04.2023	ISSUED FOR RC	BL

Check all dimensions and levels on site before commencing construction.
This drawing and design remains the property of Total Ground Engineering and may not be reproduced without the written permission of Total Ground Engineering.

PAPER SIZE	A3	JOB No.	DWG No.	REV.
SCALE	1:250	J00538	101	6

NOTES:

1. Pile face elevations to be confirmed in detail design stage with detailed survey information and design levels.
2. Wall alignment to be confirmed in detail design stage.



27C WAIPAREIRA AVENUE
HENDERSON
PH: 027 557 7234
njacka@tge.co.nz

PROJECT
**3 PIGEON MOUNTAIN RD
HALF MOON BAY AUCKLAND
DEVELOPMENT**

DRAWING TITLE
**NEW RETAINING WALL
FACE ELEVATION 2 OF 2**

Date:	FEB 2026
Cad Ref:	J00538 r6.dwg
Designed:	RK
Drawn:	HY
Checked:	NJ

Issue	Date	Issue Description	By
6	17.02.2026	UPDATED AND ISSUED FOR RFI AND RC	HY
5	19.12.2025	UPDATED AND ISSUED FOR RFI AND RC	HY
4	01.05.2025	UPDATED AND ISSUED FOR RFI AND RC	HY
3	12.02.2024	UPDATED AND ISSUED FOR RFI AND RC	BL
2	30.09.2023	ISSUED FOR RFI AND RC	BL
1	20.04.2023	ISSUED FOR RC	BL

Check all dimensions and levels on site before commencing construction.
This drawing and design remains the property of Total Ground Engineering and may not be reproduced without the written permission of Total Ground Engineering.

PAPER SIZE	A3	JOB No.	DWG No.	REV.
SCALE	1:250	J00538	102	6

SPECIFICATION:

1. MATERIAL PROPERTIES

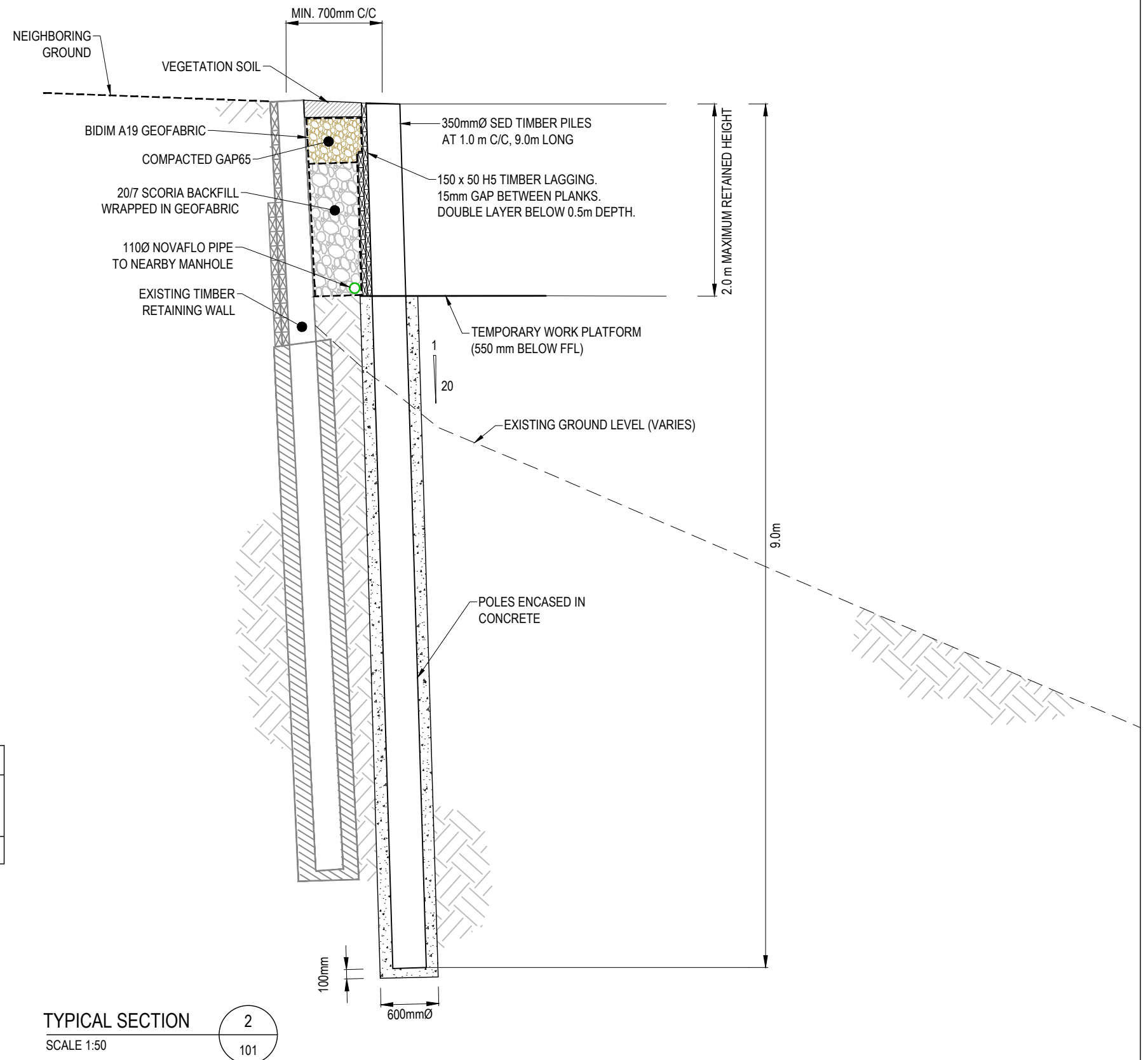
- CONCRETE: CHARACTERISTIC COMPRESSIVE STRENGTH F'C = 30 MPa UNLESS OTHERWISE NOTED.
- DRAIN COIL: 110mm DIAMETER
- GEOFABRIC: BIDIM A19
- DRAINAGE AGGREGATE: SINGLE/DUAL GRADED (IE. DRAINAGE 40, DRAINAGE 20/40, SGC 25/7) ENCAPSULATED IN BIDIM A19 (OR SIMILAR) FILTER CLOTH OR, SELF FILTERING AGGREGATE (IE. SAP50 EX TAUPO/KAMO)

- 2. MINIMUM CONCRETE COVER TO STEEL POLES IS 75mm WITH A MINIMUM COVER OF 100mm AT THE PILE BASE. THIS WILL REQUIRE EITHER A PACKER OR POURING OF A PUNCH PAD TO ACHIEVE DESIGN.
- 3. ENDS OF CUT RAILS SHALL BE FLOODED WITH A COPPER NAPHTHENATE TYPE WOOD PRESERVATIVE.
- 4. THE MAXIMUM RETAINING HEIGHT AND SURCHARGE SLOPE SHALL BE AS SPECIFIED ON THE DESIGN AND SHALL NOT BE EXCEEDED UNLESS APPROVED BY THE DESIGN ENGINEER.
- 5. THE EXTENT OF EXCAVATION REQUIRED SHALL BE MARKED OUT ON THE GROUND HAVING REGARD TO THE POSITIONS OF POLES, WORKING SPACE FOR CONSTRUCTION, BACKFILL AND DRAINAGE PROVISIONS.
- 6. A PERFORATED SUBSOIL DRAIN WITH FILTER SOCK SHALL BE LAID AND SURROUNDED IN APPROVED DRAINAGE-GRADED AGGREGATE OR SCORIA WITH INVERT BELOW TOE GROUND LEVELS CONNECTED TO A FREE OUTLET AT A POINT OF SAFE DISCHARGE OR CONNECTED TO STORMWATER SYSTEM.
- 7. THE CONTRACTOR SHALL REFER TO THE DESIGN ENGINEER AS SOON AS POSSIBLE FOR FURTHER INSTRUCTION SHOULD ANY UNFORESEEN CIRCUMSTANCE OR ABNORMAL SITE CONDITION BE ENCOUNTERED DURING CONSTRUCTION.
- 8. HORIZONTAL ALIGNMENT OF POLES SHALL VARY BY NO MORE THAN 25mm WHEN PLACING A STRAIGHT-EDGE ACROSS THE FRONT FACE OF THREE CONSECUTIVE POLES.

NOTES:

1. TABLE OF PILE SIZE:

TIMBER PILE						
	HOLE DIA.	SIZE	LENGTH	SPACING	MAX. RETAINED HEIGHT	MIN. EMBEDMENT DEPTH
TYPE A	600mm Ø	350 SED HD	9.0m	1.0m	2.0m	7.0m



TOTAL GROUND ENGINEERING

27C WAIPAREIRA AVENUE
HENDERSON

PH: 027 557 7234
njacka@tge.co.nz

PROJECT
**3 PIGEON MOUNTAIN RD
HALF MOON BAY AUCKLAND
DEVELOPMENT**

DRAWING TITLE
TYPICAL SECTION 2

Date:	FEB 2026
Cad Ref:	J00538 r6.dwg
Designed:	RK
Drawn:	HY
Checked:	NJ

Issue	Date	Issue Description	By
6	17.02.2026	UPDATED AND ISSUED FOR RFI AND RC	HY
5	19.12.2025	UPDATED AND ISSUED FOR RFI AND RC	HY
4	01.05.2025	UPDATED AND ISSUED FOR RFI AND RC	HY
3	12.02.2024	UPDATED AND ISSUED FOR RFI AND RC	BL
2	30.09.2023	ISSUED FOR RFI AND RC	-
1	20.04.2023	ISSUED FOR RC	BL

Check all dimensions and levels on site before commencing construction.
This drawing and design remains the property of Total Ground Engineering and may not be reproduced without the written permission of Total Ground Engineering.

PAPER SIZE	A3	JOB No.	DWG No.	REV.
SCALE	1:50	J00538	201	6

SPECIFICATION:

1. MATERIAL PROPERTIES

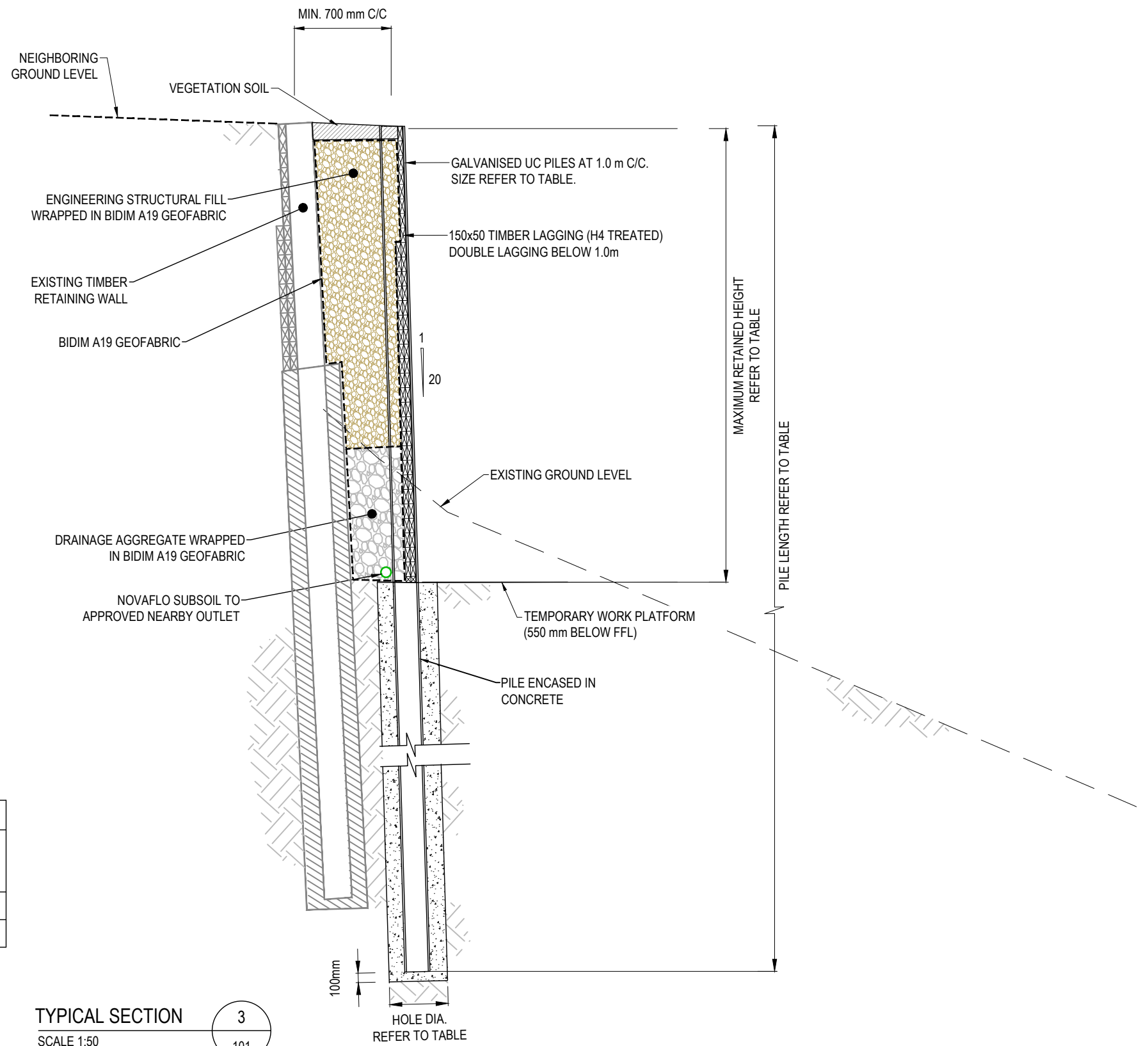
- CONCRETE: CHARACTERISTIC COMPRESSIVE STRENGTH F'C = 30 MPa UNLESS OTHERWISE NOTED.
- STEEL UC'S: GRADE 300 MINIMUM.
- DRAIN COIL: 110mm DIAMETER
- GEOFABRIC: BIDIM A19
- DRAINAGE AGGREGATE: SINGLE/DUAL GRADED (IE. DRAINAGE 40, DRAINAGE 20/40, SGC 25/7) ENCAPSULATED IN BIDIM A19 (OR SIMILAR) FILTER CLOTH OR, SELF FILTERING AGGREGATE (IE. SAP50 EX TAUPO/KAMO)
- GALVANISING: ALL STEEL TO BE GALVANISED TO AS/NZS4680 GRADE HDG 900

2. MINIMUM CONCRETE COVER TO STEEL POLES IS 75mm WITH A MINIMUM COVER OF 100mm AT THE PILE BASE. THIS WILL REQUIRE EITHER A PACKER OR POURING OF A PUNCH PAD TO ACHIEVE DESIGN.
3. ENDS OF CUT RAILS SHALL BE FLOODED WITH A COPPER NAPHTHENATE TYPE WOOD PRESERVATIVE.
4. THE MAXIMUM RETAINING HEIGHT AND SURCHARGE SLOPE SHALL BE AS SPECIFIED ON THE DESIGN AND SHALL NOT BE EXCEEDED UNLESS APPROVED BY THE DESIGN ENGINEER.
5. THE EXTENT OF EXCAVATION REQUIRED SHALL BE MARKED OUT ON THE GROUND HAVING REGARD TO THE POSITIONS OF POLES, WORKING SPACE FOR CONSTRUCTION, BACKFILL AND DRAINAGE PROVISIONS.
6. A PERFORATED SUBSOIL DRAIN WITH FILTER SOCK SHALL BE LAID AND SURROUNDED IN APPROVED DRAINAGE-GRADED AGGREGATE OR SCORIA WITH INVERT BELOW TOE GROUND LEVELS CONNECTED TO A FREE OUTLET AT A POINT OF SAFE DISCHARGE OR CONNECTED TO STORMWATER SYSTEM.
7. THE CONTRACTOR SHALL REFER TO THE DESIGN ENGINEER AS SOON AS POSSIBLE FOR FURTHER INSTRUCTION SHOULD ANY UNFORESEEN CIRCUMSTANCE OR ABNORMAL SITE CONDITION BE ENCOUNTERED DURING CONSTRUCTION.
8. HORIZONTAL ALIGNMENT OF POLES SHALL VARY BY NO MORE THAN 25mm WHEN PLACING A STRAIGHT-EDGE ACROSS THE FRONT FACE OF THREE CONSECUTIVE POLES.

NOTES:

1. TABLE OF PILE SIZES:

STEEL UC PILE						
	HOLE DIA.	SIZE	LENGTH	SPACING	MAX. RETAINED HEIGHT	MIN. EMBEDMENT DEPTH
TYPE B	600mm Ø	250UC89.5	9.0m	1.0m	3.0m	6.0m
TYPE C	750mm Ø	310UC158	12.0m	1.0m	4.0m	8.0m



TOTAL GROUND ENGINEERING
 27C WAIPAREIRA AVENUE
 HENDERSON
 PH: 027 557 7234
 njacka@tge.co.nz

PROJECT
**3 PIGEON MOUNTAIN RD
 HALF MOON BAY AUCKLAND
 DEVELOPMENT**

DRAWING TITLE
TYPICAL SECTION 3




Date:	FEB 2026		
Cad Ref:	J00538 r6.dwg		
Designed:	RK		
Drawn:	HY		
Checked:	NJ		
Issue	Date	Issue Description	By
6	17.02.2026	UPDATED AND ISSUED FOR RFI AND RC	HY
5	19.12.2025	UPDATED AND ISSUED FOR RFI AND RC	HY
4	01.05.2025	UPDATED AND ISSUED FOR RFI AND RC	HY
3	12.02.2024	UPDATED AND ISSUED FOR RFI AND RC	BL
2	30.09.2023	ISSUED FOR RFI AND RC	-
1	20.04.2023	ISSUED FOR RC	BL

Check all dimensions and levels on site before commencing construction.
 This drawing and design remains the property of Total Ground Engineering and may not be reproduced without the written permission of Total Ground Engineering.

PAPER SIZE	A3	JOB No.	DWG No.	REV.
SCALE	1:50	J00538	202	6



LEGEND:

-  DMxx Wall Deflection Monitoring Points
-  BSxx Building Settlement Monitoring Points
-  GSxx Ground Settlement Monitoring Points

NOTES:

1. Locations of features approximate only.
2. Original sheet size A3.
3. Levels refer to provided survey data.
4. Existing dwellings and stormwater pipes to be pre-construction condition surveyed as a baseline report.



27C WAIPAREIRA AVENUE
HENDERSON
PH: 027 557 7234
njacka@tge.co.nz

PROJECT
**3 PIGEON MOUNTAIN RD
HALF MOON BAY AUCKLAND
DEVELOPMENT**

DRAWING TITLE
MONITORING PLAN

Date:	FEB 2026
Cad Ref:	J00538 r6.dwg
Designed:	RK
Drawn:	HY
Checked:	NJ

Issue	Date	Issue Description	By
6	17.02.2026	UPDATED AND ISSUED FOR RFI AND RC	HY
5	19.12.2025	UPDATED AND ISSUED FOR RFI AND RC	HY
4	12.02.2024	UPDATED AND ISSUED FOR RFI AND RC	BL
3	24.11.2023	ISSUED FOR RFI AND RC	BL
2	30.09.2023	ISSUED FOR RFI AND RC	BL
1	20.04.2023	ISSUED FOR RC	BL

Check all dimensions and levels on site before commencing construction.
This drawing and design remains the property of Total Ground Engineering and may not be reproduced without the written permission of Total Ground Engineering.

PAPER SIZE	A3	JOB No.	DWG No.	REV.
SCALE	1:600	J00538	300	6