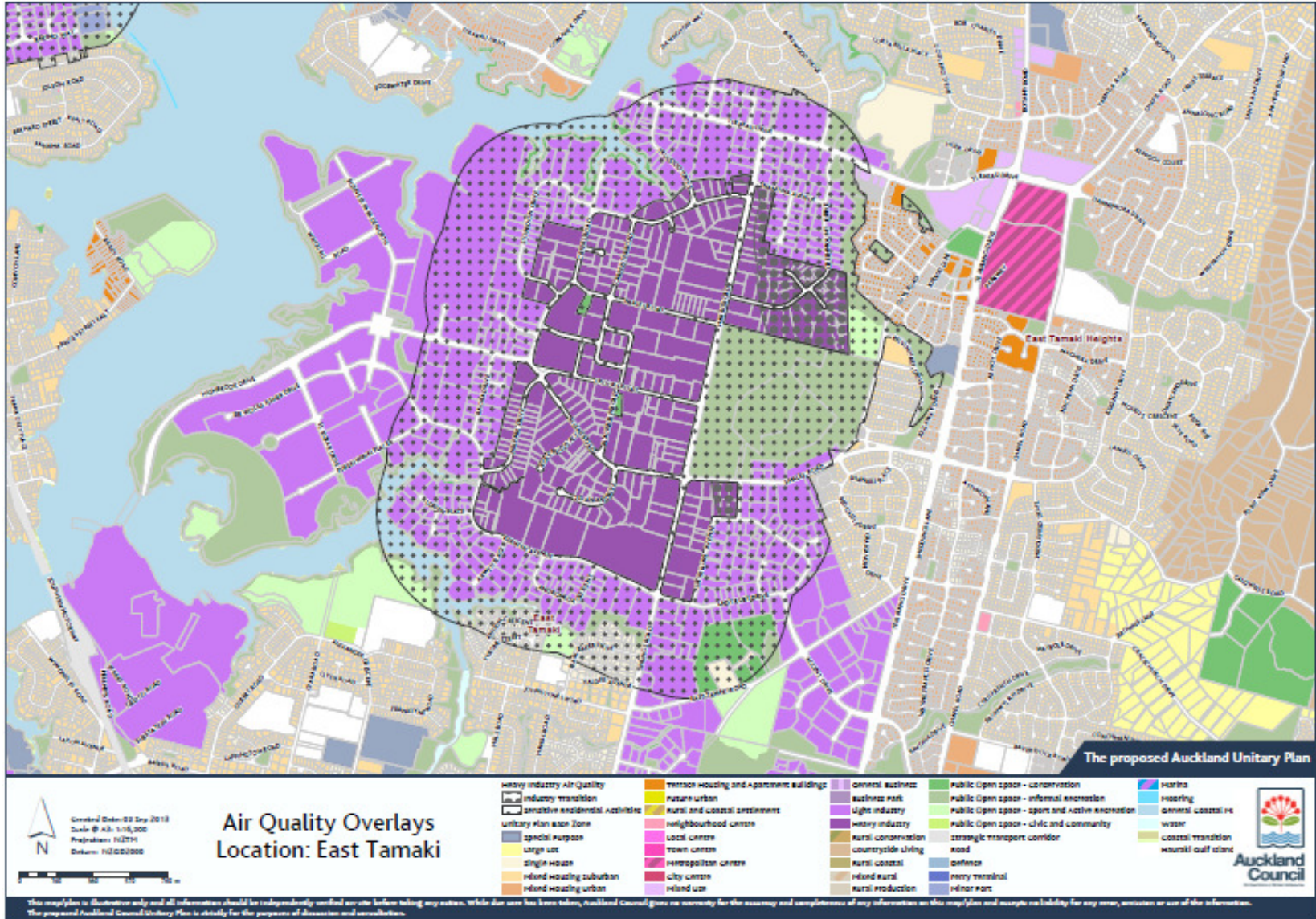
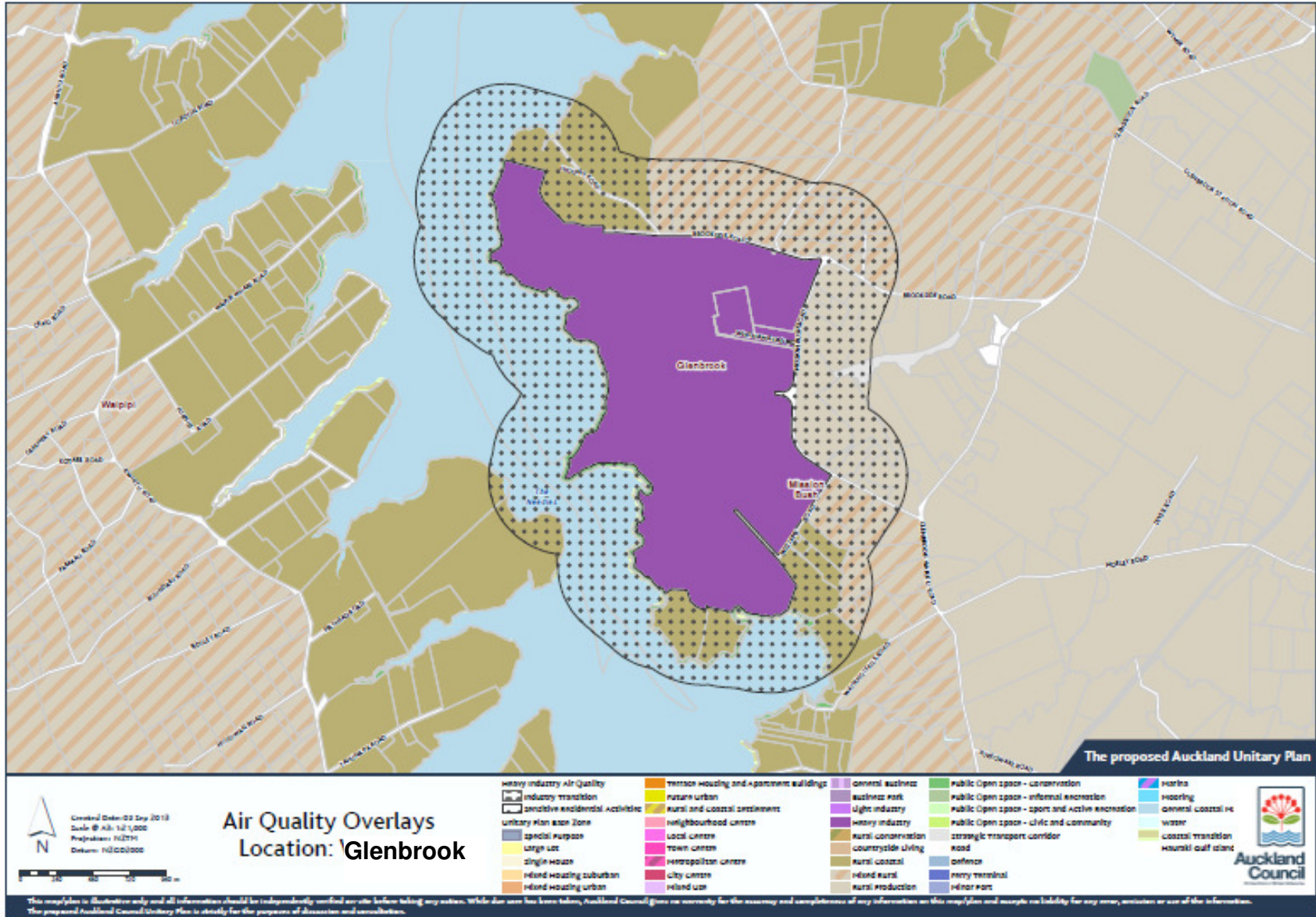


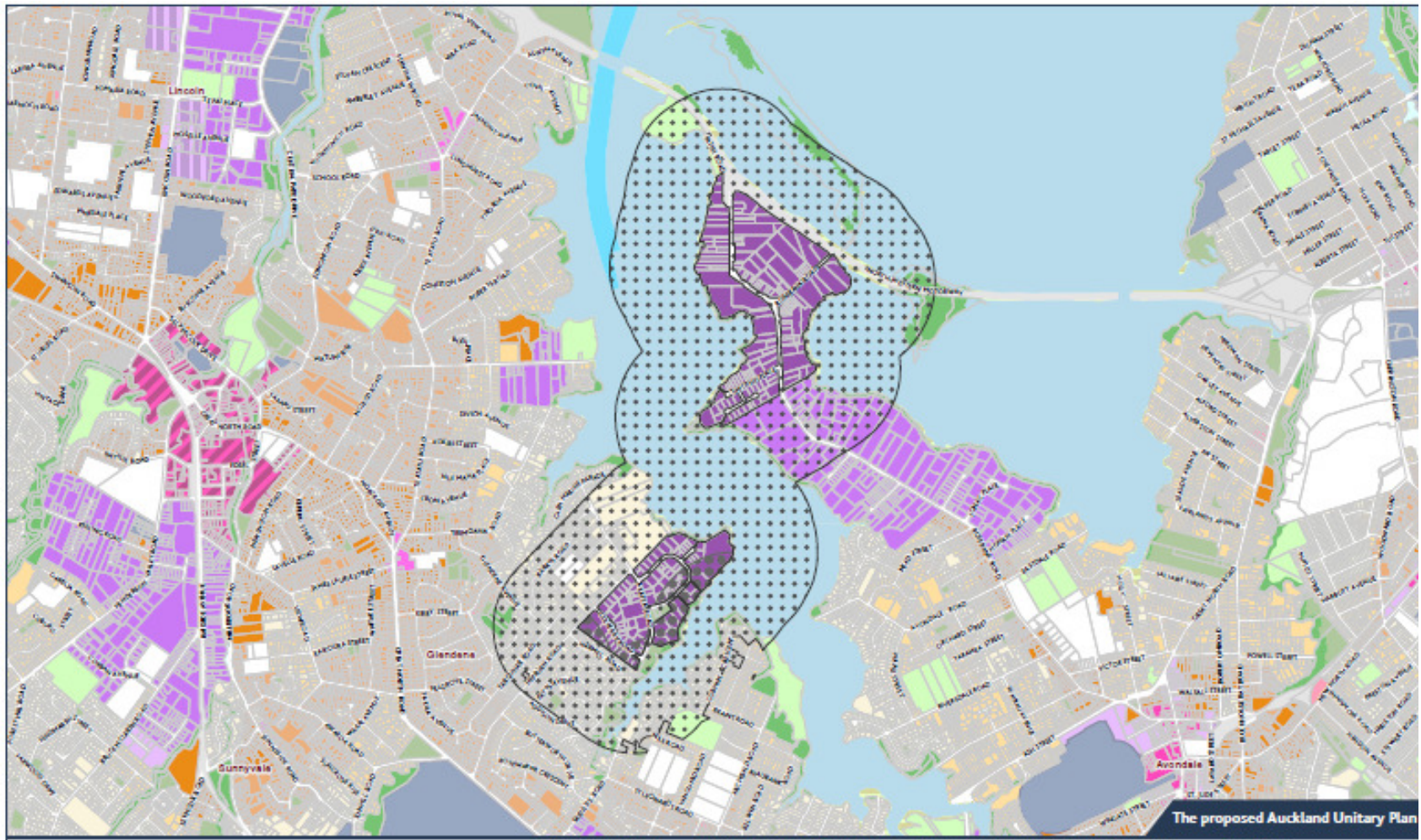
# Appendix 3.45.1 Proposed Heavy Industry Zones











The proposed Auckland Unity Plan


 Created Date: 03 Sep 2018  
 Scale: 1:100,000  
 Projection: NZTM  
 Datum: NZGD2000



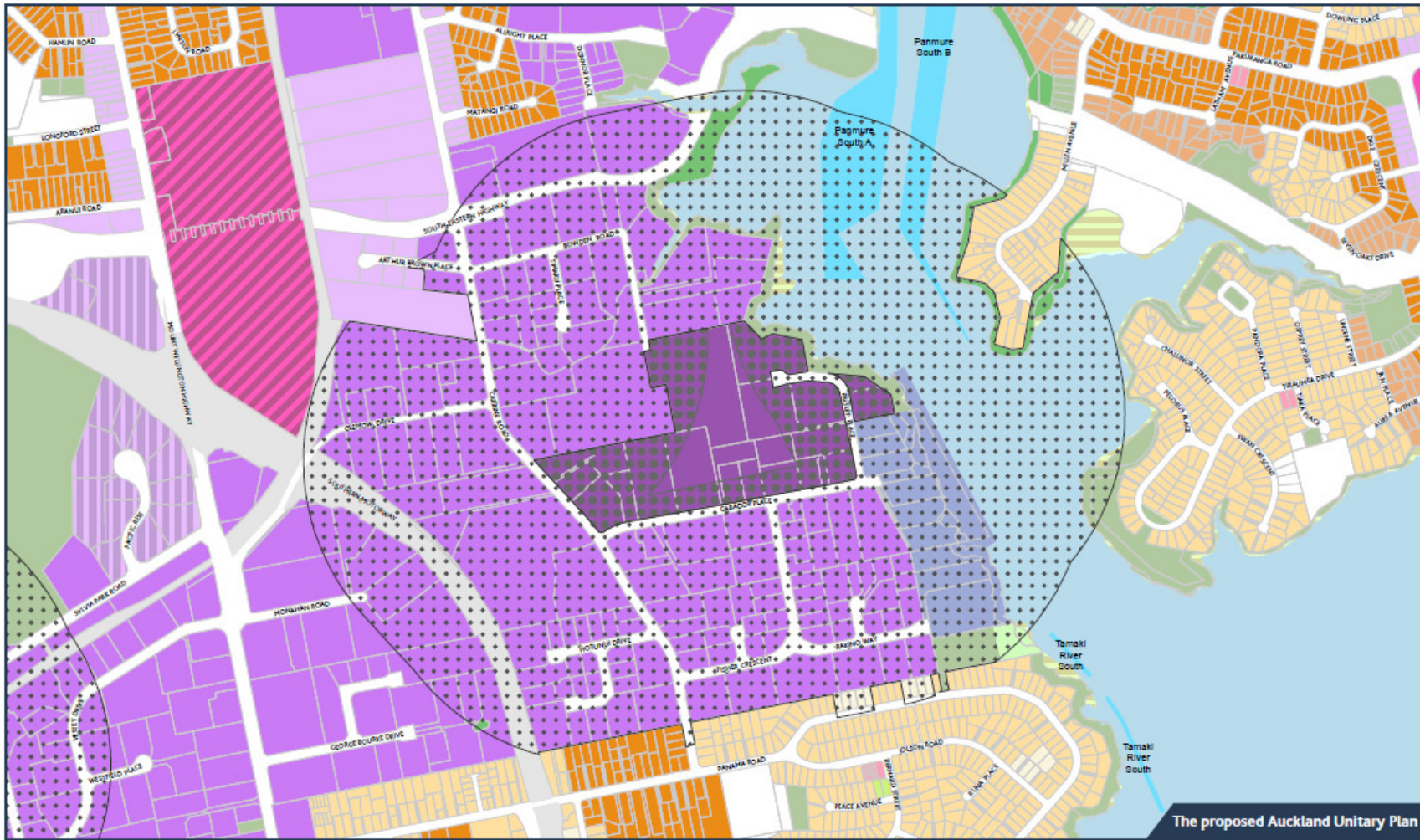
### Air Quality Overlays Location: Rosebank

heavy industry Air Quality	residential housing and garages buildings	general business	public open space - conservation	harbours
industry transition	future urban	business park	public open space - informal recreation	hoarding
residential incidental activities	rural and coastal settlements	light industry	public open space - sports and active recreation	general coastal reserve
unity plan zone	neighbourhood centres	heavy industry	public open space - civic and community	water
special purpose zone	local centres	rural conservation	strategic transport corridor	coastal transition
large lot	town centres	countryside living	road	haemul out stand
single house	metropolitan centres	rural coastal	refuse	
residential housing suburban	city centres	residential rural	heavy terminal	
residential housing urban	inland use	rural production	minor port	



This mapfile is illustrative only and all information should be independently verified prior to taking any action. While due care has been taken, Auckland Council gives no warranty for the accuracy and completeness of any information on this mapfile and accepts no liability for any error, omission or use of the information. The proposed Auckland Council Unity Plan is solely for the purposes of discussion and consultation.





The proposed Auckland Unitary Plan

Created Date: 05 Sep 2013  
 Scale @ A3: 1:7,500  
 Projection: NZTM  
 Datum: NZGD2000

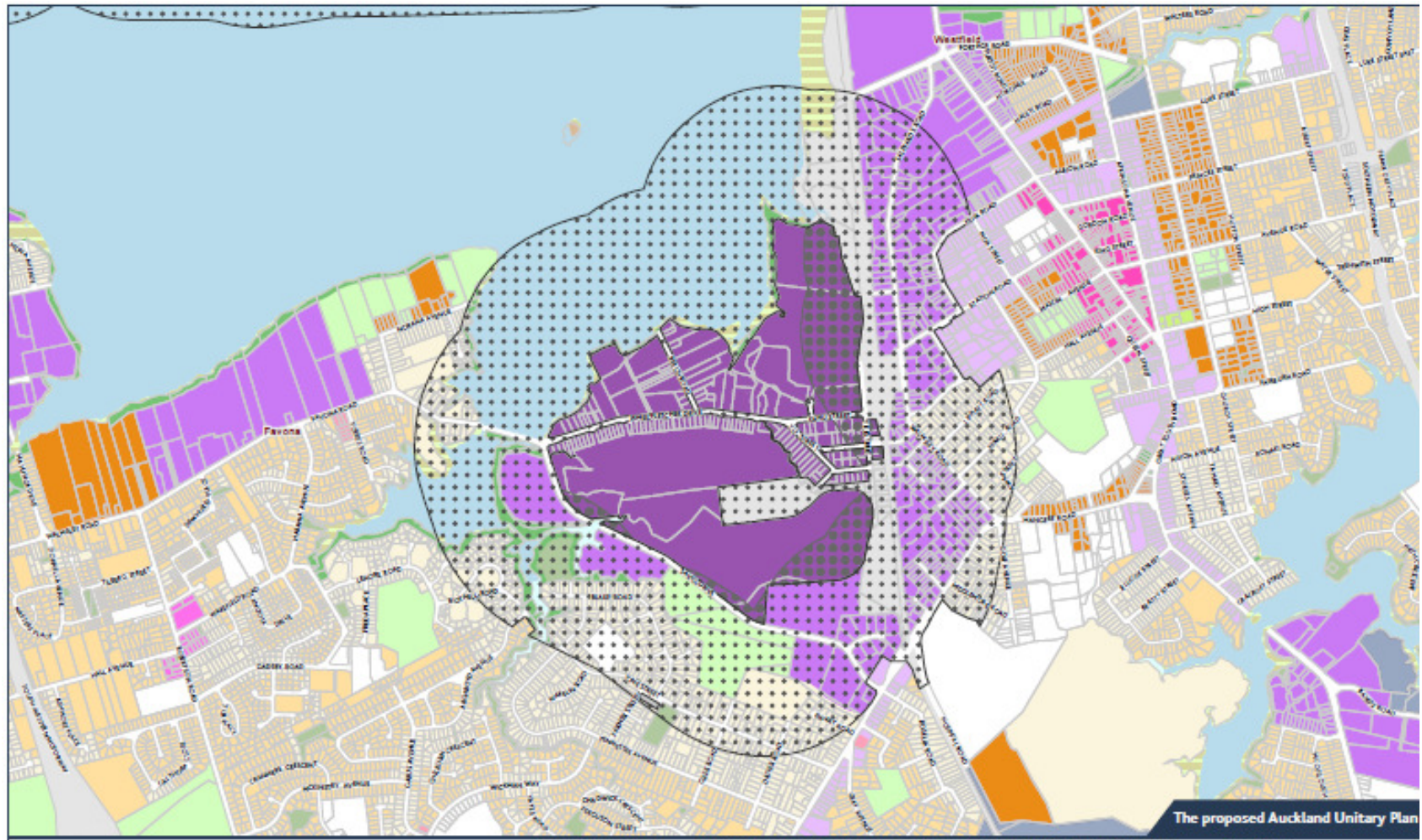
### Air Quality Overlays Location: Mount Wellington

<ul style="list-style-type: none"> <li>Heavy Industry Air Quality</li> <li>Industry Transition</li> <li>Sensitive Residential Activities</li> <li>Unitary Plan Base Zone:           <ul style="list-style-type: none"> <li>Special Purpose</li> <li>Large Lot</li> <li>Single House</li> <li>Mixed Housing Suburban</li> <li>Mixed Housing Urban</li> </ul> </li> </ul>	<ul style="list-style-type: none"> <li>Terrace Housing and Apartment Buildings</li> <li>Future Urban</li> <li>Rural and Coastal Settlement</li> <li>Neighbourhood Centre</li> <li>Local Centre</li> <li>Town Centre</li> <li>Metropolitan Centre</li> <li>City Centre</li> <li>Mixed Use</li> </ul>	<ul style="list-style-type: none"> <li>General Business</li> <li>Business Park</li> <li>Light Industry</li> <li>Heavy Industry</li> <li>Rural Conservation</li> <li>Countryside Living</li> <li>Rural Coastal</li> <li>Mixed Rural</li> <li>Rural Production</li> </ul>	<ul style="list-style-type: none"> <li>Public Open Space - Conservation</li> <li>Public Open Space - Informal Recreation</li> <li>Public Open Space - Sport and Active Recreation</li> <li>Public Open Space - Civic and Community</li> <li>Strategic Transport Corridor</li> <li>Road</li> <li>Defence</li> <li>Ferry Terminal</li> <li>Minor Port</li> </ul>	<ul style="list-style-type: none"> <li>Marine</li> <li>Mooring</li> <li>General Coastal M</li> <li>Water</li> <li>Coastal Transition</li> <li>Heuriki Gulf Islands</li> </ul>
---	---	---	--	---



This map/plan is illustrative only and all information should be independently verified on-site before taking any action. While due care has been taken, Auckland Council gives no warranty for the accuracy and completeness of any information on this map/plan and accepts no liability for any error, omission or use of the information. The proposed Auckland Council Unitary Plan is strictly for the purposes of discussion and consultation.





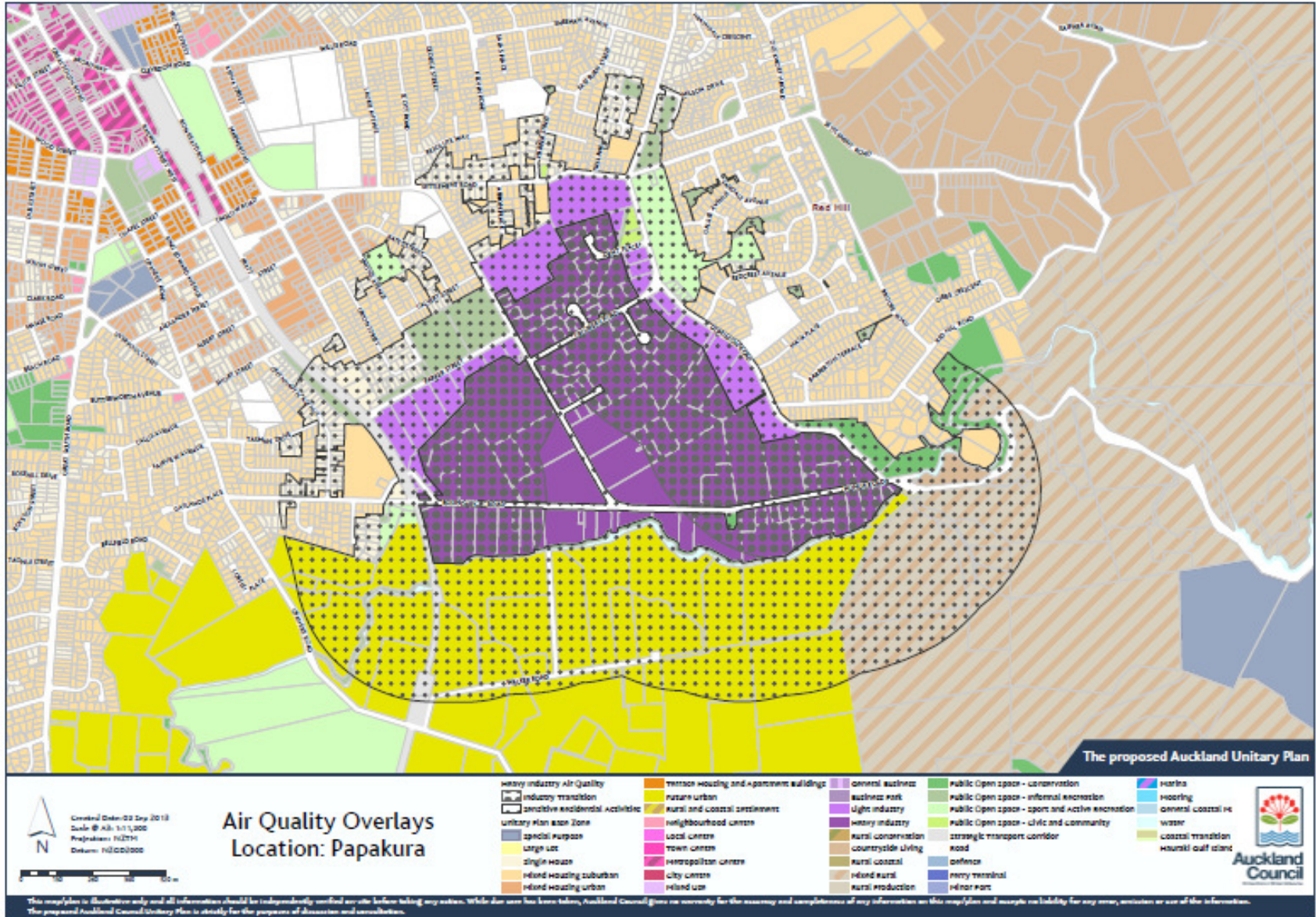
### Air Quality Overlays Location: Otahuhu

heavy industry Air Quality	residential housing and apartment buildings	general business	public open space - conservation	harbour
industry transition	residential urban	business park	public open space - informal recreation	mooring
sensitive residential activities	rural and coastal settlements	light industry	public open space - sports and active recreation	general coastal re-water
unitary plan zone	neighbourhood centres	heavy industry	public open space - civic and community	coastal transition
special purpose	local centres	rural conservation	strategic transport corridor	Maori oiaf land
large lot	town centres	countryside living	road	
single house	metropolitan centres	rural coastal	preference	
inland housing suburban	city centres	inland rural	heavy terminal	
inland housing urban	inland use	rural production	minor port	

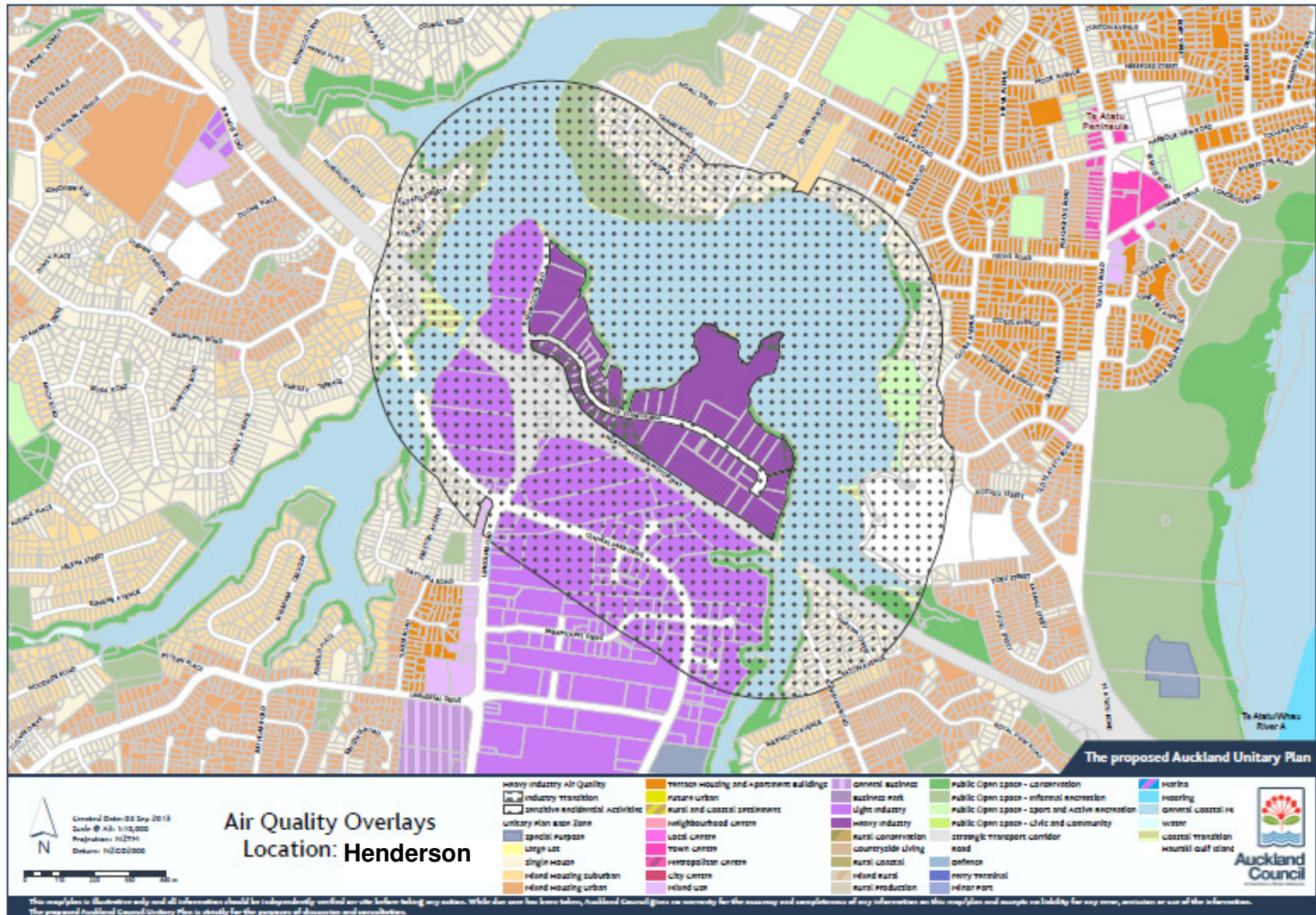


This mapfile is illustrative only and all information should be independently verified on-site before taking any action. While due care has been taken, Auckland Council gives no warranty for the accuracy and completeness of any information on this mapfile and accepts no liability for any error, omission or use of the information. The proposed Auckland Council Unitary Plan is subject for the purposes of discussion and consultation.

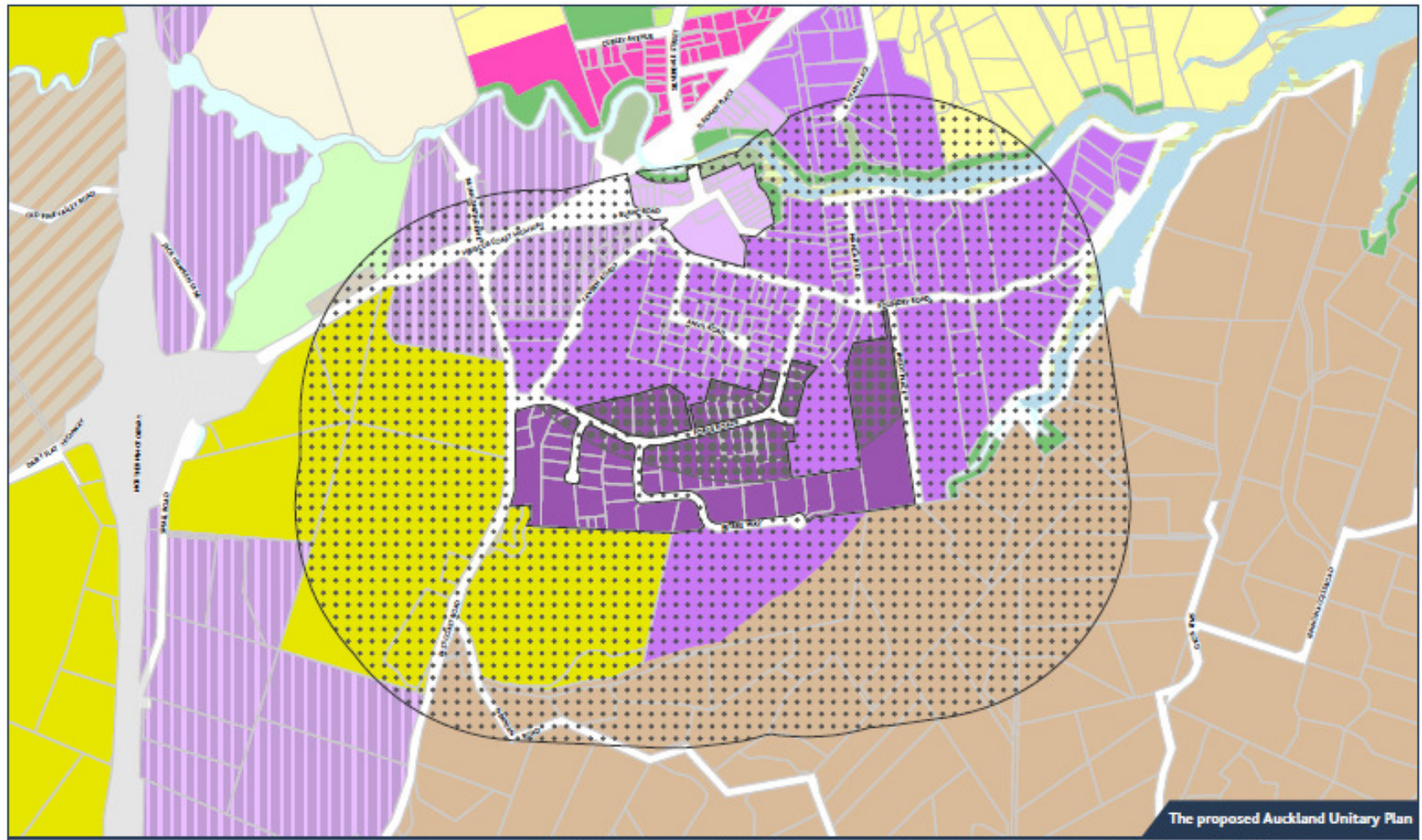












The proposed Auckland Unitary Plan


  
 Created Date: 03 Sep 2018  
 Scale: 1:10,000  
 Projection: NZTM  
 Datum: NZGD2000

### Air Quality Overlays Location: Silverdale

heavy industry Air Quality	terrace housing and apartment buildings	general business	public Open space - conservation	harbour
industry transition	future urban	business park	public Open space - informal recreation	hoarding
sensitive residential aesthetic	rural and coastal settlement	light industry	public Open space - sports and active recreation	general coastal use
unitary plan zone Zone	neighbourhood centre	heavy industry	public Open space - civic and community	water
special purpose	local centre	rural conservation	strategic transport corridor	coastal transition
large lot	town centre	countryside living	road	harbour outfall
single house	metropolitan centre	rural coastal	defence	
residential housing suburban	city centre	residential rural	heavy terminal	
residential housing urban	residential use	rural production	minor port	

This map plan is illustrative only and all information should be independently verified on-site before taking any action. While due care has been taken, Auckland Council gives no warranty for the accuracy and completeness of any information on this map plan and accepts no liability for any error, omission or use of the information. The proposed Auckland Council Unitary Plan is strictly for the purposes of discussion and consultation.





