

Memo

Date 26/11/2025

To: Craig Cairncross – Team Leader Central South
 CC: Nico Donovan-Pereira – Senior Specialist Māori Heritage
 From: Matthew Gouge – Senior Policy Planner – Central and South

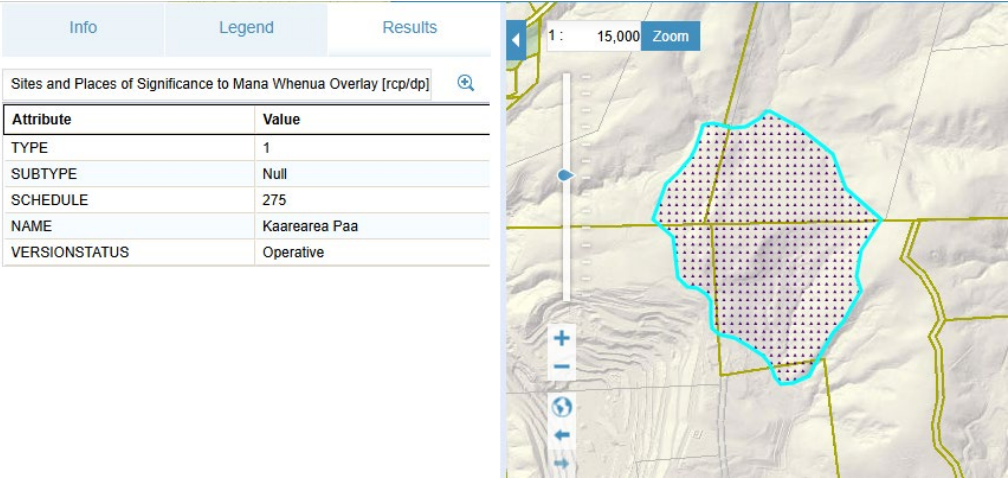
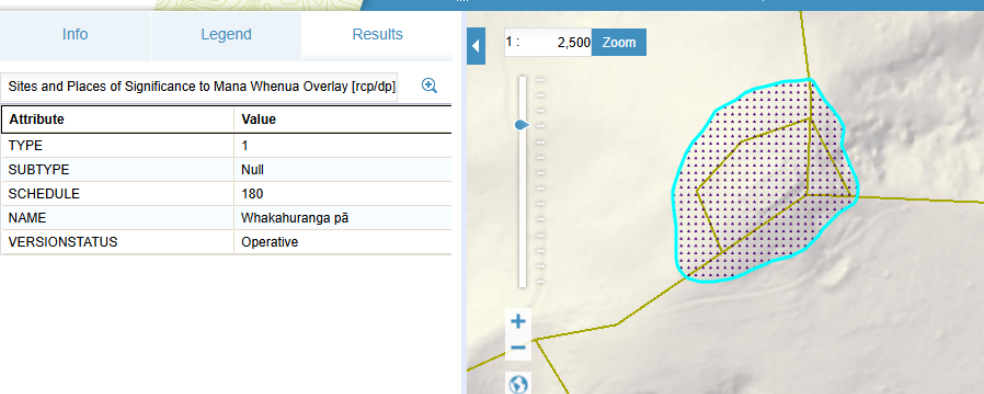
Subject: **Plan Modification: Clause 20A error correction to Auckland Unitary Plan (Operative in Part 2016) or Hauraki Gulf Islands District Plan (Operative 2018)**


I seek your approval to correct an error pursuant to clause 20A, schedule 1, Resource Management Act 1991:

A local authority may amend, without using the process in this schedule, an operative policy statement or plan to correct any minor errors.

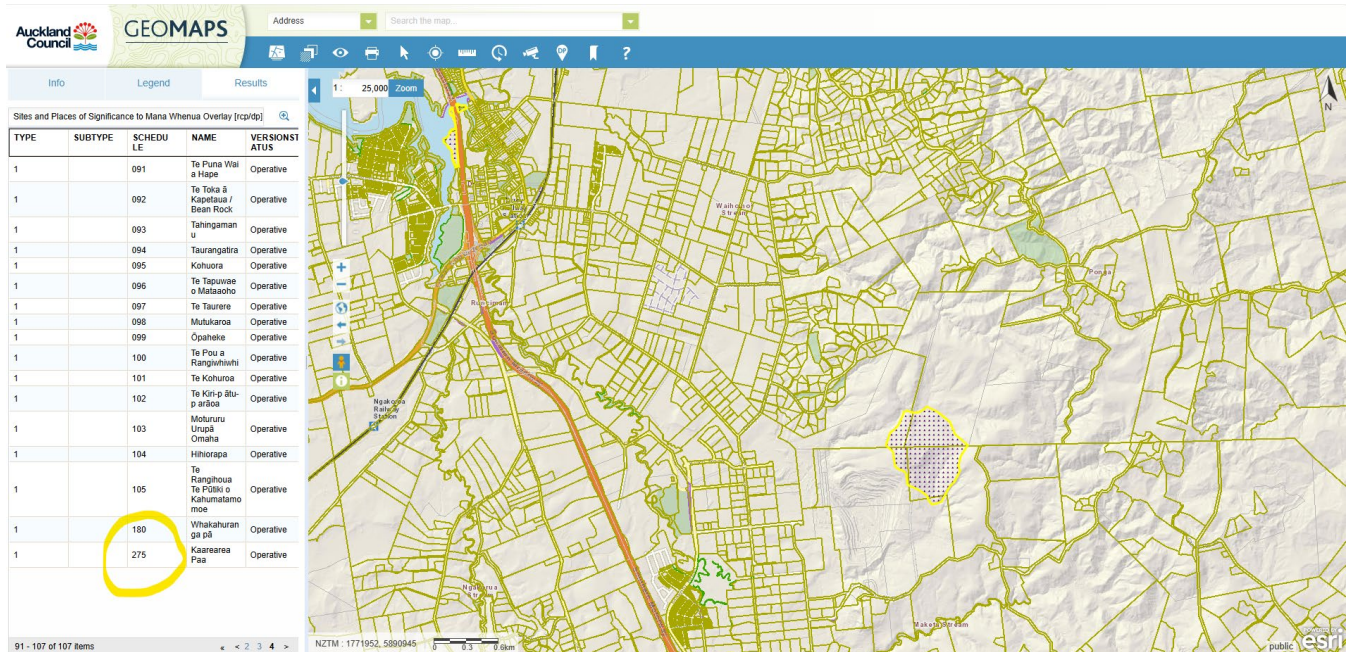
You have delegated authority, as a tier four manager, to make a decision to correct an error under clause 20A. Schedule 2A of the Auckland Council Combined Chief Executives Delegation Register authorises all powers, functions, and duties under RMA's first schedule (except clause 17 which cannot be delegated) to tier four positions.

Provision in AUP or HGI District Plan	Site and Places of Significance to Mana Whenua Overlay Schedule ID numbers in Geomaps (two sites only)
Subject site and legal description (if applicable)	Kaarearea Paa – 206 Peach Road, Drury Whakahuranga Pā – Lot 1 DP 211035, Journeys End Tapora 0977
Nature of error	Incorrect Schedule ID listed in Geomaps for two scheduled sites of significance. This results in a discrepancy between the Geomaps Schedule ID reference and the Schedule 12 text.
Effect of change	<p>The change is to correct the Schedule ID number appearing in Geomaps only so that it matches the Schedule 12 text.</p> <p>The change is minor and will only result in the ID reference for the scheduled sites in Geomaps matching the Schedule 12 text. It will have no effect on the rights and interests of plan users as it is an administrative change only to enhance the plan usability.</p>
Changes required to be made (text and/or in-text)	Amend the Schedule ID in Geomaps for Kaarearea Paa and Whakahuranga Pā to match Schedule 12 ID for these respective sites (as illustrated in the following sections).

diagrams)	
Changes required to be made (AUP or HGI maps)	<p>Amend the Sites and Places of Significance to Mana Whenua Overlay Schedule IDs in Geomaps for Kaarearea Paa and Whakahuranga Pā.</p> <p>Kaarearea Paa: Change Schedule ID from 275 to 110</p>  <p>Whakahuranga Pā: Change Schedule ID from 180 to 111</p> 

<p>Decision: I agree to correct the error under clause 20A, schedule 1, RMA 1991 using my delegated authority</p> <p>Celia Davison Manager Planning – Central South Date: 26/11/2025</p>	
<p>Signature:</p> 	

Attachment 1: Updated GIS Viewer



1		103	Motururu Urupā Omaha	Operative
1		104	Hihiorapa	Operative
1		105	Te Rangihoua Te Pūtiki o Kahumatamo moe	Operative
1		180 111	Whakahuran ga pā	Operative
1		275 110	Kaarearea Paa	Operative