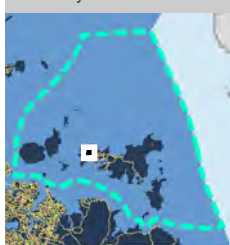


## Maps of alcohol bans in the Waiheke Local Board area

Map Number	Alcohol ban area	Operative time	Commencement
1	Oneroa Town Centre <i>Alcohol ban area amended 11 December 2024 (<a href="#">WHK/2024/136</a>) to include 131-133 Ocean View Road</i>	24 hours, 7 days a week	31 October 2015
2	Miami Avenue car park	24 hours, 7 days a week	31 October 2015
3	<i>Merged into Oneroa Town Centre alcohol ban area (Map 1) on 11 December 2024 (<a href="#">WHK/2024/136</a>)</i>	--	--
4	Anzac Reserve - Waiheke Island	10pm to 7am daylight saving and 7pm to 7am outside	31 October 2015
5	Belle Terrace Foreshore Reserve	10pm to 7am daylight saving and 7pm to 7am outside	31 October 2015
6	Burrell Ocean View Walkway	10pm to 7am daylight saving and 7pm to 7am outside	31 October 2015
7	Citrus Corner	10pm to 7am daylight saving and 7pm to 7am outside	31 October 2015
8	Garratt Road Access way	10pm to 7am daylight saving and 7pm to 7am outside	31 October 2015
9	Homersham Reserve	10pm to 7am daylight saving and 7pm to 7am outside	31 October 2015
10	Matapana Reserve	10pm to 7am daylight saving and 7pm to 7am outside	31 October 2015
11	Oneroa Beach	10pm to 7am daylight saving and 7pm to 7am outside	31 October 2015
12	Onetangi Beach Strand	10pm to 7am daylight saving and 7pm to 7am outside	31 October 2015
13	Onetangi Sports Park	10pm to 7am daylight saving and 7pm to 7am outside	31 October 2015
14	Palm Beach Reserve	10pm to 7am daylight saving and 7pm to 7am outside	31 October 2015
15	Te Huruhi Bay Reserve	10pm to 7am daylight saving and 7pm to 7am outside	31 October 2015
16	Third Reserve	10pm to 7am daylight saving and 7pm to 7am outside	31 October 2015
17	Tin Boat Reserve	10pm to 7am daylight saving and 7pm to 7am outside	31 October 2015



## Locality Guide



0 25 50 75 m

Scale @ A4 = 1:2,830

Date Printed: 19/12/2024

## Oneroa Town Centre

Waiheke Local Board

Hours of Operation: 24 hours, 7 days a week

**Auckland Council**  
Te Kaunihera o Tāmaki Makaurau



Locality Guide



Miami Avenue Carpark

Waiheke Local Board

Hours of Operation: 24 hours, 7 days a week

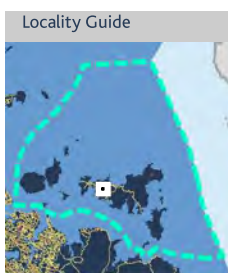
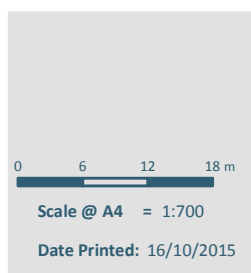


**Auckland Council**  
Te Kaunihera o Tāmaki Makaurau

0 4 8 12 m

Scale @ A4 = 1:480

Date Printed: 16/10/2015



### Anzac Reserve - Waiheke Island

#### Waiheke Local Board

Hours of Operation: 10pm to 7am during daylight saving  
and 7pm to 7am outside daylight saving





## Locality Guide



## Belle Terrace Foreshore Reserve

Waiheke Local Board

Hours of Operation: 10pm to 7am during daylight saving  
and 7pm to 7am outside daylight saving

0 40 80 120 m

Scale @ A4 = 1:4,660

Date Printed: 16/10/2015

**Auckland  
Council**  
Te Kaunihera o Tāmaki Makaurau



0 7 14 21 m

Scale @ A4 = 1:850

Date Printed: 16/10/2015

## Locality Guide



## Burrell Ocean View Walkway

Waiheke Local Board

Hours of Operation: 10pm to 7am during daylight saving  
and 7pm to 7am outside daylight saving**Auckland  
Council**  
Te Kaunihera o Tāmaki Makaurau

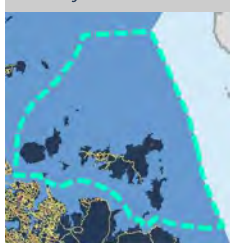


0 2 4 6 m

Scale @ A4 = 1:270

Date Printed: 16/10/2015

## Locality Guide



## Citrus Corner

## Waiheke Local Board

Hours of Operation: 10pm to 7am during daylight saving  
and 7pm to 7am outside daylight saving



**Auckland Council**  
Te Kaunihera o Tāmaki Makaurau



0 6 12 18 m

Scale @ A4 = 1:720

Date Printed: 16/10/2015

## Locality Guide

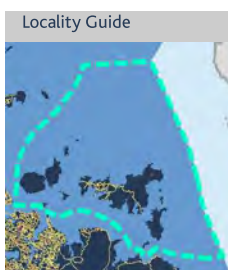
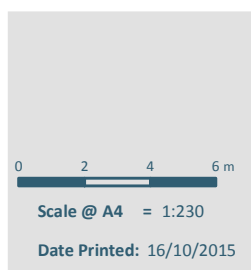


## Garratt Road Access way

Waiheke Local Board

Hours of Operation: 10pm to 7am during daylight saving  
and 7pm to 7am outside daylight saving**Auckland  
Council**

Te Kaunihera o Tāmaki Makaurau



### Homersham Reserve

Waiheke Local Board

Hours of Operation: 10pm to 7am during daylight saving  
and 7pm to 7am outside daylight saving





0 10 20 30 m

Scale @ A4 = 1:1,380

Date Printed: 16/10/2015

## Locality Guide



## Matapana Reserve

Waiheke Local Board

Hours of Operation: 10pm to 7am during daylight saving  
and 7pm to 7am outside daylight saving**Auckland  
Council**  
Te Kaunihera o Tāmaki Makaurau



## Locality Guide



## Oneroa Beach

Waiheke Local Board

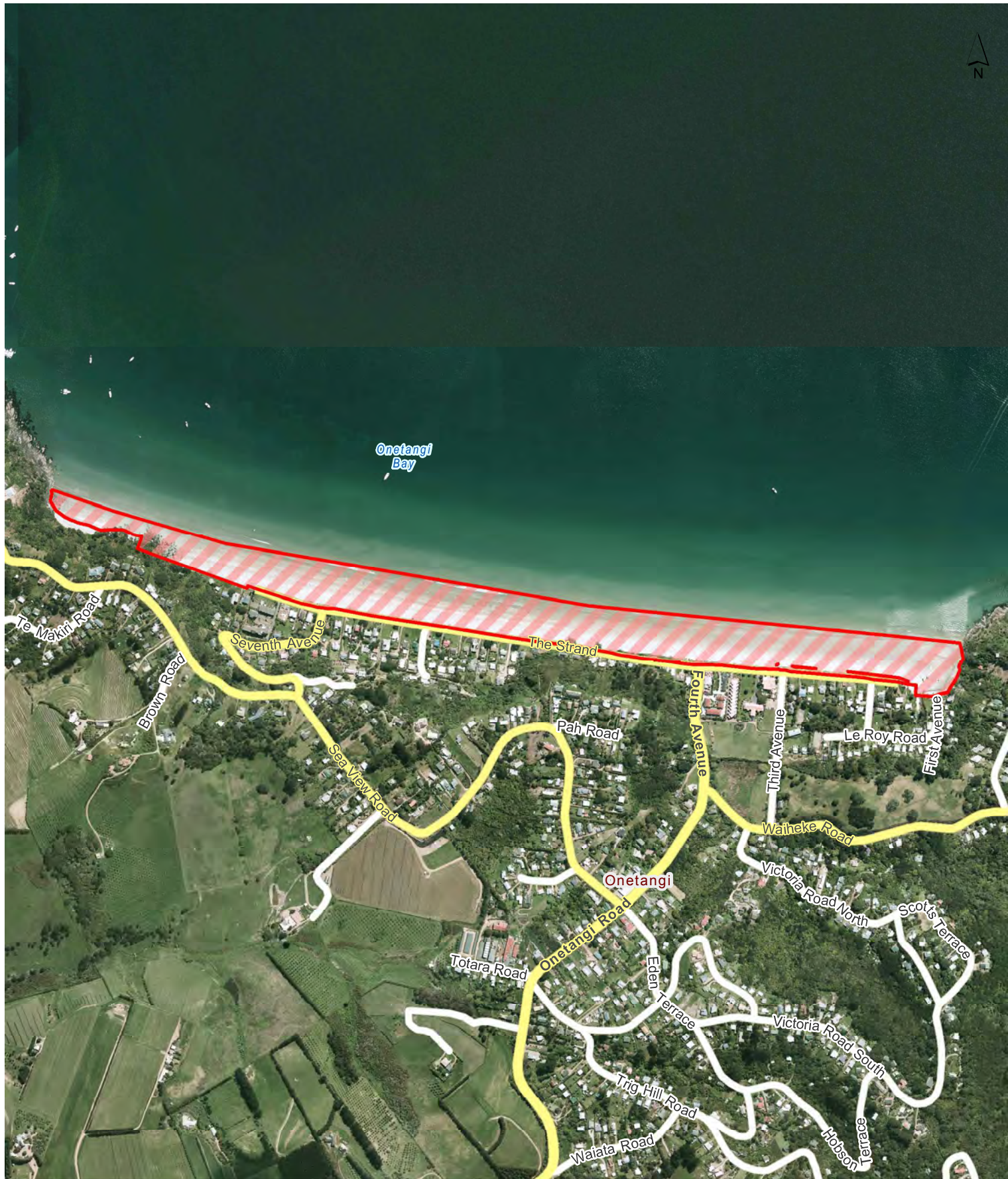
Hours of Operation: 10pm to 7am during daylight saving  
and 7pm to 7am outside daylight saving

0 30 60 90 m

Scale @ A4 = 1:3,940

Date Printed: 16/10/2015

**Auckland Council**  
Te Kaunihera o Tāmaki Makaurau



## Locality Guide



## Onetangi Beach Strand

Waiheke Local Board

Hours of Operation: 10pm to 7am during daylight saving  
and 7pm to 7am outside daylight saving

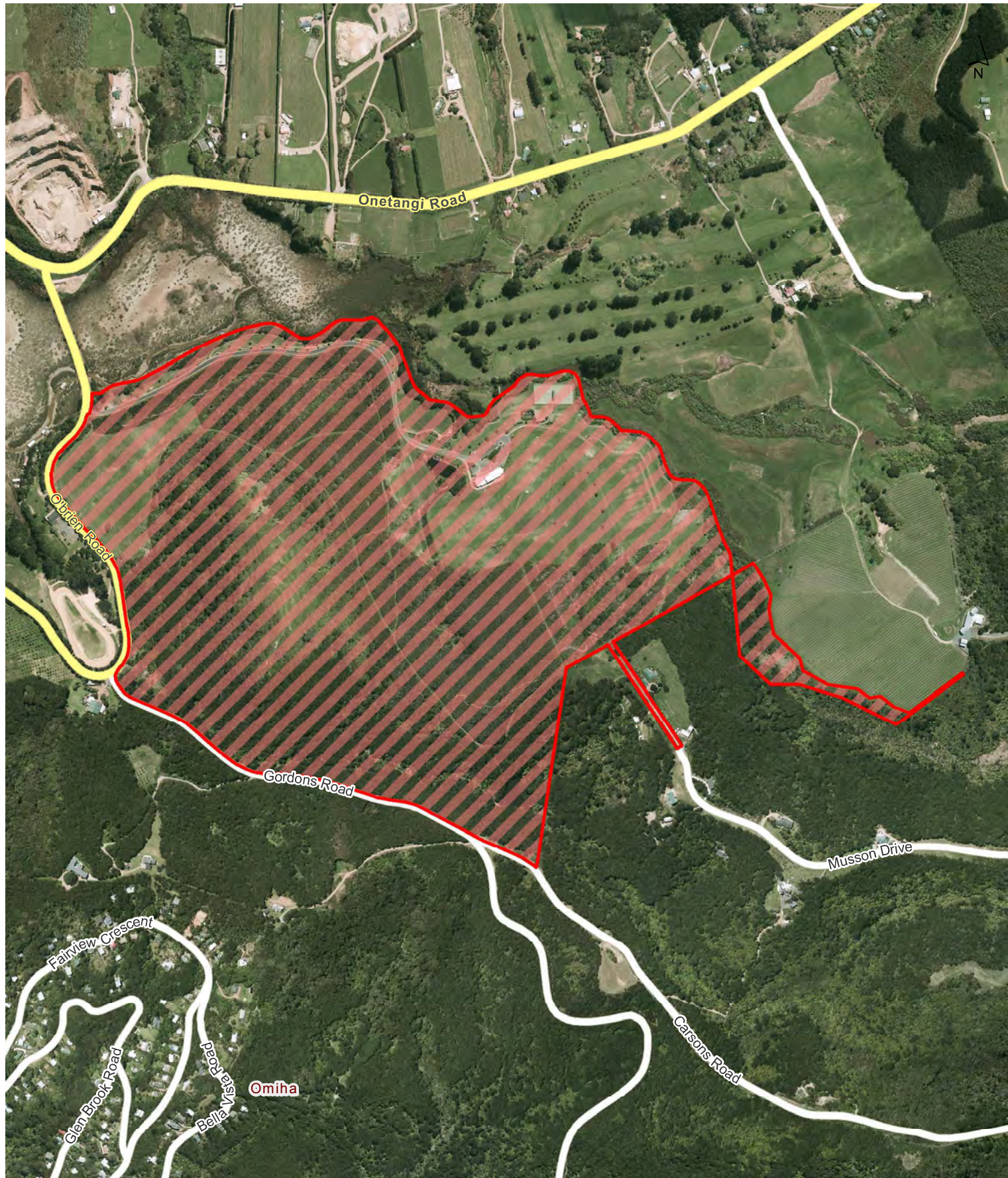
0 90 180 270 m

Scale @ A4 = 1:10,210

Date Printed: 16/10/2015



**Auckland Council**  
Te Kaunihera o Tāmaki Makaurau



## Locality Guide



## Onetangi Sports Park

Waiheke Local Board

Hours of Operation: 10pm to 7am during daylight saving  
and 7pm to 7am outside daylight saving**Auckland  
Council**  
Te Kaunihera o Tāmaki Makaurau

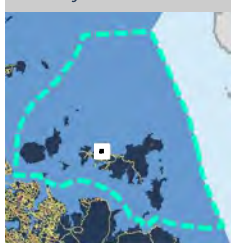
0 75 150 225 m

Scale @ A4 = 1:8,820

Date Printed: 16/10/2015



## Locality Guide



## Palm Beach Reserve

## Waiheke Local Board

Hours of Operation: 10pm to 7am during daylight saving  
and 7pm to 7am outside daylight saving

0 10 20 30 m

Scale @ A4 = 1:2,020

Date Printed: 16/10/2015



**Auckland Council**  
Te Kaunihera o Tāmaki Makaurau



Locality Guide



Te Huruhi Bay Reserve

Waiheke Local Board

Hours of Operation: 10pm to 7am during daylight saving  
and 7pm to 7am outside daylight saving

0 20 40 60 m

Scale @ A4 = 1:2,360

Date Printed: 16/10/2015



**Auckland Council**  
Te Kaunihera o Tāmaki Makaurau



## Locality Guide



## Third Reserve

## Waiheke Local Board

Hours of Operation: 10pm to 7am during daylight saving  
and 7pm to 7am outside daylight saving

0 7.5 15 22.5 m

Scale @ A4 = 1:880

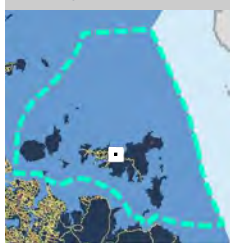
Date Printed: 16/10/2015



**Auckland Council**  
Te Kaunihera o Tāmaki Makaurau



## Locality Guide



## Tin Boat Reserve

## Waiheke Local Board

Hours of Operation: 10pm to 7am during daylight saving  
and 7pm to 7am outside daylight saving

0 9 18 27 m

Scale @ A4 = 1:1,050

Date Printed: 16/10/2015



**Auckland Council**  
Te Kaunihera o Tāmaki Makaurau