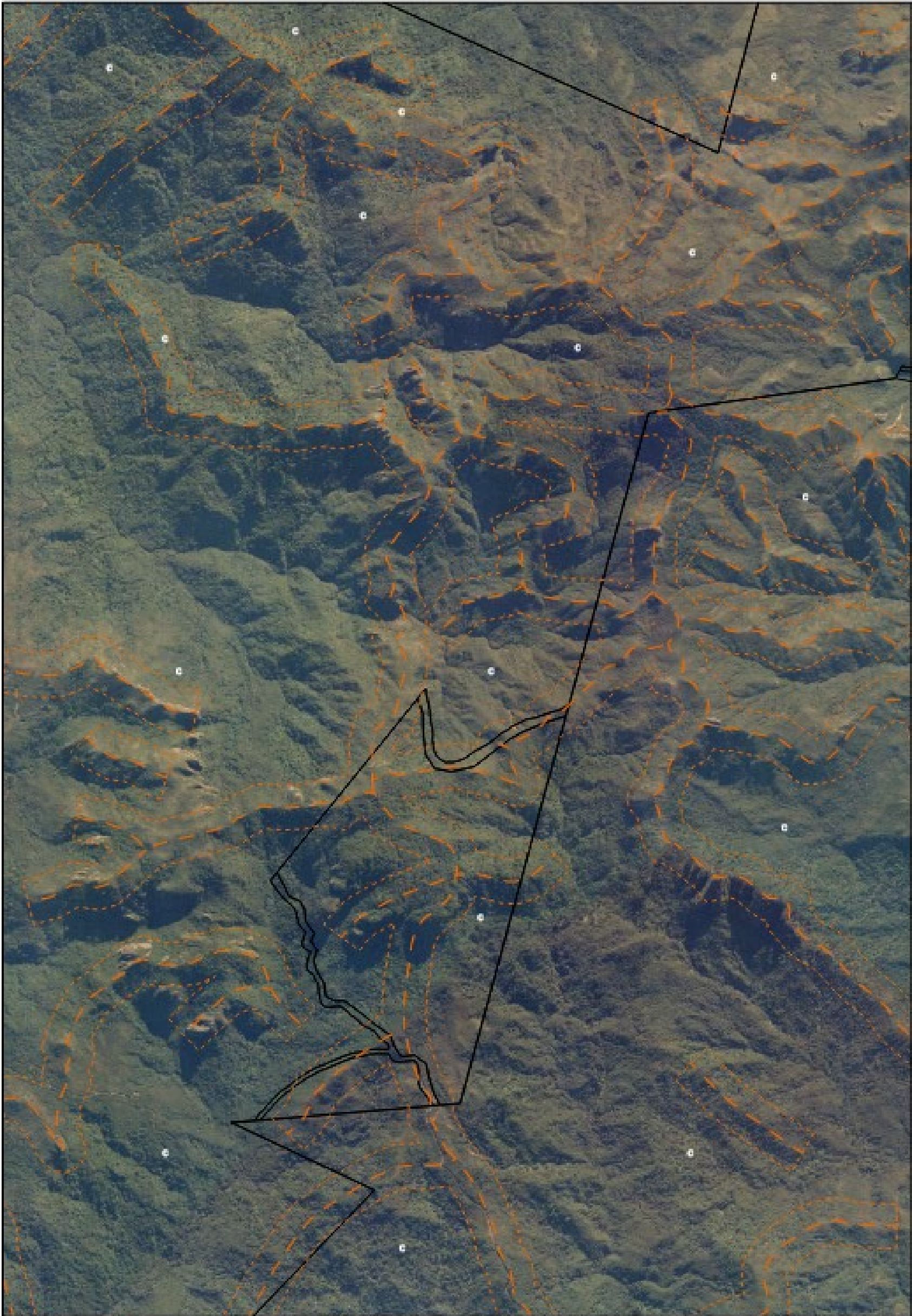


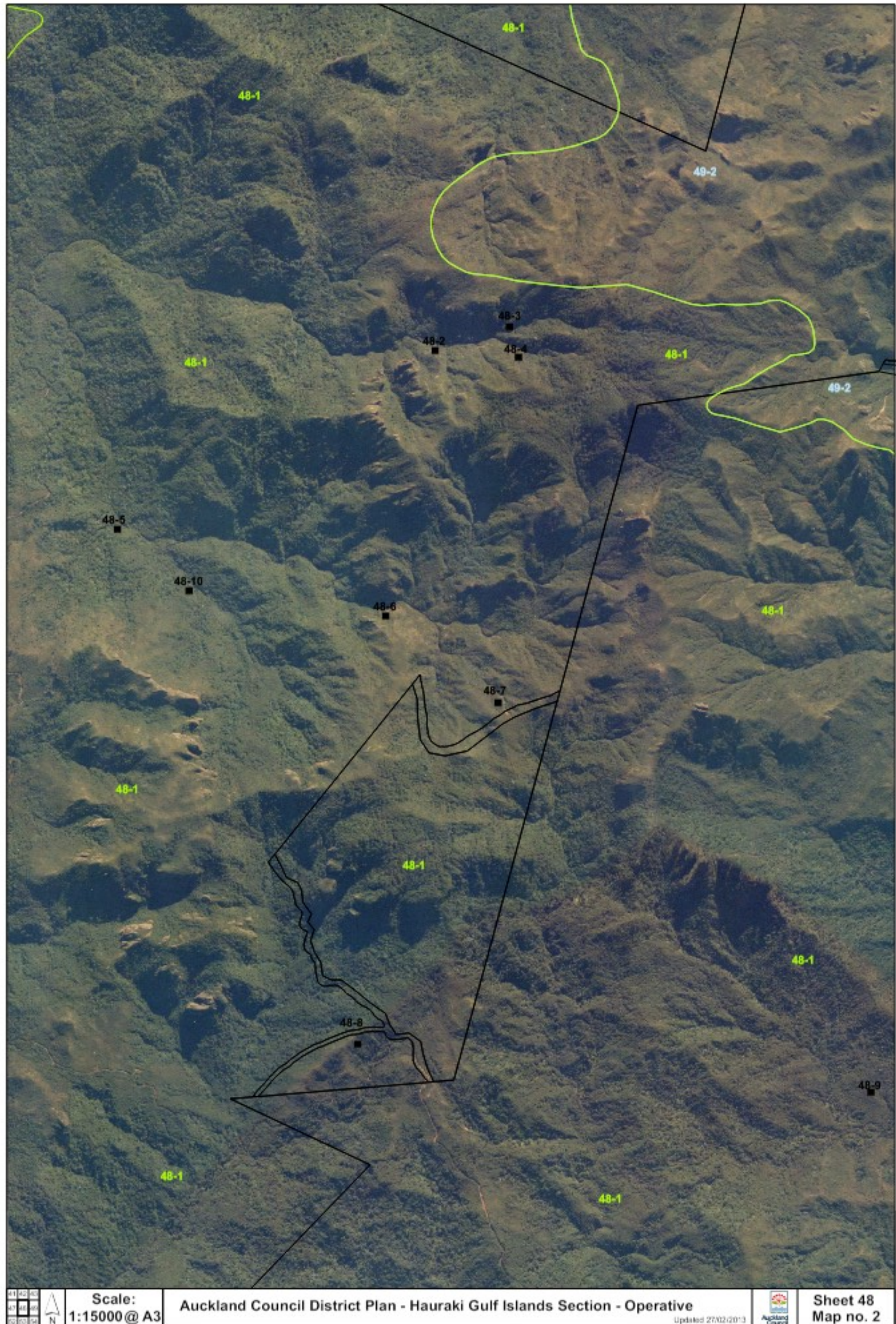


s86B (3) Immediate
legal effect (See
modifications)





s86B (3) Immediate
legal effect (See
modifications)







s86B (3) Immediate
legal effect (See
modifications)

Updated 03/04/2013

Auckland Council District Plan Hauraki Gulf Islands Section - Operative

Legend: Outer islands

Map 1

-  Settlement areas
-  Significant ridgeline area

Land units





-  Landform 1 (coastal cliffs)
-  Landform 2 (dune systems and sand flats)
-  Landform 3 (alluvial flats)
-  Landform 4 (wetland systems)
-  Landform 5 (productive land)
-  Landform 6 (regenerating slopes)
-  Landform 7 (forest and bush areas)
-  Commercial 6 (quarry)
-  Commercial 7 (wharf)
-  Open space 1 (ecology and landscape)
-  Open space 2 (recreation and community facilities)
-  Conservation

Map 2


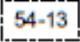
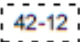


50-4 Map reference number


 54-9 Designated land

Scheduled items

-  54-9 Archaeological site
-  48-7 Building, object, property or place of special value
-  55-2 Site of ecological significance
-  55-5 Sensitive area

Other additional limitations

-  Contaminated or potentially contaminated land
-  54-13 Airfield protection fan
-  42-12 Airfield noise contour levels
-  Development Plan / Concept Plan
-  Airfield

Roading  All public roads are subject to a notice of requirement

 Unformed road

Other

The "updated xx/xx/xxxx" date located bottom right of each sheet is the date that each sheet was updated by Council and not necessarily when the particular change was approved e.g. the date on which a consent order was signed.

-  Property boundary
-  Coast



s86B (3) Immediate
legal effect (See
modifications)

Auckland Council District Plan Hauraki Gulf Islands Section - Operative

Map index: Outer islands



1:180,000 @ A3