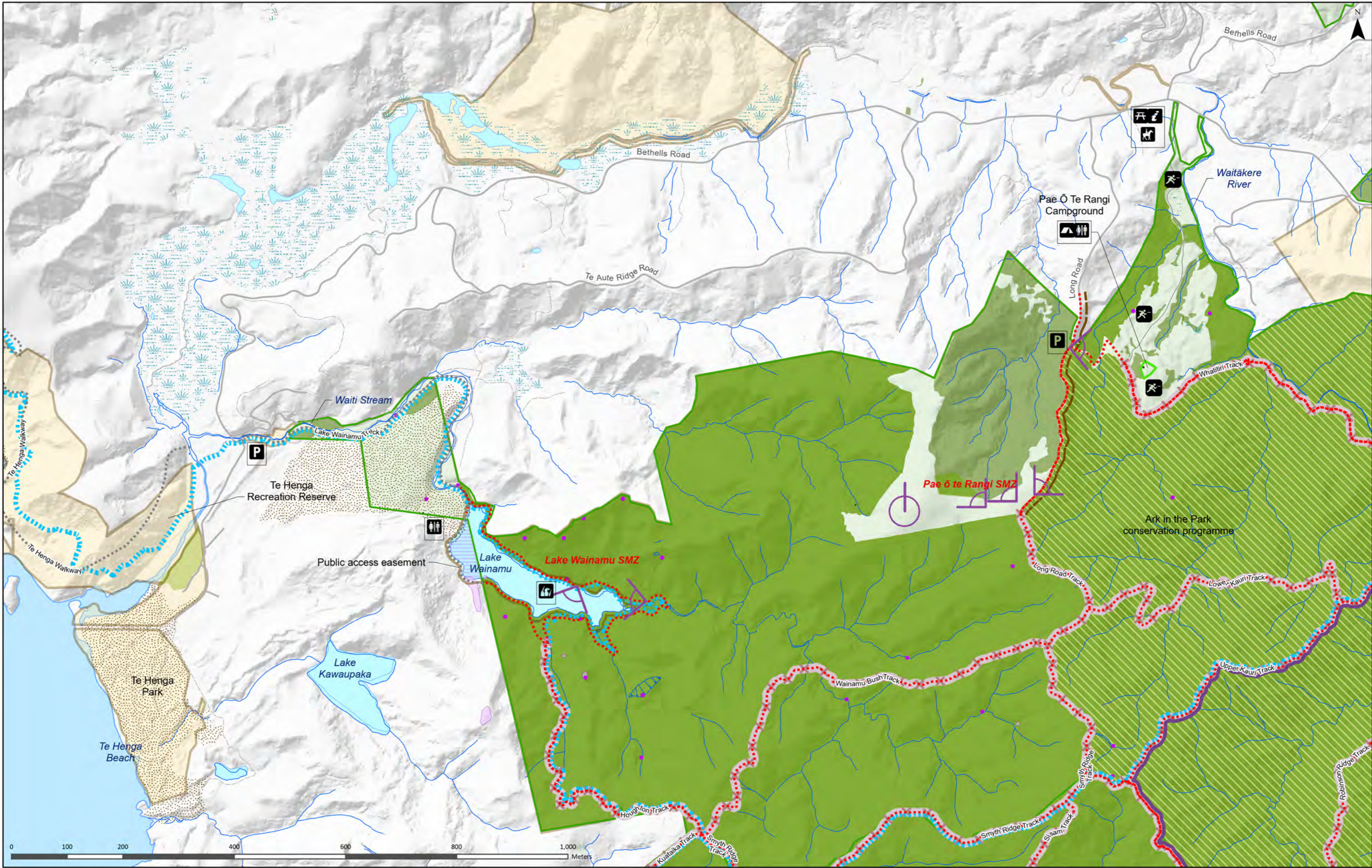


Waitākere Ranges Regional Park - Overview | Map 19.1

Auckland Council Regional Parks Management Plan

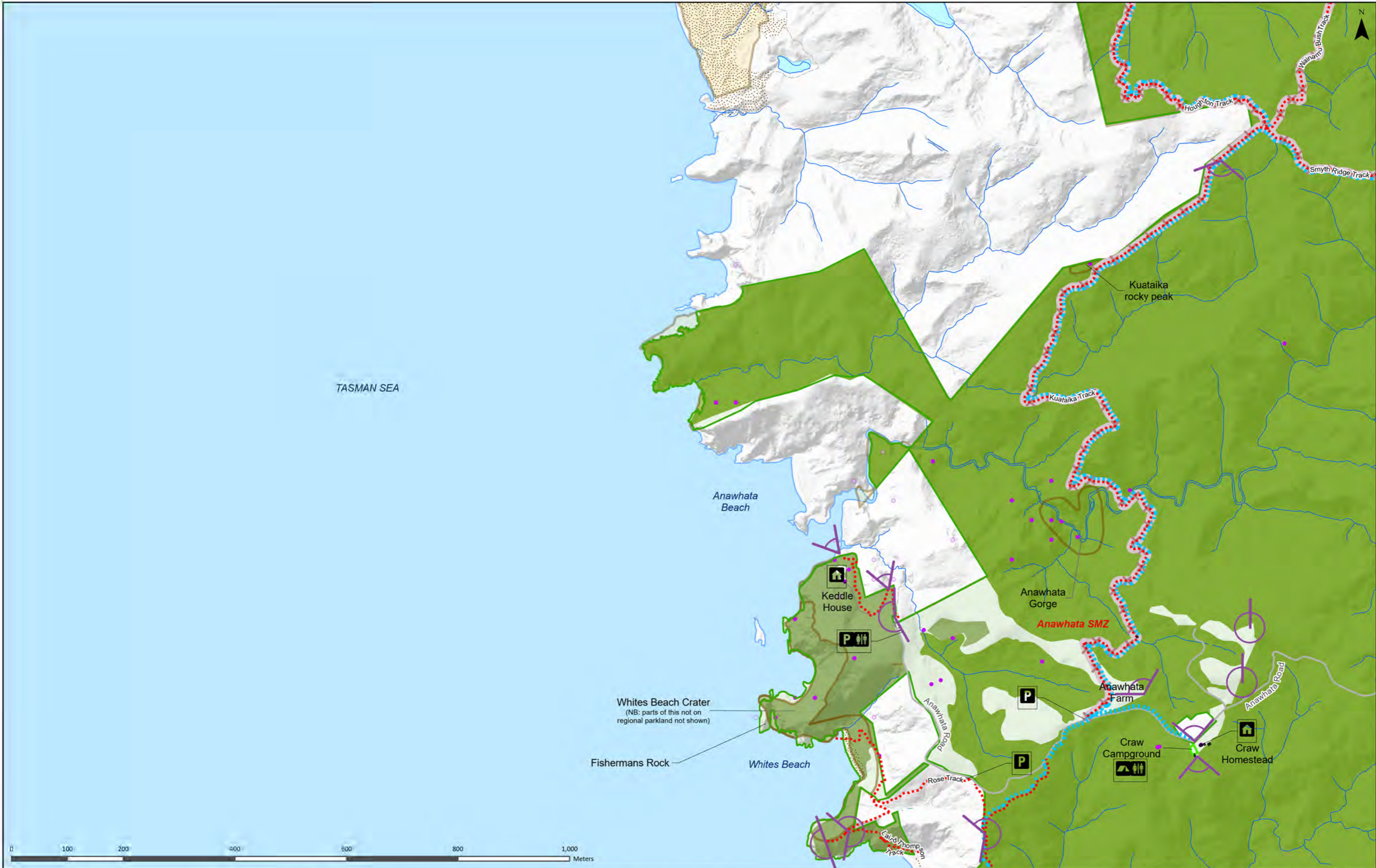


The numbers in brackets (3) are management intentions – refer to the Park chapter for details.

Waitākere Ranges Regional Park - Lake Wainamu - Pae ō Te Rangi | Map 19.2

Auckland Council Regional Parks Management Plan

Notes:
 Tracks which are closed as at September 2022 are shown as a pale pink line with crosses over the red dotted track.



The numbers in brackets (3) are management intentions – refer to the Park chapter for details.

Notes:

Tracks which are closed as at September 2022 are shown as a pale pink line with crosses over the red dotted track.

Waitākere Ranges Regional Park - Anawhata | Map 19.3

Auckland Council Regional Parks Management Plan

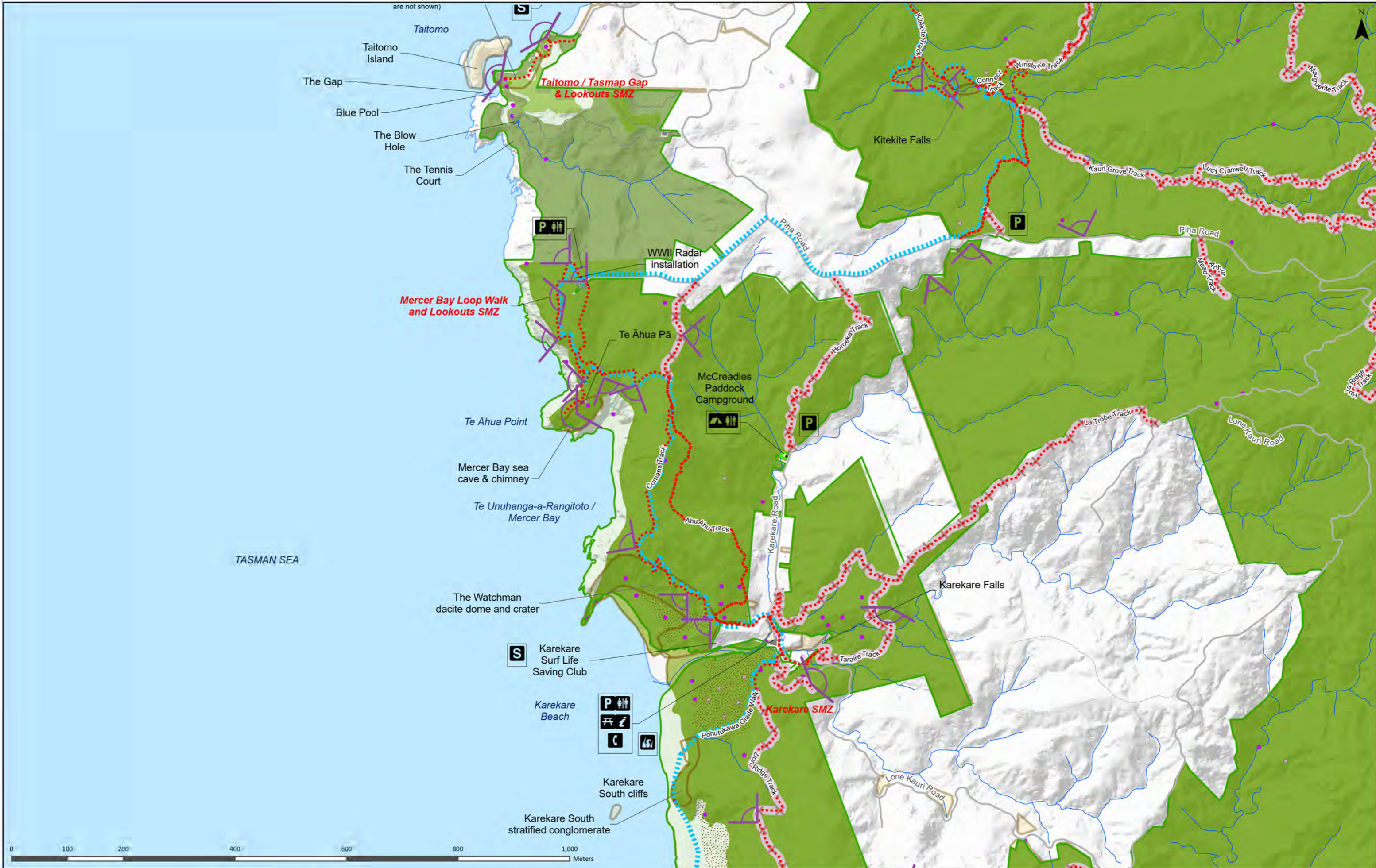


The numbers in brackets (3) are management intentions – refer to the Park chapter for details.

Waitākere Ranges Regional Park - Piha | Map 19.4

Auckland Council Regional Parks Management Plan

Notes:
Te Ara Tūhura / Hillary Trail (blue dotted line) – the original route (south to north) from Ussher Track, Kitekite Track to Kitekite Falls and Glen Esk carpark will eventually be replaced. When Taitomo track is completed, the trail will move closer to the coast, running (south to north) through Taitomo, along Tasman Lookout Track to south Piha beach, joining up with the existing route at Seaview Road.
Tracks which are closed as at September 2022 are shown as a pale pink line with crosses over the red dotted track.



The numbers in brackets (3) are management intentions – refer to the Park chapter for details.

Waitākere Ranges Regional Park - Karekare | Map 19.5

Auckland Council Regional Parks Management Plan

Notes:
Te Ara Tūhura / Hillary Trail (blue dotted line) – the original route along Piha Road heading east and north to Kitekite Falls will eventually be replaced. Once Taitomo track is built the trail will move to closer to the coast heading north from Mercer Bay Loop Walk through Taitomo and Tasman Lookout Track to south Piha, rejoining at Seaview Road.
Tracks which are closed as at September 2022 are shown as a pale pink line with crosses over the red dotted track.



The numbers in brackets (3) are management intentions – refer to the Park chapter for details.

Notes:

Tracks which are closed as at September 2022 are shown as a pale pink line with crosses over the red dotted track.

Waitākere Ranges Regional Park - Pararaha | Map 19.6

Auckland Council Regional Parks Management Plan



The numbers in brackets (3) are management intentions - refer to the Park chapter for details.

Notes:

Tracks which are closed as at September 2022 are shown as a pale pink line with crosses over the red dotted track.

Waitākere Ranges Regional Park - Whatipū | Map 19.7

Auckland Council Regional Parks Management Plan



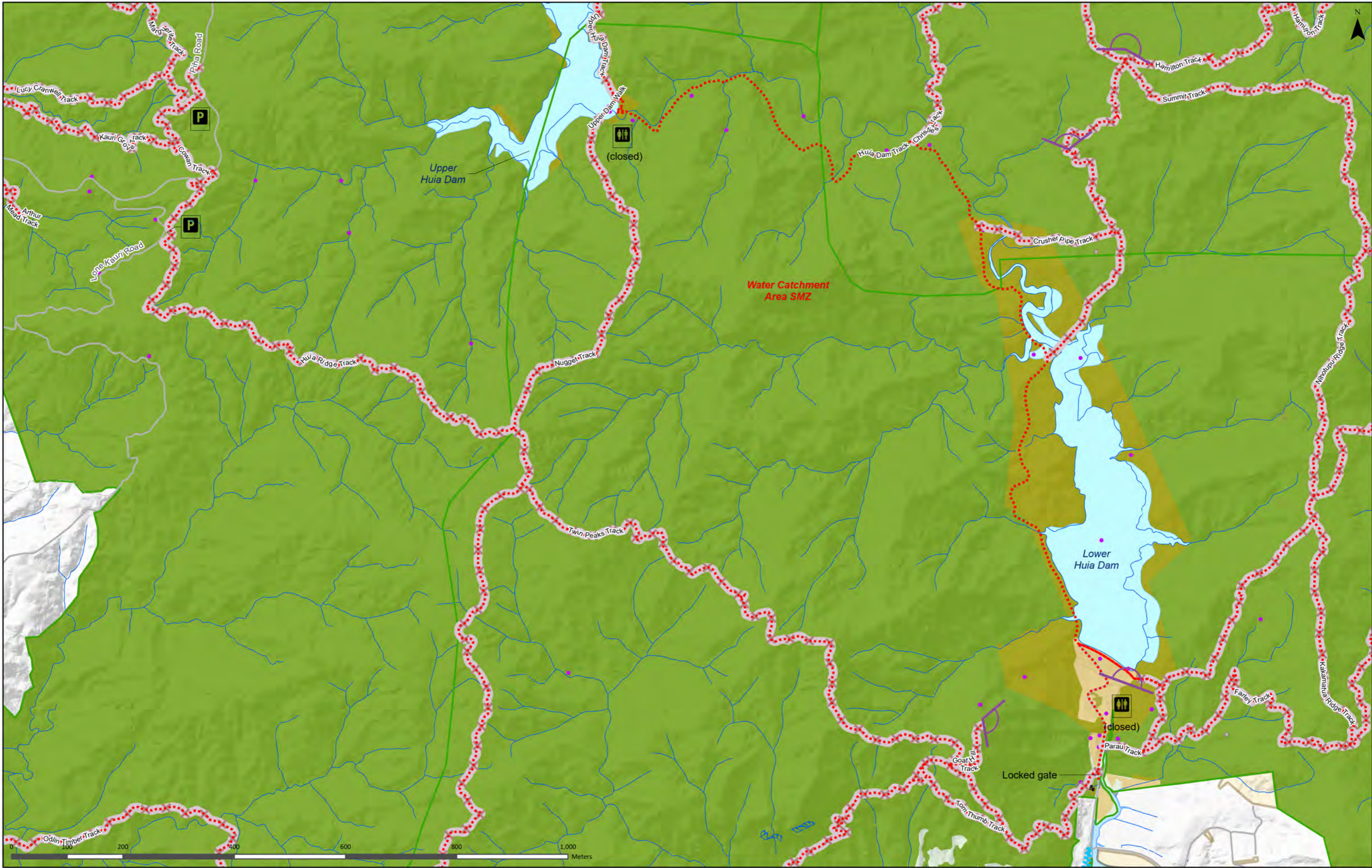
The numbers in brackets (3) are management intentions – refer to the Park chapter for details.

Notes:

Tracks which are closed as at September 2022 are shown as a pale pink line with crosses over the red dotted track.

Waitākere Ranges Regional Park - Karamatura | Map 19.8

Auckland Council Regional Parks Management Plan



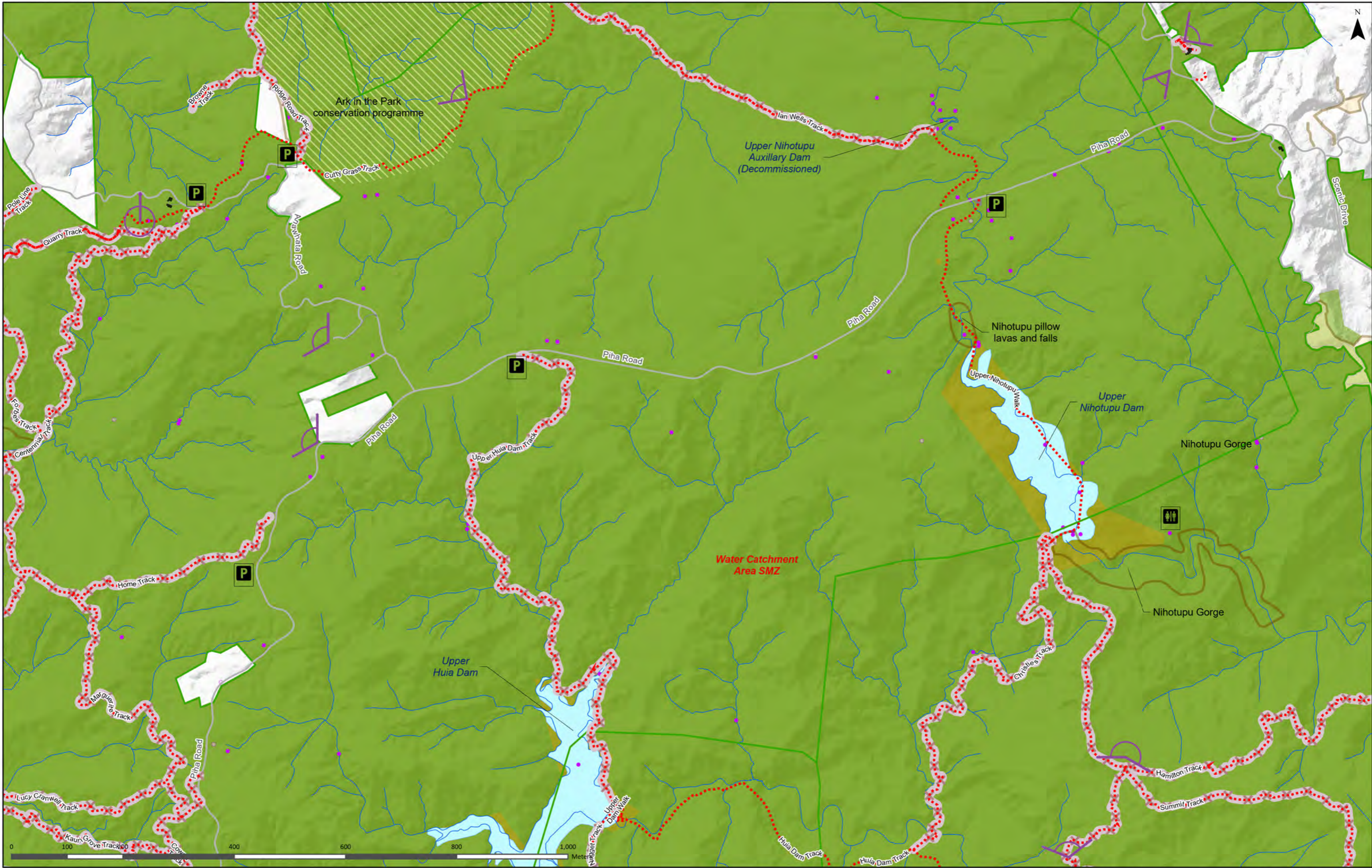
The numbers in brackets (3) are management intentions – refer to the Park chapter for details.

Notes:

Tracks which are closed as at September 2022 are shown as a pale pink line with crosses over the red dotted track.

Waitākere Ranges Regional Park - Huia Valley | Map 19.9

Auckland Council Regional Parks Management Plan



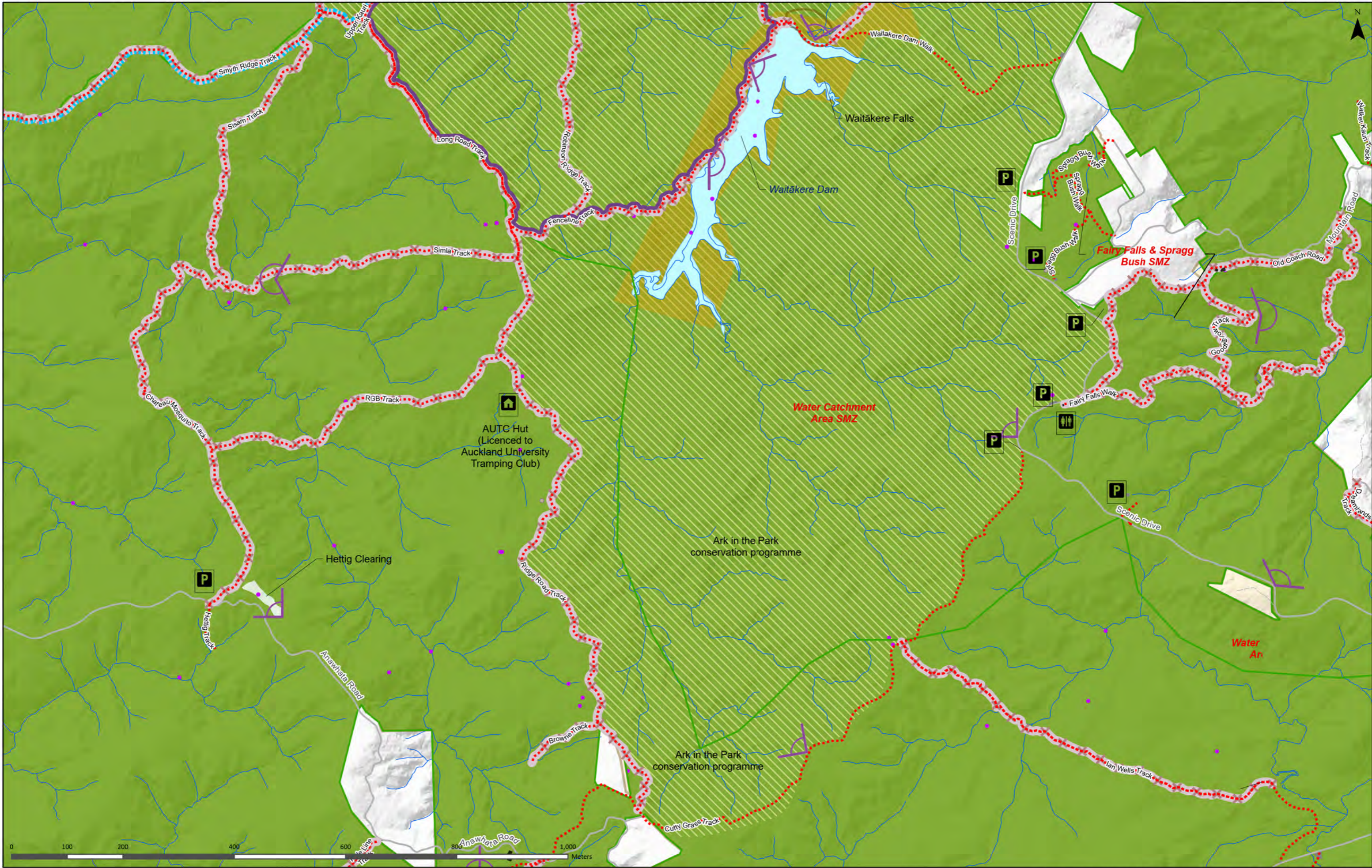
The numbers in brackets (3) are management intentions – refer to the Park chapter for details.

Notes:

Tracks which are closed as at September 2022 are shown as a pale pink line with crosses over the red dotted track.

Waitākere Ranges Regional Park - Upper Nihotupu Reservoir | Map 19.10

Auckland Council Regional Parks Management Plan



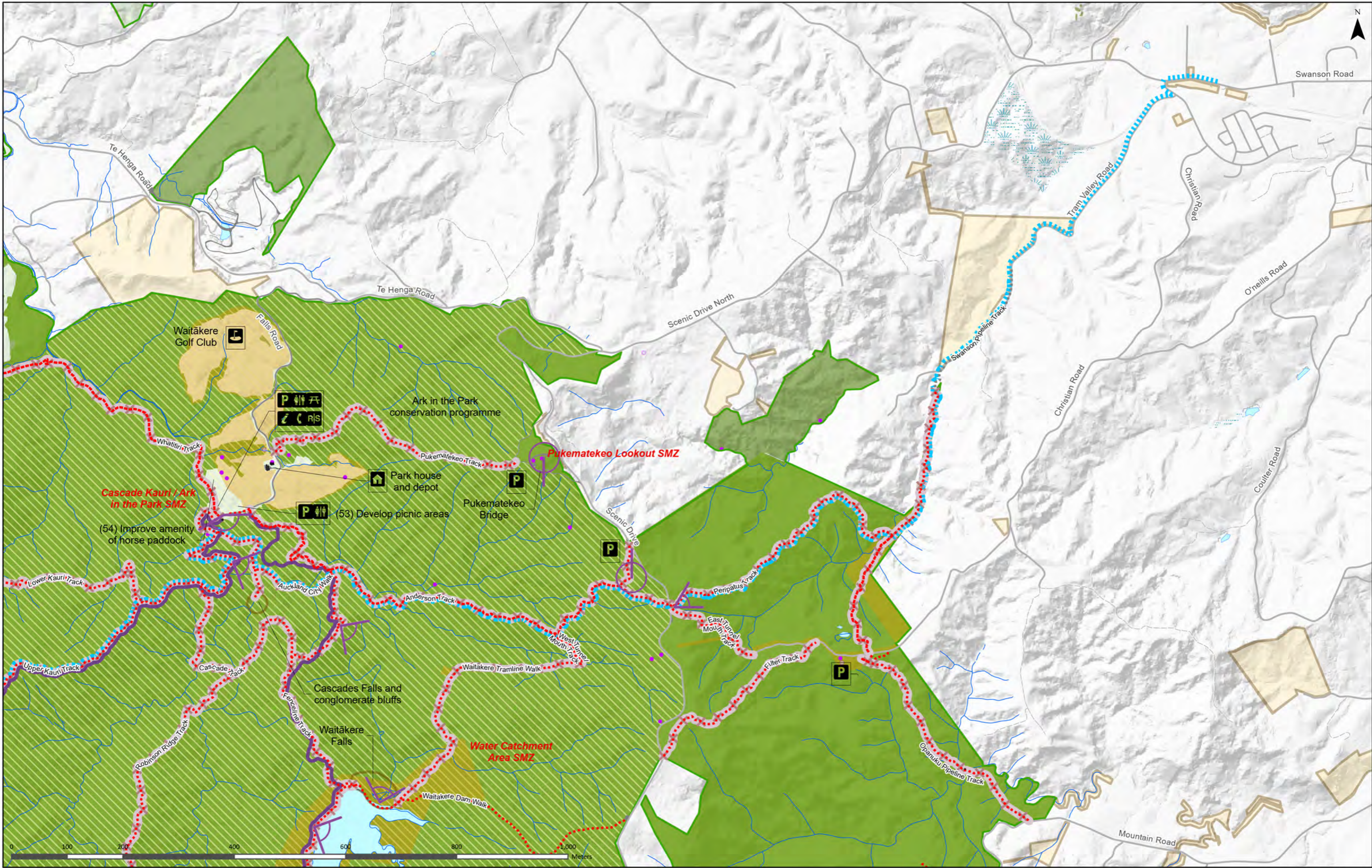
The numbers in brackets (3) are management intentions - refer to the Park chapter for details.

Notes:

Tracks which are closed as at September 2022 are shown as a pale pink line with crosses over the red dotted track.

Waitākere Ranges Regional Park - Waitakere Reservoir | Map 19.11

Auckland Council Regional Parks Management Plan



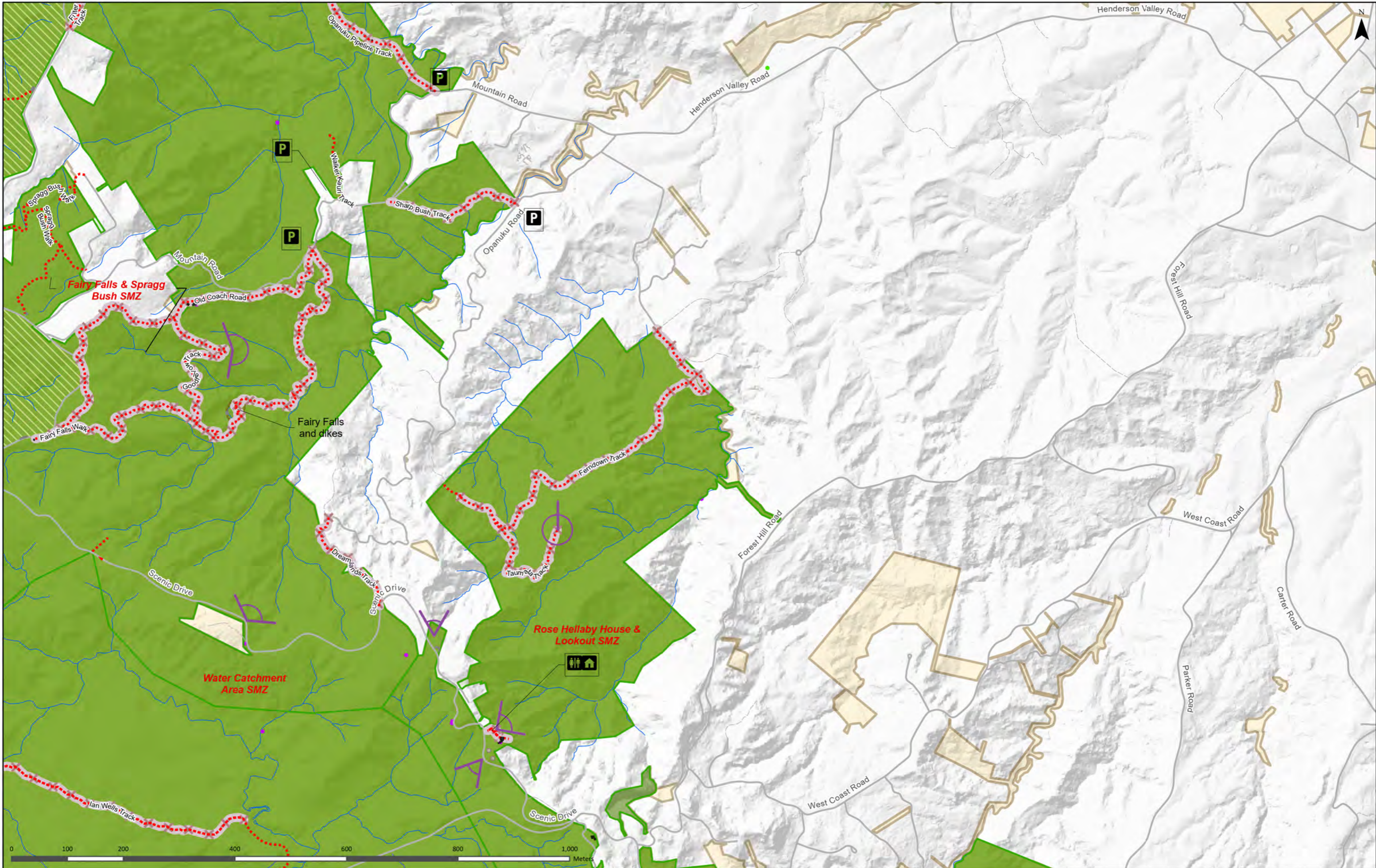
The numbers in brackets (3) are management intentions - refer to the Park chapter for details.

Notes:

Tracks which are closed as at September 2022 are shown as a pale pink line with crosses over the red dotted track.

Waitākere Ranges Regional Park - Cascades | Map 19.12

Auckland Council Regional Parks Management Plan



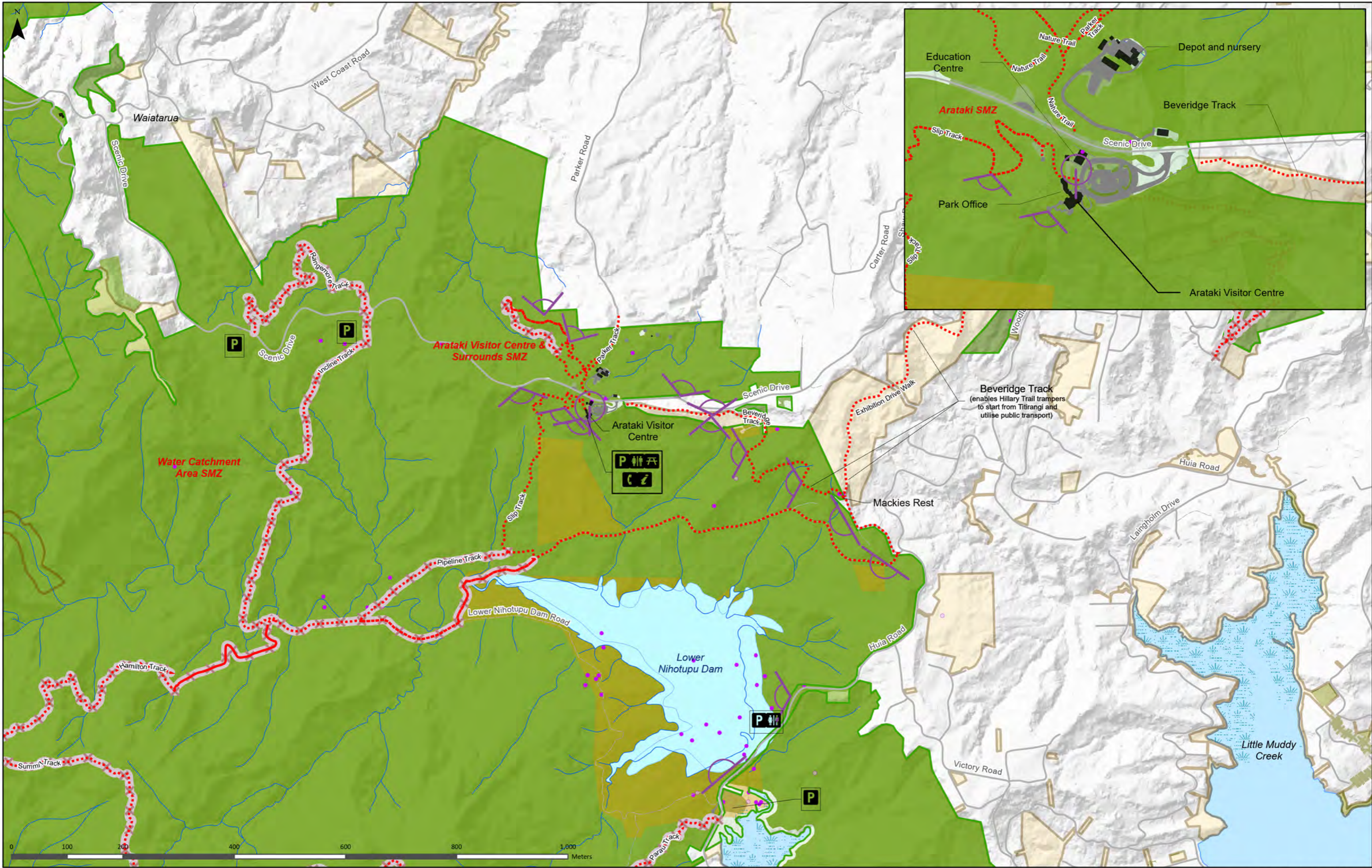
The numbers in brackets (3) are management intentions – refer to the Park chapter for details.

Notes:

Tracks which are closed as at September 2022 are shown as a pale pink line with crosses over the red dotted track.

Waitākere Ranges Regional Park - Waiatarua | Map 19.13

Auckland Council Regional Parks Management Plan

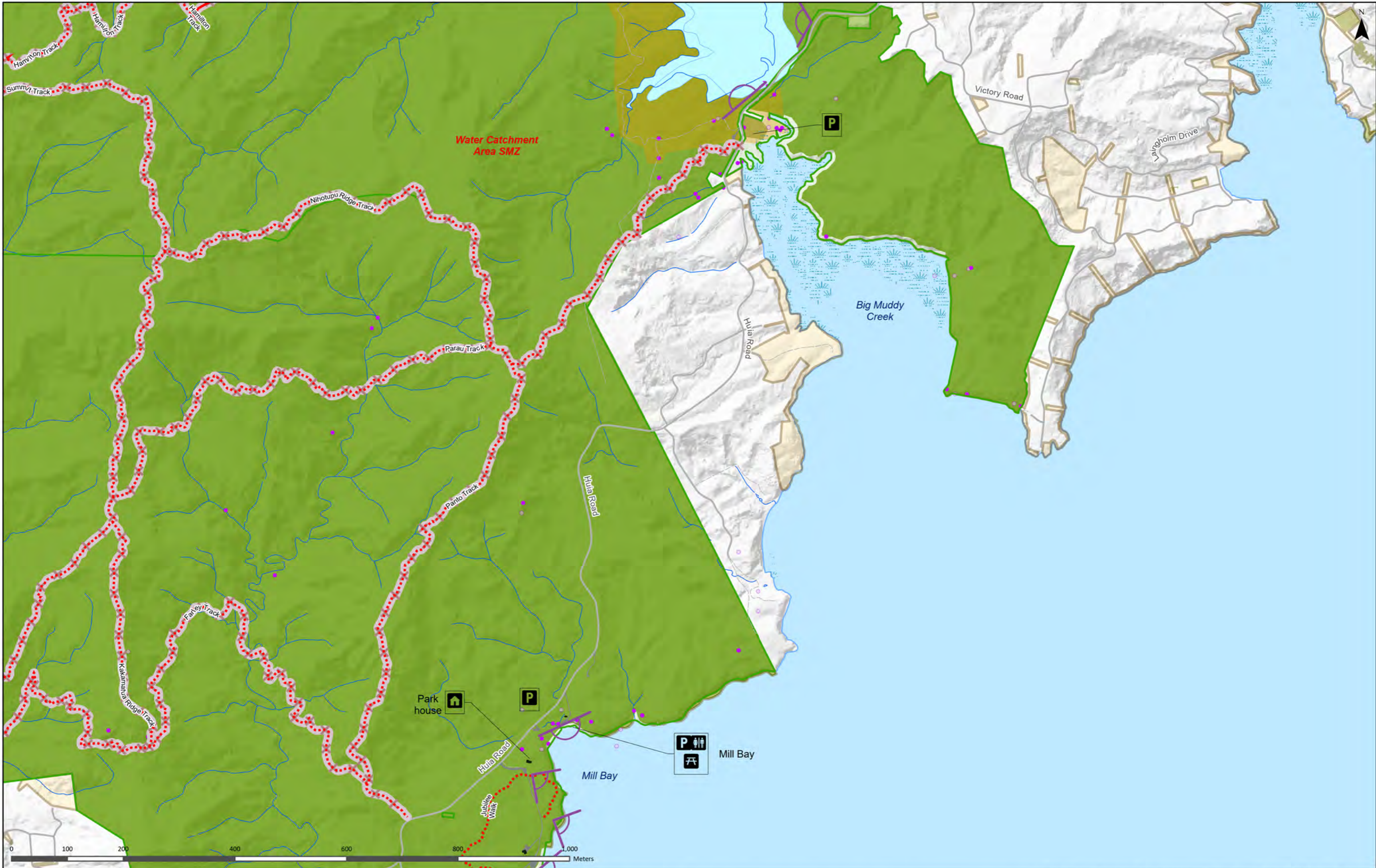


The numbers in brackets (3) are management intentions – refer to the Park chapter for details.

Waitākere Ranges Regional Park - Arataki | Map 19.14

Auckland Council Regional Parks Management Plan

Notes:
Te Ara Tūhura / Hillary Trail (blue dotted line) – The route will head south from Slip Track via a new route to connect with Parau Track (alignment yet to be confirmed).
Tracks which are closed as at September 2022 are shown as a pale pink line with crosses over the red dotted track.



The numbers in brackets (3) are management intentions – refer to the Park chapter for details.

Notes:

Tracks which are closed as at September 2022 are shown as a pale pink line with crosses over the red dotted track.

Waitākere Ranges Regional Park - Parau - Big Muddy Creek | Map 19.15

Auckland Council Regional Parks Management Plan



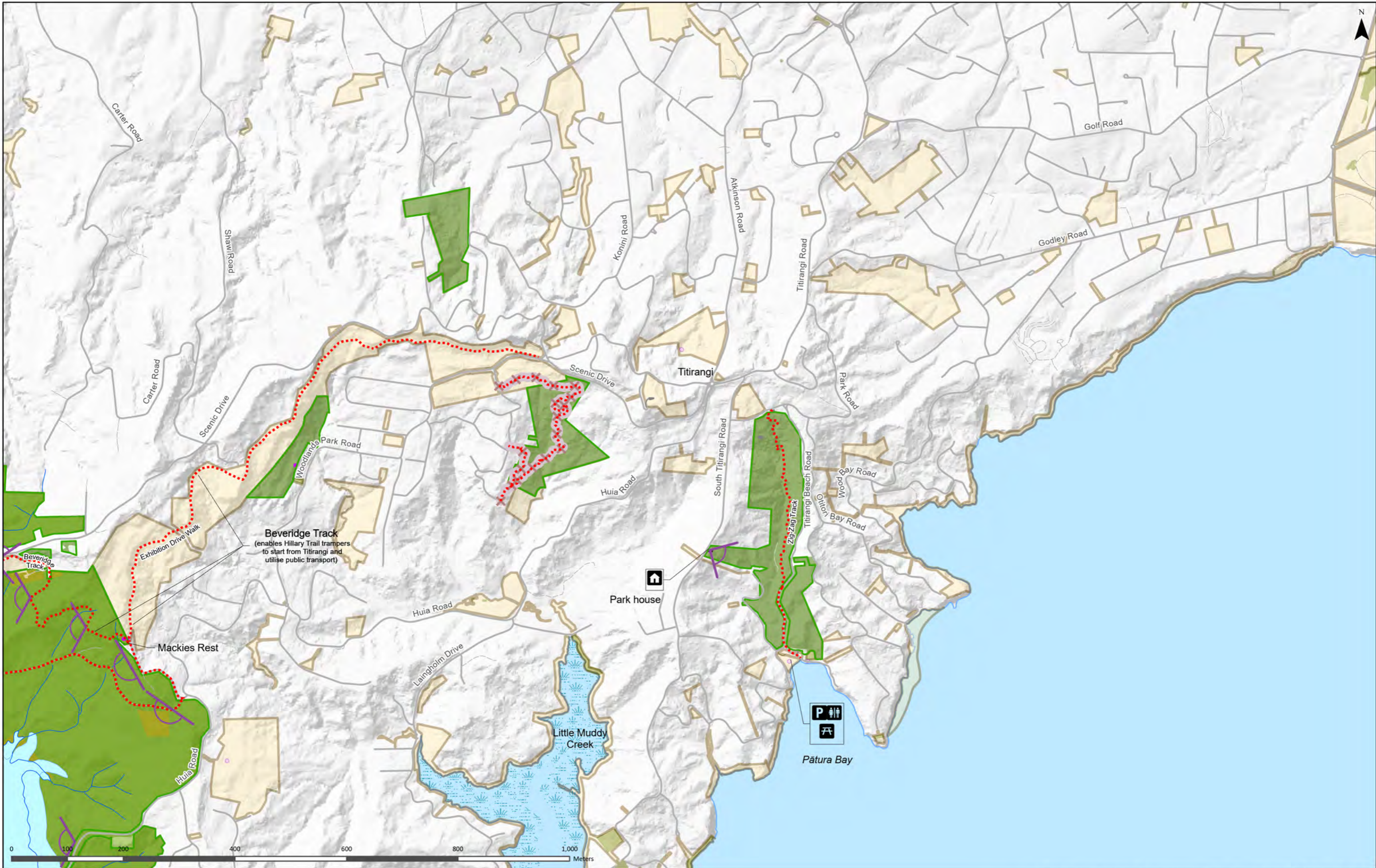
The numbers in brackets (3) are management intentions - refer to the Park chapter for details.

Notes:

Tracks which are closed as at September 2022 are shown as a pale pink line with crosses over the red dotted track.

Waitākere Ranges Regional Park - Cornwallis | Map 19.16

Auckland Council Regional Parks Management Plan



The numbers in brackets (3) are management intentions – refer to the Park chapter for details.

Notes:

Tracks which are closed as at September 2022 are shown as a pale pink line with crosses over the red dotted track.

Waitākere Ranges Regional Park - Titirangi | Map 19.17

Auckland Council Regional Parks Management Plan