

Memo

24 October 2018

To: Phill Reid, Auckland-wide Manager
From: Jo Hart, Principal Planner, Planning North West and Islands

Subject: **Plan Modification: Clause 20A Amendment to Operative in part Management Layer – Designations (Designation 1402: Weiti Crossing) of the Auckland Unitary Plan (AUP) Operative in part (15 November 2016).**

Delegated authority to T4 manager through Schedule 2A of the Auckland Council Combined Chief Executives Delegation Register (Updated May 2017).

This plan modification requires decision-making pursuant to clause 20A of the First Schedule to the Resource Management Act 1991, as corrections are required to the Auckland Unitary Plan (Operative in Part).

Rule or Section of Unitary Plan	Operative in part Management Layer – Designations – Designation 1402: Weiti Crossing
Subject Site (if applicable)	East Coast Road, Redvale (crossing Weiti River) to corner Whangaparaoa Road and Cedar Road, Whangaparaoa
Legal Description (if applicable)	
Nature of change	<p>An email, dated 22 June 2018, was received from Auckland Transport (as attached). Auckland Transport has found that the boundary of the designation is not mapped correctly and does not align with that of the altered NoR.</p> <p>A map amendment is required to correct the designation boundary in the Operative in Part version. The error wasn't corrected as requested in June as council required an up-to-date shape file to ensure that the boundary is mapped correctly.</p> <p>Discussion</p> <p>Designation 1402 was confirmed approximately 18 years ago in the Auckland Council District Plan (Rodney Section). An alteration to the designation was confirmed on 19 November 2015 and mapped using a shape file provided by Auckland Transport. Investigation shows that the mapping in the legacy Rodney District Council District Plan was correct but was not updated into the then PAUP.</p> <p>The designation was then rolled over into the PAUP without modification using a shape file provided by Auckland Transport. The AUP hearing process did not result in any amendments to mapping. There were two amendments to the text (to reinstate a 'pegging out' requirement and to the format of the lapse date).</p> <p>Auckland Transport has advised that the boundary is incorrectly mapped in the AUP management layer. Map 1 (refer to Attachment A) and Attachment 2 (final set of plans for Penlink) show the areas of land that need to be included within the designation boundary. Map 2</p>

	(Attachment A) shows the boundary as it is currently mapped in the AUP.
Effect of change	The effect of the amendment is less than minor and administrative in nature. The error in the mapping of the boundary of the designation is does affect owners or occupiers of private property. However, these landowners were affected parties and involved in the designation alteration process. There are private agreements with Auckland Transport for the purchase of the land, under the Public Works Act 1981, and specific conditions on the designation.
Changes required to be made	Amend Management Layer – Designations in the Operative in Part version (Designation 1402: Weiti Crossing) as per the attached shape file and designation plans.

Prepared by:

Jo Hart
Principal Planner
Planning North West and Islands

Approved by:

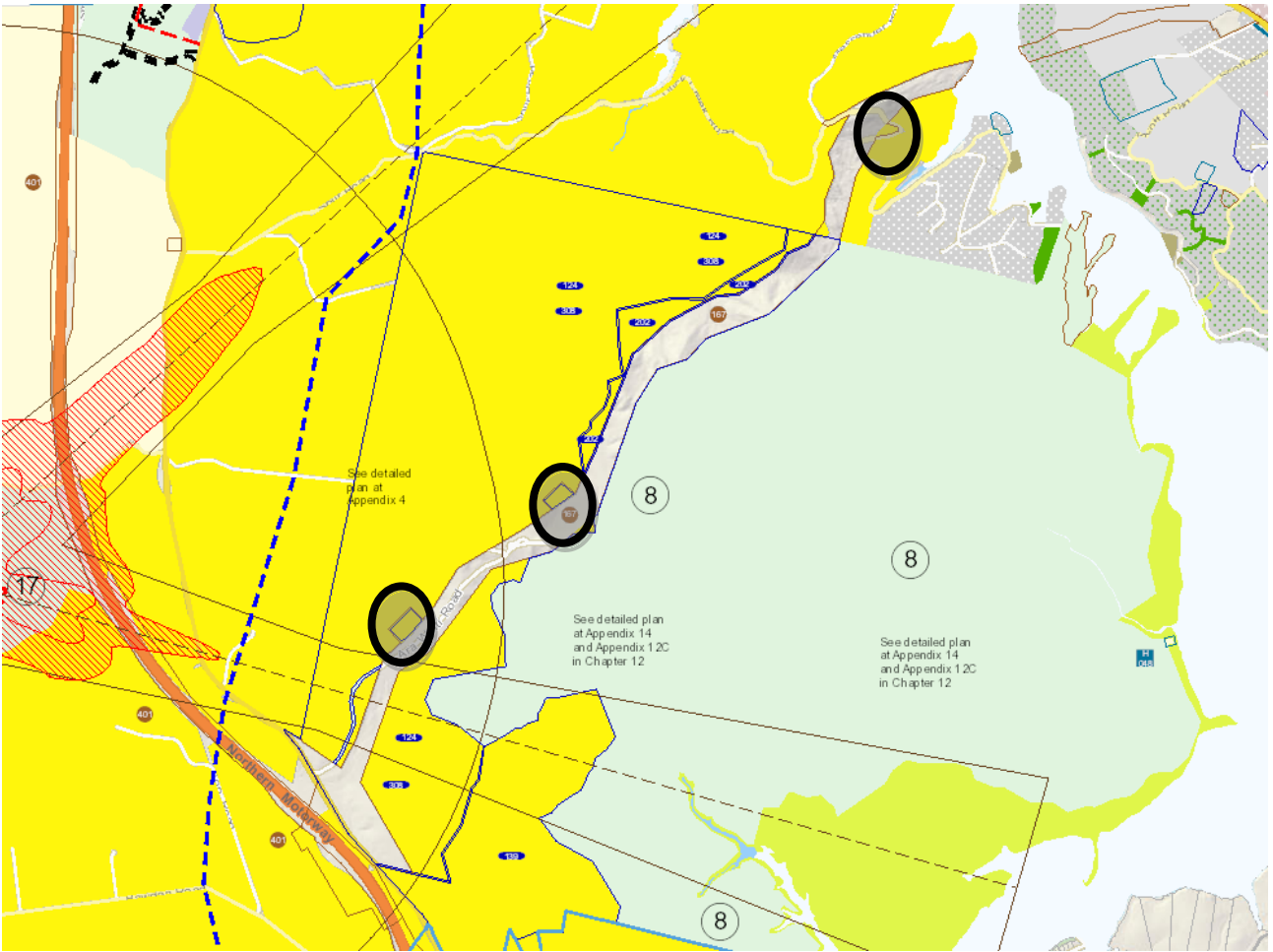
Warren MacLennan
Manager – Planning North Wests and Islands

Signature:

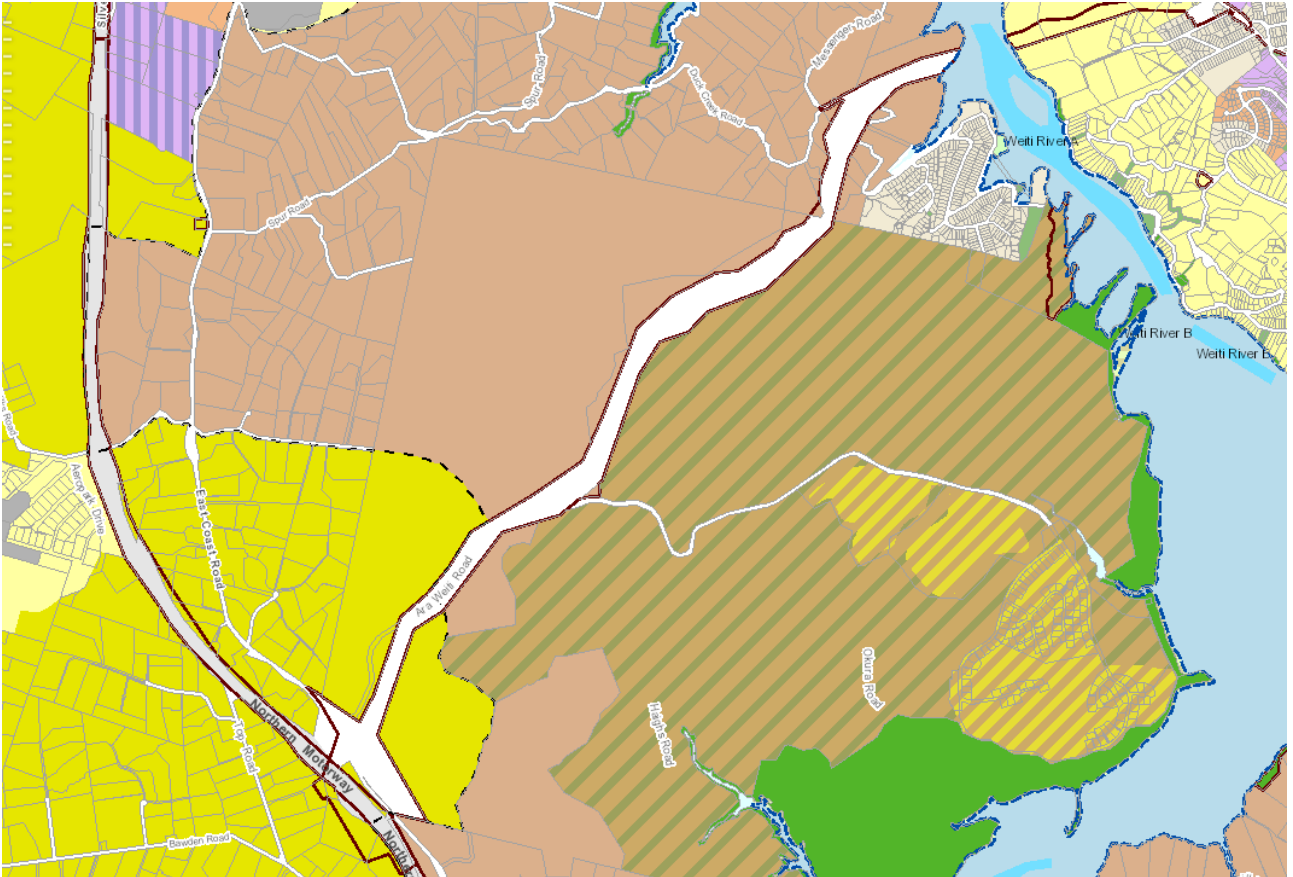


Signature:





Map 1: Auckland Council District Plan (Rodney Section) – circles show land to be included



Map 2: Auckland Unitary Plan (as at 26 October 2018)