



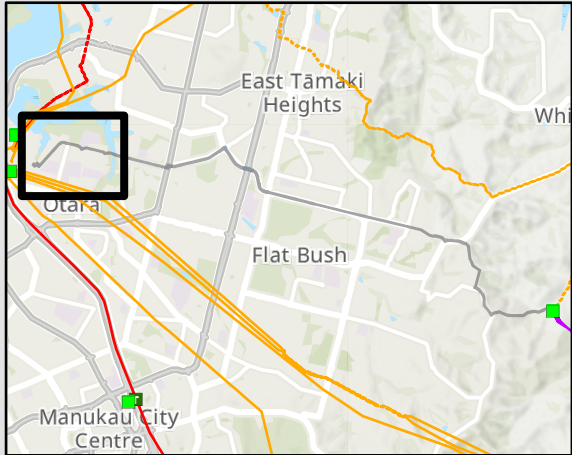
Appendix 2

Project Plans

Legend

BHL-OTA Cable Designation Area and Route

Parcel boundary



External

Disclaimer

This document is produced for external release. Its conclusions are based on the information currently available to Transpower and may change as further information becomes available either internally or externally.



BHL-OTA Cable Designation Area and Route

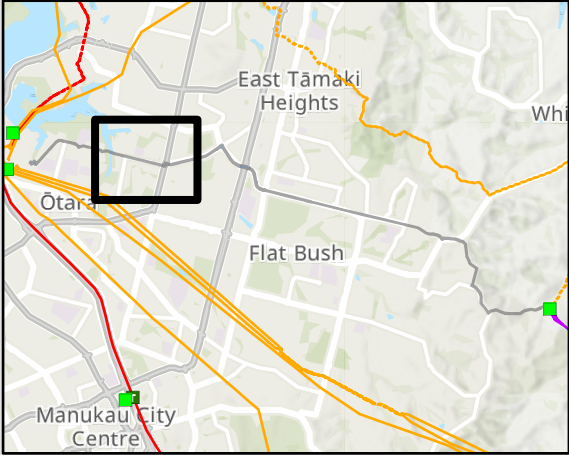
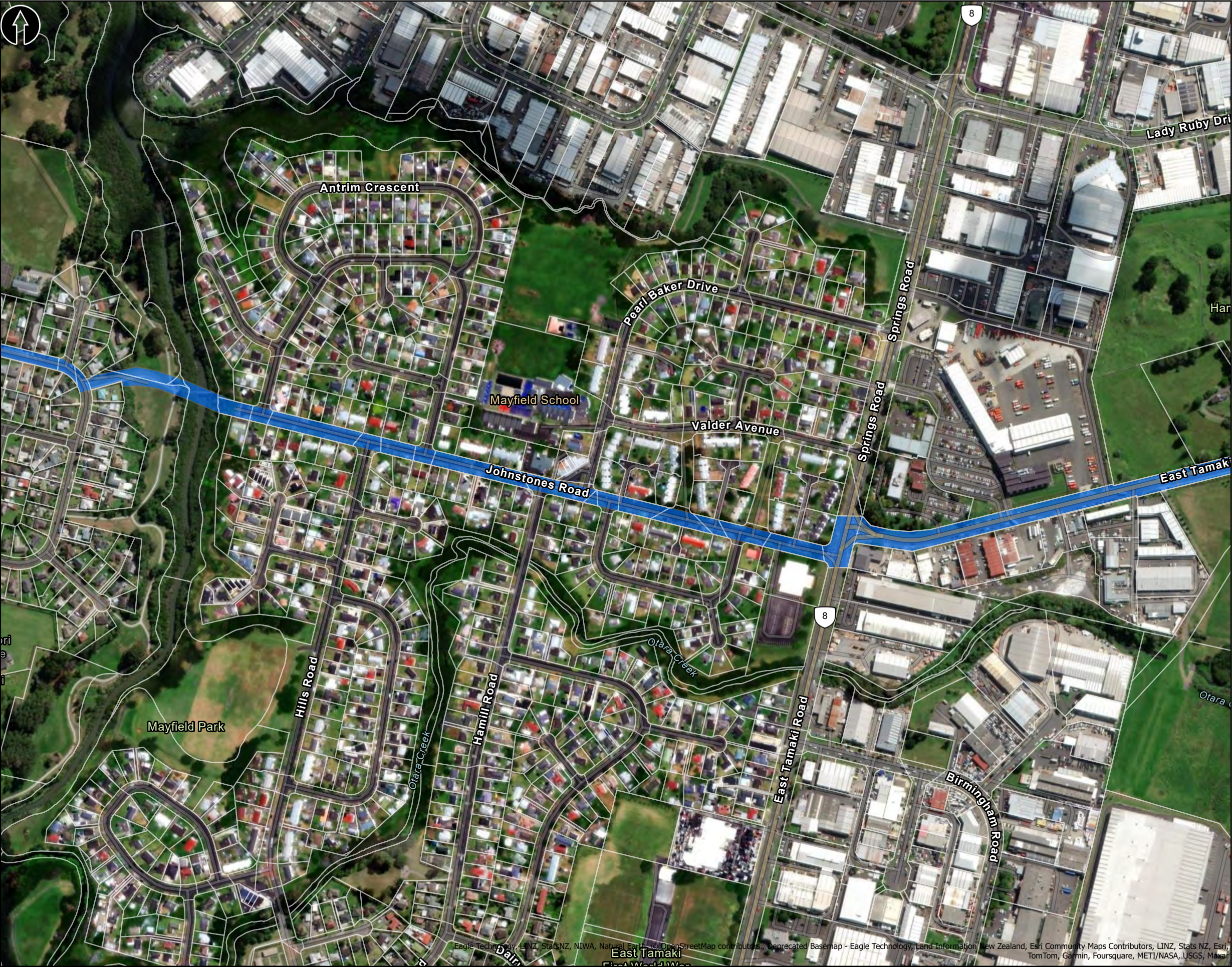


COPYRIGHT © 2024 TRANSPOWER NEW ZEALAND LIMITED. ALL RIGHTS RESERVED
This document is protected by copyright vested in Transpower New Zealand Limited ("Transpower"). No part of the document may be reproduced or transmitted in any form by any means including, without limitation, electronic, photocopying, recording or otherwise, without the prior written permission of Transpower. No information embodied in the documents which is not already in the public domain shall be communicated in any manner whatsoever to any third party without the prior written consent of Transpower. Any breach of the above obligations may be restrained by legal proceedings seeking remedies including injunctions, damages and costs.

Legend

BHL-OTA Cable Designation Area and Route

Parcel boundary



External

This document is produced for external release. Its conclusions are based on the information currently available to Transpower and may change as further information becomes available either internally or externally.

Disclaimer

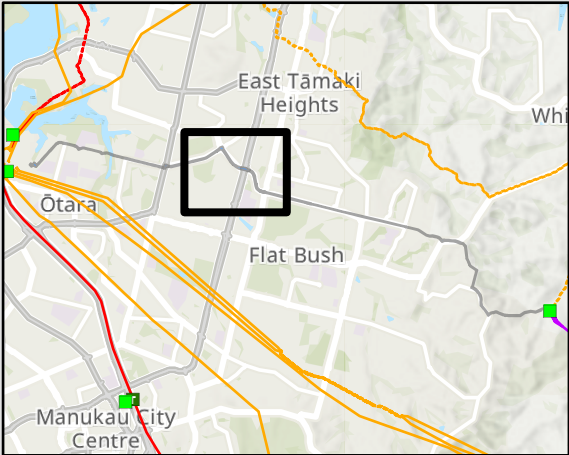
BHL-OTA Cable Designation Area and Route



Legend

BHL-OTA Cable Designation Area and Route

Parcel boundary



External

Disclaimer

This document is produced for external release. Its conclusions are based on the information currently available to Transpower and may change as further information becomes available either internally or externally.



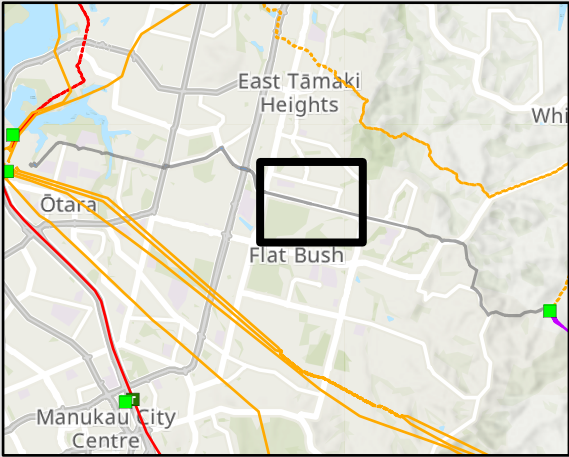
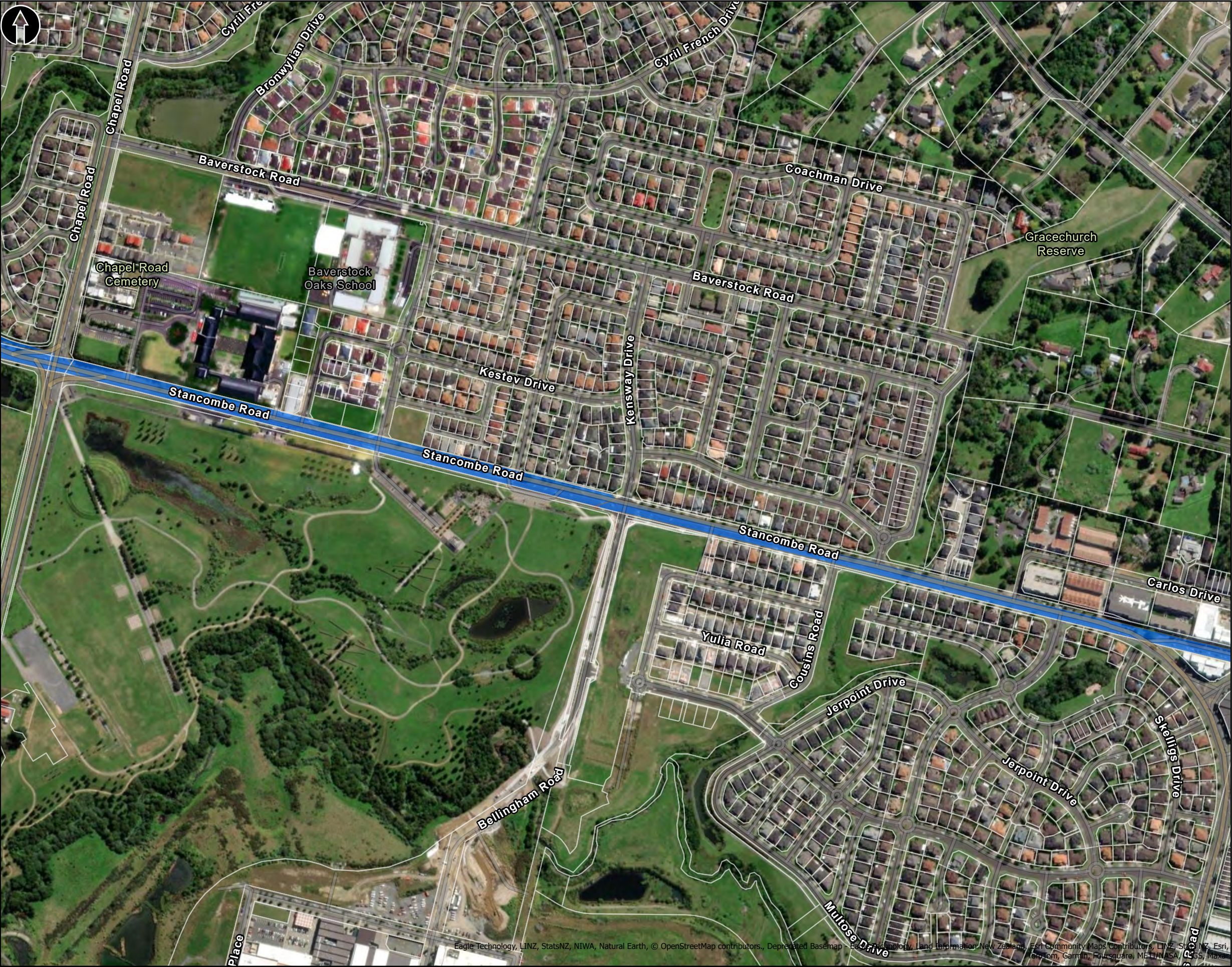
BHL-OTA Cable Designation Area and Route



Legend

BHL-OTA Cable Designation Area and Route

Parcel boundary



External

Disclaimer

This document is produced for external release. Its conclusions are based on the information currently available to Transpower and may change as further information becomes available either internally or externally.

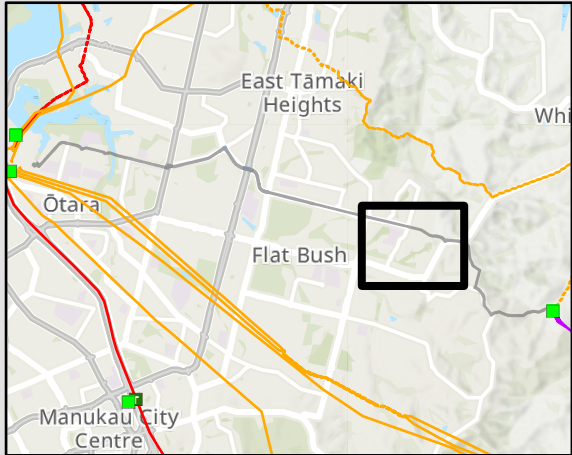
BHL-OTA Cable Designation Area and Route



Legend

BHL-OTA Cable Designation Area and Route

Parcel boundary



External

This document is produced for external release. Its conclusions are based on the information currently available to Transpower and may change as further information becomes available either internally or externally.

Disclaimer



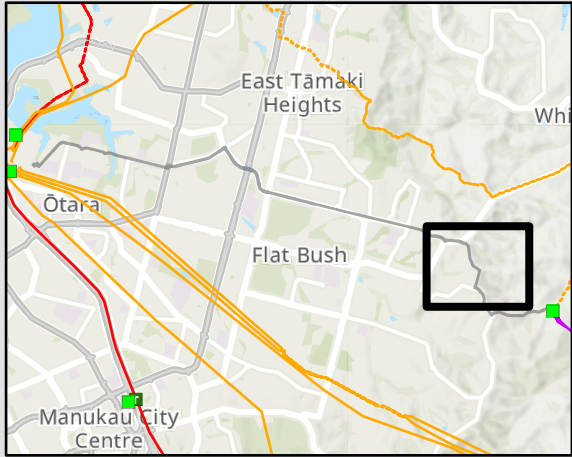
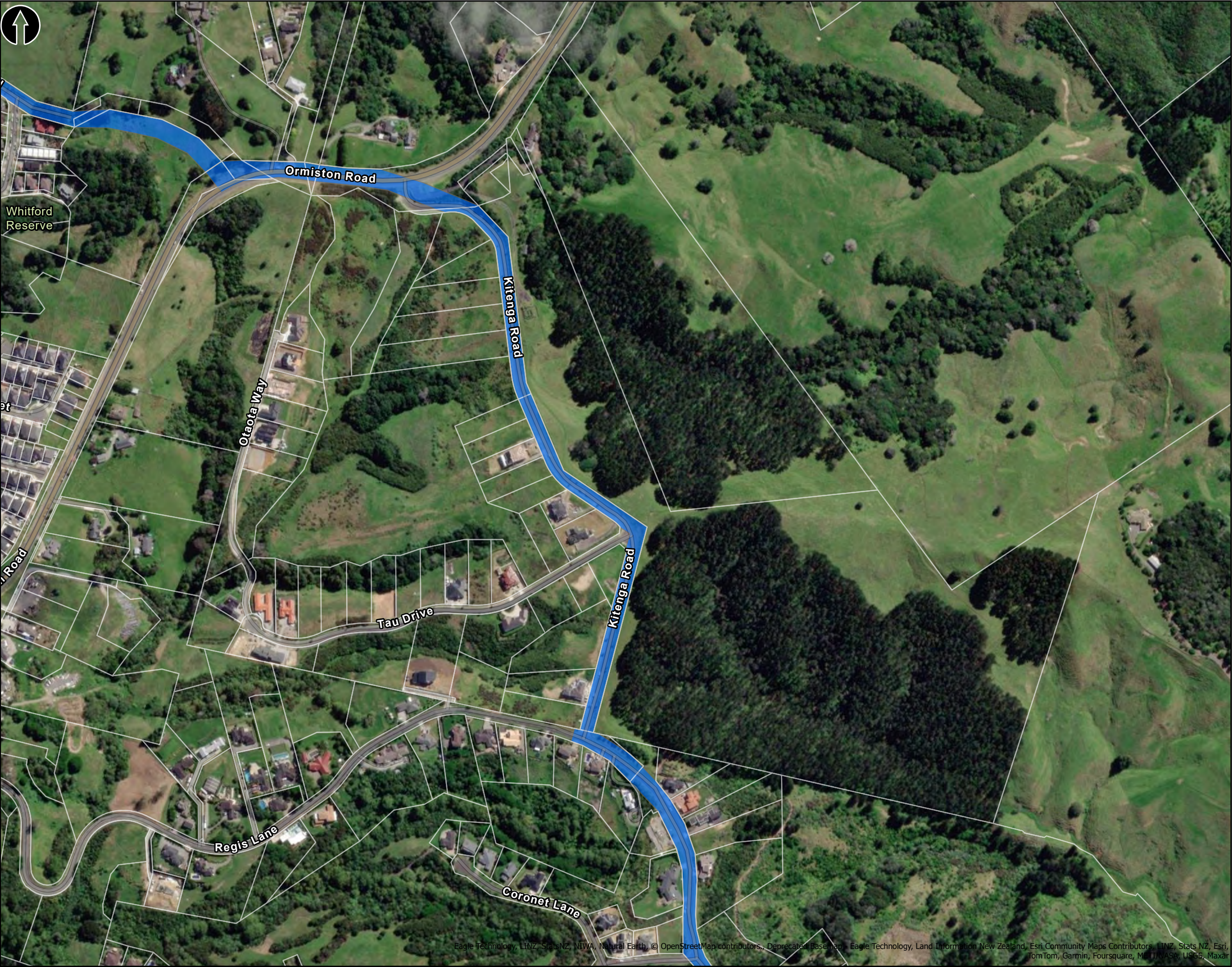
BHL-OTA Cable Designation Area and Route



Legend

BHL-OTA Cable Designation Area and Route

Parcel boundary



External

This document is produced for external release. Its conclusions are based on the information currently available to Transpower and may change as further information becomes available either internally or externally.

Disclaimer

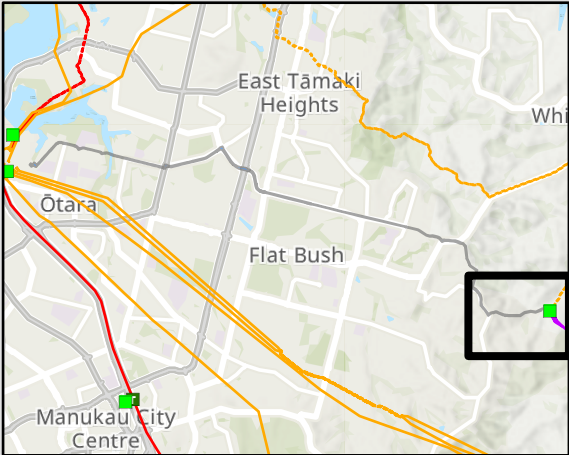
BHL-OTA Cable Designation Area and Route



Legend

BHL-OTA Cable Designation Area and Route

Parcel boundary



External

Disclaimer

This document is produced for external release. Its conclusions are based on the information currently available to Transpower and may change as further information becomes available either internally or externally.



Eagle Technology, LINZ, StatsNZ, NIWA, Natural Earth, © OpenStreetMap contributors., Deprecated Basemap - Eagle Technology, Land Information New Zealand, Map Community Maps Contributors, LINZ, StatsNZ, Esri, TomTom, Garmin, Foursquare, METANASA, USGS, Maxar

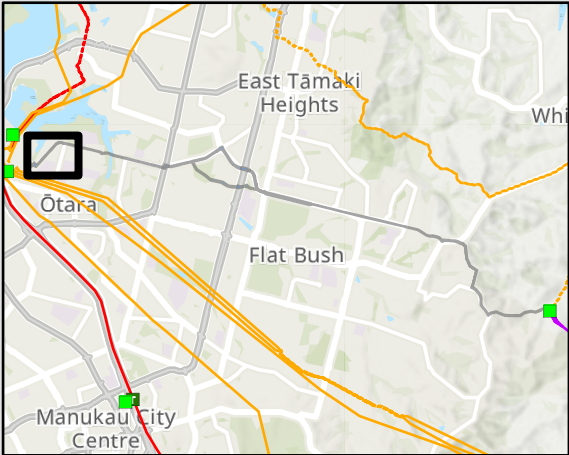
BHL-OTA Cable Designation Area and Route



Legend

Proposed BHL-OTA Designation Alteration

- Existing designated area to be retained
- Proposed additional area to be designated
- Existing designated area to be deleted
- Parcel boundary



External **Disclaimer**
This document is produced for external release. Its conclusions are based on the information currently available to Transpower and may change as further information becomes available either internally or externally.



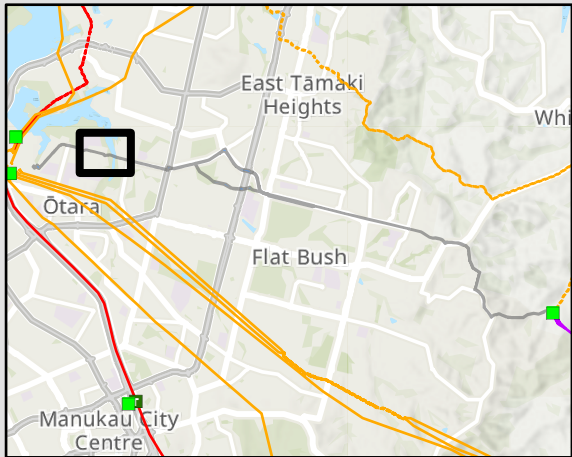
Proposed BHL-OTA Designation Alteration Land Requirement Plan



Legend

Proposed BHL-OTA Designation Alteration

- Existing designated area to be retained
- Proposed additional area to be designated
- Existing designated area to be deleted
- Parcel boundary



External **Disclaimer**
This document is produced for external release. Its conclusions are based on the information currently available to Transpower and may change as further information becomes available either internally or externally.

Proposed BHL-OTA Designation Alteration
Land Requirement Plan



COPYRIGHT © 2024 TRANSPOWER NEW ZEALAND LIMITED. ALL RIGHTS RESERVED
This document is protected by copyright vested in Transpower New Zealand Limited ("Transpower"). No part of the document may be reproduced or transmitted in any form by any means including, without limitation, electronic, photocopying, recording or otherwise, without the prior written permission of Transpower. Information embodied in the documents which is not already in the public domain shall be communicated in any manner whatsoever to any third party without the prior written consent of Transpower. Any breach of the above obligations may be restrained by legal proceedings seeking remedies including injunctions, damages and costs.

Date: 12/06/2024 Drawn by: aldrichh

Legend

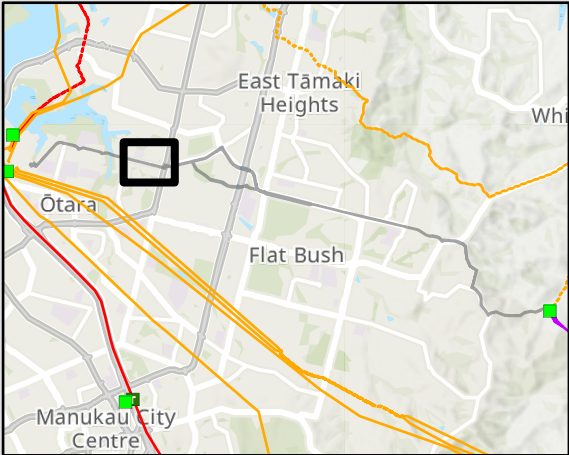
Proposed BHL-OTA Designation Alteration

Existing designated area to be retained

Proposed additional area to be designated

Existing designated area to be deleted

Parcel boundary



External

This document is produced for external release. Its conclusions are based on the information currently available to Transpower and may change as further information becomes available either internally or externally.

Disclaimer



Proposed BHL-OTA Designation Alteration

Land Requirement Plan



COPYRIGHT © 2024 TRANSPOWER NEW ZEALAND LIMITED. ALL RIGHTS RESERVED
This document is protected by copyright vested in Transpower New Zealand Limited ("Transpower"). No part of the document may be reproduced or transmitted in any form by any means including, without limitation, electronic, photocopying, recording or otherwise, without the prior written permission of Transpower. Information embodied in the documents which is not already in the public domain shall be communicated in any manner whatsoever to any third party without the prior written consent of Transpower. Any breach of the above obligations may be restrained by legal proceedings seeking remedies including injunctions, damages and costs.

Legend

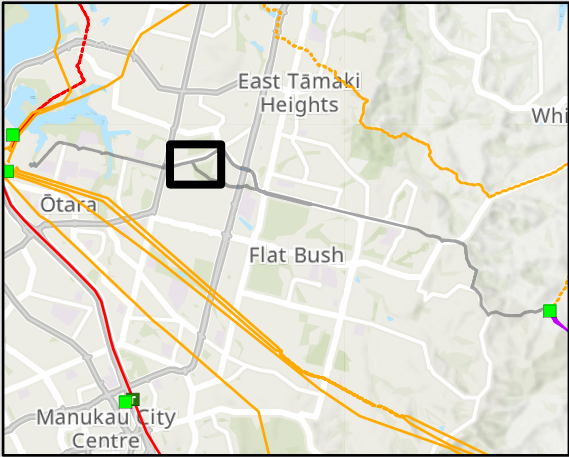
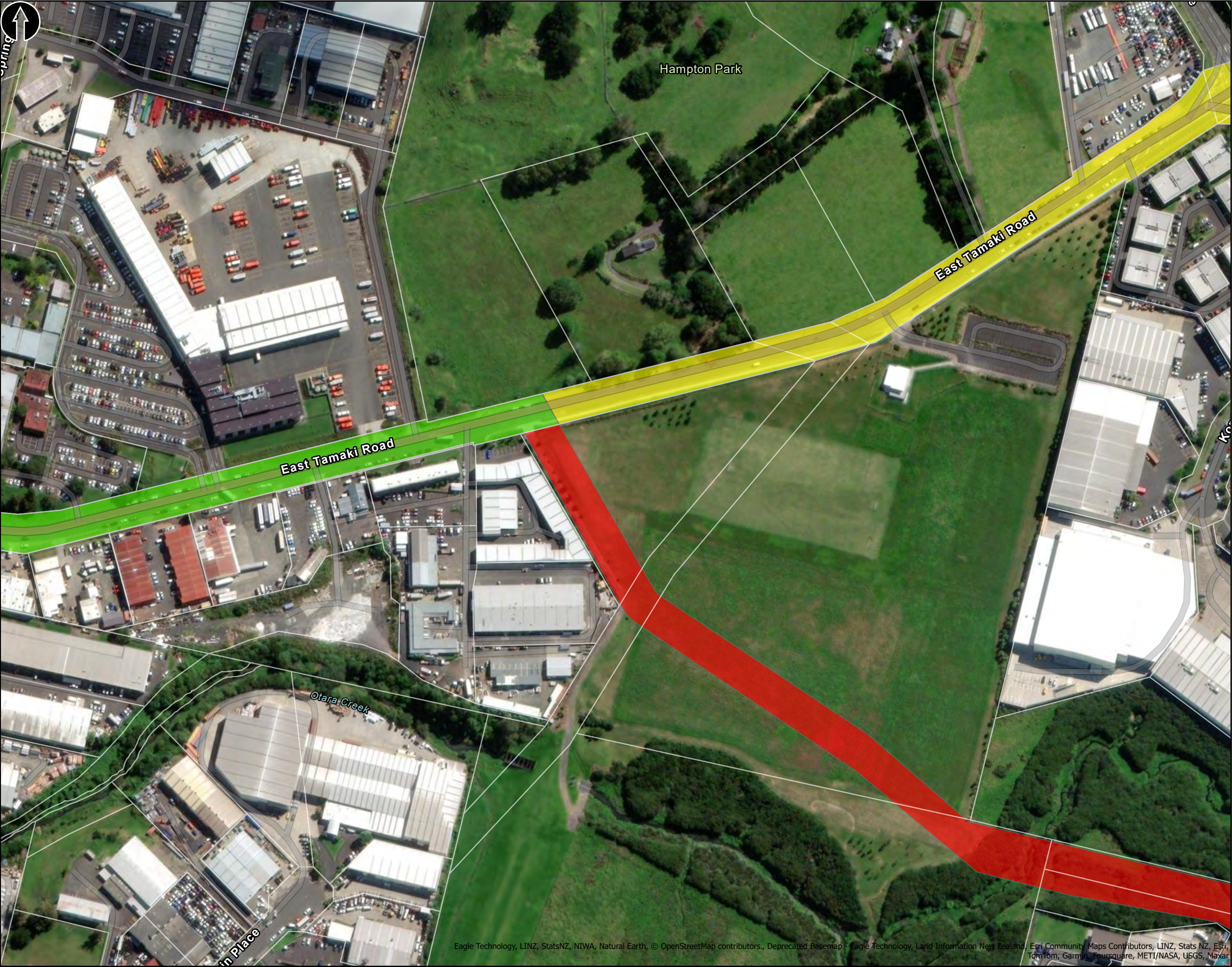
Proposed BHL-OTA Designation Alteration

Existing designated area to be retained

Proposed additional area to be designated

Existing designated area to be deleted

Parcel boundary



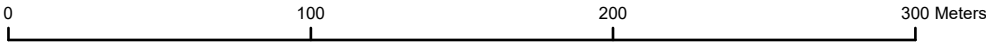
External

This document is produced for external release. Its conclusions are based on the information currently available to Transpower and may change as further information becomes available either internally or externally.

Disclaimer

Proposed BHL-OTA Designation Alteration

Land Requirement Plan



Legend

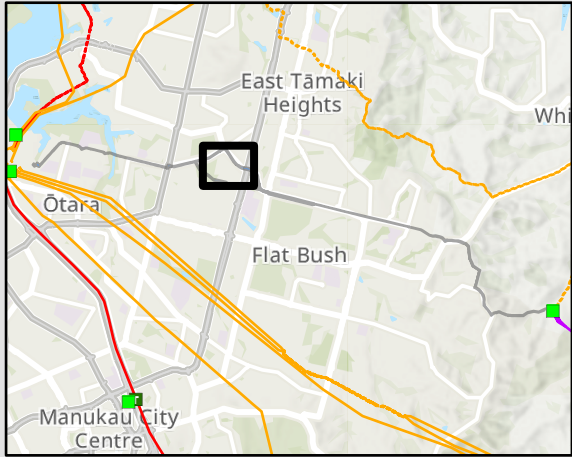
Proposed BHL-OTA Designation Alteration

Existing designated area to be retained

Proposed additional area to be designated

Existing designated area to be deleted

Parcel boundary



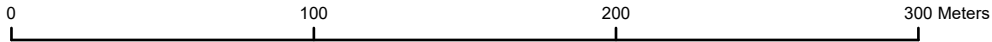
External

This document is produced for external release. Its conclusions are based on the information currently available to Transpower and may change as further information becomes available either internally or externally.

Disclaimer

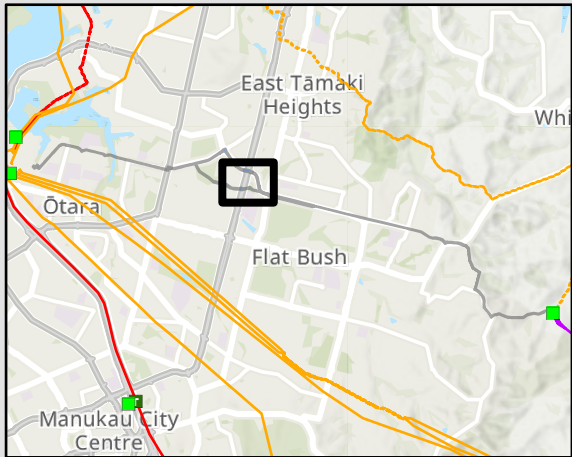
Proposed BHL-OTA Designation Alteration

Land Requirement Plan



Legend
Proposed BHL-OTA Designation Alteration

- Existing designated area to be retained
- Proposed additional area to be designated
- Existing designated area to be deleted
- Parcel boundary



External **Disclaimer**
This document is produced for external release. Its conclusions are based on the information currently available to Transpower and may change as further information becomes available either internally or externally.



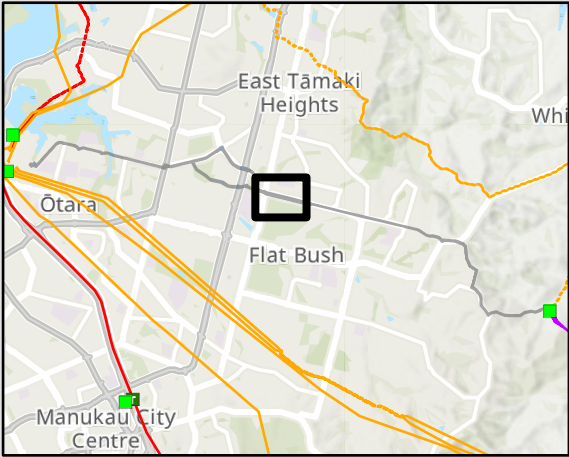
Proposed BHL-OTA Designation Alteration
Land Requirement Plan

COPYRIGHT © 2024 TRANSPOWER NEW ZEALAND LIMITED. ALL RIGHTS RESERVED
This document is protected by copyright vested in Transpower New Zealand Limited ("Transpower"). No part of the document may be reproduced or transmitted in any form by any means including, without limitation, electronic, photocopying, recording or otherwise, without the prior written permission of Transpower. Information embodied in the documents which is not already in the public domain shall be communicated in any manner whatsoever to any third party without the prior written consent of Transpower. Any breach of the above obligations may be restrained by legal proceedings seeking remedies including injunctions, damages and costs.

Legend

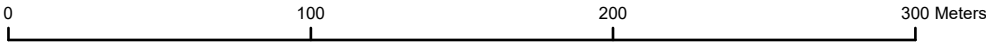
Proposed BHL-OTA Designation Alteration

- Existing designated area to be retained
- Proposed additional area to be designated
- Existing designated area to be deleted
- Parcel boundary



External **Disclaimer**
This document is produced for external release. Its conclusions are based on the information currently available to Transpower and may change as further information becomes available either internally or externally.

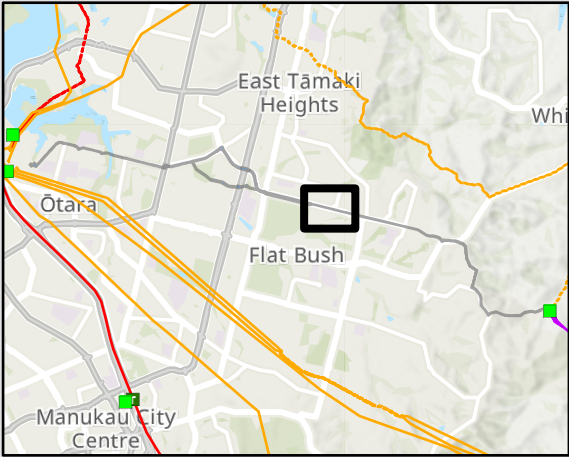
**Proposed BHL-OTA Designation Alteration
Land Requirement Plan**



Legend

Proposed BHL-OTA Designation Alteration

- Existing designated area to be retained
- Proposed additional area to be designated
- Existing designated area to be deleted
- Parcel boundary



External **Disclaimer**
This document is produced for external release. Its conclusions are based on the information currently available to Transpower and may change as further information becomes available either internally or externally.

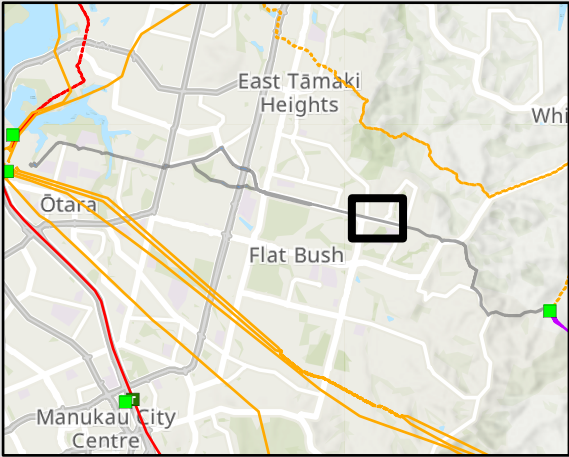
**Proposed BHL-OTA Designation Alteration
Land Requirement Plan**



Legend

Proposed BHL-OTA Designation Alteration

- Existing designated area to be retained
- Proposed additional area to be designated
- Existing designated area to be deleted
- Parcel boundary



External **Disclaimer**
This document is produced for external release. Its conclusions are based on the information currently available to Transpower and may change as further information becomes available either internally or externally.

**Proposed BHL-OTA Designation Alteration
Land Requirement Plan**



Legend

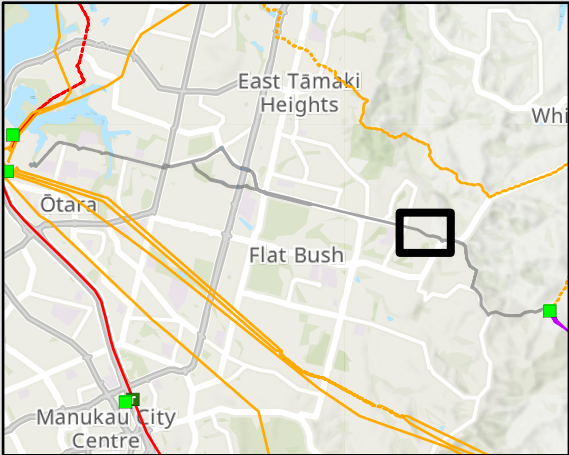
Proposed BHL-OTA Designation Alteration

Existing designated area to be retained

Proposed additional area to be designated

Existing designated area to be deleted

Parcel boundary



External

This document is produced for external release. Its conclusions are based on the information currently available to Transpower and may change as further information becomes available either internally or externally.

Disclaimer

Proposed BHL-OTA Designation Alteration

Land Requirement Plan



Legend

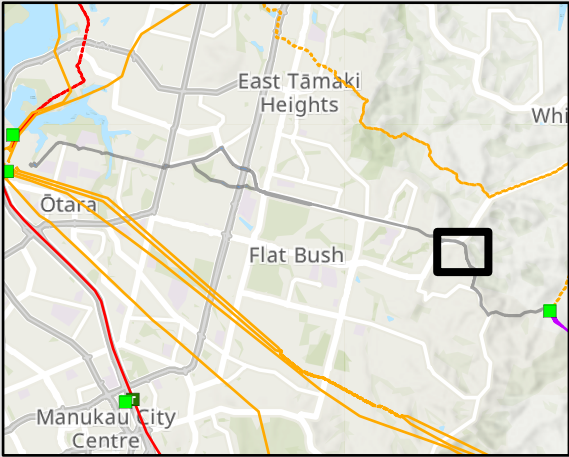
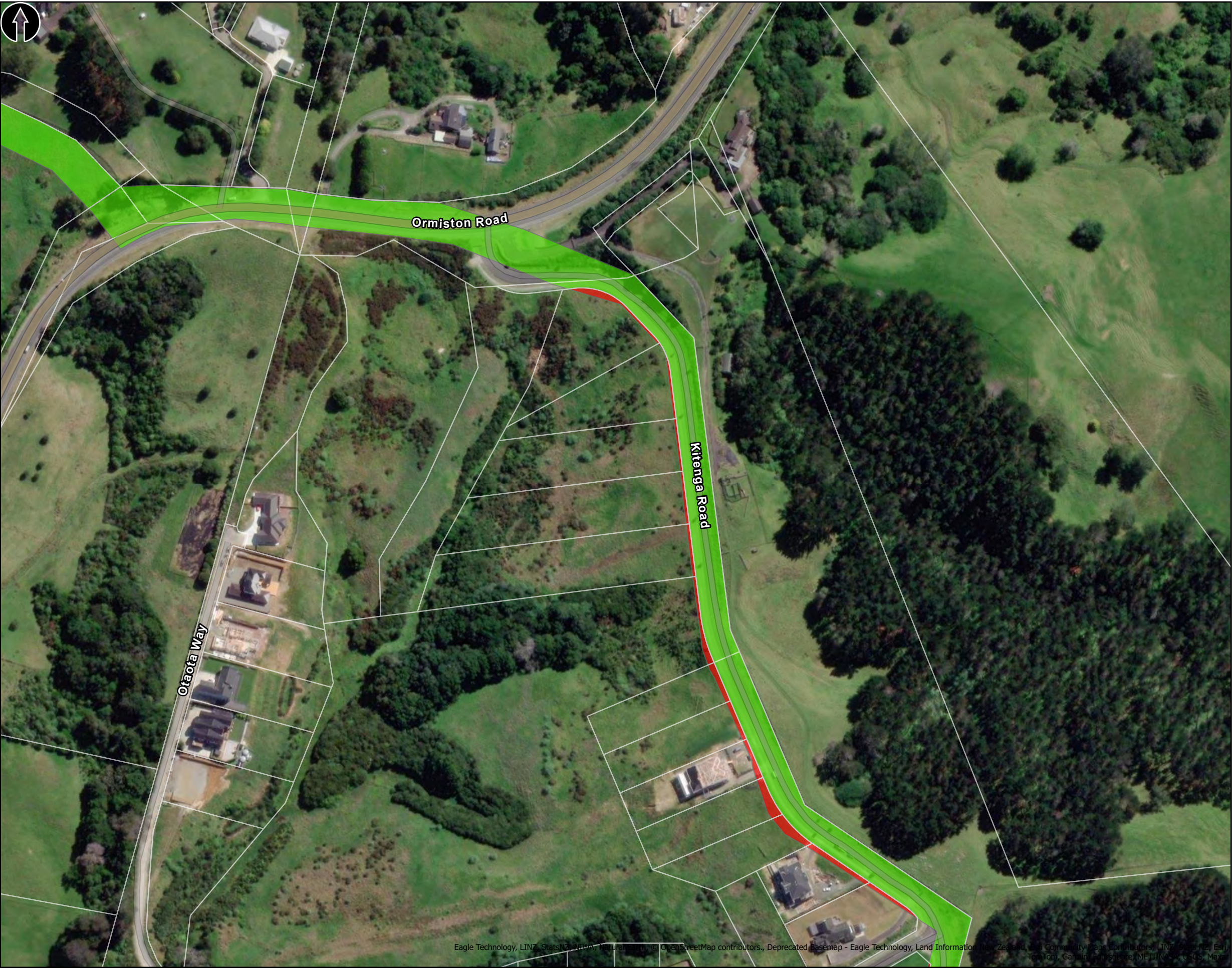
Proposed BHL-OTA Designation Alteration

Existing designated area to be retained

Proposed additional area to be designated

Existing designated area to be deleted

Parcel boundary



External

This document is produced for external release. Its conclusions are based on the information currently available to Transpower and may change as further information becomes available either internally or externally.

Disclaimer

Proposed BHL-OTA Designation Alteration Land Requirement Plan



Legend

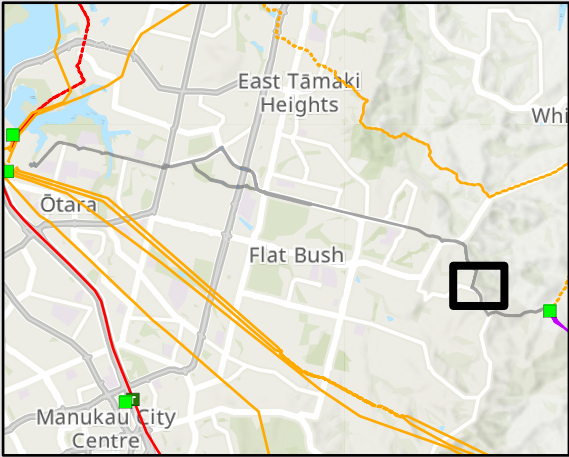
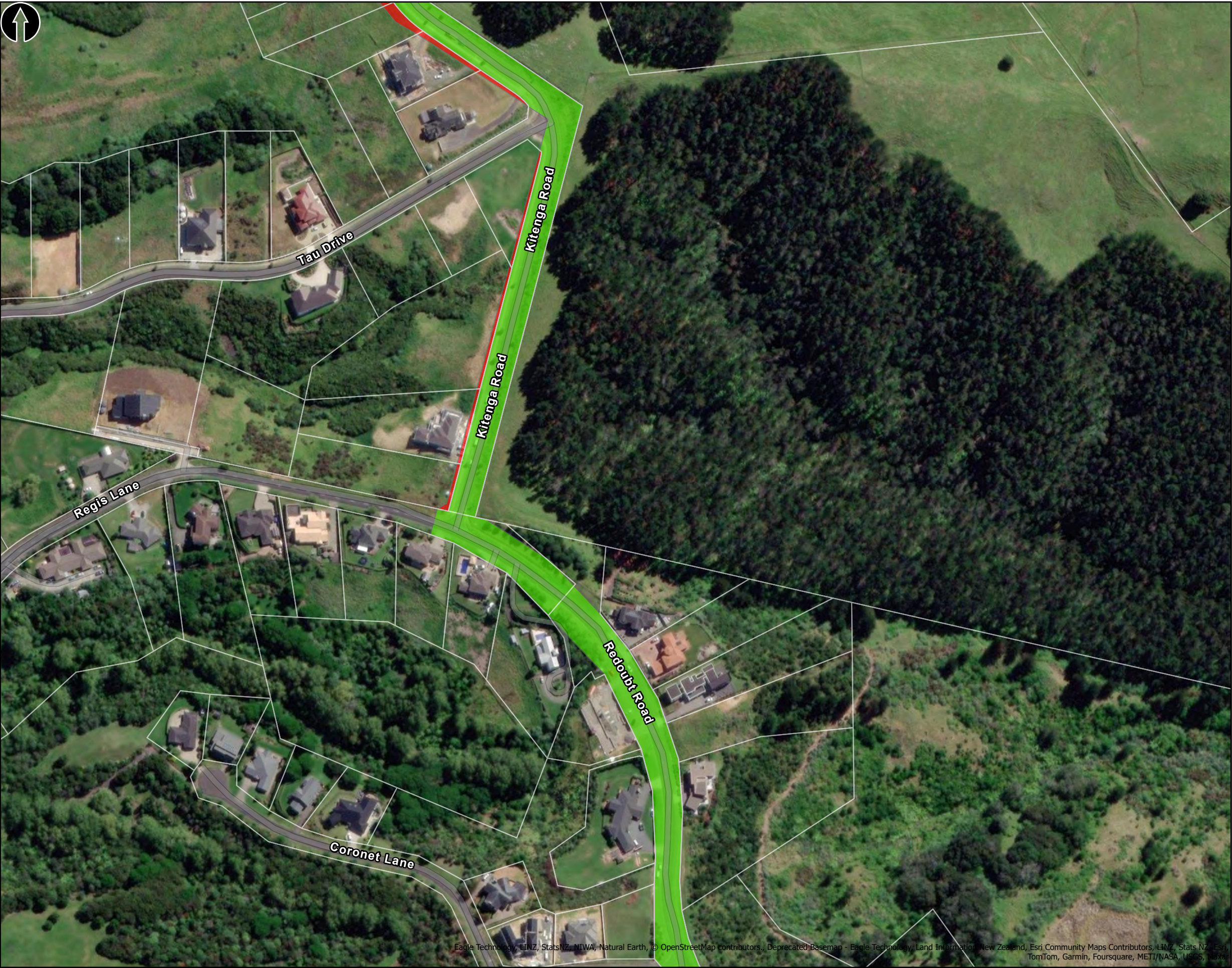
Proposed BHL-OTA Designation Alteration

Existing designated area to be retained

Proposed additional area to be designated

Existing designated area to be deleted

Parcel boundary



External

This document is produced for external release. Its conclusions are based on the information currently available to Transpower and may change as further information becomes available either internally or externally.

Disclaimer

Proposed BHL-OTA Designation Alteration

Land Requirement Plan



Legend

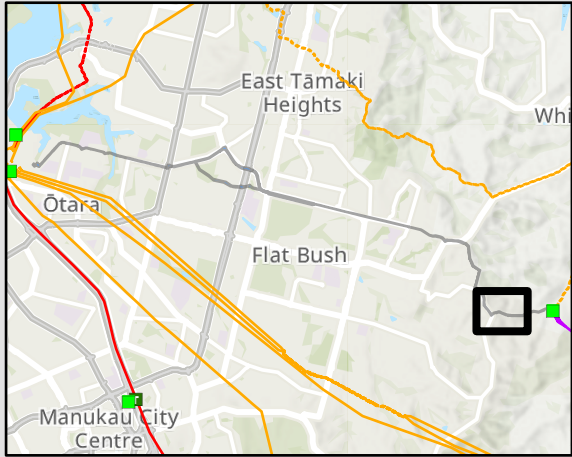
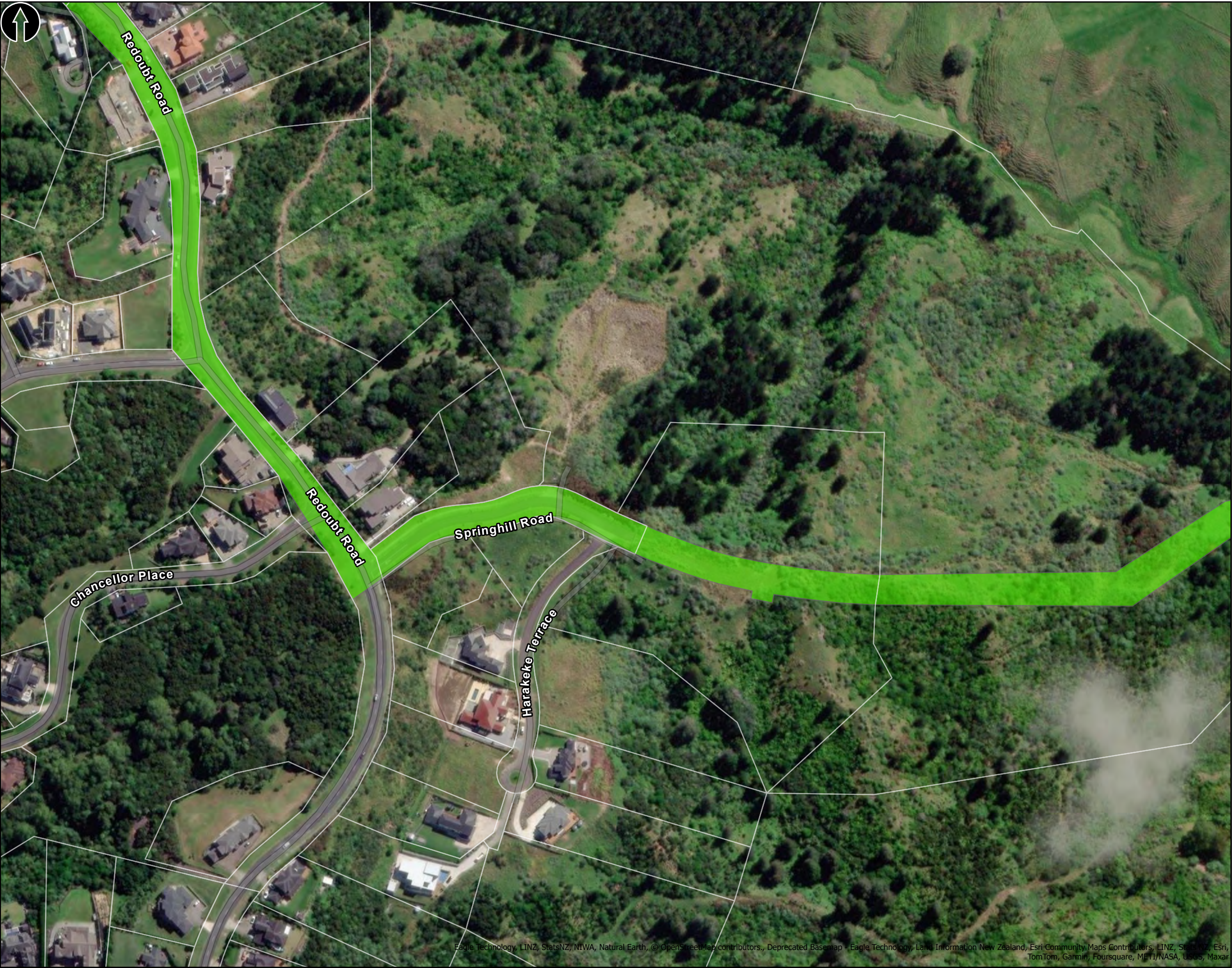
Proposed BHL-OTA Designation Alteration

Existing designated area to be retained

Proposed additional area to be designated

Existing designated area to be deleted

Parcel boundary



External

This document is produced for external release. Its conclusions are based on the information currently available to Transpower and may change as further information becomes available either internally or externally.

Disclaimer

Proposed BHL-OTA Designation Alteration

Land Requirement Plan



Legend

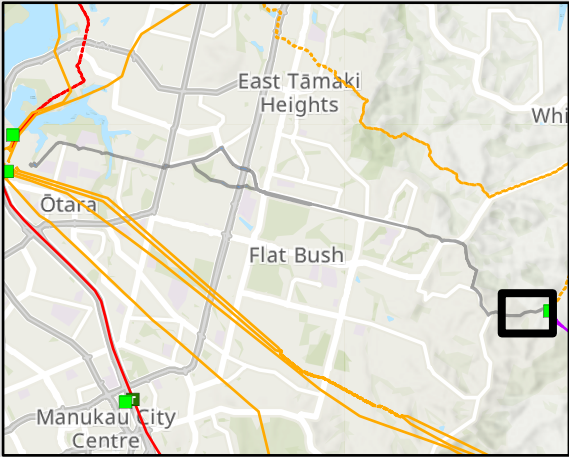
Proposed BHL-OTA Designation Alteration

Existing designated area to be retained

Proposed additional area to be designated

Existing designated area to be deleted

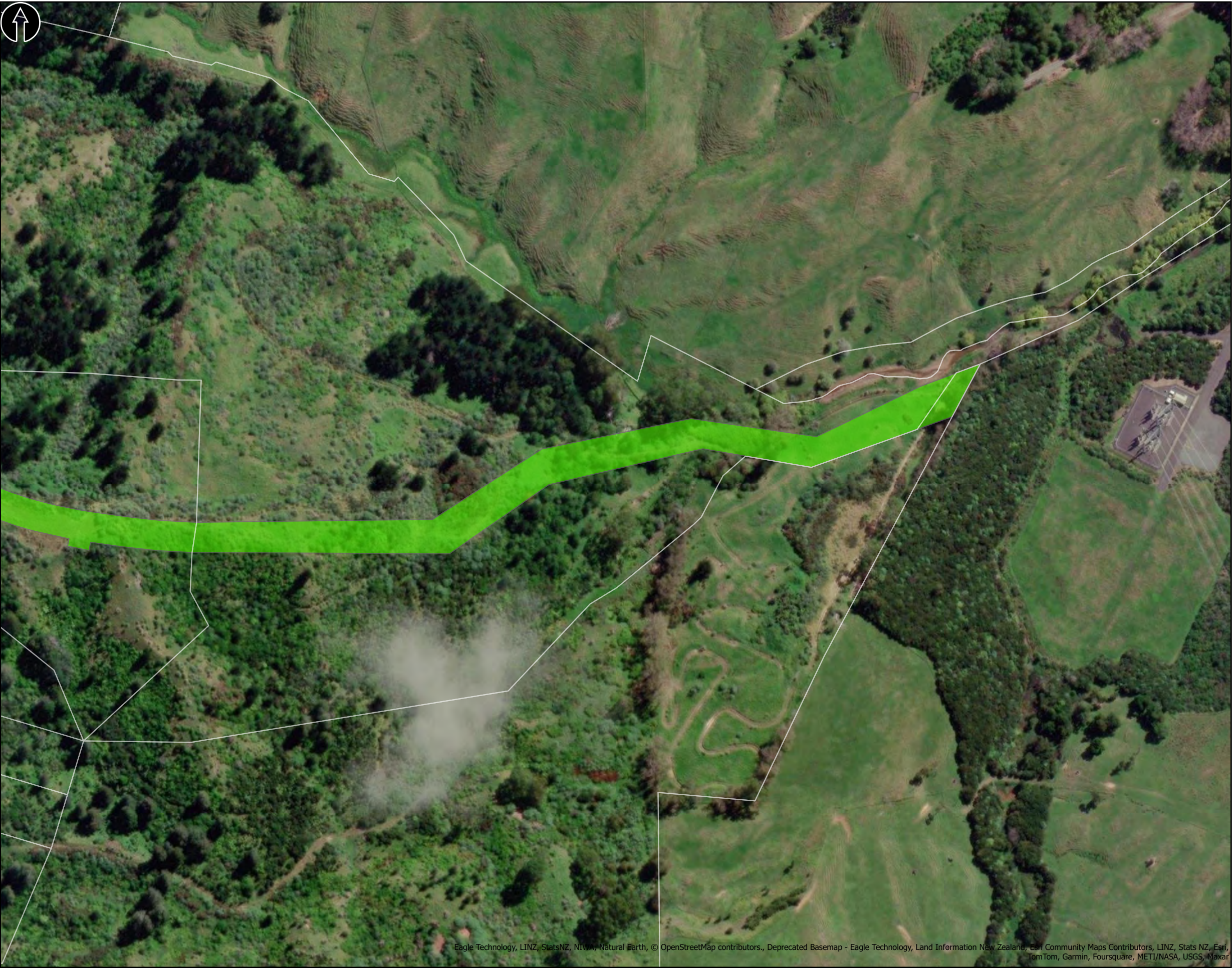
Parcel boundary



External

This document is produced for external release. Its conclusions are based on the information currently available to Transpower and may change as further information becomes available either internally or externally.

Disclaimer



Proposed BHL-OTA Designation Alteration Land Requirement Plan





- 1) All Dimensions are in mm.
- 2) Road base and Sub-base coarse are to be done by Developer.
- 3) The natural T/R value is calculated at 1.2 K.m/W.
- 4) Backfill T/R value is 1.1 K.m/W. (Dryout condition)
- 5) The duct containing DTS cable shall be fasten by cable-tie in every 2m.
- 6) If the width of trench is less than 5m, Re-calculation is required.
- 7) Polymeric cable protection covers (Magslab) will be used for instead of Con'c slab.
- 8) Entire Thermally Stable backfill shall be enclosed within a Geotextile (e.g. Cirtex Duraforce AS280TP or similar)

TRANSPower

©COPYRIGHT 2020 ALL RIGHTS RESERVED TRANSPOWER NEW ZEALAND LIMITED.
UNAUTHORISED USE IS STRICTLY PROHIBITED BY NEW ZEALAND COPYRIGHT LAW.

For 220kV 1C*2500sqmm Cable System
Typical Trench Drawing

DRAWING NUMBER
TP203722

SHEET	REVISION
1	A

SCALE
N.T.S.