

Memo

Date 17 April 2025

To: Celia Davison - Manager Planning – Central / South
From: Joy LaNauze – Senior Policy Planner, Planning – Central / South
Subject: **Plan Modification: Clause 20A error correction to Auckland Unitary Plan (Operative in Part 2016)**

I seek your approval to correct an error pursuant to clause 20A, schedule 1, Resource Management Act 1991:


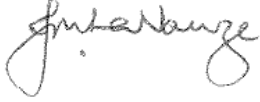


A local authority may amend, without using the process in this schedule, an operative policy statement or plan to correct any minor errors.

You have delegated authority, as a tier four manager, to make a decision to correct an error under clause 20A. Schedule 2A of the “Chief Executive’s Delegations Register, March 2025, Version 1.8” authorises all powers, functions, and duties under RMA’s first schedule (except clause 17 which cannot be delegated) to tier four positions.

| | |
|---|---|
| Provision in AUP | N/A |
| Subject site and legal description (if applicable) | <p>Multiple sites within the existing National Grid Corridor Overlay between 153 Barber Road, Bombay to 656 Great South Road, Manukau (Bombay to Wiri section of Transpower’s Bombay - Otahuhu - A 110kV Transmission Line)</p> <p>Attachment 1 contains Transpower’s removal request dated 13 March 2025. Please refer to Attachments 2 and 3 for the mapping and corresponding addresses of the properties affected by the removal.</p> |
| Nature of error | Implementing the automatic removal of part of the National Grid Corridor Overlay in accordance with Chapter D26 National Grid Corridor Overlay of the AUP. |
| Effect of change | <p>Modification is required to the National Grid Corridor overlay which is an Infrastructure Overlay on the AUP GIS viewer maps.</p> <p>That part of the National Grid Corridor Overlay notation relating to Transpower’s 110kV transmission line between its Bombay and Wiri Substations is therefore no longer required, so will be removed from the Auckland Unitary Plan (Operative in Part) maps.</p> <p>Some properties will remain subject to other National Grid Corridor Overlay/s, so the overlay will only be partially removed from those sites.</p> <p>This removal affects areas within the:</p> <ul style="list-style-type: none"> • National Grid Corridor Overlay - National Grid Subdivision Corridor • National Grid Corridor Overlay - National Grid Yard Compromised • National Grid Corridor Overlay - National Grid Yard Uncompromised <p>Discussion</p> <p>Transpower New Zealand Limited (Transpower) has completed works to dismantle a transmission line between Bombay to Wiri section of the Bombay-Otahuhu-A 110kV.</p> |

| | |
|---|---|
| | <p>Transpower has requested, in a letter dated 13 March 2025, that this section of the National Grid Corridor Overlay be uplifted from the AUP GIS maps in accordance with Chapter D.26 National Grid Corridor Overlay in the AUP (refer to Attachment 1).</p> <p>Chapter D26.4 Activity Table, paragraph 7, requires an automatic update for removals of the National Grid Corridor Overlay [emphasis in bold added]:</p> <p><i>The National Grid Corridor Overlay rules cease to have effect and the maps can be updated accordingly where:</i></p> <p>a) a National Grid line or part of a line is dismantled, undergrounded or moved;</p> <p>or</p> <p>b) a National Grid substation is dismantled, or the site boundary of a National Grid substation reduces in size;</p> <p><i>and the following has occurred:</i></p> <p>c) Transpower New Zealand Limited has advised the Council in writing;</p> <p>and</p> <p>d) The council has advised owners of the property from which the overlay will be removed in writing;</p> <p><i>That the National Grid Corridor Overlay provisions are no longer required for that line or part of that line, or for that substation or that part of that substation.</i></p> <p>As required by c), Transpower has advised the Council in writing. As required by d), Council has advised, in writing, the owners of the properties from which the overlay will be fully or partially removed.</p> <p>Transpower has provided a shapefile for the removal of the National Grid Corridor Overlay from the currently affected properties. Council's updated mapping has been reviewed by Transpower to confirm that Council is uplifting the correct sections of the National Grid Corridor Overlay from the AUP GIS viewer maps.</p> <p>The effect of the removal of the overlay from the AUP GIS viewer maps is considered neutral.</p> <p>However, there is a benefit to the properties identified in Attachments 2 and 3 as the overlay will be fully or partially removed from these properties, which will no longer be subject to all or some of the provisions of Chapter D26 National Grid Corridor Overlay.</p> |
| Changes required to be made (text and/or in-text diagrams) | N/A |
| Changes required to be made (AUP or HGI maps) | Amend the Infrastructure Overlay in the AUP maps to reflect updates to the National Grid Corridor Overlay following the removal of the National Grid Corridor Overlay notation relating to Transpower's 110kV transmission line |

| | |
|--------------------|--|
| | <p>between its Bombay and Wiri Substations:</p> <ul style="list-style-type: none"> • National Grid Corridor Overlay – National Grid Subdivision Corridor • National Grid Corridor Overlay – National Grid Yard Uncompromised • National Grid Corridor Overlay – National Grid Yard Uncompromised <p>[Note that the existing National Grid Corridor Overlay – National Grid Substation Corridor surrounds the Bombay Substation and lies beneath the National Grid Corridor Overlay – National Grid Subdivision Corridor, and beneath the National Grid Corridor Overlay – National Grid Yard. The National Grid Corridor Overlay – National Grid Substation Corridor will be visible on the planning maps once the other overlays are removed.]</p> |
| Attachments | <p>Attachment 1: Transpower New Zealand Limited – National Grid Corridor Overlay uplift request dated 13 March 2025 relating to the location of the now dismantled Bombay to Wiri section of the Bombay-Otahuhu-A 110kV.</p> <p>Attachment 2: Council GIS maps (6 pages) showing required National Grid Corridor overlay amendments to reflect updates to the National Grid Corridor Overlay following the removal of the National Grid Corridor Overlay notation relating to Transpower’s 110kV transmission line between its Bombay and Wiri Substations. GIS maps (2 pages) showing properties subject to full and partial overlay removal.</p> <p>Attachment 3: Spreadsheets identifying property addresses which are fully or partially affected by the removal of the National Grid Corridor Overlay notation relating to Transpower’s 110kV transmission line between its Bombay and Wiri Substations.</p> |

| | |
|--|--|
| Maps prepared by: Rachel Joseph Geospatial Specialist | Text Entered by: Planning Technician |
| Signature:  | Signature: N/A |
| Prepared by: Joy LaNauze, Senior Policy Planner | Reviewed by: Craig Cairncross Team Leader Central / South |
| Signature:  | Signature:  |
| Decision: I agree to correct the error under clause 20A, schedule 1, RMA 1991 using my delegated authority Celia Davison Manager Planning – Central / South Date: 17 April 2025 | |
| Signature:  (signed by Marc Dendale, acting with delegated authority for Celia Davison) | |

Attachment 1

Transpower New Zealand Limited request

Email application from Transpower dated 13 March 2025

Bombay-Wiri Transmission Line NG Overlay Uplift

From: John Sutherland <john.sutherland@transpower.co.nz>
Sent: Thursday, 13 March 2025 10:33 am
To: Unitary Plan <unitaryplan@aucklandcouncil.govt.nz>
Cc: Craig Cairncross <Craig.Cairncross@aucklandcouncil.govt.nz>
Subject: Transpower - Uplift of National Grid Corridor Overlay

Kia ora,

I email to seek amendment to the National Grid Corridor Overlay displayed on the Auckland Unitary Plan planning maps. Transpower has recently completed works to dismantle the 110kV transmission line between its Bombay and Wiri Substations, therefore the corresponding National Grid Corridor Overlay that applies to this transmission line is no longer required. The image at the end of this email shows where the transmission line was located.

In accordance with D26.4 of the Auckland Unitary Plan (Operative in Part), The National Grid Corridor Overlay rules cease to have effect and the maps can be updated accordingly where:

- a. a National Grid line is dismantled;
- b. Transpower has advised the Council in writing; and
- c. Auckland Council has advised owners of the property from which the Overlay will be removed in writing.

This email is Transpower's written confirmation that the Bombay to Wiri section of the Bombay-Otahuhu-A 110kV transmission line has now been dismantled and the corresponding National Grid Corridor Overlay rules are no longer required and the AUP maps showing the Overlay can be updated.

The above is reflected in the attached shapefile prepared by Transpower geospatial staff. The GIS data supplied is an ESRI file geodatabase in terms of NZGD2000 New Zealand Transverse Mercator. Some parts of National Grid Corridor that applies to the BOB-WIR 110kV line interacts and overlaps with other areas of National Grid Corridor Overlay that apply to other transmission lines and substations. The way this Overlay is represented, removal of the Overlay corresponding to the BOB-WIR line would inadvertently create gaps in the Overlay for other electricity transmission infrastructure where they overlap. The attached shapefile includes

'remain' data to ensure Overlays that apply to other electricity transmission infrastructure is accurate. If Council geospatial staff have issues with this shapefile, I can have Heath Aldrich from the Transpower geospatial team liaise directly with Council geospatial staff.

Please let me know if you require any further information to progress this request.



Ngā mihi,

John

JOHN SUTHERLAND

Senior Environmental Planner

Environment Group

Transpower New Zealand Ltd | The National Grid
31 Gilberthorpes Road, Islington 8042, Christchurch

P 03 590 8551

M 027 856 5892

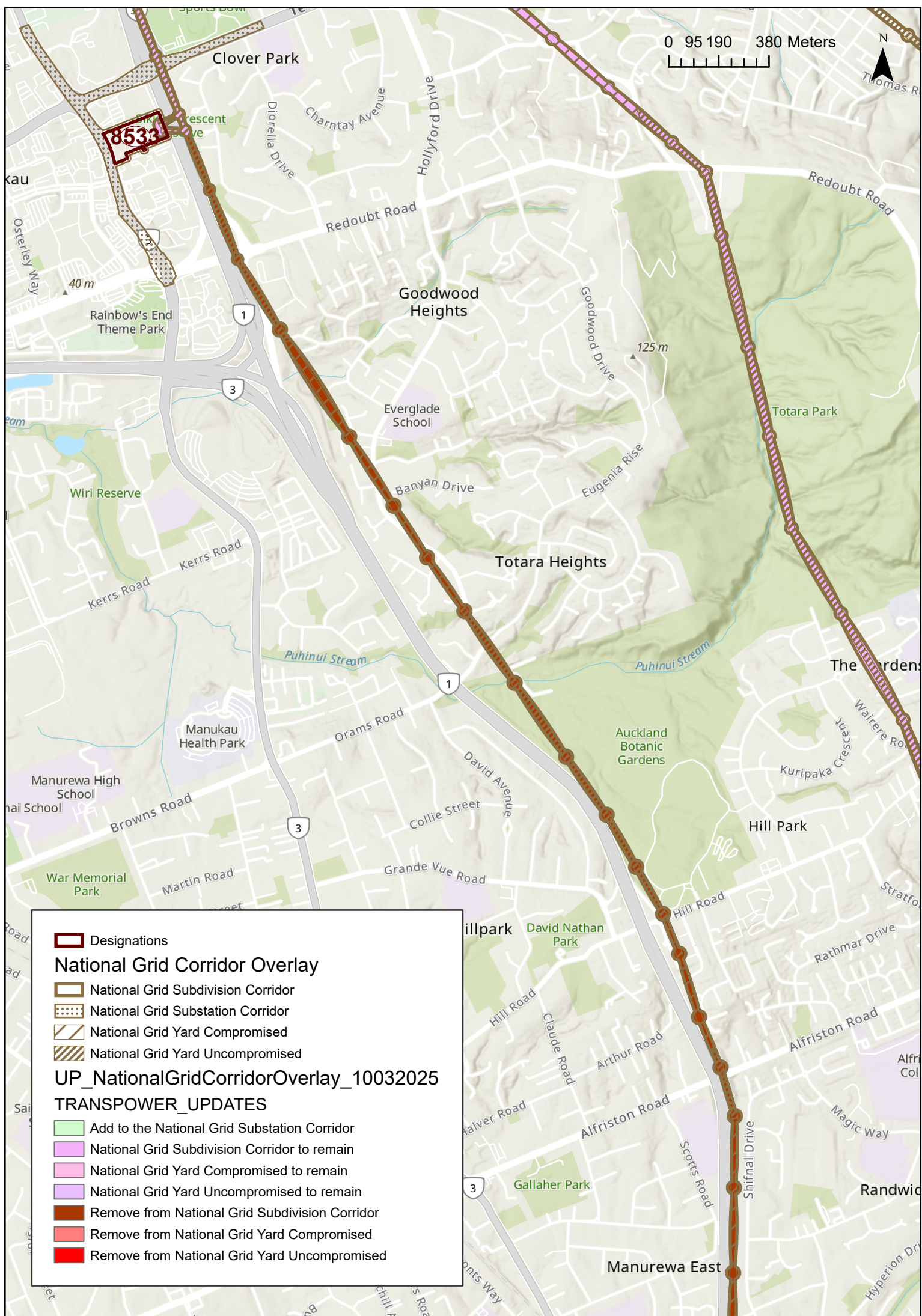
transpower.co.nz

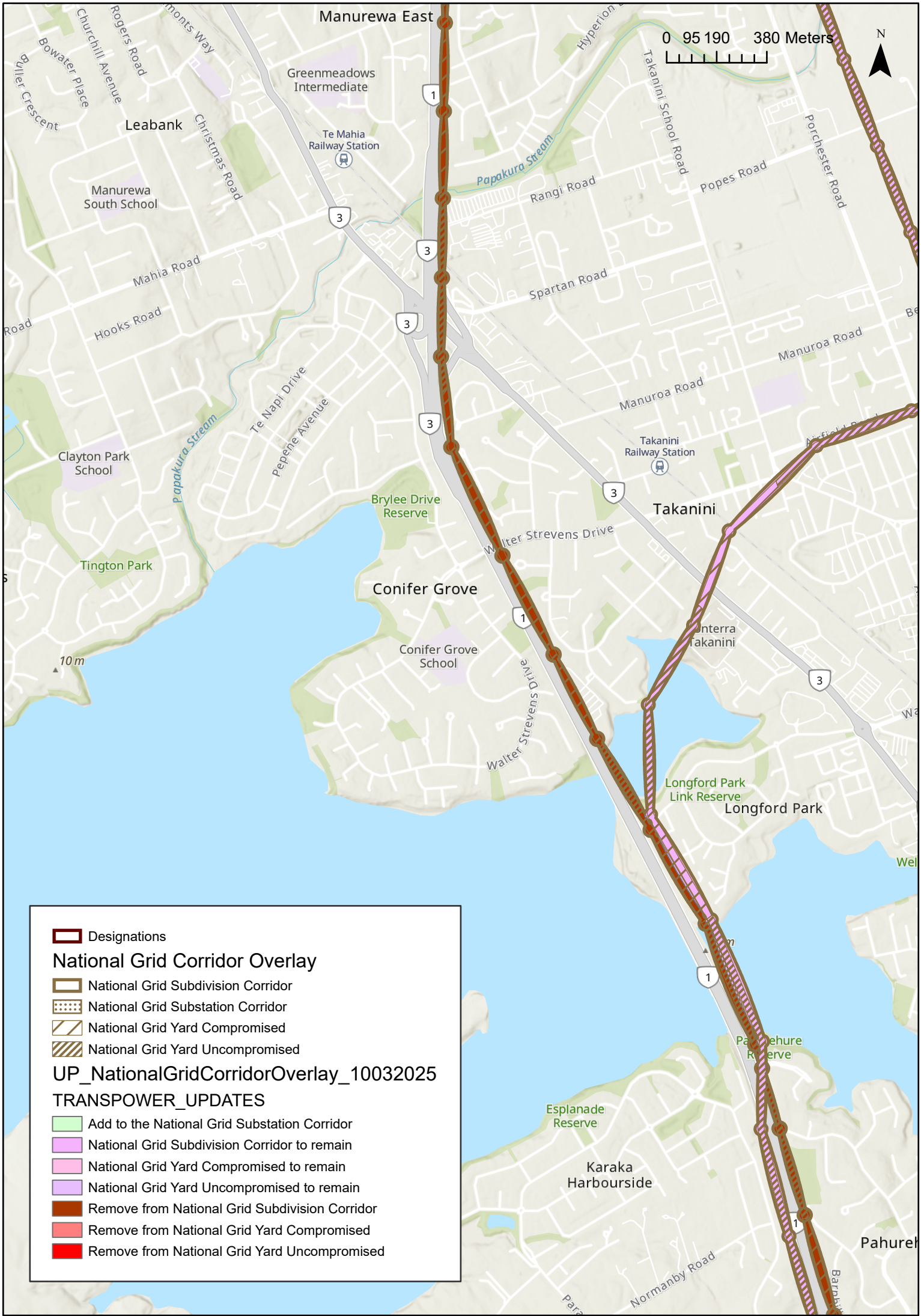


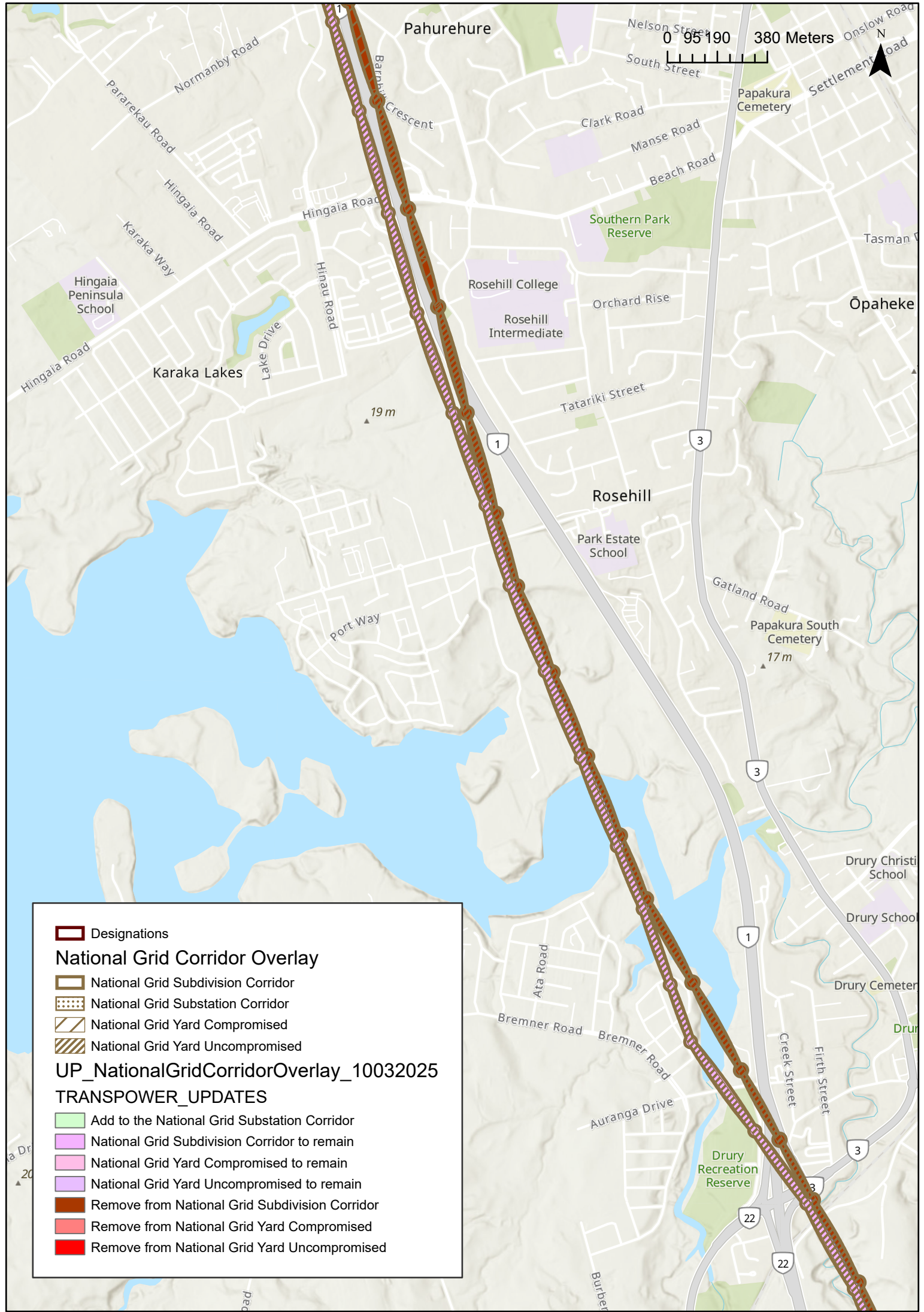
Attachment 2

Auckland Unitary Plan GIS Viewer

Showing National Grid Overlay amendments







Designations

National Grid Corridor Overlay

National Grid Subdivision Corridor

National Grid Substation Corridor

National Grid Yard Compromised

National Grid Yard Uncompromised

UP_NationalGridCorridorOverlay_10032025

TRANSPower_UPDATES

Add to the National Grid Substation Corridor

National Grid Subdivision Corridor to remain

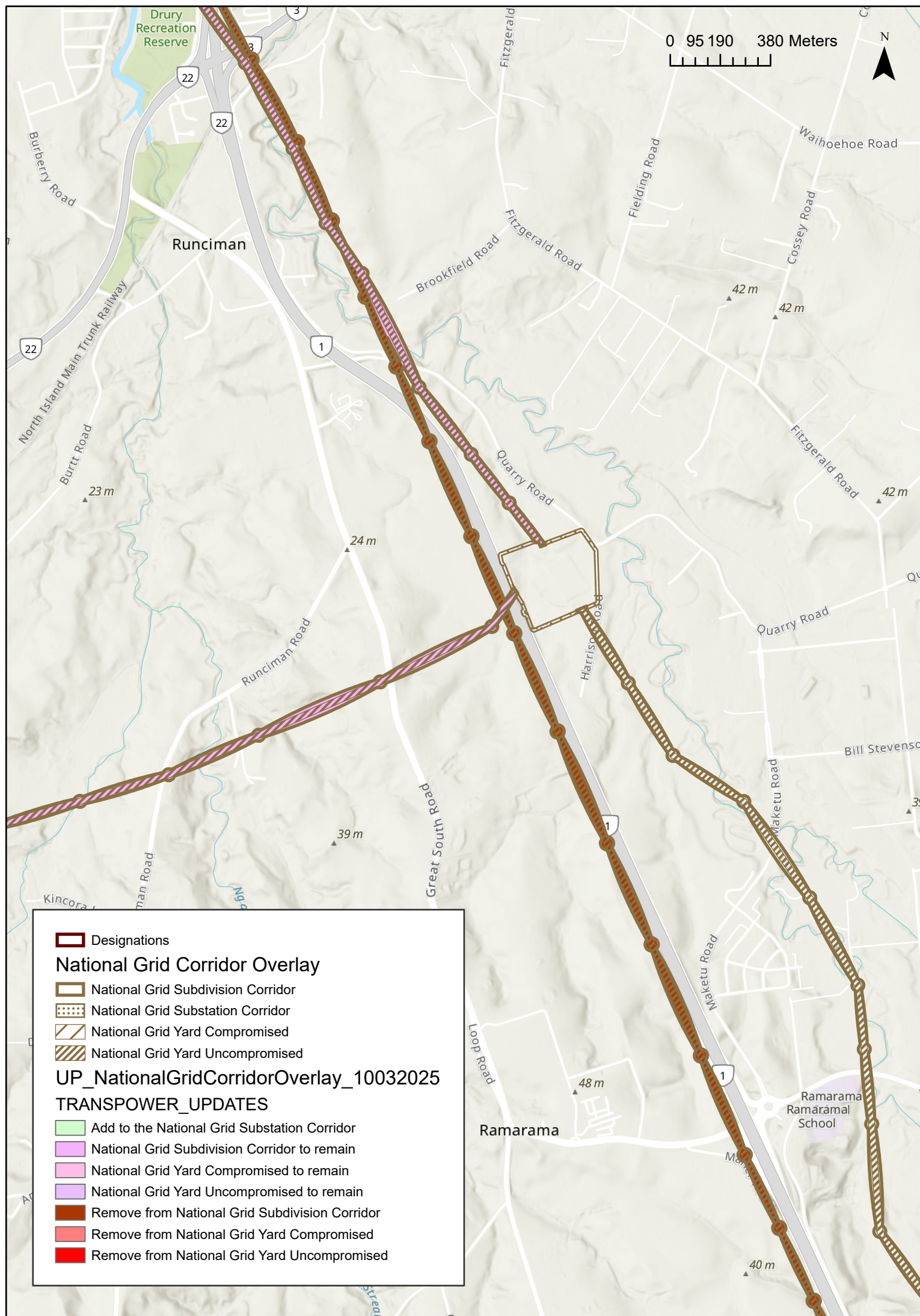
National Grid Yard Compromised to remain

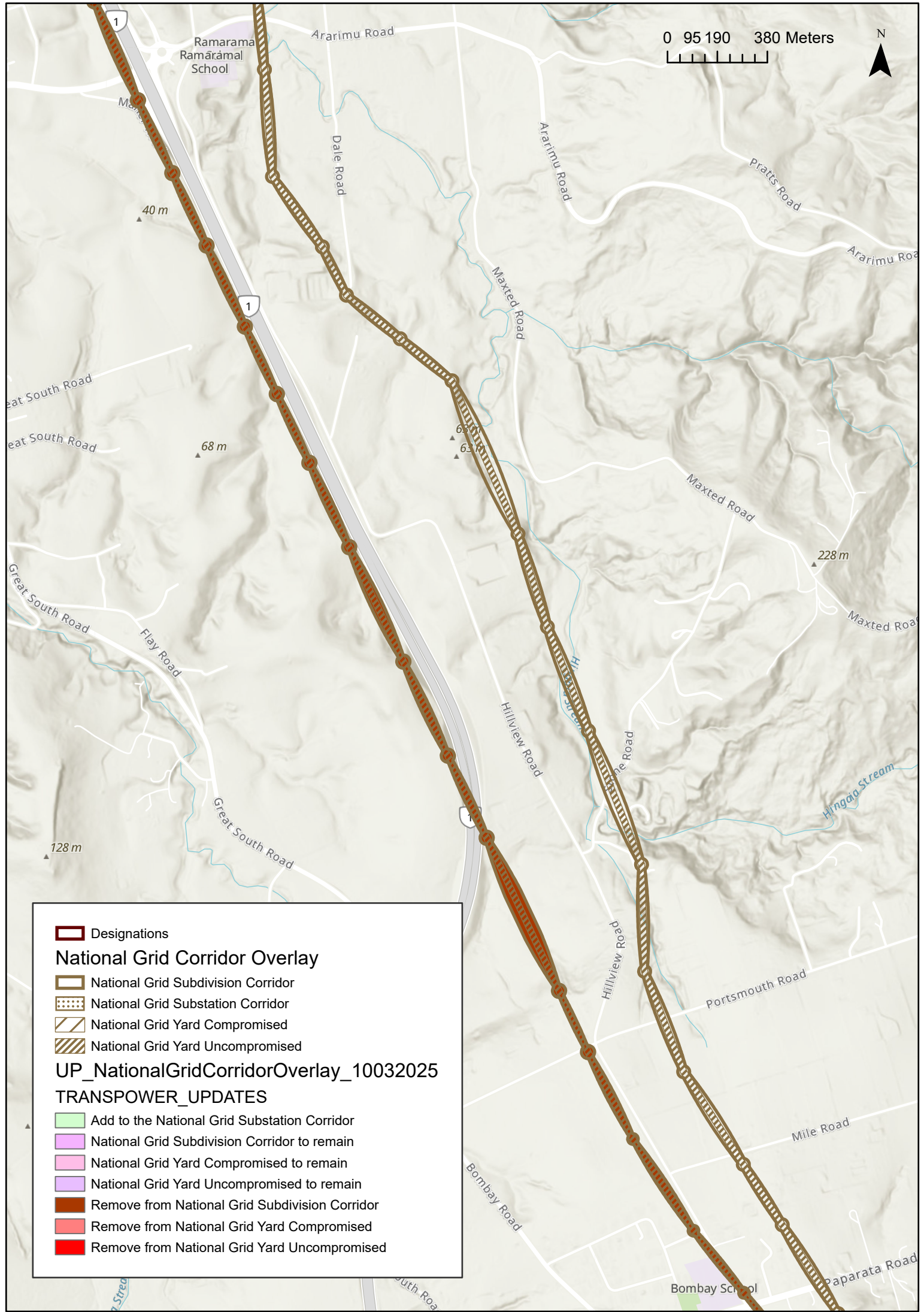
National Grid Yard Uncompromised to remain

Remove from National Grid Subdivision Corridor

Remove from National Grid Yard Compromised

Remove from National Grid Yard Uncompromised





Designations

National Grid Corridor Overlay

National Grid Subdivision Corridor

National Grid Substation Corridor

National Grid Yard Compromised

National Grid Yard Uncompromised

UP_NationalGridCorridorOverlay_10032025

TRANSPower_UPDATES

Add to the National Grid Substation Corridor

National Grid Subdivision Corridor to remain

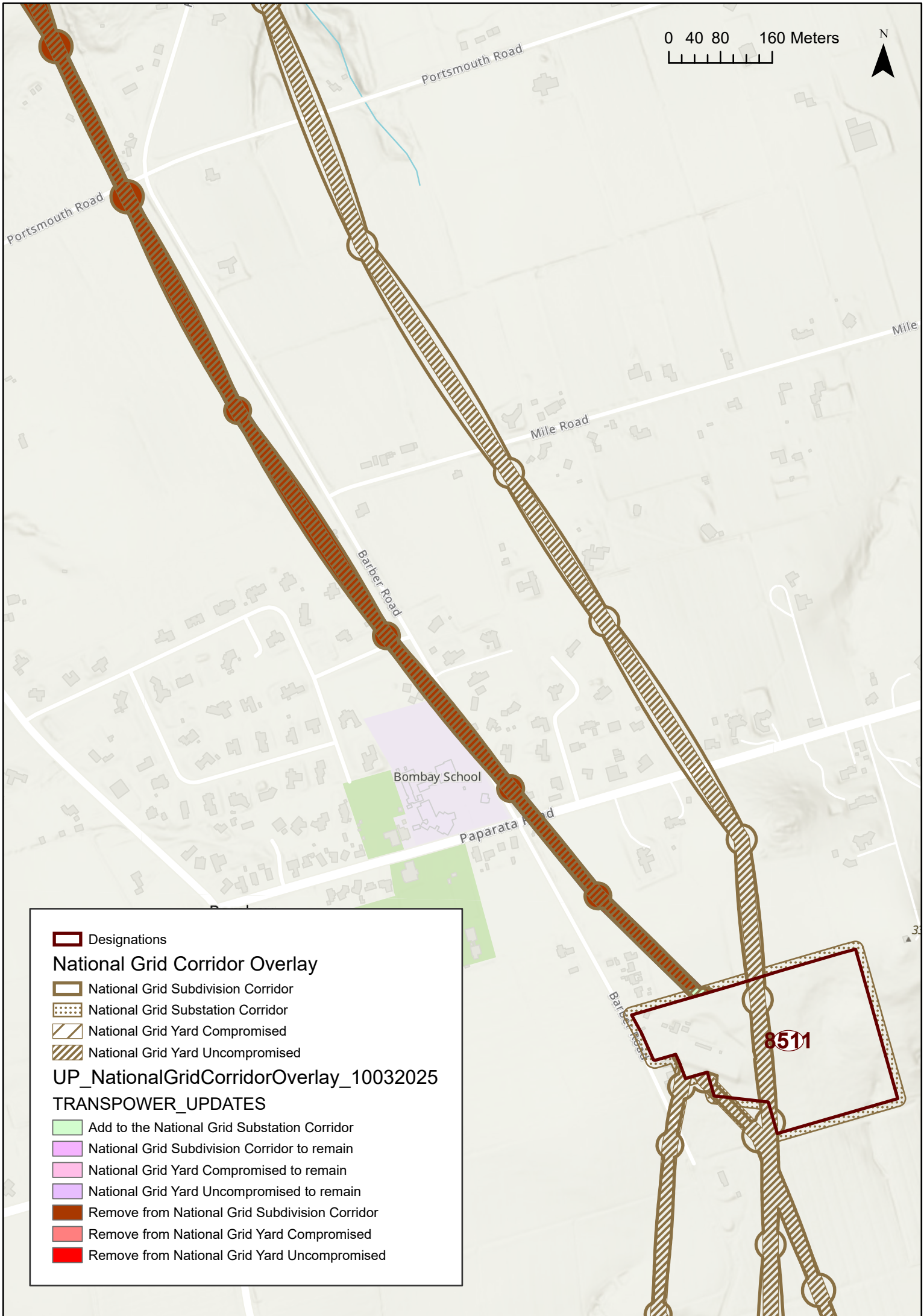
National Grid Yard Compromised to remain

National Grid Yard Uncompromised to remain

Remove from National Grid Subdivision Corridor

Remove from National Grid Yard Compromised

Remove from National Grid Yard Uncompromised



Designations

National Grid Corridor Overlay

National Grid Subdivision Corridor

National Grid Substation Corridor

National Grid Yard Compromised

National Grid Yard Uncompromised

UP_NationalGridCorridorOverlay_10032025

TRANSPOWER_UPDATES

Add to the National Grid Substation Corridor

National Grid Subdivision Corridor to remain

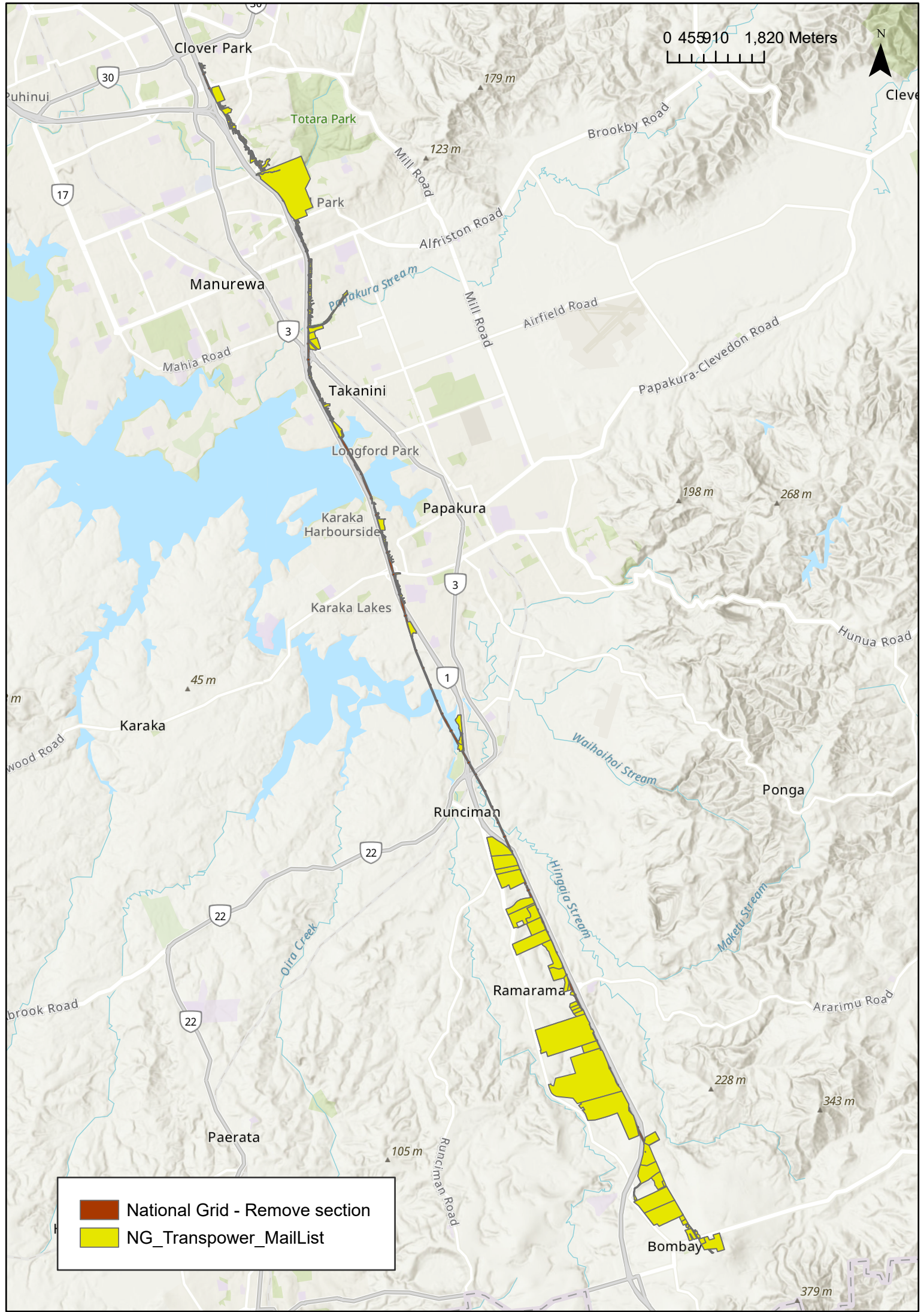
National Grid Yard Compromised to remain

National Grid Yard Uncompromised to remain

Remove from National Grid Subdivision Corridor

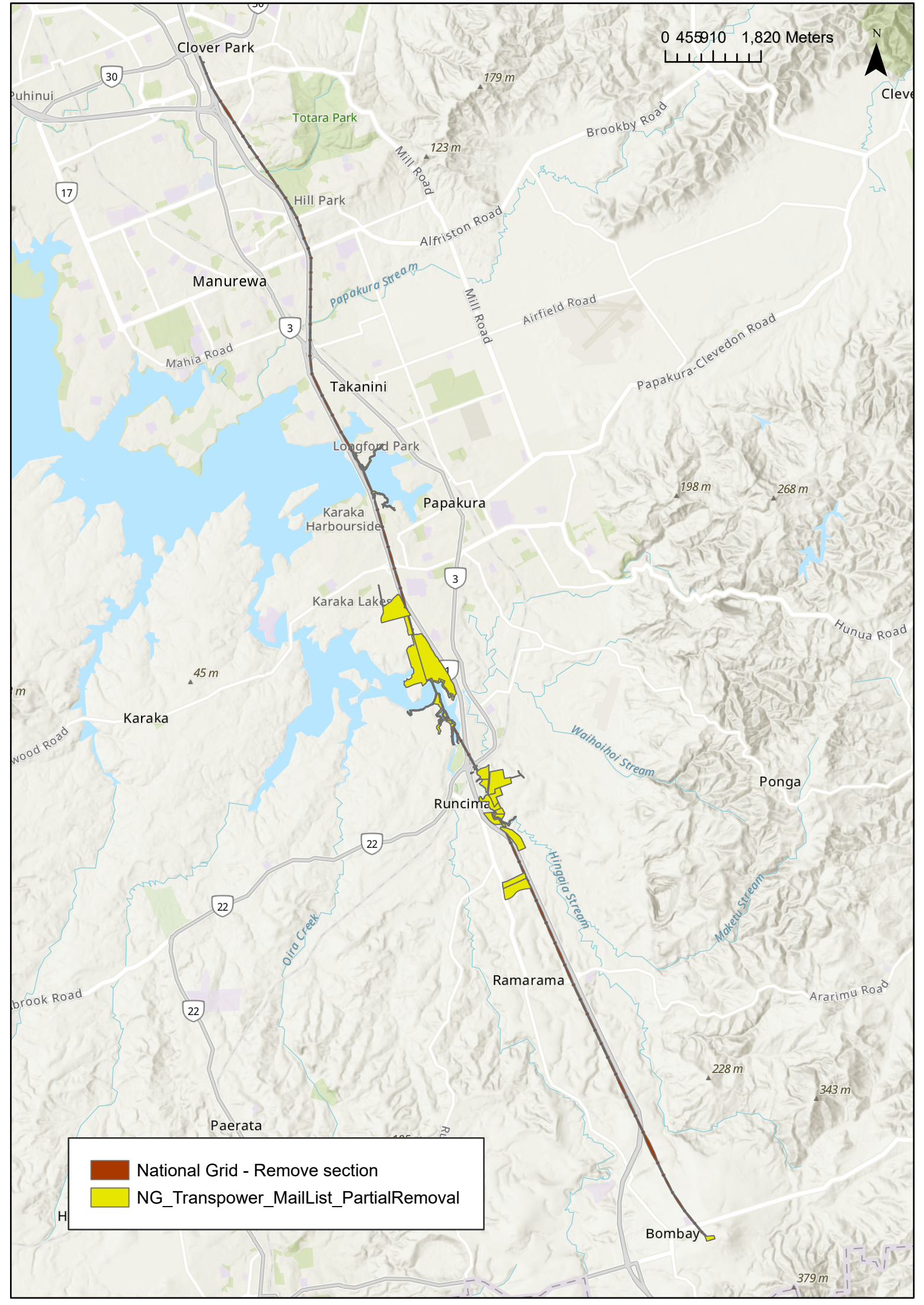
Remove from National Grid Yard Compromised

Remove from National Grid Yard Uncompromised





National Grid - Remove section

NG_Transpower_MailList



0 455 910 1,820 Meters



-  National Grid - Remove section
-  NG_Transpower_MailList_PartialRemoval

Attachment 3
Affected Properties

| Transpower National Grid Overlay - Properties Full Removal | | | |
|--|-------------------------|-------------------------|-------------------------|
| Property_Address | Property_Address | Property_Address | Property_Address |
| 4 Banyan Drive | 14 Gloaming Place | 15 Whitbourne Heights | 1/23 Solveig Place |
| 12 Keri Anne Place | 1/11 Solveig Place | 6 Botanic View | 1/45 Shifnal Drive |
| 2/32 Challen Close | 8 Whitbourne Heights | 1/17 Corolu Place | 2 Crail Court |
| 2/166 Everglade Drive | 39 Balgowan Terrace | 34 Balgowan Terrace | 28 Challen Close |
| 117 Shifnal Drive | 47 Kindergarten Drive | 12 Whitbourne Heights | 87 Shifnal Drive |
| 43 Balgowan Terrace | 2/79 Everglade Drive | 2/15 Shifnal Drive | 13 Whitbourne Heights |
| 3 Rangi Road | 98 Trimdon Street | 1/104 Everglade Drive | 16 Keri Anne Place |
| 2/52 Sikkim Crescent | 3 Leven Lane | 6 Whitbourne Heights | 171 Everglade Drive |
| 1/51 Shifnal Drive | 55R De Havilland Drive | 1/27 Kindergarten Drive | 1/25 Solveig Place |
| 49 Shifnal Drive | 175 Everglade Drive | 2/28 Balgowan Terrace | 170 Everglade Drive |
| 17 Index Place | 155 Everglade Drive | 17 Gloaming Place | 35 Morewa Place |
| 26 Balgowan Terrace | 6 Crail Court | 1/21 Gloaming Place | 2/21 Solveig Place |
| 2/50 Sikkim Crescent | 19 Whitbourne Heights | 13 Takatu Place | 1/2 Botanic View |
| 26 Challen Close | 4 Keri Anne Place | 16 Gloaming Place | 133 Everglade Drive |
| 19 Redoubt Road | 51 Trimdon Street | 153 Everglade Drive | 3 Goh Place |
| 2 Botanic View | 18 Keri Anne Place | 10 Goh Place | 2/97 Hill Road |
| 1/29 Kindergarten Drive | 95 Shifnal Drive | 39 Morewa Place | 2/33 Kindergarten Drive |
| 22 Keri Anne Place | 37 Index Place | 21 Corolu Place | 33 Index Place |
| 174 Everglade Drive | 2/18 Corolu Place | 92 Everglade Drive | 16A Corolu Place |
| 17 Shifnal Drive | 2/27 Kindergarten Drive | 5/25 Solveig Place | 167 Everglade Drive |
| 1/13 Shifnal Drive | 137 Everglade Drive | 10 Whitbourne Heights | 90 Everglade Drive |
| 30 Balgowan Terrace | 145 Everglade Drive | 4 Cunningham Place | 2/29 Kindergarten Drive |
| 1/33 Kindergarten Drive | 104B Everglade Drive | 36 Fairchild Avenue | 9 Whitbourne Heights |
| 83 Shifnal Drive | 65 Shifnal Drive | 44 Sikkim Crescent | 160 Everglade Drive |
| 59 Shifnal Drive | 36 Challen Close | 2/31 Shifnal Drive | 2/21 Gloaming Place |
| 36R Fairchild Avenue | 2/43 Shifnal Drive | 41 Balgowan Terrace | 1/19 Kindergarten Drive |
| 81 Shifnal Drive | 35 Index Place | 88 Everglade Drive | 1/20 Corolu Place |
| 1/19 Solveig Place | 19 Shifnal Drive | 14R Eugenia Rise | 1/28 Balgowan Terrace |
| 71 Shifnal Drive | 149 Everglade Drive | 24 Keri Anne Place | 75 Shifnal Drive |
| 106 Everglade Drive | 1/33 Shifnal Drive | 14 Botanic View | 57 Shifnal Drive |
| 6 Arden Court | 169 Everglade Drive | 37 Balgowan Terrace | 29 Shifnal Drive |
| 2/45 Shifnal Drive | 8 Botanic View | 26R Keri Anne Place | 161 Everglade Drive |
| 79 Shifnal Drive | 8 Keri Anne Place | 11 Takatu Place | 43 Kindergarten Drive |
| 35 Kindergarten Drive | 115 Shifnal Drive | 1/11 Eugenia Rise | 11 Whitbourne Heights |
| 147 Everglade Drive | 36 Balgowan Terrace | 3 Banyan Drive | 105 Shifnal Drive |
| 1/50 Sikkim Crescent | 19 Index Place | 34 Challen Close | 96 Everglade Drive |
| 2/13 Solveig Place | 4 Goh Place | 1 Rangi Road | 16 Corolu Place |
| 2/25 Solveig Place | 1/52 Sikkim Crescent | 2/13 Shifnal Drive | 16 Spartan Road |
| 25 Index Place | 87 Everglade Drive | 14 Mediterranean Way | 5 Goh Place |
| 34 Keri Anne Place | 61 Shifnal Drive | 45 Kindergarten Drive | 11Z Takatu Place |
| 121 Everglade Drive | 102 Hill Road | 1/15 Shifnal Drive | 67 Shifnal Drive |
| 135 Everglade Drive | 1/17 Kindergarten Drive | 39 Index Place | 15 Index Place |
| 12 Mediterranean Way | 2 Rangi Road | 4 Whitbourne Heights | 2/11 Solveig Place |
| 2/28 Challen Close | 163 Everglade Drive | 25 Shifnal Drive | 16 Goh Place |
| 2/20 Corolu Place | 76 Everglade Drive | 63 Shifnal Drive | 1/13 Solveig Place |
| 96 Trimdon Street | 165B Everglade Drive | 1/21 Solveig Place | 29 Index Place |
| 1/30 Challen Close | 22 Fairchild Avenue | 6 Goh Place | 6/25 Solveig Place |

| Property_Address | Property_Address | Property_Address | Property_Address |
|-------------------------------|-------------------------|-------------------------------------|------------------------|
| 12 Botanic View | 8 Mediterranean Way | 15 Takatu Place | 408R Porchester Road |
| 1/97 Hill Road | 38 Challen Close | 66R Calluna Crescent | 1/34 Barnhill Crescent |
| 7 Goh Place | 51 Kindergarten Drive | 5 Banyan Drive | 79 Rushgreen Avenue |
| 98 Everglade Drive | 18 Goh Place | 35 Solveig Place | 63R Chichester Drive |
| 9R Kindergarten Drive | 115 Everglade Drive | 97 Shifnal Drive | 97 Rushgreen Avenue |
| 49 Kindergarten Drive | 94 Everglade Drive | 35 Balgowan Terrace | 32 Barnhill Crescent |
| ESPLND RES 4 Cunningham Place | 10 Mediterranean Way | 77 Shifnal Drive | 5 Dumas Place |
| 20 Goh Place | 28 Keri Anne Place | 10 Keri Anne Place | 24 Barnhill Crescent |
| 75 Everglade Drive | 35 Fairchild Avenue | 24 Fairchild Avenue | 59R Chichester Drive |
| 12 Gloaming Place | 18 Whitbourne Heights | 42 Fairchild Avenue | 31 Bremner Road |
| 14 Keri Anne Place | 81 Everglade Drive | 37 Morewa Place | 58 Lakeside Drive |
| 32 Botanic View | 19 Corolu Place | 1/79 Everglade Drive | 42 Barnhill Crescent |
| 23 Index Place | 2/17 Kindergarten Drive | 37 Kindergarten Drive | 58R Lakeside Drive |
| 41 Solveig Place | 31 Morewa Place | 3/25 Solveig Place | 57 Chichester Drive |
| 8 Crail Court | 162 Everglade Drive | 10 Crail Court | 2/34 Barnhill Crescent |
| 21 Index Place | 2/23 Solveig Place | 165A Everglade Drive | 51 Chichester Drive |
| 1/53 Trimdon Street | 22 Challen Close | 100 Everglade Drive | 36 Barnhill Crescent |
| 86 Everglade Drive | 151 Everglade Drive | 17 Whitbourne Heights | 48 Lakeside Drive |
| 143 Everglade Drive | 1/31 Shifnal Drive | 2/30 Challen Close | 27 Bremner Road |
| 6-18 Rangī Road | 40 Challen Close | 47 Shifnal Drive | 64R Rushgreen Avenue |
| 139 Everglade Drive | 32 Balgowan Terrace | 108 Everglade Drive | 33 Bremner Road |
| 9 Eugenia Rise | 3/97 Hill Road | 39 Kindergarten Drive | 115 Park Estate Road |
| 28 Fairchild Avenue | 1/7 Kirklow Place | 2/19 Kindergarten Drive | 13 Bexley Place |
| 157 Everglade Drive | 165C Everglade Drive | 83 Everglade Drive | 38 Barnhill Crescent |
| 41 Kindergarten Drive | 38 Fairchild Avenue | 2/51 Shifnal Drive | 40 Barnhill Crescent |
| 141 Everglade Drive | 29 Morewa Place | 80 Everglade Drive | 54 Lakeside Drive |
| 91 Shifnal Drive | 34 Sikkim Crescent | 2/24 Challen Close | 77 Chichester Drive |
| 6 Keri Anne Place | 21 Kindergarten Drive | 2-14 Spartan Road | 118 Beach Road |
| 30 Botanic View | 2/53 Trimdon Street | 8 Goh Place | 7 Dumas Place |
| 21 Whitbourne Heights | 1/18 Corolu Place | 20 Keri Anne Place | 55 Chichester Drive |
| 30 Keri Anne Place | 1/31 Kindergarten Drive | 16 Whitbourne Heights | 64 Rushgreen Avenue |
| 32 Keri Anne Place | 1 Banyan Drive | 21 Shifnal Drive | 56 Lakeside Drive |
| 2/31 Kindergarten Drive | 1/24 Challen Close | 102 Everglade Drive | 30 Barnhill Crescent |
| 15 Solveig Place | 16 Botanic View | 28 Botanic View | 77 Rushgreen Avenue |
| 33 Morewa Place | 39 Shifnal Drive | 36 Keri Anne Place | 81A Chichester Drive |
| 4 Botanic View | 14 Goh Place | 165D Everglade Drive | 2 Dumas Place |
| 119 Everglade Drive | 2 Banyan Drive | ESPLND RES 200 Takanini School Road | 79 Chichester Drive |
| 2/33 Shifnal Drive | 19 Gloaming Place | 37 Solveig Place | 62 Rushgreen Avenue |
| 117 Everglade Drive | 103 Shifnal Drive | 100A Everglade Drive | 46 Barnhill Crescent |
| 15A Solveig Place | 17 Takatu Place | 3 Dumas Place | 9 Dumas Place |
| 26A Challen Close | 2 Whitbourne Heights | 11 Dumas Place | 49 Chichester Drive |
| 35 Shifnal Drive | 2 Goh Place | 52 Lakeside Drive | 71A Chichester Drive |
| 40 Fairchild Avenue | 2/17 Corolu Place | 5 Bexley Place | 1121 Great South Road |
| 49 Trimdon Street | 3 Crail Court | 33 Barnhill Crescent | 1159 Great South Road |
| 4/25 Solveig Place | 1/32 Challen Close | 69 Chichester Drive | 1187A Great South Road |
| 78 Everglade Drive | 16R Crail Court | 53 Chichester Drive | 1257 Great South Road |
| 85 Everglade Drive | 12 Goh Place | 7 Bexley Place | 61 Flay Road |
| 33 Balgowan Terrace | 1/43 Shifnal Drive | 71 Chichester Drive | 34 Maher Road |

| Property_Address |
|------------------------|
| 9 Portsmouth Road |
| 44 Barnhill Crescent |
| 2/19 Solveig Place |
| 31 Index Place |
| 125 Barber Road |
| 80 Barber Road |
| 1329 Great South Road |
| 47 Flay Road |
| 90 Barber Road |
| 57 Portsmouth Road |
| 103 Barber Road |
| 35 Paparata Road |
| 105 Barber Road |
| 53 Paparata Road |
| 62 Barber Road |
| 1279B Great South Road |
| 17 Maher Road |
| 1489 Great South Road |
| 67 Portsmouth Road |
| 1279A Great South Road |
| 4 Sellars Road |
| 72 Barber Road |
| 1245 Great South Road |
| 352 Hillview Road |
| 60 Paparata Road |
| 97 Bombay Road |
| 1533 Great South Road |
| 44 Maher Road |

| Transpower National Grid Overlay - Properties Partial Removal | |
|---|-----------------------|
| Property_Address | Property_Address |
| 45 Morewa Place | 105 Brookfield Road |
| ESPLND RES 83 Longford Park Drive | 110 Brookfield Road |
| 43 Morewa Place | 1207 S Hway Highway |
| 68 Rushgreen Avenue | 25 Tegal Road |
| ESPLND RES 4 Westholm Way | 1233 Great South Road |
| 15 Morewa Place | 1207 S Hway Highway |
| 7 Takatu Place | 151 Barber Road |
| 47 Morewa Place | |
| 44 Morewa Place | |
| 49 Morewa Place | |
| 25 Morewa Place | |
| 8 Arden Court | |
| 70 Rushgreen Avenue | |
| 21 Morewa Place | |
| Railway Network | |
| 13 Morewa Place | |
| ESPLND RES 83 Longford Park Drive | |
| 27 Morewa Place | |
| 19 Takatu Place | |
| 9 Takatu Place | |
| 23 Morewa Place | |
| 41 Morewa Place | |
| 19 Morewa Place | |
| 66 Rushgreen Avenue | |
| 17 Morewa Place | |
| 32R Sikkim Crescent | |
| 132 Flanagan Road | |
| 141 Park Estate Road | |
| 197 Better Way | |
| ESPLND RES 109 Bremner Road | |
| 10 Karaka Road | |
| 128 Flanagan Road | |
| 124 Flanagan Road | |
| 120 Flanagan Road | |
| 127 Ahunga Road | |
| 85 Kahui Parade | |
| 219 Bremner Road | |
| 108 Flanagan Road | |
| 97 Kahui Parade | |
| 152A Park Estate Road | |
| ESPLND RES 140 Park Estate Road | |
| ESPLND RES 51 Bremner Road | |
| 144 Park Estate Road | |
| 72 Hinau Road | |
| 195 Quarry Road | |
| 128 Flanagan Road | |
| 124 Flanagan Road | |
| ESPLND RES 100 Brookfield Road | |