



This map/plan is illustrative only and all information should be independently verified on site before taking any action. Copyright Auckland Council. Boundary information from LINZ (Crown Copyright Reserved). Whilst due care has been taken, Auckland Council gives no warranty as to the accuracy and completeness of any information on this map/plan and accepts no liability for any error, omission or use of the information. Height datum: Auckland 1948.

Created: Wednesday, 10 October 2012, 4:54:19 p.m.

(Rings Redoubt)
Papakura 700

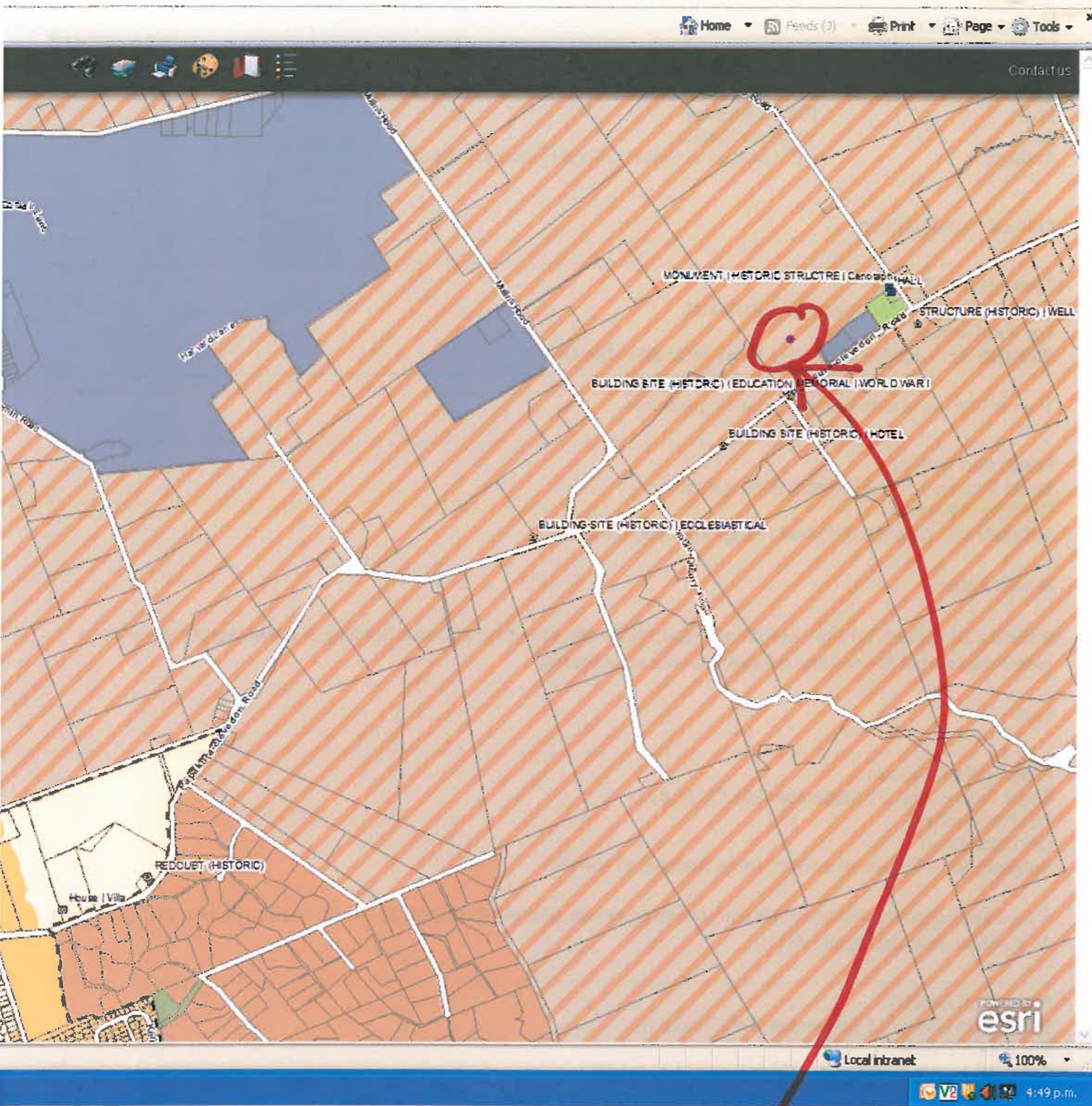
UID 700
Map extent
and centroid

Map no. 1

Scale @ A3 1:1000



(Include the above extent of place and remove existing centroid point) (see map no. 2)



Remove this dot (UID 700)
In wrong location

Map no.2.