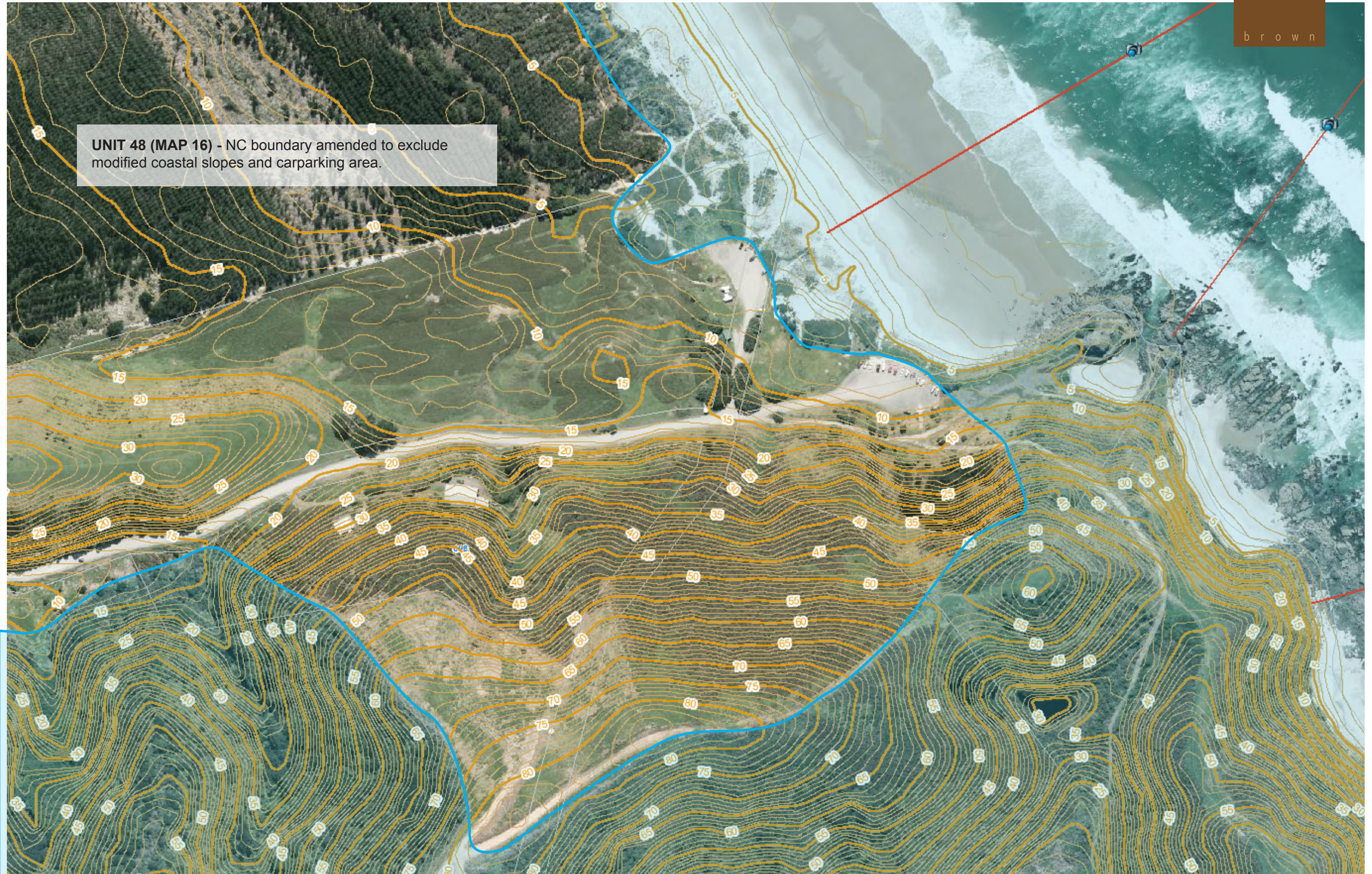


UNIT 48 (MAP 16) - NC boundary amended to exclude modified coastal slopes and carparking area.



TE ARAI POINT (PART 1)
BOUNDARY ADJUSTMENTS



UNIT 48 (MAP 16) - NC boundary amended to exclude modified coastal slopes and carparking area.

TE ARAI POINT (PART 2)

BOUNDARY ADJUSTMENTS

UNIT 48 (MAP 17) - NC boundary amended to follow combination of coastal ridge, edge of remnant dune formation, and bushline - excludes sequence of modification along Rahukiri Road including recent forestry plantings

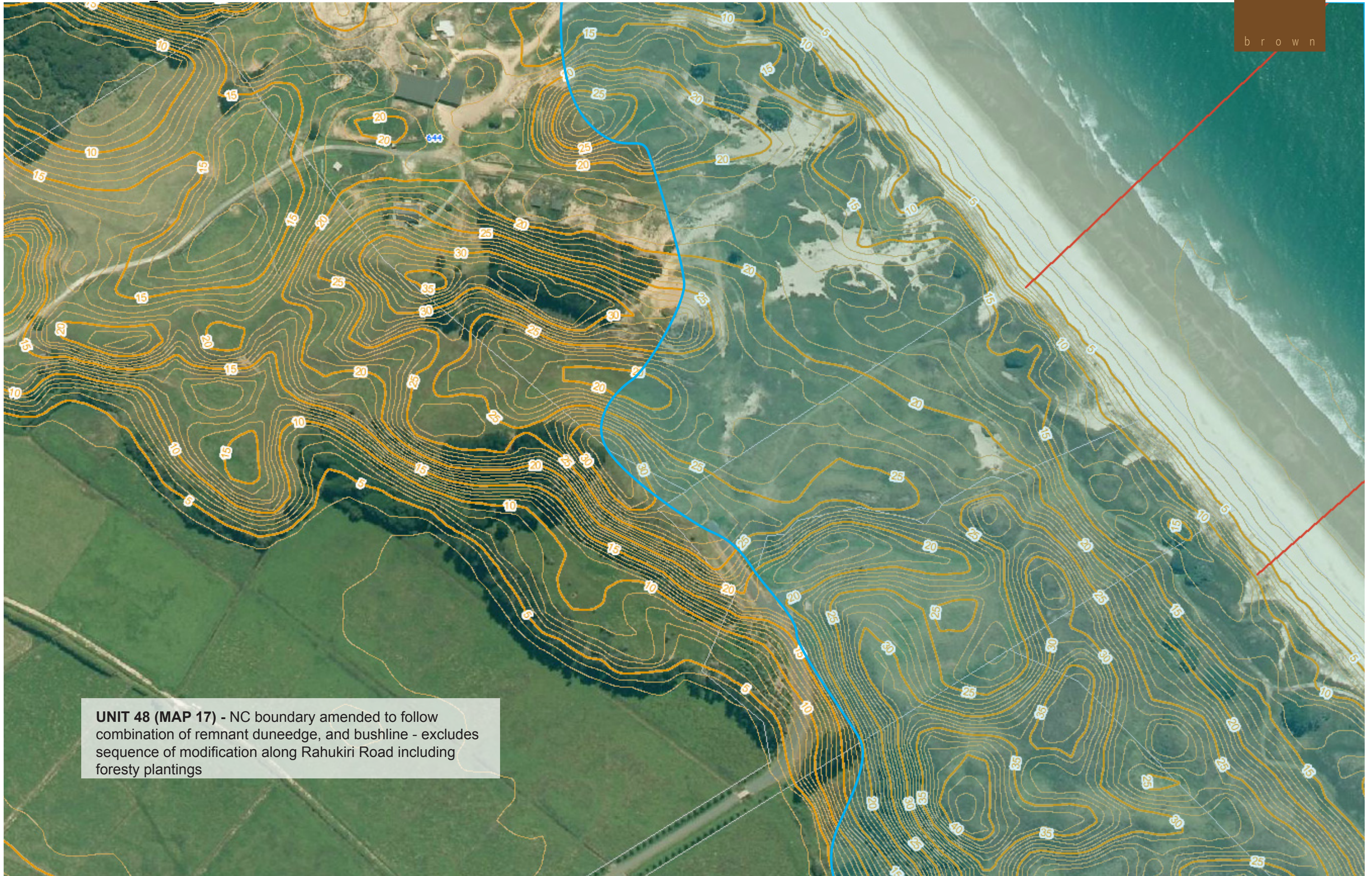
Pakiri Block
Stewardship Area



RAHUKIRI ROAD (PART 1)

BOUNDARY ADJUSTMENTS

NATURAL CHARACTER ASSESSMENT - AUCKLAND REGION | JANUARY 2014



UNIT 48 (MAP 17) - NC boundary amended to follow combination of remnant duneedge, and bushline - excludes sequence of modification along Rahukiri Road including foresty plantings

RAHUKIRI ROAD (PART 2)

BOUNDARY ADJUSTMENTS

NATURAL CHARACTER ASSESSMENT - AUCKLAND REGION | JANUARY 2014



UNIT 48 (MAP 17) - NC boundary amended to follow combination of coastal ridge, edge of remnant dune formation, and bushline - excludes sequence of modification along Rahukiri Road including recent forestry plantings

RAHUKIRI ROAD (PART 3)

BOUNDARY ADJUSTMENTS

UNIT 48

UNIT 48 (MAP 17) - NC boundary amended to follow combination of coastal ridge, edge of remnant dune formation, and bushline - excludes sequence of modification along Rahukiri Road including recent forestry plantings

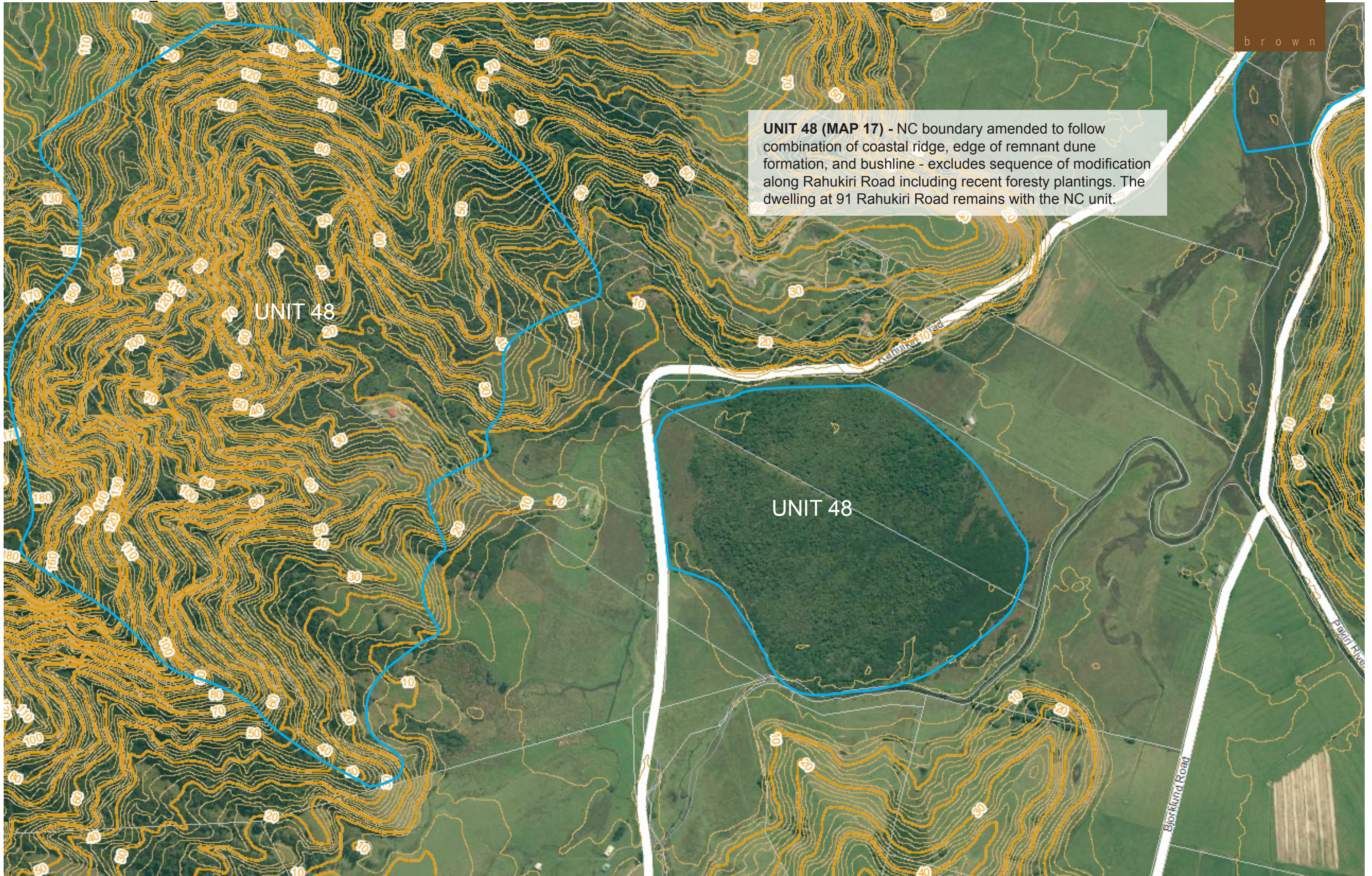
UNIT 48

UNIT 48

RAHUKIRI ROAD (PART 4)

BOUNDARY ADJUSTMENTS

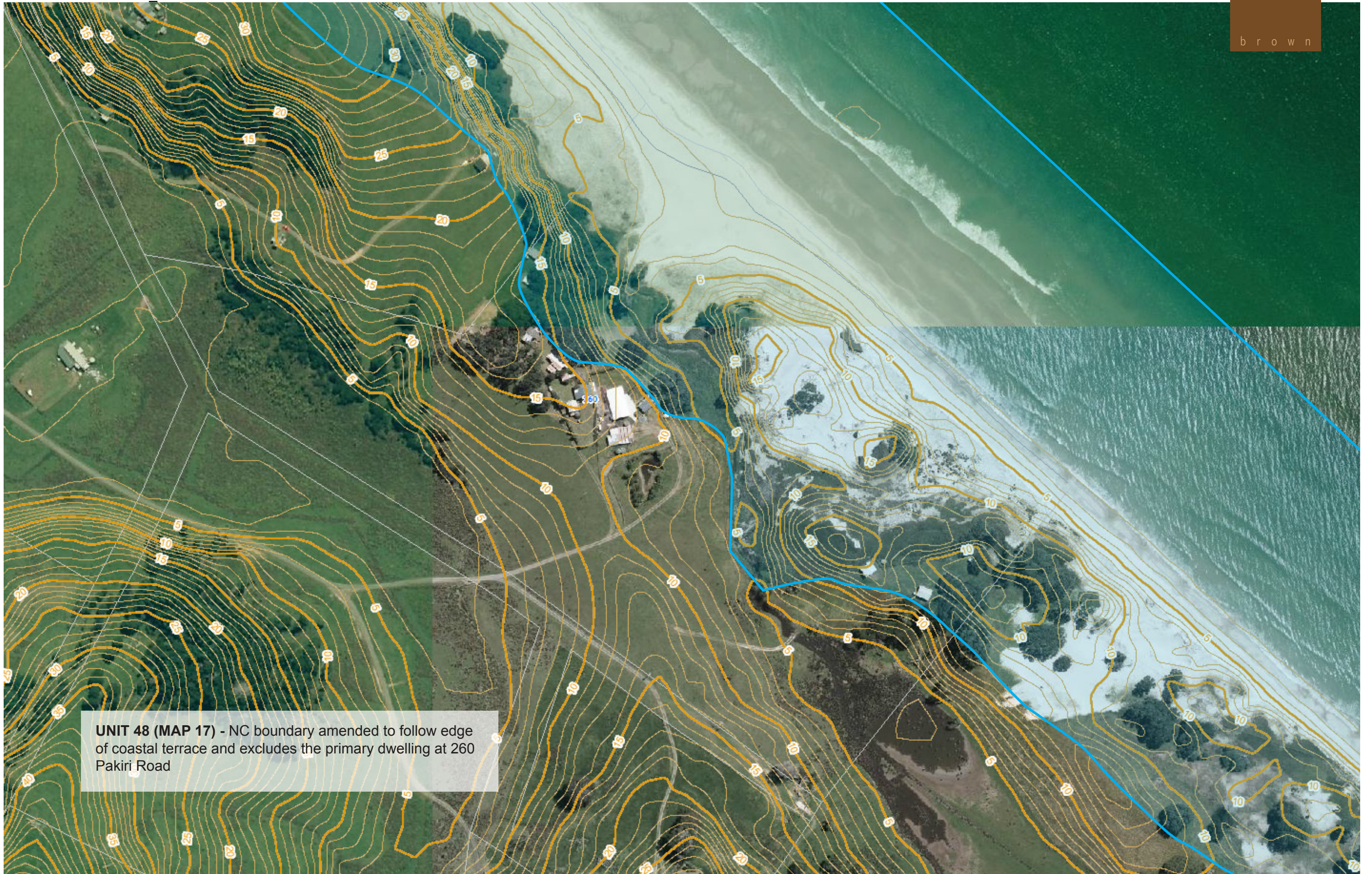
NATURAL CHARACTER ASSESSMENT - AUCKLAND REGION | JANUARY 2014



UNIT 48 (MAP 17) - NC boundary amended to follow combination of coastal ridge, edge of remnant dune formation, and bushline - excludes sequence of modification along Rahukiri Road including recent forestry plantings. The dwelling at 91 Rahukiri Road remains with the NC unit.

RAHUKIRI ROAD (PART 5)

BOUNDARY ADJUSTMENTS



UNIT 48 (MAP 17) - NC boundary amended to follow edge of coastal terrace and excludes the primary dwelling at 260 Pakiri Road

260 PAKIRI RIVER ROAD

BOUNDARY ADJUSTMENTS

NATURAL CHARACTER ASSESSMENT - AUCKLAND REGION | JANUARY 2014