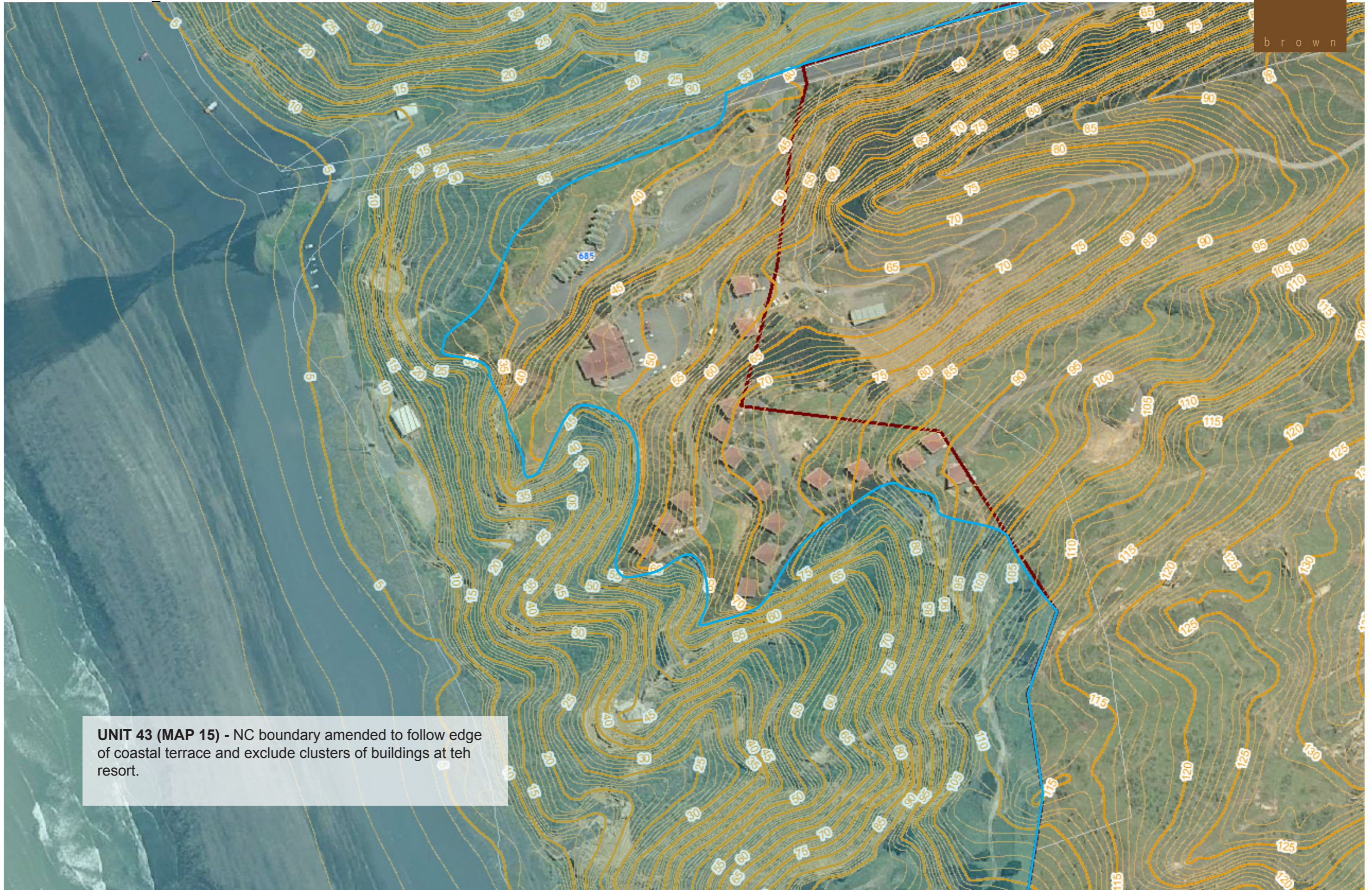


**UNIT 146 (MAP 28)** - NC boundary amended to follow edge of coastal slopes / ridges - excludes the dwellings at 165 Kawakawa Bay Coast Road, modified gullies, and forestry.

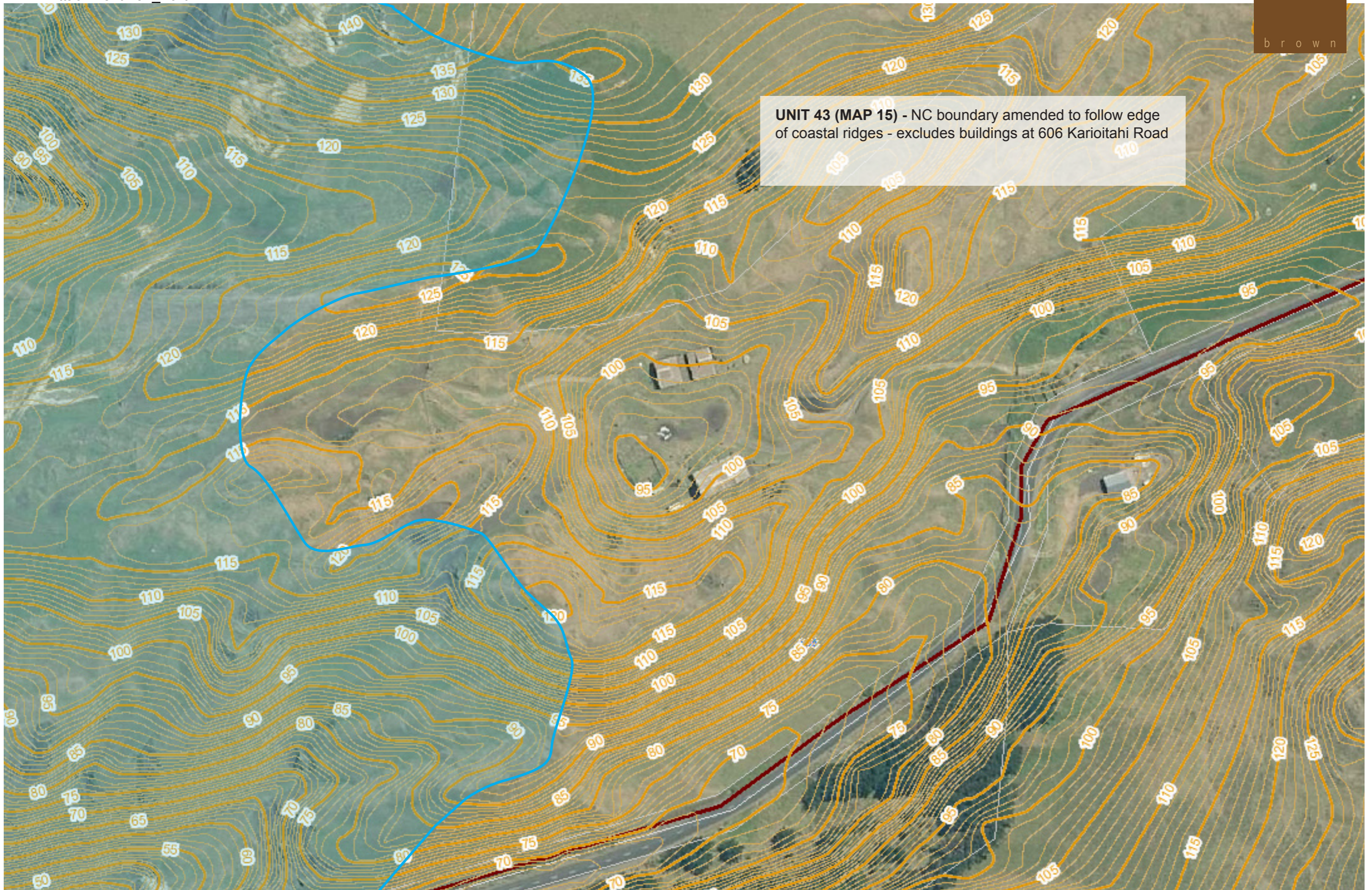
## 165 KAWAKAWA BAY COAST ROAD (PART 2)

BOUNDARY ADJUSTMENTS

NATURAL CHARACTER ASSESSMENT - AUCKLAND REGION | JANUARY 2014



**UNIT 43 (MAP 15)** - NC boundary amended to follow edge of coastal terrace and exclude clusters of buildings at teh resort.



## 606 KARIOITAHU ROAD

BOUNDARY ADJUSTMENTS

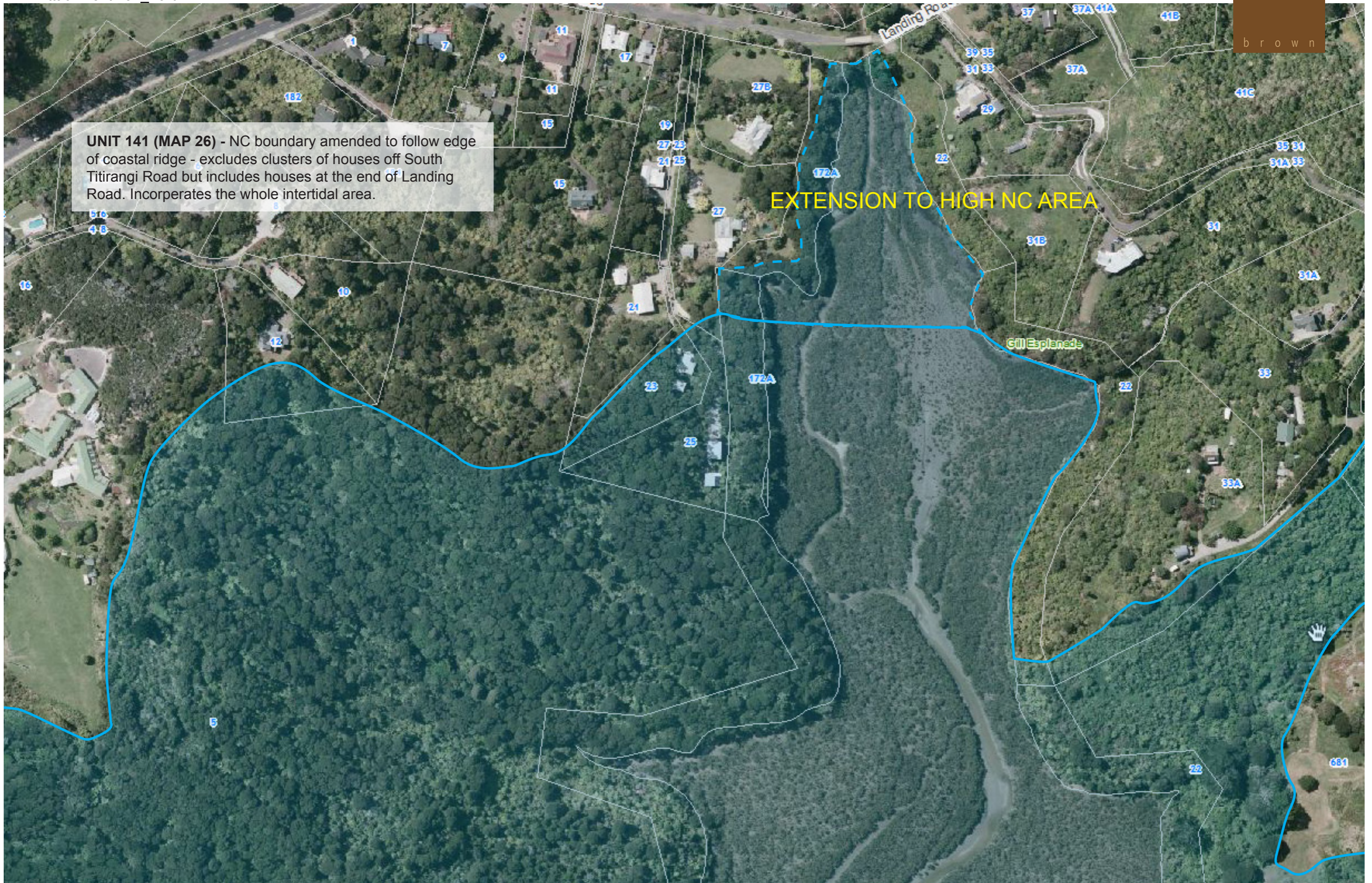
NATURAL CHARACTER ASSESSMENT - AUCKLAND REGION | JANUARY 2014



### SOUTH TITIRANGI ROAD (PART 1)

BOUNDARY ADJUSTMENTS

NATURAL CHARACTER ASSESSMENT - AUCKLAND REGION | JANUARY 2014



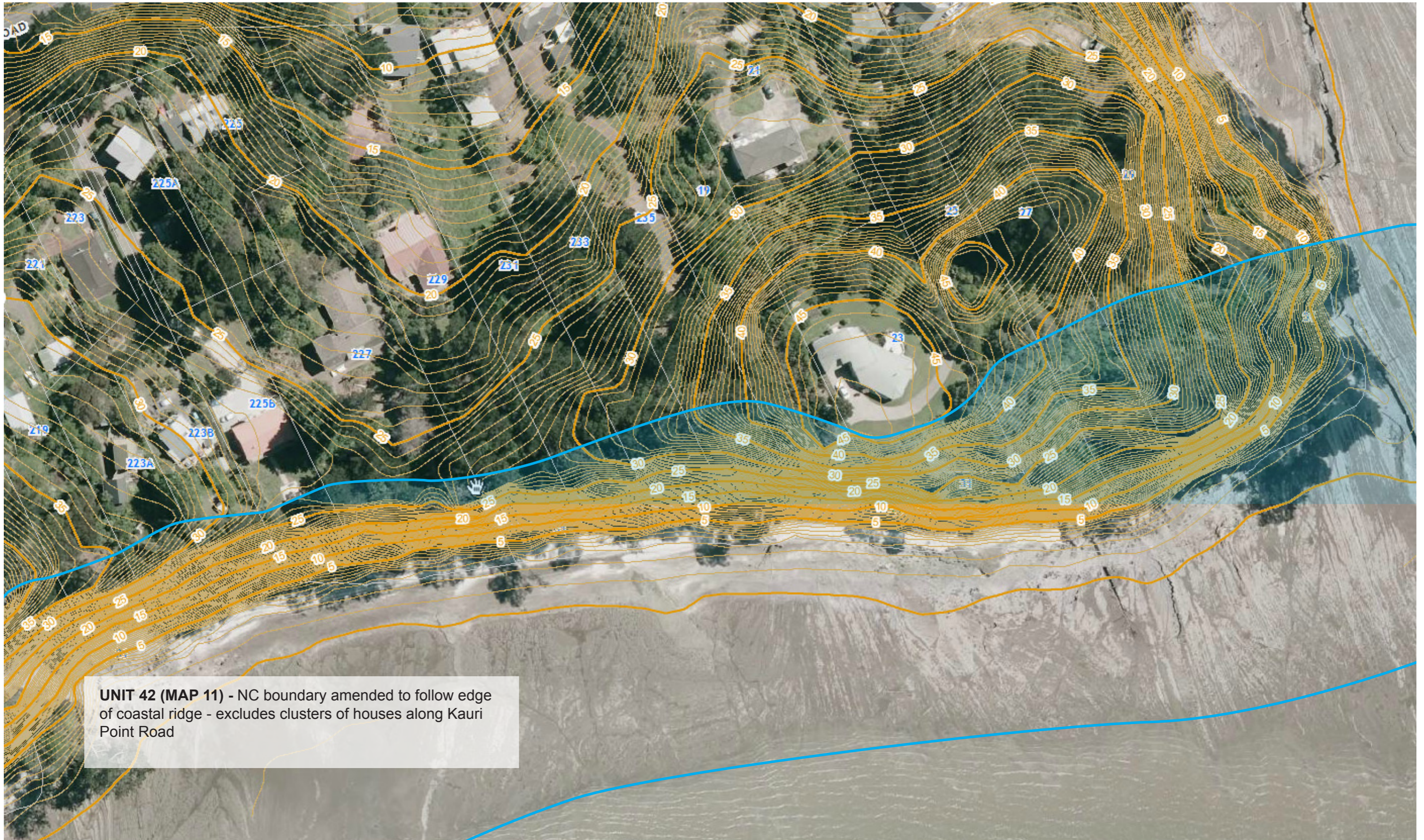
**UNIT 141 (MAP 26)** - NC boundary amended to follow edge of coastal ridge - excludes clusters of houses off South Titirangi Road but includes houses at the end of Landing Road. Incorporates the whole intertidal area.

**EXTENSION TO HIGH NC AREA**

## SOUTH TITIRANGI ROAD (PART 2)

BOUNDARY ADJUSTMENTS

NATURAL CHARACTER ASSESSMENT - AUCKLAND REGION | JANUARY 2014

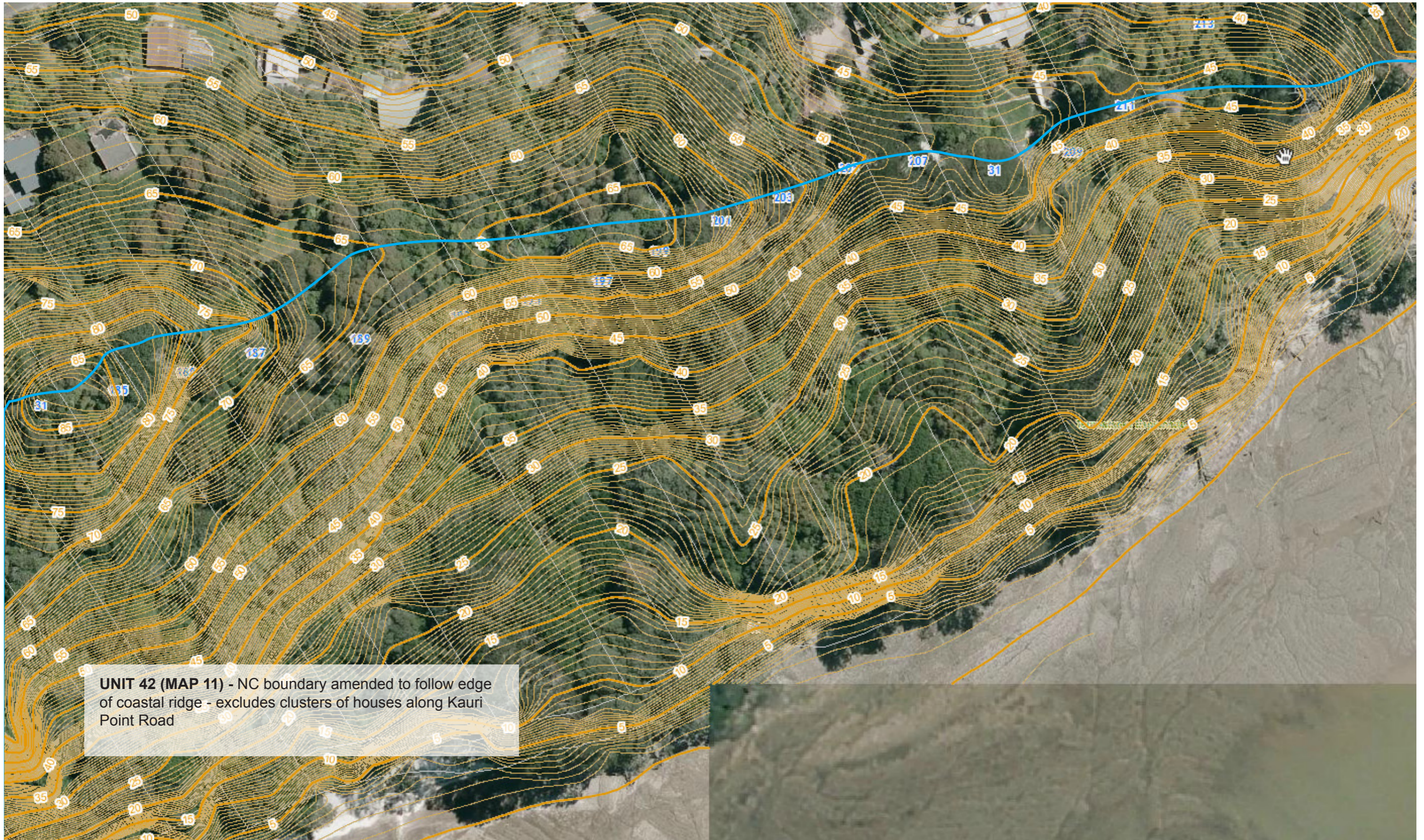


**UNIT 42 (MAP 11) - NC boundary amended to follow edge of coastal ridge - excludes clusters of houses along Kauri Point Road**

# KAURI POINT ROAD (PART 1)

BOUNDARY ADJUSTMENTS

NATURAL CHARACTER ASSESSMENT - AUCKLAND REGION | JANUARY 2014





**UNIT 42 (MAP 11)** - NC boundary amended to follow edge of coastal ridge/slope - excludes clusters of houses along Kauri Point Road

### KAURI POINT ROAD (PART 3)

BOUNDARY ADJUSTMENTS

NATURAL CHARACTER ASSESSMENT - AUCKLAND REGION | JANUARY 2014