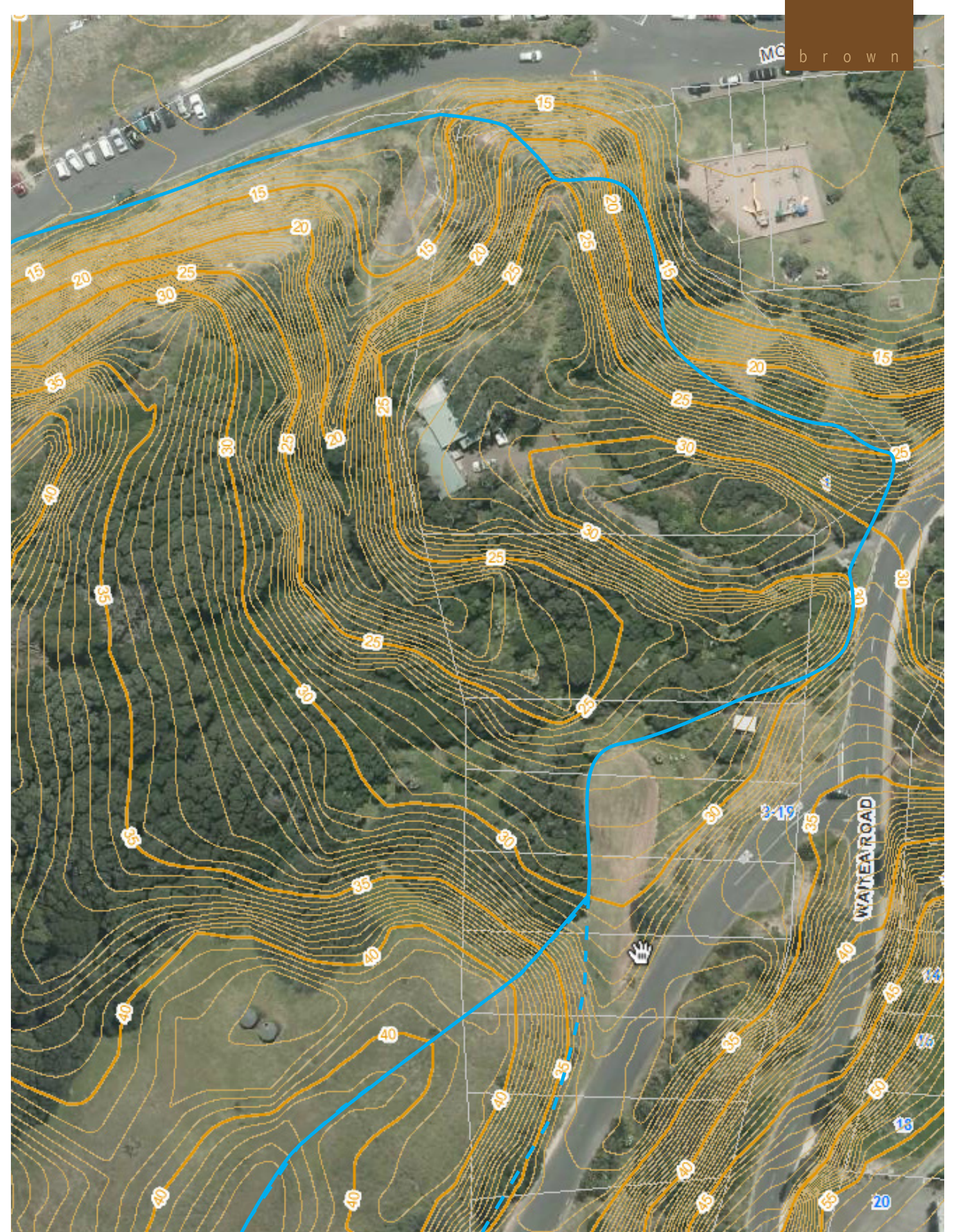
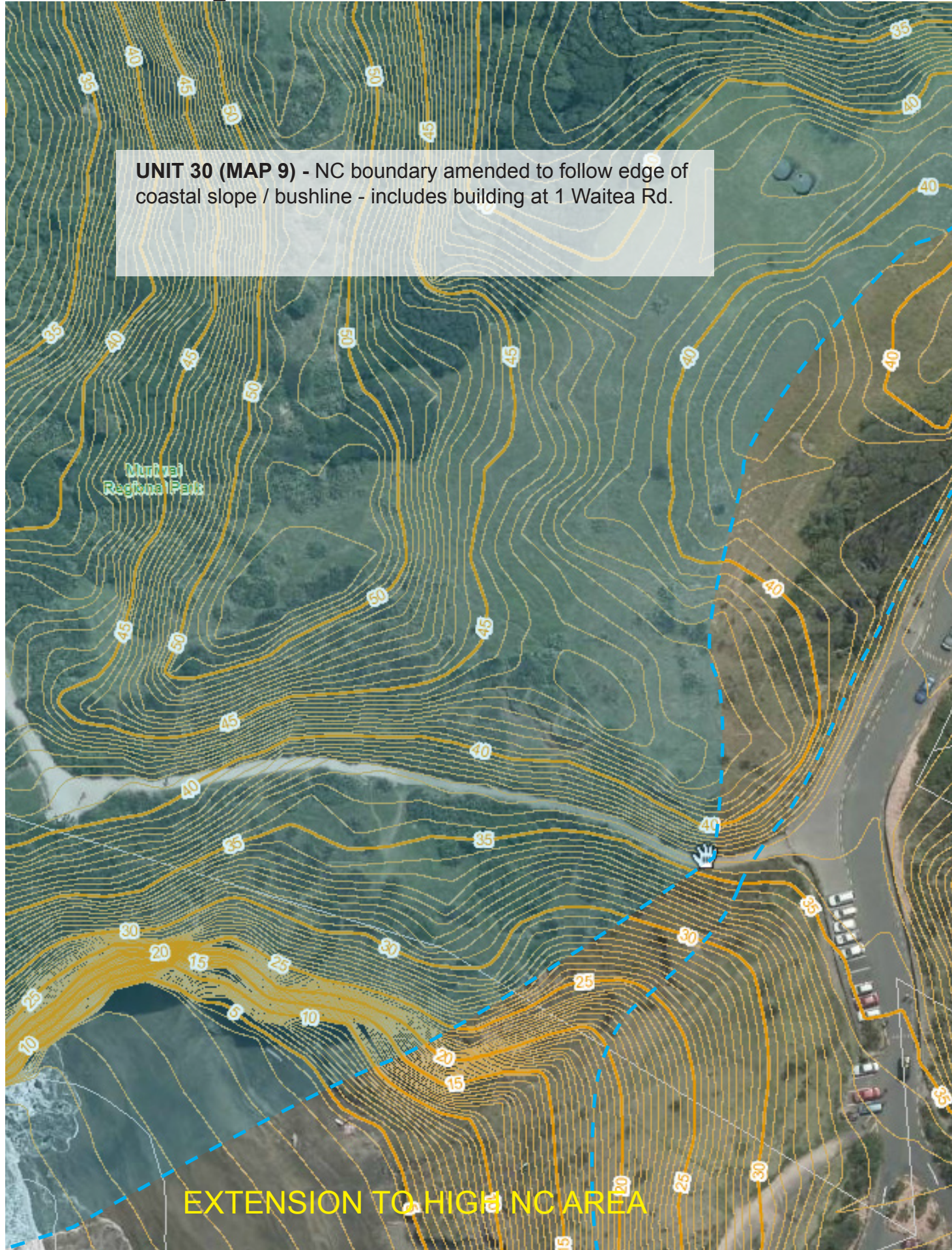


UNIT 30 (MAP 9) - NC boundary amended to follow edge of coastal slope / bushline - includes building at 1 Waitea Rd.

Muriwai Regional Park

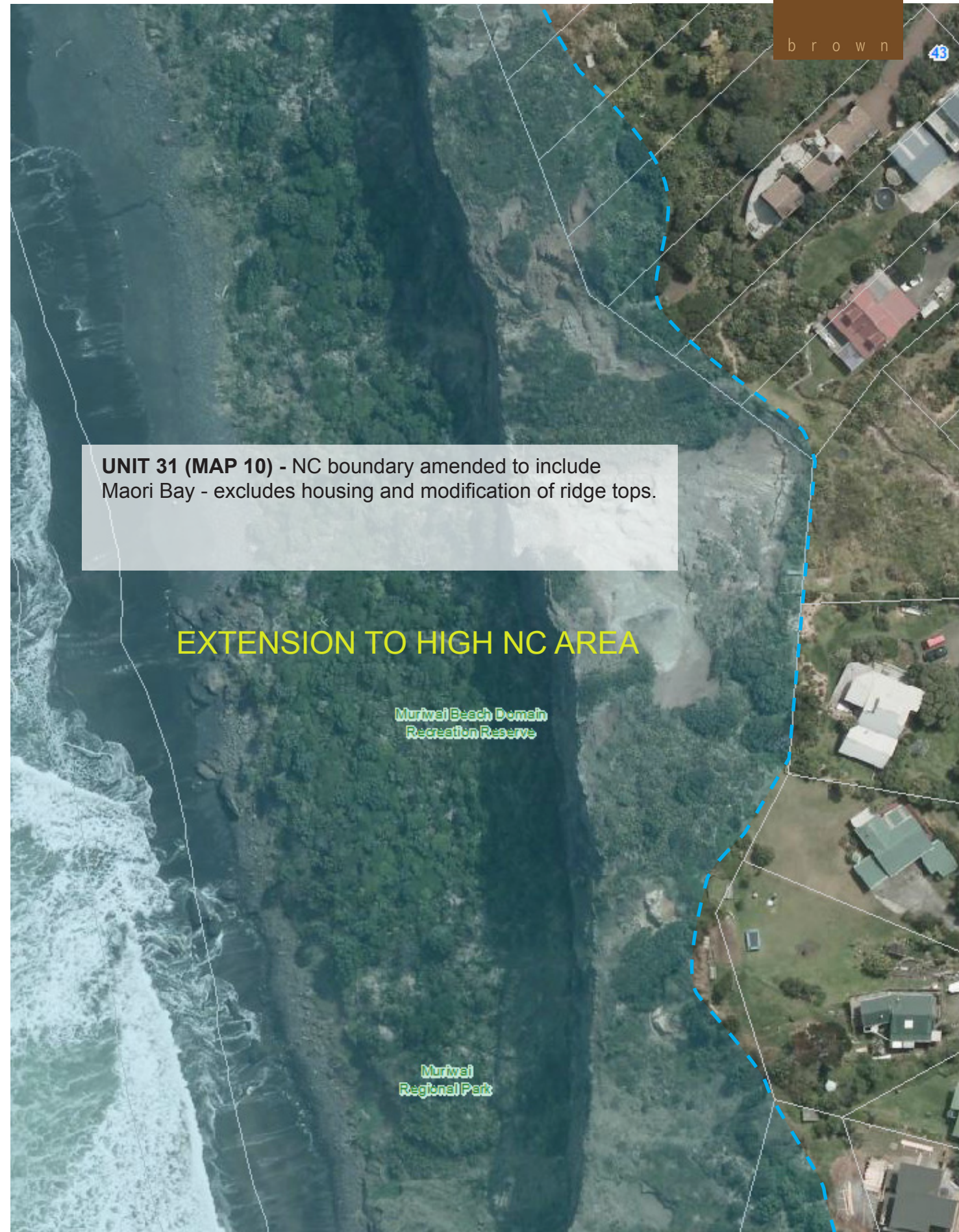
EXTENSION TO HIGH NC AREA



447 MOTUTARA ROAD (PART 1)

BOUNDARY ADJUSTMENTS

NATURAL CHARACTER ASSESSMENT - AUCKLAND REGION | JANUARY 2014



447 MOTUTARA ROAD (PART 2)

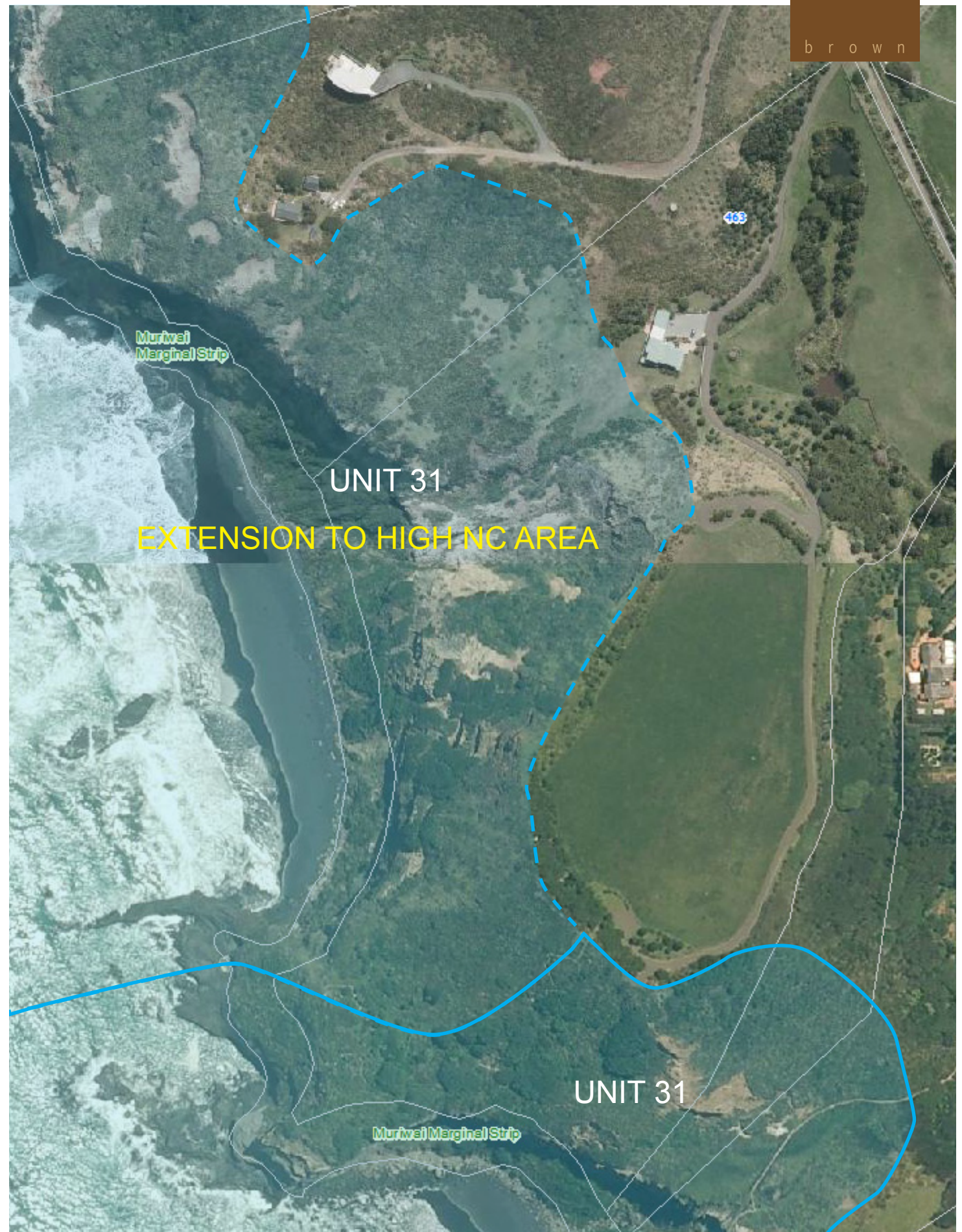
BOUNDARY ADJUSTMENTS

NATURAL CHARACTER ASSESSMENT - AUCKLAND REGION | JANUARY 2014



UNIT 31 (MAP 10) - NC boundary amended to include Maori Bay - excludes housing and modification of ridge tops.

UNIT 31
EXTENSION TO HIGH NC AREA



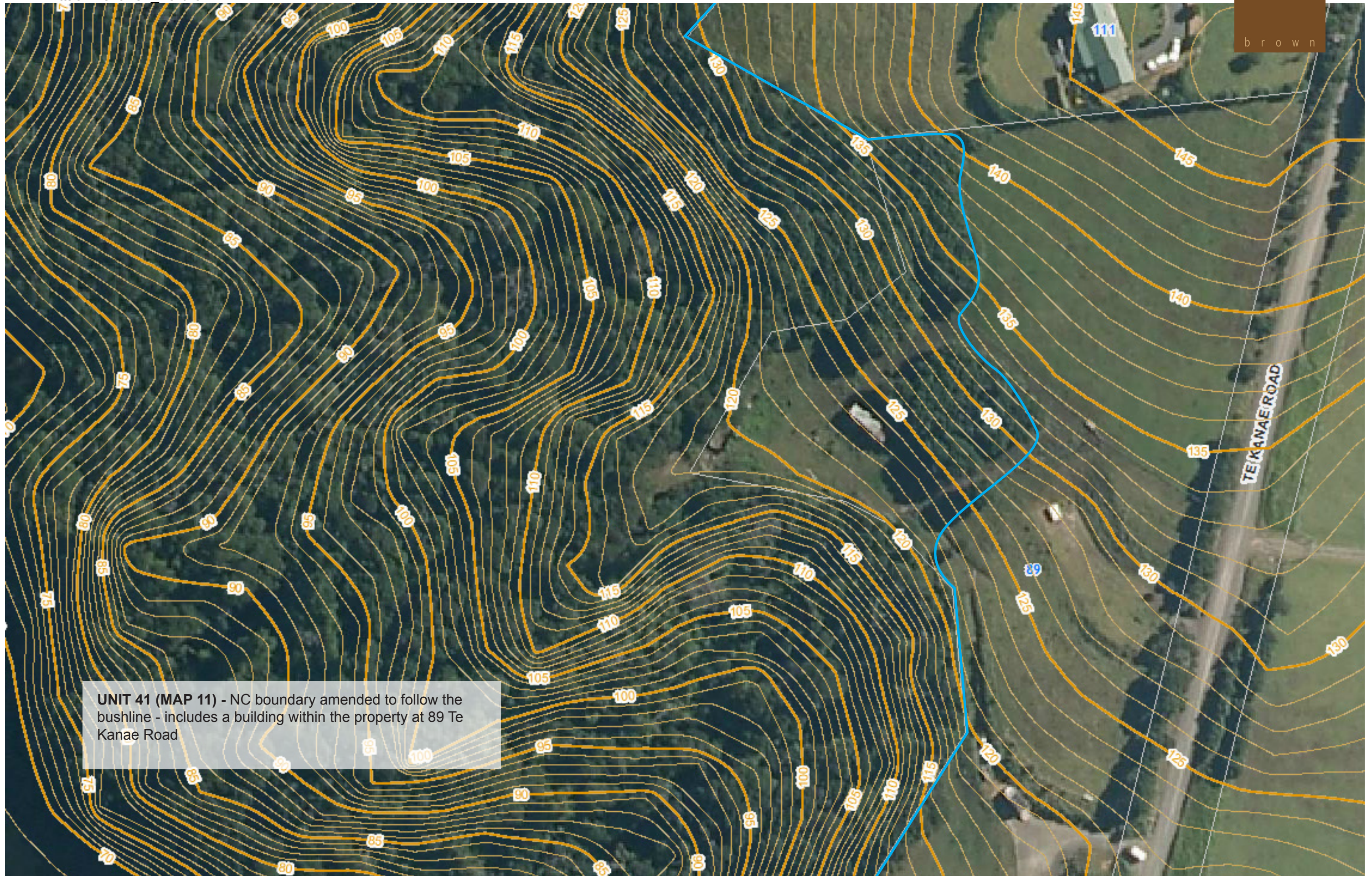
UNIT 31
EXTENSION TO HIGH NC AREA

UNIT 31

447 MOTUTARA ROAD (PART 3)

BOUNDARY ADJUSTMENTS

NATURAL CHARACTER ASSESSMENT - AUCKLAND REGION | JANUARY 2014



UNIT 41 (MAP 11) - NC boundary amended to follow the bushline - includes a building within the property at 89 Te Kanae Road

89 TE KANAE ROAD

BOUNDARY ADJUSTMENTS

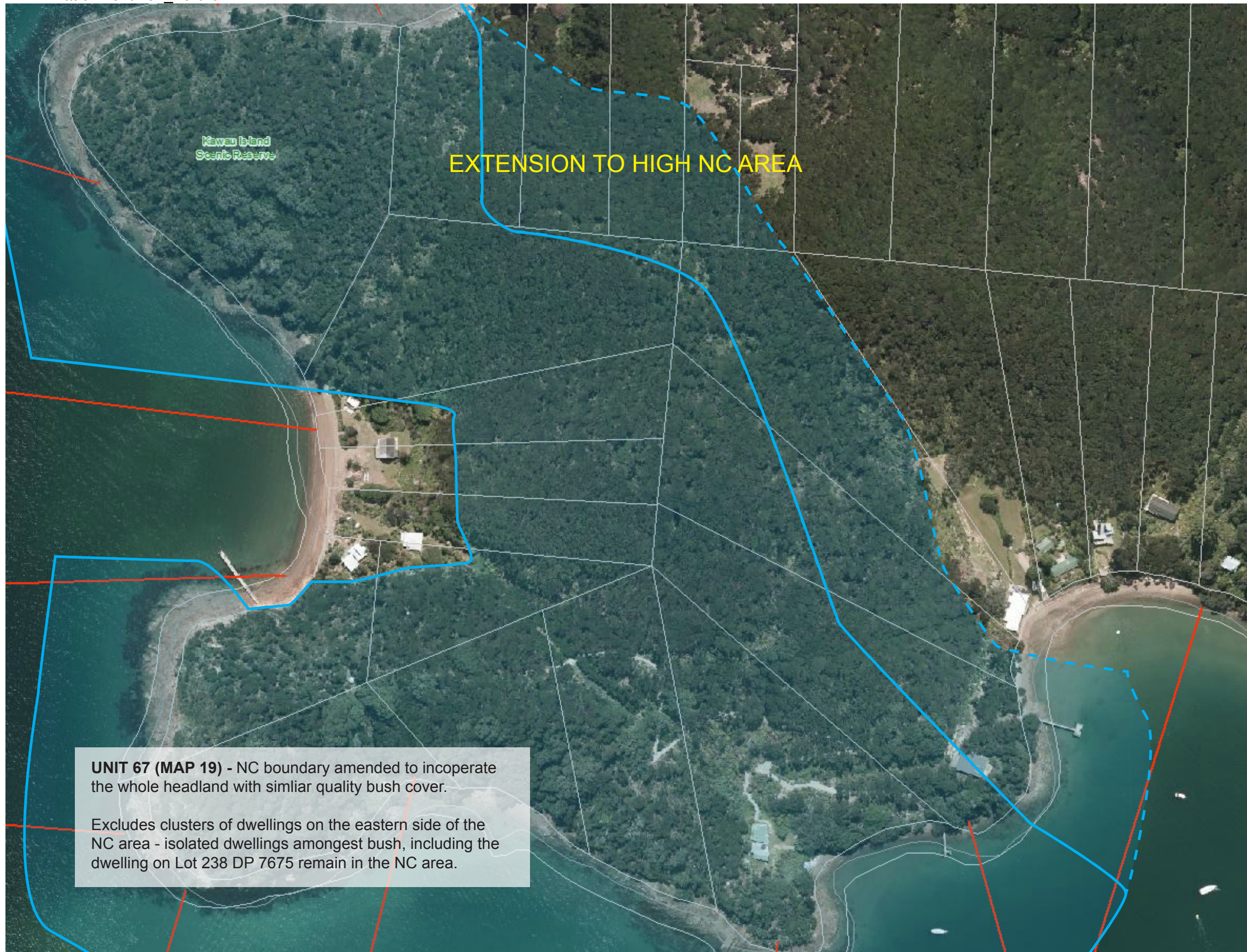


UNIT 16 (MAP 4) - NC boundary amended to follow the bushline - excludes buildings at 3539 Kaipara Coast Highway

3539 KAIPARA COAST HIGHWAY

BOUNDARY ADJUSTMENTS

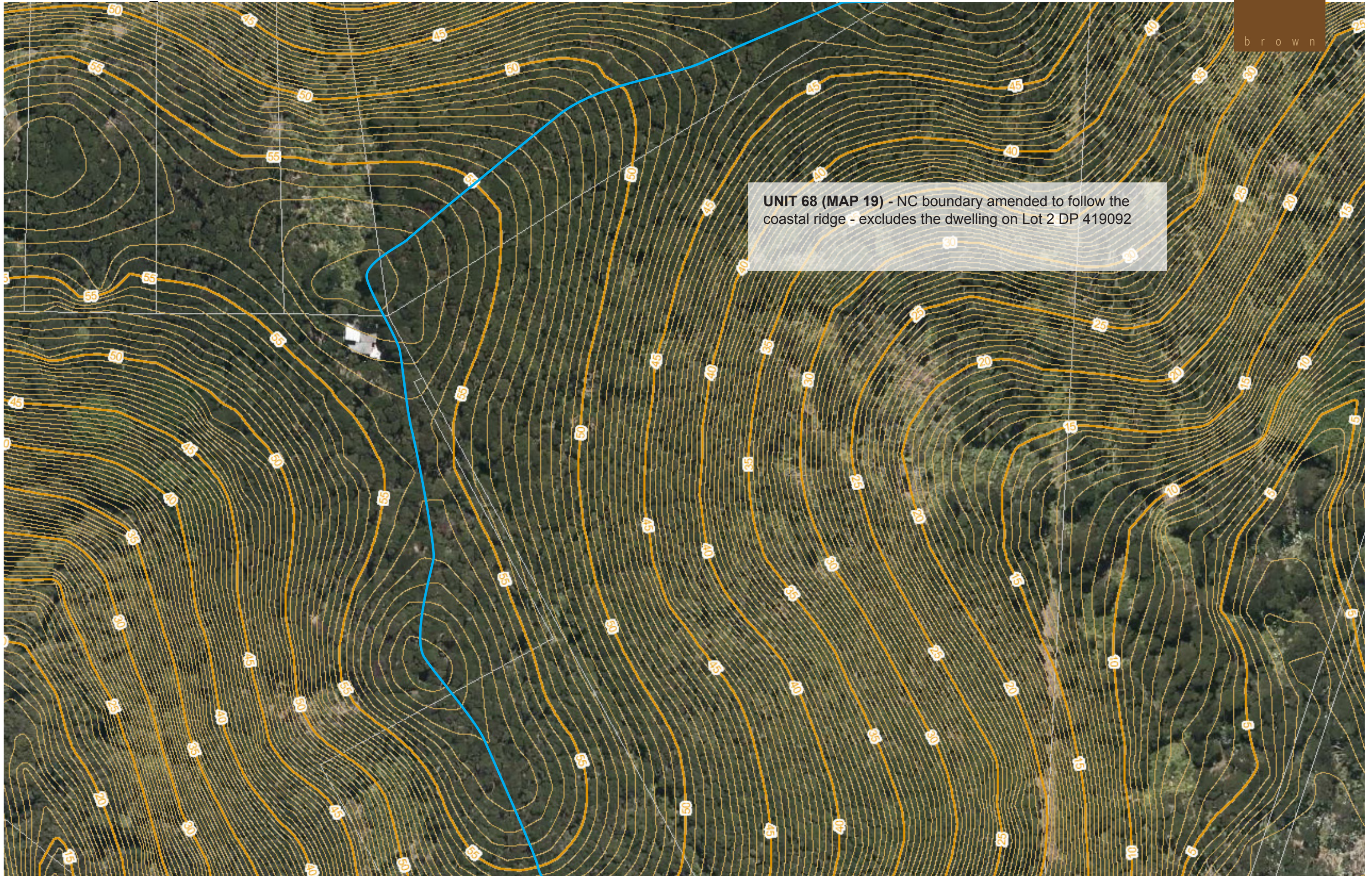
NATURAL CHARACTER ASSESSMENT - AUCKLAND REGION | JANUARY 2014



LOT 238 DP 7675, BON ACCORD HARBOUR

BOUNDARY ADJUSTMENTS

NATURAL CHARACTER ASSESSMENT - AUCKLAND REGION | JANUARY 2014

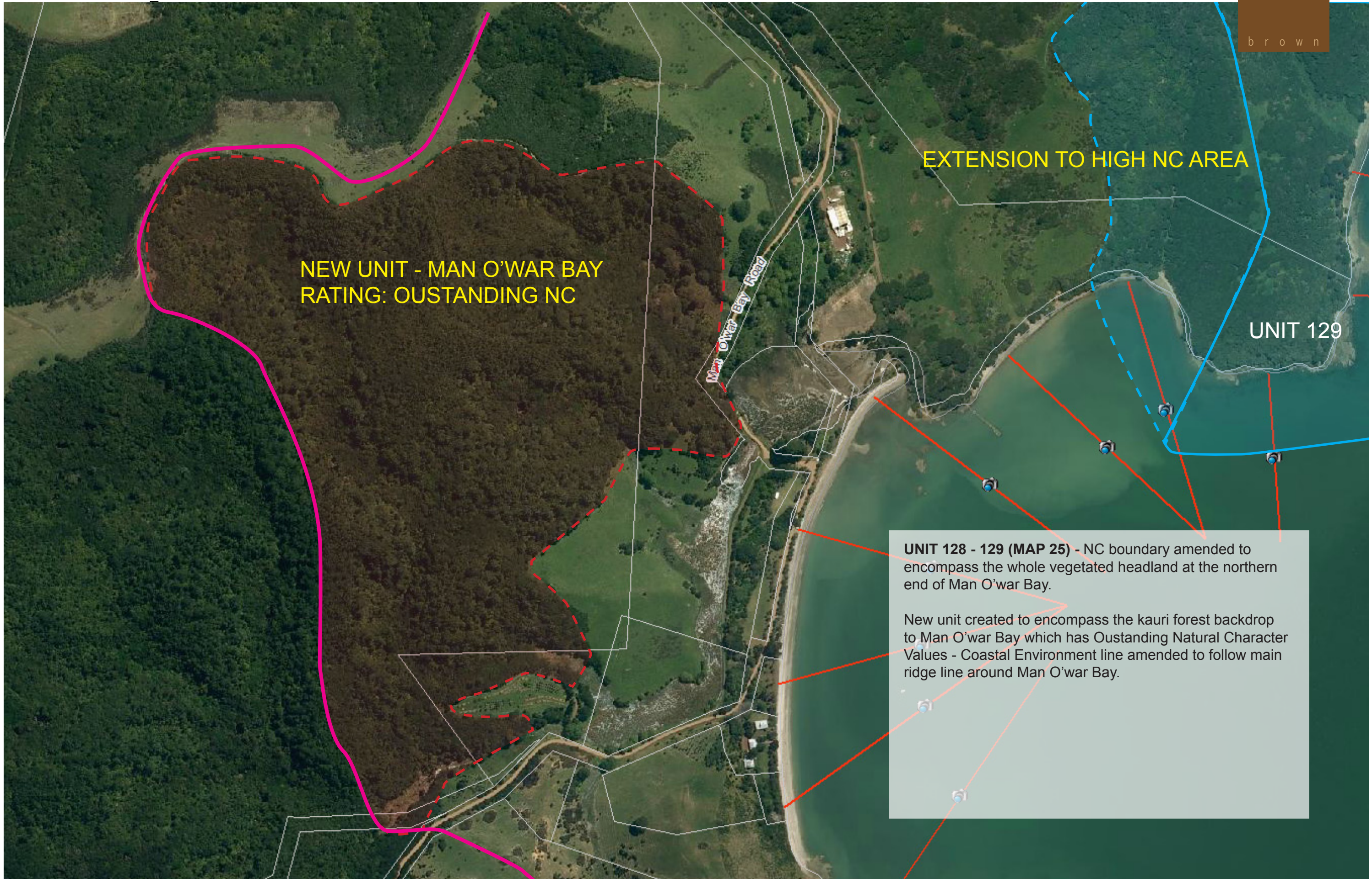


UNIT 68 (MAP 19) - NC boundary amended to follow the coastal ridge - excludes the dwelling on Lot 2 DP 419092

LOT 2 DP 419092, NORTH COVE

BOUNDARY ADJUSTMENTS

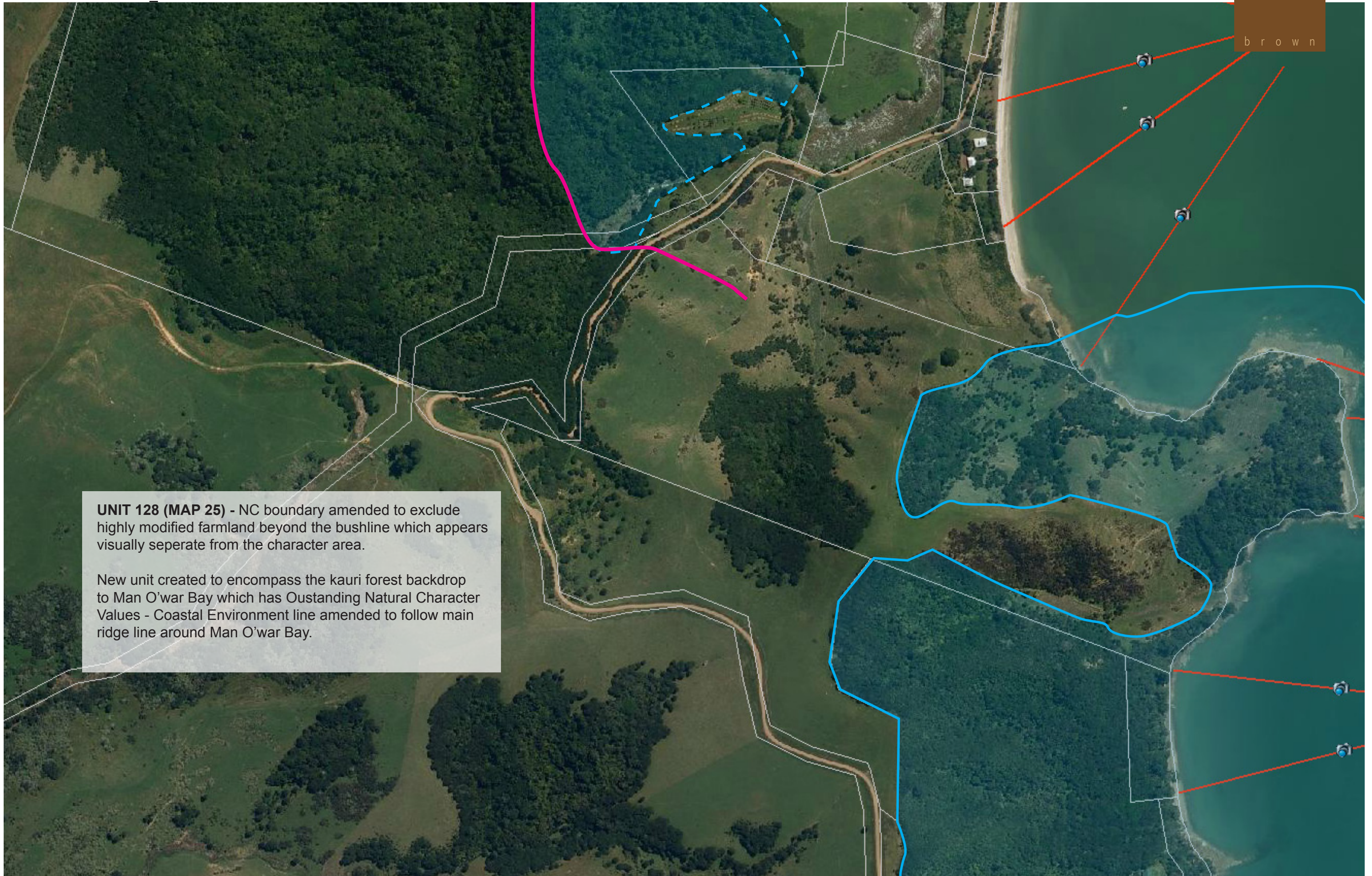
NATURAL CHARACTER ASSESSMENT - AUCKLAND REGION | JANUARY 2014



COWES BAY ROAD (PART 1)

BOUNDARY ADJUSTMENTS

NATURAL CHARACTER ASSESSMENT - AUCKLAND REGION | JANUARY 2014



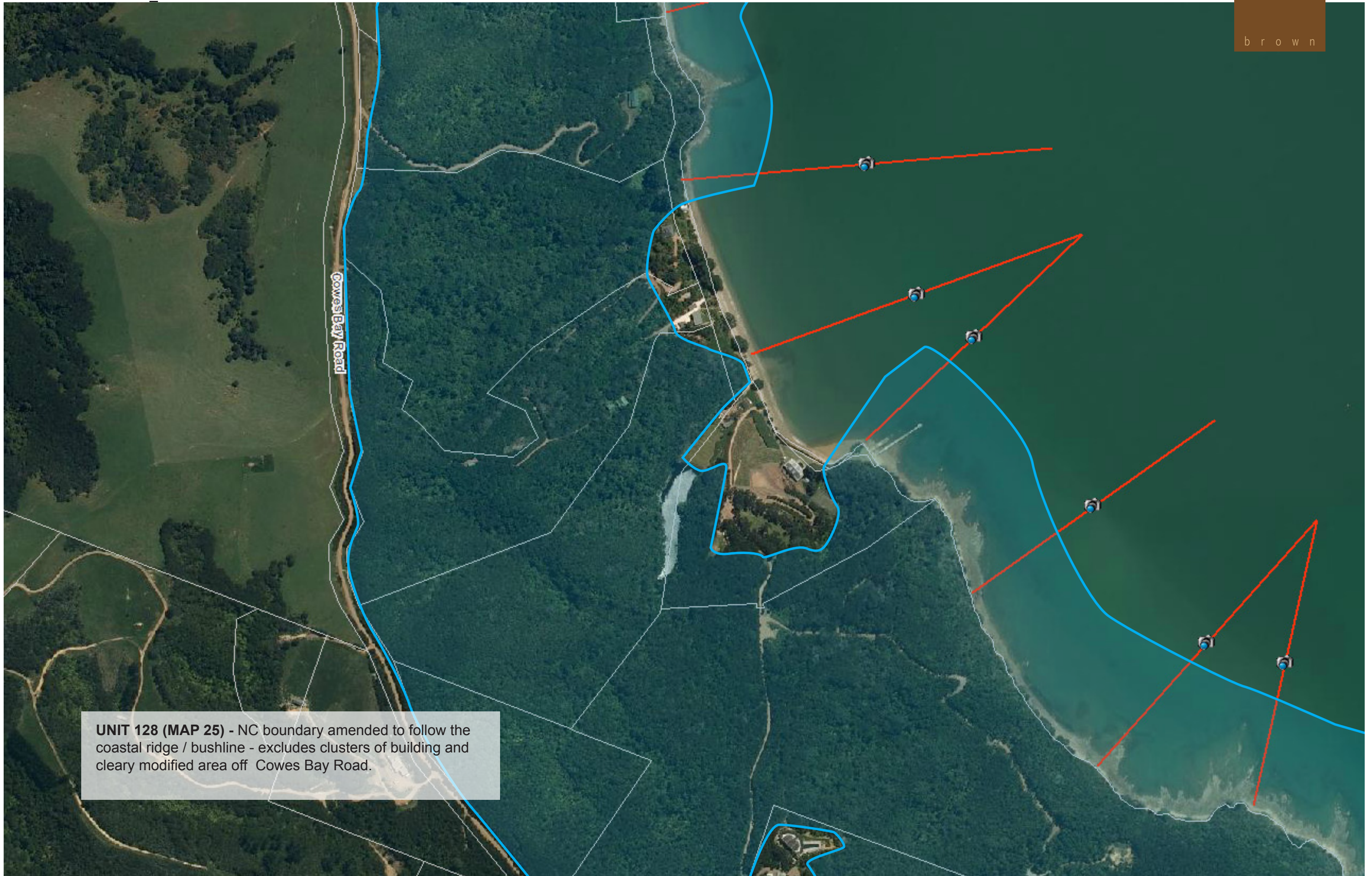
UNIT 128 (MAP 25) - NC boundary amended to exclude highly modified farmland beyond the bushline which appears visually separate from the character area.

New unit created to encompass the kauri forest backdrop to Man O'war Bay which has Outstanding Natural Character Values - Coastal Environment line amended to follow main ridge line around Man O'war Bay.

COWES BAY ROAD (PART 2)

BOUNDARY ADJUSTMENTS

NATURAL CHARACTER ASSESSMENT - AUCKLAND REGION | JANUARY 2014

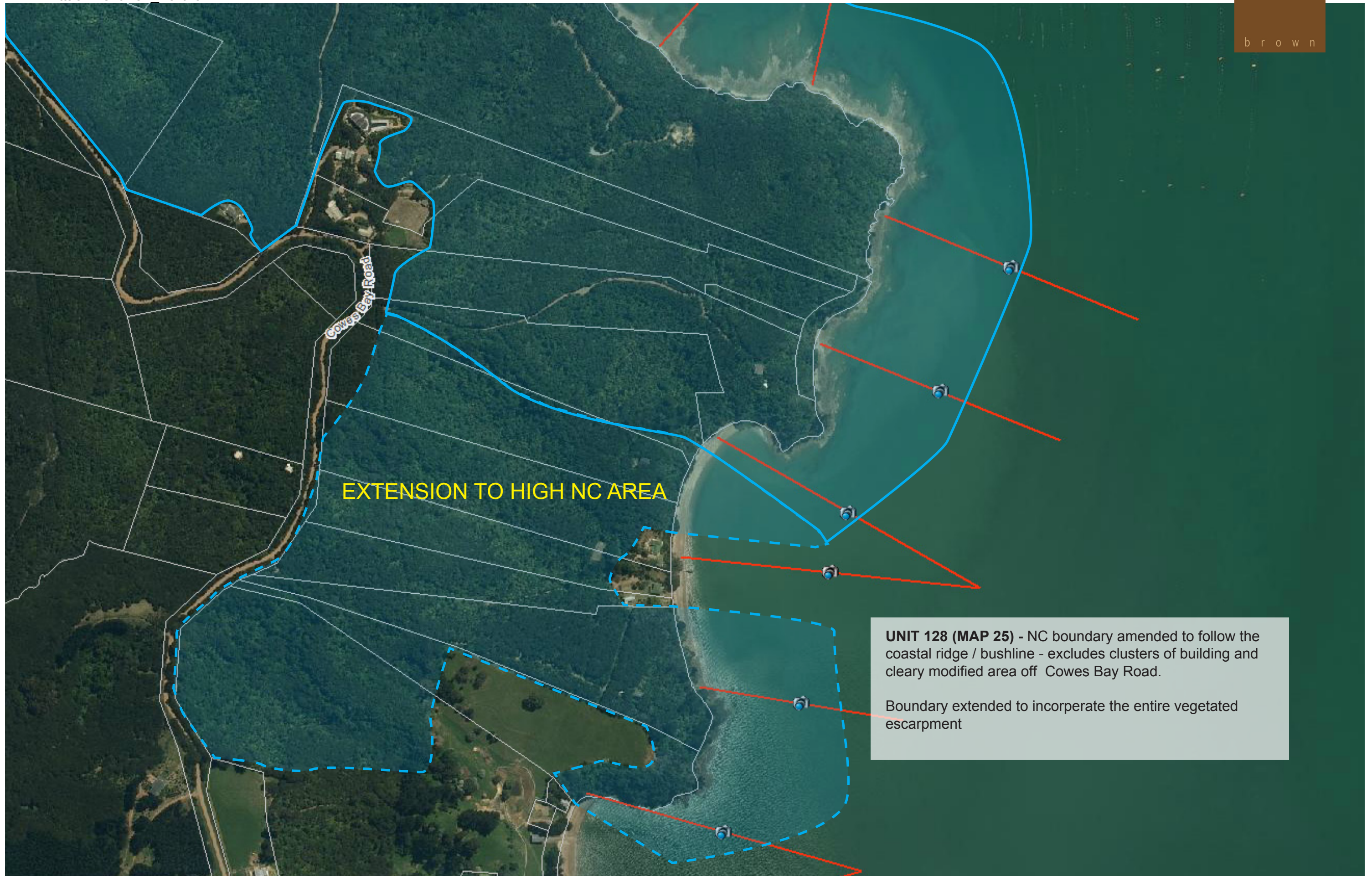


UNIT 128 (MAP 25) - NC boundary amended to follow the coastal ridge / bushline - excludes clusters of building and clearly modified area off Cowes Bay Road.

COWES BAY ROAD (PART 3)

BOUNDARY ADJUSTMENTS

NATURAL CHARACTER ASSESSMENT - AUCKLAND REGION | JANUARY 2014



EXTENSION TO HIGH NC AREA

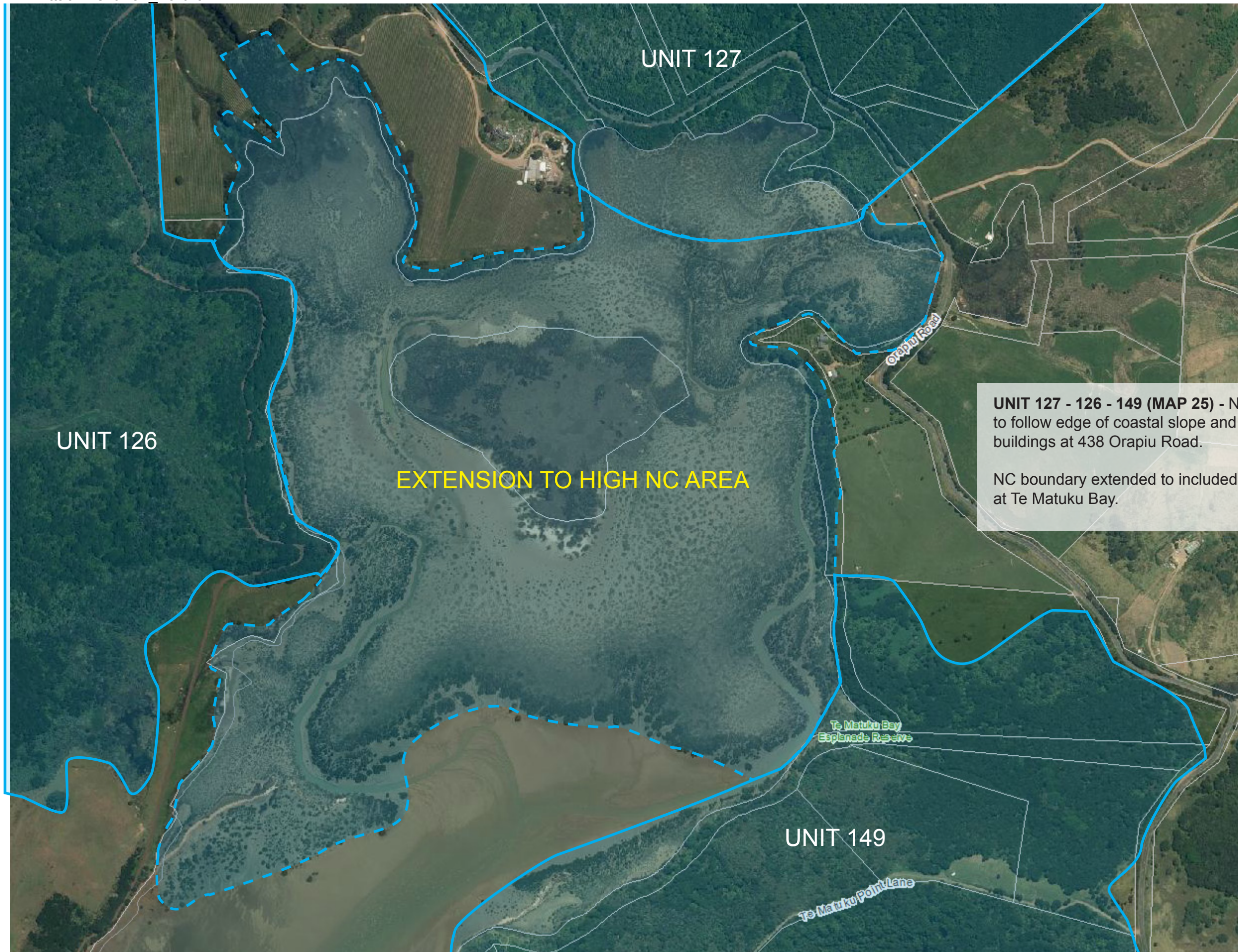
UNIT 128 (MAP 25) - NC boundary amended to follow the coastal ridge / bushline - excludes clusters of building and cleary modified area off Cowes Bay Road.

Boundary extended to incorporate the entire vegetated escarpment

COWES BAY ROAD (PART 4)

BOUNDARY ADJUSTMENTS

NATURAL CHARACTER ASSESSMENT - AUCKLAND REGION | JANUARY 2014



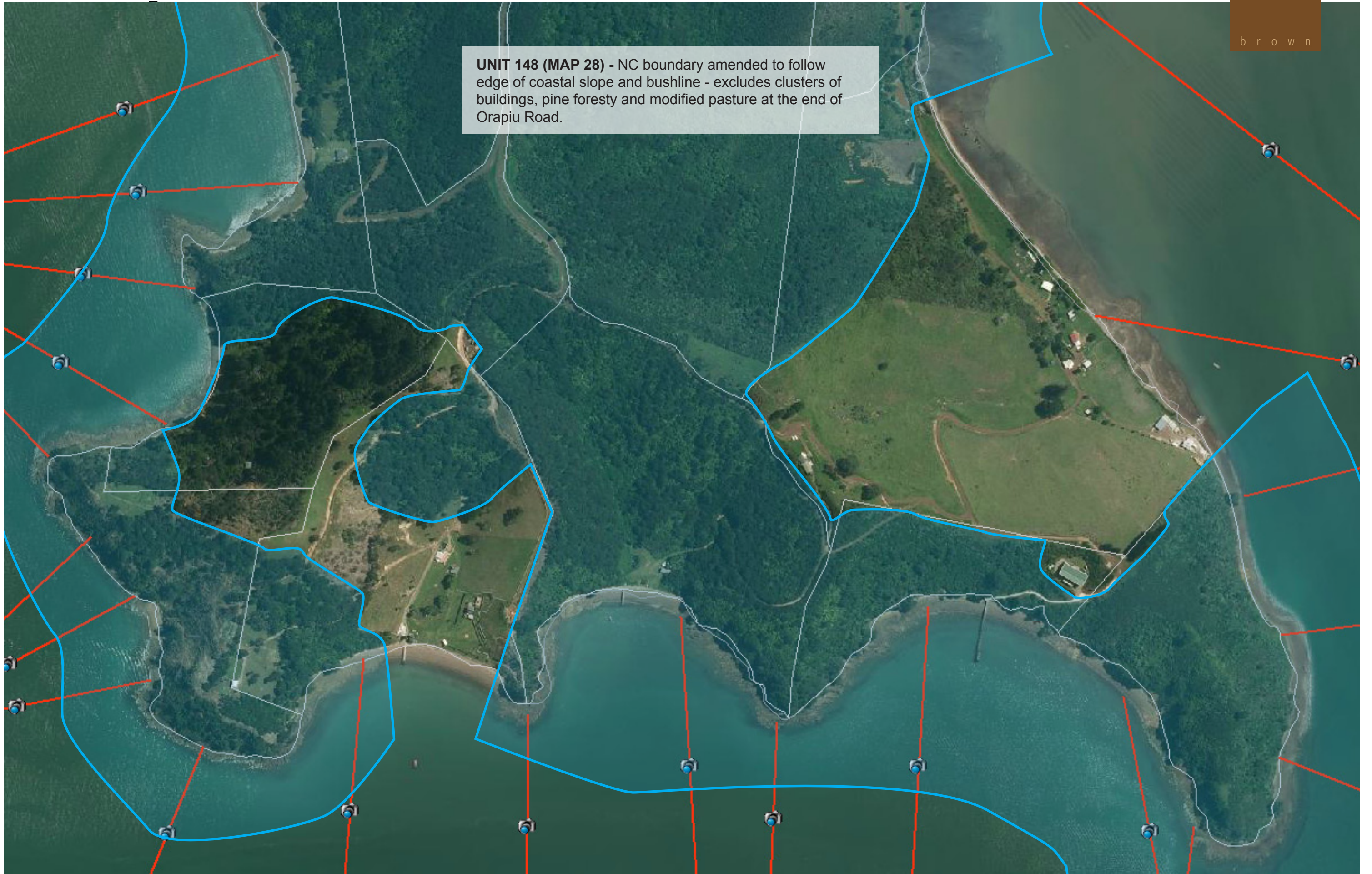
UNIT 127 - 126 - 149 (MAP 25) - NC boundary amended to follow edge of coastal slope and bushline - excludes buildings at 438 Orapiu Road.

NC boundary extended to included the whole intertidal area at Te Matuku Bay.

438 ORAPIU ROAD

BOUNDARY ADJUSTMENTS

UNIT 148 (MAP 28) - NC boundary amended to follow edge of coastal slope and bushline - excludes clusters of buildings, pine forestry and modified pasture at the end of Orapiu Road.



402B ORAPIU ROAD (PART 1)

BOUNDARY ADJUSTMENTS

NATURAL CHARACTER ASSESSMENT - AUCKLAND REGION | JANUARY 2014