

165 WADE RIVER ROAD

BOUNDARY ADJUSTMENTS

NATURAL CHARACTER ASSESSMENT - AUCKLAND REGION | JANUARY 2014



EXTENSION TO HIGH NC AREA

UNIT 101 (MAP 23) - NC boundary amended to follow edge of coastal ridge - excludes the dwelling at 2, 4, & 6 Te Kawau Pass.

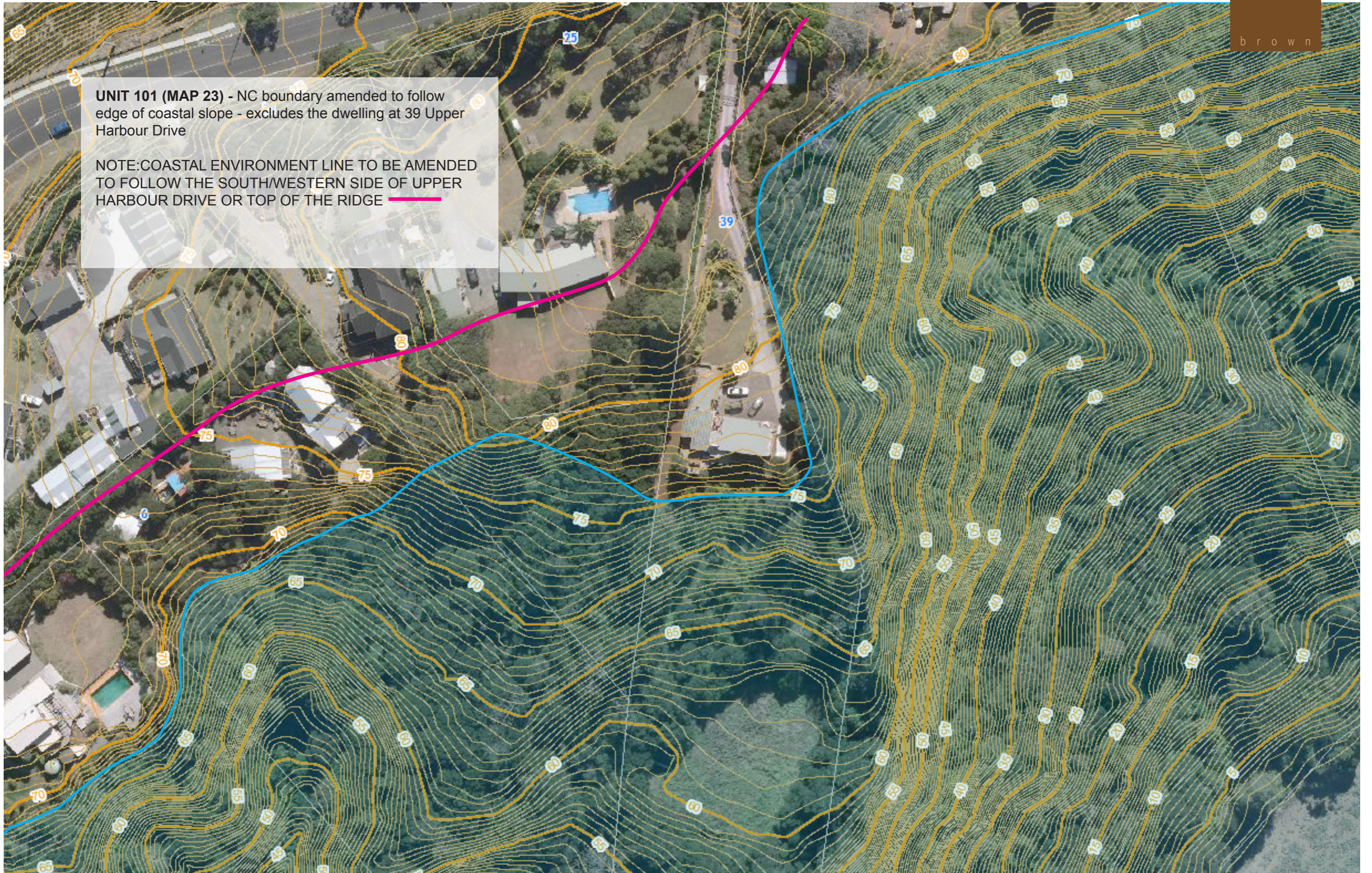
NC boundary extended to incorporate the entire escarpment up to the motorway edge

6 TE KAWAU PASS

BOUNDARY ADJUSTMENTS

UNIT 101 (MAP 23) - NC boundary amended to follow edge of coastal slope - excludes the dwelling at 39 Upper Harbour Drive

NOTE: COASTAL ENVIRONMENT LINE TO BE AMENDED TO FOLLOW THE SOUTH/WESTERN SIDE OF UPPER HARBOUR DRIVE OR TOP OF THE RIDGE 



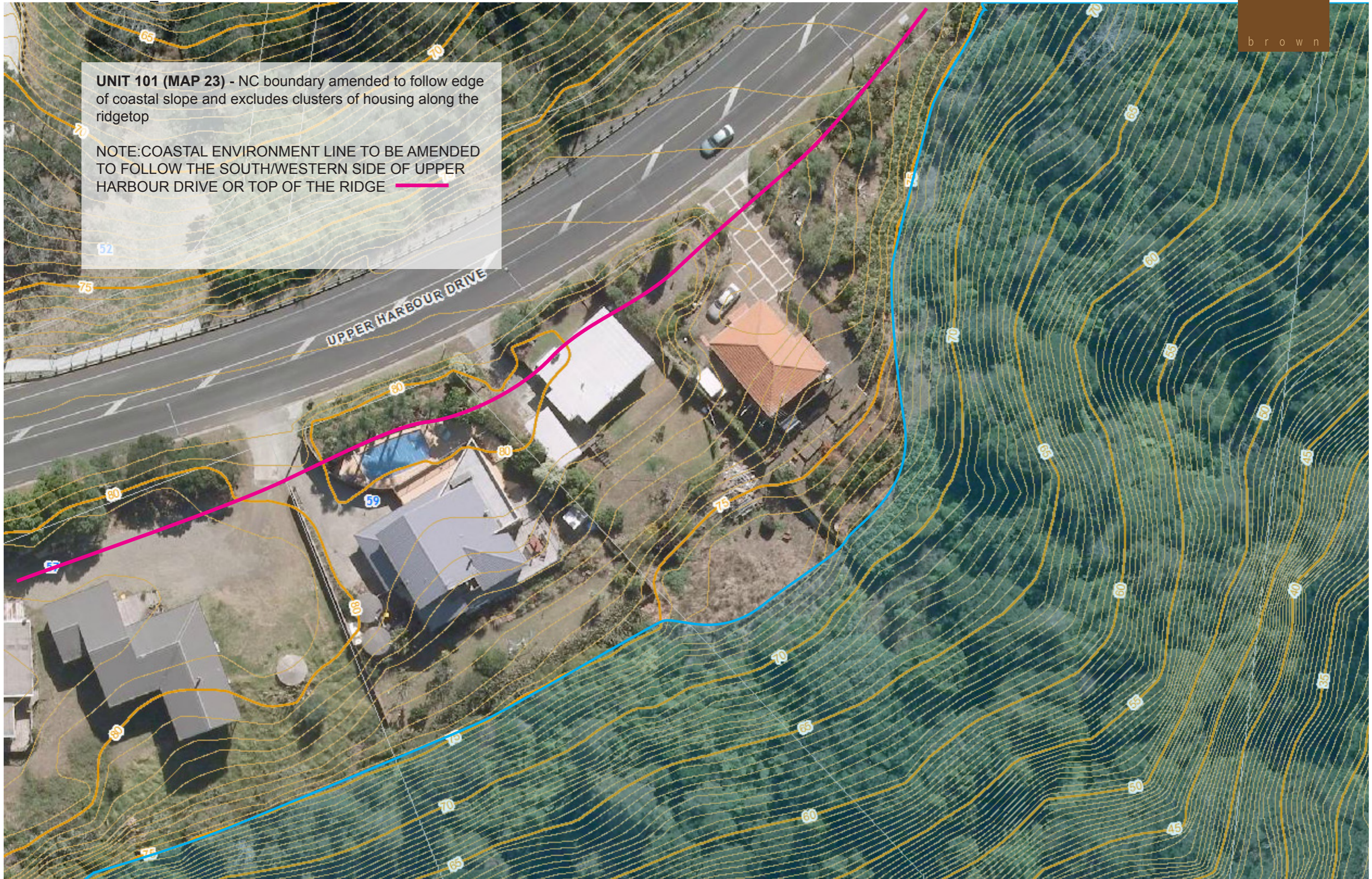
39 UPPER HARBOUR DRIVE

BOUNDARY ADJUSTMENTS

NATURAL CHARACTER ASSESSMENT - AUCKLAND REGION | JANUARY 2014

UNIT 101 (MAP 23) - NC boundary amended to follow edge of coastal slope and excludes clusters of housing along the ridgetop

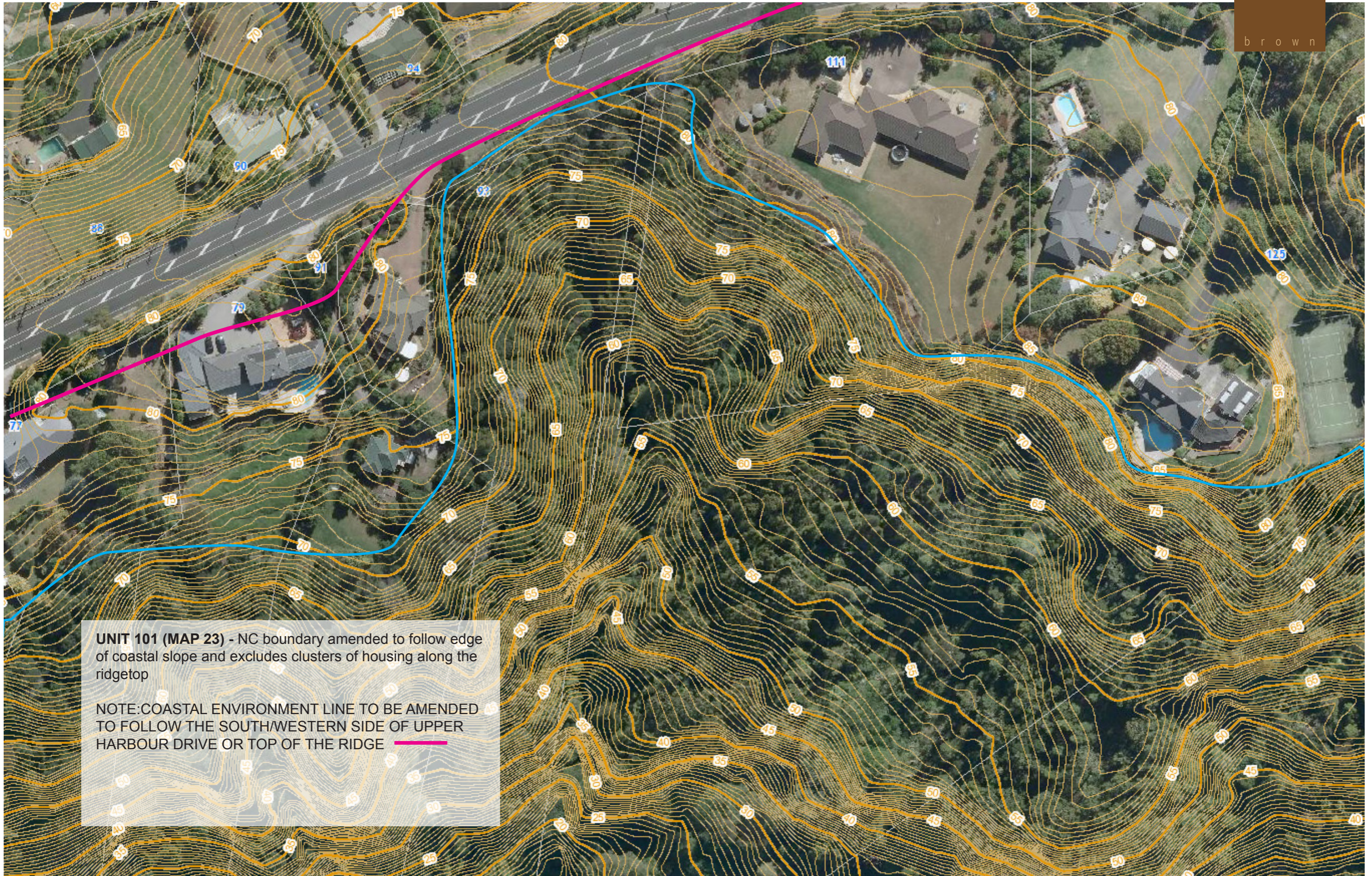
NOTE: COASTAL ENVIRONMENT LINE TO BE AMENDED TO FOLLOW THE SOUTH/WESTERN SIDE OF UPPER HARBOUR DRIVE OR TOP OF THE RIDGE



61 UPPER HARBOUR DRIVE

BOUNDARY ADJUSTMENTS

NATURAL CHARACTER ASSESSMENT - AUCKLAND REGION | JANUARY 2014



135 UPPER HARBOUR DRIVE (PART 1)

BOUNDARY ADJUSTMENTS

NATURAL CHARACTER ASSESSMENT - AUCKLAND REGION | JANUARY 2014



135 UPPER HARBOUR DRIVE (PART 2)

BOUNDARY ADJUSTMENTS

NATURAL CHARACTER ASSESSMENT - AUCKLAND REGION | JANUARY 2014