



**1 June
2023**



Community Newsletter

Muriwai Beach cyclone recovery

Staged lifting of the cordons

A draft plan to agree on how we can reinstate access to Muriwai's valued public spaces, while maintaining the security of impacted private properties and safety of road users, was presented to selected community members last week.

We are proposing a staged lifting of the cordons, starting with the outer cordon on the corner of Waitea Road and Oaia Road.

We cannot yet give you exact timings for this cordon to be lifted. **All other cordons will remain in place and security will be present.**

Investigation of potential safety issues in the vicinity of Motutara Road are ongoing. They include geotechnical assessment which we expect will take a couple of weeks. We will have a more detailed programme to share with you next week. Any findings will be considered as a part of decision-making on the reopening of Motutara Road.

As previously mentioned in this newsletter, we encourage residents to get involved with Neighbourhood Support (previously known as Neighbourhood Watch), so you can group together to keep an eye out for suspicious or unusual behaviour. The council and NZ Police has been helping the community in the setting up of the programme, more details to come.

NZ Police will be responding to 111 calls, patrols and supporting Neighbourhood Support, and we will continue to employ First Security to patrol the restricted areas to act as a deterrent and report any breaches or security concerns to the police.

Track closure reminder

Due to safety risks, all tracks through the Edwin Mitchelson reserve and Maukatia Gannet Path

and headlands remains closed. A geotech assessment is planned shortly and as soon as the tracks are deemed safe, we will re-open them. Please refrain from using the tracks until this work is completed. **The vehicle access to the beach (via Coast Road) will also remain closed.** Access to the beach by pedestrians, surfers, kite surfers and horse riders will not be restricted, only vehicles.

Consultation with owners of high-risk properties

From 12 June, Auckland Council will begin engagement with owners of properties affected by the extreme weather earlier this year and properties considered to be at risk in future events. More information on the process can be found in [this OurAuckland story](#).

A point of confusion has been how placards work with the [Government's risk framework](#) they announced on 1 May. It is important to note that placard colours do not directly correlate with risk categories. These are two separate processes, and some properties without placards may be considered high risk for future events under the central government framework while some may not, and vice versa.

To provide certainty within the risk categories, council will combine modelling data, and placard and insurance data with specific property information (which we are asking property owners to provide) and the results of the GHD geotechnical programme after it finishes in August.

Sandbags available

Both the Muriwai Ranger Station and Muriwai Fire Station have free sandbags available. You can pick them up anytime. Stocks of filled sandbags are limited, but empty bags are also available at the ranger station, which you can fill at the beach.

Send in your historical property information

You still have time to let Auckland Council's geotechnical supplier GHD know about any historical/anecdotal information regarding your property.

This could include information such as any former slips, surface seepage, springs or leaning trees that may be of interest to the GHD team.

Auckland Council does have some historical property information, but it's limited. There are many reasons for this including the information not being recorded by previous councils or it was not reported to council in the first place.

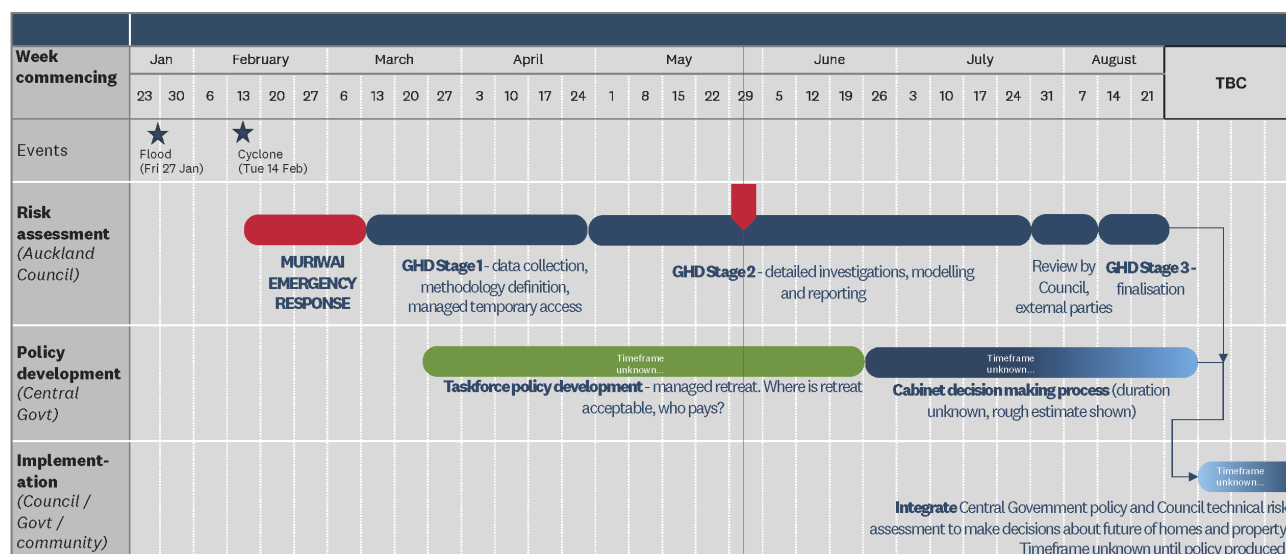
Please email muriwai@aucklandcouncil.govt.nz with your information, including exact location, plus any imagery you may have by 5 June (please use subject line 'Anecdotal evidence'). This information will be passed onto GHD. This anecdotal evidence will be recorded and considered as part of the GHD landslide risk assessment.

High-level plan (roadmap) for properties in the current exclusion zone

- Apply initial F-angle analysis of slip hazard to properties in the exclusion zone
Status: *complete*
- Perform geo-technical review of each property in the exclusion zones and identify any other risk factors
Status: *complete*
- Reassess placard status based on analysis of slip hazard and site observation
Status: *complete*
- Determine if the site is still considered dangerous
Status: *complete*
- Contact property owners (in the exclusion zone only) on updated placard status
Status: *complete*
- Apply updated placard status to building and update council records
Status: *complete*
- Communicate managed temporary access to affected property owners
Status: *complete*
- Communicate with individuals about their property placard status and assign a case manager to each property
Status: *in progress / ongoing*
- Review closure of Muriwai Regional Park and Muriwai cordons
Status: *a draft plan was provided to selected community members and a staged lifting of the cordons has been agreed, date to be confirmed. We will keep you updated when the cordon at the intersection of Waitea and Oaia roads will be lifted. Please see story above.*
- Additional geotechnical investigation, analysis and modelling of the slopes at Muriwai (GHD Stage 2)
Status: *ongoing, for further information please refer to Ross's update in the [27 April Muriwai Newsletter](#) and below update.*
- Review status of remaining red-placarded homes
Status: *once additional geotechnical work to assess risk has been completed (unless*

new geotechnical information becomes available in the meantime). Please refer to Ross's update in the [27 April Muriwai Newsletter](#).

Muriwai Geotech programme timeline:



Building assessments update

Updated placard STATUS numbers in Muriwai as of Monday 29 May:

- Red 1 – 98
- Red 2 – 6
- Yellow 1 – 23
- Yellow 2 – 31
- White – 305

There are different reasons why these numbers may differ each week, including:

- If remedial action has been confirmed and approved by the council's compliance team, then the placard can be noted as closed and removed off the list.
- It is identified as a duplicate and removed.
- If was confirmed as one placard for a building with multiple postal addresses, but sits in our system as one legal property.

Visit the [Auckland Council website](#) to learn more about what the placard colours mean.

Have we got your details?

If you've received this newsletter via email, then we're all good – we have your correct contact details.

If it has been passed on to you by someone else or you're reading it via a website or social media channel, you can [sign-up](#) to receive this newsletter directly to your inbox.

Previous newsletters

If you're new to the Muriwai Newsletter, please visit aucklandcouncil.govt.nz/muriwai-community-newsletters to read previous editions.



Need help?



Visit: aucklandcouncil.govt.nz/recovery-muriwai
Enquire: muriwai@aucklandcouncil.govt.nz



Write: Auckland Council, Private Bag 92300
Victoria Street West, Auckland 1142 | DX CX 10032

